



YAMAHA

PARTS LIST

MODEL YZ80A

www.legends-yamaha-enduros.com

NOTICE

ALL PART NUMBERS CONTAINED IN THIS CATALOGUE ARE COMPRISED OF TEN DIGITS. WHEN ORDERING, PLEASE ADD TWO ZEROS TO THE END OF EACH PART NUMBER REQUIRED TO CONVERT THE TEN DIGITS INTO THE NEW TWELVE DIGIT NUMBERS.

YAMAHA MOTOR CO., LTD.

YAMAHA

PARTS LIST

MODEL YZ80A

www.legends-yamaha-enduro.com



www.legends-yamaha-enduros.com

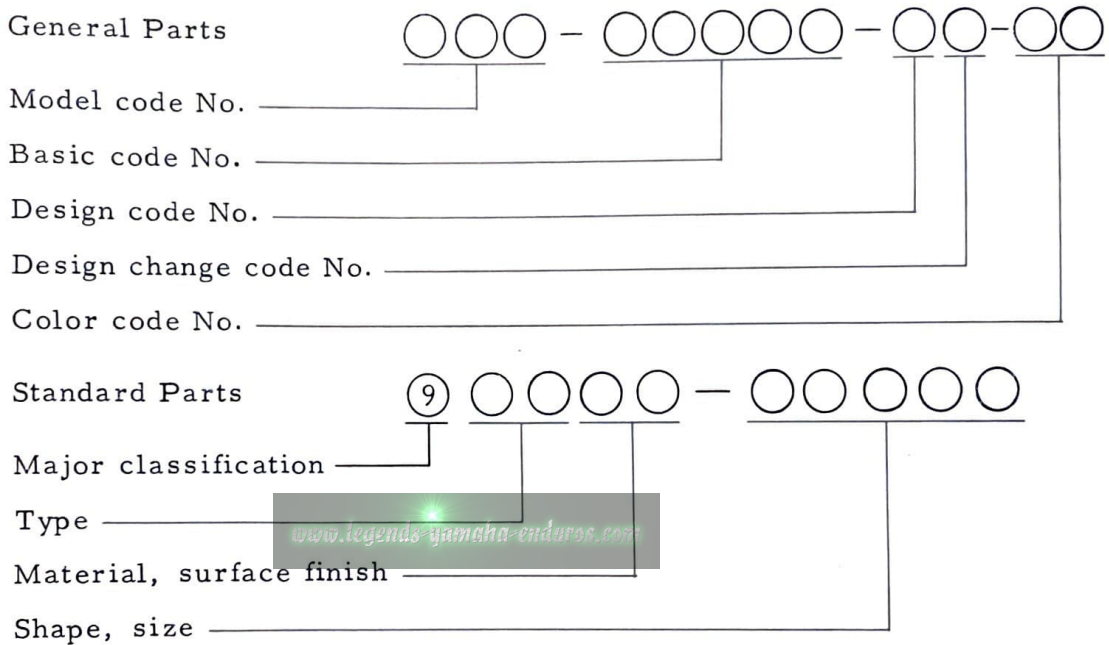


FOREWORD

This Part List relates to the parts in use for the Yamaha YZ80A. When you are ordering replacement parts for the YZ80A, refer to this Parts List and quote both part numbers and part names correctly.

1. Structure of Part No.

Yamaha parts are divided largely into two categories; general parts and standard parts, and each part No. has the following structure:



Note: Every standard No. begins with 9.

2. How to Use this Parts List

(1) Except for steel balls (whose size is indicated in inches), the size of all parts is indicated in millimeters in the following manner.

Pipe (rubber or vinyl) Inside diameter - length

O-ring Section area - inside diameter

Washer, shim, collar Inside diameter - outside diameter - thickness (length)

(2) Parts, which are to be supplied in the form of assemblies, are listed with an indention of one letter's space, and a dot (.) is put

against the name of each part. If any two different assemblies (e. g. , right and left side components) consist of almost the same type components, these two assemblies are listed in two lines, and then the names of component parts are listed in the subsequent lines with an indentation as mentioned earlier. The quantity of parts is given in the following manner; that is, in the case of parts being the same in type between the right and left, a total quantity of parts is given. On the other hand, if the right and left side parts are different in type, the quantity of part(s) on each side is given.

Example

Description	Q'ty
CARBURETOR ASS'Y, left	1
CARBURETOR ASS'Y, right	1
. JET, pilot	2
. NOZZLE, main	2
:	
:	
:	
. LEVER, starter, left	1
. LEVER, starter, right	1

(3) Key to Symbols

- U. R. Use size (thickness) and/or number as required
- T Number of teeth in a gear
- V Voltage for light bulbs
- S "S" type oil seal or "S" type circlip
- SD "SD" type oil seal
- SO "SO" type oil seal
- SW "SW" type oil seal
- E "E" type circlip
- R "R" type circlip
- F/No. Frame No. (Applicable machine No.)

- (4) The right and left in relation to parts are determined on the basis of the rider facing toward the front.
- (5) This Parts List is based on the model in the production line on Oct. 18, 1973. Accordingly, if any modifications which have been made to parts will be announced in the Yamaha Parts News. It is advisable that according to the Yamaha Parts News, You will make necessary corrections to the Parts List on hand to keep it up-to dated.

CONTENTS

ENGINE

Fig. 1	Crankcase · Cylinder	1
Fig. 2	Crankcase Cover	3
Fig. 3	Crank · Piston	5
Fig. 4	Clutch	9
Fig. 5	Transmission	11
Fig. 6	Shifter 1	15
Fig. 7	Shifter 2	17
Fig. 8	Kick Starter	19
Fig. 9	Intake	21
Fig. 10	Carburetor	23
Fig. 11	Exhaust	27
Fig. 12	Oil Pump	29
Fig. 13	Flywheel Magneto	31

CHASSIS

Fig. 14	Frame · Side Cover	35
Fig. 15	Rear Arm · Rear Cushion	37
Fig. 16	Stand · Footrest · Brake Pedal	39
Fig. 17	Front Fender · Rear Fender	41
Fig. 18	Front Fork	45
Fig. 19	Steering	49
Fig. 20	Handle · Wire	51
Fig. 21	Fuel Tank	55
Fig. 22	Oil Tank	57
Fig. 23	Seat	59
Fig. 24	Front Wheel	61
Fig. 25	Rear Wheel	63
Fig. 26	Electrical	67

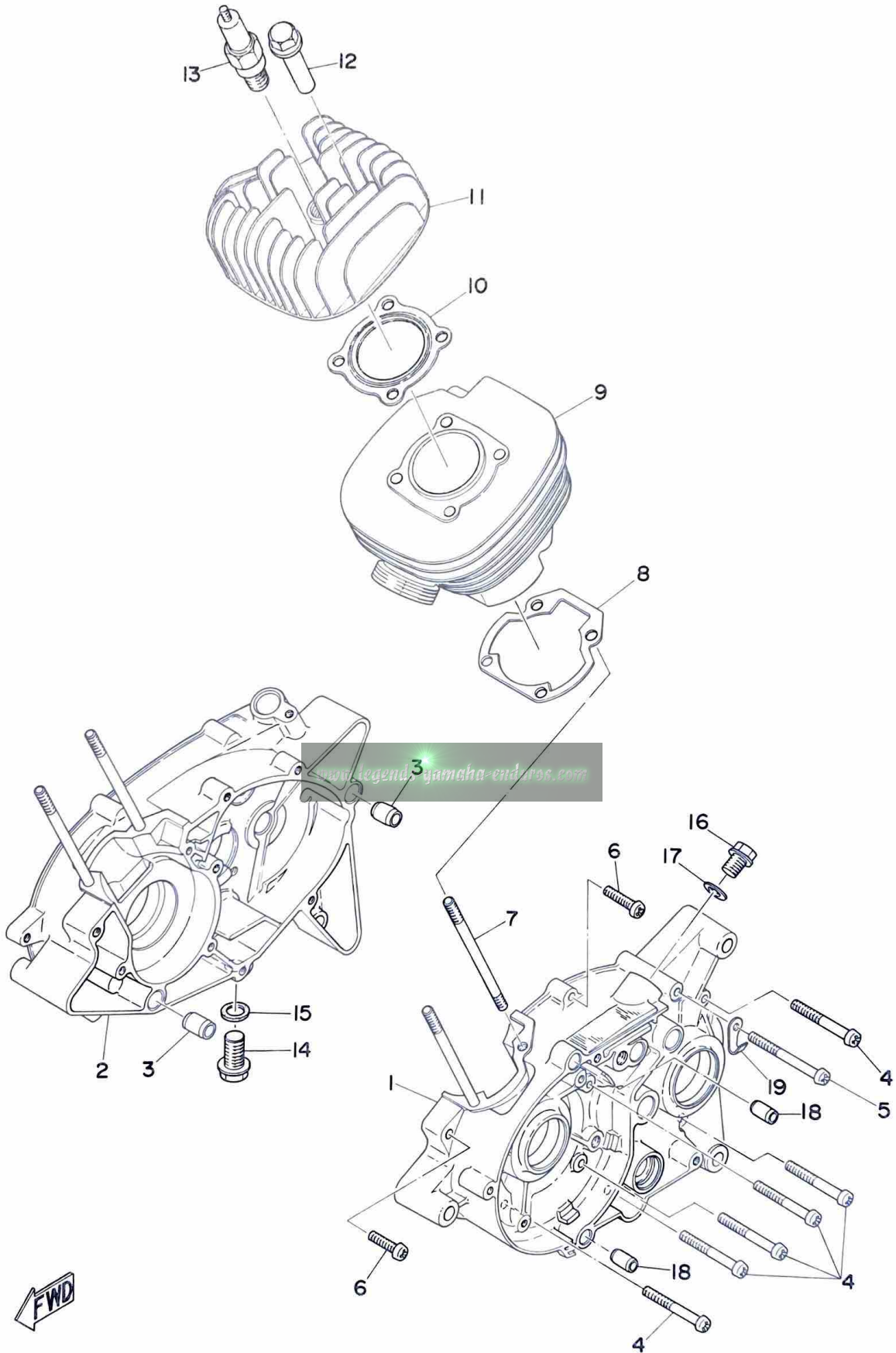
NUMERICAL INDEX

ENGINE

www.legends-yamaha-enduros.com



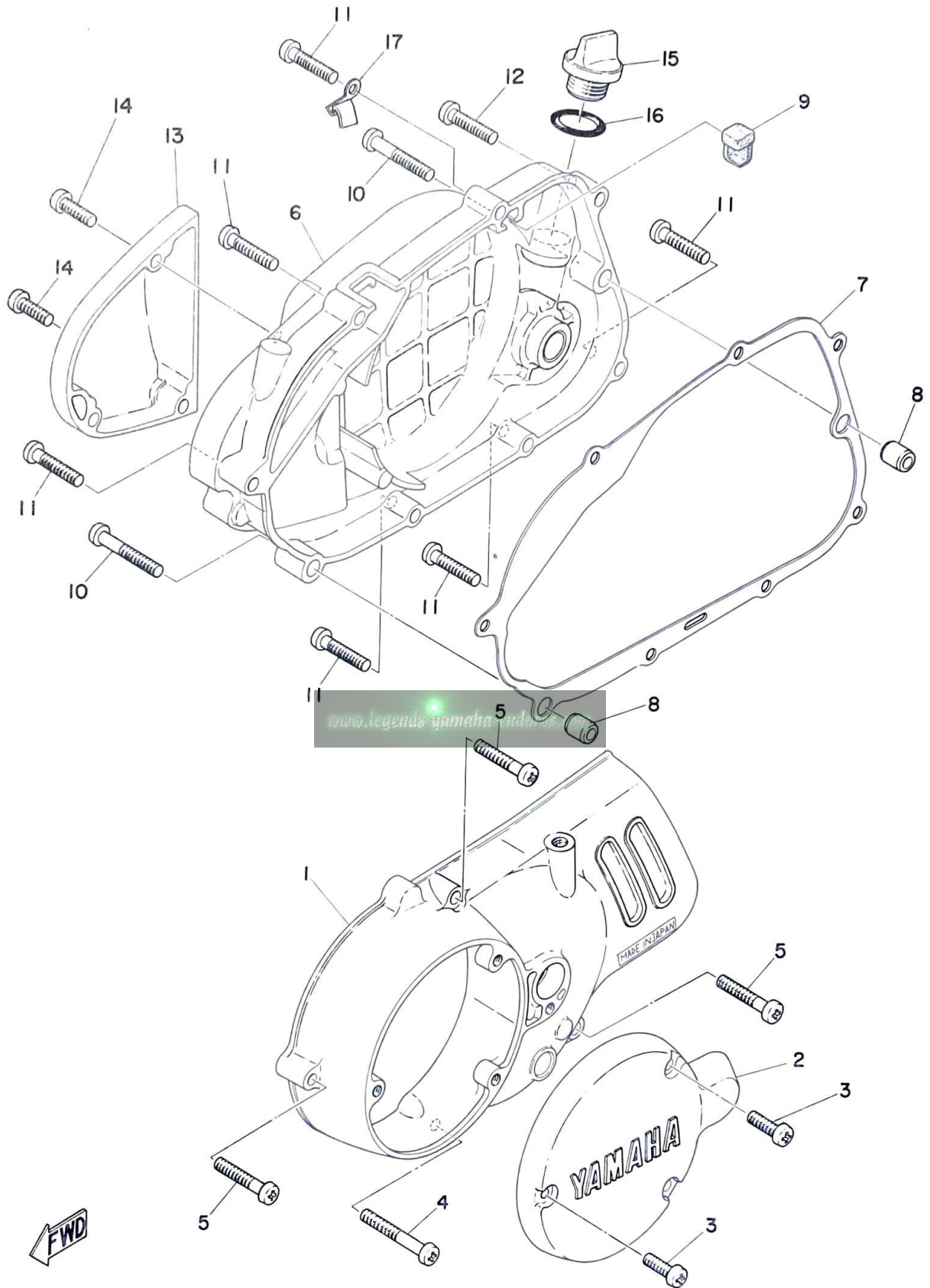
Fig. 1 CRANKCASE · CYLINDER



CRANKCASE · CYLINDER

Ref. No.	Parts No.	Description	Q'ty	Applicable Machine No.	Remarks
1- 1	367-15111-01-98	CASE, crank left	1		
1- 2	367-15121-02-98	CASE, crank right	1		
1- 3	91810-05016	PIN, dowel (8.4 - 12-16)	2		
1- 4	92501-06050	SCREW, panhead	8		
1- 5	95201-06055	SCREW, panhead	1		
1- 6	92501-06025	SCREW, panhead	2		
1- 7	90116-06139	BOLT, stud	4		
1- 8	367-11351-00	GASKET, cylinder	1		
1- 9	462-11311-00-R4	CYLINDER	1		
1-10	451-11181-00	GASKET, cylinder head	1		
1-11	462-11111-00-R4	HEAD, cylinder	1		
1-12	90179-06005	NUT	4		
1-13	94701-00040	PLUG, spark (B-7HS)	1		
1-14	132-15351-00	PLUG, drain	1		
1-15	132-15353-00	GASKET, drain plug	1		
1-16	367-18588-00	PLUG, blind	1		
1-17	367-18568-00	GASKET	1		
1-18	91810-02014	PIN, dowel (6.4-10-14)	2		
1-19	462-15485-00	CLAMP	1		

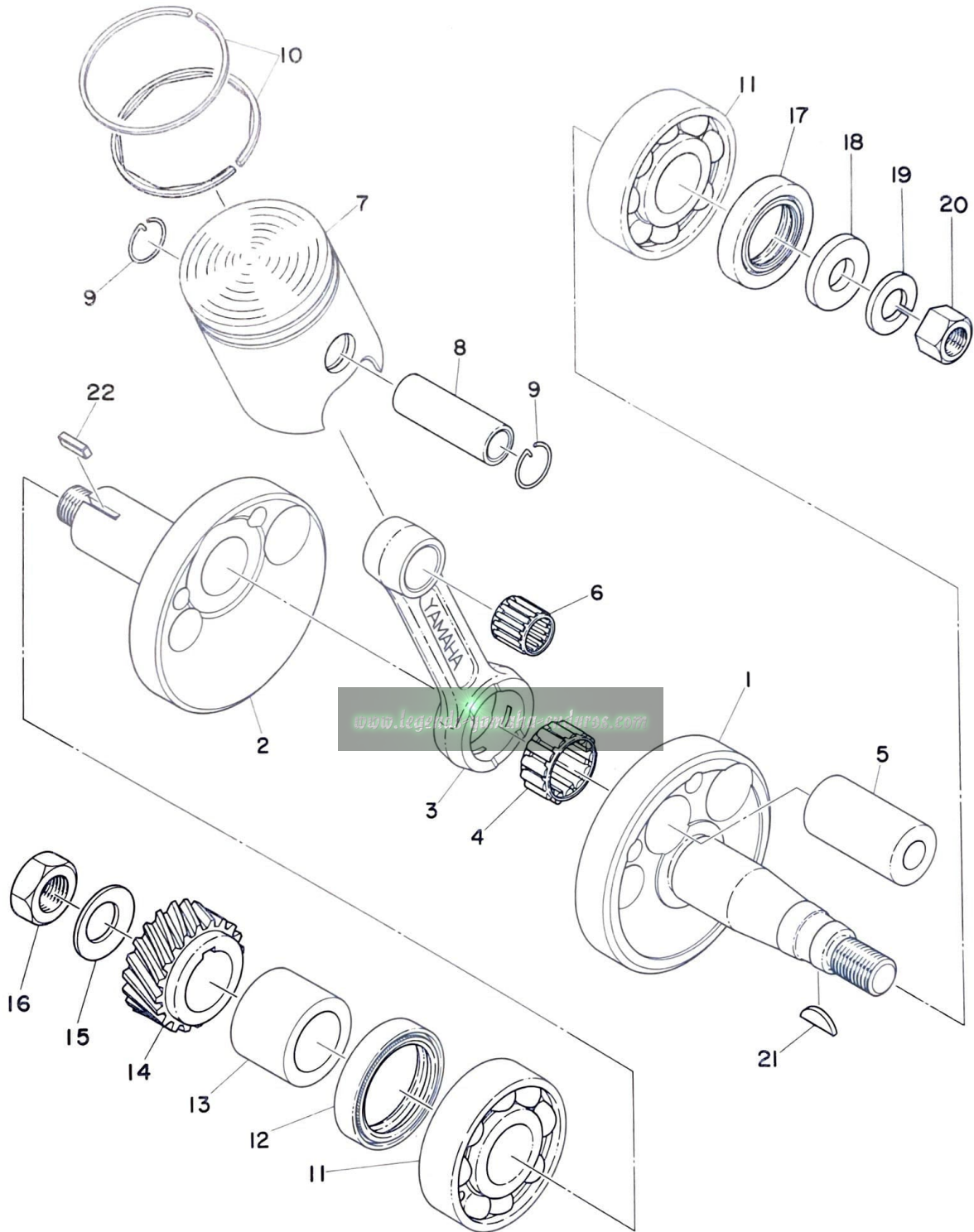
Fig. 2 CRANKCASE COVER



CRANKCASE COVER

Ref. No.	Parts No.	Description	Q'ty	Applicable Machine No.	Remarks
2- 1	353-15411-00-98	COVER, crankcase left	1		
2- 2	353-15415-00-98	COVER, generator	1		
2- 3	92506-06020	SCREW, panhead	3		
2- 4	92506-06045	SCREW, panhead	1		
2- 5	92506-06030	SCREW, panhead	3		
2- 6	462-15421-01-98	COVER, crankcase right	1		
2- 7	353-15451-00	GASKET, crankcase cover	1		
2- 8	91810-02014	PIN, dowel (6.4-10-14)	2		
2- 9	353-15437-02	SCRAPER, oil	1		
2-10	92506-06040	SCREW, panhead	2		
2-11	92506-06030	SCREW, panhead	6		
2-12	92506-06020	SCREW, panhead	1		
2-13	462-15416-01-98	COVER, oil pump	1		
2-14	92506-06025	SCREW, panhead	3		
2-15	353-15362-00	PLUG, oil level	1		
2-16	93210-21190	O-RING (2.6-20.6)	1		
2-17	367-13174-00	HOLDER, oil pipe	1		

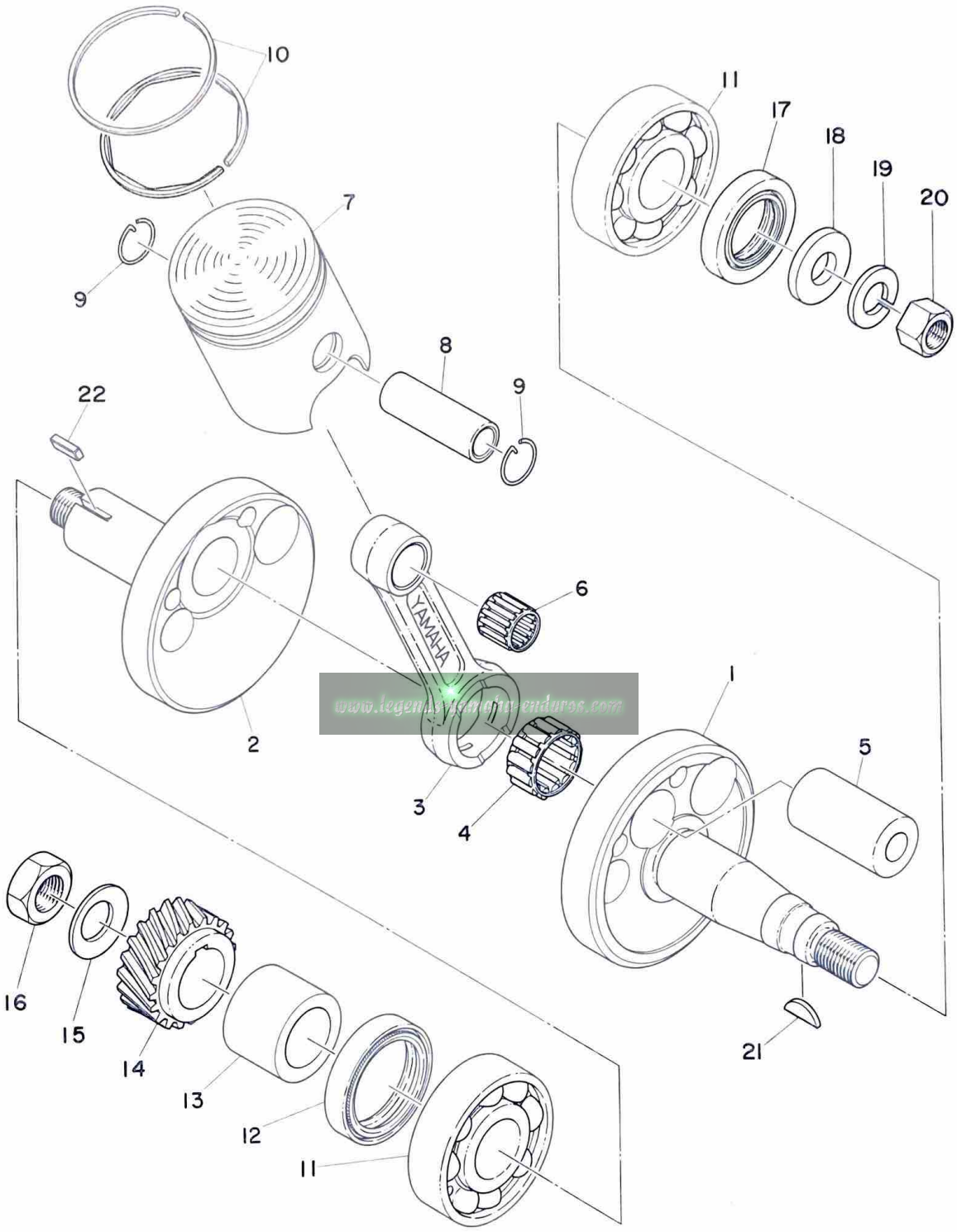
Fig. 3 CRANK · PISTON



CRANK · PISTON

Ref. No.	Parts No.	Description	Q'ty	Applicable Machine No.	Remarks
3- 0-1	367-11400-00	CRANK ASS'Y	1		
3- 1	367-11412-00	. CRANK, left	1		
3- 2	367-11422-00	. CRANK, right	1		
3- 3	353-11651-00	. ROD, connecting	1		
3- 4	93310-41809	. BEARING, con-rod big end ..	1		
3- 5	257-11681-00	. PIN, crank	1		
3- 6	93310-11268	BEARING, con-rod small end ..	1		
3- 7	367-11631-00-96	PISTON (46.96mm STD)	1	} U. R	
	367-11631-00-98	PISTON (46.98mm STD)	1		
	367-11635-00	PISTON (47.25mm 1st O.S)	1		Alternate Parts
	367-11636-00	PISTON (47.50mm 2nd O.S)	1		Alternate Parts
3- 8	122-11633-00	PIN, piston	1		
3- 9	132-11634-00	CLIP, piston pin	2		
3-10	367-11610-00	PISTON RING SET	1s		
	367-11610-10	PISTON RING SET (1st O.S) ...	1s		Alternate Parts
	367-11610-20	PISTON RING SET (2nd O.S) ...	1s		Alternate Parts
3-11	93306-20412	BEARING (6204 C3)	2		
3-12	93103-28011	OIL SEAL (SE-28-40-8)	1		
3-13	248-16136-00	COLLAR, distance	1		
3-14	353-16111-01	GEAR, primary drive (19T) ...	1		
3-15	164-16119-00	SPRING, bellevile	1		
3-16	353-16144-00	NUT, lock	1		
3-17	93102-20009	OIL SEAL (SD-20-35-7)	1		
3-18	214-11557-01	WASHER	1		
3-19	92901-12100	WASHER, spring	1		
3-20	98801-12200	NUT	1		
3-21	146-11545-00	KEY, woodruff	1		
3-22	353-11546-00	KEY, woodruff	1		

Fig. 3 CRANK · PISTON

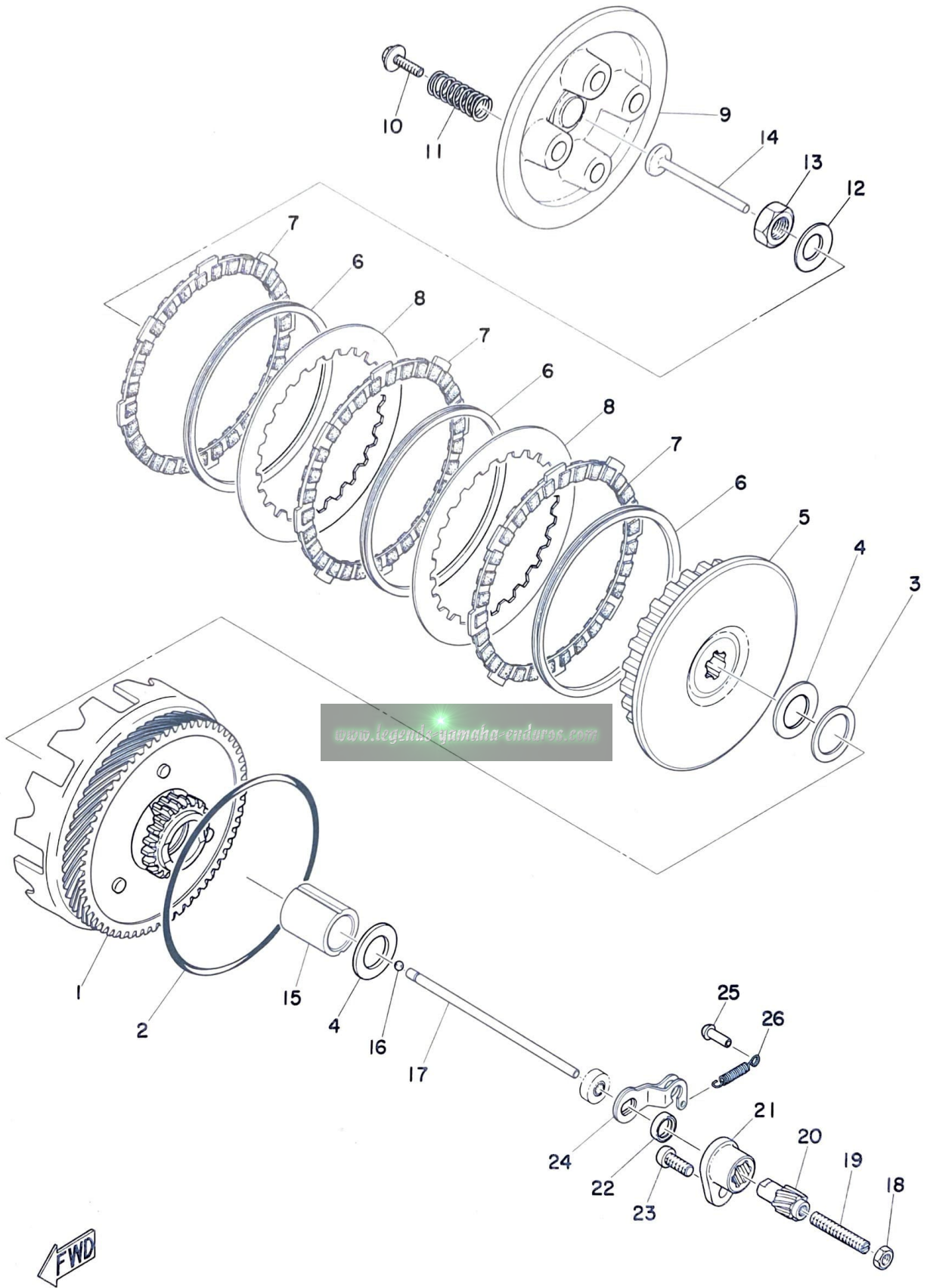


CRANK · PISTON

Ref. No.	Parts No.	Description	Q'ty	Applicable Machine No.	Remarks
ALTERNATE PARTS					
3- 0-2	367-11630-00	PISTON ASS'Y (STD)	1		
	367-11630-10	PISTON ASS'Y (1st O.S)	1		
	367-11630-20	PISTON ASS'Y (2nd O.S)	1		

www.legends-yamaha-enduros.com

Fig. 4 CLUTCH



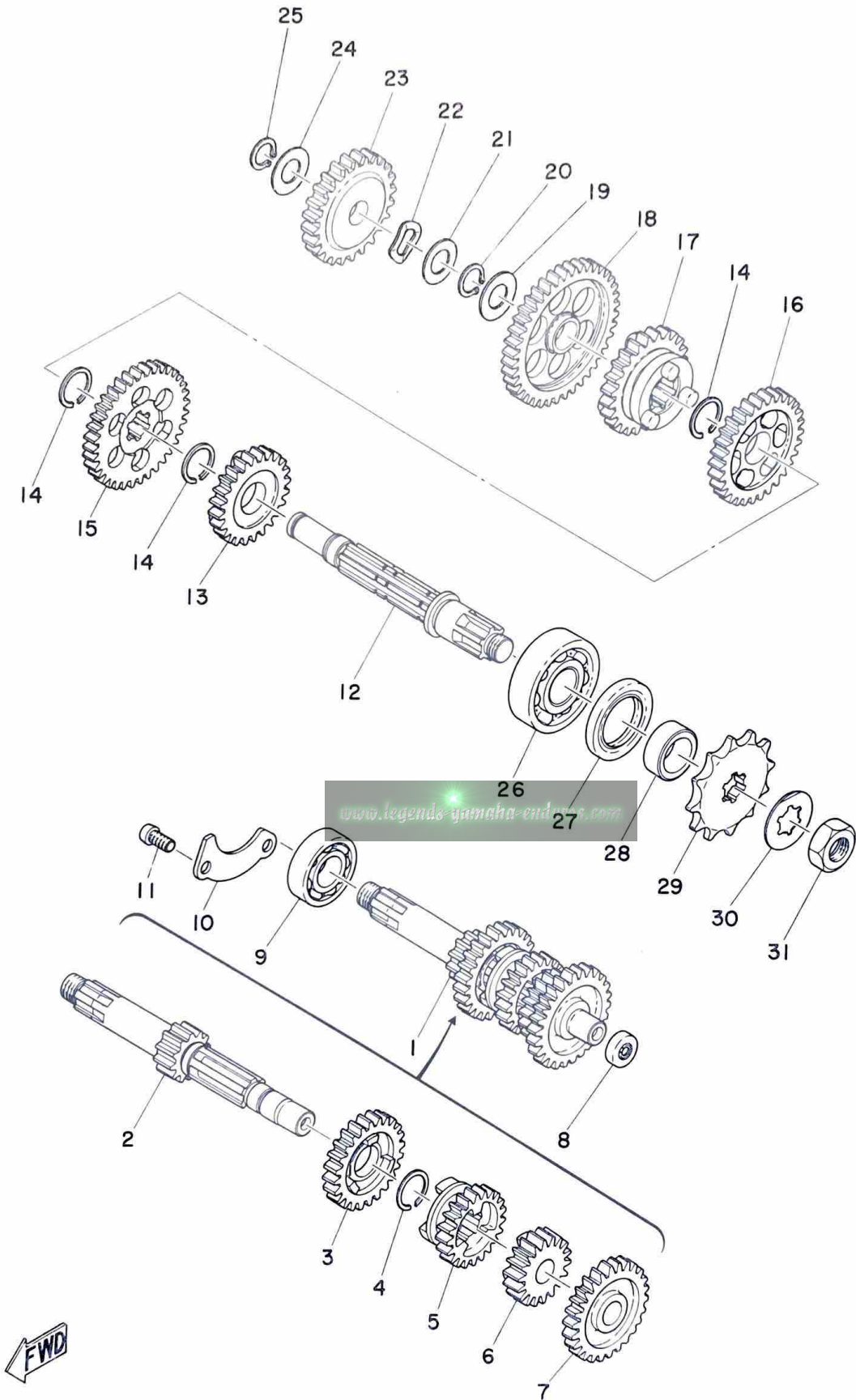
CLUTCH

Ref. No.	Parts No.	Description	Q'ty	Applicable Machine No.	Remarks
4- 0-1	353-16301-00	CLUTCH ASS'Y	1		
4- 1	353-16150-01	. PRIMARY DRIVEN GEAR COMP. 1	1		
4- 2	93210-98202	. . O-RING (5.33-97.76)	1		
4- 3	116-16153-00	. PLATE, thrust (23-30-1.5) ..	1		
4- 4	122-16164-00	. PLATE, thrust (17.2-30-2) ..	2		
4- 5	353-16371-00	. BOSS, clutch	1		
4- 6	131-16367-00	. RING, cushion	3		
4- 7	131-16321-00	. PLATE, friction	3		
4- 8	257-16324-00	. PLATE, clutch	2		
4- 9	353-16351-00	. PLATE, pressure	1		
4-10	90119-05001	. BOLT	4		
4-11	132-16333-00	. SPRING, clutch	4		
4-12	164-16119-00	SPRING, bellevile	1		
4-13	137-16377-00	NUT, clutch boss	1		
4-14	137-16356-00	ROD, push 1	1		
4-15	131-16181-01	SPACER	1		
4-16	93503-16003	BALL (3/16 inch)	1		
4-17	353-16357-00	ROD, push 2	1		
4-18	98801-06300	NUT	1		
4-19	241-16343-00	SCREW, adjusting	1		
4-20	241-16341-01	SCREW, push	1		
4-21	353-16396-00	HOUSING, push screw	1		
4-22	93104-11028	OIL SEAL (SO-10.5-15-3)	1		
4-23	92501-06015	SCREW, panhead	1		
4-24	451-16342-00	LEVER, push	1		
4-25	132-16346-00	HOOK, spring	1		
4-26	257-16345-00	SPRING, lever return	1		

TRANSMISSION

Ref. No.	Parts No.	Description	Q'ty	Applicable Machine No.	Remarks
5- 1	353-17410-01	MAIN AXLE COMP.	1		
5- 2	353-17411-01	. AXLE, main (12T)	1		
5- 3	353-17141-01	. GEAR, 4th pinion (24T)	1		
5- 4	257-17414-00	. CLIP	1		
5- 5	353-17131-01	. GEAR, 3rd pinion (21T)	1		
5- 6	353-17121-00	. GEAR, 2nd pinion (17T)	1		
5- 7	353-17151-00	. GEAR, 5th pinion (26T)	1		
5- 8	257-15389-00	SEAL, push rod	1		
5- 9	93306-20303	BEARING (6203Z)	1		
5-10	353-17471-00	PLATE, bearing cover	1		
5-11	92501-06012	SCREW, panhead	2		
5-12	353-17421-01	AXLE, drive	1		
5-13	353-17251-00	GEAR, 5th wheel	1		
5-14	257-17414-00	CLIP	3		
5-15	353-17221-00	GEAR, 2nd wheel	1		
5-16	353-17231-00	GEAR, 3rd wheel	1		
5-17	353-17241-00	GEAR, 4th wheel	1		
5-18	353-17211-00	GEAR, 1st wheel	1		
5-19	257-17219-00	SHIM (13.2-24-0.6)	} U.R 1		
	462-17219-00	SHIM (13.2-24-0.8)			
5-20	93410-13004	CIRCLIP (S-13)	1		
5-21	201-15653-00	WASHER, thrust (13.2-23-1) ...	1		
5-22	137-15643-00	WASHER, wave	1		
5-23	353-15651-00	GEAR, kick idle (25T)	1		
5-24	102-18137-00-10	WASHER, change shaft (12.2-17.5-1.0)	1		
5-25	93410-12003	CIRCLIP (S-12)	1		
5-26	93306-30305	BEARING (6303)	1		

Fig. 5 TRANSMISSION

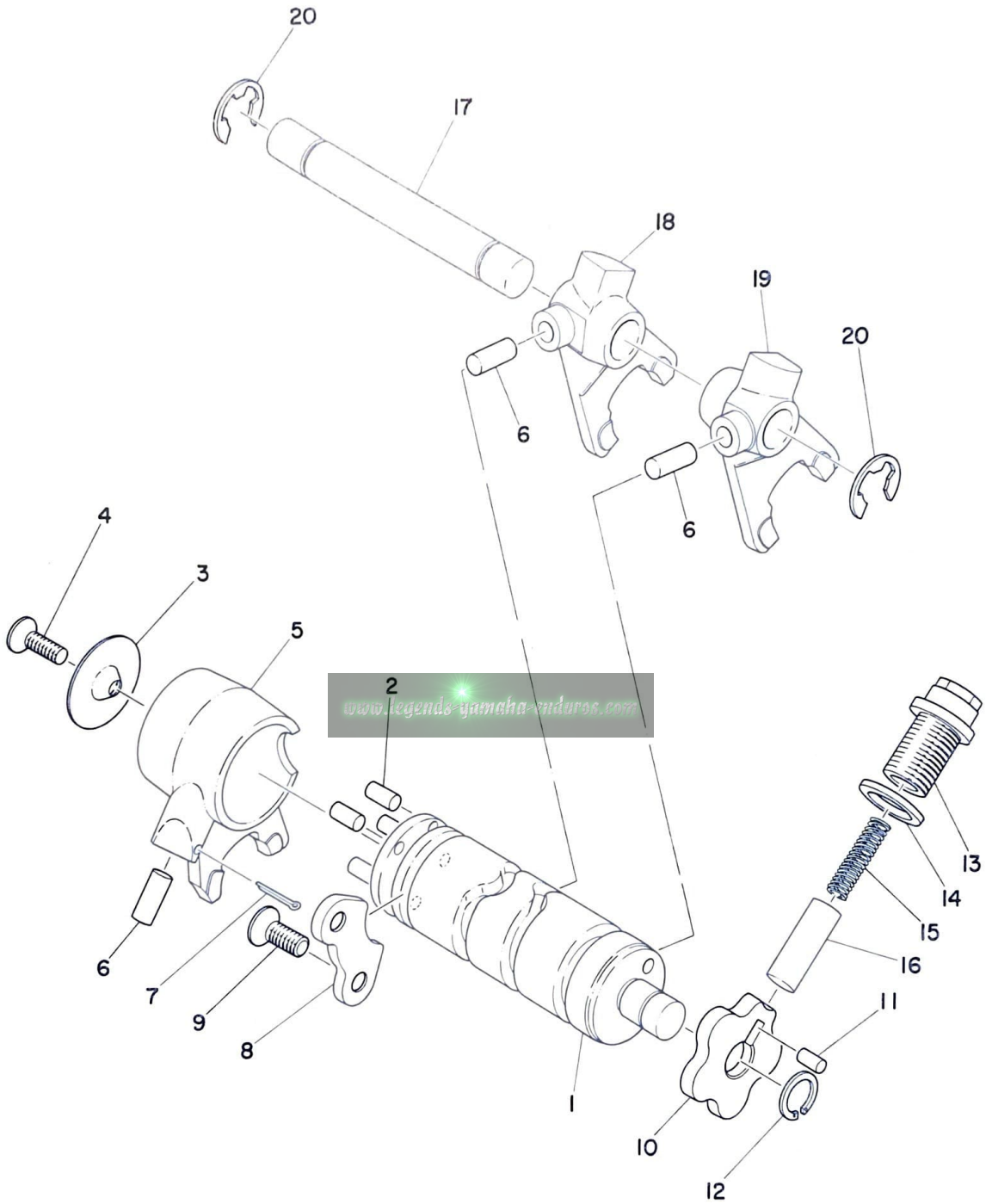


TRANSMISSION

Ref. No.	Parts No.	Description	Q'ty	Applicable Machine No.	Remarks
5-27	93102-25017	OIL SEAL (SD-25-40-5)	1		
5-28	257-17462-00	COLLAR, distance	1		
5-29	257-17461-30	SPROCKET, drive (13T)	} U.R 1		STD
	257-17461-40	SPROCKET, drive (14T)			
	257-17461-50	SPROCKET, drive (15T)			
5-30	257-17464-00	WASHER, lock	1		
5-31	257-17463-00	NUT, lock	1		

www.legends-yamaha-enduros.com

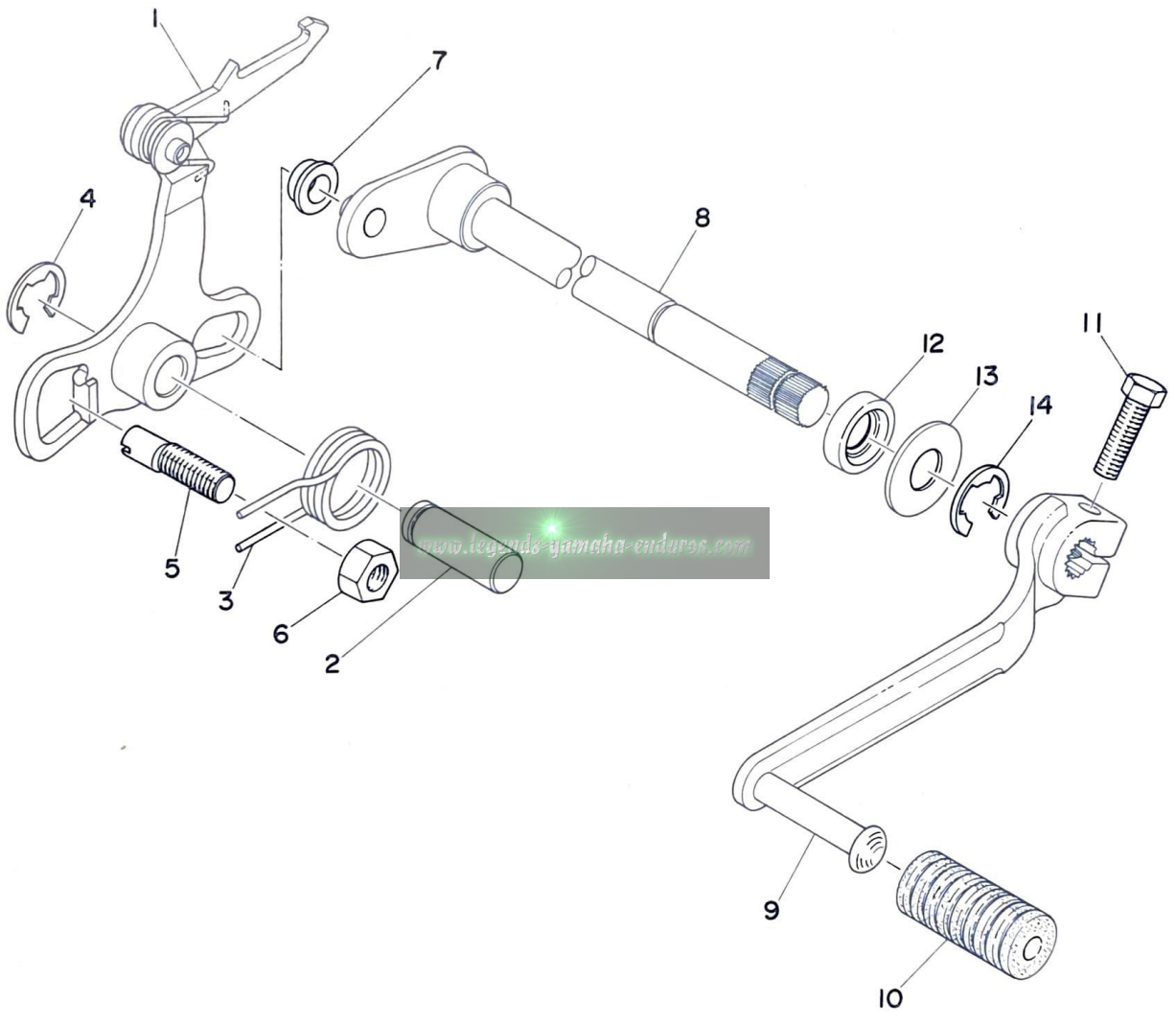
Fig. 6 SHIFTER 1



SHIFTER 1

Ref. No.	Parts No.	Description	Q'ty	Applicable Machine No.	Remarks
6- 1	353-18541-01	CAM, shift	1		
6- 2	93604-10011	PIN, dowel (4-10)	4		
6- 3	214-18561-00	PLATE, side	1		
6- 4	98701-05012	SCREW, flathead	1		
6- 5	353-18511-01	FORK, shift 1	1		
6- 6	93606-14081	PIN, dowel (6-14.5)	3		
6- 7	91401-25017	PIN, cotter	1		
6- 8	353-18562-00	PLATE, stopper 2	1		
6- 9	92701-06012	SCREW, flathead	2		
6-10	353-18141-01	PLATE, stopper 1	1		
6-11	93604-08071	PIN, dowel (4-8)	1		
6-12	93440-12026	CIRCLIP (12 ϕ special)	1		
6-13	90109-14223	BOLT	1		
6-14	137-15353-00	GASKET, drain plug (14-21-1.5)	1		
6-15	90501-09292	SPRING, compression	1		
6-16	278-18547-02	STOPPER, cam	1		
6-17	214-18531-00	BAR, shift fork guide	1		
6-18	353-18512-01	FORK, shift 2	1		
6-19	353-18513-01	FORK, shift 3	1		
6-20	93430-10016	CIRCLIP (E-10)	2		

Fig. 7 SHIFTER 2

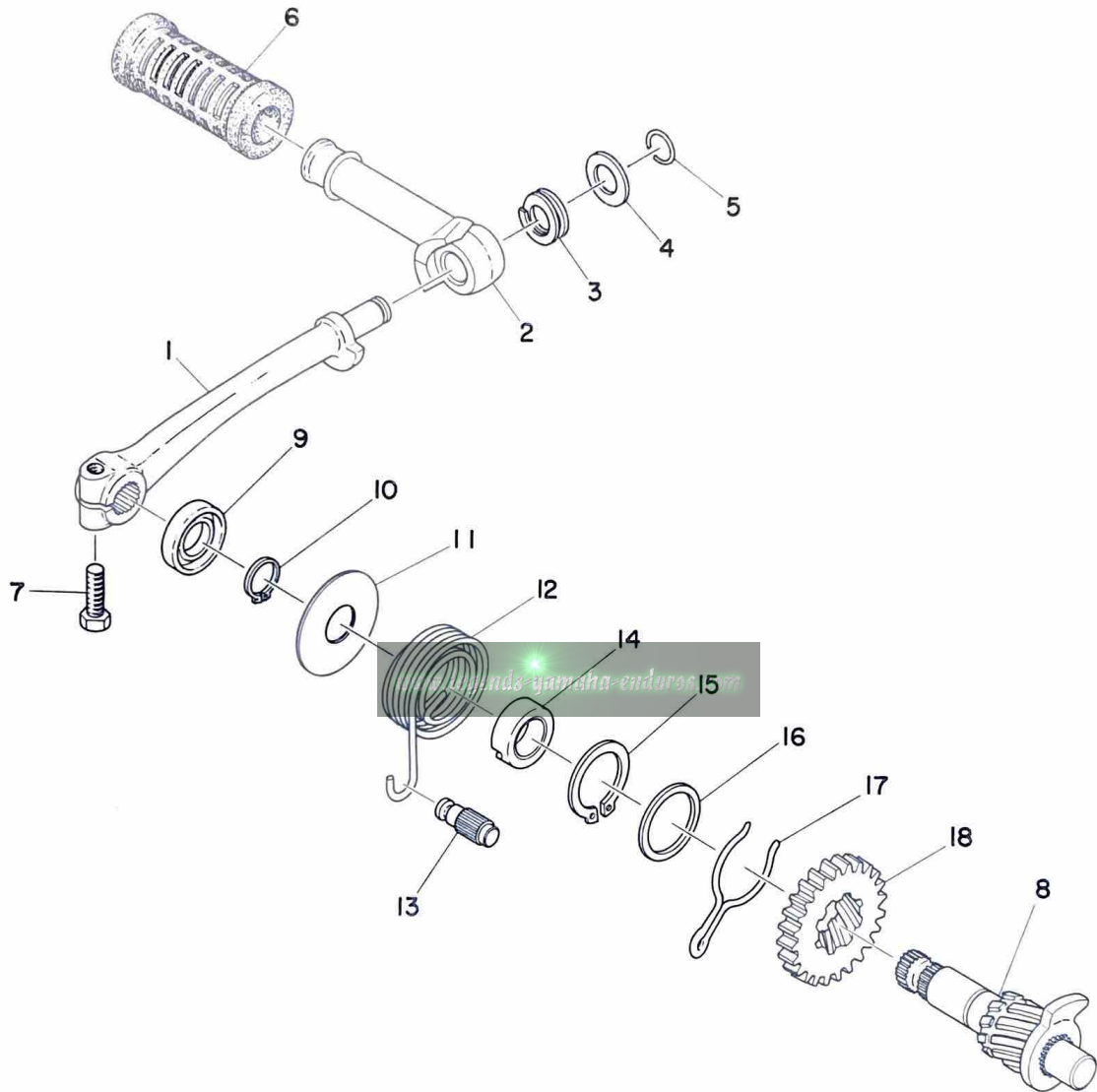


SHIFTER 2

Ref. No.	Parts No.	Description	Q'ty	Applicable Machine No.	Remarks
7- 1	353-18120-00	CHANGE LEVER ASS'Y	1		
7- 2	353-18197-00	SHAFT	1		
7- 3	353-18124-00	SPRING, shaft return	1		
7- 4	93430-10016	CIRCLIP (E-10)	1		
7- 5	132-18133-00	SCREW, adjusting	1		
7- 6	98801-08200	NUT	1		
7- 7	214-18178-00	ROLLER, change lever 1	1		
7- 8	353-18101-00	CHANGE SHAFT ASS'Y	1		
7- 9	353-18111-00-93	PEDAL, change	1		
7-10	132-18113-01	COVER, change pedal	1		
7-11	91101-06020	BOLT	1		
7-12	93101-12004	OIL SEAL (S-12-22-5)	1		
7-13	132-18137-00	WASHER, change axle (12.1-26-1.6)	1		
7-14	93430-10016	CIRCLIP (E-10)	1		

www.legends-yamaha-enduros.com

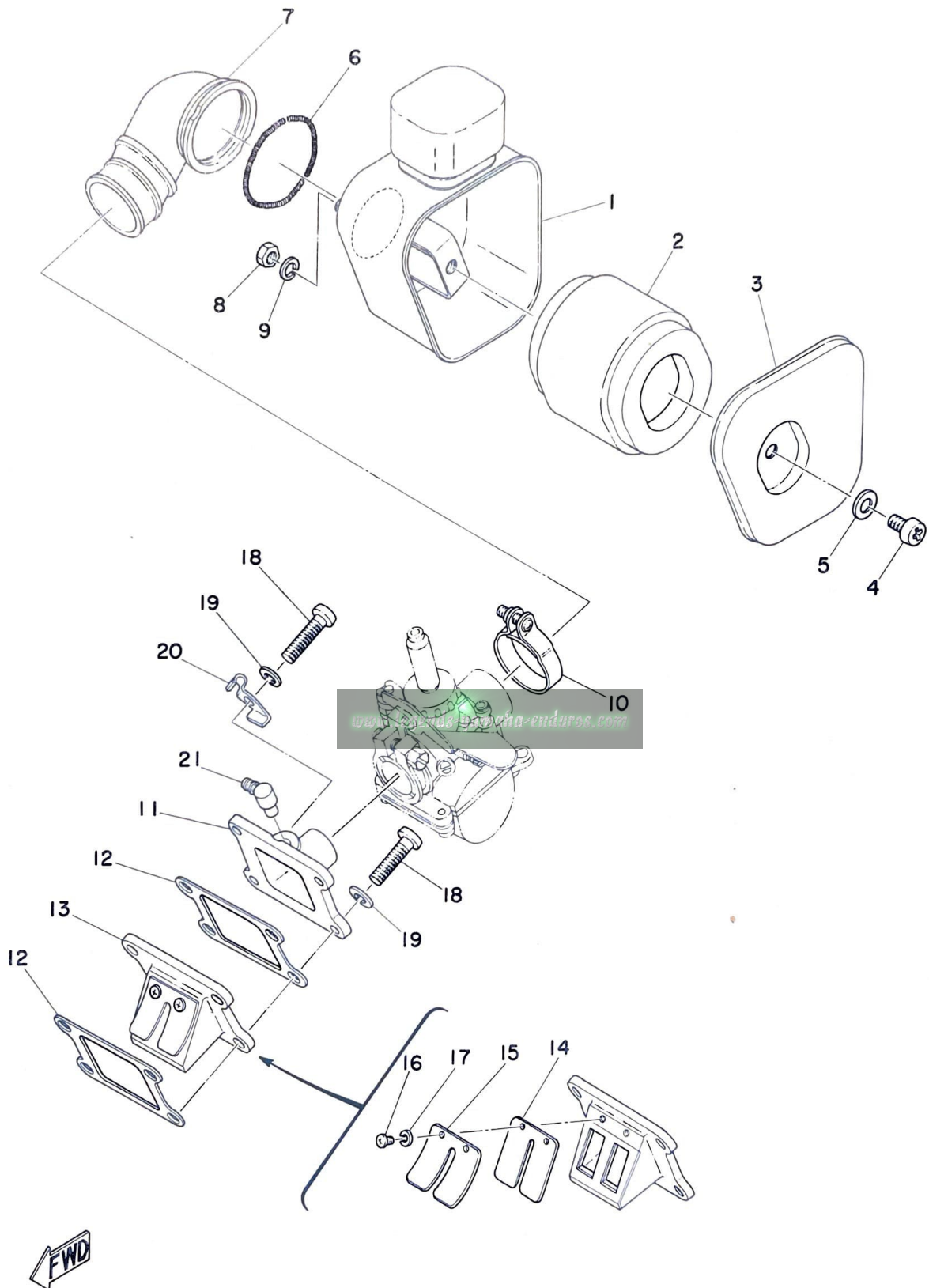
Fig. 8 KICK STARTER



KICK STARTER

Ref. No.	Parts No.	Description	Q'ty	Applicable Machine No.	Remarks
8- 0-1	462-15610-00-93	KICK CRANK ASS'Y	1		
8- 1	462-15611-00	. CRANK, kick	1		Not for sale
8- 2	122-15612-02	. LEVER, kick	1		
8- 3	132-15625-01	. SPRING, kick lever	1		
8- 4	132-15616-01	. WASHER, kick lever	1		
8- 5	132-15617-00	. CLIP, kick lever	1		
8- 6	156-15618-01	COVER, kick lever	1		
8- 7	91101-06025	BOLT	1		
8- 8	462-15660-00	KICK AXLE ASS'Y	1		
8- 9	93109-15001	OIL SEAL (SDO-15-26-6)	1		
8-10	93410-15005	CIRCLIP (S-15)	1		
8-11	462-15676-00	COVER, kick spring	1		
8-12	90508-26196	SPRING, kick	1		
8-13	248-15668-00	STOPPER, kick spring	1		
8-14	462-15666-00	SPACER	1		
8-15	93410-25017	CIRCLIP (S-25)	1		
8-16	117-15644-00	SHIM (25.1-32-1)	1		
8-17	353-15687-00	CLIP, kick	1		
8-18	353-15641-00	GEAR, kick (26T)	1		

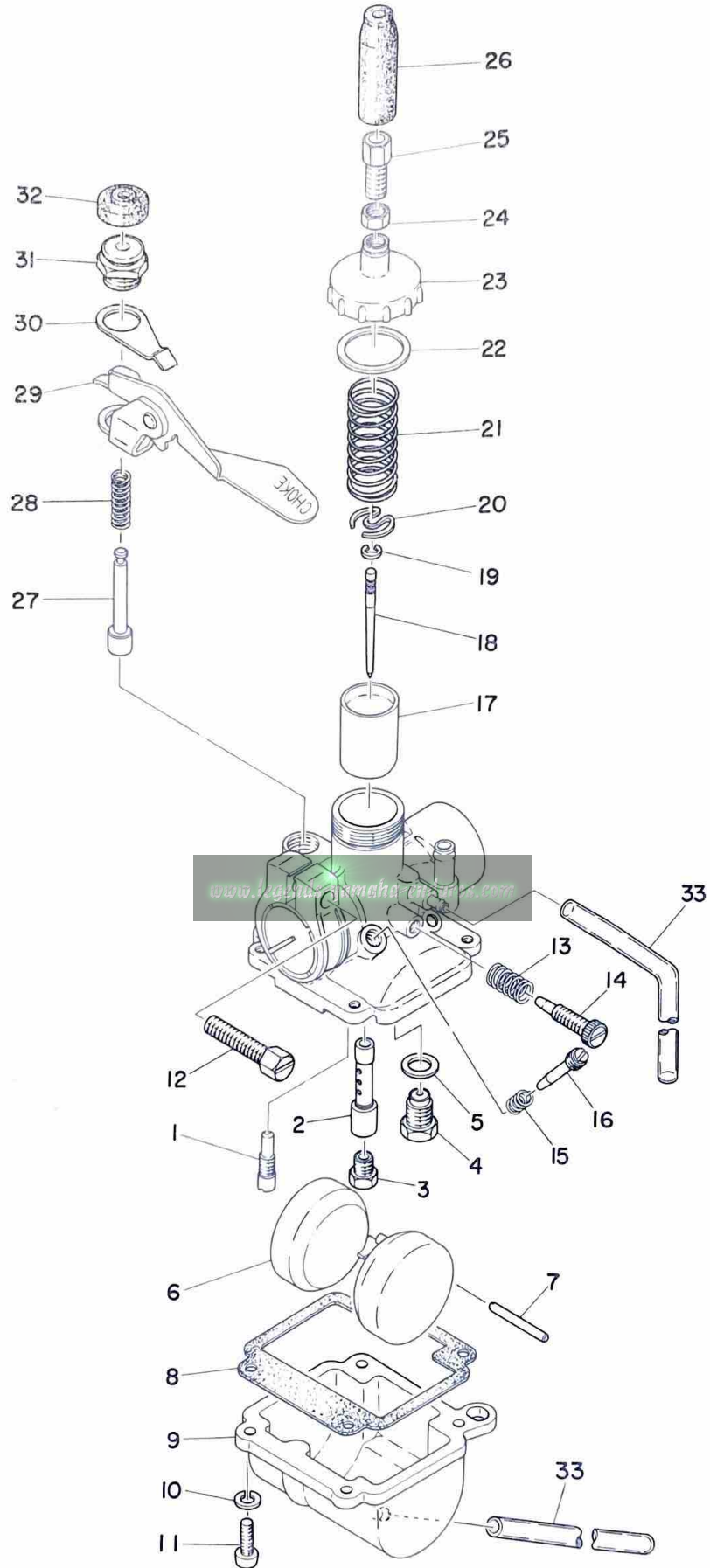
Fig. 9 INTAKE



INTAKE

Ref. No.	Parts No.	Description	Q'ty	Applicable Machine No.	Remarks
9- 1	462-14411-01	CASE, air cleaner	1		
9- 2	367-14451-00	ELEMENT, air cleaner	1		
9- 3	367-14412-00	CAP, cleaner case	1		
9- 4	92501-06010	SCREW, panhead	1		
9- 5	92901-06200	WASHER, plain	1		
9- 6	367-14455-01	BAND	1		
9- 7	462-14453-00	JOINT, air cleaner	1		
9- 8	98801-06100	NUT	2		
9- 9	92901-06100	WASHER, spring	2		
9-10	353-14455-00	BAND	1		
9-11	367-13565-00-98	JOINT	1		
9-12	353-13621-00	PACKING, valve seat	2		
9-13	353-13610-00	REED VALVE ASS'Y	1		
9-14	314-13613-00	. VALVE, reed	1		
9-15	314-13616-01	. STOPPER, reed valve	1		
9-16	98512-03007	. SCREW, panhead	2		
9-17	92901-03100	. WASHER, spring	2		
9-18	92501-06020	SCREW, panhead	4		
9-19	92901-06100	WASHER, spring	4		
9-20	367-15378-00	HOLDER	1		
9-21	278-13552-01	NOZZLE	1		

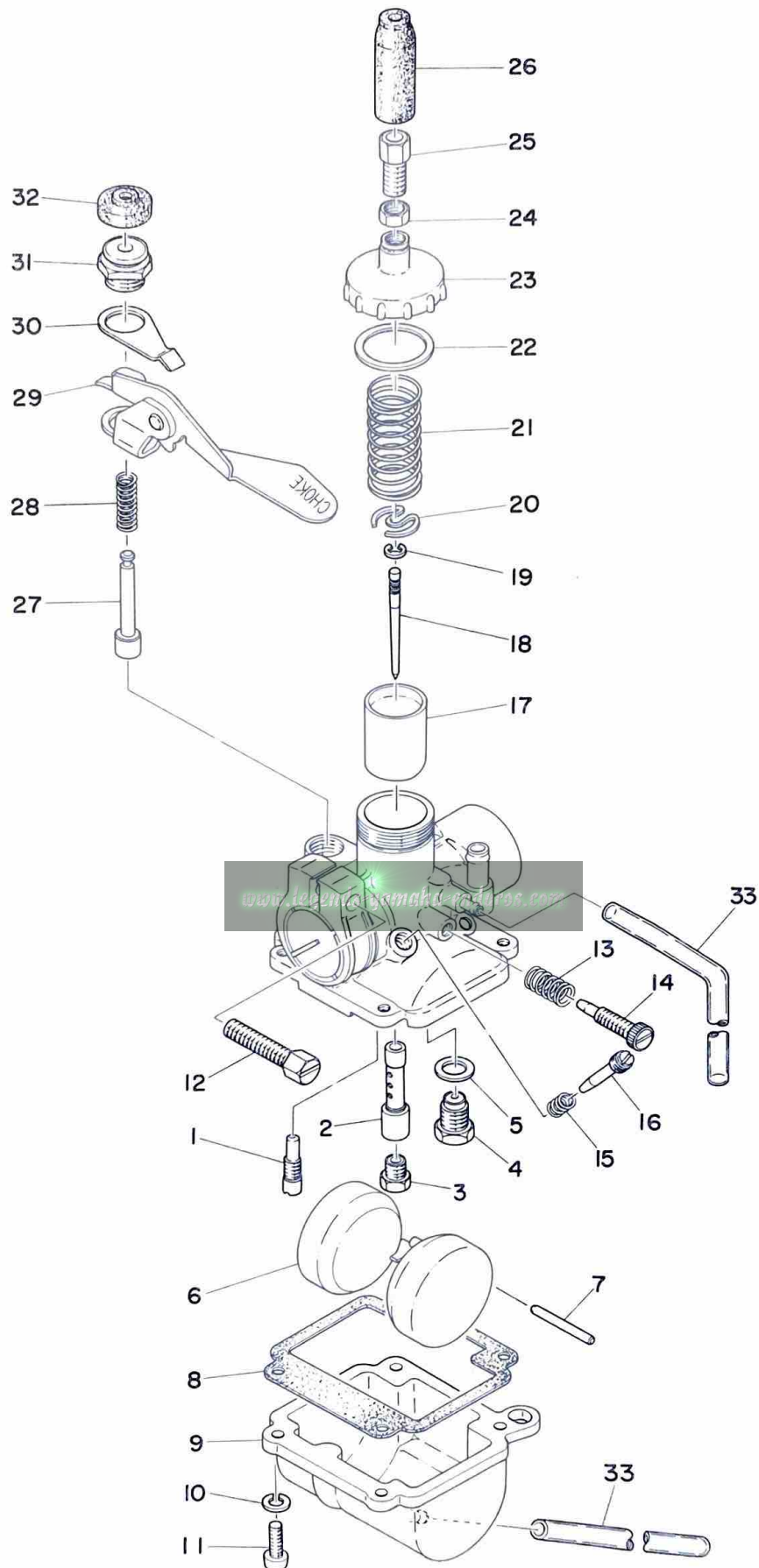
Fig. 10 CARBURETOR



CARBURETOR

Ref. No.	Parts No.	Description	Q'ty	Applicable Machine No.	Remarks
10- 0-1	462-14301-60	CARBURETOR ASS'Y	1		
10- 1	367-14342-16	. JET, pilot (#32)	} U.R 1		STD
	367-14342-17	. JET, pilot (#34)			
	367-14342-18	. JET, pilot (#36)			
10- 2	462-14341-00	. NOZZLE, main	1		
10- 3	462-14343-41	. JET, main (#82)	} U.R 1		STD
	462-14343-42	. JET, main (#84)			
	462-14343-43	. JET, main (#86)			
	462-14343-44	. JET, main (#88)			
	462-14343-45	. JET, main (#90)			
10- 4	367-14390-14	. VALVE SEAT ASS'Y (#1.4)	1		
10- 5	367-14195-00	. WASHER, valve seat	1		
10- 6	367-14385-00	. FLOAT	1		
10- 7	367-14386-00	. PIN, float	1		
10- 8	367-14384-00	. GASKET	1		
10- 9	367-14381 00	. BODY, float chamber	1		
10-10	92901-04100	. WASHER, spring	4		
10-11	98501-04010	. SCREW, panhead	4		
10-12	367-14125-00	. SCREW, body fitting	1		
10-13	646-14212-00	. SPRING, pilot adjusting	1		
10-14	367-14211-00	. SCREW, pilot adjusting	1		
10-15	367-14337-00	. SPRING, air adjusting	1		
10-16	367-14323-00	. SCREW, air adjusting	1		
10-17	367-14312-10	. VALVE, throttle (#1.0)	} U.R 1		STD
	367-14312-15	. VALVE, throttle (#1.5)			
	367-14312-20	. VALVE, throttle (#2.0)			
10-18	462-14336-00	. NEEDLE	1		

Fig. 10 CARBURETOR



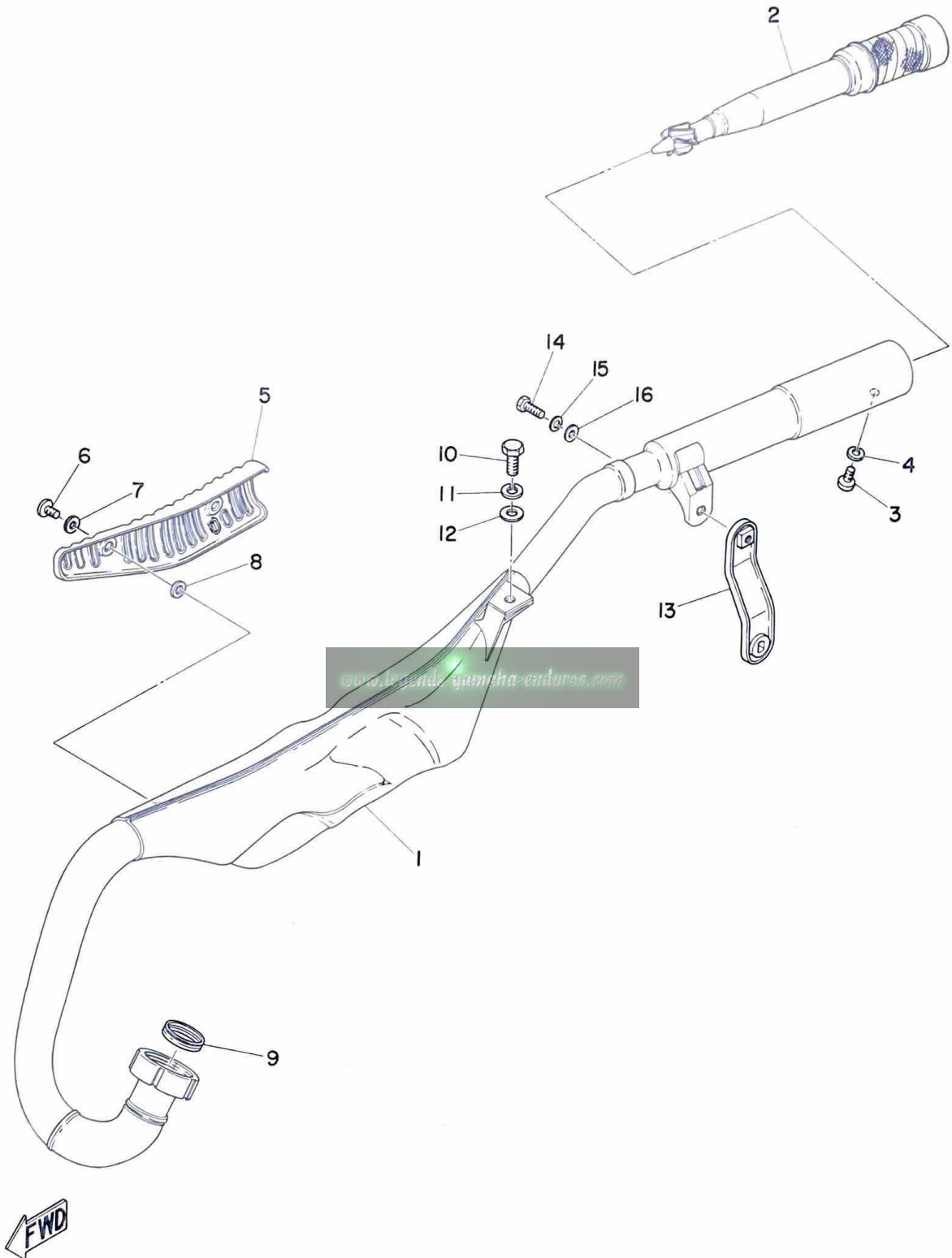
FWD

CARBURETOR

Ref. No.	Parts No.	Description	Q'ty	Applicable Machine No.	Remarks
10-19	288-14137-00	. CLIP	1		
10-20	367-14136-00	. SEAT, spring	1		
10-21	367-14331-00	. SPRING, throttle valve	1		
10-22	367-14126-00	. PACKING	1		
10-23	367-14168-00-33	. CAP, mixing chamber	1		
10-24	288-14161-00	. NUT, wire adjusting	1		
10-25	288-14124-00	. SCREW, wire adjusting	1		
10-26	367-14169-00	. CAP	1		
10-27	367-14371-00	. PLUNGER, starter	1		
10-28	367-14335-00	. SPRING, plunger	1		
10-29	367-14375-00	. LEVER, starter	1		
10-30	367-14377-00	. STOPPER	1		
10-31	367-14374-00	. CAP, plunger	1		
10-32	367-14373-00	. COVER, plunger cap	1		
10-33	367-14396-00	. PIPE (3 ϕ -190)	2		

www.legends-yamaha-enduros.com

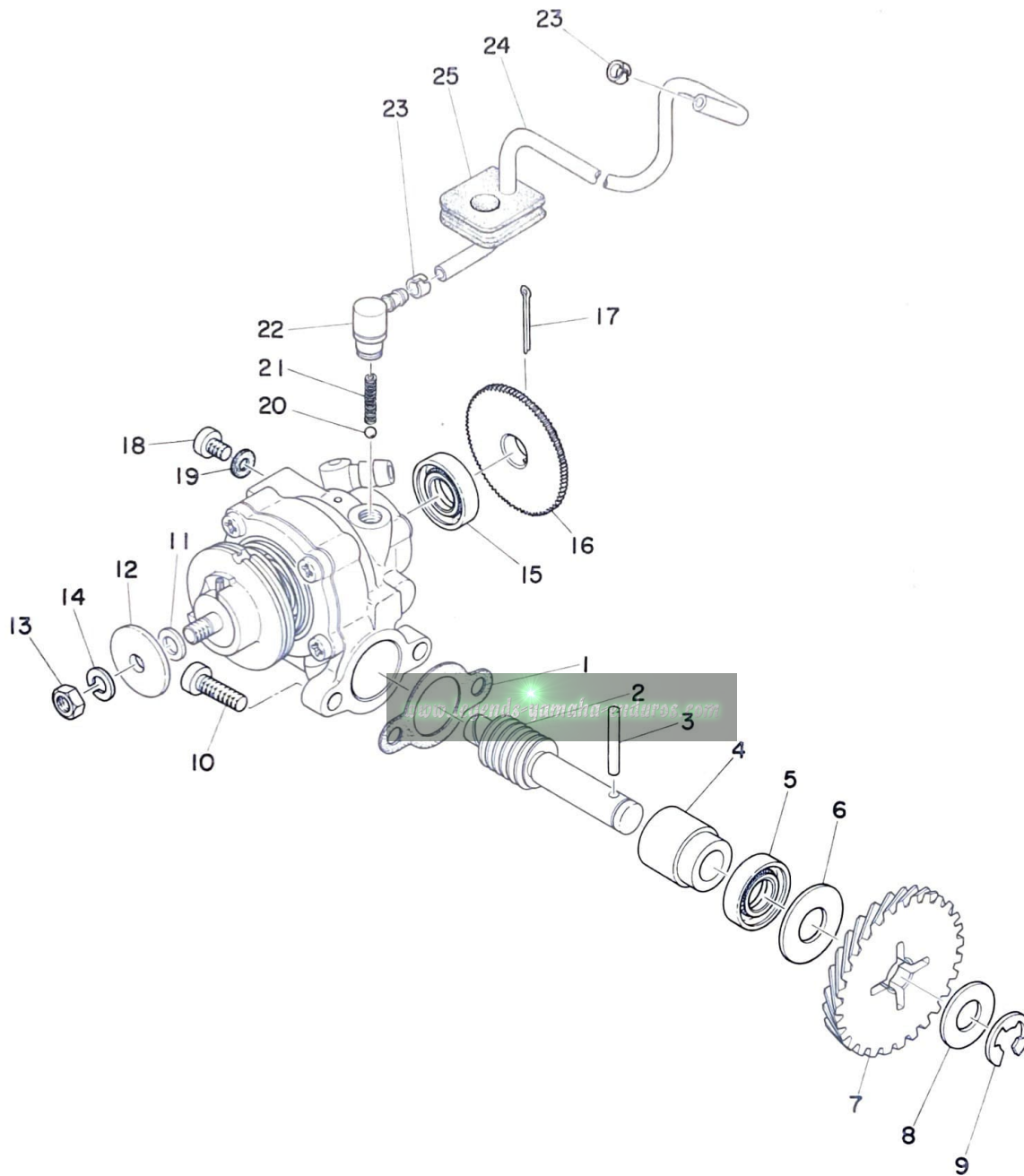
Fig. 11 EXHAUST



EXHAUST

Ref. No.	Parts No.	Description	Q'ty	Applicable Machine No.	Remarks
11- 1	462-14610-33	EXHAUST PIPE ASS'Y	1		
11- 2	451-14752-30	. PIPE, outlet	1		
11- 3	92501-06010	. SCREW, panhead	1		
11- 4	92901-06100	. WASHER, spring	1		
11- 5	462-14718-31	PROTECTOR, muffler	1		
11- 6	91903-06010	SCREW, bind	2		
11- 7	178-14766-00	WASHER, protector (6.2-12-1.5)	2		
11- 8	214-14766-00	WASHER, protector (6.2-12-3.0)	2		
11- 9	132-14613-00	GASKET, exhaust pipe	1		
11-10	97201-08020	BOLT	1		
11-11	92901-08100	WASHER, spring	1		
11-12	92901-08200	WASHER, plain	1		
11-13	462-14791-00	STAY, silencer 1	1		
11-14	91201-06018	BOLT	1		
11-15	92901-06100	WASHER, spring	1		
11-16	92901-06200	WASHER, plain	1		

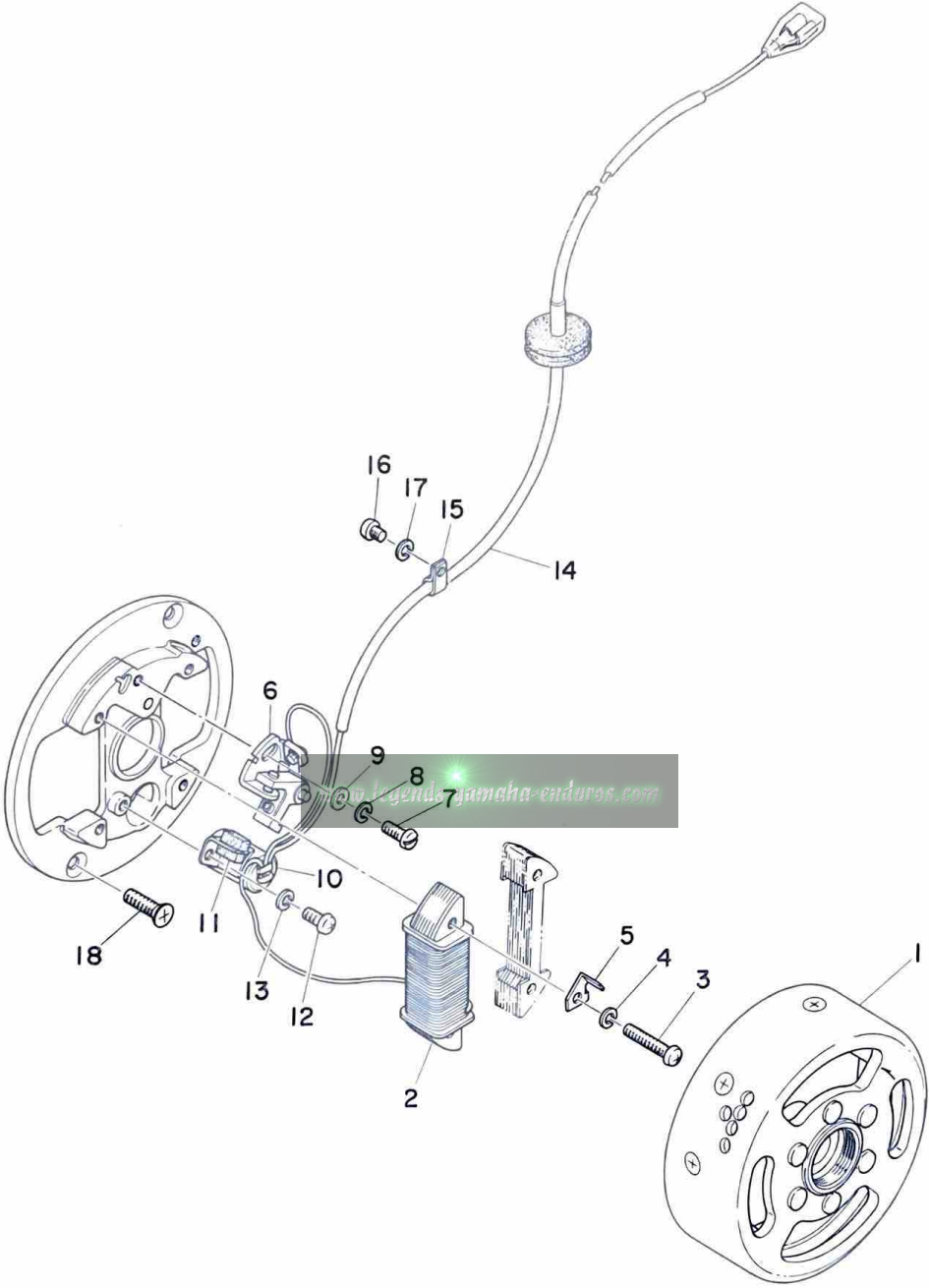
Fig. 12 OIL PUMP



OIL PUMP

Ref. No.	Parts No.	Description	Q'ty	Applicable Machine No.	Remarks
12- 1	126-13116-00	GASKET, pump case	1		
12- 2	257-13175-00	SHAFT, worm	1		
12- 3	93603-22028	PIN, dowel (3-21.8)	1		
12- 4	137-13176-00	METAL, worm shaft outer	1		
12- 5	93101-10001	OIL SEAL (S-10-21-5)	1		
12- 6	257-13177-00	WASHER (10.5-25-1.0)	1		
12- 7	353-13178-00	GEAR, drive (28T)	1		
12- 8	101-18137-00	WASHER, change shaft (10.5-20-1.0)	1		
12- 9	93430-08006	CIRCLIP (E-8)	1		
12-10	98501-05015	SCREW, panhead	2		
12- 0-1	462-13101-00	OIL PUMP ASS'Y	1		
12-11	137-13137-00-10	. SHIM, plunger (5.8-10-0.1)	1		
12-12	137-13138-01	. PLATE, adjusting	1		
12-13	98801-05200	. NUT	1		
12-14	92901-05100	. WASHER, springha-enduras	1		
12-15	93101-10001	. OIL SEAL (S-10-21-5)	1		
12-16	353-13128-00	. PLATE, starter	1		
12-17	91401-12018	. PIN, cotter	1		
12-18	98901-04008	. SCREW, bind	1		
12-19	137-13187-00	. GASKET, breather	1		
12-20	93505-32002	. BALL (5/32 inch)	1		
12-21	90501-02217	. SPRING, check ball	1		
12-22	402-13552-00	. NOZZLE	1		
12-23	90468-02033	. CLIP	2		
12-24	90445-05029	. PIPE, delivery (3 ϕ -180)	1		
12-25	248-13174-00	HOLDER, oil pipe	1		

Fig. 13 FLYWHEEL MAGNETO



FLYWHEEL MAGNETO

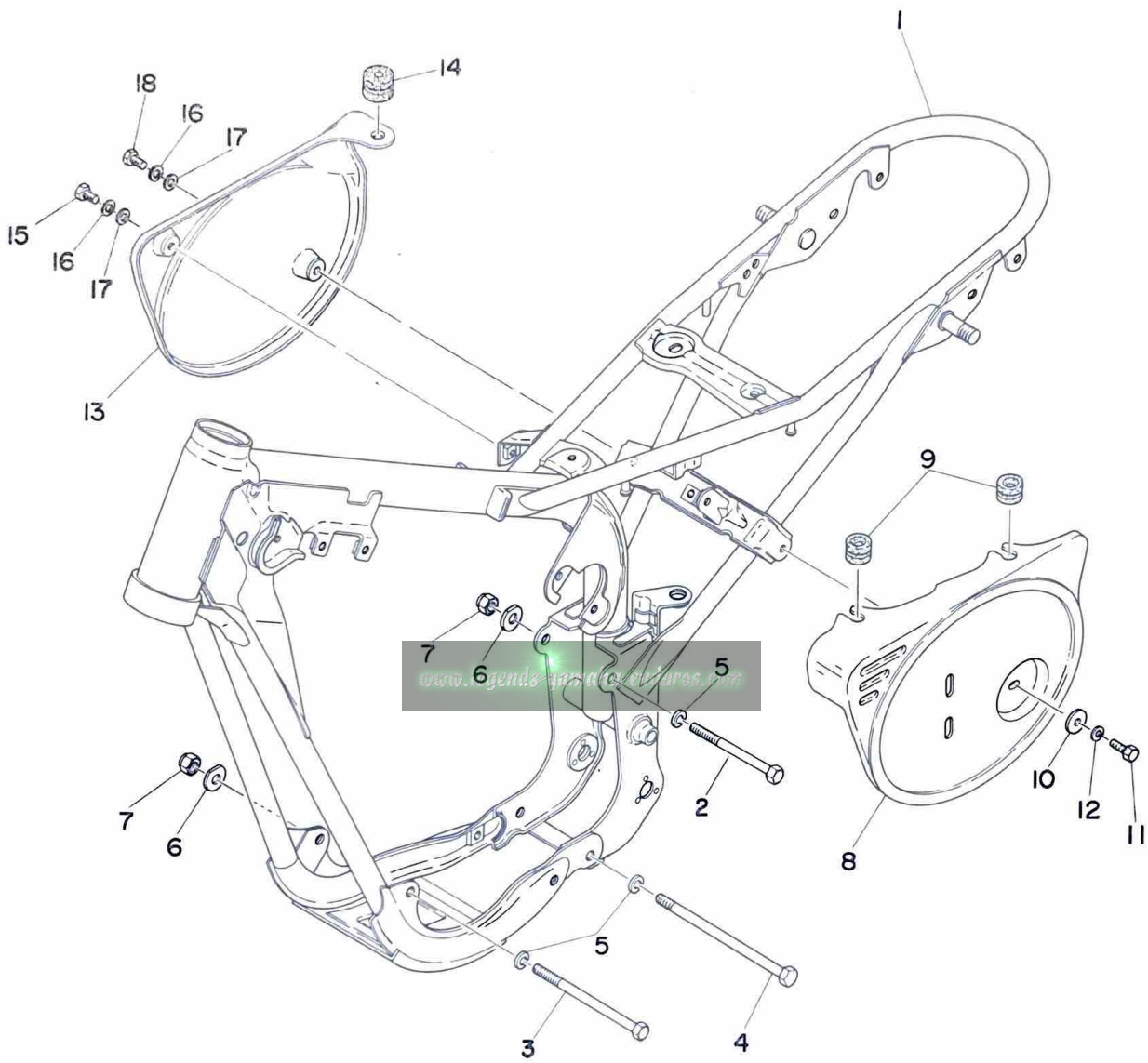
Ref. No.	Parts No.	Description	Q'ty	Applicable Machine No.	Remarks
13- 0-1	367-81300-21	FLYWHEEL MAGNETO ASS'Y	1		
13- 1	367-81350-20	. ROTOR ASS'Y	1		
13- 2	296-81312-21	. COIL, source	1		
13- 3	110-81348-20	. SCREW, panhead	2		
13- 4	92901-04100	. WASHER, spring	2		
13- 5	296-81332-20	. PLATE, timing	1		
13- 6	296-81321-21	. CONTACT BREAKER ASS'Y	1		
13- 7	110-81347-20	. SCREW, panhead	1		
13- 8	92901-04100	. WASHER, spring	1		
13- 9	92901-04200	. WASHER, plain	1		
13-10	296-81325-20	. CONDENSER	1		
13-11	116-81331-20	. LUBRICATOR	1		
13-12	110-81346-20	. SCREW, panhead	1		
13-13	92901-04100	. WASHER, spring	1		
13-14	367-81315-20	. LEAD WIRE	1		
13-15	367-81328-20	. CLAMP, lead	1		
13-16	165-81145-21	. SCREW, panhead	1		
13-17	92901-04100	. WASHER, spring	1		
13-18	98701-05015	SCREW, flathead	2		

CHASSIS

www.legends-yamaha-enduros.com



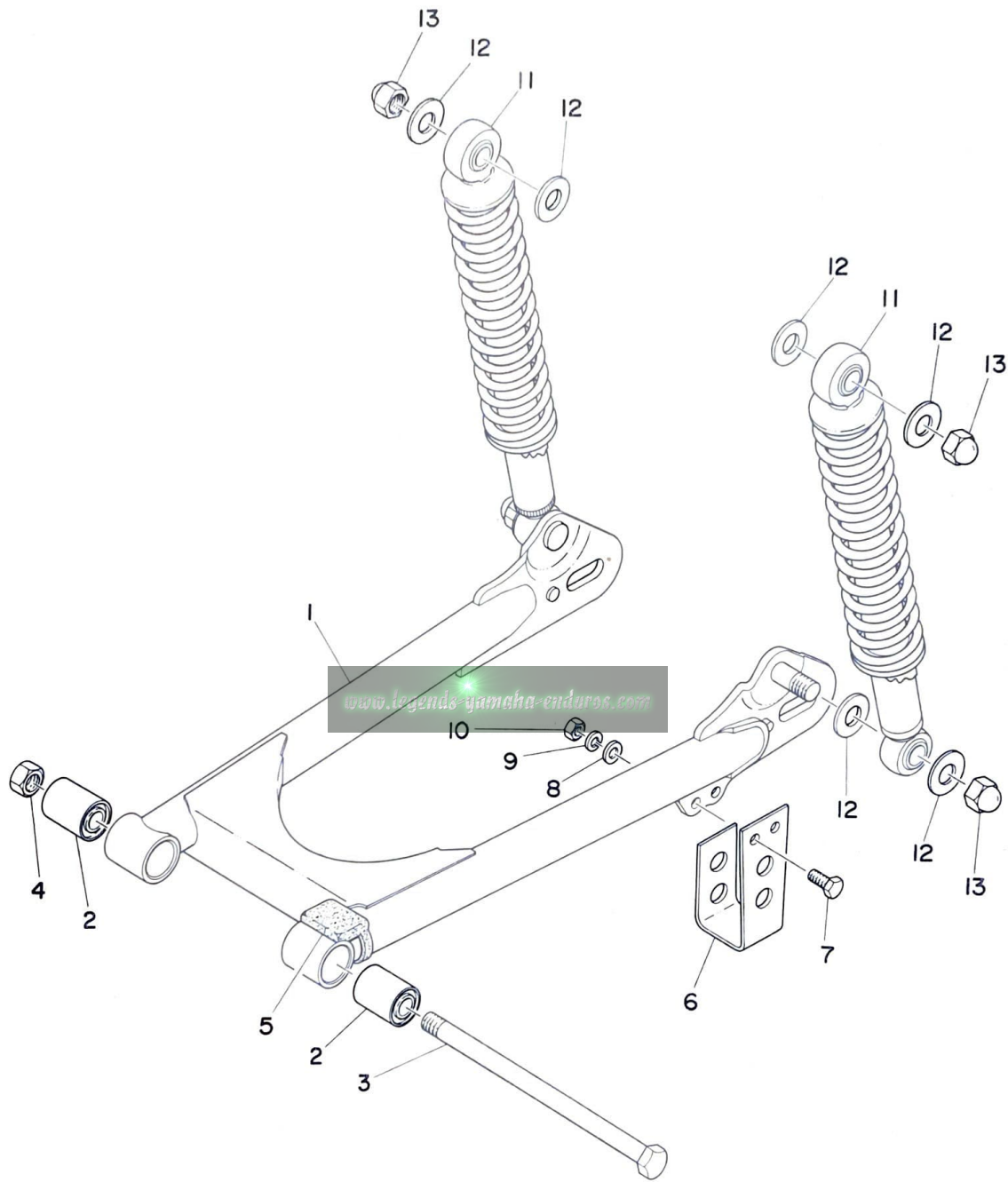
Fig. 14 FRAME · SIDE COVER



FRAME · SIDE COVER

Ref. No.	Parts No.	Description	Q'ty	Applicable Machine No.	Remarks
14- 1	462-21110-01-33	FRAME COMP.	1		Yamaha Black
14- 2	97101-08090	BOLT	1		
14- 3	97101-08120	BOLT	1		
14- 4	90101-08219	BOLT	1		
14- 5	92901-08100	WASHER, spring	3		
14- 6	90209-08050	WASHER 1	2		
14- 7	90185-08039	NUT U	2		
14- 8	462-21711-00-01	COVER, side left	1		Crystal Silver/ Frosting Black
14- 9	90480-12053	DAMPER, side cover	2		
14-10	116-28324-00	WASHER, leg shield 2 (6.5-20-1.6)	1		
14-11	91201-06015	BOLT	1		
14-12	92901-06100	WASHER, spring	1		
14-13	462-21721-00-01	COVER, side right	1		Crystal Silver/ Frosting Black
14-14	214-21746-00	DAMPER, tool box	1		
14-15	91201-06012	BOLT	1		
14-16	92901-06100	WASHER, spring	2		
14-17	92901-06200	WASHER, plain	2		
14-18	91201-06018	BOLT	1		

Fig. 15 REAR ARM · REAR CUSHION

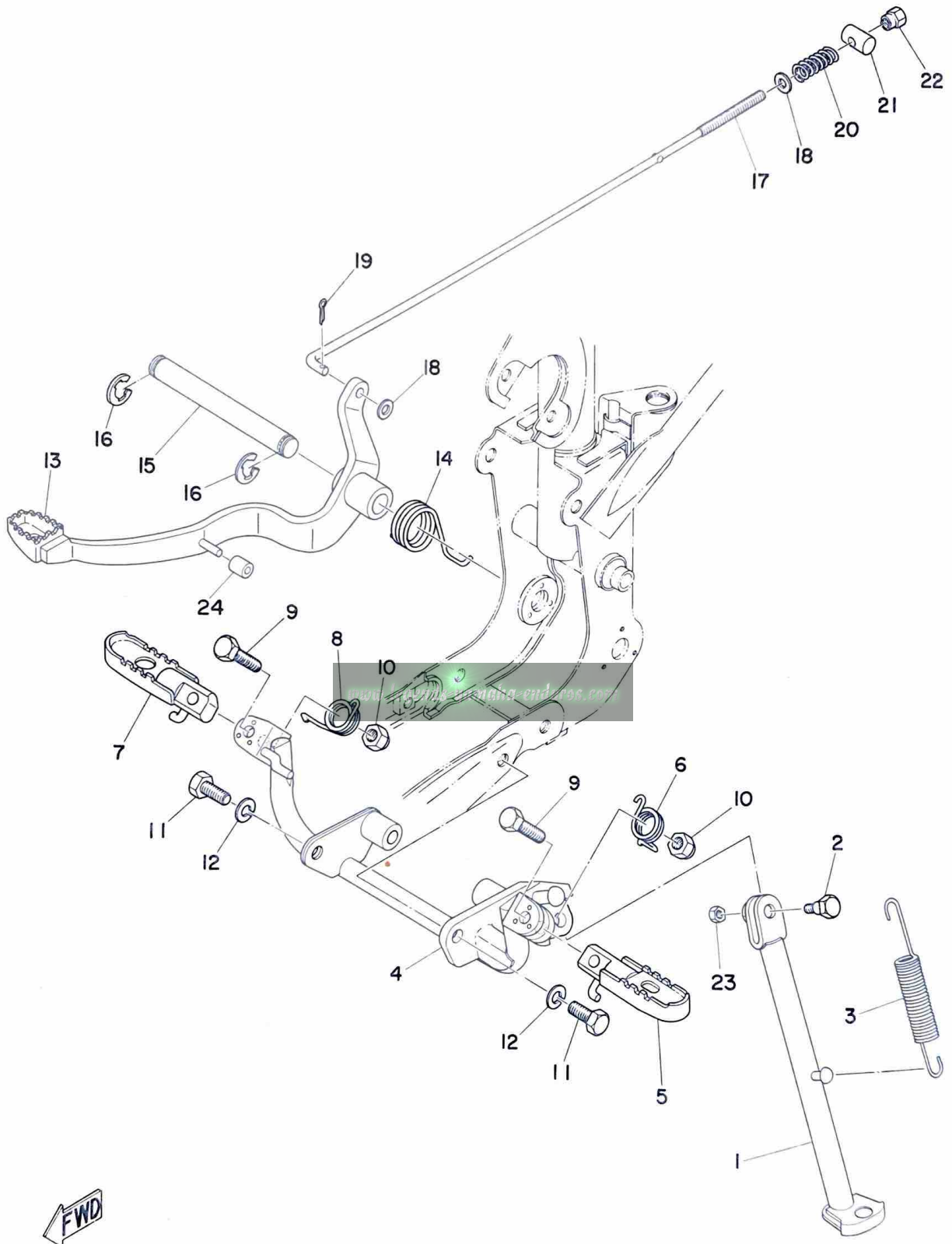


REAR ARM · REAR CUSHION

Ref. No.	Parts No.	Description	Q'ty	Applicable Machine No.	Remarks
15- 1	462-22110-00-33	REAR ARM COMP.	1		Yamaha Black
15- 2	102-22123-00	BUSHING, rear arm	2		
15- 3	288-22141-00	SHAFT, pivot	1		
15- 4	92801-10200	NUT	1		
15- 5	183-22151-00	SEAL, guard	1		
15- 6	462-22153-00-33	GUARD, chain	1		Yamaha Black
15- 7	91101-06015	BOLT	2		
15- 8	92901-06200	WASHER, plain	2		
15- 9	92901-06100	WASHER, spring	2		
15-10	98801-06200	NUT	2		
15-11	462-22210-22	REAR CUSHION ASS'Y	2		
15-12	122-22243-00	WASHER, rear cushion 1	8		
15-13	220-22251-00	NUT, cap	4		

www.legends-yamaha-enduros.com

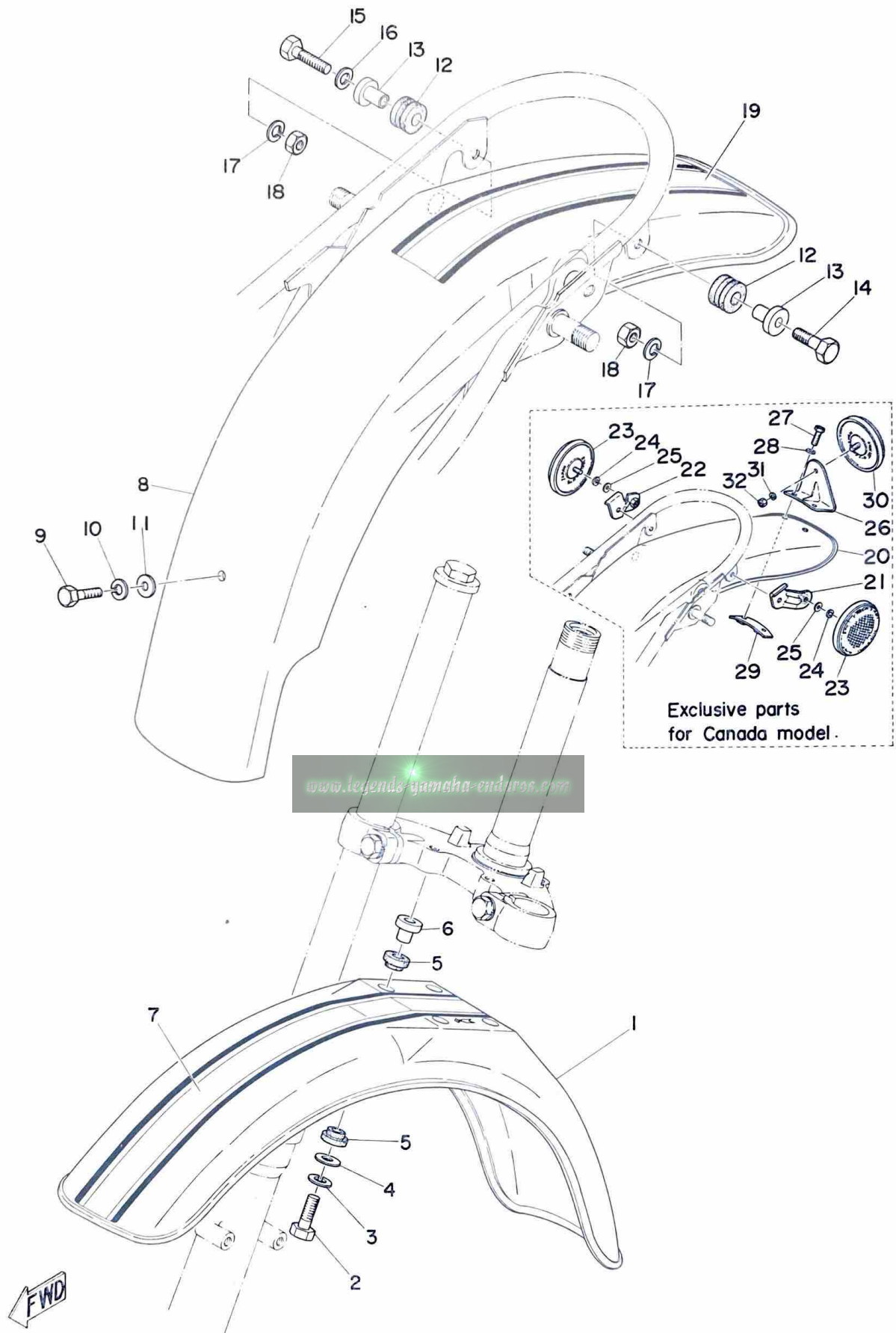
Fig. 16 STAND · FOOTREST · BRAKE PEDAL



STAND · FOOTREST · BRAKE PEDAL

Ref. No.	Parts No.	Description	Q'ty	Applicable Machine No.	Remarks
16- 1	462-27311-02-33	STAND, side	1		Yamaha Black
16- 2	109-25373-00	BOLT, tension bar	1		
16- 3	276-27316-00	SPRING	1		
16- 4	462-27451-01	FOOTREST	1		
16- 5	462-27411-00	FOOTREST, left	1		
16- 6	462-27426-01	SPRING, footrest left	1		
16- 7	462-27421-00	FOOTREST, right	1		
16- 8	462-27456-01	SPRING, footrest right	1		
16- 9	97101-08035	BOLT	2		
16-10	322-23453-00	NUT, fitting	2		
16-11	97201-08020	BOLT	2		
16-12	92901-08100	WASHER, spring	2		
16-13	462-27211-00-33	PEDAL, brake	1		Yamaha Black
16-14	90508-32218	SPRING, return	1		
16-15	462-27212-00	SHAFT, brake	1		
16-16	93430-12008	CIRCLIP (E-12)	2		
16-17	462-27231-00	ROD, brake	1		
16-18	92901-06200	WASHER, plain	2		
16-19	91401-20012	PIN, cotter	1		
16-20	180-27236-00	SPRING, rod	1		
16-21	156-27237-00	PIN, clevis	1		
16-22	206-27238-00	NUT, adjusting	1		
16-23	98801-08300	NUT	1		
16-24	462-28371-00	DAMPER, brake pedal	1		

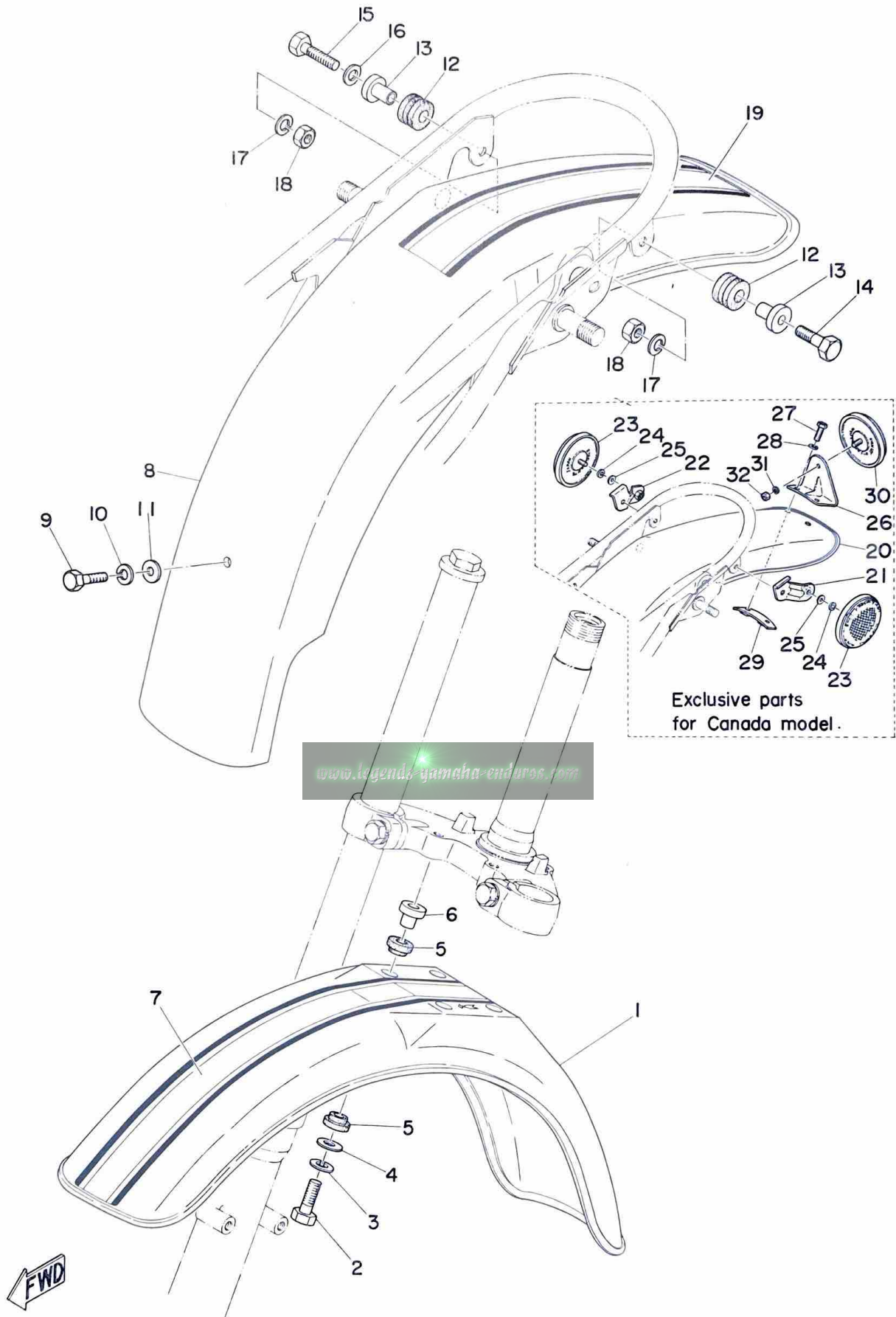
Fig. 17 FRONT FENDER · REAR FENDER



FRONT FENDER · REAR FENDER

Ref. No.	Parts No.	Description	Q'ty	Applicable Machine No.	Remarks
17- 1	462-21511-00-20	FENDER, front	1		Crystal Silver
17- 2	91201-06025	BOLT	4		
17- 3	92901-06100	WASHER, spring	4		
17- 4	116-28324-00	WASHER, leg shield 2 (6.5-20-1.6)	4		
17- 5	322-21541-00	DAMPER, fender	8		
17- 6	322-21544-00	COLLAR, fender	4		
17- 7	462-21519-00	STRIPE, front fender	2		
17- 8	462-21611-00-20	FENDER, rear	1		Crystal Silver
17- 9	91201-06018	BOLT	1		
17-10	92901-06100	WASHER, spring	1		
17-11	116-28324-00	WASHER, leg shield 2 (6.5-20-1.6)	1		
17-12	214-21717-00	DAMPER, battery box	2		
17-13	322-21544-00	COLLAR, fender	2		
17-14	91201-06025	BOLT	1		
17-15	91201-06030	BOLT	1		
17-16	92901-06200	WASHER, plain	1		
17-17	92901-06100	WASHER, spring	2		
17-18	98801-06200	NUT	2		
17-19	462-21619-00	STRIPE, rear fender	1		
EXCLUSIVE PARTS FOR CANADA MODEL.					
17-20	462-21611-10-20	FENDER, rear	1		
17-21	462-85132-00	BRACKET, reflector left	2		
17-22	462-85142-00	BRACKET, reflector, right	2		
17-23	341-85111-60	REFLECTOR	2		
17-24	92901-05100	WASHER, spring	2		
17-25	92901-05200	WASHER, plain	2		

Fig. 17 FRONT FENDER · REAR FENDER

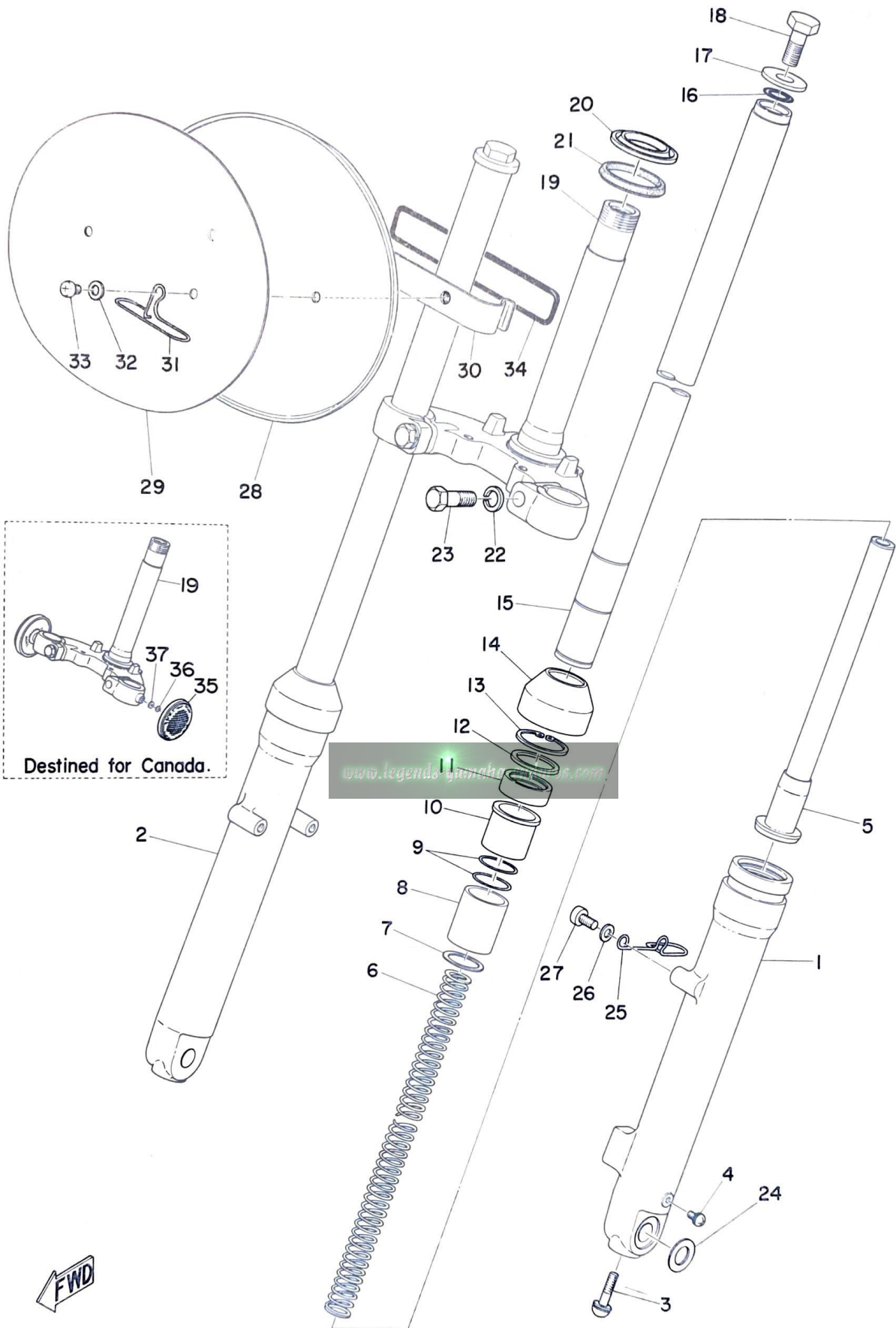


FRONT FENDER · REAR FENDER

Ref. No.	Parts No.	Description	Q'ty	Applicable Machine No.	Remarks
17-26	367-85132-00	BRACKET, reflector	1		
17-27	91201-06015	BOLT	2		
17-28	92901-06100	WASHER, spring	2		
17-29	462-85152-00	BRACKET	1		
17-30	341-85111-60	REFLECTOR	1		
17-31	92901-05100	WASHER, spring	1		
17-32	98801-05100	NUT	1		

www.legends-yamaha-enduros.com

Fig. 18 FRONT FORK



FRONT FORK

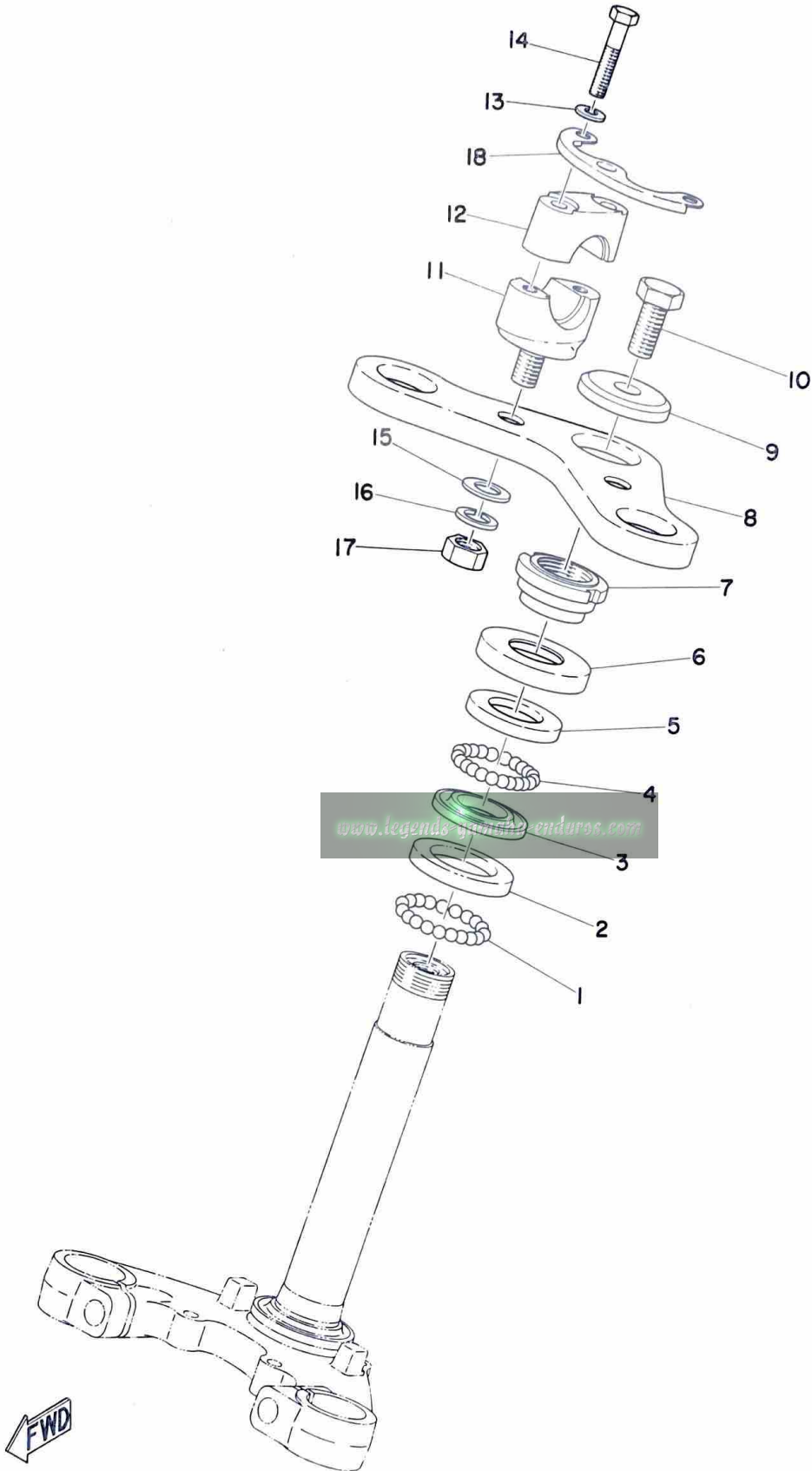
Ref. No.	Parts No.	Description	Q'ty	Applicable Machine No.	Remarks
18- 0-1	462-23102-02	FRONT FORK ASS'Y	1		
	462-23101-60	FRONT FORK ASS'Y	1		Destined for Canada
18- 1	462-23126-02	. TUBE, outer left	1		
18- 2	462-23136-02	. TUBE, outer right	1		
18- 3	451-23181-01	. . SCREW	2		
18- 4	451-23119-01	. . SCREW	2		
18- 5	462-23170-02	. CYLINDER COMP.	2		
18- 6	462-23141-02	. SPRING, fork	2		
18- 7	462-23183-02	. CIRCLIP	2		
18- 8	462-23171-02	. PISTON	2		
18- 9	462-23157-02	. RING	4		
18-10	462-23125-02	. METAL, slide	2		
18-11	462-23145-02	. OIL SEAL	2		
18-12	462-23146-02	. WASHER, oil seal	2		
18-13	462-23156-02	. CLIP, oil seal	2		
18-14	462-23144-02	. SEAL, dust	2		
18-15	462-23124-02	. TUBE, inner	2		
18-16	462-23114-02	. PACKING	2		
18-17	462-23112-02	. WASHER, cap	2		
18-18	451-23111-01	. BOLT, cap	2		
18-19	462-23340-02-33	. UNDER BRACKET COMP. ...	1		
	462-23340-60-33	. UNDER BRAK CET COMP. ...	1		Destined for Canada
18-20	156-23411-00	. . RACE, ball 1	1		
18-21	164-23462-00	. . SEAL, dust	1		
18-22	92901-10100	. WASHER, spring	2		
18-23	451-23346-01	. BOLT, under bracket	2		
18-24	462-23392-02	. WASHER, special	2		
18-25	462-23318-00	HOLDER, wire 1	1		

FRONT FORK

Ref. No.	Parts No.	Description	Q'ty	Applicable Machine No.	Remarks
18-26	92901-06200	WASHER, plain	1		
18-27	92501-06012	SCREW, panhead	1		
18-28	462-23485-00	PLATE, number	1		
18-29	462-23395-00	EMBLEM, number	1		
18-30	288-23486-00	STAY, plate	1		
18-31	462-23319-00	HOLDER, wire	1		
18-32	92901-06200	WASHER, plain	2		
18-33	92501-06010	SCREW, panhead	2		
18-34	288-23489-00	BAND	1		
18-35	341-85111-00	REFLECTOR	2		
18-36	92901-05100	WASHER, spring	2		
18-37	92901-05200	WASHER, plain	2		

www.legends-yamaha-enduros.com

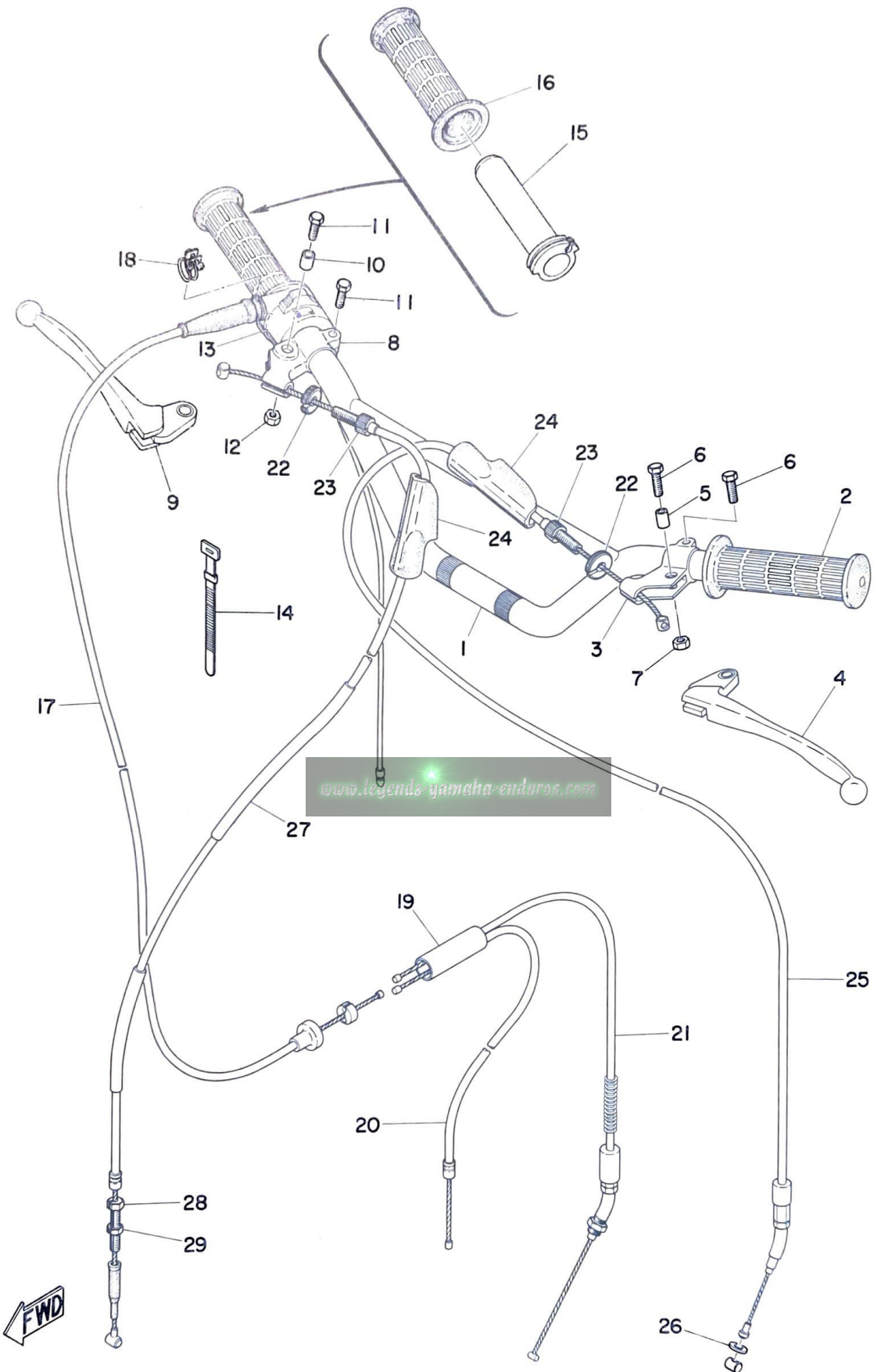
Fig. 19 STEERING



STEERING

Ref. No.	Parts No.	Description	Q'ty	Applicable Machine No.	Remarks
19- 1	93501-04011	BALL (1/4 inch)	19		
19- 2	156-23412-00	RACE, ball 2	1		
19- 3	122-23412-00	RACE, ball 2	1		
19- 4	93503-16010	BALL (3/16 inch)	22		
19- 5	122-23411-00	RACE, ball 1	1		
19- 6	122-23416-00	COVER, ball race	1		
19- 7	122-23453-00	NUT, fitting	1		
19- 8	185-23435-00-98	CROWN, handle	1		Frosting Black
19- 9	122-23443-00	WASHER, crown	1		
19-10	122-23451-00	BOLT, fitting	1		
19-11	462-23442-00-98	HOLDER, handle under	2		Frosting Black
19-12	462-23441-00-98	HOLDER, handle upper	2		Frosting Black
19-13	92901-06100	WASHER, spring	4		
19-14	91214-06035	BOLT	4		
19-15	92901-10200	WASHER, plain	2		
19-16	92901-10100	WASHER, spring	2		
19-17	92801-10100	NUT	2		
19-18	462-26131-00	GUIDE, wire	1		

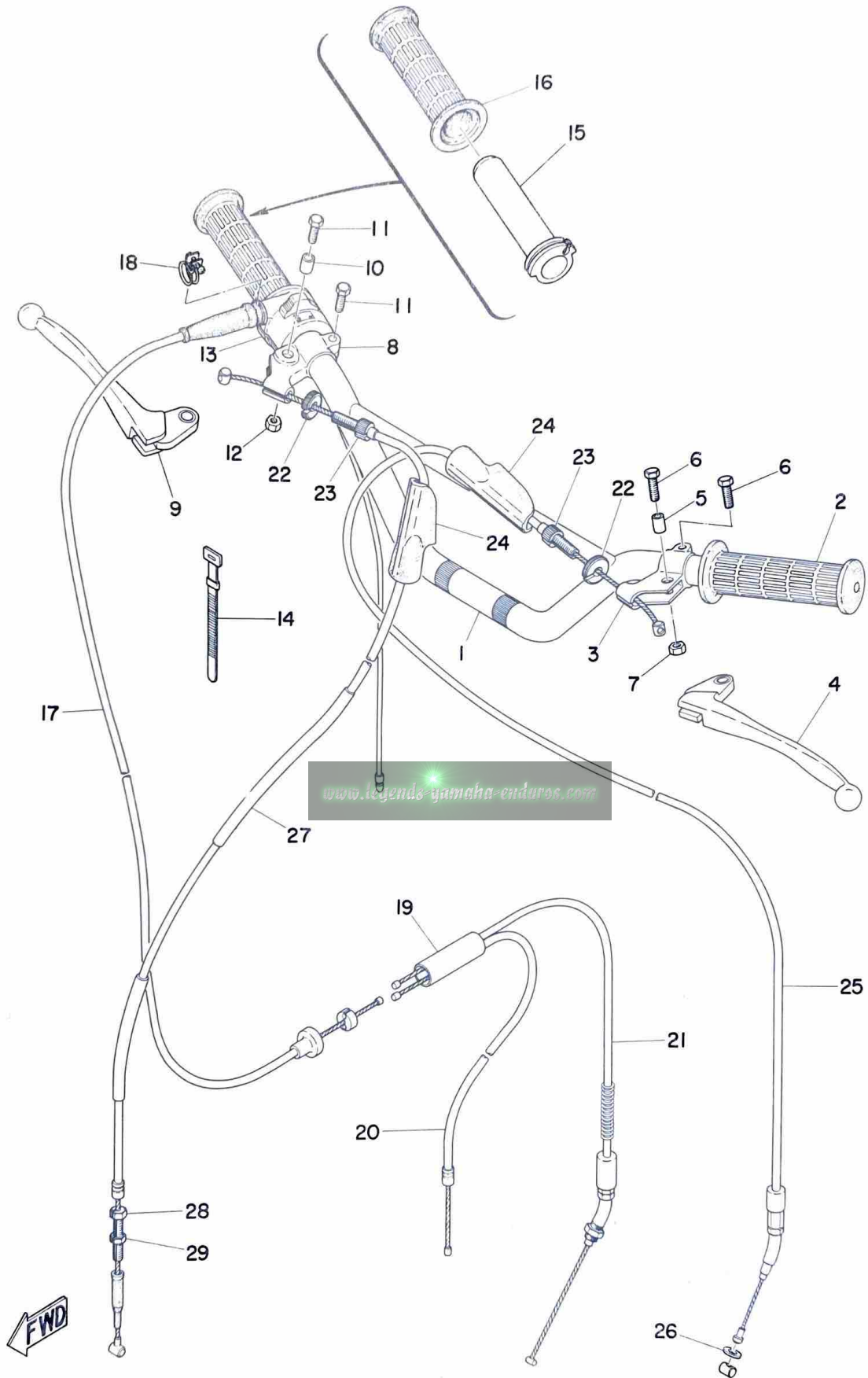
Fig. 20 HANDLE · WIRE



HANDLE · WIRE

Ref. No.	Parts No.	Description	Q'ty	Applicable Machine No.	Remarks
20- 1	462-26111-00	HANDLE	1		
20- 2	462-26241-00	GRIP, left	1		
20- 0-1	214-82910-02	LEVER HOLDER ASS'Y, left ..	1		
20- 3	214-82911-01	. HOLDER, lever left	1		
20- 4	214-83912-00	. LEVER, left	1		
20- 5	214-83913-00	. COLLAR, lever	1		
20- 6	91203-06020	. BOLT	2		
20- 7	92801-06100	. NUT	1		
20- 0-2	233-82920-02	LEVER HOLDER ASS'Y, right	1		
20- 8	233-82921-31	. HOLDER, lever right	1		
20- 9	233-83922-30	. LEVER, right	1		
20-10	214-83913-00	. COLLAR, lever	1		
20-11	91203-06020	. BOLT	2		
20-12	92801-06100	. NUT	1		
20-13	462-83976-00	SWITCH, handle l right	1		
20-14	168-83936-01	BAND, switch cord	1		
20-15	434-26243-10	TUBE, guide	1		
20-16	462-26242-00	GRIP, right	1		
20-17	462-26311-00	WIRE, throttle 1	1		
20-18	322-26393-00	HOLDER, wire guide	1		
20-19	266-26261-00	CYLINDER	1		
20-20	462-26312-00	WIRE, throttle 2	1		
20-21	462-26321-00	WIRE, pump	1		
20-22	168-26344-00	NUT, wire adjusting	2		
20-23	156-26346-00	BOLT, wire adjusting	2		
20-24	382-26372-01	COVER, lever	2		
20-25	462-26335-00	WIRE, clutch	1		

Fig. 20 HANDLE · WIRE

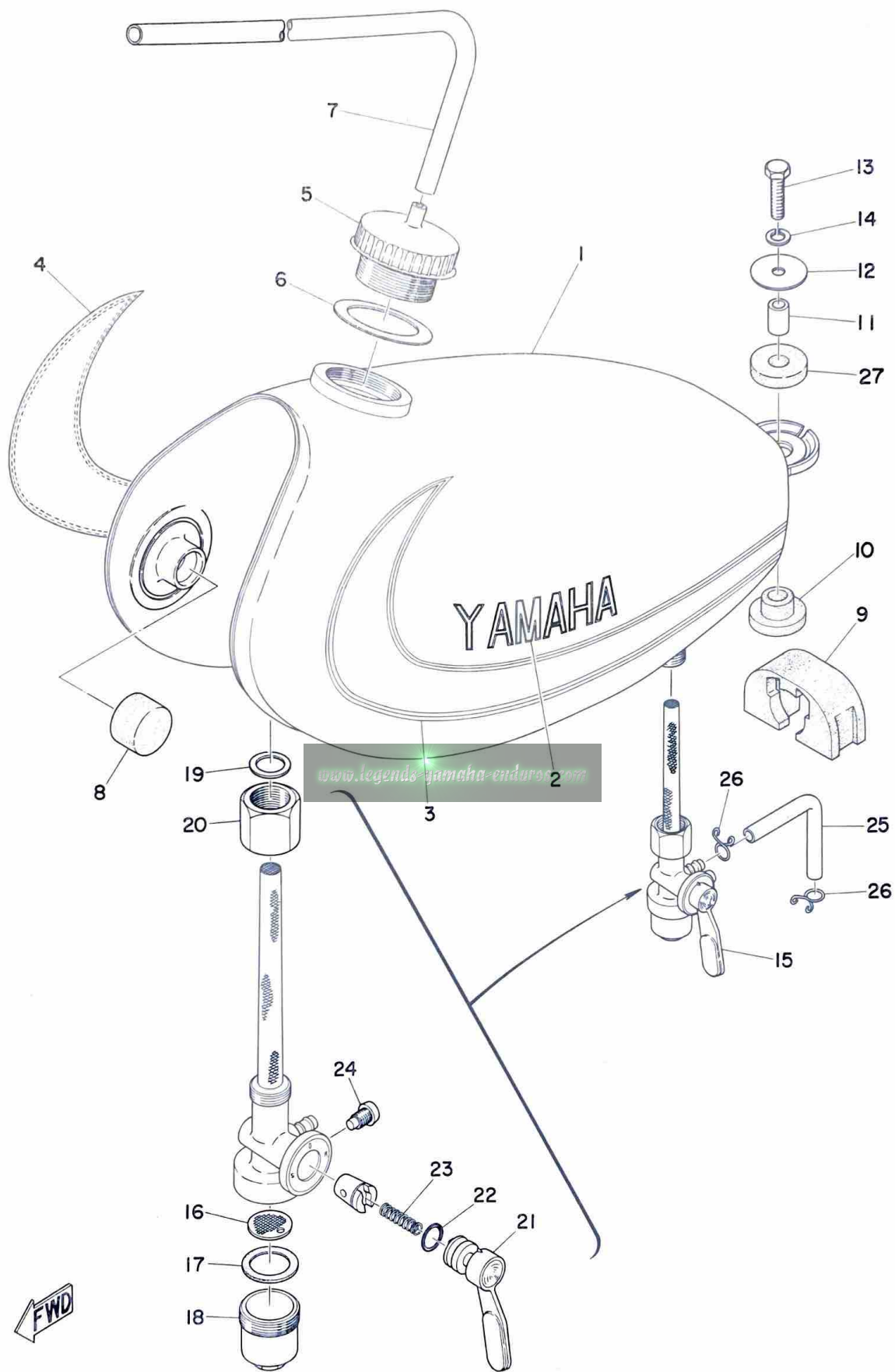


HANDLE · WIRE

Ref. No.	Parts No.	Description	Q'ty	Applicable Machine No.	Remarks
20-26	92901-06200	WASHER, plain	1		
20-27	462-26341-00	WIRE, brake	1		
20-28	109-26345-00	BOLT, wire adjusting	1		
20-29	109-26344-00	NUT, wire adjusting	1		

www.legends-yamaha-enduros.com

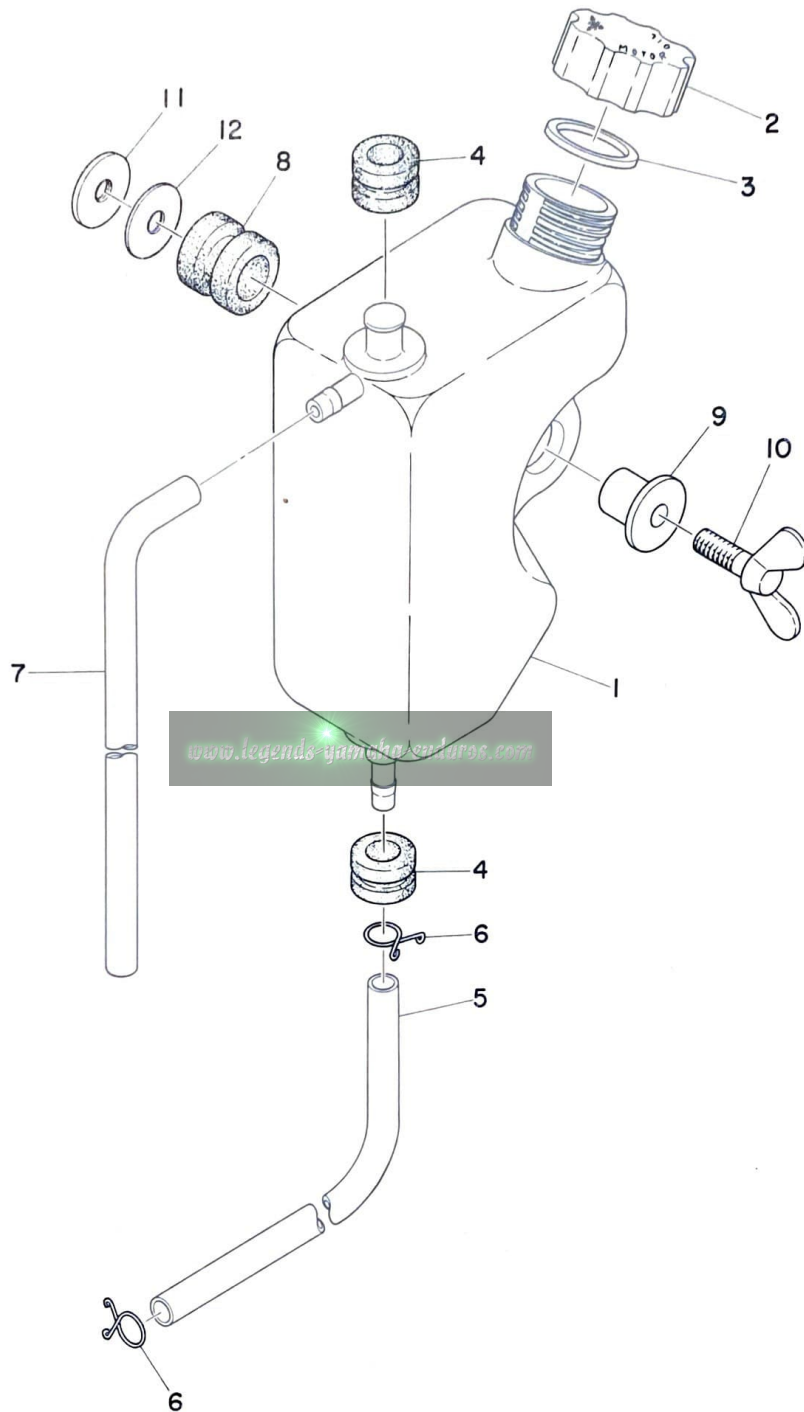
Fig. 21 FUEL TANK



FUEL TANK

Ref. No.	Parts No.	Description	Q'ty	Applicable Machine No.	Remarks
21- 1	462-24110-10-01	FUEL TANK COMP.	1		Crystal Silver
21- 2	322-24161-00	. EMBLEM, fuel tank	2		
21- 3	462-24244-10	. GRAPHIC, fuel tank left	1		
21- 4	462-24245-10	. GRAPHIC, fuel tank right ...	1		
21- 5	322-24611-00	BODY, cap	1		
21- 6	322-24612-00	PACKING, cap	1		
21- 7	613-24311-00	PIPE, fuel (5-300)	1		
21- 8	122-24181-00	DAMPER, locating l	2		
21- 9	353-24182-00	DAMPER, locating	1		
21-10	90480-14088	GROMMET	1		
21-11	214-21633-00	COLLAR, fender mount	1		
21-12	248-21757-00	WASHER, special	1		
21-13	91201-06025	BOLT	1		
21-14	92901-06100	WASHER, spring	1		
21-15	127-24500-00	FUEL COCK ASS'Y	1		
21-16	122-24515-00	. NET, filter	1		
21-17	102-24522-00	. GASKET, filter	1		
21-18	122-24521-00	. CUP, filter	1		
21-19	122-24532-00	. GASKET, nut	1		
21-20	122-24531-00	. NUT	1		
21-21	122-24524-00	. LEVER, cock	1		
21-22	122-24534-00	. SEAL, cock lever	1		
21-23	102-24529-00	. SPRING	1		
21-24	127-24535-00	. SCREW, lever fitting	1		
21-25	174-24331-00	PIPE, fuel (5-120)	1		
21-26	101-24356-00	CLIP, pipe	2		
21-27	90202-14077	WASHER, plate	1		

Fig. 22 OIL TANK

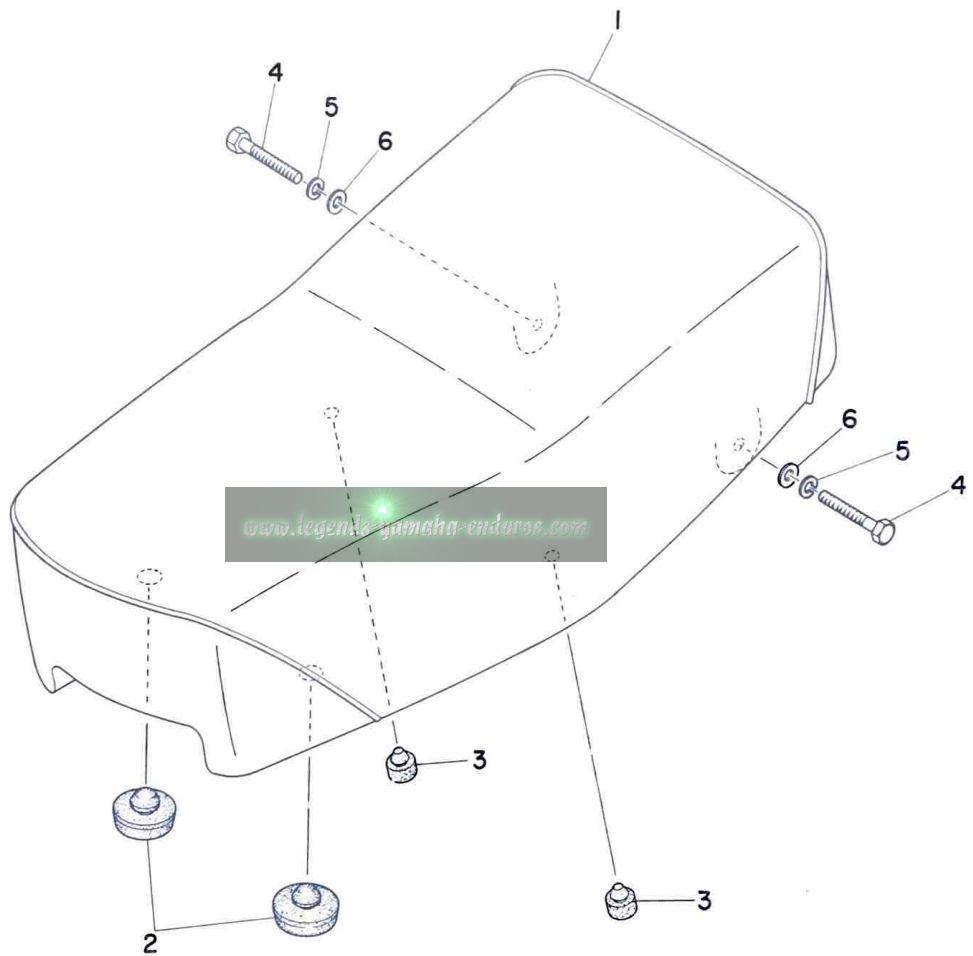


OIL TANK

Ref. No.	Parts No.	Description	Q'ty	Applicable Machine No.	Remarks
22- 1	462-21751-01	TANK, oil	1		
22- 2	434-21771-00	BODY, cap	1		
22- 3	90430-19067	GASKET, cap	1		
22- 4	90480-13018	GROMMET	2		
22- 5	367-21766-00	PIPE, oil (5-420)	1		
22- 6	101-24356-00	CLIP, pipe	2		
22- 7	622-24314-00	PIPE, fuel (5-300)	1		
22- 8	214-21717-00	DAMPER, battery box	1		
22- 9	322-21544-00	COLLER, fender	1		
22-10	90122-06001	BOLT, tank fitting	1		
22-11	90179-06013	NUT, latch clamp	1		
22-12	116-28324-00	WASHER, leg shield 2 (6.5-20-1.6)	1		

www.legends-yamaha-enduro.com

Fig. 23 SEAT

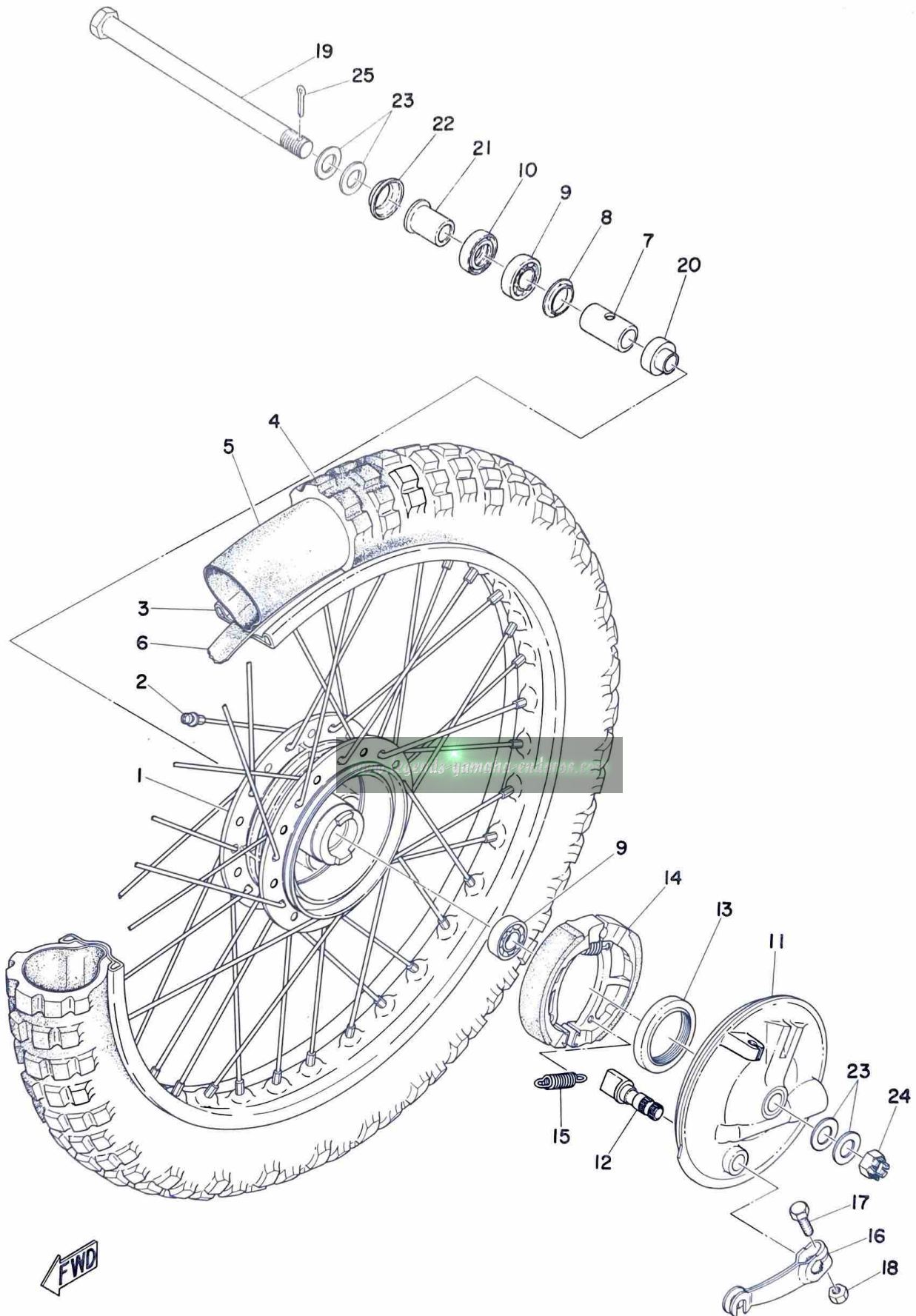


SEAT

Ref. No.	Parts No.	Description	Q'ty	Applicable Machine No.	Remarks
23- 1	462-24770-00	SEM-DOUBLE SEAT ASS'Y 1		
23- 1-1	462-24771-00	COVER, semi-double seat	... 1		
23- 2	174-24741-00	PAD, seat 2		
23- 3	137-21778-00	DAMPER, oil tank 2		
23- 4	91101-06030	BOLT 2		
23- 5	92901-06100	WASHER, spring 2		
23- 6	92901-06200	WASHER, plain 2		

www.legends-yamaha-enduros.com

Fig. 24 FRONT WHEEL

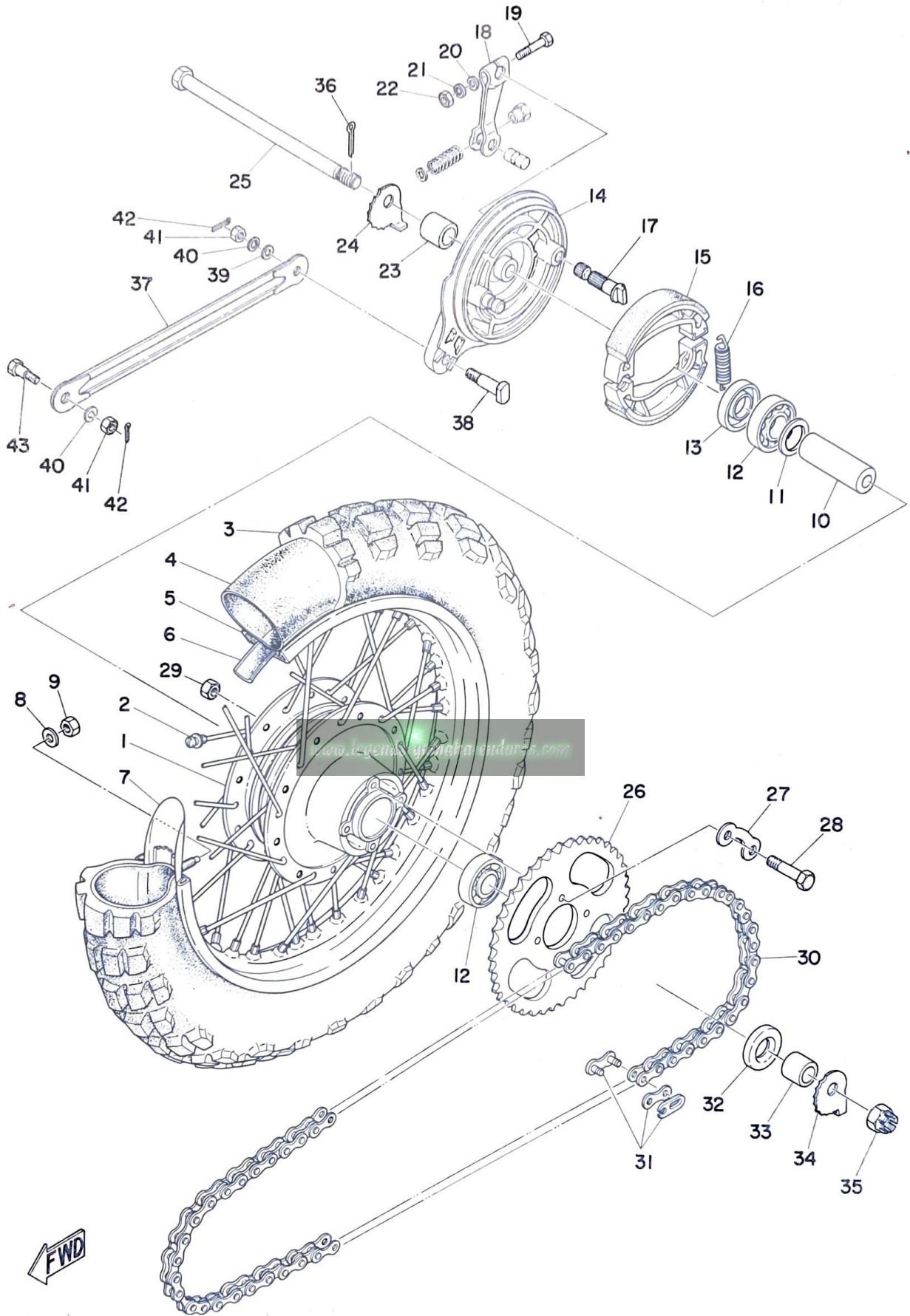


FWD

FRONT WHEEL

Ref. No.	Parts No.	Description	Q'ty	Applicable Machine No.	Remarks
24- 1	462-25111-01-98	HUB, front	1		Frosting Black
24- 2	462-25104-00	SPOKE SET	1s		
24- 3	94414-16125	RIM, front (1.40-16)	1		
24- 4	94125-16145	TIRE, front (2.75-16-4PR)	1		
24- 5	94225-16048	TUBE, front (2.75-16)	1		
24- 6	94325-16036	BAND, rim (2.75-16)	1		
24- 7	183-25117-00	SPACER, bearing	1		
24- 8	462-25115-00	FLANGE, spacer	1		
24- 9	93306-00101	BEARING (6001)	2		
24-10	93106-18013	OIL SEAL (DD-9-19-5)	1		
24-11	462-25121-00-98	PLATE, brake shoe	1		
24-12	451-25151-00	CAMSHAFT	1		
24-13	93106-40012	OIL SEAL (DD-40-50-6)	1		
24-14	451-25130-00	BRAKE SHOE COMP.	1		
24-15	451-25133-00	SPRING, return	2		
24-16	451-25155-00	LEVER, cam shaft	1		
24-17	91201-06025	BOLT	1		
24-18	98801-06100	NUT	1		
24-19	90102-12015	SHAFT, wheel	1		
24-20	90387-12365	COLLAR, wheel shaft 2	1		
24-21	90387-12265	COLLAR, wheel shaft 1	1		
24-22	462-25118-00	COVER, hub dust	1		
24-23	102-22243-00	WASHER, rear cushion (10-25-2)	4		
24-24	367-25382-00	NUT	1		
24-25	91401-30025	PIN, cotter	1		

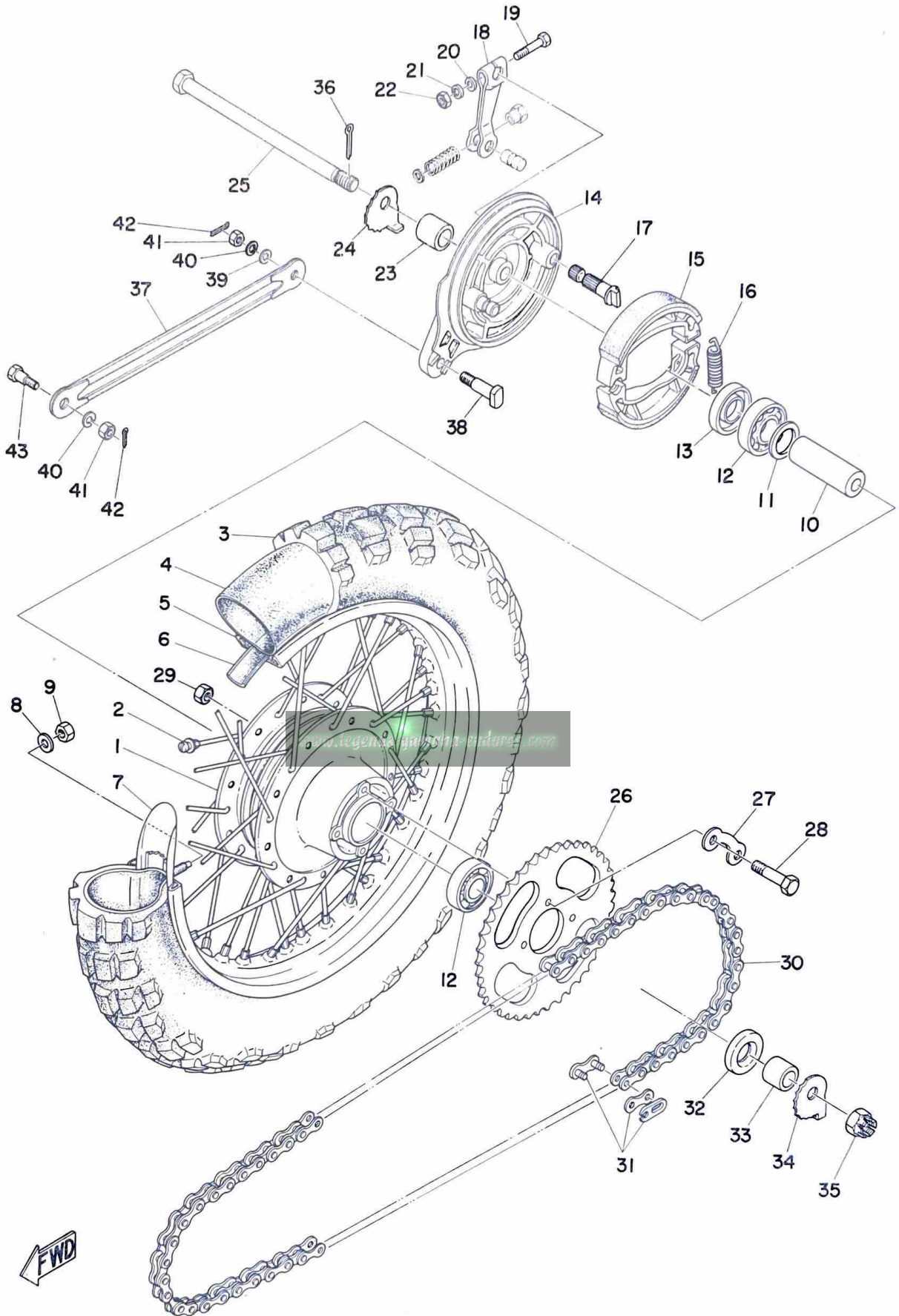
Fig. 25 REAR WHEEL



REAR WHEEL

Ref. No.	Parts No.	Description	Q'ty	Applicable Machine No.	Remarks
25- 1	462-25311-00-98	HUB, rear	1		Frosting Black
25- 2	462-25304-00	SPOKE SET	1s		
25- 3	94130-14146	TIRE, rear (3.00-14-4PR)	1		
25- 4	94230-14049	TUBE, rear (3.00-14)	1		
25- 5	94414-14122	RIM, rear (1.40-14)	1		
25- 6	94330-14037	BAND, rim (3.00-14)	1		
25- 7	462-25394-00	SPACER, bead	1		
25- 8	92901-08200	WASHER, plain	1		
25- 9	98801-08100	NUT	1		
25-10	109-25317-00	SPACER, bearing	1		
25-11	102-25315-00	FLANGE, spacer	1		
25-12	93306-30101	BEARING (6301)	2		
25-13	93106-20002	OIL SEAL (DD-20-37-8)	1		
25-14	462-25321-00-98	PLATE, brake shoe	1		
25-15	296-25330-00	BRAKE SHOE COMP.	1		
25-16	102-25333-00	SPRING, return	2		
25-17	122-25351-01	CAMSHAFT	1		
25-18	122-25355-00	LEVER, camshaft	1		
25-19	91201-06030	BOLT	1		
25-20	92901-06200	WASHER, plain	1		
25-21	92901-06100	WASHER, spring	1		
25-22	98801-06100	NUT	1		
25-23	102-25383-00	COLLAR, wheel shaft	1		
25-24	451-25389-01	PULLER, chain right	1		
25-25	367-25381-00	SHAFT, wheel	1		
25-26	288-25439-10	GEAR, sprocket wheel (39T) ...	} U. R 1		
	288-25441-10	GEAR, sprocket wheel (41T) ...			
	462-25443-00	GEAR, sprocket wheel (43T) ...			STD

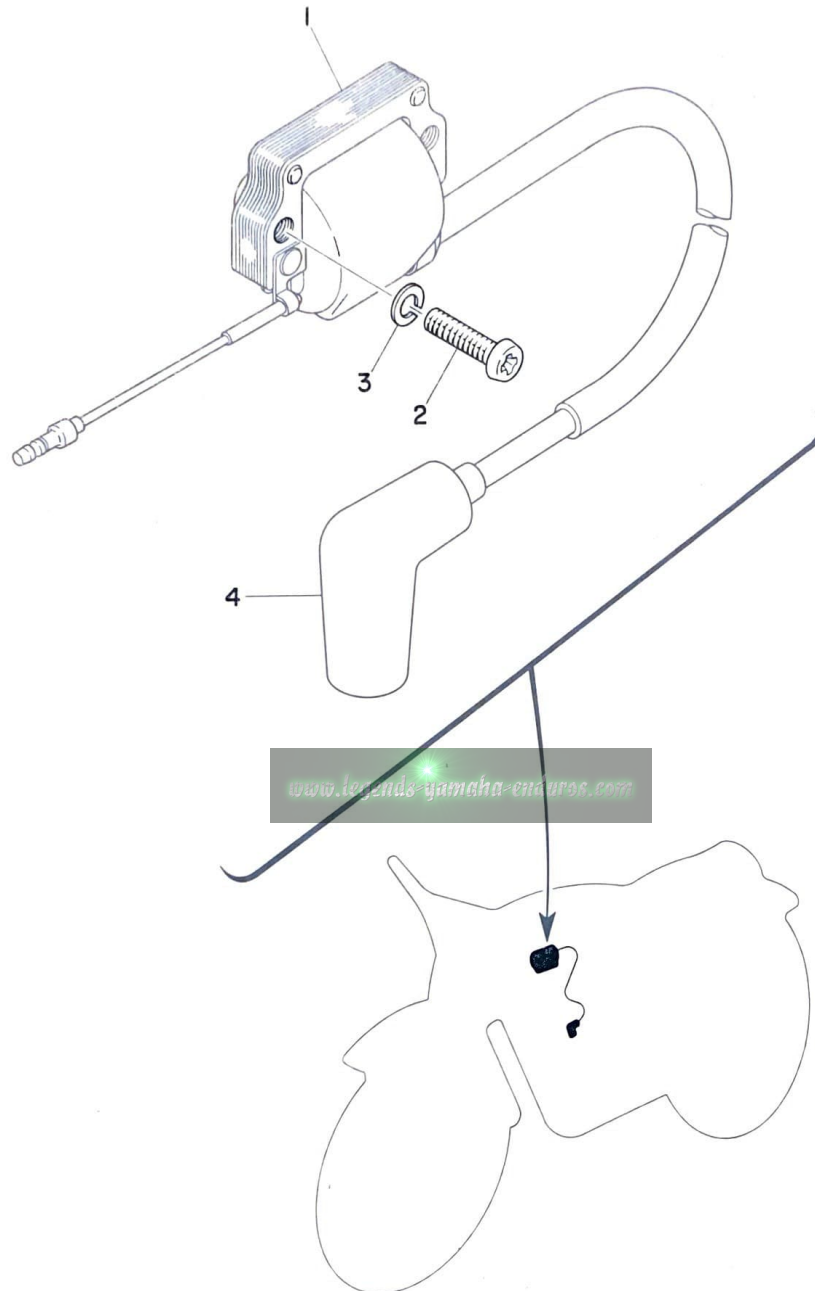
Fig. 25 REAR WHEEL



REAR WHEEL

Ref. No.	Parts No.	Description	Q'ty	Applicable Machine No.	Remarks
25-27	101-25412-00	WASHER, lock	2		
25-28	109-25411-00	BOLT, fitting	4		
25-29	98801-08300	NUT	4		
25-30	94504-20102	CHAIN (DK420-102L)	1		
25-31	94604-20001	. JOINT, chain	1		
25-32	93104-18006	OIL SEAL (SO-18-37-5)	1		
25-33	109-25377-01	COLLAR, shaft	1		
25-34	451-25388-01	PULLER, chain left	1		
25-35	367-25382-00	NUT, shaft	1		
25-36	91401-30022	PIN, cotter	1		
25-37	451-25371-00	BAR, tension	1		
25-38	109-25373-00	BOLT, tension bar	1		
25-39	92901-08200	WASHER, plain	1		
25-40	92901-08100	WASHER, spring	2		
25-41	98801-08300	NUT	2		
25-42	91401-20012	PIN, cotter	2		
25-43	183-25378-00	BOLT, tension bar	1		

Fig. 26 ELECTRICAL



ELECTRICAL

Ref. No.	Parts No.	Description	Q'ty	Applicable Machine No.	Remarks
26- 1	367-82310-40	IGNITION COIL ASS'Y	1		
26- 2	98501-06025	SCREW, panhead	2		
26- 3	92901-06100	WASHER, spring	2		
26- 4	437-82370-21	PLUG CAP ASS'Y	1		

www.legends-yamaha-enduros.com

NUMERICAL INDEX

www.legends-yamaha-enduros.com



NUMERICAL INDEX

Ref No.	Parts No.	Ref No.	Parts No.	Ref No.	Parts No.
12- 8	101-18137-00	19- 7	122-23453-00	8- 6	156-15618-01
21-26	101-24356-00	21- 8	122-24181-00	18-20	156-23411-00
22- 6	101-24356-00	21-16	122-24515-00	19- 2	156-23412-00
25-27	101-25412-00	21-18	122-24521-00	20-23	156-26346-00
5-24	102-18137-00-10	21-21	122-24524-00	16-21	156-27237-00
15- 2	102-22123-00	21-20	122-24531-00	3-15	164-16119-00
24-23	102-22243-00	21-19	122-24532-00	4-12	164-16119-00
21-17	102-24522-00	21-22	122-24534-00	18-21	164-23462-00
21-23	102-24529-00	25-17	122-25351-01	13-16	165-81145-21
25-11	102-25315-00	25-18	122-25355-00	20-22	168-26344-00
25-16	102-25333-00	12- 1	126-13116-00	20-14	168-83936-01
25-23	102-25383-00	21-15	127-24500-00	21-25	174-24311-00
25-10	109-25317-00	21-24	127-24535-00	23- 2	174-24741-00
16- 2	109-25373-00	4-15	131-16181-01	11- 7	178-14766-00
25-38	109-25373-00	4- 7	131-16321-00	16-20	180-27236-00
25-33	109-25377-01	4- 6	131-16367-00	15- 5	183-22151-00
25-28	109-25411-00	3- 9	132-11634-00	24- 7	183-25117-00
20-29	109-26344-00	11- 9	132-14613-00	25-43	183-25378-00
20-28	109-26345-00	1-14	132-15351-00	19- 8	185-23435-00-98
13-12	110-81346-20	1-15	132-15353-00	5-21	201-15653-00
13- 7	110-81347-20	8- 4	132-15616-01	16-22	206-27238-00
13- 3	110-81348-20	8- 5	132-15617-00	3-18	214-11557-01
4- 3	116-16153-00	8- 3	132-15625-01	11- 8	214-14766-00
14-10	116-28324-00	4-11	132-16333-00	7- 7	214-18178-00
17- 4	116-28324-00	4-25	132-16346-00	6-17	214-18531-00
17-11	116-28324-00	7-10	132-18113-01	6- 3	124-18561-00
22-12	116-28324-00	7- 5	132-18133-00	21-11	214-21633-00
13-11	116-81331-20	7-13	132-18137-00	17-12	214-21717-00
8-16	117-15644-00	12-11	137-13137-00-10	22- 8	214-21717-00
3- 8	122-11633-00	12-12	137-13138-01	14-14	214-21746-00
8- 2	122-15612-02	12- 4	137-13176-00	20- 0-1	214-82910-02
4- 4	122-16164-00	12-19	137-13187-00	20- 3	214-82911-01
15-12	122-22243-00	6-14	137-15353-00	20- 4	214-83912-00
19- 5	122-23411-00	5-22	137-15643-00	20- 5	214-83913-00
19- 3	122-23412-00	4-14	137-16356-00	20-10	214-83913-00
19- 6	122-23416-00	4-13	137-16377-00	15-13	220-22251-00
19- 9	122-23443-00	23- 3	137-12778-00	20- 0-2	233-82920-02
19-10	122-23451-00	3-21	146-11545-00	20- 8	233-82921-31

NUMERICAL INDEX

Ref No.	Parts No.	Ref No.	Parts No.	Ref No.	Parts No.
20- 9	233-83922-30	13- 5	296-81332-20	5- 6	353-17121-00
4-20	241-16341-01	9-14	314-13613-00	5- 5	353-17131-01
4-19	241-16343-00	9-15	314-13616-01	5- 3	353-17141-01
12-25	248-13174-00	17- 5	322-21541-00	5- 7	353-17151-00
8-13	248-15668-00	17- 6	322-21544-00	5-18	353-17211-00
3-13	248-16136-00	17-13	322-21544-00	5-15	353-17221-00
21-12	248-21757-00	22- 9	322-21544-00	5-16	353-17231-00
3- 5	257-11681-00	16-10	322-23453-00	5-17	353-17241-00
12- 2	257-13175-00	21- 2	322-24161-00	5-13	353-17251-00
12- 6	257-13177-00	21- 5	322-24611-00	5- 1	353-17410-01
5- 8	257-15389-00	21- 6	322-24612-00	5- 2	353-17411-01
4- 8	257-16324-00	20-18	322-26393-00	5-12	353-17421-01
4-26	257-16345-00	18-35	341-85111-00	5-10	353-17471-00
5-19	257-17219-00	17-23	341-85111-60	7- 8	353-18101-00
5- 4	257-17414-00	17-30	341-85111-60	7- 9	353-18111-00-93
5-14	257-17414-00	3-22	353-11546-00	7- 1	353-18120-00
5-29	257-17461-30	3- 3	353-11651-00	7- 3	353-18124-00
5-29	257-17461-40	12-16	353-13128-00	6-10	353-18141-01
5-29	257-17461-50	12- 7	353-13178-00	7- 2	353-18197-00
5-28	257-17462-00	9-13	353-13610-00	6- 5	353-18511-01
5-31	257-17463-00	9-12	353-13621-00	6-18	353-18512-01
5-30	257-17464-00	9-10	353-14455-00	6-19	353-18513-01
20-19	266-26261-00	2-15	353-15362-00	6- 1	353-18541-01
16- 3	276-27316-00	2- 1	353-15411-00-98	6- 8	353-18562-00
6-16	278-18547-02	2- 2	353-15415-00-98	21- 9	353-24182-00
9-21	278-13552-01	2- 9	353-15437-02	1- 8	367-11351-00
10-25	288-14124-00	2- 7	353-15451-00	3- 0-1	367-11400-00
10-19	288-14137-00	8-18	353-15641-00	3- 1	367-11412-00
10-24	288-14161-00	5-23	353-15651-00	3- 2	367-11422-00
15- 3	288-22141-00	8-17	353-15687-00	3-10	367-11610-00
18-30	228-23486-00	3-14	353-16111-01	3-10	367-11610-10
18-34	288-23489-00	3-16	353-16144-00	3-10	367-11610-20
25-26	288-25439-10	4- 1	353-16150-01	3- 0-2	367-11630-00
25-26	288-25441-10	4- 0-1	353-16301-00	3- 0-2	367-11630-10
25-15	296-25330-00	4- 9	353-16351-00	3- 0-2	367-11630-20
13- 2	296-81312-21	4-17	353-16357-00	3- 7	367-11630-00-96
13- 6	296-81321-21	4- 5	353-16371-00	3- 7	367-11631-00-98
13-10	296-81325-20	4-21	353-16396-00	3- 7	367-11635-00

NUMERICAL INDEX

Ref No.	Parts No.	Ref No.	Parts No.	Ref No.	Parts No.
3- 7	367-11636-00	1-16	367-18588-00	10- 3	462-14343-43
2-17	367-13174-00	22- 5	367-21766-00	10- 3	462-14343-44
9-11	367-13565-00-98	25-25	367-25381-00	10- 3	462-14343-45
10-12	367-14125-00	24-24	367-25382-00	9- 1	462-14411-01
10-22	367-14126-00	25-35	367-25382-00	9- 7	462-14453-00
10-20	367-14136-00	13- 0-1	367-81300-21	11- 1	462-14610-33
10-23	367-14168-00-33	13-14	367-81315-20	11- 5	462-14718-31
10-26	367-14169-00	13- 1	367-81350-20	11-13	462-14791-00
10- 5	367-14195-00	13-15	367-81328-20	2-13	462-15416-01-98
10-14	367-14211-00	26- 1	367-82310-40	2- 6	462-15421-01-98
10-17	367-14312-10	17-26	367-85132-00	1-19	462-15485-00
10-17	367-14312-15	20-24	382-26372-01	8- 0-1	462-15610-00-93
10-17	367-14312-20	12-22	402-13552-00	8- 1	462-15611-00
10-16	367-14323-00	22- 2	434-21771-00	8- 8	462-15660-00
10-21	367-14331-00	20-15	434-26243-10	8-14	462-15666-00
10-28	367-14335-00	26- 4	437-82370-21	8-11	462-15676-00
10-15	367-14337-00	1-10	451-11181-00	5-19	462-17219-00
10- 1	367-14342-16	11- 2	451-14752-30	14- 1	462-21110-01-33
10- 1	367-14342-17	4-24	451-16342-00	17- 1	462-21511-00-20
10- 1	367-14342-18	18-18	451-23111-01	17- 7	462-21519-00
10-27	367-14371-00	18-14	451-23119-01	17- 8	462-21611-00-20
10-32	367-14373-00	18- 3	451-23181-01	17-20	462-21611-10-20
10-31	367-14374-00	18-23	451-23346-01	17-19	462-21619-00
10-29	367-14375-00	24-14	451-25130-00	14- 8	462-21711-00-01
10-30	367-14377-00	24-15	451-25133-00	14-13	462-21721-00-01
10- 9	367-14381-00-33	24-12	451-25151-00	22- 1	462-21751-01
10- 8	367-14384-00	24-16	451-25155-00	15- 6	462-22153-00-33
10- 6	367-14385-00	25-37	451-25371-00	15- 1	462-22110-00-33
10- 7	367-14386-00	25-34	451-25388-01	15-11	462-22210-22
10- 4	367-14390-14	25-24	451-25389-01	18- 0-1	462-23101-02
10-33	367-14396-00	1-11	462-11111-00-R4	18- 0-1	462-23101-60
9- 3	367-14412-00	1- 9	462-11311-00-R4	18-17	462-23112-02
9- 2	367-14451-00	12- 0-1	462-13101-00	18-16	462-23114-02
9- 6	367-14455-01	10- 0-1	462-14301-60	18-15	462-23124-02
1- 1	367-15111-01-98	10-18	462-14336-00	18-10	462-23125-02
1- 2	367-15121-02-98	10- 2	462-14341-00	18- 1	462-23126-02
9-20	367-15378-00	10- 3	462-14343-41	18- 2	462-23136-02
1-17	367-18568-00	10- 3	462-14343-42	18- 6	462-23141-02

NUMERICAL INDEX

Ref No.	Parts No.	Ref No.	Parts No.	Ref No.	Parts No.
18-14	462-23144-02	20-21	462-26321-00	21-10	90480-14088
18-11	462-23145-02	20-25	462-26335-00	12-21	90501-02217
18-12	462-23146-02	20-27	462-26341-00	6-15	90501-09292
18-13	462-23156-02	16-13	462-27211-00-33	8-12	90508-26196
18- 9	462-23157-02	16-15	462-27212-00	16-14	90508-32218
18- 5	462-23170-02	16-17	462-27231-00	15- 7	91101-06015
18- 8	462-23171-02	16- 1	462-27311-02-33	7-11	91101-06020
18- 7	462-23183-02	16- 5	462-27411-00	8- 7	91101-06025
18-25	462-23318-00	16- 7	462-27421-00	23- 4	91101-06030
18-31	462-23319-00	16- 6	462-27426-01	14-15	91201-06012
18-19	462-23340-02-33	16- 4	462-27451-01	14-11	91201-06015
18-19	462-23340-60-33	16- 8	462-27456-01	17-27	91201-06015
18-24	462-23392-02	16-24	462-28371-00	11-14	91201-06018
18-29	462-23395-00	20-13	462-83976-00	14-18	91201-06018
19-12	462-23441-00-98	17-21	462-85132-00	17- 9	91201-06018
19-11	462-23442-00-98	17-22	462-85142-00	17- 2	91201-06025
18-28	462-23485-00	17-29	462-85152-00	17-14	91201-06025
21- 1	462-24110-10-01	21- 7	613-24311-00	21-13	91201-06025
21- 3	462-24244-10	22- 7	622-24314-00	24-17	91201-06025
21- 4	462-24245-10	10-13	646-14212-00	17-15	91201-06030
23- 1	462-24770-00	14- 4	90101-08219	25-19	91201-06030
23- 1-1	462-24771-00	24-19	90102-12015	20- 6	91203 06020
24- 2	462-25104-00	6-13	90109-14223	20-11	91203-06020
24- 1	462-25111-01-98	1- 7	90116-06139	19-14	91214-06035
24- 8	462-25115-00	4-10	90119-05001	12-17	91401-12018
24-22	462-25118-00	22-10	90122-06001	16-19	91401-20012
24-11	462-25121-00-98	1-12	90179-06005	25-42	91401-20012
25- 2	462-25304-00	22-11	90179-06013	6- 7	91401-25017
25- 1	462-25311-00-98	14- 7	90185-08039	25-36	91401-30022
25-14	462-25321-00-98	21-27	90202-14077	24-25	91401-30025
25- 7	462-25394-00	14- 6	90209-08050	1-18	91810-02014
25-26	462-25443-00	24-21	90387-12265	2- 8	91810-02014
20- 1	462-26111-00	24-20	90387-12365	1- 3	91810-05016
19-18	462-26131-00	22- 3	90430-19067	11- 6	91903-06010
20- 2	462-26241-00	12-24	90445-05029	9- 4	92501-06010
20-16	462-26242-00	12-23	90468-02033	11- 3	92501-06010
20-17	462-26311-00	14- 9	90480-12053	18-33	92501-06010
20-20	462-26312-00	22- 4	90480-13018	5-11	92501-06012

NUMERICAL INDEX

Ref No.	Parts No.	Ref No.	Parts No.	Ref No.	Parts No.
18-27	92501-06012	17-10	92901-06100	24-13	93106-40012
4-23	92501-06015	17-17	92901-06100	24-10	93106-18013
9-18	92501-06020	17-28	92901-06100	25-13	93106-20002
1- 6	92501-06025	19-13	92901-06100	8- 9	93109-15001
1- 4	92501-06050	21-14	92901-06100	2-16	93210-21190
2- 3	92506-06020	23- 5	92901-06100	4- 2	93210-98202
2-12	92506-06020	25-21	92901-06100	24- 9	93306-00101
2-14	92506-06025	26- 3	92901-06100	5- 9	93306-20303
2- 5	92506-06030	9- 5	92901-06200	3-11	93306-20412
2-11	92506-06030	11-16	92901-06200	25-12	93306-30101
2-10	92506-06040	14-17	92901-06200	5-26	93306-30305
2- 4	92506-06045	15- 8	92901-06200	3- 6	93310-11268
6- 9	92701-06012	16-18	92901-06200	3- 4	93310-41809
20- 7	92801-06100	17-16	92901-06200	5-25	93410-12003
20-12	92801-06100	18-26	92901-06200	5-20	93410-13004
19-17	92801-10100	18-32	92901-06200	8-10	93410-15005
15- 4	92801-10200	20-26	92901-06200	8-15	93410-25017
9-17	92901-03100	23- 6	92901-06200	12- 9	93430-08006
10-10	92901-04100	25-20	92901-06200	6-20	93430-10016
13- 4	92901-04100	11-11	92901-08100	7- 4	93430-10016
13- 8	92901-04100	14- 5	92901-08100	7-14	93430-10016
13-13	92901-04100	16-12	92901-08100	16-16	93430-12008
13-17	92901-04100	25-40	92901-08100	6-12	93440-12026
13- 9	92901-04200	11-12	92901-08200	19- 1	93501-04011
12-14	92901-05100	25- 8	92901-08200	4-16	93503-16003
17-24	92901-05100	25-39	92901-08200	19- 4	93503-16010
17-31	92901-05100	18-22	92901-10100	12-20	93505-32002
18-36	92901-05100	19-16	92901-10100	12- 3	93603-22028
17-25	92901-05200	19-15	92901-10200	6-11	93604-08071
18-37	92901-05200	3-19	92901-12100	6- 2	93604-10011
9- 9	92901-06100	12- 5	93101-10001	6- 6	93606-14081
9-19	92901-06100	12-15	93101-10001	24- 4	94125-16145
11- 4	92901-06100	7-12	93101-12004	25- 3	94130-14146
11-15	92901-06100	3-17	93102-20009	24- 5	94225-16048
14-12	92901-06100	5-27	93102-25017	25- 4	94230-14049
14-16	92901-06100	3-12	93103-28011	24- 6	94325-16036
15- 9	92901-06100	4-22	93104-11028	25- 6	94330-14037
17- 3	92901-06100	25-32	93104-18006	25- 5	94414-14122

NUMERICAL INDEX

Ref No.	Parts No.	Ref No.	Parts No.	Ref No.	Parts No.
24- 3	94414-16125				
25-30	94504-20102				
25-31	94604-20001				
1-13	94701-00040				
1- 5	95201-06055				
16- 9	97101-08035				
14- 2	97101-08090				
14- 3	97101-08120				
11-10	97201-08020				
16-11	97201-08020				
10-11	98501-04010				
12-10	98501-05015				
26- 2	98501-06025				
9-16	98512-03007				
6- 4	98701-05012				
13-18	98701-05015				
17-32	98801-05100				
12-13	98801-05200				
9- 8	98801-06100				
24-18	98801-06100				
25-22	98801-06100				
15-10	98801-06200				
17-18	98801-06200				
4-18	98801-06300				
25- 9	98801-08100				
7- 6	98801-08200				
16-23	98801-08300				
25-29	98801-08300				
25-41	98801-08300				
3-20	98801-12200				
12-18	98901-04008				

www.legends-yamaha-enduros.com

www.legends-yamaha-enduros.com



YAMAHA MOTOR CO., LTD.

PRINTED IN JAPAN

First edition Oct., 1973

(LIT-10014-62-00) (462-28198-60)