

YAMAHA

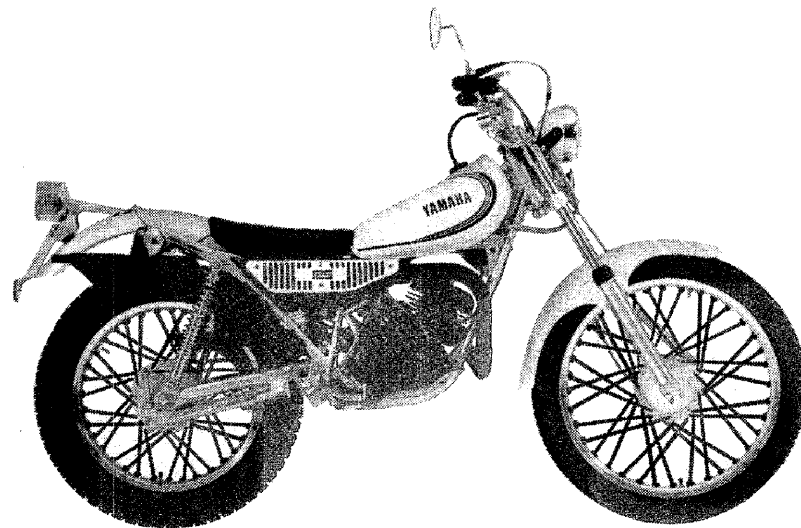
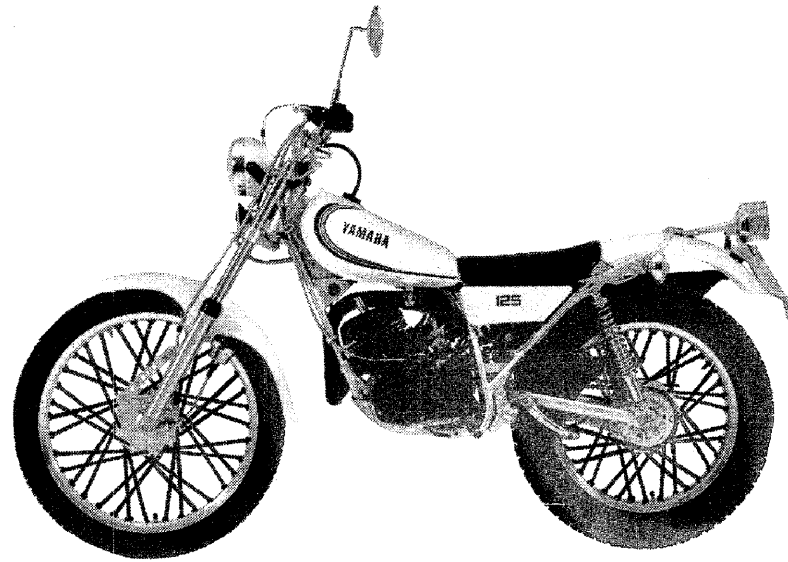
PARTS CATALOGUE

TY125'80 (1K6)

W.GERMANY

101K6 - 332E1

A2



A3

FOREWORD

This Parts Catalogue is related to the parts in use for the Yamaha TY 125 '80 (1K6).
When you are ordering replacement parts for the TY 125 '80 (1K6), refer to this Parts Catalogue and quote both part numbers and part names correctly.

1. Modifications or additions which have been made after issue of the Parts Catalogue will be announced in the Yamaha Parts News.
It is advisable that according to the Yamaha Parts News you make necessary corrections to the Parts Catalogue on hand to keep it up-to-date.

2. Abbreviations

The following abbreviations are used in this Parts Catalogue.

- U.R. Use size (thickness) and/or number as required.
- U.N. Use as many as you need.
- A.P. Alternate Parts
- L.M. Local Made
- F# Frame No. (Applicable machine No.)

3. The parts marked with (*) in the parts number column of this Catalogue are not supplied with by Yamaha, those have to be found locally.
4. Parts, which are to be supplied in the form of assemblies, are listed with an indentation of one letter's space, and a dot (.) is put against the name of each part.

EXAMPLE
 CARBURETOR ASS'Y
 . JET, pilot
 . NOZZLE, main

5. Indication of No. of constituent parts for assembly

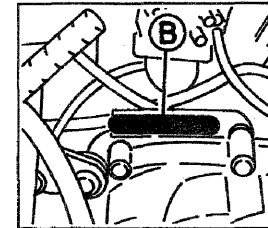
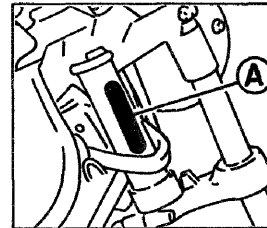
The numeral appearing to the right of each constituent part under the description indicates the quantity of such parts for each individual assembly unit.

EXAMPLE

Part No.	Description	Q'ty	Remarks
2F5-83310-60	FRONT FLASHER LIGHT ASS'Y	2	
115-83311-60	. BULB (6V-18W)	1	
1M1-83309-60	. REFLECTOR	1	

6. Initial Serial No. and Color Code

(A) Frame Serial No.	1K6-070101 and following
(B) Engine Serial No.	1K6-070101 and following



Color Code	Color Name	Abbreviate
36	Clean White	W

7. Applicable colors of graphics are represented in the "Remarks" column by the letter(s) appropriately picked out of the full word(s) showing such colors.

EXAMPLE

Part No.	Description	Q'ty	Remarks
2N4-24110-00-X5	FUEL TANK COMP.	1	MAXIM RED
3J1-24240-10	. GRAPHIC, fuel tank set	1	for MXR

CONTENTS

ENGINE

Cylinder	B2
Crankshaft · Piston	B3 ~ B4
Flywheel Magneto	B5
Oil Pump	B6
Intake	B7
Carburetor	B8 ~ B9
Exhaust	B10
Crankcase	B11
Crankcase Cover	B12
Kick Startor	B13
Clutch	B14
Transmission	B15 ~ C2
Shift Cam · Fork	C3
Shift Shaft · Pedal	C4

CHASSIS

Frame · Tool	C5
Front Fender · Rear Fender	C6
Side Cover	C7
Oil Tank	C8
Rear Arm · Suspension	C9
Steering	C10
Front Fork	C11 ~ C12
Fuel Tank	C13
Seat	C14
Front Wheel	C15 ~ D2
Rear Wheel	D3 ~ D4
Handlebar · Cable	D5 ~ D6
Stand · Footrest	D7 ~ D8

Flasher Light	D9
Speedometer	D10
Headlight	D11
Taillight	D12
Electrical 1	D13 ~ D14
Handle Switch · Lever	D15

ALTERNATE PARTS

Alternate (Engine)	E2
Alternate (Electrical)	E3

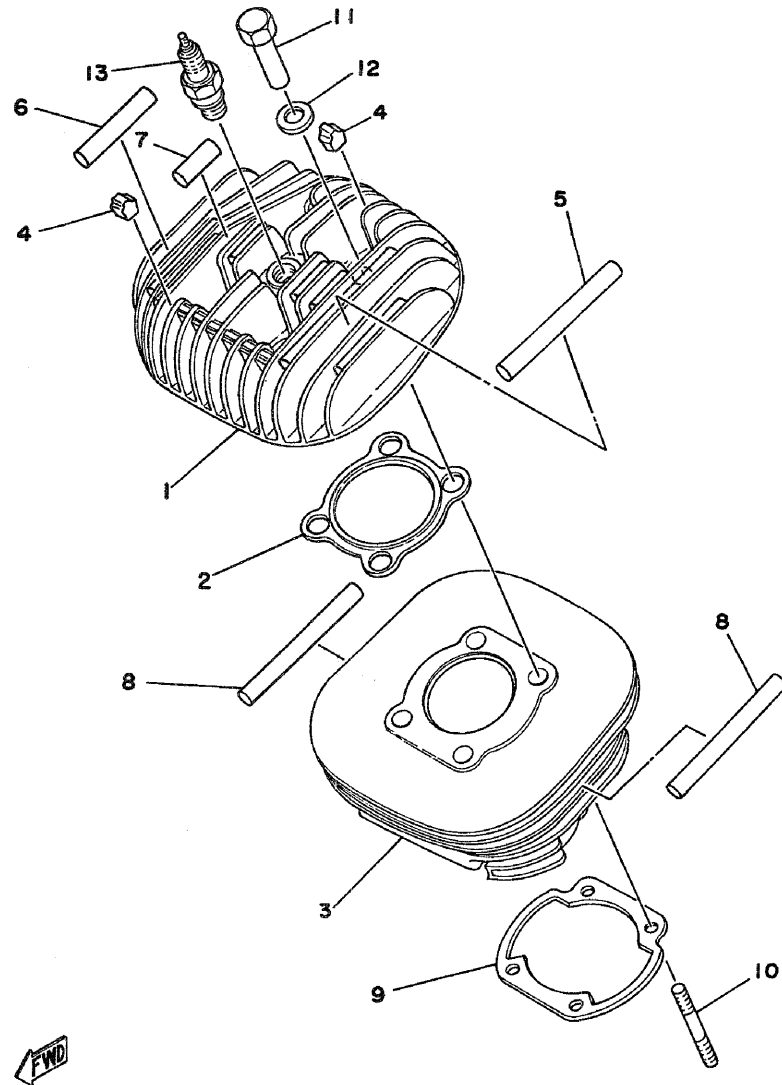
REPAIR KIT

Repair Kit	E4 ~ E6
------------------	---------

INDEX

Numerical Index	M1 ~ M3
Parts Name Index	M10 ~ M16

FIG. 1 CYLINDER

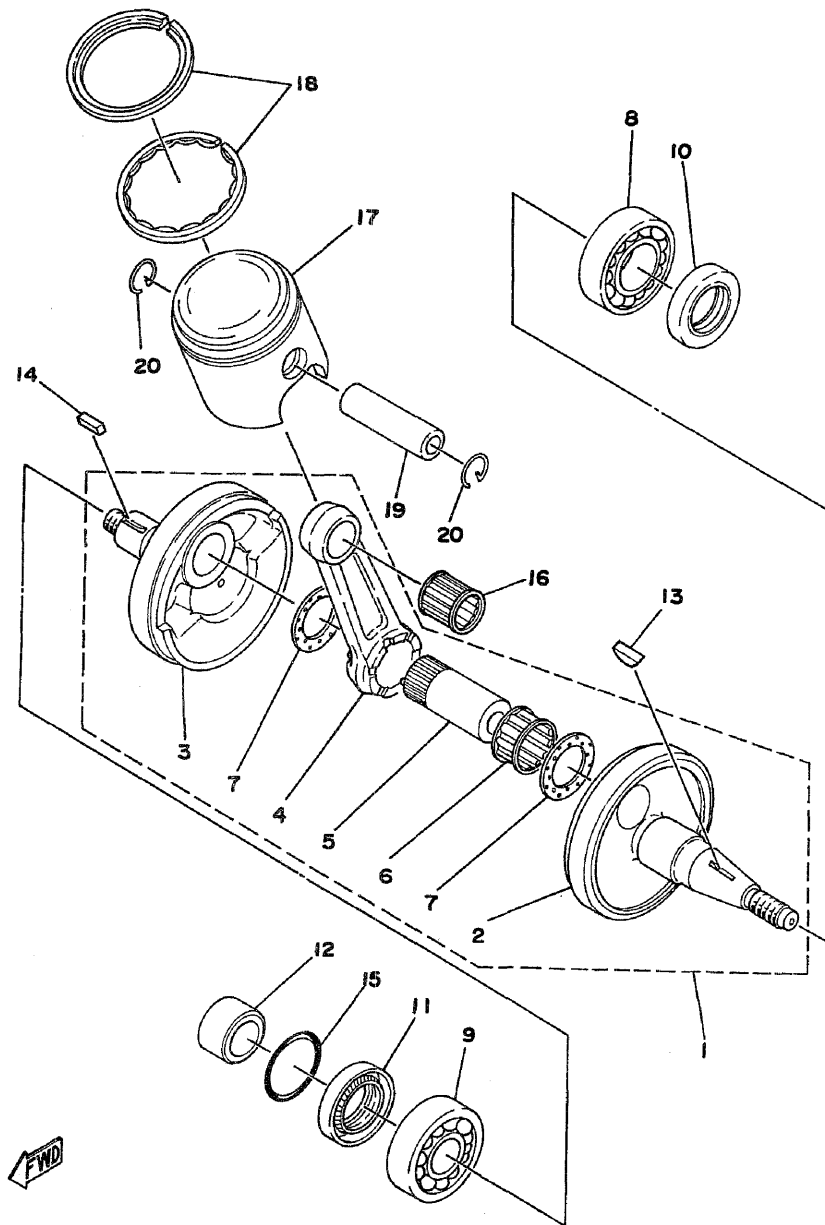


REF. NO.	PART NO.	DESCRIPTION	Q'TY	REMARKS
1	539-11111-00	HEAD, cylinder 1	1	
2	248-11181-00	GASKET, cylinder head 1	1	
3	539-11311-00	CYLINDER 1	1	
4	434-11161-00	ABSORBER 1	12	
5	1K6-11162-00	ABSORBER 2	2	
6	1K6-11127-00	ABSORBER 3	4	
7	576-11127-00	ABSORBER 3	4	
8	1K6-11161-00	ABSORBER 1	4	
9	248-11351-00	GASKET, cylinder	1	
10	90116-08064	BOLT, stud	4	
11	90179-08025	NUT	4	
12	90201-12362	WASHER, Plate	4	
13	94701-00044	PLUG, sPark (NGK B-7ES)	1	



B2

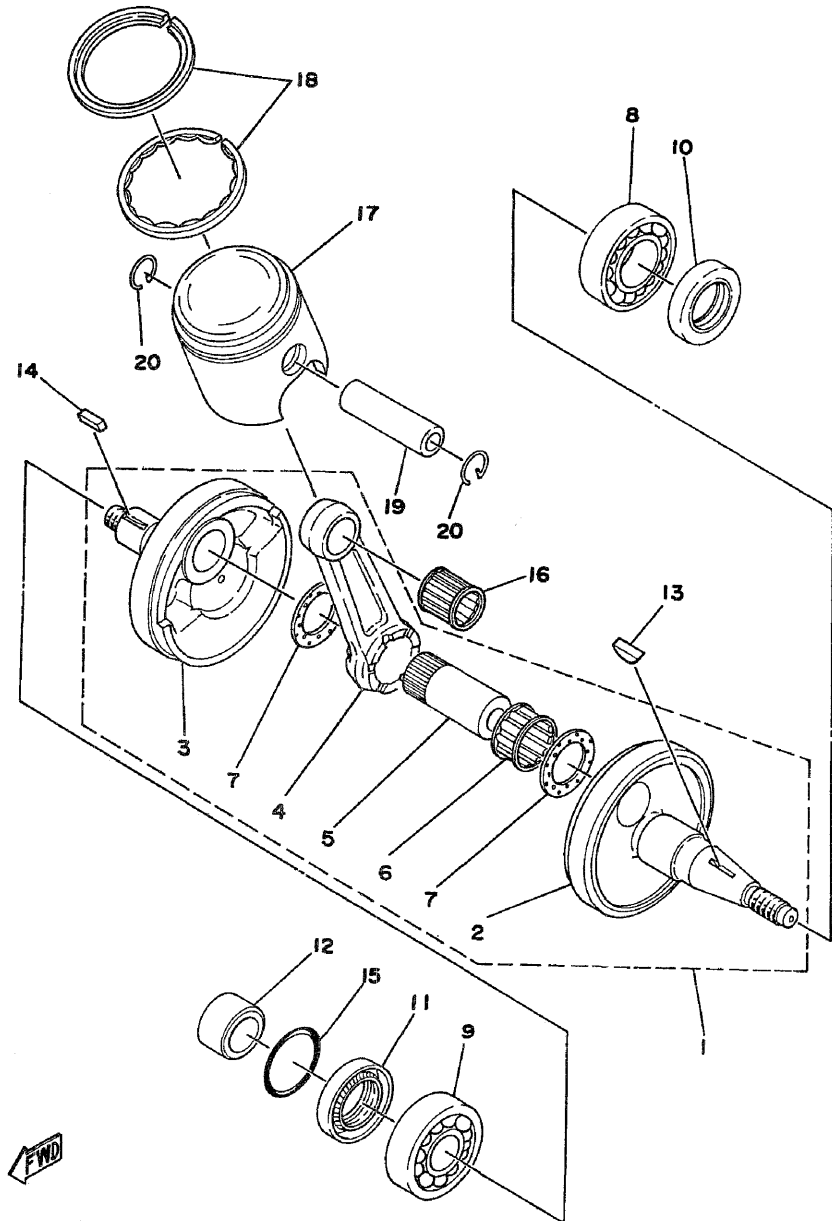
FIG. 2 CRANKSHAFT-PISTON



REF. NO.	PART NO.	DESCRIPTION	Q'TY	REMARKS
1	525-11400-01	CRANKSHAFT ASSY	1	
2	525-11412-00	•CRANK 1	1	
3	525-11422-00	•CRANK 2	1	
4	248-11651-01	•ROD, connecting	1	
5	525-11681-01	•PIN, crank 1	1	
6	93310-42231	•BEARING, cylindrical	1	
7	90209-22071	•WASHER	2	
8	93306-20517	BEARING (B6205)	1	
9	93306-30405	BEARING (B6304C3)	1	
10	93102-25061	OIL SEAL	1	
11	93103-28011	OIL SEAL	1	
12	90387-20488	COLLAR	1	
13	90280-05013	KEY, woodruff	1	
14	90282-05005	KEY, straight	1	
15	93210-18023	O-RING	1	
16	93310-216A3	BEARING, cylindrical	1	
17	444-11631-00-97	PISTON (STD)	1	UR
	444-11631-00-98	PISTON (STD)	1	UR
	444-11635-00	PISTON (1ST O/S 0.25MM)	1	AP
	444-11636-00	PISTON (2ND O/S 0.50MM)	1	AP
	444-11637-00	PISTON (3RD O/S 0.75MM)	1	AP
	444-11638-00	PISTON (4TH O/S 1.00MM)	1	AP
18	444-11610-00	PISTON RING SET (STD)	1	
	444-11610-10	PISTON RING SET (1ST O/S)	1	AP
	444-11610-20	PISTON RING SET (2ND O/S)	1	AP
	444-11610-30	PISTON RING SET (3RD O/S)	1	AP
	444-11610-40	PISTON RING SET (4TH O/S)	1	AP
19	137-11633-00	PIN, Piston	1	

B3

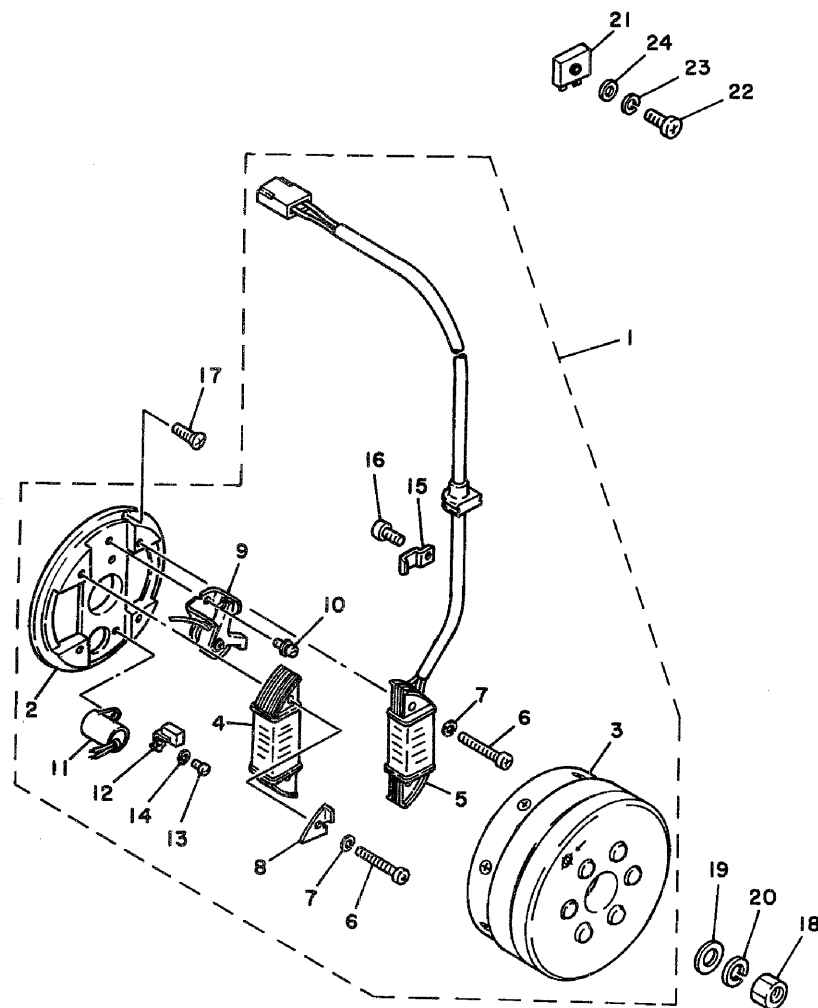
FIG. 2 CRANKSHAFT-PISTON



REF. NO.	PART NO.	DESCRIPTION	Q'TY	REMARKS
20	93450-17025	CIRCLIP	2	

B4

FIG. 3 FLY WHEEL MAGNETO

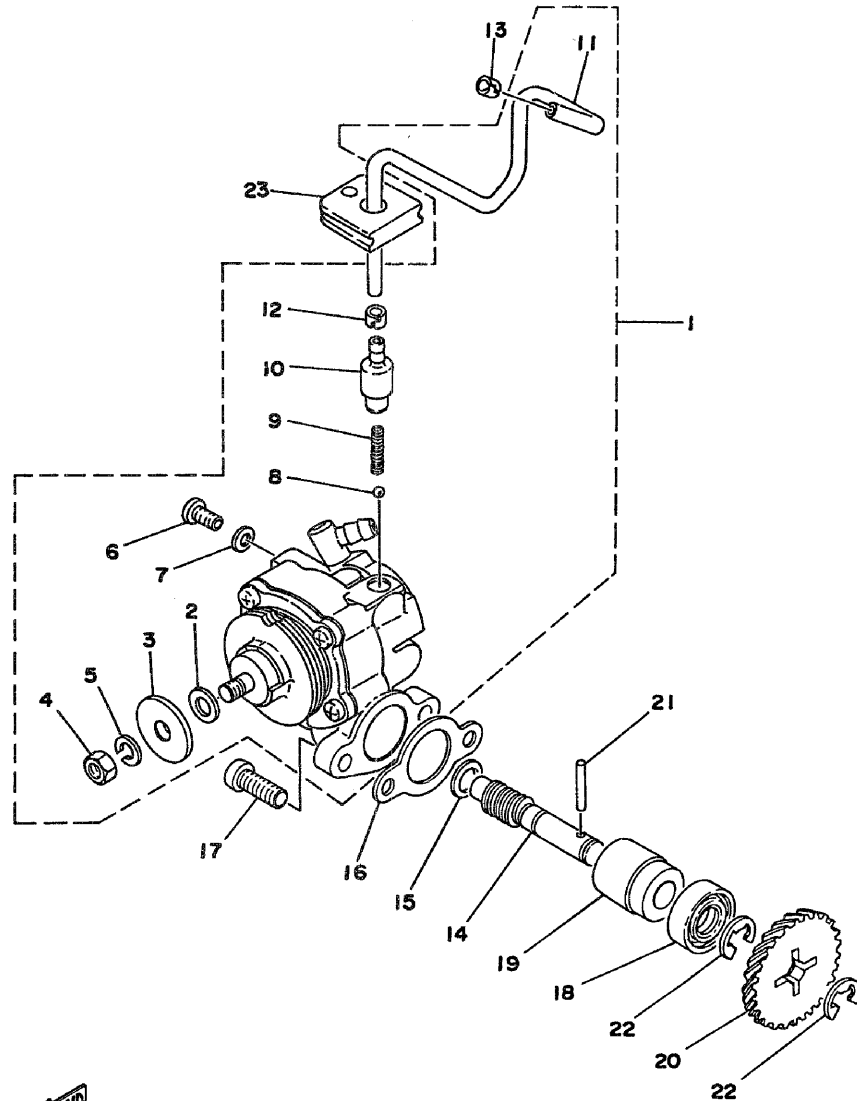


REF. NO.	PART NO.	DESCRIPTION	Q'TY	REMARKS
1	539-81300-10	FLYWHEEL MAGNETO ASSY	1	
2	539-81309-10	•BASE, magneto	1	
3	525-81350-10	•ROTOR ASSY	1	
4	461-81312-10	•COIL, source	1	
5	539-81313-10	•COIL, lighting 1	1	
6	98501-05035	•SCREW, Pan head	4	
7	92901-05100	•WASHER, sPring	4	
8	434-81332-10	•PLATE, timing	1	
9	434-81321-10	•CONTACT BREAKER ASSY	1	
10	110-81346-21	•SCREW, Pan head	1	
11	207-81326-10	•CONDENSER 2	1	
12	207-81331-10	•LUBRICATOR	1	
13	164-81246-21	•SCREW, Pan head	1	
14	92901-04100	•WASHER, sPring	1	
15	109-81328-11	•CLAMP	1	
16	164-81246-21	•SCREW, Pan head	1	
17	92701-06012	SCREW, flat head	2	
18	90170-12181	NUT	1	
19	90201-12593	WASHER, Plate	1	
20	92901-12100	WASHER, sPring	1	
21	353-81970-63	RECTIFIER ASSY	1	
22	98501-05020	SCREW, Pan head	1	
23	92901-05100	WASHER, sPring	1	
24	92901-05600	WASHER, Plate	1	

FWD

B5

FIG. 4 OIL PUMP



REF. NO.	PART NO.	DESCRIPTION	Q'TY	REMARKS
1	160-13101-00	OIL PUMP ASSY	1	
2	137-13137-00-03	.SHIM (0.3T)	1	UR
	137-13137-00-05	.SHIM (0.5T)	1	UR
	137-13137-00-10	.SHIM (1.0T)	1	UR
3	137-13138-01	.PLATE, adjustinē	1	
4	95301-05600	.NUT	1	
5	92901-05100	.WASHER, sPrinē	1	
6	98901-04008	.SCREW, bind	1	
7	90430-04004	.GASKET	1	
8	93505-32002	.BALL	1	
9	278-13169-00	.SPRING, check ball	1	
10	402-13552-00	.NOZZLE	1	
11	90445-05278	.HOSE	1	
12	90468-02033	.CLIP	1	
13	90468-02033	CLIP	1	
14	525-13175-01	SHAFT, worm	1	
15	90201-08624	WASHER, Plate	1	
16	126-13116-00	GASKET, PumP case	1	
17	98501-05016	SCREW, Pan head	2	
18	93101-10002	OIL SEAL	1	
19	137-13176-00	METAL, worm shaft outer	1	
20	353-13178-00	GEAR, PumP drive (28T)	1	
21	93603-22028	PIN, dowel	1	
22	93430-08006	CIRCLIP	2	
23	525-13174-00	HOLDER, oil PiPe	1	

B6

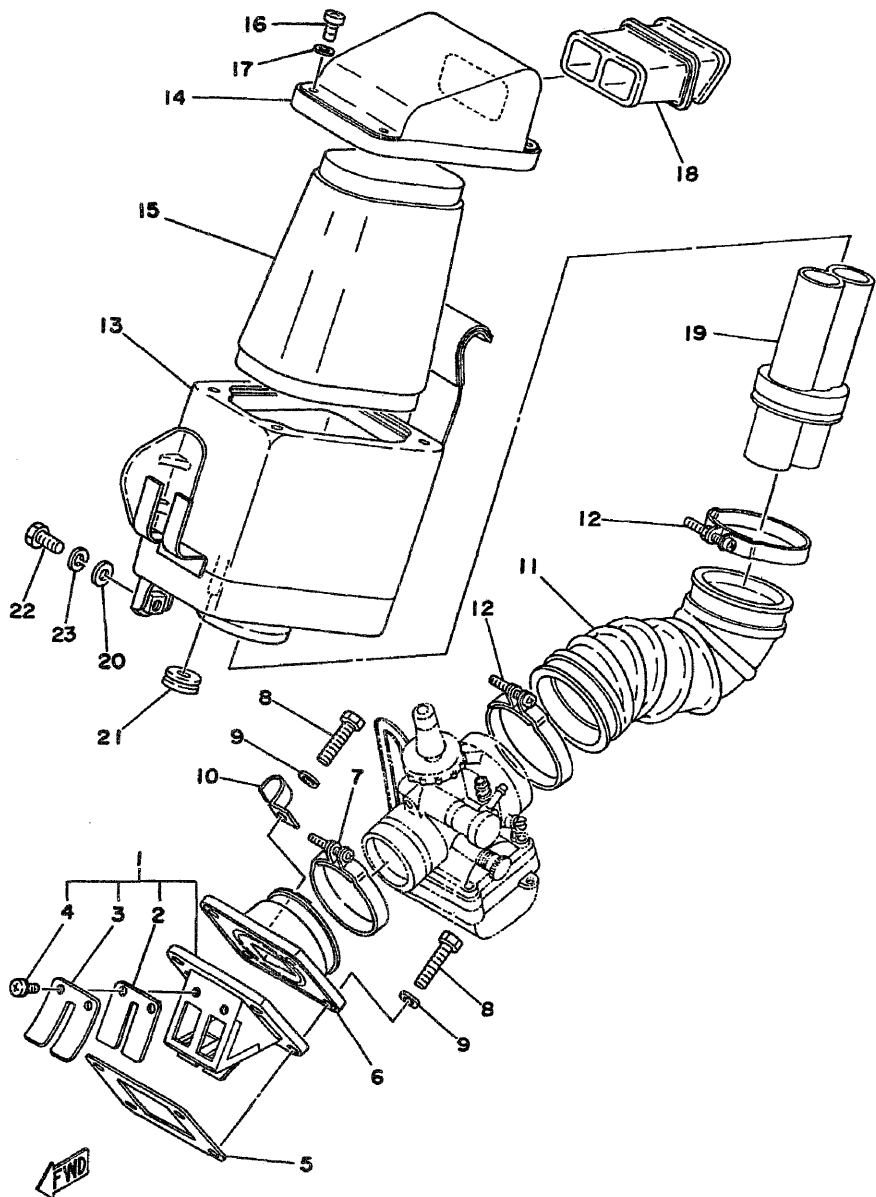


FIG. 5 INTAKE

REF. NO.	PART NO.	DESCRIPTION	Q'TY	REMARKS
1	539-13610-00	REED VALVE ASSY	1	
2	314-13613-01	•REED, valve	2	
3	539-13616-00	•STOPPER, reed valve	2	
4	97602-03108	•SCREW, Pan head with washer	4	
5	314-13621-02	GASKET, valve seat	1	
6	525-13565-01	JOINT, carburetor	1	
7	90460-43053	CLAMP, hose	1	
8	97301-06025	BOLT	4	
9	92901-06600	WASHER, Plate	4	
10	90462-05005	CLAMP	1	
11	525-14453-00	JOINT, air cleaner 1	1	
12	90460-49058	CLAMP, hose	2	
13	525-14411-00	CASE, air cleaner 1	1	
14	1K6-14412-00	CAP, cleaner case 1	1	
15	525-14451-01	ELEMENT, air cleaner	1	
16	98501-04008	SCREW, Pan head	4	
17	92901-04600	WASHER, Plate	4	
18	1K6-14437-00	DUCT	1	
19	1K6-14419-00	PIPE	1	
20	90201-06067	WASHER, Plate	1	
21	90480-10091	GROMMET	1	
22	97301-06016	BOLT	1	
23	92901-06100	WASHER, sPring	1	

B7

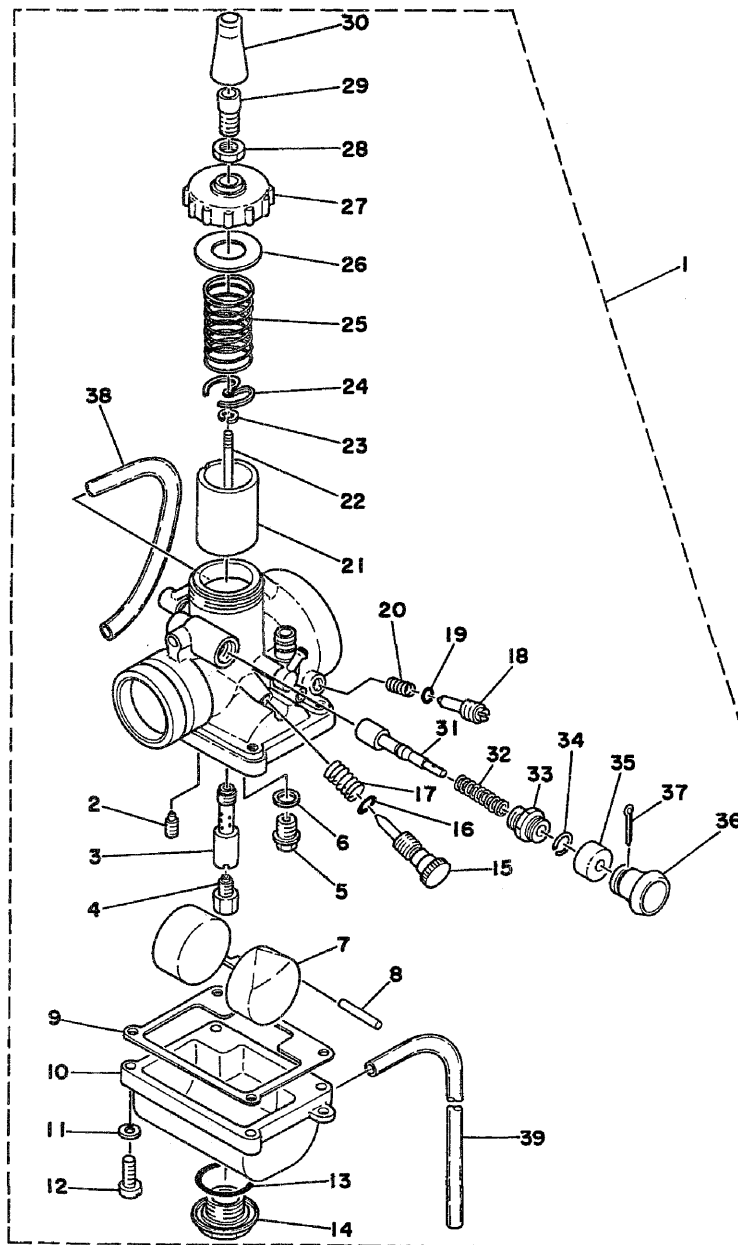


FIG. 6 CARBURETOR

REF. NO.	PART NO.	DESCRIPTION	Q'TY	REMARKS
1	1K6-14101-00	CARBURETOR ASSY 1	1	
2	260-14142-25	•JET, Pilot (#25.0)	1	
3	558-14141-30	•NOZZLE, main	1	
4	137-14143-20	•JET, main (#100)	1	UR STD
	137-14143-18	•JET, main (#090)	1	UR
	137-14143-22	•JET, main (#110)	1	UR
5	353-14190-18	•NEEDLE VALVE ASSY	1	
6	127-14195-00	•WASHER, needle valve	1	
7	525-14185-00	•FLDAT	1	
8	137-14186-01	•PIN, float	1	
9	304-14184-00	•GASKET, float chamber	1	
10	539-14181-08	•BDDY, float chamber 1	1	
11	92901-04100	•WASHER, spring	4	
12	98501-04016	•SCREW, Pan head	4	
13	558-14147-00	•O-RING	1	
14	500-14115-00	•PLUG, screw	1	
15	493-14122-00	•SCREW, throttle	1	
16	214-14147-00	•O-RING	1	
17	493-14133-00	•SPRING, throttle stop	1	
18	525-14123-00	•SCREW, air adjusting	1	
19	354-14147-00	•O-RING	1	
20	174-14134-00	•SPRING, air adjusting	1	
21	304-14112-30	•VALVE, throttle 1	1	
22	164-14116-06	•NEEDLE	1	
23	164-14137-00	•CLIP	1	
24	137-14136-00	•SEAT, spring	1	
25	276-14131-00	•SPRING, throttle valve	1	
26	193-14126-00	•GASKET	1	

B8

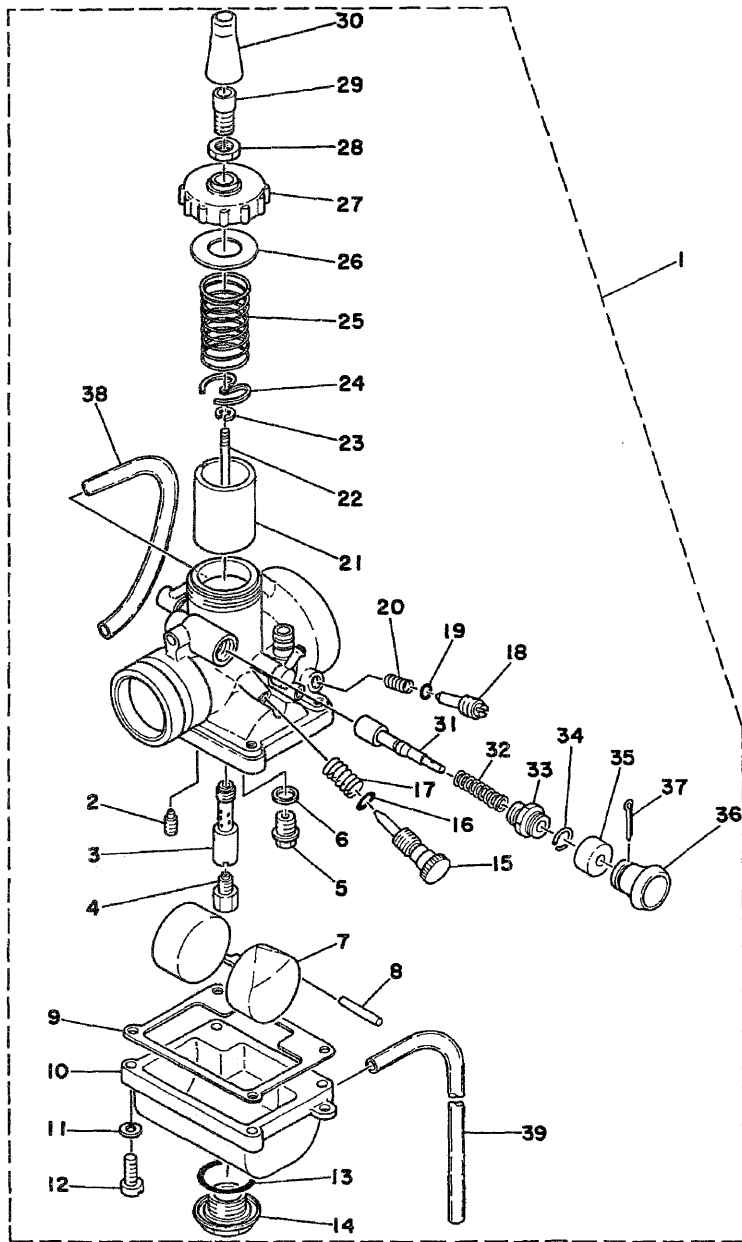


FIG. 6 CARBURETOR

REF. NO.	PART NO.	DESCRIPTION	Q'TY	REMARKS
27	525-14158-00	•TOP, mixing chamber	1	
28	802-14161-00	•NUT, cable adjusting	1	
29	360-14124-20	•SCREW, cable adjusting	1	
30	525-14169-00	•CAP	1	
31	304-14171-00	•PLUNGER, starter	1	
32	156-14135-00	•SPRING, Plunger	1	
33	152-14174-00	•CAP, Plunger	1	
34	152-14138-00	•CLIP, Plunger	1	
35	132-14173-00	•COVER, Plunger cap	1	
36	304-14261-00	•HOLDER	1	
37	91401-16015	•PIN, cotter	1	
38	313-14197-00	•PIPE	2	
39	183-14196-00	•PIPE	1	

B9

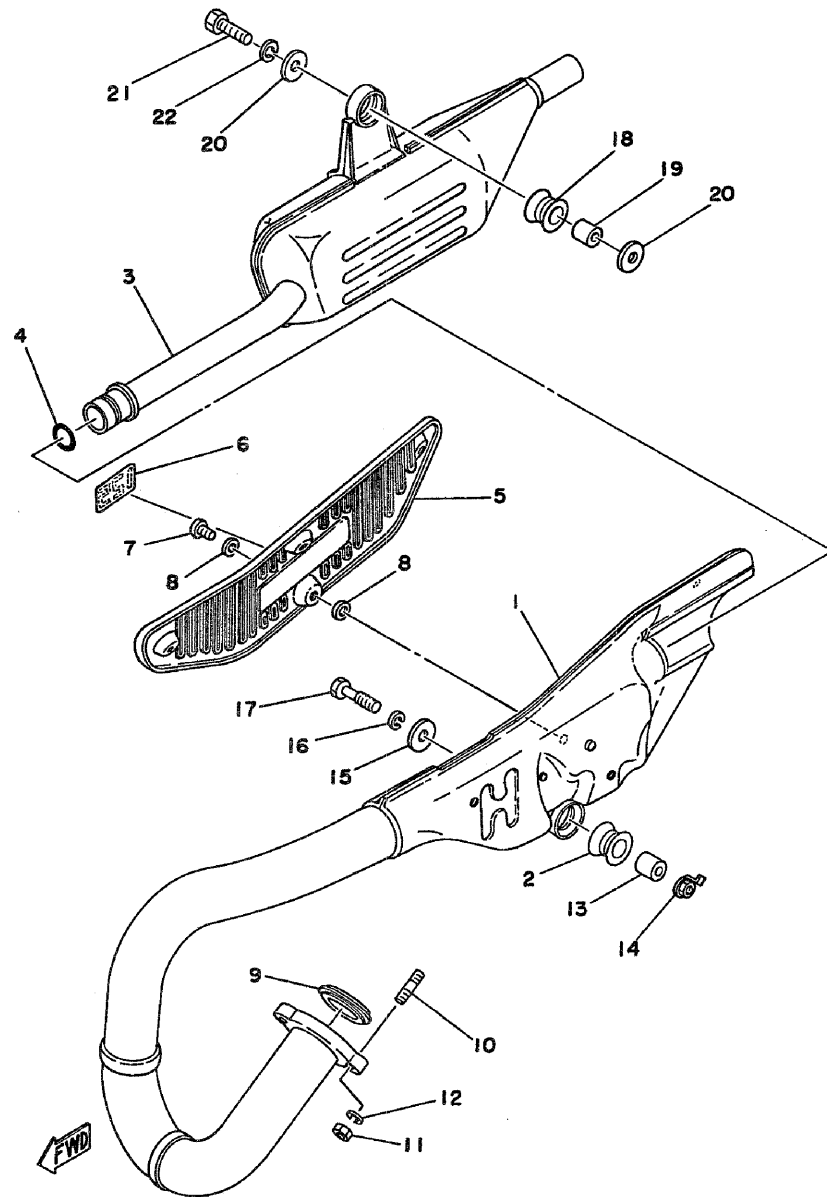
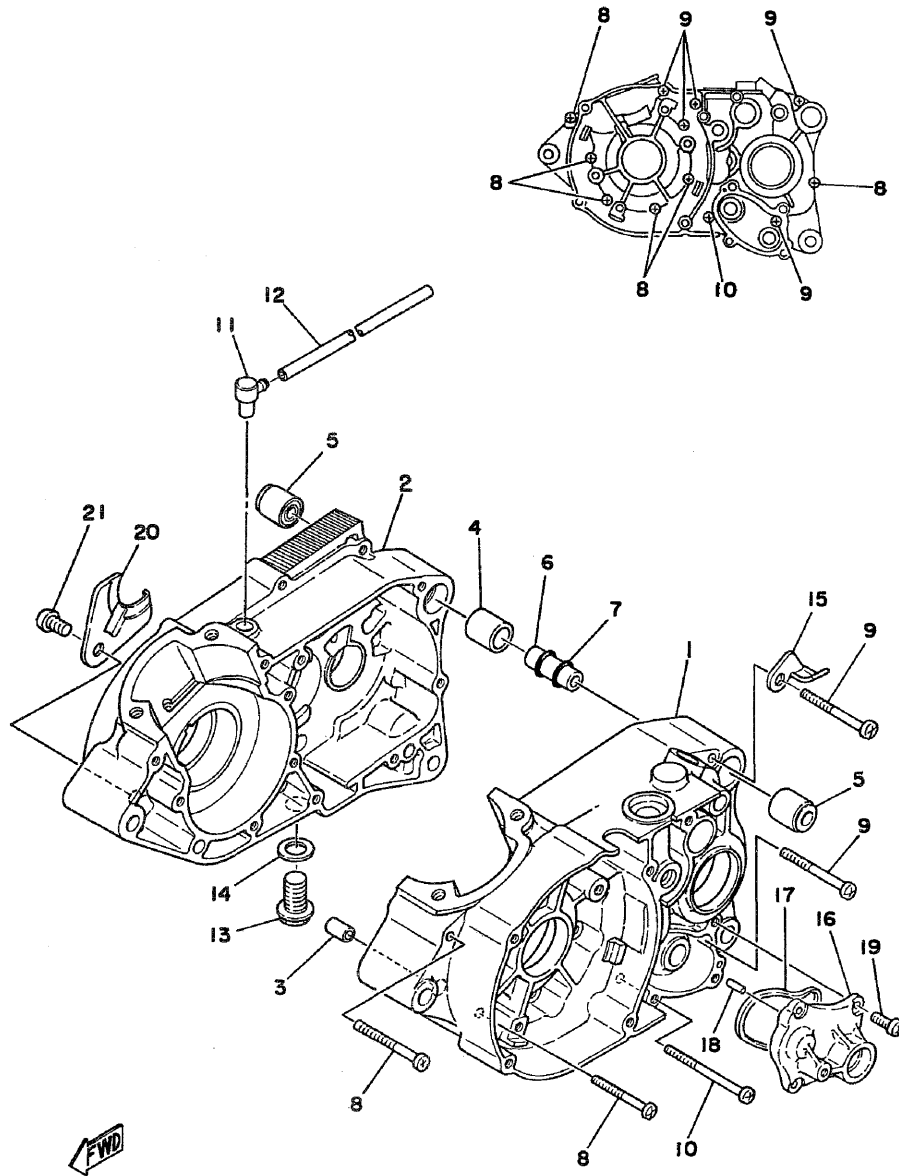


FIG. 7 EXHAUST

REF. NO.	PART NO.	DESCRIPTION	Q'TY	REMARKS
1	525-14610-02	EXHAUST PIPE ASSY 1	1	
2	565-14747-00	DAMPER, muffler	1	
3	1K6-14753-01	SILENCER, exhaust	1	
4	93210-19026	O-RING	1	
5	525-14718-00-36	PROTECTOR, muffler 1	1	clean white
6	1K6-14729-00	EMBLEM, Protector	1	
7	98903-06010	SCREW, bind	4	
8	90202-06010	WASHER, Plate	8	
9	152-14613-00	GASKET, exhaust Pipe	1	
10	90116-06016	BOLT, stud	2	
11	95301-06600	NUT	2	
12	92901-06100	WASHER, sPrinG	2	
13	90387-08258	COLLAR	1	
14	525-14681-00	NUT	1	
15	90201-08113	WASHER, Plate	1	
16	92901-08100	WASHER, sPrinG	1	
17	97301-08035	BOLT	1	
18	565-14747-00	DAMPER, muffler	1	
19	90387-08258	COLLAR	1	
20	90201-08113	WASHER, Plate	2	
21	97301-08030	BOLT	1	
22	92901-08100	WASHER, sPrinG	1	

B10

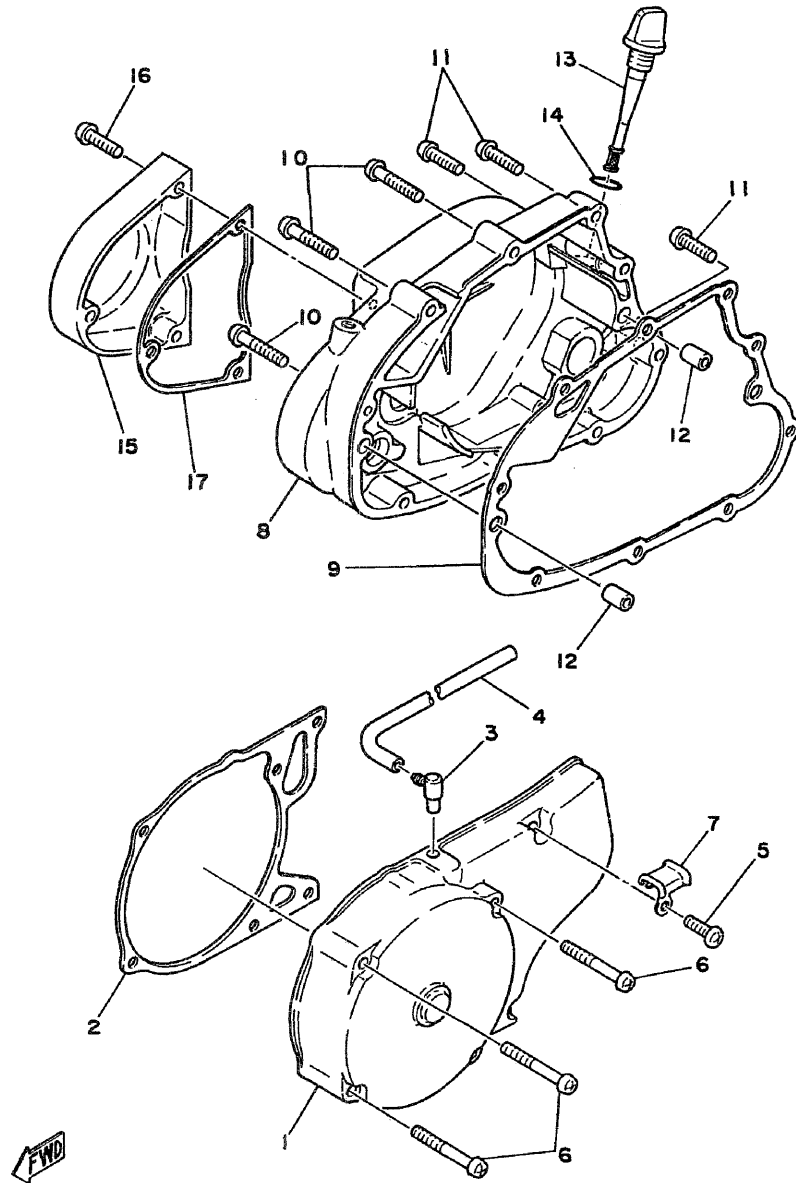
FIG. 8 CRANKCASE



REF. NO.	PART NO.	DESCRIPTION	Q'TY	REMARKS
1	525-15111-01	CRANKCASE 1	1	
2	525-15121-01	CRANKCASE 2	1	
3	91810-02014	PIN, dowel	1	
4	91810-19020	PIN, dowel	1	
5	328-15316-00	DAMPER, engine mount 1	2	
6	401-15317-00	SPACER, engine mount	1	
7	93210-11073	O-RING	2	
8	92501-06045	SCREW, Pan head	6	
9	92501-06055	SCREW, Pan head	5	
10	92501-06065	SCREW, Pan head	1	
11	498-15371-00	BREATHER	1	
12	90445-07177	HOSE	1	
13	90340-12005	PLUG, straight screw	1	
14	90430-12038	GASKET	1	
15	90465-10074	CLAMP	1	
16	437-15419-01	COVER, shifter 1	1	
17	401-15449-00	RING, rubber	1	
18	93603-12007	PIN, dowel	2	
19	92501-06015	SCREW, Pan head	4	
20	304-15128-00	HOLDER	1	
21	92501-08010	SCREW, Pan head	1	

B11

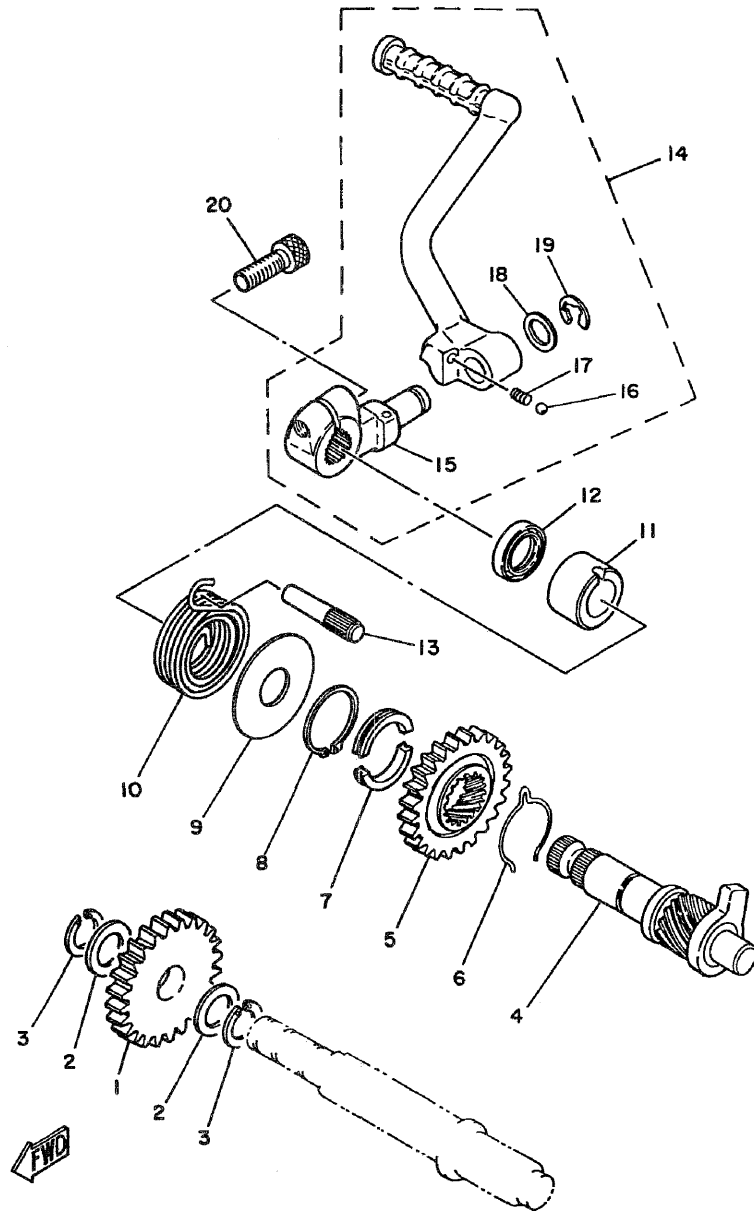
FIG. 9 CRANKCASE COVER



REF. NO.	PART NO.	DESCRIPTION	Q'TY	REMARKS
1	1K6-15411-00	COVER, crankcase 1	1	
2	525-15455-00	GASKET, crankcase cover	1	
3	498-15371-00	BREATHER	1	
4	90445-07177	HOSE	1	
5	92501-06020	SCREW, Pan head	1	
6	92501-06050	SCREW, Pan head	4	
7	90461-10016	CLAMP	1	
8	1K6-15431-00	COVER, crankcase 3	1	
9	401-15451-00	GASKET, crankcase cover	1	
10	92501-06035	SCREW, Pan head	5	
11	92501-06025	SCREW, Pan head	4	
12	91810-02014	PIN, dowel	2	
13	525-15362-01	PLUG, oil level	1	
14	93210-14104	O-RING	1	
15	1K6-15416-00	COVER, oil Pump	1	
16	92501-06025	SCREW, Pan head	3	
17	402-15456-00	GASKET, oil Pump cover 1	1	

B12

FIG. 10 KICK STARTER



REF. NO.	PART NO.	DESCRIPTION	Q'TY	REMARKS
1	525-15651-00	GEAR, kick idle (25T)	1	
2	137-17417-00-05	SHIM (0.5T)	2	
3	93440-15012	CIRCLIP	2	
4	525-15660-01	KICK AXLE ASSY	1	
5	315-15641-00	GEAR, kick (27T)	1	
6	90468-26048	CLIP	1	
7	248-15654-00	HOLDER, kick gear	2	
8	93410-30012	CIRCLIP	1	
9	401-15676-00	COVER, sPring	1	
10	90508-26041	SPRING, torsion	1	
11	1W1-15666-00	SPACER	1	
12	93101-17062	OIL SEAL	1	
13	257-15668-00	STOPPER	1	
14	525-15620-01	KICK CRANK ASSY	1	
15	525-15621-01-91	•BOSS, kick crank	1	uni chrome
16	93507-32009	•BALL	1	
17	90501-12081	•SPRING, comPrission	1	
18	90201-12541	•WASHER, Plate	1	
19	93430-08007	•CIRCLIP	1	
20	91316-08025	BOLT	1	

B13

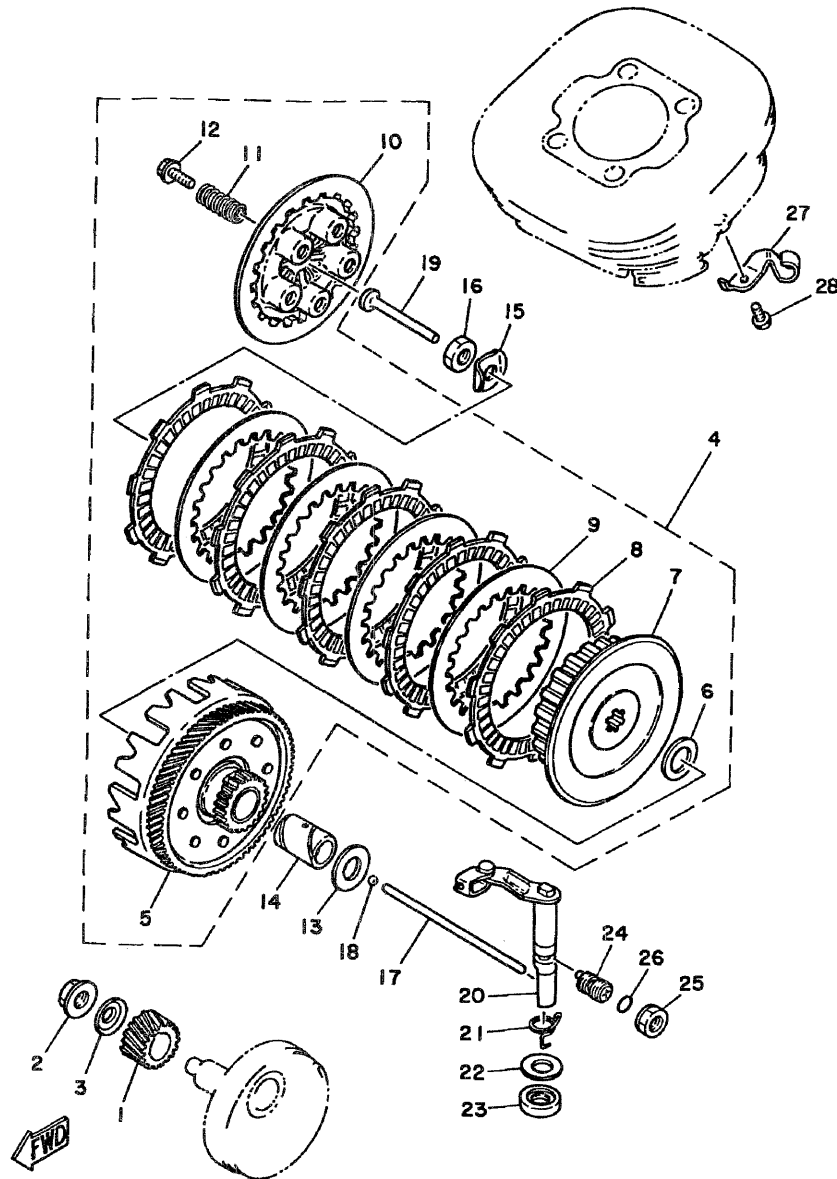
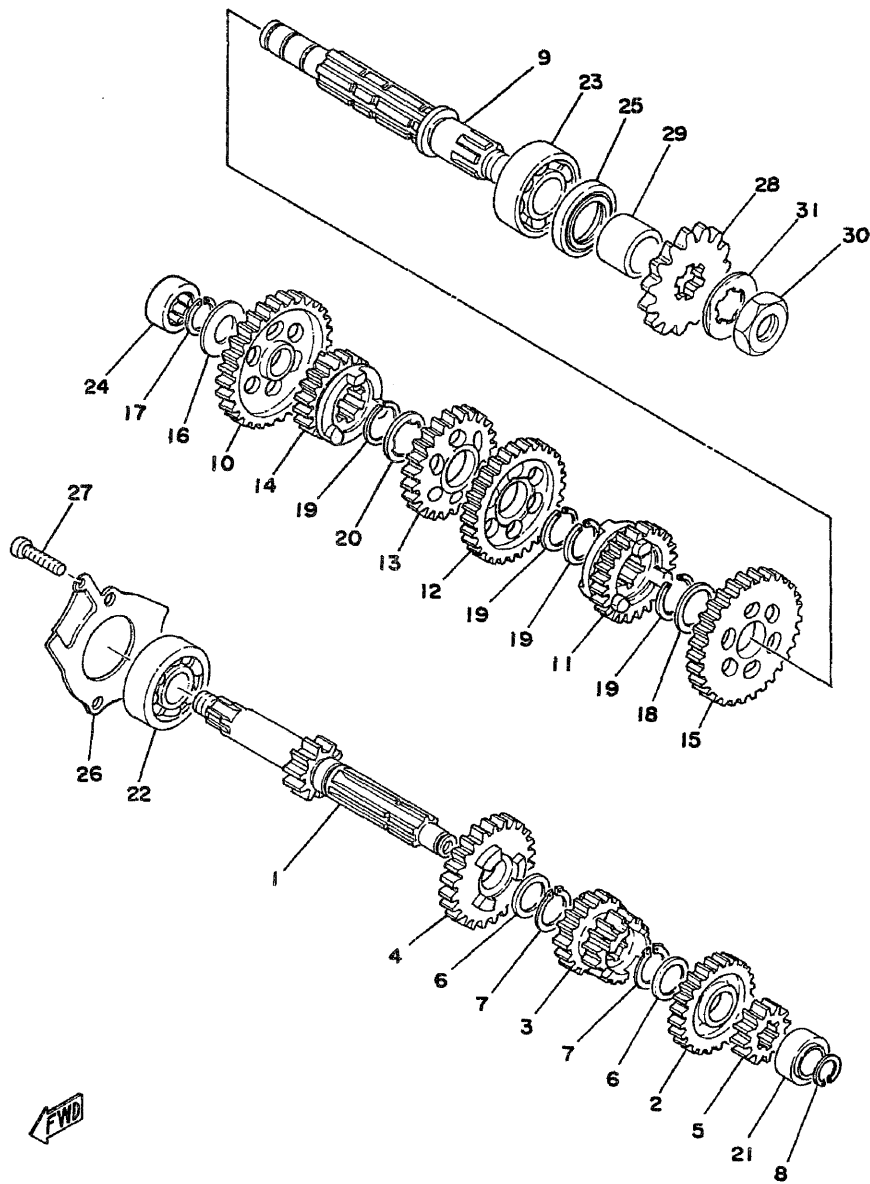


FIG. 11 CLUTCH

REF. NO.	PART NO.	DESCRIPTION	Q'TY	REMARKS
1	525-16111-00	GEAR, Primary drive (19T)	1	
2	90179-12244	NUT	1	
3	90208-12015	WASHER, conical spring	1	
4	525-16301-01	CLUTCH ASSY	1	
5	525-16150-00	•PRIMARY DRIVEN GEAR COMP.(74T)	1	
6	122-16164-00	•PLATE, thrust 2	1	
7	525-16371-02	•BOSS, clutch	1	
8	525-16321-00	•PLATE, friction	5	
9	137-16325-70	•PLATE, clutch 2	4	
10	525-16351-00	•PLATE, Pressure 1	1	
11	90501-20125	•SPRING, compression	5	
12	90159-05011	•SCREW, with washer	5	
13	90201-17543	WASHER, Plate	1	
14	90560-17147	SPACER	1	
15	90215-12007	WASHER, lock	1	
16	90170-12060	NUT	1	
17	1W1-16357-00	ROD, Push 2	1	
18	93503-16010	BALL	1	
19	137-16356-00	ROD, Push 1	1	
20	525-16380-00	PUSH LEVER ASSY	1	
21	90508-14132	SPRING, torsion	1	
22	90201-14217	WASHER, Plate	1	
23	93104-14004	OIL SEAL	1	
24	90149-12097	SCREW	1	
25	90179-12197	NUT	1	
26	93210-10096	O-RING	1	
27	525-15441-01	HOLDER, clutch cable	1	
28	97301-06012	BOLT	1	

B14

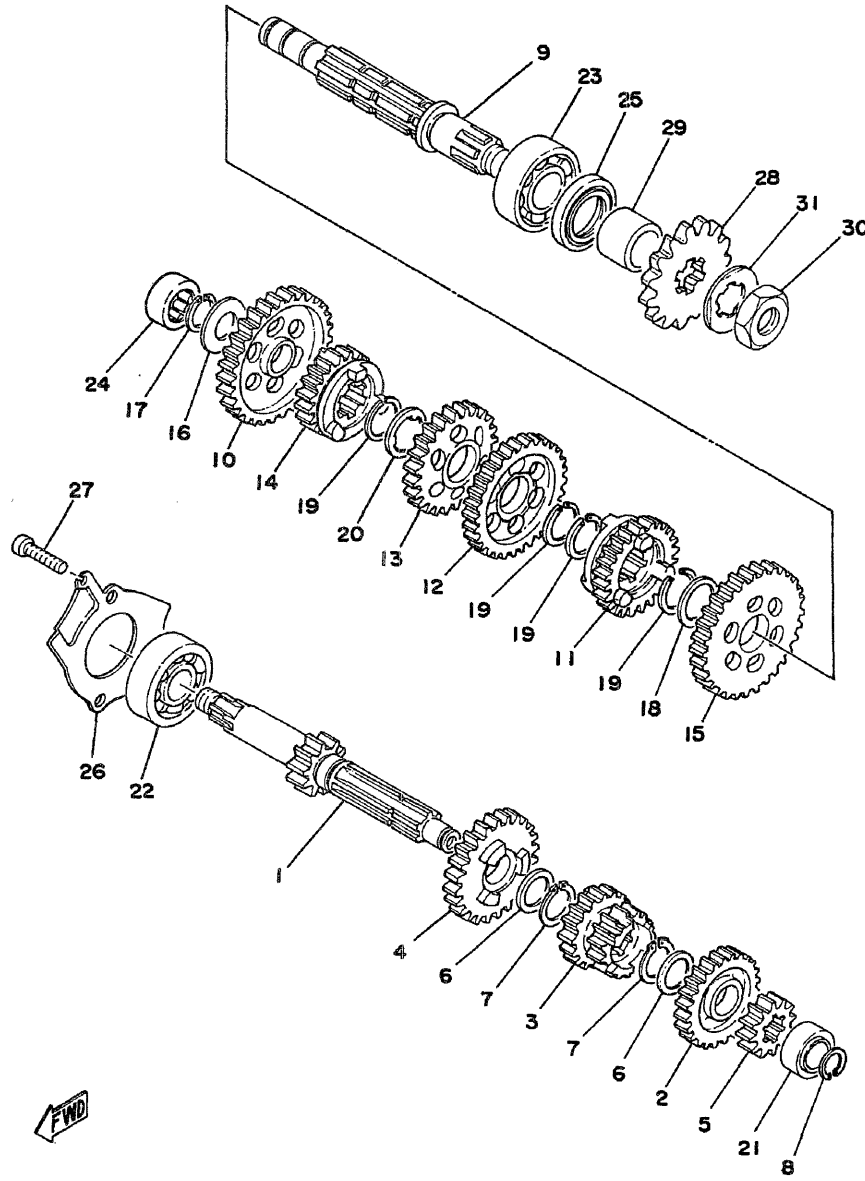
FIG. 12 TRANSMISSION



REF. NO.	PART NO.	DESCRIPTION	Q'TY	REMARKS
1	525-17411-00	AXLE, main (11T)	1	
2	525-17151-00	GEAR, 5th Pinion (23T)	1	
3	525-17131-00	GEAR, 3rd/4th Pinion (16T/19T)	1	
4	525-17161-00	GEAR, 6th Pinion (26T)	1	
5	525-17121-00	GEAR, 2nd Pinion (13T)	1	
6	90201-17545	WASHER, Plate	2	
7	93410-17037	CIRCLIP	2	
8	93440-13042	CIRCLIP	1	
9	525-17421-00	AXLE, drive	1	
10	525-17211-00	GEAR, 1st wheel (34T)	1	
11	525-17251-00	GEAR, 5th wheel (23T)	1	
12	525-17231-01	GEAR, 3rd wheel (30T)	1	
13	525-17241-01	GEAR, 4th wheel (27T)	1	
14	525-17261-00	GEAR, 6th wheel (20T)	1	
15	525-17221-00	GEAR, 2nd wheel (32T)	1	
16	164-17427-00-06	SHIM 1 (0.6T)	1	
17	93440-15012	CIRCLIP	1	
18	90201-20266	WASHER, Plate	1	
19	93410-20038	CIRCLIP	4	
20	90209-16133	WASHER	1	
21	93318-21305	BEARING, cylindrical	1	
22	93306-30303	BEARING (B6302Z)	1	
23	93306-20402	BEARING (B6204JRC3)	1	
24	93311-31515	BEARING, cylindrical	1	
25	93102-26042	OIL SEAL	1	
26	168-17471-00	PLATE, cover	1	
27	92501-06012	SCREW, Pan head	2	
28	174-17461-50	SPROCKET, drive (15T)	1	UR STD

B15

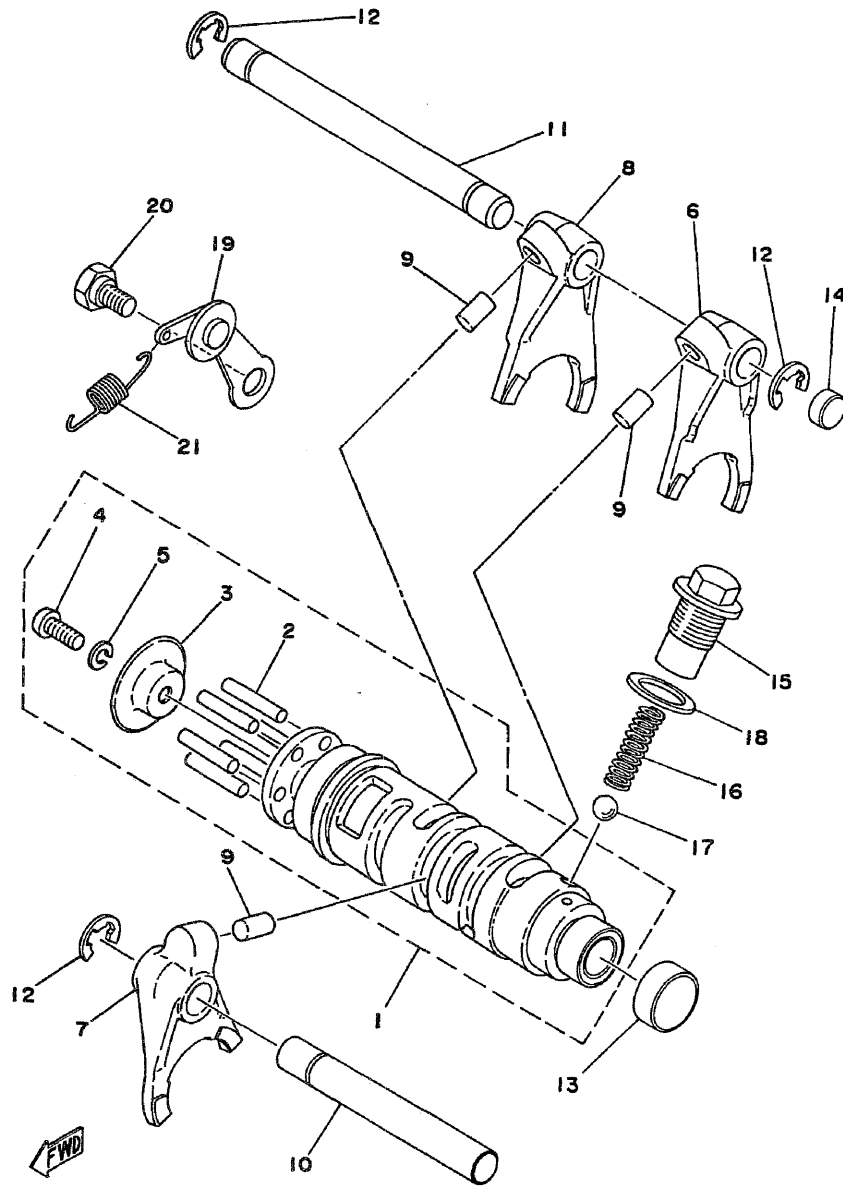
FIG. 12 TRANSMISSION



REF. NO.	PART NO.	DESCRIPTION	Q'TY	REMARKS
28	174-17461-40	SPROCKET, drive (14T)	1	UR
	174-17461-60	SPROCKET, drive (16T)	1	UR
29	90387-202A0	COLLAR	1	
30	90179-1601B	NUT	1	
31	90215-16020	WASHER, lock	1	

C2

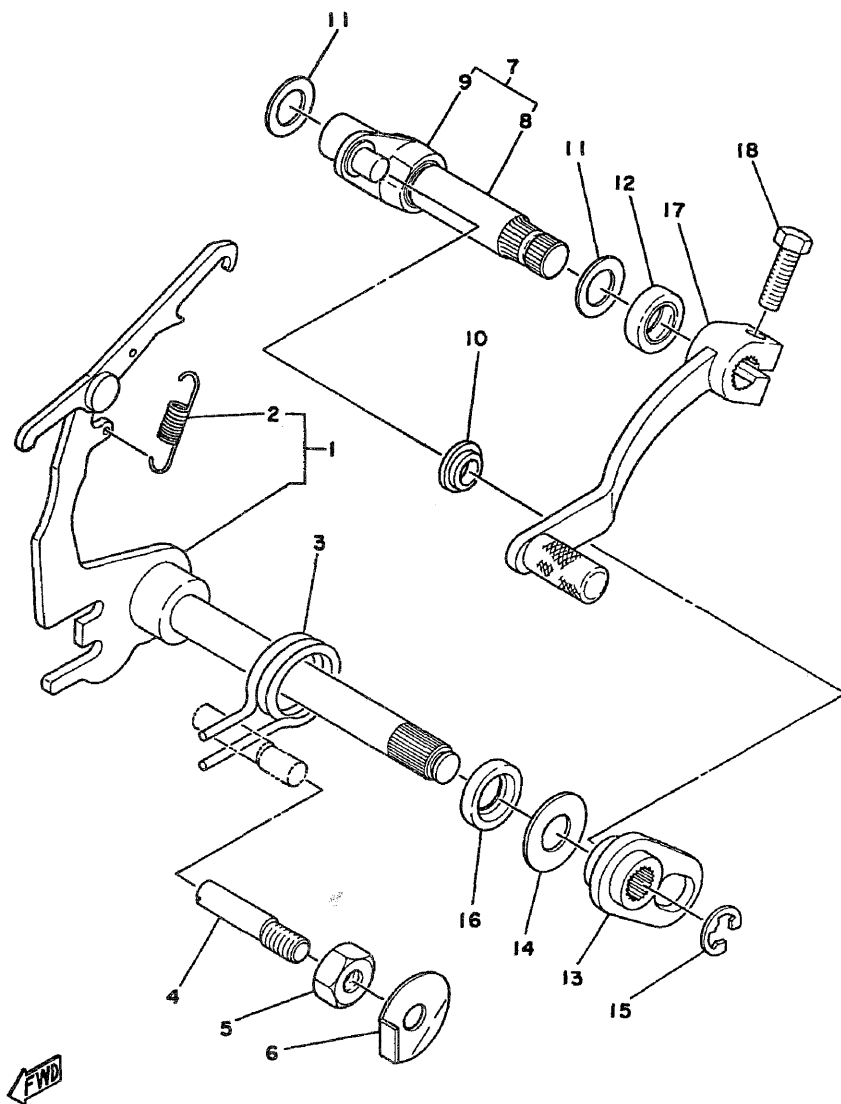
FIG. 13 SHIFT CAM.FORK



REF. NO.	PART NO.	DESCRIPTION	Q'TY	REMARKS
1	1G8-18540-00	SHIFT CAM ASSY	1	
2	93604-22050	•PIN, dowel	6	
3	525-18561-00	•PLATE, side 1	1	
4	98501-05012	•SCREW, Pan head	1	
5	92901-05100	•WASHER, sPring	1	
6	525-18511-00	FORK, shift 1	1	
7	525-18512-00	FORK, shift 2	1	
8	525-18513-00	FORK, shift 3	1	
9	90250-06013	PIN, straight	3	
10	257-18531-00	BAR, shift fork Guide 1	1	
11	363-18535-00	BAR, shift fork Guide 2	1	
12	93430-08006	CIRCLIP	3	
13	90338-20023	PLUG	1	
14	90338-10063	PLUG	1	
15	90109-14385	BOLT	1	
16	90501-12083	SPRING, comPression	1	
17	93505-16006	BALL	1	
18	137-15353-00	GASKET, drain	1	
19	525-18140-00	STOPPER LEVER ASSY	1	
20	90109-06001	BOLT	1	
21	90506-09112	SPRING, tension	1	

C3

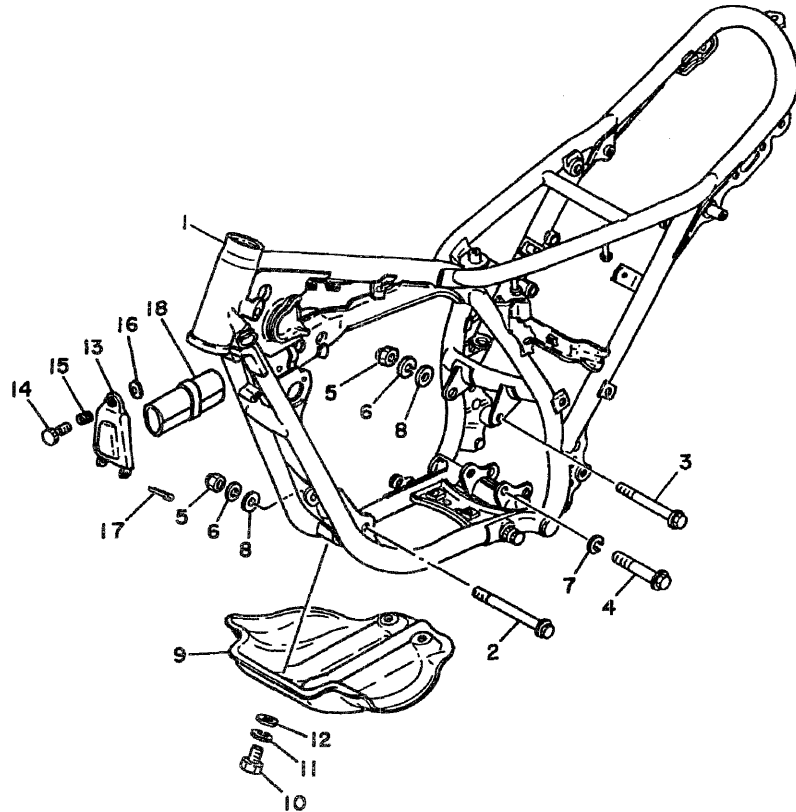
FIG. 14 SHIFT SHAFT-PEDAL



REF. NO.	PART NO.	DESCRIPTION	Q'TY	REMARKS
1	525-18101-01	SHIFT SHAFT ASSY	1	
2	90506-09009	•SPRING, tension	1	
3	90508-25273	SPRING, torsion	1	
4	90149-08096	SCREW	1	
5	90170-08029	NUT	1	
6	90215-08014	WASHER, lock	1	
7	401-18102-00	SHIFT SHAFT ASSY 2	1	
8	401-18155-01	•SHAFT, shift 2	1	
9	401-18151-00	•LEVER, shift 3	1	
10	401-18178-00	ROLLER, shift lever	1	
11	401-18334-00	SHIM	2	
12	93109-12012	OIL SEAL	1	
13	401-18152-01	LEVER, shift 4	1	
14	90201-12575	WASHER, Plate	1	
15	93430-08006	CIRCLIP	1	
16	93101-12060	OIL SEAL	1	
17	525-18111-00-93	PEDAL, shift	1	chrome-Plated
18	97321-06020	BOLT	1	

C4

FIG. 15 FRAME. TOOL

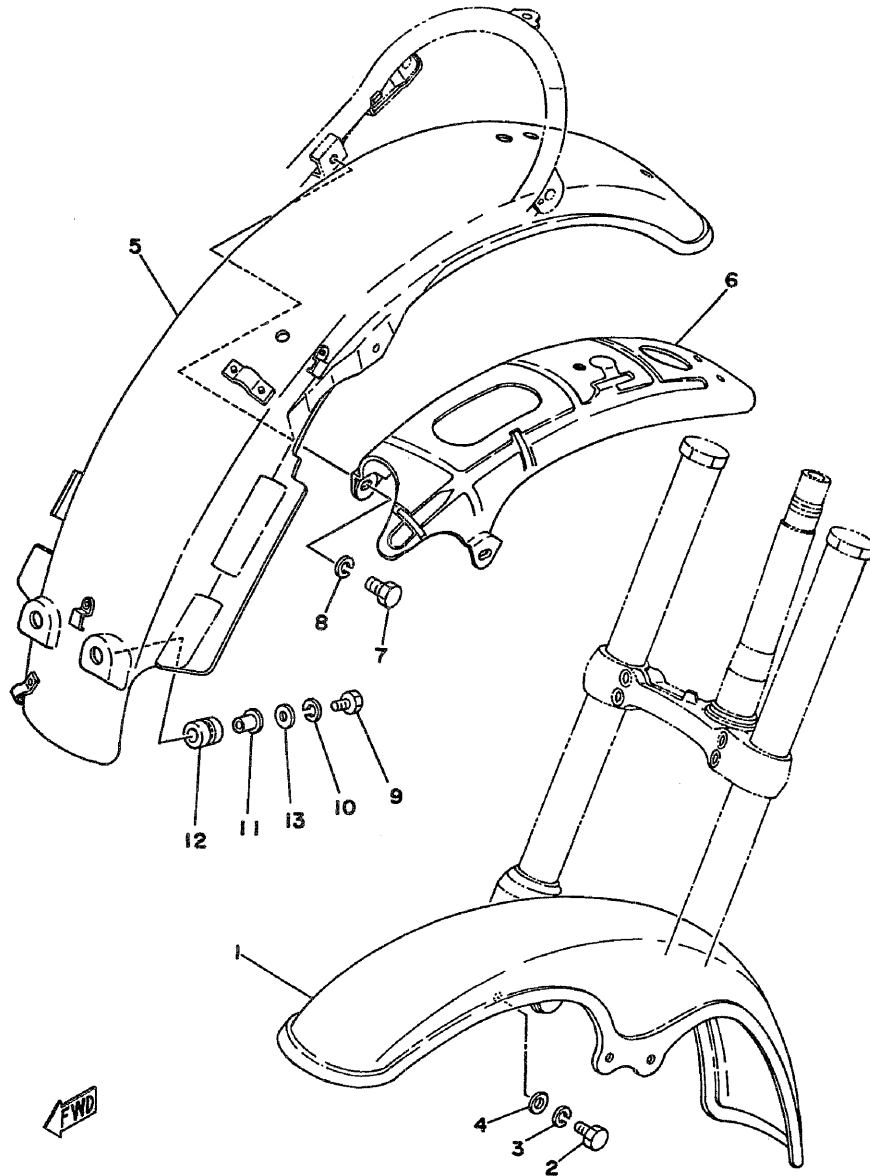


REF. NO.	PART NO.	DESCRIPTION	Q'TY	REMARKS
1	1K6-21110-40-35	FRAME COMP	1	silver
2	90105-08024	BOLT, washer based	1	
3	90105-08120	BOLT, washer based	1	
4	90105-10037	BOLT, washer based	1	
5	90185-08054	NUT, self-locking	2	
6	92901-08100	WASHER, sPring	2	
7	92901-10100	WASHER, sPring	1	
8	90209-08050	WASHER	2	
9	525-21471-00-39	PROTECTOR, engine	1	clear no buffing
10	97301-08018	BOLT	4	
11	92901-08100	WASHER, sPring	4	
12	92901-08600	WASHER, Plate	4	
13	461-28171-00	COVER, tool box	1	
14	434-28172-00	KNOB, tool box	1	
15	90501-10187	SPRING, compression	1	
16	90179-06034	NUT	1	
17	91401-30040	PIN, cotter	1	
18	525-28100-10	TOOL KIT	1	

FWD

C5

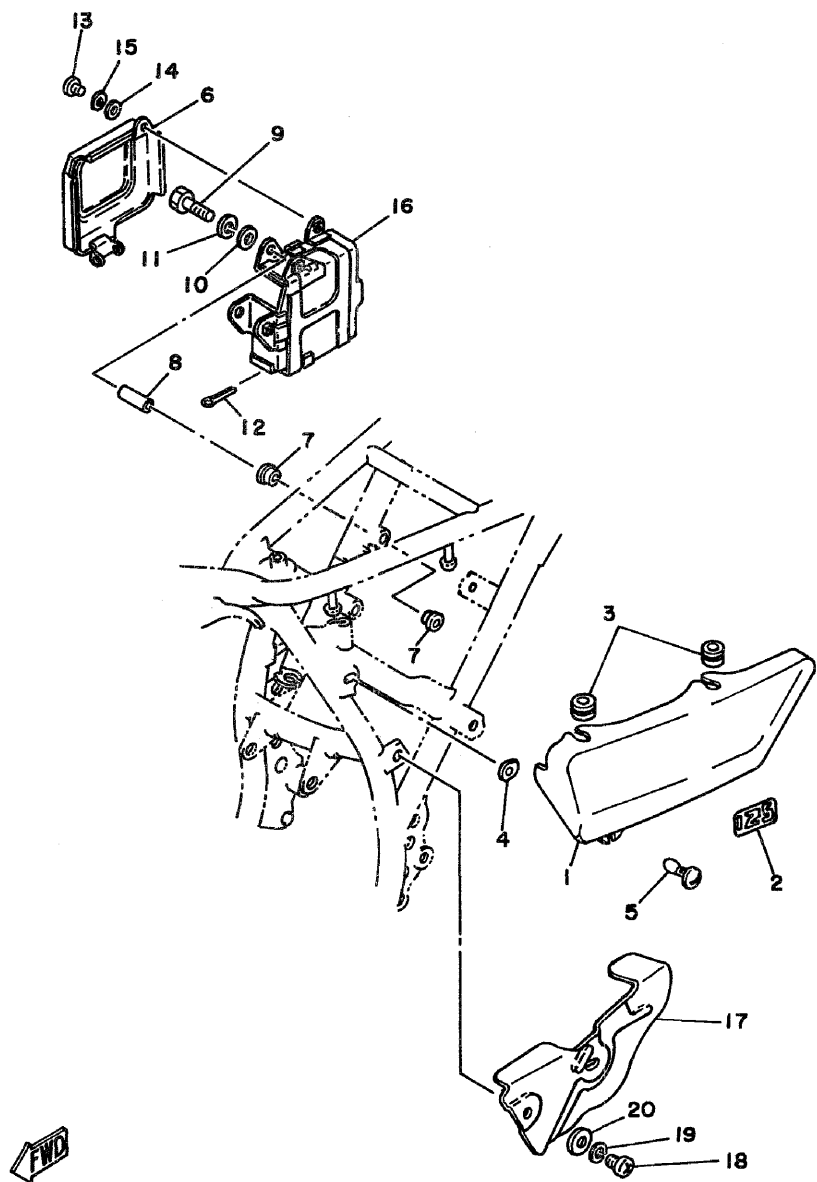
FIG. 16 FRONT FENDER•REAR FENDER



REF. NO.	PART NO.	DESCRIPTION	Q'TY	REMARKS
1	493-21510-00-36	FRONT FENDER COMP.	1	clean white
2	97301-06018	BOLT	4	
3	92901-06100	WASHER, sPring	4	
4	92901-06600	WASHER, Plate	4	
5	541-21610-00-36	REAR FENDER COMP.	1	clean white
6	539-21617-00	BRACKET, fender	1	
7	97301-06016	BOLT	2	
8	92901-06100	WASHER, sPring	2	
9	97301-06025	BOLT	2	
10	92901-06100	WASHER, sPring	2	
11	90387-07391	COLLAR	2	
12	90480-14102	GROMMET	2	
13	90201-06067	WASHER, Plate	2	

C6

FIG. 17 SIDE COVER



REF. NO.	PART NO.	DESCRIPTION	Q'TY	REMARKS
1	1K6-21711-11	COVER, side (L.H)	1	
2	1K6-21787-00	EMBLEM 7	1	
3	90480-12053	GROMMET	2	
4	90480-01141	GROMMET	1	
5	371-21714-00	KNOB, side cover 1	1	
6	461-21730-01	SIDE COVER ASSY 3	1	
7	461-21717-00	DAMPER, battery box	4	
8	539-21544-00	COLLAR 1	2	
9	97301-06045	BOLT	2	
10	92901-06600	WASHER, Plate	2	
11	92901-06100	WASHER, sPring	2	
12	91401-30035	PIN, cotter	1	
13	98501-05010	SCREW, Pan head	1	
14	92901-05200	WASHER, Plain	1	
15	92901-05100	WASHER, sPring	1	
16	461-21170-00	BOX COMP.	1	
17	1N4-21731-00-33	COVER, side 3	1	yamaha black
18	92501-06012	SCREW, Pan head	2	
19	92901-06100	WASHER, sPring	2	
20	92901-06600	WASHER, Plate	2	

C7

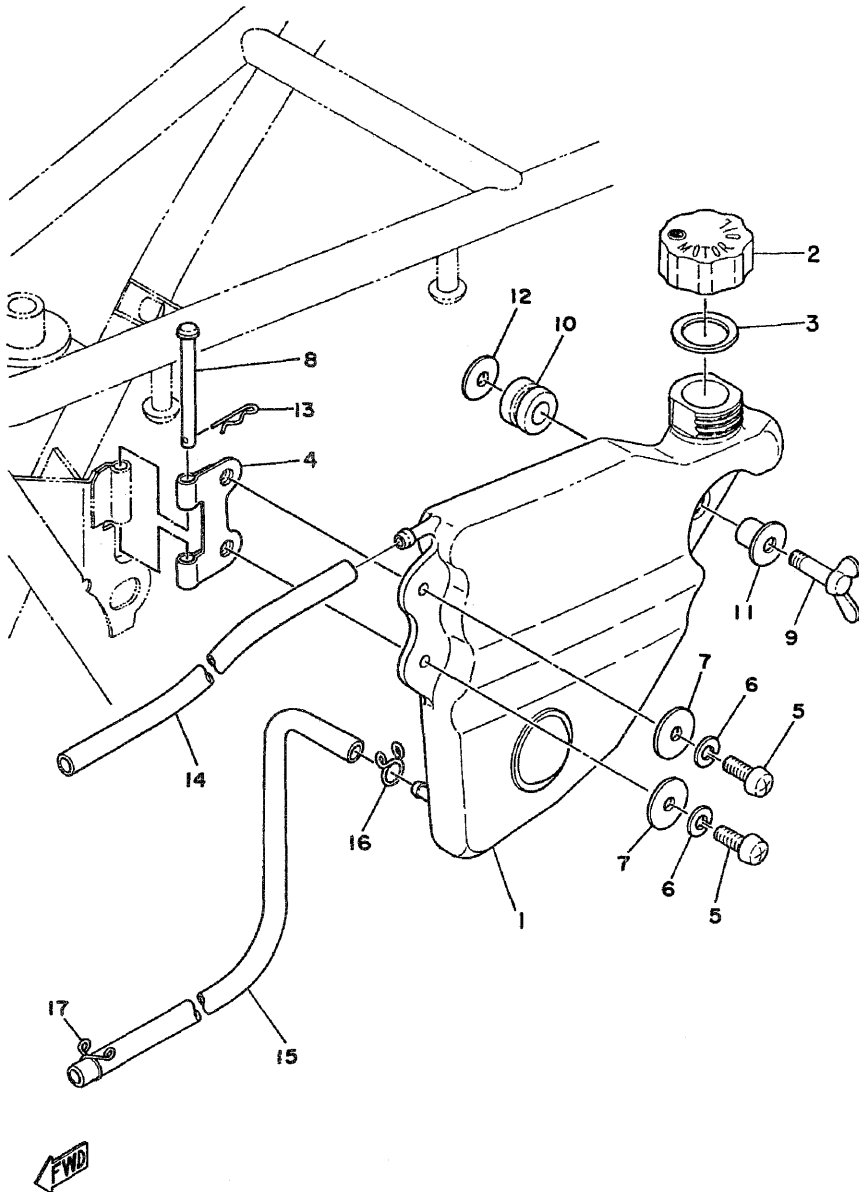
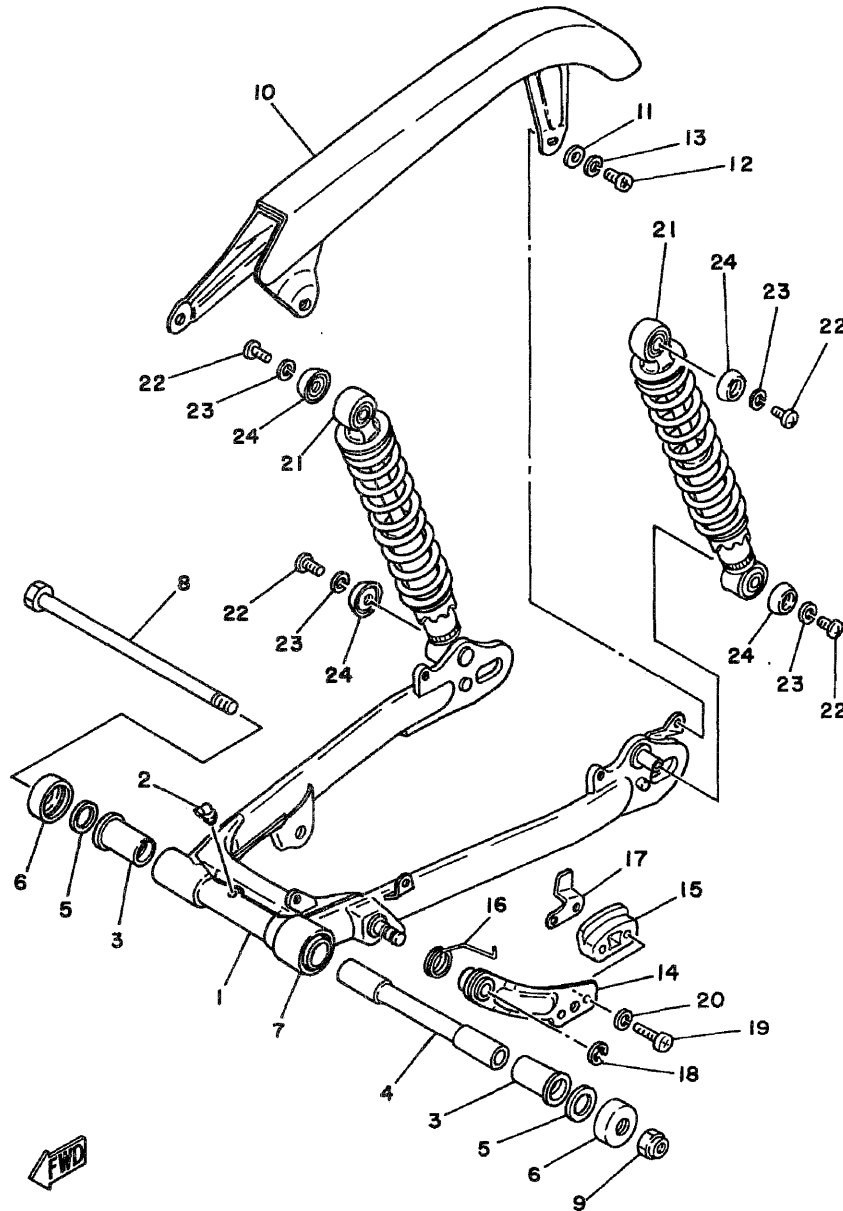


FIG. 18 OIL TANK

REF. NO.	PART NO.	DESCRIPTION	Q'TY	REMARKS
1	525-21751-00	TANK, oil	1	
2	434-21771-00	BDDY, caP	1	
3	90430-18067	GASKET	1	
4	525-21797-00	HINGE	1	
5	92501-06015	SCREW, Pan head	2	
6	92901-06100	WASHER, sPring	2	
7	90201-06067	WASHER, Plate	2	
8	91701-05055	PIN, clevis	1	
9	90122-06001	BDLT, wing	1	
10	90480-14102	GROMMET	1	
11	90387-06388	COLLAR	1	
12	90179-06013	NUT	1	
13	90468-10050	CLIP	1	
14	90445-09117	HOSE	1	
15	90445-09111	HOSE	1	
16	90467-10008	CLIP	1	
17	90467-08003	CLIP	1	

C8

FIG. 19 REAR ARM.SUSPENSION



REF. NO.	PART NO.	DESCRIPTION	Q'TY	REMARKS
1	1N4-22110-00-35	REAR ARM COMP.	1	silver
2	93700-06005	NIPPLE, Grease	1	
3	90386-18028	BUSH	2	
4	90389-12002	BUSH	1	
5	401-22127-00	SHIM	1	UN
6	401-22128-01	SEAL, Guard	2	
7	437-22151-00	SEAL, Guard	1	
8	525-22141-00	SHAFT, Pivot	1	
9	90185-12046	NUT, self-locking	1	
10	1N4-22311-00-33	CASE, chain	1	yamaha black
11	92901-05600	WASHER, Plate	3	
12	98501-05008	SCREW, Pan head	3	
13	92901-05100	WASHER, sPring	3	
14	434-22179-00-93	ARM, tensioner	1	chrome-plated
15	493-22178-01	TENSIONER	1	
16	90508-32140	SPRING, torsion	1	
17	434-22153-00-91	GUARD, chain	1	uni chrome
18	93430-10015	CIRCLIP	1	
19	98501-05025	SCREW, Pan head	2	
20	92901-05100	WASHER, sPring	2	
21	525-22210-00	SHOCK ABSORBER ASSY, rear	2	
22	92501-06012	SCREW, Pan head	4	
23	92901-06100	WASHER, sPring	4	
24	90207-06009	WASHER, finish	4	

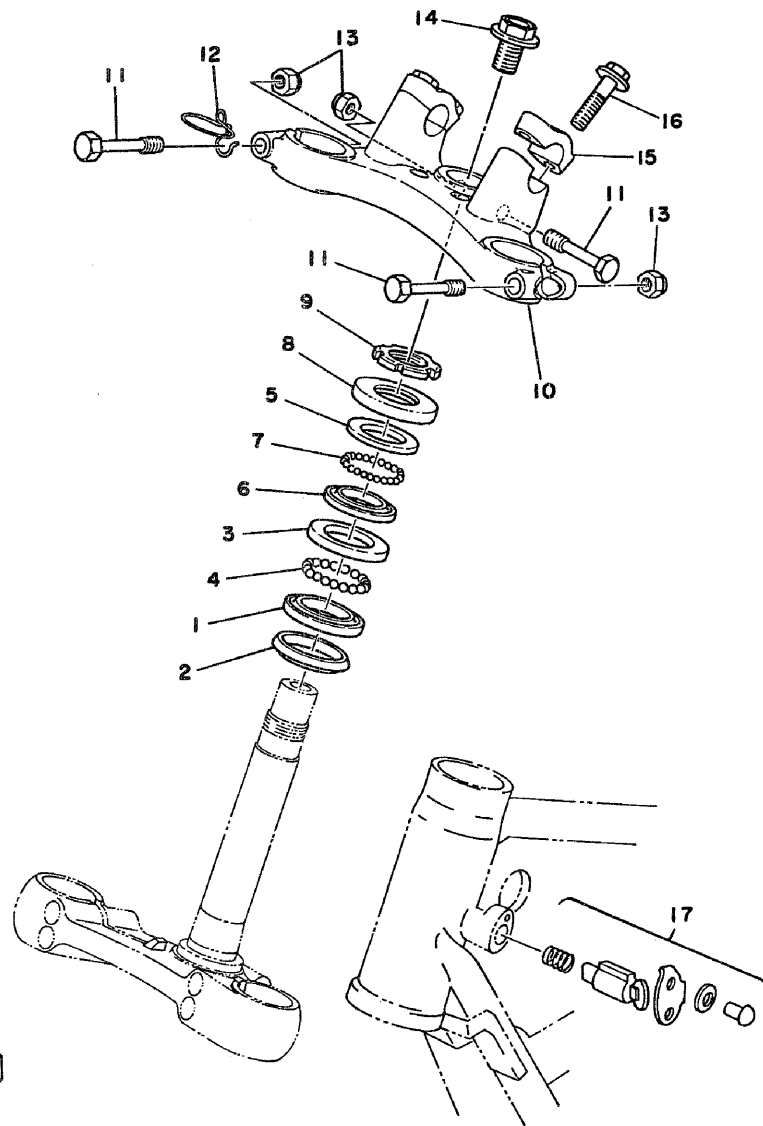


FIG. 20 STEERING

REF. NO.	PART NO.	DESCRIPTION	Q'TY	REMARKS
1	156-23411-00	RACE, ball 1	1	
2	164-23462-00	SEAL, steering	1	
3	156-23412-00	RACE, ball 2	1	
4	93501-04011	BALL	19	
5	122-23411-00	RACE, ball 1	1	
6	122-23412-00	RACE, ball 2	1	
7	93503-16010	BALL	22	
8	122-23416-00	COVER, ball race 2	1	
9	90179-25033	NUT	1	
10	525-23435-00	CROWN, handle	1	
11	97313-08055	BOLT	3	
12	525-23319-00	HOLDER, cable 2	1	
13	95601-08100	NUT, u	3	
14	90105-14060	BOLT, washer based	1	
15	1E6-23441-10-38	HOLDER, handle upper	2	clear buffing
16	95821-08035	BOLT, flange	4	
17	*	STEERING LOCK ASSY	1	LM

C10

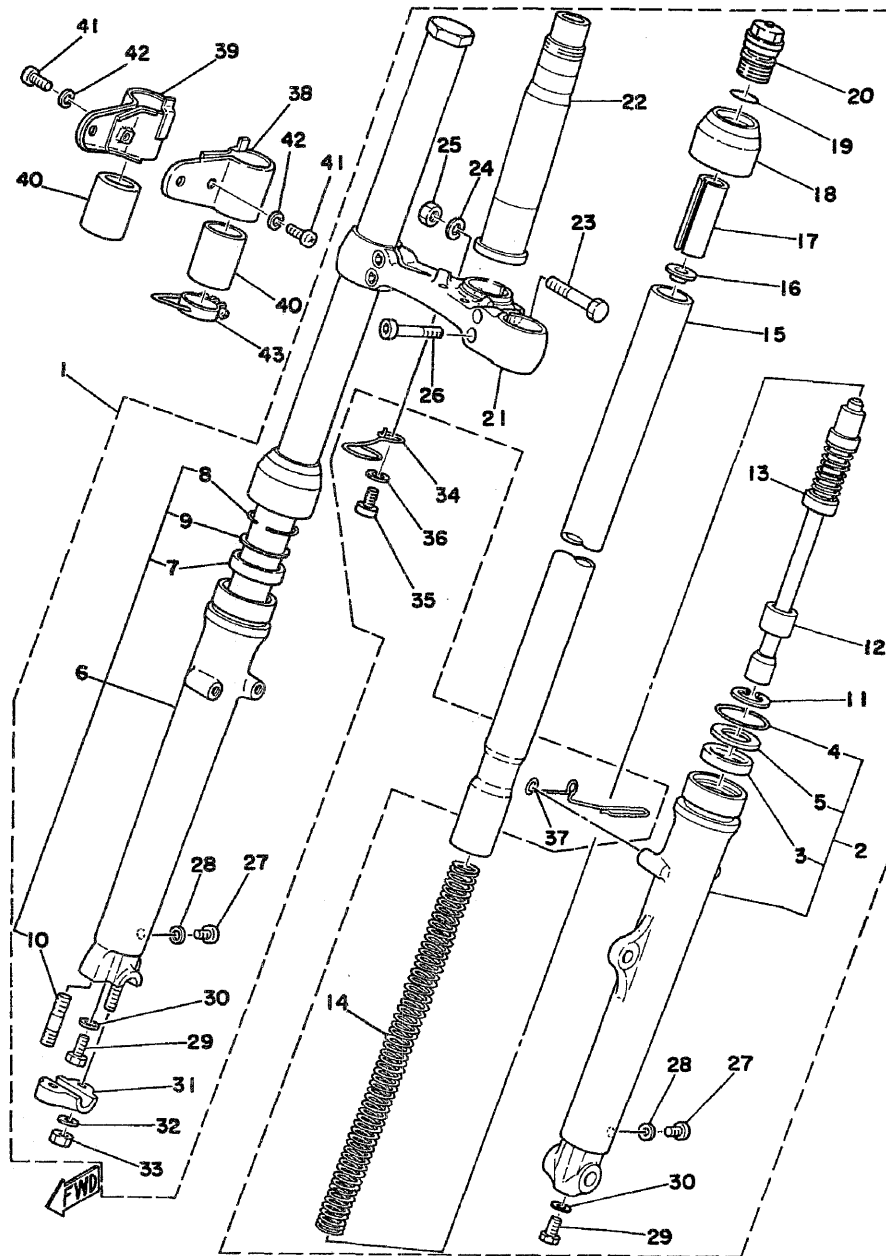


FIG. 21 FRONT FORK

REF. NO.	PART NO.	DESCRIPTION	Q'TY	REMARKS
1	541-23101-00	FRONT FORK ASSY	1	
2	525-23126-00	.TUBE, outer 1	1	
3	137-23145-01	..OIL SEAL	1	
4	315-23156-50	..CLIP, oil seal	1	
5	315-23146-50	..WASHER, oil seal	1	
6	525-23136-00	.TUBE, outer 2	1	
7	137-23145-01	..OIL SEAL	1	
8	315-23156-50	..CLIP, oil seal	1	
9	315-23146-50	..WASHER, oil seal	1	
10	90116-08261	..BOLT, stud	2	
11	535-23183-01	.CIRCLIP	2	
12	535-23171-00	.PISTON, front fork	2	
13	525-23170-00	.CYLINDER COMP., front fork	2	
14	525-23141-01	.SPRING, front fork	2	
15	525-23124-00	.TUBE, inner 1	2	
16	437-23117-01	.GUIDE, sPring	2	
17	315-23118-50	.SPACER	2	
18	535-23144-00	.SEAL, dust	2	
19	146-23114-00	.GASKET	2	
20	2K5-23111-00	.BOLT, caP	2	
21	539-23345-00	.BRACKET, lower	1	
22	541-23341-00	.SHAFT, steering	1	
23	322-23356-00	.BOLT 2	1	
24	92901-10100	.WASHER, sPring	1	
25	322-23357-00	.NUT	1	
26	322-23346-00	.BOLT 1	4	
27	122-23119-01	.PLUG, drain	2	
28	122-23129-00	.GASKET, drain Plug	2	

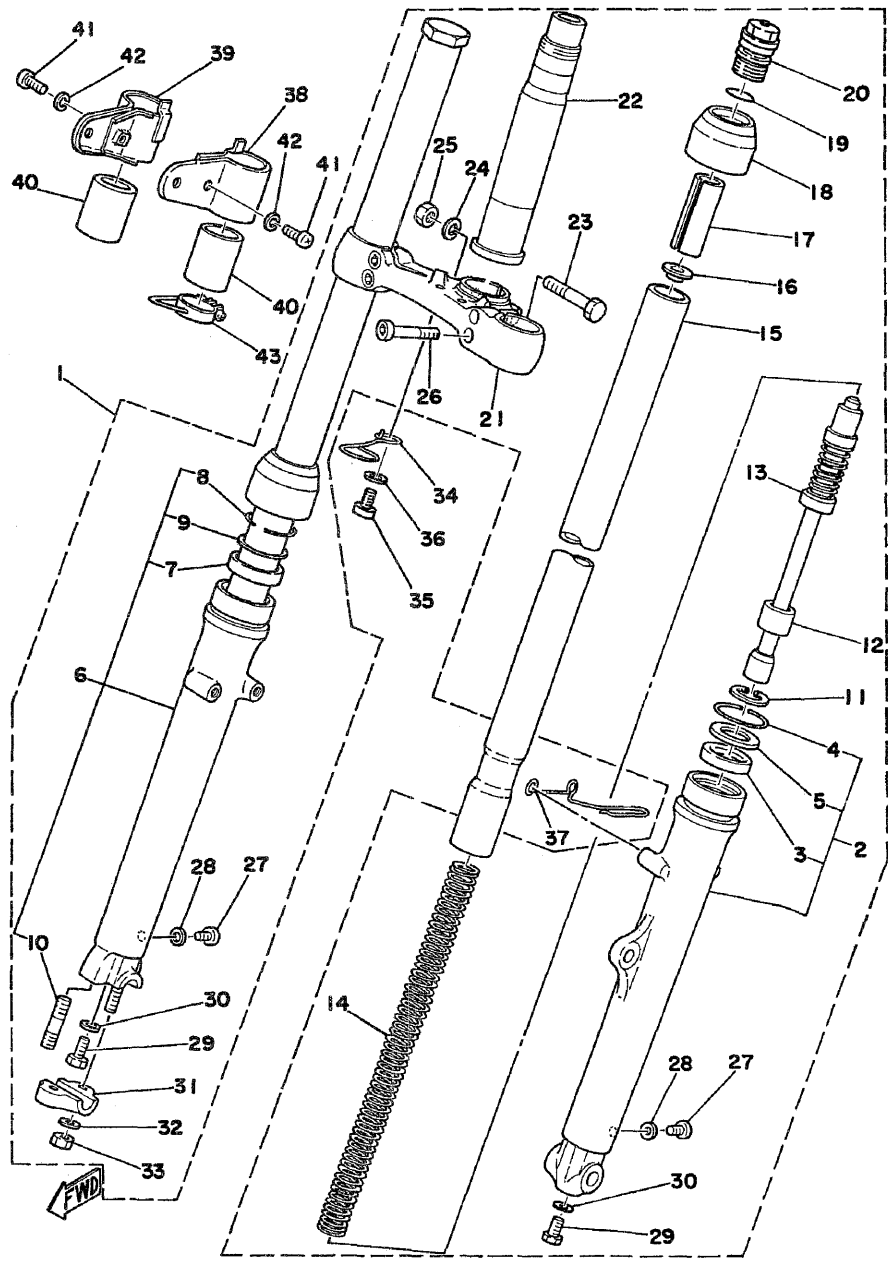
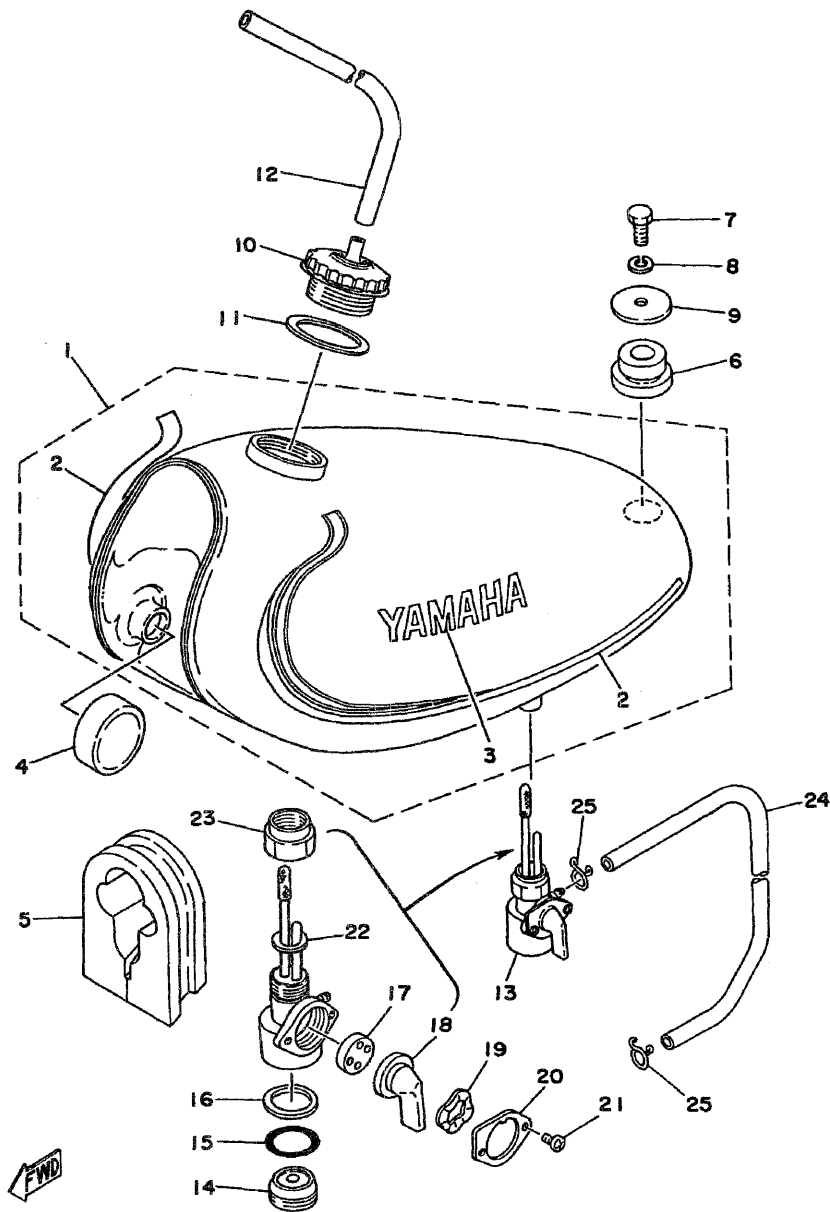


FIG. 21 FRONT FORK

REF. NO.	PART NO.	DESCRIPTION	Q'TY	REMARKS
29	91311-08020	•BOLT	2	
30	214-23158-00	•GASKET	2	
31	315-23167-51	•HOLDER, axle	1	
32	92901-08100	•WASHER, sPring	2	
33	90170-08176	•NUT	2	
34	539-23319-01	HOLDER, cable 2	1	
35	92501-06012	SCREW, Pan head	1	
36	92901-06100	WASHER, sPring	1	
37	461-23318-00	HOLDER, cable 1	1	
38	541-23121-00-93	COVER, upper 1	1	chrome-Plated
39	541-23131-01-93	COVER, upper 2	1	chrome-Plated
40	525-23163-00	GASKET	2	
41	92501-06018	SCREW, Pan head	2	
42	92901-06100	WASHER, sPring	2	
43	525-23318-01	HOLDER, cable 1	1	

C12

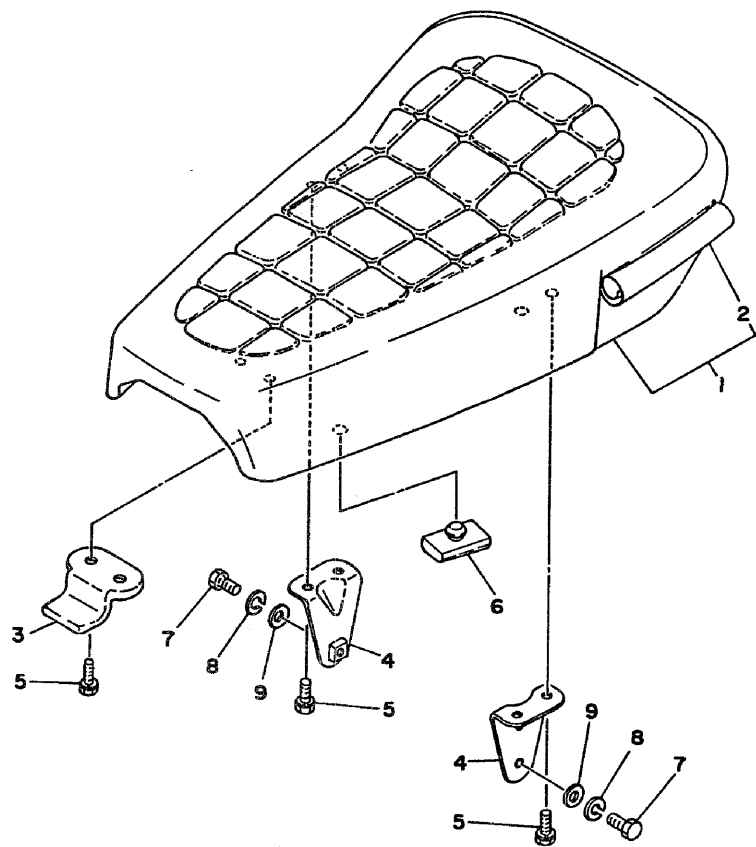
FIG. 22 FUEL TANK



REF. NO.	PART NO.	DESCRIPTION	Q'TY	REMARKS
1	525-24110-00-09	FUEL TANK COMP.	1	clean white
2	1K6-24240-30	•GRAPHIC SET	1	
3	554-24161-00	•EMBLEM 1	2	
4	278-24181-00	DAMPER, locatin& 1	2	
5	434-24183-00	DAMPER, locatin& 3	1	
6	90480-25135	GROMMET	1	
7	97301-08016	BOLT	1	
8	92901-08100	WASHER, sPring	1	
9	90209-08098	WASHER	1	
10	322-24611-02	BODY, caP	1	
11	90430-35122	GASKET	1	
12	90445-09238	HOSE	1	
13	434-24500-03	FUEL COCK ASSY 1	1	
14	434-24521-00	•CUP, filter	1	
15	132-24522-00	•GASKET	1	
16	434-24576-00	•GASKET, filter	1	
17	137-24523-00	•VALVE	1	
18	447-24524-00	•LEVER, cock	1	
19	132-24518-00	•WASHER, wave	1	
20	447-24525-00	•PLATE, lever fitting	1	
21	193-81145-20	•SCREW 1	2	
22	434-24532-00	•GASKET	1	
23	132-24531-00	•NUT	1	
24	90445-09073	HOSE	1	
25	90467-08003	CLIP	2	

FIG. 23 SEAT

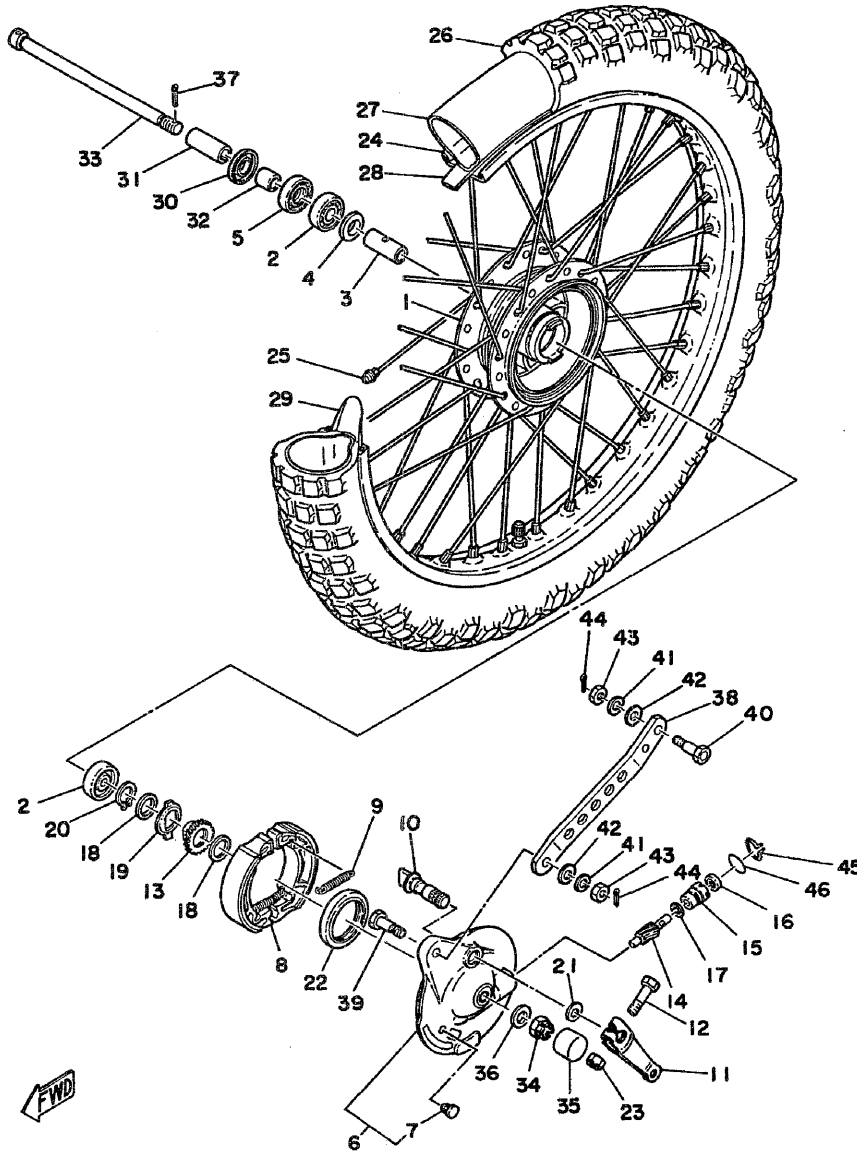
REF. NO.	PART NO.	DESCRIPTION	Q'TY	REMARKS
1	525-24710-00	SINGLE SEAT ASSY	1	
2	525-24711-00	COVER, single seat	1	
3	2Y0-24748-00	BRACKET, seat	1	
4	509-24738-01	BRACKET, seat	2	
5	90101-06304	BOLT	6	
6	509-24724-00	DAMPER, seat	4	
7	97301-06014	BOLT	2	
8	92901-06100	WASHER, sPring	2	
9	92901-06600	WASHER, Plate	2	



FWD

C14

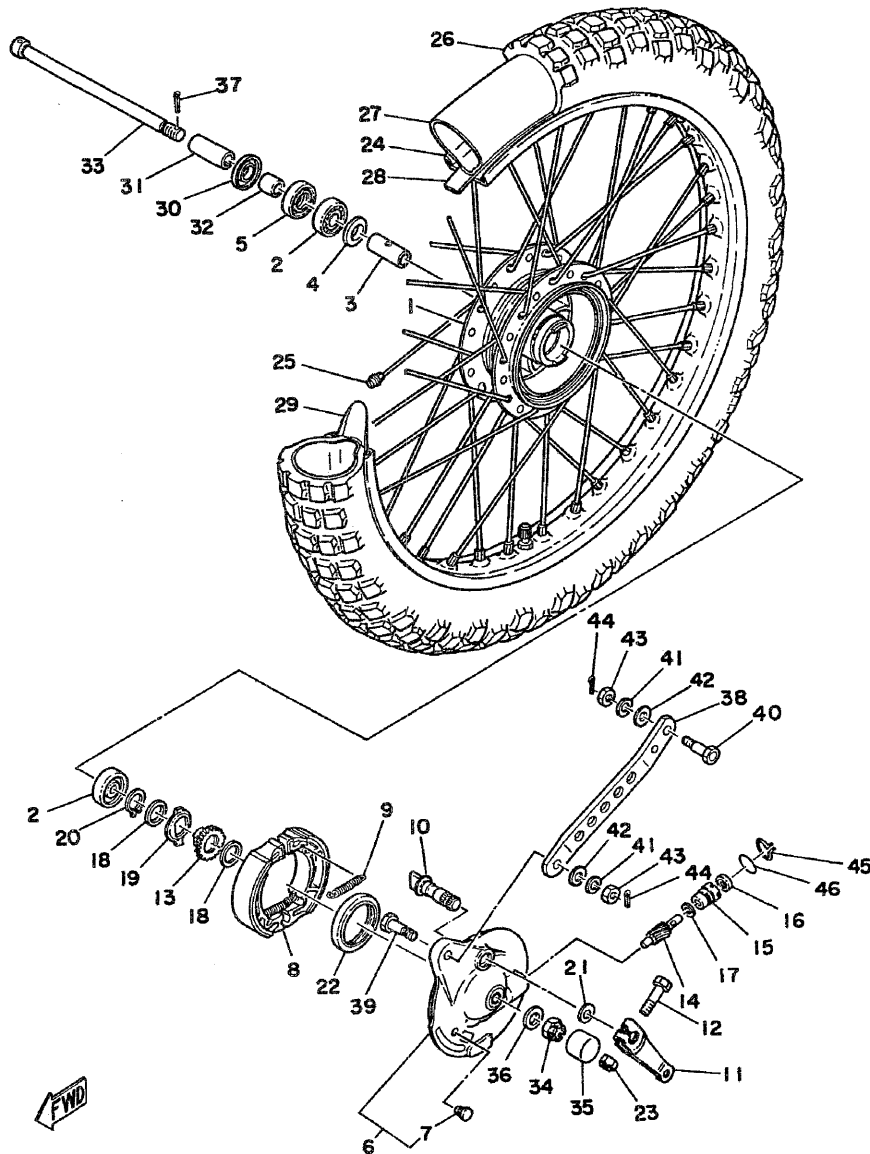
FIG. 24 FRONT WHEEL



REF. NO.	PART NO.	DESCRIPTION	Q'TY	REMARKS
1	248-25111-00-35	HUB, front	1	silver
2	93306-30103	BEARING (B6301Z)	2	
3	90560-12138	SPACER	1	
4	109-25315-00	FLANGE, sPacer	1	
5	93102-18008	OIL SEAL	1	
6	1N4-25016-00-35	BRAKE SHOE PLATE ASSY	1	
7	90480-10068	.GROMMET	1	
8	437-25130-00	BRAKE SHOE COMP.	2	
9	90506-16150	SPRING, tension	2	
10	434-25151-00	CAMSHAFT	1	
11	401-25155-11	LEVER, camshaft 1	1	
12	90101-06278	BOLT	1	
13	248-25135-11	GEAR, drive	1	
14	248-25138-11	GEAR, meter	1	
15	109-25136-00	BUSH	1	
16	93104-07003	OIL SEAL	1	
17	90201-07076	WASHER, Plate	1	
18	90201-20269	WASHER, Plate	2	
19	183-25149-00	CLUTCH, meter	1	
20	93410-20009	CIRCLIP	1	
21	137-25159-00	SEAL, camshaft	1	
22	93105-47007	OIL SEAL	1	
23	95601-06100	NUT, u	1	
24	94416-21165	RIM (1.60-21)	1	
25	345-25104-01	SPOKE SET, front	1	
26	94127-21151	TIRE (2.75-21)	1	
27	94227-21031	TUBE (2.75-21)	1	
28	94327-21024	BAND, rim (2.75-21)	1	

C15

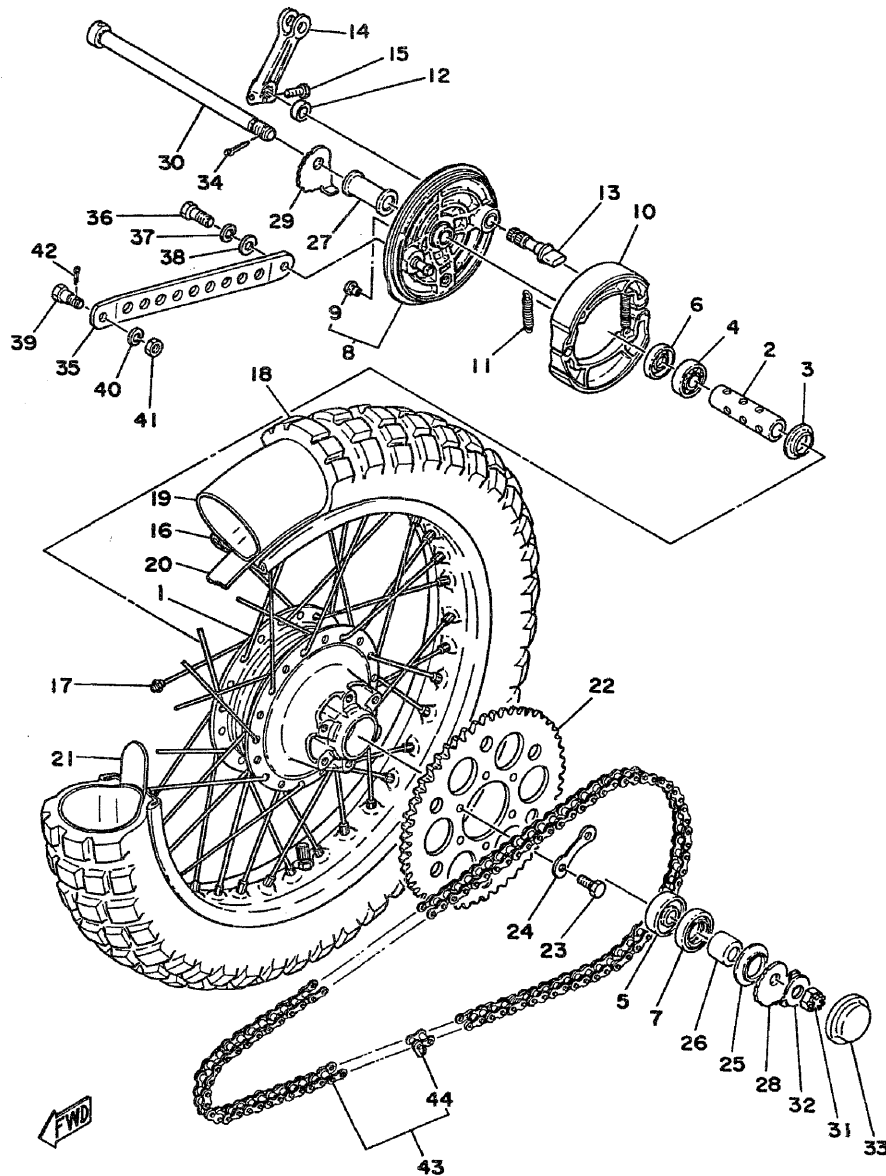
FIG. 24 FRONT WHEEL



REF. NO.	PART NO.	DESCRIPTION	Q'TY	REMARKS
29	1T1-25194-00	SPACER, bead	1	
30	2K5-25118-00	COVER, hub dust	1	
31	90387-12100	COLLAR	1	
32	90387-12095	COLLAR	1	
33	401-25181-01	AXLE, wheel	1	
34	90171-12015	NUT, castle	1	
35	478-25188-00	CAP	1	
36	92901-12600	WASHER, Plate	1	
37	91401-30025	PIN, cotter	1	
38	434-25171-01	BAR, tension	1	
39	90109-08234	BOLT	1	
40	90109-08380	BOLT	1	
41	92901-08100	WASHER, spring	2	
42	92901-08600	WASHER, Plate	2	
43	95301-08700	NUT	2	
44	91401-20012	PIN, cotter	2	
45	102-25137-00	RING, stop	1	
46	93210-14104	O-RING	1	

D2

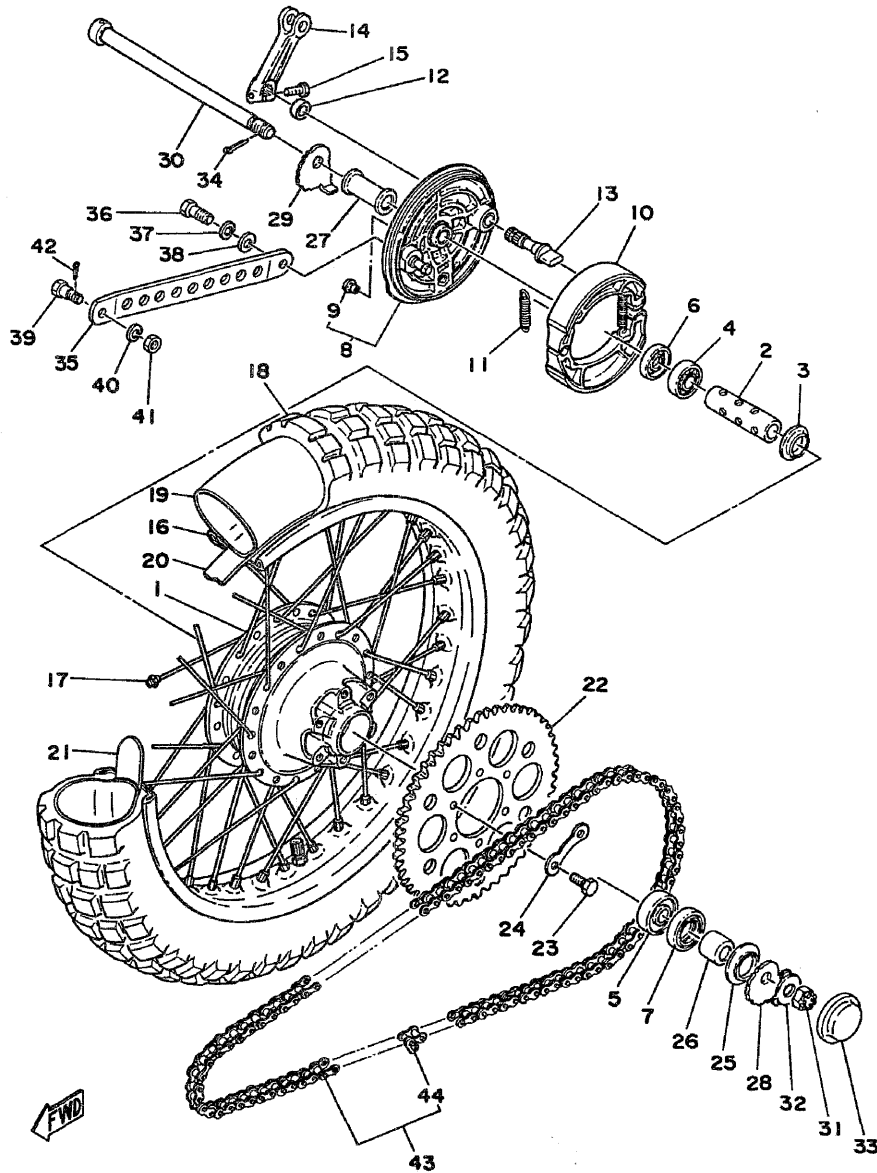
FIG. 25 REAR WHEEL



REF. NO.	PART NO.	DESCRIPTION	Q'TY	REMARKS
1	434-25311-01	HUB, rear	1	
2	434-25317-01	SPACER, bearing	1	
3	148-25115-00	FLANGE, spacer 1	1	
4	93306-20204	BEARING (B6202Z)	1	
5	93306-30203	BEARING (B6302Z)	1	
6	93104-22018	OIL SEAL	1	
7	93106-26005	OIL SEAL	1	
8	1N4-25026-00-35	BRAKE SHOE PLATE ASSY	1	
9	90480-10068	GROMMET	1	
10	437-25330-00	BRAKE SHOE COMP.	2	
11	90506-16036	SPRING, tension	2	
12	148-25359-00	SEAL, camshaft	1	
13	248-25351-00	CAMSHAFT	1	
14	434-25355-10	LEVER, camshaft	1	
15	90101-06291	BOLT	1	
16	94418-18154	RIM (1.85-18)	1	
17	434-25304-00	SPOKE SET, rear	1	
18	94140-18150	TIRE (4.00-18)	1	
19	94237-18120	TUBE (3.75-18)	1	
20	94340-18022	BAND, rim (4.00-18)	1	
21	1T2-25394-00	SPACER, bead	2	
22	539-25445-10-33	SPROCKET, driven (45T)	1	
23	90109-08377	BOLT	6	
24	214-25412-00	WASHER	3	
25	401-25367-00	COVER, hub dust	1	
26	90387-15489	COLLAR	1	
27	90387-15490	COLLAR	1	
28	525-25388-00	PULLER, chain f	1	

D3

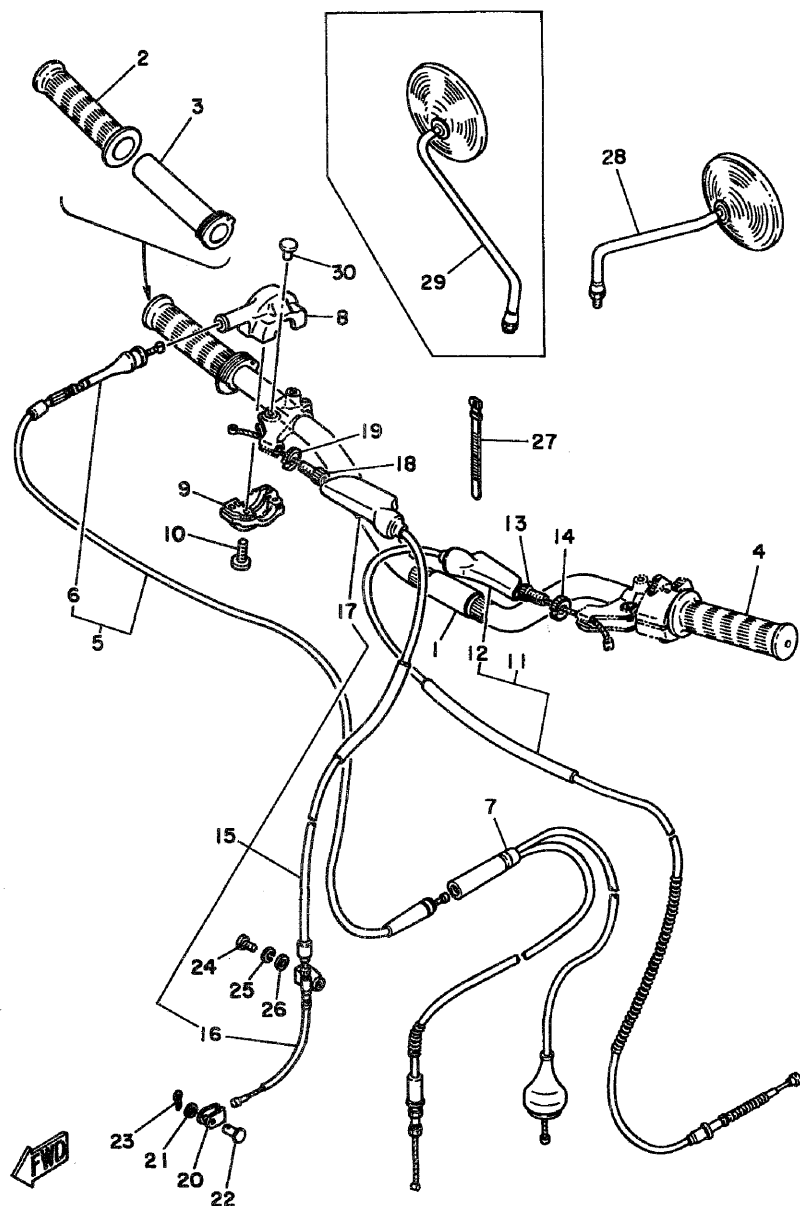
FIG. 25 REAR WHEEL



REF. NO.	PART NO.	DESCRIPTION	Q'TY	REMARKS
29	525-25389-00	PULLER, chain 2	1	
30	525-25381-00	AXLE, wheel	1	
31	90171-14020	NUT, castle	1	
32	90209-14136	WASHER	1	
33	521-25188-00	CAP	1	
34	91401-30030	PIN, cotter	1	
35	434-25371-01	BAR, tension	1	
36	90101-10254	BOLT	1	
37	92901-10100	WASHER, spring	1	
38	92901-10600	WASHER, plate	1	
39	90109-08063	BOLT	1	
40	92901-08100	WASHER, spring	1	
41	95301-08700	NUT	1	
42	91401-25020	PIN, cotter	1	
43	94524-28110	CHAIN, drive (DID428H 110L)	1	
44	94624-28001	JOINT, chain	1	

D4

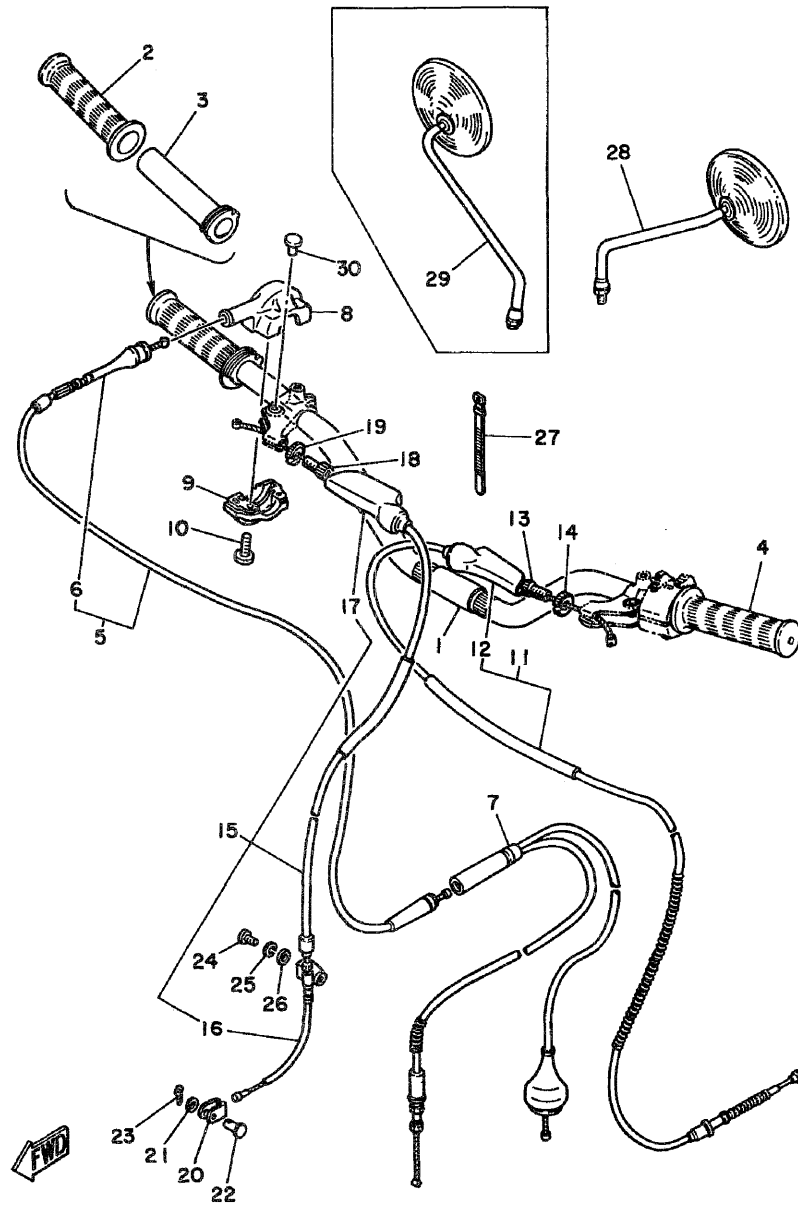
FIG. 26 HANDLEBAR.CABLE



REF. NO.	PART NO.	DESCRIPTION	Q'TY	REMARKS
1	525-26111-01	HANDLEBAR	1	
2	493-26242-00	GRIP (R.H)	1	
3	434-26243-10	TUBE, throttle guide	1	
4	493-26241-00	GRIP (L.H)	1	
5	525-26311-00	CABLE, throttle 1	1	
6	322-26316-00	.BOOT, throttle cable	1	
7	525-26312-00	CABLE, throttle 2	1	
8	493-26281-00	CAP, grip upper	1	
9	493-26282-00	CAP, grip lower	1	
10	98503-05020	SCREW, Pan head	2	
11	525-26335-00	CABLE, clutch	1	
12	382-26372-01	.COVER, handle lever	1	
13	90123-08046	BOLT	1	
14	90179-08148	NUT	1	
15	434-26341-04	CABLE, brake	1	
16	434-26342-01	.BOOT, cable	1	
17	382-26372-01	.COVER, handle lever	1	
18	90123-08046	BOLT	1	
19	90179-08148	NUT	1	
20	156-26347-00	JOINT, cable	1	
21	90201-08083	WASHER, Plate	1	
22	90240-08012	PIN, clevis	1	
23	91401-20012	PIN, cotter	1	
24	92501-06015	SCREW, Pan head	1	
25	92901-06100	WASHER, sPring	1	
26	92901-06600	WASHER, Plate	1	
27	168-83936-01	BAND, switch cord	1	
28	341-26290-51	MIRROR ASSY (L.H)	1	

D5

FIG. 26 HANDLEBAR.CABLE



REF. NO.	PART NO.	DESCRIPTION	Q'TY	REMARKS
29	341-26290-61	MIRROR ASSY (R.H)	1	AP
30	90338-09012	PLUG	1	

D6

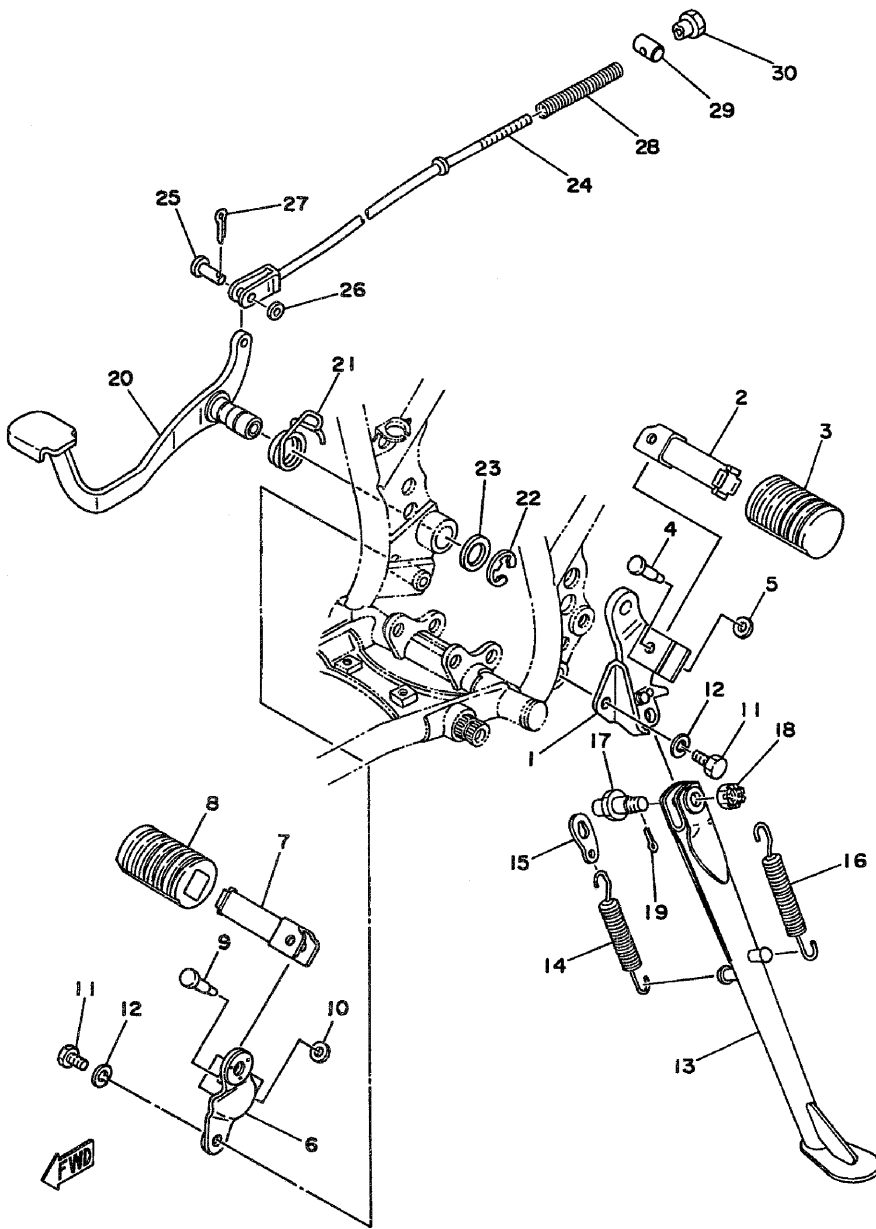
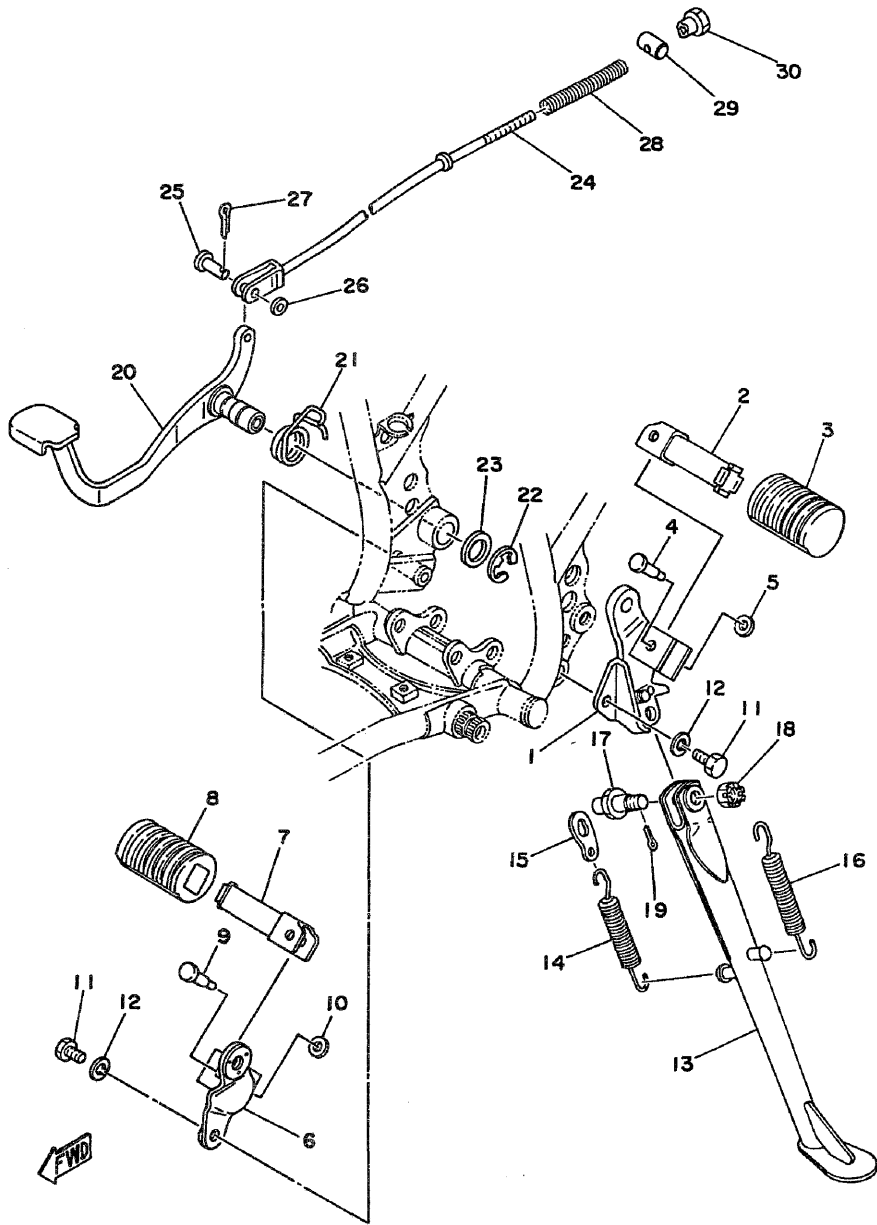


FIG. 27 STAND FOOTREST

REF. NO.	PART NO.	DESCRIPTION	Q'TY	REMARKS
1	1K6-27412-00	BRACKET, footrest 1	1	
2	214-27421-00	FOOTREST 2	1	
3	214-27413-00	COVER, footrest	1	
4	90243-08006	PIN	1	
5	90201-06042	WASHER, Plate	1	
6	1K6-27422-00	BRACKET, footrest 2	1	
7	214-27421-00	FOOTREST 2	1	
8	214-27413-00	COVER, footrest	1	
9	90243-08006	PIN	1	
10	90201-06042	WASHER, Plate	1	
11	97321-08016	BOLT	2	
12	92901-08100	WASHER, sPring	2	
13	1K6-27311-00	STAND, side	1	
14	90507-29019	SPRING, tension	1	
15	458-27315-00	LINK, side stand	1	
16	90507-29021	SPRING, tension	1	
17	90109-08417	BOLT	1	
18	95301-08900	NUT, slotted	1	
19	91401-20025	PIN, cotter	1	
20	1K6-27211-00-91	PEDAL, brake	1	uni chrome
21	90508-35264	SPRING, torsion	1	
22	93430-12022	CIRCLIP	1	
23	90201-17256	WASHER, Plate	1	
24	276-27231-00	ROD, brake	1	
25	90240-06006	PIN, clevis	1	
26	92901-06200	WASHER, Plain	1	
27	91401-25012	PIN, cotter	1	
28	90501-10245	SPRING, comPression	1	

D7

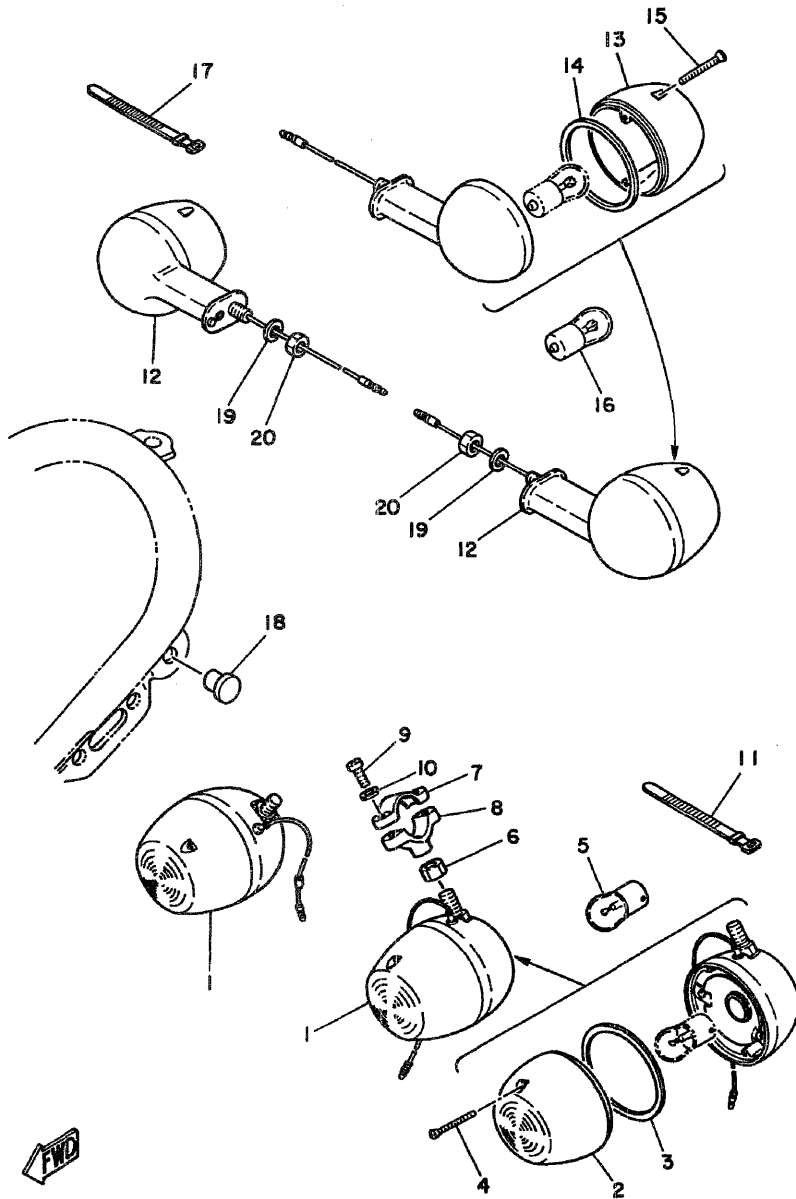
FIG. 27 STAND.FOOTREST



REF. NO.	PART NO.	DESCRIPTION	Q'TY	REMARKS
29	90249-12008	PIN	1	
30	90179-06176	NUT	1	

D8

FIG. 28 FLASHER LIGHT



REF. NO.	PART NO.	DESCRIPTION	Q'TY	REMARKS
1	308-83310-40-93	FRONT FLASHER LIGHT ASSY 1	2	chrome-Plated
2	183-83312-70	•LENS, flasher	1	
3	183-83313-70	•GASKET, flasher lens	1	
4	183-83333-71	•SCREW, lens fitting	2	
5	*	BULB (6V-21W)	2	LM
6	95303-08600	NUT	2	
7	275-83318-00	STAY, flasher 1	2	
8	437-83328-01	STAY, flasher 2	2	
9	92503-06015	SCREW, Pan head	4	
10	92901-06300	WASHER, internal tooth	4	
11	168-83936-01	BAND, switch cord	2	
12	308-83330-40-93	REAR FLASHER LIGHT ASSY 1	2	chrome-Plated
13	183-83312-70	•LENS, flasher	1	
14	183-83313-70	•GASKET, flasher lens	1	
15	183-83333-71	•SCREW, lens fitting	2	
16	*	BULB (6V-21W)	2	LM
17	168-83936-01	BAND, switch cord	3	
18	90338-09012	PLUG	2	
19	92901-08100	WASHER, sPring	2	
20	95303-08600	NUT	2	

D9

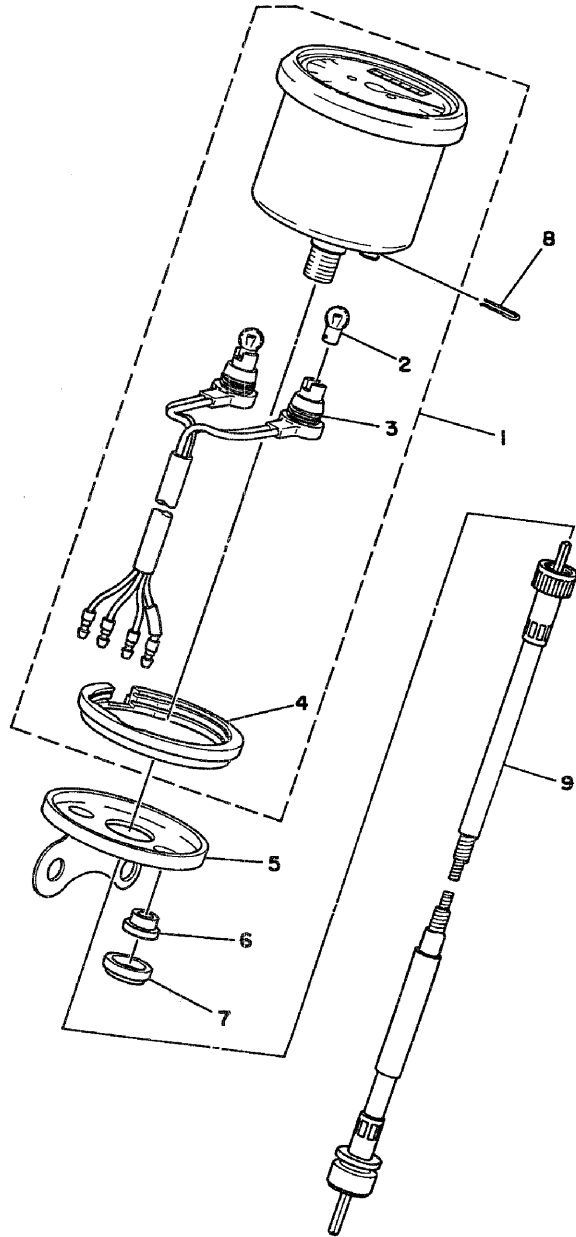


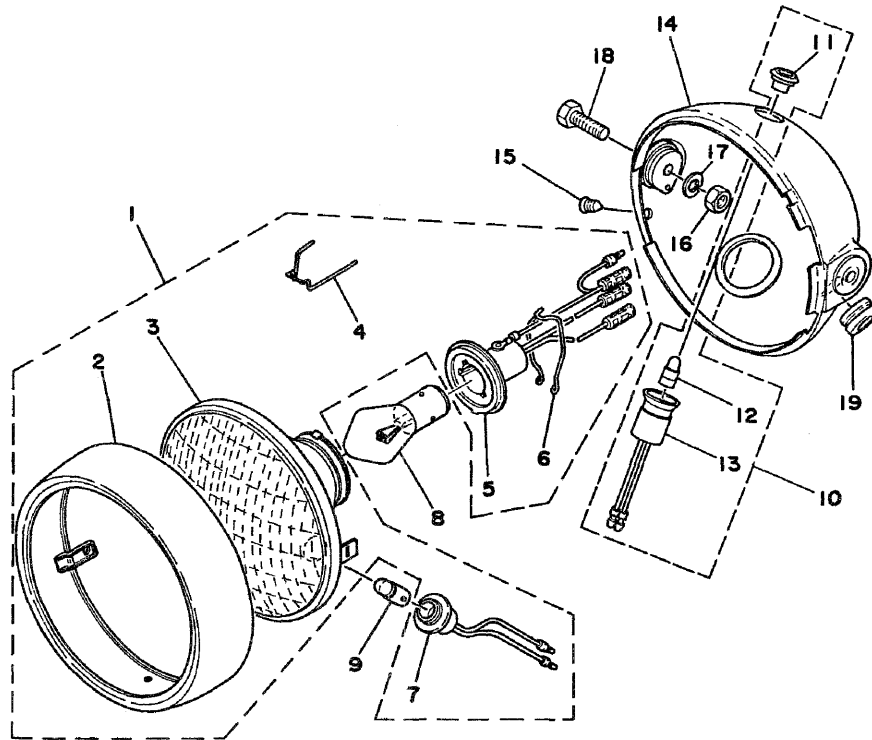
FIG. 29 SPEEDOMETER

REF. NO.	PART NO.	DESCRIPTION	Q'TY	REMARKS
1	516-83510-10	SPEEDOMETER ASSY	1	
2	122-83516-10	•BULB (6V-3W)	2	
3	461-83520-50	•SOCKET ASSY	1	
4	461-83523-00	•DAMPER	1	
5	516-83519-00	BRACKET, meter	1	
6	437-83523-00	DAMPER	2	
7	437-83524-00	WASHER, sPecial	2	
8	437-83525-00	CLIP	2	
9	516-83550-02	SPEEDOMETER CABLE ASSY	1	

FWD

D10

FIG. 30 HEADLIGHT



REF. NO.	PART NO.	DESCRIPTION	Q'TY	REMARKS
1	478-84103-45	HEADLIGHT UNIT ASSY	1	
2	308-84115-21	•RIM, headlight	1	
3	478-84120-45	•LENS ASSY	1	
4	308-84124-20	•SPRING, set	4	
5	314-84112-10	•SOCKET	1	
6	308-84135-21	•SPRING	1	
7	457-84146-85	•SOCKET, Pilot light	1	
8	*	BULB (6V-25/25W)	1	LM
9	*	BULB (6V-4W)	1	LM
10	308-84101-40	PILOT LIGHT ASSY	1	
11	306-84357-40	•BODY, Pilot light	1	
12	104-83517-10	•BULB (6V-1.5W)	1	
13	214-84150-61	•SOCKET CORD ASSY 2	1	
14	516-84130-40-36	BODY ASSY, headlight	1	clean white
15	90152-05005	SCREW, countersunk	1	
16	95301-08600	NUT	2	
17	92901-08100	WASHER, spring	2	
18	97304-08025	BOLT	2	
19	90480-16112	GROMMET	1	

FWO

D11

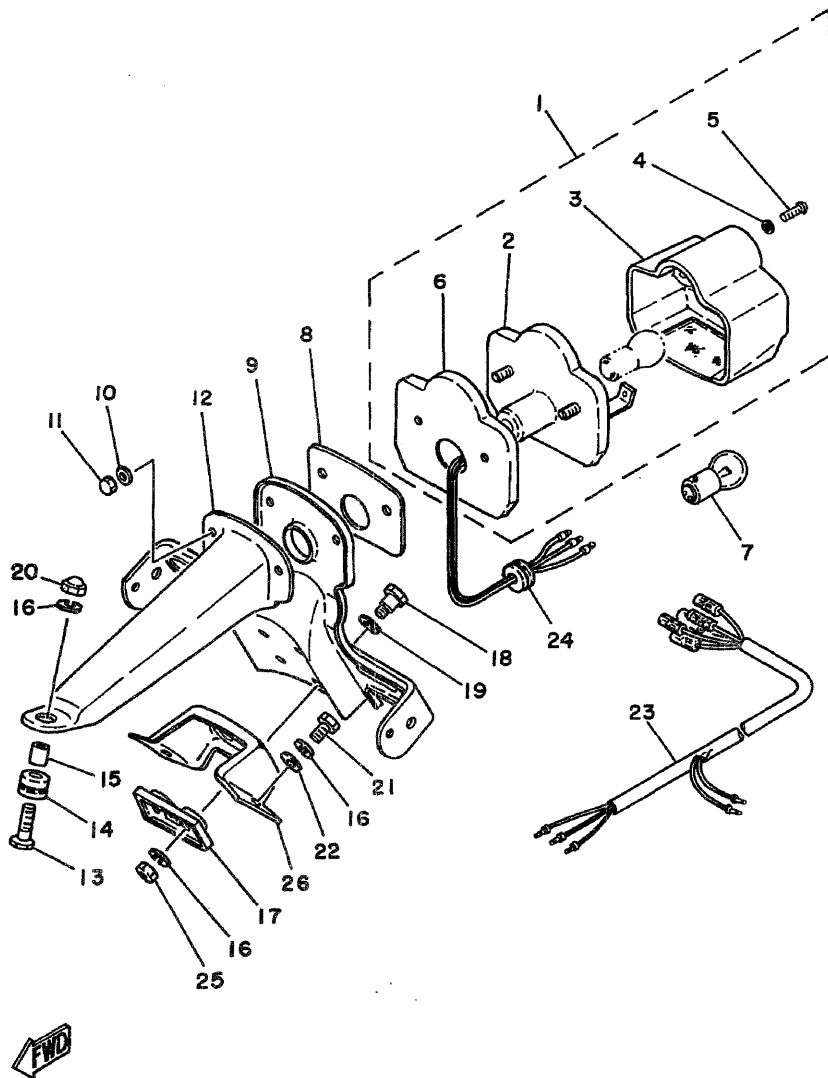


FIG. 31 TAILLIGHT

REF. NO.	PART NO.	DESCRIPTION	Q'TY	REMARKS
1	516-84510-41	TAILLIGHT UNIT ASSY	1	
2	516-84511-41	•BASE, taillight	1	
3	308-84521-40	•LENS, taillight	1	
4	124-84522-60	•WASHER	2	
5	98503-04014	•SCREW, Pan head	2	
6	124-84516-60	•COVER, taillight	1	
7	*	BULB (6V-21/5W)	1	LM
8	308-84547-40	DAMPER	1	
9	308-84551-40-20	BRACKET, licence	1	crystal silver
10	92903-06300	WASHER, internal tooth	2	
11	95303-06800	NUT, crown	2	
12	516-84558-40-20	STAY, licence bracket	1	crystal silver
13	97301-06025	BOLT	1	
14	90480-14102	GROMMET	1	
15	90387-07038	COLLAR	1	
16	92901-06100	WASHER, sPring	5	
17	214-84553-01	DAMPER	1	
18	90109-06005	BOLT	2	
19	92901-08200	WASHER, Plain	2	
20	95301-06800	NUT, crown	1	
21	97301-06016	BOLT	2	
22	92901-06600	WASHER, Plate	2	
23	541-84517-00	CORD, taillight	1	
24	90480-12067	GROMMET	1	
25	95301-06600	NUT	4	
26	541-84519-00-20	BRACKET, taillight	1	crystal silver

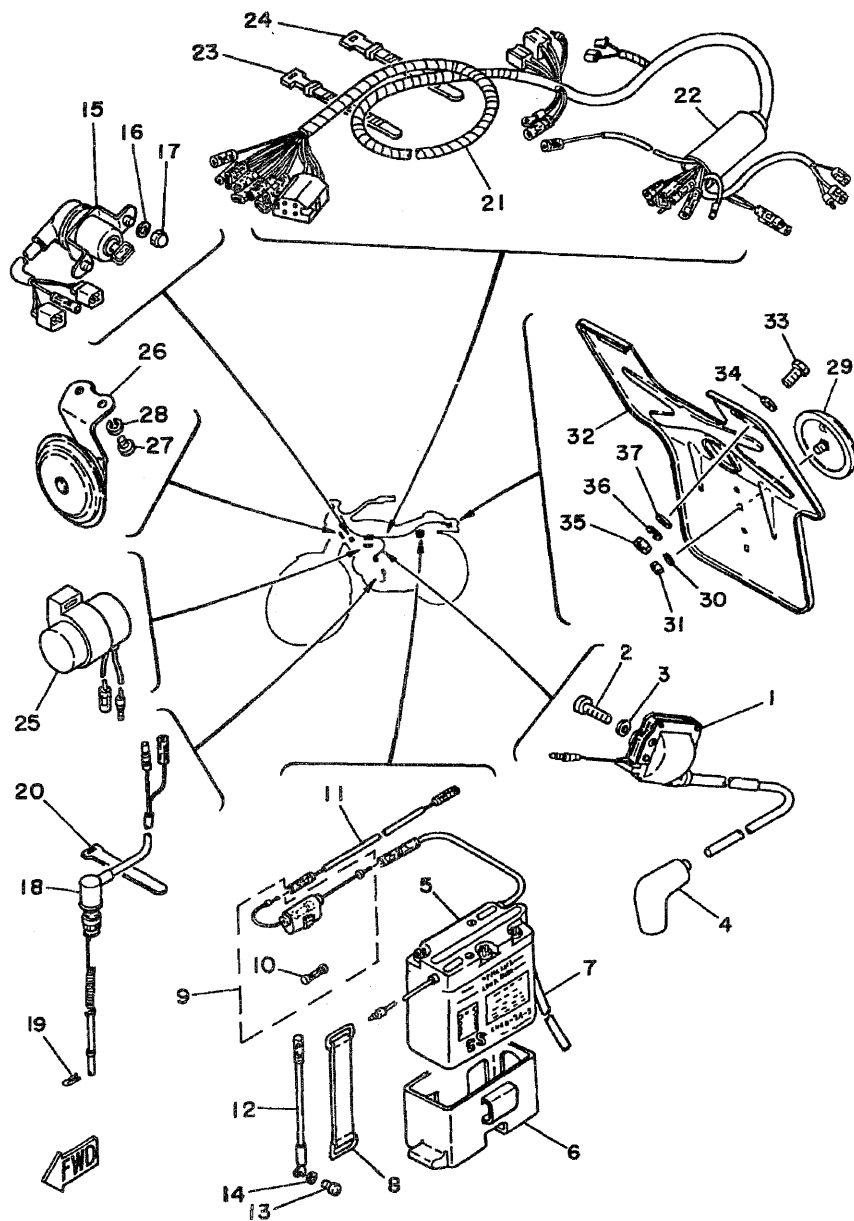
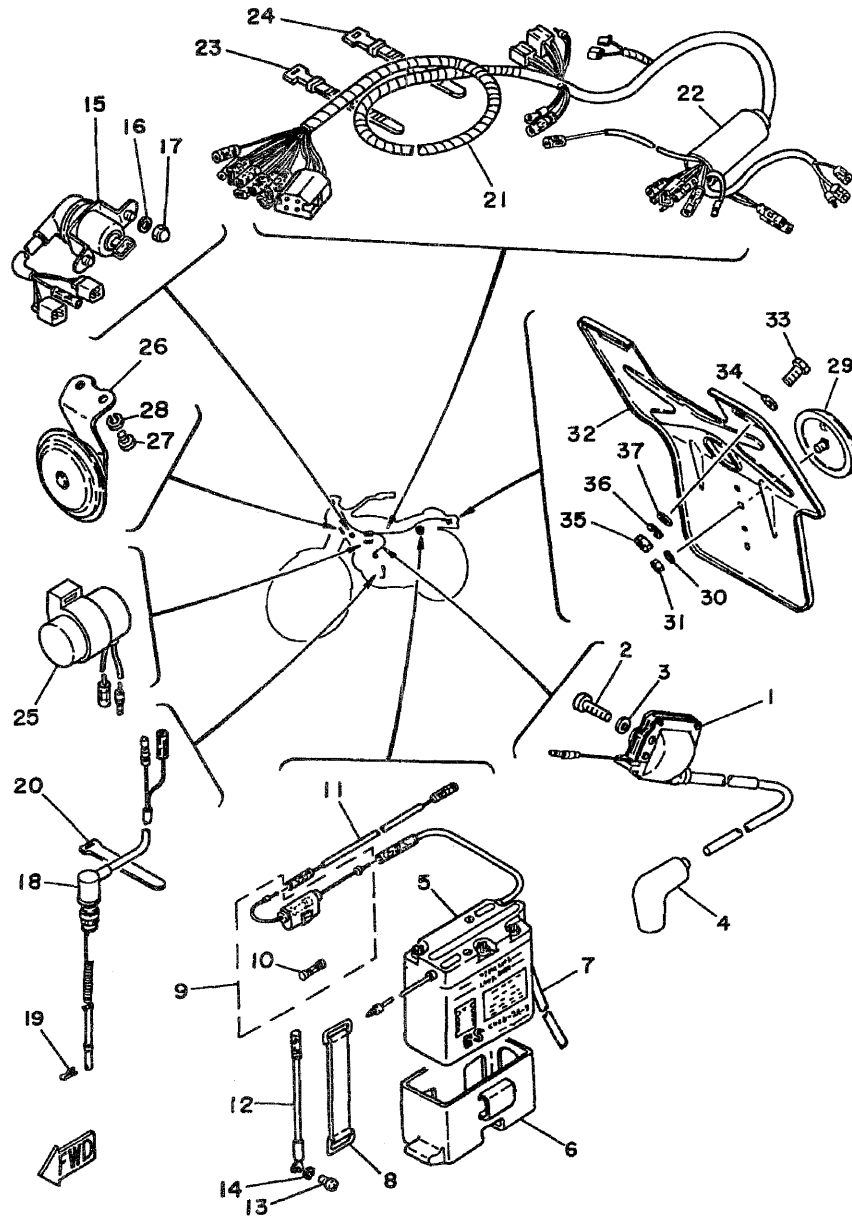


FIG. 32 ELECTRICAL 1

REF. NO.	PART NO.	DESCRIPTION	Q'TY	REMARKS
1	525-82310-40	IGNITION COIL ASSY	1	
2	92501-06025	SCREW, Pan head	2	
3	92901-06600	WASHER, Plate	2	
4	808-82370-10	PLUG CAP ASSY	1	
5	558-82110-11	BATTERY ASSY	1	UR
	437-82110-22	BATTERY ASSY	1	UR
6	461-82122-00	SEAT, battery	1	
7	90445-08286	HOSE	1	
8	120-82131-00	BAND, battery	1	
9	116-82150-00	FUSE HOLDER ASSY	1	
10	116-82151-00	FUSE (6V-10A)	1	
11	461-82115-00	WIRE, Plus lead	1	
12	173-84756-00	WIRE, earth lead	1	
13	92502-06008	SCREW, Pan head	1	
14	92902-06100	WASHER, Spring	1	
15	1K6-82508-45	MAIN SWITCH ASSY	1	
16	92901-06600	WASHER, Plate	2	
17	95301-06800	NUT, crown	2	
18	525-82530-01	STOP SWITCH ASSY	1	
19	90468-12007	CLIP	1	
20	341-26397-01	BAND	1	
21	1K6-82590-22	WIRE HARNESS ASSY	1	
22	256-82599-00	COVER, connector	1	
23	256-83936-00	BAND, switch cord	2	
24	168-83936-01	BAND, switch cord	1	
25	456-83350-40	FLASHER RELAY ASSY	1	
26	516-83371-11	HORN	1	
27	97301-06012	BOLT	2	

D13

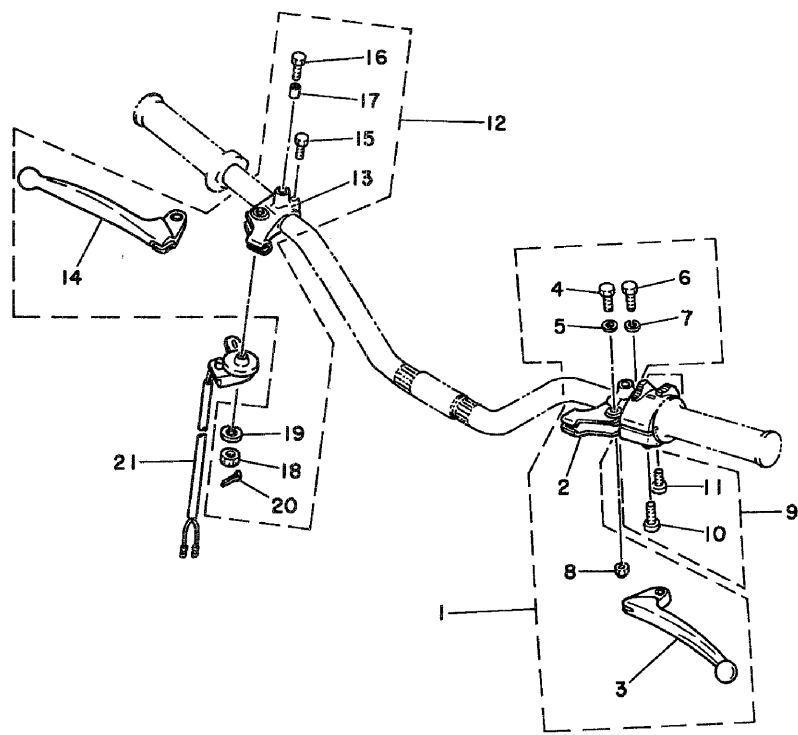
FIG. 32 ELECTRICAL 1



REF. NO.	PART NO.	DESCRIPTION	Q'TY	REMARKS
28	92901-06100	WASHER, sPring	2	
29	848-85131-01	REFLECTOR, rear 1	1	
30	92901-05100	WASHER, sPring	1	
31	95301-05600	NUT	1	
32	516-85132-40	BRACKET, reflector 1	1	
33	97301-06016	BOLT	2	
34	92901-06600	WASHER, Plate	2	
35	95301-06600	NUT	2	
36	92901-06100	WASHER, sPring	2	
37	92901-06200	WASHER, Plain	2	

D14

FIG. 33 HANDLE SWITCH•LEVER



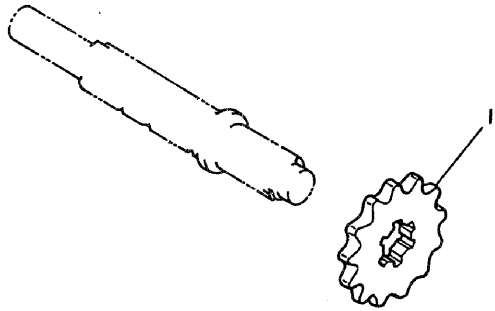
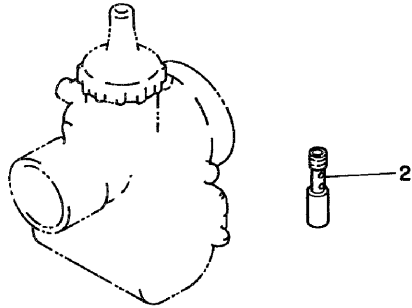
REF. NO.	PART NO.	DESCRIPTION	Q'TY	REMARKS
1	498-82910-11	LEVER HOLDER ASSY 1	1	
2	498-82911-00	•HOLDER, lever 1	1	
3	214-83912-00	•LEVER 1	1	
4	90109-06410	•BOLT	1	
5	90201-08083	•WASHER, Plate	1	
6	97301-06022	•BOLT	1	
7	92901-06100	•WASHER, sPrin8	1	
8	95601-06100	•NUT, u	1	
9	1K6-83972-00-98	SWITCH, handle 4	1	low gloss black
10	98501-05030	•SCREW, Pan head	1	
11	98501-05022	•SCREW, Pan head	1	
12	516-82920-90	LEVER HOLDER ASSY 2	1	
13	516-82921-30	•HOLDER, lever 2	1	
14	233-83922-30	•LEVER 2	1	
15	97303-06022	•BOLT	1	
16	90109-05197	•BOLT	1	
17	214-83913-00	•COLLAR, lever 1	1	
18	95302-05900	•NUT, slotted	1	
19	92901-05100	•WASHER, sPrin8	1	
20	91401-12015	•PIN, cotter	1	
21	232-83980-30	FRONT STOP SWITCH ASSY	1	

FWD

D15

FIG. 34 ALTERNATE (ENGINE)

REF. NO.	PART NO.	DESCRIPTION	Q'TY	REMARKS
1	174-17461-20	SPROCKET, drive (12T)	1	
2	558-14141-34	NOZZLE, main	1	

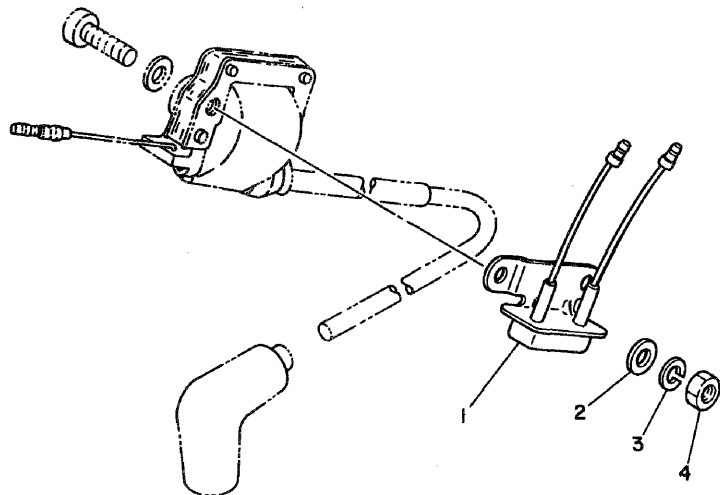


FWD

E2

FIG. 35 ALTERNATE (ELECTRICAL)

REF. NO.	PART NO.	DESCRIPTION	Q'TY	REMARKS
1	516-85370-10	RESISTOR ASSY	1	
2	90201-06064	WASHER, Plate	2	
3	92901-06100	WASHER, sPring	2	
4	95301-06600	NUT	2	



FWD

E3

FIG. 36 REPAIR KIT

REF. NO.	PART NO.	DESCRIPTION	Q'TY	REMARKS
1	444-11630-00	PISTON ASSY (STD)	1	
2	444-11631-00-97	•PISTON (STD)	1	
3	444-11610-00	•PISTON RING SET (STD)	1	
4	137-11633-00	•PIN, Piston	1	
5	93450-17025	•CIRCLIP	2	
6	444-11630-10	PISTON ASSY (1ST O/S)	1	
7	444-11635-00	•PISTON (1ST O/S 0.25MM)	1	
8	444-11610-10	•PISTON RING SET (1ST O/S)	1	
9	137-11633-00	•PIN, Piston	1	
10	93450-17025	•CIRCLIP	2	
11	444-11630-20	PISTON ASSY (2ND O/S)	1	
12	444-11636-00	•PISTON (2ND O/S 0.50MM)	1	
13	444-11610-20	•PISTON RING SET (2ND O/S)	1	
14	137-11633-00	•PIN, Piston	1	
15	93450-17025	•CIRCLIP	2	
16	444-11630-30	PISTON ASSY (3RD O/S)	1	
17	444-11637-00	•PISTON (3RD O/S 0.75MM)	1	
18	444-11610-30	•PISTON RING SET (3RD O/S)	1	
19	137-11633-00	•PIN, Piston	1	
20	93450-17025	•CIRCLIP	2	
21	444-11630-40	PISTON ASSY (4TH O/S)	1	
22	444-11638-00	•PISTON (4TH O/S 1.00MM)	1	
23	444-11610-40	•PISTON RING SET (4TH O/S)	1	
24	137-11633-00	•PIN, Piston	1	
25	93450-17025	•CIRCLIP	2	
26	248-11650-00	CONNECTING ROD ASSY	1	
27	248-11651-01	•ROD, connecting	1	

E4

FIG. 36 REPAIR KIT

REF. NO.	PART NO.	DESCRIPTION	Q'TY	REMARKS
28	525-11681-01	•PIN, crank 1	1	
29	93310-42231	•BEARING, cylindrical	1	
30	93310-216A3	•BEARING, cylindrical	1	
31	90209-22071	•WASHER	2	
32	1K6-W0001-00	GASKET KIT	1	
33	248-11181-00	•GASKET, cylinder head 1	1	
34	248-11351-00	•GASKET, cylinder	1	
35	90430-12038	•GASKET	1	
36	93210-11073	•O-RING	2	
37	525-15455-00	•GASKET, crankcase cover	1	
38	401-15451-00	•GASKET, crankcase cover	1	
39	402-15456-00	•GASKET, oil Pump cover 1	1	
40	93210-14104	•O-RING	1	
41	93210-18023	•O-RING	1	
42	93210-10096	•O-RING	1	
43	137-15353-00	•GASKET, drain	1	
44	314-13621-02	•GASKET, valve seat	1	
45	304-14184-00	•GASKET, float chamber	1	
46	152-14613-00	•GASKET, exhaust Pipe	1	
47	93210-19026	•O-RING	1	
48	126-13116-00	•GASKET, Pump case	1	
49	1K6-W0003-00	OIL SEAL KIT	1	
50	93102-25061	•OIL SEAL	1	
51	93103-28011	•OIL SEAL	1	
52	93104-14004	•OIL SEAL	1	
53	93102-26042	•OIL SEAL	1	
54	93109-12012	•OIL SEAL	1	
55	93101-12060	•OIL SEAL	1	

E5

FIG. 36 REPAIR KIT

REF. NO.	PART NO.	DESCRIPTION	Q'TY	REMARKS
56	93101-17062	.OIL SEAL	1	
57	93101-10002	.OIL SEAL	1	

E6

NUMERICAL INDEX

PART NO.	GRID NO.	PART NO.	GRID NO.
1K6-W0001-00	E 5	525-11681-01	B 3
1K6-W0003-00	E 5		E 5
539-11111-00	B 2	1G0-13101-00	B 6
1K6-11127-00	B 2	126-13116-00	B 6
576-11127-00	B 2		E 5
1K6-11161-00	B 2	137-13137-00-03	B 6
434-11161-00	B 2	137-13137-00-05	B 6
1K6-11162-00	B 2	137-13137-00-10	B 6
248-11181-00	B 2	137-13138-01	B 6
	E 5	278-13169-00	B 6
539-11311-00	B 2	525-13174-00	B 6
248-11351-00	B 2	525-13175-01	B 6
	E 5	137-13176-00	B 6
525-11400-01	B 3	353-13178-00	B 6
525-11412-00	B 3	402-13552-00	B 6
525-11422-00	B 3	525-13565-01	B 7
444-11610-00	B 3	539-13610-00	B 7
	E 4	314-13613-01	B 7
444-11610-10	B 3	539-13616-00	B 7
	E 4	314-13621-02	B 7
444-11610-20	B 3		E 5
	E 4	1K6-14101-00	B 8
444-11610-30	B 3	304-14112-30	B 8
	E 4	500-14115-00	B 8
444-11610-40	B 3	164-14116-06	B 8
	E 4	493-14122-00	B 8
444-11630-00	E 4	525-14123-00	B 8
444-11630-10	E 4	360-14124-20	B 9
444-11630-20	E 4	193-14126-00	B 8
444-11630-30	E 4	276-14131-00	B 8
444-11630-40	E 4	493-14133-00	B 8
444-11631-00-97	B 3	174-14134-00	B 8
	E 4	156-14135-00	B 9
444-11631-00-98	B 3	137-14136-00	B 8
		164-14137-00	B 8
137-11633-00	B 3	152-14138-00	B 9
	E 4	558-14141-30	B 8
444-11635-00	B 3	558-14141-34	E 2
	E 4	260-14142-25	B 8
444-11636-00	B 3	137-14143-18	B 8
	E 4	137-14143-20	B 8
444-11637-00	B 3	137-14143-22	B 8
	E 4	214-14147-00	B 8
444-11638-00	B 3	354-14147-00	B 8
	E 4	558-14147-00	B 8
248-11650-00	E 4	525-14158-00	B 9
248-11651-01	B 3	802-14161-00	B 9
	E 4	525-14169-00	B 9

PART NO.	GRID NO.	PART NO.	GRID NO.
304-14171-00	B 9		
132-14173-00	B 9		
152-14174-00	B 9		
539-14181-08	B 8		
304-14184-00	B 8		
	E 5		
525-14185-00	B 8		
137-14186-01	B 8		
353-14190-18	B 8		
127-14195-00	B 8		
183-14196-00	B 9		
313-14197-00	B 9		
304-14261-00	B 9		
525-14411-00	B 7		
1K6-14412-00	B 7		
1K6-14419-00	B 7		
1K6-14437-00	B 7		
525-14451-01	B 7		
525-14453-00	B 7		
525-14610-02	B10		
152-14613-00	B10		
	E 5		
525-14681-00	B10		
525-14718-00-36	B10		
1K6-14729-00	B10		
565-14747-00	B10		
1K6-14753-01	B10		
525-15111-01	B11		
525-15121-01	B11		
304-15128-00	B11		
328-15316-00	B11		
401-15317-00	B11		
137-15353-00	C 3		
	E 5		
525-15362-01	B12		
498-15371-00	B11		
	B12		
1K6-15411-00	B12		
1K6-15416-00	B12		
437-15419-01	B11		
1K6-15431-00	B12		
525-15441-01	B14		
401-15449-00	B11		
401-15451-00	B12		
	E 5		
525-15455-00	B12		
	E 5		
402-15456-00	B12		

NUMERICAL INDEX

PART NO.	GRID NO.	PART NO.	GRID NO.
402-15456-00	E 5	401-18334-00	C 4
525-15620-01	B13	525-18511-00	C 3
525-15621-01-91	B13	525-18512-00	C 3
315-15641-00	B13	525-18513-00	C 3
525-15651-00	B13	257-18531-00	C 3
248-15654-00	B13	363-18535-00	C 3
525-15660-01	B13	1G8-18540-00	C 3
1W1-15666-00	B13	525-18561-00	C 3
257-15668-00	B13	1K6-21110-40-35	C 5
401-15676-00	B13	461-21170-00	C 7
525-16111-00	B14	525-21471-00-39	C 5
525-16150-00	B14	493-21510-00-36	C 6
122-16164-00	B14	539-21544-00	C 7
525-16301-01	B14	541-21610-00-36	C 6
525-16321-00	B14	539-21617-00	C 6
137-16325-70	B14	1K6-21711-11	C 7
525-16351-00	B14	371-21714-00	C 7
137-16356-00	B14	461-21717-00	C 7
1W1-16357-00	B14	461-21730-01	C 7
525-16371-02	B14	1N4-21731-00-33	C 7
525-16380-00	B14	525-21751-00	C 8
525-17121-00	B15	434-21771-00	C 8
525-17131-00	B15	1K6-21787-00	C 7
525-17151-00	B15	525-21797-00	C 8
525-17161-00	B15	1N4-22110-00-35	C 9
525-17211-00	B15	401-22127-00	C 9
525-17221-00	B15	401-22128-01	C 9
525-17231-01	B15	525-22141-00	C 9
525-17241-01	B15	437-22151-00	C 9
525-17251-00	B15	434-22153-00-91	C 9
525-17261-00	B15	493-22178-01	C 9
525-17411-00	B15	434-22179-00-93	C 9
137-17417-00-05	B13	525-22210-00	C 9
525-17421-00	B15	1N4-22311-00-33	C 9
164-17427-00-06	B15	541-23101-00	C11
174-17461-20	E 2	2K5-23111-00	C11
174-17461-40	C 2	146-23114-00	C11
174-17461-50	B15	437-23117-01	C11
174-17461-60	C 2	315-23118-50	C11
1G8-17471-00	B15	122-23119-01	C11
525-18101-01	C 4	541-23121-00-93	C12
401-18102-00	C 4	525-23124-00	C11
525-18111-00-93	C 4	525-23126-00	C11
525-18140-00	C 3	122-23129-00	C11
401-18151-00	C 4	541-23131-01-93	C12
401-18152-01	C 4	525-23136-00	C11
401-18155-01	C 4	525-23141-01	C11
401-18178-00	C 4	535-23144-00	C11

PART NO.	GRID NO.
137-23145-01	C11
315-23146-50	C11
315-23156-50	C11
214-23158-00	C12
525-23163-00	C12
315-23167-51	C12
525-23170-00	C11
535-23171-00	C11
535-23183-01	C11
461-23308-00	C 7
525-23318-01	C12
525-23319-00	C10
539-23319-01	C 7
541-23341-00	C11
539-23345-00	C11
322-23346-00	C11
322-23356-00	C11
322-23357-00	C11
122-23408-10	C10
122-23411-00	C10
156-23411-00	C10
122-23412-00	C10
156-23412-00	C10
122-23416-00	C10
525-23435-00	C10
1E6-23441-10-38	C10
164-23462-00	C10
525-24110-00-09	C13
554-24161-00	C13
278-24181-00	C13
434-24183-00	C13
1K6-24240-30	C13
434-24500-03	C13
132-24518-00	C13
434-24521-00	C13
132-24522-00	C13
137-24523-00	C13
447-24524-00	C13
447-24525-00	C13
132-24531-00	C13
434-24532-00	C13
434-24576-00	C13
322-24611-02	C13
525-24710-00	C14
525-24711-00	C14
509-24724-00	C14
509-24738-01	C14
2Y0-24748-00	C14

NUMERICAL INDEX

PART NO.	GRID NO.	PART NO.	GRID NO.
1N4-25016-00-35	C15	434-26341-04	D 5
1N4-25026-00-35	D 3	434-26342-01	D 5
345-25104-01	C15	156-26347-00	D 5
248-25111-00-35	C15	382-26372-01	D 5
148-25115-00	D 3	341-26397-01	D13
2K5-25118-00	D 2	1K6-27211-00-91	D 7
437-25130-00	C15	276-27231-00	D 7
248-25135-11	C15	1K6-27311-00	D 7
109-25136-00	C15	458-27315-00	D 7
102-25137-00	D 2	1K6-27412-00	D 7
248-25138-11	C15	214-27413-00	D 7
183-25149-00	C15	214-27421-00	D 7
434-25151-00	C15	1K6-27422-00	D 7
401-25155-11	C15	525-28100-10	C 5
137-25159-00	C15	461-28171-00	C 5
434-25171-01	D 2	434-28172-00	C 5
401-25181-01	D 2	193-81145-20	C13
478-25188-00	D 2	164-81246-21	B 5
521-25188-00	D 4	539-81300-10	B 5
1T1-25194-00	D 2	539-81309-10	B 5
434-25304-00	D 3	461-81312-10	B 5
434-25311-01	D 3	539-81313-10	B 5
109-25315-00	C15	434-81321-10	B 5
434-25317-01	D 3	207-81326-10	B 5
437-25330-00	D 3	109-81328-11	B 5
248-25351-00	D 3	207-81331-10	B 5
434-25355-10	D 3	434-81332-10	B 5
148-25359-00	D 3	110-81346-21	B 5
401-25367-00	D 3	525-81350-10	B 5
434-25371-01	D 4	353-81970-63	B 5
525-25381-00	D 4	437-82110-22	D13
525-25388-00	D 3	558-82110-11	D13
525-25389-00	D 4	461-82115-00	D13
1T2-25394-00	D 3	461-82122-00	D13
214-25412-00	D 3	120-82131-00	D13
539-25445-10-33	D 3	116-82150-00	D13
525-26111-01	D 5	116-82151-00	D13
493-26241-00	D 5	525-82310-40	D13
493-26242-00	D 5	808-82370-10	D13
434-26243-10	D 5	1K6-82508-45	D13
493-26281-00	D 5	525-82530-01	D13
493-26282-00	D 5	1K6-82590-22	D13
341-26290-51	D 5	256-82599-00	D13
341-26290-61	D 6	498-82910-11	D15
525-26311-00	D 5	498-82911-00	D15
525-26312-00	D 5	516-82920-90	D15
322-26316-00	D 5	516-82921-30	D15
525-26335-00	D 5	308-83310-40-93	D 9

PART NO.	GRID NO.	PART NO.	GRID NO.
308-83311-30	D 9	183-83312-70	D 9
183-83313-70	D 9	183-83313-70	D 9
275-83318-00	D 9	437-83328-01	D 9
308-83330-40-93	D 9	308-83330-40-93	D 9
183-83333-71	D 9	456-83350-40	D13
516-83371-11	D13	516-83510-10	D10
516-83510-10	D10	122-83516-10	D10
104-83517-10	D11	516-83519-00	D10
461-83520-50	D10	437-83523-00	D10
437-83523-00	D10	461-83523-00	D10
437-83524-00	D10	437-83524-00	D10
437-83525-00	D10	516-83550-02	D10
516-83550-02	D10	214-83912-00	D15
214-83912-00	D15	214-83913-00	D15
233-83922-30	D15	168-83936-01	D 5
168-83936-01	D 5	256-83936-00	D13
256-83936-00	D13	1K6-83972-00-98	D15
1K6-83972-00-98	D15	232-83980-30	D15
232-83980-30	D15	308-84101-40	D11
308-84101-40	D11	478-84103-45	D11
478-84103-45	D11	314-84112-10	D11
314-84112-10	D11	260-84114-40	D11
260-84114-40	D11	308-84115-21	D11
308-84115-21	D11	478-84120-45	D11
478-84120-45	D11	308-84124-20	D11
308-84124-20	D11	516-84130-40-36	D11
516-84130-40-36	D11	308-84135-21	D11
308-84135-21	D11	456-84146-45	D11
456-84146-45	D11	457-84146-85	D11
457-84146-85	D11	214-84150-61	D11
214-84150-61	D11	306-84357-40	D11
306-84357-40	D11	516-84510-41	D12
516-84510-41	D12	516-84511-41	D12
516-84511-41	D12	260-84514-40	D12
260-84514-40	D12	124-84516-60	D12
124-84516-60	D12	541-84517-00	D12
541-84517-00	D12	541-84519-00-20	D12
541-84519-00-20	D12	308-84521-40	D12
308-84521-40	D12		

PART NO.	GRID NO.	PART NO.	GRID NO.
124-84522-60	D12	308-84547-40	D12
308-84547-40	D12	308-84551-40-20	D12
308-84551-40-20	D12	214-84553-01	D12
214-84553-01	D12	516-84558-40-20	D12
516-84558-40-20	D12	173-84756-00	D13
173-84756-00	D13	848-85131-01	D14
848-85131-01	D14	516-85132-40	D14
516-85132-40	D14	516-85370-10	E 3
516-85370-10	E 3	90101-06278	C15
90101-06278	C15	90101-06291	D 3
90101-06291	D 3	90101-06304	C14
90101-06304	C14	90101-10254	D 4
90101-10254	D 4	90105-08024	C 5
90105-08024	C 5	90105-08120	C 5
90105-08120	C 5	90105-10037	C 5
90105-10037	C 5	90105-14060	C10
90105-14060	C10	90109-05197	D15
90109-05197	D15	90109-06001	C 3
90109-06001	C 3	90109-06005	D12
90109-06005	D12	90109-06410	D15
90109-06410	D15	90109-08063	D 4
90109-08063	D 4	90109-08234	D 2
90109-08234	D 2	90109-08377	D 3
90109-08377	D 3	90109-08380	D 2
90109-08380	D 2	90109-08417	D 7
90109-08417	D 7	90109-14385	C 3
90109-14385	C 3	90116-06016	B10
90116-06016	B10	90116-08064	B 2
90116-08064	B 2	90116-08261	C11
90116-08261	C11	90122-06001	C 8
90122-06001	C 8	90123-08046	D 5
90123-08046	D 5	90149-08096	C 4
90149-08096	C 4	90149-12097	B14
90149-12097	B14	90152-05005	D11
90152-05005	D11	90159-05011	B14
90159-05011	B14	90170-08029	C 4
90170-08029	C 4	90170-08176	C12
90170-08176	C12	90170-12060	B14
90170-12060	B14	90170-12181	B 5
90170-12181	B 5	90171-12015	D 2
90171-12015	D 2	90171-14020	D 4
90171-14020	D 4	90179-06013	C 8
90179-06013	C 8	90179-06034	C 5
90179-06034	C 5	90179-06176	D 8
90179-06176	D 8	90179-08025	B 2
90179-08025	B 2	90179-08148	D 5
90179-08148	D 5	90179-12197	B14
90179-12197	B14		

NUMERICAL INDEX

PART NO.	GRID NO.	PART NO.	GRID NO.
90179-12244	B14	90340-12005	B11
90179-16018	C 2	90386-18028	C 9
90179-25033	C10	90387-06388	C 8
90185-08054	C 5	90387-07038	D12
90185-12046	C 9	90387-07391	C 6
90201-06042	D 7	90387-08258	B10
90201-06064	E 3	90387-12095	D 2
90201-06067	B 7	90387-12100	D 2
	C 6	90387-15489	D 3
	C 8	90387-15490	D 3
90201-07076	C15	90387-202A0	C 2
90201-08083	D 5	90387-20488	B 3
	D15	90389-12002	C 9
90201-08113	B10	90430-04004	B 6
90201-08624	B 6	90430-12038	B11
90201-12362	B 2		E 5
90201-12541	B13	90430-18067	C 8
90201-12575	C 4	90430-35122	C13
90201-12593	B 5	90445-05278	B 6
90201-14217	B14	90445-07177	B11
90201-17256	D 7		B12
90201-17543	B14	90445-08286	D13
90201-17545	B15	90445-09073	C13
90201-20266	B15	90445-09111	C 8
90201-20269	C15	90445-09117	C 8
90202-06010	B10	90445-09238	C13
90207-06009	C 9	90460-43053	B 7
90208-12015	B14	90460-49058	B 7
90209-08050	C 5	90461-10016	B12
90209-08098	C13	90462-05005	B 7
90209-14136	D 4	90465-10074	B11
90209-16133	B15	90467-08003	C 8
90209-22071	B 3		C13
	E 5	90467-10008	C 8
90215-08014	C 4	90468-02033	B 6
90215-12007	B14	90468-10050	C 8
90215-16020	C 2	90468-12007	D13
90240-06006	D 7	90468-26048	B13
90240-08012	D 5	90480-01141	C 7
90243-08006	D 7	90480-10068	C15
90249-12008	D 8		D 3
90250-06013	C 3	90480-10091	B 7
90280-05013	B 3	90480-12053	C 7
90282-05005	B 3	90480-12067	D12
90338-09012	D 6	90480-14102	C 6
	D 9		C 8
90338-10063	C 3		D12
90338-20023	C 3	90480-16112	D11

NUMERICAL INDEX

PART NO.	GRID NO.	PART NO.	GRID NO.
90480-25135	C13	92501-06045	B11
90501-10187	C 5	92501-06050	B12
90501-10245	D 7	92501-06055	B11
90501-12081	B13	92501-06065	B11
90501-12083	C 3	92501-08010	B11
90501-20125	B14	92502-06008	D13
90506-09009	C 4	92503-06015	D 9
90506-09112	C 3	92701-06012	B 5
90506-16036	D 3	92901-04100	B 5
90506-16150	C15		B 8
90507-29019	D 7	92901-04600	B 7
90507-29021	D 7	92901-05100	B 5
90508-14132	B14		B 6
90508-25273	C 4		C 3
90508-26041	B13		C 7
90508-32140	C 9		C 9
90508-35264	D 7		D14
90560-12138	C15		D15
90560-17147	B14	92901-05200	C 7
91311-08020	C12	92901-05600	B 5
91316-08025	B13		C 9
91401-12015	D15	92901-06100	B 7
91401-16015	B 9		B10
91401-20012	D 2		C 6
	D 5		C 7
	D 7		C 8
91401-20025	D 7		C 9
91401-25012	D 4		C12
91401-25020	D 4		C14
91401-30025	D 2		D 5
91401-30030	D 4		D12
91401-30035	C 7		D14
91401-30040	C 5		D15
91701-05055	C 8		E 3
91810-02014	B11		E 5
	B12	92901-06200	D 7
91810-19020	B11		D14
92501-06012	B15	92901-06300	D 9
	C 7	92901-06600	B 7
	C 9		C 6
	C12		C 7
92501-06015	B11		C14
	C 8		D 5
	D 5		D12
92501-06018	C12		D13
92501-06020	B12		D14
92501-06025	B12	92901-08100	B10
	D13		C 5
92501-06035	B12		C12

PART NO.	GRID NO.	PART NO.	GRID NO.
92901-08100	C13	93210-19026	E 5
	D 2	93306-20204	D 3
	D 4	93306-20402	B15
	D 7	93306-20517	B 3
	D 9	93306-30103	C15
	D11	93306-30203	D 3
92901-08200	D12	93306-30303	B15
92901-08600	C 5	93306-30405	B 3
	D 2	93310-216A3	B 3
92901-10100	C 5		E 5
	C11	93310-42231	B 3
	D 4		E 5
92901-10600	D 4	93311-31515	B15
92901-12100	B 5	93318-21305	B15
92901-12600	D 2	93410-17037	B15
92902-06100	D13	93410-20009	C15
92903-06300	D12	93410-20038	B15
93101-10002	B 6	93410-30012	B13
	E 6	93430-08006	B 6
93101-12060	C 4		C 3
	E 5		C 4
93101-17062	B13	93430-08007	B13
	B10	93430-10015	C 9
93102-18008	C15	93430-12022	D 7
93102-25061	B 3	93440-13042	B15
	E 5	93440-15012	B13
93102-26042	B15		B15
	E 5	93450-17025	B 4
93103-28011	B 3		E 4
	E 5	93501-04011	C10
93104-07003	C15	93503-16010	B14
93104-14004	B14		C10
	E 5	93505-16006	C 3
93104-22018	D 3	93505-32002	B 6
93105-47007	C15	93507-32009	B13
93106-26005	D 3	93603-12007	B11
93109-12012	C 4	93603-22028	B 6
	E 5	93604-22050	C 3
93210-10096	B14	93700-06005	C 9
	C 7	94127-21151	C15
	C14	94140-18150	D 3
93210-11073	D 5	94227-21031	C15
	D12	94237-18120	D 3
93210-14104	B12	94327-21024	C15
	D 2	94340-18022	D 3
	E 5	94416-21165	C15
93210-18023	B 3	94418-18154	D 3
	E 5	94524-28110	D 4
93210-19026	B10		

NUMERICAL INDEX

PART NO.	GRID NO.	PART NO.	GRID NO.
94624-28001	D 4	98501-05012	C 3
94701-00044	B 2	98501-05016	B 6
95301-05600	B 6	98501-05020	B 5
	D14	98501-05022	D15
95301-06600	B10	98501-05025	C 9
	D12	98501-05030	D15
	D14	98501-05035	B 5
	E 3	98503-04014	D12
95301-06800	D12	98503-05020	D 5
	D13	98901-04008	B 6
95301-08600	D11	98903-06010	B10
95301-08700	D 2		
	D 4		
95301-08900	D 7		
95302-05900	D15		
95303-06800	D12		
95303-08600	D 9		
95601-06100	C15		
	D15		
	C10		
95601-08100	C10		
95821-08035	C10		
97301-06012	B14		
	D13		
97301-06014	C14		
97301-06016	B 7		
	C 6		
	D12		
	D14		
97301-06018	C 6		
97301-06022	D15		
97301-06025	B 7		
	C 6		
	D12		
97301-06045	C 7		
97301-08016	C13		
97301-08018	C 5		
97301-08030	B10		
97301-08035	B10		
97303-06022	D15		
97304-08025	D11		
97313-08055	C10		
97321-06020	C 4		
97321-08016	D 7		
97602-03108	B 7		
98501-04008	B 7		
98501-04016	B 8		
98501-05008	C 9		
98501-05010	C 7		

PARTS NAME INDEX

DESCRIPTION	GRID NO.
ABSORBER 1	B 2
*	B 2
ABSORBER 2	B 2
ABSORBER 3	B 2
*	B 2
ARM, tensioner	C 9
AXLE, drive	B15
AXLE, main (11T)	B15
AXLE, wheel	D 2
*	D 4
BALL	B 6
*	B13
*	B14
*	C 3
*	C10
*	C10
BAND	D13
BAND, battery	D13
BAND, rim (2.75-21)	C15
BAND, rim (4.00-18)	D 3
BAND, switch cord	D 5
*	D 9
*	D 9
*	D13
*	D13
BAR, shift fork Guide 1	C 3
BAR, shift fork Guide 2	C 3
BAR, tension	D 2
*	D 4
BASE, magneto	B 5
BASE, taillight	D12
BATTERY ASSY	D13
*	D13
BEARING (B6202Z)	D 3
BEARING (B6204JRC3)	B15
BEARING (B6205)	B 3
BEARING (B6301Z)	C15
BEARING (B6302Z)	B15
*	D 3
BEARING (B6304C3)	B 3
BEARING, cylindrical	B 3
*	B 3
*	B15
*	B15
*	E 5
*	E 5
BODY ASSY, headlight	D11
BODY, caP	C 8

PARTS NAME INDEX

DESCRIPTION	GRID NO.
BODY, caP	C13
BODY, float chamber 1	B 8
BODY, Pilot light	D11
BOLT	B 7
*	B 7
*	B10
*	B10
*	B10
*	B13
*	B14
*	C 3
*	C 3
*	C 4
*	C 5
*	C 6
*	C 6
*	C 6
*	C 7
*	C10
*	C12
*	C13
*	C14
*	C14
*	C15
*	D 2
*	D 2
*	D 3
*	D 3
*	D 4
*	D 4
*	D 5
*	D 5
*	D 7
*	D 7
*	D11
*	D12
*	D12
*	D12
*	D13
*	D13
*	D14
*	D15
*	D15
*	D15
BOLT 1	C11
BOLT 2	C11
BOLT, caP	C11
BOLT, flange	C10
BOLT, stud	B 2

PARTS NAME INDEX

DESCRIPTION	GRID NO.
BOLT, stud	B10
*	C11
BOLT, washer based	C 5
*	C 5
*	C 5
*	C10
BOLT, wing	C 8
BOOT, cable	D 5
BOOT, throttle cable	D 5
BOSS, clutch	B14
BOSS, kick crank	B13
BOX COMP.	C 7
BRACKET, fender	C 6
BRACKET, footrest 1	D 7
BRACKET, footrest 2	D 7
BRACKET, licence	D12
BRACKET, lower	C11
BRACKET, meter	D10
BRACKET, reflector 1	D14
BRACKET, seat	C14
*	C14
BRACKET, taillight	D12
BRAKE SHOE COMP.	C15
*	D 3
BRAKE SHOE PLATE ASSY	C15
*	D 3
BREATHER	B11
*	B12
BULB (6V-1.5W)	D11
BULB (6V-21/5W)	D12
BULB (6V-21W)	D 9
*	D 9
BULB (6V-25/25W)	D11
BULB (6V-3W)	D10
BULB (6V-4W)	D11
BUSH	C 9
*	C 9
*	C15
CABLE, brake	D 5
CABLE, clutch	D 5
CABLE, throttle 1	D 5
CABLE, throttle 2	D 5
CAMSHAFT	C15
*	D 3
CAP	B 9
*	D 2
*	D 4
CAP, cleaner case 1	B 7

PARTS NAME INDEX

DESCRIPTION	GRID NO.
CAP, grip lower	D 5
CAP, grip upper	D 5
CAP, plunger	B 9
CARBURETOR ASSY 1	B 8
CASE, air cleaner 1	B 7
CASE, chain	C 9
CHAIN, drive (DID428H 110L)	D 4
CIRCLIP	B 4
*	B 6
*	B 13
*	B 13
*	B 13
*	B 15
*	B 15
*	B 15
*	C 3
*	C 4
*	C 9
*	C 11
*	C 15
*	D 7
*	E 4
*	E 4
*	E 4
*	E 4
CLAMP	B 5
*	B 7
*	B 11
*	B 12
CLAMP, hose	B 7
*	B 7
CLIP	B 6
*	B 6
*	B 8
*	B 13
*	C 8
*	C 8
*	C 8
*	C 13
*	D 10
*	D 13
CLIP, oil seal	C 11
*	C 11
CLIP, plunger	B 9
CLUTCH ASSY	B 14
CLUTCH, meter	C 15

PARTS NAME INDEX

DESCRIPTION	GRID NO.
COIL, lighting 1	B 5
COIL, source	B 5
COLLAR	B 3
*	B 10
*	B 10
*	C 2
*	C 6
*	C 8
*	D 2
*	D 2
*	D 3
*	D 3
*	D 12
COLLAR 1	C 7
COLLAR, lever 1	D 15
CONDENSER 2	B 5
CONNECTING ROD ASSY	E 4
CONTACT BREAKER ASSY	B 5
CORD, taillight	D 12
COVER, ball race 2	C 10
COVER, connector	D 13
COVER, crankcase 1	B 12
COVER, crankcase 3	B 12
COVER, footrest	D 7
*	D 7
COVER, handle lever	D 5
*	D 5
COVER, hub dust	D 2
*	D 3
COVER, oil pump	B 12
COVER, plunger cap	B 9
COVER, shifter 1	B 11
COVER, side (L.H.)	C 7
COVER, side 3	C 7
COVER, single seat	C 14
COVER, spring	B 13
COVER, taillight	D 12
COVER, tool box	C 5
COVER, upper 1	C 12
COVER, upper 2	C 12
CRANK 1	B 3
CRANK 2	B 3
CRANKCASE 1	B 11
CRANKCASE 2	B 11
CRANKSHAFT ASSY	B 3
CROWN, handle	C 10
CUP, filter	C 13
CYLINDER COMP., front fork	C 11

PARTS NAME INDEX

DESCRIPTION	GRID NO.
CYLINDER 1	B 2
DAMPER	D 10
*	D 10
*	D 12
*	D 12
DAMPER, battery box	C 7
DAMPER, engine mount 1	B 11
DAMPER, locating 1	C 13
DAMPER, locating 3	C 13
DAMPER, muffler	B 10
*	B 10
DAMPER, seat	C 14
DUCT	B 7
ELEMENT, air cleaner	B 7
EMBLEM 1	C 13
EMBLEM 7	C 7
EMBLEM, protector	B 10
EXHAUST PIPE ASSY 1	B 10
FLANGE, spacer	C 15
FLANGE, spacer 1	D 3
FLASHER RELAY ASSY	D 13
FLOAT	B 8
FLYWHEEL MAGNETO ASSY	B 5
FOOTREST 2	D 7
*	D 7
FORK, shift 1	C 3
FORK, shift 2	C 3
FORK, shift 3	C 3
FRAME COMP	C 5
FRONT FENDER COMP.	C 6
FRONT FLASHER LIGHT ASSY 1	D 9
FRONT FORK ASSY	C 11
FRONT STOP SWITCH ASSY	D 15
FUEL COCK ASSY 1	C 13
FUEL TANK COMP.	C 13
FUSE (6V-10A)	D 13
FUSE HOLDER ASSY	D 13
GASKET	B 6
*	B 8
*	B 11
*	C 8
*	C 11
*	C 12
*	C 12
*	C 12
*	C 13
*	C 13
*	C 13
*	C 13
*	E 5

PARTS NAME INDEX

DESCRIPTION	GRID NO.
GASKET KIT	E 5
GASKET, crankcase cover	B12
*	B12
*	E 5
*	E 5
GASKET, cylinder	B 2
*	E 5
GASKET, cylinder head 1	B 2
*	E 5
GASKET, drain	C 3
*	E 5
GASKET, drain Plug	C11
GASKET, exhaust Pipe	B10
*	E 5
GASKET, filter	C13
GASKET, flasher lens	D 9
*	D 9
GASKET, float chamber	B 8
*	E 5
GASKET, oil Pump cover 1	B12
*	E 5
GASKET, Pump case	B 6
*	E 5
GASKET, valve seat	B 7
*	E 5
GEAR, drive	C15
GEAR, kick (27T)	B13
GEAR, kick idle (25T)	B13
GEAR, meter	C15
GEAR, Primary drive (19T)	B14
GEAR, Pump drive (28T)	B 6
GEAR, 1st wheel (34T)	B15
GEAR, 2nd Pinion (13T)	B15
GEAR, 2nd wheel (32T)	B15
GEAR, 3rd wheel (30T)	B15
GEAR, 3rd/4th Pinion (16T/19T)	B15
GEAR, 4th wheel (27T)	B15
GEAR, 5th Pinion (23T)	B15
GEAR, 5th wheel (23T)	B15
GEAR, 6th Pinion (26T)	B15
GEAR, 6th wheel (20T)	B15
GRAPHIC SET	C13
GRIP (L.H)	D 5
GRIP (R.H)	D 5
GROMMET	B 7
*	C 6
*	C 7
*	C 7

PARTS NAME INDEX

DESCRIPTION	GRID NO.
GROMMET	C 8
*	C13
*	C15
*	D 3
*	D11
*	D12
*	D12
GUARD, chain	C 9
GUIDE, spring	C11
HANDLEBAR	D 5
HEAD, cylinder 1	B 2
HEADLIGHT UNIT ASSY	D11
HINGE	C 8
HOLDER	B 9
*	B11
HOLDER, axle	C12
HOLDER, cable 1	C12
*	C12
HOLDER, cable 2	C10
*	C12
HOLDER, clutch cable	B14
HOLDER, handle upper	C10
HOLDER, kick gear	B13
HOLDER, lever 1	D15
HOLDER, lever 2	D15
HOLDER, oil Pipe	B 6
HORN	D13
HOSE	B 6
*	B11
*	B12
*	C 8
*	C 8
*	C13
*	C13
*	D13
HUB, front	C15
HUB, rear	D 3
IGNITION COIL ASSY	D13
JET, main (#090)	B 8
JET, main (#100)	B 8
JET, main (#110)	B 8
JET, Pilot (#25.0)	B 8
JOINT, air cleaner 1	B 7
JOINT, cable	D 5
JOINT, carburetor	B 7
JOINT, chain	D 4
KEY, straight	B 3
KEY, woodruff	B 3

PARTS NAME INDEX

DESCRIPTION	GRID NO.
KICK AXLE ASSY	B13
KICK CRANK ASSY	B13
KNOB, side cover 1	C 7
KNOB, tool box	C 5
LENS ASSY	D11
LENS, flasher	D 9
*	D 9
LENS, taillight	D12
LEVER HOLDER ASSY 1	D15
LEVER HOLDER ASSY 2	D15
LEVER 1	D15
LEVER 2	D15
LEVER, camshaft	D 3
LEVER, camshaft 1	C15
LEVER, cock	C13
LEVER, shift 3	C 4
LEVER, shift 4	C 4
LINK, side stand	D 7
LUBRICATOR	B 5
MAIN SWITCH ASSY	D13
METAL, worm shaft outer	B 6
MIRROR ASSY (L.H)	D 5
MIRROR ASSY (R.H)	D 6
NEEDLE	B 8
NEEDLE VALVE ASSY	B 8
NIPPLE, grease	C 9
NOZZLE	B 6
NOZZLE, main	B 8
*	E 2
NUT	B 2
*	B 5
*	B 6
*	B10
*	B10
*	B14
*	B14
*	B14
*	C 2
*	C 4
*	C 5
*	C 8
*	C10
*	C11
*	C12
*	C13
*	D 2
*	D 4
*	D 5

PARTS NAME INDEX

DESCRIPTION	GRID NO.
NUT	D 5
*	D 8
*	D 9
*	D 9
*	D 11
*	D 12
*	D 14
*	D 14
*	E 3
NUT, cable adjusting	B 9
NUT, castle	D 2
*	D 4
NUT, crown	D 12
*	D 12
*	D 13
NUT, self-locking	C 5
*	C 9
NUT, slotted	D 7
*	D 15
NUT, u	C 10
*	C 15
*	D 15
O-RING	B 3
*	B 8
*	B 8
*	B 8
*	B 10
*	B 11
*	B 12
*	B 14
*	D 2
*	E 5
*	E 5
*	E 5
*	E 5
*	E 5
OIL PUMP ASSY	B 6
OIL SEAL	B 3
*	B 3
*	B 6
*	B 13
*	B 14
*	B 15
*	C 4
*	C 4
*	C 11
*	C 11
*	C 15

PARTS NAME INDEX

DESCRIPTION	GRID NO.
OIL SEAL	C 15
*	C 15
*	D 3
*	D 3
*	E 5
*	E 5
*	E 5
*	E 5
*	E 5
*	E 5
*	E 5
OIL SEAL KIT	E 5
PEDAL, brake	D 7
PEDAL, shift	C 4
PILOT LIGHT ASSY	D 11
PIN	D 7
*	D 7
*	D 8
PIN, clevis	C 8
*	D 5
*	D 7
PIN, cotter	B 9
*	C 5
*	C 7
*	D 2
*	D 2
*	D 4
*	D 4
*	D 5
*	D 7
*	D 7
D 15	D 15
PIN, crank 1	B 3
*	E 5
PIN, dowel	B 6
*	B 11
*	B 11
*	B 11
*	B 12
*	C 3
PIN, float	B 8
PIN, Piston	B 3
*	E 4
*	E 4
*	E 4
*	E 4
*	E 4
*	E 4
*	E 4
*	E 4

PARTS NAME INDEX

DESCRIPTION	GRID NO.
PIN, straight	C 3
PIPE	B 7
*	B 9
*	B 9
PISTON (STD)	B 3
*	B 3
*	E 4
PISTON (1ST O/S 0.25MM)	B 3
*	E 4
PISTON (2ND O/S 0.50MM)	B 3
*	E 4
PISTON (3RD O/S 0.75MM)	B 3
*	E 4
PISTON (4TH O/S 1.00MM)	B 3
*	E 4
PISTON ASSY (STD)	E 4
PISTON ASSY (1ST O/S)	E 4
PISTON ASSY (2ND O/S)	E 4
PISTON ASSY (3RD O/S)	E 4
PISTON ASSY (4TH O/S)	E 4
PISTON RING SET (STD)	B 3
*	E 4
PISTON RING SET (1ST O/S)	B 3
*	E 4
PISTON RING SET (2ND O/S)	B 3
*	E 4
PISTON RING SET (3RD O/S)	B 3
*	E 4
PISTON RING SET (4TH O/S)	B 3
*	E 4
PISTON, front fork	C 11
PLATE, adjusting	B 6
PLATE, clutch 2	B 14
PLATE, cover	B 15
PLATE, friction	B 14
PLATE, lever fitting	C 13
PLATE, Pressure 1	B 14
PLATE, side 1	C 3
PLATE, thrust 2	B 14
PLATE, timing	B 5
PLUG	C 3
*	C 3
*	D 6
*	D 9
PLUG CAP ASSY	D 13
PLUG, drain	C 11
PLUG, oil level	B 12

PARTS NAME INDEX

DESCRIPTION	GRID NO.
PLUG, screw	B 8
PLUG, sPark (NGK B-7ES)	B 2
PLUG, straight screw	B11
PLUNGER, starter	B 9
PRIMARY DRIVEN GEAR COMP.(74T	B14
PROTECTOR, engine	C 5
PROTECTOR, muffler 1	B10
PULLER, chain 1	D 3
PULLER, chain 2	D 4
PUSH LEVER ASSY	B14
RACE, ball 1	C10
*	C10
RACE, ball 2	C10
*	C10
REAR ARM COMP.	C 9
REAR FENDER COMP.	C 6
REAR FLASHER LIGHT ASSY 1	D 9
RECTIFIER ASSY	B 5
REED VALVE ASSY	B 7
REED, valve	B 7
REFLECTOR, rear 1	D14
RESISTOR ASSY	E 3
RIM (1.60-21)	C15
RIM (1.85-18)	D 3
RIM, headlight	D11
RING, rubber	B11
RING, stop	D 2
ROD, brake	D 7
ROD, connecting	B 3
*	E 4
ROD, Push 1	B14
ROD, Push 2	B14
ROLLER, shift lever	C 4
ROTOR ASSY	B 5
SCREW	B14
*	C 4
SCREW 1	C13
SCREW, air adjusting	B 8
SCREW, bind	B 6
*	B10
SCREW, cable adjusting	B 9
SCREW, countersunk	D11
SCREW, flat head	B 5
SCREW, lens fitting	D 9
*	D 9
SCREW, Pan head	B 5
*	B 5
*	B 5

PARTS NAME INDEX

DESCRIPTION	GRID NO.
SCREW, Pan head	B 5
*	B 5
*	B 6
*	B 7
*	B 8
*	B11
*	B11
*	B11
*	B11
*	B11
*	B11
*	B12
*	B12
*	B12
*	B12
*	B12
*	B12
*	B15
*	C 3
*	C 7
*	C 7
*	C 8
*	C 9
*	C 9
*	C 9
*	C12
*	C12
*	D 5
*	D 5
*	D 9
*	D12
*	D13
*	D13
*	D15
*	D15
SCREW, Pan head with washer	B 7
SCREW, throttle	B 8
SCREW, with washer	B14
SEAL, camshaft	C15
*	C15
*	D 3
SEAL, dust	C11
SEAL, Guard	C 9
*	C 9
SEAL, steering	C10
SEAT, battery	D13
SEAT, sPring	B 8
SHAFT, Pivot	C 9
SHAFT, shift 2	C 4
SHAFT, steering	C11
SHAFT, worm	B 6

PARTS NAME INDEX

DESCRIPTION	GRID NO.
SHIFT CAM ASSY	C 3
SHIFT SHAFT ASSY	C 4
SHIFT SHAFT ASSY 2	C 4
SHIM	C 4
*	C 9
SHIM (0.3T)	B 6
SHIM (0.5T)	B 6
*	B13
SHIM (1.0T)	B 6
SHIM 1 (0.6T)	B15
SHOCK ABSORBER ASSY, rear	C 9
SIDE COVER ASSY 3	C 7
SILENCER, exhaust	B10
STNGLE SEAT ASSY	C14
SOCKET	D11
SOCKET ASSY	D10
SOCKET CORD ASSY 2	D11
SOCKET, Pilot light	D11
SPACER	B13
*	B14
*	C11
*	C15
SPACER, bead	D 2
*	D 3
SPACER, bearing	D 3
SPACER, engine mount	B11
SPEEDOMETER ASSY	D10
SPEEDOMETER CABLE ASSY	D10
SPOKE SET, front	C15
SPOKE SET, rear	D 3
SPRING	D11
SPRING, air adjusting	B 8
SPRING, check ball	B 6
SPRING, compression	B13
*	B14
*	C 3
*	C 5
*	D 7
SPRING, front fork	C11
SPRING, Plunger	B 9
SPRING, set	D11
SPRING, tension	C 3
*	C 4
*	C15
*	D 3
*	D 7
*	D 7
SPRING, throttle stop	B 8

PARTS NAME INDEX

DESCRIPTION	GRID NO.
SPRING, throttle valve	B 8
SPRING, torsion	B13
*	B14
*	C 4
*	C 9
*	D 7
SPROCKET, drive (12T)	E 2
SPROCKET, drive (14T)	C 2
SPROCKET, drive (15T)	B15
SPROCKET, drive (16T)	C 2
SPROCKET, driven (45T)	D 3
STAND, side	D 7
STAY, flasher 1	D 9
STAY, flasher 2	D 9
STAY, licence bracket	D12
STEERING LOCK ASSY	C10
STOP SWITCH ASSY	D13
STOPPER	B13
STOPPER LEVER ASSY	C 3
STOPPER, reed valve	B 7
SWITCH, handle 4	D15
TAILLIGHT UNIT ASSY	D12
TANK, oil	C 8
TENSIONER	C 9
TIRE (2.75-21)	C15
TIRE (4.00-18)	D 3
TOOL KIT	C 5
TOP, mixing chamber	B 9
TUBE (2.75-21)	C15
TUBE (3.75-18)	D 3
TUBE, inner 1	C11
TUBE, outer 1	C11
TUBE, outer 2	C11
TUBE, throttle guide	D 5
VALVE	C13
VALVE, throttle 1	B 8
WASHER	B 3
*	B15
*	C 5
*	C13
*	D 3
*	D 4
*	D12
*	E 5
WASHER, conical spring	B14
WASHER, finish	C 9
WASHER, internal tooth	D 9
*	D12

PARTS NAME INDEX

DESCRIPTION	GRID NO.
WASHER, lock	B14
*	C 2
*	C 4
WASHER, needle valve	B 8
WASHER, oil seal	C11
*	C11
WASHER, Plain	C 7
*	D 7
*	D12
*	D14
WASHER, Plate	B 2
*	B 5
*	B 5
*	B 6
*	B 7
*	B 7
*	B 7
*	B10
*	B10
*	B10
*	B13
*	B14
*	B14
*	B15
*	B15
*	C 4
*	C 5
*	C 6
*	C 6
*	C 7
*	C 7
*	C 7
*	C 8
*	C 9
*	C 9
*	C 9
*	C11
*	C12
*	C12
*	C 8
*	C 9
*	C14
*	C15
*	C15
*	D 2
*	D 2
*	D 4
*	D 5
*	D 5
*	D 7
*	D 7
*	D 7
*	D12
*	D13
*	D13
*	D14

PARTS NAME INDEX

DESCRIPTION	GRID NO.
WASHER, Plate	D15
*	E 3
WASHER, special	D10
WASHER, spring	B 5
*	B 5
*	B 5
*	B 5
*	B 6
*	B 7
*	B 8
*	B10
*	B10
*	C 3
*	C 5
*	C 5
*	C 5
*	C 6
*	C 6
*	C 6
*	C 7
*	C 7
*	C 7
*	C 7
*	C 8
*	C 9
*	C 9
*	C 9
*	C11
*	C12
*	C12
*	C13
*	C14
*	D 2
*	D 4
*	D 4
*	D 5
*	D 7
*	D 9
*	D11
*	D12
*	D13
*	D14
*	D14
*	D14
*	D15
*	D15
*	E 3

PARTS NAME INDEX

DESCRIPTION	GRID NO.
WASHER, wave	C13
WIRE HARNESS ASSY	D13
WIRE, earth lead	D13
WIRE, Plus lead	D13

M16