

# MODEL YZ125B

[www.legends-yamaha-enduros.com](http://www.legends-yamaha-enduros.com)

## NOTICE

ALL PART NUMBERS CONTAINED IN THIS CATALOGUE ARE COMPRISED OF TEN DIGITS. WHEN ORDERING, PLEASE ADD TWO ZEROS TO THE END OF EACH PART NUMBER REQUIRED TO CONVERT THE TEN DIGITS INTO THE NEW TWELVE DIGIT NUMBERS.

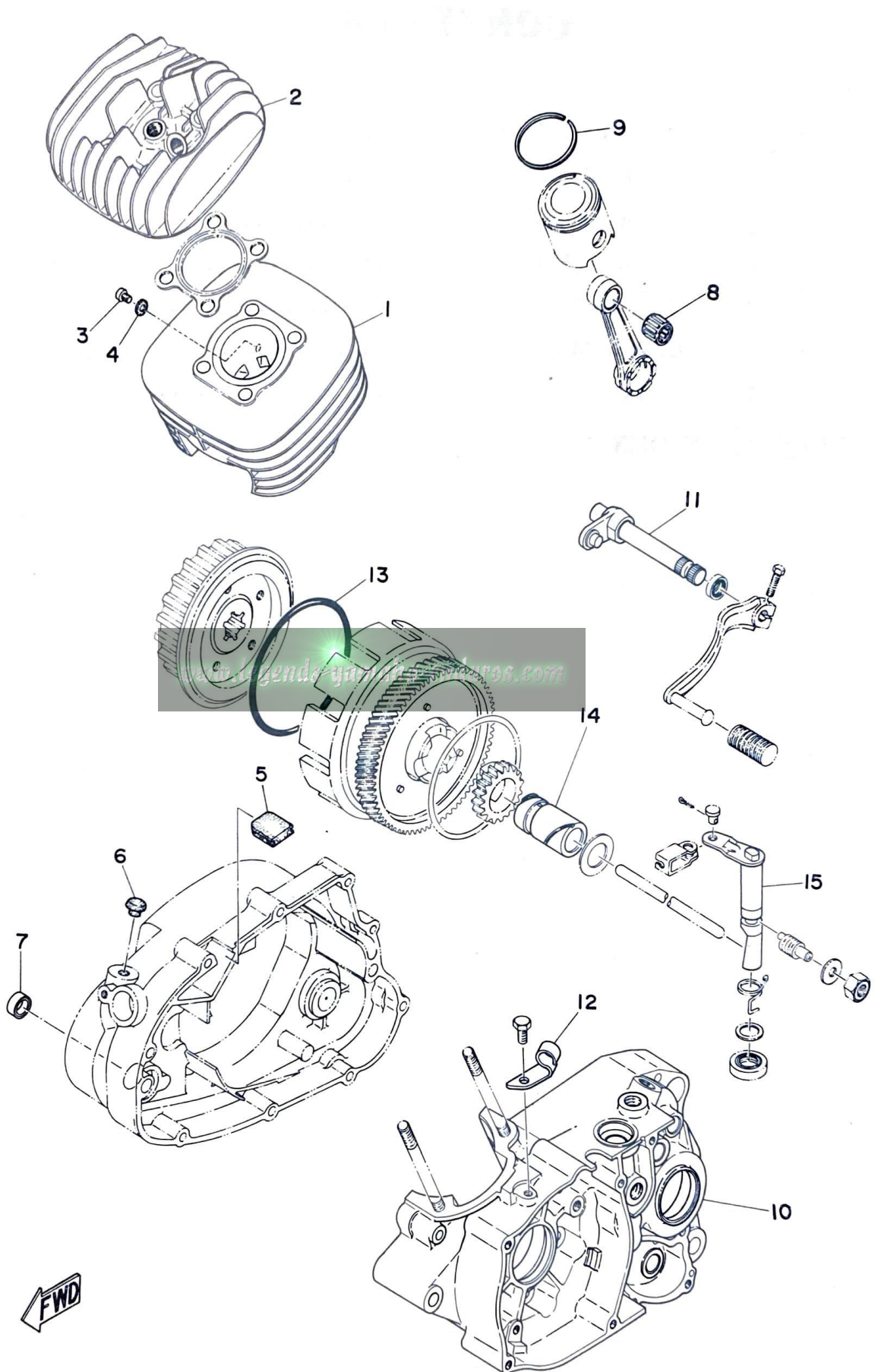
This Parts List is for the exclusive parts for YZ125B. Please refer to MX125 Parts List for the parts not listed in this publication.

# CONTENTS

Fig. 1	Cylinder . Crankcase . Clutch .....	1
Fig. 2	Transmission .....	3
Fig. 3	Carburetor . Exhaust .....	5
Fig. 4	Frame . Front Fork . Wire .....	7
Fig. 5	Fuel Tank . Wheel .....	9
Fig. 6	C. D. I. Magneto .....	11
Fig. 7	Electrical .....	13

## NUMERICAL INDEX

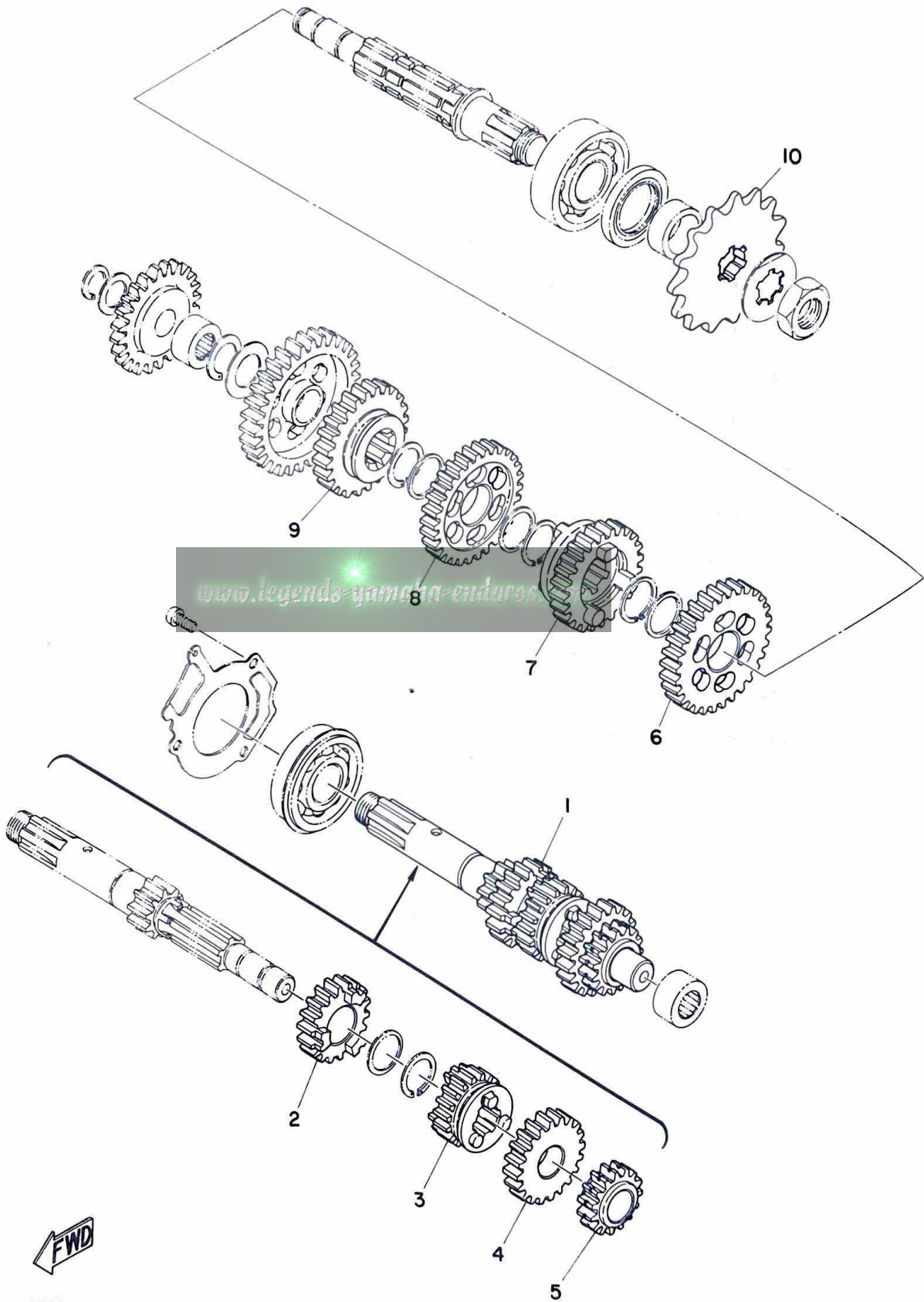
Fig. 1 CYLINDER · CRANKCASE · CLUTCH



# CYLINDER · CRANKCASE · CLUTCH

Ref. No.	Parts No.	Description	Q'ty	Applicable Machine No.	Remarks
1- 1	453-11311-00	CYLINDER .....	1		
1- 2	453-11111-00	HEAD, cylinder .....	1		
1- 3	92501-06009	SCREW, panhead .....	1		
1- 4	137-13167-00	GASKET, banjo 2 .....	1		
1- 5	345-15439-00	PLUG, blind .....	1		
1- 6	116-83931-00	PLUG, blind .....	1		
1- 7	168-17481-00	PLUG, blind .....	1		
1- 8	93310-21680	BEARING, con-rod small end ...	1		
1- 9	240-11611-00	RING, piston .....	1		
1-10	401-15111-03	CASE, crank left .....	1		
1-11	401-18102-00	CHANGE SHAFT 2 ASS'Y .....	1		
1-12	401-15441-02	HOLDER, clutch wire .....	1		
1- 0-1	401-16301-00	CLUTCH ASS'Y .....	1		
1-13	93210-98202	. O-RING (5.33-97.76) .....	1		
1-14	90387-20439	COLLAR .....	1		
1-15	401-16382-02	AXLE, push lever .....	1		

Fig. 2 TRANSMISSION



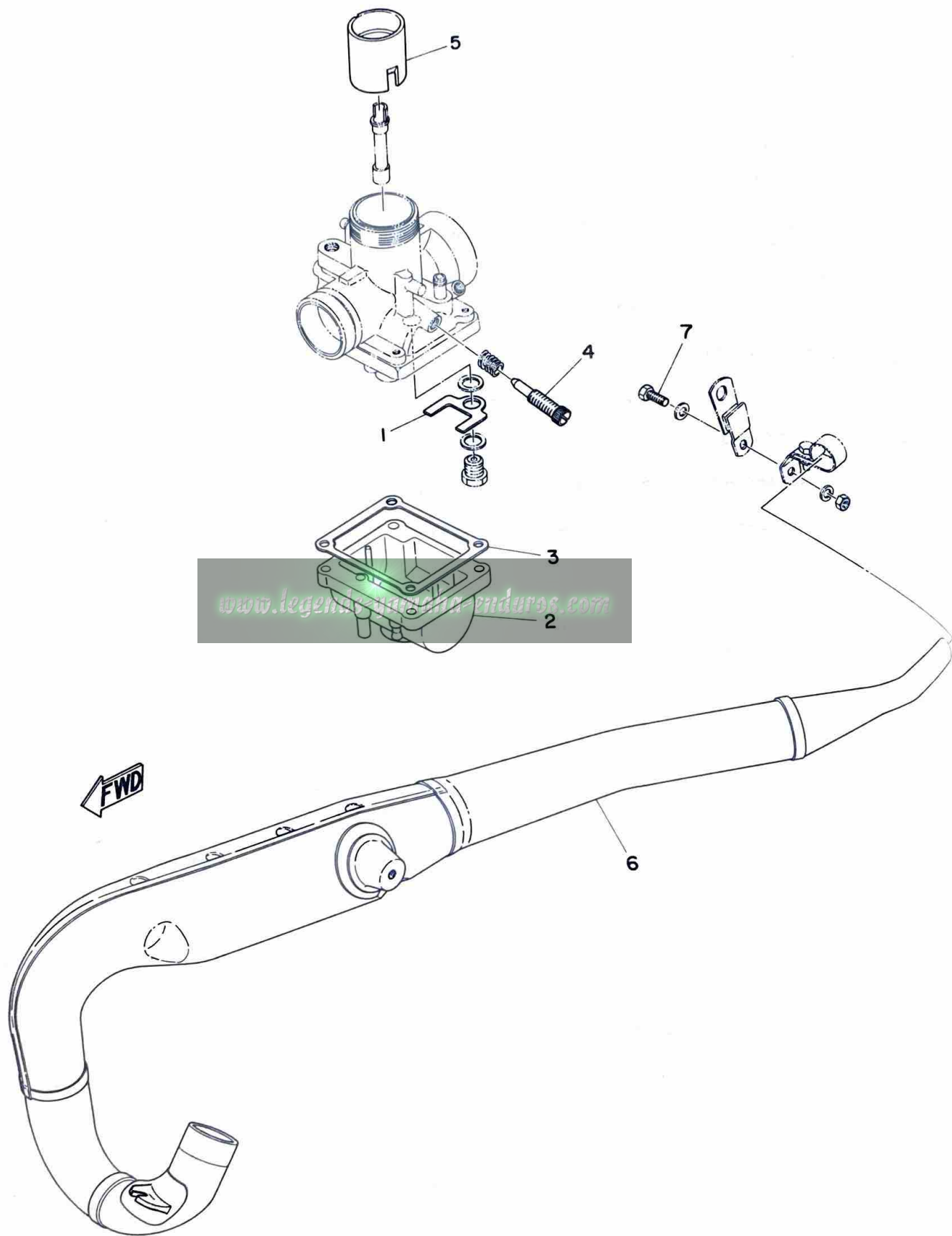


# TRANSMISSION

Ref. No.	Parts No.	Description	Q'ty	Applicable Machine No.	Remarks
2- 1	401-17410-00	MAIN AXLE COMP. ....	1		
2- 2	401-17141-00	. GEAR, 4th pinion (19T) .....	1		
2- 3	401-17131-01	. GEAR, 3rd pinion (18T) .....	1		
2- 4	401-17151-01	. GEAR, 5th pinion (21T) .....	1		
2- 5	401-17121-00	. GEAR, 2nd pinion (15T) .....	1		
2- 6	401-17221-00	GEAR, 2nd wheel (31T) .....	1		
2- 7	401-17251-00	GEAR, 5th wheel (24T) .....	1		
2- 8	401-17231-00	GEAR, 3rd wheel (29T) .....	1		
2- 9	317-17241-10	GEAR, 4th wheel (25T) .....	1		
2-10	174-17461-30	SPROCKET, drive (13T) .....	} U. R 1		STD
	174-17461-40	SPROCKET, drive (14T) .....			
	174-17461-50	SPROCKET, drive (15T) .....			

[www.legends-yamaha-enduro6.com](http://www.legends-yamaha-enduro6.com)

Fig. 3 CARBURETOR · EXHAUST



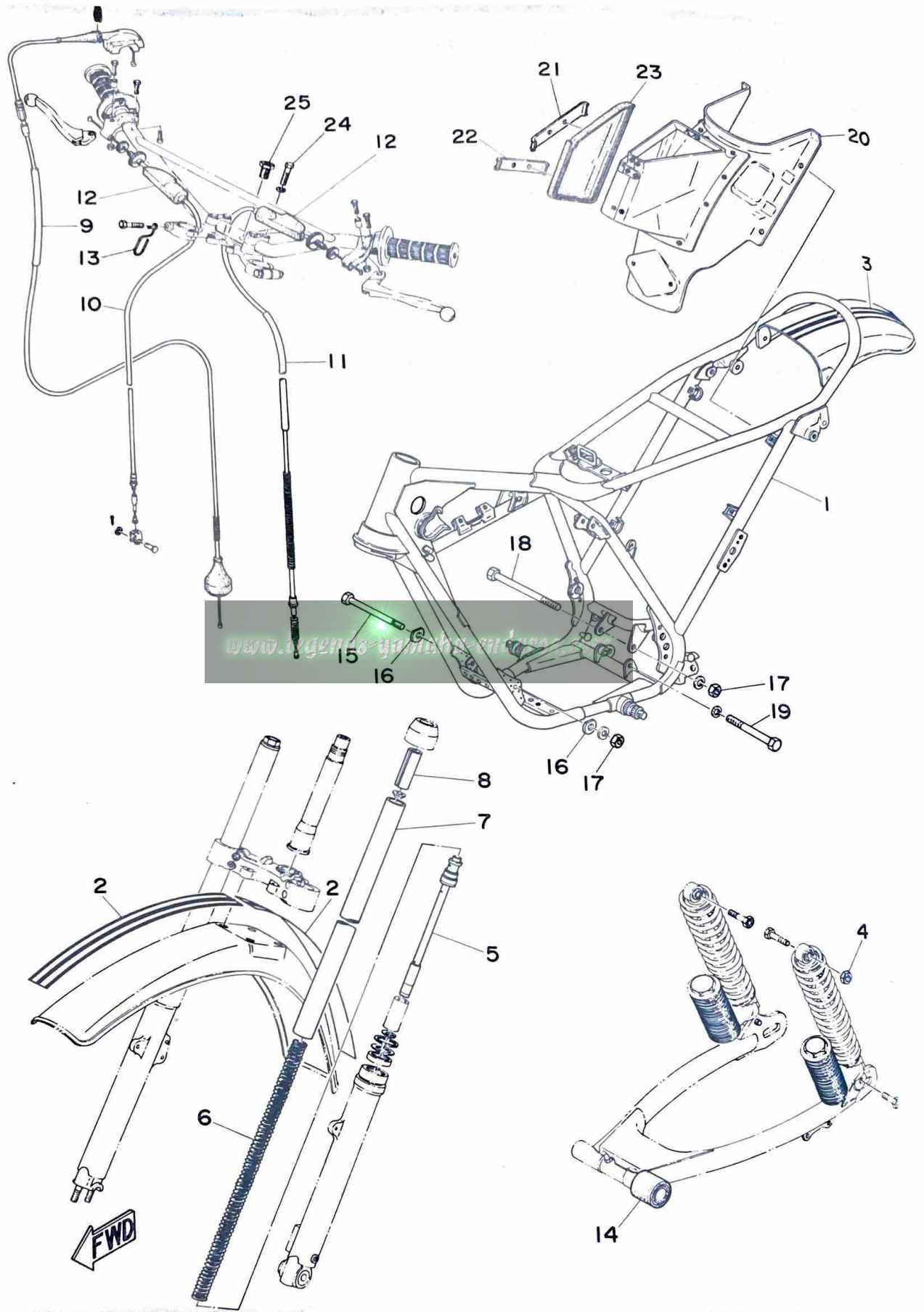
# CARBURETOR · EXHAUST

Ref. No.	Parts No.	Description	Q'ty	Applicable Machine No.	Remarks
3- 0-1	401-14101-01	CARBURETOR ASS'Y .....	1		
3- 1	346-14146-70	. PLATE .....	1		
3- 2	278-14181-00-33	. BODY, float chamber .....	1		
3- 3	278-14184-00	. GASKET, float chamber .....	1		
3- 4	204-14122-00	. SCREW, throttle .....	1		
3- 5	278-14112-25	. VALVE, throttle (#2.5) .....	1		
3- 6	401-14610-01	EXHAUST PIPE ASS'Y .....	1		
3- 7	91201-06018	BOLT .....	1		

[www.legends-yamaha-enduro.com](http://www.legends-yamaha-enduro.com)



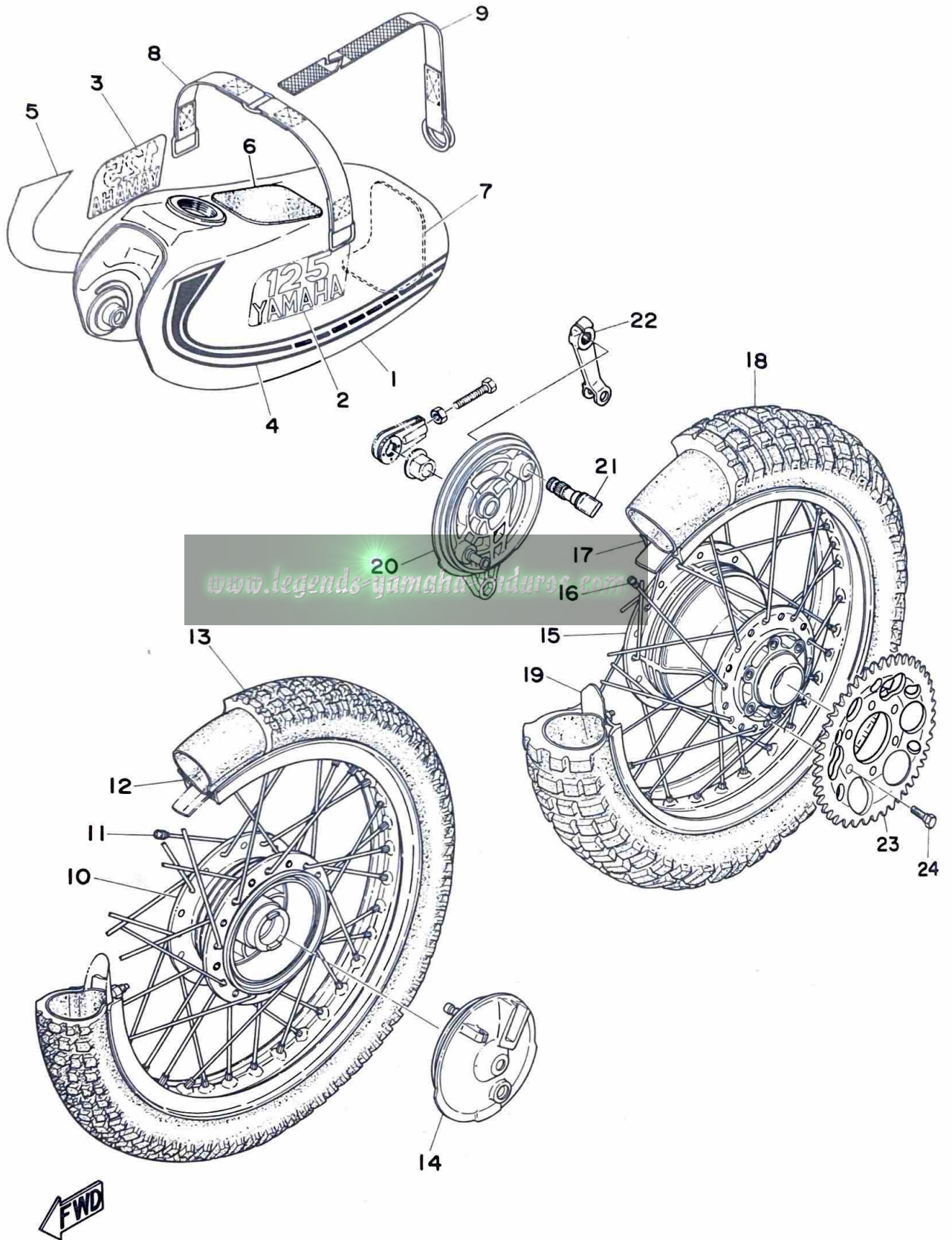
Fig. 4 FRAME · FRONT FORK · WIRE



# FRAME · FRONT FORK · WIRE

Ref. No.	Parts No.	Description	Q'ty	Applicable Machine No.	Remarks
4- 1	453-21110-00-33	FRAME COMP. ....	1		Yamaha Black
4- 2	483-21519-00	STRIPE, front fender ....	2		
4- 3	483-21619-00	STRIPE, rear fender ....	1		
4- 4	90185-10037	NUT ....	1		
4- 0-1	401-23101-00	FRONT FORK ASS'Y ....	1		
4- 5	401-23170-00	. CYLINDER COMP. ....	2		
4- 6	401-23141-00	. SPRING, fork ....	2		
4- 7	401-23124-00	. TUBE, inner ....	2		
4- 8	401-23118-00	. SPACER ....	2		
4- 9	401-26311-00	WIRE, throttle 1 ....	1		
4-10	401-26341-00	WIRE, brake front ....	1		
4-11	401-26335-03	WIRE, clutch ....	1		
4-12	382-26372-01	. COVER, lever ....	2		
4-13	434-23319-00	HOLDER, wire ....	1		
4-14	443-22151-00	SEAL, guard ....	1		
4-15	90109-08255	BOLT ....	1		
4-16	90209-08050	WASHER 1 ....	2		
4-17	90185-08039	NUT, U ....	2		
4-18	90109-08348	BOLT ....	1		
4-19	90109-10346	BOLT ....	1		
4-20	401-21240-02	BOX COMP., air cleaner .....	1		
4-21	402-21256-00	. PATCH 1 ....	1		
4-22	402-21257-00	. PATCH 2 ....	1		
4-23	402-21269-00	. SEAL ....	1		
4-24	90101-08131	BOLT ....	4		
4-25	90109-14235	BOLT ....	1		

Fig. 5 FUEL TANK · WHEEL

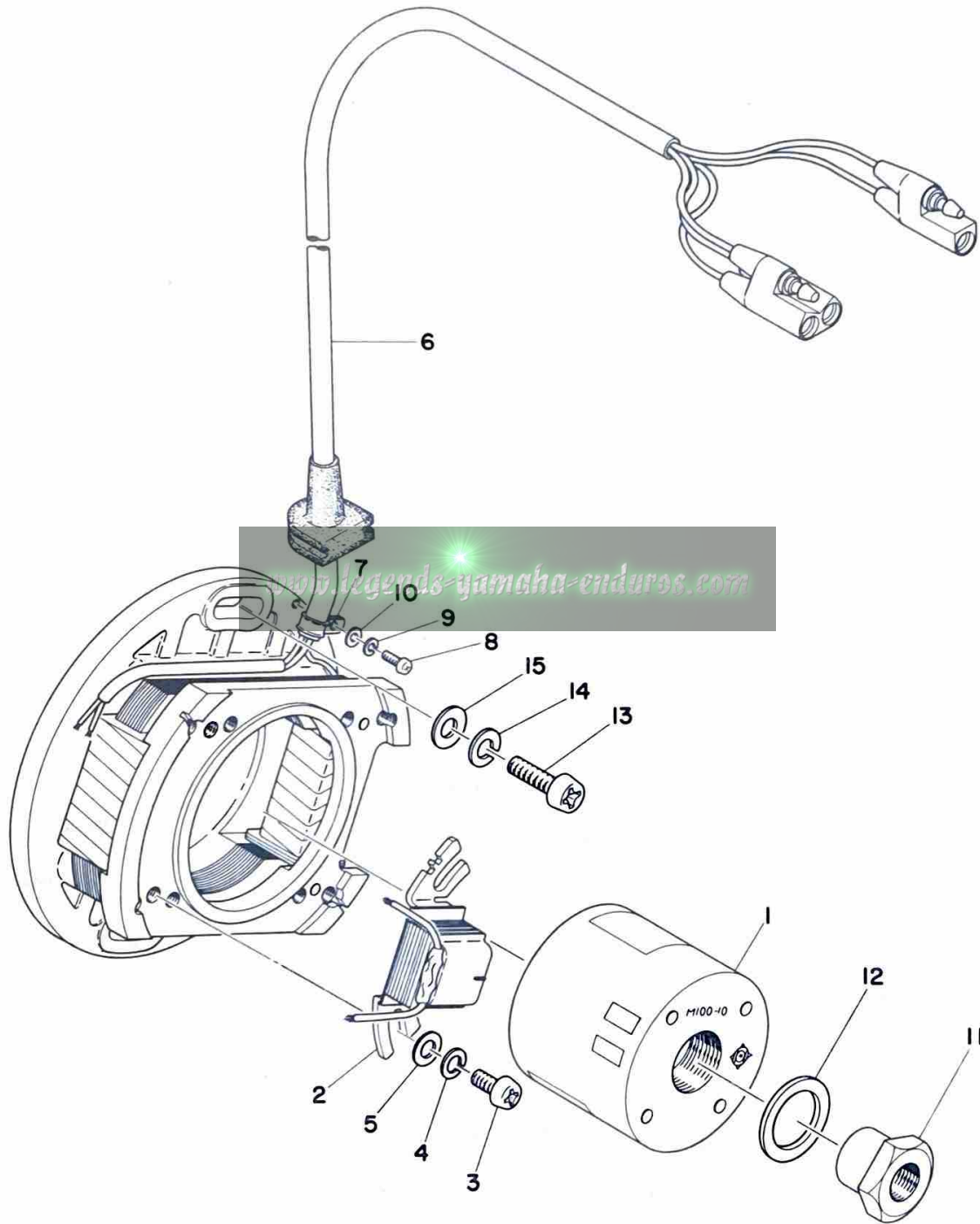




# FUEL TANK · WHEEL

Ref. No.	Parts No.	Description	Q'ty	Applicable Machine No.	Remarks
5- 1	453-24110-00-03	FUEL TANK COMP. ....	1		Competition Yellow
5- 2	453-24161-00	. EMBLEM, fuel tank ....	1		
5- 3	453-24162-00	. EMBLEM, fuel tank ....	1		
5- 4	453-24244-20	. GRAPHIC, fuel tank left .....	1		
5- 5	453-24245-20	. GRAPHIC, fuel tank right .....	1		
5- 6	431-24182-00	DAMPER 1 .....	1		
5- 7	431-24183-00	DAMPER 2 .....	1		
5- 8	453-24199-00	BAND, tank fitting 2 .....	1		
5- 9	453-24173-01	BAND, tank fitting 1 .....	1		
5-10	248-25111-00-98	HUB, front .....	1		
5-11	345-25104-00	SPOKE SET .....	1s		
5-12	94416-21118	RIM, front (1.60A-21) .....	1		
5-13	94127-21158	TIRE, front (2.75-21-4P.R.) ....	1		Yokohama
5-14	401-25121-00-98	PLATE, brake shoe .....	1		
5-15	403-25311-00-98	HUB, rear .....	1		
5-16	401-25304-00	SPOKE SET .....	1s		
5-17	94418-18127	RIM, rear (1.85B-18) .....	1		
5-18	94135-18159	TIRE, rear (3.50-18-4P.R.) ...	} U. R. 1		Dunlop
	94135-18160	TIRE, rear (3.50-18-4P.R.) ...			Yokohama
5-19	214-25394-00	SPACER, bead .....	2		
5-20	401-25321-00-98	PLATE, brake shoe .....	1		
5-21	401-25351-00	CAMSHAFT .....	1		
5-22	431-25355-00	LEVER, camshaft .....	1		
5-23	401-25445-00	GEAR, sprocket wheel (45T) ....	} U. R. 1		STD
	401-25447-00	GEAR, sprocket wheel (47T) ....			
	401-25449-00	GEAR, sprocket wheel (49T) ....			
5-24	90109-08027	BOLT .....	6		

Fig. 6 C.D.I.MAGNETO

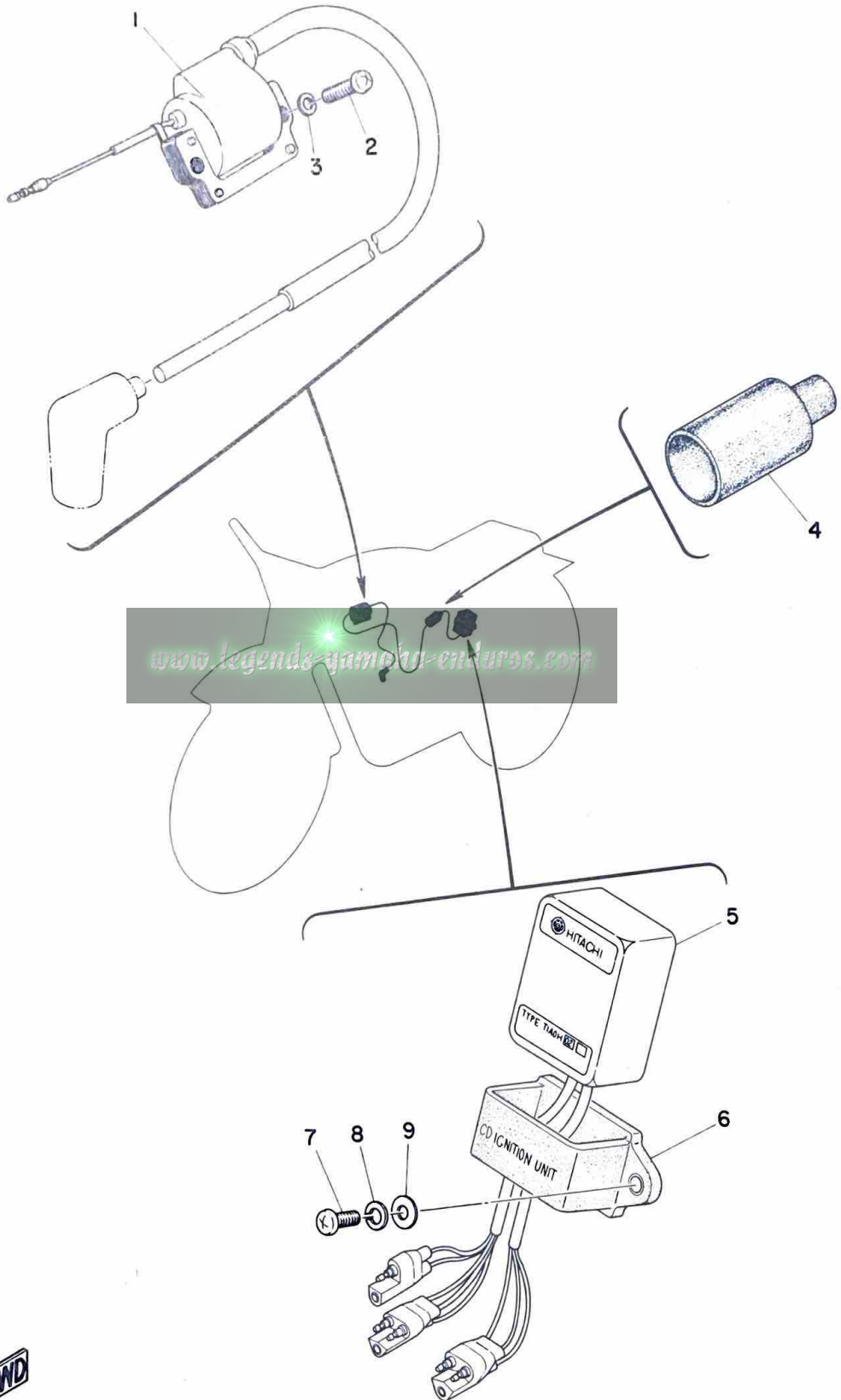




# C.D.I. MAGNETO

Ref. No.	Parts No.	Description	Q'ty	Applicable Machine No.	Remarks
6- 0-1	401-85500-11	C. D. I. MAGNETO ASS'Y .....	1		
6- 1	401-85550-10	. ROTOR ASS'Y .....	1		
6- 2	364-85543-10	. COIL, pulser .....	1		
6- 3	98501-05010	. SCREW, panhead .....	2		
6- 4	92901-05100	. WASHER, spring .....	2		
6- 5	92901-05200	. WASHER, plain .....	2		
6- 6	401-85515-10	. LEAD WIRE ASS'Y .....	1		
6- 7	109-81328-10	. CLAMP, lead .....	1		
6- 8	165-81145-21	. SCREW, panhead .....	1		
6- 9	92901-04100	. WASHER, spring .....	1		
6-10	92901-04200	. WASHER, plain .....	1		
6-11	322-85553-10	. NUT, rotor .....	1		
6-12	322-85554-10	. WASHER, rotor .....	1		
6-13	92501-06018	. SCREW, panhead .....	2		
6-14	92901-06100	WASHER, spring .....	2		
6-15	92901-06200	WASHER, plain .....	2		

Fig. 7 ELECTRICAL



# ELECTRICAL

Ref. No.	Parts No.	Description	Q'ty	Applicable Machine No.	Remarks
7- 1	322-82310-10	IGNITION COIL ASS'Y .....	1		
7- 2	92501-06025	SCREW, panhead .....	2		
7- 3	92901-06100	WASHER, spring .....	2		
7- 4	256-82599-00	COVER, connector .....	1		
7- 5	364-85540-13	C. D. I. UNIT ASS'Y .....	1		
7- 6	363-85546-00	BAND .....	1		
7- 7	92501-06018	SCREW, panhead .....	2		
7- 8	92901-06100	WASHER, spring .....	2		
7- 9	136-22316-00	WASHER, chain case .....	2		

[www.legends-yamaha-enduros.com](http://www.legends-yamaha-enduros.com)

# NUMERICAL INDEX

Ref No.	Parts No.	Ref No.	Parts No.	Ref No.	Parts No.
6- 7	109-81328-10	2- 4	401-17151-01	5- 1	453-24110-00-03
1- 6	116-83931-00	2- 6	401-17221-00	5- 2	453-24161-00
7- 9	136-22316-00	2- 8	401-17231-00	5- 3	453-24162-00
1- 4	137-13167-00	2- 7	401-17251-00	5- 9	453-24173-01
6- 8	165-81145-21	2- 1	401-17410-00	5- 8	453-24199-00
1- 7	168-17481-00	1-11	401-18102-00	5- 4	453-24244-20
2-10	174-17461-30	4-20	401-21240-02	5- 5	453-24245-20
2-10	174-17461-40	4- 0-1	401-23101-00	4- 2	483-21619-00
2-10	174-17461-50	4- 8	401-23118-00	4- 3	483-21619-00
3- 4	204-14122-00	4- 7	401-23124-00	4-24	90101-08131
5-19	214-25394-00	4- 6	401-23141-00	5-24	90109-08027
1- 9	240-11611-00	4- 5	401-23170-00	4-15	90109-08255
5-10	248-25111-00-98	5-14	401-25121-00-98	4-18	90109-08348
7- 4	256-82599-00	5-16	401-25304-00	4-19	90109-10346
3- 5	278-14112-25	5-20	401-25321-00-98	4-25	90109-14235
3- 2	278-14181-00-33	5-21	401-25351-00	4-17	90185-08039
3- 3	278-14184-00	5-23	401-25445-00	4- 4	90185-10037
2- 9	317-17241-10	5-23	401-25447-00	4-16	90209-08050
7- 1	322-82310-10	5-23	401-25449-00	1-14	90387-20439
6-11	322-85553-10	4- 9	401-26311-00	3- 7	91201-06018
6-12	322-85554-10	4-11	401-26335-03	1- 3	92501-06008
1- 5	345-15439-00	4-10	401-26341-00	6-13	92501-06018
5-11	345-25104-00	6- 0-1	401-85500-11	7- 7	92501-06018
3- 1	346-14146-70	6- 6	401-85515-10	7- 2	92501-06025
7- 6	363-85546-00	6- 1	401-85550-10	6- 9	92901-04100
7- 5	364-85540-13	4-21	402-21256-00	6-10	92901-04200
6- 2	364-85543-10	4-22	402-21257-00	6- 4	92901-05100
4-12	382-26372-01	4-23	402-21269-00	6- 5	92901-05200
3- 0-1	401-14101-01	5-15	403-25311-00-98	6-14	92901-06100
3- 6	401-14610-01	5- 6	431-24182-00	7- 3	92901-06100
1-10	401-15111-03	5- 7	431-24183-00	7- 8	92901-06100
1-12	401-15441-02	5-22	431-25355-00	5-15	92901-06200
1-0-1	401-16301-00	4-13	434-23319-00	1-13	93210-98202
1-15	401-16382-02	4-14	443-22151-00	1- 8	93310-21680
2- 5	401-17121-00	1- 2	453-11111-00	5-13	94127-21158
2- 3	401-17131-01	1- 1	453-11311-00	5-18	94135-18159
2- 2	401-17141-00	4- 1	453-21110-00-33	5-18	94135-18160

[www.legends-yamaha-enduros.com](http://www.legends-yamaha-enduros.com)



**YAMAHA MOTOR CO., LTD.**

**PRINTED IN JAPAN**  
**Second edition Jun., 1974**  
**(LIT-10014-53-01)(453-82)**