

MODEL **MX175A**

www.legends-yamaha-enduros.com

NOTICE

ALL PART NUMBERS CONTAINED IN THIS CATALOGUE ARE COMPRISED OF TEN DIGITS. WHEN ORDERING, PLEASE ADD TWO ZEROS TO THE END OF EACH PART NUMBER REQUIRED TO CONVERT THE TEN DIGITS INTO THE NEW TWELVE DIGIT NUMBERS.

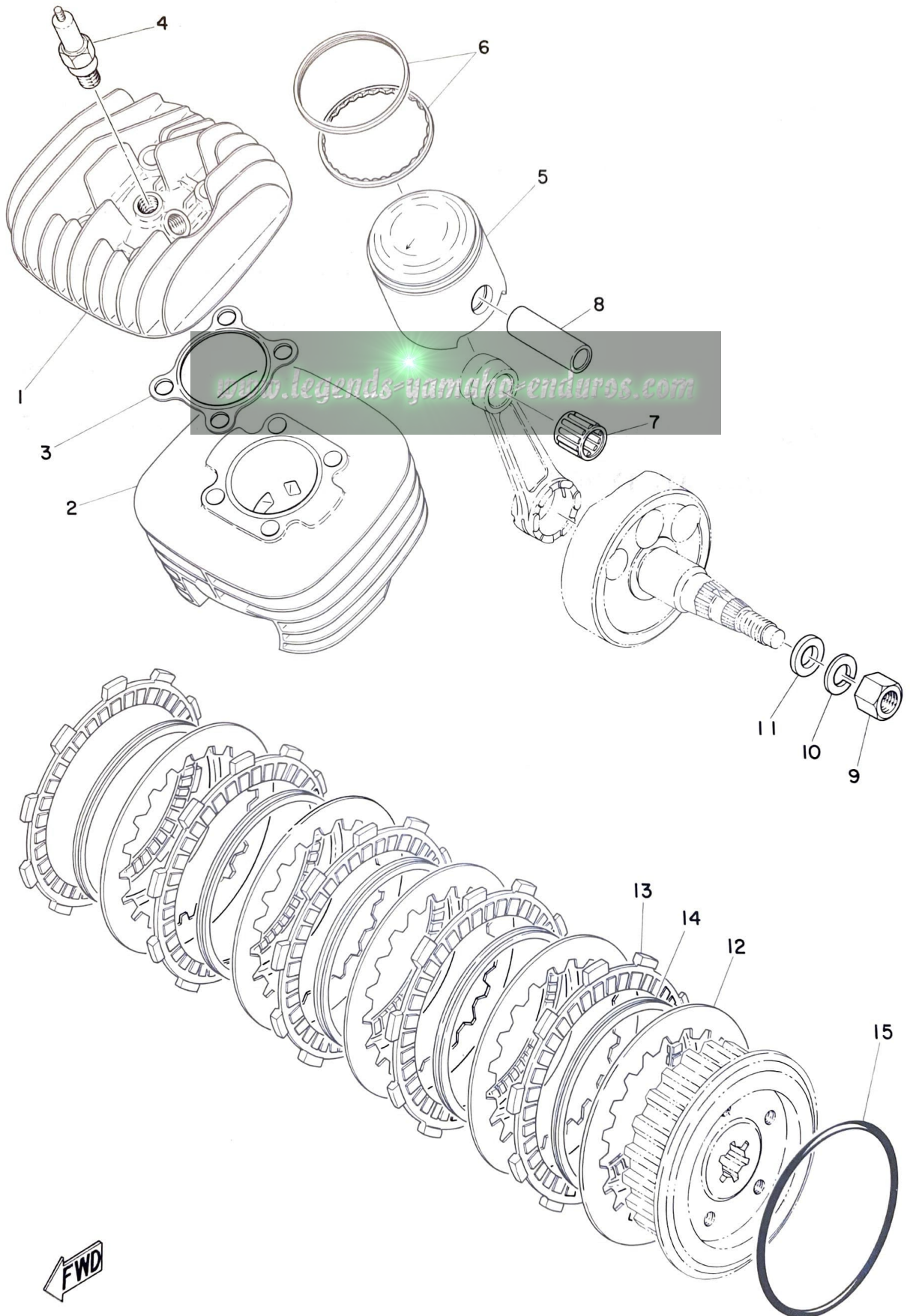
This Parts List is for the exclusive parts for the MX175A. Please refer to MX125 Parts List for the parts not listed in this publication.

CONTENTS

Fig. 1	Cylinder · Piston · Clutch	1
Fig. 2	Carburetor	5
Fig. 3	Exhaust	9
Fig. 4	C.D.I Magneto	11
Fig. 5	Front Fork · Seat	13
Fig. 6	Front Wheel · Rear Wheel	15
Fig. 7	Electrical	17

NUMERICAL INDEX

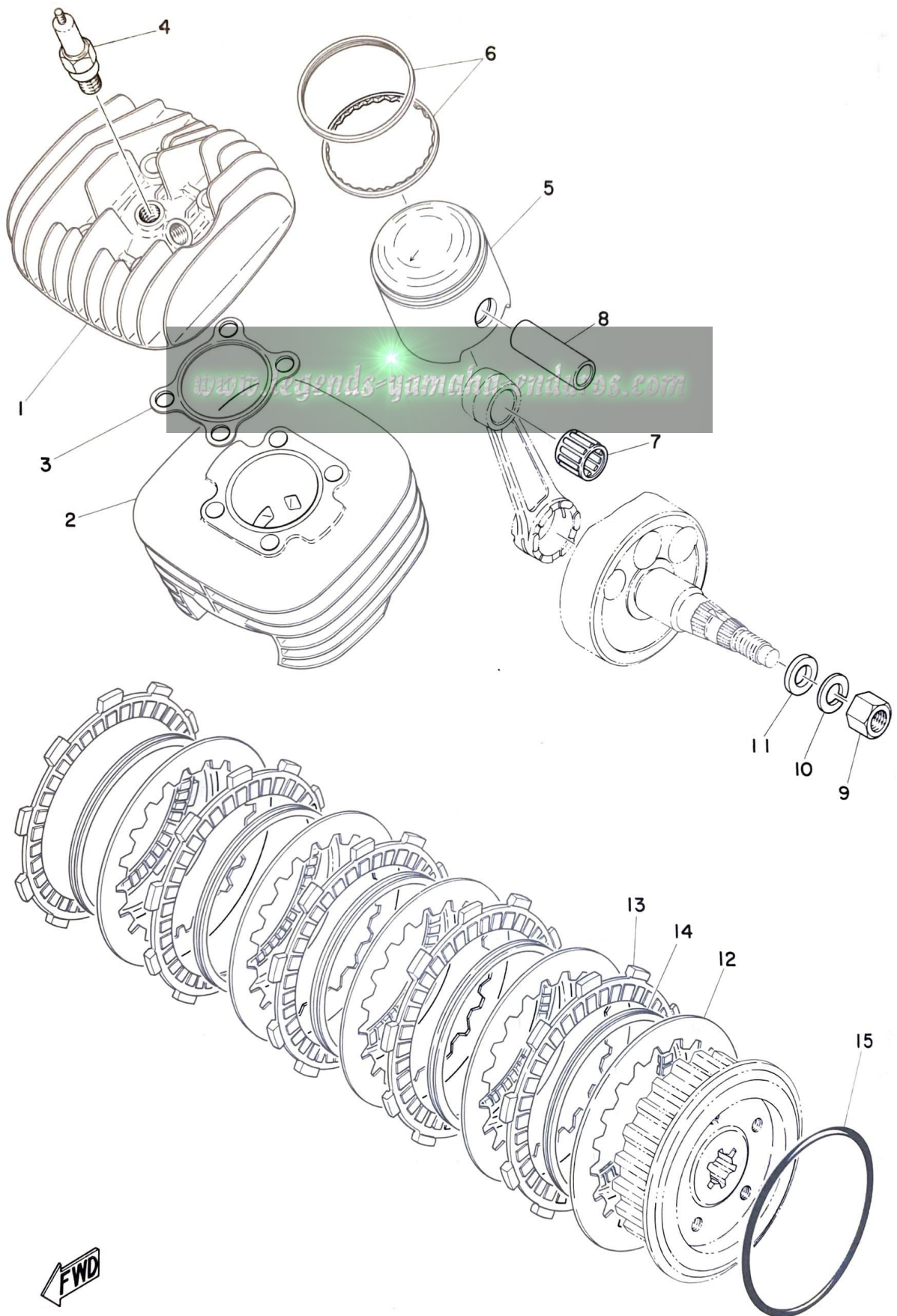
Fig. 1 CYLINDER · PISTON · CLUTCH



CYLINDER · PISTON · CLUTCH

Ref. No.	Parts No.	Description	Q'ty	Applicable Machine No.	Remarks
1- 1	455-11111-00	HEAD, cylinder	1		
1- 2	455-11311-01	CYLINDER	1		
1- 3	251-11181-00	GASKET, cylinder head	1		
1- 4	94701-00074	PLUG, spark (B-8EV)	1		
1- 5	443-11631-02-96	PISTON (65.96mm STD)	} U.R 1		
	443-11631-02-98	PISTON (65.98mm STD)			
	443-11635-02	PISTON (66.25mm 1st O.S)	1		Alternate Parts
	443-11636-02	PISTON (66.50mm 2nd O.S)	1		Alternate Parts
	443-11637-02	PISTON (66.75mm 3rd O.S)	1		Alternate Parts
	443-11638-02	PISTON (67.00mm 4th O.S)	1		Alternate Parts
1- 6	445-11610-00	PISTON RING SET (STD)	1		
	445-11610-10	PISTON RING SET (1st O.S) ...	1		Alternate Parts
	445-11610-20	PISTON RING SET (2nd O.S) ...	1		Alternate Parts
	445-11610-30	PISTON RING SET (3rd O.S) ...	1		Alternate Parts
	445-11610-40	PISTON RING SET (4th O.S) ...	1		Alternate Parts
1- 7	93310-21679	BEARING, con-rod small end ..	1		
1- 8	251-11633-00	PIN, piston	1		
1- 9	214-11555-01	NUT, crank shaft	1		
1-10	92901-12100	WASHER, spring	1		
1-11	214-11557-01	WASHER 1	1		
1- 0-1	455-16301-00	CLUTCH ASS'Y	1		
1-12	336-16324-00	. PLATE, clutch	5		
1-13	437-16321-00	. PLATE, friction	5		
1-14	137-16367-00	. RING, cushion	5		
1-15	93210-98202	. O-RING	1		

Fig. 1 CYLINDER · PISTON · CLUTCH



CYLINDER · PISTON · CLUTCH

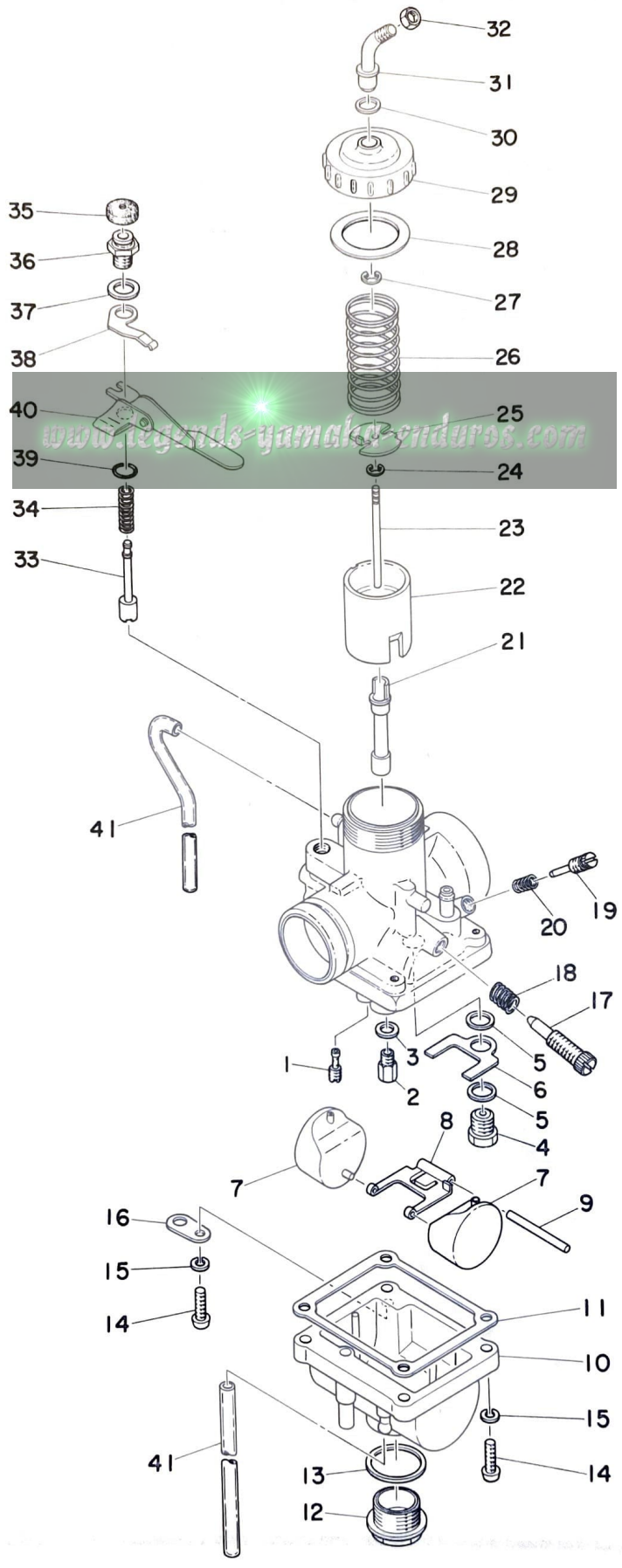
Ref. No.	Parts No.	Description	Q'ty	Applicable Machine No.	Remarks
----------	-----------	-------------	------	------------------------	---------

ALTERNATE PARTS

1- 0-2	445-11630-00	PISTON ASS'Y (STD)	1	
	445-11630-10	PISTON ASS'Y (1st O.S)	1	
	445-11630-20	PISTON ASS'Y (2nd O.S)	1	
	445-11630-30	PISTON ASS'Y (3rd O.S)	1	
	445-11630-40	PISTON ASS'Y (4th O.S)	1	

www.legends-yamaha-enduros.com

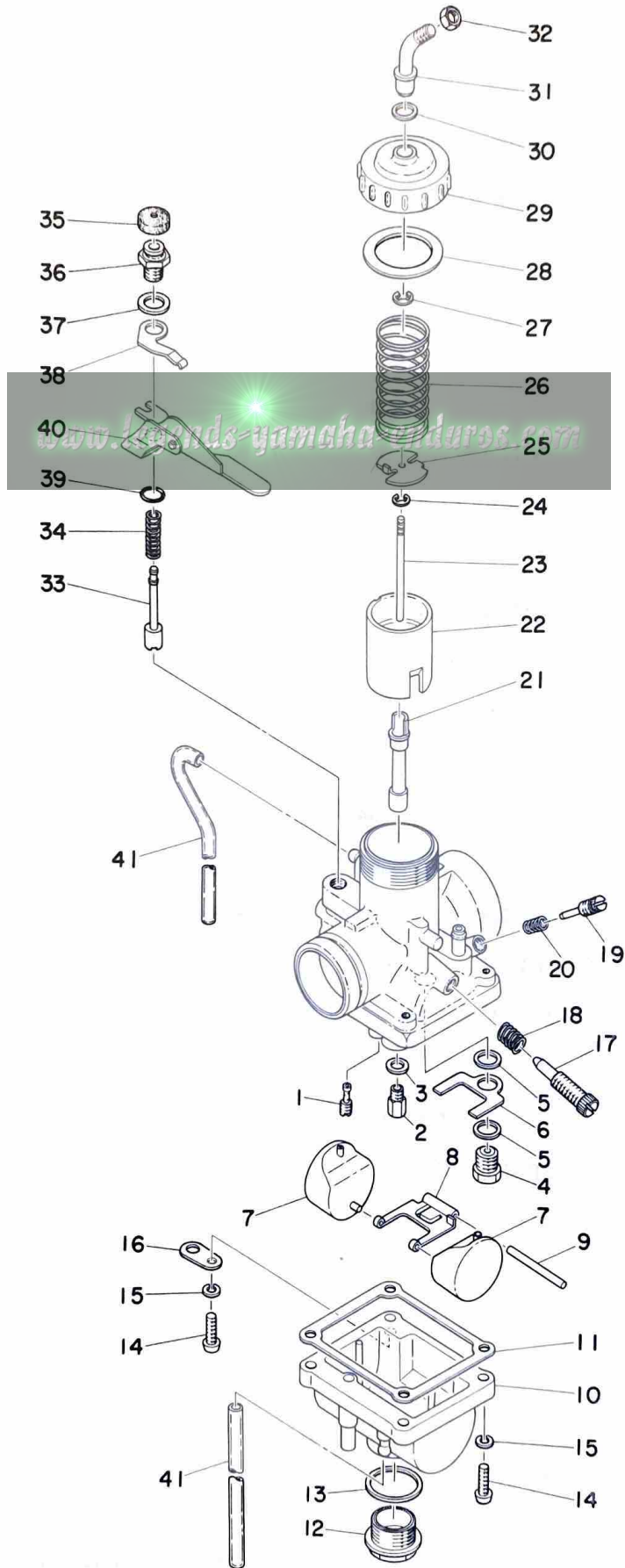
Fig. 2 CARBURETOR



CARBURETOR

Ref. No.	Parts No.	Description	Q'ty	Applicable Machine No.	Remarks
2- 0-1	455-14101-61	CARBURETOR ASS'Y	1		
2- 1	193-14142-70	. JET, pilot (#70)	1		
2- 2	137-14143-28	. JET, main (#140)	} U. R. 1		STD
	137-14143-30	. JET, main (#150)			
	137-14143-32	. JET, main (#160)			
2- 3	346-14153-70	. WASHER, main jet	1		
2- 4	168-14190-25	. VALVE SEAT ASS'Y (#2.5)	1		
2- 5	214-14195-00	. WASHER, valve seat	2		
2- 6	402-14146-00	. PLATE	1		
2- 7	280-14185-00	. FLOAT	2		
2- 8	280-14187-00	. ARM, float	1		
2- 9	137-14186-00	. PIN, float	1		
2-10	402-14181-00-33	. BODY, float chamber	1		
2-11	360-14184-00	. GASKET, float chamber	1		
2-12	278-14115-00	. PLUG, screw	1		
2-13	278-14117-00	. WASHER, screw plug	1		
2-14	98503-04015	. SCREW, panhead	4		
2-15	92901-04100	. WASHER, spring	4		
2-16	132-14146-00	. PLATE	1		
2-17	275-14122-00	. SCREW, throttle	1		
2-18	137-14133-00	. SPRING, throttle stop	1		
2-19	152-14123-00	. SCREW, air adjusting	1		
2-20	127-14134-00	. SPRING, air adjusting	1		
2-21	278-14141-28	. NOZZLE, main (N-8)	1		
2-22	360-14112-25	. VALVE, throttle (#2.5)	1		
2-23	438-14116-04	. NEEDLE (5EI4-2)	1		
2-24	137-14137-00	. CLIP	1		

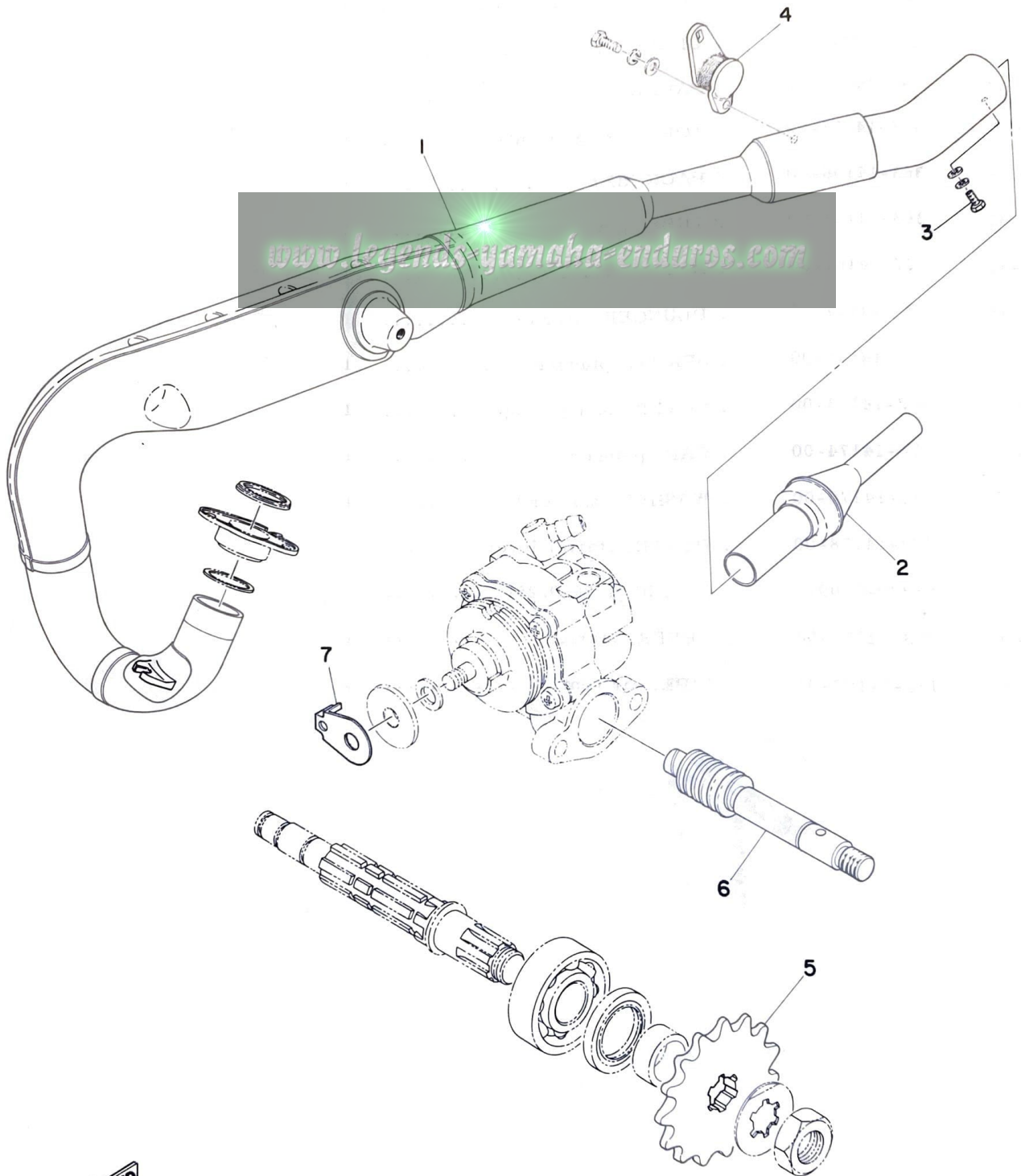
Fig. 2 CARBURETOR



CARBURETOR

Ref. No.	Parts No.	Description	Q'ty	Applicable Machine No.	Remarks
2-25	401-14136-00	. SEAT, spring	1		
2-26	248-14131-00	. SPRING, throttle valve	1		
2-27	363-14137-00	. CLIP	1		
2-28	246-14126-00	. PACKING	1		
2-29	401-14158-00-33	. TOP, mixing chamber	1		
2-30	363-14198-00	. PACKING	1		
2-31	363-14155-00	. TUBE, guide wire	1		
2-32	127-14161-00	. NUT	1		
2-33	278-14171-00	. PLUNGER, starter	1		
2-34	256-14135-00	. SPRING, plunger	1		
2-35	802-14173-00	. COVER, plunger cap	1		
2-36	278-14174-00	. CAP, plunger	1		
2-37	132-14179-00	. WASHER, starter lever	1		
2-38	402-14178-00	. PLATE, starter lever	1		
2-39	93220-09001	. O-RING (1.78-9.25)	1		
2-40	278-14175-00	. LEVER, starter	1		
2-41	183-14197-01	. PIPE, air vent	2		

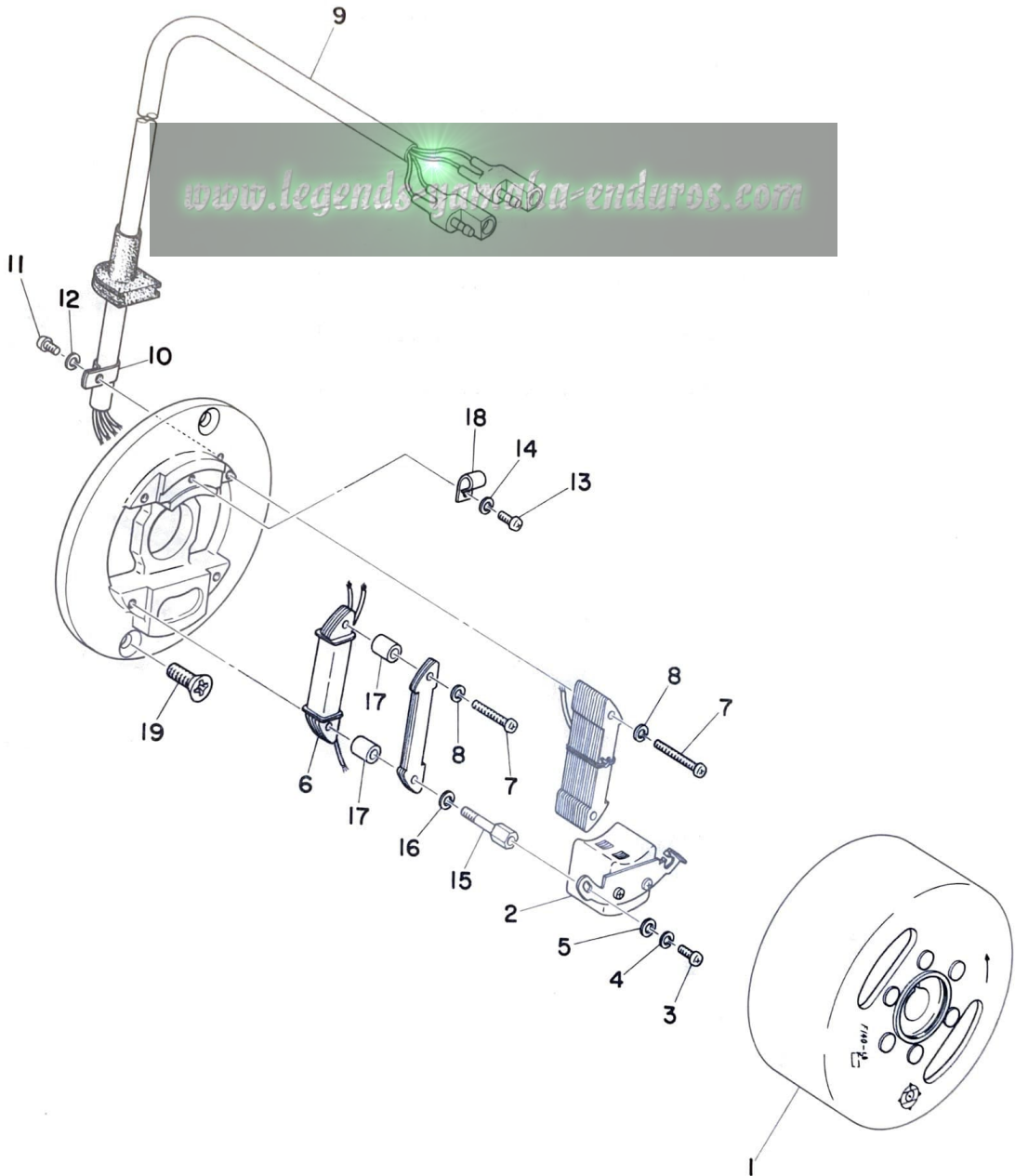
Fig. 3 EXHAUST



EXHAUST

Ref. No.	Parts No.	Description	Q'ty	Applicable Machine No.	Remarks
3- 1	455-14610-00	EXHAUST PIPE ASS'Y	1		
3- 2	455-14752-00	. PIPE, outlet	1		
3- 3	91201-06010	. BOLT	1		
3- 4	363-14782-10	STAY, muffler	1		
3- 5	174-17461-30	SPROCKET, drive (13T)	} U.R 1		STD
	17-417461-40	SPROCKET, drive (14T)			
	174-17461-50	SPROCKET, drive (15T)			
3- 6	278-13175-00	SHAFT, worm	1		
3- 0-1	455-13101-00	OIL PUMP ASS'Y	1		
3- 7	402-13146-00	COVER	1		

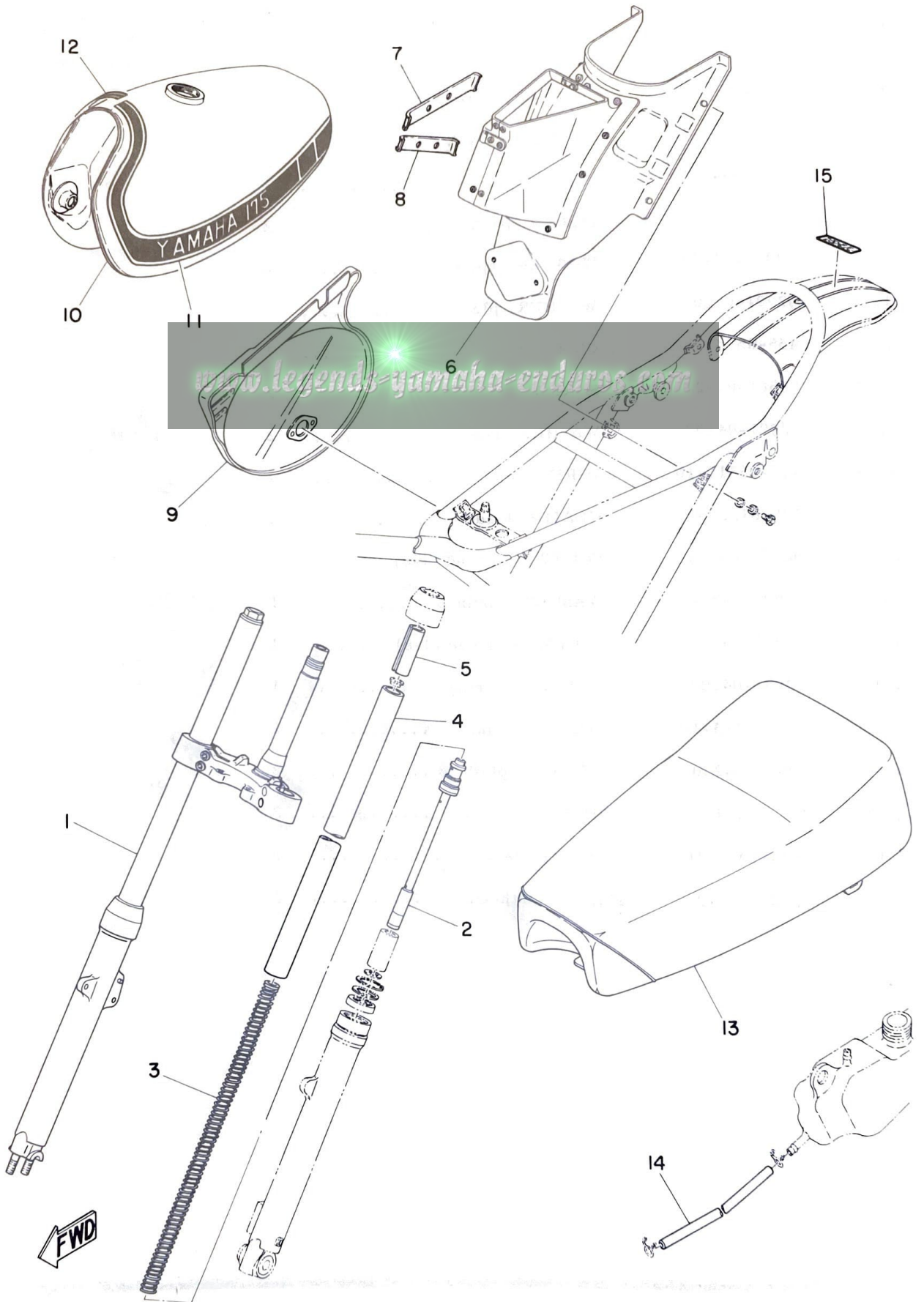
Fig. 4 C. D. I MAGNET



C.D. I MAGNETO

Ref. No.	Parts No.	Description	Q'ty	Applicable Machine No.	Remarks
4- 0-1	455-85500-11	C. D. I MAGNETO ASS'Y	1		
4- 1	455-85550-10	. ROTOR ASS'Y	1		
4- 2	455-85543-10	. PULSER 1	1		
4- 3	98501-04008	. SCREW, panhead (4-8)	2		
4- 4	92901-04100	. WASHER, spring	2		
4- 5	92901-04200	. WASHER, plain	2		
4- 6	455-85541-10	. COIL, charge	1		
4- 7	98501-04028	. SCREW, panhead (4-28)	2		
4- 8	92901-04100	. WASHER, spring	2		
4- 9	455-85515-10	. WIRE, lead	1		
4-10	109-81328-10	. CLAMP, lead	1		
4-11	98501-04008	. SCREW, panhead (4-8)	1		
4-12	92901-04100	. WASHER, spring	1		
4-13	98501-04008	. SCREW, panhead (4-8)	1		
4-14	92901-04100	. WASHER, spring	1		
4-15	455-85513-10	. BOLT, special	2		
4-16	92901-04200	. WASHER, plain	2		
4-17	455-85514-10	. SPACER	2		
4-18	363-85528-10	. CLAMP, lead	1		
4-19	92701-06012	SCREW, flathead	2		

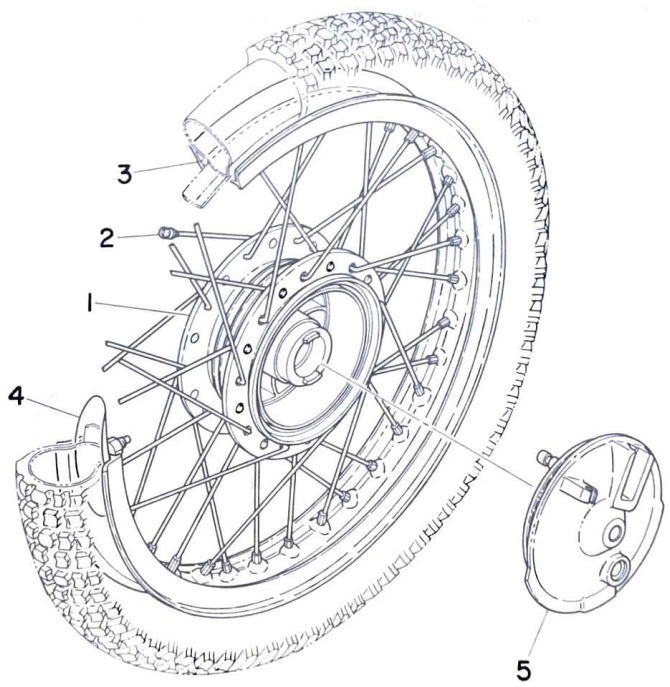
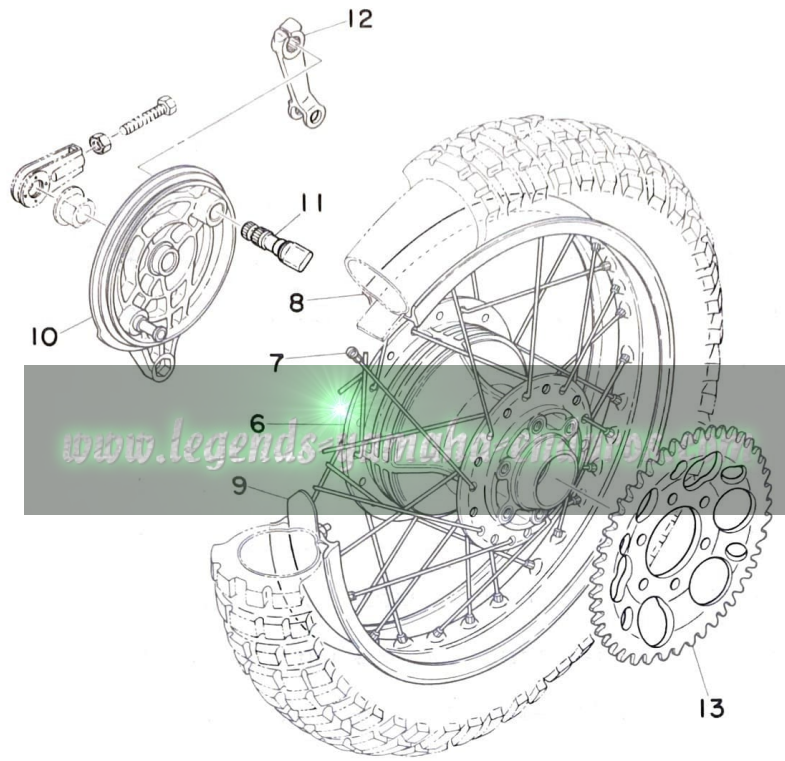
Fig. 5 FRONT FORK · SEAT



FRONT FORK · SEAT

Ref. No.	Parts No.	Description	Q'ty	Applicable Machine No.	Remarks
5- 1	401-23101-00	FRONT FORK ASS'Y	1		
5- 2	401-23170-00	. CYLINDER COMP.	2		
5- 3	401-23141-00	. SPRING, fork	2		
5- 4	401-23124-00	. TUBE, inner	2		
5- 5	401-23118-00	. SPACER	2		
5- 6	402-21240-00	BOX COMP.	1		
5- 7	402-21256-00	. PATCH 1	1		
5- 8	402-21257-00	. PATCH 2	1		
5- 9	455-21721-00	COVER, side right	1		
5-10	401-24110-00-05	FUEL TANK COMP.	1		Competition Yellow
5-11	455-24244-00	. GRAPHIC, fuel tank left	1		
5-12	455-24245-00	. GRAPHIC, fuel tank right	1		
5-13	427-24770-00	SEMI DOUBLE SEAT ASS'Y	1		
5-13-1	401-24771-00	. COVER, semi double seat	1		
5-14	174-21766-00	PIPE, oil	1		
5-15	288-21659-00	LABEL, warning	1		

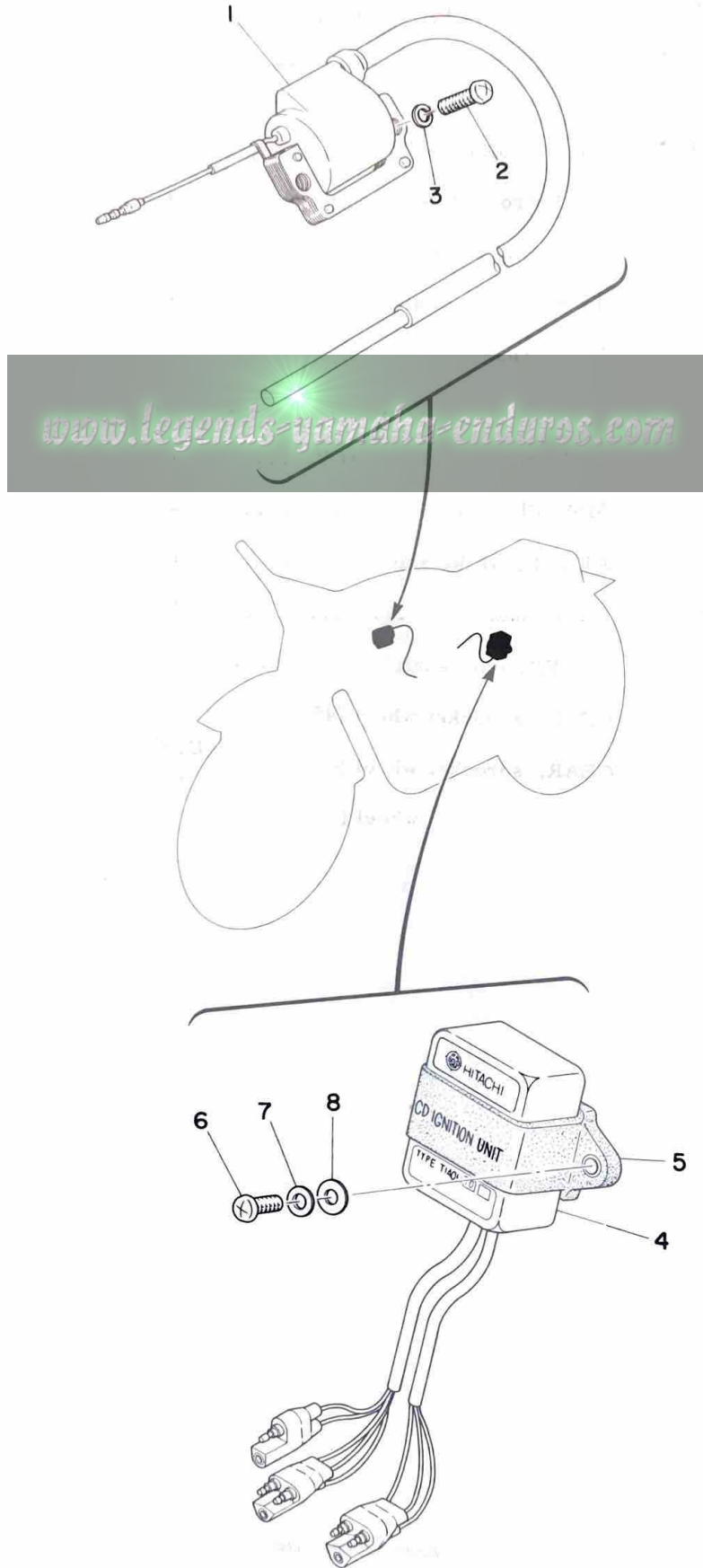
Fig.6 FRONT WHEEL · REAR WHEEL



FRONT WHEEL · REAR WHEEL

Ref. No.	Parts No.	Description	Q'ty	Applicable Machine No.	Remarks
6- 1	248-25111-00-35	HUB, front	1		Silver
6- 2	345-25104-00	SPOKE SET	1s		
6- 3	94416-21114	RIM, front (1.60A-21A ℓ)	1		
6- 4	214-25194-00	SPACER, bead	2		
6- 5	401-25121-00	PLATE, brake shoe	1		Silver
6- 6	403-25311-00-35	HUB, rear	1		Silver
6- 7	401-25304-00	SPOKE SET	1s		
6- 8	94418-18115	RIM, rear (1.85B-18A ℓ)	1		
6- 9	214-25394-00	SPACER, bead	2		
6-10	401-25321-00	PLATE, brake shoe	1		Silver
6-11	401-25351-00	CAM, shaft	1		
6-12	431-25355-00	LEVER, cam shaft	1		
6-13	401-25445-00	GEAR, sprocket wheel (45T) ...	} U.R 1		STD
	401-25447-00	GEAR, sprocket wheel (47T) ...			
	401-25449-00	GEAR, sprocket wheel (49T) ...			

Fig. 7 ELECTRICAL



ELECTRICAL

Ref. No.	Parts No.	Description	Q'ty	Applicable Machine No.	Remarks
7- 1	322-82310-10	IGNITION COIL ASS'Y	1		
7- 2	92501-06025	SCREW, panhead	2		
7- 3	92901-06100	WASHER, spring	2		
7- 4	455-85540-00	C.D.I UNIT ASS'Y	1		
7- 5	363-85540-00	BAND	1		
7- 6	92501-06018	SCREW, panhead	2		
7- 7	92901-06200	WASHER, plain	2		
7- 8	136-22316-00	WASHER, chain case	2		

NUMERICAL INDEX

Ref No.	Parts No.	Ref No.	Parts No.	Ref No.	Parts No.
4-10	109-81328-10	2-40	278-14175-00	6- 6	403-25311-00-35
2-20	127-14134-00	2- 7	280-14185-00	5-13	427-24770-00
2-32	127-14161-00	2- 8	280-14187-00	6-12	431-25355-00
2-16	132-14146-00	5-15	288-21659-00	1-13	437-16321-00
2-37	132-14179-00	7- 1	322-82310-10	2-23	438-14116-04
7- 8	136-22316-00	1-12	336-16324-00	1- 5	443-11631-02-96
2-18	137-14133-00	6- 2	345-25104-00	1- 5	443-11631-02-98
2-24	137-14137-00	2- 3	346-14153-70	1- 5	443-11635-02
2- 2	137-14143-28	2-22	360-14112-25	1- 5	443-11636-02
2- 2	137-14143-30	2-11	360-14184-00	1- 5	443-11637-02
2- 2	137-14143-32	2-27	363-14137-00	1- 5	443-11638-02
2- 9	137-14186-00	2-31	363-14155-00	1- 6	445-11610-00
1-14	137-16367-00	2-30	363-14198-00	1- 6	445-11610-10
2-19	152-14123-00	3- 4	363-14782-10	1- 6	445-11610-20
2- 4	168-14190-25	4-18	363-85528-10	1- 6	445-11610-30
3- 5	174-17461-30	7- 5	363-85540-00	1- 6	445-11610-40
3- 5	174-17461-40	2-25	401-14136-00	1- 0-2	445-11630-00
3- 5	174-17461-50	2-29	401-14158-00-33	1- 0-2	445-11630-10
5-14	174-21766-00	5- 1	401-23101-00	1- 0-2	445-11630-20
2-41	183-14197-00	5- 5	401-23118-00	1- 0-2	445-11630-30
2- 1	193-14142-70	5- 4	401-23124-00	1- 0-2	445-11630-40
1- 9	214-11555-01	5- 3	401-23141-00	1- 1	455-11111-00
1-11	214-11557-01	5- 2	401-23170-00	1- 2	455-11311-01
2- 5	214-14195-00	5-10	401-24110-00-05	2- 0-1	455-14101-61
6- 4	214-25194-00	5-13-1	401-24771-00	3- 1	455-14610-00
6- 9	214-25394-00	6- 5	401-25121-00	3- 2	455-14752-00
2-28	246-14126-00	6- 7	401-25304-00	1- 0-1	455-16301-00
2-26	248-14131-00	6-10	401-25321-00	5- 9	455-21721-00
6- 1	248-25111-00-35	6-11	401-25351-00	5-11	455-24244-00
1- 3	251-11181-00	6-13	401-25445-00	5-12	455-24245-00
1- 8	251-11633-00	6-13	401-25447-00	4- 0-1	455-85500-11
2-34	256-14135-00	6-13	401-25449-00	4-15	455-85513-10
2-17	275-14122-00	2- 6	402-14146-00	4-17	455-85514-10
2-12	278-14115-00	2-38	402-14178-00	4- 9	455-85515-10
2-13	278-14117-00	2-10	402-14181-00-33	7- 4	455-85540-00
2-21	278-14141-28	5- 6	402-21240-00	4- 6	455-85541-10
2-33	278-14171-00	5- 7	402-21256-00	4- 2	455-85543-10
2-36	278-14174-00	5- 8	402-21257-00	4- 1	455-85550-10

NUMERICAL INDEX

Ref No.	Parts No.	Ref No.	Parts No.	Ref No.	Parts No.
2-35	802-14173-00				
3- 3	91201-06010				
7- 6	92501-06018				
7- 2	92501-06025				
4-19	92701-06012				
2-15	92901-04100				
4- 4	92901-04100				
4- 8	92901-04100				
4-12	92901-04100				
4-14	92901-04100				
4- 5	92901-04200				
4-16	92901-04200				
7- 3	92901-06100				
7- 7	92901-06200				
1-10	92901-12100				
1-15	93210-98202				
2-39	93220-09001				
1- 7	93310-21679				
6- 3	94416-21114				
6- 8	94418-18115				
1- 4	94701-00074				
4- 3	98501-04008				
4-11	98501-04008				
4-13	98501-04008				
4- 7	98501-04028				
2-14	98503-04015				

www.legends-yamaha-enduros.com

www.legends-yamaha-enduros.com



YAMAHA MOTOR CO., LTD.

PRINTED IN JAPAN

First edition Oct., 1973

(LIT-10014-55-00) (455-28198-80)