



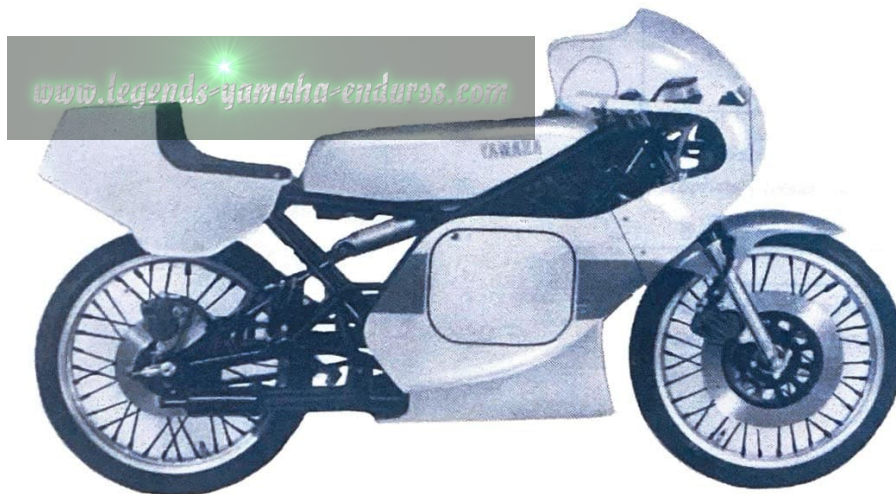
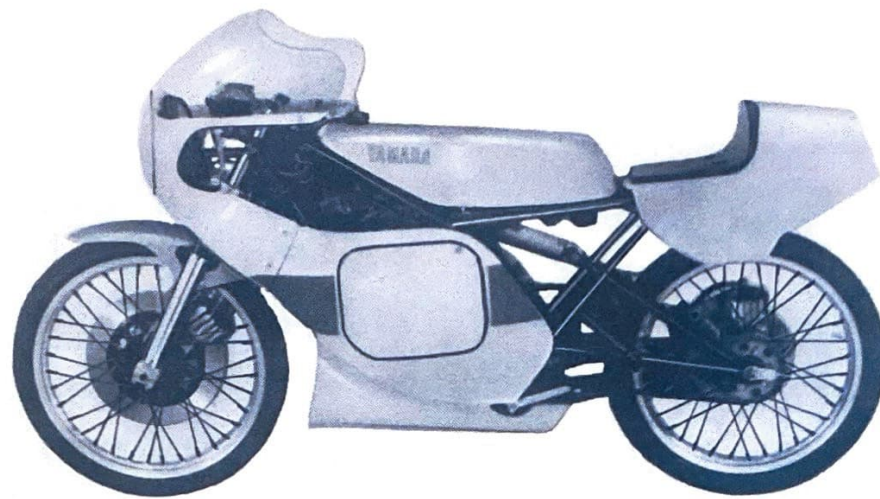
# YAMAHA

## PARTS CATALOGUE

[www.legends-yamaha-enduros.com](http://www.legends-yamaha-enduros.com)

# TZ125H (5F6)

115F6-100E1



**A3**

# FOREWORD

This Parts Catalogue is related to the parts in use for the Yamaha TZ125H (5F6).  
When you are ordering replacement parts for the TZ125H (5F6), refer to this Parts Catalogue and quote both part numbers and part names correctly.

1. Modifications or additions which have been made after issue of the Parts Catalogue will be announced in the Yamaha Parts News.  
It is advisable that according to the Yamaha Parts News you make necessary corrections to the Parts Catalogue on hand to keep it up-to-date.

## 2. Abbreviations

The following abbreviations are used in this Parts Catalogue.

- U.R. Use size (thickness) and/or number as required.
- U.N. Use as many as you need.
- A.P. Alternate Parts
- L.M. Local Made
- F# Frame No. (Applicable machine No.)

3. The parts marked with (\*) in the parts number column of this Catalogue are not supplied with by Yamaha, those have to be found locally.

4. Parts, which are to be supplied in the form of assemblies, are listed with an indentation of one letter's space, and a dot ( . ) is put against the name of each part.

**EXAMPLE** CARBURETOR ASS'Y  
                   . JET, pilot  
                   . NOZZLE, main

## 5. Indication of No. of constituent parts for assembly

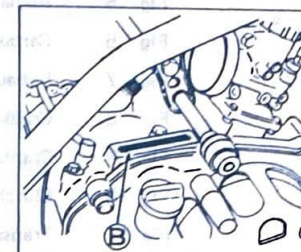
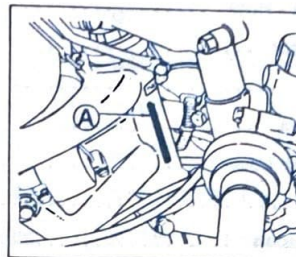
The numeral appearing to the right of each constituent part under the description indicates the quantity of such parts for each individual assembly unit.

**EXAMPLE**

Part No.	Description	Q'ty	Remarks
2F5-83310-60	FRONT FLASHER LIGHT ASS'Y	2	
115-83311-60	. BULB (6V-18W)	1	
1M1-83309-60	. REFLECTOR	1	

## 6. Initial Serial No. and Color Code

(A) Frame Serial No.	3V3-002101 and following
(B) Engine Serial No.	3V3-002101 and following



Color Code	Color Name	Abbreviate
E1	Chappy Red	CPR

7. Applicable colors of graphics are represented in the "Remarks" column by the letter(s) appropriately picked out of the full word(s) showing such colors.

**EXAMPLE**

Part No.	Description	Q'ty	Remarks
2N4-24110-00-X5	FUEL TANK COMP.	1	MAXIM RED
3J1-24240-10	. GRAPHIC, fuel tank set	1	for MXR



# CONTENTS

## ENGINE

Fig. 1	Cylinder .....	1
Fig. 2	Crankshaft · Piston .....	2
Fig. 3	C.D.I. Magneto .....	3
Fig. 4	Water Pump .....	4
Fig. 5	Radiator · Hose .....	5
Fig. 6	Carburetor .....	6
Fig. 7	Exhaust .....	9
Fig. 8	Crankcase .....	10
Fig. 9	Crankcase Cover .....	11
Fig. 10	Clutch .....	12
Fig. 11	Transmission .....	14
Fig. 12	Tachometer Gear .....	16
Fig. 13	Shift Cam · Fork .....	17
Fig. 14	Shift Shaft · Pedal .....	18

## CHASSIS

Fig. 15	Frame .....	19
Fig. 16	Front Fender · Rear Fender .....	20
Fig. 17	Rear Arm .....	21
Fig. 18	Rear Suspension .....	22
Fig. 19	Steering .....	23
Fig. 20	Front Fork .....	24
Fig. 21	Fuel Tank .....	25
Fig. 22	Seat .....	26
Fig. 23	Front Wheel .....	27
Fig. 24	Front Brake Caliper .....	28
Fig. 25	Rear Wheel .....	29
Fig. 26	Rear Brake Caliper .....	31
Fig. 27	Handlebar · Cable .....	32
Fig. 28	Front Master Cylinder .....	33
Fig. 29	Rear Master Cylinder .....	34
Fig. 30	Cowling .....	36

Fig. 31	Meter .....	37
Fig. 32	Electrical 1 .....	38
Fig. 33	Handle Switch · Lever .....	39

## ALTERNATE PARTS

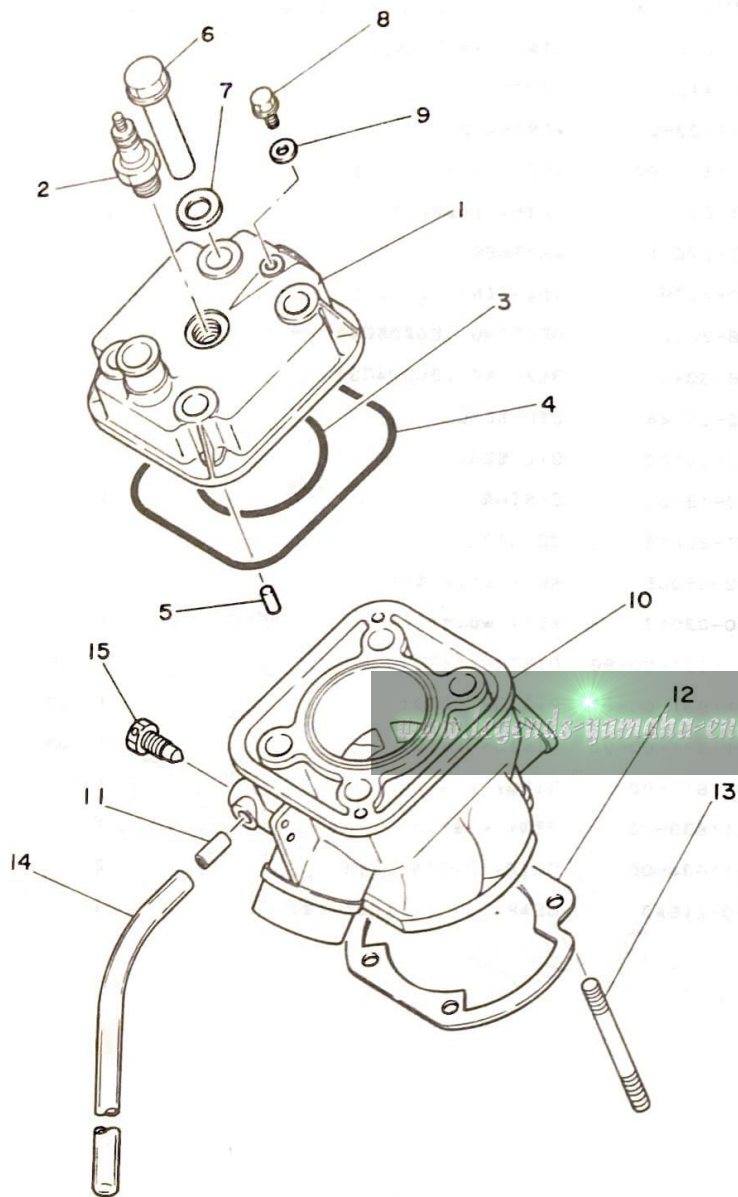
Fig. 34	Alternate (Chassis) .....	40
---------	---------------------------	----

## INDEX

Numerical Index
Parts Name Index



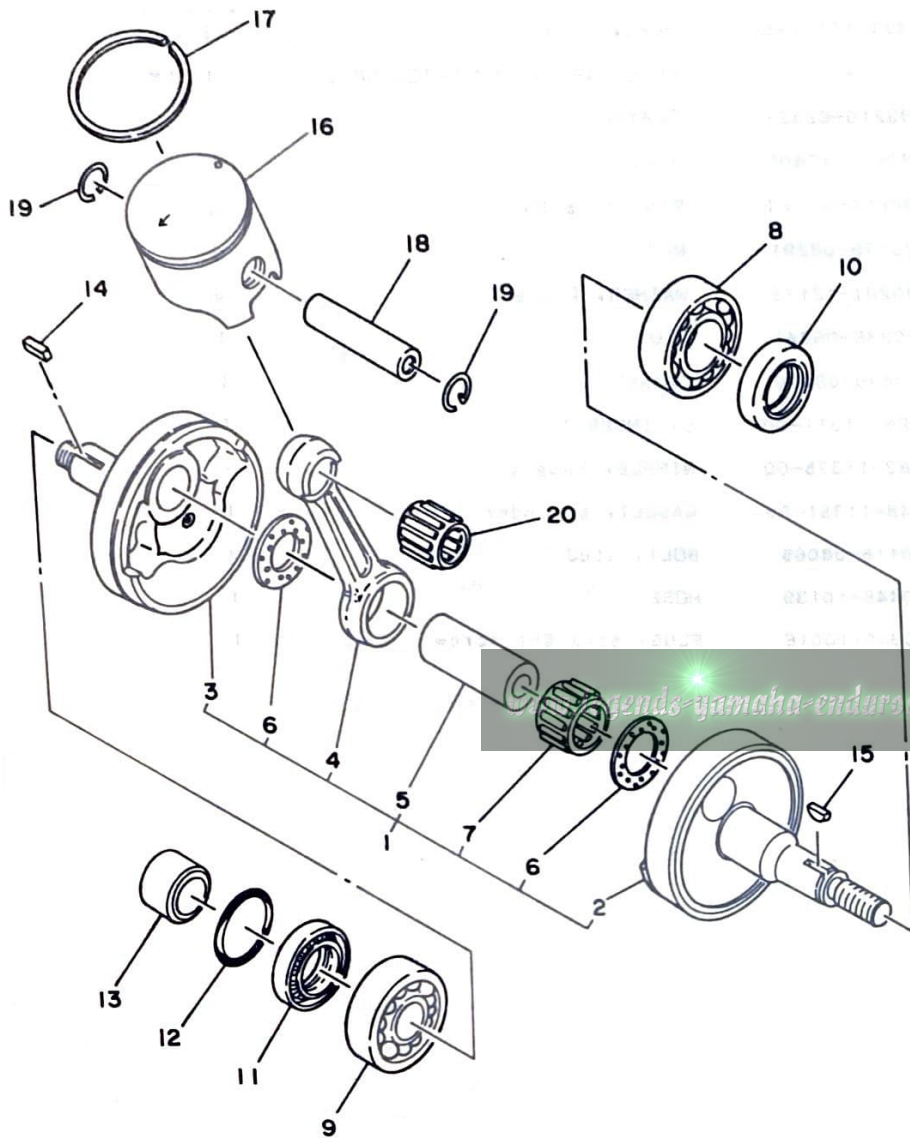
FIG. 1 CYLINDER



REF. NO.	PART NO.	DESCRIPTION	Q'TY	REMARKS
1	3V3-11111-00	HEAD, cylinder 1	1	
2	*	PLUG, sPark (CHAMPION N82G)	1	LM
3	93210-62323	O-RING	1	
4	93211-17405	O-RING	1	
5	90250-06013	PIN, straight	2	
6	90179-08291	NUT	4	
7	90201-12172	WASHER, Plate	4	
8	90338-06041	PLUG	1	
9	90430-06070	GASKET	1	
10	5F6-11311-00	CYLINDER 1	1	
11	383-11375-00	NIPPLE, hose 1	1	
12	248-11351-00	GASKET, cylinder	1	
13	90116-08065	BOLT, stud	4	
14	90445-10139	HOSE	1	
15	90340-10016	PLUG, straight screw	1	



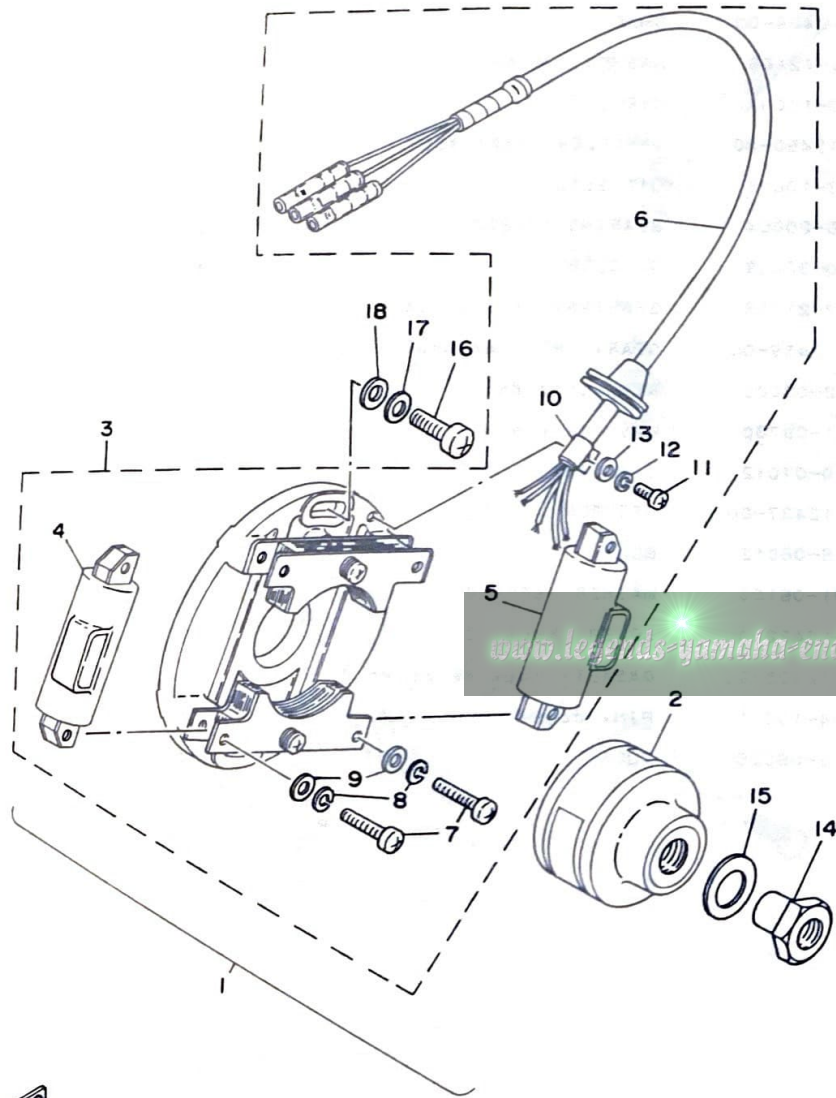
FIG. 2 CRANKSHAFT-PISTON



REF. NO.	PART NO.	DESCRIPTION	Q'TY	REMARKS
1	5F6-11400-00	CRANKSHAFT ASSY	1	
2	1W1-11412-01	•CRANK 1	1	
3	1W1-11422-01	•CRANK 2	1	
4	3V3-11651-00	•ROD, connecting	1	
5	3M5-11681-00	•PIN, crank 1	1	
6	90209-22071	•WASHER	2	
7	93310-422H0	•BEARING, cylindrical	1	
8	93306-20529	BEARING (B6205C4)	1	
9	93306-30421	BEARING (B6304C3)	1	
10	93102-25144	OIL SEAL	1	
11	93103-28100	OIL SEAL	1	
12	93210-18023	O-RING	1	
13	90387-20488	COLLAR	1	
14	90282-05005	KEY, straight	1	
15	90280-03017	KEY, woodruff	1	
16	5F6-11631-00-96	PISTON (STD)	1	UR
	5F6-11631-00-97	PISTON (STD)	1	UR
	5F6-11631-00-98	PISTON (STD)	1	UR
17	240-11611-00	RING, Piston	1	
18	137-11633-00	PIN, Piston	1	
19	4A0-11634-00	CLIP, Piston Pin	2	
20	93310-216A3	BEARING, cylindrical	1	



FIG. 3 C.D.I MAGNETO

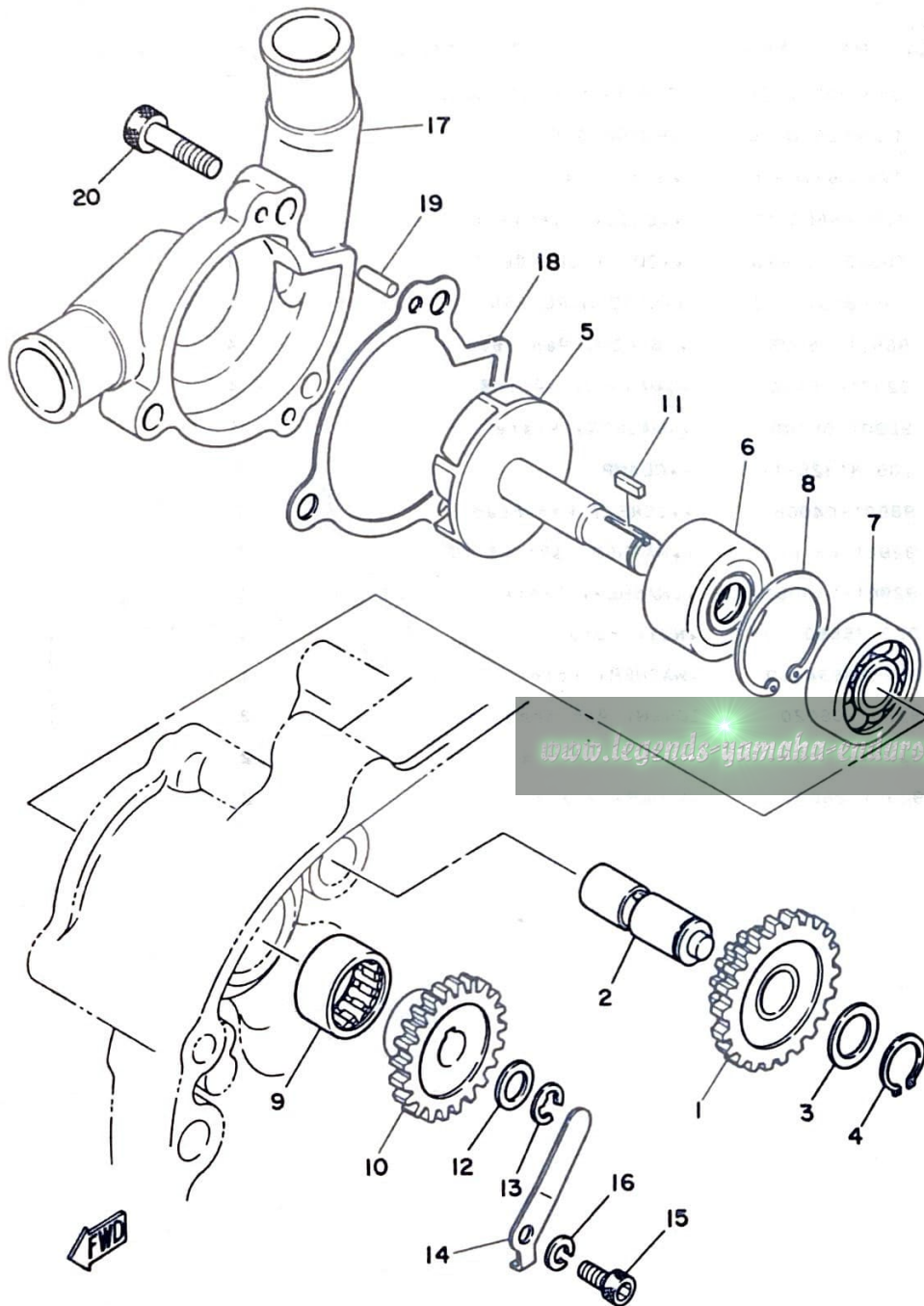


REF. NO.	PART NO.	DESCRIPTION	Q'TY	REMARKS
1	3V3-85500-10	C.D.I. MAGNETO ASSY	1	
2	1G8-85550-10	•ROTOR ASSY	1	
3	3V3-85510-10	•STATOR ASSY	1	
4	565-85566-10	••COIL, charge 1	1	
5	565-85567-10	••COIL, charge 2	1	
6	565-85515-10	••LEAD WIRE ASSY	1	
7	98501-05025	••SCREW, Pan head	4	
8	92901-05100	••WASHER, sPring	4	
9	92901-05600	••WASHER, Plate	4	
10	109-81328-11	••CLAMP	1	
11	98501-04008	••SCREW, Pan head	1	
12	92901-04100	••WASHER, sPring	1	
13	92901-04600	••WASHER, Plate	1	
14	322-85553-10	•NUT, rotor	1	
15	322-85554-10	•WASHER, rotor	1	
16	92501-06020	SCREW, Pan head	2	
17	92901-06100	WASHER, sPring	2	
18	92901-06600	WASHER, Plate	2	





FIG. 4 WATER PUMP

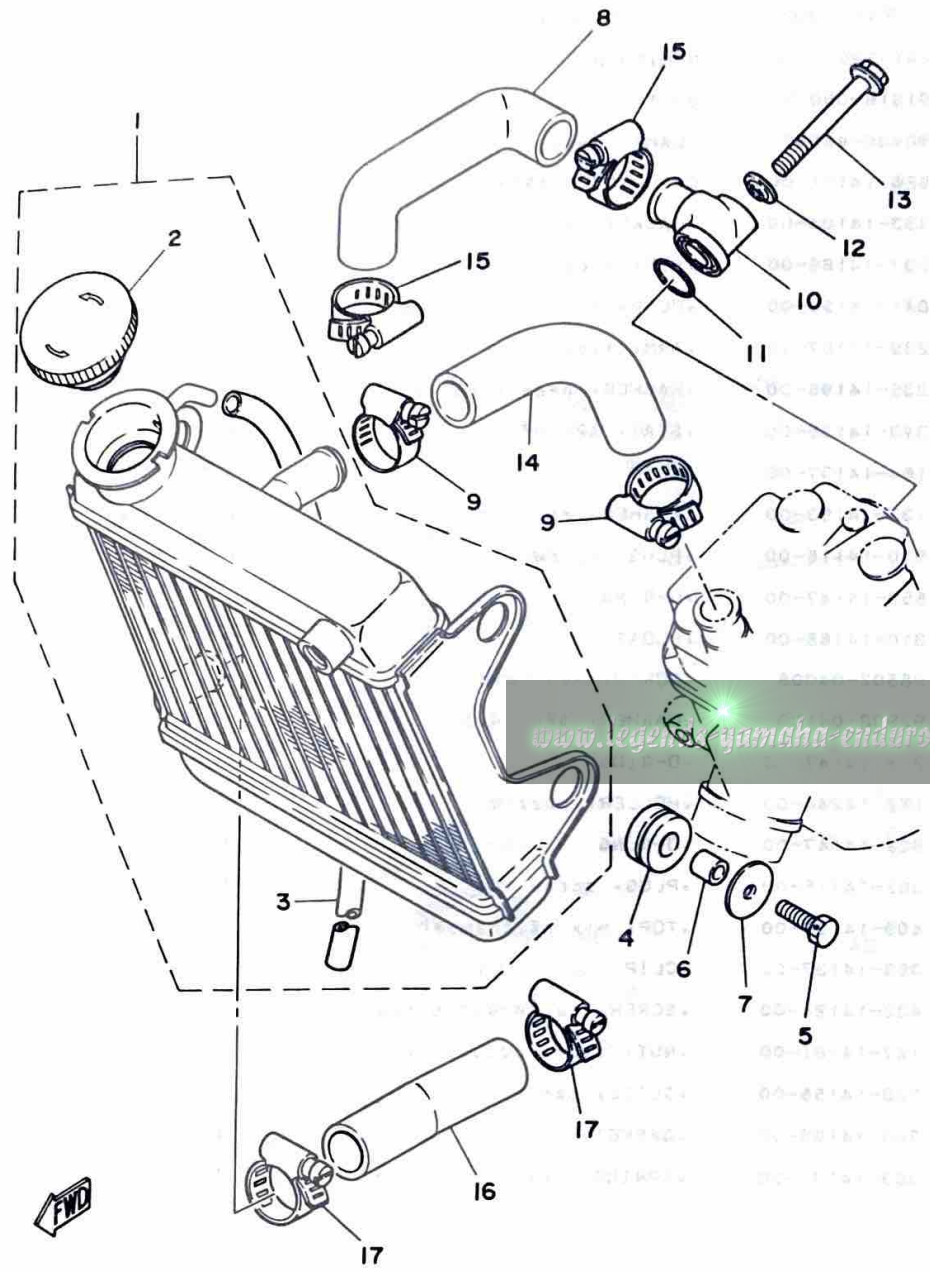


REF. NO.	PART NO.	DESCRIPTION	Q'TY	REMARKS
1	3V3-12436-00	GEAR, drive (14/22T)	1	
2	3V3-12426-00	SHAFT	1	
3	90201-12166	WASHER, Plate	1	
4	93410-12003	CIRCLIP	1	
5	3V3-12450-00	IMPELLER SHAFT ASSY	1	
6	93103-10075	OIL SEAL	1	
7	93306-20004	BEARING (B6200)	1	
8	93420-32039	CIRCLIP	1	
9	93317-21715	BEARING, cylindrical	1	
10	3V3-12459-00	GEAR, imPeller shaft (22T)	1	
11	90282-03003	KEY, straight	1	
12	90201-09780	WASHER, Plate	1	
13	93430-07012	CIRCLIP	1	
14	3V3-12437-00	STOPPER	1	
15	91316-06012	BOLT	1	
16	92901-06100	WASHER, sPring	1	
17	3V3-12422-00	COVER, housing	1	
18	3V3-12428-00	GASKET, housing cover 2	1	
19	93604-10011	PIN, dowel	2	
20	91316-06025	BOLT	2	

**B5**

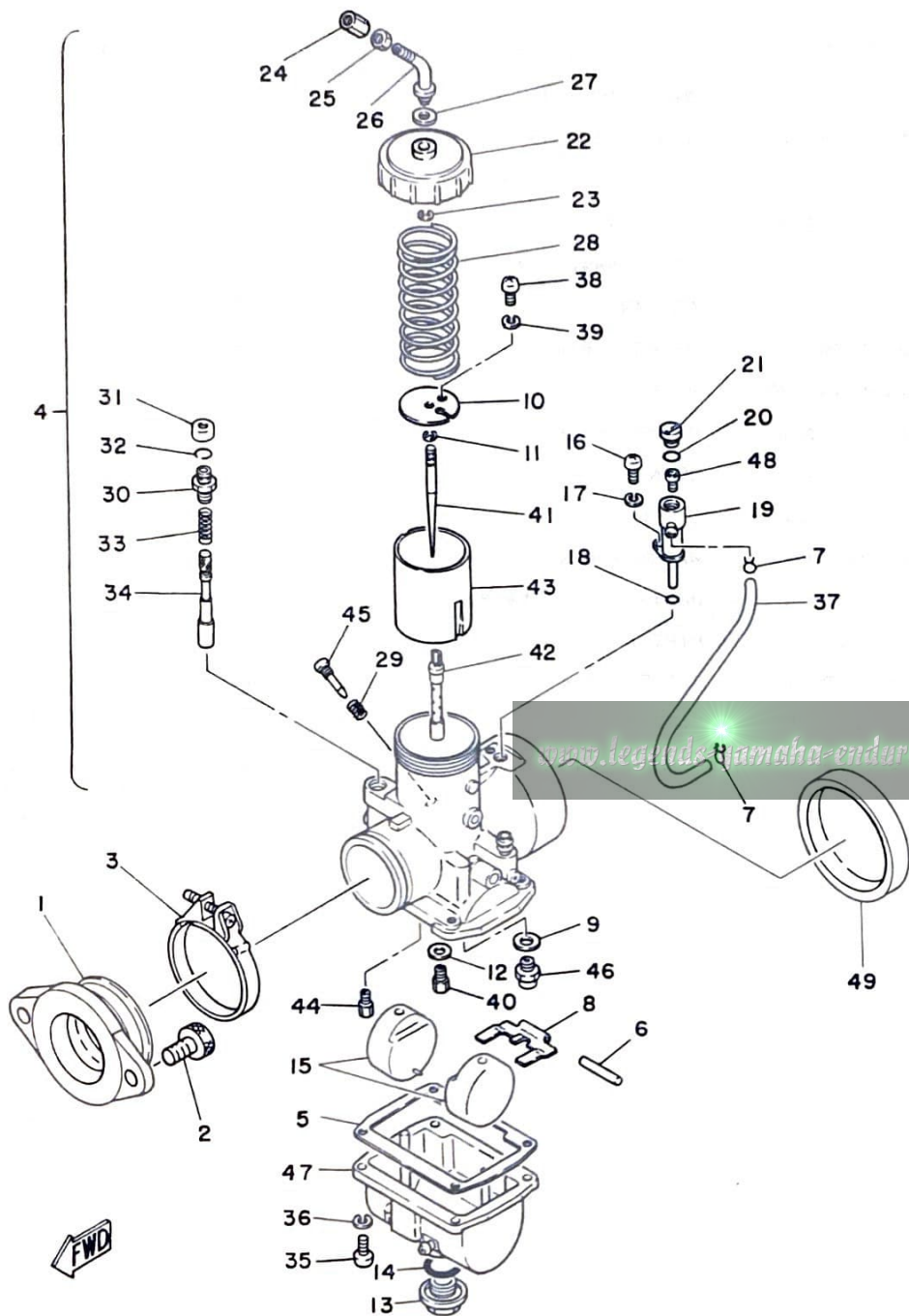
FIG. 5 RADIATOR HOSE

REF. NO.	PART NO.	DESCRIPTION	Q'TY	REMARKS
1	3V3-12460-00	RADIATOR ASSY	1	
2	1X2-12462-00	•CAP, radiator	1	
3	383-12463-00	•PIPE, breather	1	
4	90480-20131	GROMMET	4	
5	90103-06016	BOLT, head with hole	4	
6	90387-06518	COLLAR	4	
7	90201-06074	WASHER, Plate	4	
8	3V3-12481-00	PIPE 1	1	
9	90460-30043	CLAMP, hose	2	
10	3V3-12479-00	JOINT	1	
11	93210-20027	O-RING	1	
12	90210-08001	WASHER, seal	1	
13	90105-08135	BOLT, washer based	1	
14	3V3-12482-00	PIPE 2	1	
15	90460-30043	CLAMP, hose	2	
16	3V3-12483-00	PIPE 3	1	
17	90460-30043	CLAMP, hose	2	



**B6**

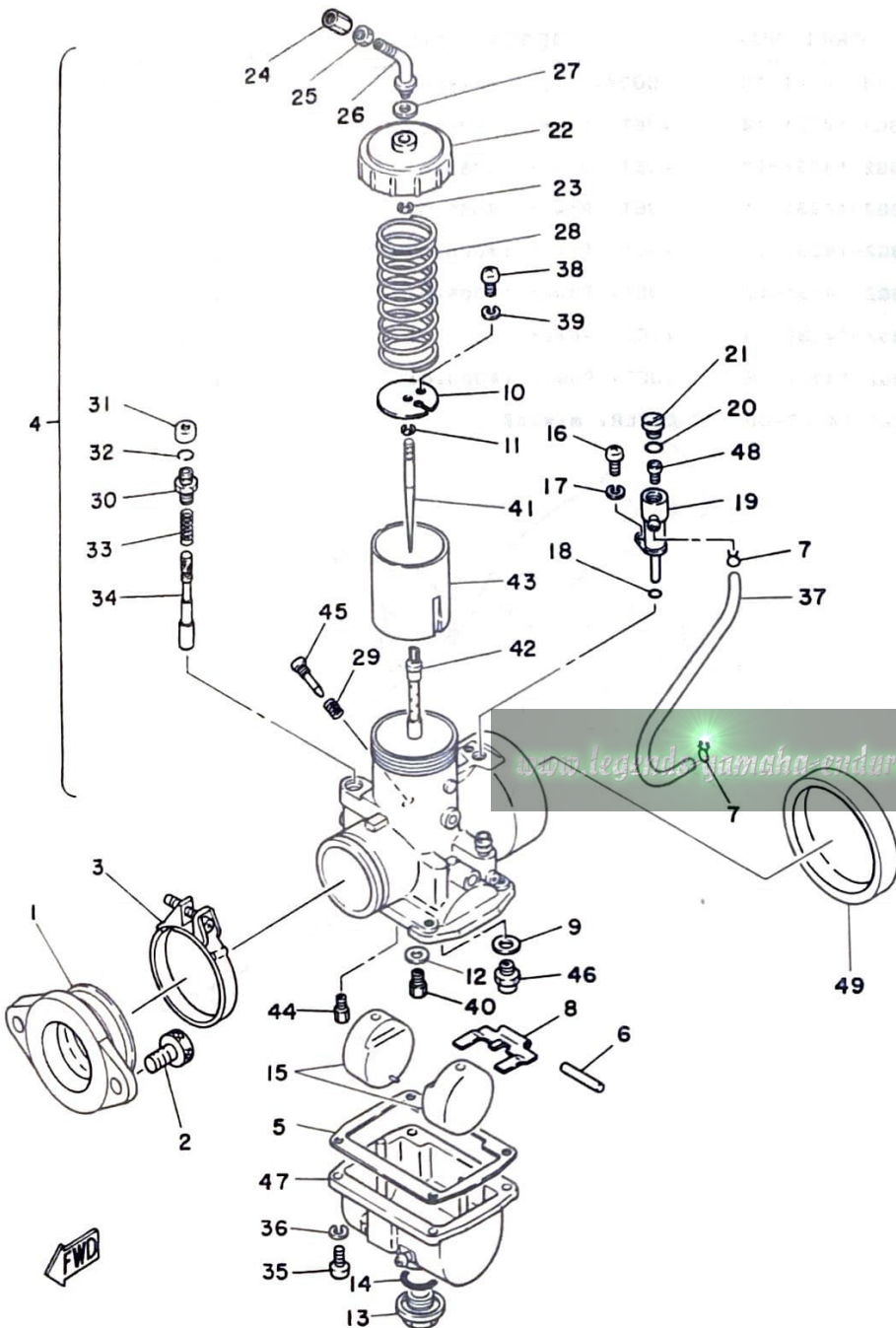
FIG. 6 CARBURETOR



REF. NO.	PART NO.	DESCRIPTION	Q'TY	REMARKS
1	4A1-13555-00	MANIFOLD, intake	1	
2	91316-08015	BOLT	2	
3	90460-49058	CLAMP, hose	1	
4	5F6-14101-00	CARBURETOR ASSY 1	1	
5	483-14184-00	.GASKET, float chamber	1	
6	537-14186-00	.PIN, float	1	
7	8A7-14139-00	.CLIP, Pipe	2	
8	239-14187-00	.ARM, float	1	
9	239-14195-00	.WASHER, needle valve	1	
10	3V3-14136-00	.SEAT, sPring	1	
11	164-14137-00	.CLIP	1	
12	137-14153-00	.WASHER, main Jet	1	
13	500-14115-00	.PLUG, screw	1	
14	558-14147-00	.O-RING	1	
15	310-14185-00	.FLOAT	2	
16	98502-04008	.SCREW, Pan head	1	
17	92902-04100	.WASHER, sPring	1	
18	214-14147-00	.O-RING	1	
19	1X2-14244-00	.HOLDER, nozzle	1	
20	822-14147-00	.O-RING	1	
21	3G2-14115-00	.PLUG, screw	1	
22	409-14158-00	.TOP, mixing chamber	1	
23	363-14137-00	.CLIP	1	
24	432-14124-00	.SCREW, cable adjusting	1	
25	127-14161-00	.NUT, cable adjusting	1	
26	363-14155-00	.GUIDE, cable	1	
27	363-14198-00	.GASKET	1	
28	363-14131-00	.SPRING, throttle valve	1	

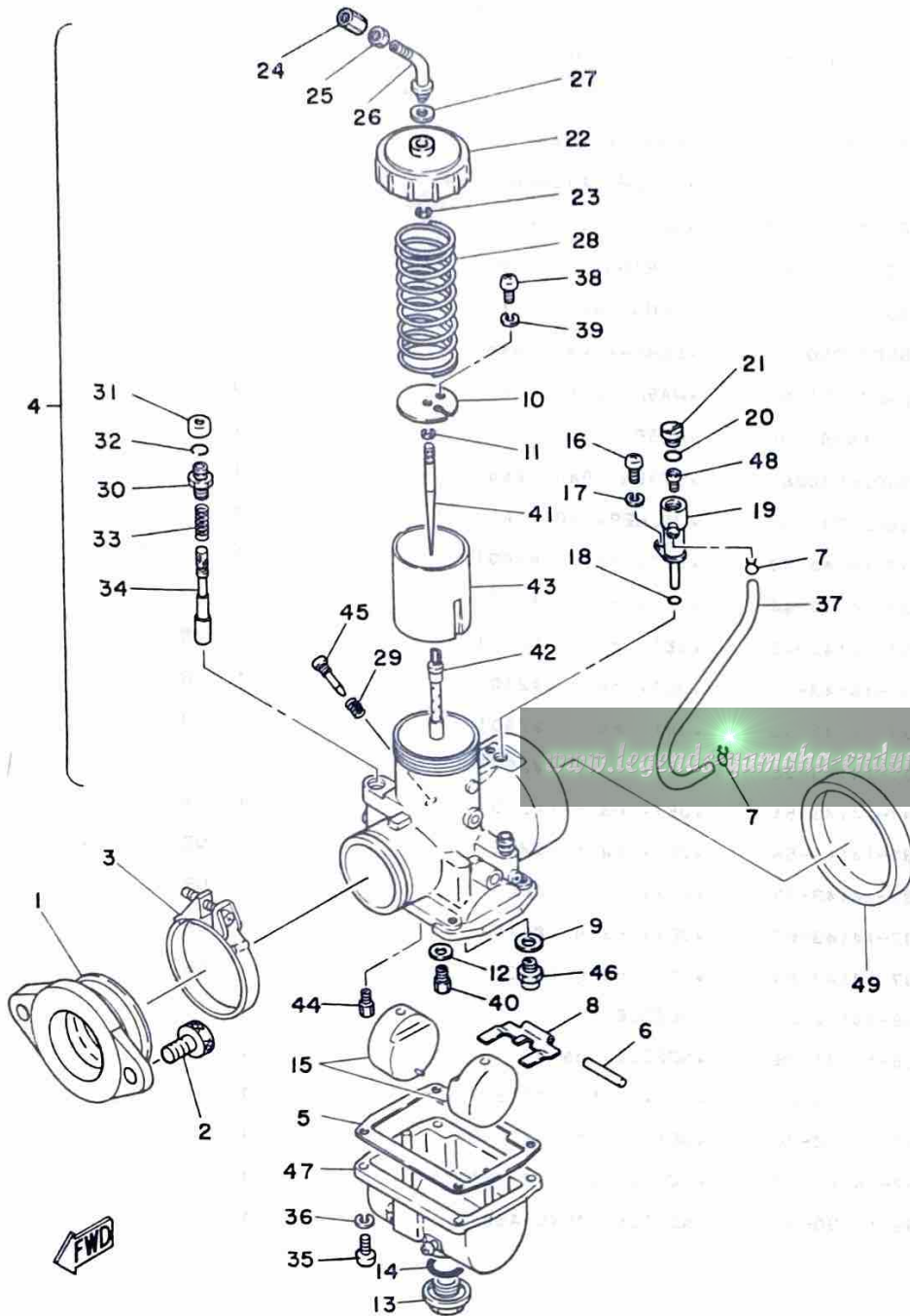


FIG. 6 CARBURETOR



REF. NO.	PART NO.	DESCRIPTION	Q'TY	REMARKS
29	127-14134-00	•SPRING, air adjusting	1	
30	152-14174-00	•CAP, Plunger	1	
31	637-14173-00	•COVER, Plunger cap	1	
32	353-14138-00	•CLIP, Plunger	1	
33	156-14135-00	•SPRING, Plunger	1	
34	1G8-14171-00	•PLUNGER, starter	1	
35	98502-05015	•SCREW, Pan head	4	
36	92902-05100	•WASHER, spring	4	
37	3V3-14987-00	•HOSE	1	
38	98502-04008	•SCREW, Pan head	1	
39	92902-04100	•WASHER, spring	1	
40	137-14143-60	•JET, main (#300)	1	STD
	137-14143-44	•JET, main (#220)	1	UR
	137-14143-46	•JET, main (#230)	1	UR
	137-14143-48	•JET, main (#240)	1	UR
	137-14143-50	•JET, main (#250)	1	UR
	137-14143-52	•JET, main (#260)	1	UR
	137-14143-54	•JET, main (#270)	1	UR
	137-14143-56	•JET, main (#280)	1	UR
	137-14143-58	•JET, main (#290)	1	UR
	137-14143-62	•JET, main (#310)	1	UR
	137-14143-64	•JET, main (#320)	1	UR
41	239-14116-22	•NEEDLE	1	
42	239-14141-36	•NOZZLE, main	1	
43	3V3-14112-20	•VALVE, throttle 1	1	
44	193-14142-70	•JET, Pilot (#70.0)	1	
45	152-14123-00	•SCREW, air adjusting	1	
46	239-14190-33	•NEEDLE VALVE ASSY	1	

FIG. 6 CARBURETOR



REF. NO.	PART NO.	DESCRIPTION	Q'TY	REMARKS
47	3V3-14181-16	.BODY, float chamber 1	1	
48	3G2-14231-14	.JET, Power (#070.0)	1	STD
	3G2-14231-10	.JET, Power (#050.0)	1	UR
	3G2-14231-11	.JET, Power (#055.0)	1	UR
	3G2-14231-12	.JET, Power (#060.0)	1	UR
	3G2-14231-13	.JET, Power (#065.0)	1	UR
	3G2-14231-15	.JET, Power (#075.0)	1	UR
	3G2-14231-16	.JET, Power (#080.0)	1	UR
49	240-14157-00	COVER, mixing	1	

**B9**

FIG. 7 EXHAUST

REF. NO.	PART NO.	DESCRIPTION	Q'TY	REMARKS
1	5F6-14610-00	EXHAUST PIPE ASSY 1	1	
2	93210-43404	O-RING	2	
3	90507-20030	SPRING, tension	2	
4	90480-22269	GROMMET	1	
5	90387-081A3	COLLAR	1	
6	97301-08030 <i>35</i>	BOLT	1	
7	92901-08600	WASHER, Plate	1	
8	90201-08114	WASHER, Plate	1	
9	95601-08100	NUT, u	1	

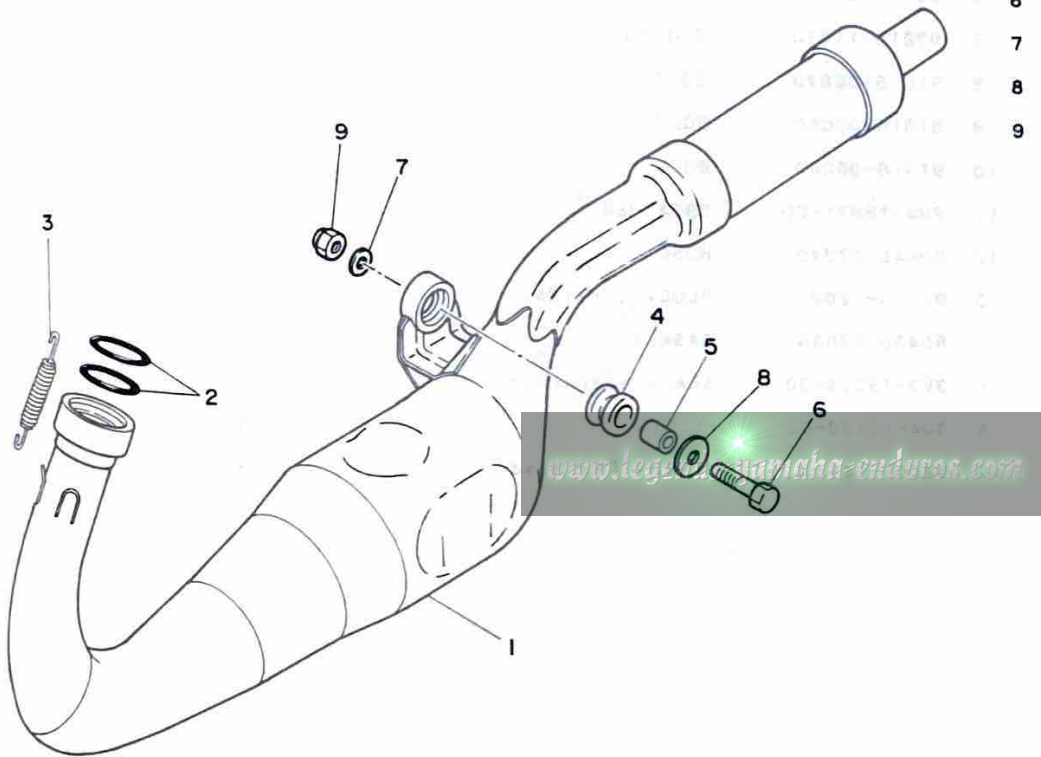
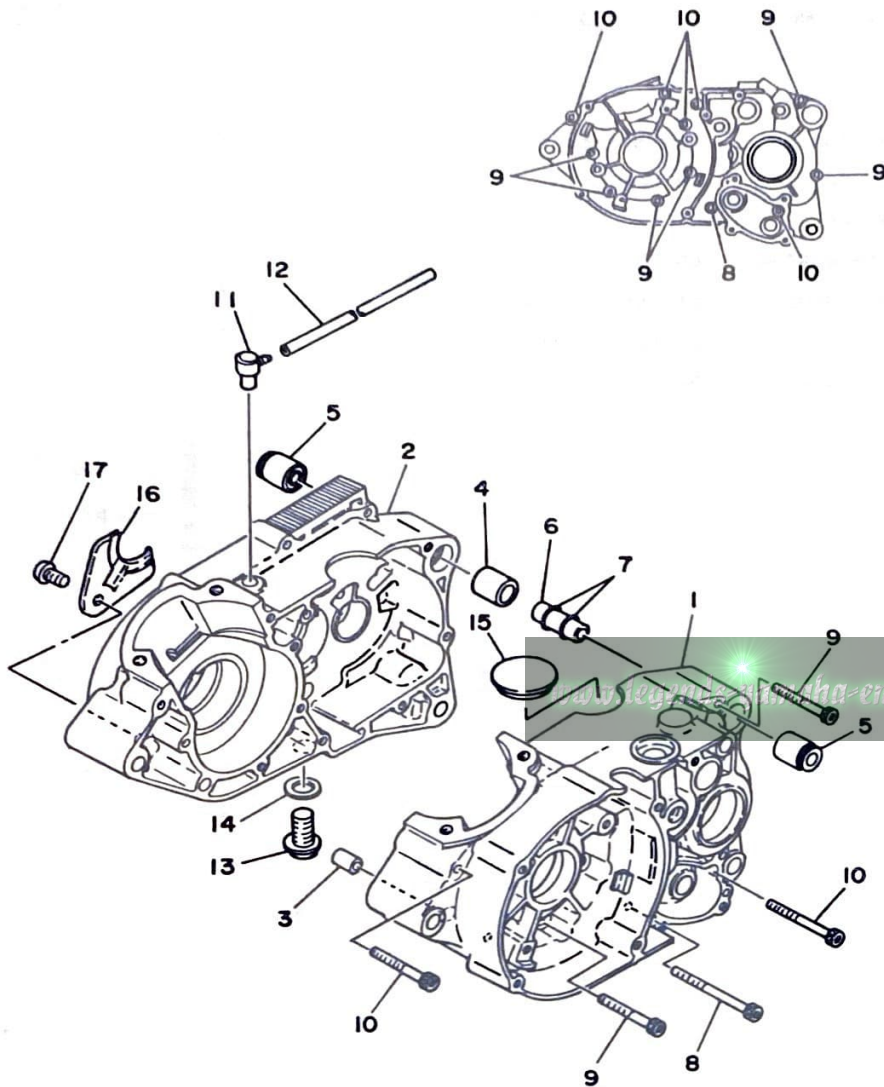




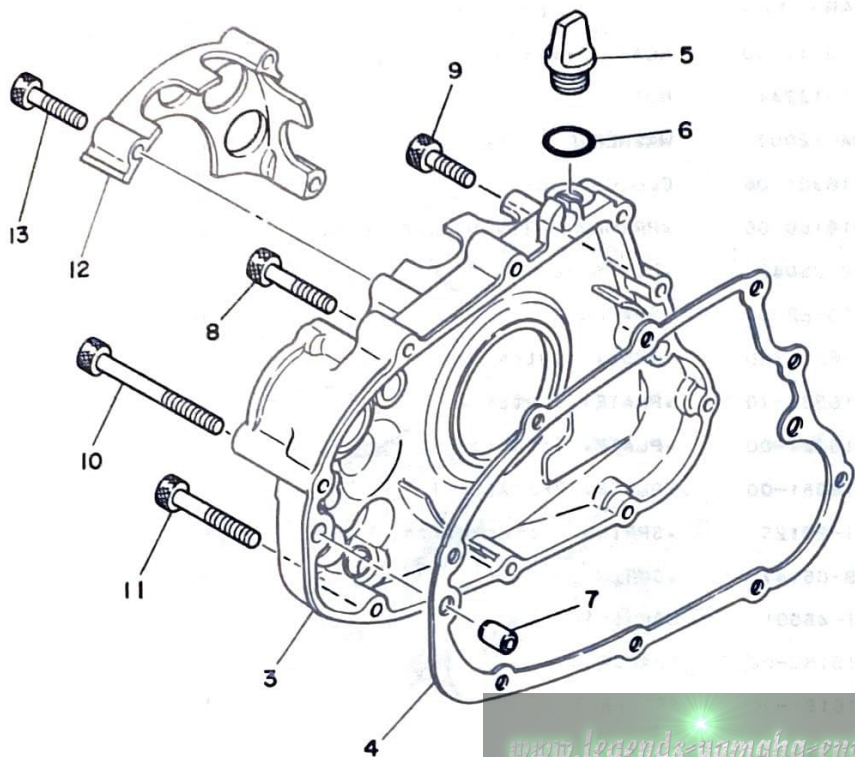
FIG. 8 CRANKCASE



REF. NO.	PART NO.	DESCRIPTION	Q'TY	REMARKS
1	5F6-15111-00	CRANKCASE 1	1	
2	3V3-15121-00	CRANKCASE 2	1	
3	91810-02014	PIN, dowel	1	
4	91810-19020	PIN, dowel	1	
5	328-15316-00	DAMPER, engine mount 1	2	
6	401-15317-00	SPACER, engine mount	1	
7	93210-11073	O-RING	2	
8	91316-06070	BOLT	1	
9	91316-06050	BOLT	6	
10	91316-06060	BOLT	5	
11	2N4-15371-00	BREATHER	1	
12	90445-07340	HOSE	1	
13	90340-12021	PLUG, straight screw	1	
14	90430-12038	GASKET	1	
15	3V3-15315-00	SEAL, crankcase	1	
16	304-15128-00	HOLDER	1	
17	92501-08010	SCREW, Pan head	1	



FIG. 9 CRANKCASE COVER



REF. NO.	PART NO.	DESCRIPTION	Q'TY	REMARKS
1	3V3-15411-00	COVER, crankcase 1	1	
2	91316-06030	BOLT	5	
3	5F6-15431-00	COVER, crankcase 3	1	
4	537-15451-00	GASKET, crankcase cover	1	
5	3V3-15362-00	PLUG, oil level	1	
6	93210-14104	O-RING	1	
7	91810-02014	PIN, dowel	2	
8	91316-06040	BOLT	5	
9	91316-06025	BOLT	2	
10	91316-06080	BOLT	1	
11	91316-06050	BOLT	1	
12	3V3-15416-00	COVER, oil pump	1	
13	91316-06035	BOLT	3	

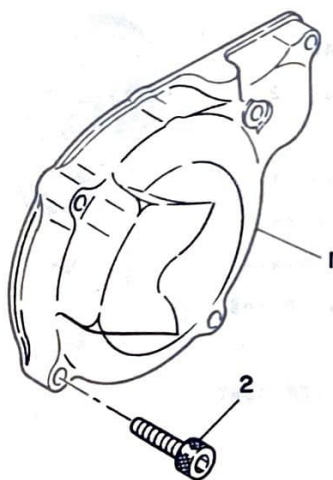
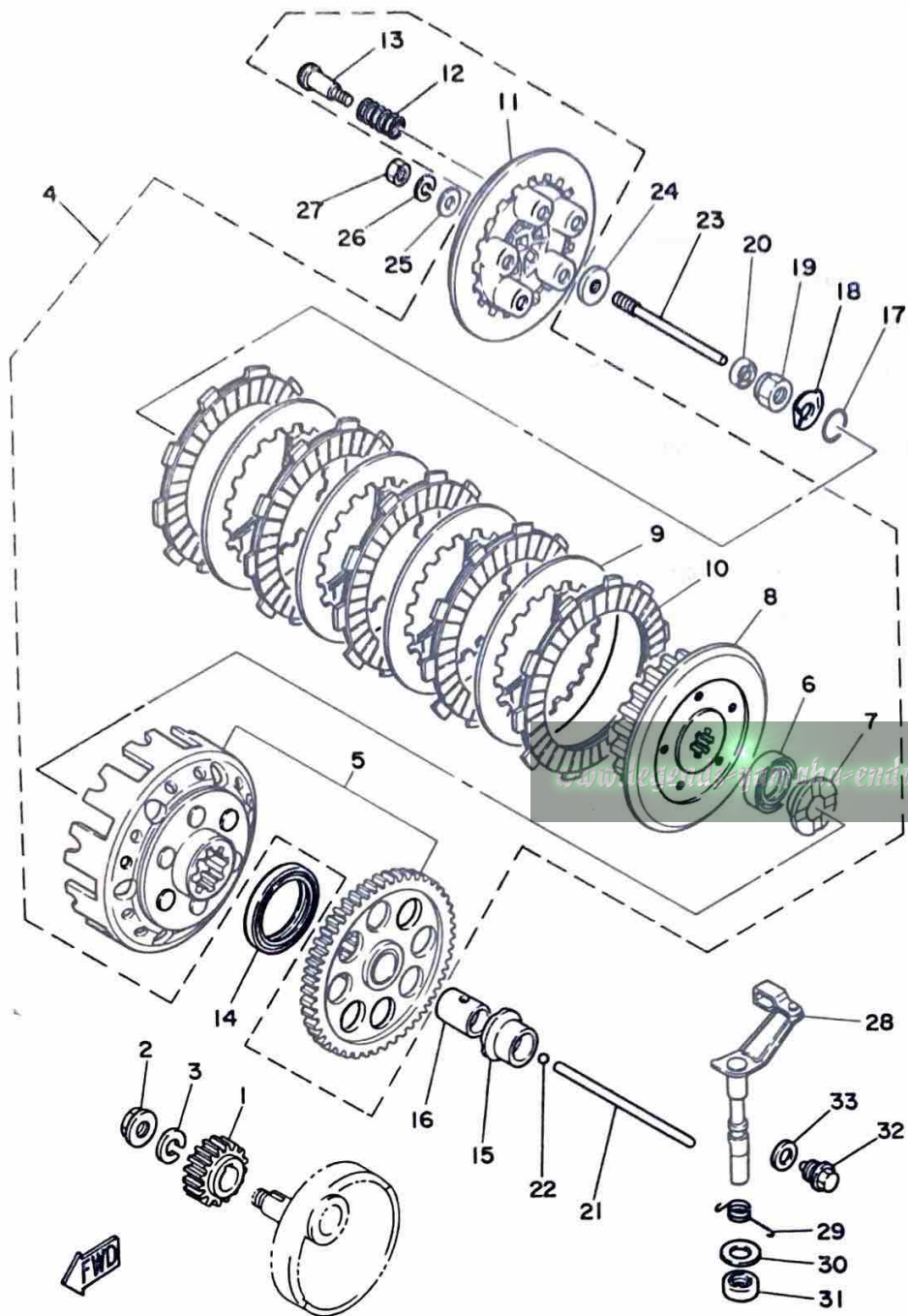


FIG. 10 CLUTCH

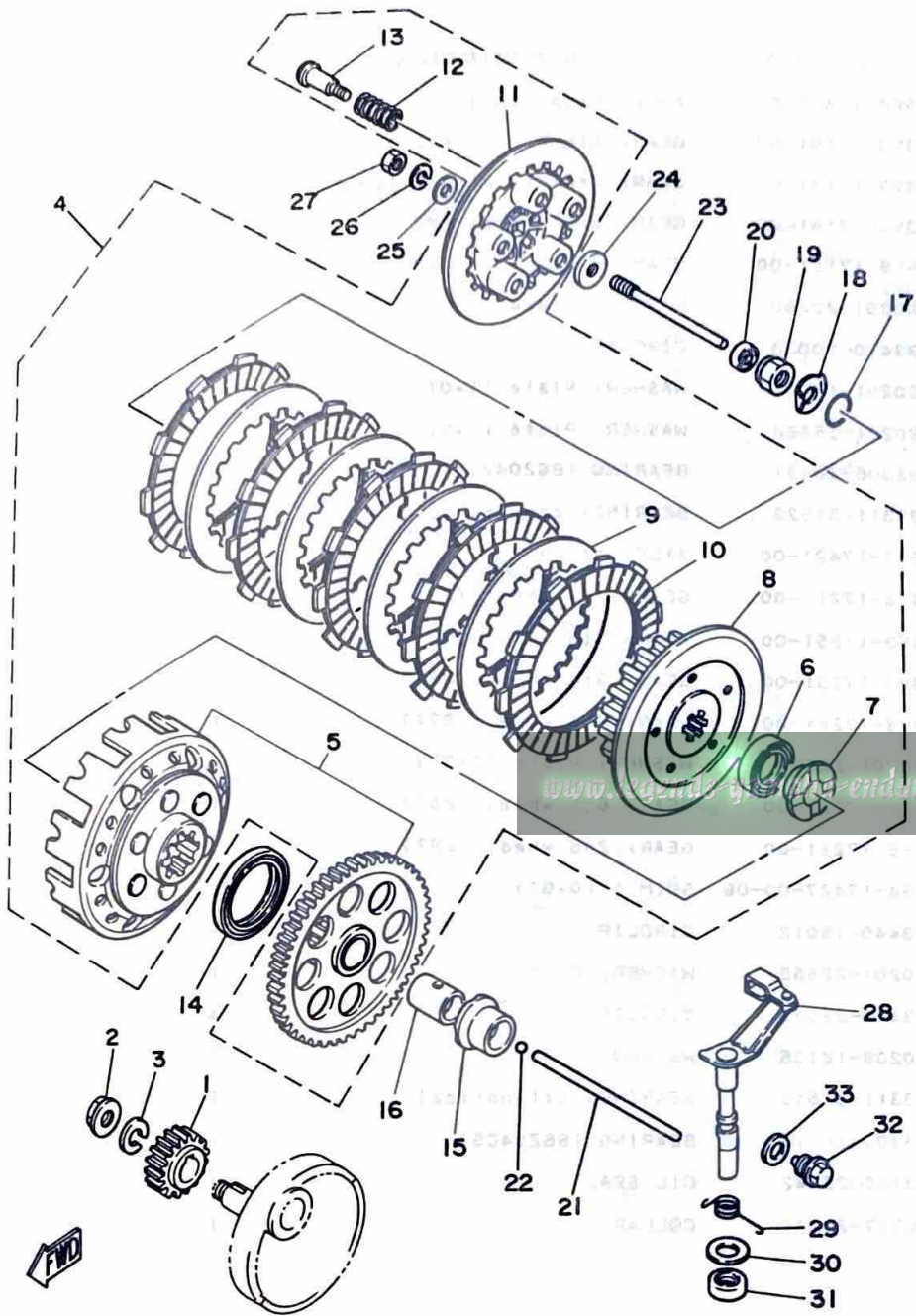


REF. NO.	PART NO.	DESCRIPTION	Q'TY	REMARKS
1	3V3-16111-00	GEAR, Primary drive (21T)	1	
2	90179-12244	NUT	1	
3	90204-12007	WASHER, sPrinG	1	
4	3V3-16301-00	CLUTCH ASSY	1	
5	3V3-16150-00	•PRIMARY DRIVEN GEAR COMP.	1	
6	93102-25045	•OIL SEAL	1	
7	3V3-16182-00	•SPACER 2	1	
8	3V3-16371-00	•BOSS, clutch	1	
9	137-16325-70	•PLATE, clutch 2	4	
10	3V3-16321-00	•PLATE, friction	5	
11	3V3-16351-00	•PLATE, Pressure 1	1	
12	90501-20125	•SPRING, compression	5	
13	90149-05147	•SCREW	5	
14	93101-45091	OIL SEAL	1	
15	3V3-16183-00	SPACER 3	1	
16	3V3-16181-00	SPACER 1	1	
17	93210-15151	O-RING	1	
18	90215-12007	WASHER, lock	1	
19	90179-12296	NUT	1	
20	93104-05065	OIL SEAL	1	
21	1W1-16357-00	ROD, Push 2	1	
22	93503-16010	BALL	1	
23	3V3-16356-00	ROD, Push 1	1	
24	3V3-16358-00	PLATE, Push	1	
25	92901-06200	WASHER, Plain	1	
26	92901-06100	WASHER, sPrinG	1	
27	95301-06600	NUT	1	
28	3V3-16380-00	PUSH LEVER ASSY	1	

**B13**



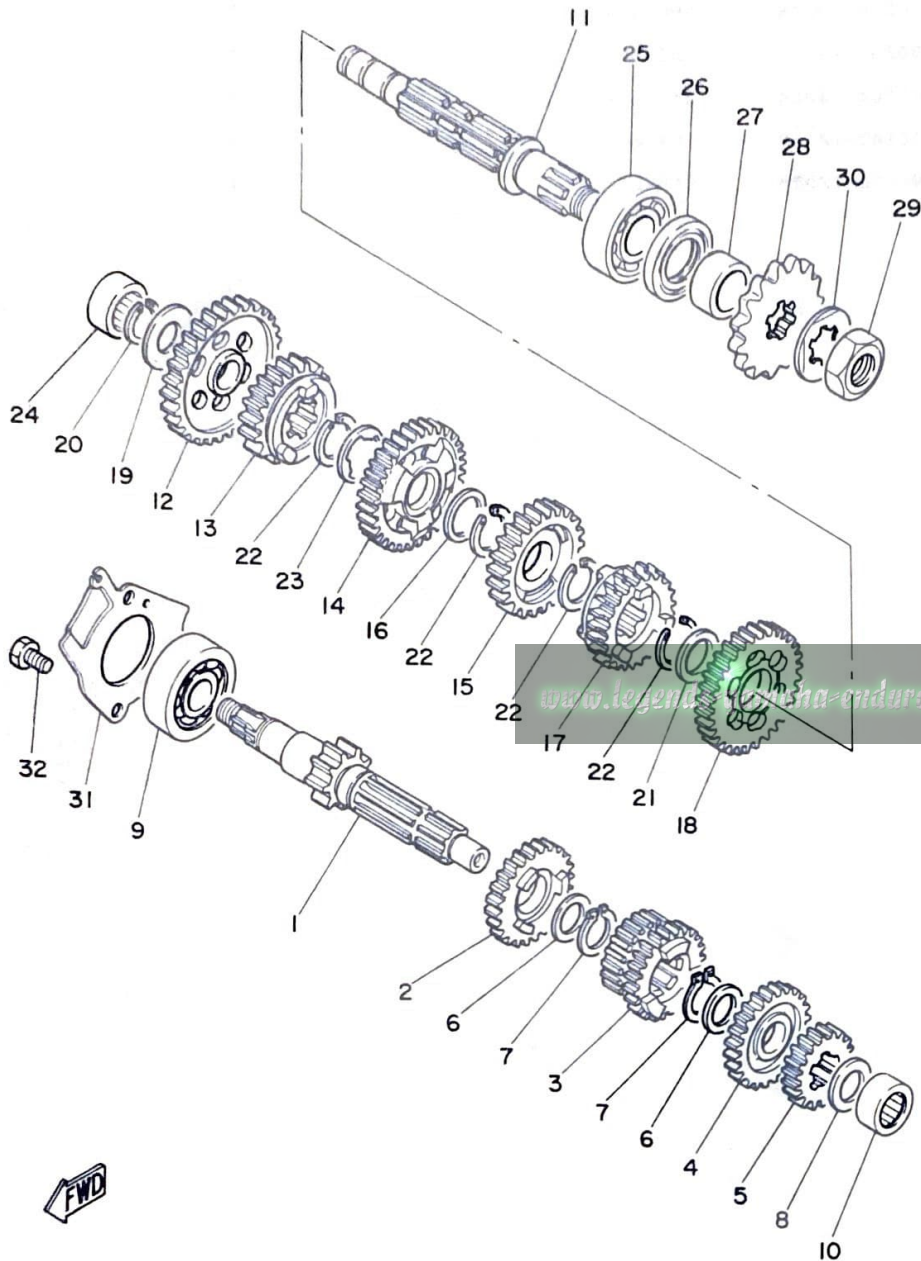
FIG. 10 CLUTCH



REF. NO.	PART NO.	DESCRIPTION	Q'TY	REMARKS
29	90508-20345	SPRING, torsion	1	
30	90201-14217	WASHER, Plate	1	
31	93104-14004	OIL SEAL	1	
32	90149-12140	SCREW	1	
33	90430-12038	GASKET	1	

**B14**

FIG. 11 TRANSMISSION

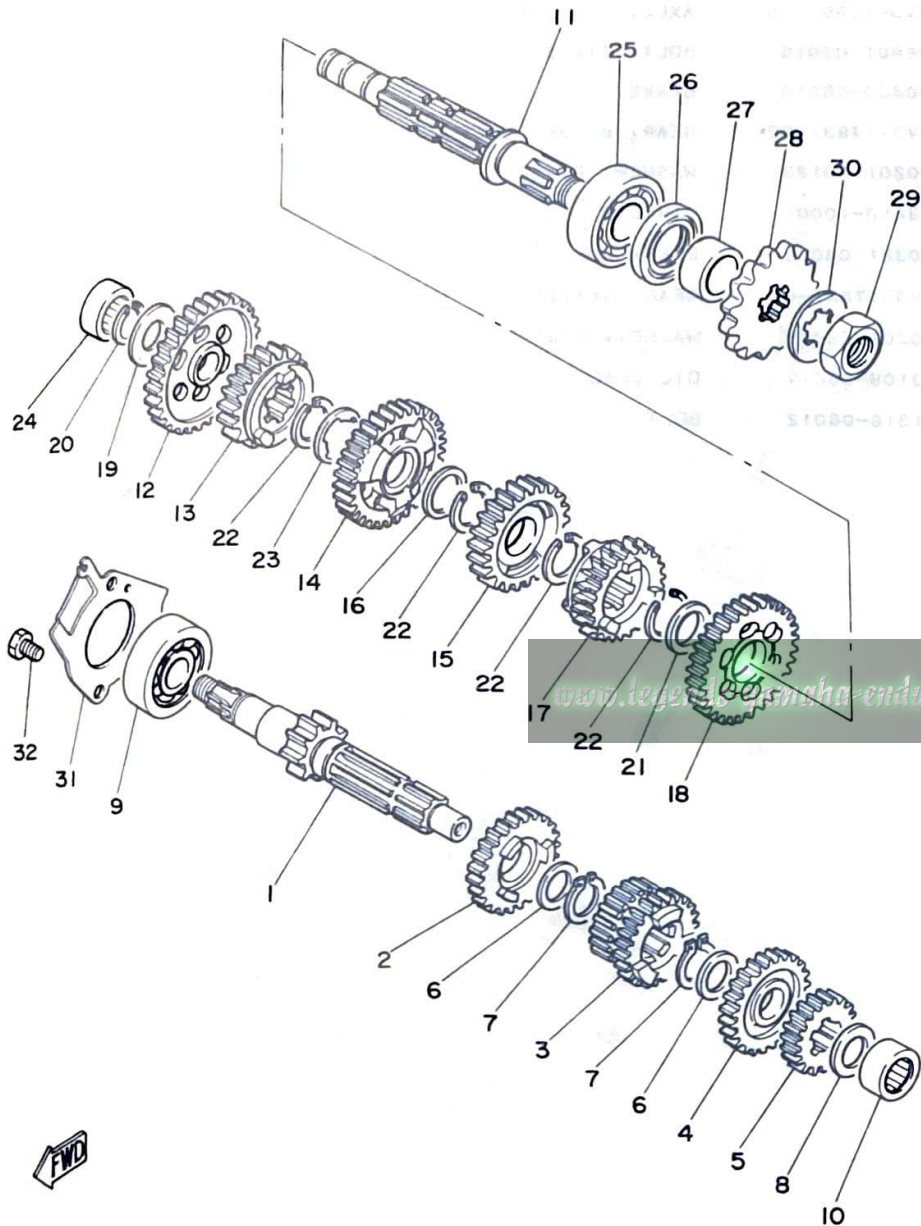


REF. NO.	PART NO.	DESCRIPTION	Q'TY	REMARKS
1	5F6-17411-00	AXLE, main (15T)	1	
2	3V3-17151-00	GEAR, 5th Pinion (23T)	1	
3	3V3-17131-00	GEAR, 3rd/4th Pinion (23/25T)	1	
4	3V3-17161-00	GEAR, 6th Pinion (27T)	1	
5	5F6-17121-00	GEAR, 2nd Pinion (18T)	1	
6	90201-20266	WASHER, Plate	2	
7	93410-20038	CIRCLIP	2	
8	90201-15701	WASHER, Plate (1.0T)	1	UR
	90201-15564	WASHER, Plate (1.5T)	1	UR
9	93306-20431	BEARING (B6204Z)	1	
10	93311-31522	BEARING, cylindrical	1	
11	537-17421-00	AXLE, drive	1	
12	5F6-17211-00	GEAR, 1st wheel (29T)	1	
13	3V3-17251-00	GEAR, 5th wheel (23T)	1	
14	3V3-17231-00	GEAR, 3rd wheel (28T)	1	
15	3V3-17241-00	GEAR, 4th wheel (27T)	1	
16	90201-22629	WASHER, Plate (0.2T)	1	UN
17	5F6-17261-00	GEAR, 6th wheel (25T)	1	
18	5F6-17221-00	GEAR, 2nd wheel (26T)	1	
19	164-17427-00-06	SHIM 1 (0.6T)	1	
20	93440-15012	CIRCLIP	1	
21	90201-22555	WASHER, Plate	1	
22	93410-22039	CIRCLIP	4	
23	90209-18135	WASHER	1	
24	93311-31515	BEARING, cylindrical	1	
25	93306-20418	BEARING (B6204CS)	1	
26	93102-26042	OIL SEAL	1	
27	90387-202A0	COLLAR	1	

FWD

**B15**

FIG. 11 TRANSMISSION

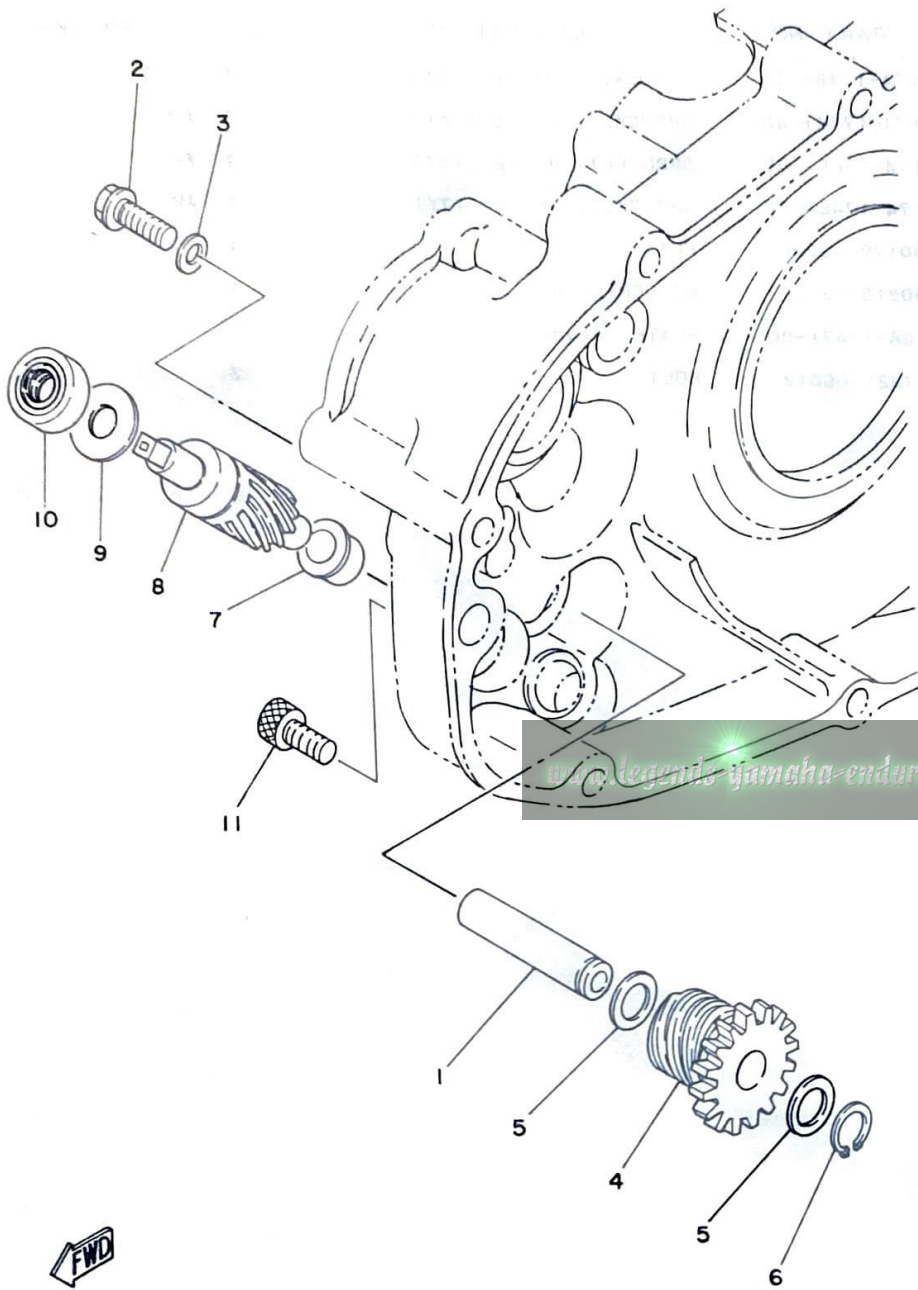


REF. NO.	PART NO.	DESCRIPTION	Q'TY	REMARKS
28	174-17461-60	SPROCKET, drive (16T)	1	STD
	174-17461-40	SPROCKET, drive (14T)	1	AP
	174-17461-50	SPROCKET, drive (15T)	1	AP
	174-17461-70	SPROCKET, drive (17T)	1	AP
29	90179-16226	NUT	1	
30	90215-16127	WASHER, lock	1	
31	1G8-17471-00	PLATE, cover	1	
32	97321-06012	BOLT	2	





FIG. 12 TACHOMETER GEAR

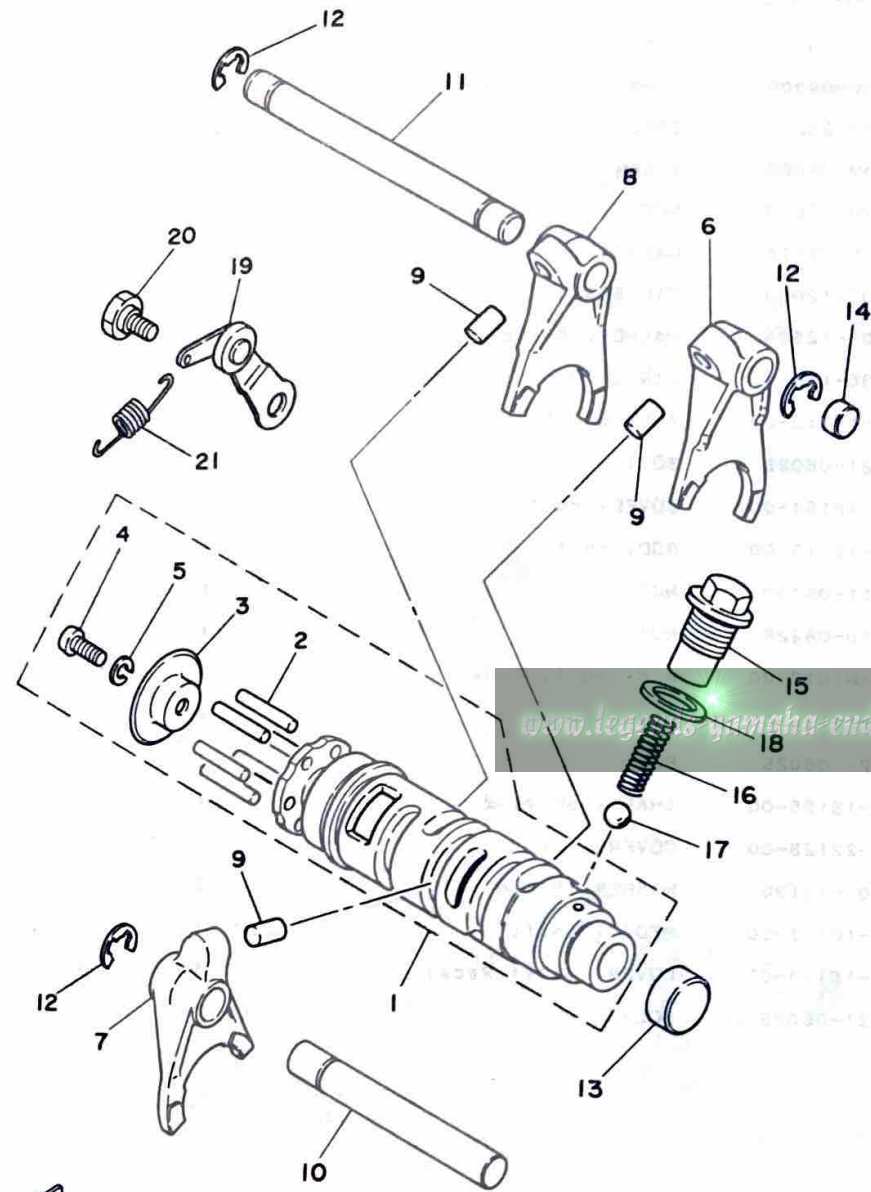


REF. NO.	PART NO.	DESCRIPTION	Q'TY	REMARKS
1	3V3-17861-00	AXLE, drive Gear	1	
2	95801-06016	BOLT, flange	1	
3	90430-06016	GASKET	1	
4	3V3-17831-00	GEAR, drive (16T)	1	
5	90201-10123	WASHER, Plate	2	
6	93410-10001	CIRCLIP	1	
7	90381-08002	BUSH, solid	1	
8	3V3-17841-00	GEAR, driven	1	
9	90201-08779	WASHER, Plate	1	
10	93109-08017	OIL SEAL	1	
11	91316-06012	BOLT	1	



C3

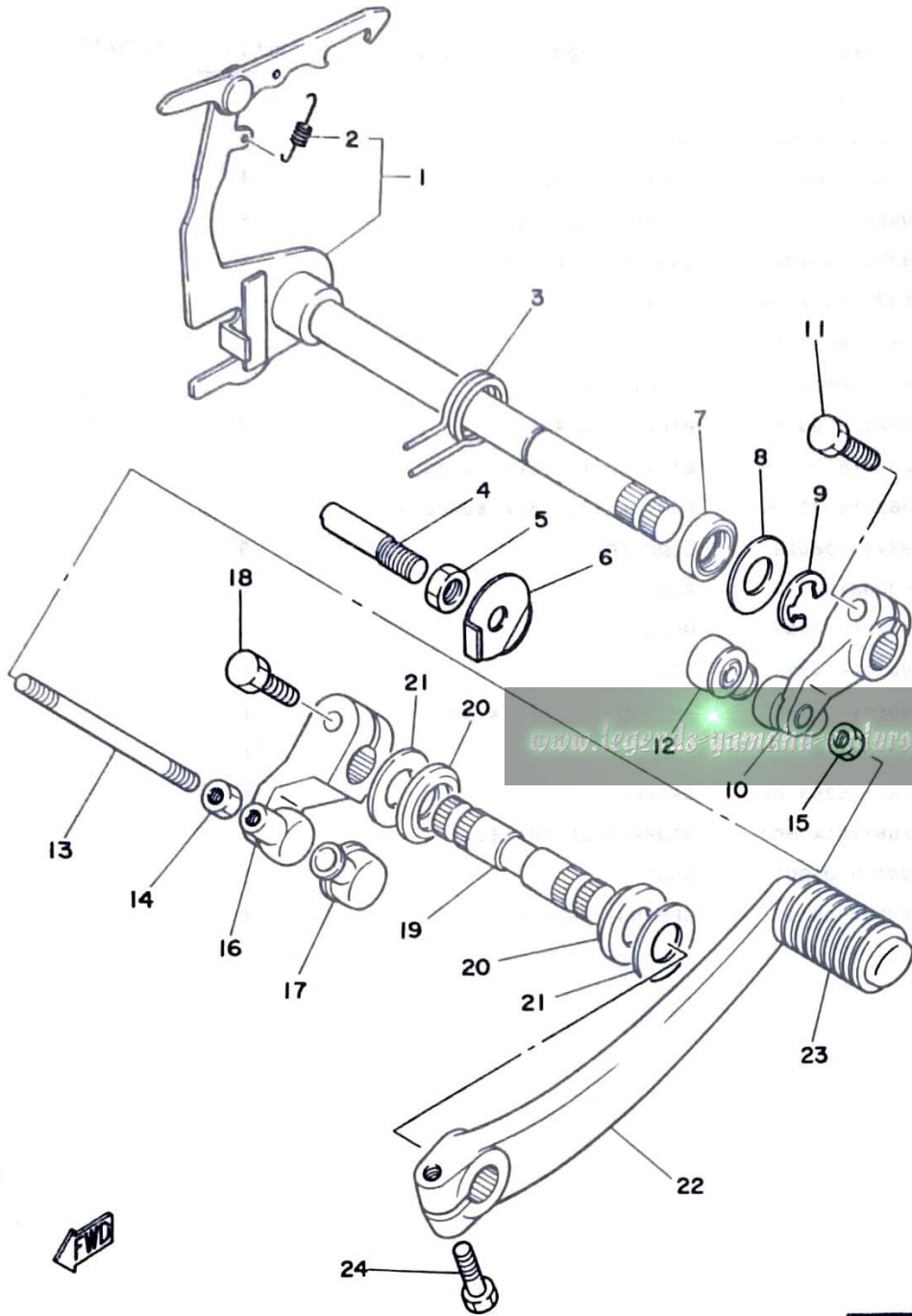
FIG. 13 SHIFT CAM.FORK



REF. NO.	PART NO.	DESCRIPTION	Q'TY	REMARKS
1	1G8-18540-00	SHIFT CAM ASSY	1	
2	93604-22050	•PIN, dowel	6	
3	525-18561-00	•PLATE, side 1	1	
4	98501-05012	•SCREW, Pan head	1	
5	92901-05100	•WASHER, spring	1	
6	537-18511-00	FORK, shift 1	1	
7	525-18512-00	FORK, shift 2	1	
8	525-18513-00	FORK, shift 3	1	
9	90250-06013	PIN, straight	3	
10	257-18531-00	BAR, shift fork guide 1	1	
11	363-18535-00	BAR, shift fork guide 2	1	
12	93430-08006	CIRCLIP	3	
13	90338-20023	PLUG	1	
14	90338-10063	PLUG	1	
15	90109-14385	BOLT	1	
16	90501-12083	SPRING, compression	1	
17	93505-16006	BALL	1	
18	137-15353-00	GASKET, drain	1	
19	1G8-18140-00	STOPPER LEVER ASSY	1	
20	90109-06001	BOLT	1	
21	90506-09112	SPRING, tension	1	



FIG. 14 SHIFT SHAFT-PEDAL



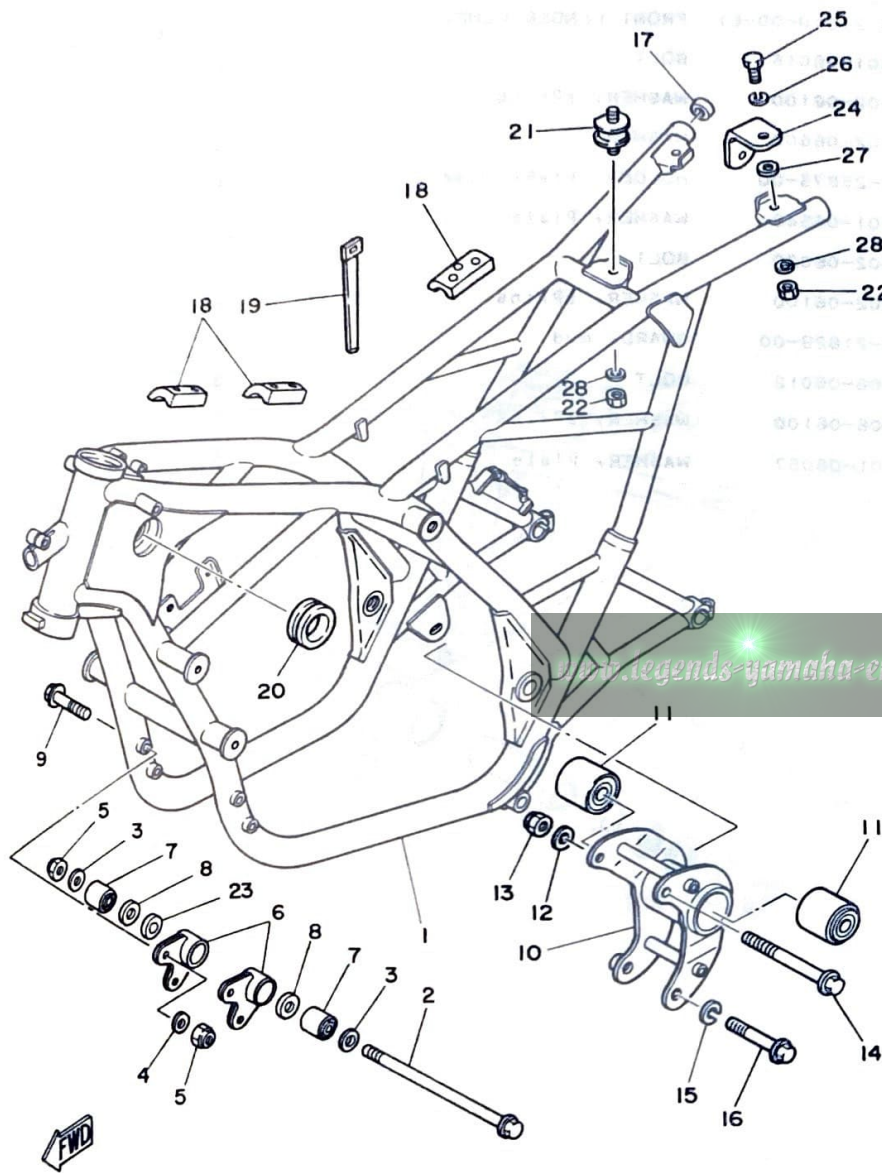
REF. NO.	PART NO.	DESCRIPTION	Q'TY	REMARKS
1	3V3-18101-00	SHIFT SHAFT ASSY	1	
2	90506-09009	.SPRING, tension	1	
3	90508-25273	SPRING, torsion	1	
4	90149-08096	SCREW	1	
5	90170-08029	NUT	1	
6	90215-08014	WASHER, lock	1	
7	93101-12060	OIL SEAL	1	
8	90201-12575	WASHER, Plate	1	
9	93430-10016	CIRCLIP	1	
10	3V3-18112-00	ARM, shift	1	
11	97321-06025	BOLT	1	
12	2H9-18154-00	COVER, dust	1	
13	3V3-18115-00	ROD, shift	1	
14	95301-06700	NUT	1	
15	90170-06228	NUT	1	
16	2H9-W1812-00	ARM, shift Pedal	1	
17	2H9-18154-00	COVER, dust	1	
18	97321-06025	BOLT	1	
19	3V3-18155-00	SHAFT, shift 2	1	
20	1W1-22128-00	COVER, thrust 1	2	
21	90201-12190	WASHER, Plate	2	
22	2K7-18111-00	PEDAL, shift	1	
23	132-18113-01	COVER, shift Pedal	1	
24	97321-06025	BOLT	1	



C5



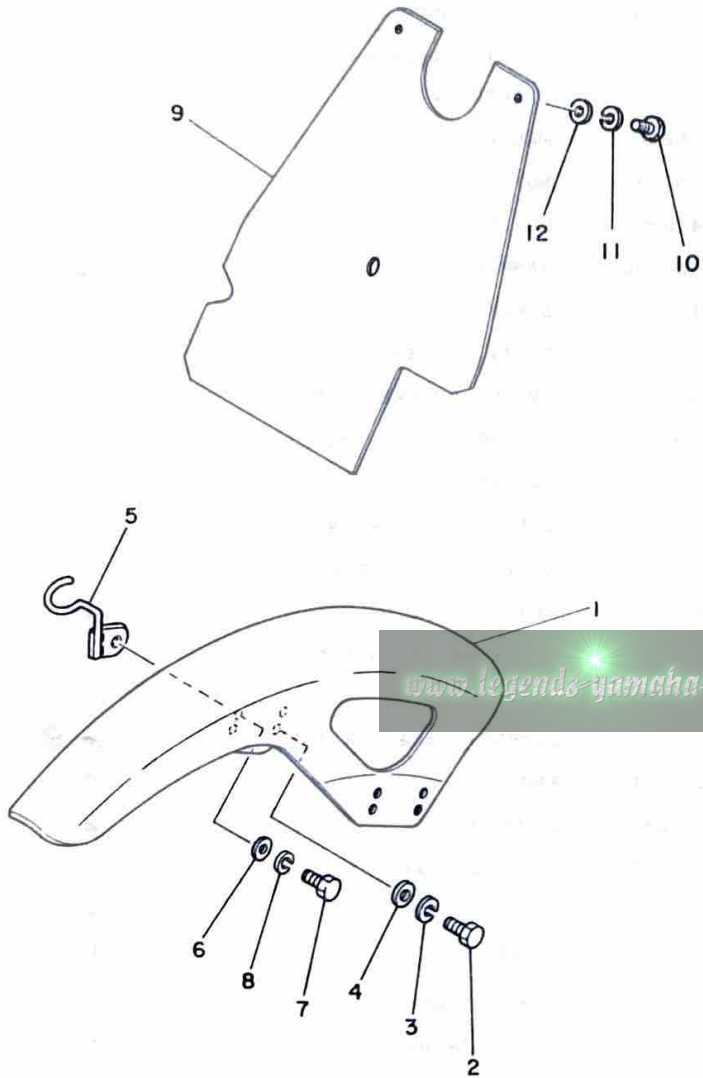
FIG. 15 FRAME



REF. NO.	PART NO.	DESCRIPTION	Q'TY	REMARKS
1	5F6-21110-00-33	FRAME COMP	1	yamaha black
2	90105-08199	BOLT, washer based	1	
3	90201-083A8	WASHER, Plate	2	
4	92901-08200	WASHER, Plain	4	
5	90185-08054	NUT, self-locking	5	
6	5F6-21419-00	BRACKET, engine 2	2	
7	5F6-21486-00	DAMPER 2	2	
8	5F6-21459-00	SPACER	2	
9	95821-08050	BOLT, flange	4	
10	5F6-21410-00	ENGINE BRACKET COMP.	1	
11	5F6-15316-00	DAMPER, engine mount 1	2	
12	92901-08200	WASHER, Plain	1	
13	90185-08054	NUT, self-locking	1	
14	90105-08123	BOLT, washer based	1	
15	92901-10100	WASHER, spring	1	
16	90105-10037	BOLT, washer based	1	
17	90339-13005	PLUG	2	
18	240-24181-00	DAMPER, locating 1	1	6
19	341-26397-01	BAND	2	
20	90480-40047	GROMMET	2	
21	5F6-24723-00	DAMPER, seat	1	
22	95601-06100	NUT, u	3	
23	90387-08772	COLLAR	1	
24	5F6-2471A-00	STAY, seat	2	
25	97301-06020	BOLT, hexagon	2	
26	92901-06100	WASHER, spring	2	
27	90201-08112	WASHER, plate	2	
28	92901-06200	WASHER, plain	3	

FIG. 16 FRONT FENDER-REAR FENDER

REF. NO.	PART NO.	DESCRIPTION	Q'TY	REMARKS
1	5F6-21510-00-E1	FRONT FENDER COMP.	1	chaPPy red
2	97301-06015	BOLT	3	
3	92902-06100	WASHER, sPring	3	
4	92902-06600	WASHER	3	
5	3V3-25875-00	HOLDER, brake hose 1	1	
6	90201-06548	WASHER, Plate	1	
7	97302-06020	BOLT	1	
8	92902-06100	WASHER, sPring	1	
9	3V3-21629-00	GUARD, mud	1	
10	97306-06012	BOLT	3	
11	92906-06100	WASHER, sPring	3	
12	90201-06057	WASHER, Plate	3	



FWD

C7

FIG. 17 REAR ARM

REF. NO.	PART NO.	DESCRIPTION	Q'TY	REMARKS
1	5F6-22110-00-33	REAR ARM COMP.	1	yamaha black
2	90387-16768	COLLAR	2	
3	648-45533-00-02	SHIM (0.2T)	1	UR
	648-45533-00-03	SHIM (0.3T)	1	UR
4	93342-22205	BEARING	2	
5	93317-22214	BEARING, cylindrical	2	
6	93109-22018	OIL SEAL	2	
7	3V3-22151-00	SEAL, Guard	1	
8	3V3-22141-00	SHAFT, Pivot	1	
9	90179-16028	NUT	1	
10	90386-22097	BUSH	2	

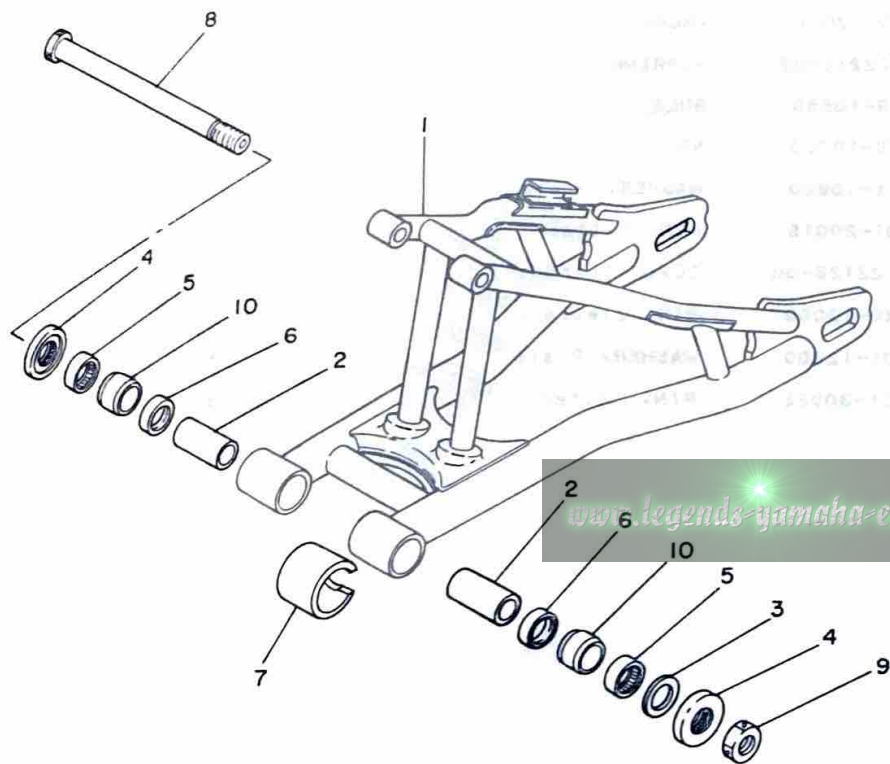
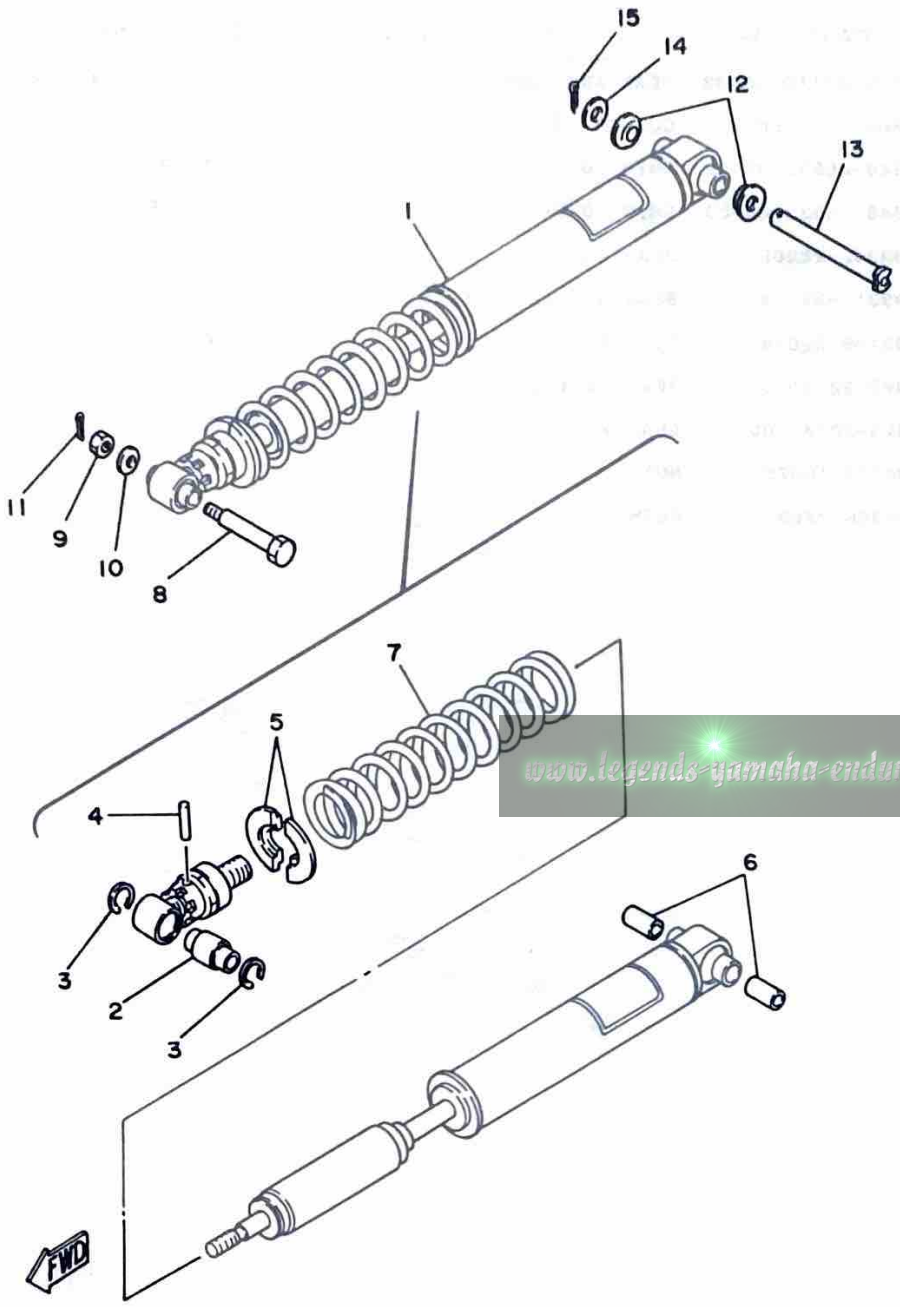




FIG. 18 REAR SUSPENSION

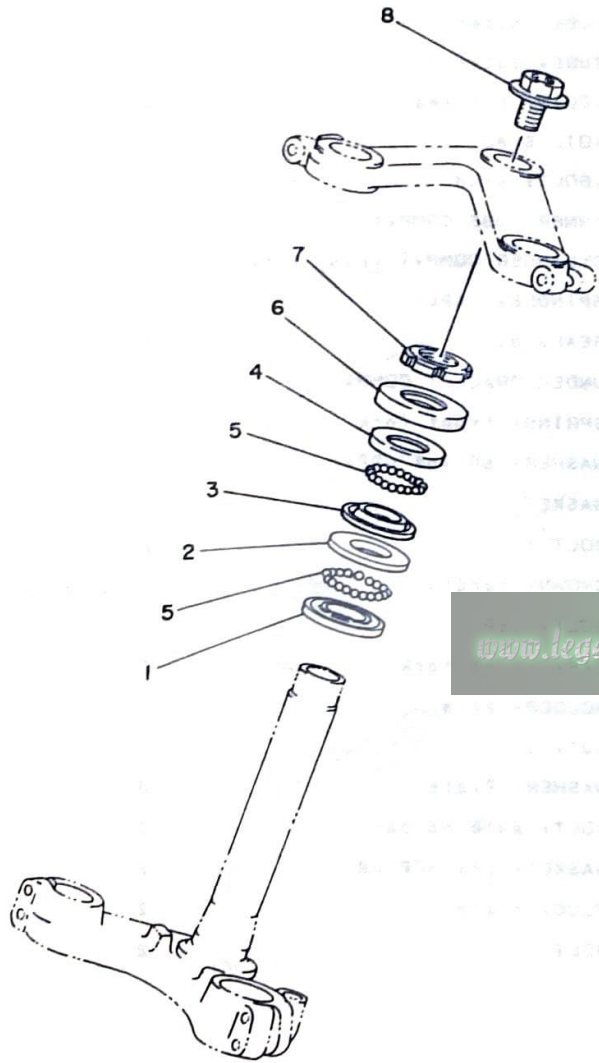
REF. NO.	PART NO.	DESCRIPTION	Q'TY	REMARKS
1	5F6-22210-01	SHOCK ABSORBER ASSY, rear	1	
2	3G2-22216-00	.BUSH, rear shock absorber	1	
3	93450-24062	.CIRCLIP	2	
4	93604-26132	.PIN, dowel	1	
5	3G2-22214-00	.GUIDE, sPring 1	2	
6	90380-12051	.BUSH, solid	2	
7	5F6-22212-00	.SPRING	1	
8	90109-10550	BOLT	1	
9	95302-10700	NUT	1	
10	92901-10600	WASHER, Plate	1	
11	91401-20015	PIN, cotter	1	
12	1W1-22128-00	COVER, thrust 1	2	
13	90240-12060	PIN, clevis	1	
14	92901-12600	WASHER, Plate	1	
15	91401-30022	PIN, cotter	1	



C9

FIG. 19 STEERING

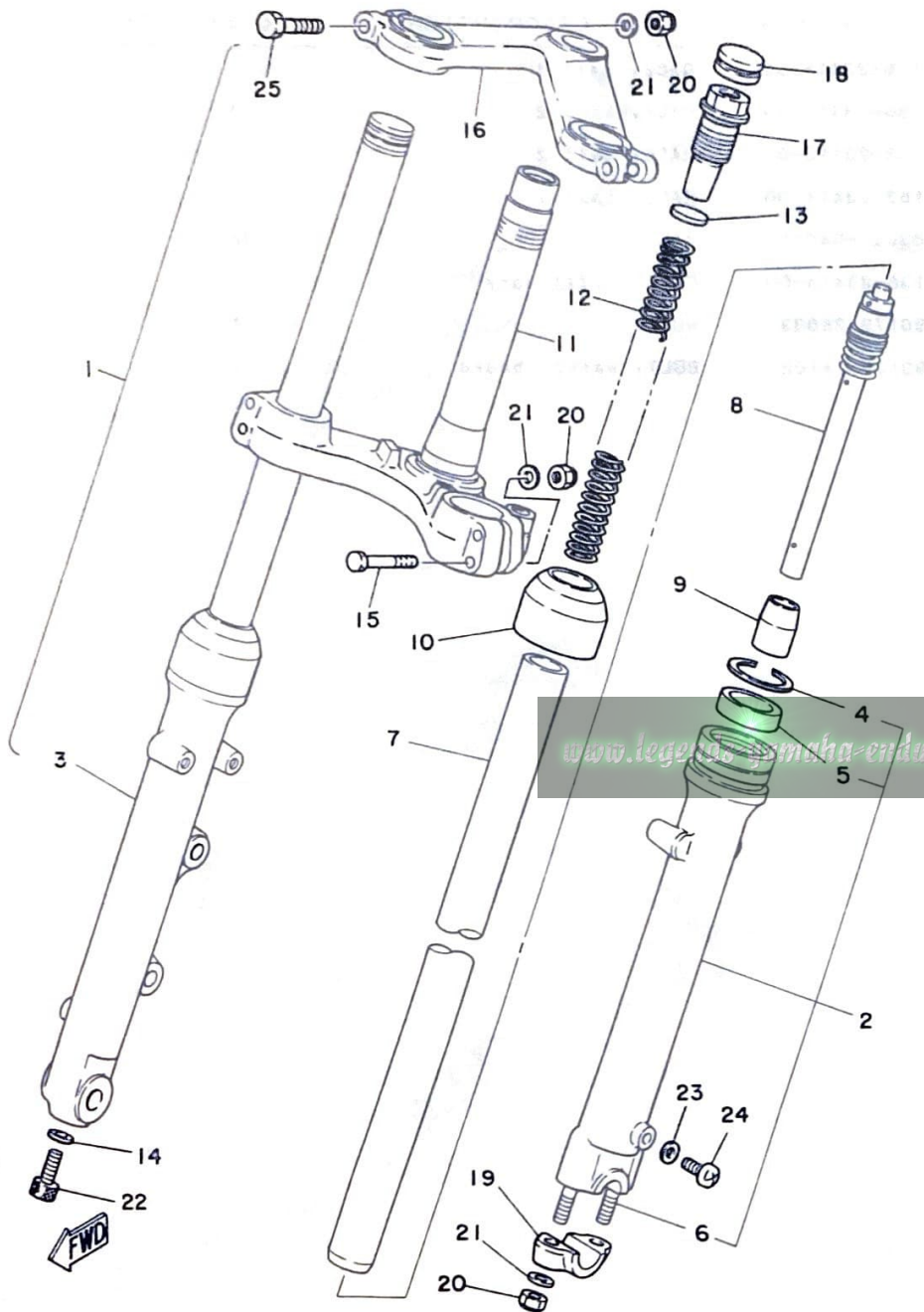
REF. NO.	PART NO.	DESCRIPTION	Q'TY	REMARKS
1	156-23411-00	RACE, ball 1	1	
2	156-23412-00	RACE, ball 2	1	
3	183-23412-00	RACE, ball 2	1	
4	183-23411-00	RACE, ball 1	1	
5	93501-04011	BALL	38	
6	136-23415-00	COVER, ball race 1	1	
7	90178-25033	NUT	1	
8	90105-14102	BOLT, washer based	1	



[www.legends-yamaha-enduros.com](http://www.legends-yamaha-enduros.com)



FIG. 20 FRONT FORK



REF. NO.	PART NO.	DESCRIPTION	Q'TY	REMARKS
1	5F6-23101-00	FRONT FORK ASSY	1	
2	5F6-23126-00	.TUBE, outer 1	1	
3	5F6-23136-00	.TUBE, outer 2	1	
4	3V3-23156-00	..CLIP, oil seal	2	
5	5F6-23145-00	..OIL SEAL	2	
6	90116-08261	..BOLT, stud	2	
7	5F6-23110-00	.INNER TUBE COMP.1	2	
8	5F6-23170-00	.CYLINDER COMP., front fork	2	
9	1X0-23173-00	.SPINDLE, taPer	2	
10	5F6-23144-00	.SEAL, dust	2	
11	5F6-23340-00	.UNDER BRACKET COMP.	1	
12	5F6-23141-00	.SPRING, front fork	2	
13	5F6-23149-00	.WASHER, sPring upper	2	
14	509-23158-L0	.GASKET	2	
15	5F6-23346-00	.BOLT 1	2	
16	3V3-23435-00-38	.CROWN, handle	1	clear buffing
17	3V3-23111-00	.BOLT, caP	2	
18	409-23168-00	.CAP, front fork	2	
19	291-23167-61	.HOLDER, axle	1	
20	95601-08100	.NUT, u	8	
21	90201-08544	.WASHER, Plate	8	
22	278-23128-51	.BOLT, axle holder	2	
23	122-23129-00	.GASKET, drain Plug	2	
24	122-23119-01	.PLUG, drain	2	
25	90101-08263	.BOLT	2	



FIG. 21 FUEL TANK

REF. NO.	PART NO.	DESCRIPTION	Q'TY	REMARKS
1	5F6-24110-00-01	FUEL TANK COMP.	1	clean white/ch-appy red
2	2A2-24161-00	•EMBLEM 1	2	
3	322-24611-02	BODY, caP	1	
4	90430-35122	GASKET	1	
5	90446-07094	HOSE	1	
6	322-24500-02	FUEL COCK ASSY 1	1	
7	90445-11152	HOSE	1	
8	90467-10008	CLIP	1	
9	90467-11010	CLIP	1	
10	240-24173-00	BAND, tank fitting 1	1	

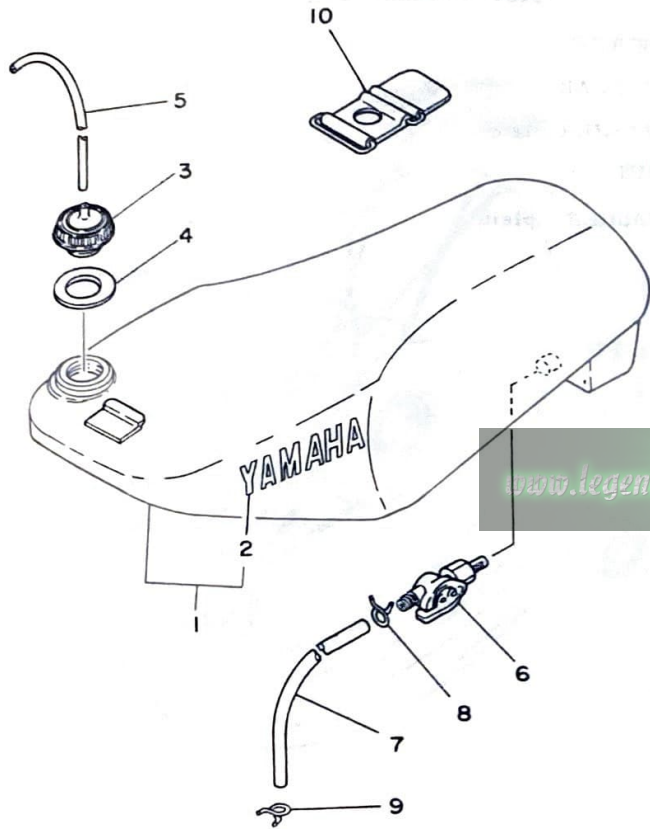
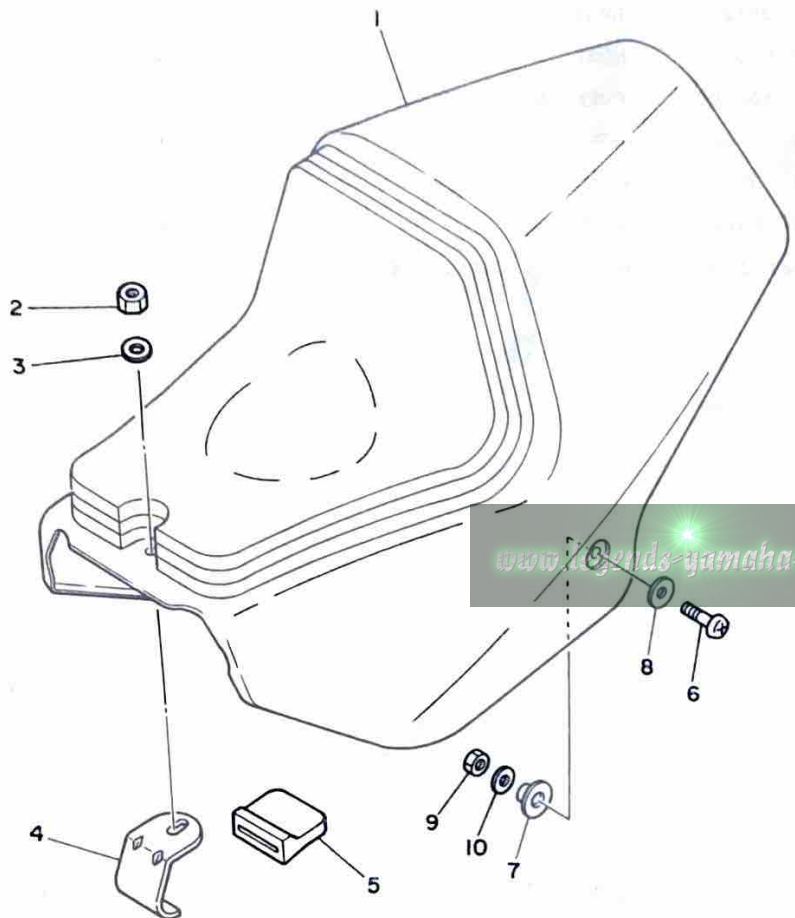


FIG. 22 SEAT

REF. NO.	PART NO.	DESCRIPTION	Q'TY	REMARKS
1	5F6-24710-01-E1	SINGLE SEAT ASSY	1	chaPPy red
2	95606-06100	NUT, u	1	
3	90201-06057	WASHER, Plate	1	
<del>4</del>	<del>5F6-24715-00</del>	<del>STAY, front</del>	<del>1</del>	
<del>5</del>	<del>5F6-24724-00</del>	<del>DAMPER, seat</del>	<del>1</del>	
6	90149-06167	SCREW	2	
7	90387-09617	COLLAR	2	
8	90201-06066	WASHER, plate	2	
9	95601-06100	NUT, u	2	
10	92901-06200	WASHER, plain	2	

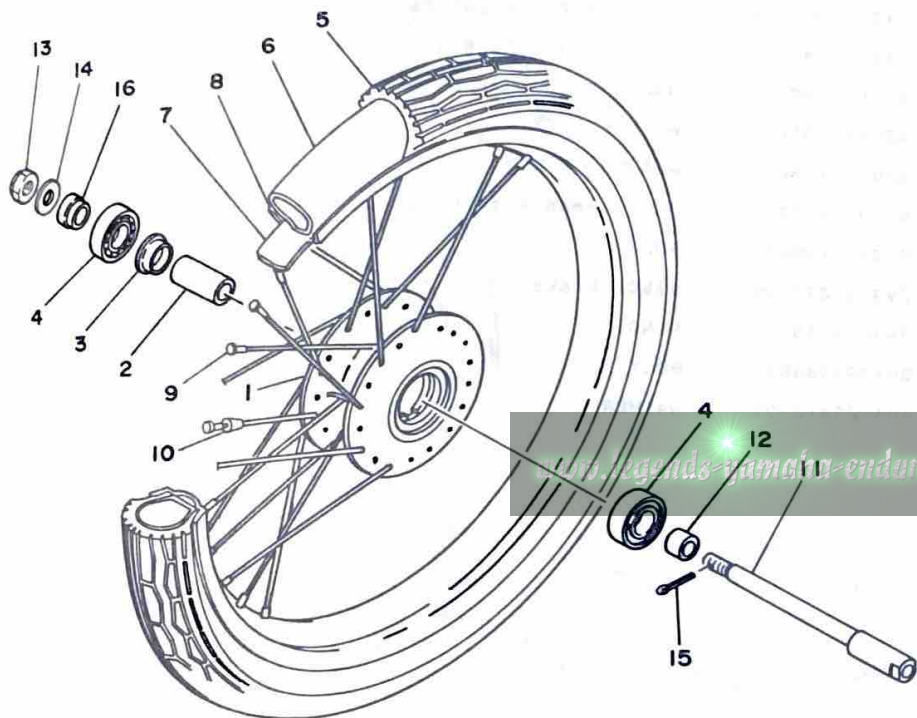


FWD

C13

FIG. 23 FRONT WHEEL

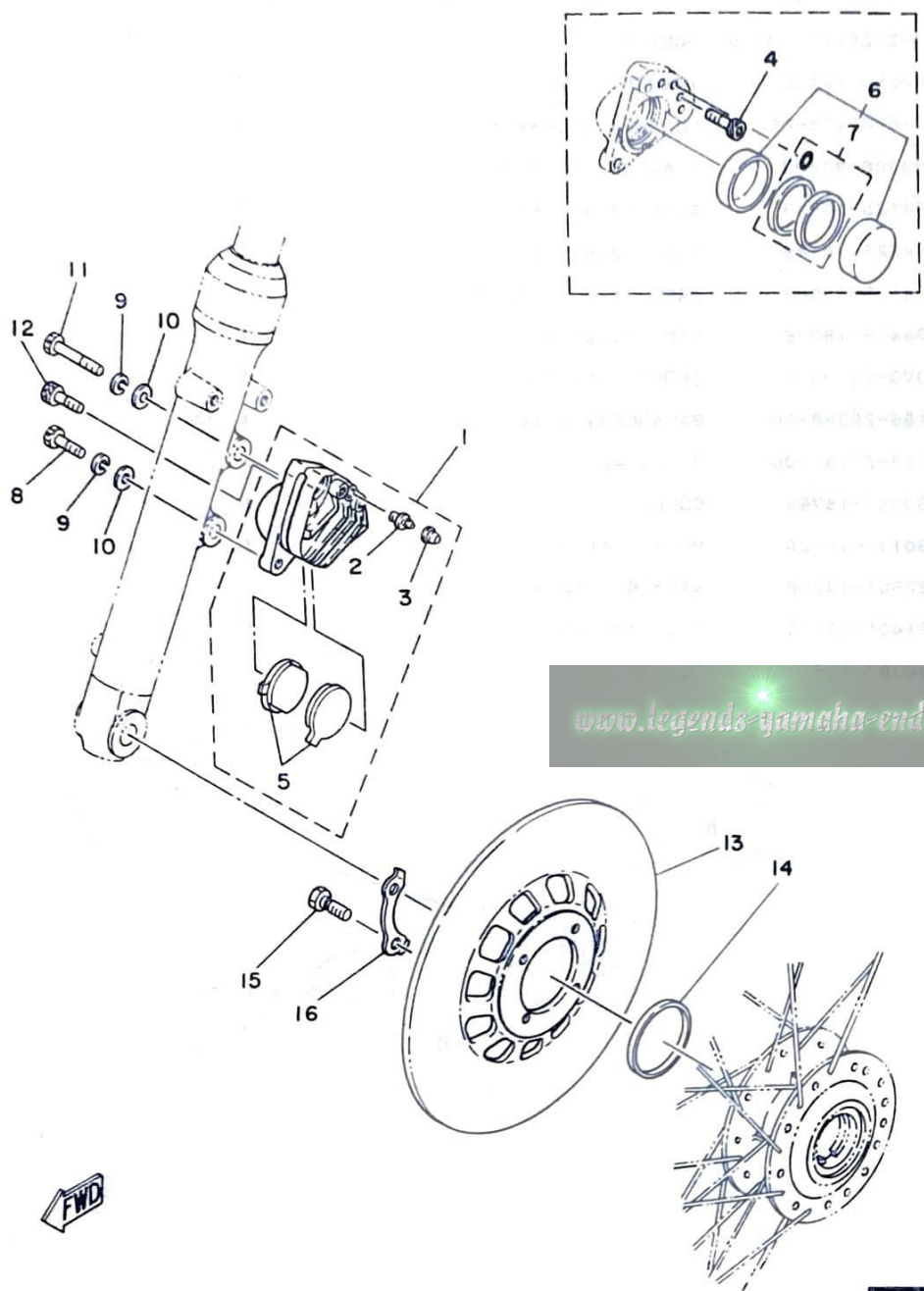
REF. NO.	PART NO.	DESCRIPTION	Q'TY	REMARKS
1	3V3-25111-00-98	HUB, front	1	low gloss black
2	90560-15136	SPACER	1	
3	148-25115-00	FLANGE, sPacer 1	1	
4	93306-30203	BEARING (B6302Z)	2	
5	94125-18548	TIRE (2.50-18)	1	
6	94225-18149	TUBE (2.50-18)	1	
7	94325-18067	BAND, rim (2.50-18)	1	
8	94416-18286	RIM (1.60-18)	1	
9	3V3-25104-00	SPOKE SET, front	1	
10	156-25398-00	BALANCER, wheel	1	UN
11	3V3-25181-00	AXLE, wheel	1	
12	90387-15765	COLLAR	1	
13	90171-14020	NUT, castle	1	
14	92901-14200	WASHER, Plain	1	
15	91401-30030	PIN, cotter	1	
16	90387-15671	COLLAR	1	



C14



FIG. 24 FRONT BRAKE CALIPER

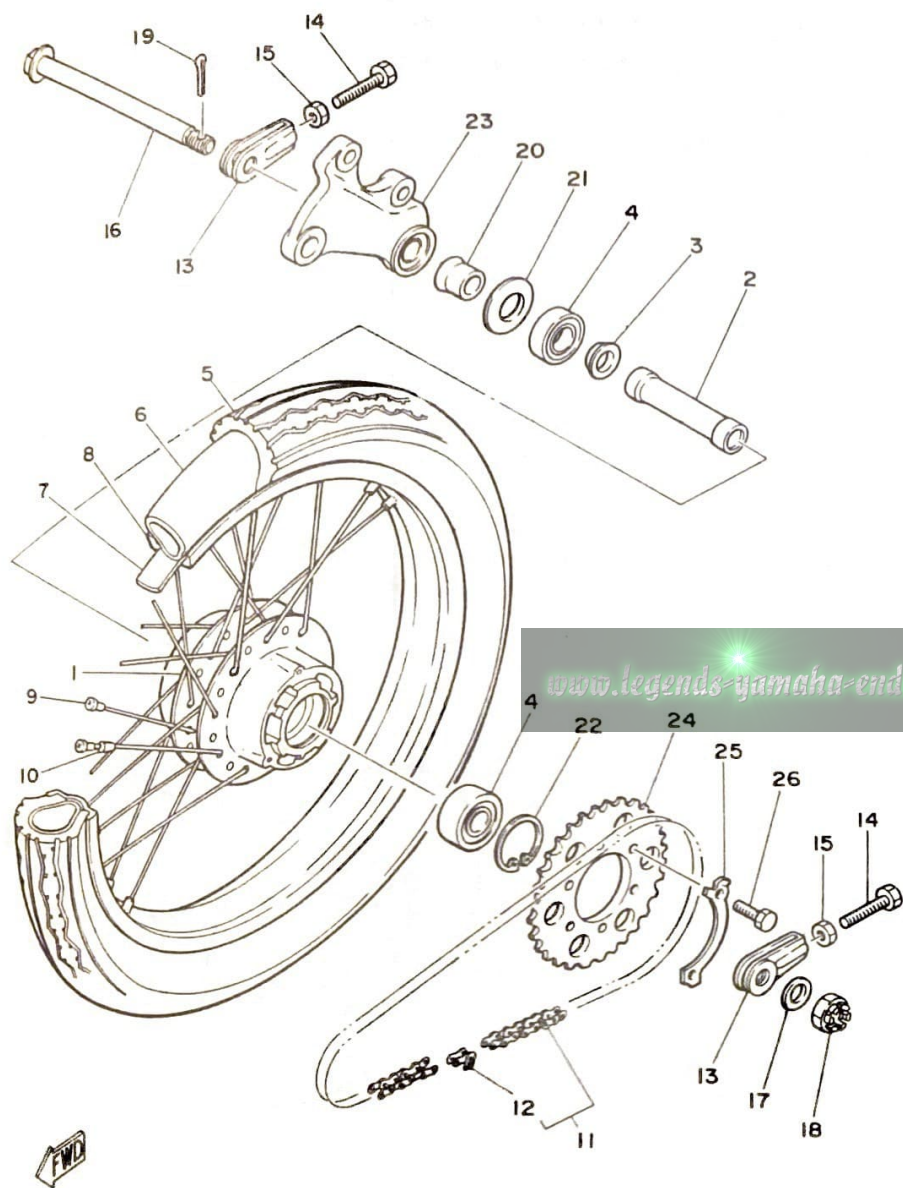


REF. NO.	PART NO.	DESCRIPTION	Q'TY	REMARKS
1	3V3-25810-00	CALIPER ASSY (RIGHT)	1	
2	306-25824-00	.SCREW, breed	1	
3	306-25825-01	.CAP	1	
4	91316-10030	.BOLT	2	
5	3V3-W0045-00	.BRAKE PAD KIT, front	1	
6	1X2-W0057-00	.PISTON ASSY, caliPer	1	
7	1X2-W0047-00	..CALIPER SEAL KIT	1	
8	90103-10019	BOLT, head with hole	1	
9	92901-10100	WASHER, sPring	2	
10	92901-10600	WASHER, Plate	2	
11	90103-10020	BOLT, head with hole	1	
12	91311-10040	BOLT	1	
13	3V3-25831-00	DISC, brake	1	
14	3V3-25185-00	RING 1	1	
15	90109-08367	BOLT	4	
16	404-25412-00	WASHER	2	

FWD

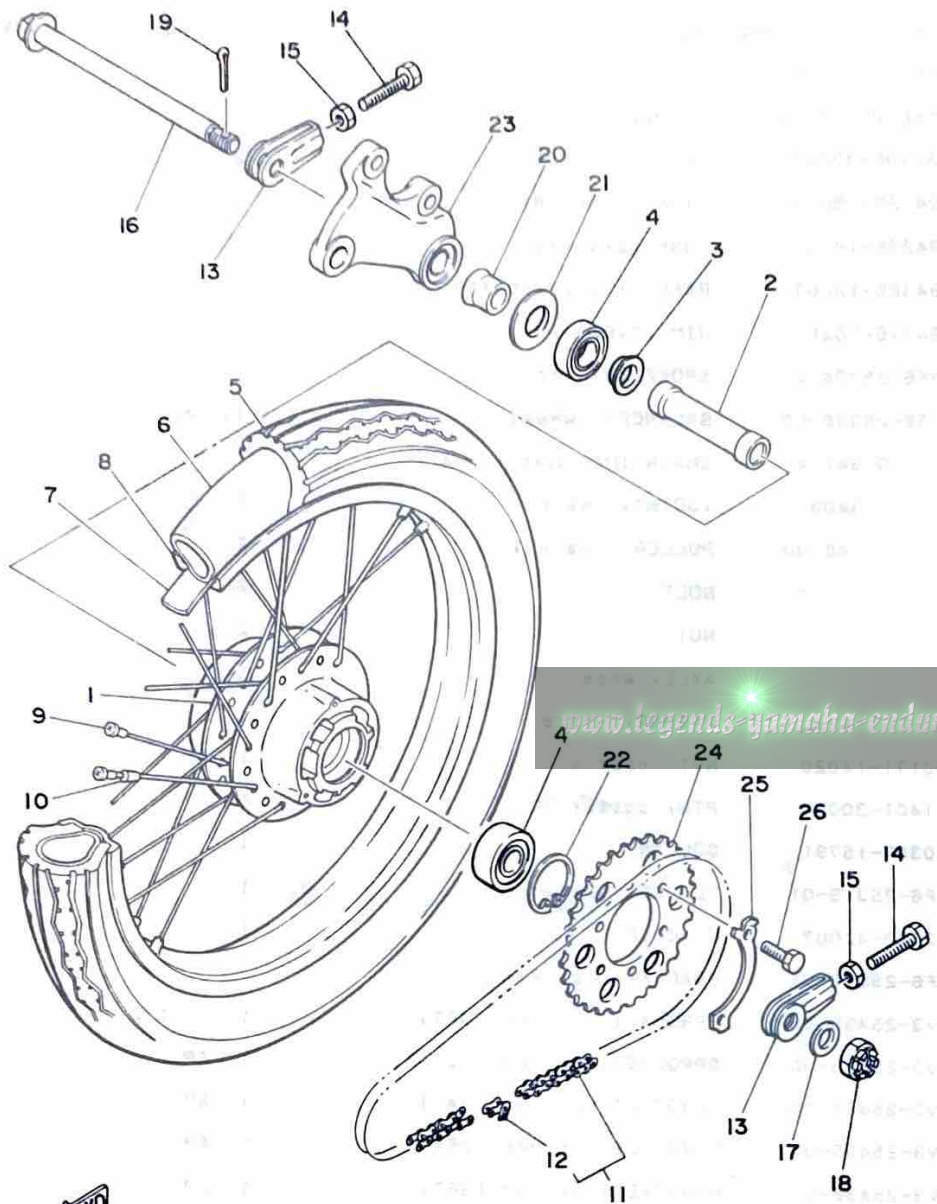
C15

FIG. 25 REAR WHEEL



REF. NO.	PART NO.	DESCRIPTION	Q'TY	REMARKS
1	5F6-25311-00-98	HUB, rear	1	low gloss black
2	90560-15205	SPACER	1	
3	146-25115-00	FLANGE, sPacer 1	1	
4	93306-30203	BEARING (B6302Z)	2	
5	94125-18549	TIRE (2.50-18)	1	
6	94225-18149	TUBE (2.50-18)	1	
7	94325-18067	BAND, rim (2.50-18)	1	
8	94416-18287	RIM (1.60-18)	1	
9	5F6-25304-00	SPOKE SET, rear	1	
10	156-25398-00	BALANCER, wheel	1	UN
11	94580-34114	CHAIN (DID 428HD 114L)	1	
12	94680-34031	.JOINT, chain	1	
13	248-25388-00	PULLER, chain 1	2	
14	90101-08034	BOLT	2	
15	95301-08700	NUT	2	
16	5F6-25381-00	AXLE, wheel	1	
17	90201-14740	WASHER, Plate	1	
18	90171-14020	NUT, castle	1	
19	91401-30030	PIN, cotter	1	
20	90387-15791	COLLAR	1	
21	5F6-25315-01	FLANGE, sPacer	1	
22	93420-42007	CIRCLIP	1	
23	5F6-25819-01	BRACKET, caliPer	1	
24	3V3-25438-00	SPROCKET, driven (38T)	1	STD
	3V3-25433-00	SPROCKET, driven (33T)	1	AP
	3V3-25434-00	SPROCKET, driven (34T)	1	AP
	3V3-25435-00	SPROCKET, driven (35T)	1	AP
	3V3-25436-00	SPROCKET, driven (36T)	1	AP

FIG. 25 REAR WHEEL



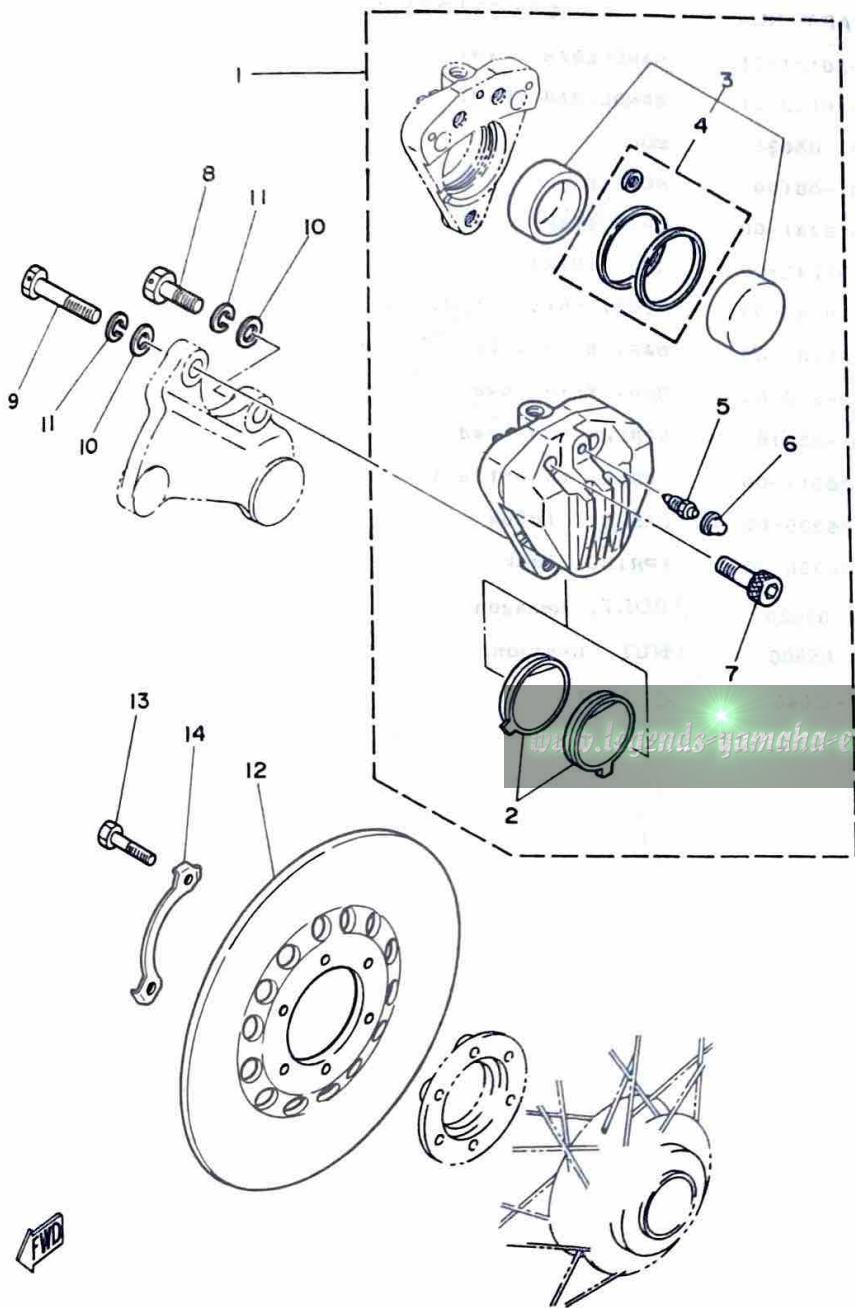
REF. NO.	PART NO.	DESCRIPTION	Q'TY	REMARKS
24	3V3-25437-00	SPROCKET, driven (37T)	1	AP
	3V3-25439-00	SPROCKET, driven (39T)	1	AP
25	3V3-25412-00	WASHER	2	
26	90101-08471	BOLT	3	

FWD

D3



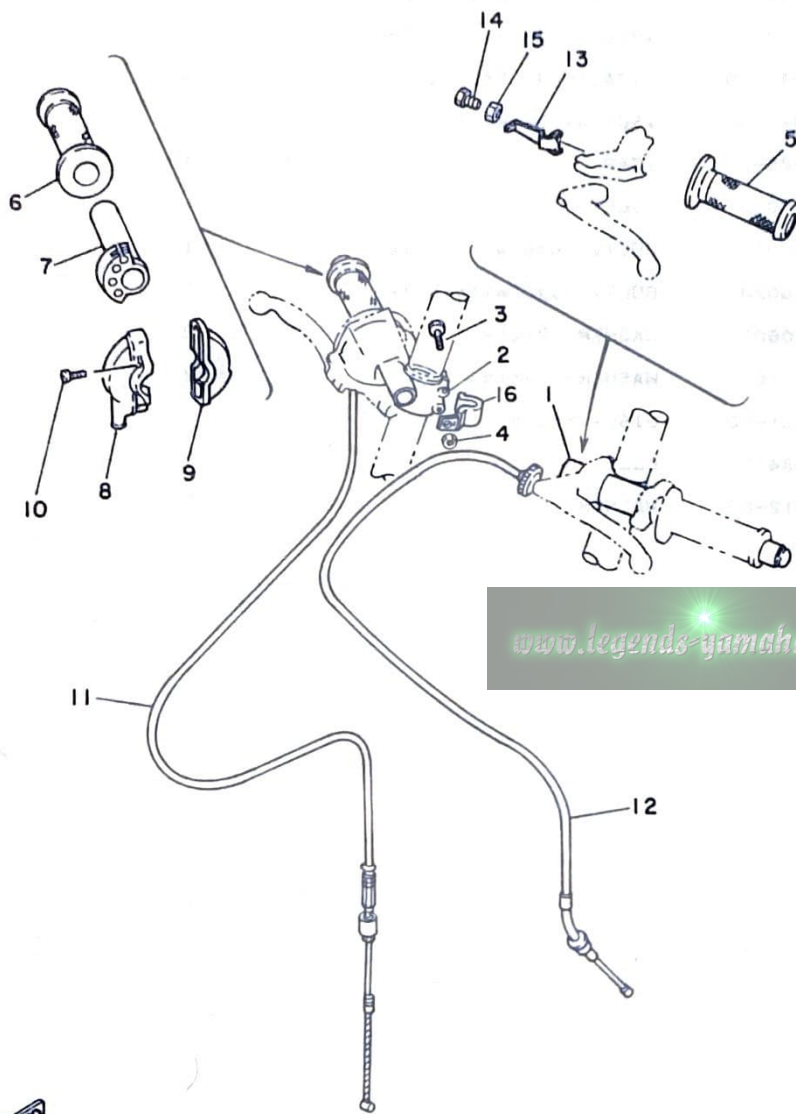
FIG. 26 REAR BRAKE CALIPER



REF. NO.	PART NO.	DESCRIPTION	Q'TY	REMARKS
1	5F6-25810-50	CALIPER ASSY	1	
2	5F6-W0046-50	•BRAKE PAD KIT, rear	1	
3	1X2-W0057-00	•PISTON ASSY, caliPer	1	
4	1X2-W0047-00	••CALIPER SEAL KIT	1	
5	306-25824-00	•SCREW, breed	1	
6	306-25825-01	•CAP	1	
7	91316-10030	•BOLT	1	
8	90103-10019	BOLT, head with hole	1	
9	90103-10020	BOLT, head with hole	1	
10	92901-10600	WASHER, Plate	2	
11	92901-10100	WASHER, sPring	2	
12	3V3-25831-50	DISC, brake	1	
13	90101-08471	BOLT	3	
14	3V3-25412-00	WASHER	2	

FIG. 27 HANDLEBAR-CABLE

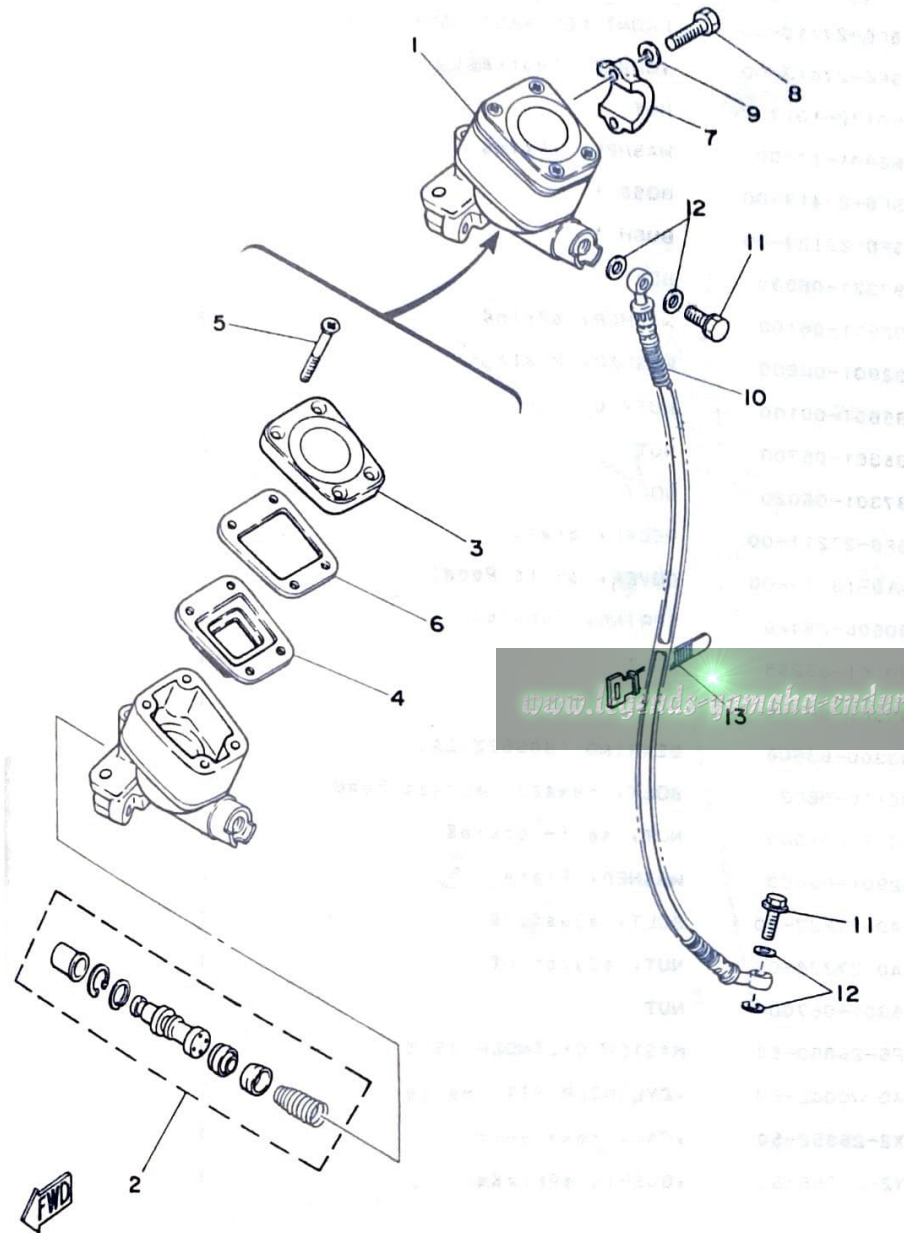
REF. NO.	PART NO.	DESCRIPTION	Q'TY	REMARKS
1	5F6-26121-01	HANDLEBAR (L.H)	1	
2	5F6-26122-01	HANDLEBAR (R.H)	1	
3	97321-08035	BOLT	4	
4	95601-08100	NUT, u	4	
5	240-26241-00	GRIP (L.H)	1	
6	240-26242-00	GRIP (R.H)	1	
7	431-26243-00	TUBE, throttle Guide	1	
8	3V3-26281-00	CAP, Grip upper	1	
9	3V3-26282-00	CAP, Grip lower	1	
10	98501-05016	SCREW, Pan head	2	
11	3V3-26311-00	CABLE, throttle 1	1	
12	3V3-26335-00	CABLE, clutch	1	
13	5F6-26368-00	SPRING, lock	1	
14	97301-05020	BOLT, hexagon	1	
15	95301-05600	NUT, hexagon	1	
16	90462-12048	CLAMP	1	



FWD

D5

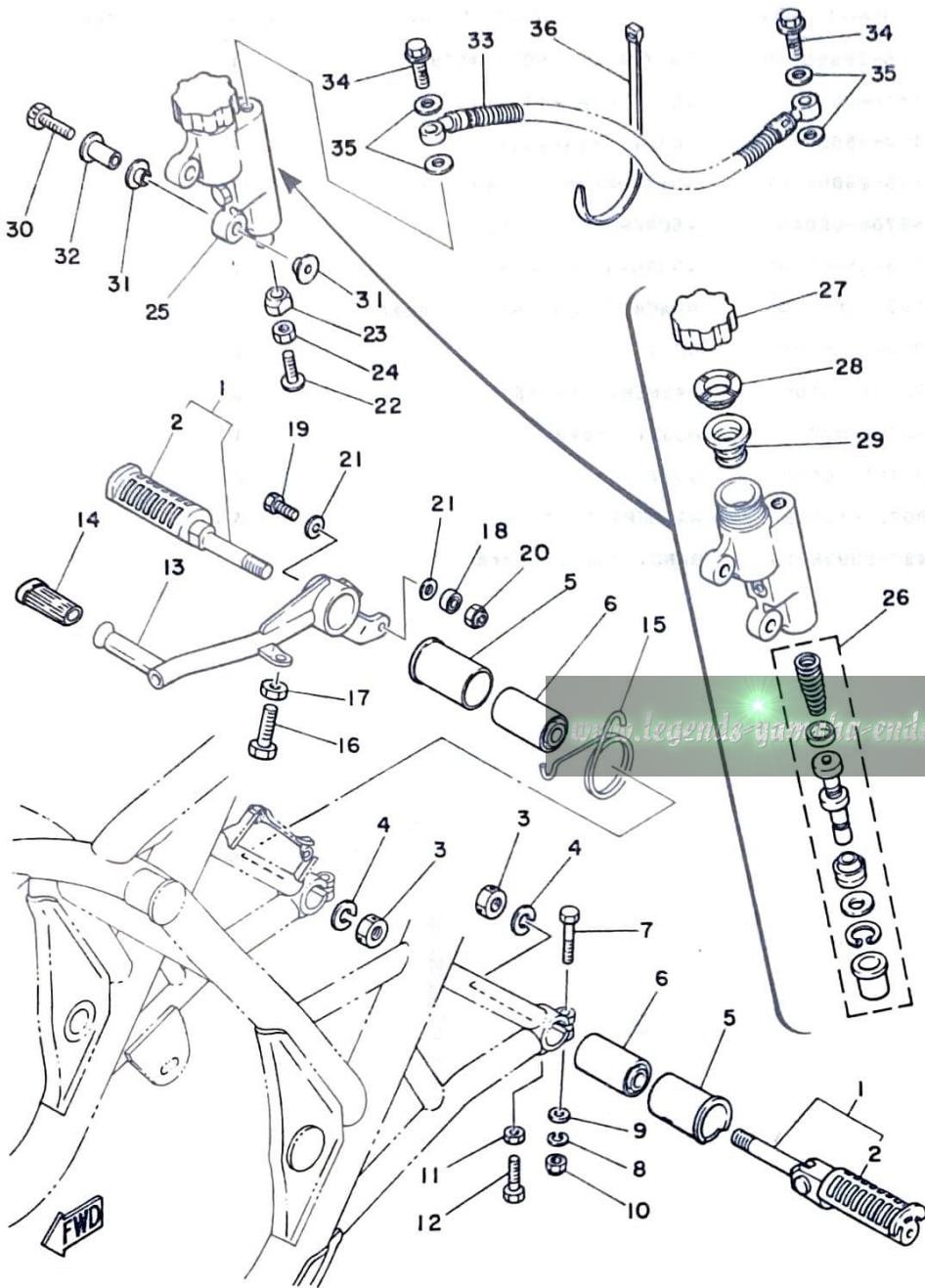
FIG. 28 FRONT MASTER CYLINDER



REF. NO.	PART NO.	DESCRIPTION	Q'TY	REMARKS
1	5F6-25850-00	MASTER CYLINDER ASSY	1	
2	1Y1-W0041-00	•CYLINDER KIT, master	1	
3	1J3-25852-01	•CAP, reservoir	1	
4	1J3-25854-01	•DIAPHRAGM, reservoir	1	
5	98706-05040	•SCREW, flat head	4	
6	1J3-25855-01	•BUSH, diaPhra&m	1	
7	1J3-25867-00	BRACKET, master cylinder	1	
8	97301-06025	BOLT	2	
9	92901-06100	WASHER, sPring	2	
10	1J3-25872-50	HOSE, brake 1	1	
11	90401-10062	BOLT, union	2	
12	90201-10118	WASHER, Plate	4	
13	437-83936-10	BAND, switch cord	1	



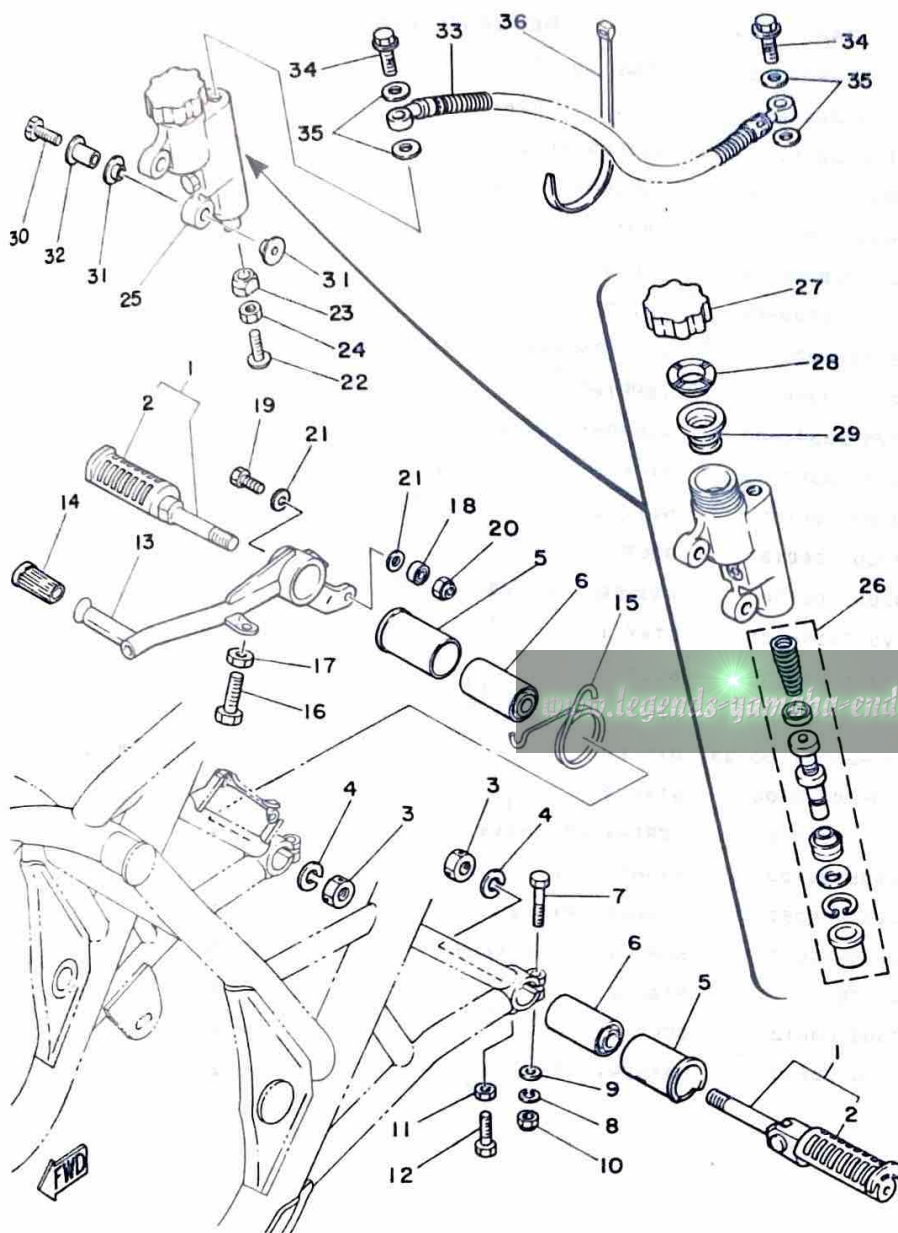
FIG. 29 REAR MASTER CYLINDER



REF. NO.	PART NO.	DESCRIPTION	Q'TY	REMARKS
1	5F6-27410-00	FRONT FOOTREST ASSY (L.H)	2	
2	5F6-27413-00	.COVER, footrest	1	
3	90179-10173	NUT	2	
4	92901-10100	WASHER, sPring	2	
5	5F6-27419-00	BOSS 1	2	
6	5F6-22123-00	BUSH 1	2	
7	97321-06030	BOLT	2	
8	92901-06100	WASHER, sPring	2	
9	92901-06600	WASHER, Plate	2	
10	95601-06100	NUT, u	2	
11	95301-06700	NUT	2	
12	97301-06020	BOLT	2	
13	5F6-27211-00	PEDAL, brake	1	
14	4A0-18113-00	COVER, shift Pedal	1	
15	90508-29445	SPRING, torsion	1	
16	90101-06288	BOLT	1	
17	95301-06700	NUT	1	
18	93300-69606	BEARING (B696ZZ/ZA)	1	
19	90110-06031	BOLT, hexagon socket head	1	
20	90185-06040	NUT, self-locking	1	
21	92901-06600	WASHER, Plate	2	
22	4A0-27227-00	BOLT, adjusting	1	
23	4A0-27238-00	NUT, adjusting	1	
24	95301-06700	NUT	1	
25	5F6-25850-50	MASTER CYLINDER ASSY	1	
26	4A0-W0042-50	.CYLINDER KIT, master	1	
27	1X2-25852-50	.CAP, reservoir	1	
28	1X2-25855-50	.BUSH, diaPhra&m	1	

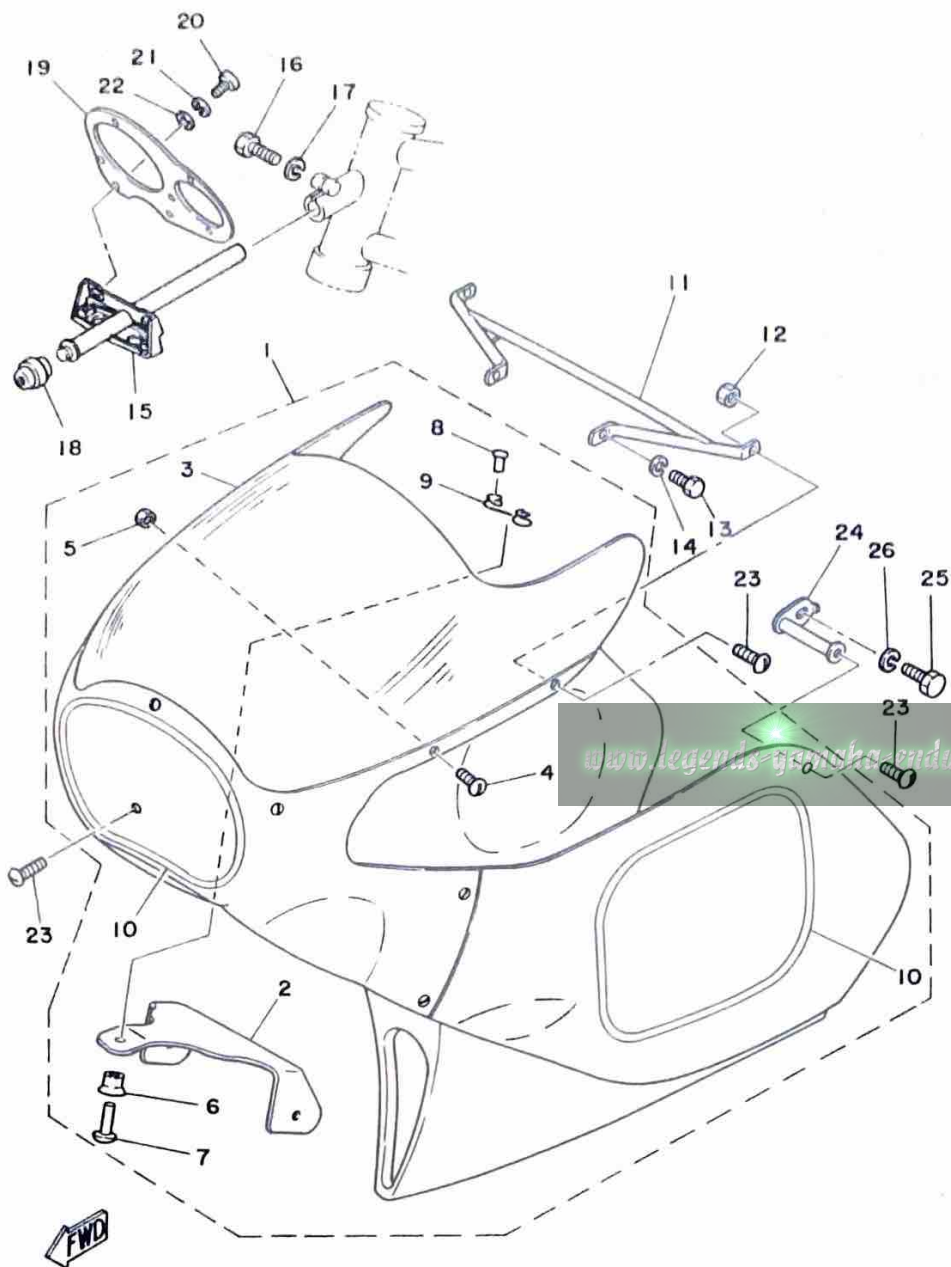
FIG. 29 REAR MASTER CYLINDER

REF. NO.	PART NO.	DESCRIPTION	Q'TY	REMARKS
29	1X2-25854-50	DIAPHRAGM, reservoir	1	
30	90103-06018	BOLT, head with hole	2	
31	90480-10260	GROMMET	4	
32	90387-06774	COLLAR	2	
33	3V3-25872-00	HOSE, brake 1	1	
34	90401-10062	BOLT, union	2	
35	90201-10118	WASHER, Plate	4	
36	90465-13152	CLAMP	1	



D8

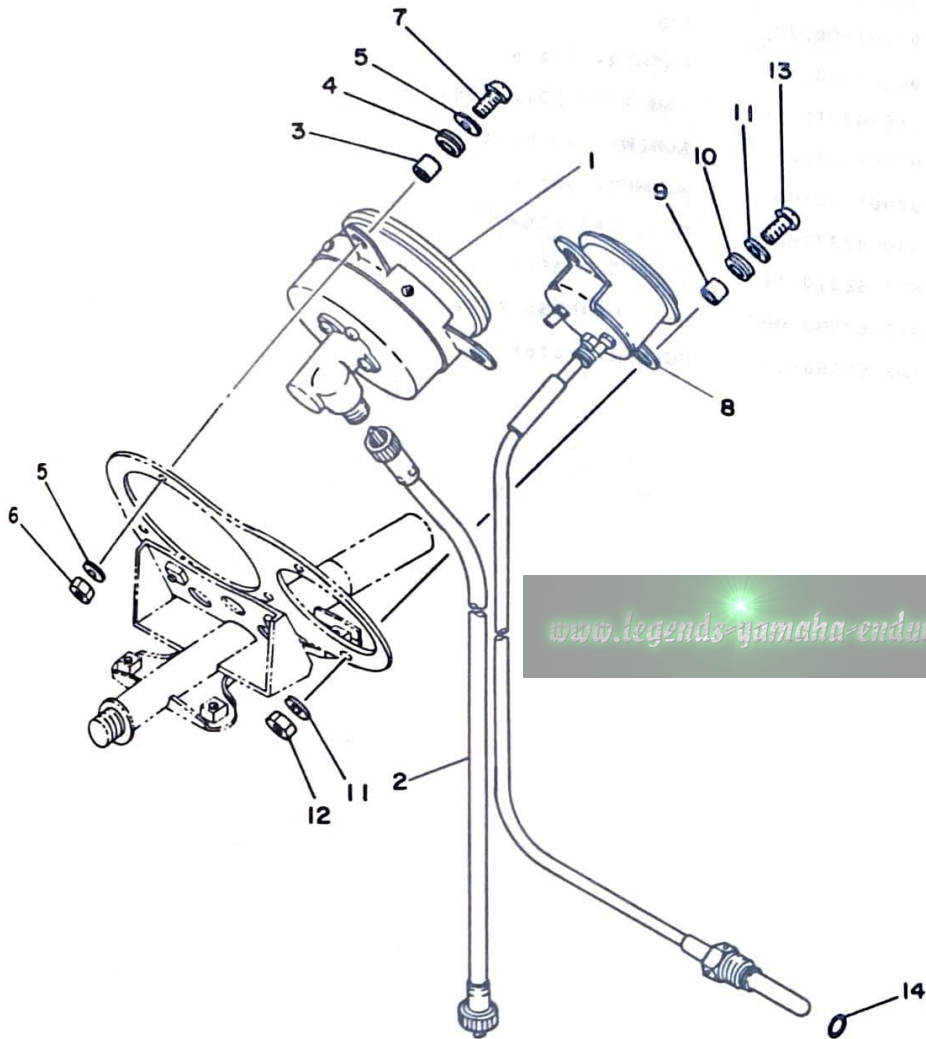
FIG. 30 COWLING



REF. NO.	PART NO.	DESCRIPTION	Q'TY	REMARKS
1	5F6-28350-00-01	COWLING ASSY	1	white/chappy red
2	3V3-28384-00	•COVER, upper	1	
3	5F6-28381-00	•WINDSHIELD	1	
4	90140-04012	•SCREW, round head	5	
5	95301-04700	•NUT	5	
6	240-28386-00	•HEAD	7	
7	240-28389-00	•RIVET	7	
8	90260-02002	•RIVET, round head	14	
9	240-28388-00	•SPRING	7	
10	3V3-28391-00	•GRAPHIC, cowling 1	5	
11	3V3-28357-00	STAY 2	1	
12	95601-06100	NUT, u	2	
13	97301-06012	BOLT	2	
14	92901-06100	WASHER, sPring	2	
15	3V3-28356-01	STAY 1	1	
16	97301-08020	BOLT	1	
17	92901-08100	WASHER, sPring	1	
18	240-28371-00-33	DAMPER	1	yamaha black
19	3V3-28358-00	STAY 3	1	
20	92506-06016	SCREW, Pan head	2	
21	92906-06100	WASHER, sPring	2	
22	90201-06057	WASHER, Plate	2	
23	90140-06010	SCREW, round head	5	
24	3V3-28359-00	STAY 2	2	
25	97306-08012	BOLT	2	
26	92906-08100	WASHER, sPring	2	



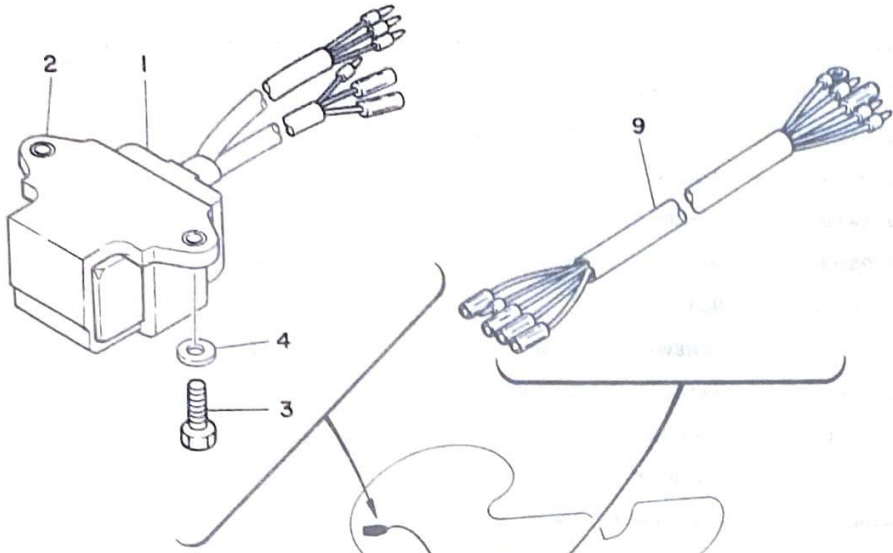
FIG. 31 METER



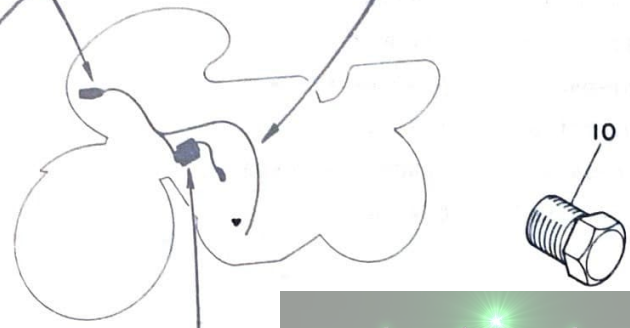
REF. NO.	PART NO.	DESCRIPTION	Q'TY	REMARKS
1	3G2-83540-00	TACHOMETER ASSY	1	
2	2A6-83560-00	TACHOMETER CABLE ASSY	1	
3	90387-05715	COLLAR	3	
4	90480-14103	GROMMET	3	
5	90201-05033	WASHER, Plate	6	
6	95601-05100	NUT, u	3	
7	98506-05030	SCREW, Pan head	3	
8	3V3-83590-00	WATER TEMPERATURE ASSY	1	
9	90387-05715	COLLAR	2	
10	90480-14103	GROMMET	2	
11	90201-05033	WASHER, Plate	4	
12	95601-05100	NUT, u	2	
13	98506-05030	SCREW, Pan head	2	
14	93210-10118	O-RING	1	



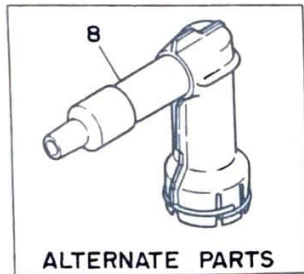
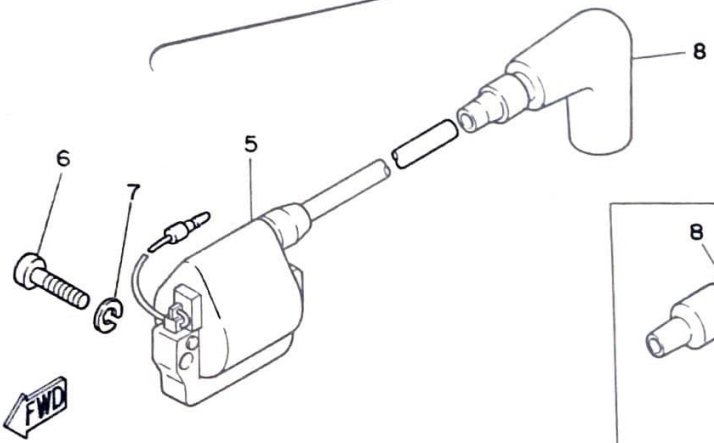
FIG. 32 ELECTRICAL 1



REF. NO.	PART NO.	DESCRIPTION	Q'TY	REMARKS
1	3V3-85540-10	C.D.I. UNIT ASSY	1	
2	363-85546-00	BAND	1	
3	97301-06020	BOLT	2	
4	90201-06052	WASHER, Plate	2	
5	2X6-82310-10	IGNITION COIL ASSY	1	
6	92501-06025	SCREW, Pan head	2	
7	92901-06100	WASHER, Spring	2	
8	3R0-82370-20	PLUG CAP ASSY	1	UR
	8E7-82370-11	PLUG CAP ASSY	1	UR with noise suppressor
9	3V3-82590-00	WIRE HARNESS ASSY	1	
10	1W3-85555-00	PULLER, rotor	1	



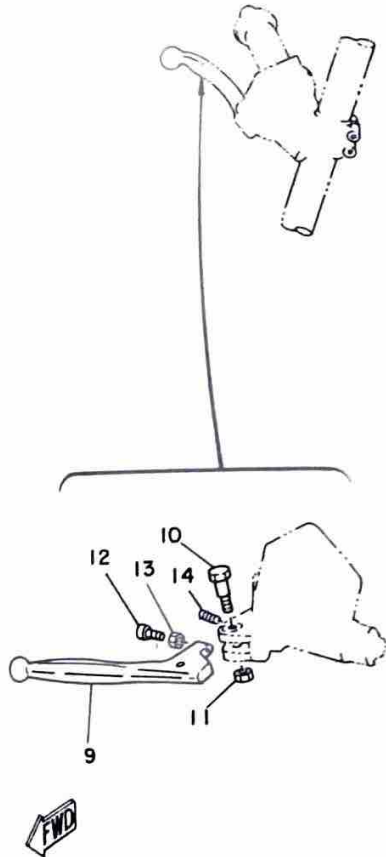
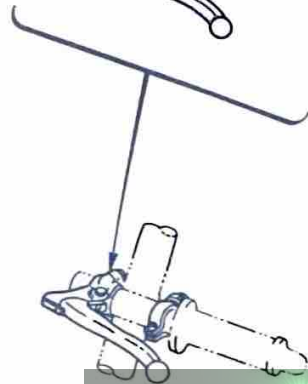
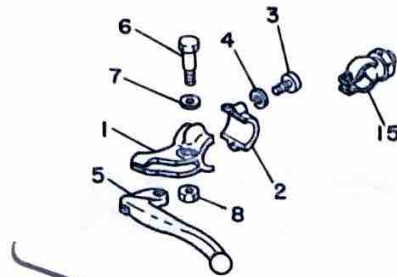
[www.legends-yamaha-enduros.com](http://www.legends-yamaha-enduros.com)



**D11**

FIG. 33 HANDLE SWITCH-LEVER

REF. NO.	PART NO.	DESCRIPTION	Q'TY	REMARKS
1	5F6-82911-00	HOLDER, lever 1	1	
2	4V4-82913-00	HOLDER, lever lower 1	1	
3	97306-05020	BOLT	2	
4	92906-05100	WASHER, sPrinG	2	
5	214-83912-00	LEVER 1	1	
6	90109-06410	BOLT	1	
7	90201-08083	WASHER, Plate	1	
8	95601-06100	NUT, u	1	
9	1A0-83922-00	LEVER 2	1	
10	341-83925-00	SCREW, lever fitting	1	
11	95301-06700	NUT	1	
12	90149-06131	SCREW	1	
13	90170-06010	NUT	1	
14	90501-10312	SPRING, comPression	1	
15	4A0-83976-00	SWITCH, handle 1	1	



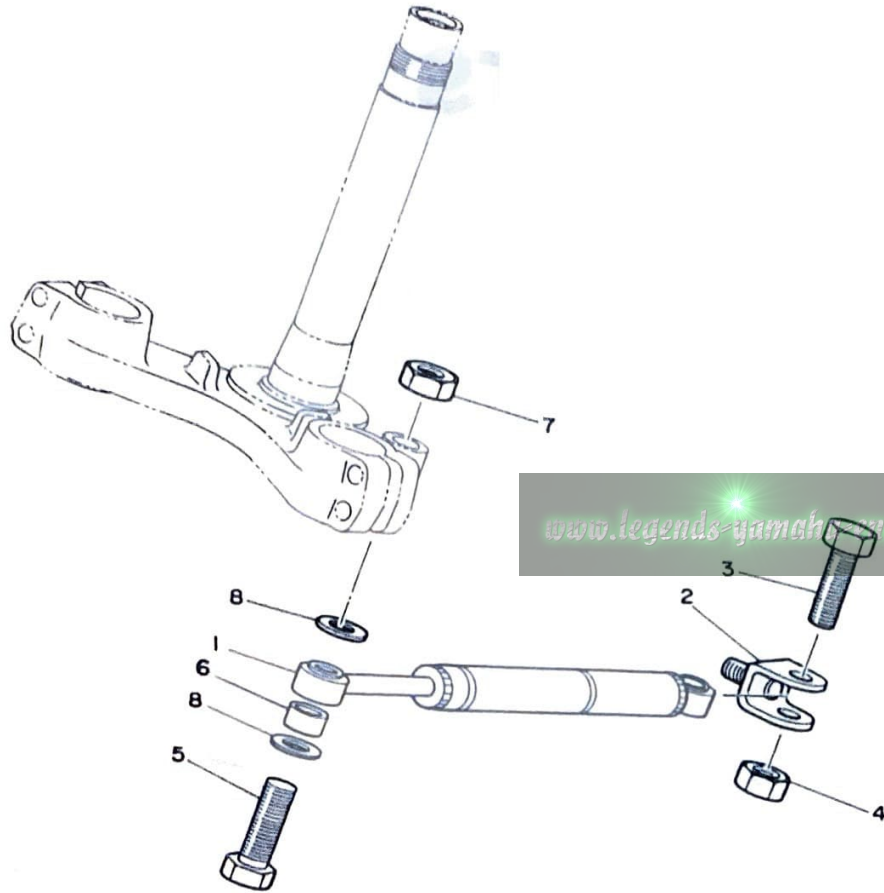


# ALTERNATE PARTS

[www.legends-yamaha-enduros.com](http://www.legends-yamaha-enduros.com)

FIG. 34 ALTERNATE (CHASSIS)

REF. NO.	PART NO.	DESCRIPTION	Q'TY	REMARKS
1	240-23490-00	HANDLEBAR SHIMMY DAMPER ASSY	1	
2	157-23491-00	JOINT	1	
3	97301-08030	BOLT	1	
4	95301-08700	NUT	1	
5	91316-08060	BOLT	1	
6	90387-08557	COLLAR	1	
7	95601-08100	NUT, u	1	
8	92901-08200	WASHER, Plain	2	



**D13**

# INDEX

[www.legends-yamaha-enduros.com](http://www.legends-yamaha-enduros.com)







NUMERICAL INDEX

PART NO.	REF. NO.	PART NO.	REF. NO.	PART NO.	REF. NO.	PART NO.	REF. NO.	PART NO.	REF. NO.	PART NO.	REF. NO.
240-28389-00	30-7	90109-08367	24-15	90201-14217	10-30	90430-12038	10-33	91401-30022	18-15	92906-06100	16-11
3V3-28391-00	30-10	90109-10550	18-8	90201-14740	25-17	90430-35122	21-4	91401-30030	23-15		30-21
648-45533-00-02	17-3	90109-14385	13-15	90201-15564	11-8	90445-07340	8-12		25-19	92906-08100	30-26
648-45533-00-03	17-3	90110-06031	29-19	90201-15701	11-8	90445-10139	1-14	91810-02014	8-3	93101-12060	14-7
109-81328-11	3-10	90116-08065	1-13	90201-20266	11-6	90445-11152	21-7		9-7	93101-45091	10-14
2X6-82310-10	32-5	90116-08261	20-6	90201-22555	11-21	90446-07094	21-5	91810-19020	8-4	93102-25045	10-6
3R0-82370-20	32-8	90140-04012	30-4	90201-22629	11-16	90460-30043	5-9	92501-06020	3-16	93102-25144	2-10
8E7-82370-11	32-8	90140-06010	30-23	90204-12007	10-3		5-15	92501-06025	32-6	93102-26042	11-26
3V3-82590-00	32-9	90149-05147	10-13	90209-18135	11-23		5-17	92501-08010	8-17	93103-10075	4-6
5F6-82911-00	33-1	90149-06131	33-12	90209-22071	2-6	90460-49058	6-3	92506-06016	30-20	93103-28100	2-11
4V4-82913-00	33-2	90149-06167	22-6	90210-08001	5-12	90462-12048	27-16	92901-04100	3-12	93104-05085	10-20
3G2-83540-00	31-1	90149-08096	14-4	90215-08014	14-6	90465-13152	29-36	92901-04600	3-13	93104-14004	10-31
2A6-83560-00	31-2	90149-12140	10-32	90215-12007	10-18	90467-10008	21-8	92901-05100	3-8	93109-08017	12-10
3V3-83590-00	31-8	90170-06010	33-13	90215-16127	11-30	90467-11010	21-9		13-5	93109-22018	17-6
214-83912-00	33-5	90170-06228	14-15	90240-12060	18-13	90480-10260	29-31			93210-10118	31-14
1A0-83922-00	33-9	90170-08029	14-5	90250-06013	1-5	90480-14103	31-4	92901-05600	3-9	93210-11073	8-7
341-83925-00	33-10	90171-14020	23-13		13-9		31-10	92901-06100	3-17	93210-14104	9-6
437-83936-10	28-13		25-18	90260-02002	30-8	90480-20131	5-4		4-16	93210-15151	10-17
4A0-83976-00	33-15	90179-08291	1-6	90280-03017	2-15	90480-22269	7-4		10-26	93210-18023	2-12
3V3-85500-10	3-1	90179-10173	29-3	90282-03003	4-11	90480-40047	15-20		15-26	93210-20027	5-11
3V3-85510-10	3-3	90179-12244	10-2	90282-05005	2-14	90501-10312	33-14		28-9	93210-43404	7-2
565-85515-10	3-6	90179-12296	10-19	90338-06041	1-8	90501-12083	13-16		29-8	93210-62323	1-3
3V3-85540-10	32-1	90179-16028	17-9	90338-10063	13-14	90501-20125	10-12		30-14	93211-17405	1-4
363-85546-00	32-2	90179-16226	11-29	90338-20023	13-13	90506-09009	14-2		32-7	93300-69606	29-18
1G8-85550-10	3-2	90179-25033	19-7	90339-13005	15-17	90506-09112	13-21	92901-06200	10-25	93306-20004	4-7
322-85553-10	3-14	90185-06040	29-20	90340-10016	1-15	90507-20030	7-3		15-28	93306-20418	11-25
322-85554-10	3-15	90185-08054	15-5	90340-12021	8-13	90508-20345	10-29		22-10	93306-20431	11-9
1W3-85555-00	32-10		15-13	90380-12051	18-6	90508-25273	14-3	92901-06600	3-18	93306-20529	2-8
565-85566-10	3-4	90201-05033	31-5	90381-08002	12-7	90508-29445	29-15		29-21	93306-30203	23-4
565-85567-10	3-5		31-11	90386-22097	17-10	90560-15136	23-2	92901-08100	30-17		25-4
90101-06288	29-16	90201-06052	32-4	90387-05715	31-3	90560-15205	25-2	92901-08200	15-4	93306-30421	2-9
90101-08034	25-14	90201-06057	16-12		31-9	91311-10040	24-12		15-12	93310-216A3	2-20
90101-08263	20-25		22-3	90387-06518	5-6	91316-06012	4-15		34-8	93310-422H0	2-7
90101-08471	25-26		30-22	90387-06774	29-32		12-11	92901-08600	7-7	93311-31515	11-24
	26-13	90201-06066	22-8	90387-081A3	7-5	91316-06025	4-20	92901-10100	15-15	93311-31522	11-10
90103-06016	5-5	90201-06074	5-7	90387-08557	34-6		9-9		24-9	93317-21715	4-9
90103-06018	29-30	90201-06548	16-6	90387-08772	15-23	91316-06030	9-2		26-11	93317-22214	17-5
90103-10019	24-8	90201-08083	33-7	90387-09617	22-7	91316-06035	9-13		29-4	93342-22205	17-4
	26-8	90201-08112	15-27	90387-15671	23-16	91316-06040	9-8	92901-10600	18-10	93410-10001	12-6
90103-10020	24-11	90201-08114	7-8	90387-15765	23-12	91316-06050	8-9		24-10	93410-12003	4-4
	26-9	90201-083A8	15-3	90387-15791	25-20		9-11		26-10	93410-20038	11-7
90105-08123	15-14	90201-08544	20-21	90387-18768	17-2	91316-06060	8-10	92901-12600	18-14	93410-22039	11-22
90105-08135	5-13	90201-08779	12-9	90387-202A0	11-27	91316-06070	8-8	92901-14200	23-14	93420-32039	4-8
90105-08199	15-2	90201-09780	4-12	90387-20488	2-13	91316-06080	9-10	92902-04100	6-17	93420-42007	25-22
90105-10037	15-16	90201-10118	28-12	90401-10062	28-11	91316-08015	6-2		6-39	93430-07012	4-13
90105-14102	19-8		29-35		29-34	91316-08060	34-5	92902-05100	6-36	93430-08006	13-12
90109-06001	13-20	90201-10123	12-5	90430-06016	12-3	91316-10030	24-4	92902-06100	16-3	93430-10016	14-9
90109-06410	33-6	90201-12166	4-3	90430-06070	1-9		26-7		16-8	93440-15012	11-20
		90201-12172	1-7	90430-12038	8-14	91401-20015	18-11	92902-06600	16-4		
		90201-12190	14-21					92906-05100	33-4		
		90201-12575	14-8								

NUMERICAL INDEX

PART NO.	REF. NO.	PART NO.	REF. NO.	PART NO.	REF. NO.
93450-24062	18- 3	97301-08030	34- 3		
93501-04011	19- 5	97302-06020	16- 7		
93503-16010	10-22	97306-05020	33- 3		
93505-16006	13-17	97306-06012	16-10		
93604-10011	4-19	97306-08012	30-25		
93604-22050	13- 2	97321-06012	11-32		
93604-26132	18- 4	97321-06025	14-11		
94125-18548	23- 5		14-18		
94125-18549	25- 5		14-24		
94225-18149	23- 6	97321-06030	29- 7		
	25- 6	97321-08035	27- 3		
94325-18067	23- 7	98501-04008	3-11		
	25- 7				
94416-18286	23- 8	98501-05012	13- 4		
94416-18287	25- 8	98501-05016	27-10		
94580-34114	25-11	98501-05025	3- 7		
94680-34031	25-12	98502-04008	6-16		
*	1- 2		6-38		
95301-04700	30- 5	98502-05015	6-35		
95301-05600	27-15	98506-05030	31- 7		
95301-06600	10-27		31-13		
95301-06700	14-14	98706-05040	28- 5		
	29-11				
	29-17				
	29-24				
	33-11				
95301-08700	25-15				
	34- 4				
95302-10700	18- 9				
95601-05100	31- 6				
	31-12				
95601-06100	15-22				
	22- 9				
	29-10				
	30-12				
	33- 8				
95601-08100	7- 9				
	20-20				
	27- 4				
	34- 7				
95606-06100	22- 2				
95801-06016	12- 2				
95821-08050	15- 9				
97301-05020	27-14				
97301-06012	30-13				
97301-06015	16- 2				
97301-06020	15-25				
	29-12				
	32- 3				
97301-06025	28- 8				
97301-08020	30-16				
97301-08030	7- 6				





PARTS NAME INDEX

DESCRIPTION	REF. NO.
ARM, float	6- 8
ARM, shift	14-10
ARM, shift Pedal	14-16
AXLE, drive	11-11
AXLE, drive Gear	12- 1
AXLE, main (15T)	11- 1
AXLE, wheel	23-11
*	25-16
BALANCER, wheel	23-10
*	25-10
BALL	10-22
*	13-17
*	19- 5
BAND	15-19
*	32- 2
BAND, rim (2.50-18)	23- 7
*	25- 7
BAND, switch cord	28-13
BAND, tank fitting 1	21-10
BAR, shift fork guide 1	13-10
BAR, shift fork guide 2	13-11
BEARING	17- 4
BEARING (B6200)	4- 7
BEARING (B6204CS)	11-25
BEARING (B6204Z)	11- 9
BEARING (B6205C4)	2- 8
BEARING (B6302Z)	23- 4
*	25- 4
BEARING (B6304C3)	2- 9
BEARING (B696ZZ/ZA)	29-18
BEARING, cylindrical	2- 7
*	2-20
*	4- 9
*	11-10
*	11-24
*	17- 5
BODY, caP	21- 3
BODY, float chamber 1	6-47
BOLT	4-15
*	4-20
*	6- 2
*	7- 6
*	8- 8
*	8- 9
*	8-10
*	9- 2
*	9- 8
*	9- 9

PARTS NAME INDEX

DESCRIPTION	REF. NO.
BOLT	9-10
*	9-11
*	9-13
*	11-32
*	12-11
*	13-15
*	13-20
*	14-11
*	14-18
*	14-24
*	15-25
*	16- 2
*	16- 7
*	16-10
*	18- 8
*	20-25
*	24- 4
*	24-12
*	24-15
*	25-14
*	25-26
*	26- 7
*	26-13
*	27- 3
*	27-14
*	28- 8
*	29- 7
*	29-12
*	29-16
*	30-13
*	30-16
*	30-25
*	32- 3
*	33- 3
*	33- 6
*	34- 3
*	34- 5
BOLT 1	20-15
BOLT, adjusting	29-22
BOLT, axle holder	20-22
BOLT, caP	20-17
BOLT, flange	12- 2
*	15- 9
BOLT, head with hole	5- 5
*	24- 8
*	24-11
*	26- 8
*	26- 9
*	29-30
BOLT, hexagon socket head	29-19

PARTS NAME INDEX

DESCRIPTION	REF. NO.
BOLT, stud	1-13
*	20- 6
BOLT, union	28-11
*	29-34
BOLT, washer based	5-13
*	15- 2
*	15-14
*	15-16
*	19- 8
BOSS 1	29- 5
BOSS, clutch	10- 8
BRACKET, caliper	25-23
BRACKET, engine 2	15- 6
BRACKET, master cylinder	28- 7
BRAKE PAD KIT, front	24- 5
BRAKE PAD KIT, rear	26- 2
BREATHER	8-11
BUSH	17-10
BUSH 1	29- 6
BUSH, rear shock absorber	18- 2
BUSH, solid	12- 7
*	18- 6
BUSH, diaPhragm	28- 6
*	29-28
C.D.I. MAGNETO ASSY	3- 1
C.D.I. UNIT ASSY	32- 1
CABLE, clutch	27-12
CABLE, throttle 1	27-11
CALIPER ASSY	26- 1
CALIPER ASSY (RIGHT)	24- 1
CALIPER SEAL KIT	24- 7
*	26- 4
CAP	24- 3
*	26- 6
CAP, front fork	20-18
CAP, grip lower	27- 9
CAP, grip upper	27- 8
CAP, plunger	6-30
CAP, radiator	5- 2
CAP, reservoir	28- 3
*	29-27
CARBURETOR ASSY 1	6- 4
CHAIN	25-11
CIRCLIP	4- 4
*	4- 8
*	4-13
*	11- 7
*	11-20

## PARTS NAME INDEX

DESCRIPTION	REF. NO.
CIRCLIP	11-22
*	12- 6
*	13-12
*	14- 9
*	18- 3
*	25-22
CLAMP	3-10
*	27-16
*	29-36
CLAMP, hose	5- 9
*	5-15
*	5-17
*	6- 3
CLIP	6-11
*	6-23
*	21- 8
*	21- 9
CLIP, oil seal	20- 4
CLIP, Pipe	6- 7
CLIP, Piston Pin	2-19
CLIP, Plunger	6-32
CLUTCH ASSY	10- 4
COIL, charge 1	3- 4
COIL, charge 2	3- 5
COLLAR	2-13
*	5- 6
*	7- 5
*	11-27
*	15-23
*	17- 2
*	22- 7
*	23-12
*	23-16
*	25-20
*	29-32
*	31- 3
*	31- 9
*	34- 6
COVER, ball race 1	19- 6
COVER, crankcase 1	9- 1
COVER, crankcase 3	9- 3
COVER, dust	14-12
*	14-17
COVER, footrest	29- 2
COVER, housing	4-17
COVER, mixing	6-49
COVER, oil Pump	9-12
COVER, Plunger cap	6-31
COVER, shift Pedal	14-23
*	29-14

## PARTS NAME INDEX

DESCRIPTION	REF. NO.
COVER, thrust 1	14-20
*	18-12
COVER, upper	30- 2
COWLING ASSY	30- 1
CRANK 1	2- 2
CRANK 2	2- 3
CRANKCASE 1	8- 1
CRANKCASE 2	8- 2
CRANKSHAFT ASSY	2- 1
CROWN, handle	20-16
CYLINDER COMP., front fork	20- 8
CYLINDER KIT, master	28- 2
*	29-26
CYLINDER 1	1-10
DAMPER	30-18
DAMPER 2	15- 7
DAMPER, engine mount 1	8- 5
*	15-11
DAMPER, locating 1	15-18
DAMPER, seat	15-21
*	22- 5
DIAPHRAGM, reservoir	28- 4
*	29-29
DISC, brake	24-13
*	26-12
EMBLEM 1	21- 2
ENGINE BRACKET COMP.	15-10
EXHAUST PIPE ASSY 1	7- 1
FLANGE, spacer	25-21
FLANGE, spacer 1	23- 3
*	25- 3
FLOAT	6-15
FORK, shift 1	13- 6
FORK, shift 2	13- 7
FORK, shift 3	13- 8
FRAME COMP	15- 1
FRONT FENDER COMP.	16- 1
FRONT FOOTREST ASSY (L.H)	29- 1
FRONT FORK ASSY	20- 1
FUEL COCK ASSY 1	21- 6
FUEL TANK COMP.	21- 1
GASKET	1- 9
*	6-27
*	8-14
*	10-33
*	12- 3
*	20-14
*	21- 4

## PARTS NAME INDEX

DESCRIPTION	REF. NO.
GASKET, crankcase cover	9- 4
GASKET, cylinder	1-12
GASKET, drain	13-18
GASKET, drain Plug	20-23
GASKET, float chamber	6- 5
GASKET, housing cover 2	4-18
GEAR, drive (14/22T)	4- 1
GEAR, drive (16T)	12- 4
GEAR, driven	12- 8
GEAR, impeller shaft (22T)	4-10
GEAR, Primary drive (21T)	10- 1
GEAR, 1st wheel (29T)	11-12
GEAR, 2nd Pinion (18T)	11- 5
GEAR, 2nd wheel (26T)	11-18
GEAR, 3rd wheel (28T)	11-14
GEAR, 3rd/4th Pinion (23/25T)	11- 3
GEAR, 4th wheel (27T)	11-15
GEAR, 5th Pinion (23T)	11- 2
GEAR, 5th wheel (23T)	11-13
GEAR, 6th Pinion (27T)	11- 4
GEAR, 6th wheel (25T)	11-17
GRAPHIC, cowling 1	30-10
GRIP (L.H)	27- 5
GRIP (R.H)	27- 6
GROMMET	5- 4
*	7- 4
*	15-20
*	29-31
*	31- 4
*	31-10
GUARD, mud	16- 9
GUIDE, cable	6-26
GUIDE, spring 1	18- 5
HANDLEBAR (L.H)	27- 1
HANDLEBAR (R.H)	27- 2
HANDLEBAR SHIMMY DAMPER ASSY	34- 1
HEAD	30- 6
HEAD, cylinder 1	1- 1
HOLDER	8-16
HOLDER, axle	20-19
HOLDER, brake hose 1	16- 5
HOLDER, lever lower 1	33- 2
HOLDER, lever 1	33- 1
HOLDER, nozzle	6-19
HOSE	1-14
*	6-37
*	8-12
*	21- 5



## PARTS NAME INDEX

DESCRIPTION	REF. NO.
HOSE	21- 7
HOSE, brake 1	28-10
*	29-33
HUB, front	23- 1
HUB, rear	25- 1
IGNITION COIL ASSY	32- 5
IMPELLER SHAFT ASSY	4- 5
INNER TUBE COMP.1	20- 7
JET, main (#220)	6-40
JET, main (#230)	6-40
JET, main (#240)	6-40
JET, main (#250)	6-40
JET, main (#260)	6-40
JET, main (#270)	6-40
JET, main (#280)	6-40
JET, main (#290)	6-40
JET, main (#300)	6-40
JET, main (#310)	6-40
JET, main (#320)	6-40
JET, Pilot (#70.0)	6-44
JET, Power (#050.0)	6-48
JET, Power (#055.0)	6-48
JET, Power (#060.0)	6-48
JET, Power (#065.0)	6-48
JET, Power (#070.0)	6-48
JET, Power (#075.0)	6-48
JET, Power (#080.0)	6-48
JOINT	5-10
*	34- 2
JOINT, chain	25-12
KEY, straight	2-14
*	4-11
KEY, woodruff	2-15
LEAD WIRE ASSY	3- 6
LEVER 1	33- 5
LEVER 2	33- 9
MANIFOLD, intake	6- 1
MASTER CYLINDER ASSY	28- 1
*	29-25
NEEDLE	6-41
NEEDLE VALVE ASSY	6-46
NIPPLE, hose 1	1-11
NOZZLE, main	6-42
NUT	1- 6
*	10- 2
*	10-19
*	10-27
*	11-29

## PARTS NAME INDEX

DESCRIPTION	REF. NO.
NUT	14- 5
*	14-14
*	14-15
*	17- 9
*	18- 9
*	19- 7
*	25-15
*	27-15
*	29- 3
*	29-11
*	29-17
*	29-24
*	30- 5
*	33-11
*	33-13
*	34- 4
NUT, adjusting	29-23
NUT, cable adjusting	6-25
NUT, castle	23-13
*	25-18
NUT, rotor	3-14
NUT, self-locking	15- 5
*	15-13
*	29-20
NUT, u	7- 9
*	15-22
*	20-20
*	22- 2
*	22- 9
*	27- 4
*	29-10
*	30-12
*	31- 6
*	31-12
*	33- 8
*	34- 7
O-RING	1- 3
*	1- 4
*	2-12
*	5-11
*	6-14
*	6-18
*	6-20
*	7- 2
*	8- 7
*	9- 6
*	10-17
*	31-14
OIL SEAL	2-10
*	2-11

## PARTS NAME INDEX

DESCRIPTION	REF. NO.
OIL SEAL	4- 6
*	10- 6
*	10-14
*	10-20
*	10-31
*	11-26
*	12-10
*	14- 7
*	17- 6
*	20- 5
*	29-13
PEDAL, brake	14-22
PEDAL, shift	18-13
PIN, clevis	18-11
PIN, cotter	18-15
*	23-15
*	25-19
PIN, crank 1	2- 5
PIN, dowel	4-19
*	8- 3
*	8- 4
*	9- 7
*	13- 2
*	18- 4
PIN, float	6- 6
PIN, piston	2-18
PIN, straight	1- 5
*	13- 9
PIPE 1	5- 8
PIPE 2	5-14
PIPE 3	5-16
PIPE, breather	5- 3
PISTON (STD)	2-16
*	2-16
*	2-16
PISTON ASSY, caliPer	24- 6
*	26- 3
PLATE, clutch 2	10- 9
PLATE, cover	11-31
PLATE, friction	10-10
PLATE, Pressure 1	10-11
PLATE, Push	10-24
PLATE, side 1	13- 3
PLUG	1- 8
*	13-13
*	13-14
*	15-17
PLUG CAP ASSY	32- 8



## PARTS NAME INDEX

DESCRIPTION	REF. NO.
PLUG CAP ASSY	32- 8
PLUG, drain	20-24
PLUG, oil level	9- 5
PLUG, screw	6-13
*	6-21
PLUG, sPark (CHAMPION N82G)	1- 2
PLUG, straight screw	1-15
*	8-13
PLUNGER, starter	6-34
PRIMARY DRIVEN GEAR COMP.	10- 5
PULLER, chain 1	25-13
PULLER, rotor	32-10
PUSH LEVER ASSY	10-28
RACE, ball 1	19- 1
*	19- 4
RACE, ball 2	19- 2
*	19- 3
RADIATOR ASSY	5- 1
REAR ARM COMP.	17- 1
RIM (1.60-18)	23- 8
*	25- 8
RING 1	24-14
RING, Piston	2-17
RIVET	30- 7
RIVET, round head	30- 8
ROD, connecting	2- 4
ROD, Push 1	10-23
ROD, Push 2	10-21
ROD, shift	14-13
ROTOR ASSY	3- 2
SCREW	10-13
*	10-32
*	14- 4
*	22- 6
*	33-12
SCREW, air adjusting	6-45
SCREW, breed	24- 2
*	26- 5
SCREW, cable adjusting	6-24
SCREW, flat head	28- 5
SCREW, lever fitting	33-10
SCREW, Pan head	3- 7
*	3-11
*	3-16
*	6-16
*	6-35
*	6-38
*	8-17
*	13- 4

## PARTS NAME INDEX

DESCRIPTION	REF. NO.
SCREW, Pan head	27-10
*	27-14
*	30-20
*	31- 7
*	31-13
*	32- 6
SCREW, round head	30- 4
*	30-23
SEAL, crankcase	8-15
SEAL, dust	20-10
SEAL, Guard	17- 7
SEAT, sPring	6-10
SHAFT	4- 2
SHAFT, Pivot	17- 8
SHAFT, shift 2	14-19
SHIFT CAM ASSY	13- 1
SHIFT SHAFT ASSY	14- 1
SHIM (0.2T)	17- 3
SHIM (0.3T)	17- 3
SHIM 1 (0.6T)	11-19
SHOCK ABSORBER ASSY, rear	18- 1
SINGLE SEAT ASSY	22- 1
SPACER	15- 8
*	23- 2
*	25- 2
SPACER 1	10-16
SPACER 2	10- 7
SPACER 3	10-15
SPACER, engine mount	8- 6
SPINDLE, Paper	20- 9
SPOKE SET, front	23- 9
SPOKE SET, rear	25- 9
SPRING	18- 7
*	30- 9
SPRING, air adjusting	6-29
SPRING, compression	10-12
*	13-16
*	33-14
SPRING, front fork	20-12
SPRING, lock	27-13
SPRING, Plunger	6-33
SPRING, tension	7- 3
*	13-21
*	14- 2
SPRING, throttle valve	6-28
SPRING, torsion	10-29
*	14- 3
*	29-15

## PARTS NAME INDEX

DESCRIPTION	REF. NO.
SPROCKET, drive (14T)	11-28
SPROCKET, drive (15T)	11-28
SPROCKET, drive (16T)	11-28
SPROCKET, drive (17T)	11-28
SPROCKET, driven (33T)	25-24
SPROCKET, driven (34T)	25-24
SPROCKET, driven (35T)	25-24
SPROCKET, driven (36T)	25-24
SPROCKET, driven (37T)	25-24
SPROCKET, driven (38T)	25-24
SPROCKET, driven (39T)	25-24
STATOR ASSY	3- 3
STAY	15-24
STAY 1	30-15
STAY 2	30-11
*	30-24
STAY 3	30-19
STAY, front	22- 4
STOPPER	4-14
STOPPER LEVER ASSY	13-19
SWITCH, handle 1	33-15
TACHOMETER ASSY	31- 1
TACHOMETER CABLE ASSY	31- 2
TIRE (2.50-18)	23- 5
*	25- 5
TOP, mixing chamber	6-22
TUBE (2.50-18)	23- 6
*	25- 6
TUBE, outer 1	20- 2
TUBE, outer 2	20- 3
TUBE, throttle guide	27- 7
UNDER BRACKET COMP.	20-11
VALVE, throttle 1	6-43
WASHER	2- 6
*	11-23
*	16- 4
*	24-16
*	25-25
*	26-14
WASHER, lock	10-18
*	11-30
*	14- 6
WASHER, main Jet	6-12
WASHER, needle valve	6- 9
WASHER, Plain	10-25
*	15- 4
*	15-12
*	15-28
*	22-10
*	23-14
*	34- 8

PARTS NAME INDEX

DESCRIPTION	REF. NO.
WASHER, Plate .....	1- 7
*	3- 9
*	3-13
*	3-18
*	4- 3
*	4-12
*	5- 7
*	7- 7
*	7- 8
*	10-30
*	11- 6
*	11-21
*	12- 5
*	12- 9
*	14- 8
*	14-21
*	15- 3
*	15-27
*	16- 6
*	16-12
*	18-10
*	18-14
*	20-21
*	22- 3
*	22- 8
*	24-10
*	25-17
*	26-10
*	28-12
*	29- 9
*	29-21
*	29-35
*	30-22
*	31- 5
*	31-11
*	32- 4
*	33- 7
WASHER, Plate (0.2T) .....	11-16
WASHER, Plate (1.0T) .....	11- 8
WASHER, Plate (1.5T) .....	11- 8
WASHER, rotor .....	3-15
WASHER, seal .....	5-12
WASHER, sPring .....	3- 8
*	3-12
*	3-17
*	4-16
*	6-17
*	6-36
*	6-39
*	10- 3

PARTS NAME INDEX

DESCRIPTION	REF. NO.
WASHER, sPring .....	10-26
*	13- 5
*	15-15
*	15-26
*	16- 3
*	16- 8
*	16-11
*	24- 9
*	26-11
*	27-15
*	28- 9
*	29- 4
*	29- 8
*	30-14
*	30-17
*	30-21
*	30-26
*	32- 7
*	33- 4
WASHER, sPring uPPer .....	20-13
WATER TEMPERATURE ASSY .....	31- 8
WINDSHIELD .....	30- 3
WIRE HARNESS ASSY .....	32- 9



COPY RIGHT: ALL RIGHTS RESERVED  
NO PART OF THIS PUBLICATION MAY BE  
REPRODUCED WITHOUT PERMISSION.

[www.legends-yamaha-enduros.com](http://www.legends-yamaha-enduros.com)



**YAMAHA**

YAMAHA MOTOR CO., LTD.  
2500 SHINGAI IWATA-SHI SHIZUOKA-KEN JAPAN

**PRINTED IN JAPAN**

**First edition Dec., 1980**

**T.G**