

MODEL YZ125A

NOTICE

ALL PART NUMBERS CONTAINED IN THIS CATALOGUE ARE COMPRISED OF TEN DIGITS. WHEN ORDERING, PLEASE ADD TWO ZEROS TO THE END OF EACH PART NUMBER REQUIRED TO CONVERT THE TEN DIGITS INTO THE NEW TWELVE DIGIT NUMBERS.

This Parts List is for the exclusive parts for YZ125A. Please refer to MX125 Parts List for the parts not listed in this publication.

www.legends-yamaha-enduros.com

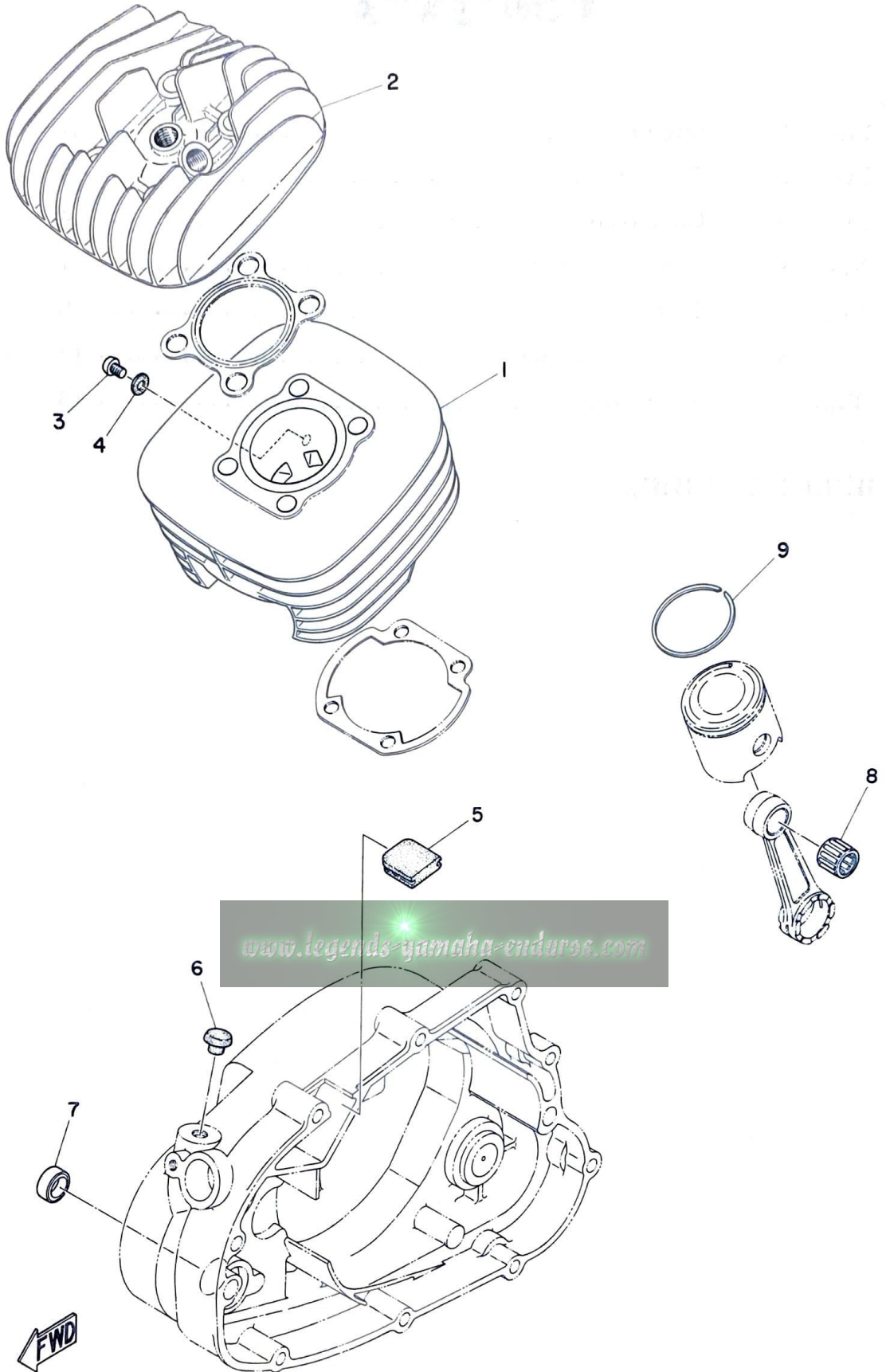


CONTENTS

Fig. 1	Engine	1
Fig. 2	Transmission	3
Fig. 3	Carburetor · Exhaust	5
Fig. 4	Frame · Front fork	7
Fig. 5	Fuel Tank · Wheel	9
Fig. 6	C.D.I. Magneto	11
Fig. 7	Electrical	13

NUMERICAL INDEX

Fig. 1 ENGINE

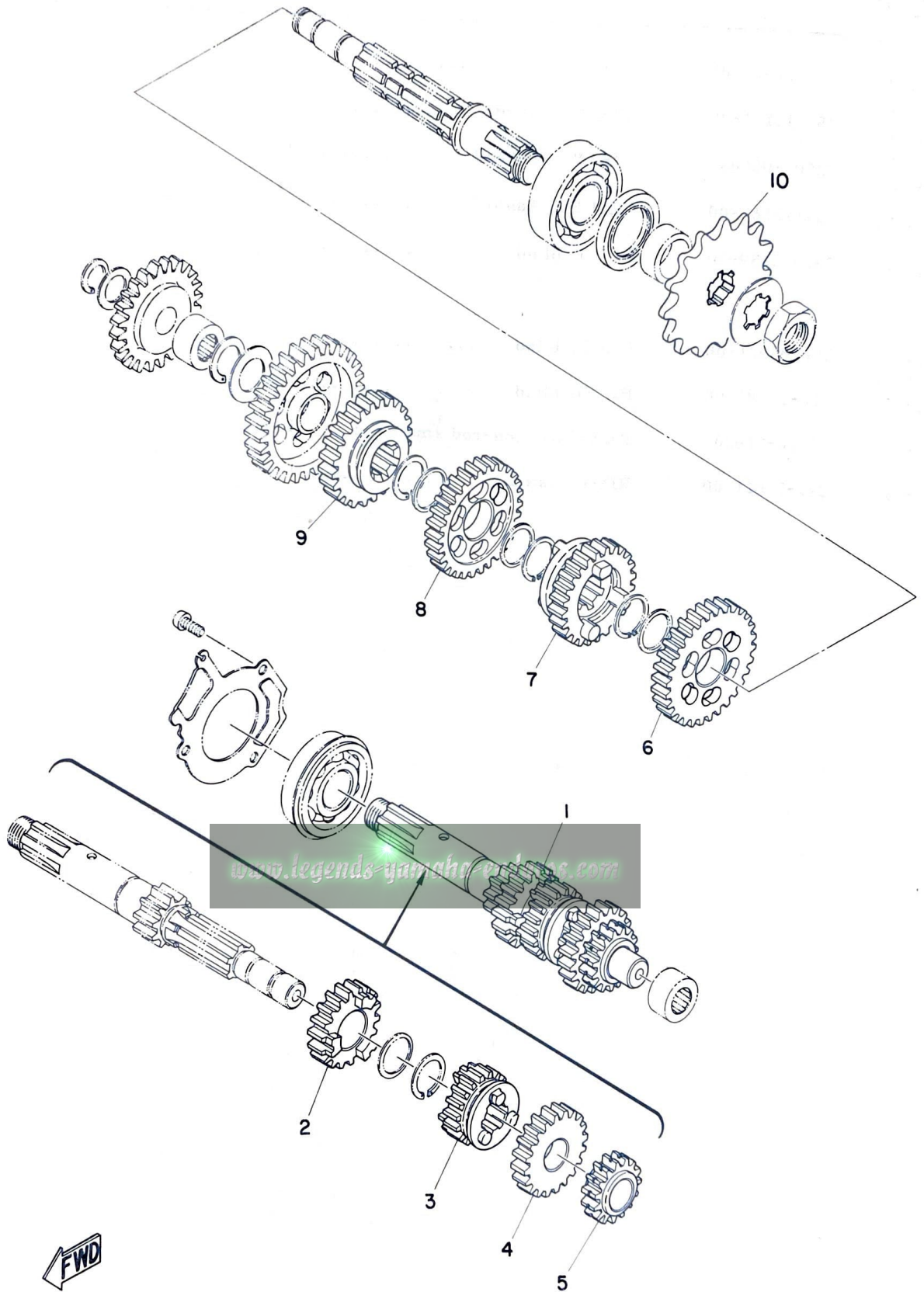


ENGINE

Ref. No.	Parts No.	Description	Q'ty	Applicable Machine No.	Remarks
1- 1	453-11311-00	CYLINDER	1		
1- 2	453-11111-00	HEAD, cylinder	1		
1- 3	92501-06008	SCREW, panhead	1		
1- 4	137-13167-00	GASKET, banjo 2	1		
1- 5	345-15439-00	PLUG, blind	1		
1- 6	116-83931-00	PLUG, blind	1		
1- 7	168-17481-00	PLUG, blind	1		
1- 8	93310-21680	BEARING, con-rod small end ..	1		
1- 9	240-11611-00	RING, piston	1		

www.legends-yamaha-enduros.com

Fig. 2 TRANSMISSION



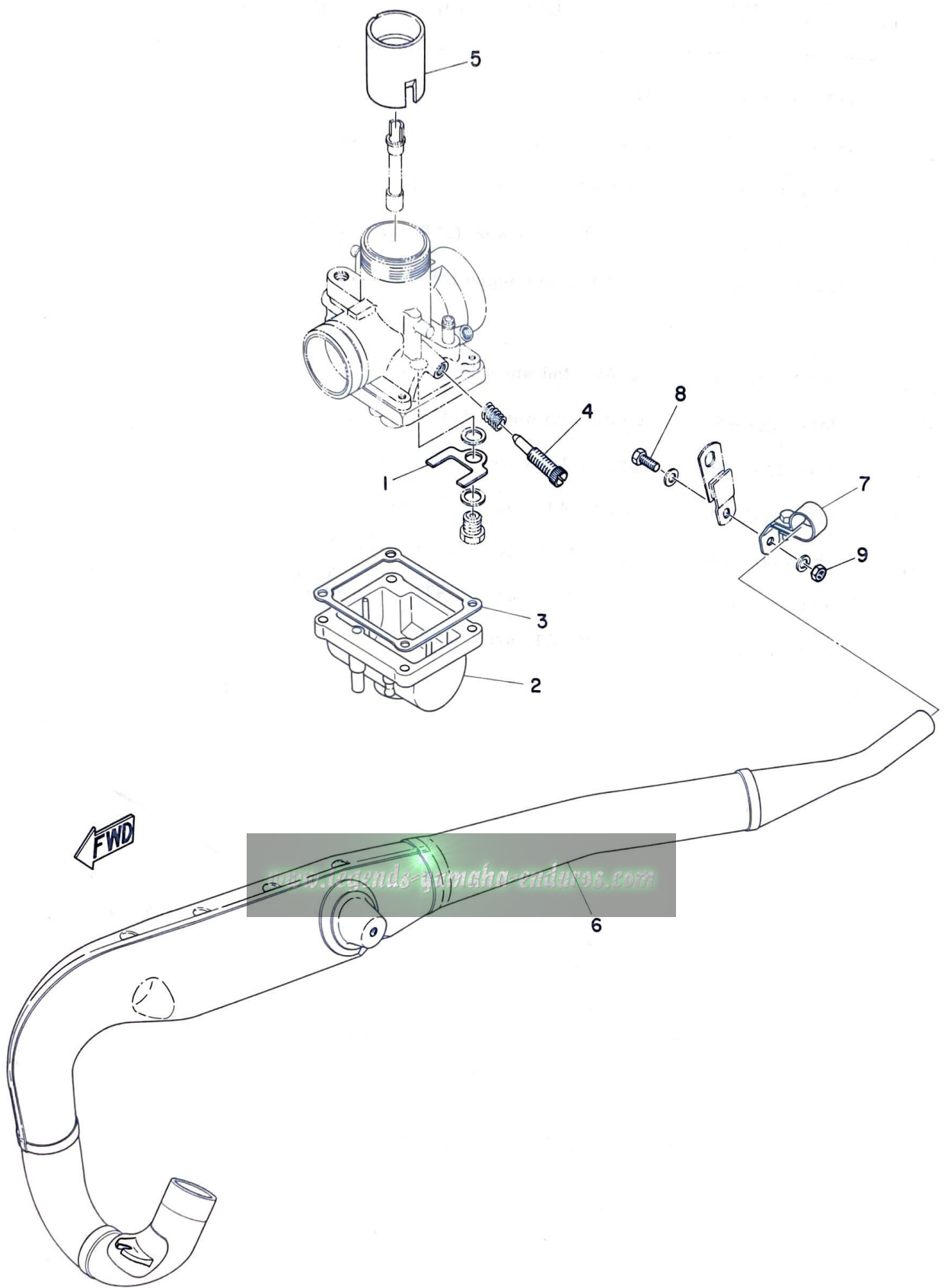
TRANSMISSION

Ref. No.	Parts No.	Description	Q'ty	Applicable Machine No.	Remarks
2- 1	401-17410-00	MAIN AXLE COMP.	1		
2- 2	401-17141-00	. GEAR, 4th pinion (19T)	1		
2- 3	401-17131-01	. GEAR, 3rd pinion (18T)	1		
2- 4	401-17151-01	. GEAR, 5th pinion (21T)	1		
2- 5	401-17121-00	. GEAR, 2nd pinion (15T)	1		
2- 6	401-17221-00	GEAR, 2nd wheel (31T)	1		
2- 7	401-17251-00	GEAR, 5th wheel (24T)	1		
2- 8	401-17231-00	GEAR, 3rd wheel (29T)	1		
2- 9	317-17241-10	GEAR, 4th wheel (25T)	1		
2-10	174-17461-30	SPROCKET, drive (13T)	} U.R 1		
	174-17461-40	SPROCKET, drive (14T)			
	174-17461-50	SPROCKET, drive (15T)			

STD

www.legends-yamaha-enduros.com

Fig. 3 CARBURETOR · EXHAUST

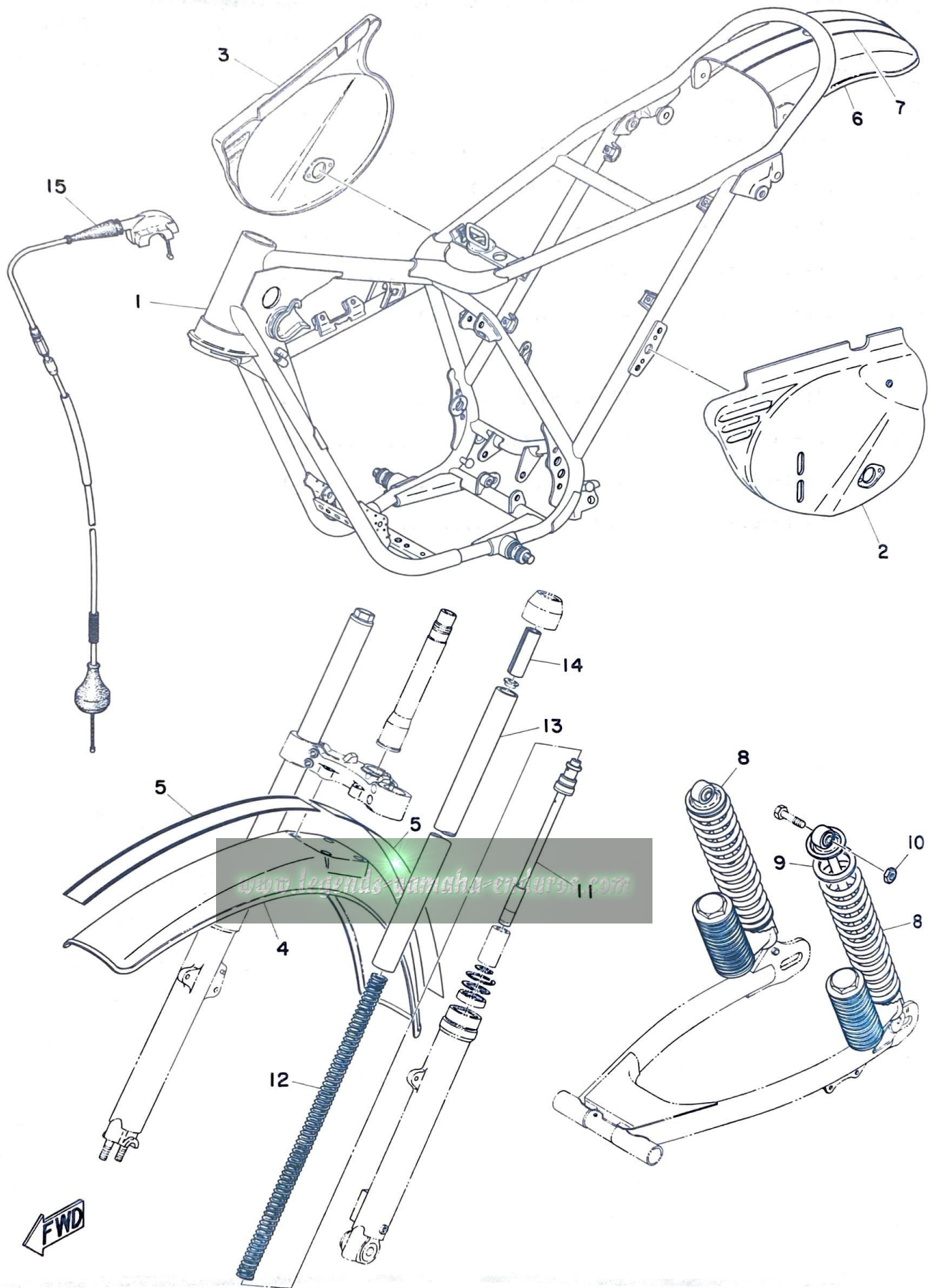


CARBURETOR · EXHAUST

Ref. No.	Parts No.	Description	Q'ty	Applicable Machine No.	Remarks
3- 0-1	401-14101-00	CARBURETOR ASS'Y	1		
3- 1	346-14146-70	. PLATE	1		
3- 2	278-14181-00-33	. BODY, float chamber	1		
3- 3	278-14184-00	. GASKET, float chamber	1		
3- 4	204-14122-00-33	. SCREW, throttle	1		
3- 5	278-14112-25	. VALVE, throttle (#2.5)	1		
3- 6	401-14610-00	EXHAUST PIPE ASS'Y	1		
3- 7	401-14771-00	STAY, muffler	1		
3- 8	91201-06018	BOLT	1		
3- 9	98801-06100	NUT	1		

www.legends-yamaha-enduros.com

Fig. 4 FRAME · FRONT FORK

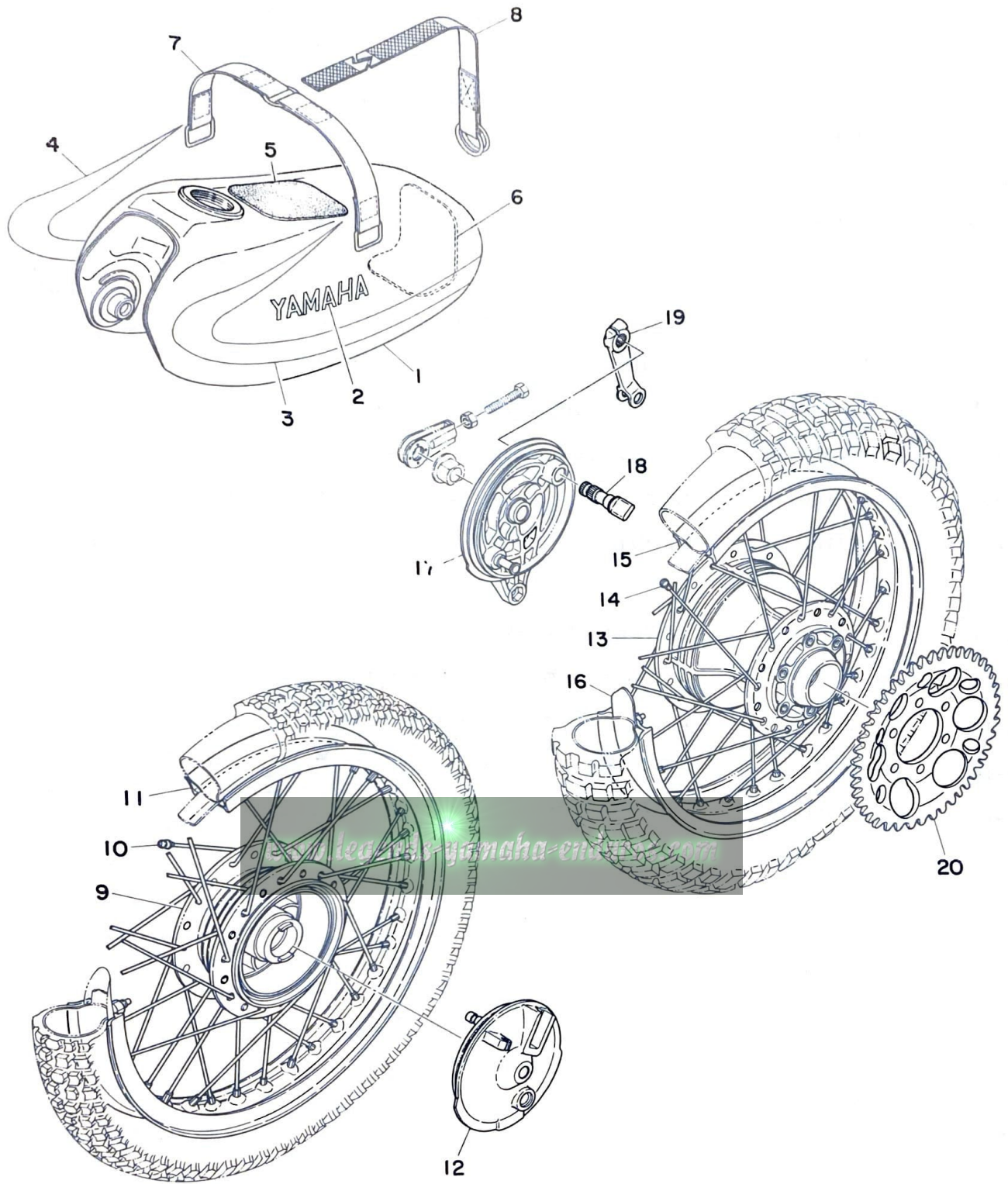


FRAME · FRONT FORK

Ref. No.	Parts No.	Description	Q'ty	Applicable Machine No.	Remarks
4- 1	453-21110-00-33	FRAME COMP.	1		Yamaha Black
4- 2	401-21711-00-03	COVER, side left	1		Crystal Silver
4- 3	401-21721-00-20	COVER, side right	1		Crystal Silver
4- 4	401-21511-00-20	FENDER, front	1		Crystal Silver
4- 5	324-21519-00	STRIPE, front fender	2		
4- 6	401-21611-00-20	FENDER, rear	1		Crystal Silver
4- 7	324-21619-00	STRIPE, rear fender	1		
4- 8	453-22210-00	REAR CUSHION ASS'Y	2		
4- 9	322-22213-20	. SEAT, spring upper	2		
4-10	90185-10037	NUT	1		
4- 0-1	401-23101-00	FRONT FORK ASS'Y	1		
4-11	401-23170-00	. CYLINDER COMP.	2		
4-12	401-23141-00	. SPRING, fork	2		
4-13	401-23124-00	. TUBE, inner	2		
4-14	401-23118-00	. SPACER	2		
4-15	401-26311-00	WIRE, throttle 1	1		

www.legends-yamaha-enduros.com

Fig. 5 FUEL TANK · WHEEL

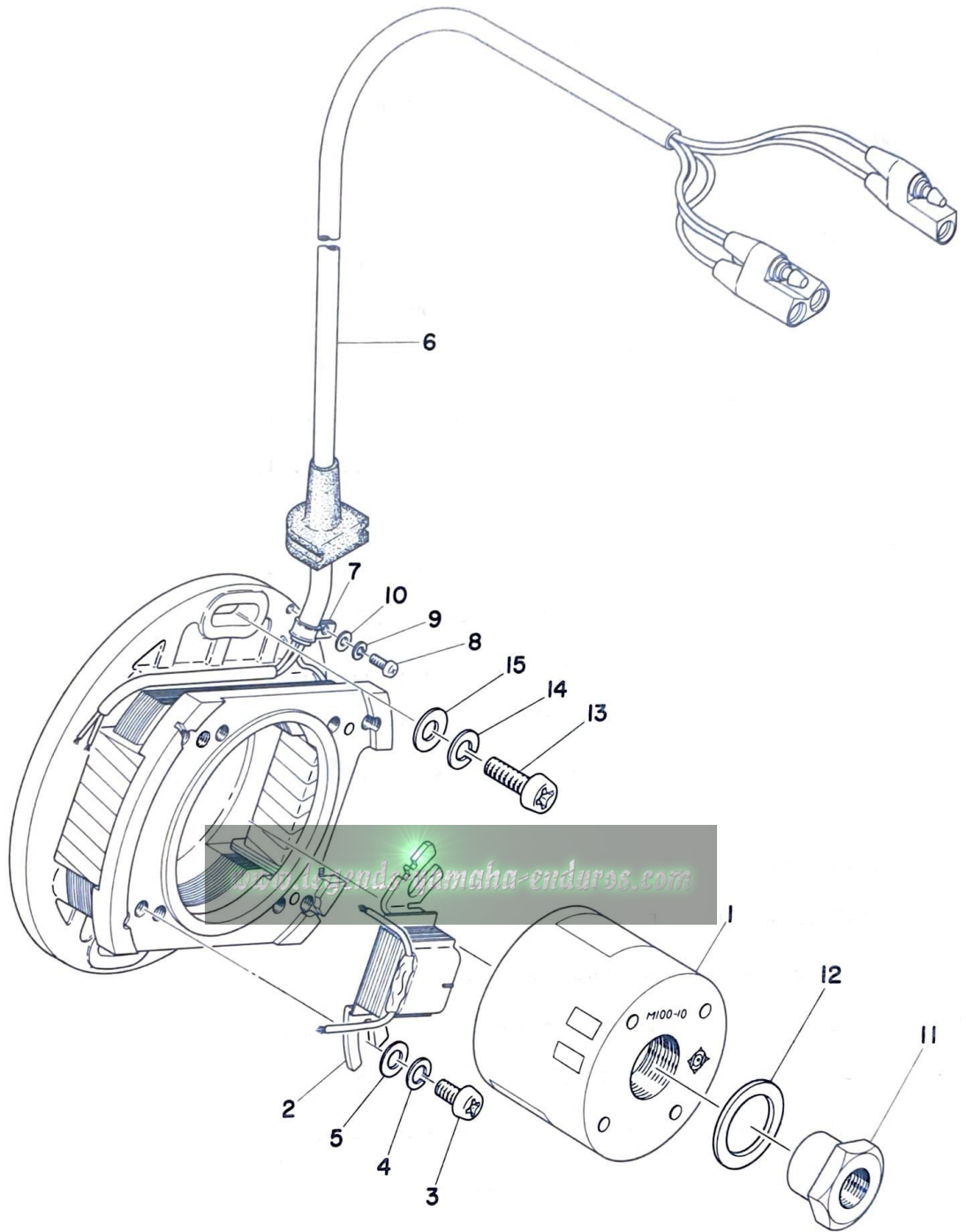


FWD

FUEL TANK · WHEEL

Ref. No.	Parts No.	Description	Q'ty	Applicable Machine No.	Remarks
5- 1	453-24110-00-01	FUEL TANK COMP.	1		Crystal Silver
5- 2	322-24161-00	. EMBLEM, fuel tank	2		
5- 3	453-24244-00	. GRAPHIC, fuel tank left	1		
5- 4	453-24245-00	. GRAPHIC, fuel tank right	1		
5- 5	431-24182-00	DAMPER 1	1		
5- 6	431-24183-00	DAMPER 2	1		
5- 7	431-24199-00	BAND, tank fitting front	1		
5- 8	431-24173-00	BAND, tank fitting rear	1		
5- 9	248-25111-00-98	HUB, front	1		
5-10	345-25104-00	SPOKE SET	1s		
5-11	94416-21114	RIM, front (1.60A-21)	1		
5-12	401-25121-00-98	PLATE, brake shoe	1		
5-13	403-25311-00-98	HUB, rear	1		
5-14	401-25304-00	. SPOKE SET	1s		
5-15	94418-18115	RIM, rear (1.85B-18)	1		
5-16	214-25394-00	SPACER, bead	2		
5-17	401-25321-00-98	PLATE, brake shoe	1		
5-18	401-25351-00	CAMSHAFT	1		
5-19	431-25355-00	LEVER, camshaft	1		
5-20	401-25445-00	GEAR, sprocket wheel (45T) ...	} U.R 1		STD
	401-25447-00	GEAR, sprocket wheel (47T) ...			
	401-25449-00	GEAR, sprocket wheel (49T) ...			

Fig. 6 C.D.I. MAGNETO

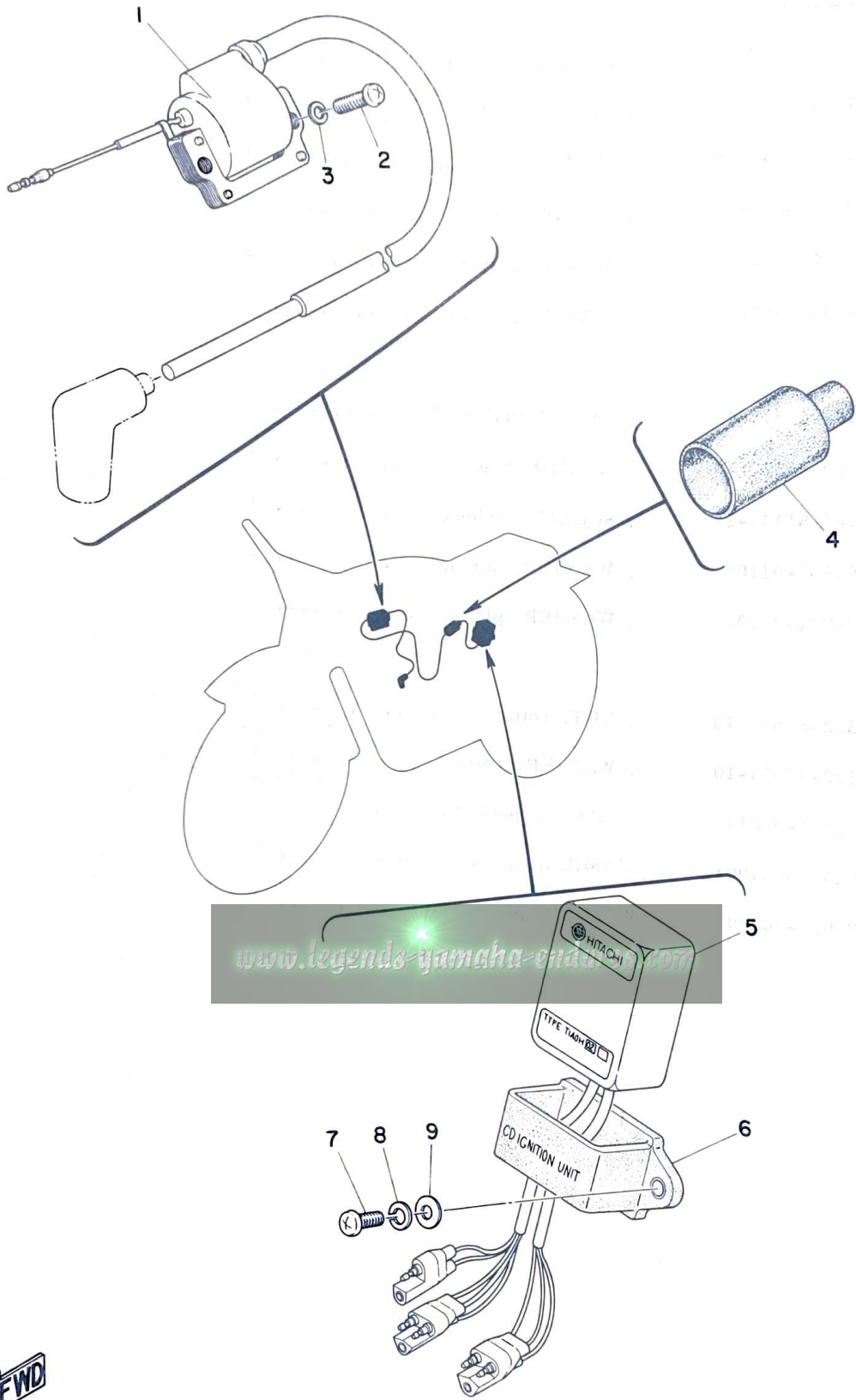


C.D.I. MAGNETO

Ref. No.	Parts No.	Description	Q'ty	Applicable Machine No.	Remarks
6- 0-1	401-85500-11	C.D.I. MAGNETO ASS'Y	1		
6- 1	401-85550-10	. ROTOR ASS'Y	1		
6- 2	364-85543-10	. COIL, pulser	1		
6- 3	98501-05010	. SCREW, panhead	2		
6- 4	92901-05100	. WASHER, spring	2		
6- 5	92901-05200	. WASHER, plain	2		
6- 6	401-85515-10	. LEAD WIRE ASS'Y	1		
6- 7	109-81328-10	. CLAMP, lead	1		
6- 8	165-81145-21	. SCREW, panhead	1		
6- 9	92901-04100	. WASHER, spring	1		
6-10	92901-04200	. WASHER, plain	1		
6-11	322-85553-10	. NUT, rotor	1		
6-12	322-85554-10	. WASHER, rotor	1		
6-13	92501-06018	. SCREW, panhead	2		
6-14	92901-06100	WASHER, spring	2		
6-15	92901-06200	WASHER, plain	2		

www.legends-yamaha-enduros.com

Fig. 7 ELECTRICAL



ELECTRICAL

Ref. No.	Parts No.	Description	Q'ty	Applicable Machine No.	Remarks
7- 1	322-82310-10	IGNITION COIL ASS'Y 1		
7- 2	92501-06025	SCREW, panhead 2		
7- 3	92901-06100	WASHER, spring 2		
7- 4	256-82599-00	COVER, connector 1		
7- 5	364-85540-13	C. D. I. UNIT ASS'Y 1		
7- 6	363-85546-00	BAND 1		
7- 7	92501-06018	SCREW, panhead 2		
7- 8	92901-06100	WASHER, spring 2		
7- 9	136-22316-00	WASHER, chain case 2		

www.legends-yamaha-enduros.com

NUMERICAL INDEX

Ref No.	Parts No.	Ref No.	Parts No.	Ref No.	Parts No.
6- 7	109-81328-10	2- 6	401-17221-00	3- 8	91201-06018
1- 6	116-83931-00	2- 8	401-17231-00	1- 3	92501-06008
7- 9	136-22316-00	2- 7	401-17251-00	6-13	92501-06018
1- 4	137-13167-00	2- 1	401-17410-00	7- 7	92501-06018
6- 8	165-81145-21	4- 4	401-21511-00-20	7- 2	92501-06025
1- 7	168-17481-00	4- 6	401-21611-00-20	6- 9	92901-04100
2-10	174-17461-30	4- 2	401-21711-00-03	6-10	92901-04200
2-10	174-17461-40	4- 3	401-21721-00-20	6- 4	92901-05100
2-10	174-17461-50	4- 0-1	401-23101-00	6- 5	92901-05200
3- 4	204-14122-00-33	4-14	401-23118-00	6-14	92901-06100
5-16	214-25394-00	4-13	401-23124-00	7- 3	92901-06100
1- 9	240-11611-00	4-12	401-23141-00	7- 8	92901-06100
5- 9	248-25111-00-98	4-11	401-23170-00	6-15	92901-06200
7- 4	256-82599-00	5-12	401-25121-00-98	1- 8	93310-21680
3- 5	278-14112-25	5-14	401-25304-00	5-11	94416-21114
3- 2	278-14181-00-33	5-17	401-25321-00-98	5-15	94418-18115
3- 3	278-14184-00	5-18	401-25351-00	6- 3	98501-05010
2- 9	317-17241-10	5-20	401-25445-00	3- 9	98801-06100
4- 9	322-22213-20	5-20	401-25447-00		
5- 2	322-24161-00	5-20	401-25449-00		
7- 1	322-82310-10	4-15	401-26311-00		
6-11	322-85553-10	6- 0-1	401-85500-11		
6-12	322-85554-10	6- 6	401-85515-10		
4- 5	324-21519-00	6- 1	401-85550-10		
4- 7	324-21619-00	5-13	403-25311-00-98		
1- 5	345-15439-00	5-8	431-24173-00		
5-10	345-25104-00	5- 5	431-24182-00		
3- 1	346-14146-70	5- 6	431-24183-00		
7- 6	363-85546-00	5- 7	431-24199-00		
7- 5	364-85540-13	5-19	431-25355-00		
6- 2	364-85543-10	1- 2	453-11111-00		
3- 0-1	401-14101-00	1- 1	453-11311-00		
3- 6	401-14610-00	4- 1	453-21110-00-33		
3- 7	401-14771-00	4- 8	453-22210-00		
2- 5	401-17121-00	5- 1	453-24110-00-01		
2- 3	401-17131-01	5- 3	453-24244-00		
2- 2	401-17141-00	5- 4	453-24245-00		
2- 4	401-17151-01	4-10	90185-10037		

1-1	1-1	1-1	1-1
1-2	1-2	1-2	1-2
1-3	1-3	1-3	1-3
1-4	1-4	1-4	1-4
1-5	1-5	1-5	1-5
1-6	1-6	1-6	1-6
1-7	1-7	1-7	1-7
1-8	1-8	1-8	1-8
1-9	1-9	1-9	1-9
1-10	1-10	1-10	1-10
1-11	1-11	1-11	1-11
1-12	1-12	1-12	1-12
1-13	1-13	1-13	1-13
1-14	1-14	1-14	1-14
1-15	1-15	1-15	1-15
1-16	1-16	1-16	1-16
1-17	1-17	1-17	1-17
1-18	1-18	1-18	1-18
1-19	1-19	1-19	1-19
1-20	1-20	1-20	1-20
1-21	1-21	1-21	1-21
1-22	1-22	1-22	1-22
1-23	1-23	1-23	1-23
1-24	1-24	1-24	1-24
1-25	1-25	1-25	1-25
1-26	1-26	1-26	1-26
1-27	1-27	1-27	1-27
1-28	1-28	1-28	1-28
1-29	1-29	1-29	1-29
1-30	1-30	1-30	1-30
1-31	1-31	1-31	1-31
1-32	1-32	1-32	1-32
1-33	1-33	1-33	1-33
1-34	1-34	1-34	1-34
1-35	1-35	1-35	1-35
1-36	1-36	1-36	1-36
1-37	1-37	1-37	1-37
1-38	1-38	1-38	1-38
1-39	1-39	1-39	1-39
1-40	1-40	1-40	1-40
1-41	1-41	1-41	1-41
1-42	1-42	1-42	1-42
1-43	1-43	1-43	1-43
1-44	1-44	1-44	1-44
1-45	1-45	1-45	1-45
1-46	1-46	1-46	1-46
1-47	1-47	1-47	1-47
1-48	1-48	1-48	1-48
1-49	1-49	1-49	1-49
1-50	1-50	1-50	1-50
1-51	1-51	1-51	1-51
1-52	1-52	1-52	1-52
1-53	1-53	1-53	1-53
1-54	1-54	1-54	1-54
1-55	1-55	1-55	1-55
1-56	1-56	1-56	1-56
1-57	1-57	1-57	1-57
1-58	1-58	1-58	1-58
1-59	1-59	1-59	1-59
1-60	1-60	1-60	1-60
1-61	1-61	1-61	1-61
1-62	1-62	1-62	1-62
1-63	1-63	1-63	1-63
1-64	1-64	1-64	1-64
1-65	1-65	1-65	1-65
1-66	1-66	1-66	1-66
1-67	1-67	1-67	1-67
1-68	1-68	1-68	1-68
1-69	1-69	1-69	1-69
1-70	1-70	1-70	1-70
1-71	1-71	1-71	1-71
1-72	1-72	1-72	1-72
1-73	1-73	1-73	1-73
1-74	1-74	1-74	1-74
1-75	1-75	1-75	1-75
1-76	1-76	1-76	1-76
1-77	1-77	1-77	1-77
1-78	1-78	1-78	1-78
1-79	1-79	1-79	1-79
1-80	1-80	1-80	1-80
1-81	1-81	1-81	1-81
1-82	1-82	1-82	1-82
1-83	1-83	1-83	1-83
1-84	1-84	1-84	1-84
1-85	1-85	1-85	1-85
1-86	1-86	1-86	1-86
1-87	1-87	1-87	1-87
1-88	1-88	1-88	1-88
1-89	1-89	1-89	1-89
1-90	1-90	1-90	1-90
1-91	1-91	1-91	1-91
1-92	1-92	1-92	1-92
1-93	1-93	1-93	1-93
1-94	1-94	1-94	1-94
1-95	1-95	1-95	1-95
1-96	1-96	1-96	1-96
1-97	1-97	1-97	1-97
1-98	1-98	1-98	1-98
1-99	1-99	1-99	1-99
1-100	1-100	1-100	1-100

www.legends-yamaha-enduros.com



YAMAHA MOTOR CO., LTD.

PRINTED IN JAPAN
First edition May, 1973
(LIT-10014-53-00)(453-80)