

[www.legends-yamaha-enduros.com](http://www.legends-yamaha-enduros.com)

**MODEL DT125**

**(TYPE AT2)**

**for EUROPE**

# ORDERING GUIDE

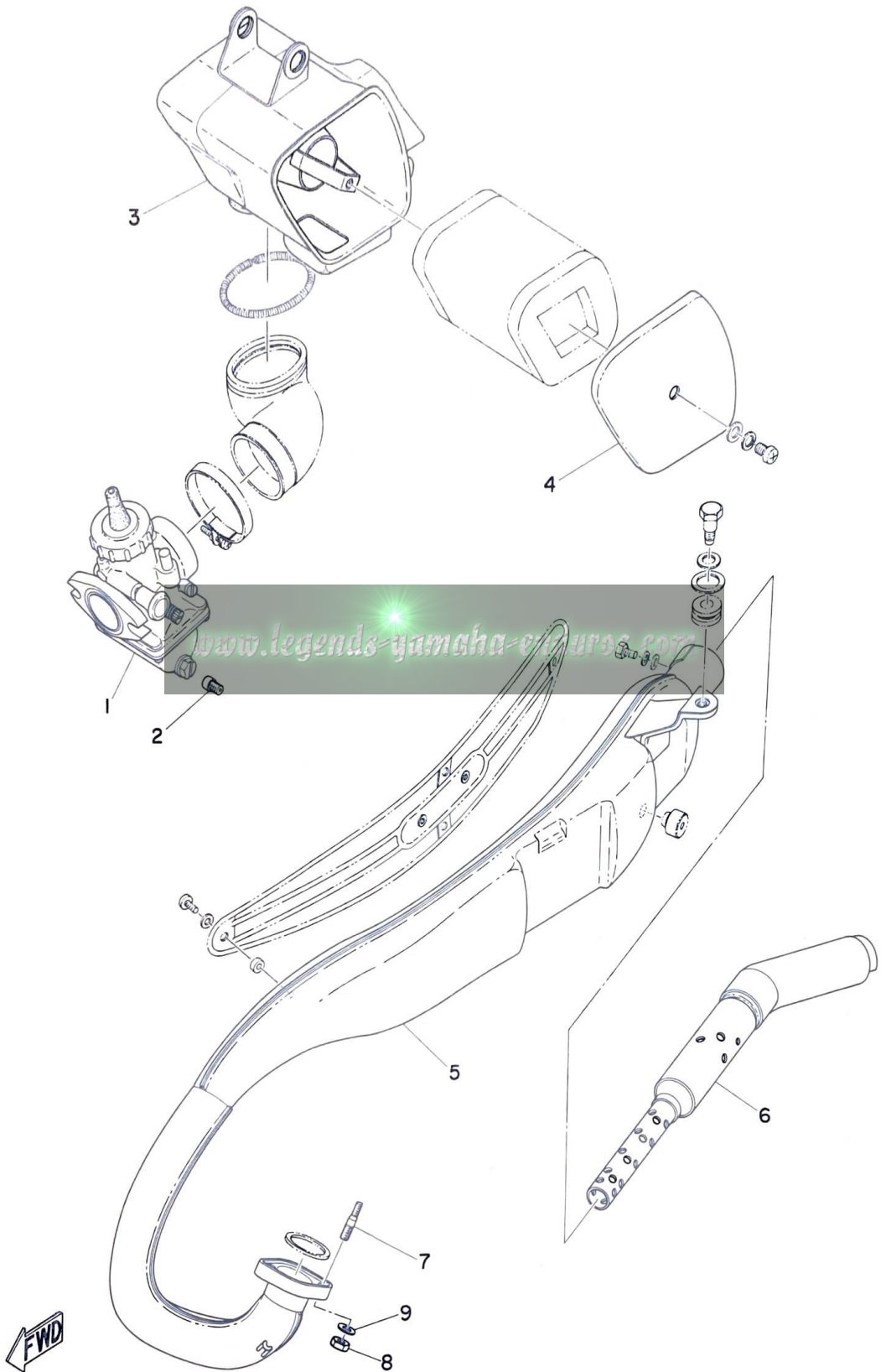
1. This Parts List is exclusive for DT125 Europe model.  
Please refer to AT2J/AT3F Parts List (AT3F Q'ty column) for the parts not listed in this publication.
2. The parts marked with \* in the remark column of this list are not supplied with by Yamaha, those have to be found locally.
3. Please be advised that we supply you with Head Lamp Unit Ass'Y, Tail Lamp Unit Ass'y and Flasher Lamp Ass'y without bulbs.
4. The parts marked with " X " in your country column are exclusive for your country, therefore, you should place an order only those parts.

## CONTENTS

Fig. 1	Engine	1
Fig. 2	Frame • Rear Fender	3
Fig. 3	Front Fork • Front Fender	5
Fig. 4	Flywheel Magneto	9
Fig. 5	Head Lamp	11
Fig. 6	Tail Lamp	13
Fig. 7	Tail Lamp (England)	17
Fig. 8	Flasher Lamp	19
Fig. 9	Electrical	21

## NUMERICAL INDEX

Fig. 1 ENGINE

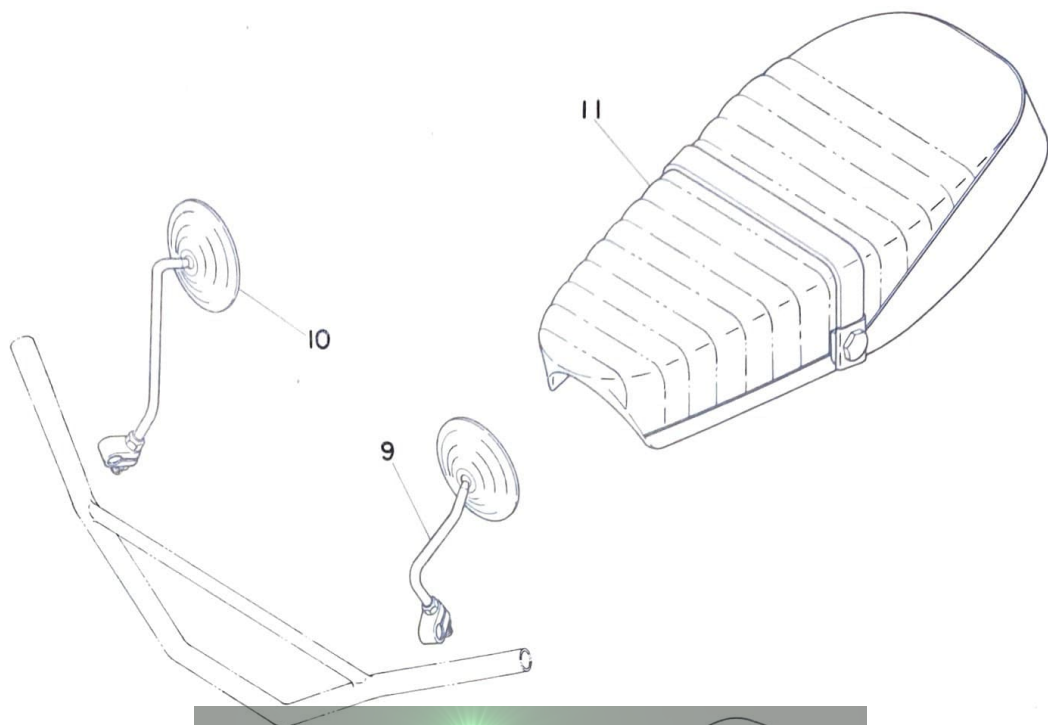


# ENGINE

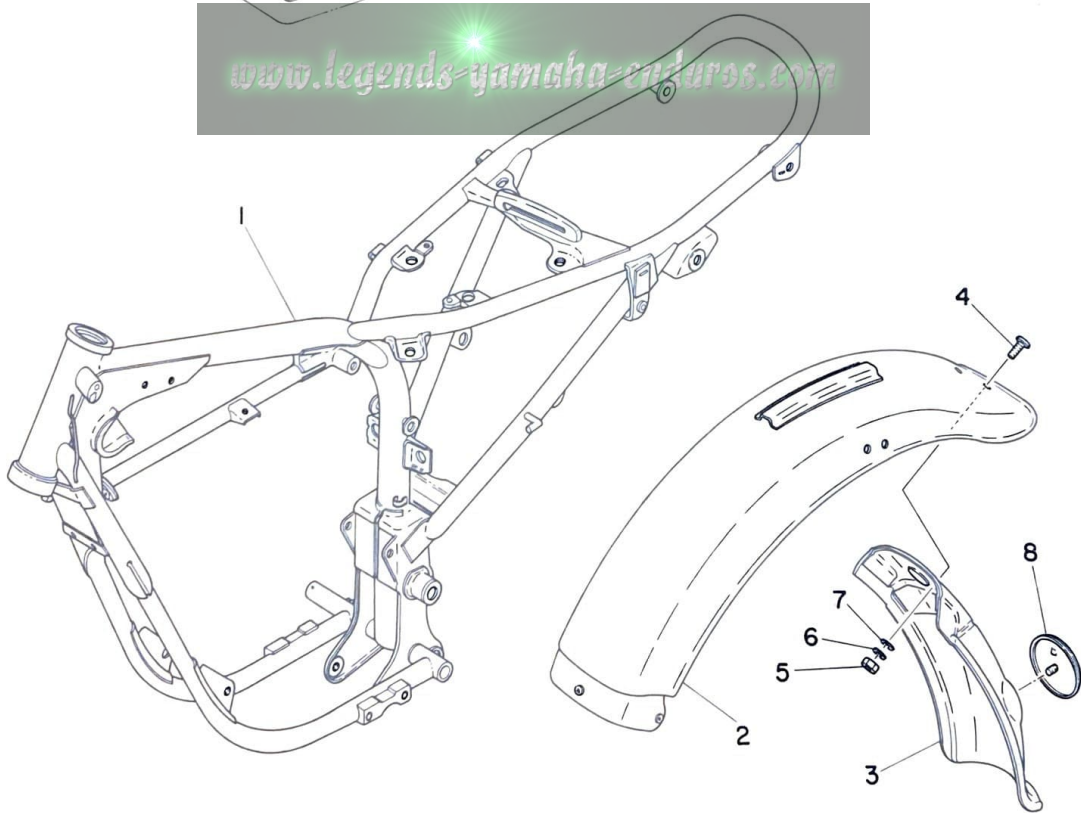
Ref. No.	Parts No.	Description	Q'ty	FRANCE	HOLLAND	W. GERMANY	SWITZERLAND	BELGIUM	SWEDEN	FINLAND	DENMARK	NORWAY	AUSTRIA	ENGLAND	Remarks
1- 1	392-14101-60	CARBURETOR ASS'Y .....	1				x	x	x	x	x			x	
1- 2	137-14143-30	. JET, main (#150) .....	1				x	x	x	x	x			x	
1- 3	392-14411-00	CASE, air cleaner .....	1				x	x	x	x	x			x	
1- 4	392-14412-00	CAP, cleaner case .....	1				x	x	x	x	x			x	
1- 5	392-14610-10	EXHAUST PIPE ASS'Y .....	1				x	x	x	x	x			x	
1- 6	392-14753-10	SILENCER .....	1				x	x	x	x	x			x	
1- 7	392-14651-00	STUD .....	2				x	x	x	x	x			x	
1- 8	98801-08200	NUT .....	2				x	x	x	x	x			x	
1- 9	92901-08100	WASHER, spring .....	2				x	x	x	x	x			x	

[www.legends-yamaha-enduros.com](http://www.legends-yamaha-enduros.com)

Fig. 2 FRAME · REAR FENDER



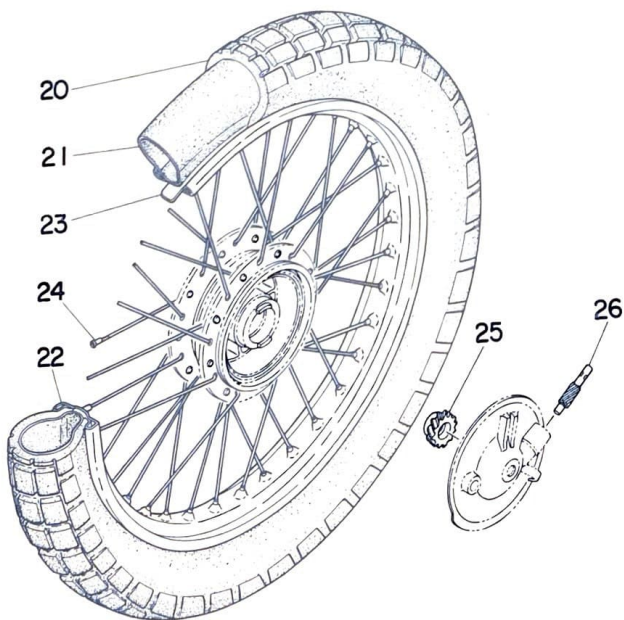
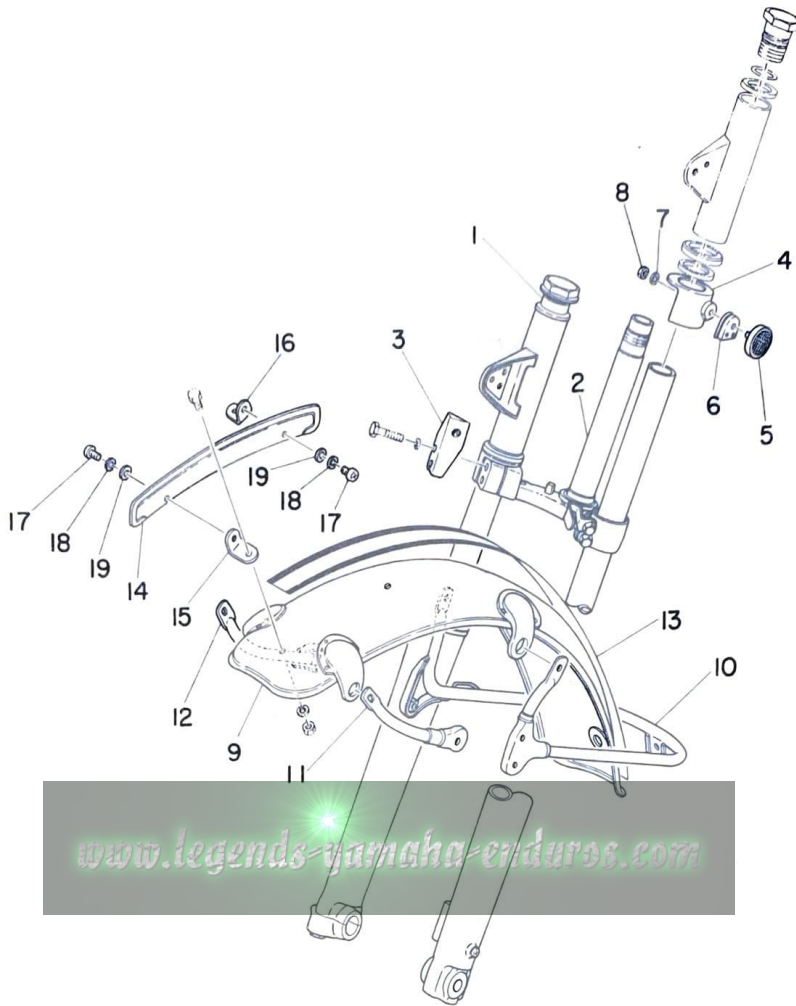
[www.legends-yamaha-enduros.com](http://www.legends-yamaha-enduros.com)



# FRAME · REAR FENDER

Ref. No.	Parts No.	Description	Q'ty	FRANCE	HOLLAND	W. GERMANY	SWITZERLAND	BELGIUM	SWEDEN	FINLAND	DENMARK	NORWAY	AUSTRIA	ENGLAND	Remarks
2- 1	316-21110-20-33	FRAME COMP. ....	1				x								
	316-21110-80-33	FRAME COMP. ....	1					x	x						
2- 2	314-21610-30-35	REAR FENDER COMP. ....	1											x	
	316-21610-40-35	REAR FENDER COMP. ....	1				x	x	x	x					
2- 3	316-21621-41	FLAP .....	1				x	x	x	x					
2- 4	92503-06018	SCREW, panhead .....	2				x	x	x	x					
2- 5	98801-06100	NUT .....	2				x	x	x	x					
2- 6	92901-06100	WASHER, spring .....	2				x	x	x	x					
2- 7	92901-06200	WASHER, plain .....	2				x	x	x	x					
2- 8	848-85131-01	REFLECTOR .....	1				x	x	x	x					
2- 9	407-26290-50	BACK MIRROR ASS'Y, left ...	1				x	x	x	x	x			x	
2-10	407-26290-60	BACK MIRROR ASS'Y, right ...	1				x	x	x	x	x			x	
2-11	316-24730-40	DOUBLE SEAT ASS'Y .....	1				x	x	x	x	x			x	

Fig. 3 FRONT FORK · FRONT FENDER

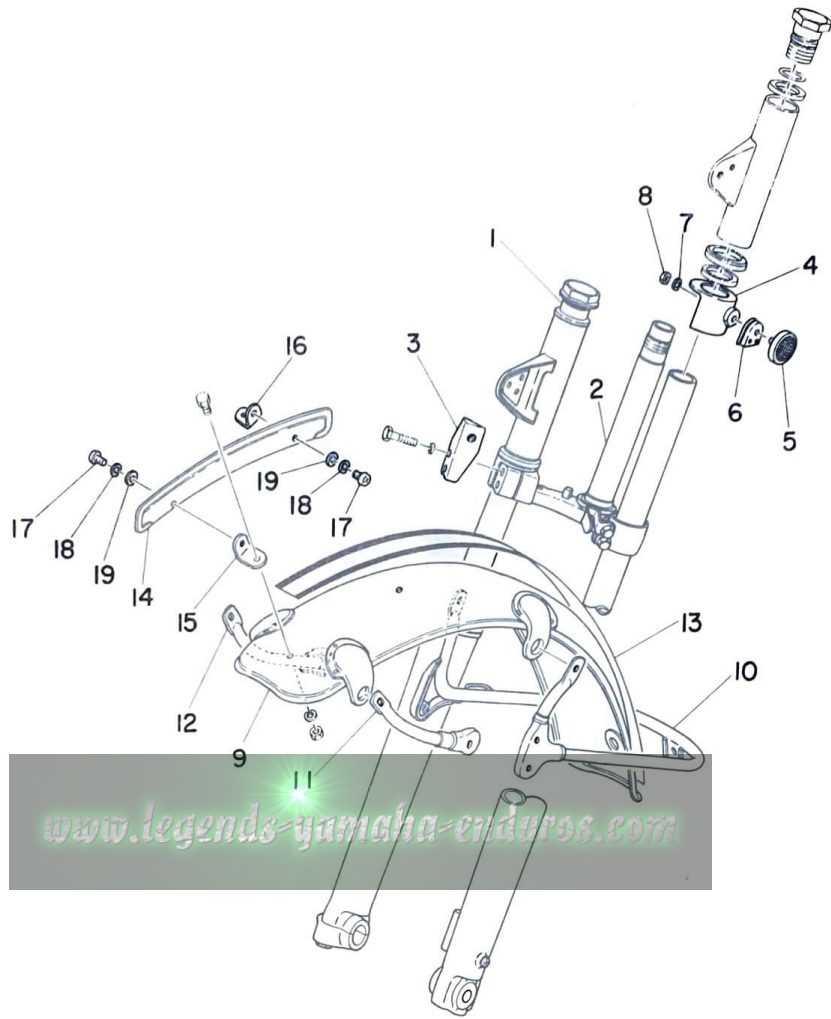


# FRONT FORK · FRONT FENDER

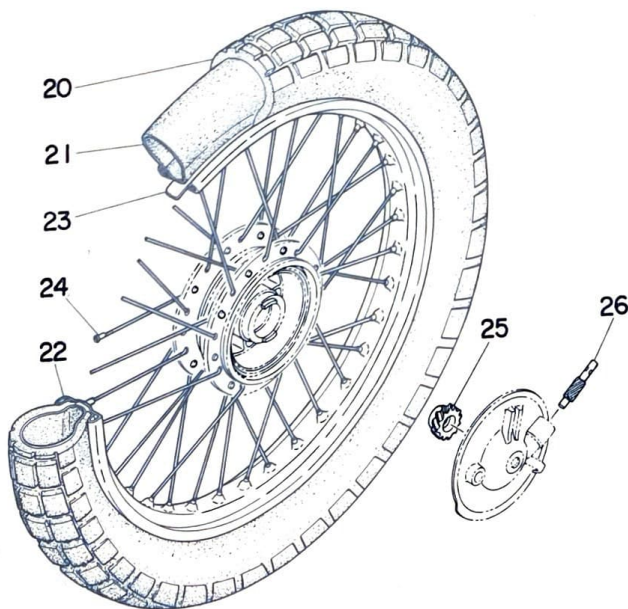
Ref. No.	Parts No.	Description	Q'ty	FRANCE	HOLLAND	W. GERMANY	SWITZERLAND	BELGIUM	SWEDEN	FINLAND	DENMARK	NORWAY	AUSTRIA	ENGLAND	Remarks
3- 1	316-23101-20	FRONT FORK ASS'Y	1											x	
	317-23101-30	FRONT FORK ASS'Y	1							x					
	317-23101-A0	FRONT FORK ASS'Y	1							x					
3- 2	316-23340-30-33	. UNDER BRACKET COMP. . .	1						x	x					
3- 3	316-21343-00	. BRACKET, horn	1							x					
3- 4	261-23122-61	. COVER, outer	2											x	
3- 5	256-85111-00	. REFLECTOR	2											x	
3- 6	256-23162-60	. COVER, reflector stay	2											x	
3- 7	92901-05100	. WASHER, spring	2											x	
3- 8	98801-05200	. NUT	2											x	
3- 9	308-21510-00-35	FRONT FENDER COMP. . .	1					x	x	x	x	x		x	
3-10	308-21512-00-93	BRACKET, fender	1					x	x	x	x	x		x	
3-11	214-21513-00	STAY, fender left	1					x	x	x	x	x		x	
3-12	214-21514-00	STAY, fender right	1					x	x	x	x	x		x	
3-13	308-21519-00	STRIPE, fender	1					x	x	x	x	x		x	
3-14	317-21582-80	PLATE, license	1											x	
3-15	314-21581-00	STAY, plate fitting 1	1											x	
3-16	314-21591-00	STAY, plate fitting 2	1											x	
3-17	92503-06010	SCREW, panhead	2											x	
3-18	92903-06100	WASHER, spring	2											x	
3-19	92903-06200	WASHER, plain	2											x	
3-20	94127-21112	TIRE (2.75-21-4PR)	1					x	x	x	x	x		x	
3-21	94227-21031	TUBE (2.75-21)	1					x	x	x	x	x		x	



Fig. 3 FRONT FORK · FRONT FENDER



[www.legends-yamaha-enduros.com](http://www.legends-yamaha-enduros.com)

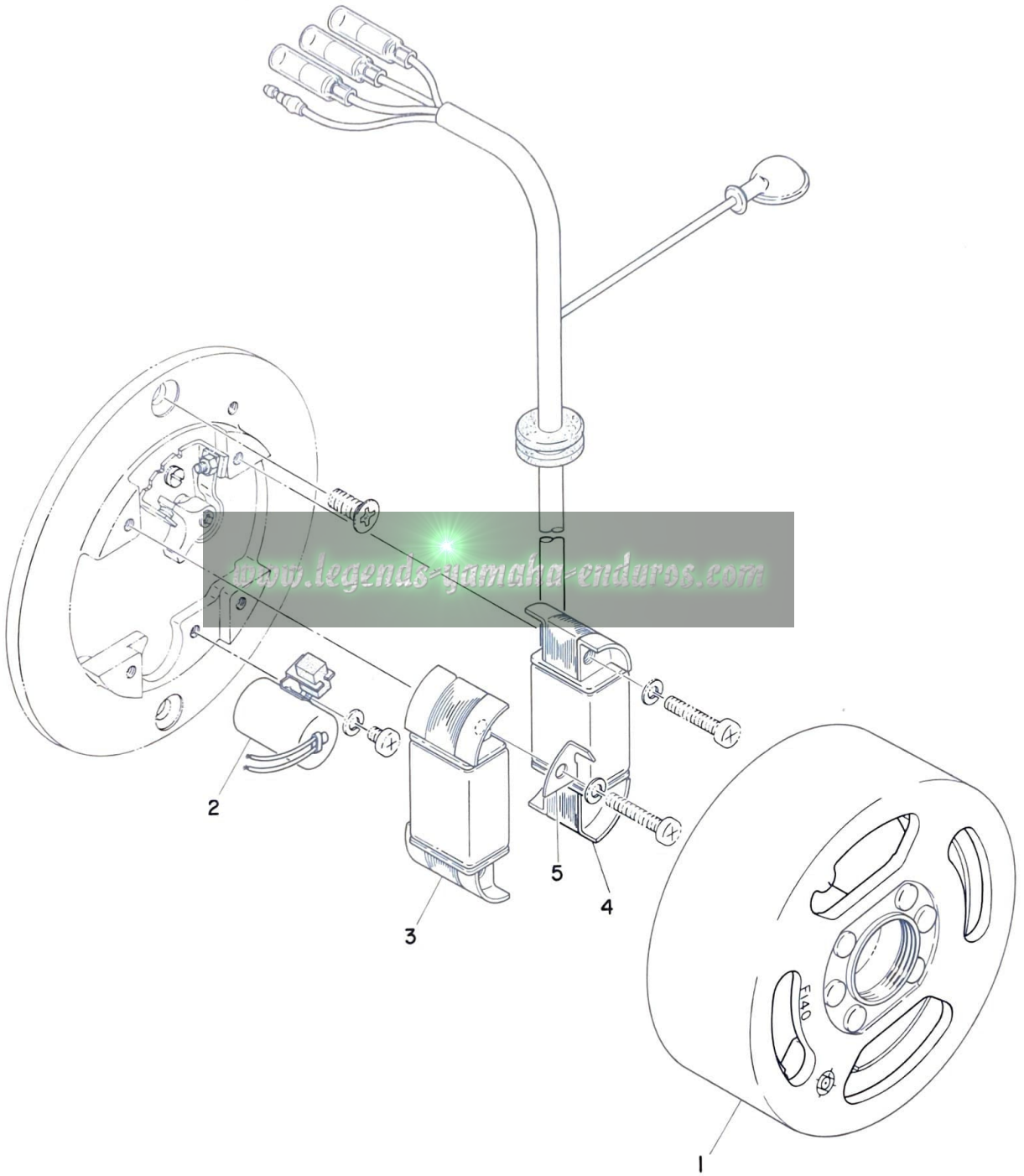


# FRONT FORK · FRONT FENDER

Ref. No.	Parts No.	Description	Q'ty	FRANCE	HOLLAND	W. GERMANY	SWITZERLAND	BELGIUM	SWEDEN	FINLAND	DENMARK	NORWAY	AUSTRIA	ENGLAND	Remarks
3-22	94416-21044	RIM (1.60A-21) . . . . .	1				x	x	x	x	x			x	
3-23	94327-21024	BAND, rim (2.75-21) . . . . .	1				x	x	x	x	x			x	
3-24	248-25104-10	SPOKE SET . . . . .	1				x	x	x	x	x			x	
3-25	248-25135-10	GEAR, drive . . . . .	1				x	x	x	x	x			x	
3-26	248-25138-10	GEAR, meter . . . . .	1				x	x	x	x	x			x	

[www.legends-yamaha-enduro.com](http://www.legends-yamaha-enduro.com)

Fig. 4 FLYWHEEL MAGNETO

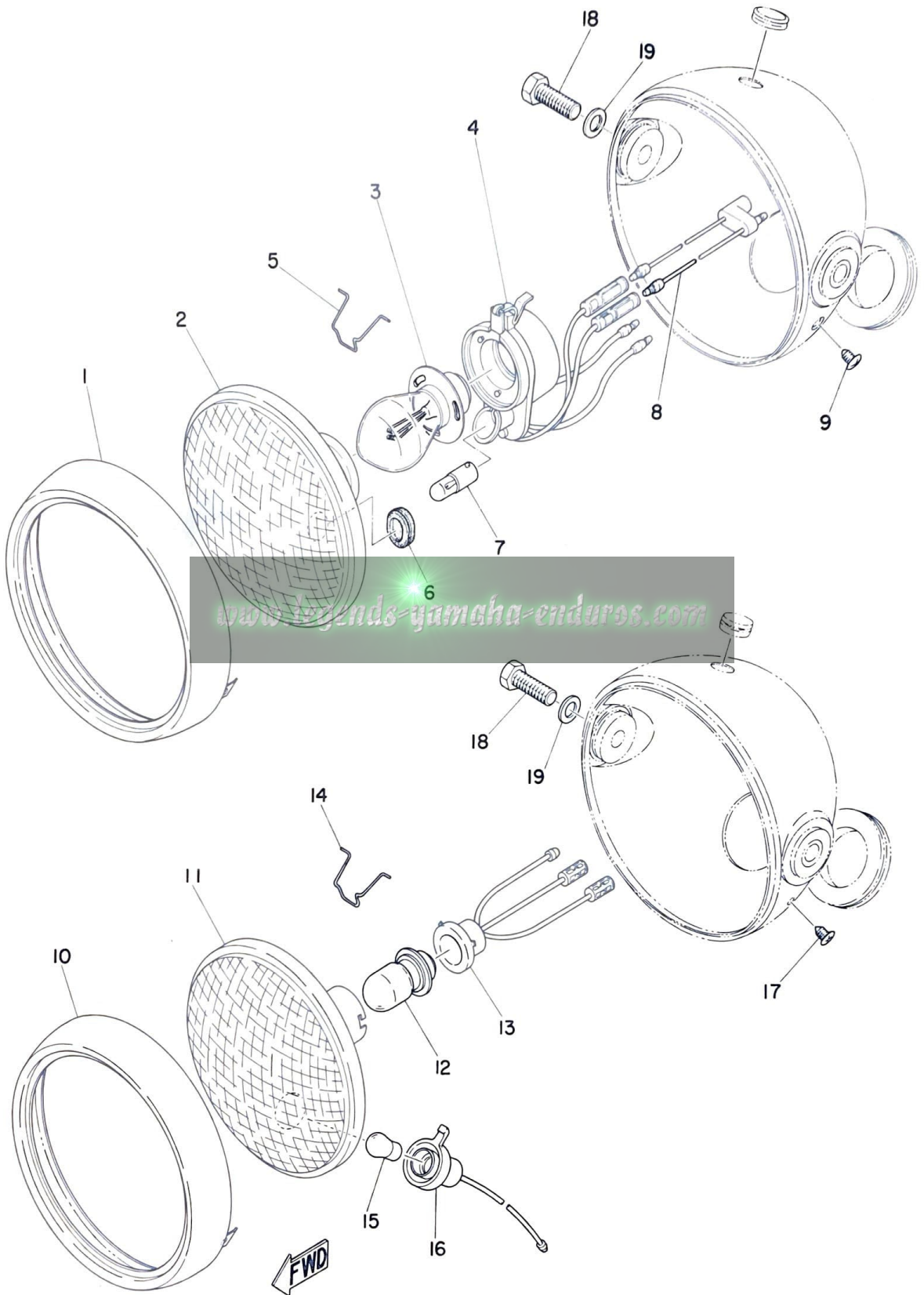


# FLYWHEEL MAGNETO

Ref. No.	Parts No.	Description	Q'ty	FRANCE	HOLLAND	W. GERMANY	SWITZERLAND	BELGIUM	SWEDEN	FINLAND	DENMARK	NORWAY	AUSTRIA	ENGLAND	Remarks
4- 0-1	317-81300-10	FLYWHEEL MAGNETO ASS'Y	1					x						x	
4- 1	317-81350-10	. ROTOR ASS'Y	1					x						x	
4- 2	207-81326-10	. CONDENSER	1					x						x	
4- 3	317-81312-10	. COIL, source	1					x						x	
4- 4	317-81313-10	. LIGHTING COIL ASS'Y	1					x						x	
4- 5	296-81332-10	. PLATE, timing	1					x						x	

[www.legends-yamaha-enduros.com](http://www.legends-yamaha-enduros.com)

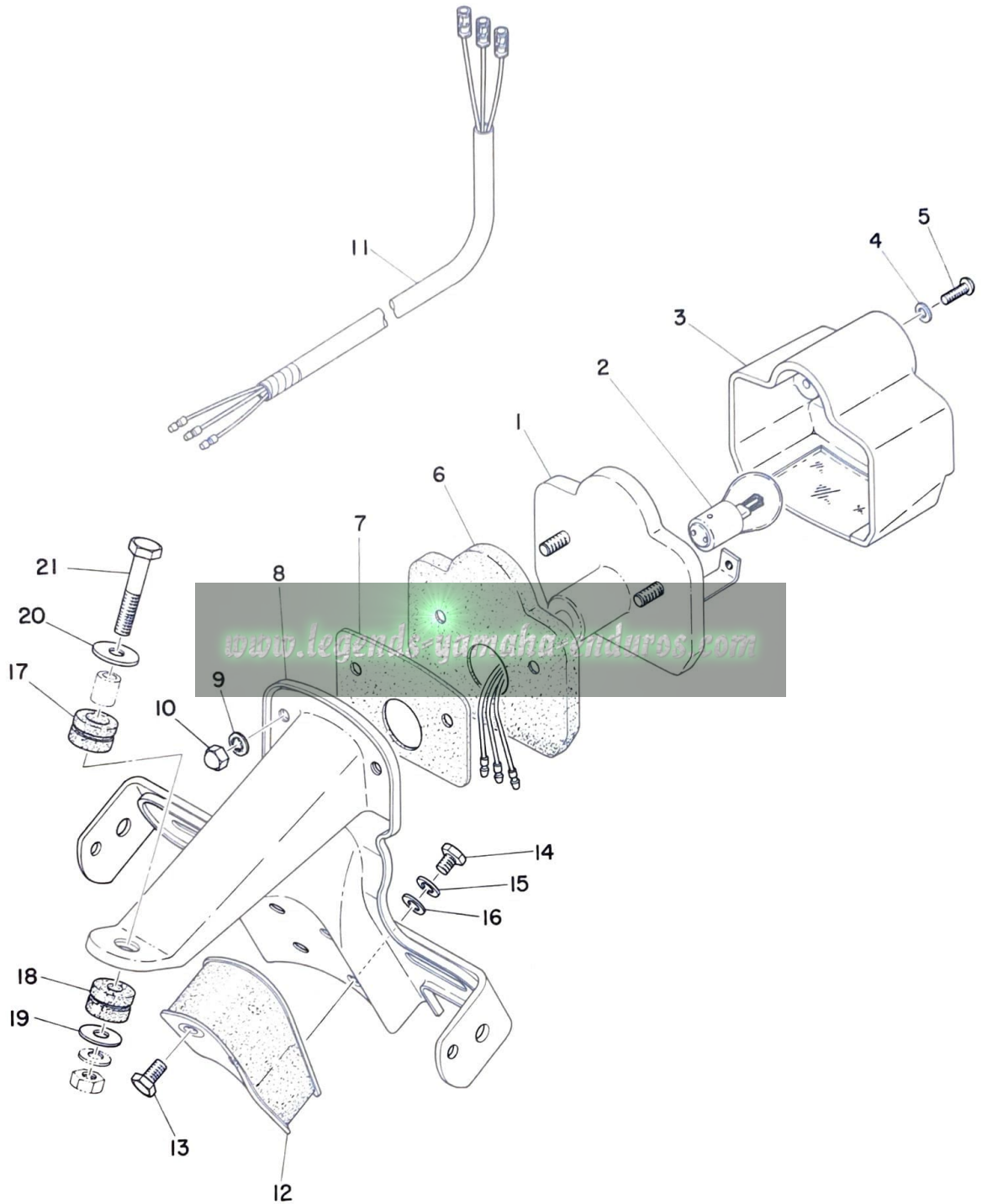
Fig. 5 HEAD LAMP



# HEAD LAMP

Ref. No.	Parts No.	Description	Q'ty	FRANCE	HOLLAND	W. GERMANY	SWITZERLAND	BELGIUM	SWEDEN	FINLAND	DENMARK	NORWAY	AUSTRIA	ENGLAND	Remarks
5- 0-1	317-84103-40	HEAD LAMP UNIT ASS'Y ...	1				x		x	x	x				
	317-84103-90	HEAD LAMP UNIT ASS'Y ...	1					x							
5- 1	248-84115-00	. RIM, head lamp .....	1				x	x	x	x	x				
5- 2	260-84120-40	. LENS ASS'Y .....	1				x	x	x	x	x				
5- 3	260-84114-40	. BULB, head lamp (6V 25/25W)1					x	x	x	x	x				*
5- 4	317-84112-40	. SOCKET .....	1				x		x	x	x				
	260-84112-40	. SOCKET .....	1					x							
5- 5	195-84324-00	. SPRING, reflector set ....	3				x	x	x	x	x				
5- 6	317-84153-40	. GROMMET .....	1				x		x	x	x				
5- 7	260-84147-40	. BULB, pilot .....	1					x							*
5- 8	248-84159-00	. CORD, head lamp .....	1				x		x	x	x				
5- 9	195-84325-00	SCREW, rim fitting .....	1				x	x	x	x	x				
5- 0-2	317-84110-30	HEAD LAMP UNIT ASS'Y ...	1											x	
5-10	248-84115-00	. RIM, head lamp .....	1											x	
5-11	317-84120-30	. LENS ASS'Y .....	1											x	
5-12	206-84114-60	. BULB, head lamp (6V 25/25W)1												x	
5-13	317-84312-30	. SOCKET .....	1											x	
5-14	195-84324-00	. SPRING, reflector set ...	3											x	
5-15	317-84147-30	. BULB, pilot (6V 3W) ....	1											x	
5-16	254-84346-00	. SOCKET, pilot .....	1											x	
5-17	195-84325-00	SCREW, rim fitting .....	1											x	
5-18	97203-08025	BOLT .....	2				x	x	x	x	x			x	
5-19	92903-08200	WASHER, plain .....	2				x	x	x	x	x			x	

Fig. 6 TAIL LAMP

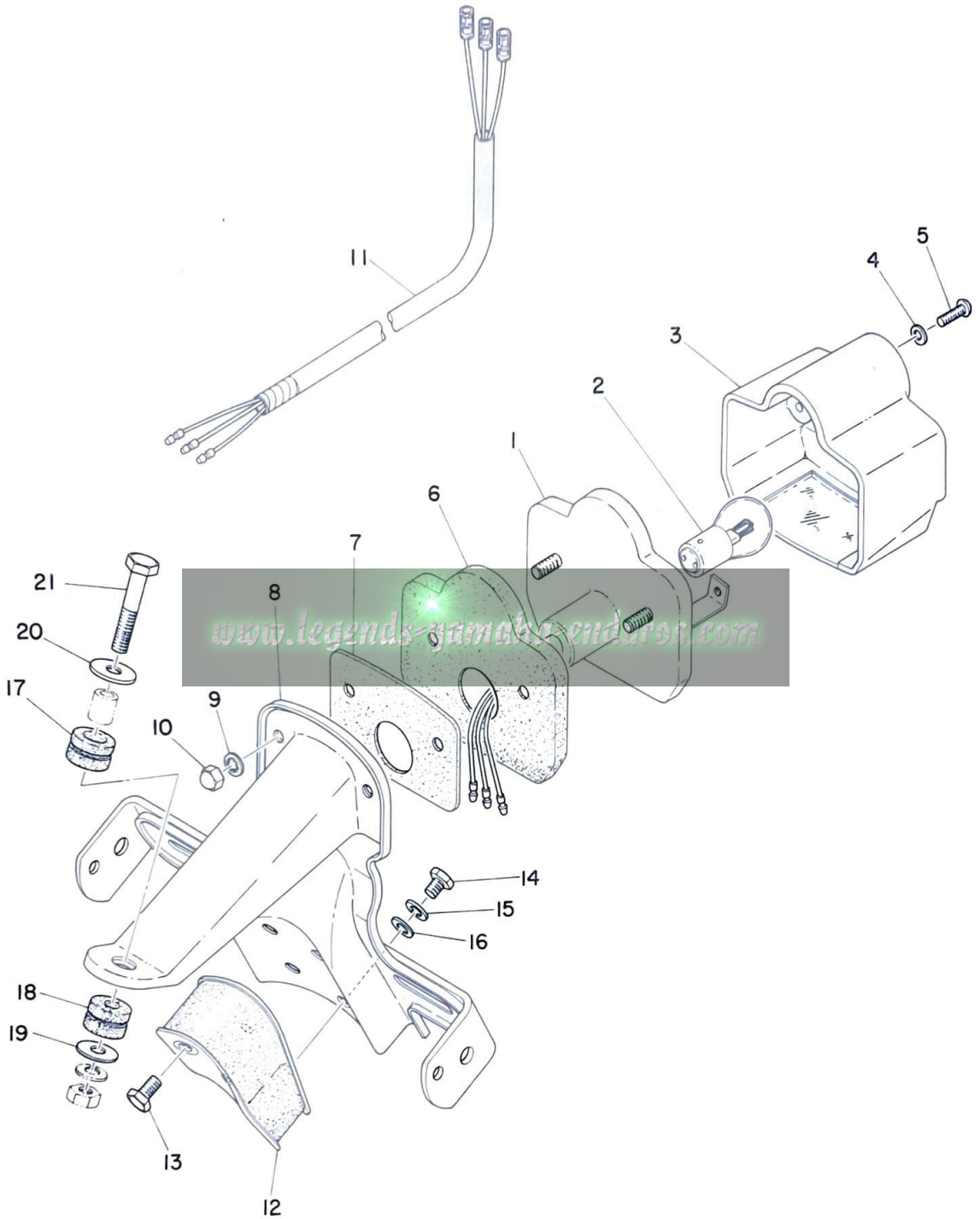


# TAIL LAMP

Ref. No.	Parts No.	Description	Q'ty	FRANCE	HOLLAND	SWITZERLAND	BELGIUM	SWEDEN	FINLAND	DENMARK	NORWAY	AUSTRIA	ENGLAND	Remarks
				W. GERMANY										
6- 0-1	308-84510-40	TAIL LAMP NUIT ASS'Y . . . .	1					x	x	x				
	308-84510-70	TAIL LAMP UNIT ASS'Y . . . .	1			x								
6- 1	207-84511-41	. BASE, tail lamp . . . . .	1					x	x	x				
	308-84511-71	. BASE, tail lamp . . . . .	1			x								
6- 2	308-84514-40	. BULB, tail lamp (6V-18/5W)	1					x	x	x				*
	260-84514-40	. BULB, tail lamp (6V-21/5W)	1			x								*
6- 3	308-84521-40	. LENS, tail lamp . . . . .	1					x	x	x				
	308-84521-70	. LENS, tail lamp . . . . .	1			x								
6- 4	124-84522-60	. WASHER, lens fitting . . . .	2			x		x	x	x				
6- 5	98503-04016	. SCREW, panhead . . . . .	2			x		x	x	x				
6- 6	124-84516-60	. COVER, tail lamp . . . . .	1			x		x	x	x				
6- 7	308-84547-40	DAMPER . . . . .	1			x		x	x	x				
6- 8	308-84551-40-35	BRACKET, license . . . . .	1			x		x	x	x				
6- 9	92903-06300	WASHER, tooth . . . . .	2			x		x	x	x				
6-10	92803-06700	NUT, crown . . . . .	2			x		x	x	x				
6-11	316-84717-40	CORD, tail lamp . . . . .	1			x		x	x	x				
6-12	308-84553-41	DAMPER . . . . .	1			x		x	x	x				
6-13	91201-06018	BOLT . . . . .	2			x		x	x	x				
6-14	91201-06010	BOLT . . . . .	2			x		x	x	x				
6-15	92901-06100	WASHER, spring . . . . .	3			x		x	x	x				
6-16	92901-06200	WASHER, plain . . . . .	2			x		x	x	x				
6-17	214-21717-00	DAMPER, battery box . . . .	1			x		x	x	x				
6-18	275-84559-00	DAMPER . . . . .	1			x		x	x	x				
6-19	116-28324-00	WASHER, leg shield . . . . .	1			x		x	x	x				



Fig. 6 TAIL LAMP

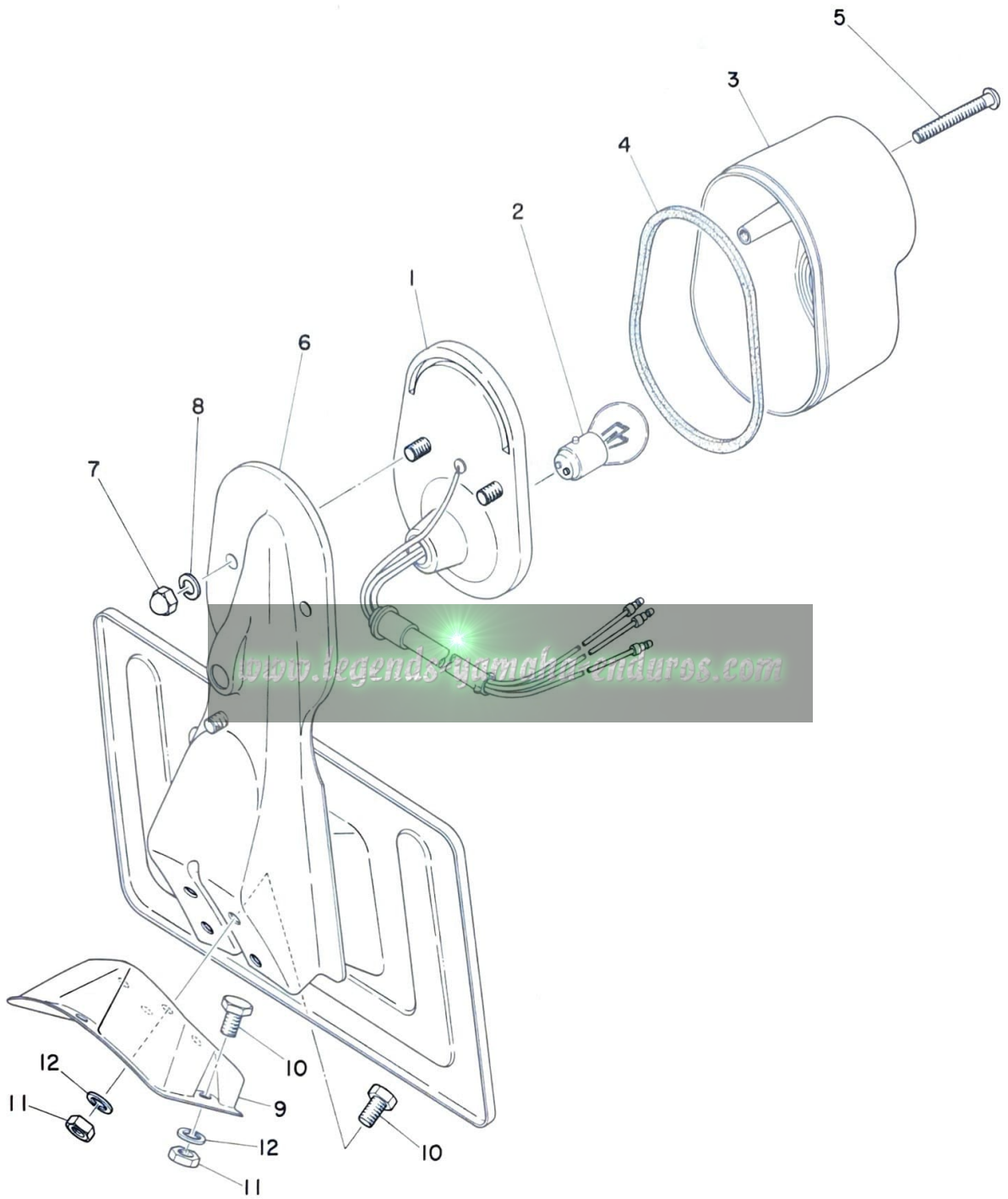


# TAIL LAMP

Ref. No.	Parts No.	Description	Q'ty	FRANCE	HOLLAND	W. GERMANY	SWITZERLAND	BELGIUM	SWEDEN	FINLAND	DENMARK	NORWAY	AUSTRIA	ENGLAND	Remarks
6-20	102-28323-00	WASHER, leg shield .....	1				x		x	x	x				
6-21	91203-06040	BOLT .....	1				x		x	x	x				

[www.legends-yamaha-enduros.com](http://www.legends-yamaha-enduros.com)

Fig.7 TAIL LAMP (ENGLAND)

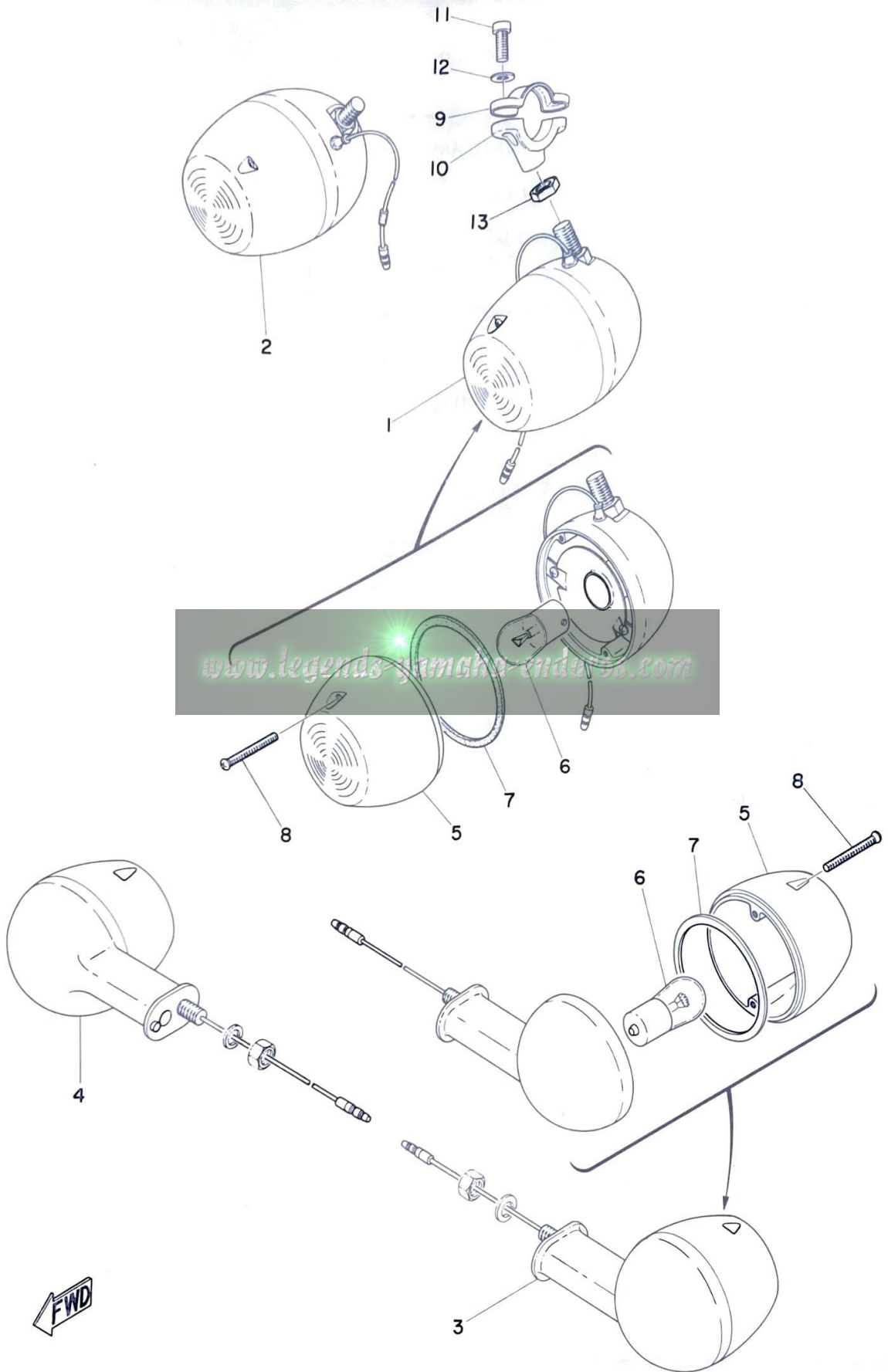


# TAIL LAMP (ENGLAND)

Ref. No.	Parts No.	Description	Q'ty	FRANCE	HOLLAND	W. GERMANY	SWITZERLAND	BELGIUM	SWEDEN	FINLAND	DENMARK	NORWAY	AUSTRIA	ENGLAND	Remarks
7- 0-1	317-84510-30	TAIL LAMP UNIT ASS'Y	... 1											x	
7- 1	317-84511-30	. BASE, tail lamp	..... 1											x	
7- 2	122-84514-30	. BULB, tail lamp (6V-17/5.3W)	..... 1											x	
7- 3	127-84521-31	. LENS, tail lamp	..... 1											x	
7- 4	122-84523-30	. GASKET, tail lens	..... 1											x	
7- 5	127-84524-30	. SCREW, lens fitting	..... 2											x	
7- 6	168-84751-30-35	BRACKET, license	..... 1											x	
7- 7	92803-06700	NUT, crown	..... 2											x	
7- 8	92901-06100	WASHER, spring	..... 2											x	
7- 9	317-84558-30	STAY, license bracket	.... 1											x	
7-10	91201-06012	BOLT	..... 8											x	
7-11	98801-06100	NUT	..... 6											x	
7-12	92901-06100	WASHER, spring	..... 6											x	

www.legends-yamaha-enduro.com

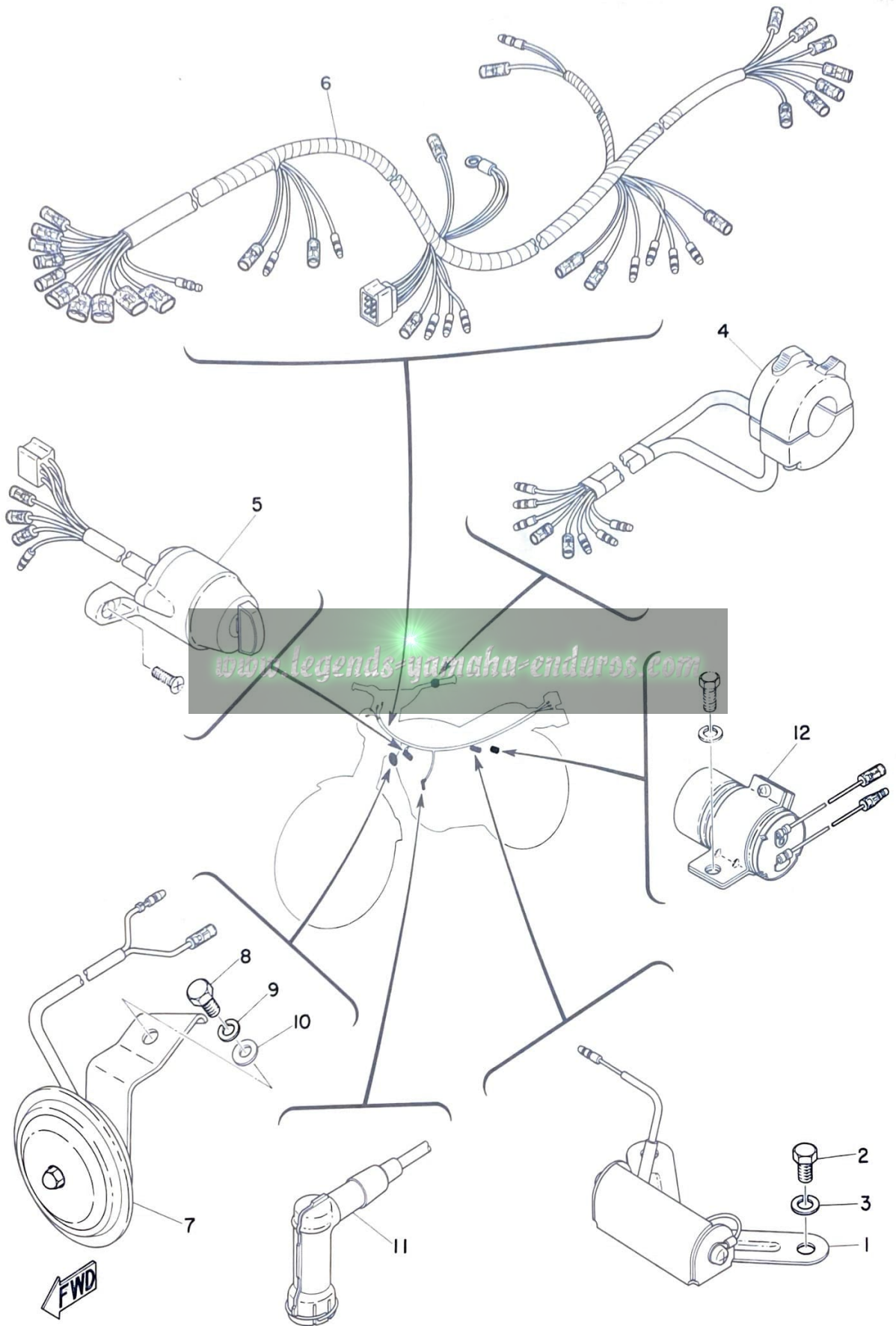
Fig. 8 FLASHER LAMP



# FLASHER LAMP

Ref. No.	Parts No.	Description	Q'ty	FRANCE	HOLLAND	W. GERMANY	SWITZERLAND	BELGIUM	SWEDEN	FINLAND	DENMARK	NORWAY	AUSTRIA	ENGLAND	Remarks
8- 1	308-83310-40-93	FRONT FLASHER LAMP ASS'Y left .....	1				x	x	x	x					
8- 2	308-83320-40-93	FRONT FLASHER LAMP ASS'Y right .....	1				x	x	x	x					
8- 3	308-83330-40-93	REAR FLASHER LAMP ASS'Y left .....	1				x	x	x	x					
	317-83330-50-93	REAR FLASHER LAMP ASS'Y left .....	1					x						x	
8- 4	308-83340-40-93	REAR FLASHER LAMP ASS'Y right .....	1				x	x	x	x					
	317-83340-50-93	REAR FLASHER LAMP ASS'Y right .....	1					x						x	
8- 5	183-83312-70	. LENS, flasher .....	4				x	x	x	x					
8- 6	308-83311-30	. BULB, flasher (6V-21W) ...	4				x	x	x	x					*
8- 7	183-83313-70	. GASKET, flasher lens ....	4				x	x	x	x					
8- 8	183-83333-71	. SCREW, lens fitting .....	8				x	x	x	x					
8- 9	275-83318-00	STAY, flasher 1 .....	2				x	x	x	x	x			x	
8-10	275-83328-00	STAY, flasher 2 .....	2				x	x	x	x	x			x	
8-11	92503-06015	SCREW, panhead .....	4				x	x	x	x	x			x	
8-12	92901-06300	WASHER, tooth .....	4				x	x	x	x	x			x	
8-13	98803-08100	NUT .....	2				x	x	x	x	x			x	

Fig. 9 ELECTRICAL



# ELECTRICAL

Ref. No.	Parts No.	Description	Q'ty	FRANCE	HOLLAND	W. GERMANY	SWITZERLAND	BELGIUM	SWEDEN	FINLAND	DENMARK	NORWAY	AUSTRIA	ENGLAND	Remarks
9- 1	317-85370-00	RESISTOR ASS'Y .....	1					x						x	
9- 2	97201-08010	BOLT .....	2					x						x	
9- 3	92901-08100	WASHER, spring .....	2					x						x	
9- 4	317-83972-00	SWITCH, handle 4 .....	1					x						x	
9- 5	308-82508-80	MAIN SWITCH ASS'Y ....	1					x						x	
9- 6	317-82590-80	WIRE HARNESS ASS'Y ...	1					x						x	
9- 7	317-83371-40	HORN .....	1						x						
9- 8	97101-08018	BOLT .....	1						x						
9- 9	92901-08100	WASHER, spring .....	1						x						
9-10	92901-08200	WASHER, plain .....	1						x						
9-11	808-82370-10	PLUG CAP ASS'Y .....	1			x	x	x	x	x	x			x	
9-12	317-83350-30	FLASHER RELAY ASS'Y ...	1			x	x	x	x	x					



# NUMERICAL INDEX

Ref No.	Parts No.	Ref No.	Parts No.	Ref No.	Parts No.
6-20	102-28323-00	8- 9	275-83318-00	4- 3	317-81312-10
6-19	116-28324-00	8-10	275-83328-00	4- 4	317-81313-10
7- 2	122-84514-30	6-18	275-84559-00	4- 1	317-81350-10
7- 4	122-84523-30	4- 5	296-81332-10	9- 6	317-82590-80
6- 6	124-84516-60	3- 9	308-21510-00-35	8- 3	317-83330-50-93
6- 4	124-84522-60	3-10	308-21512-00-93	8- 4	317-83340-50-93
7- 3	127-84521-31	3-13	308-21519-00	9-12	317-83350-30
7- 5	127-84524-30	9- 5	308-82508-80	9- 7	317-83371-40
1- 2	137-14143-30	8- 1	308-83310-40-93	9- 4	317-83972-00
7- 6	168-84751-30-35	8- 6	308-83311-30	5- 0-1	317-84103-40
8- 5	183-83312-70	8- 2	308-83320-40-93	5- 0-1	317-84103-90
8- 7	183-83313-70	8- 3	308-83330-40-93	5- 0-2	317-84110-30
8- 8	183-83333-71	8- 4	308-83340-40-93	5- 4	317-84112-40
5- 5	195-84324-00	6- 0-1	308-84510-40	5-11	317-84120-30
5-14	195-84324-00	6- 0-1	308-84510-70	5-15	317-84147-30
5- 9	195-84325-00	6- 1	308-84511-71	5- 6	317-84153-40
5-17	195-84325-00	6- 2	308-84514-40	5-13	317-84312-30
5-12	206-84114-60	6- 3	308-84521-40	7- 0-1	317-84510-30
6- 1	207-84511-41	6- 3	308-84521-70	7- 1	317-84511-30
4- 2	207-81326-10	6- 7	308-84547-40	7- 9	317-84558-30
3-11	214-21513-00	6- 8	308-84551-40-35	9- 1	317-85370-00
3-12	214-21514-00	6-12	308-84553-41	1- 1	392-14101-60
6-17	214-21717-00	3-15	314-21581-00	1- 3	392-14411-00
3-24	248-25104-10	3-16	314-21591-00	1- 4	392-14412-00
3-25	248-25135-10	2- 2	314-21610-30-35	1- 5	392-14610-10
3-26	248-25138-10	2- 1	316-21110-20-33	1- 9	392-14651-00
5- 1	248-84115-00	2- 1	316-21110-80-33	1- 6	392-14753-10
5-10	248-84115-00	3- 3	316-21343-00	2- 9	407-26290-50
5- 8	248-84159-00	2- 2	316-21610-40-35	2-10	407-26290-60
5-16	254-84346-00	2- 3	316-21621-41	9-11	808-82370-10
3- 6	256-23162-60	3- 1	316-23101-20	2- 8	848-85131-01
3- 5	256-85111-00	3- 2	316-23340-30-33	6-14	91201-06010
5- 4	260-84112-40	2-11	316-24730-40	7-10	91201-06012
5- 3	260-84114-40	6-11	316-84717-40	6-13	91201-06018
5- 2	260-84120-40	3-14	317-21582-80	6-21	91203-06040
5- 7	260-84147-40	3- 1	317-23101-30	3-17	92503-06010
6- 2	260-84514-40	3- 1	317-23101-A0	8-11	92503-06015
3- 4	261-23122-61	4- 0-1	317-81300-10	2- 4	92503-06018

# NUMERICAL INDEX

Ref No.	Parts No.	Ref No.	Parts No.
6-10	92803-06700		
7- 7	92803-06700		
3- 7	92901-05100		
2- 6	92901-06100		
6-15	92901-06100		
7- 8	92901-06100		
7-12	92901-06100		
2- 7	92901-06200		
6-16	92901-06200		
8-12	92901-06300		
1- 9	92901-08100		
9- 3	92901-08100		
9- 9	92901-08100		
9-10	92901-08200		
3-18	92903-06100		
3-19	92903-06200		
6- 9	92903-06300		
5-19	92903-08200		
3-20	94127-21112		
3-21	94227-21031		
3-23	94327-21024		
3-22	94416-21044		
9- 8	97101-08018		
9- 2	97201-08010		
5-18	97203-08025		
6- 5	98503-04016		
3- 8	98801-05200		
2- 5	98801-06100		
7-11	98801-06100		
1- 8	98801-08200		
8-13	98803-08100		

www.legends-yamaha-enduros.com

[www.legends-yamaha-enduros.com](http://www.legends-yamaha-enduros.com)



**YAMAHA MOTOR CO., LTD.**

**PRINTED IN JAPAN**  
**First edition Dec., 1972**  
**(317-40)**