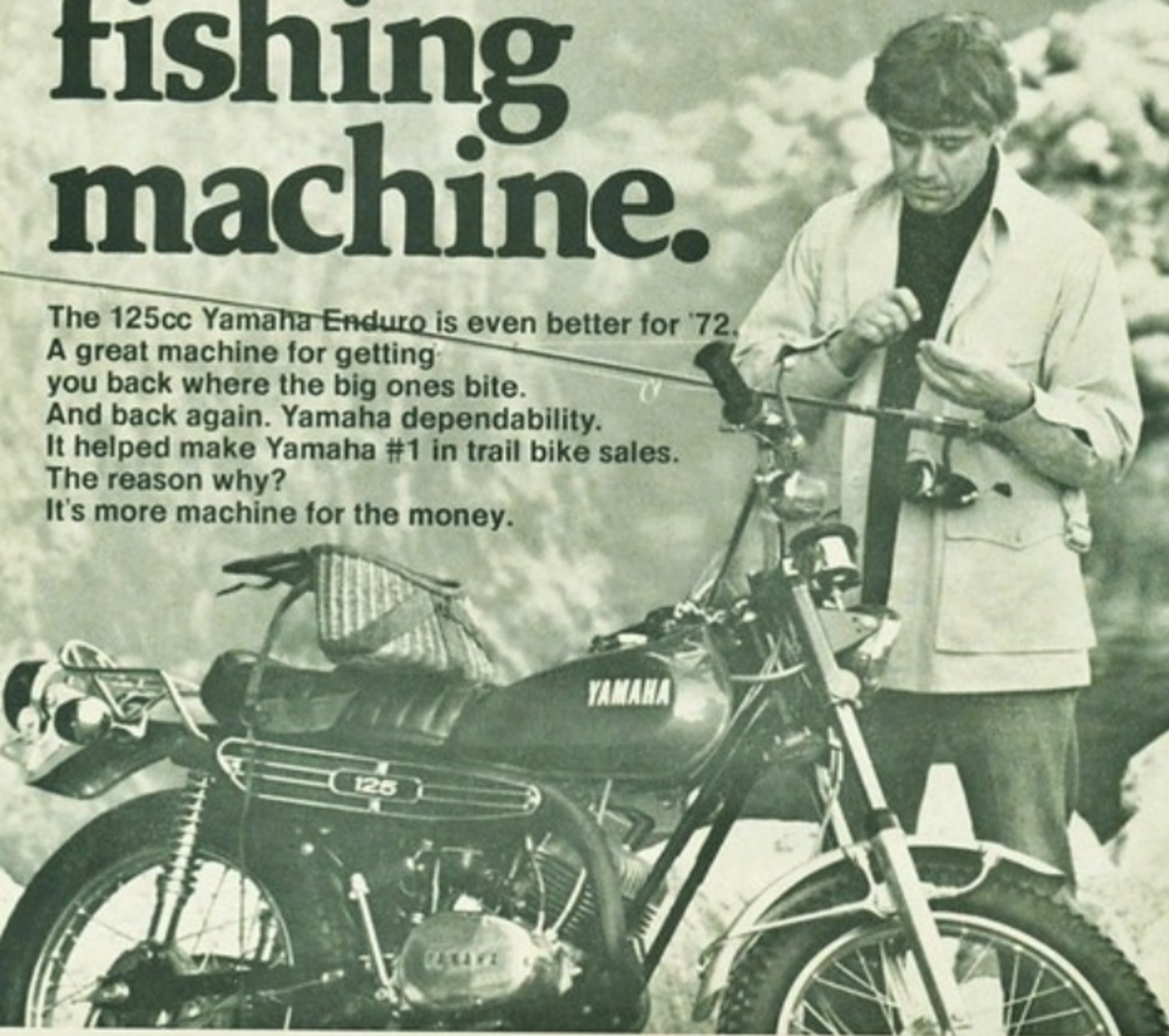



# The great fishing machine.

The 125cc Yamaha Enduro is even better for '72.  
A great machine for getting you back where the big ones bite.  
And back again. Yamaha dependability.  
It helped make Yamaha #1 in trail bike sales.  
The reason why?  
It's more machine for the money.



*Torque Induction* is one of the big improvements for '72 a fisherman can really appreciate in the Yamaha 125 Enduro AT2. It's a Yamaha performance exclusive that provides maximum power delivery under all operating conditions. Then there's the 7-port engine designed for greater efficiency and fuel economy. And Autolube that mixes oil and gas automatically. Extra-large dustproof/waterproof front and rear brakes for positive, dependable stopping action. Deep-tread tires for great traction. And a 5-speed, constant-mesh transmission... with enough power reserve for the roughest trails plus great range for traveling at highway speeds. If you're ready to get way back in where the big ones bite, get in to your Yamaha dealer first. Then take to the woods on the outdoors machine that has earned the right to be called "great."



**YAMAHA**  **The great machines for '72.**

YAMAHA Motor Company, Ltd., P.O. Box 6801, Buena Park, CA 90621