



# YAMAHA

## PARTS CATALOGUE

### AG175G (4M3)

OCEANIA

[www.legends-yamaha-enduros.com](http://www.legends-yamaha-enduros.com)

104M3-700E1

FOREWORD



[www.legends-yamaha-enduros.com](http://www.legends-yamaha-enduros.com)



A3

# FOREWORD

This Parts Catalogue is related to the parts in use for the Yamaha AG 175G (4M3). When you are ordering replacement parts for the AG 175G (4M3), refer to this Parts Catalogue and quote both part numbers and part names correctly.

1. Modifications or additions which have been made after issue of the Parts Catalogue will be announced in the Yamaha Parts News.  
It is advisable that according to the Yamaha Parts News you make necessary corrections to the Parts Catalogue on hand to keep it up-to-date.

## 2. Abbreviations

The following abbreviations are used in this Parts Catalogue.

- U.R. Use size (thickness) and/or number as required.
- U.N. Use as many as you need.
- A.P. Alternate Parts
- L.M. Local Made
- F# Frame No. (Applicable machine No.)

3. The parts marked with (+) in the parts number column of this Catalogue are not supplied with by Yamaha, those have to be found locally.
4. Parts, which are to be supplied in the form of assemblies, are listed with an indentation of one letter's space, and a dot ( . ) is put against the name of each part.

**EXAMPLE** CARBURETOR ASS'Y  
     . JET, pilot  
     . NOZZLE, main

## 5. Indication of No. of constituent parts for assembly

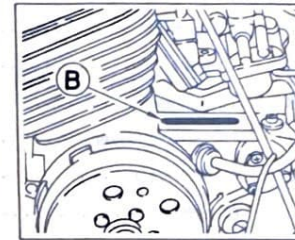
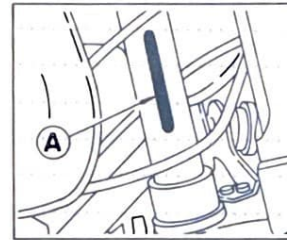
The numeral appearing to the right of each constituent part under the description indicates the quantity of such parts for each individual assembly unit.

**EXAMPLE**

Part No.	Description	Q'ty	Remarks
2F5-83310-60	FRONT FLASHER LIGHT ASS'Y	2	
115-83311-60	. BULB (6V-18W)	1	
1M1-83309-60	. REFLECTOR	1	

## 6. Initial Serial No. and Color Code

(A) Frame Serial No.	4M3-000101 and following
(B) Engine Serial No.	4M3-000101 and following



Color Code	Color Name	Abbreviate
26	Competition Yellow	CPY

7. Applicable colors of graphics are represented in the "Remarks" column by the letter(s) appropriately picked out of the full word(s) showing such colors.

**EXAMPLE**

Part No.	Description	Q'ty	Remarks
2N4-24110-00-X5	FUEL TANK COMP.	1	MAXIM RED
3J1-24240-10	. GRAPHIC, fuel tank set	1	for MXR

# CONTENTS

## ENGINE

Fig. 1	Cylinder Head · Cylinder	1
Fig. 2	Crankshaft · Piston	2
Fig. 3	C.D.I Magneto	3
Fig. 4	Oil Pump	4
Fig. 5	Intake	5
Fig. 6	Carburetor	6
Fig. 7	Exhaust	8
Fig. 8	Crankcase	9
Fig. 9	Crankcase Cover	10
Fig. 10	Kick Starter	11
Fig. 11	Clutch	12
Fig. 12	Transmission	14
Fig. 13	Shift Cam · Fork	16
Fig. 14	Shift Shaft · Pedal	17

Fig. 31	Headlight	38
Fig. 32	Taillight	39
Fig. 33	Electrical 1	40
Fig. 34	Handle Switch · Lever	42

## REPAIR KIT

Fig. 35	Repair Kit	43
---------	------------	----

## INDEX

- Numerical Index
- Parts Name Index

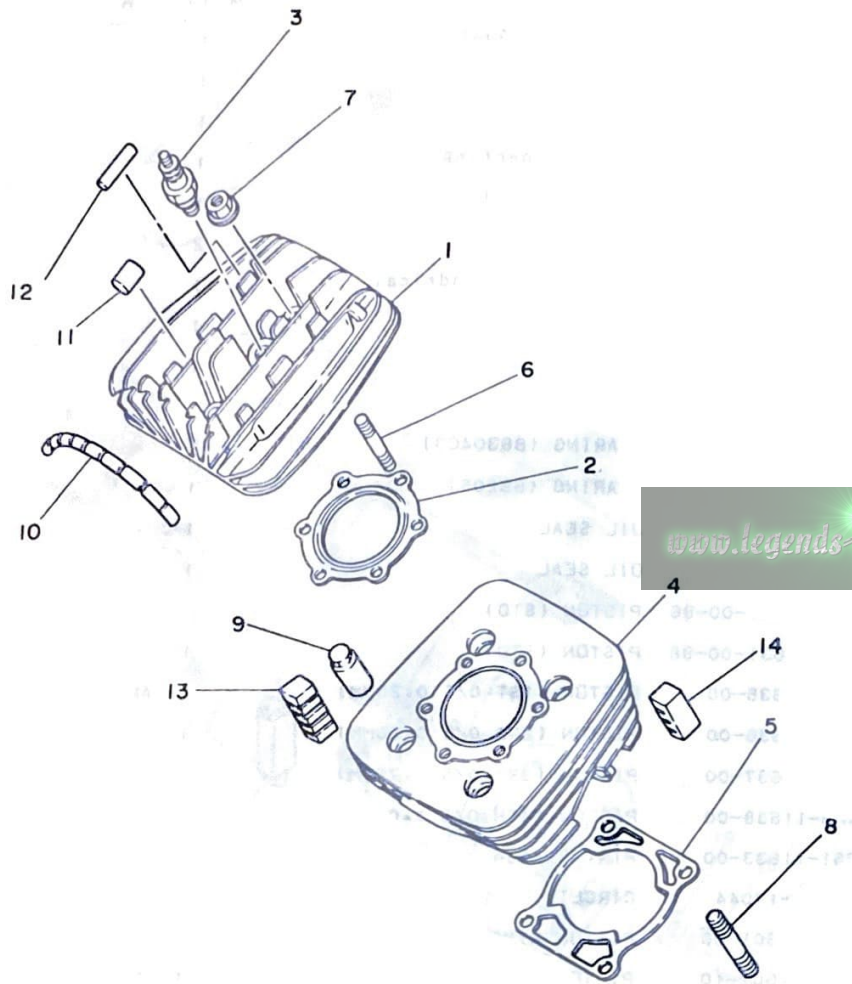
## CHASSIS

Fig. 15	Frame	18
Fig. 16	Front Fender · Rear Fender	19
Fig. 17	Side Cover	20
Fig. 18	Oil Tank	21
Fig. 19	Rear Arm	22
Fig. 20	Rear Suspension	24
Fig. 21	Steering	25
Fig. 22	Front Fork	26
Fig. 23	Fuel Tank	28
Fig. 24	Seat	29
Fig. 25	Front Wheel	30
Fig. 26	Rear Wheel	32
Fig. 27	Handlebar · Cable	34
Fig. 28	Stand · Footrest	35
Fig. 29	Flasher Light	36
Fig. 30	Meter	37

www.legend-yamaha-enduros.com

EX-11

FIG. 1 CYLINDER HEAD, CYLINDER



REF. NO.	PART NO.	DESCRIPTION	Q'TY	REMARKS
1	4M3-11111-00	HEAD, cylinder 1	1	
2	1W2-11181-10	GASKET, cylinder head 1	1	
3	94701-00043	PLUG, spark <i>B7ES</i>	1	
4	4M3-11311-00	CYLINDER 1	1	
5	3M5-11351-01	GASKET, cylinder	1	
6	90116-08104	BOLT, stud	6	
7	90179-08065	NUT	6	
8	95611-10630	BOLT, stud	4	
9	90179-10201	NUT	4	
10	2A6-11161-00	ABSORBER 1	1	
11	2A6-11162-00	ABSORBER 2	1	
12	579-11162-00	ABSORBER 2	2	
13	2A6-11127-00	ABSORBER 3	2	
14	2A6-11128-00	ABSORBER 4	2	

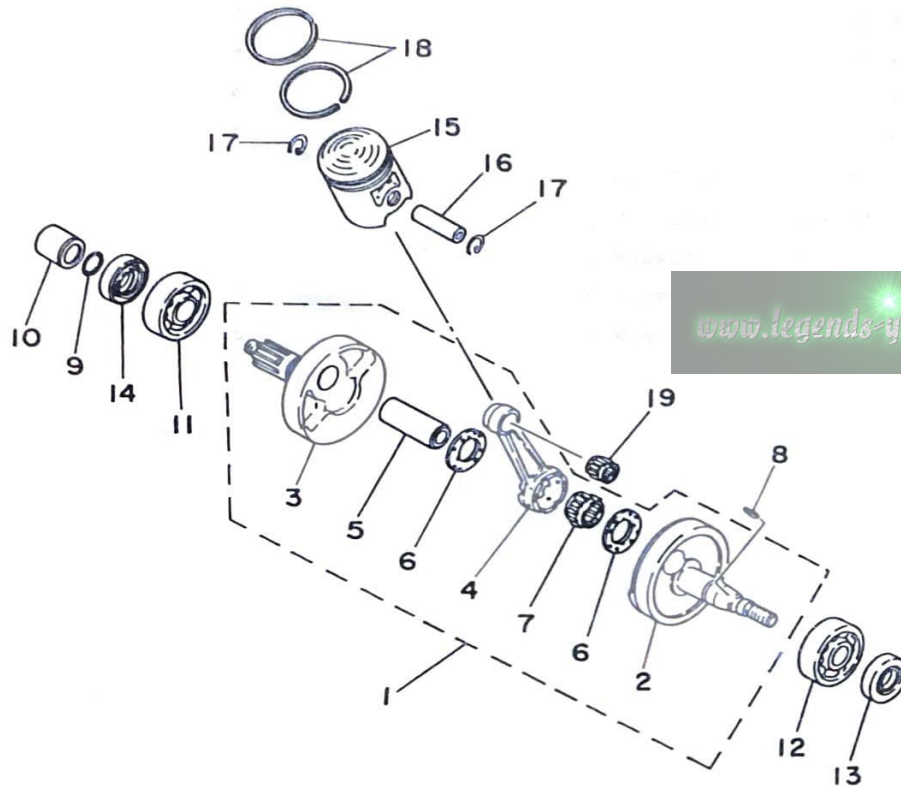


4M3700-0010

**B2**

FIG. 2 CRANKSHAFT-PISTON

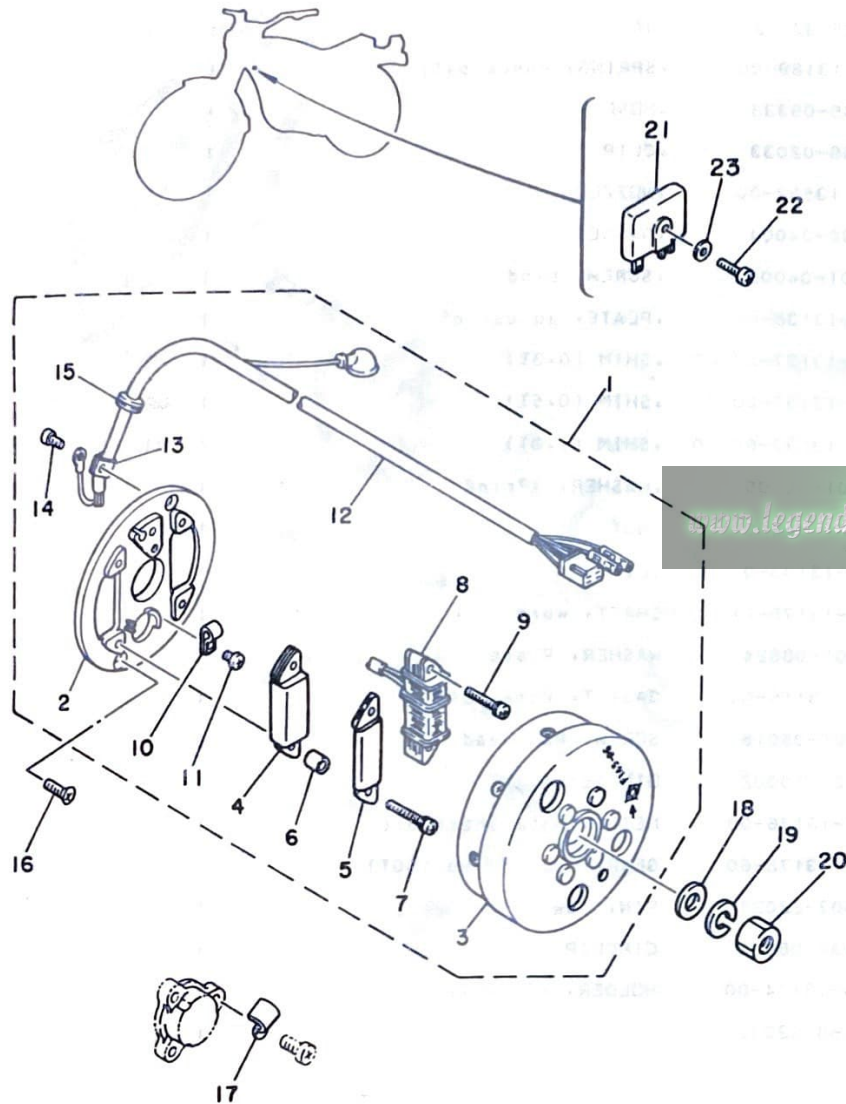
REF. NO.	PART NO.	DESCRIPTION	Q'TY	REMARKS
1	482-11400-00	CRANKSHAFT ASSY	1	
2	482-11412-00	•CRANK 1	1	
3	248-11422-00	•CRANK 2	1	
4	2N4-11651-00	•ROD, connecting	1	
5	248-11681-01	•PIN, crank 1	1	
6	90209-22071	•WASHER	2	
7	93310-42231	•BEARING, cylindrical	1	
8	90280-05013	KEY, woodruff	1	
9	93210-18023	O-RING	1	
10	90387-20170	COLLAR	1	
11	93306-30405	BEARING (B6304C3)	1	
12	93306-20517	BEARING (B6205)	1	
13	93102-25061	OIL SEAL	1	
14	93103-28011	OIL SEAL	1	
15	4M3-11631-00-96	PISTON (STD)	1	UR
	4M3-11631-00-98	PISTON (STD)	1	UR
	4M3-11635-00	PISTON (1ST O/S 0.25MM)	1	AP
	4M3-11636-00	PISTON (2ND O/S 0.50MM)	1	AP
	4M3-11637-00	PISTON (3RD O/S 0.75MM)	1	AP
	4M3-11638-00	PISTON (4TH O/S 1.00MM)	1	AP
16	251-11633-00	PIN, Piston	1	
17	93450-17044	CIRCLIP	2	
18	4M3-11601-00	PISTON RING SET (STD)	1	
	4M3-11601-10	PISTON RING SET (1ST O/S)	1	AP
	4M3-11601-20	PISTON RING SET (2ND O/S)	1	AP
	4M3-11601-30	PISTON RING SET (3RD O/S)	1	AP
	4M3-11601-40	PISTON RING SET (4TH O/S)	1	AP
19	93310-216E1	BEARING, cylindrical	1	



4M3700-0020

**B3**

FIG. 3 C.D.I MAGNETO



REF. NO.	PART NO.	DESCRIPTION	Q'TY	REMARKS
1	4M3-85500-10	C.D.I. MAGNETO ASSY	1	
2	4M3-81309-10	•BASE, magneto	1	
3	4M3-85550-10	•ROTOR ASSY	1	
4	482-85520-10	•COIL, charge	1	
5	8G9-85541-10	•COIL, charge	1	
6	647-81318-10	•SPACER	2	
7	482-81347-10	•SCREW, Pan head	2	
8	4M3-85533-10	•COIL, lighting	1	
9	482-81324-10	•SCREW 2	2	
10	482-81328-10	•CLAMP	1	
11	482-81323-10	•SCREW 1	1	
12	4M3-8131X-10	•CORD ASSY	1	
13	109-81328-11	•CLAMP	1	
14	482-81323-10	•SCREW 1	1	
15	90480-16110	•GROMMET	1	
16	92701-06015	SCREW, flat head	2	
17	90462-05012	CLAMP	1	
18	90201-12535	WASHER, Plate	1	
19	92901-12100	WASHER, sPrinG	1	
20	90170-12067	NUT	1	
21	353-81970-50	RECTIFIER ASSY	1	UR
	353-81970-63	RECTIFIER ASSY	1	UR
22	98501-05020	SCREW, Pan head	1	
23	92901-05600	WASHER, Plate	1	

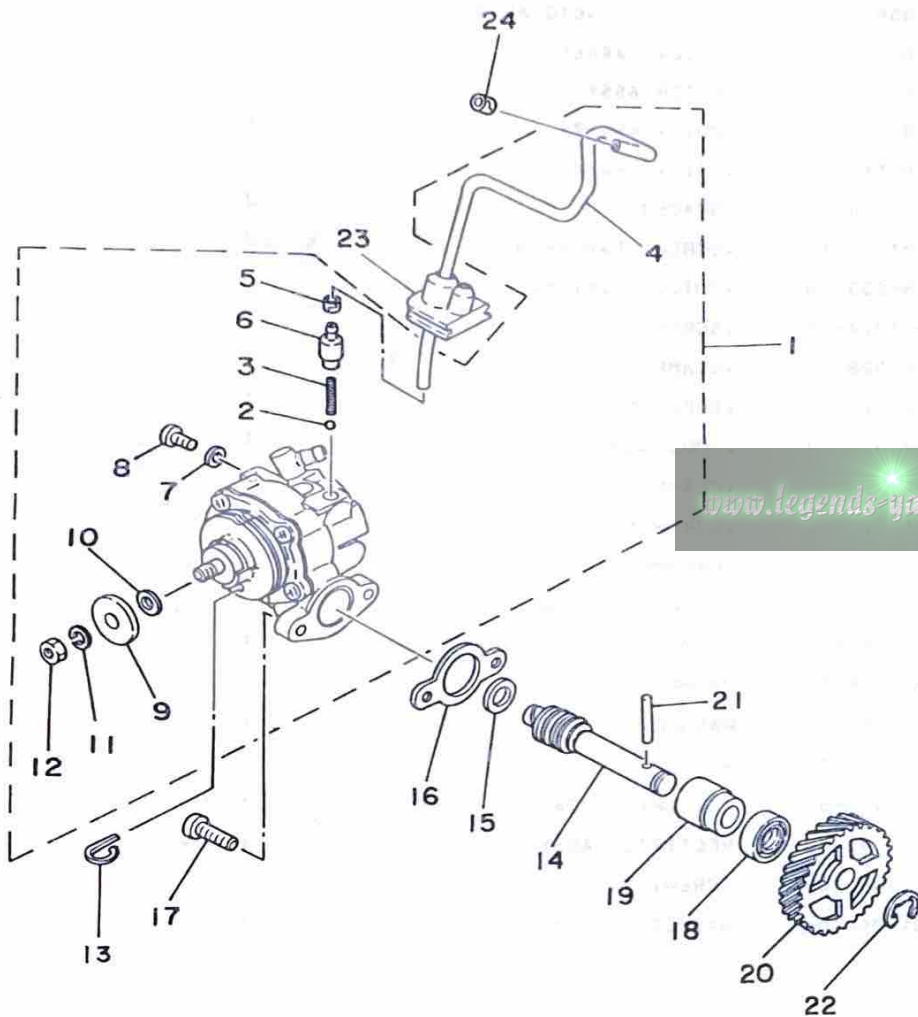


4M3700-0030

**B4**

FIG. 4 OIL PUMP

REF. NO.	PART NO.	DESCRIPTION	Q'TY	REMARKS
1	4M3-13101-00	OIL PUMP ASSY	1	
2	93505-32002	•BALL	1	
3	278-13169-00	•SPRING, check ball	1	
4	90445-05333	•HOSE	1	
5	90468-02033	•CLIP	1	
6	402-13552-00	•NOZZLE	1	
7	90430-04004	•GASKET	1	
8	98901-04008	•SCREW, bind	1	
9	137-13138-01	•PLATE, adjusting	1	
10	137-13137-00-03	•SHIM (0.3T)	1	UR
	137-13137-00-05	•SHIM (0.5T)	1	UR
	137-13137-00-10	•SHIM (1.0T)	1	UR
11	92901-05100	•WASHER, spring	1	
12	95301-05600	•NUT	1	
13	363-13133-01	CLIP	1	
14	275-13175-01	SHAFT, worm	1	
15	90201-08624	WASHER, plate	1	
16	126-13116-00	GASKET, pump case	1	
17	98501-05016	SCREW, Pan head	2	
18	93101-10002	OIL SEAL	1	
19	137-13176-00	METAL, worm shaft outer	1	
20	382-13178-60	GEAR, pump drive (30T)	1	
21	93603-22028	PIN, dowel	1	
22	93430-08006	CIRCLIP	1	
23	525-13174-00	HOLDER, oil pipe	1	
24	90468-02033	CLIP	1	

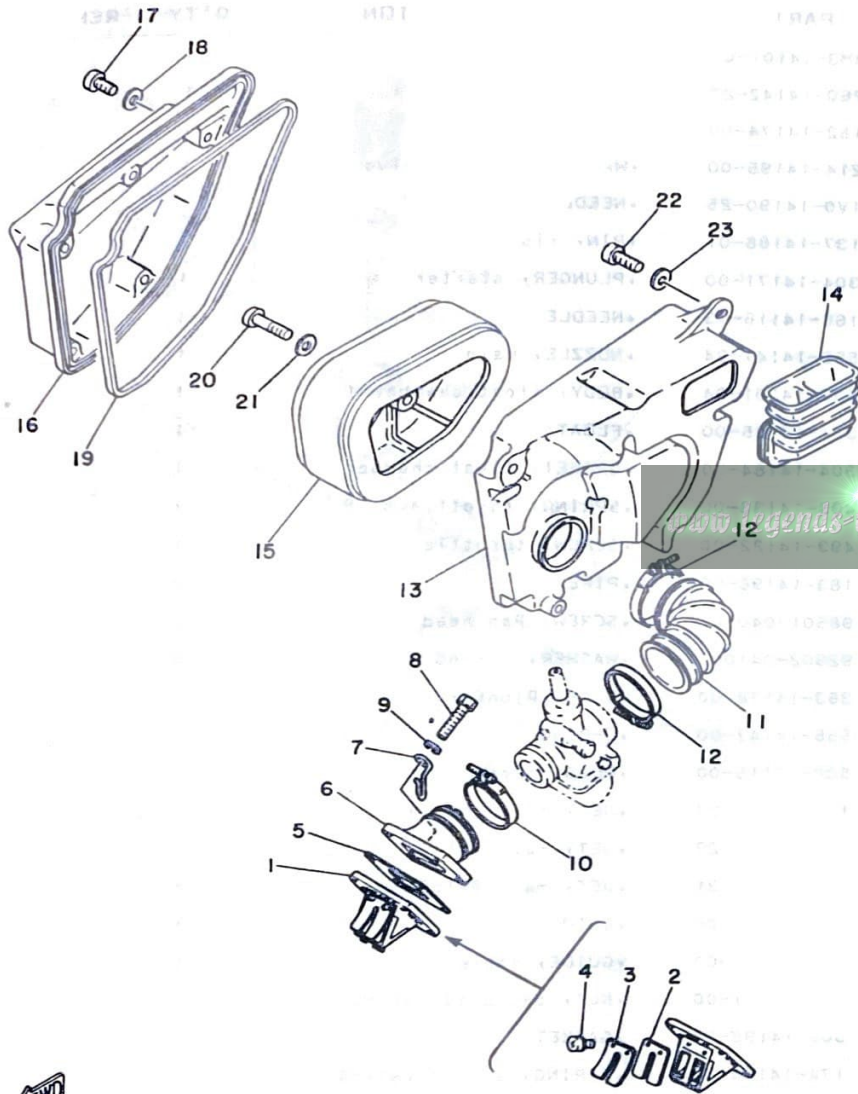


4M3700-0040

B5



FIG. 5 INTAKE



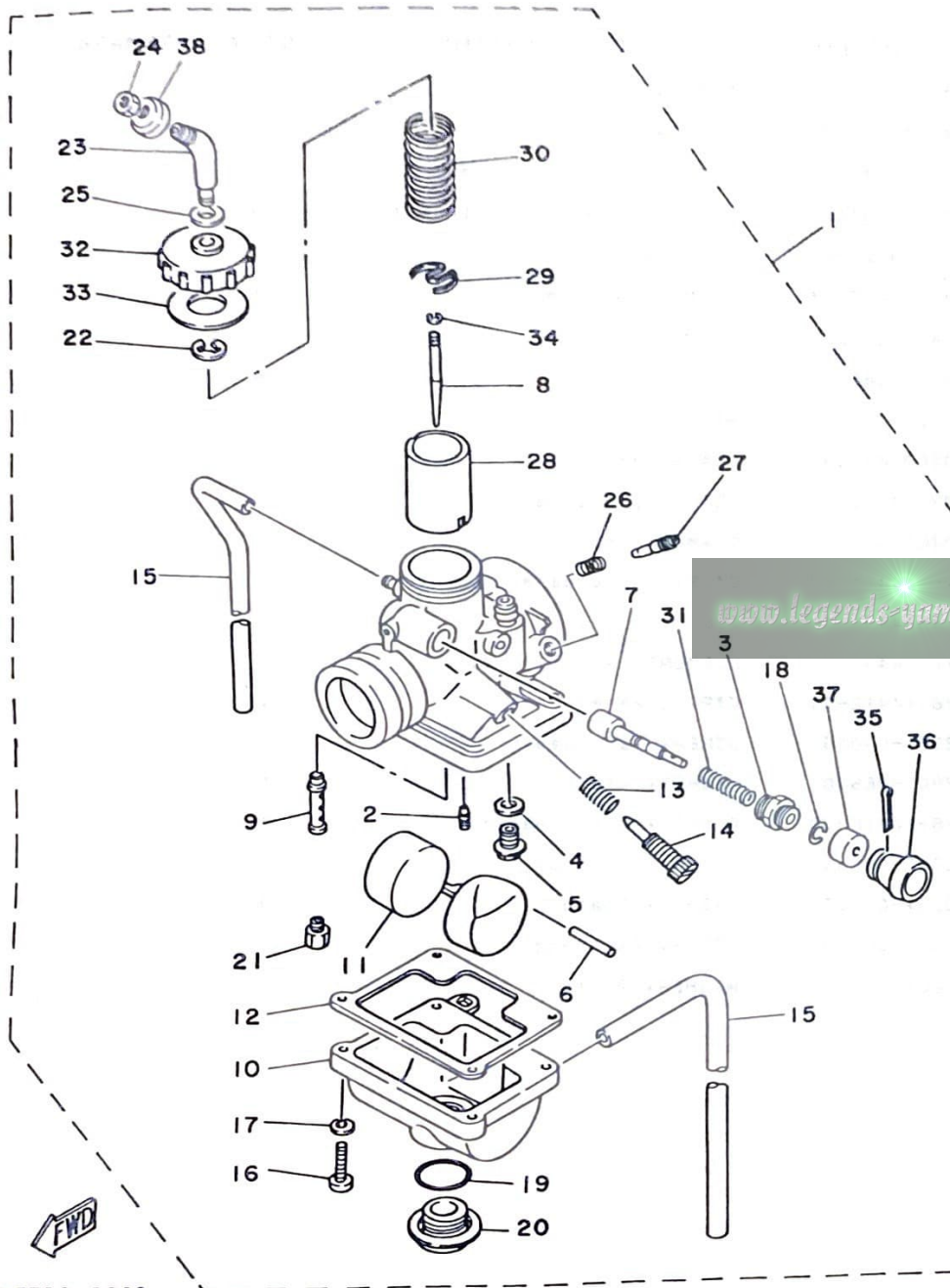
REF. NO.	PART NO.	DESCRIPTION	Q'TY	REMARKS
1	345-13610-10	REED VALVE ASSY	1	
2	1A0-13613-00	•REED, valve	2	
3	345-13616-70	•STOPPER, reed valve	2	
4	97602-03108	•SCREW, Pan head with washer	4	
5	314-13621-02	GASKET, valve seat	1	
6	525-13565-01	JOINT, carburetor	1	
7	90462-20029	CLAMP	1	
8	97301-06025	BOLT	4	
9	92901-06600	WASHER, Plate	4	
10	90460-43053	CLAMP, hose	1	
11	4M3-14453-00	JOINT, air cleaner 1	1	
12	90460-51059	CLAMP, hose	2	
13	3V6-14411-00	CASE, air cleaner 1	1	
14	1Y8-14437-01	DUCT	1	
15	3V6-14451-00	ELEMENT, air cleaner	1	
16	3V6-14412-00	CAP, cleaner case 1	1	
17	92501-06015	SCREW, Pan head	5	
18	92901-06600	WASHER, Plate	5	
19	3V6-14416-00	GASKET, air cleaner	1	
20	92501-06035	SCREW, Pan head	1	
21	90201-06067	WASHER, Plate	1	
22	92501-06020	SCREW, Pan head	2	
23	90201-06067	WASHER, Plate	2	



4M3700-0050

**B6**

FIG. 6 CARBURETOR

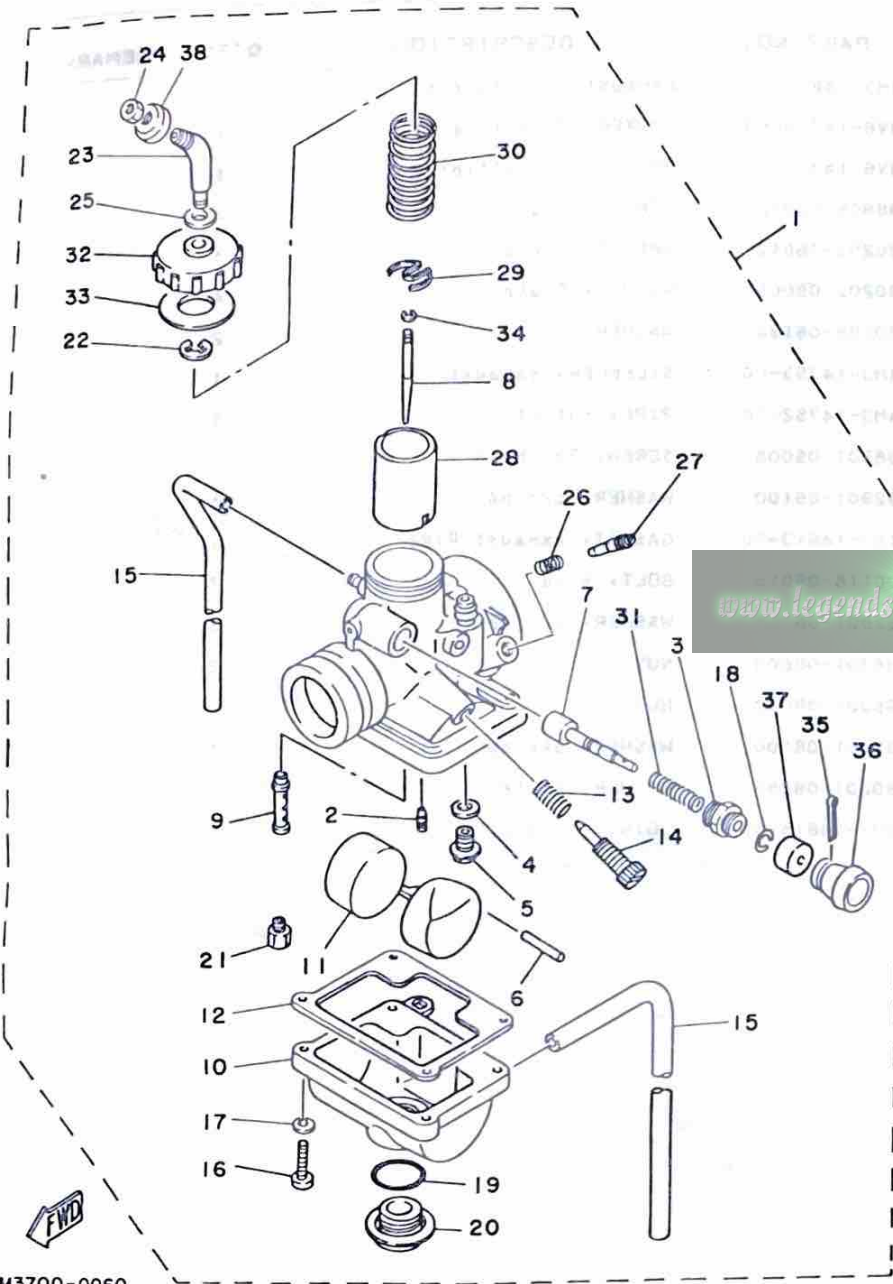


REF. NO.	PART NO.	DESCRIPTION	Q'TY	REMARKS
1	4M3-14101-00	CARBURETOR ASSY 1	1	
2	260-14142-27	•JET, Pilot (#27.5)	1	
3	152-14174-00	•CAP, Plunger	1	
4	214-14195-00	•WASHER, needle valve	1	
5	1V0-14190-25	•NEEDLE VALVE ASSY	1	
6	137-14186-01	•PIN, float	1	
7	304-14171-00	•PLUNGER, starter	1	
8	166-14116-13	•NEEDLE	1	
9	558-14141-34	•NOZZLE, main	1	
10	539-14181-04	•BODY, float chamber 1	1	
11	314-14185-00	•FLOAT	1	
12	304-14184-00	•GASKET, float chamber	1	
13	493-14133-00	•SPRING, throttle stop	1	
14	493-14122-00	•SCREW, throttle	1	
15	183-14196-00	•PIPE	2	
16	98501-04016	•SCREW, Pan head	4	
17	92902-04100	•WASHER, spring	4	
18	353-14138-00	•CLIP, plunger	1	
19	558-14147-00	•O-RING	1	
20	500-14115-00	•PLUG, screw	1	
21	137-14143-27	•JET, main (#135)	1	UR
	137-14143-29	•JET, main (#145)	1	UR
	137-14143-31	•JET, main (#155)	1	UR
22	363-14137-00	•CLIP	1	
23	1T9-14155-00	•GUIDE, cable	1	
24	127-14161-00	•NUT, cable adjusting	1	
25	509-14198-00	•GASKET	1	
26	174-14134-00	•SPRING, air adjusting	1	

4M3700-0060

**B7**

FIG. 6 CARBURETOR

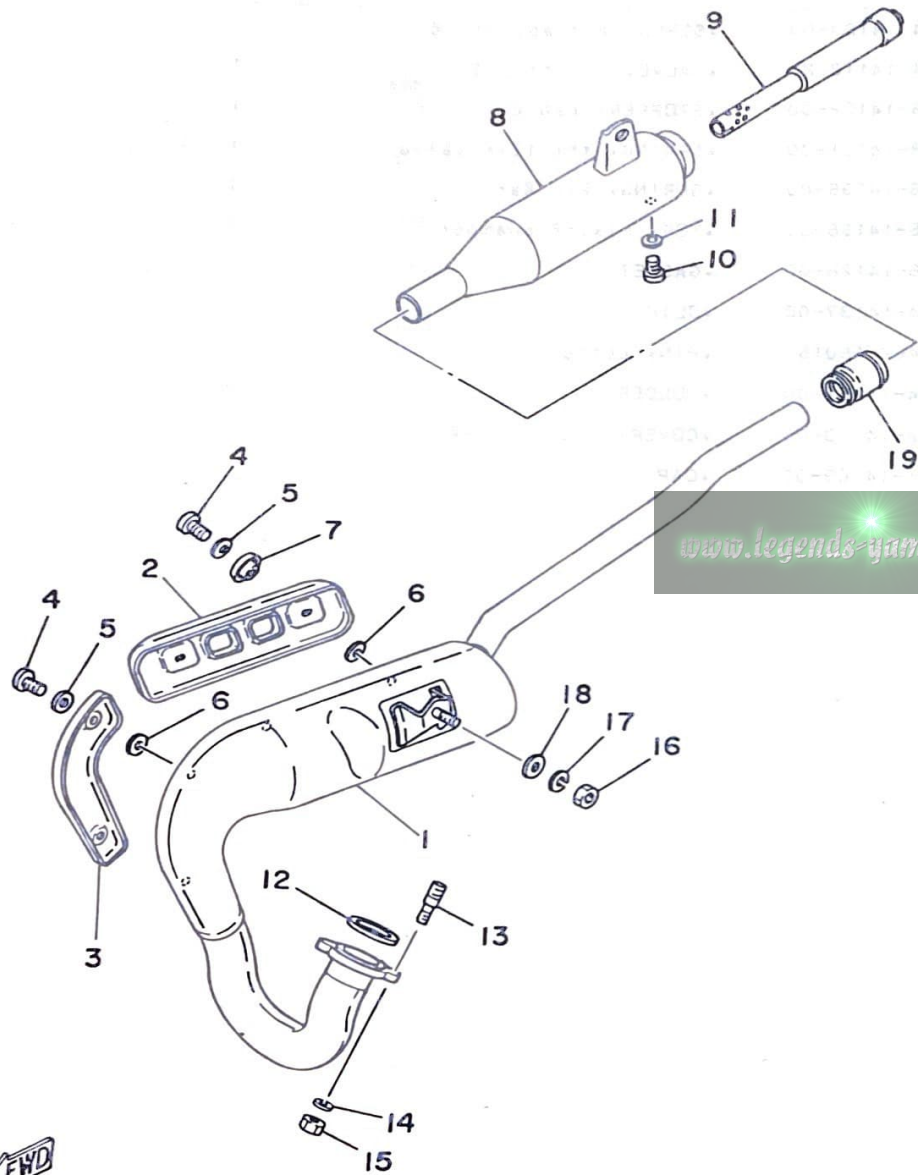


REF. NO.	PART NO.	DESCRIPTION	Q'TY	REMARKS
27	174-14123-00	•SCREW, air adjusting	1	
28	314-14112-20	•VALVE, throttle 1	1	
29	246-14132-00	•STOPPER, cable	1	
30	248-14131-00	•SPRING, throttle valve	1	
31	156-14135-00	•SPRING, Plunger	1	
32	2A6-14158-00	•TOP, mixing chamber	1	
33	2A6-14126-00	•GASKET	1	
34	164-14137-00	•CLIP	1	
35	91402-16015	•PIN, cotter	1	
36	304-14261-00	•HOLDER	1	
37	132-14173-00	•COVER, Plunger cap	1	
38	1M1-14169-00	•CAP	1	

4M3700-0060

**B8**

FIG. 7 EXHAUST



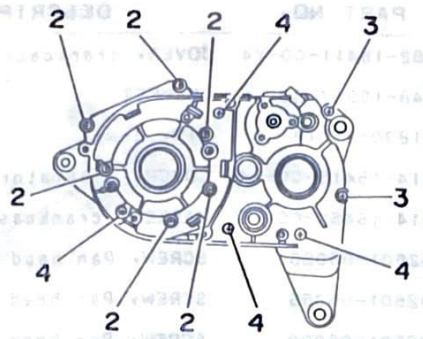
REF. NO.	PART NO.	DESCRIPTION	Q'TY	REMARKS
1	4M3-14610-00	EXHAUST PIPE ASSY 1	1	
2	3V6-14718-00	PROTECTOR, muffler 1	1	
3	3V6-14728-00	PROTECTOR, muffler 2	1	
4	98906-06012	SCREW, bind	4	
5	90202-06010	WASHER, Plate	4	
6	90202-05005	WASHER, Plate	4	
7	90209-06194	WASHER	2	
8	4M3-14753-00	SILENCER, exhaust	1	
9	4M3-14752-00	PIPE, outlet	1	
10	98501-05008	SCREW, Pan head	1	
11	92901-05100	WASHER, sPring	1	
12	152-14613-00	GASKET, exhaust Pipe	1	
13	90116-06016	BOLT, stud	2	
14	92901-06100	WASHER, sPring	2	
15	95301-06600	NUT	2	
16	95301-08600	NUT	1	
17	92901-08100	WASHER, sPring	1	
18	90201-08753	WASHER, Plate	1	
19	3M7-14615-00	JOINT, exhaust 1	1	



4M3700-0070

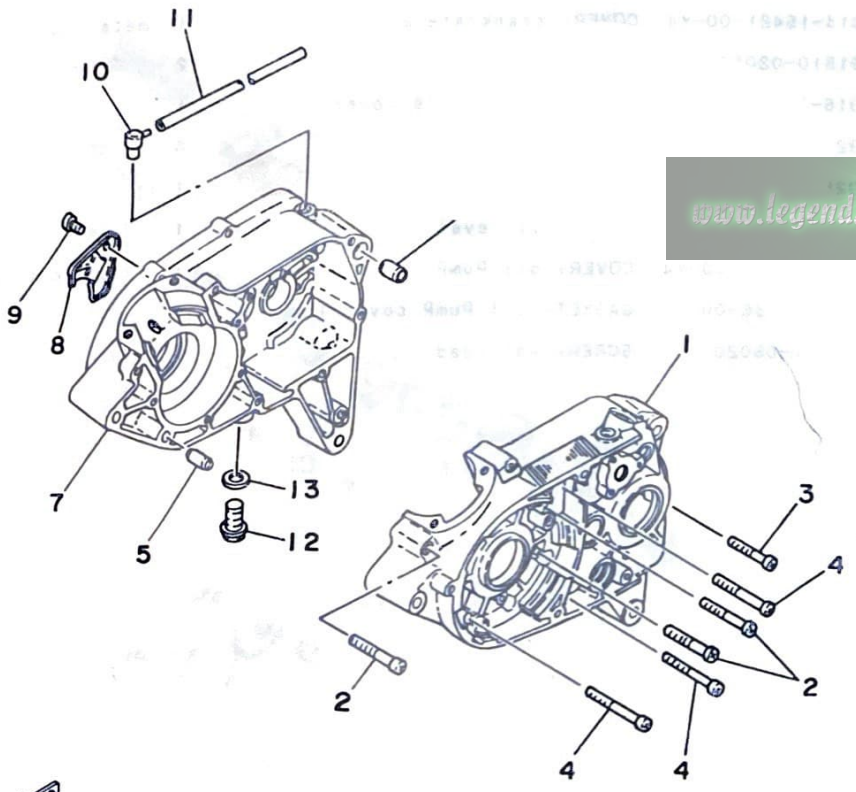
**B9**

FIG. 8 CRANKCASE



REF. NO.	PART NO.	DESCRIPTION	Q'TY	REMARKS
1	4M3-15111-01	CRANKCASE 1	1	
2	92501-06045	SCREW, Pan head	6	
3	92501-06055	SCREW, Pan head	2	
4	92501-06065	SCREW, Pan head	4	
5	91830-21014	PIN, dowel	1	
6	91830-24016	PIN, dowel	1	
7	3M5-15121-00	CRANKCASE 2	1	
8	304-15128-00	HOLDER	1	
9	92501-08010	SCREW, Pan head	1	
10	498-15371-00	BREATHER	1	
11	90446-07009	HOSE	1	
12	90340-12005	PLUG, straight screw	1	
13	90430-12038	GASKET	1	

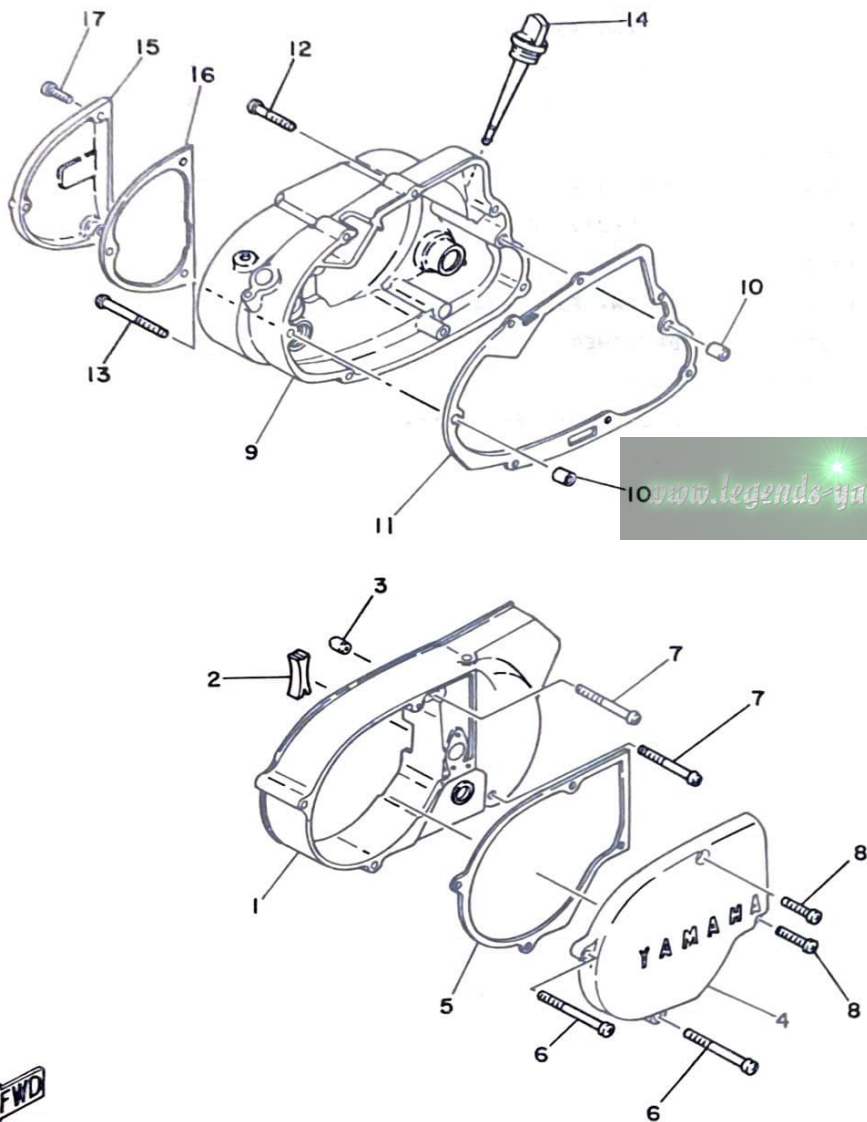
[www.legends-yamaha-enduros.com](http://www.legends-yamaha-enduros.com)



4M3700-0080

**B10**

FIG. 9 CRANKCASE COVER



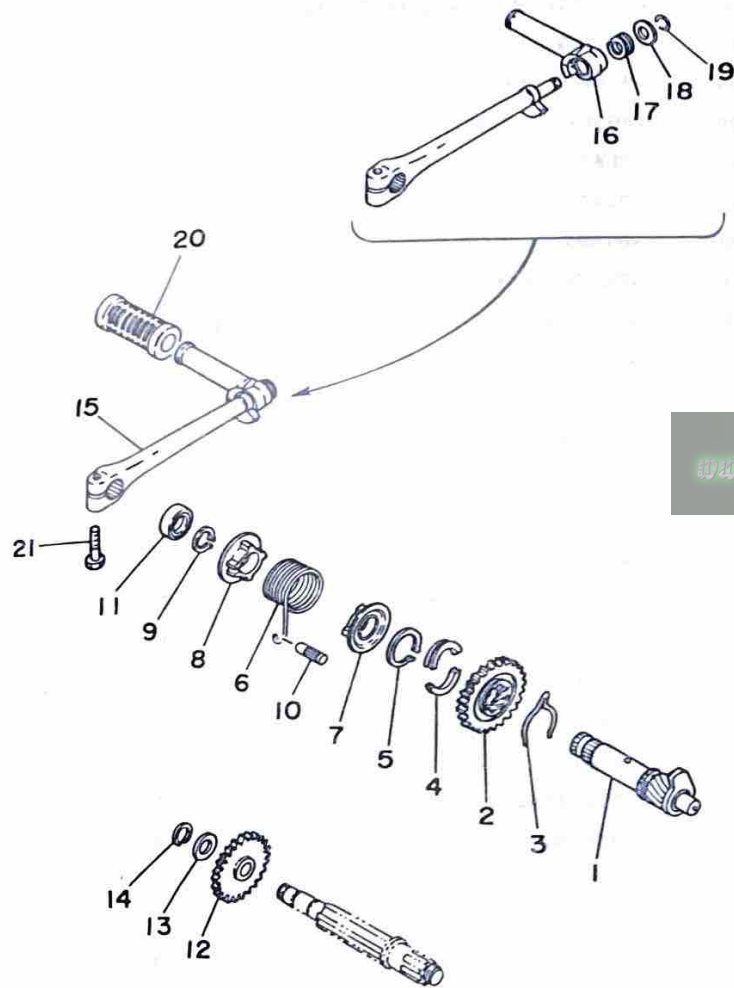
REF. NO.	PART NO.	DESCRIPTION	Q'TY	REMARKS
1	482-15411-00-Y4	COVER, crankcase 1	1	metallic silver
2	248-15357-00	GROMMET	1	
3	91830-21014	PIN, dowel	2	
4	314-15415-00-Y4	COVER, Generator	1	metallic silver
5	314-15455-00	GASKET, crankcase cover	1	
6	92501-06065	SCREW, Pan head	2	
7	92501-06055	SCREW, Pan head	2	
8	92501-06030	SCREW, Pan head	2	
9	314-15421-00-Y4	COVER, crankcase 2	1	metallic silver
10	91810-02014	PIN, dowel	2	
11	315-15451-02	GASKET, crankcase cover	1	
12	92501-06035	SCREW, Pan head	6	
13	92501-06060	SCREW, Pan head	1	
14	315-15362-01	PLUG, oil level	1	
15	314-15416-00-Y4	COVER, oil Pump	1	metallic silver
16	444-15456-00	GASKET, oil Pump cover 1	1	
17	92501-06020	SCREW, Pan head	3	



4M3700-0090

**B11**

FIG. 10 KICK STARTER



REF. NO.	PART NO.	DESCRIPTION	Q'TY	REMARKS
1	315-15660-00	KICK AXLE ASSY	1	
2	315-15641-00	GEAR, kick (27T)	1	
3	90468-26048	CLIP	1	
4	248-15654-00	HOLDER, kick gear	2	
5	93410-30012	CIRCLIP	1	
6	90508-26040	SPRING, torsion	1	
7	214-15664-00	GUIDE, spring	1	
8	214-15676-00	COVER, spring	1	
9	93410-20009	CIRCLIP	1	
10	248-15668-00	STOPPER	1	
11	93104-20017	OIL SEAL	1	
12	1E8-15651-00	GEAR, kick idle (26T)	1	
13	132-15653-00-10	WASHER	1	
14	93410-13004	CIRCLIP	1	
15	3V6-15610-00	KICK CRANK ASSY	1	
16	214-15612-01	•LEVER, kick	1	
17	90504-18009	•SPRING, compression	1	
18	214-15616-00	•WASHER, kick lever	1	
19	93440-11029	•CIRCLIP	1	
20	214-15618-00	COVER, kick lever	1	
21	97321-08030	BOLT	1	

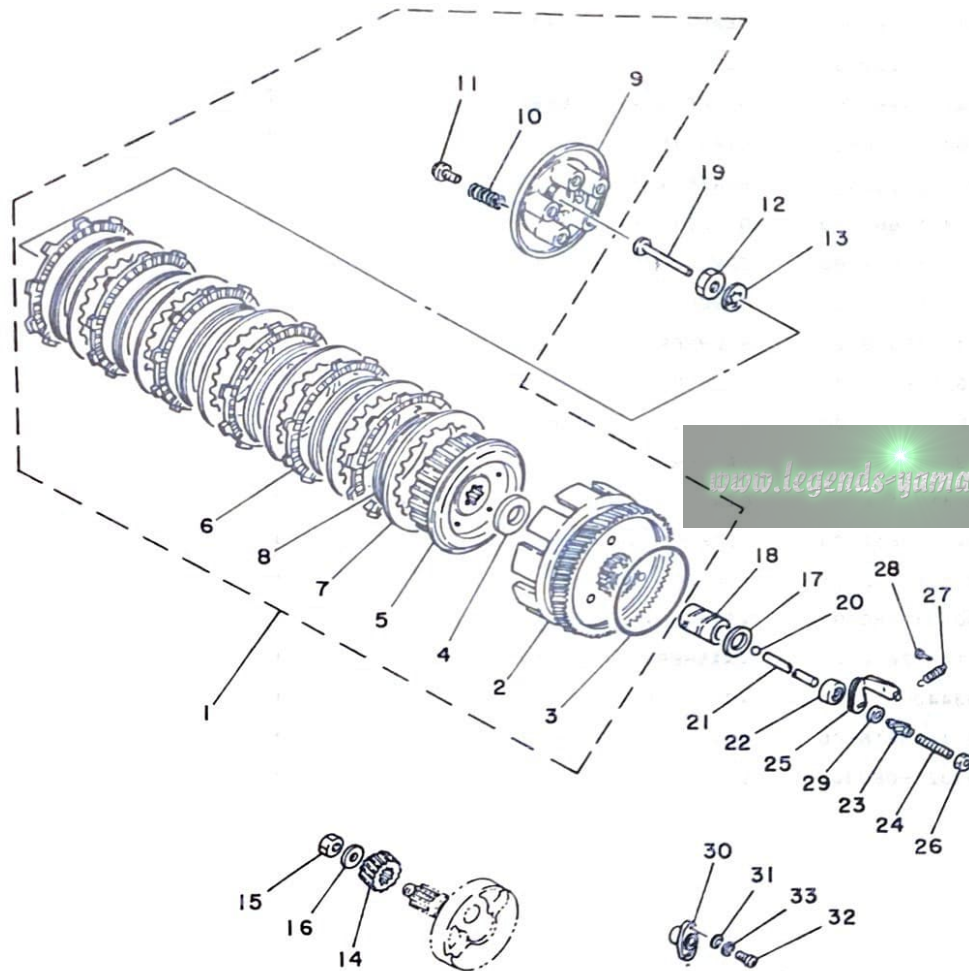
www.legends-yamaha-enduros.com



4M3700-0100

**B12**

FIG. 11 CLUTCH



REF. NO.	PART NO.	DESCRIPTION	Q'TY	REMARKS
1	4M3-16300-00	CLUTCH ASSY	1	
2	4M3-16150-00	•PRIMARY DRIVEN GEAR COMP.	1	
3	93210-89268	•O-RING	1	
4	174-16154-00	•PLATE, thrust 1	1	
5	1E8-16371-00	•BOSS, clutch	1	
6	559-16321-01	•PLATE, friction	7	
7	2A6-16324-00	•PLATE, clutch 1	6	
8	307-16367-00	•RING, cushion	6	
9	132-16351-00	•PLATE, Pressure 1	1	
10	90501-20122	•SPRING, compression	5	
11	90119-05001	•BOLT, with washer	5	
12	90179-16018	NUT	1	
13	90215-16020	WASHER, lock	1	
14	382-16111-62	GEAR, Primary drive (19T)	1	
15	90170-12060	NUT	1	
16	90208-12015	WASHER, conical spring	1	
17	174-16164-00	PLATE, thrust 2	2	
18	90387-20439	COLLAR	1	
19	137-16356-00	ROD, Push 1	1	
20	93501-04011	BALL	1	
21	248-16357-00	ROD, Push 2	1	
22	93109-07024	OIL SEAL	1	
23	241-16341-01	SCREW, Push	1	
24	90113-06013	BOLT, set	1	
25	241-16342-00	LEVER, Push	1	
26	95301-06700	NUT	1	
27	90506-10019	SPRING, tension	1	
28	132-16346-00	HOOK, spring	1	

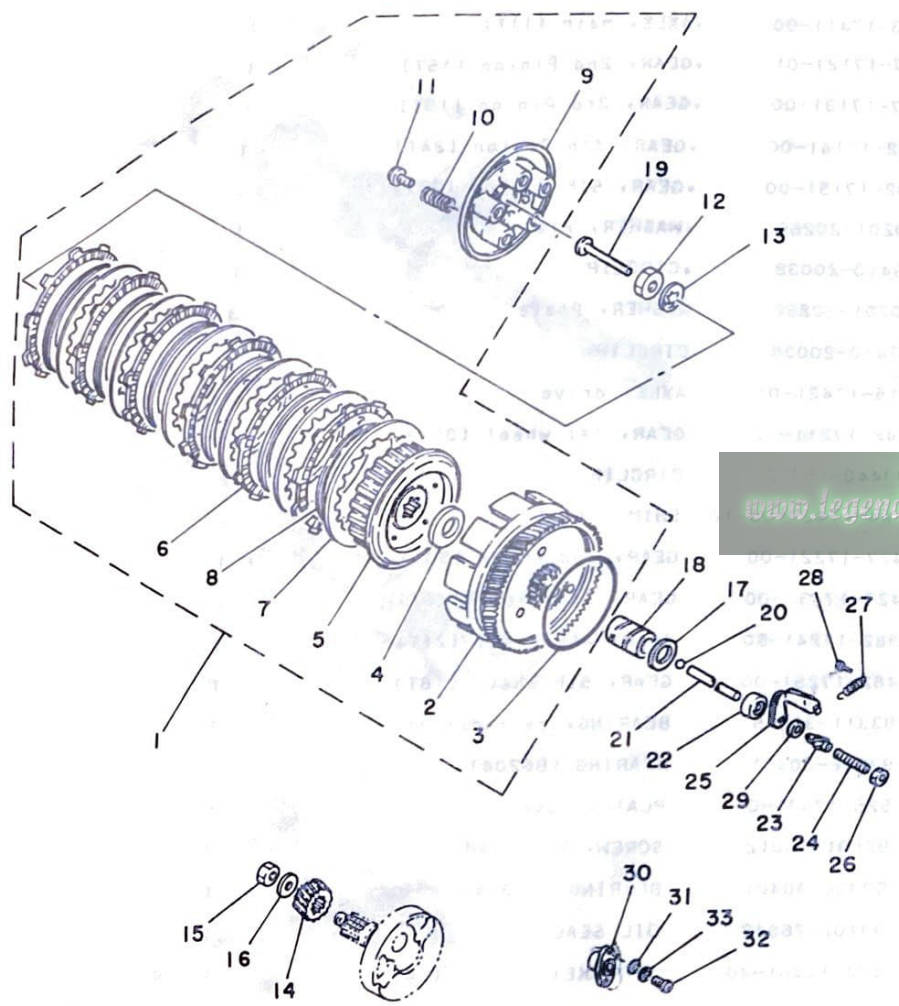


4M3700-0110

**B13**



FIG. 11 CLUTCH

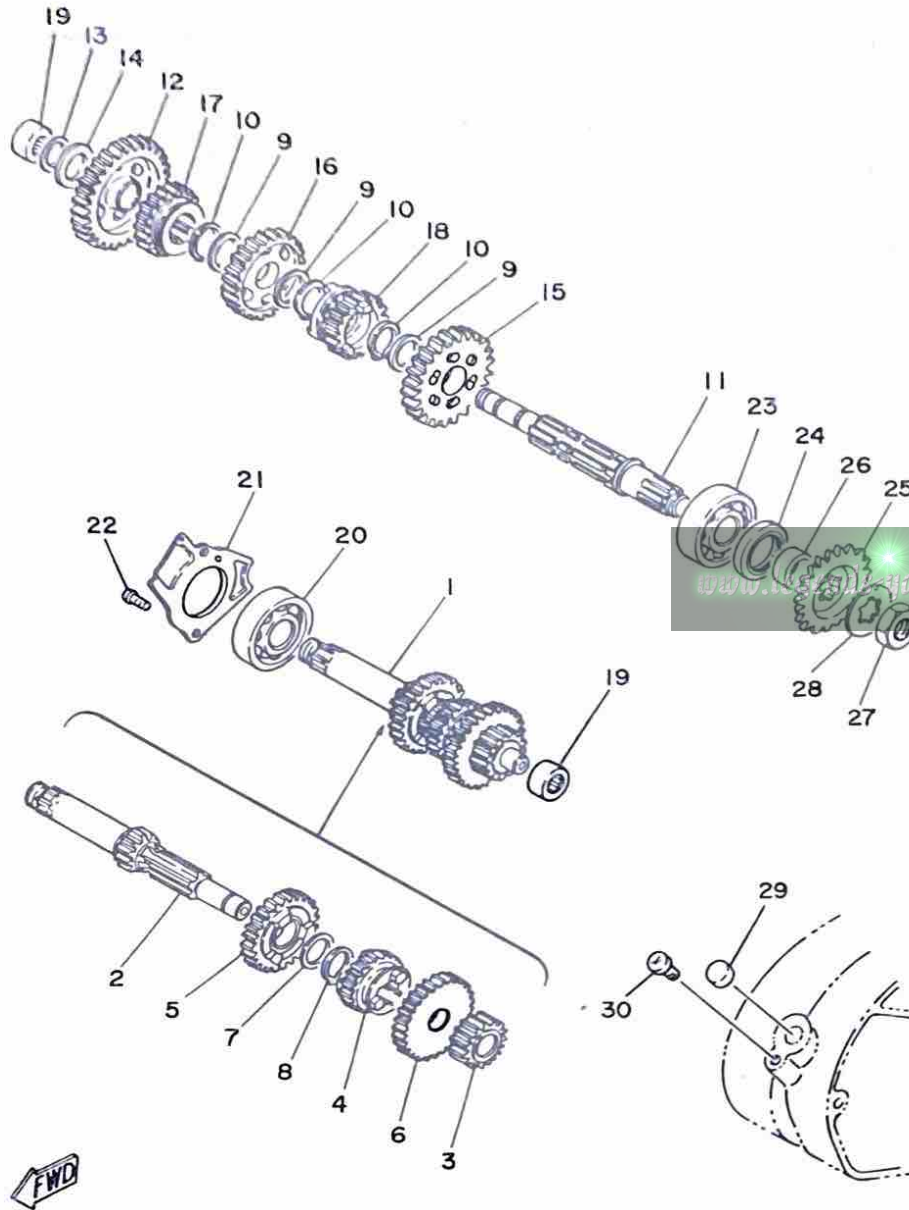


REF. NO.	PART NO.	DESCRIPTION	Q'TY	REMARKS
29	93104-11028	OIL SEAL	1	
30	314-16396-01	HOUSING, Push screw	1	
31	92901-06600	WASHER, Plate	2	
32	92501-06015	SCREW, Pan head	2	
33	92901-06100	WASHER, sPring	2	

www.legends-yamaha-enduros.com

FIG. 12 TRANSMISSION

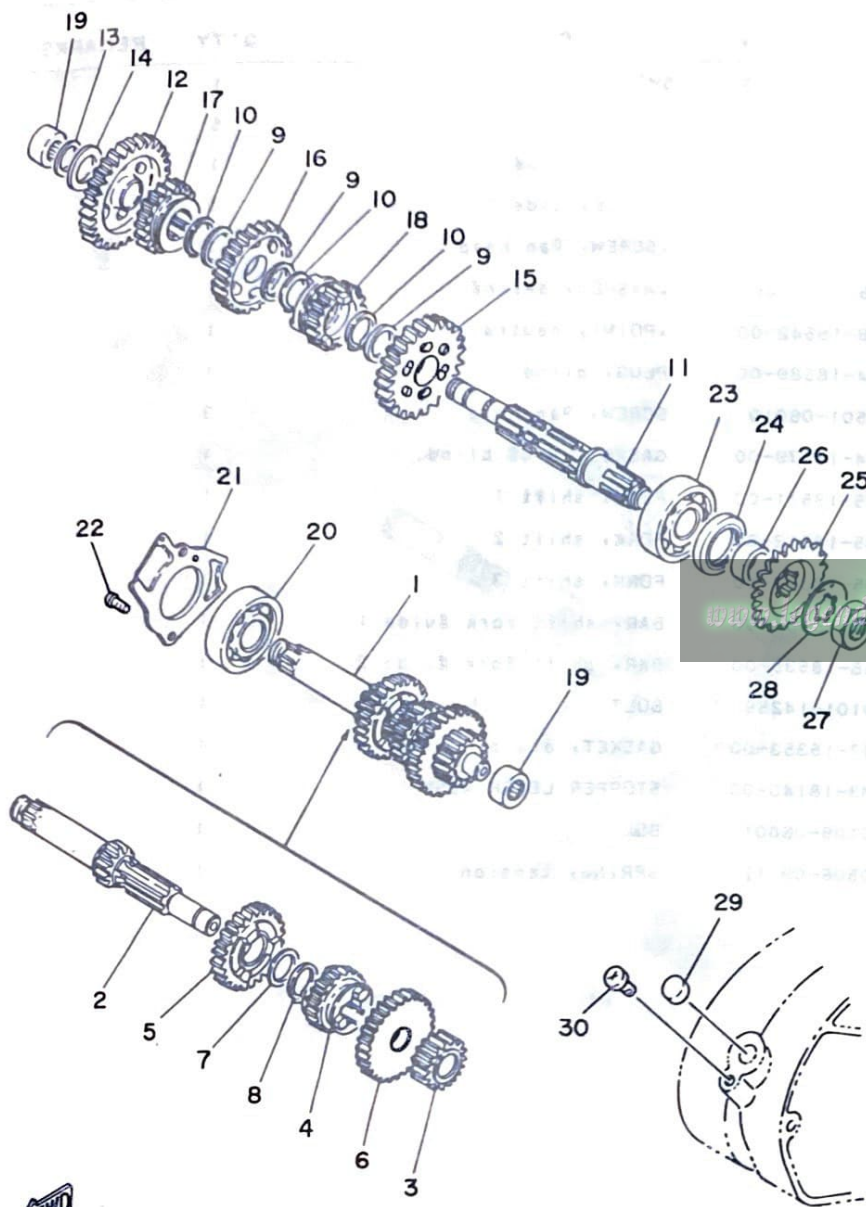
REF. NO.	PART NO.	DESCRIPTION	Q'TY	REMARKS
1	482-17410-00	MAIN AXLE COMP.	1	
2	443-17411-00	.AXLE, main (11T)	1	
3	437-17121-01	.GEAR, 2nd Pinion (15T)	1	
4	427-17131-00	.GEAR, 3rd Pinion (19T)	1	
5	482-17141-00	.GEAR, 4th Pinion (24T)	1	
6	482-17151-00	.GEAR, 5th Pinion (27T)	1	
7	90201-20266	.WASHER, Plate	1	
8	93410-20038	.CIRCLIP	1	
9	90201-20266	WASHER, Plate	3	
10	93410-20038	CIRCLIP	3	
11	315-17421-01	AXLE, drive	1	
12	248-17211-00	GEAR, 1st wheel (35T)	1	
13	93440-15012	CIRCLIP	1	
14	164-17427-00-10	SHIM 1 (1.0T)	1	
15	427-17221-00	GEAR, 2nd wheel (30T)	1	
16	427-17231-00	GEAR, 3rd wheel (26T)	1	
17	382-17241-60	GEAR, 4th wheel (21T)	1	
18	482-17251-00	GEAR, 5th wheel (18T)	1	
19	93311-31515	BEARING, cylindrical	2	
20	93306-20401	BEARING (B6204)	1	
21	525-17471-00	PLATE, cover	1	
22	92501-06012	SCREW, Pan head	2	
23	93306-30401	BEARING (B6304)	1	
24	93102-26042	OIL SEAL	1	
25	174-17461-40	SPROCKET, drive (14T)	1	UR
	174-17461-50	SPROCKET, drive (15T)	1	UR
	174-17461-60	SPROCKET, drive (16T)	1	UR



4M3700-0120

**B15**

FIG. 12 TRANSMISSION



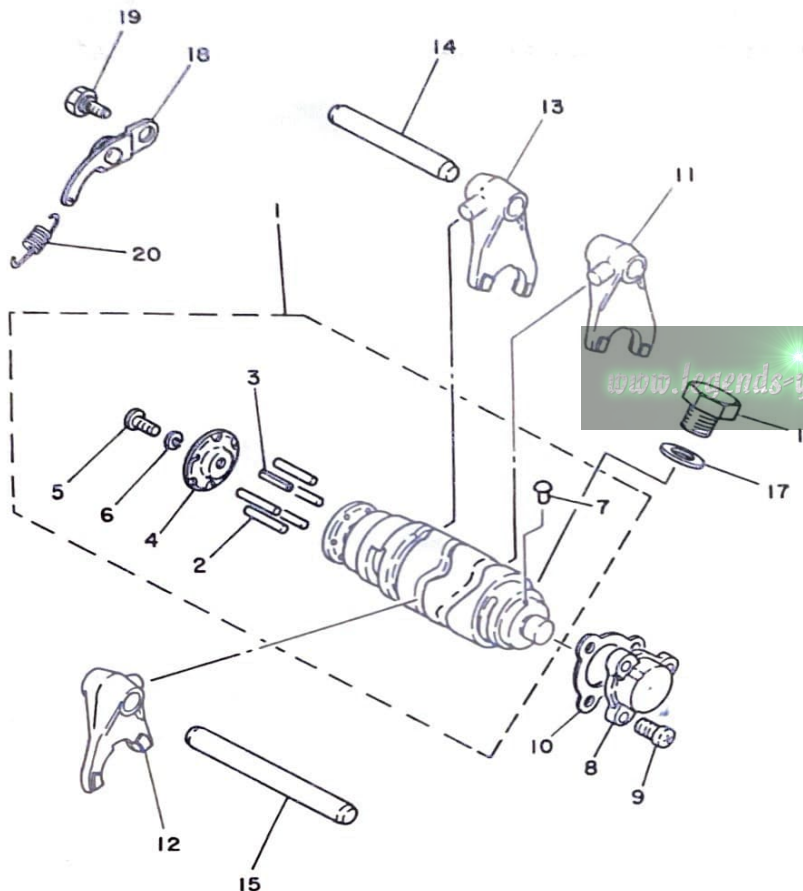
REF. NO.	PART NO.	DESCRIPTION	Q'TY	REMARKS
26	90387-20491	COLLAR	1	
27	90179-16018	NUT	1	
28	90215-16020	WASHER, lock	1	
29	90338-16029	PLUG	1	
30	92501-06010	SCREW, Pan head	1	



4M3700-0120

C2

FIG. 13 SHIFT CAM-FORK



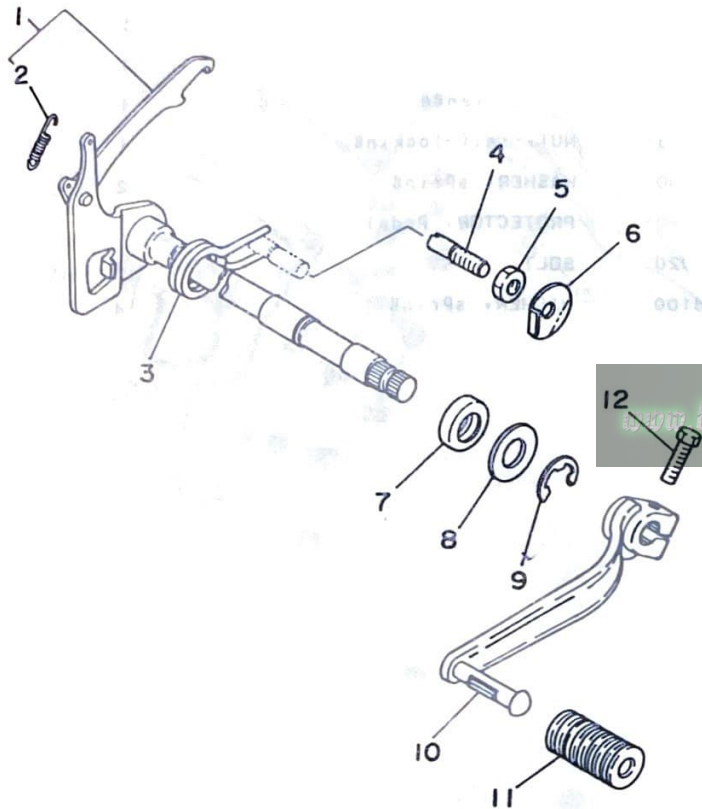
REF. NO.	PART NO.	DESCRIPTION	Q'TY	REMARKS
1	4M3-18540-00	SHIFT CAM ASSY	1	
2	93604-22050	.PIN, dowel	5	
3	91609-40016	.PIN, sPring	1	
4	382-18561-60	.PLATE, side 1	1	
5	98501-05012	.SCREW, Pan head	1	
6	92901-05100	.WASHER, sPring	1	
7	136-18542-00	.POINT, neutral	1	
8	164-18589-00	PLUG, blind	1	
9	92501-06010	SCREW, Pan head	3	
10	164-18579-00	GASKET, Plug blind	1	
11	3M5-18511-00	FORK, shift 1	1	
12	3M5-18512-00	FORK, shift 2	1	
13	3M5-18513-00	FORK, shift 3	1	
14	2A6-18531-00	BAR, shift fork Guide 1	1	
15	2A6-18535-00	BAR, shift fork Guide 2	1	
16	90101-14259	BOLT	1	
17	137-15353-00	GASKET, drain	1	
18	4M3-18140-00	STOPPER LEVER ASSY	1	
19	90109-06001	BOLT	1	
20	90506-09112	SPRING, tension	1	



4M3700-0130

C3

FIG. 14 SHIFT SHAFT PEDAL



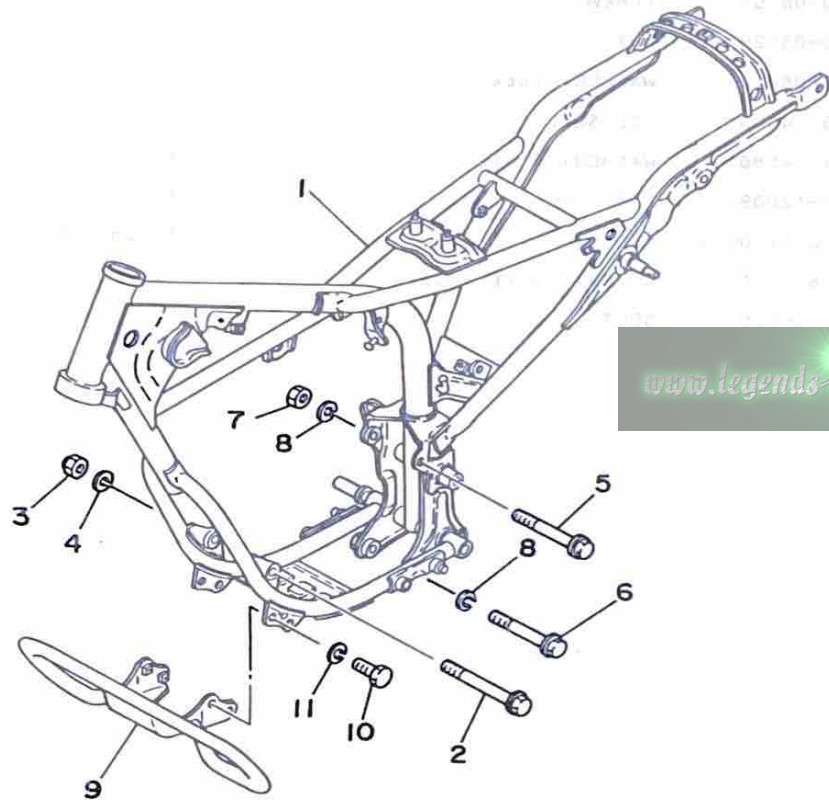
REF. NO.	PART NO.	DESCRIPTION	Q'TY	REMARKS
1	4M3-18101-01	SHIFT SHAFT ASSY	1	
2	90506-09009	SPRING, tension	1	
3	90508-32437	SPRING, torsion	1	
4	90149-08155	SCREW	1	
5	90170-08029	NUT	1	
6	90215-08014	WASHER, lock	1	
7	93109-14005	OIL SEAL	1	
8	90201-14586	WASHER, Plate	1	
9	93430-12009	CIRCLIP	1	
10	367-18111-00-91	PEDAL, shift	1	uni chrome
11	132-18113-01	COVER, shift Pedal	1	
12	97321-06020	BOLT	1	



4M3700-0140

C4

FIG. 15 FRAME



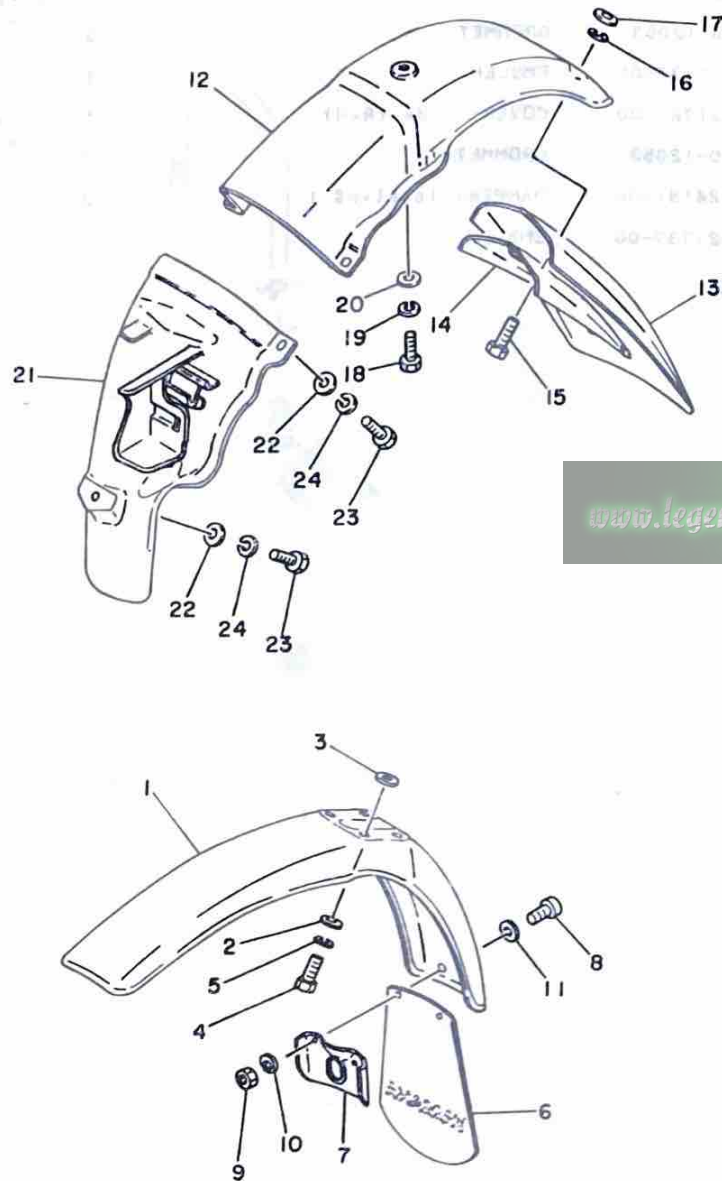
REF. NO.	PART NO.	DESCRIPTION	Q'TY	REMARKS
1	4M3-21110-00-33	FRAME COMP	1	yamaha black
2	95821-08115	BOLT, flange	1	
3	90185-08054	NUT, self-locking	1	
4	92901-08100	WASHER, sPring	1	
5	95821-10105	BOLT, flange	1	
6	95821-10090	BOLT, flange	1	
7	90185-10035	NUT, self-locking	1	
8	92901-10100	WASHER, sPring	2	
9	3V6-21473-01	PROTECTOR, Pedal	1	
10	97301-08020	BOLT	4	
11	92901-08100	WASHER, sPring	4	



4M3700-0150

C5

FIG. 16 FRONT FENDER•REAR FENDER



REF. NO.	PART NO.	DESCRIPTION	Q'TY	REMARKS
1	4M3-21511-00	FENDER, front	1	competition yellow
2	90201-06067	WASHER, Plate	4	
3	90209-06187	WASHER	4	
4	97301-06020	BOLT	4	
5	92901-06100	WASHER, sPring	4	
6	4M3-21621-00	FLAP	1	
7	482-21522-00	BAND, flap	1	
8	92501-06018	SCREW, Pan head	2	
9	95301-06600	NUT	2	
10	92901-06100	WASHER, sPring	2	
11	90201-06067	WASHER, Plate	2	
12	4M3-21611-00	FENDER, rear	1	competition yellow
13	4M3-21621-00	FLAP	1	
14	482-21622-01	BAND, flap	1	
15	97301-06025	BOLT	2	
16	92901-06100	WASHER, sPring	2	
17	92901-06600	WASHER, Plate	2	
18	97301-06016	BOLT	1	
19	92901-06100	WASHER, sPring	1	
20	90201-06067	WASHER, Plate	1	
21	3V6-21629-01	GUARD, mud	1	
22	90201-06067	WASHER, Plate	3	
23	97301-06020	BOLT	3	
24	92901-06100	WASHER, sPring	3	

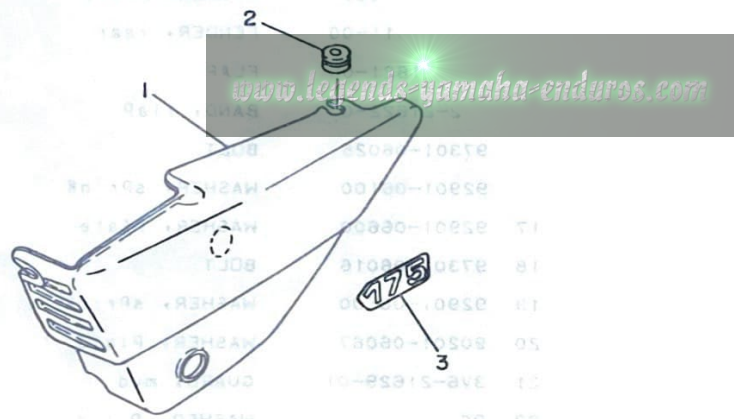
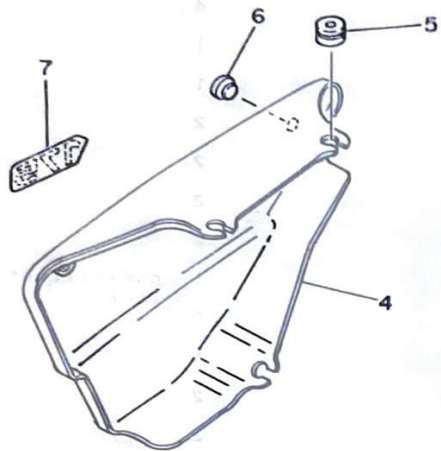


4M3700-0160



FIG. 17 SIDE COVER

REF. NO.	PART NO.	DESCRIPTION	Q'TY	REMARKS
1	4M3-21711-00	COVER, side (L.H)	1	competition yellow
2	90480-12053	GROMMET	3	
3	4M3-21737-00	EMBLEM	1	
4	4M3-21721-00	COVER, side (R.H)	1	competition yellow
5	90480-12053	GROMMET	3	
6	431-24181-00	DAMPER, locatinB 1	2	
7	4M3-21737-00	EMBLEM	1	

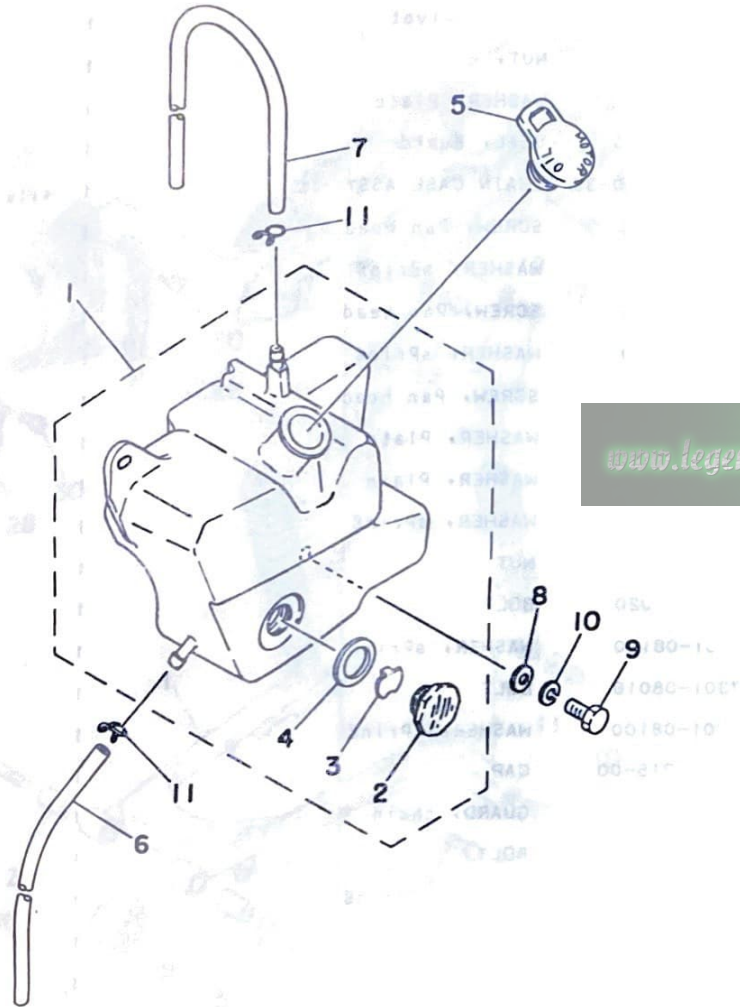


4M3700-0170

C7



FIG. 18 OIL TANK



REF. QTY	PART NO.	DESCRIPTION	Q'TY	REMARKS
1	3V6-21750-00	OIL TANK ASSY	1	
1	1Y1-21764-00	•LENS, level gauge	1	
1	1Y1-2176A-00	•REFLECTOR, level gauge	1	
1	1Y1-21763-00	•GASKET, level gauge	1	
1	1T9-21771-00	BODY, cap	1	
1	90445-09225	HOSE	1	
1	3V6-21745-00	PIPE, oil tank breather	1	
2	90201-06067	WASHER, Plate	2	
2	97301-06016	BOLT	2	
2	92901-06100	WASHER, spring	2	
2	90467-08003	CLIP	2	

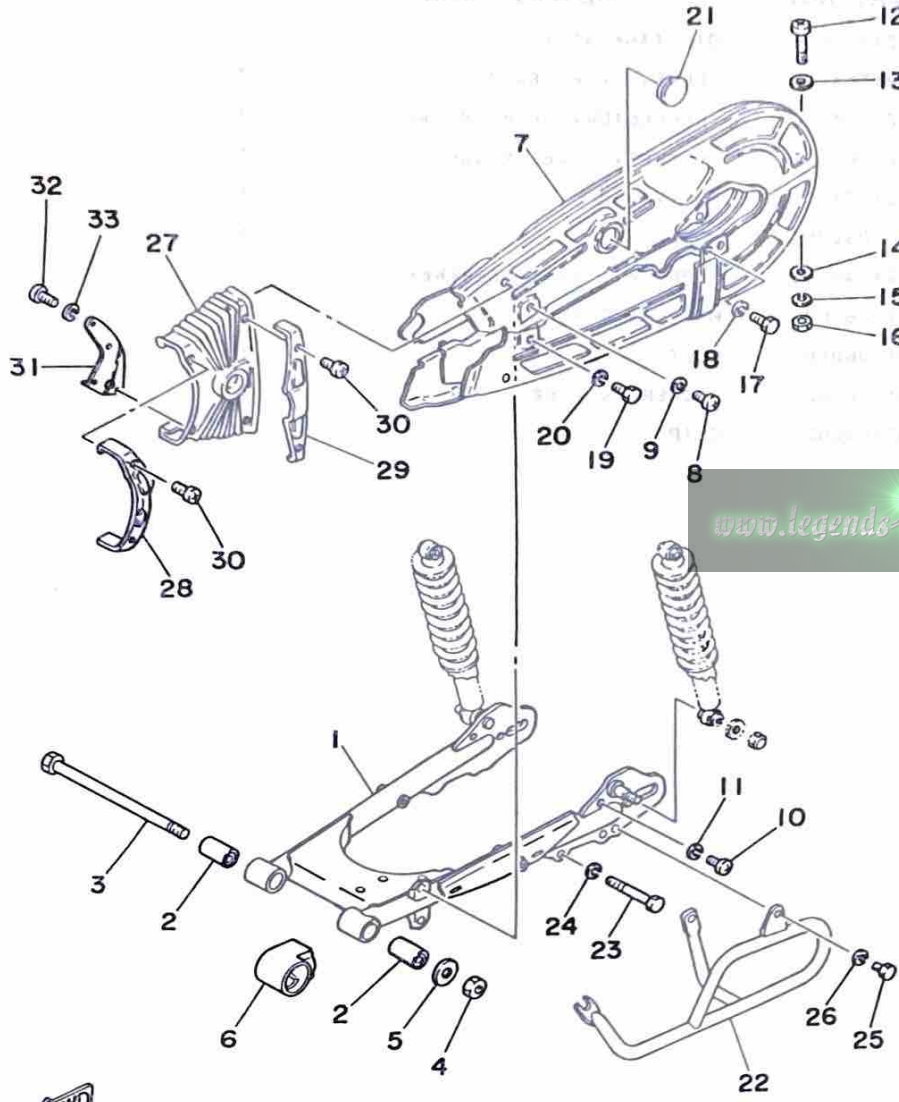
[www.legends-yamaha-enduros.com](http://www.legends-yamaha-enduros.com)



4M3700-0180

C8

FIG. 19 REAR ARM



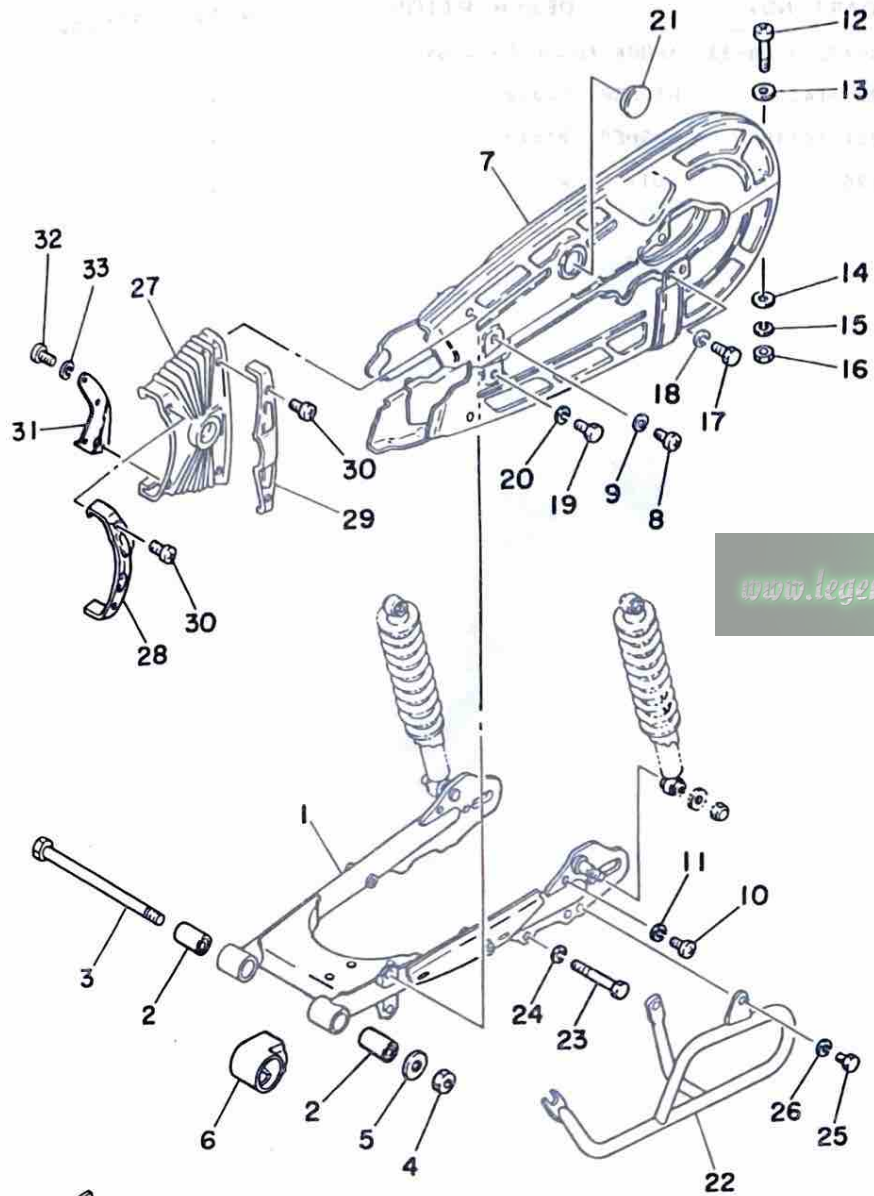
REF. NO.	PART NO.	DESCRIPTION	Q'TY	REMARKS
1	4M3-22110-00-33	REAR ARM COMP.	1	yamaha black
2	174-22123-00	BUSH 1	2	
3	248-22141-00	SHAFT, Pivot	1	
4	95601-14100	NUT, u	1	
5	90201-143A4	WASHER, Plate	1	
6	4M3-22151-00	SEAL, Guard	1	
7	4M3-22310-00-35	CHAIN CASE ASSY	1	silver
8	92501-06012	SCREW, Pan head	1	
9	92901-06100	WASHER, sPring	1	
10	92501-06015	SCREW, Pan head	1	
11	92901-06100	WASHER, sPring	1	
12	92501-06045	SCREW, Pan head	1	
13	92901-06600	WASHER, Plate	1	
14	92901-06200	WASHER, Plain	1	
15	92901-06100	WASHER, sPring	1	
16	95301-06600	NUT	1	
17	97301-08020	BOLT	1	
18	92901-08100	WASHER, sPring	1	
19	97301-08016	BOLT	1	
20	92901-08100	WASHER, sPring	1	
21	148-22315-00	CAP	1	
22	3V6-22318-01	GUARD, chain	1	
23	90101-08439	BOLT	1	
24	92901-08100	WASHER, sPring	1	
25	97301-08016	BOLT	1	
26	92901-08100	WASHER, sPring	1	
27	4M3-22325-00	COVER, dust	1	
28	482-22323-01	STAY, dust cover 1	1	



4M3700-0190

C9

FIG. 19 REAR ARM



REF. NO.	PART NO.	DESCRIPTION	Q'TY	REMARKS
29	382-22322-00	STAY, chain case 2	1	
30	98501-05008	SCREW, Pan head	4	
31	482-22324-01	STAY, dust cover 3	1	
32	92501-06012	SCREW, Pan head	3	
33	92901-06100	WASHER, spring	3	

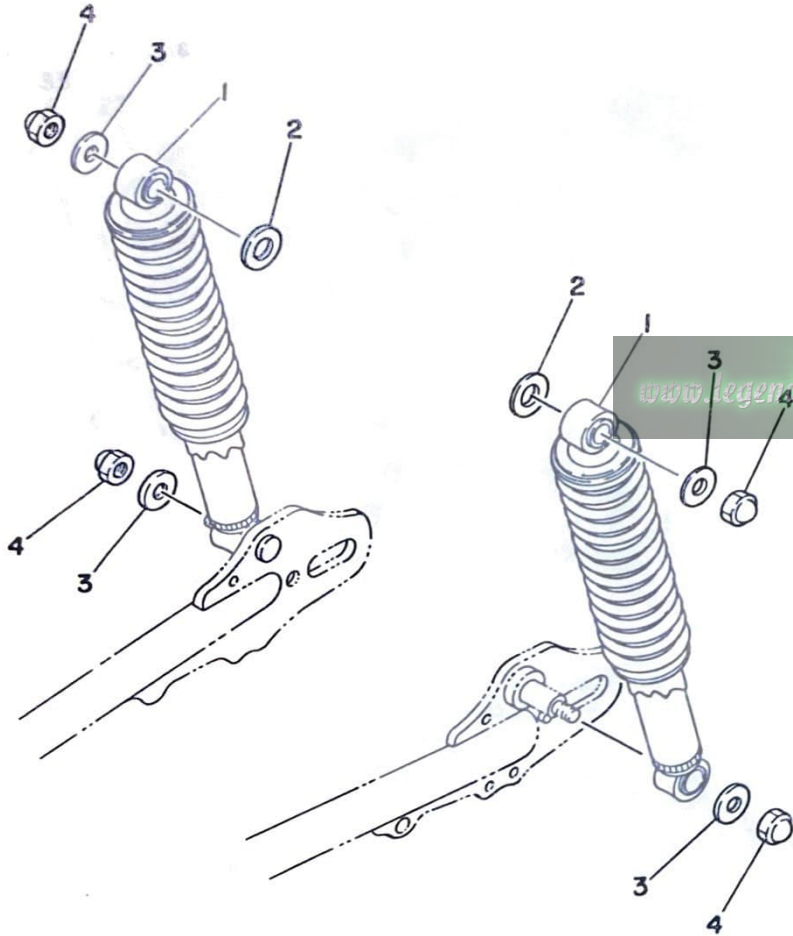


4M3700-0190

C10

FIG. 20 REAR SUSPENSION

REF. NO.	PART NO.	DESCRIPTION	Q'TY	REMARKS
1	4M3-22210-00-33	SHOCK ABSORBER ASSY, rear	2	yamaha black
2	90201-14218	WASHER, plate	2	
3	90201-10140	WASHER, plate	4	
4	90176-10013	NUT, crown	4	



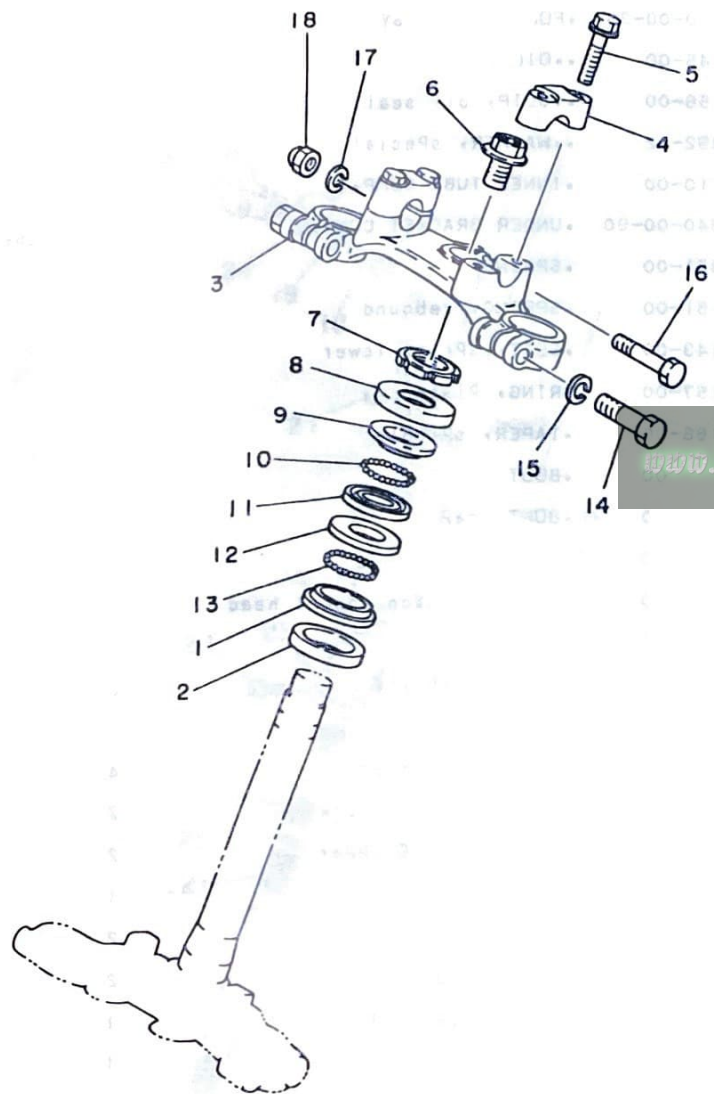
www.legends-yamaha-enduros.com



4M3700-0200

C11

FIG. 21 STEERING



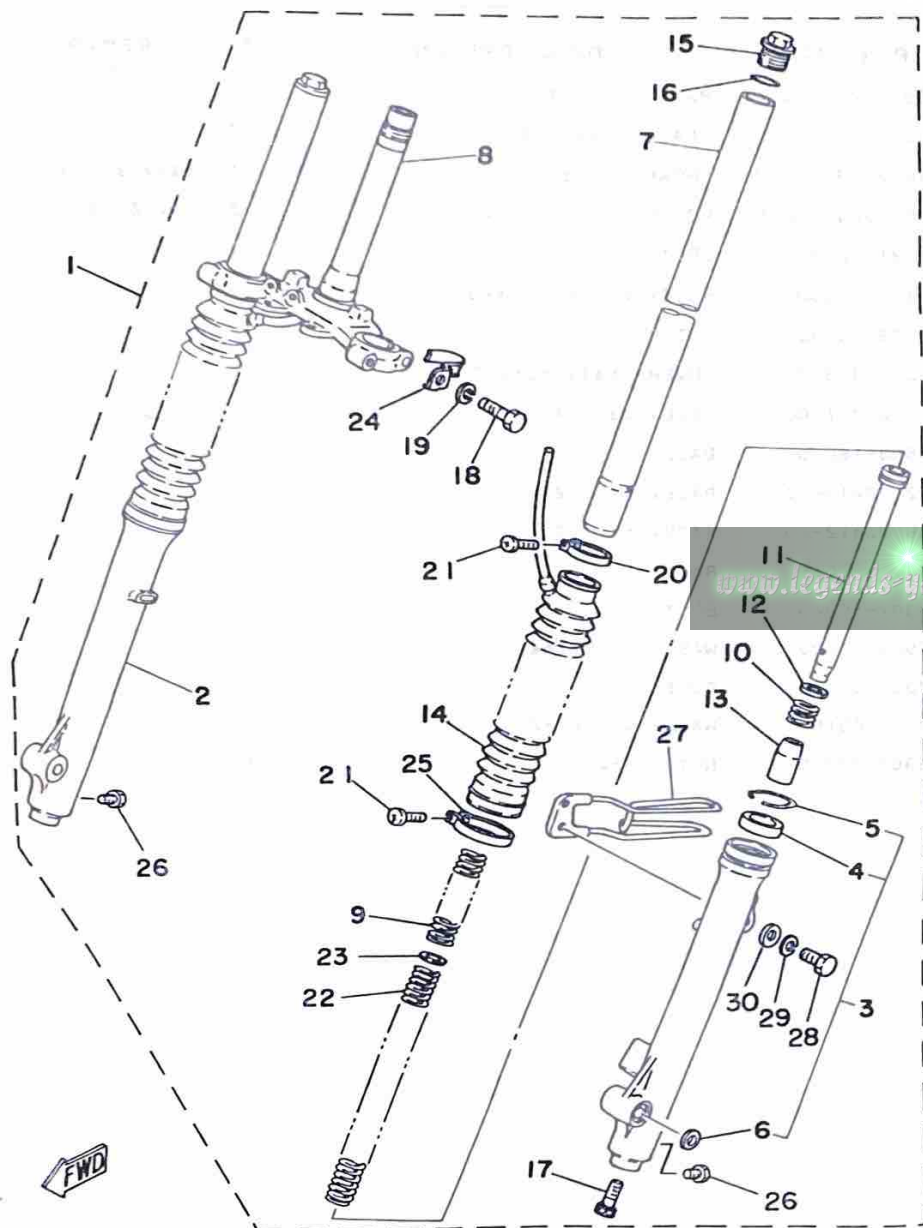
REF. NO.	PART NO.	DESCRIPTION	Q'TY	REMARKS
1	156-23411-00	RACE, ball 1	1	
2	164-23462-00	SEAL, steering	1	
3	3V6-23435-00-33	CROWN, handle	1	yamaha black
4	1E6-23441-00-98	HOLDER, handle upper	2	low gloss black
5	95821-08035	BOLT, flange	4	
6	90105-14060	BOLT, washer based	1	
7	90179-25033	NUT	1	
8	122-23416-00	COVER, ball race 2	1	
9	122-23411-00	RACE, ball 1	1	
10	93503-16010	BALL	22	
11	122-23412-00	RACE, ball 2	1	
12	156-23412-00	RACE, ball 2	1	
13	93501-04011	BALL	19	
14	97301-10040	BOLT	2	
15	92901-10100	WASHER, spring	2	
16	97301-08045	BOLT	1	
17	92901-08100	WASHER, spring	1	
18	95301-08800	NUT, crown	1	



4M3700-0210

C12

FIG. 22 FRONT FORK

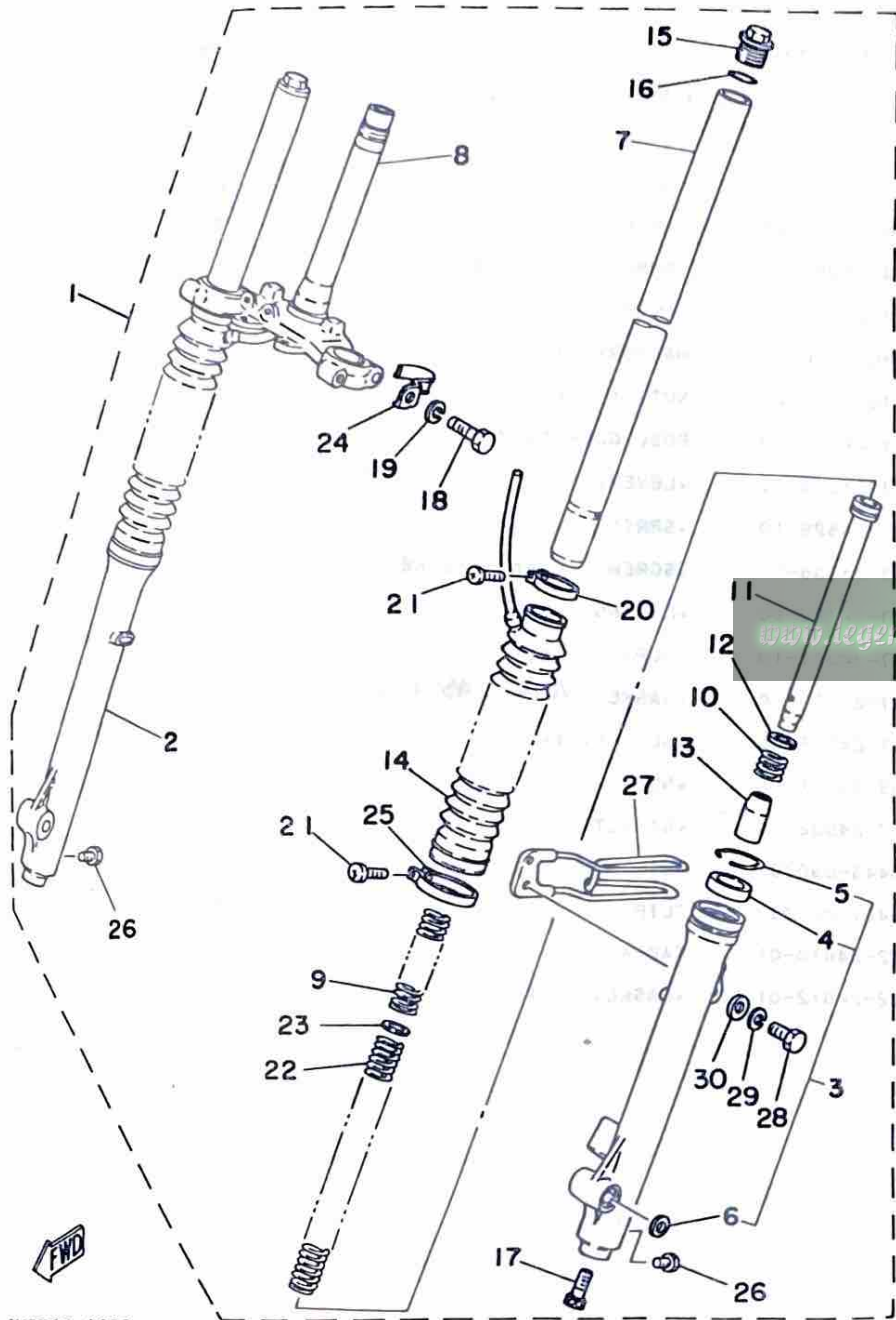


4M3700-0220

REF. NO.	PART NO.	DESCRIPTION	Q'TY	REMARKS
1	4M3-23101-00	FRONT FORK ASSY	1	
2	3V6-23140-00-35	•FORK UNIT ASSY 2	1	silver
3	3V6-23130-00-35	•FORK UNIT ASSY	1	silver
4	1E7-23145-00	••OIL SEAL	2	
5	1E7-23156-00	••CLIP, oil seal	2	
6	462-23392-02	••WASHER, sPecial	2	
7	4M3-23110-00	•INNER TUBE COMP.1	2	
8	4M3-23340-00-90	•UNDER BRACKET COMP.	1	uni chrome (black)
9	4M3-23351-00	•SPRING	2	
10	4M3-23151-00	•SPRING, rebound	2	
11	4M3-23143-00	•SEAT, sPring lower	2	
12	1E8-23157-00	•RING, piston	2	
13	1L9-23166-00	•TAPER, spindle	2	
14	3V6-23191-00	•BOOT	2	
15	1E7-23111-00	•BOLT, cap	2	
16	1E7-23114-00	•GASKET	2	
17	3M7-23181-00	•BOLT, hexagon socket head	2	
18	451-23346-01	•BOLT 1	2	
19	92901-10100	•WASHER, sPring	2	
20	3V6-23192-01	•BAND	2	
21	98506-04020	•SCREW, Pan head	4	
22	4M3-23141-00	•SPRING, front fork	2	
23	4M3-23142-00	•SEAT, sPring upper	2	
24	3V6-23317-00	•HOLDER, cable	1	
25	3V6-23489-01	•BAND	2	
26	2A6-23119-00	•PLUG, drain	2	
27	3V6-23318-00	HOLDER, cable 1	1	
28	97301-06020	BOLT	1	

C13

FIG. 22 FRONT FORK

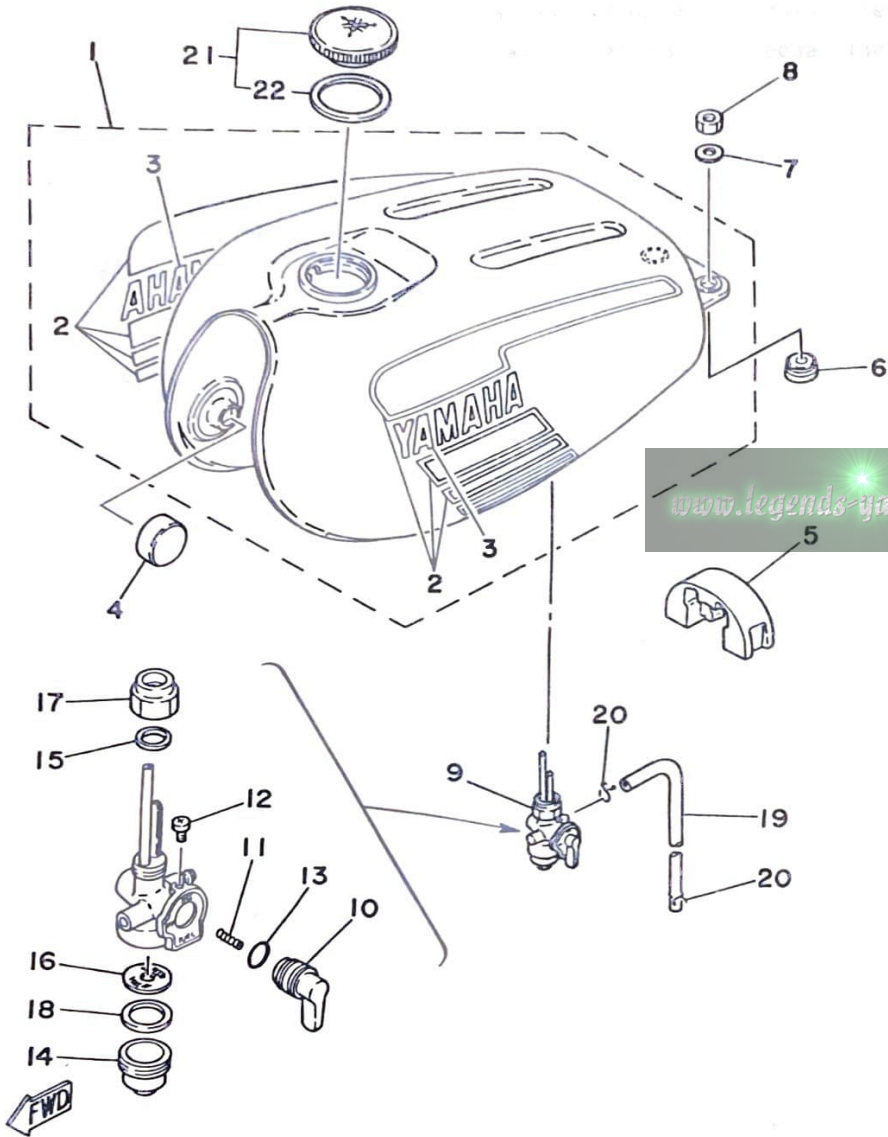


REF. NO.	PART NO.	DESCRIPTION	Q'TY	REMARKS
29	92901-06100	WASHER, sPring	1	
30	92901-06600	WASHER, Plate	1	

4M3700-0220

C14

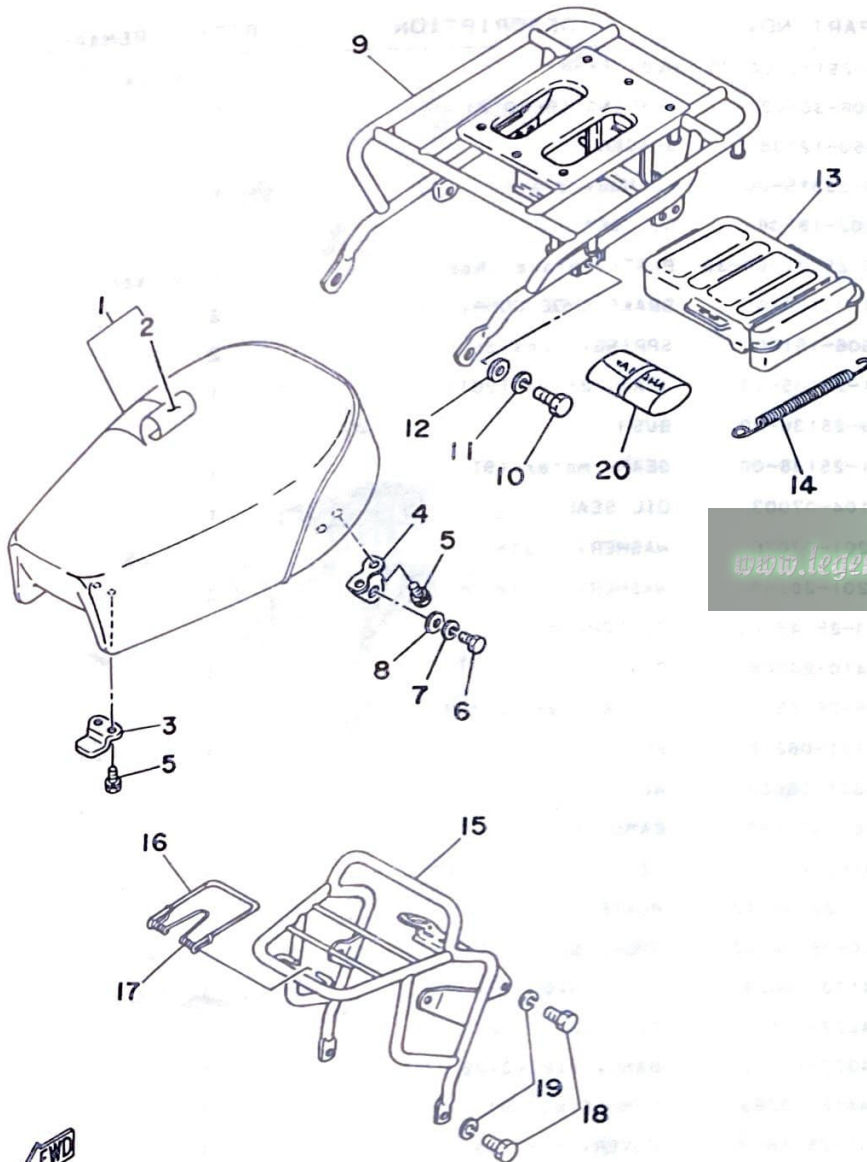
FIG. 23 FUEL TANK



REF. NO.	PART NO.	DESCRIPTION	Q'TY	REMARKS
1	3V6-24110-00-02	FUEL TANK COMP.	1	competition yellow
2	4M3-24240-00	•GRAPHIC SET	1	
3	2J0-24161-20	•EMBLEM 1	2	
4	156-24181-00	DAMPER, locating 1	2	
5	353-24182-00	DAMPER, locating 2	1	
6	1A8-24181-00	DAMPER, locating 1	2	
7	90201-06069	WASHER, Plate	2	
8	95701-06100	NUT, flange	2	
9	357-24500-10	FUEL COCK ASSY 1	1	
10	357-24524-10	•LEVER, cock	1	
11	357-24529-10	•SPRING	1	
12	2N3-24535-00	•SCREW, lever fitting	1	
13	2N3-24528-00	•O-RING	1	
14	357-24521-10	•CUP, filter	1	
15	357-24522-10	•GASKET <b>A34 24532 00</b>	1	
16	357-24515-10	•NET, filter 2	1	
17	2N3-24531-00	•NUT	1	
18	357-24532-10	•GASKET	1	
19	90445-09079	HOSE	1	
20	90467-08003	CLIP	2	
21	122-24610-01	CAP ASSY	1	
22	122-24612-01	•GASKET, cap	1	



FIG. 24 SEAT



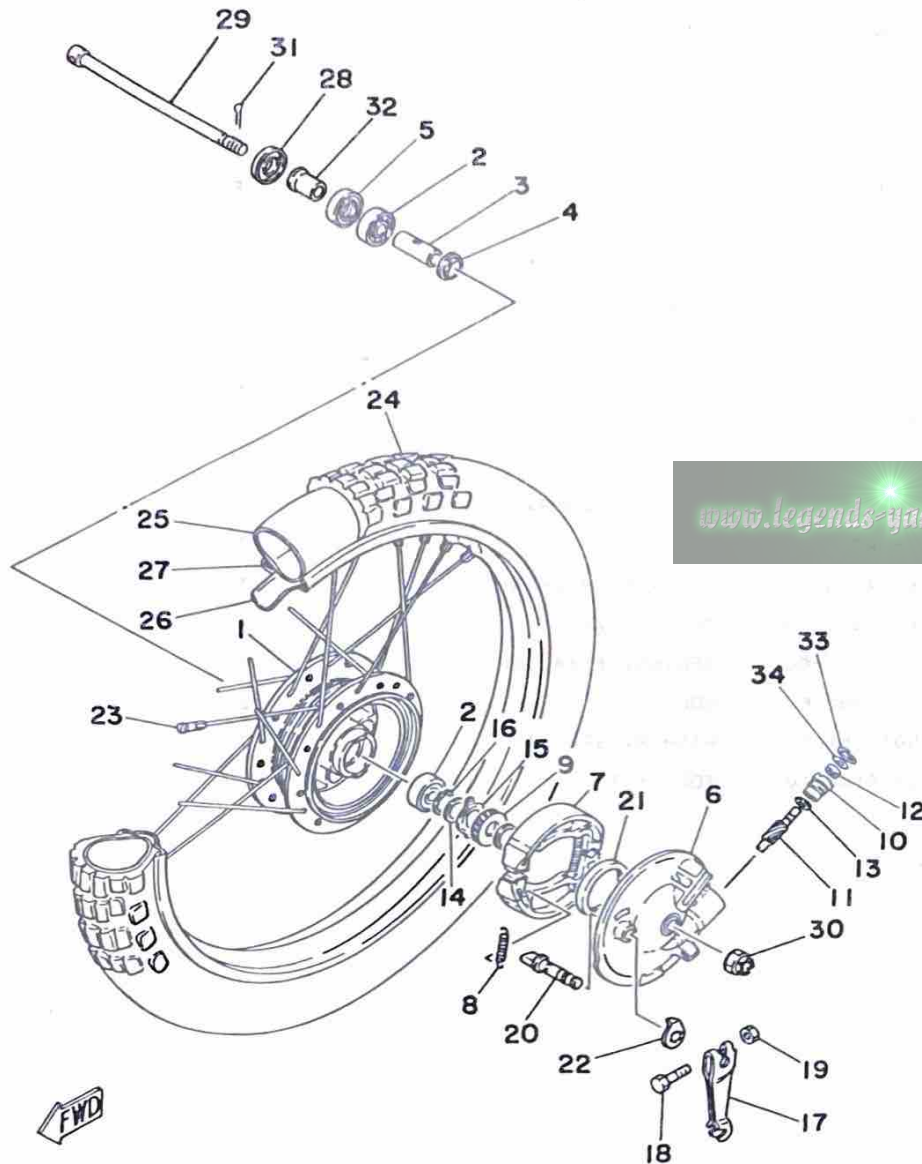
REF. NO.	PART NO.	DESCRIPTION	Q'TY	REMARKS
1	3V6-W2471-01	SINGLE SEAT ASSY	1	
2	3V6-24711-00	COVER, single seat	1	
3	2Y0-24748-00	BRACKET, seat	1	
4	2A6-24738-00	BRACKET, seat	2	
5	90101-06304	BOLT	6	
6	97301-08025	BOLT	2	
7	92901-08100	WASHER, sPrinG	2	
8	92901-08600	WASHER, Plate	2	
9	3V6-24810-00-93	CARRIER ASSY	1	chrome-plated
10	97301-08025	BOLT	2	
11	92901-08100	WASHER, sPrinG	2	
12	92901-08600	WASHER, Plate	2	
13	3V6-21107-01	TOOL BOX COMP.	1	
14	3V6-24758-01	SPRING	1	
15	3V6-24860-01-98	FRONT CARRIER ASSY	1	
16	3V6-24862-00	CLAMP, carrier	1	
17	296-24861-00	SPRING, front carrier	1	
18	97301-08016	BOLT	2	
19	92901-08100	WASHER, sPrinG	2	
20	3V6-28100-10	TOOL KIT	1	

www.legends-gamcha-endless.com



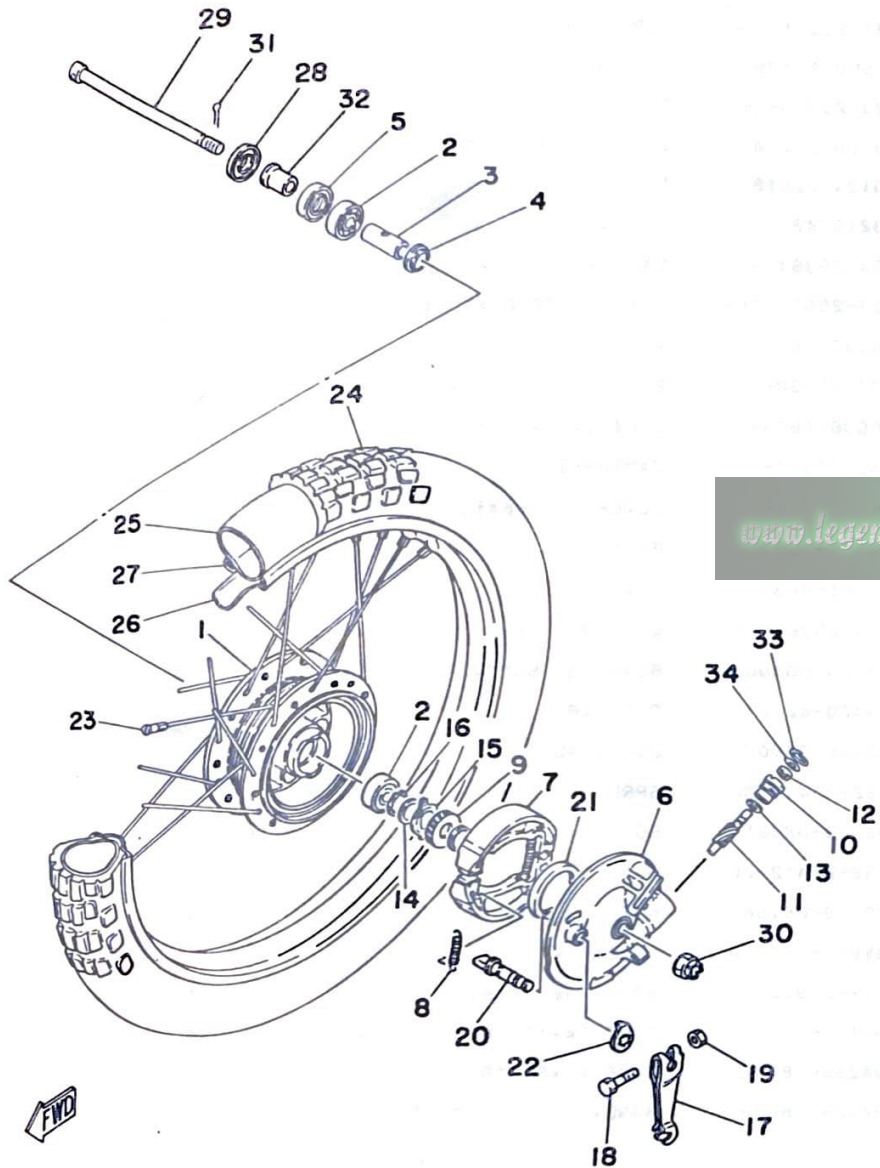
FIG. 25 FRONT WHEEL

REF. NO.	PART NO.	DESCRIPTION	Q'TY	REMARKS
1	248-25111-00-35	HUB, front	1	silver
2	93306-30103	BEARING (B6301Z)	2	
3	90560-12138	SPACER	1	
4	109-25315-00	FLANGE, sPacer	1	
5	93102-18008	OIL SEAL	1	
6	3V6-25121-00-35	PLATE, brake shoe	1	silver
7	437-25130-00	BRAKE SHOE COMP.	2	
8	90506-16150	SPRING, tension	2	
9	301-25135-00	GEAR, drive (26T)	1	
10	109-25136-00	BUSH	1	
11	301-25138-00	GEAR, meter (9T)	1	
12	93104-07003	OIL SEAL	1	
13	90201-07076	WASHER, Plate	1	
14	90201-20269	WASHER, Plate	2	
15	183-25149-00	CLUTCH, meter	1	
16	93410-20009	CIRCLIP	1	
17	558-25155-00	LEVER, camshaft 1	1	
18	90101-06278	BOLT	1	
19	95301-06600	NUT	1	
20	3Y6-25351-00	CAMSHAFT	1	
21	93105-47007	OIL SEAL	1	
22	3E1-2513A-10	PLATE, indicator	1	
23	3V6-25104-00	SPOKE SET, front	1	
24	94130-19629	TIRE (3.00-19)	1	
25	94227-19161	TUBE (2.75-19)	1	
26	94327-19111	BAND, rim (2.75-19)	1	
27	94416-19263	RIM (1.60-19)	1	
28	2K5-25118-00	COVER, hub dust	1	



FWD

FIG. 25 FRONT WHEEL



REF. NO.	PART NO.	DESCRIPTION	Q'TY	REMARKS
29	353-25381-00	AXLE, wheel	1	
30	90171-10004	NUT, castle	1	
31	91401-20020	PIN, cotter	1	
32	90387-12265	COLLAR	1	
33	102-25137-00	RING, stop	1	
34	93210-14104	O-RING	1	

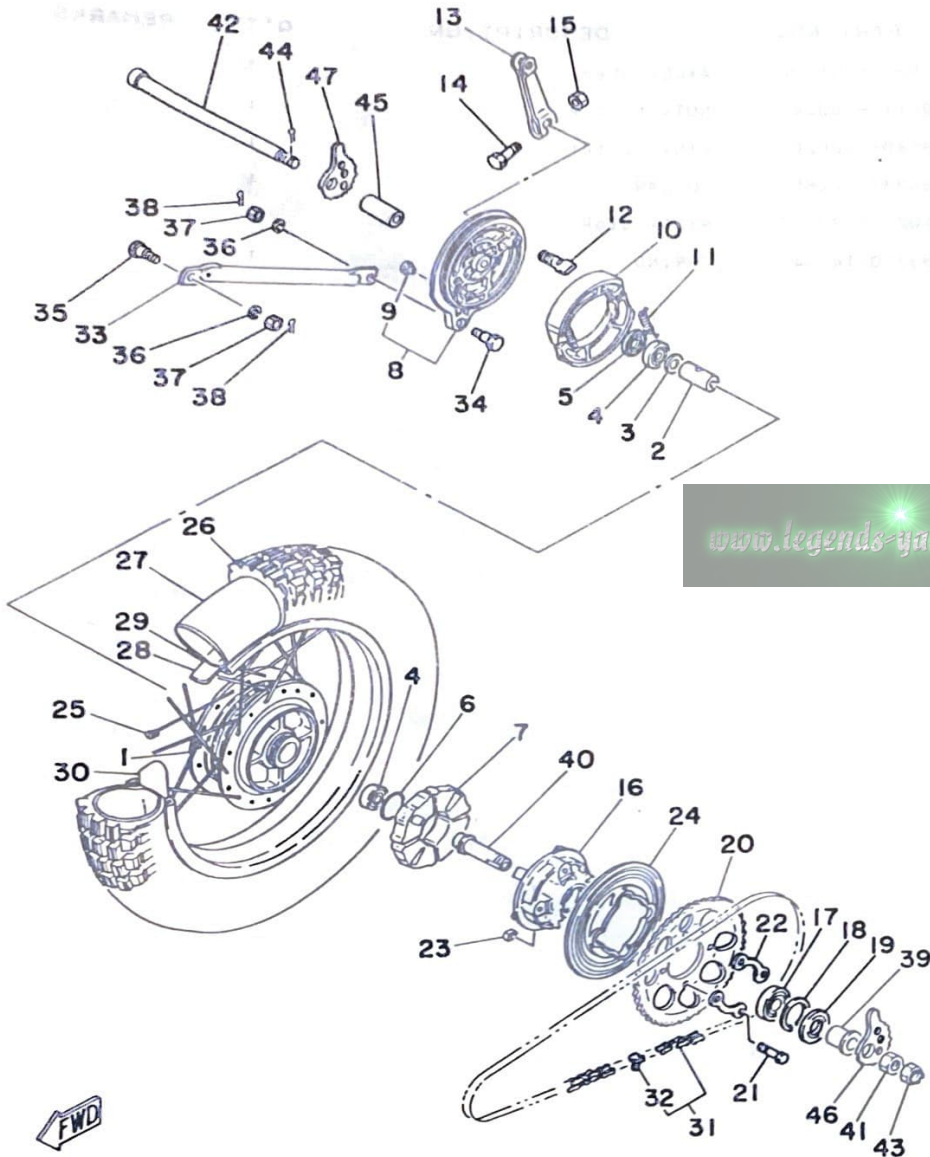


4M3700-0250

D4

FIG. 26 REAR WHEEL

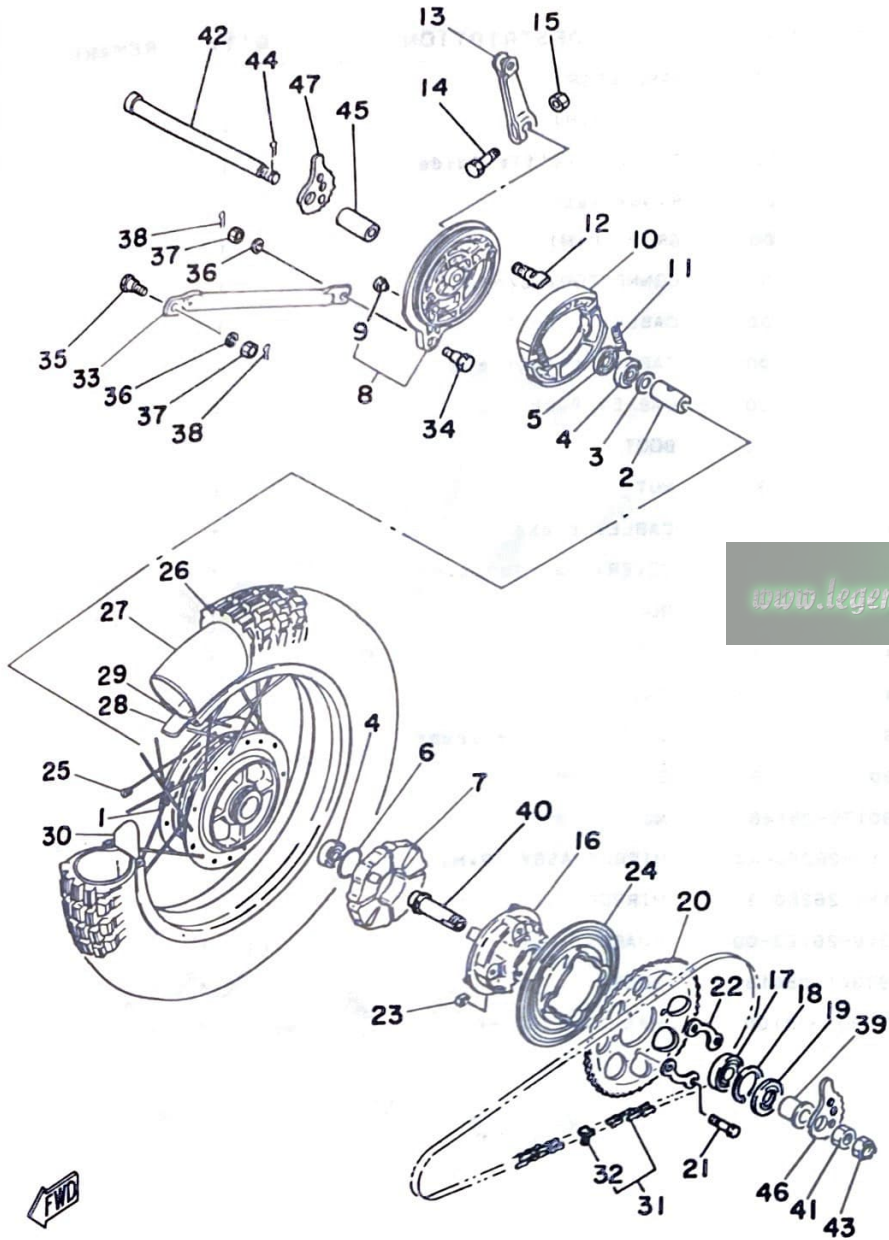
REF. NO.	PART NO.	DESCRIPTION	Q'TY	REMARKS
1	391-25311-00-35	HUB, rear	1	silver
2	90560-15136	SPACER	1	
3	183-25315-00	FLANGE, sPacer	1	
4	93306-20204	BEARING (B6202Z)	2	
5	93104-22018	OIL SEAL	1	
6	93210-42101	O-RING	1	
7	304-25364-01	DAMPER	4	
8	437-25026-10-35	BRAKE SHOE PLATE ASSY	1	silver
9	90480-10068	GROMMET	1	
10	437-25330-00	BRAKE SHOE COMP.	2	
11	90506-16036	SPRING, tension	2	
12	248-25351-00	CAMSHAFT	1	
13	127-25355-00	LEVER, camshaft	1	
14	90101-06278	BOLT	1	
15	95301-06600	NUT	1	
16	183-25366-01	CLUTCH, hub	1	
17	93306-00406	BEARING (B6004Z)	1	
18	93420-42007	CIRCLIP	1	
19	93106-26005	OIL SEAL	1	
20	482-25447-00	SPROCKET, driven (47T)	1	
21	90109-08361	BOLT	4	
22	482-25412-00	WASHER	2	
23	90179-08168	NUT	4	
24	3V6-25327-00	COVER, Plate	1	
25	3V6-25304-00	SPOKE SET, rear	1	
26	94141-18630	TIRE (4.10-18)	1	
27	94235-18022	TUBE (3.50-18)	1	
28	94325-18043	BAND, rim (2.50-18)	1	



4M3700-0260

D5

FIG. 26 REAR WHEEL



REF. NO.	PART NO.	DESCRIPTION	Q'TY	REMARKS
29	94418-18246	RIM (1.85-18)	1	
30	1T2-25394-00	SPACER, bead	1	
31	94580-14118	CHAIN (DID428HM-118L)	1	94580 3311B
32	94624-28001	JOINT, chain	1	
33	4M3-25371-00	BAR, tension	1	
34	90109-08063	BOLT	1	
35	90109-08368	BOLT	1	
36	92901-08100	WASHER, sPring	2	
37	95301-08700	NUT	2	
38	91401-20012	PIN, cotter	2	
39	90387-204A3	COLLAR	1	
40	3V6-25387-00	AXLE, sProcket	1	
41	90170-20224	NUT	1	
42	2A6-25381-00	AXLE, wheel	1	
43	90171-14020	NUT, castle	1	
44	91401-30030	PIN, cotter	1	
45	90387-154A2	COLLAR	1	
46	3V6-25388-00	PULLER, chain 1	1	
47	3V6-25389-00	PULLER, chain 2	1	

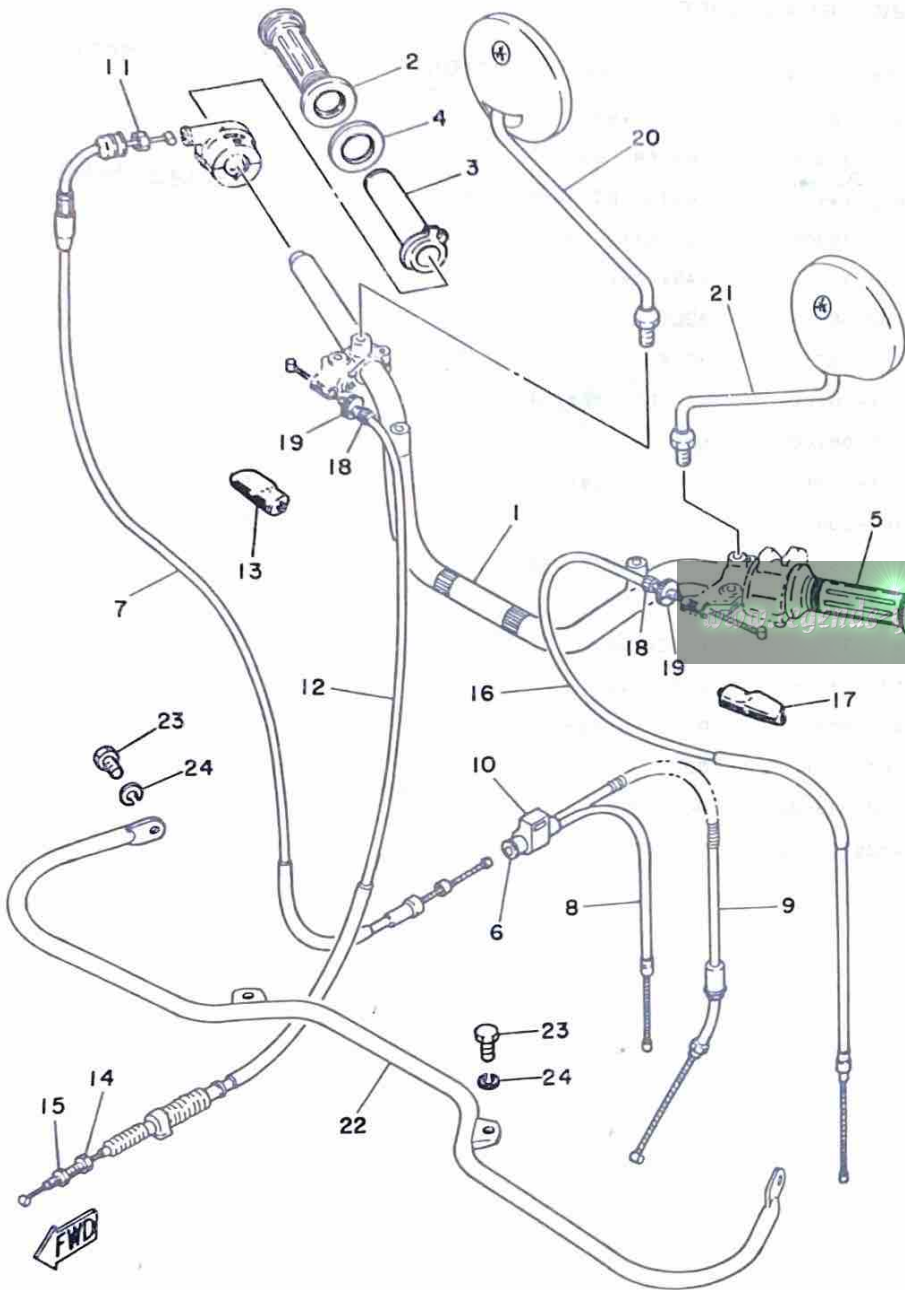


4M3700-0260

D6

FIG. 27 HANDLEBAR-CABLE

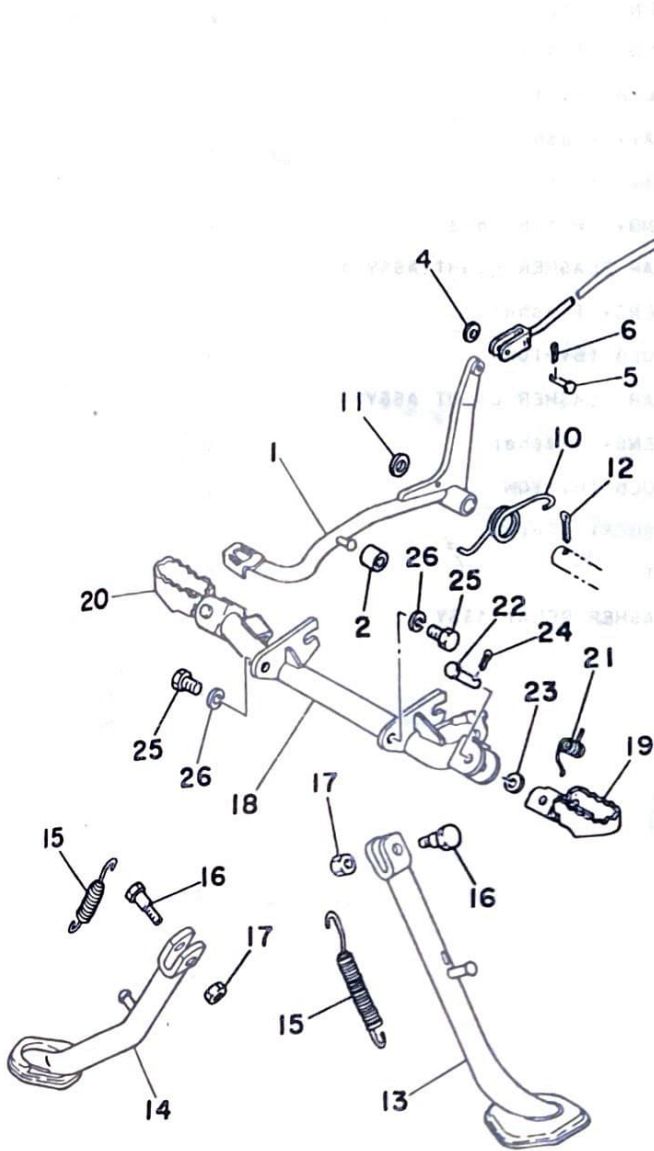
REF. NO.	PART NO.	DESCRIPTION	Q'TY	REMARKS
1	4M3-26111-00	HANDLEBAR	1	
2	3V6-26242-00	GRIP (R.H)	1	
3	434-26243-00	TUBE, throttle Guide	1	
4	1M1-26249-01	RING, leaf	1	
5	3V6-26241-00	GRIP (L.H)	1	
6	214-26261-00	CONNECTOR, cable	1	
7	3V6-26311-00	CABLE, throttle 1	1	
8	4M3-26312-00	CABLE, throttle 2	1	
9	4M3-26321-00	CABLE, Pump	1	
10	4G3-26339-00	BOOT	1	
11	90170-10038	NUT	1	
12	3V6-26341-00	CABLE, brake	1	
13	382-26372-01	COVER, handle lever	1	
14	90123-06010	BOLT	1	
15	90179-06143	NUT	1	
16	4M3-26335-00	CABLE, clutch	1	
17	382-26372-01	COVER, handle lever	1	
18	90123-08046	BOLT	2	
19	90179-08148	NUT	2	
20	1Y1-26290-40	MIRROR ASSY (R.H)	1	
21	1Y1-26290-30	MIRROR ASSY (L.H)	1	
22	3V6-26123-00	GUARD, lever	1	
23	97301-08016	BOLT	4	
24	92901-08100	WASHER, sPring	4	



4M3700-0270

D7

FIG. 28 STAND.FOOTREST



REF. NO.	PART NO.	DESCRIPTION	Q'TY	REMARKS
1	3V6-27211-00-33	PEDAL, brake	1	yamaha black
2	90387-064A4	COLLAR	1	
3	4M3-27231-00	ROD, brake	1	
4	92901-06200	WASHER, Plain	1	
5	90240-06006	PIN, clevis	1	
6	91401-25012	PIN, cotter	1	
7	90501-10245	SPRING, compression	1	
8	90249-12008	PIN	1	
9	90175-06013	NUT, wing	1	
10	90508-35442	SPRING, torsion	1	
11	90201-15564	WASHER, Plate (1.5T)	1	
12	91401-30022	PIN, cotter	1	
13	3V6-27311-00-33	STAND, side	1	yamaha black
14	3V6-27311-10-33	STAND, side	1	yamaha black
15	90506-28100	SPRING, tension	2	
16	90109-10473	BOLT	2	
17	90185-10037	NUT, self-locking	2	
18	3V6-27451-00-33	FOOTREST	1	yamaha black
19	3R1-27411-00	FOOTREST 1	1	uni chrome (black)
20	3R1-27421-00	FOOTREST 2	1	uni chrome (black)
21	90508-20023	SPRING, torsion	2	
22	91701-08038	PIN, clevis	2	
23	92901-08600	WASHER, Plate	2	
24	91401-25012	PIN, cotter	2	
25	97301-10016	BOLT	2	
26	92901-10100	WASHER, spring	2	



4M3700-0280

D8

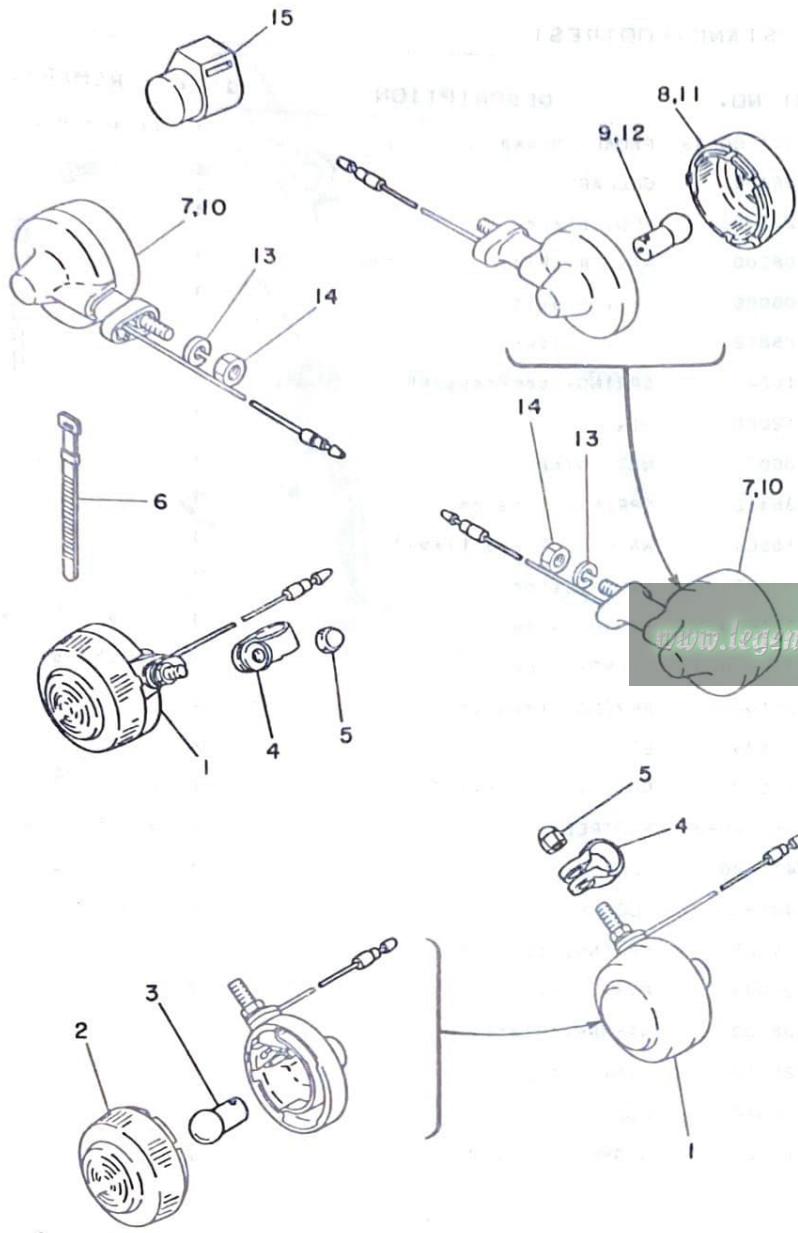


FIG. 29 FLASHER LIGHT

REF. NO.	PART NO.	DESCRIPTION	Q'TY	REMARKS
1	3T2-83310-10	FRONT FLASHER LIGHT ASSY 1	2	
2	3M7-83312-10	•LENS, flasher	1	
3	152-83311-10	•BULB (6V-10W)	1	
4	1M1-83318-00	STAY, flasher 1	2	
5	95303-08800	NUT, crown	2	
6	437-83936-00	BAND, switch cord	1	
7	3T2-83330-10	REAR FLASHER LIGHT ASSY 1	1	
8	3M7-83312-10	•LENS, flasher	1	
9	152-83311-10	•BULB (6V-10W)	1	
10	4G3-83340-10	REAR FLASHER LIGHT ASSY	1	
11	3M7-83312-10	•LENS, flasher	1	
12	152-83311-10	•BULB (6V-10W)	1	
13	92901-08100	WASHER, sPring	2	
14	95301-08600	NUT	2	
15	3E1-83350-11	FLASHER RELAY ASSY	1	



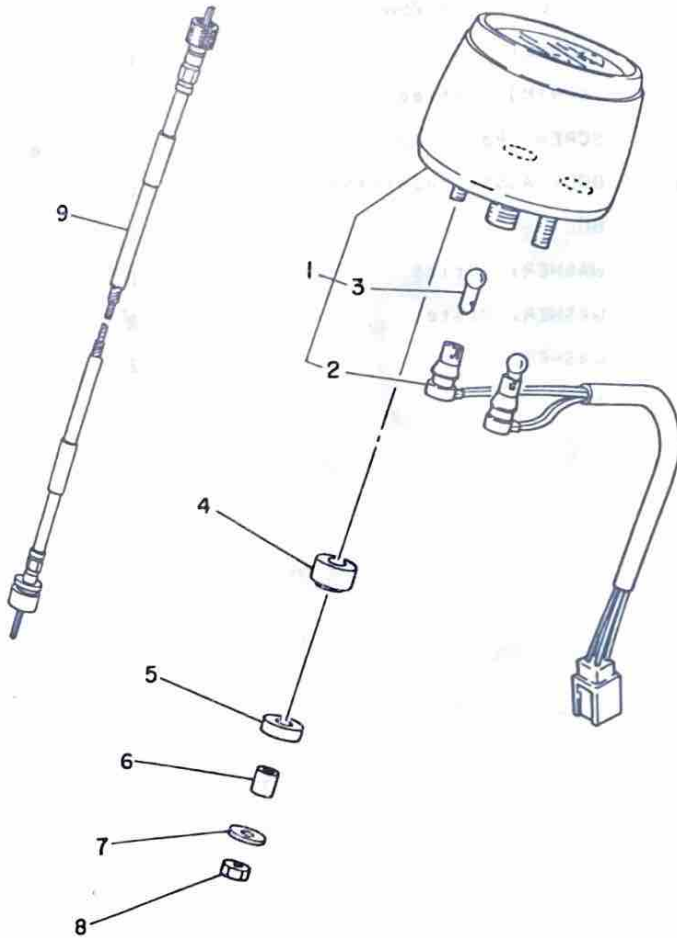
4M3700-0290

D9



FIG. 30 METER

REF. NO.	PART NO.	DESCRIPTION	Q'TY	REMARKS
1	3F4-83510-F0	SPEEDOMETER ASSY	1	
2	2W0-83520-00	•SOCKET ASSY	1	
3	122-83516-10	•BULB (6V-3W)	2	
4	1M3-83513-00	DAMPER	2	
5	355-83526-00	DAMPER 2	2	
6	355-83522-00	COLLAR	2	
7	355-83524-00	WASHER, sPecial	2	
8	95301-06600	NUT	2	
9	438-83550-01	SPEEDOMETER CABLE ASSY	1	

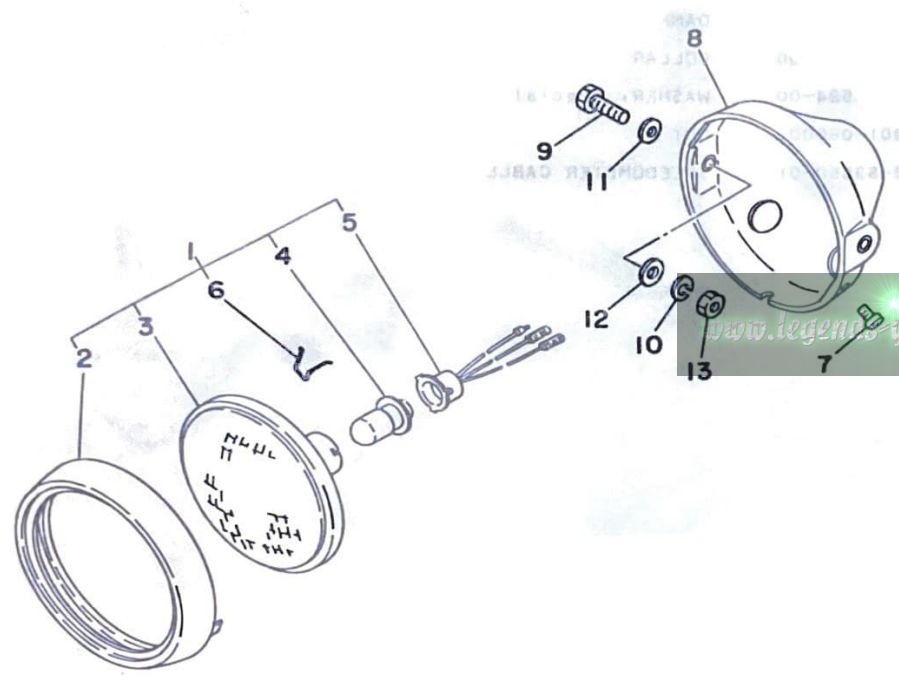


[www.legends-yamaha-enduros.com](http://www.legends-yamaha-enduros.com)



FIG. 31 HEADLIGHT

REF. NO.	PART NO.	DESCRIPTION	Q'TY	REMARKS
1	3M7-84110-00	HEADLIGHT UNIT ASSY	1	
2	202-84315-00	•RIM, headlight	1	
3	195-84320-00	•LENS ASSY	1	
4	206-84114-60	•BULB (6V-25/25W)	1	
5	317-84112-30	•SOCKET	1	
6	195-84324-00	•SPRING, reflector	3	
7	98501-05008	SCREW, Pan head	1	
8	3M7-84130-00	BODY ASSY, headlight	1	
9	97301-08025	BOLT	2	
10	92901-08100	WASHER, sPring	2	
11	92901-08600	WASHER, plate	2	
12	92902-08200	WASHER	2	
13	95301-08600	NUT	2	

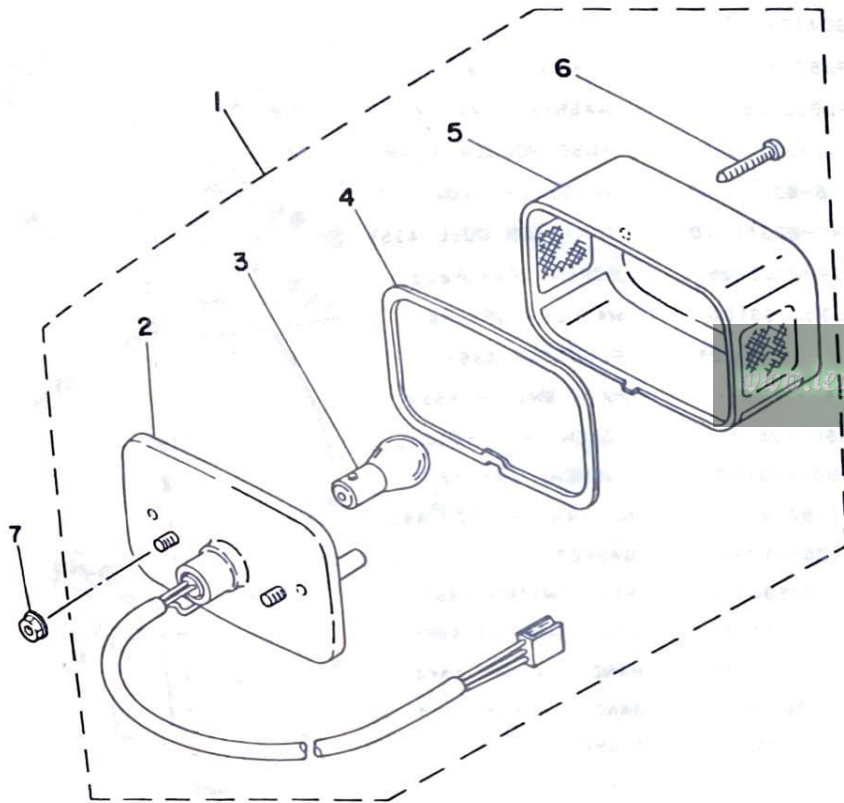


4M3700-0310

D11

FIG. 32 TAILLIGHT

REF. NO.	PART NO.	DESCRIPTION	Q'TY	REMARKS
1	3T2-84510-00	TAILLIGHT UNIT ASSY	1	
2	3T2-84520-00	•TAILLIGHT BASE ASSY	1	
3	122-84514-30	•BULB (6V-17/5.3W)	1	
4	1K8-84523-00	•GASKET, lens	1	
5	1K8-84521-00	•LENS, taillight	1	
6	2E9-84524-00	•SCREW, lens fitting	2	
7	95701-06100	NUT, flange	2	



4M3700-0320

D12

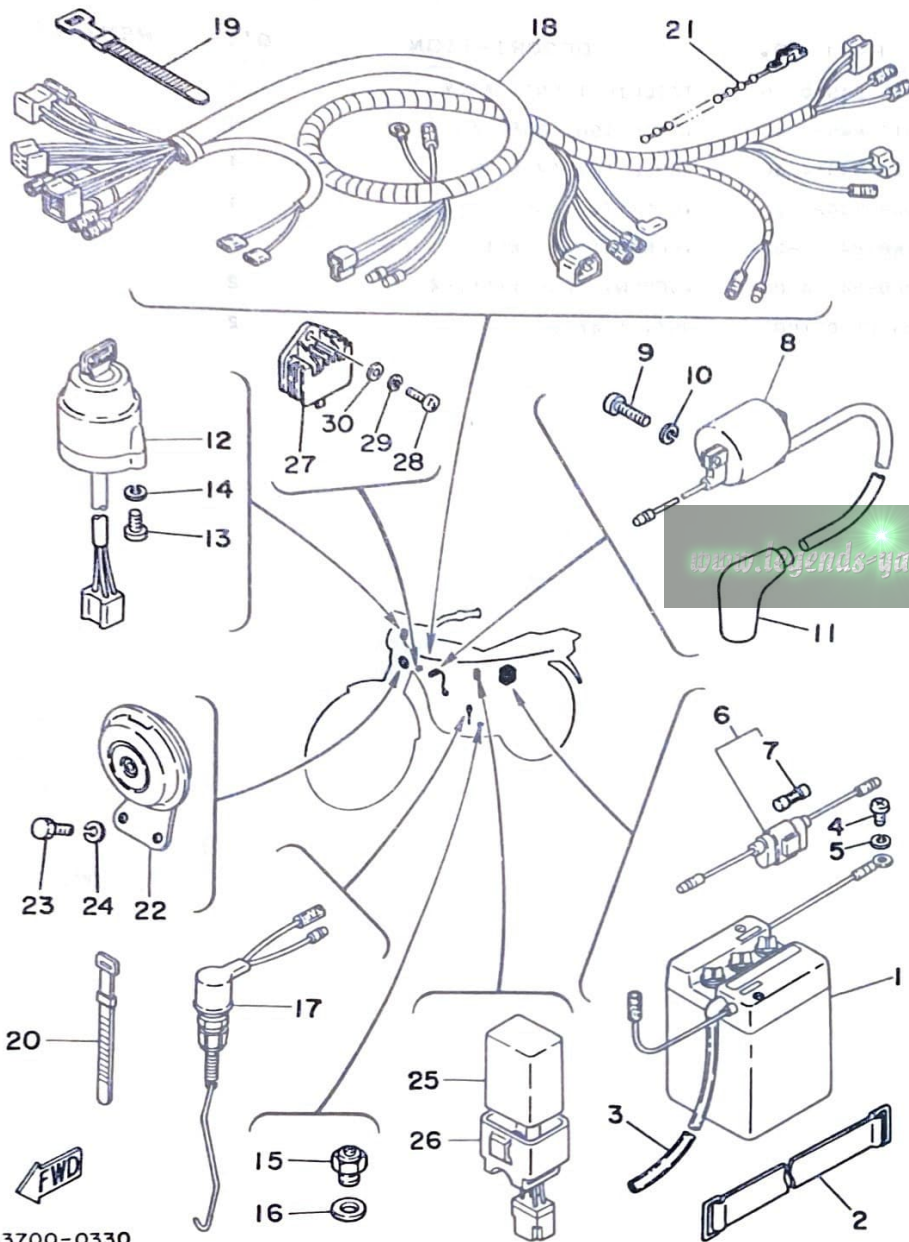


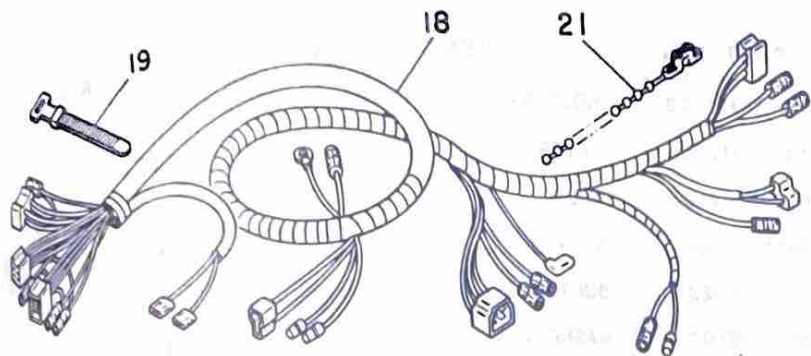
FIG. 33 ELECTRICAL 1

REF. NO.	PART NO.	DESCRIPTION	Q'TY	REMARKS
1	120-82110-12	BATTERY ASSY (G.S. 6N4-2A-2)	1	UR
	120-82110-29	BATTERY ASSY (6N4-2A-2)	1	UR
2	3V6-82131-00	BAND, battery	1	
3	90445-08338	HOSE	1	
4	92501-06012	SCREW, Pan head	1	
5	92902-06100	WASHER, sPrinG	1	
6	353-82150-00	FUSE HOLDER ASSY	1	
7	116-82151-00	+FUSE (6V-10A)	1	
8	2K7-82310-10	IGNITION COIL ASSY	1	
9	92502-06025	SCREW, Pan head	2	
10	92902-06100	WASHER, sPrinG	2	
11	437-82370-21	PLUG CAP ASSY	1	
12	2F5-82508-50	MAIN SWITCH ASSY	1	
13	98501-05010	SCREW, Pan head	2	
14	92901-05100	WASHER, sPrinG	2	
15	136-82540-00	NEUTRAL SWITCH ASSY	1	
16	90430-11034	GASKET	1	
17	3V6-82530-00	STOP SWITCH ASSY	1	
18	4M3-82590-20	WIRE HARNESS ASSY	1	
19	437-83936-00	BAND, switch cord	1	
20	256-83936-00	BAND, switch cord	1	
21	90464-20031	CLAMP	2	
22	2A7-83371-10	HORN	1	
23	97301-06012	BOLT	2	
24	92901-06100	WASHER, sPrinG	2	
25	482-85540-10	C.D.I. UNIT ASSY	1	
26	2A7-85546-00	BAND	1	
27	4F4-81910-60	VOLTAGE REGULATOR ASSY	1	

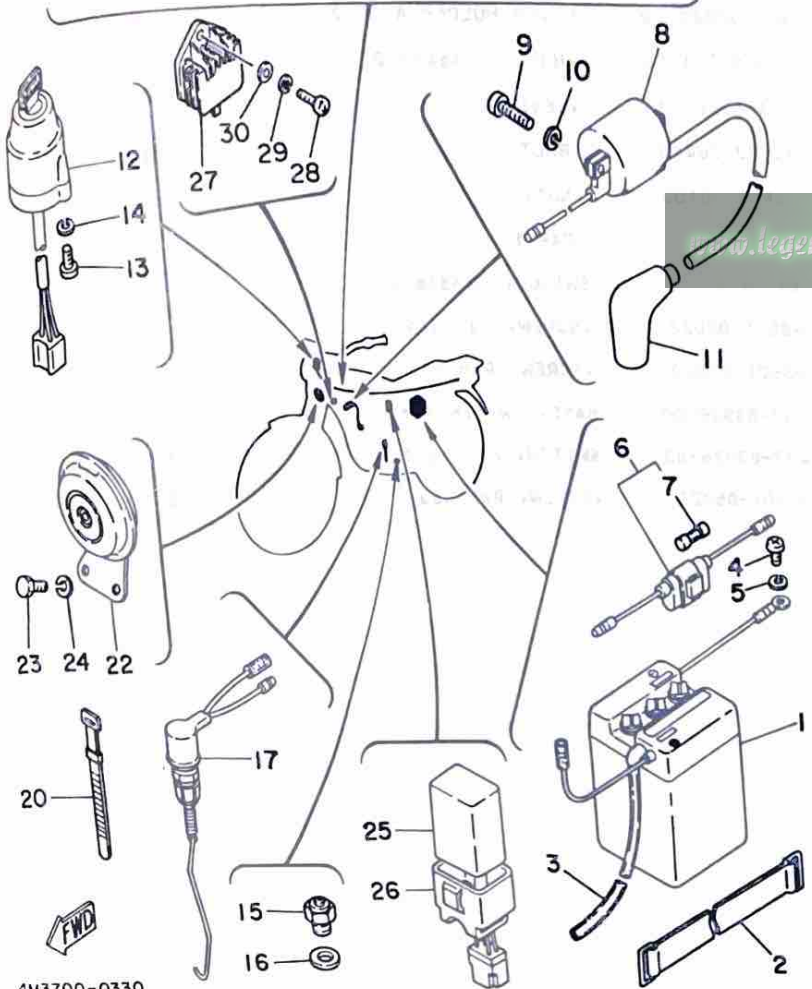
4M3700-0330

D13

FIG. 33 ELECTRICAL 1



REF. NO.	PART NO.	DESCRIPTION	Q'TY	REMARKS
28	92502-06016	SCREW, Pan head	1	
29	92902-06100	WASHER, sPring	1	
30	92902-06600	WASHER	1	

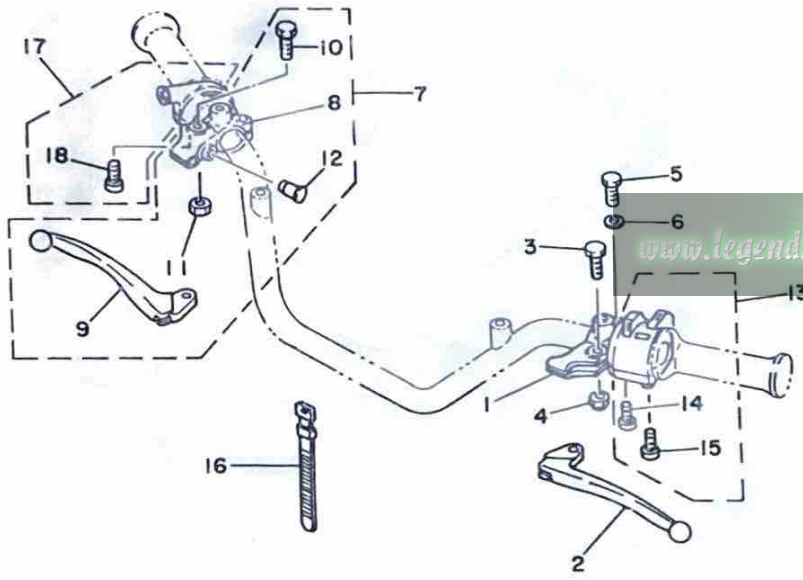


[www.legends-yamaha-enduros.com](http://www.legends-yamaha-enduros.com)

4M3700-0330

D14

FIG. 34 HANDLE SWITCH-LEVER



REF. NO.	PART NO.	DESCRIPTION	Q'TY	REMARKS
1	3V6-82911-00	HOLDER, lever 1	1	
2	214-83912-00	LEVER 1	1	
3	90109-06410	BOLT	1	
4	95601-06100	NUT, u	1	
5	97301-06022	BOLT	1	
6	92901-06100	WASHER, sPring	1	
7	3V6-82920-00	LEVER HOLDER ASSY 2	1	
8	3V6-82921-30	•HOLDER, lever 2	1	
9	233-83922-30	•LEVER 2	1	
10	90109-06410	•BOLT	1	
11	95601-06100	•NUT, u	1	
12	503-83956-10	•CAP 1	1	
13	4M3-83972-00	SWITCH, handle 4	1	
14	98501-05022	•SCREW, Pan head	1	
15	98501-05030	•SCREW, Pan head	1	
16	437-83936-00	BAND, switch cord	1	
17	437-83976-03	SWITCH, handle 1	1	
18	98501-05022	•SCREW, Pan head	2	



4M3700-0340

D15

# REPAIR KIT

[www.legends-yamaha-enduros.com](http://www.legends-yamaha-enduros.com)

FIG. 35 REPAIR KIT

REF. NO.	PART NO.	DESCRIPTION	Q'TY	REMARKS
1	4M3-11630-00	PISTON ASSY (STD)	1	
2	4M3-11631-00-96	•PISTON (STD)	1	UR
	4M3-11631-00-98	•PISTON (STD)	1	UR
3	4M3-11601-00	•PISTON RING SET (STD)	1	
4	251-11633-00	•PIN, Piston	1	
5	93450-17044	•CIRCLIP	2	
6	4M3-11630-10	PISTON ASSY (1ST O/S)	1	
7	4M3-11635-00	•PISTON (1ST O/S 0.25MM)	1	
8	4M3-11601-10	•PISTON RING SET (1ST O/S)	1	
9	251-11633-00	•PIN, Piston	1	
10	93450-17044	•CIRCLIP	2	
11	4M3-11630-20	PISTON ASSY (2ND O/S)	1	
12	4M3-11636-00	•PISTON (2ND O/S 0.50MM)	1	
13	4M3-11601-20	•PISTON RING SET (2ND O/S)	1	
14	251-11633-00	•PIN, Piston	1	
15	93450-17044	•CIRCLIP	2	
16	4M3-11630-30	PISTON ASSY (3RD O/S)	1	
17	4M3-11637-00	•PISTON (3RD O/S 0.75MM)	1	
18	4M3-11601-30	•PISTON RING SET (3RD O/S)	1	
19	251-11633-00	•PIN, Piston	1	
20	93450-17044	•CIRCLIP	2	
21	4M3-11630-40	PISTON ASSY (4TH O/S)	1	
22	4M3-11638-00	•PISTON (4TH O/S 1.00MM)	1	
23	4M3-11601-40	•PISTON RING SET (4TH O/S)	1	
24	251-11633-00	•PIN, Piston	1	
25	93450-17044	•CIRCLIP	2	
26	2N5-11650-00	CONNECTING ROD ASSY	1	
27	2N4-11651-00	•ROD, connectinē	1	

www.legends-yamaha-enduros.com



# FIG. 35 REPAIR KIT

REF. NO.	PART NO.	DESCRIPTION	Q'TY	REMARKS
28	248-11681-01	•PIN, crank 1	1	
29	90209-22071	•WASHER	2	
30	93310-42231	•BEARING, cylindrical	1	
31	93310-216E1	•BEARING, cylindrical	1	
32	4M3-W0001-00	GASKET KIT	1	
33	1W2-11181-10	•GASKET, cylinder head 1	1	
34	3M5-11351-01	•GASKET, cylinder	1	
35	93210-18023	•O-RING	1	
36	90430-04004	•GASKET	1	
37	126-13116-00	•GASKET, Pump case	1	
38	304-14184-00	•GASKET, float chamber	1	
39	314-13621-02	•GASKET, valve seat	2	
40	3V6-14416-00	•GASKET, air cleaner	1	
41	152-14613-00	•GASKET, exhaust Pipe	1	
42	90430-12038	•GASKET	1	
43	314-15455-00	•GASKET, crankcase cover	1	
44	315-15451-02	•GASKET, crankcase cover	1	
45	444-15456-00	•GASKET, oil Pump cover 1	1	
46	137-15353-00	•GASKET, drain	1	
47	4M3-W0003-00	OIL SEAL KIT	1	
48	93102-25061	•OIL SEAL	1	
49	93103-28011	•OIL SEAL	1	
50	93101-10002	•OIL SEAL	1	
51	93104-20017	•OIL SEAL	1	
52	93109-05022	•OIL SEAL	1	
53	93104-11028	•OIL SEAL	1	
54	93102-26042	•OIL SEAL	1	
55	93109-14005	•OIL SEAL	1	

[www.legends-yamaha-enduros.com](http://www.legends-yamaha-enduros.com)

# INDEX

[www.legends-yamaha-enduros.com](http://www.legends-yamaha-enduros.com)

NUMERICAL INDEX

PART NO.	REF. NO.	PART NO.	REF. NO.
4M3-W0001-00	35-32	4M3-11638-00	2-15
4M3-W0003-00	35-47		35-22
3V6-W2471-01	24- 1	2N5-11650-00	35-26
4M3-11111-00	1- 1	2N4-11651-00	2- 4
2A6-11127-00	1-13		35-27
2A6-11128-00	1-14	248-11681-01	2- 5
2A6-11161-00	1-10		35-28
2A6-11162-00	1-11	4M3-13101-00	4- 1
579-11162-00	1-12	126-13116-00	4-16
1W2-11181-10	1- 2		35-37
	35-33	363-13133-01	4-13
4M3-11311-00	1- 4	137-13137-00-03	4-10
3M5-11351-01	1- 5	137-13137-00-05	4-10
	35-34	137-13137-00-10	4-10
482-11400-00	2- 1	137-13138-01	4- 9
482-11412-00	2- 2	278-13169-00	4- 3
248-11422-00	2- 3	525-13174-00	4-23
4M3-11601-00	2-18	275-13175-01	4-14
	35- 3	137-13176-00	4-19
4M3-11601-10	2-18	382-13178-60	4-20
	35- 8	402-13552-00	4- 6
4M3-11601-20	2-18	525-13565-01	5- 6
	35-13	345-13610-10	5- 1
4M3-11601-30	2-18	1A0-13613-00	5- 2
	35-18	345-13616-70	5- 3
4M3-11601-40	2-18	314-13621-02	5- 5
	35-23		35-39
4M3-11630-00	35- 1	4M3-14101-00	6- 1
4M3-11630-10	35- 6	314-14112-20	6-28
4M3-11630-20	35-11	500-14115-00	6-20
4M3-11630-30	35-16	166-14116-13	6- 8
4M3-11630-40	35-21	493-14122-00	6-14
4M3-11631-00-96	2-15	174-14123-00	6-27
	35- 2	2A6-14126-00	6-33
4M3-11631-00-98	2-15	248-14131-00	6-30
		246-14132-00	6-29
		493-14133-00	6-13
251-11633-00	2-16	174-14134-00	6-26
	35- 4	156-14135-00	6-31
	35- 9	164-14137-00	6-34
	35-14	363-14137-00	6-22
	35-19	353-14138-00	6-18
	35-24	558-14141-34	6- 9
4M3-11635-00	2-15	260-14142-27	6- 2
	35- 7	137-14143-27	6-21
4M3-11636-00	2-15	137-14143-29	6-21
	35-12	137-14143-31	6-21
4M3-11637-00	2-15	558-14147-00	6-19
	35-17		

NUMERICAL INDEX

PART NO.	REF. NO.	PART NO.	REF. NO.	PART NO.	REF. NO.	PART NO.	REF. NO.
444-15456-00	9-16	1T9-14155-00	6-23	367-18111-00-91	14-10	1E7-23114-00	
	35-45	2A6-14158-00	6-32	132-18113-01	14-11	2A6-23119-00	22-16
3V6-15610-00	10-15	127-14161-00	6-24	4M3-18140-00	13-18	3V6-23130-00-35	22-26
214-15612-01	10-16	1M1-14169-00	6-38	3M5-18511-00	13-11	3V6-23140-00-35	22- 2
214-15616-00	10-18	304-14171-00	6- 7	3M5-18512-00	13-12	4M3-23141-00	22-22
214-15618-00	10-20	132-14173-00	6-37	3M5-18513-00	13-13	4M3-23142-00	22-23
315-15641-00	10- 2	152-14174-00	6- 3	2A6-18531-00	13-14	4M3-23143-00	22-11
1E8-15651-00	10-12	539-14181-04	6-10	2A6-18535-00	13-15	1E7-23145-00	22- 4
132-15653-00-10	10-13	304-14184-00	6-12	4M3-18540-00	13- 1	4M3-23151-00	22-10
248-15654-00	10- 4		35-38	136-18542-00	13- 7	1E7-23156-00	22- 5
315-15660-00	10- 1	314-14185-00	6-11	382-18561-60	13- 4	1E8-23157-00	22-12
214-15664-00	10- 7	137-14186-01	6- 6	164-18579-00	13-10	1L9-23166-00	22-13
248-15668-00	10-10	1V0-14190-25	6- 5	164-18589-00	13- 8	3M7-23181-00	22-17
214-15676-00	10- 8	214-14195-00	6- 4	3V6-21107-01	24-13	3V6-23191-00	22-14
382-16111-62	11-14	183-14196-00	6-15	4M3-21110-00-33	15- 1	3V6-23192-01	22-20
4M3-16150-00	11- 2	509-14198-00	6-25	3V6-21473-01	15- 9	3V6-23317-00	22-24
174-16154-00	11- 4	304-14261-00	6-36	4M3-21511-00	16- 1	3V6-23318-00	22-27
174-16164-00	11-17	3V6-14411-00	5-13	482-21522-00	16- 7	4M3-23340-00-90	22- 8
4M3-16300-00	11- 1	3V6-14412-00	5-16	4M3-21611-00	16-12	451-23346-01	22-18
559-16321-01	11- 6	3V6-14416-00	5-19	4M3-21621-00	16- 6	4M3-23351-00	22- 9
2A6-16324-00	11- 7		35-40		16-13	462-23392-02	22- 6
241-16341-01	11-23	1Y8-14437-01	5-14	482-21622-01	16-14	122-23411-00	21- 9
241-16342-00	11-25	3V6-14451-00	5-15	3V6-21629-01	16-21	156-23411-00	21- 1
132-16346-00	11-28	4M3-14453-00	5-11	4M3-21711-00	17- 1	122-23412-00	21-11
132-16351-00	11- 9	4M3-14610-00	7- 1	4M3-21721-00	17- 4	156-23412-00	21-12
137-16356-00	11-19	152-14613-00	7-12	4M3-21737-00	17- 3	122-23416-00	21- 8
248-16357-00	11-21		35-41		17- 7	3V6-23435-00-33	21- 3
307-16367-00	11- 8	3M7-14615-00	7-19	3V6-21745-00	18- 7	1E6-23441-00-98	21- 4
1E8-16371-00	11- 5	3V6-14718-00	7- 2	3V6-21750-00	18- 1	164-23462-00	21- 2
314-16396-01	11-30	3V6-14728-00	7- 3	1Y1-2176A-00	18- 3	3V6-23489-01	22-25
437-17121-01	12- 3	4M3-14752-00	7- 9	1Y1-21763-00	18- 4	3V6-24110-00-02	23- 1
427-17131-00	12- 4	4M3-14753-00	7- 8	1Y1-21764-00	18- 2	2J0-24161-20	23- 3
482-17141-00	12- 5	4M3-15111-01	8- 1	1T9-21771-00	18- 5	1A8-24181-00	23- 6
482-17151-00	12- 6	3M5-15121-00	8- 7	4M3-22110-00-33	19- 1	156-24181-00	23- 4
248-17211-00	12-12	304-15128-00	8- 8	4M3-22123-00	19- 2	431-24181-00	17- 6
427-17221-00	12-15	137-15353-00	13-17	248-22141-00	19- 3	353-24182-00	23- 5
427-17231-00	12-16		35-46	4M3-22151-00	19- 6	4M3-24240-00	23- 2
382-17241-60	12-17	248-15357-00	9- 2	4M3-22210-00-33	20- 1	357-24500-10	23- 9
482-17251-00	12-18	315-15362-01	9-14	4M3-22310-00-35	19- 7	357-24515-10	23-16
482-17410-00	12- 1	498-15371-00	8-10	148-22315-00	19-21	357-24521-10	23-14
443-17411-00	12- 2	482-15411-00-Y4	9- 1	3V6-22318-01	19-22	357-24522-10	23-15
315-17421-01	12-11	314-15415-00-Y4	9- 4	382-22322-00	19-29	357-24524-10	23-10
164-17427-00-10	12-14	314-15416-00-Y4	9-15	482-22323-01	19-28	2N3-24528-00	23-13
174-17461-40	12-25	314-15421-00-Y4	9- 9	482-22324-01	19-31	357-24529-10	23-11
174-17461-50	12-25	315-15451-02	9-11	4M3-22325-00	19-27	2N3-24531-00	23-17
174-17461-60	12-25		35-44	4M3-23101-00	22- 1	357-24532-10	23-18
525-17471-00	12-21	314-15455-00	9- 5	4M3-23110-00	22- 7	2N3-24535-00	23-12
4M3-18101-01	14- 1		35-43	1E7-23111-00	22-15	122-24610-01	23-21

NUMERICAL INDEX

NUMERICAL INDEX

PART NO.	REF. NO.	PART NO.	REF. NO.	PART NO.	REF. NO.	PART NO.	REF. NO.	PART NO.	REF. NO.	PART NO.	REF. NO.
122-24612-01	23-22	214-26261-00	27- 6	152-83311-10	29-12	90101-06278	25-18	90201-07076	25-13	90464-20031	33-21
3V6-24711-00	24- 2	1Y1-26290-30	27-21	3M7-83312-10	29- 2		26-14	90201-08624	4-15	90467-08003	18-11
2A6-24738-00	24- 4	1Y1-26290-40	27-20		29- 8	90101-06304	24- 5	90201-08753	7-18		23-20
2V0-24748-00	24- 3	3V6-26311-00	27- 7		29-11	90101-08439	19-23	90201-10140	20- 3	90468-02033	4- 5
3V6-24758-01	24-14	4M3-26312-00	27- 8	1M1-83318-00	29- 4	90101-14259	13-16	90201-12535	3-18		4-24
3V6-24810-00-93	24- 9	4M3-26321-00	27- 9	3T2-83330-10	29- 7	90105-14060	21- 6	90201-14218	20- 2	90468-26048	10- 3
3V6-24860-01-98	24-15	4M3-26335-00	27-16	4G3-83340-10	29-10	90109-06001	13-19	90201-143A4	19- 5	90480-10068	26- 9
296-24861-00	24-17	4G3-26339-00	27-10	3E1-83350-11	29-15	90109-06410	34- 3	90201-14586	14- 8	90480-12053	17- 2
3V6-24862-00	24-16	3V6-26341-00	27-12	2A7-83371-10	33-22		34-10	90201-15564	28-11		17- 5
3V6-25026-10-35	26- 8	382-26372-01	27-13	3F4-83510-F0	30- 1	90109-08063	26-34	90201-20266	12- 7	90480-16110	3-15
3V6-25104-00	25-23		27-17	1M3-83513-00	30- 4	90109-08361	26-21		12- 9	90501-10245	28- 7
248-25111-00-35	25- 1	3V6-27211-00-33	28- 1			90109-08368	26-35	90201-20269	25-14	90501-20122	11-10
2K5-25118-00	25-28	4M3-27231-00	28- 3		30- 3	90109-10473	28-16	90202-05005	7- 6	90504-18009	10-17
3V6-25121-00-35	25- 6	3V6-27311-00-33	28-13	2W0-83520-00	30- 2	90113-06013	11-24	90202-06010	7- 5	90506-09009	14- 2
3E1-2513A-10	25-22	3V6-27311-10-33	28-14			90116-06016	7-13	90208-12015	11-16	90506-09112	13-20
437-25130-00	25- 7	3R1-27411-00	28-19	355-83522-00	30- 6	90116-08104	1- 6	90209-06187	16- 3	90506-10019	11-27
301-25135-00	25- 9	3R1-27421-00	28-20	355-83524-00	30- 7	90119-05001	11-11	90209-06194	7- 7	90506-16036	26-11
109-25136-00	25-10	3V6-27451-00-33	28-18	355-83526-00	30- 5	90123-06010	27-14	90209-22071	2- 6	90506-16150	25- 8
102-25137-00	25-33	3V6-28100-10	24-20	438-83550-01	30- 9	90123-08046	27-18		35-29	90506-28100	28-15
301-25138-00	25-11	4M3-81309-10	3- 2	214-83912-00	34- 2	90149-08155	14- 4	90215-08014	14- 6	90508-20023	28-21
183-25149-00	25-15	4M3-8131X-10	3-12	233-83922-30	34- 9	90170-08029	14- 5	90215-16020	11-13	90508-26040	10- 6
558-25155-00	25-17	647-81318-10	3- 6	256-83936-00	33-20	90170-10038	27-11		12-28	90508-32437	14- 3
3V6-25304-00	26-25	482-81323-10	3-11	437-83936-00	29-16	90170-12060	11-15	90240-06006	28- 5	90508-35442	28-10
391-25311-00-35	26- 1		3-14		33-19	90170-12067	3-20	90249-12008	28- 8	90560-12138	25- 3
109-25315-00	25- 4	482-81324-10	3- 9	503-83956-10	34-16	90170-20224	26-41	90280-05013	2- 8	90560-15136	26- 2
183-25315-00	26- 3	109-81328-11	3-13	4M3-83972-00	34-12	90171-10004	25-30	90338-16029	12-29	91401-20012	26-38
3V6-25327-00	26-24	482-81328-10	3-10	437-83976-03	34-13	90171-14020	26-43	90340-12005	8-12	91401-20020	25-31
437-25330-00	26-10	482-81347-10	3- 7	3M7-84110-00	34-17	90175-06013	28- 9	90387-064A4	28- 2	91401-25012	28- 6
248-25351-00	26-12	4F4-81910-60	33-27	317-84112-30	31- 1	90176-10013	20- 4	90387-12265	25-32		28-24
3V6-25351-00	26-10	353-81970-50	3-21	206-84114-60	31- 5	90179-06143	27-15	90387-154A2	26-45	91401-30022	28-12
1E7-25355-00	25-20	353-81970-63	3-21	3M7-84130-00	31- 4	90179-08065	1- 7	90387-20170	2-10	91401-30030	26-44
304-25364-01	26-13	120-82110-12	33- 1	202-84315-00	31- 8	90179-08148	27-19	90387-204A3	26-39	91402-16015	6-35
183-25366-01	26-16	120-82110-29	33- 1	195-84320-00	31- 2	90179-08168	26-23	90387-20439	11-18	91609-40016	13- 3
4M3-25371-00	26-33	3V6-82131-00	33- 2	195-84324-00	31- 3	90179-10201	1- 9	90387-20491	12-26	91701-08038	28-22
2A6-25381-00	26-42	353-82150-00	33- 6	3T2-84510-00	31- 6	90179-16018	11-12	90430-04004	4- 7	91810-02014	9-10
353-25381-00	25-29	116-82151-00	33- 7	122-84514-30	32- 1		12-27		35-36	91830-21014	8- 5
3V6-25387-00	26-40	2K7-82310-10	33- 8	3T2-84520-00	32- 3	90179-25033	21- 7	90430-11034	33-16		9- 3
3V6-25388-00	26-46	437-82370-21	33-11	1K8-84521-00	32- 2	90185-08054	15- 3	90430-12038	8-13	91830-24016	8- 6
3V6-25389-00	26-47	2F5-82508-50	33-12	1K8-84523-00	32- 5	90185-10035	15- 7		35-42	92501-06010	12-30
1T2-25394-00	26-30	3V6-82530-00	33-17	2E9-84524-00	32- 4	90185-10037	28-17	90445-05333	4- 4		13- 9
482-25412-00	26-22	136-82540-00	33-15	4M3-85500-10	32- 6	90201-06067	5-21	90445-08338	33- 3	92501-06012	12-22
482-25447-00	26-20	4M3-82590-20	33-18	482-85520-10	3- 1		5-23	90445-09079	23-19		19- 8
4M3-26111-00	27- 1	3V6-82911-00	34- 1	4M3-85533-10	3- 8		16- 2	90445-09225	18- 6		19-32
3V6-26123-00	27-22	3V6-82920-00	34- 7	482-85540-10	3- 8		16-11	90446-07009	8-11		33- 4
3V6-26241-00	27- 5	3V6-82921-30	34- 8	8G9-85541-10	33-25		16-20	90460-43053	5-10	92501-06015	5-17
3V6-26242-00	27- 2	3T2-83310-10	29- 1	2A7-85546-00	3- 5		16-22	90460-51059	5-12		11-32
434-26243-00	27- 3	152-83311-10	29- 3	4M3-85550-10	33-26		18- 8	90462-05012	3-17		19-10
1M1-26249-01	27- 4		29- 9		3- 3	90201-06069	23- 7	90462-20029	5- 7	92501-06018	16- 8

NUMERICAL INDEX		NUMERICAL INDEX		NUMERICAL INDEX		NUMERICAL INDEX		NUMERICAL INDEX	
PART NO.	REF. NO.	PART NO.	REF. NO.	PART NO.	REF. NO.	PART NO.	REF. NO.	PART NO.	REF. NO.
92501-06020	5-22	92901-08100	19-20	93210-18023	2-9	94624-28001	26-32	97321-08030	10-21
	9-17		19-24		35-35	94701-00043	1-3	97602-03108	5-4
92501-06030	9-8		19-26	93210-42101	26-6	95301-05600	4-12	98501-04016	6-16
92501-06035	5-20		21-17	93210-89268	11-3	95301-06600	7-15	98501-05008	7-10
	9-12		24-7	93306-00406	26-17		16-9		19-30
92501-06045	8-2		24-11	93306-20204	26-4		19-16		31-7
	19-12		24-19	93306-20401	12-20		25-19	98501-05010	33-13
92501-06055	8-3		26-36	93306-20517	2-12		26-15	98501-05012	13-5
	9-7		27-24	93306-30103	25-2		30-8	98501-05016	4-17
92501-06060	9-13		29-13	93306-30401	12-23	95301-06700	11-26	98501-05020	3-22
92501-06065	8-4		31-10	93306-30405	2-11	95301-08600	7-16	98501-05022	34-14
	9-6	92901-08600	24-8	93310-216E1	2-19		29-14		34-18
92501-08010	8-9		24-12		35-31		31-13	98501-05030	34-15
92502-06016	33-28		28-23	93310-42231	2-7	95301-08700	26-37	98506-04020	22-21
92502-06025	33-9		31-11		35-30	95301-08800	21-18	98901-04008	4-8
92701-06015	3-16	92901-10100	15-8	93311-31515	12-19	95303-08800	29-5	98906-06012	7-4
92901-05100	4-11		21-15	93410-13004	10-14	95601-06100	34-4		
	7-11		22-19	93410-20009	10-9		34-11		
	13-6		28-26		25-16	95601-14100	19-4		
	33-14	92901-12100	3-19	93410-20038	12-8	95611-10630	1-8		
92901-05600	3-23	92902-04100	6-17		12-10	95701-06100	23-8		
92901-06100	7-14	92902-06100	33-5	93410-30012	0-5		32-7		
	11-33		33-10	93420-42007	26-18	95821-08035	21-5		
	16-5		33-29	93430-08006	4-22	95821-08115	15-2		
	16-10	92902-06600	33-30	93430-12009	14-9	95821-10090	15-6		
	16-16	92902-08200	31-12	93440-11029	10-19	95821-10105	15-5		
	16-19	93101-10002	4-18	93440-15012	12-13	97301-06012	33-23		
	16-24		35-50	93450-17044	2-17	97301-06016	16-18		
	18-10	93102-18008	25-5		35-5		18-9		
	19-9	93102-25061	2-13		35-10	97301-06020	16-4		
	19-11		35-48		35-15		16-23		
	19-15	93102-26042	12-24		35-20		22-28		
	19-33		35-54		35-25	97301-06022	34-5		
	22-29	93103-28011	2-14	93501-04011	11-20	97301-06025	5-8		
	33-24		35-49		21-13		16-15		
	34-6	93104-07003	25-12	93503-16010	21-10	97301-08016	19-19		
92901-06200	19-14	93104-11028	11-29	93505-32002	4-2		19-25		
	28-4		35-53	93603-22028	4-21		24-18		
92901-06600	5-9	93104-20017	10-11	93604-22050	13-2		27-23		
	5-18		35-51	94130-19629	25-24	97301-08020	15-10		
	11-31	93104-22018	26-5	94141-18630	26-26		19-17		
	16-17	93105-47007	25-21	94227-19161	25-25	97301-08025	24-6		
	19-13	93106-26005	26-19	94235-18022	26-27		24-10		
	22-30	93109-05022	35-52	94325-18043	26-28		31-9		
92901-08100	7-17	93109-07024	11-22	94327-19111	25-26	97301-08045	21-16		
	15-4	93109-14005	14-7	94416-19263	25-27	97301-10016	28-25		
	15-11		35-55	94418-18246	26-29	97301-10040	21-14		
	19-18	93210-14104	25-34	94580-14118	26-31	97321-06020	14-12		

## PARTS NAME INDEX

DESCRIPTION	REF. NO.
ABSORBER 1	1-10
ABSORBER 2	1-11
*	1-12
ABSORBER 3	1-13
ABSORBER 4	1-14
AXLE, drive	12-11
AXLE, main (11T)	12- 2
AXLE, sprocket	26-40
AXLE, wheel	25-29
*	26-42
BALL	4- 2
*	11-20
*	21-10
*	21-13
BAND	22-20
*	22-25
BAND, battery	33-26
BAND, flap	33- 2
*	16- 7
BAND, rim (2.50-18)	16-14
BAND, rim (2.75-19)	26-28
BAND, switch cord	25-26
*	29- 6
*	33-19
*	33-20
*	34-16
BAR, shift fork guide 1	13-14
BAR, shift fork guide 2	13-15
BAR, tension	26-33
BASE, magneto	3- 2
BATTERY ASSY (G.S. 6N4-2A-2)	33- 1
BATTERY ASSY (6N4-2A-2)	33- 1
BEARING (B6004Z)	26-17
BEARING (B6202Z)	26- 4
BEARING (B6204)	12-20
BEARING (B6205)	2-12
BEARING (B6301Z)	25- 2
BEARING (B6304)	12-23
BEARING (B6304C3)	2-11
BEARING, cylindrical	2- 7
*	2-19
*	12-19
*	35-30
*	35-31
BODY ASSY, headlight	31- 8
BODY, cap	18- 5
BODY, float chamber 1	6-10
BOLT	5- 8

## PARTS NAME INDEX

DESCRIPTION	REF. NO.
BOLT	10-21
*	13-16
*	13-19
*	14-12
*	15-10
*	16- 4
*	16-15
*	16-18
*	16-23
*	18- 9
*	19-17
*	19-19
*	19-23
*	19-25
*	21-14
*	21-16
*	22-28
*	24- 5
*	24- 6
*	24-10
*	24-18
*	25-18
*	26-14
*	26-21
*	26-34
*	26-35
*	27-14
*	27-18
*	27-23
*	28-16
*	28-25
*	31- 9
*	33-23
*	34- 3
*	34- 5
*	34-10
BOLT 1	22-18
BOLT, cap	22-15
BOLT, flange	15- 2
*	15- 5
*	15- 6
*	21- 5
BOLT, hexagon socket head	22-17
BOLT, set	11-24
BOLT, stud	1- 6
*	1- 8
*	7-13
BOLT, washer based	21- 6

## PARTS NAME INDEX

DESCRIPTION	REF. NO.
BOLT, with washer	11-11
BOOT	22-14
*	27-10
BOSS, clutch	11- 5
BRACKET, seat	24- 3
*	24- 4
*	25- 7
BRAKE SHOE COMP.	26-10
*	26- 8
BRAKE SHOE PLATE ASSY	26-10
BREATHER	8-10
BULB (6V-10W)	29- 3
*	29- 9
*	29-12
BULB (6V-17/5.3W)	32- 3
BULB (6V-25/25W)	31- 4
BULB (6V-3W)	30- 3
BUSH	25-10
BUSH 1	19- 2
C.D.I. MAGNETO ASSY	3- 1
C.D.I. UNIT ASSY	33-25
CABLE, brake	27-12
CABLE, clutch	27-16
CABLE, pump	27- 9
CABLE, throttle 1	27- 7
CABLE, throttle 2	27- 8
CAMSHAFT	25-20
*	26-12
CAP	6-38
*	19-21
CAP ASSY	23-21
CAP 1	34-12
CAP, cleaner case 1	5-16
CAP, plunger	6- 3
CARBURETOR ASSY 1	6- 1
CARRIER ASSY	24- 9
CASE, air cleaner 1	5-13
CHAIN (DID428HM-118L)	26-31
CHAIN CASE ASSY	19- 7
CIRCLIP	2-17
*	4-22
*	10- 5
*	10- 9
*	10-14
*	10-19
*	12- 8
*	12-10
*	12-13

PARTS NAME INDEX

DESCRIPTION	REF. NO.
CIRCLIP	14- 9
*	25-16
*	26-18
*	35- 5
*	35-10
*	35-15
*	35-20
*	35-25
CLAMP	3-10
*	3-13
*	3-17
*	5- 7
*	33-21
CLAMP, carrier	24-16
CLAMP, hose	5-10
*	5-12
CLIP	4- 5
*	4-13
*	4-24
*	6-22
*	6-34
*	10- 3
*	18-11
*	23-20
CLIP, oil seal	22- 5
CLIP, Plunger	6-18
CLUTCH ASSY	11- 1
CLUTCH, hub	26-16
CLUTCH, meter	25-15
COIL, charge	3- 4
*	3- 5
COIL, lighting	3- 8
COLLAR	2-10
*	11-18
*	12-26
*	25-32
*	26-39
*	26-45
*	28- 2
*	30- 6
*	35-26
CONNECTING ROD ASSY	27- 6
CONNECTOR, cable	3-12
CORD ASSY	21- 8
COVER, ball race 2	9- 1
COVER, crankcase 1	9- 9
COVER, crankcase 2	19-27
COVER, dust	9- 4
COVER, generator	

PARTS NAME INDEX

DESCRIPTION	REF. NO.
COVER, handle lever	27-13
*	27-17
*	25-28
COVER, hub dust	10-20
COVER, kick lever	9-15
COVER, oil Pump	26-24
COVER, Plate	6-37
COVER, Plunger cap	14-11
COVER, shift Pedal	17- 1
COVER, side (L.H)	17- 4
COVER, side (R.H)	24- 2
COVER, single seat	10- 8
COVER, spring	2- 2
CRANK 1	2- 3
CRANK 2	8- 1
CRANKCASE 1	8- 7
CRANKCASE 2	2- 1
CRANKSHAFT ASSY	21- 3
CROWN, handle	23-14
CUP, filter	1- 4
CYLINDER 1	26- 7
DAMPER	30- 4
*	30- 5
DAMPER 2	17- 6
DAMPER, locating 1	23- 4
*	23- 6
*	23- 5
DAMPER, locating 2	5-14
DUCT	5-15
ELEMENT, air cleaner	17- 3
EMBLEM	17- 7
*	23- 3
EMBLEM 1	7- 1
EXHAUST PIPE ASSY 1	16- 1
FENDER, front	16-12
FENDER, rear	25- 4
FLANGE, spacer	26- 3
*	16- 6
FLAP	16-13
*	29-15
FLASHER RELAY ASSY	6-11
FLOAT	28-18
FOOTREST	28-19
FOOTREST 1	28-20
FOOTREST 2	22- 3
FORK UNIT ASSY	22- 2
FORK UNIT ASSY 2	13-11
FORK, shift 1	13-12
FORK, shift 2	

PARTS NAME INDEX

DESCRIPTION	REF. NO.
FORK, shift 3	13-13
FRAME COMP	15- 1
FRONT CARRIER ASSY	24-15
FRONT FLASHER LIGHT ASSY 1	29- 1
FRONT FORK ASSY	22- 1
FUEL COCK ASSY 1	23- 9
FUEL TANK COMP.	23- 1
FUSE (6V-10A)	33- 7
FUSE HOLDER ASSY	33- 6
GASKET	4- 7
*	6-25
*	6-33
*	8-13
*	22-16
*	23-15
*	23-18
*	33-16
*	35-36
*	35-42
*	35-32
GASKET KIT	5-19
GASKET, air cleaner	35-40
*	23-22
GASKET, cap	9- 5
GASKET, crankcase cover	9-11
*	35-43
*	35-44
*	1- 5
GASKET, cylinder	35-34
*	1- 2
GASKET, cylinder head 1	35-33
*	13-17
GASKET, drain	35-46
*	7-12
GASKET, exhaust pipe	35-41
*	6-12
GASKET, float chamber	35-38
*	32- 4
GASKET, lens	18- 4
GASKET, level gauge	9-16
GASKET, oil Pump cover 1	35-45
*	13-10
GASKET, Plug blind	4-16
GASKET, Pump case	35-37
*	5- 5
GASKET, valve seat	35-39
*	25- 9
GEAR, drive (26T)	10- 2
GEAR, kick (27T)	

## PARTS NAME INDEX

DESCRIPTION	REF. NO.
GEAR, kick idle (26T)	10-12
GEAR, meter (9T)	25-11
GEAR, Primary drive (19T)	11-14
GEAR, Pump drive (30T)	4-20
GEAR, 1st wheel (35T)	12-12
GEAR, 2nd Pinion (15T)	12-2
GEAR, 2nd wheel (30T)	12-15
GEAR, 3rd Pinion (19T)	12-4
GEAR, 3rd wheel (26T)	12-16
GEAR, 4th Pinion (24T)	12-5
GEAR, 4th wheel (21T)	12-17
GEAR, 5th Pinion (27T)	12-6
GEAR, 5th wheel (18T)	12-18
GRAPHIC SET	23-2
GRIP (L.H)	27-5
GRIP (R.H)	27-2
GROMMET	3-15
*	9-2
*	17-2
*	17-5
*	26-9
GUARD, chain	19-22
GUARD, lever	27-22
GUARD, mud	16-21
GUIDE, cable	6-23
GUIDE, sPring	10-7
HANDLEBAR	27-1
HEAD, cylinder 1	1-1
HEADLIGHT UNIT ASSY	31-1
HOLDER	6-36
*	8-8
HOLDER, cable	22-24
HOLDER, cable 1	22-27
HOLDER, handle upper	21-4
HOLDER, kick gear	10-4
HOLDER, lever 1	34-1
HOLDER, lever 2	34-8
HOLDER, oil Pipe	4-23
HOOK, sPring	11-28
HORN	33-22
HOSE	4-4
*	8-11
*	18-6
*	23-19
*	33-3
HOUSING, Push screw	11-30
HUB, front	25-1
HUB, rear	26-1

## PARTS NAME INDEX

DESCRIPTION	REF. NO.
IGNITION COIL ASSY	33-8
INNER TUBE COMP.1	22-7
JET, main (#135)	6-21
JET, main (#145)	6-21
JET, main (#155)	6-21
JET, Pilot (#27.5)	6-2
JOINT, air cleaner 1	5-11
JOINT, carburetor	5-6
JOINT, chain	26-32
JOINT, exhaust 1	7-19
KEY, woodruff	2-8
KICK AXLE ASSY	10-1
KICK CRANK ASSY	10-15
LENS ASSY	31-3
LENS, flasher	29-2
*	29-8
*	29-11
LENS, level gauge	18-2
LENS, taillight	32-5
LEVER HOLDER ASSY 2	34-7
LEVER 1	34-2
LEVER 2	34-9
LEVER, camshaft	26-13
LEVER, camshaft 1	25-17
LEVER, cock	23-10
LEVER, kick	10-16
LEVER, Push	11-25
MAIN AXLE COMP.	12-1
MAIN SWITCH ASSY	33-12
METAL, worm shaft outer	4-19
MIRROR ASSY (L.H)	27-21
MIRROR ASSY (R.H)	27-20
NEEDLE	6-8
NEEDLE VALVE ASSY	6-5
NET, filter 2	23-16
NEUTRAL SWITCH ASSY	33-15
NOZZLE	4-6
NOZZLE, main	6-9
NUT	1-7
*	1-9
*	3-20
*	4-12
*	7-15
*	7-16
*	11-12
*	11-15
*	11-26
*	12-27

## PARTS NAME INDEX

DESCRIPTION	REF. NO.
NUT	14-5
*	16-9
*	19-16
*	21-7
*	23-17
*	25-19
*	26-15
*	26-23
*	26-37
*	26-41
*	27-11
*	27-15
*	27-19
*	29-14
*	30-8
*	31-13
*	6-24
NUT, cable adjusting	25-30
NUT, castle	26-43
*	20-4
NUT, crown	21-18
*	29-5
*	23-8
NUT, flange	32-7
*	15-3
NUT, self-locking	15-7
*	28-17
NUT, u	19-4
*	34-4
*	34-11
NUT, wing	28-9
O-RING	2-9
*	6-19
*	11-3
*	23-13
*	25-34
*	26-6
*	35-35
OIL PUMP ASSY	4-1
OIL SEAL	2-13
*	2-14
*	4-18
*	10-11
*	11-22
*	11-29
*	12-24
*	14-7
*	22-4



## PARTS NAME INDEX

DESCRIPTION	REF. NO.
OIL SEAL	25-5
*	25-12
*	25-21
*	26-5
*	26-19
*	35-48
*	35-49
*	35-50
*	35-51
*	35-52
*	35-53
*	35-54
OIL SEAL KIT	35-55
OIL TANK ASSY	35-47
PEDAL, brake	18-1
PEDAL, shift	28-1
PIN	14-10
PIN, clevis	28-8
*	28-5
PIN, cotter	28-22
*	6-35
*	25-31
*	26-38
*	26-44
*	28-6
*	28-12
*	28-24
PIN, crank 1	2-5
*	35-28
PIN, dowel	4-21
*	8-5
*	8-6
*	9-3
*	9-10
*	13-2
PIN, float	6-6
PIN, Piston	2-16
*	35-4
*	35-9
*	35-14
*	35-19
*	35-24
PIN, sPring	13-3
PIPE	6-15
PIPE, oil tank breather	18-7
PIPE, outlet	7-9
PISTON (STD)	2-15
*	2-15

## PARTS NAME INDEX

DESCRIPTION	REF. NO.
PISTON (STD)	35-2
PISTON (1ST O/S 0.25MM)	2-15
*	35-7
PISTON (2ND O/S 0.50MM)	2-15
*	35-12
PISTON (3RD O/S 0.75MM)	2-15
*	35-17
PISTON (4TH O/S 1.00MM)	2-15
*	35-22
PISTON ASSY (STD)	35-1
PISTON ASSY (1ST O/S)	35-6
PISTON ASSY (2ND O/S)	35-11
PISTON ASSY (3RD O/S)	35-16
PISTON ASSY (4TH O/S)	35-21
PISTON RING SET (STD)	2-18
*	35-3
PISTON RING SET (1ST O/S)	2-18
*	35-8
PISTON RING SET (2ND O/S)	2-18
*	35-13
PISTON RING SET (3RD O/S)	2-18
*	35-18
PISTON RING SET (4TH O/S)	2-18
*	35-23
PLATE, adjusting	4-9
PLATE, brake shoe	25-6
PLATE, clutch 1	11-7
PLATE, cover	12-21
PLATE, friction	11-6
PLATE, indicator	25-22
PLATE, Pressure 1	11-9
PLATE, side 1	13-4
PLATE, thrust 1	11-4
PLATE, thrust 2	11-17
PLUG	12-29
PLUG CAP ASSY	33-11
PLUG, blind	13-8
PLUG, drain	22-26
PLUG, oil level	9-14
PLUG, screw	6-20
PLUG, sPark	1-3
PLUG, straight screw	8-12
PLUNGER, starter	6-7
POINT, neutral	13-7
PRIMARY DRIVEN GEAR COMP.	11-2
PROTECTOR, muffler 2	7-3
PROTECTOR, muffler 1	7-2

## PARTS NAME INDEX

DESCRIPTION	REF. NO.
PROTECTOR, Pedal	15-9
PULLER, chain 1	26-46
PULLER, chain 2	26-47
RACE, ball 1	21-1
*	21-9
RACE, ball 2	21-11
*	21-12
REAR ARM COMP.	19-1
REAR FLASHER LIGHT ASSY	29-10
REAR FLASHER LIGHT ASSY 1	29-7
RECTIFIER ASSY	3-21
*	3-21
REED VALVE ASSY	5-1
REED, valve	5-2
REFLECTOR, level gauge	18-3
RIM (1.60-19)	25-27
RIM (1.85-18)	26-29
RIM, headlight	31-2
RING, cushion	11-8
RING, leaf	27-4
RING, piston	22-12
RING, stop	25-33
ROD, brake	28-3
ROD, connecting	2-4
*	35-27
ROD, Push 1	11-19
ROD, Push 2	11-21
ROTOR ASSY	3-3
SCREW 1	14-4
*	3-11
SCREW 2	3-14
SCREW, air adjusting	3-9
SCREW, bind	6-27
*	4-8
SCREW, flat head	7-4
SCREW, lens fitting	3-16
SCREW, lever fitting	32-6
SCREW, Pan head	23-12
*	3-7
*	3-22
*	4-17
*	5-17
*	5-20
*	5-22
*	6-16
*	7-10
*	8-2
*	8-3

## PARTS NAME INDEX

DESCRIPTION	REF. NO.
SCREW, Pan head	8- 4
*	8- 9
*	9- 6
*	9- 7
*	9- 8
*	9-12
*	9-13
*	9-17
*	11-32
*	12-22
*	12-30
*	13- 5
*	13- 9
*	16- 8
*	19- 8
*	19-10
*	19-12
*	19-30
*	19-32
*	22-21
*	31- 7
*	33- 4
*	33- 9
*	33-13
*	33-28
*	34-14
*	34-15
*	34-18
SCREW, Pan head with washer	5- 4
SCREW, Push	11-23
SCREW, throttle	6-14
SEAL, Guard	19- 6
SEAL, steering	21- 2
SEAT, sPring lower	22-11
SEAT, sPring upper	22-23
SHAFT, Pivot	19- 3
SHAFT, worm	4-14
SHIFT CAM ASSY	13- 1
SHIFT SHAFT ASSY	14- 1
SHIM (0.3T)	4-10
SHIM (0.5T)	4-10
SHIM (1.0T)	4-10
SHIM 1 (1.0T)	12-14
SHOCK ABSORBER ASSY, rear	20- 1
SILENCER, exhaust	7- 8
SINGLE SEAT ASSY	24- 1
SOCKET	31- 5

## PARTS NAME INDEX

DESCRIPTION	REF. NO.
SOCKET ASSY	30- 2
SPACER	3- 6
*-85	25- 3
*-85	26- 2
SPACER, bead	26-30
SPEEDOMETER ASSY	30- 1
SPEEDOMETER CABLE ASSY	30- 9
SPOKE SET, front	25-23
SPOKE SET, rear	26-25
SPRING	22- 9
*-86	23-11
*-86	24-14
SPRING, air adjusting	6-26
SPRING, check ball	4- 3
SPRING, compression	10-17
*-86	11-10
*	28- 7
SPRING, front carrier	24-17
SPRING, front fork	22-22
SPRING, Plunger	6-31
SPRING, rebound	22-10
SPRING, reflector	31- 6
SPRING, tension	11-27
*	13-20
*	14- 2
*	25- 8
*	26-11
*	28-15
SPRING, throttle stop	6-13
SPRING, throttle valve	6-30
SPRING, torsion	10- 6
*	14- 3
*	28-10
*	28-21
SPROCKET, drive (14T)	12-25
SPROCKET, drive (15T)	12-25
SPROCKET, drive (16T)	12-25
SPROCKET, driven (47T)	26-20
STAND, side	28-13
*	28-14
STAY, chain case 2	19-29
STAY, dust cover 1	19-28
STAY, dust cover 3	19-31
STAY, flasher 1	29- 4
STOP SWITCH ASSY	33-17
STOPPER	10-10
STOPPER LEVER ASSY	13-18
STOPPER, cable	6-29

## PARTS NAME INDEX

DESCRIPTION	REF. NO.
STOPPER, reed valve	5- 3
SWITCH, handle 1	34-17
SWITCH, handle 4	34-13
TAILLIGHT BASE ASSY	32- 2
TAILLIGHT UNIT ASSY	32- 1
TAPER, sPindle	22-13
TIRE (3.00-19)	25-24
TIRE (4.10-18)	26-26
TOOL BOX COMP.	24-13
TOOL KIT	24-20
TOP, mixing chamber	6-32
TUBE (2.75-19)	25-25
TUBE (3.50-18)	26-27
TUBE, throttle guide	27- 3
UNDER BRACKET COMP.	22- 8
VALVE, throttle 1	6-28
VOLTAGE REGULATOR ASSY	33-27
WASHER	2- 6
*-87	17- 7
*-87	10-13
*-87	16- 3
*-87	26-22
*-87	31-12
*-87	33-30
*-87	35-29
WASHER, conical sPring	11-16
WASHER, kick lever	10-18
WASHER, lock	11-13
*	12-28
*-87	14- 6
*-87	6- 4
WASHER, needle valve	19-14
WASHER, Plain	28- 4
*-87	3-18
*-87	3-23
*-87	4-15
*-87	5- 9
*-87	5-18
*-87	5-21
*-87	5-23
*-87	7- 5
*-87	7- 6
*-87	7-18
*-87	11-31
*-87	12- 7
*-87	12- 9
*-87	14- 8
*-87	16- 2

PARTS NAME INDEX

PARTS NAME INDEX

DESCRIPTION	REF. NO.
WASHER, Plate	16-11
*	16-17
*	16-20
*	16-22
*	18- 8
*	19- 5
*	19-13
*	20- 2
*	20- 3
*	22-30
*	23- 7
*	24- 8
*	24-12
*	25-13
*	25-14
*	26-23
*	31-11
WASHER, Plate (1.5T)	28-11
WASHER, sPecial	22- 6
*	30- 7
WASHER, sPring	3-19
*	4-11
*	6-17
*	7-11
*	7-14
*	7-17
*	11-33
*	13- 6
*	15- 4
*	15- 8
*	15-11
*	16- 5
*	16-10
*	16-16
*	16-19
*	16-24
*	18-10
*	19- 9
*	19-11
*	19-15
*	19-18
*	19-20
*	19-24
*	19-26
*	19-33
*	21-15
*	21-17
*	22-19

DESCRIPTION	REF. NO.
WASHER, sPring	22-29
*	24- 7
*	24-11
*	24-19
*	26-36
*	27-24
*	28-26
*	29-13
*	31-10
*	33- 5
*	33-10
*	33-14
*	33-24
*	33-29
*	34- 6
WIRE HARNESS ASSY	33-18



COPY RIGHT: ALL RIGHTS RESERVED  
NO PART OF THIS PUBLICATION MAY BE  
REPRODUCED WITHOUT PERMISSION.

[www.legends-yamaha-enduros.com](http://www.legends-yamaha-enduros.com)



**YAMAHA**

YAMAHA MOTOR CO., LTD.  
2500 SHINGAI IWATA-SHI SHIZUOKA-KEN JAPAN

PRINTED IN JAPAN  
First edition Apr., 1980

T.G