

MODEL AT3/CT3

www.legends-yamaha-enduros.com

This Parts List is for the exclusive parts for AT3/CT3.

Please refer to AT2/CT2 Parts List (for U.S.A. Model) for the parts not listed in this publication.

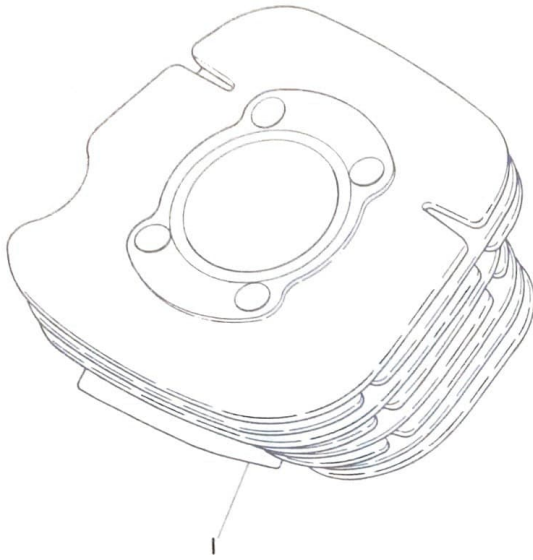
CONTENTS

Fig. 1	Engine	1
Fig. 2	Chassis	3
Fig. 3	Head Lamp · Tail Lamp	7

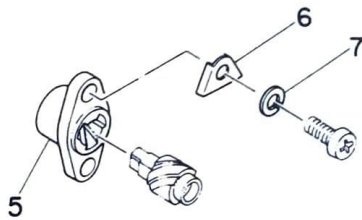
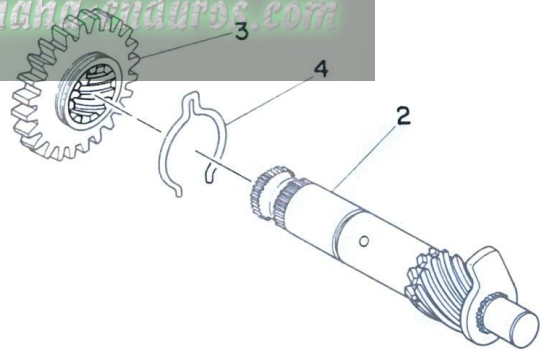
NUMERICAL INDEX

www.legends-yamaha-enduros.com

Fig. 1 ENGINE



www.legends-yamaha-suduroc.com

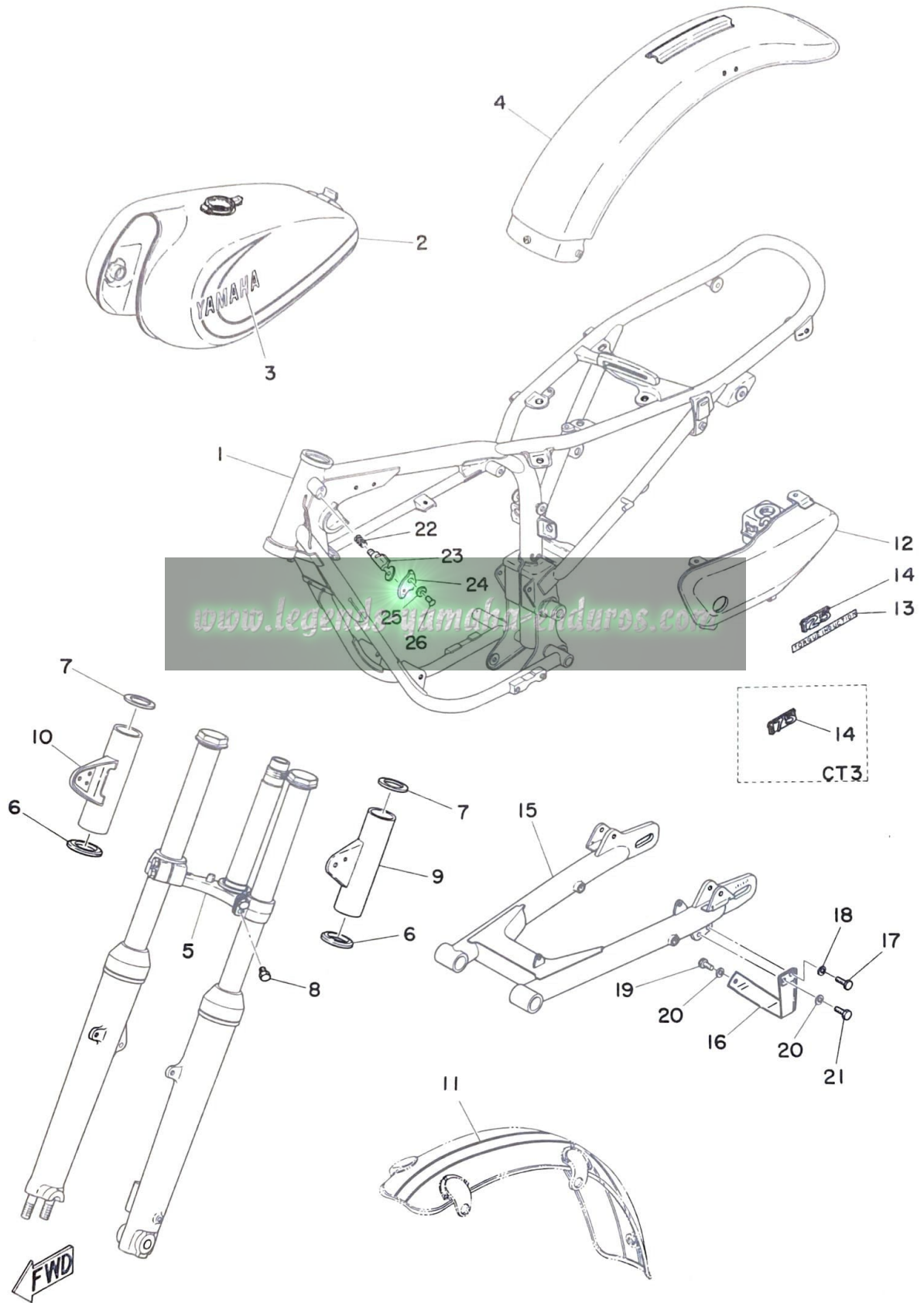


ENGINE

Ref. No.	Part No.	Description	Q' ty		Applicable Machine No.	Remarks
			AT3	CT3		
1- 1	316-11311-01	CYLINDER	1			
	314-11311-01	CYLINDER		1		
1- 2	315-15660-01	KICK AXLE ASS'Y	1	1		
1- 3	315-15641-00	GEAR, kick (27T)	1	1		
1- 4	315-15687-00	CLIP, kick	1	1		
1- 5	314-16396-01	HOUSING, push screw	1	1		
1- 6	315-15363-00	PLATE	2	2		
1- 7	92901-06100	WASHER, spring	2	2		



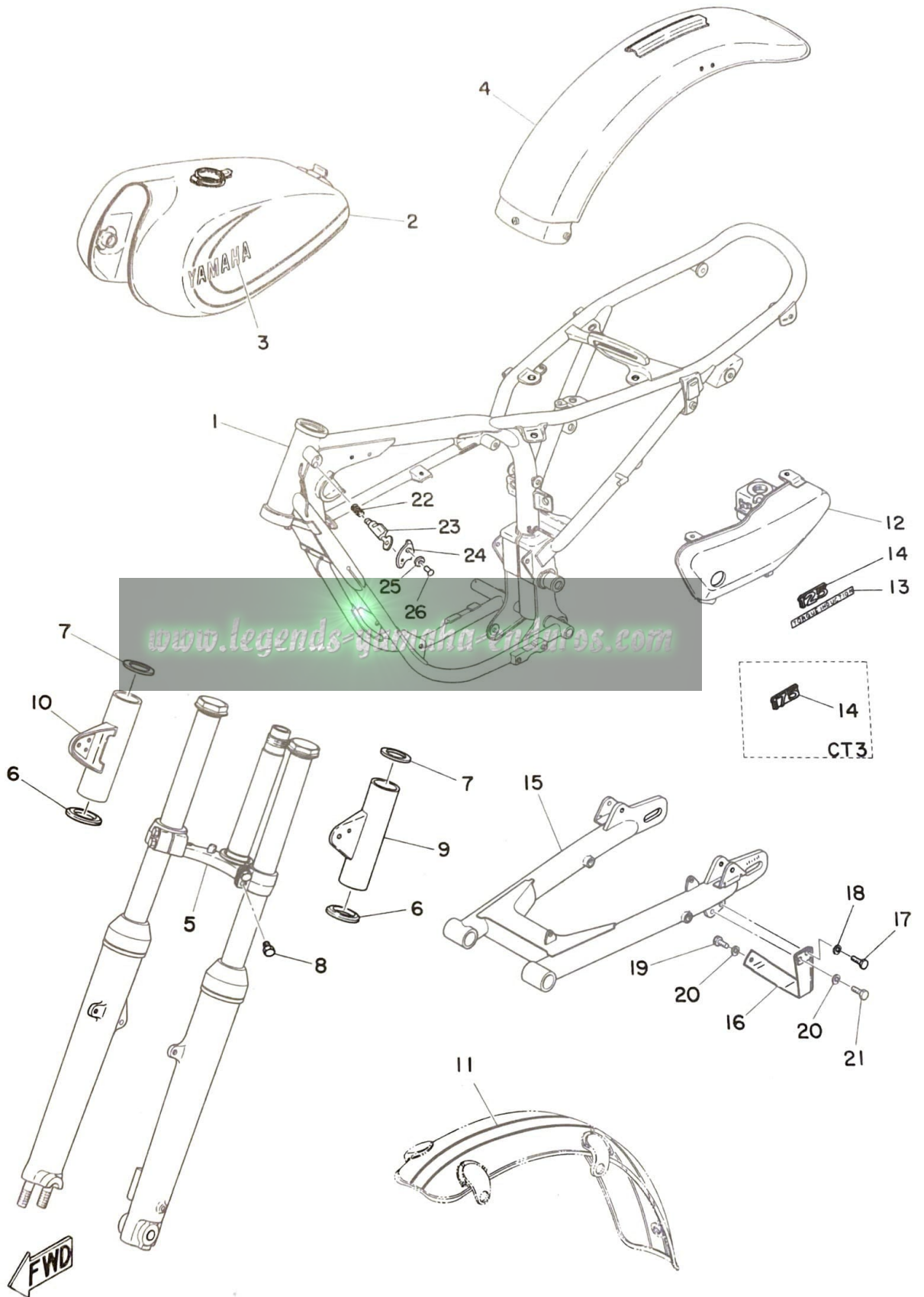
Fig. 2 CHASSIS



CHASSIS

Ref. No.	Part No.	Description	Q'ty		Applicable Machine No.	Remarks
			AT3	CT3		
2- 1	315-21110-00-33	FRAME COMP.	1	1		
2- 2	315-24110-00-02	FUEL TANK COMP.	1			Brigade Blue
	315-24110-00-01	FUEL TANK COMP.		1		Gold Dust
2- 3	322-24161-00	EMBLEM	2	2		
2- 4	316-21610-00-35	REAR FENDER COMP.	1	1		
2- 0-1	316-23101-20	FRONT FORK ASS'Y	1			
	314-23101-20	FRONT FORK ASS'Y		1		
2- 5	248-23340-51-33	. UNDER BRACKET COMP. ...	1	1		
2- 6	248-23115-01	. GUIDE, cover under	2	2		
2- 7	248-23116-01	. GUIDE, cover upper	2	2		
2- 8	275-23346-61	. BOLT, under bracket	4	4		
2- 9	248-23121-01-F3	COVER, upper left	1			Brigade Blue
	291-23121-60-M2	COVER, upper left		1		Gold Dust
2-10	248-23131-01-F3	COVER, upper right	1			Brigade Blue
	291-23131-01-M2	COVER, upper right		1		Gold Dust
2-11	316-21519-00	STRIPE, fender	1			
	308-21519-00	STRIPE, fender		1		
2-12	315-21705-01-F3	OIL TANK ASS'Y	1			Brigade Blue
	315-21705-01-M2	OIL TANK ASS'Y		1		Gold Dust
2-13	308-21787-01	EMBLEM, torque induction	1	1		
2-14	316-21786-00	EMBLEM, 125	1			
	314-21786-00	EMBLEM, 175		1		
2-15	315-22110-00-33	REAR ARM COMP.	1	1		
2-16	248-22318-00-33	GUARD, chain	1	1		
2-17	91201-06020	BOLT	1	1		

Fig. 2 CHASSIS

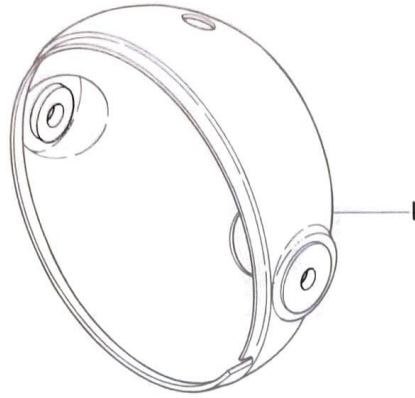


CHASSIS

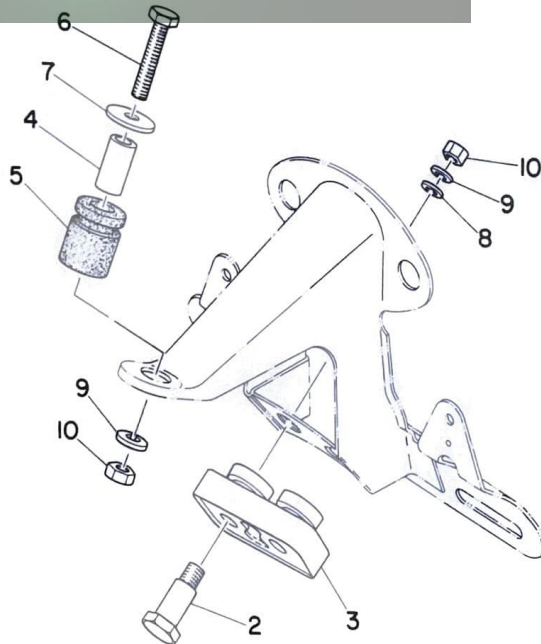
Ref. No.	Part No.	Description	Q'ty		Applicable Machine No.	Remarks
			AT3	CT3		
2-18	92901-06100	WASHER, spring	1	1		
2-19	97201-08015	BOLT	1	1		
2-20	92901-08100	WASHER, spring	2	2		
2-21	97201-08020	BOLT	1	1		
2-22	214-23485-00	SPRING	1	1		
2-23	214-23480-00	STEERING LOCK ASS'Y	1	1		
2-24	134-23484-10	CAP, handle lock	1	1		
2-25	214-23488-00	WASHER, wave	1	1		
2-26	214-23483-00	RIVET	1	1		

www.legends-yamaha-enduros.com

Fig. 3 HEAD LAMP · TAIL LAMP



www.legends-yamaha-enduros.com



HEAD LAMP · TAIL LAMP

Ref. No.	Part No.	Description	Q'ty		Applicable Machine No.	Remarks
			AT3	CT3		
3- 1	261-84330-60-F3	BODY ASS'Y	1			Brigade Blue
	214-84130-61-M2	BODY ASS'Y		1		Gold Dust
3- 2	338-84552-00	BOLT	2	2		
3- 3	308-84553-00	DAMPER	1	1		
3- 4	308-84557-00	COLLAR	1	1		
3- 5	308-84559-00	DAMPER	1	1		
3- 6	91203-06035	BOLT	1	1		
3- 7	102-28323-00	WASHER, leg shield	1	1		
3- 8	92901-06200	WASHER, plain	2	2		
3- 9	92901-06100	WASHER, spring	3	3		
3-10	98801-06100	NUT	3	3		

www.legends-yamaha-enduros.com

NUMERICAL INDEX

Ref No.	Parts No.	Ref No.	Parts No.	Ref No.	Parts No.
3- 7	102-28323-00	2- 4	316-21610-00-35		
2-24	134-23484-10	2-14	316-21786-00		
2-23	214-23480-00	2- 0-1	316-23101-20		
2-26	214-23483-00	2- 3	322-24161-00		
2-22	214-23485-00	3- 2	338-84552-00		
2-25	214-23488-00	2-17	91201-06020		
3- 1	214-84130-61-M2	3- 6	91203-06035		
2-16	248-22318-00-33	1- 7	92901-06100		
2- 6	248-23115-01	2-18	92901-06100		
2- 7	248-23116-01	3- 9	92901-06100		
2- 9	248-23121-01-F3	3- 8	92901-06200		
2-10	248-23131-01-F3	2-20	92901-08100		
2- 5	248-23340-51-33	2-19	97201-08015		
3- 1	261-84330-60-F3	2-21	97201-08020		
2- 8	275-23346-61	3-10	98801-06100		
2- 9	291-23121-60-M2				
2-10	291-23131-01-M2				
2-11	308-21519-00				
2-13	308-21787-01				
3- 3	308-84553-00				
3- 4	308-84557-00				
3- 5	308-84559-00				
1- 1	314-11311-01				
1- 5	314-16396-01				
2-14	314-21786-00				
2- 0-1	314-23101-20				
1- 6	315-15363-00				
1- 3	315-15641-00				
1- 2	315-15660-01				
1- 4	315-15687-00				
2- 1	315-21110-00-33				
2-12	315-21705-01-F3				
2-12	315-21705-01-M2				
2-15	315-22110-00-33				
2- 2	315-24110-00-01				
2- 2	315-24110-00-02				
1- 1	316-11311-01				
2-11	316-21519-00				

www.legends-yamaha-enduros.com

www.legends-yamaha-enduros.com



YAMAHA MOTOR CO., LTD.

PRINTED IN JAPAN

First edition Jul., 1972

(LIT-10013-14-01)

(314-80)