

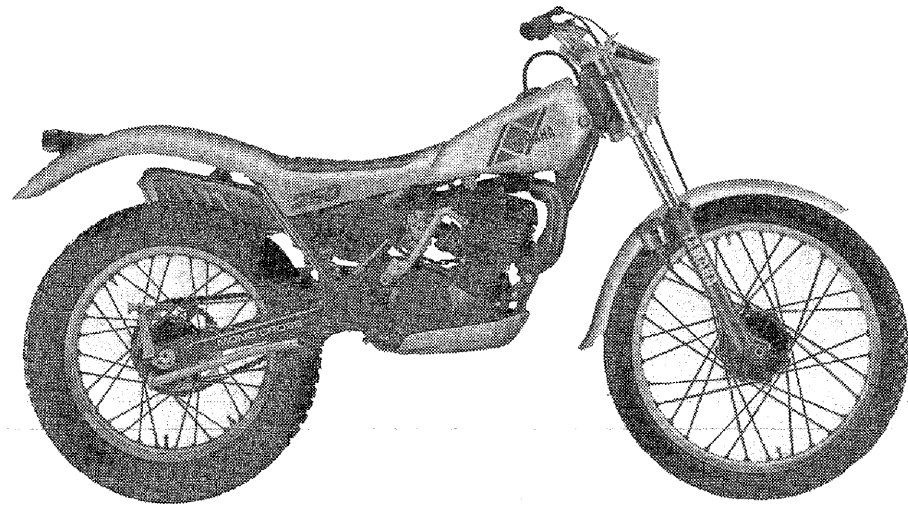
# **YAMAHA**

## **PARTS CATALOGUE**

# **TY250R (44J)**

**EUROPE**

**1444J-300E1**



# FOREWORD

This Parts Catalogue is related to the parts in use for the Yamaha TY 250R (44J).  
When you are ordering replacement parts for the TY 250R (44J), refer to this Parts Catalogue and quote both part numbers and part names correctly.

1. Modifications or additions which have been made after issue of the Parts Catalogue will be announced in the Yamaha Parts News.  
It is advisable that according to the Yamaha Parts News you make necessary corrections to the Parts Catalogue on hand to keep it up-to-date.

## 2. Abbreviations

The following abbreviations are used in this Parts Catalogue.

- U.R. Use size (thickness) and/or number as required.
- U.N. Use as many as you need.
- A.P. Alternate Parts
- L.M. Local Made
- F# Frame No. (Applicable machine No.)

3. The parts marked with (\*) in the parts number column of this Catalogue are not supplied with by Yamaha, those have to be found locally.
4. Parts, which are to be supplied in the form of assemblies, are listed with an indention of one letter's space, and a dot ( . ) is put against the name of each part.

**EXAMPLE** CARBURETOR ASS'Y  
     . JET, pilot  
     . NOZZLE, main

## 5. Indication of No. of constituent parts for assembly

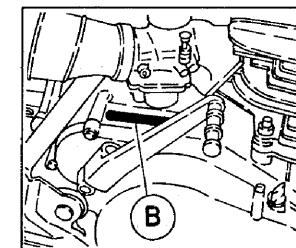
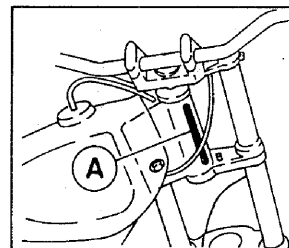
The numeral appearing to the right of each constituent part under the description indicates the quantity of such parts for each individual assembly unit.

**EXAMPLE**

Part No.	Description	Q'ty	Remarks
2F5-83310-60	FRONT FLASHER LIGHT ASS'Y	2	
115-83311-60	. BULB (6V-18W)	1	
1M1-83309-60	. REFLECTOR	1	

## 6. Initial Serial No. and Color Code

(A) Frame Serial No.	38V-004101 and following
(B) Engine Serial No.	38V-004101 and following



Color Code	Color Name	Abbreviate
FH	Fire Red	FIR

7. Applicable colors of graphics are represented in the "Remarks" column by the letter(s) appropriately picked out of the full word(s) showing such colors.

**EXAMPLE**

Part No.	Description	Q'ty	Remarks
2N4-24110-00-X5	FUEL TANK COMP.	1	MAXIM RED
3J1-24240-10	. GRAPHIC, fuel tank set	1	for MXR

# CONTENTS

## ENGINE

Cylinder .....	B2
Crankshaft · Piston .....	B3
Intake .....	B4
Carburetor .....	B5 ~ B6
Exhaust .....	B7
Crankcase .....	B8
Crankcase Cover 1 .....	B9
Starter .....	B10
Clutch .....	B11
Transmission .....	B12 ~ B13
Shift Cam · Fork .....	B14
Shift Shaft .....	B15

## CHASSIS

Frame .....	C2
Fender .....	C3
Rear Arm .....	C4 ~ C5
Rear Suspension .....	C6
Steering .....	C7
Front Fork .....	C8 ~ C9
Fuel Tank .....	C10
Seat .....	C11
Front Wheel .....	C12
Rear Wheel .....	C13 ~ C14
Steering Handle · Cable .....	C15
Stand · Footrest .....	D2 ~ D3
Generator .....	D4
Meter .....	D5
Headlight .....	D6

Taillight .....	D7
Handle Switch · Lever .....	D8
Electrical 1 .....	D9

## INDEX

Numerical Index .....	L1 ~ L3
Parts Name Index .....	M1 ~ M4

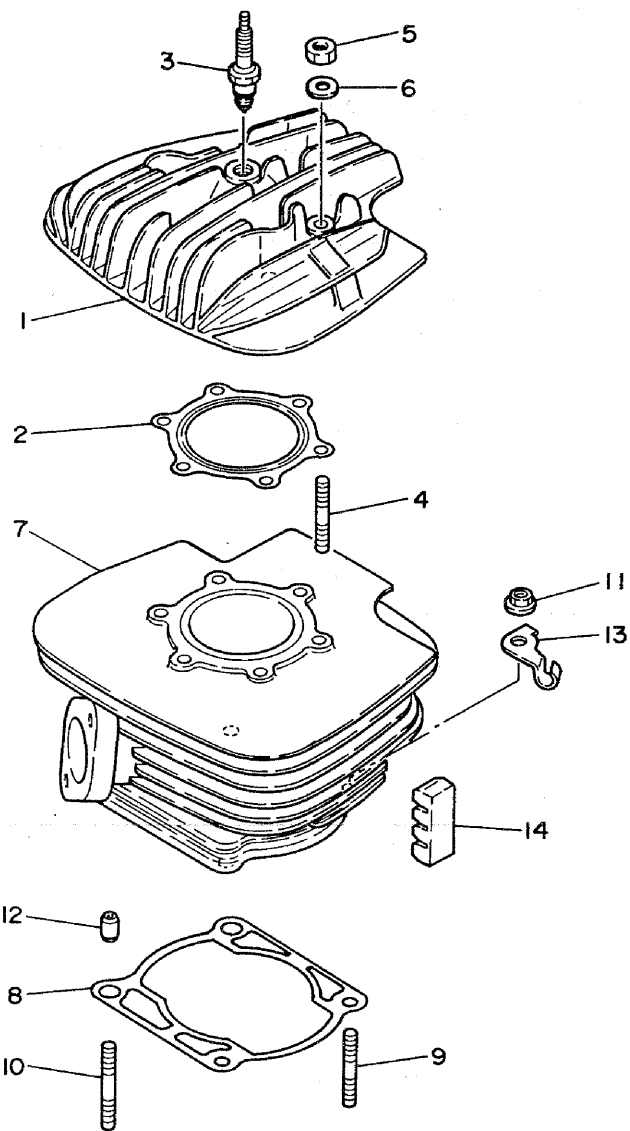


FIG. 1 CYLINDER

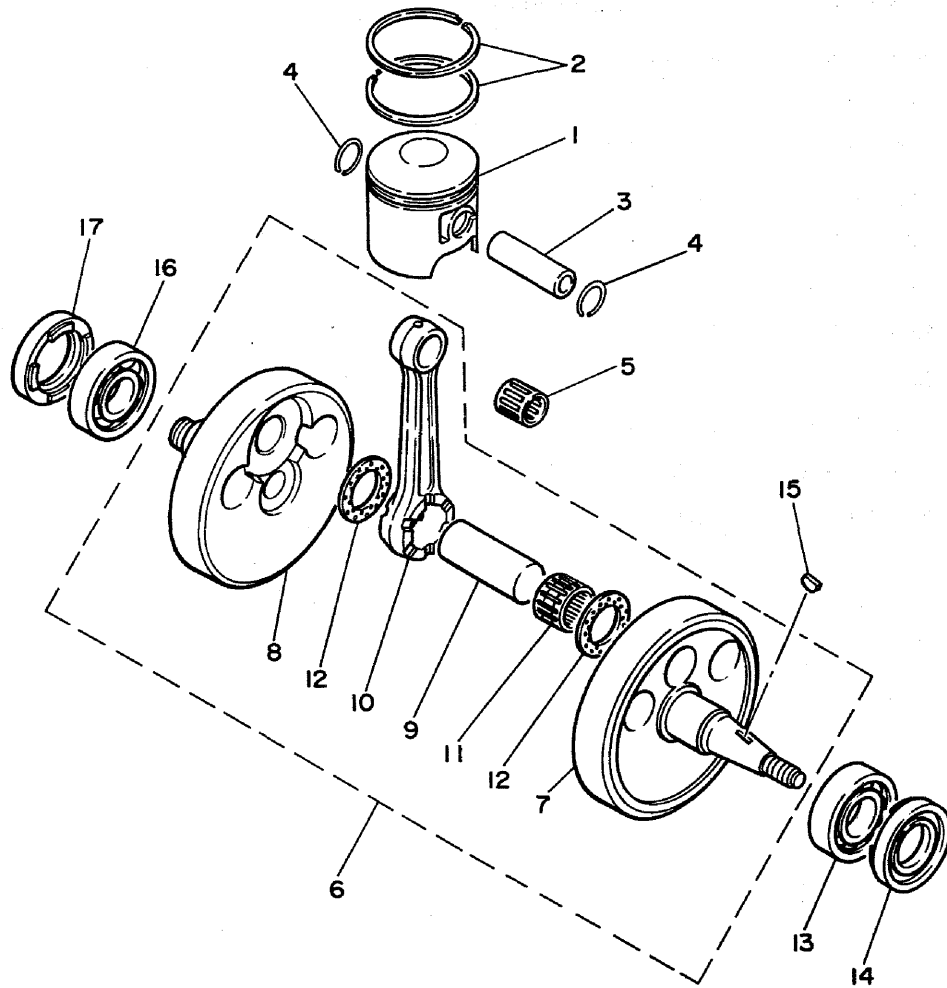
REF. NO.	PART NO.	DESCRIPTION	Q'TY	REMARKS
1	38V-11111-00	HEAD, cylinder 1	1	
2	25Y-11181-00	GASKET, cylinder head 1	1	
3	94701-00111	PLUG, spark (NGK BR6ES)	1	
4	90116-08394	BOLT, stud	6	
5	95301-08600	NUT	6	
6	90201-08649	WASHER, plate	6	
7	38V-11311-00	CYLINDER 1	1	
8	38V-11351-00	GASKET, cylinder	1	
9	90116-10313	BOLT, stud	2	
10	90116-10314	BOLT, stud	2	
11	90179-10292	NUT	4	
12	91830-24016	PIN, dowel	2	
13	38V-1131E-00	HOLDER 1	1	
14	3R6-11162-00	ABSORBER 2	4	



38V010-3010

**B2**

FIG. 2 CRANKSHAFT. PISTON



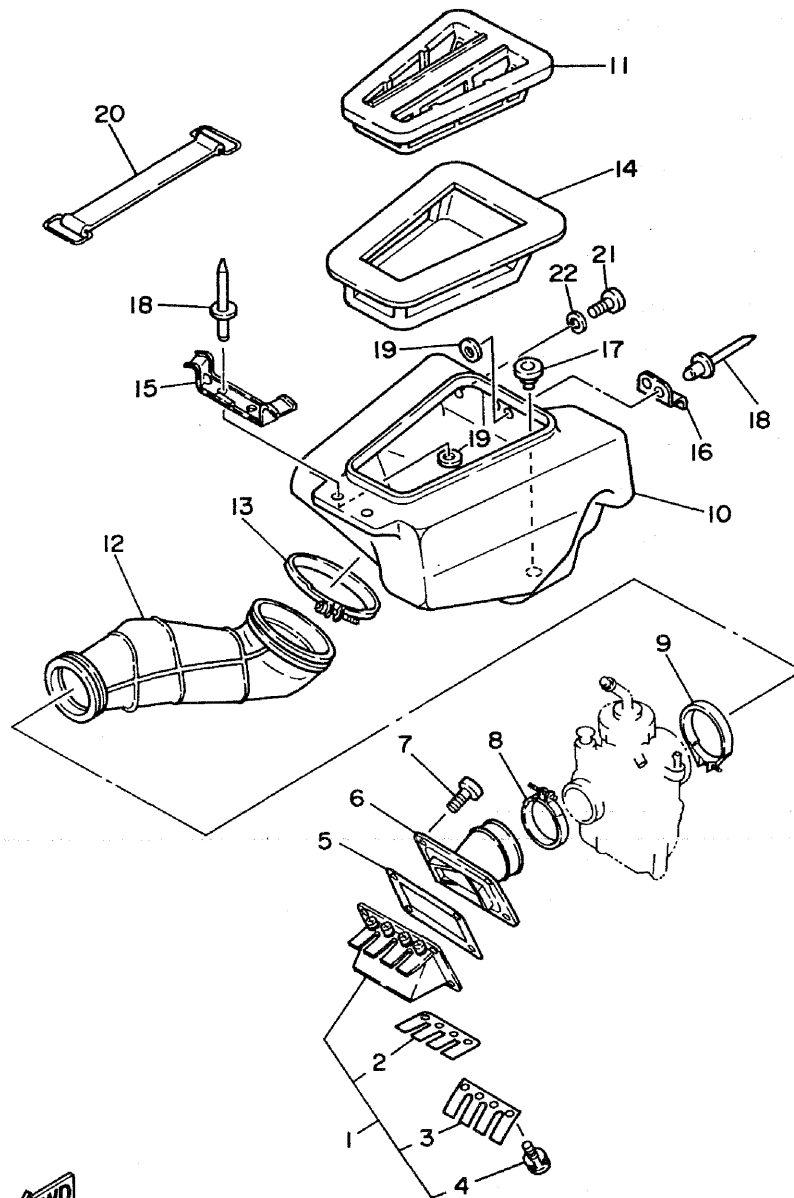
REF. NO.	PART NO.	DESCRIPTION	Q'TY	REMARKS
1	38V-11631-00-96	PISTON (STD)	1	
	38V-11635-00	PISTON (0.25MM O/S)	1	AP
	38V-11636-00	PISTON (0.50MM O/S)	1	AP
	38V-11637-00	PISTON (0.75MM O/S)	1	AP
	38V-11638-00	PISTON (1.00MM O/S)	1	AP
2	25Y-11601-00	PISTON RING SET (STD)	1	
	25Y-11601-10	PISTON RING SET (1ST O/S)	1	AP
	25Y-11601-20	PISTON RING SET (2ND O/S)	1	AP
	25Y-11601-30	PISTON RING SET (3RD O/S)	1	AP
	25Y-11601-40	PISTON RING SET (4TH O/S)	1	AP
3	214-11633-00	PIN, piston	1	
4	93450-19052	CIRCLIP	2	
5	93310-418E9	BEARING, cylindrical	1	
6	38V-11400-00	CRANKSHAFT ASSY	1	
7	38V-11412-00	.CRANK 1	1	
8	38V-11422-00	.CRANK 2	1	
9	3R5-11681-00	.PIN, crank 1	1	
10	24Y-11651-00	.ROD, connecting	1	
11	93310-42541	.BEARING, cylindrical	1	
12	90209-25085	.WASHER	2	
13	93306-20619	BEARING (B6206)	1	
14	93103-30092	OIL SEAL	1	
15	90280-05013	KEY, woodruff	1	
16	93306-20619	BEARING (B6206)	1	
17	93103-40091	OIL SEAL	1	



38V010 - 3020

**B3**

FIG. 3 INTAKE



REF. NO.	PART NO.	DESCRIPTION	Q'TY	REMARKS
1	1M1-13610-10	REED VALVE ASSY	1	
2	1M1-13613-10	.REED, valve	2	
3	1M1-13616-00	.STOPPER, reed valve	2	
4	97602-03108	.SCREW, pan head with washer	8	
5	431-13556-01	GASKET, manifold	1	
6	38V-13565-00	JOINT, carburetor	1	
7	91316-06020	BOLT	4	
8	90460-43053	CLAMP, hose	1	
9	90460-49160	CLAMP, hose	1	
10	38V-14411-00	CASE, air cleaner 1	1	
11	38V-14412-00	CAP, cleaner case 1	1	
12	38V-14453-00	JOINT, air cleaner 1	1	
13	90460-01186	CLAMP, hose	1	
14	38V-14451-00	ELEMENT, air cleaner	1	
15	38V-14493-00	STAY 1	1	
16	26A-14436-00	HOOK	1	
17	90480-09211	GROMMET	1	
18	90267-40029	RIVET, blind	4	
19	92901-04200	WASHER, plain	4	
20	133-82131-00	BAND, battery	1	
21	92501-06012	SCREW, pan head	1	
22	92901-06100	WASHER, spring	1	

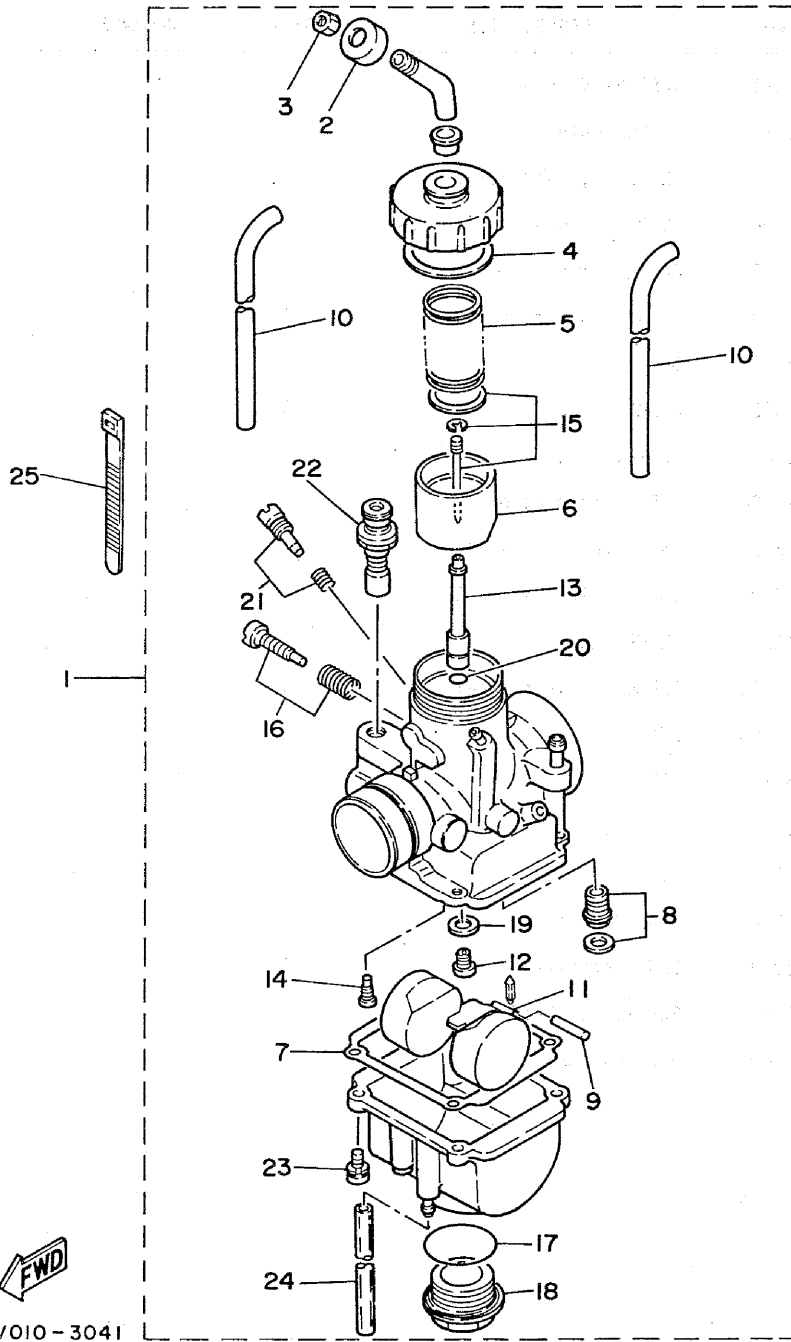


38V010-3030

**B4**

FIG. 4 CARBURETOR

REF. NO.	PART NO.	DESCRIPTION	Q'TY	REMARKS
1	44J-14301-00	CARBURETOR ASSY 1	1	
2	15A-14118-00	.CAP	1	
3	288-14161-00	.NUT, cable adjusting	1	
4	434-14126-00	.GASKET	1	
5	434-14331-00	.SPRING, throttle valve	1	
6	38V-14312-25	.VALVE, throttle 1	1	
7	434-14384-00	.GASKET, float chamber	1	
8	38V-14107-00	.NEEDLE VALVE SET	1	
9	647-14386-00	.PIN, float	1	
10	38V-14349-00	.PIPE	2	
11	38V-14385-00	.FLOAT	1	
12	288-14343-70	.JET, main (#140)	1	UR STD
	288-14343-65	.JET, main (#130)	1	UR
	288-14343-75	.JET, main (#150)	1	UR
13	38V-14341-00	.NOZZLE, main	1	
14	38V-14342-24	.JET, pilot (# 48)	1	UR STD
	38V-14342-23	.JET, pilot (# 46)	1	UR
	38V-14342-25	.JET, pilot (# 50)	1	UR
15	38V-1490J-00	.NEEDLE SET	1	
16	38V-14103-00	.THROTTLE SCREW SET	1	
17	23V-14397-00	.O-RING	1	
18	38V-14191-00	.PLUG, drain	1	
19	38V-14153-00	.WASHER, main jet	1	
20	360-24512-00	.GASKET	1	
21	38V-14104-00	.AIR SCREW SET	1	
22	38V-14371-00	.PLUNGER, starter	1	
23	97601-01441	.SCREW, pan head with washer	4	
24	38V-14396-00	.PIPE	1	



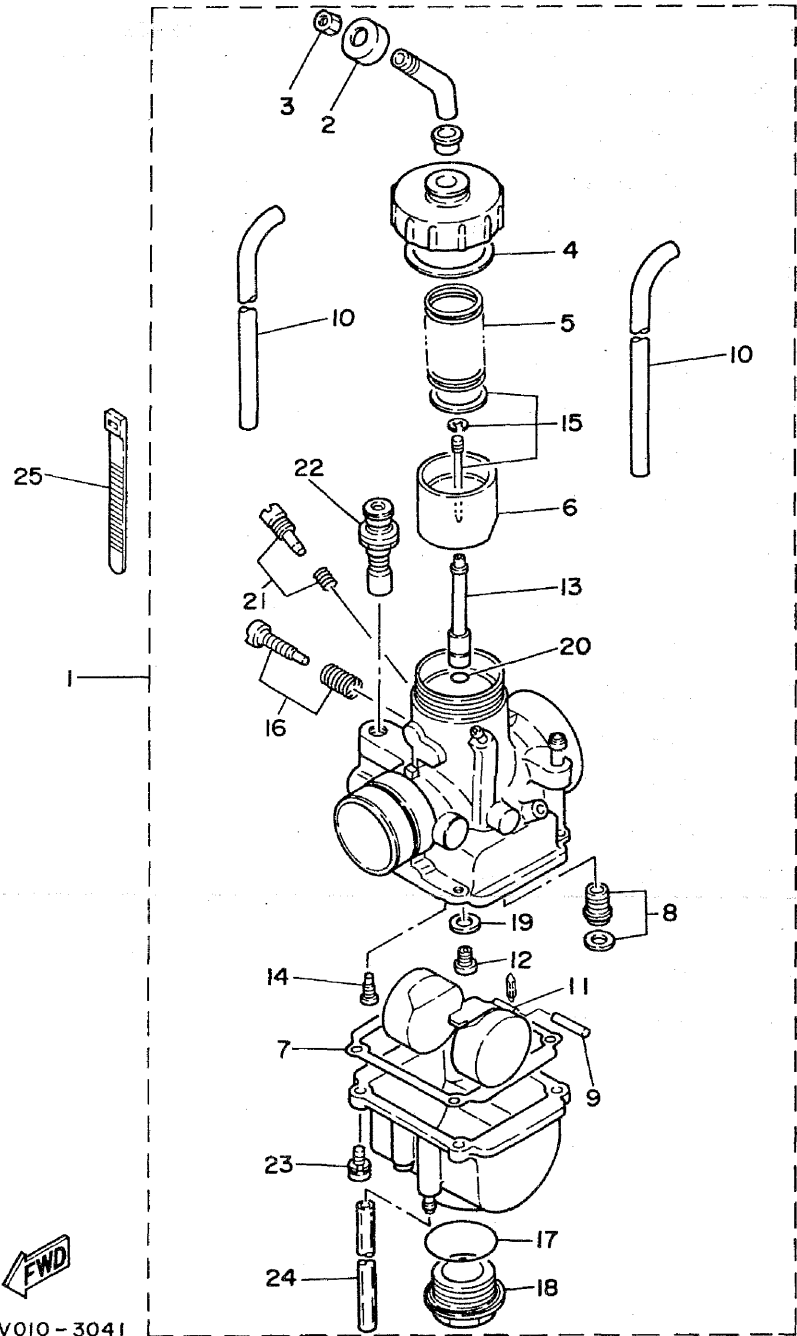
38V010 - 3041

**B5**



FIG. 4 CARBURETOR

REF. NO.	PART NO.	DESCRIPTION	Q'TY	REMARKS
25	5Y9-12491-00	CLAMP 1	1	



38V010 - 3041



**B6**

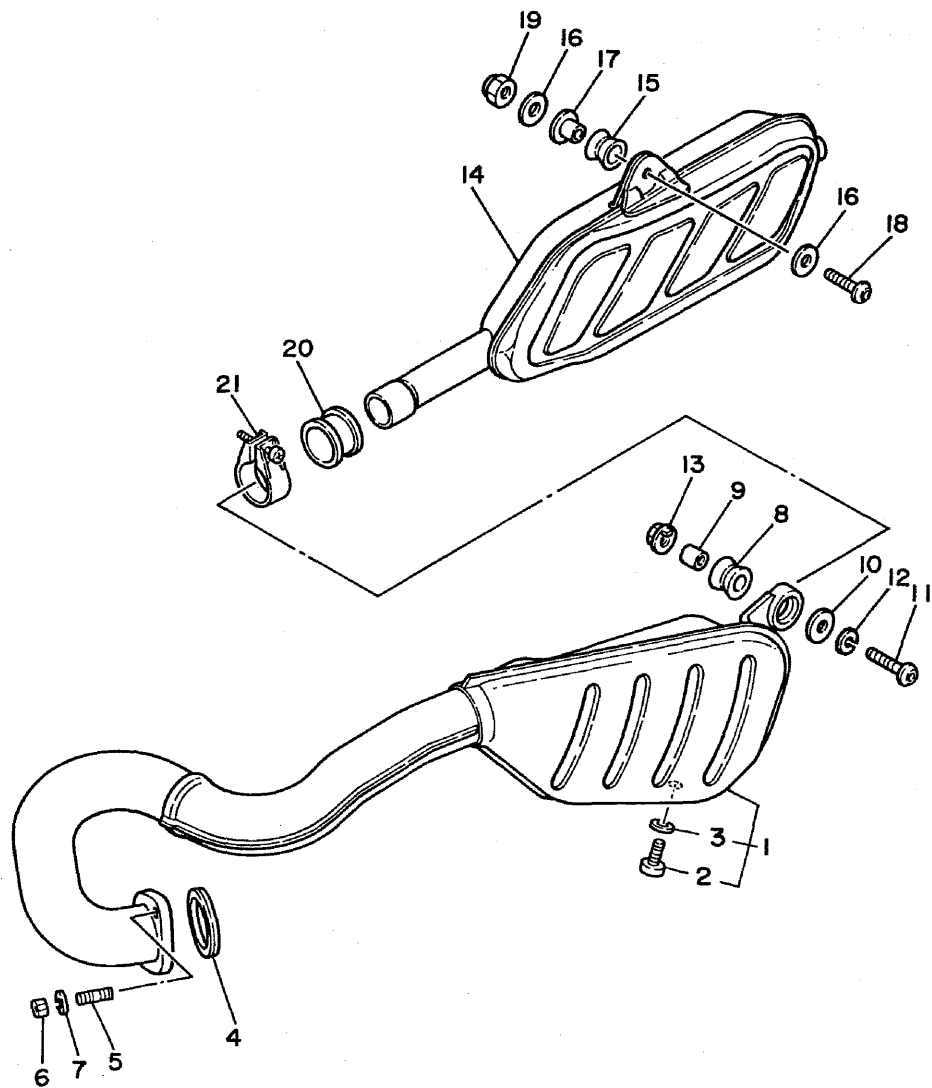


FIG. 5 EXHAUST

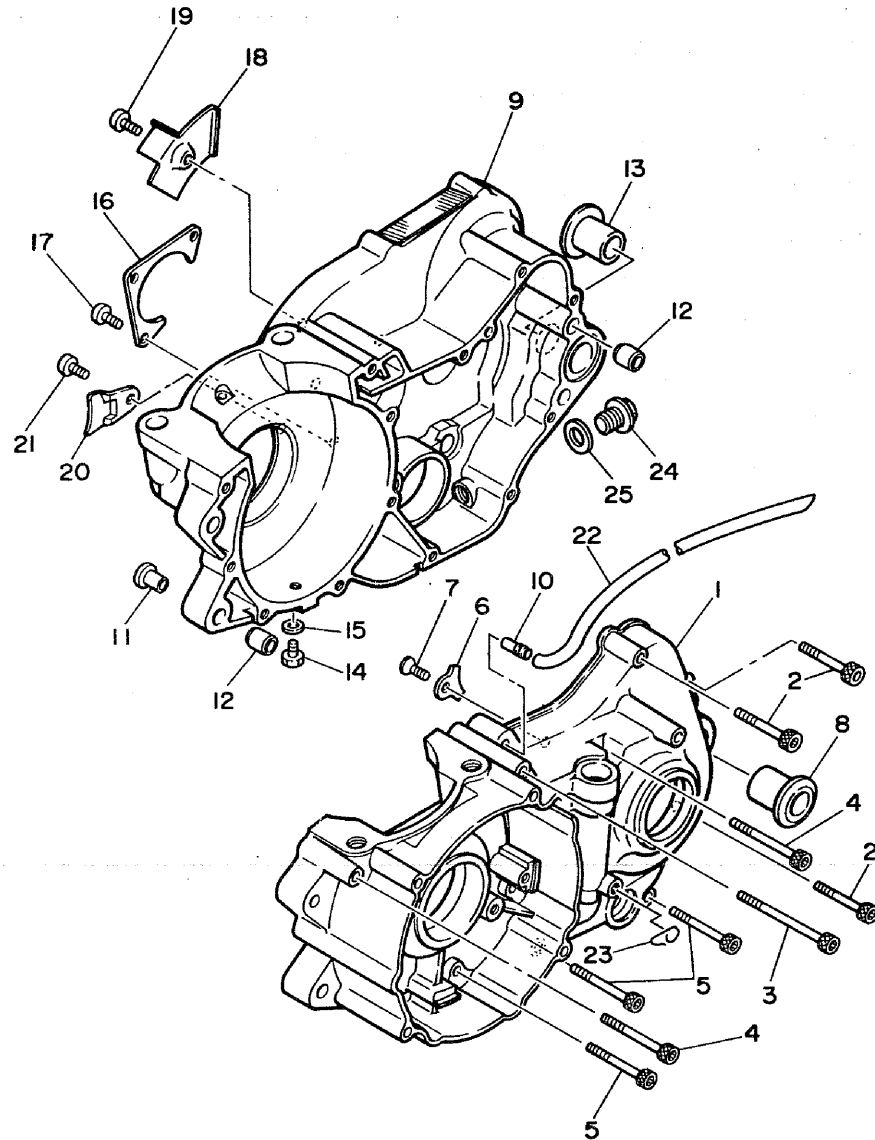
REF. NO.	PART NO.	DESCRIPTION	Q'TY	REMARKS
1	38V-14610-00	EXHAUST PIPE ASSY 1	1	
2	98906-06008	.SCREW, bind	1	
3	90202-06010	.WASHER, plate	1	
4	38V-14613-00	GASKET, exhaust pipe	1	
5	90116-08042	BOLT, stud	2	
6	95301-08600	NUT	2	
7	92901-08100	WASHER, spring	2	
8	565-14747-00	DAMPER, muffler	1	
9	90387-08258	COLLAR	1	
10	90201-08795	WASHER, plate	1	
11	90110-08071	BOLT, hexagon socket head	1	
12	92901-08100	WASHER, spring	1	
13	38V-14681-00	NUT	1	
14	38V-14750-00	SILENCER ASSY	1	
15	565-14747-00	DAMPER, muffler	1	
16	90201-08113	WASHER, plate	2	
17	90387-081K6	COLLAR	1	
18	90110-08071	BOLT, hexagon socket head	1	
19	95601-08100	NUT, u	1	
20	5X8-14714-00	GASKET, muffler	1	
21	90460-39202	CLAMP, hose	1	



38V010-3051

**B7**

FIG. 6 CRANKCASE



REF. NO.	PART NO.	DESCRIPTION	Q'TY	REMARKS
1	38V-15111-00	CRANKCASE 1	1	
2	91316-06040	BOLT	3	
3	91316-06070	BOLT	1	
4	91316-06055	BOLT	2	
5	91316-06045	BOLT	7	
6	3R4-15383-01	PLATE, bearing cover	1	
7	92701-06012	SCREW, flat head	1	
8	90387-160H4	COLLAR	1	
9	38V-15121-00	CRANKCASE 2	1	
10	137-13115-00	CONNECTOR, suction pipe	1	
11	90338-07011	PLUG	1	
12	91810-05016	PIN, dowel	4	
13	90387-160H4	COLLAR	1	
14	90101-06529	BOLT	1	
15	90430-06017	GASKET	1	
16	23X-15381-00	PLATE, bearing cover	1	
17	92501-06012	SCREW, pan head	3	
18	3R4-15118-00	HOLDER	1	
19	92501-08010	SCREW, pan head	1	
20	5X5-15113-00	PLATE	1	
21	92501-06012	SCREW, pan head	1	
22	90445-081A0	HOSE	1	
23	90465-20035	CLAMP	1	
24	90340-12095	PLUG, straight screw	1	
25	90430-12038	GASKET	1	

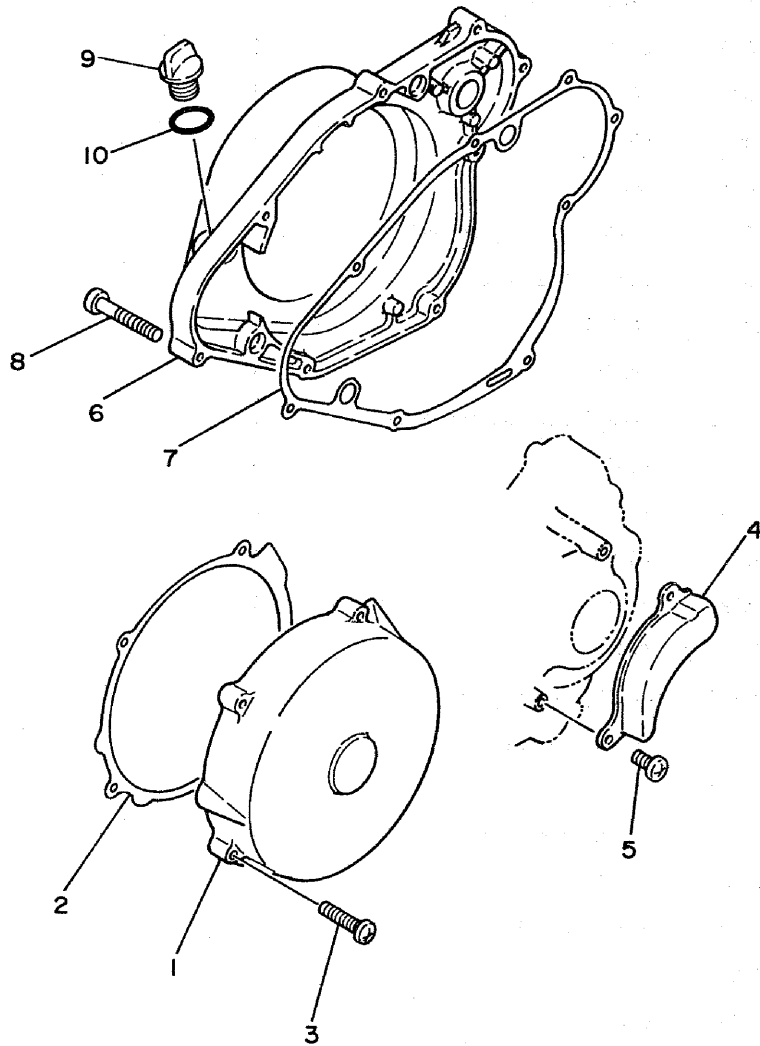


38V010-3060

**B8**

FIG. 7 CRANKCASE COVER 1

REF. NO.	PART NO.	DESCRIPTION	Q'TY	REMARKS
1	38V-15411-00	COVER, crankcase 1	1	
2	38V-15451-00	GASKET, crankcase cover 1	1	
3	92506-06025	SCREW, pan head	4	
4	38V-15421-00	COVER, crankcase 2	1	
5	92506-06012	SCREW, pan head	2	
6	38V-15431-00	COVER, crankcase 3	1	
7	38V-15462-00	GASKET, crankcase cover 3	1	
8	92506-06035	SCREW, pan head	8	
9	168-15362-00	PLUG, oil level	1	
10	93210-14104	O-RING	1	

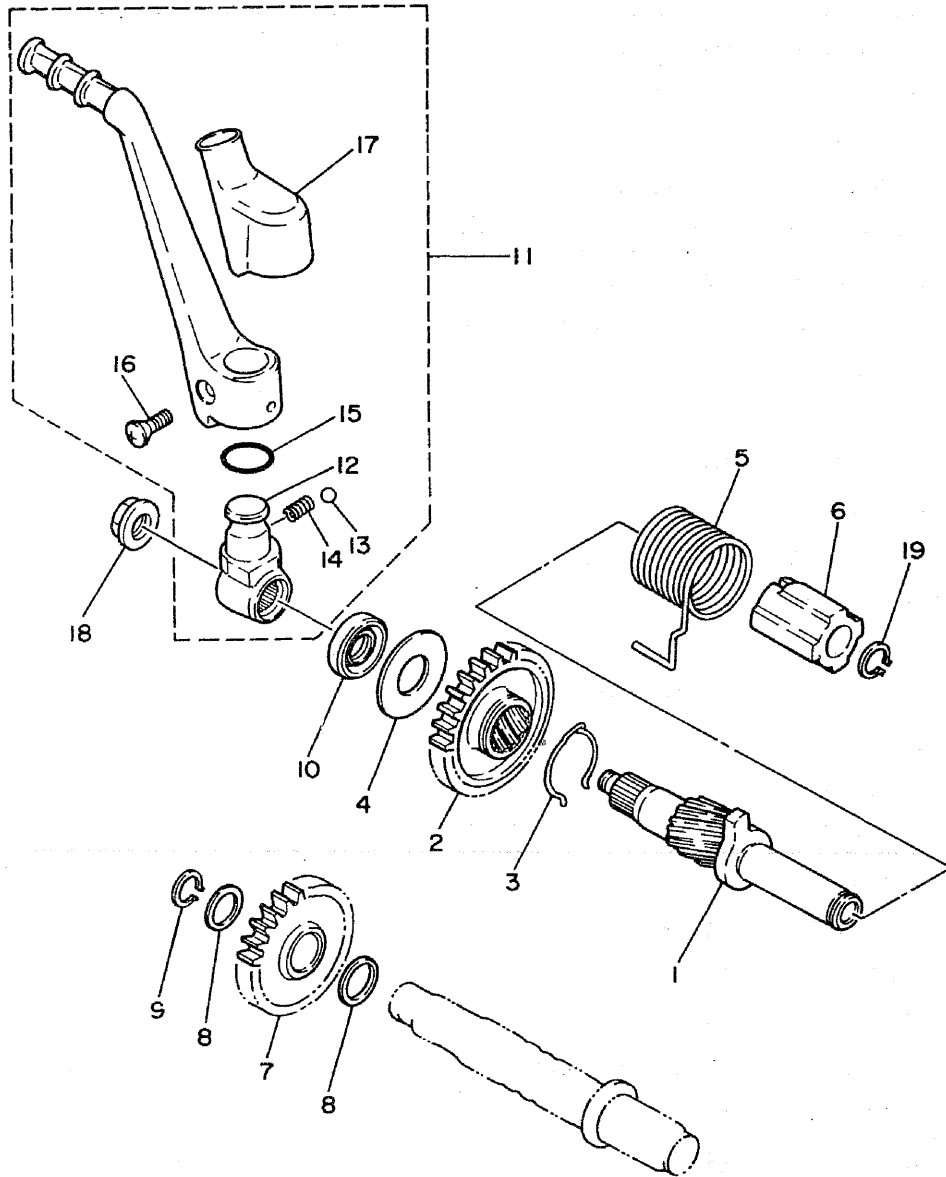


38V010-3070

**B9**

FIG. 8 STARTER

REF. NO.	PART NO.	DESCRIPTION	Q'TY	REMARKS
1	38V-15660-00	KICK AXLE ASSY	1	
2	38V-15641-00	GEAR, kick (13T)	1	
3	90468-26048	CLIP	1	
4	90201-20358	WASHER, plate	1	
5	90508-30632	SPRING, torsion	1	
6	38V-15664-00	GUIDE, spring	1	
7	38V-15651-00	GEAR, kick idle (23T)	1	
8	90201-17545	WASHER, plate	2	
9	93410-17008	CIRCLIP	1	
10	93102-20309	OIL SEAL	1	
11	38V-15620-01	KICK CRANK ASSY	1	
12	38V-15621-00	.BOSS, kick crank	1	
13	93501-04011	.BALL	1	
14	90501-13720	.SPRING, compression	1	
15	93210-19501	.O-RING	1	
16	90152-06010	.SCREW, countersunk	1	
17	24Y-15618-00	.COVER, kick lever	1	
18	90179-12244	NUT	1	
19	93410-17037	CIRCLIP	1	

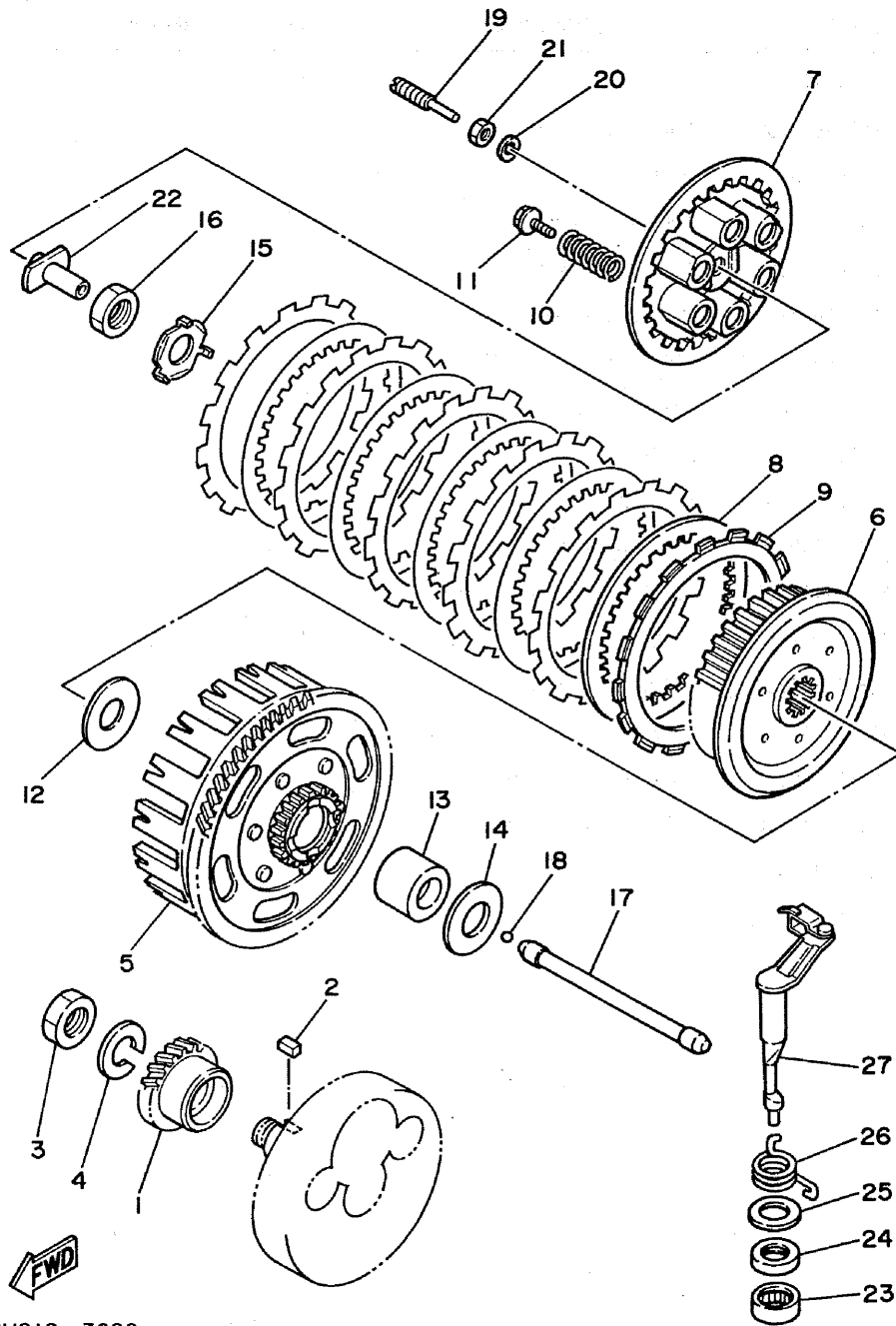


38V010-3080

**B10**

FIG. 9 CLUTCH

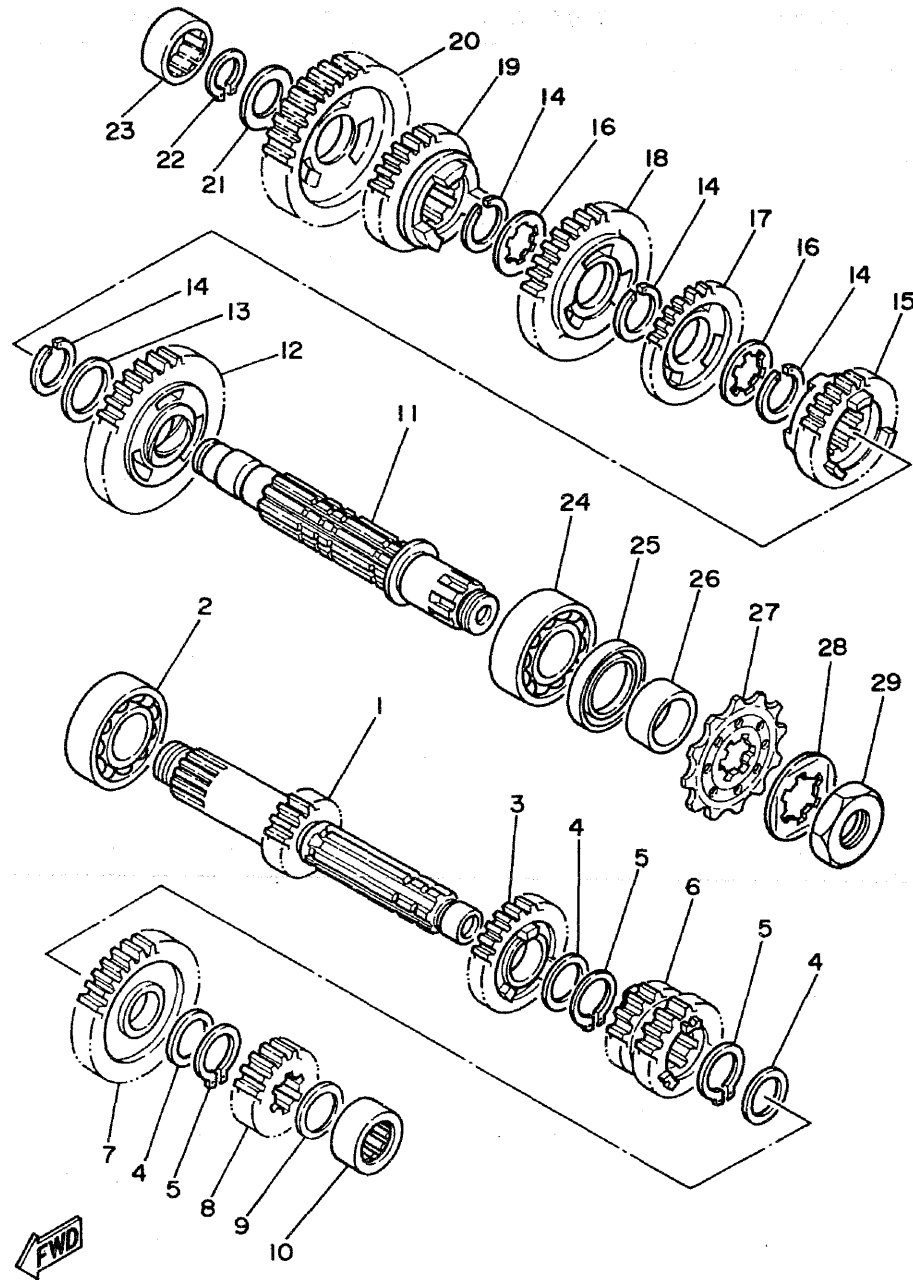
REF. NO.	PART NO.	DESCRIPTION	Q'TY	REMARKS
1	38V-16111-00	GEAR, primary drive	1	
2	90282-07019	KEY, straight	1	
3	90170-18089	NUT	1	
4	92901-18100	WASHER, spring	1	
5	38V-16150-00	PRIMARY DRIVEN GEAR COMP.	1	
6	38V-16371-00	BOSS, clutch	1	
7	38V-16351-00	PLATE, pressure 1	1	
8	168-16325-00	PLATE, clutch 2	5	
9	5X5-16321-00	PLATE, friction	6	
10	90501-230A5	SPRING, compression	6	
11	90159-06016	SCREW, with washer	6	
12	2K7-16154-00	PLATE, thrust 1	1	
13	2K7-16181-00	SPACER 1	1	
14	2K7-16154-00	PLATE, thrust 1	1	
15	90215-20212	WASHER, lock	1	
16	90170-20255	NUT	1	
17	2K7-16357-01	ROD, push 2	1	
18	93515-32029	BALL	1	
19	90149-06123	SCREW	1	
20	92901-06100	WASHER, spring	1	
21	95301-06600	NUT	1	
22	23X-16356-00	ROD, push 1	1	
23	93315-21721	BEARING, cylindrical	1	
24	93102-17263	OIL SEAL	1	
25	90201-17327	WASHER, plate	1	
26	90508-14664	SPRING, torsion	1	
27	38V-16380-00	PUSH LEVER ASSY	1	



38V010-3090

**B11**

FIG. 10 TRANSMISSION



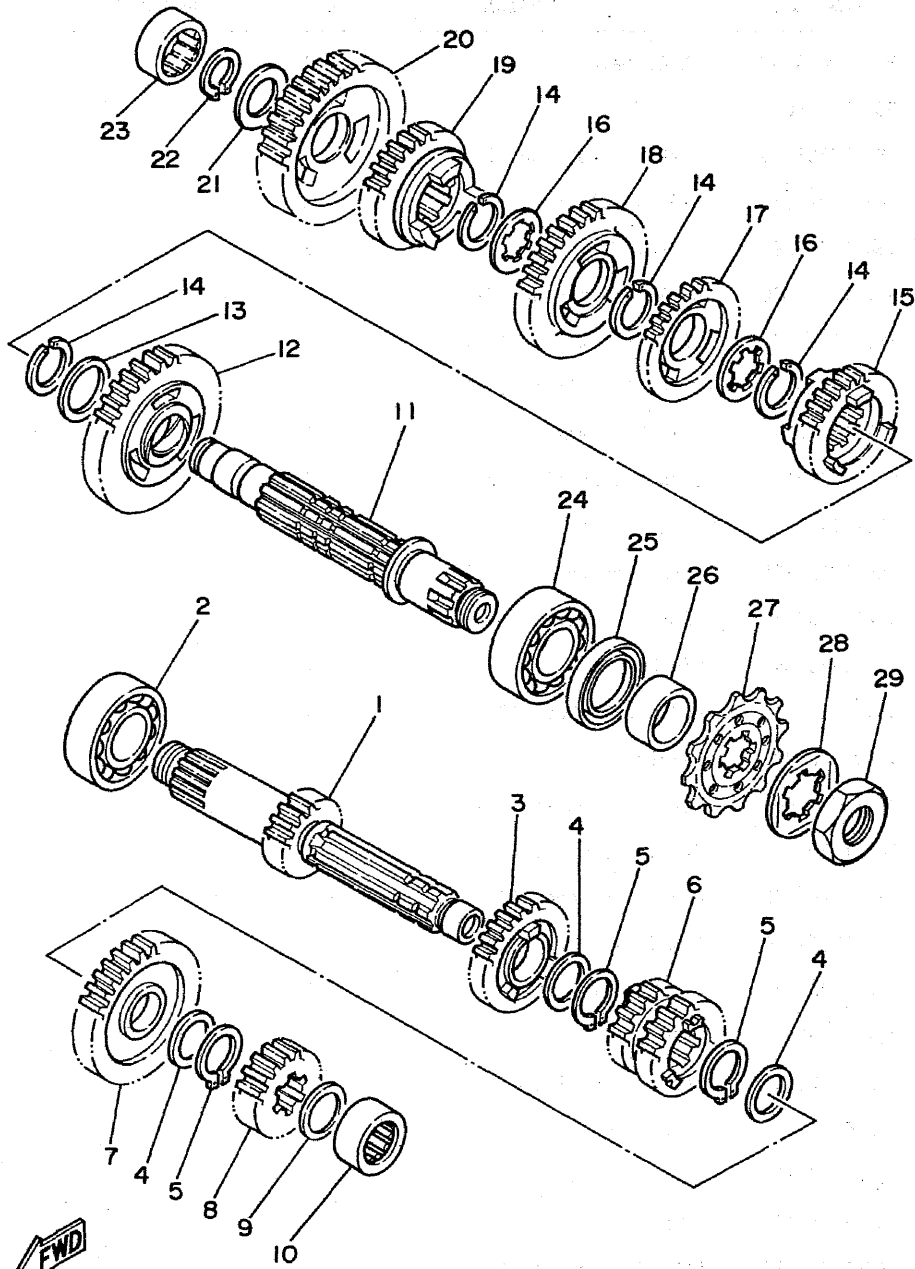
REF. NO.	PART NO.	DESCRIPTION	Q'TY	REMARKS
1	38V-17411-00	AXLE, main	1	
2	93300-20501	BEARING	1	
3	38V-17151-00	GEAR, 5th pinion (27T)	1	
4	90201-22555	WASHER, plate	3	
5	93410-22039	CIRCLIP	3	
6	38V-17131-00	GEAR, 3rd pinion (22T)	1	
7	38V-17161-00	GEAR, 6th pinion (31T)	1	
8	38V-17121-00	GEAR, 2nd pinion (15T)	1	
9	90201-17255	WASHER, plate	1	
10	93311-41734	BEARING, cylindrical	1	
11	38V-17421-00	AXLE, drive	1	
12	38V-17221-00	GEAR, 2nd wheel (37T)	1	
13	90201-25287	WASHER, plate	1	
14	93440-25084	CIRCLIP	4	
15	38V-17261-00	GEAR, 6th wheel (21T)	1	
16	90209-22082	WASHER	2	
17	38V-17241-00	GEAR, 4th wheel (31T)	1	
18	38V-17231-00	GEAR, 3rd wheel (31T)	1	
19	38V-17251-00	GEAR, 5th wheel (26T)	1	
20	38V-17211-00	GEAR, 1st wheel (39T)	1	
21	90201-20278	WASHER, plate	1	
22	93410-20038	CIRCLIP	1	
23	93311-62035	BEARING, cylindrical	1	
24	93300-20501	BEARING	1	
25	93102-32136	OIL SEAL	1	
26	90387-250K3	COLLAR	1	
27	38V-17461-20	SPROCKET, drive (12T)	1	
28	90215-21239	WASHER, lock	1	

38V010-3100

**B12**

FIG. 10 TRANSMISSION

REF. NO.	PART NO.	DESCRIPTION	Q'TY	REMARKS
29	90179-20255	NUT	1	



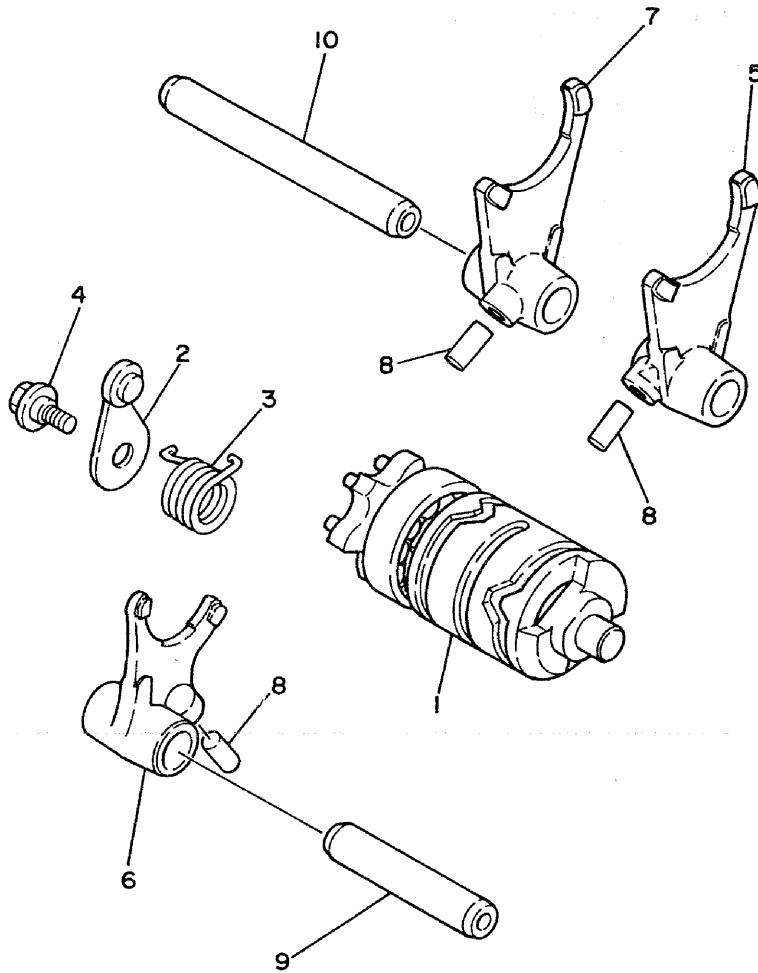
38V010-3100

**B13**



FIG. 11 SHIFT CAM. FORK

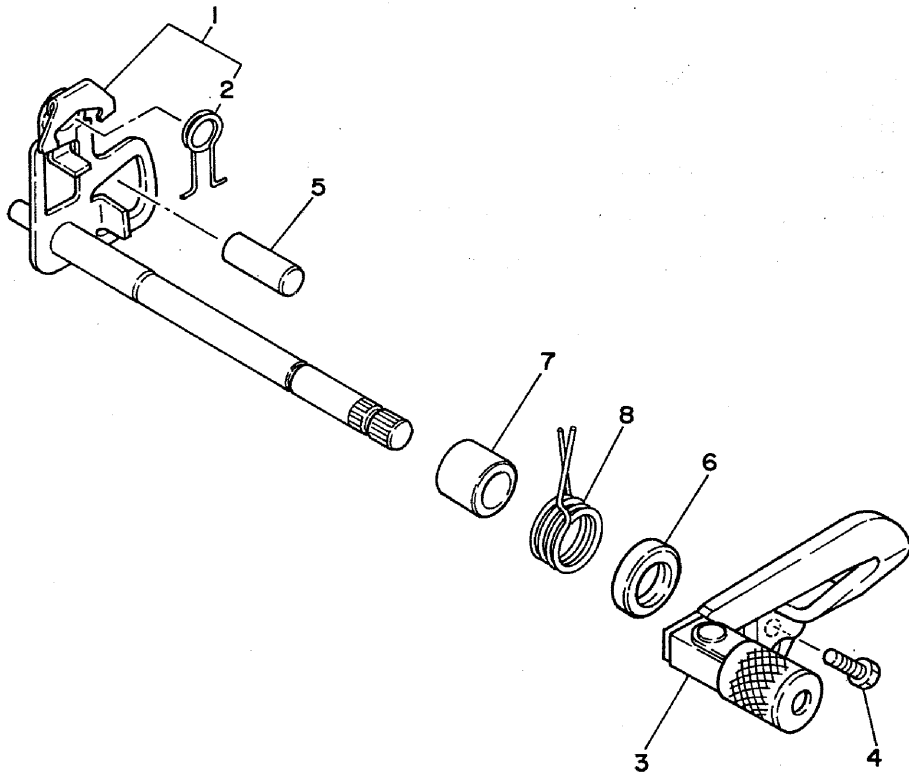
REF. NO.	PART NO.	DESCRIPTION	Q'TY	REMARKS
1	38V-18540-00	SHIFT CAM ASSY	1	
2	3R4-18140-00	STOPPER LEVER ASSY	1	
3	90508-26421	SPRING, torsion	1	
4	1W1-18177-00	BOLT, stopper	1	
5	38V-18511-00	FORK, shift 1	1	
6	38V-18512-00	FORK, shift 2	1	
7	38V-18513-00	FORK, shift 3	1	
8	93606-14154	PIN, dowel	3	
9	5X5-18531-01	BAR, shift fork guide 1	1	
10	5X5-18535-01	BAR, shift fork guide 2	1	



38V010-3110

**B14**

FIG. 12 SHIFT SHAFT



REF. NO.	PART NO.	DESCRIPTION	Q'TY	REMARKS
1	38V-18101-00	SHIFT SHAFT ASSY	1	
2	90508-10514	.SPRING, torsion	1	
3	44J-18110-00	SHIFT PEDAL ASSY	1	
4	97321-06020	BOLT	1	
5	93608-25150	PIN, dowel	1	
6	93101-12004	OIL SEAL	1	
7	90560-12171	SPACER	1	
8	90508-29361	SPRING, torsion	1	

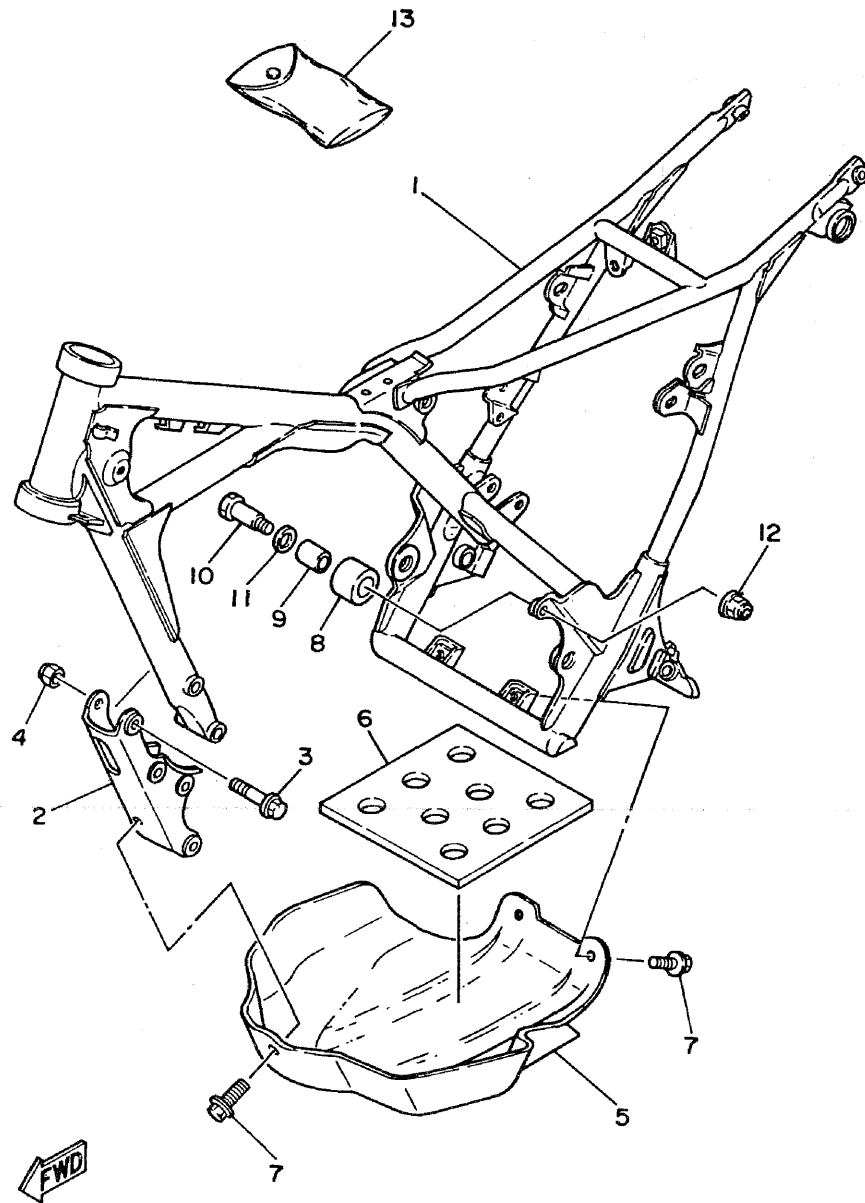


44H171-4120

**B15**

FIG. 13 FRAME

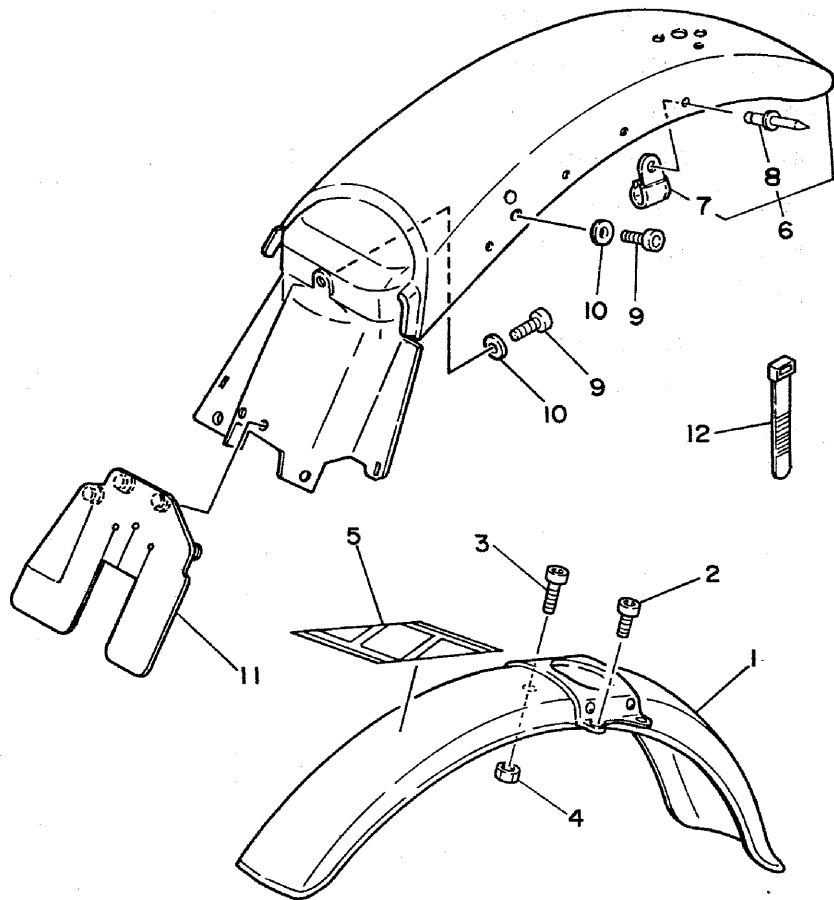
REF. NO.	PART NO.	DESCRIPTION	Q'TY	REMARKS
1	44J-21110-00-FH	FRAME COMP.	1	fire red
2	38V-21316-00-FH	STAY, engine 3	1	fire red
3	95811-08065	BOLT, flange	4	
4	90185-08113	NUT, self-locking	4	
5	38V-21471-00	PROTECTOR, engine	1	
6	38V-21485-00	DAMPER, rubber 1	1	
7	95811-08016	BOLT, flange	3	
8	22W-22178-01	TENSIONER	1	
9	4V4-22184-00	BUSH	1	
10	90109-08705	BOLT	1	
11	90201-13202	WASHER, plate	1	
12	90185-08106	NUT, self-locking	1	
13	38V-28100-00	TOOL KIT	1	



44H171-4130

FIG. 14 FENDER

REF. NO.	PART NO.	DESCRIPTION	Q'TY	REMARKS
1	38V-21510-00	FRONT FENDER COMP.	1	
2	90157-06025	SCREW, pan head	3	
3	90149-06167	SCREW	1	
4	95601-06100	NUT, u	1	
5	38V-21575-00	SEAL 1	1	
6	44J-21610-00	REAR FENDER COMP.	1	
7	90465-08261	.CLAMP	4	
8	90267-32119	.RIVET, blind	5	
9	90157-06025	SCREW, pan head	3	
10	90201-06571	WASHER, plate	3	
11	38V-21621-00	FLAP	1	
12	5Y9-12491-00	CLAMP 1	2	

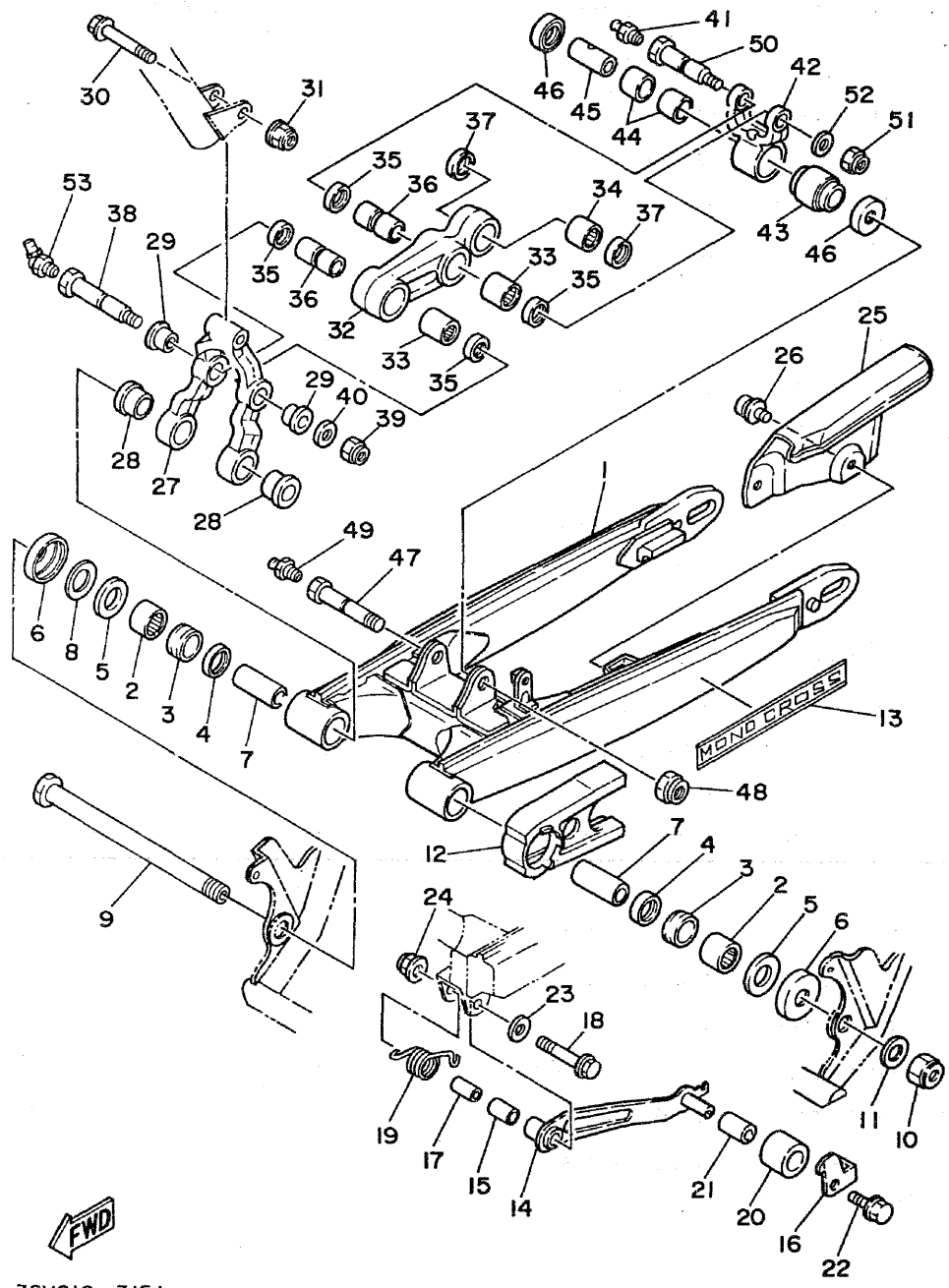


44H171-4140

C3

FIG. 15 REAR ARM

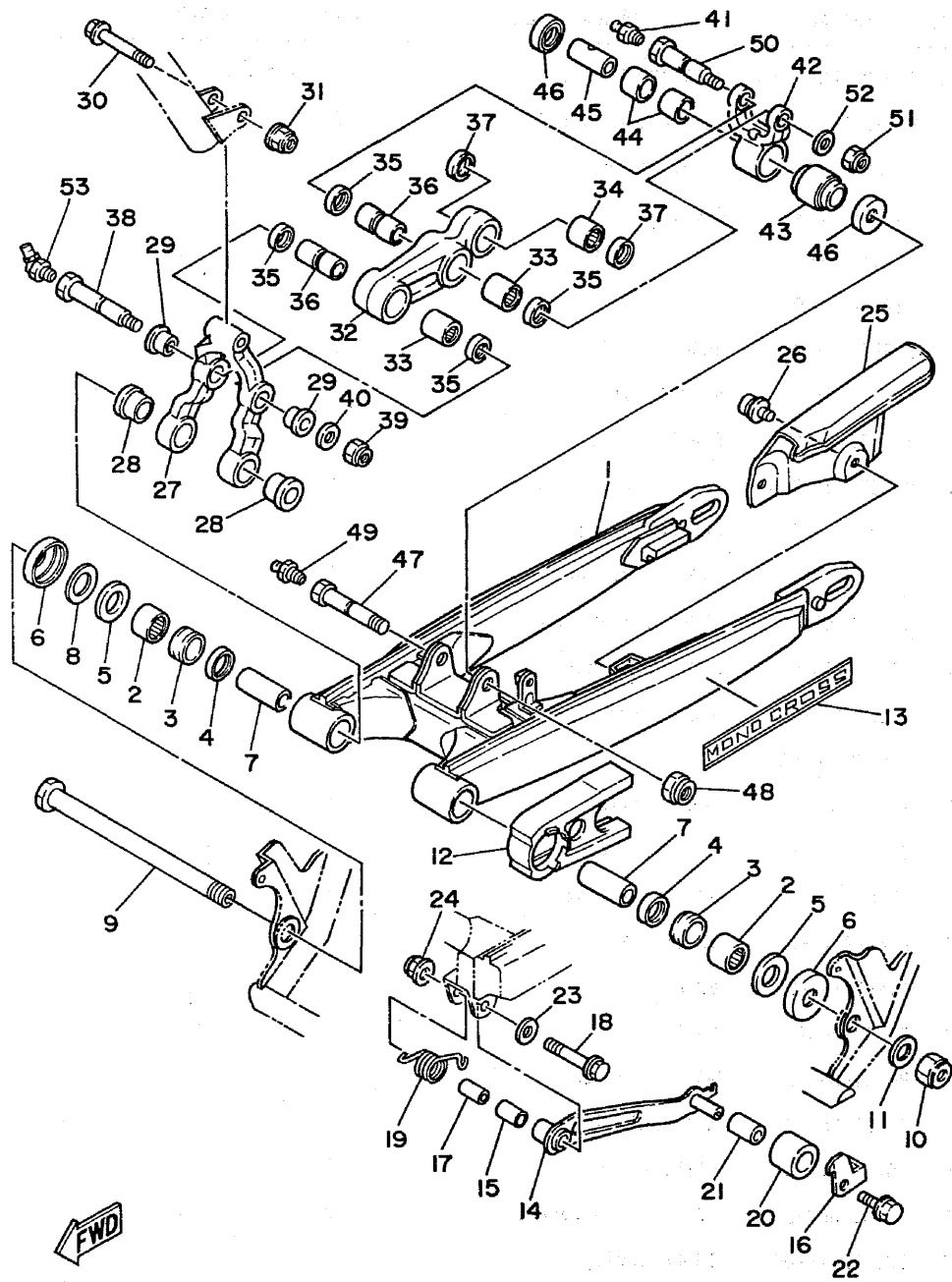
REF. NO.	PART NO.	DESCRIPTION	Q'TY	REMARKS
1	38V-22110-00-FH	REAR ARM COMP.	1	fire red
2	93317-32231	BEARING, cylindrical	2	
3	90380-22111	BUSH, solid	2	
4	93106-22019	OIL SEAL	2	
5	90201-222F4	WASHER, plate	2	
6	322-22128-01	COVER, thrust I	2	
7	90380-16134	BUSH, solid	2	
8	156-22127-00	SHIM (0.3T)	1	
9	5X4-22141-01	SHAFT, pivot	1	
10	90185-16127	NUT, self-locking	1	
11	90201-160F6	WASHER, plate	1	
12	38V-22147-00	PROTECTOR, chain	1	
13	38V-2218A-00	EMBLEM, rear arm	2	
14	38V-22179-01	ARM, tensioner	1	
15	90384-12097	BUSH, bimetal formed	1	
16	38V-2217M-00	ARM 1	1	
17	90380-08136	BUSH, solid	1	
18	95802-08016	BOLT, flange	1	
19	90508-35633	SPRING, torsion	1	
20	22W-22178-01	TENSIONER	1	
21	4V4-22184-00	BUSH	1	
22	90101-08428	BOLT	1	
23	90201-08092	WASHER, plate	1	
24	90185-08113	NUT, self-locking	1	
25	38V-22311-00	CASE, chain	1	
26	90159-06032	SCREW, with washer	2	
27	38V-2217Y-00	BRACET, relay	1	
28	90381-16052	BUSH, solid	2	



38V010-3151

**C4**

FIG. 15 REAR ARM



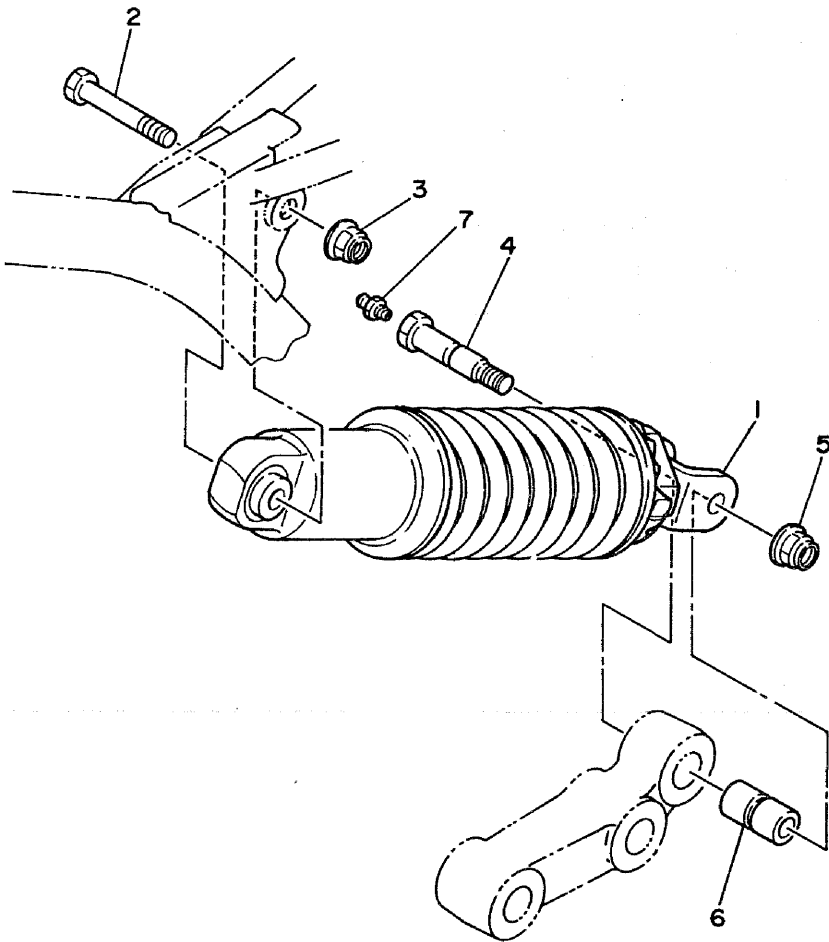
REF. NO.	PART NO.	DESCRIPTION	Q'TY	REMARKS
29	90381-12051	BUSH, solid	2	
30	90105-08292	BOLT, washer based	1	
31	90185-08113	NUT, self-locking	1	
32	38V-2217A-00	ARM, relay	1	
33	93315-31732	BEARING, cylindrical	2	
34	93317-21647	BEARING, cylindrical	1	
35	93109-17048	OIL SEAL	4	
36	90380-12135	BUSH, solid	2	
37	93109-16035	OIL SEAL	2	
38	90109-10702	BOLT	1	
39	90185-10120	NUT, self-locking	1	
40	90201-10430	WASHER, plate	1	
41	93700-06004	NIPPLE, grease	1	
42	38V-2217F-00	ROD, connecting 1	1	
43	5X6-22226-00	BUSH, shock absorber lower	1	
44	90384-18157	BUSH, bimetal formed	2	
45	90380-12094	BUSH, solid	1	
46	5X6-22129-00	COVER, thrust 2	2	
47	90101-12597	BOLT	1	
48	90185-12061	NUT, self-locking	1	
49	93700-06004	NIPPLE, grease	1	
50	90101-10598	BOLT	1	
51	90185-10120	NUT, self-locking	1	
52	90201-10430	WASHER, plate	1	
53	93700-06005	NIPPLE, grease	1	

38V010-3151

C5

FIG. 16 REAR SUSPENSION

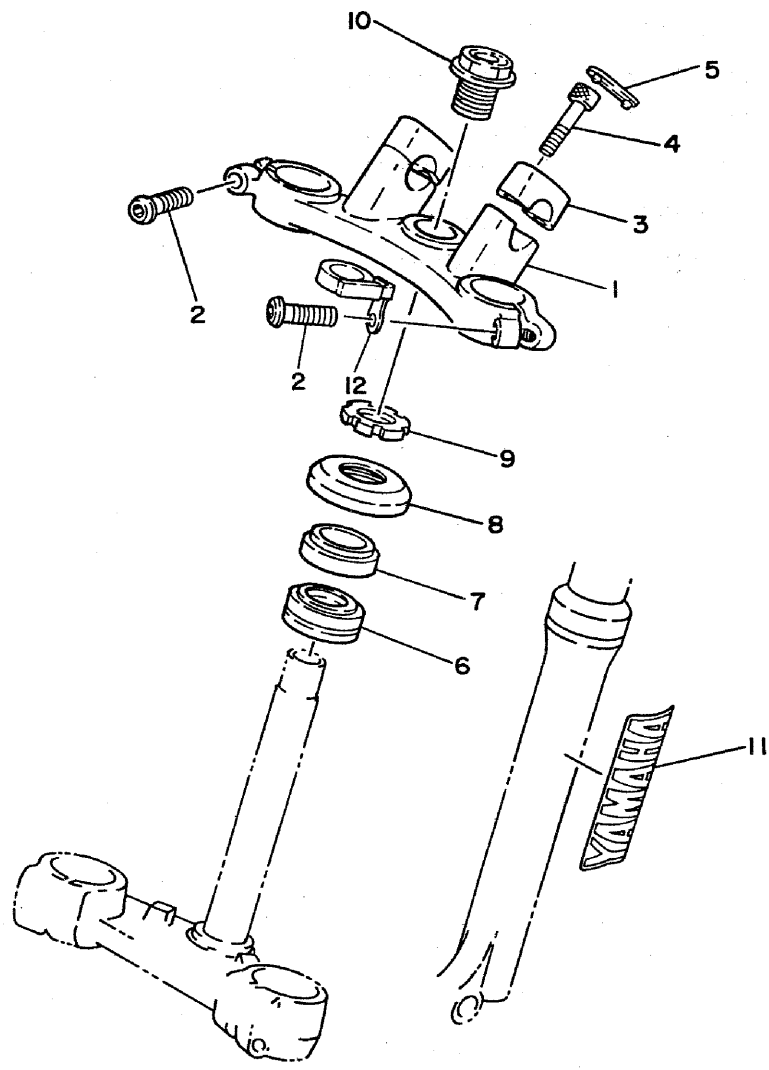
REF. NO.	PART NO.	DESCRIPTION	Q'TY	REMARKS
1	38V-22210-00-6W	SHOCK ABSORBER ASSY, rear	1	native red
2	90109-08793	BOLT	1	
3	90185-08113	NUT, self-locking	1	
4	90101-08599	BOLT	1	
5	90185-08113	NUT, self-locking	1	
6	90380-10137	BUSH, solid	1	
7	93700-06004	NIPPLE, grease	1	



38V010-3160

C6

FIG. 17 STEERING



REF. NO.	PART NO.	DESCRIPTION	Q'TY	REMARKS
1	38V-23435-00-38	CROWN, handle	1	clear buffing
2	90110-08071	BOLT, hexagon socket head	2	
3	4H7-23441-00-38	HOLDER, handle upper	2	clear buffing
4	91316-08030	BOLT	4	
5	5K5-23469-00	CAP, bolt	2	
6	93332-00059	BEARING	1	
7	93332-00023	BEARING	1	
8	1W1-23416-00	COVER, ball race 2	1	
9	90179-25451	NUT	1	
10	90105-14137	BOLT, washer based	1	
11	38V-21784-00	EMBLEM 4	2	
12	5X2-23317-00	HOLDER, cable	1	

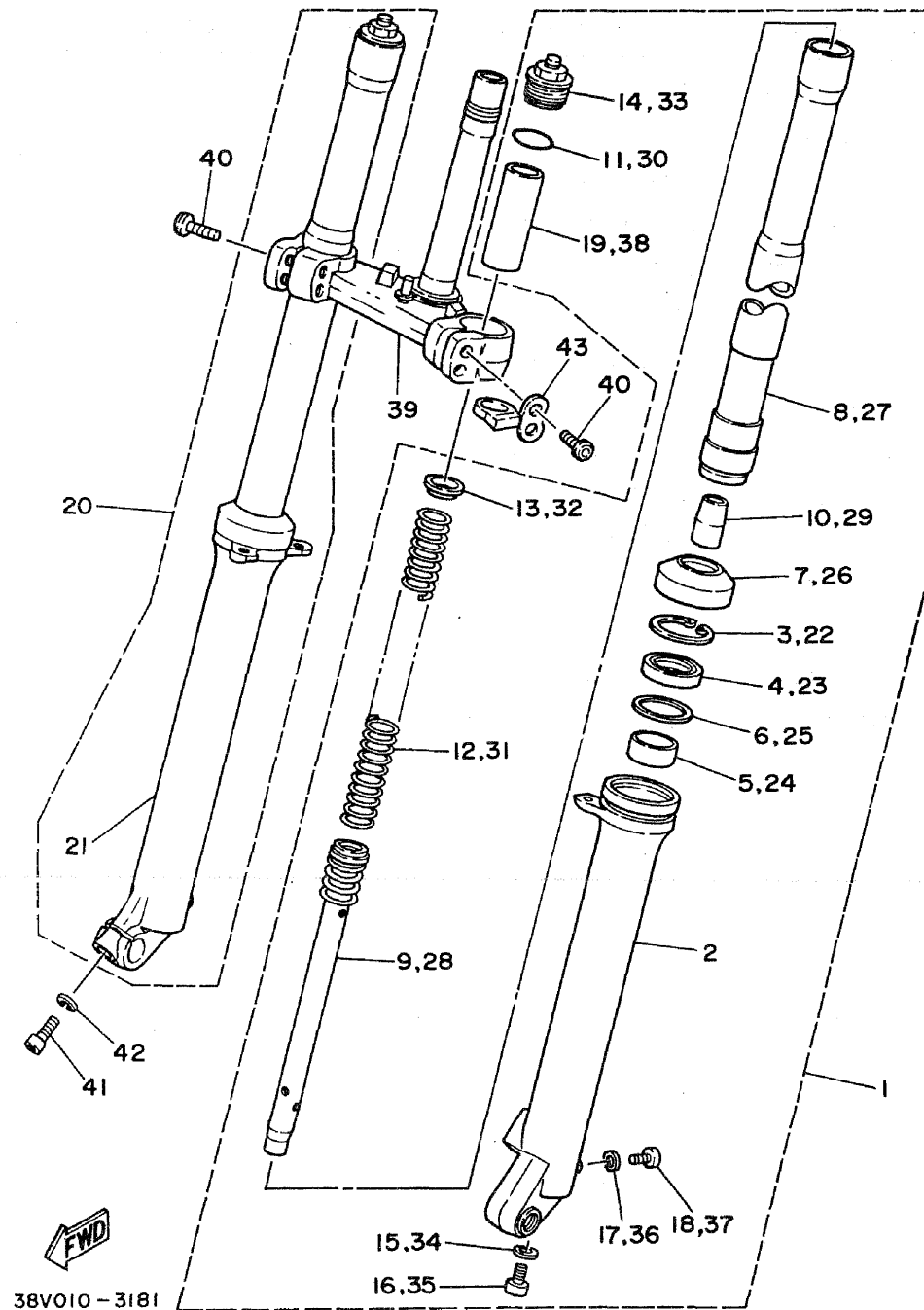


44H171-4170

C7



FIG. 18 FRONT FORK

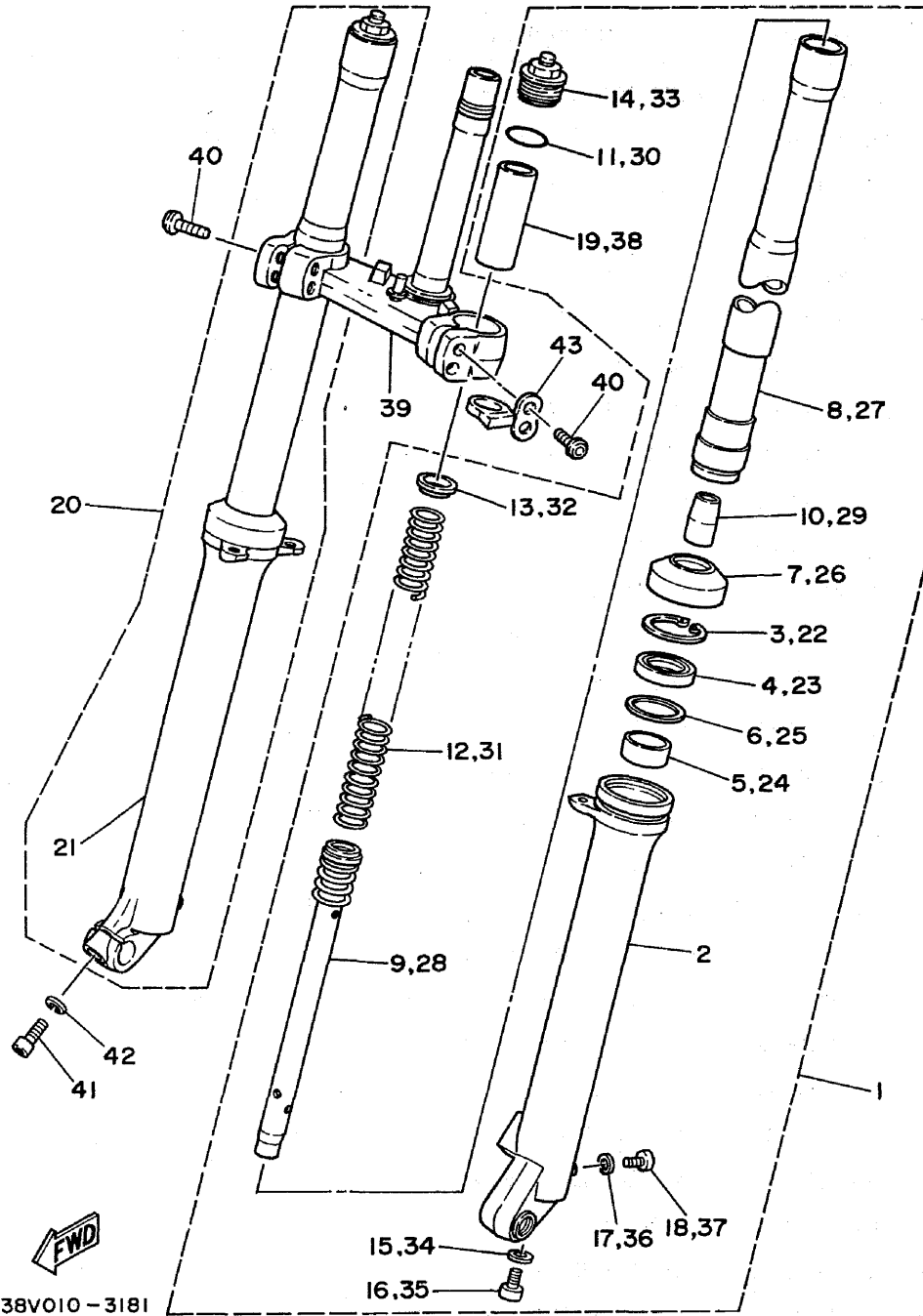


38V010 - 3181

REF. NO.	PART NO.	DESCRIPTION	Q'TY	REMARKS
1	38V-23102-00	FRONT FORK ASSY (L.H)	1	
2	38V-23126-00-FH	.TUBE, outer 1	1	fire red
3	4A1-23156-00	.CLIP, oil seal	1	
4	1W1-23145-L0	.OIL SEAL	1	
5	30X-23125-00	.METAL, slide 1	1	
6	5K5-23149-00	.WASHER, spring upper	1	
7	3J2-23144-00	.SEAL, dust	1	
8	38V-23110-00	.INNER TUBE COMP.1	1	
9	38V-23170-00	.CYLINDER COMP., front fork	1	
10	1W1-23173-L0	.SPINDLE, taper	1	
11	1W1-23114-L0	.GASKET	1	
12	38V-23141-00	.SPRING, front fork	1	
13	1W1-23142-L0	.SEAT, spring upper	1	
14	38V-23111-00	.BOLT, cap	1	
15	509-23158-L0	.GASKET	1	
16	278-23181-50	.BOLT, hexagon socket head	1	
17	122-23129-00	.GASKET, drain plug	1	
18	122-23119-01	.PLUG, drain	1	
19	4V5-23118-10	.SPACER	1	
20	38V-23103-00	FRONT FORK ASSY (R.H)	1	
21	38V-23136-00-FH	.TUBE, outer 2	1	fire red
22	4A1-23156-00	.CLIP, oil seal	1	
23	1W1-23145-L0	.OIL SEAL	1	
24	30X-23125-00	.METAL, slide 1	1	
25	5K5-23149-00	.WASHER, spring upper	1	
26	3J2-23144-00	.SEAL, dust	1	
27	38V-23110-00	.INNER TUBE COMP.1	1	
28	38V-23170-00	.CYLINDER COMP., front fork	1	

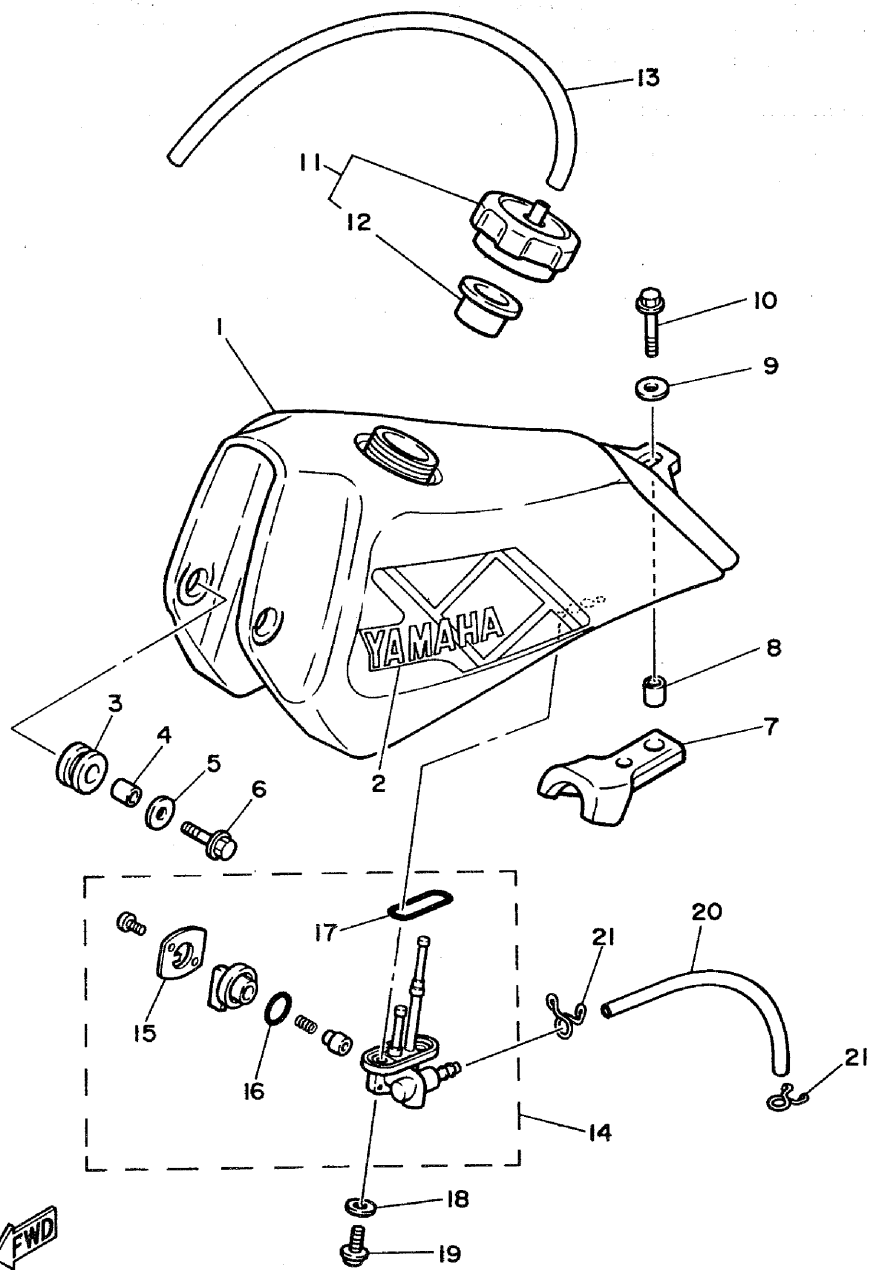
C8

FIG. 18 FRONT FORK



REF. NO.	PART NO.	DESCRIPTION	Q'TY	REMARKS
29	1W1-23173-L0	.SPINDLE, taper	1	
30	1W1-23114-L0	.GASKET	1	
31	38V-23141-00	.SPRING, front fork	1	
32	1W1-23142-L0	.SEAT, spring upper	1	
33	38V-23111-00	.BOLT, cap	1	
34	509-23158-L0	.GASKET	1	
35	278-23181-50	.BOLT, hexagon socket head	1	
36	122-23129-00	.GASKET, drain plug	1	
37	122-23119-01	.PLUG, drain	1	
38	4V5-23118-10	.SPACER	1	
39	44J-23340-00	UNDER BRACKET COMP.	1	
40	90110-08071	BOLT, hexagon socket head	4	
41	91311-08028	BOLT	1	
42	92901-08100	WASHER, spring	1	
43	3R4-23317-00	HOLDER, cable	1	

FIG. 19 FUEL TANK

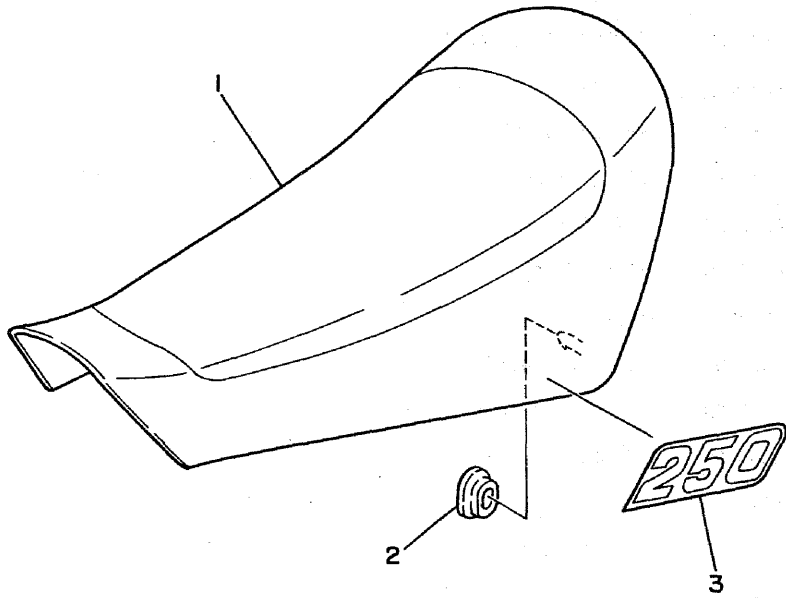


REF. NO.	PART NO.	DESCRIPTION	Q'TY	REMARKS
1	38V-24110-00	FUEL TANK COMP.	1	
2	38V-24250-00	GRAPHIC SET	1	
3	90480-18290	GROMMET	2	
4	90387-07598	COLLAR	2	
5	90201-06571	WASHER, plate	2	
6	95801-06025	BOLT, flange	2	
7	38V-24181-00	DAMPER, locating 1	1	
8	90387-06595	COLLAR	1	
9	90201-06750	WASHER, plate	1	
10	95801-06025	BOLT, flange	1	
11	38V-24610-00	CAP ASSY	1	
12	38V-24612-00	.GASKET, cap	1	
13	90445-09304	HOSE	1	
14	38V-24500-00	FUEL COCK ASSY 1	1	
15	4V5-24525-00	.PLATE, lever fitting	1	
16	4X8-24534-00	.SEAL, cock	1	
17	4X8-24512-00	.GASKET	1	
18	90202-06010	WASHER, plate	2	
19	90149-06011	SCREW	2	
20	90445-09078	HOSE	1	
21	90467-08003	CLIP	2	

38V010-3191

FIG. 20 SEAT

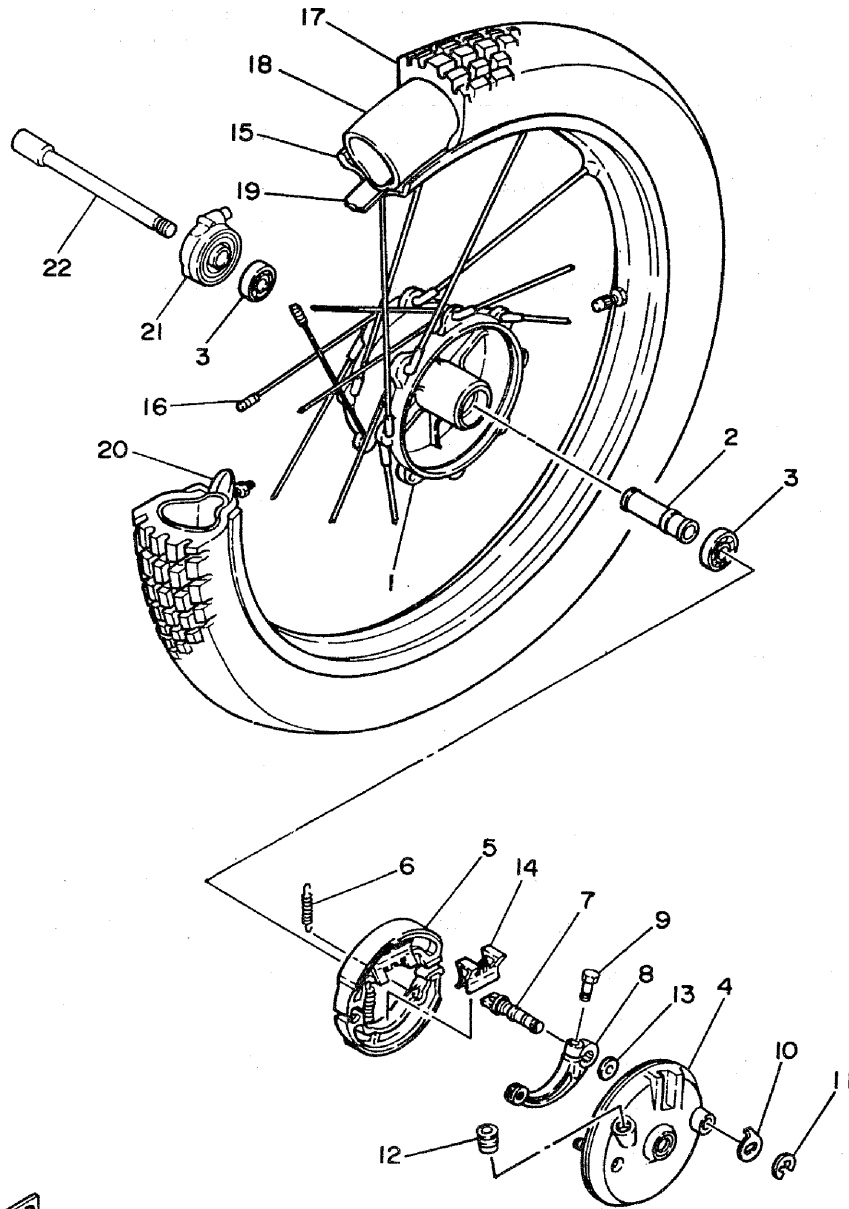
REF. NO.	PART NO.	DESCRIPTION	Q'TY	REMARKS
1	38V-24710-00	SINGLE SEAT ASSY	1	
2	90480-01141	GROMMET	2	
3	38V-21786-00	EMBLEM 6	2	



38V010-3200

C11

FIG. 21 FRONT WHEEL



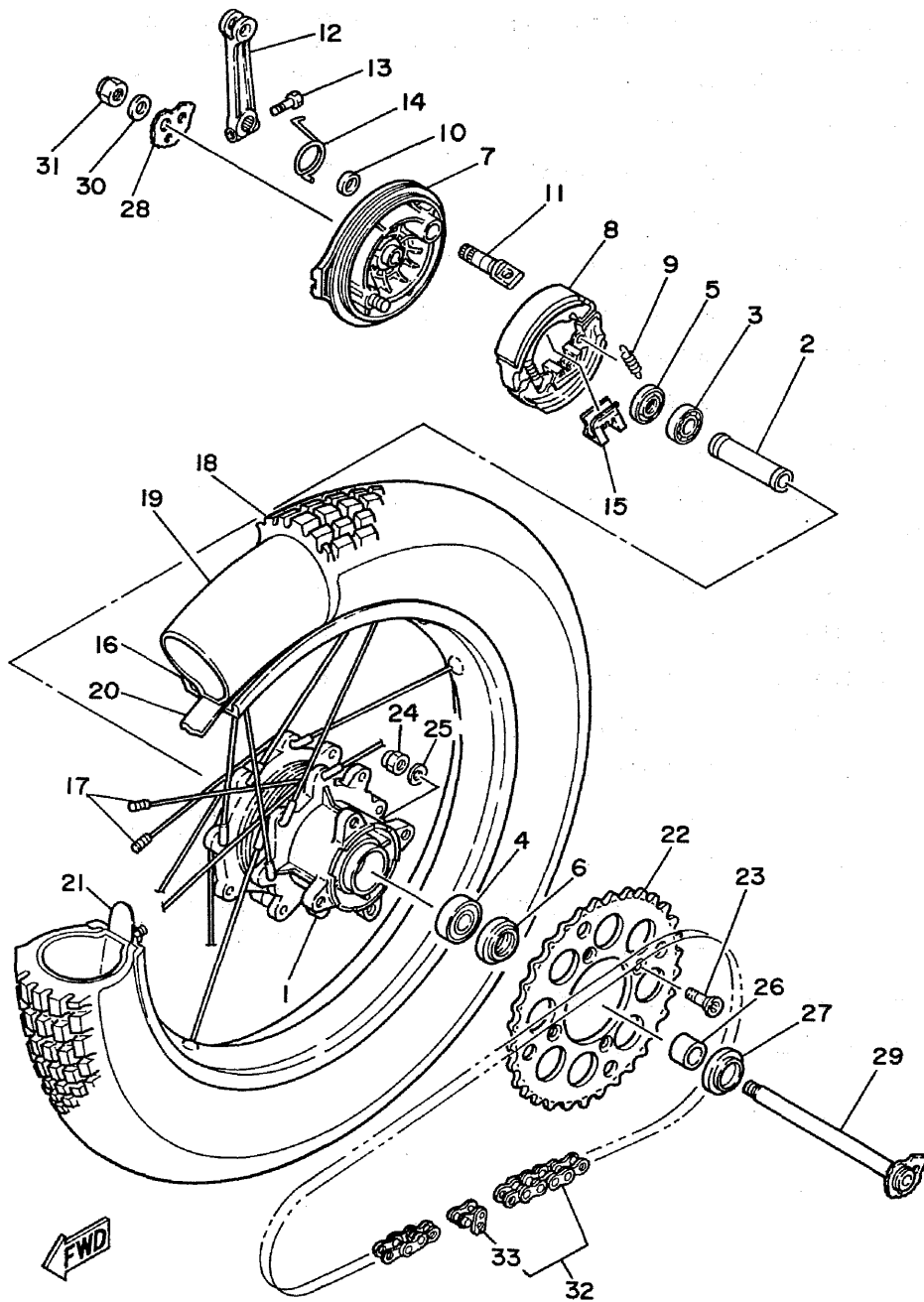
REF. NO.	PART NO.	DESCRIPTION	Q'TY	REMARKS
1	38V-25111-00-98	HUB, front	1	low gloss black
2	90560-15227	SPACER	1	
3	93306-20203	BEARING (B6202RS)	2	
4	38V-25121-00-98	PLATE, brake shoe	1	low gloss black
5	24X-25330-00	BRAKE SHOE COMP.	2	
6	90506-16036	SPRING, tension	2	
7	38V-25151-00	CAMSHAFT	1	
8	38V-25155-00	LEVER, camshaft 1	1	
9	90101-06291	BOLT	1	
10	38V-2513A-00	PLATE, indicator	1	
11	93430-10041	CIRCLIP	1	
12	38V-25184-00	BOSS	1	
13	90201-127E1	WASHER, plate	1	
14	38V-2514H-00	CLIP, shoe	2	
15	94416-21376	RIM (1.60-21)	1	
16	38V-25104-00	SPOKE SET, front	1	
17	*	TIRE (2.75-21)	1	LM michelin (trial competit.)
18	*	TUBE (2.75-21)	1	LM michelin (trial competit.)
19	*	BAND, rim (2.75-21)	1	LM michelin (trial competit.)
20	4V5-25194-00	SPACER, bead	1	
21	44J-25190-00	GEAR UNIT ASSY	1	
22	38V-25181-00	AXLE, wheel	1	



44H171-4210

**C12**

FIG. 22 REAR WHEEL



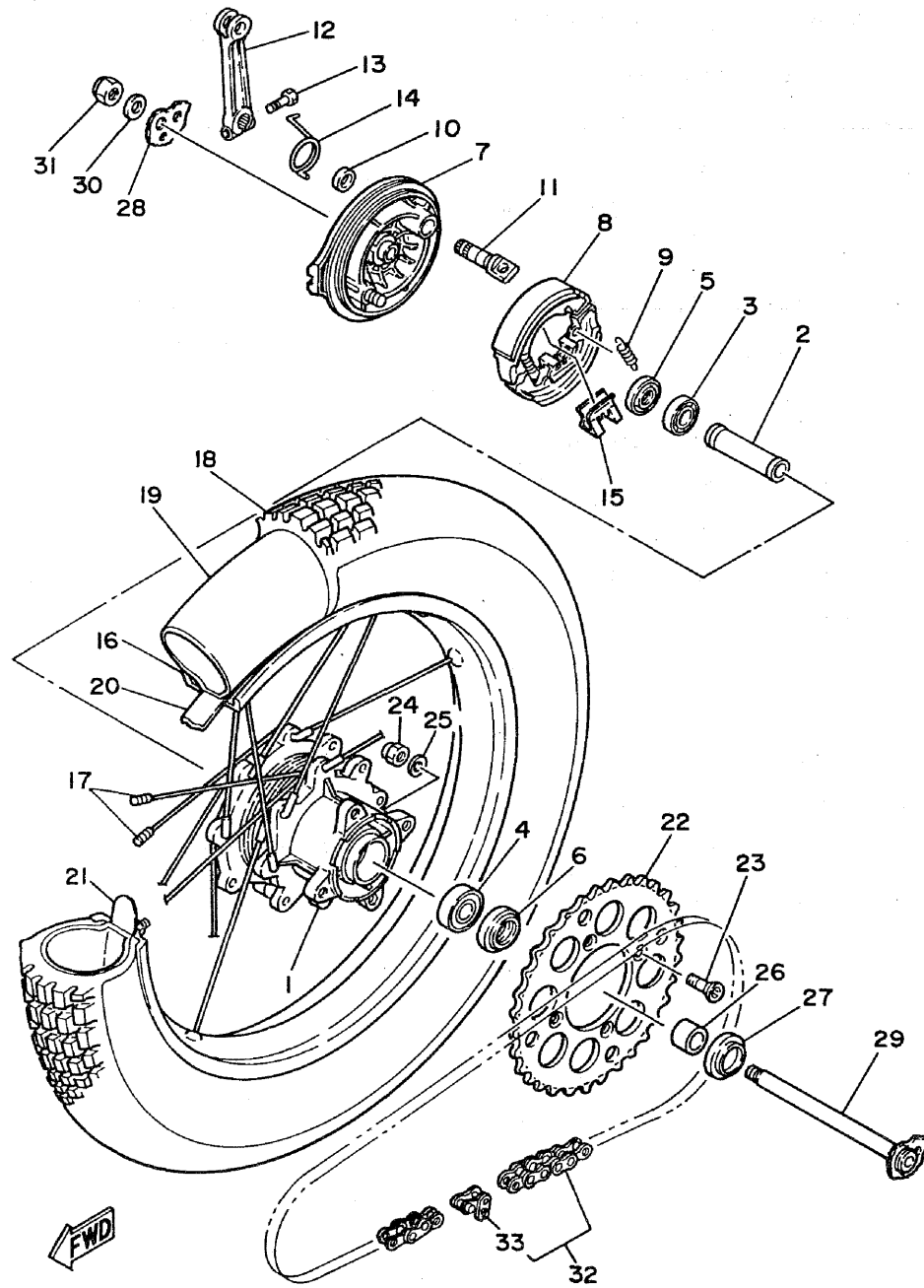
38V010-3220

REF. NO.	PART NO.	DESCRIPTION	Q'TY	REMARKS
1	38V-25311-00-98	HUB, rear	1	low gloss black
2	90560-15248	SPACER	1	
3	93306-20204	BEARING (B6202Z)	1	
4	93306-30203	BEARING (B6302Z)	1	
5	93104-22018	OIL SEAL	1	
6	93106-26005	OIL SEAL	1	
7	38V-25321-00-98	PLATE, brake shoe	1	low gloss black
8	437-25130-00	BRAKE SHOE COMP.	2	
9	90506-16150	SPRING, tension	2	
10	93109-14021	OIL SEAL	1	
11	38V-25351-00	CAMSHAFT	1	
12	4V5-25355-00	LEVER, camshaft	1	
13	90101-06291	BOLT	1	
14	90508-26637	SPRING, torsion	1	
15	38V-2514H-00	CLIP, shoe	2	
16	94421-18377	RIM (2.15-18)	1	
17	38V-25304-00	SPOKE SET, rear	1	
18	*	TIRE (4.00-18)	1	LM michelin (trial competit.)
19	*	TUBE (4.00-18)	1	LM michelin (trial competit.)
20	*	BAND, rim (4.00-18)	1	LM michelin (trial competit.)
21	1T1-25394-01	SPACER, bead	2	
22	38V-25442-00	SPROCKET, driven (42T)	1	
23	90109-08792	BOLT	4	
24	95611-08100	NUT, u	4	
25	90201-081A6	WASHER, plate	4	
26	90387-150K4	COLLAR	1	
27	401-25367-00	COVER, hub dust	1	
28	38V-25388-00	PULLER, chain 1	1	

C13

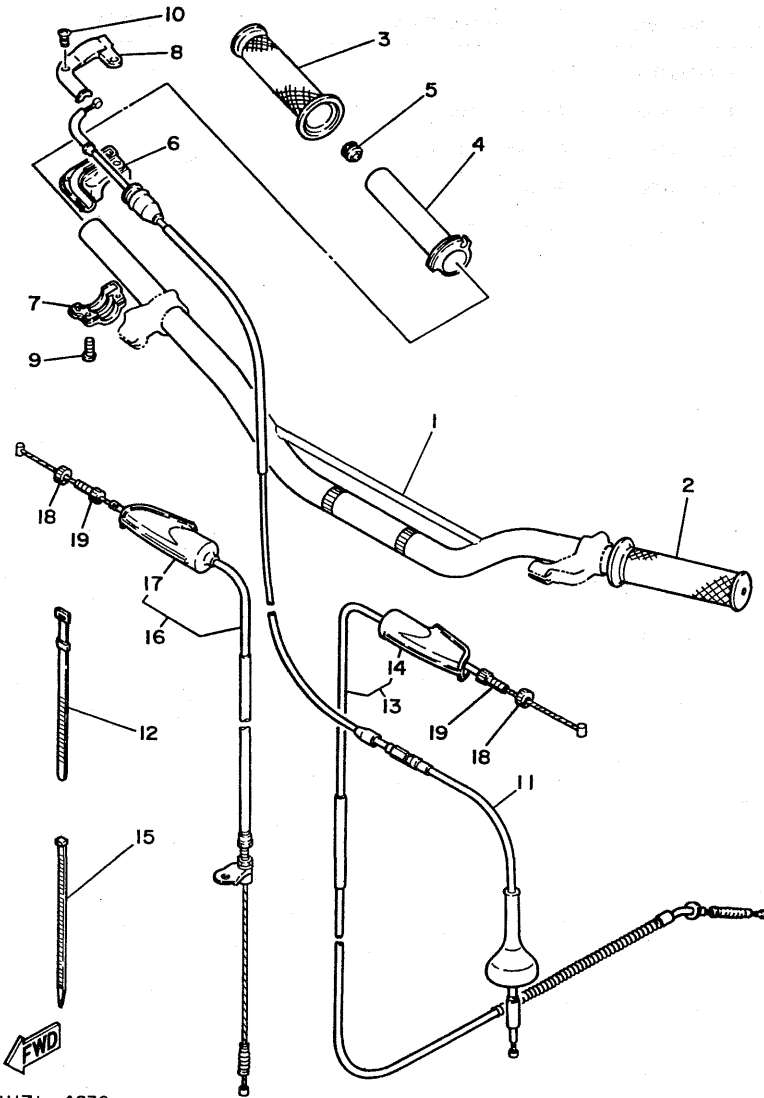
FIG. 22 REAR WHEEL

REF. NO.	PART NO.	DESCRIPTION	Q'TY	REMARKS
29	38V-25381-00	AXLE, wheel	1	
30	90201-14740	WASHER, plate	1	
31	90185-14112	NUT, self-locking	1	
32	94580-49096	CHAIN	1	
33	94680-49001	.JOINT, chain	1	



38V010-3220

FIG. 23 STEERING HANDLE. CABLE



44H171 - 4230

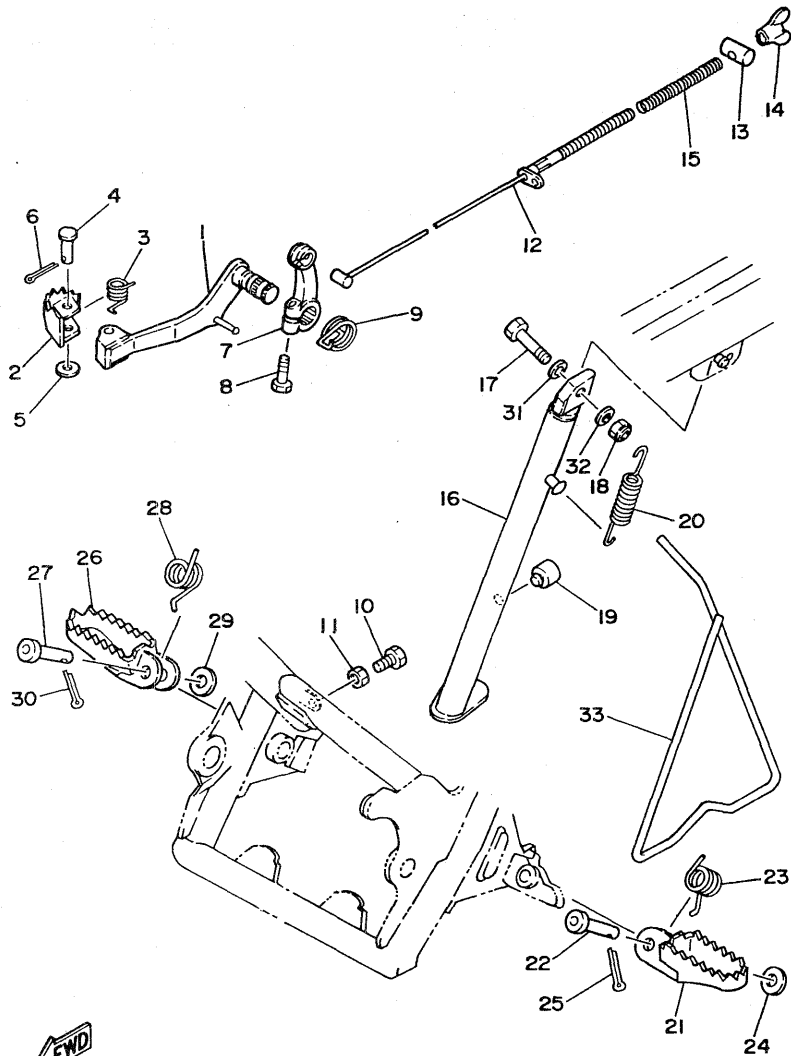
REF. NO.	PART NO.	DESCRIPTION	Q'TY	REMARKS
1	44J-26111-00	HANDLEBAR	1	
2	38V-26241-00	GRIP (L.H)	1	
3	38V-26242-00	GRIP (R.H)	1	
4	434-26243-11	TUBE, throttle guide	1	
5	688-82535-00	GROMMET	1	
6	38V-26281-00-98	CAP, grip upper	1	low gloss black
7	493-26282-00-98	CAP, grip lower	1	low gloss black
8	38V-2628H-00	CAP, wire	1	
9	98506-05016	SCREW, pan head	2	
10	98606-04012	SCREW, oval head	2	
11	38V-26311-00	CABLE, throttle 1	1	
12	437-83936-10	BAND, switch cord	1	
13	38V-26335-00	CABLE, clutch	1	
14	382-26372-01	.COVER, handle lever 1	1	
15	90465-13152	CLAMP	2	
16	44J-26341-00	CABLE, brake	1	
17	382-26372-01	.COVER, handle lever 1	1	
18	90179-08401	NUT	2	
19	90123-08090	BOLT	2	

**C15**



FIG. 24 STAND. FOOTREST

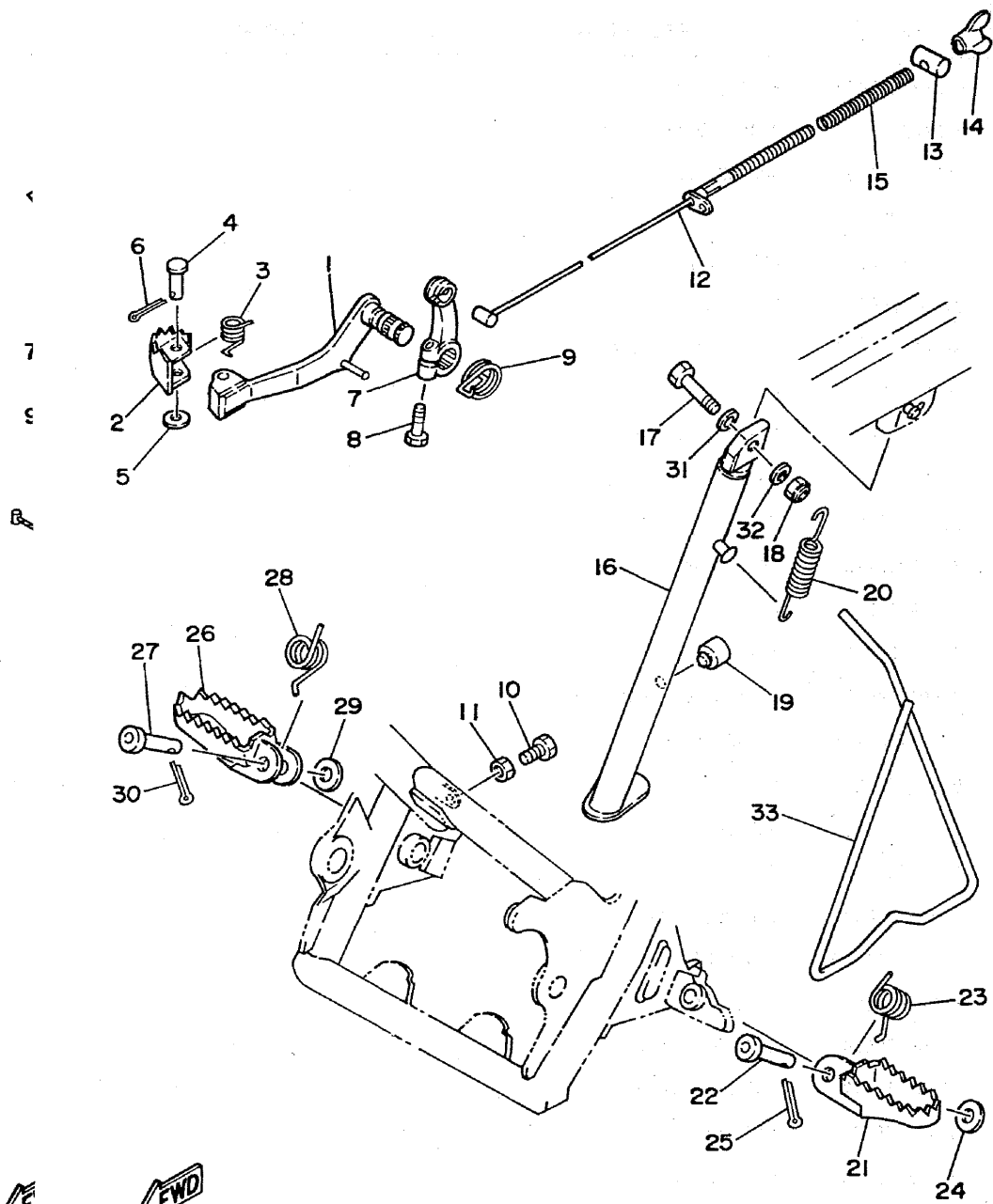
REF. NO.	PART NO.	DESCRIPTION	Q'TY	REMARKS
1	44J-27211-00	PEDAL, brake	1	
2	3R8-27242-00	PEDAL, brake	1	
3	90508-14429	SPRING, torsion	1	
4	91701-06028	PIN, clevis	1	
5	92901-06600	WASHER, plate	1	
6	91401-20015	PIN, cotter	1	
7	38V-27252-00	LEVER, brake pedal	1	
8	90101-06291	BOLT	1	
9	90508-23636	SPRING, torsion	1	
10	97301-06016	BOLT	1	
11	95301-06700	NUT	1	
12	38V-26351-00	CABLE, brake	1	
13	90249-12008	PIN	1	
14	90175-06016	NUT, wing	1	
15	90501-090A7	SPRING, compression	1	
16	38V-27311-01	STAND, side	1	
17	90109-06562	BOLT	1	
18	95601-06100	NUT, u	1	
19	38V-27314-00	STOPPER	1	
20	90506-25047	SPRING, tension	1	
21	38V-27411-00	FOOTREST 1	1	
22	90240-10101	PIN, clevis	1	
23	90508-20634	SPRING, torsion	1	
24	90201-10119	WASHER, plate	1	
25	91401-25020	PIN, cotter	1	
26	38V-27421-00	FOOTREST 2	1	
27	90240-10101	PIN, clevis	1	
28	90508-20635	SPRING, torsion	1	



44H171-4240

**D2**

FIG. 24 STAND. FOOTREST



REF. NO.	PART NO.	DESCRIPTION	Q'TY	REMARKS
29	90201-10119	WASHER, plate	1	
30	91401-25020	PIN, cotter	1	
31	90201-08085	WASHER, plate	1	
32	90201-065F3	WASHER, plate	1	
33	38V-27311-11	STAND, side	1	



44H17

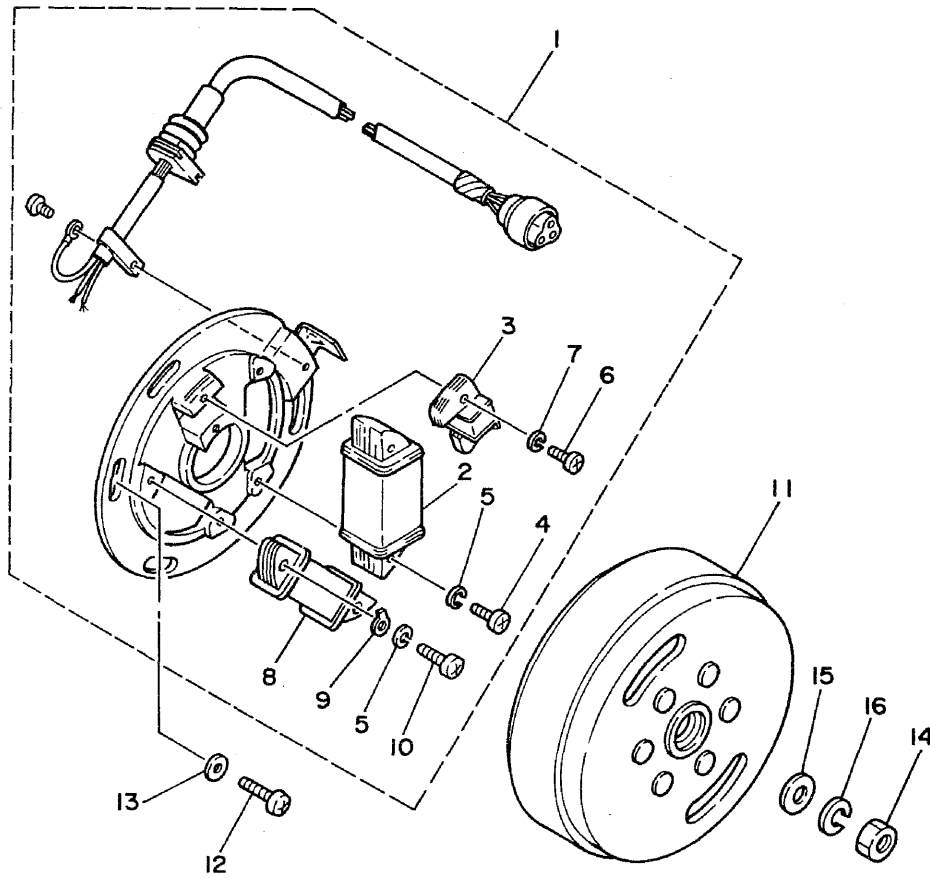


44H171-4240

**D3**

FIG. 25 GENERATOR

REF. NO.	PART NO.	DESCRIPTION	Q'TY	REMARKS
1	44H-85510-20	STATOR ASSY	1	
2	2X9-85512-20	.COIL, source	1	
3	2X9-85580-20	.COIL, pulser	1	
4	98502-05018	.SCREW, pan head	2	
5	92902-05100	.WASHER, spring	4	
6	98501-04014	.SCREW, pan head	2	
7	92902-04100	.WASHER, spring	2	
8	1W5-81313-20	.COIL, lighting 1	1	
9	2T4-85569-M1	.TERMINAL, earth 2	1	
10	98501-05025	.SCREW, pan head	2	
11	38V-85550-20	ROTOR ASSY	1	
12	92501-06014	SCREW, pan head	2	
13	92901-06600	WASHER, plate	2	
14	90170-12181	NUT	1	
15	90201-12593	WASHER, plate	1	
16	92901-12100	WASHER, spring	1	

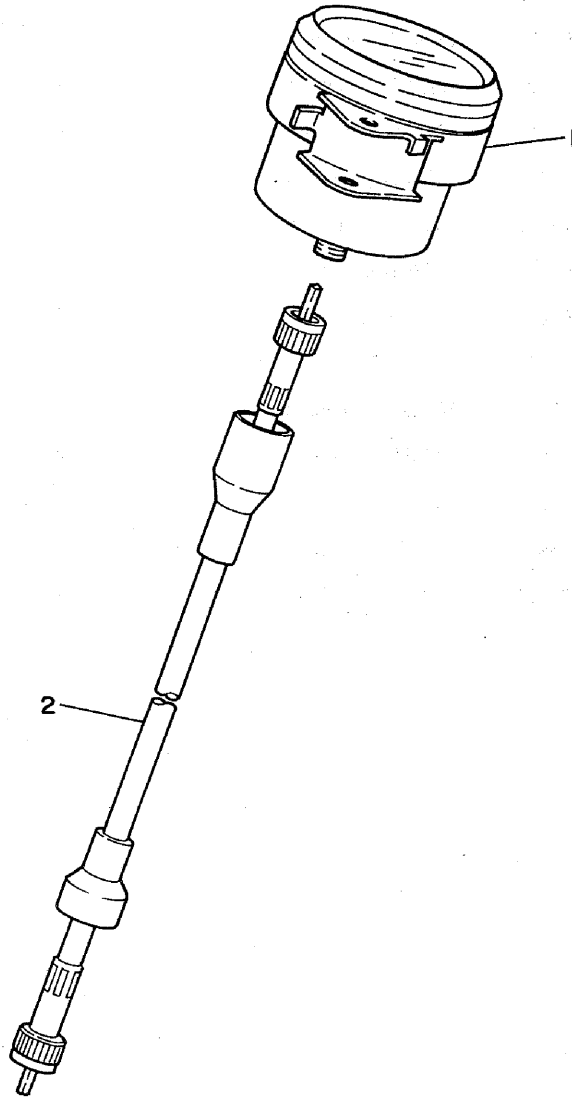


44H171-4250

**D4**

FIG. 26 METER

REF. NO.	PART NO.	DESCRIPTION	Q'TY	REMARKS
1	44H-83510-F0	SPEEDOMETER ASSY	1	UR km/h
	44H-83510-G0	SPEEDOMETER ASSY	1	UR mph
2	44H-83550-00	SPEEDOMETER CABLE ASSY	1	

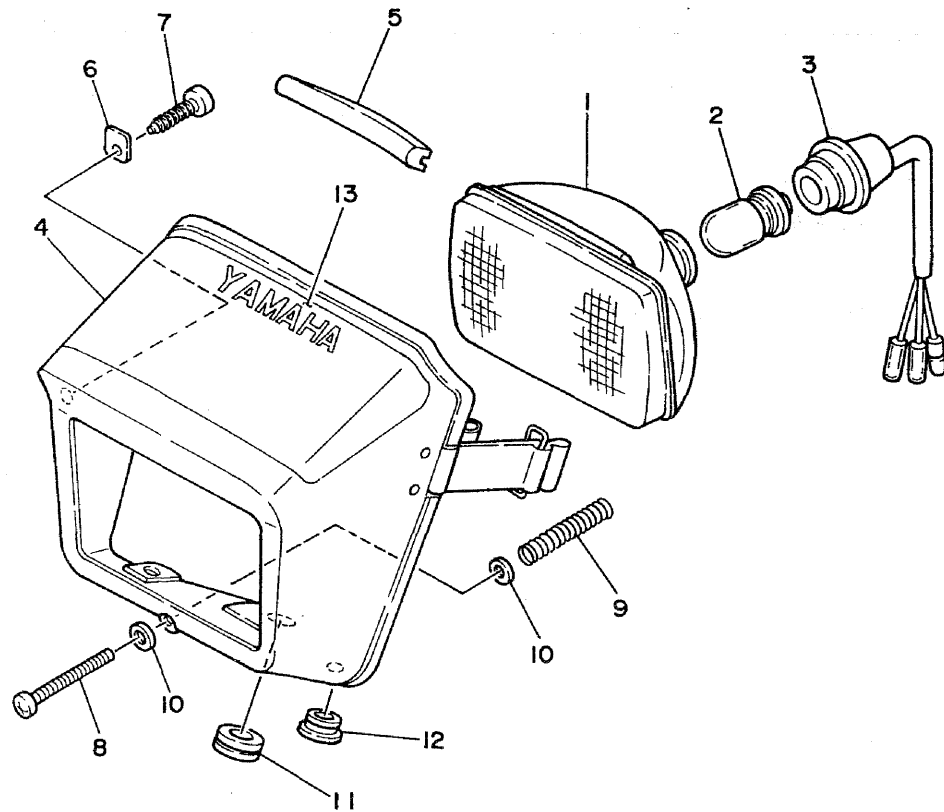


44H171-4260

D5

FIG. 27 HEADLIGHT

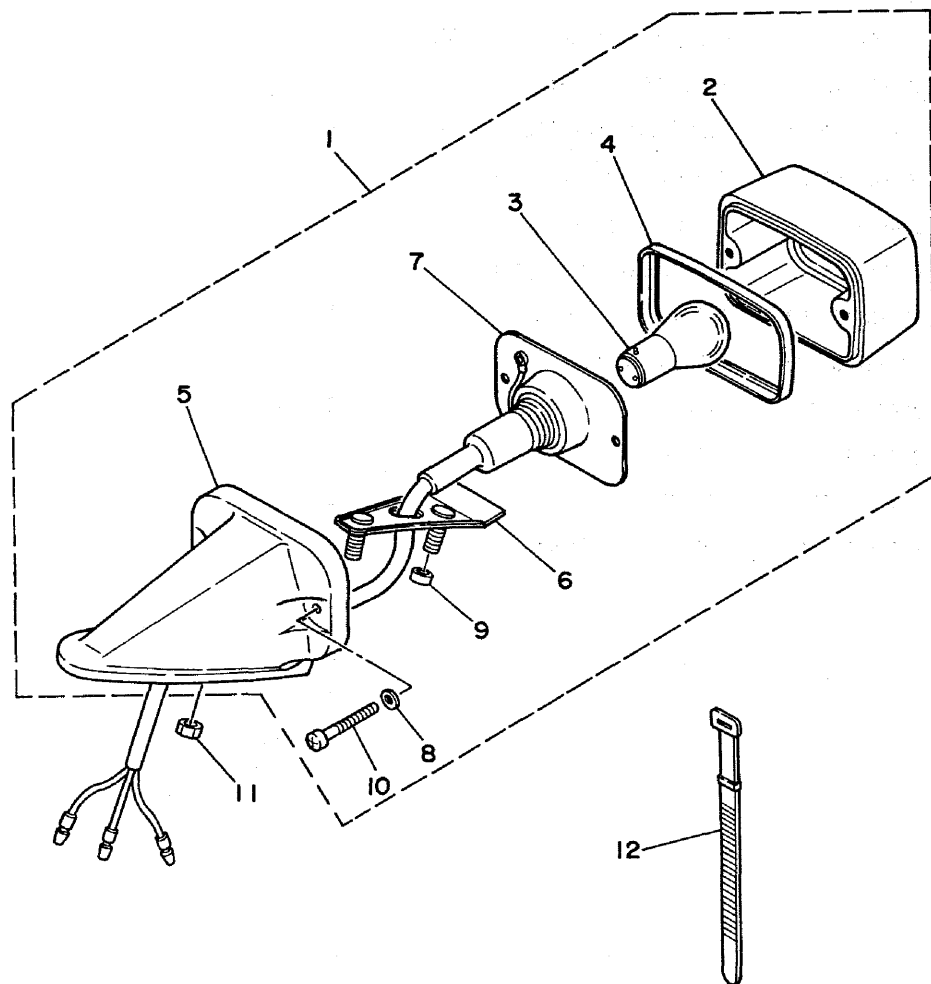
REF. NO.	PART NO.	DESCRIPTION	Q'TY	REMARKS
1	18A-84120-00	LENS ASSY	1	
2	4G2-84114-00	BULB, headlight (6V-25/25N)	1	
3	26A-84140-00	SOCKET CORD ASSY	1	
4	44H-84130-00	BODY ASSY, headlight	1	
5	26A-84143-00	DAMPER, headlight stay	1	
6	26A-8411H-00	PLATE, stopper	2	
7	97701-40510	SCREW, panhead tapping	2	
8	18A-84131-00	SCREW, rim adjuster	1	
9	18A-84132-00	SPRING, screw	1	
10	92901-04600	WASHER, plate	2	
11	90480-12053	GROMMET	1	
12	90480-10070	GROMMET	2	
13	44H-84141-00	EMBLEM, headlight	1	



44H171-4270

D6

FIG. 28 TAILLIGHT



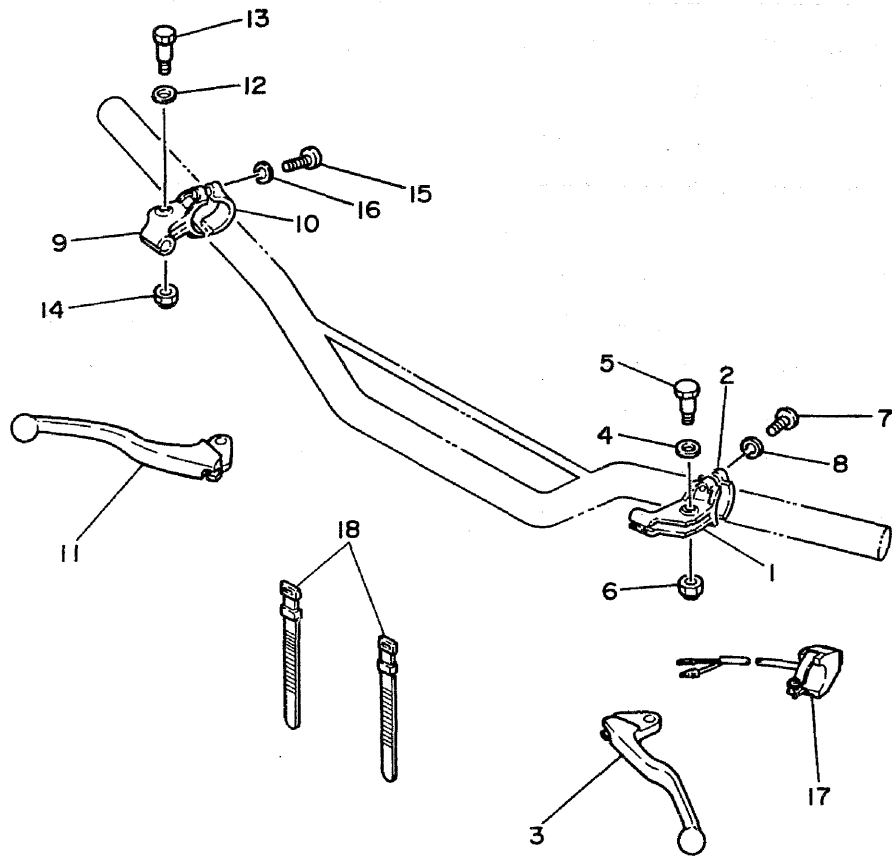
REF. NO.	PART NO.	DESCRIPTION	Q'TY	REMARKS
1	44H-84500-00	TAILLIGHT ASSY	1	
2	434-84521-69	.LENS, taillight	1	
3	122-84514-00	.BULB (6V-10/3W)	1	
4	434-84515-61	.RIM, taillight	1	
5	434-84519-64	.BRACKET, taillight	1	
6	434-84511-63	.BASE, taillight	1	
7	44H-84517-00	.CORD, taillight	1	
8	434-84522-62	.WASHER	2	
9	434-84557-60	.COLLAR	2	
10	434-84524-62	.SCREW, lens fitting	2	
11	95302-05600	NUT	2	
12	437-83936-00	BAND, switch cord	2	



44H171-4280

**D7**

FIG. 29 HANDLE SWITCH. LEVER



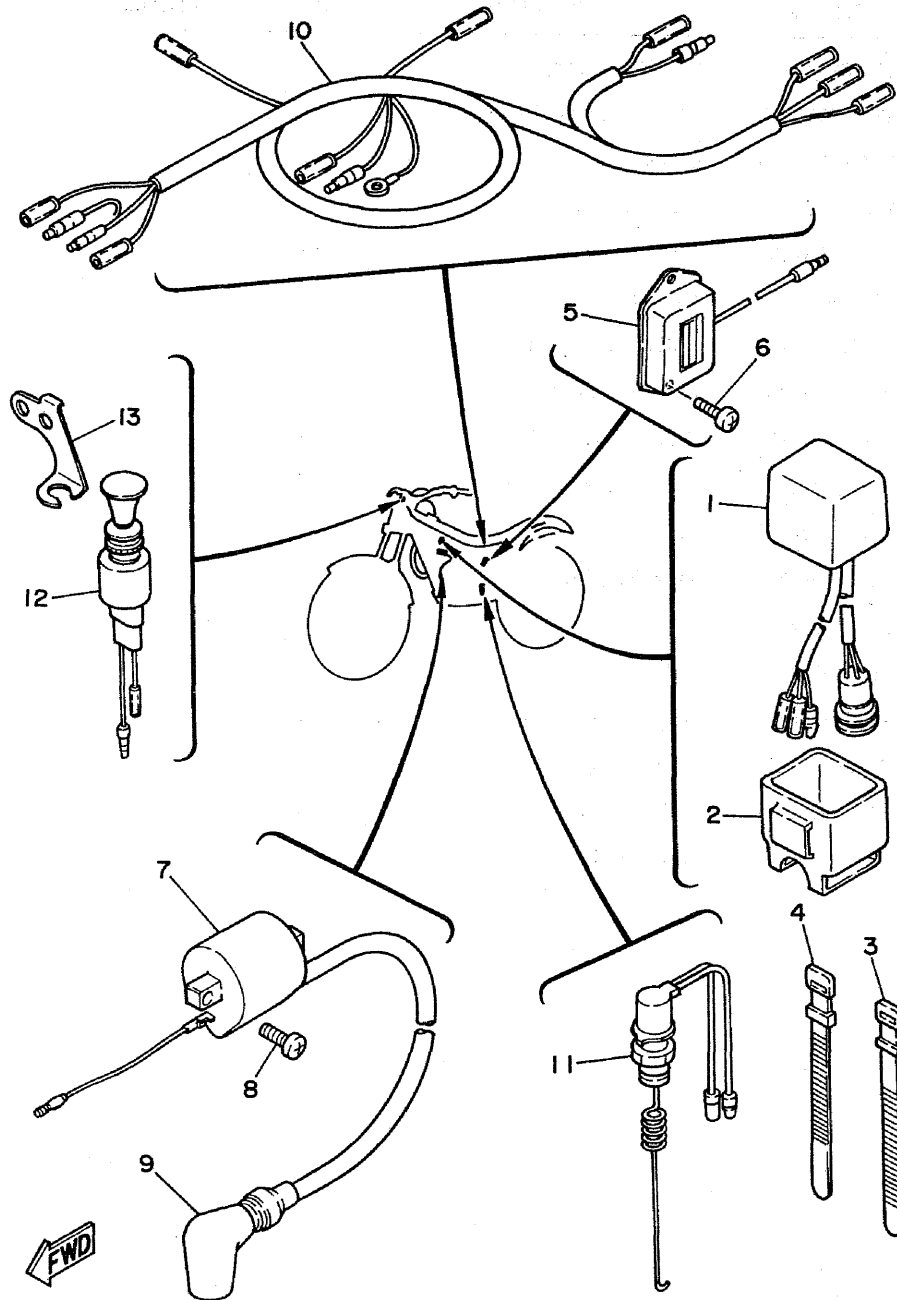
REF. NO.	PART NO.	DESCRIPTION	Q'TY	REMARKS
1	38V-82911-00	HOLDER, lever 1	1	
2	38V-82913-00	HOLDER, lever lower 1	1	
3	23X-83912-00	LEVER 1	1	
4	90201-08083	WASHER, plate	1	
5	90109-06410	BOLT	1	
6	95601-06100	NUT, u	1	
7	98506-05018	SCREW, pan head	2	
8	92906-05100	WASHER, spring	2	
9	38V-82921-00	HOLDER, lever 2	1	
10	38V-82913-00	HOLDER, lever lower 1	1	
11	23X-83922-00	LEVER 2	1	
12	90201-08083	WASHER, plate	1	
13	90109-06410	BOLT	1	
14	95601-06100	NUT, u	1	
15	98506-05018	SCREW, pan head	2	
16	92906-05100	WASHER, spring	2	
17	23X-83976-00	SWITCH, handle 1	1	
18	437-83936-00	BAND, switch cord	2	



38V010-3260

**D8**

FIG. 30 ELECTRICAL 1



REF. NO.	PART NO.	DESCRIPTION	Q'TY	REMARKS
1	38V-85540-20	C.D.I. UNIT ASSY	1	
2	2A7-85546-00	BAND	1	
3	437-83936-10	BAND, switch cord	2	
4	256-83936-00	BAND, switch cord	1	
5	498-81910-23	VOLTAGE REGULATOR ASSY	1	
6	92501-06012	SCREW, pan head	2	
7	23X-82310-40	IGNITION COIL ASSY	1	
8	92502-06016	SCREW, pan head	2	
9	1M1-82370-21	PLUG CAP ASSY	1	with noise suppressor
10	44H-82590-00	WIRE HARNESS ASSY	1	
11	1T2-82530-00	STOP SWITCH ASSY	1	
12	4V5-82520-00	LIGHT SWITCH ASSY	1	
13	44H-82527-00	STAY, light switch	1	

44H171-4300

D9



# INDEX

NUMERICAL INDEX

PART NO.	GRID NO.	PART NO.	GRID NO.	PART NO.	GRID NO.	PART NO.	GRID NO.	PART NO.	GRID NO.	PART NO.	GRID NO.
38V-11111-00	B- 2	38V-14349-00	B- 5	23X-16356-00	B-11	22W-22178-01	C- 4	44J-23340-00	C- 9	38V-26335-00	C-15
3R6-11162-00	B- 2	38V-14371-00	B- 5	2K7-16357-01	B-11	38V-22179-01	C- 4	1W1-23416-00	C- 7	44J-26341-00	C-15
25Y-11181-00	B- 2	434-14384-00	B- 5	38V-16371-00	B-11	38V-2218A-00	C- 4	38V-23435-00-38	C- 7	38V-26351-00	D- 2
38V-1131E-00	B- 2	38V-14385-00	B- 5	38V-16380-00	B-11	4V4-22184-00	C- 2	4H7-23441-00-38	C- 7	382-26372-01	C-15
38V-11311-00	B- 2	647-14386-00	B- 5	38V-17121-00	B-12			5K5-23469-00	C- 7		C-15
38V-11351-00	B- 2	38V-14396-00	B- 5	38V-17131-00	B-12	38V-22210-00-6W	C- 6	38V-24110-00	C-10	44J-27211-00	D- 2
38V-11400-00	B- 3	23V-14397-00	B- 5	38V-17151-00	B-12	5X6-22226-00	C- 5	38V-24181-00	C-10	3R8-27242-00	D- 2
38V-11412-00	B- 3	38V-14411-00	B- 4	38V-17161-00	B-12	38V-22311-00	C- 4	38V-24250-00	C-10	38V-27252-00	D- 2
38V-11422-00	B- 3	38V-14412-00	B- 4	38V-17211-00	B-12	38V-23102-00	C- 8	38V-24500-00	C-10	38V-27311-01	D- 2
25Y-11601-00	B- 3	26A-14436-00	B- 4	38V-17221-00	B-12	38V-23103-00	C- 8	360-24512-00	B- 5	38V-27311-11	D- 3
25Y-11601-10	B- 3	38V-14451-00	B- 4	38V-17231-00	B-12	38V-23110-00	C- 8	4X8-24512-00	C-10	38V-27314-00	D- 2
25Y-11601-20	B- 3	38V-14453-00	B- 4	38V-17241-00	B-12			4V5-24525-00	C-10	38V-27411-00	D- 2
25Y-11601-30	B- 3	38V-14493-00	B- 4	38V-17251-00	B-12	38V-23111-00	C- 8	4X8-24534-00	C-10	38V-27421-00	D- 2
25Y-11601-40	B- 3	38V-14610-00	B- 7	38V-17261-00	B-12			38V-24610-00	C-10	38V-28100-00	C- 2
38V-11631-00-96	B- 3	38V-14613-00	B- 7	38V-17411-00	B-12	1W1-23114-L0	C- 8	38V-24612-00	C-10	1W5-81313-20	D- 4
214-11633-00	B- 3	38V-14681-00	B- 7	38V-17421-00	B-12			38V-24710-00	C-11	498-81910-23	D- 9
38V-11635-00	B- 3	5X8-14714-00	B- 7	38V-17461-20	B-12	4V5-23118-10	C- 8	38V-25104-00	C-12	133-82131-00	B- 4
38V-11636-00	B- 3	565-14747-00	B- 7	38V-18101-00	B-15			38V-25111-00-98	C-12	23X-82310-40	D- 9
38V-11637-00	B- 3			44J-18110-00	B-15	122-23119-01	C- 8	38V-25121-00-98	C-12	1M1-82370-21	D- 9
38V-11638-00	B- 3	38V-14750-00	B- 7	3R4-18140-00	B-14			38V-2513A-00	C-12	4V5-82520-00	D- 9
24Y-11651-00	B- 3	38V-1490J-00	B- 5	1W1-18177-00	B-14	30X-23125-00	C- 8	437-25130-00	C-13	44H-82527-00	D- 9
3R5-11681-00	B- 3	38V-15111-00	B- 8	38V-18511-00	B-14			38V-2514H-00	C-12	1T2-82530-00	D- 9
5Y9-12491-00	B- 6	5X5-15113-00	B- 8	38V-18512-00	B-14	38V-23126-00-FH	C- 8		C-13	688-82535-00	C-15
	C- 3	3R4-15118-00	B- 8	38V-18513-00	B-14	122-23129-00	C- 8	38V-25151-00	C-12	44H-82590-00	D- 9
137-13115-00	B- 8	38V-15121-00	B- 8	5X5-18531-01	B-14			38V-25155-00	C-12	38V-82911-00	D- 8
431-13556-01	B- 4	1G8-15362-00	B- 9	5X5-18535-01	B-14	38V-23136-00-FH	C- 8	38V-25181-00	C-12	38V-82913-00	D- 8
38V-13565-00	B- 4	23X-15381-00	B- 8	38V-18540-00	B-14	38V-23141-00	C- 8	38V-25184-00	C-12		D- 8
1M1-13610-10	B- 4	3R4-15383-01	B- 8	44J-21110-00-FH	C- 2			44J-25190-00	C-12	38V-82921-00	D- 8
1M1-13613-10	B- 4	38V-15411-00	B- 9	38V-21316-00-FH	C- 2	1W1-23142-L0	C- 8	4V5-25194-00	C-12	44H-83510-F0	D- 5
1M1-13616-00	B- 4	38V-15421-00	B- 9	38V-21471-00	C- 2			38V-25304-00	C-13	44H-83510-G0	D- 5
38V-14103-00	B- 5	38V-15431-00	B- 9	38V-21485-00	C- 2	3J2-23144-00	C- 8	38V-25311-00-98	C-13	44H-83550-00	D- 5
38V-14104-00	B- 5	38V-15451-00	B- 9	38V-21510-00	C- 3			38V-25321-00-98	C-13	23X-83912-00	D- 8
38V-14107-00	B- 5	38V-15462-00	B- 9	38V-21575-00	C- 3	1W1-23145-L0	C- 8	24X-25330-00	C-12	23X-83922-00	D- 8
15A-14118-00	B- 5	24Y-15618-00	B-10	44J-21610-00	C- 3			38V-25351-00	C-13	256-83936-00	D- 9
434-14126-00	B- 5	38V-15620-01	B-10	38V-21621-00	C- 3	5K5-23149-00	C- 8	4V5-25355-00	C-13	437-83936-00	D- 7
38V-14153-00	B- 5	38V-15621-00	B-10	38V-21784-00	C- 7			401-25367-00	C-13		D- 8
288-14161-00	B- 5	38V-15641-00	B-10	38V-21786-00	C-11	4A1-23156-00	C- 8	38V-25381-00	C-14	437-83936-10	C-15
38V-14191-00	B- 5	38V-15651-00	B-10	38V-22110-00-FH	C- 4			38V-25388-00	C-13		D- 9
44J-14301-00	B- 5	38V-15660-00	B-10	156-22127-00	C- 4	509-23158-L0	C- 8	1T1-25394-01	C-13	23X-83976-00	D- 8
38V-14312-25	B- 5	38V-15664-00	B-10	322-22128-01	C- 4			38V-25442-00	C-13	26A-8411H-00	D- 6
434-14331-00	B- 5	38V-16111-00	B-11	5X6-22129-00	C- 5	38V-23170-00	C- 8	44J-26111-00	C-15	4G2-84114-00	D- 6
38V-14341-00	B- 5	38V-16150-00	B-11	5X4-22141-01	C- 4			38V-26241-00	C-15	18A-84120-00	D- 6
38V-14342-23	B- 5	2K7-16154-00	B-11	38V-22147-00	C- 4	1W1-23173-L0	C- 8	38V-26242-00	C-15	44H-84130-00	D- 6
38V-14342-24	B- 5			38V-2217A-00	C- 5			434-26243-11	C-15	18A-84131-00	D- 6
38V-14342-25	B- 5	2K7-16181-00	B-11	38V-2217F-00	C- 5	278-23181-50	C- 8	38V-2628H-00	C-15	18A-84132-00	D- 6
288-14343-65	B- 5	5X5-16321-00	B-11	38V-2217M-00	C- 4			38V-26281-00-98	C-15	26A-84140-00	D- 6
288-14343-70	B- 5	168-16325-00	B-11	38V-2217Y-00	C- 4	3R4-23317-00	C- 9	493-26282-00-98	C-15	44H-84141-00	D- 6
288-14343-75	B- 5	38V-16351-00	B-11	22W-22178-01	C- 2	5X2-23317-00	C- 7	38V-26311-00	C-15	26A-84143-00	D- 6

NUMERICAL INDEX

PART NO.	GRID NO.	PART NO.	GRID NO.	PART NO.	GRID NO.	PART NO.	GRID NO.	PART NO.	GRID NO.	PART NO.	GRID NO.
44H-84500-00	D- 7	90157-06025	C- 3	90201-20358	B-10	90465-20035	B- 8	92506-06012	B- 9	93332-00023	C- 7
434-84511-63	D- 7	90159-06016	B-11	90201-222F4	C- 4	90467-08003	C-10	92506-06025	B- 9	93332-00059	C- 7
122-84514-00	D- 7	90159-06032	C- 4	90201-22555	B-12	90468-26048	B-10	92506-06035	B- 9	93410-17008	B-10
434-84515-61	D- 7	90170-12181	D- 4	90201-25287	B-12	90480-01141	C-11	92701-06012	B- 8	93410-17037	B-10
44H-84517-00	D- 7	90170-18089	B-11	90202-06010	B- 7	90480-09211	B- 4	92901-04200	B- 4	93410-20038	B-12
434-84519-64	D- 7	90170-20255	B-11		C-10	90480-10070	D- 6	92901-04600	D- 6	93410-22039	B-12
434-84521-69	D- 7	90175-06016	D- 2	90209-22082	B-12	90480-12053	D- 6	92901-06100	B- 4	93430-10041	C-12
434-84522-62	D- 7	90179-08401	C-15	90209-25085	B- 3	90480-18290	C-10		B-11	93440-25084	B-12
434-84524-62	D- 7	90179-10292	B- 2	90215-20212	B-11	90501-090A7	D- 2	92901-06600	D- 2	93450-19052	B- 3
434-84557-60	D- 7	90179-12244	B-10	90215-21239	B-12	90501-13720	B-10		D- 4	93501-04011	B-10
44H-85510-20	D- 4	90179-20255	B-13	90240-10101	D- 2	90501-230A5	B-11	92901-08100	B- 7	93515-32029	B-11
2X9-85512-20	D- 4	90179-25451	C- 7		D- 2	90506-16036	C-12		B- 7	93606-14154	B-14
38V-85540-20	D- 9	90185-08106	C- 2	90249-12008	D- 2	90506-16150	C-13		C- 9	93608-25150	B-15
2A7-85546-00	D- 9	90185-08113	C- 2	90267-32119	C- 3	90506-25047	D- 2	92901-12100	D- 4	93700-06004	C- 5
38V-85550-20	D- 4		C- 4	90267-40029	B- 4	90508-10514	B-15	92901-18100	B-11		C- 5
2T4-85569-M1	D- 4		C- 5	90280-05013	B- 3	90508-14429	D- 2	92902-04100	D- 4		C- 6
2X9-85580-20	D- 4		C- 6	90282-07019	B-11	90508-14664	B-11	92902-05100	D- 4	93700-06005	C- 5
90101-06291	C-12		C- 6	90338-07011	B- 8	90508-20634	D- 2	92906-05100	D- 8	94416-21376	C-12
	C-13	90185-10120	C- 5	90340-12095	B- 8	90508-20635	D- 2		D- 8	94421-18377	C-13
	D- 2		C- 5	90380-08136	C- 4	90508-23636	D- 2	93101-12004	B-15	94580-49096	C-14
90101-06529	B- 8	90185-12061	C- 5	90380-10137	C- 6	90508-26421	B-14	93102-17263	B-11	94680-49001	C-14
90101-08428	C- 4	90185-14112	C-14	90380-12094	C- 5	90508-26637	C-13	93102-20309	B-10	94701-00111	B- 2
90101-08599	C- 6	90185-16127	C- 4	90380-12135	C- 5	90508-29361	B-15	93102-32136	B-12	95301-06600	B-11
90101-10598	C- 5	90201-065F3	D- 3	90380-16134	C- 4	90508-30632	B-10	93103-30092	B- 3	95301-06700	D- 2
90101-12597	C- 5	90201-06571	C- 3	90380-22111	C- 4	90508-35633	C- 4	93103-40091	B- 3	95301-08600	B- 2
90105-08292	C- 5		C-10	90381-12051	C- 5	90560-12171	B-15	93104-22018	C-13		B- 7
90105-14137	C- 7	90201-06750	C-10	90381-16052	C- 4	90560-15227	C-12	93106-22019	C- 4	95302-05600	D- 7
90109-06410	D- 8	90201-08083	D- 8	90384-12097	C- 4	90560-15248	C-13	93106-26005	C-13	95601-06100	C- 3
	D- 8		D- 8	90384-18157	C- 5	91311-08028	C- 9	93109-14021	C-13		D- 2
90109-06562	D- 2	90201-08085	D- 3	90387-06595	C-10	91316-06020	B- 4	93109-16035	C- 5		D- 8
90109-08705	C- 2	90201-08092	C- 4	90387-07598	C-10	91316-06040	B- 8	93109-17048	C- 5		D- 8
90109-08792	C-13	90201-081A6	C-13	90387-081K6	B- 7	91316-06045	B- 8	93210-14104	B- 9	95601-08100	B- 7
90109-08793	C- 6	90201-08113	B- 7	90387-08258	B- 7	91316-06055	B- 8	93210-19501	B-10	95611-08100	C-13
90109-10702	C- 5	90201-08649	B- 2	90387-150K4	C-13	91316-06070	B- 8	93300-20501	B-12	95801-06025	C-10
90110-08071	B- 7	90201-08795	B- 7	90387-160H4	B- 8	91316-08030	C- 7		B-12		C-10
	B- 7	90201-10119	D- 2		B- 8	91401-20015	D- 2	93306-20203	C-12	95802-08016	C- 4
	C- 7		D- 3	90387-250K3	B-12	91401-25020	D- 2	93306-20204	C-13	95811-08016	C- 2
	C- 9	90201-10430	C- 5	90430-06017	B- 8		D- 3	93306-20619	B- 3	95811-08065	C- 2
90116-08042	B- 7		C- 5	90430-12038	B- 8	91701-06028	D- 2		B- 3	97301-06016	D- 2
90116-08394	B- 2	90201-12593	D- 4	90445-081A0	B- 8	91810-05016	B- 8	93306-30203	C-13	97321-06020	B-15
90116-10313	B- 2	90201-127E1	C-12	90445-09078	C-10	91830-24016	B- 2	93310-418E9	B- 3	97601-01441	B- 5
90116-10314	B- 2	90201-13202	C- 2	90445-09304	C-10	92501-06012	B- 4	93310-42541	B- 3	97602-03108	B- 4
90123-08090	C-15	90201-14740	C-14	90460-01186	B- 4		B- 8	93311-41734	B-12	97701-40510	D- 6
90149-06011	C-10	90201-160F6	C- 4	90460-39202	B- 7		B- 8	93311-62035	B-12	98501-04014	D- 4
90149-06123	B-11	90201-17255	B-12	90460-43053	B- 4		D- 9	93315-21721	B-11	98501-05025	D- 4
90149-06167	C- 3	90201-17327	B-11	90460-49160	B- 4	92501-06014	D- 4	93315-31732	C- 5	98502-05018	D- 4
90152-06010	B-10	90201-17545	B-10	90465-08261	C- 3	92501-08010	B- 8	93317-21647	C- 5	98506-05016	C-15
90157-06025	C- 3	90201-20278	B-12	90465-13152	C-15	92502-06016	D- 9	93317-32231	C- 4	98506-05018	D- 8

NUMERICAL INDEX

PART NO.	GRID NO.	PART NO.	GRID NO.	PART NO.	GRID NO.	PART NO.	GRID NO.	PART NO.	GRID NO.
98506-05018	D- 8								
98606-04012	C-15								
98906-06008	B- 7								
*	C-12								
*	C-12								
*	C-12								
*	C-13								
*	C-13								
*	C-13								

PARTS NAME INDEX

DESCRIPTION	GRID NO.	DESCRIPTION	GRID NO.	DESCRIPTION	GRID NO.
ABSORBER 2 .....	B- 2	BOLT, cap .....	C- 8	CHAIN .....	C-14
AIR SCREW SET .....	B- 5	*	C- 9	CIRCLIP .....	B- 3
ARM 1 .....	C- 4	BOLT, flange .....	C- 2	*	B-10
ARM, relay .....	C- 5	*	C- 4	*	B-12
ARM, tensioner .....	C- 4	*	C-10	*	C-12
AXLE, drive .....	B-12	BOLT, hexagon socket head .....	B- 7	CLAMP .....	B- 8
AXLE, main .....	B-12	*	C- 7	*	C- 3
AXLE, wheel .....	C-12	*	C- 8	*	C-15
*	C-14	*	C- 9	CLAMP 1 .....	B- 6
BALL .....	B-10	BOLT, stopper .....	B-14	*	C- 3
*	B-11	BOLT, stud .....	B- 2	CLAMP, hose .....	B- 4
BAND .....	D- 9	*	B- 7	*	B- 7
BAND, battery .....	B- 4	BOLT, washer based .....	C- 5	CLIP, shoe .....	C-12
BAND, rim (2.75-21) .....	C-12	*	C- 7	*	C-13
BAND, rim (4.00-18) .....	C-13	BOSS .....	C-12	CLIP .....	B-10
BAND, switch cord .....	C-15	BOSS, clutch .....	B-11	*	C-10
*	D- 7	BOSS, kick crank .....	B-10	CLIP, oil seal .....	C- 8
*	D- 8	BRACKET, relay .....	C- 4	COIL, lighting 1 .....	D- 4
*	D- 9	BRACKET, taillight .....	D- 7	COIL, pulser .....	D- 4
BAR, shift fork guide 1 .....	B-14	BRAKE SHOE COMP. ....	C-12	COIL, source .....	D- 4
BAR, shift fork guide 2 .....	B-14	*	C-13	COLLAR .....	B- 7
BASE, taillight .....	D- 7	BULB (6V-10/3W) .....	D- 7	*	B- 8
BEARING .....	B-12	BULB, headlight (6V-25/25N).....	D- 6	*	B-12
*	C- 7	BUSH .....	C- 2	*	C-10
BEARING (B6202RS) .....	C-12	*	C- 4	*	C-13
BEARING (B6202Z) .....	C-13	BUSH, bimetal formed .....	C- 4	*	D- 7
BEARING (B6206) .....	B- 3	*	C- 5	CONNECTOR, suction pipe .....	B- 8
BEARING (B6302Z) .....	C-13	BUSH, shock absorber lower .....	C- 5	CORD, taillight .....	D- 7
BEARING, cylindrical .....	B- 3	BUSH, solid .....	C- 4	COVER, ball race 2 .....	C- 7
*	B-11	*	C- 5	COVER, crankcase 1 .....	B- 9
*	B-12	*	C- 6	COVER, crankcase 2 .....	B- 9
*	C- 4	C.D.I. UNIT ASSY .....	D- 9	COVER, crankcase 3 .....	B- 9
*	C- 5	CABLE, brake .....	C-15	COVER, handle lever 1 .....	C-15
BODY ASSY, headlight .....	D- 6	*	D- 2	COVER, hub dust .....	C-13
BOLT .....	B- 4	CABLE, clutch .....	C-15	COVER, kick lever .....	B-10
*	B- 8	CABLE, throttle 1 .....	C-15	COVER, thrust 1 .....	C- 4
*	B-15	CAMSHAFT .....	C-12	COVER, thrust 2 .....	C- 5
*	C- 2	*	C-13	CRANK 1 .....	B- 3
*	C- 4	CAP .....	B- 5	CRANK 2 .....	B- 3
*	C- 5	CAP ASSY .....	C-10	CRANKCASE 1 .....	B- 8
*	C- 6	CAP, bolt .....	C- 7	CRANKCASE 2 .....	B- 8
*	C- 7	CAP, cleaner case 1 .....	B- 4	CRANKSHAFT ASSY .....	B- 3
*	C- 9	CAP, grip lower .....	C-15	CROWN, handle .....	C- 7
*	C-12	CAP, grip upper .....	C-15	CYLINDER 1 .....	B- 2
*	C-13	CAP, wire .....	C-15	CYLINDER COMP., front fork .....	C- 8
*	C-15	CARBURETOR ASSY 1 .....	B- 5	DAMPER, headlight stay .....	D- 6
*	D- 2	CASE, air cleaner 1 .....	B- 4	DAMPER, locating 1 .....	C-10
*	D- 8	CASE, chain .....	C- 4	DAMPER, muffler .....	B- 7

## PARTS NAME INDEX

DESCRIPTION	GRID NO.	DESCRIPTION	GRID NO.	DESCRIPTION	GRID NO.
DAMPER, rubber 1 .....	C- 2	GEAR, kick idle (23T) .....	B-10	LIGHT SWITCH ASSY .....	D- 9
ELEMENT, air cleaner .....	B- 4	GEAR, primary drive .....	B-11	METAL, slide 1 .....	C- 8
EMBLEM 4 .....	C- 7	GRAPHIC SET .....	C-10	NEEDLE SET .....	B- 5
EMBLEM 6 .....	C-11	GRIP (L.H.) .....	C-15	NEEDLE VALVE SET .....	B- 5
EMBLEM, headlight .....	D- 6	GRIP (R.H.) .....	C-15	NIPPLE, grease .....	C- 5
EMBLEM, rear arm .....	C- 4	GROMMET .....	B- 4	*	C- 6
EXHAUST PIPE ASSY 1 .....	B- 7	*	C-10	NOZZLE, main .....	B- 5
FLAP .....	C- 3	*	C-11	NUT .....	B- 2
FLOAT .....	B- 5	*	C-15	*	B- 7
FOOTREST 1 .....	D- 2	*	D- 6	*	B-10
FOOTREST 2 .....	D- 2	GUIDE, spring .....	B-10	*	B-11
FORK, shift 1 .....	B-14	HANDLEBAR .....	C-15	*	B-13
FORK, shift 2 .....	B-14	HEAD, cylinder 1 .....	B- 2	*	C- 7
FORK, shift 3 .....	B-14	HOLDER .....	B- 8	*	C-15
FRAME COMP. ....	C- 2	HOLDER 1 .....	B- 2	*	D- 2
FRONT FENDER COMP. ....	C- 3	HOLDER, cable .....	C- 7	*	U- 4
FRONT FORK ASSY (L.H.) .....	C- 8	*	C- 9	*	D- 7
FRONT FORK ASSY (R.H.) .....	C- 8	HOLDER, handle upper .....	C- 7	NUT, cable adjusting .....	B- 5
FUEL COCK ASSY 1 .....	C-10	HOLDER, lever 1 .....	D- 8	NUT, self-locking .....	C- 2
FUEL TANK COMP. ....	C-10	HOLDER, lever 2 .....	D- 8	*	C- 4
GASKET .....	B- 5	HOLDER, lever lower 1 .....	D- 8	*	C- 5
*	B- 8	HOOK .....	B- 4	*	C- 6
*	C- 8	HOSE .....	B- 8	*	C-14
*	C- 9	*	C-10	NUT, u .....	B- 7
*	C-10	HUB, front .....	C-12	*	C- 3
GASKET, cap .....	C-10	HUB, rear .....	C-13	*	C-13
GASKET, crankcase cover 1 .....	B- 9	IGNITION COIL ASSY .....	D- 9	*	D- 2
GASKET, crankcase cover 3 .....	B- 9	INNER TUBE COMP.1 .....	C- 8	*	D- 8
GASKET, cylinder .....	B- 2	JET, main (#130) .....	B- 5	NUT, wing .....	D- 2
GASKET, cylinder head 1 .....	B- 2	JET, main (#140) .....	B- 5	O-RING .....	B- 5
GASKET, drain plug .....	C- 8	JET, main (#150) .....	B- 5	*	B- 9
*	C- 9	JET, pilot (# 46) .....	B- 5	*	B-10
GASKET, exhaust pipe .....	B- 7	JET, pilot (# 48) .....	B- 5	OIL SEAL .....	B- 3
GASKET, float chamber .....	B- 5	JET, pilot (# 50) .....	B- 5	*	B-10
GASKET, manifold .....	B- 4	JOINT, air cleaner 1 .....	B- 4	*	B-11
GASKET, muffler .....	B- 7	JOINT, carburetor .....	B- 4	*	B-12
GEAR UNIT ASSY .....	C-12	JOINT, chain .....	C-14	*	B-15
GEAR, 1st wheel (39T) .....	B-12	KEY, straight .....	B-11	*	C- 4
GEAR, 2nd pinion (15T) .....	B-12	KEY, woodruff .....	B- 3	*	C- 5
GEAR, 2nd wheel (37T) .....	B-12	KICK AXLE ASSY .....	B-10	*	C- 8
GEAR, 3rd pinion (22T) .....	B-12	KICK CRANK ASSY .....	B-10	*	C-13
GEAR, 3rd wheel (31T) .....	B-12	LENS ASSY .....	D- 6	PEDAL, brake .....	D- 2
GEAR, 4th wheel (31T) .....	B-12	LENS, taillight .....	D- 7	PIN .....	D- 2
GEAR, 5th pinion (27T) .....	B-12	LEVER 1 .....	D- 8	PIN, clevis .....	D- 2
GEAR, 5th wheel (26T) .....	B-12	LEVER 2 .....	D- 8	PIN, cotter .....	D- 2
GEAR, 6th pinion (31T) .....	B-12	LEVER, brake pedal .....	D- 2	*	D- 3
GEAR, 6th wheel (21T) .....	B-12	LEVER, camshaft .....	C-13	PIN, crank 1 .....	B- 3
GEAR, kick (13T) .....	B-10	LEVER, camshaft 1 .....	C-12	PIN, dowel .....	B- 2

PARTS NAME INDEX

DESCRIPTION	GRID NO.	DESCRIPTION	GRID NO.	DESCRIPTION	GRID NO.
PIN, dowel	B- 8	RIVET, blind	B- 4	SPACER 1	B-11
*	B-14	*	C- 3	SPACER, bead	C-12
*	B-15	ROD, connecting	B- 3	*	C-13
PIN, float	B- 5	ROD, connecting 1	C- 5	SPEEDOMETER ASSY	D- 5
PIN, piston	B- 3	ROD, push 1	B-11	SPEEDOMETER CABLE ASSY	D- 5
PIPE	B- 5	ROD, push 2	B-11	SPINDLE, taper	C- 8
PISTON (0.25MM O/S)	B- 3	ROTOR ASSY	D- 4	*	C- 9
PISTON (0.50MM O/S)	B- 3	SCREW	B-11	SPOKE SET, front	C-12
PISTON (0.75MM O/S)	B- 3	*	C- 3	SPOKE SET, rear	C-13
PISTON (1.00MM O/S)	B- 3	*	C-10	SPRING, compression	B-10
PISTON (STD)	B- 3	SCREW, bind	B- 7	*	B-11
PISTON RING SET (1ST O/S)	B- 3	SCREW, countersunk	B-10	*	D- 2
PISTON RING SET (2ND O/S)	B- 3	SCREW, flat head	B- 8	SPRING, front fork	C- 8
PISTON RING SET (3RD O/S)	B- 3	SCREW, lens fitting	D- 7	*	C- 9
PISTON RING SET (4TH O/S)	B- 3	SCREW, oval head	C-15	SPRING, screw	D- 6
PISTON RING SET (STD)	B- 3	SCREW, pan head	B- 4	SPRING, tension	C-12
PLATE	B- 8	*	B- 8	*	C-13
PLATE, bearing cover	B- 8	*	B- 9	*	D- 2
PLATE, brake shoe	C-12	*	C- 3	SPRING, throttle valve	B- 5
*	C-13	*	C-15	SPRING, torsion	B-10
PLATE, clutch 2	B-11	*	D- 4	*	B-11
PLATE, friction	B-11	*	D- 8	*	B-14
PLATE, indicator	C-12	*	D- 9	*	B-15
PLATE, lever fitting	C-10	SCREW, pan head with washer	B- 4	*	C- 4
PLATE, pressure 1	B-11	*	B- 5	*	C-13
PLATE, stopper	D- 6	SCREW, panhead tapping	D- 6	*	D- 2
PLATE, thrust 1	B-11	SCREW, rim adjuster	D- 6	SPROCKET, drive (12T)	B-12
PLUG	B- 8	SCREW, with washer	B-11	SPROCKET, driven (42T)	C-13
PLUG CAP ASSY	D- 9	*	C- 4	STAND, side	D- 2
PLUG, drain	B- 5	SEAL 1	C- 3	*	D- 3
*	C- 8	SEAL, cock	C-10	STATOR ASSY	D- 4
*	C- 9	SEAL, dust	C- 8	STAY 1	B- 4
PLUG, oil level	B- 9	SEAT, spring upper	C- 8	STAY, engine 3	C- 2
PLUG, spark (NGK BR6ES)	B- 2	*	C- 9	STAY, light switch	D- 9
PLUG, straight screw	B- 8	SHAFT, pivot	C- 4	STOP SWITCH ASSY	D- 9
PLUNGER, starter	B- 5	SHIFT CAM ASSY	B-14	STOPPER	D- 2
PRIMARY DRIVEN GEAR COMP.	B-11	SHIFT PEDAL ASSY	B-15	STOPPER LEVER ASSY	B-14
PROTECTOR, chain	C- 4	SHIFT SHAFT ASSY	B-15	STOPPER, reed valve	B- 4
PROTECTOR, engine	C- 2	SHIM (0.3T)	C- 4	SWITCH, handle 1	D- 8
PULLER, chain 1	C-13	SHOCK ABSORBER ASSY, rear	C- 6	TAILLIGHT ASSY	D- 7
PUSH LEVER ASSY	B-11	SILENCER ASSY	B- 7	TENSIONER	C- 2
REAR ARM COMP.	C- 4	SINGLE SEAT ASSY	C-11	*	C- 4
REAR FENDER COMP.	C- 3	SOCKET CORD ASSY	D- 6	TERMINAL, earth 2	D- 4
REED VALVE ASSY	B- 4	SPACER	B-15	THROTTLE SCREW SET	B- 5
REED, valve	B- 4	*	C- 8	TIRE (2.75-21)	C-12
RIM (1.60-21)	C-12	*	C- 9	TIRE (4.00-18)	C-13
RIM (2.15-18)	C-13	*	C-12	TOOL KIT	C- 2
RIM, taillight	D- 7	*	C-13	TUBE (2.75-21)	C-12

PARTS NAME INDEX

DESCRIPTION	GRID NO.	DESCRIPTION	GRID NO.	DESCRIPTION	GRID NO.
TUBE (4.00-18) .....	C-13				
TUBE, outer 1 .....	C- 8				
TUBE, outer 2 .....	C- 8				
TUBE, throttle guide .....	C-15				
UNDER BRACKET COMP. ....	C- 9				
VALVE, throttle 1 .....	B- 5				
VOLTAGE REGULATOR ASSY .....	D- 9				
WASHER .....	B- 3				
*	B-12				
*	D- 7				
WASHER, lock .....	B-11				
*	B-12				
WASHER, main jet .....	B- 5				
WASHER, plain .....	B- 4				
WASHER, plate .....	B- 2				
*	B- 7				
*	B-10				
*	B-11				
*	B-12				
*	C- 2				
*	C- 3				
*	C- 4				
*	C- 5				
*	C-10				
*	C-12				
*	C-13				
*	C-14				
*	D- 2				
*	D- 3				
*	D- 4				
*	D- 6				
*	D- 8				
WASHER, spring .....	B- 4				
*	B- 7				
*	B-11				
*	C- 9				
*	D- 4				
*	D- 8				
WASHER, spring upper .....	C- 8				
WIRE HARNESS ASSY .....	D- 9				



COPY RIGHT: ALL RIGHTS RESERVED  
NO PART OF THIS PUBLICATION MAY BE  
REPRODUCED WITHOUT PERMISSION.



**YAMAHA**

YAMAHA MOTOR CO., LTD.  
2500 SHINGAI IWATA-SHI SHIZUOKA-KEN JAPAN

**PRINTED IN JAPAN**  
**First edition Sep., 1983**

**T6**