

MODEL **DT1C-M**

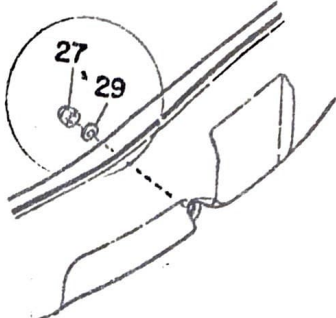
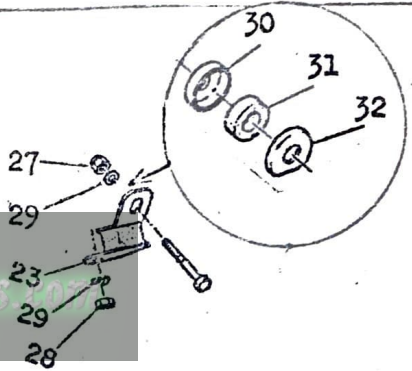
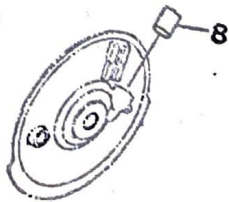


www.legends-yamaha-enduros.com

This Parts List is for the exclusive parts for the D T 1 C - M
Please refer to D T 1 B Parts List for the parts not listed in this publication.

DT1C-M PARTS LIST CORRECTION

Please correct your parts list as shown below.

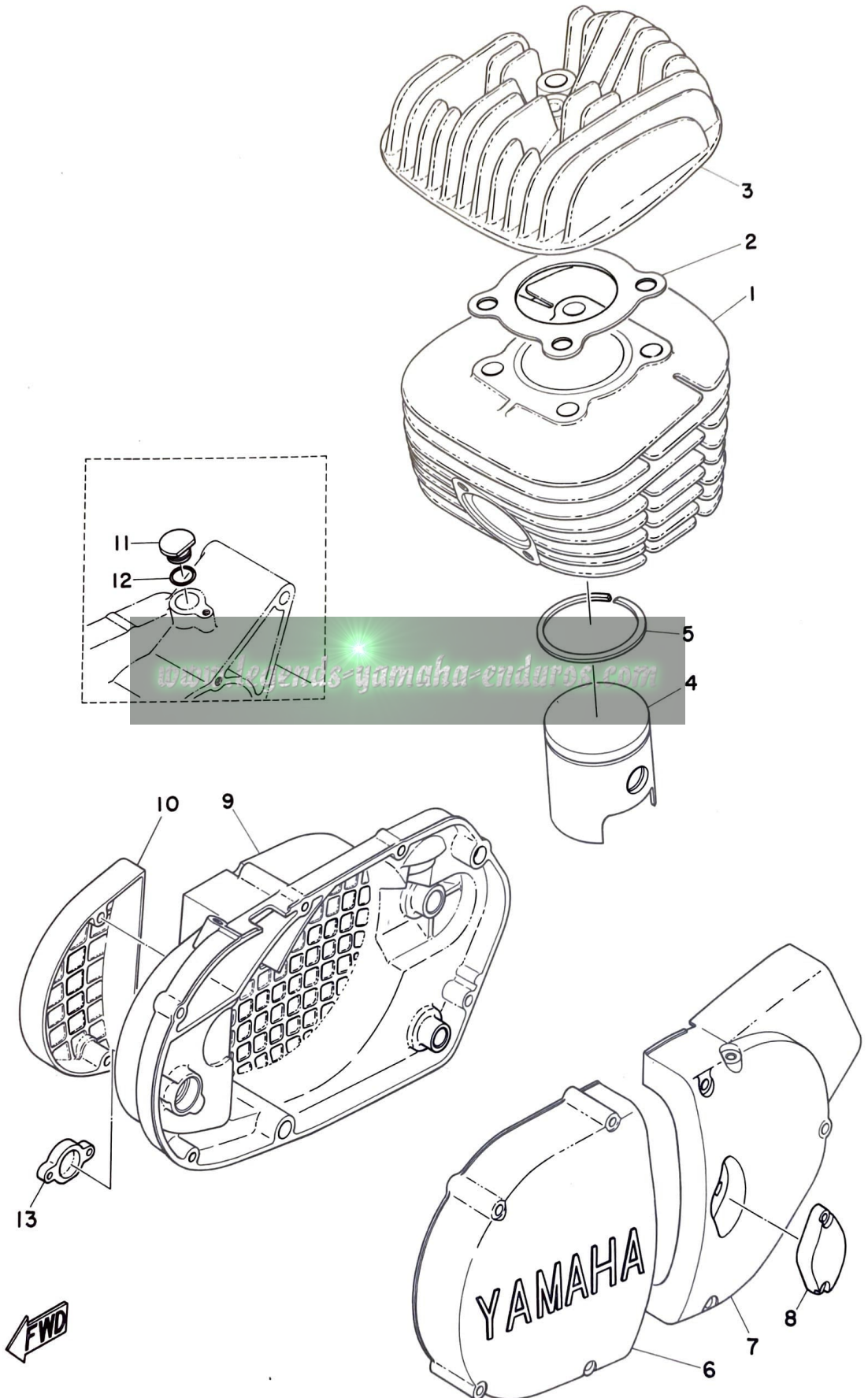
PAGE	REF. NO.	PARTS LIST READ	PARTS LIST SHOULD READS
5	Fig 3	Please dismiss the parts in a circle from your parts list.	
5	Fig 3	Please add the parts in a circle on your parts list.	
6	3-27	Q'ty 2 pcs.	Q'ty 1 pc.
	3-29	Q'ty 3 pcs	Q'ty 2 pcs
	3-30	-----	214-14793-01 Addition (Plate, muffler 1)
	3-31	-----	214-14763-02 Addition (Spacer)
	3-32	-----	214-14794-00 Addition (Plate, muffler 2)
10	5-11	623-23485-00	263-23485-00
11	Fig 6	Parts List shown following plate and spacer with rear wheel ass'y, but it should be with front wheel ass'y. Please make a necessary correction on your parts list.	
12	6- 8	152-23139-00	152-25139-00

CONTENTS

Fig. 1	Engine	1
Fig. 2	Tachometer Gear (ALTERNATE PARTS)	3
Fig. 3	Carburetor, Air Cleaner & Exhaust Pipe	5
Fig. 4	Flywheel Magneto	7
Fig. 5	Front fork & Front fender	9
Fig. 6	Front & Rear Wheel	11

www.legends-yamaha-enduros.com

Fig. 1 ENGINE

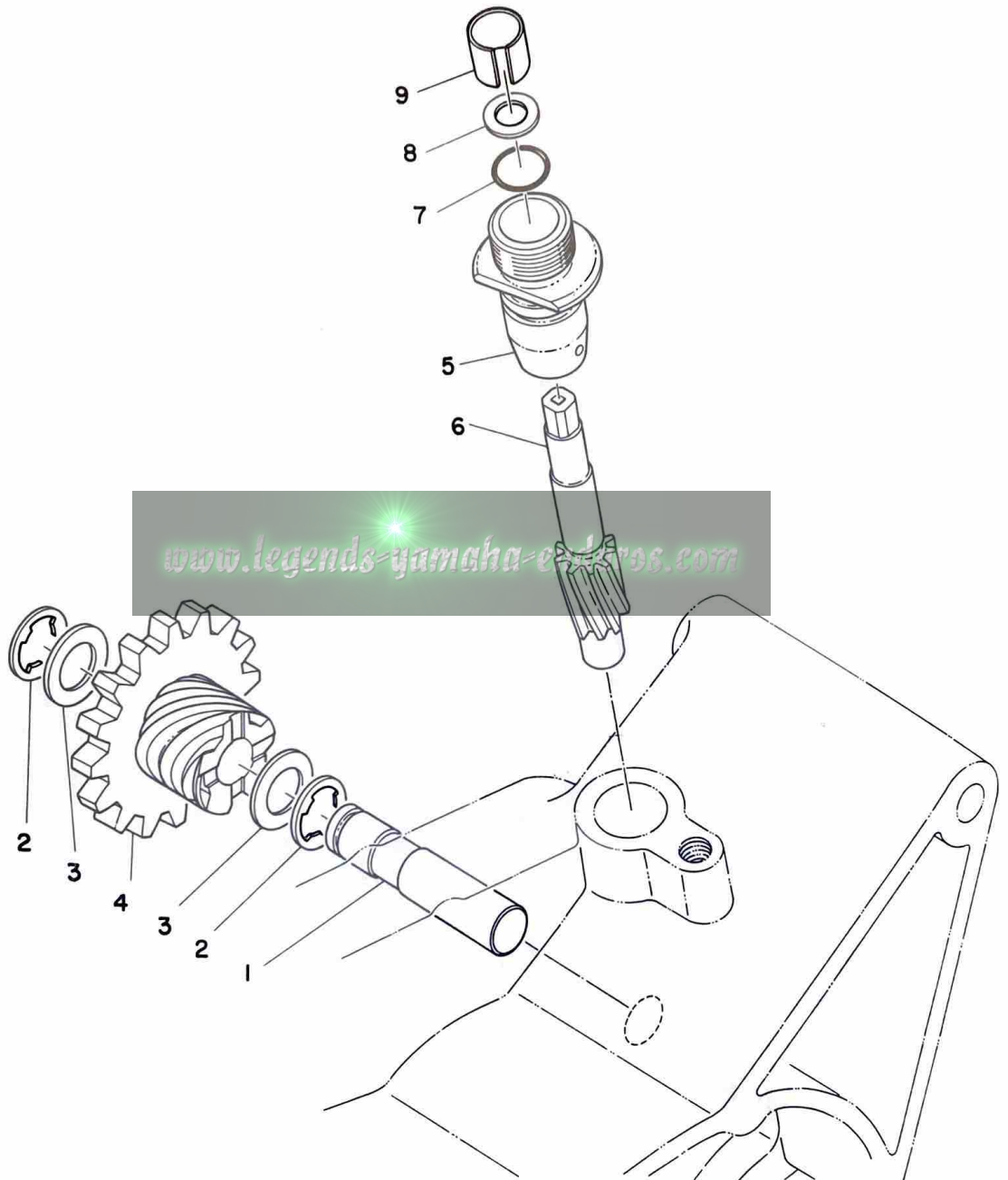


ENGINE

Ref No.	Parts No.	Parts Name	Description	Q'ty	S · R	Remarks
1- 1	285-11311-00	CYLINDER		1		
1- 2	285-11181-00	GASKET, cylinder head		1		
1- 3	285-11111-00	HEAD, cylinder		1		
1- 4	285-11631-00-96	PISTON (STD)		U.R. 1		
	285-11631-00-97	PISTON (STD)				
	285-11631-00-98	PISTON (STD)				
	285-11635-00	PISTON (1st o.s)	.25mm	1		
	285-11636-00	PISTON (2nd o.s)	.50mm	1		
1- 5	285-11611-00	RING, piston (STD)		1		
	285-11611-10	RING, piston (1sto.s)	.25mm	1		
	285-11611-20	RING, piston (2ndo.s)	.50mm	1		
1- 6	233-15411-00	COVER, crankcase (L.H) (1)		1		
1- 7	233-15421-00	COVER, crankcase (L.H) (2)		1		
1- 8	233-15417-00	COVER, cap		1		
1- 9	233-15431-00	COVER, crankcase (R.H)		1		
1-10	233-15416-00	COVER, oil pump		1		
1-11	241-17819-00	CAP, housing		1		
1-12	93210-13016	O-RING	1.8-13	1		
ALTERNATE PARTS (for with out oil pump)						
1-13	161-15426-00	COVER, oil pump		1		



Fig. 2 TACHOMETER GEAR (ALTERNATE PARTS)



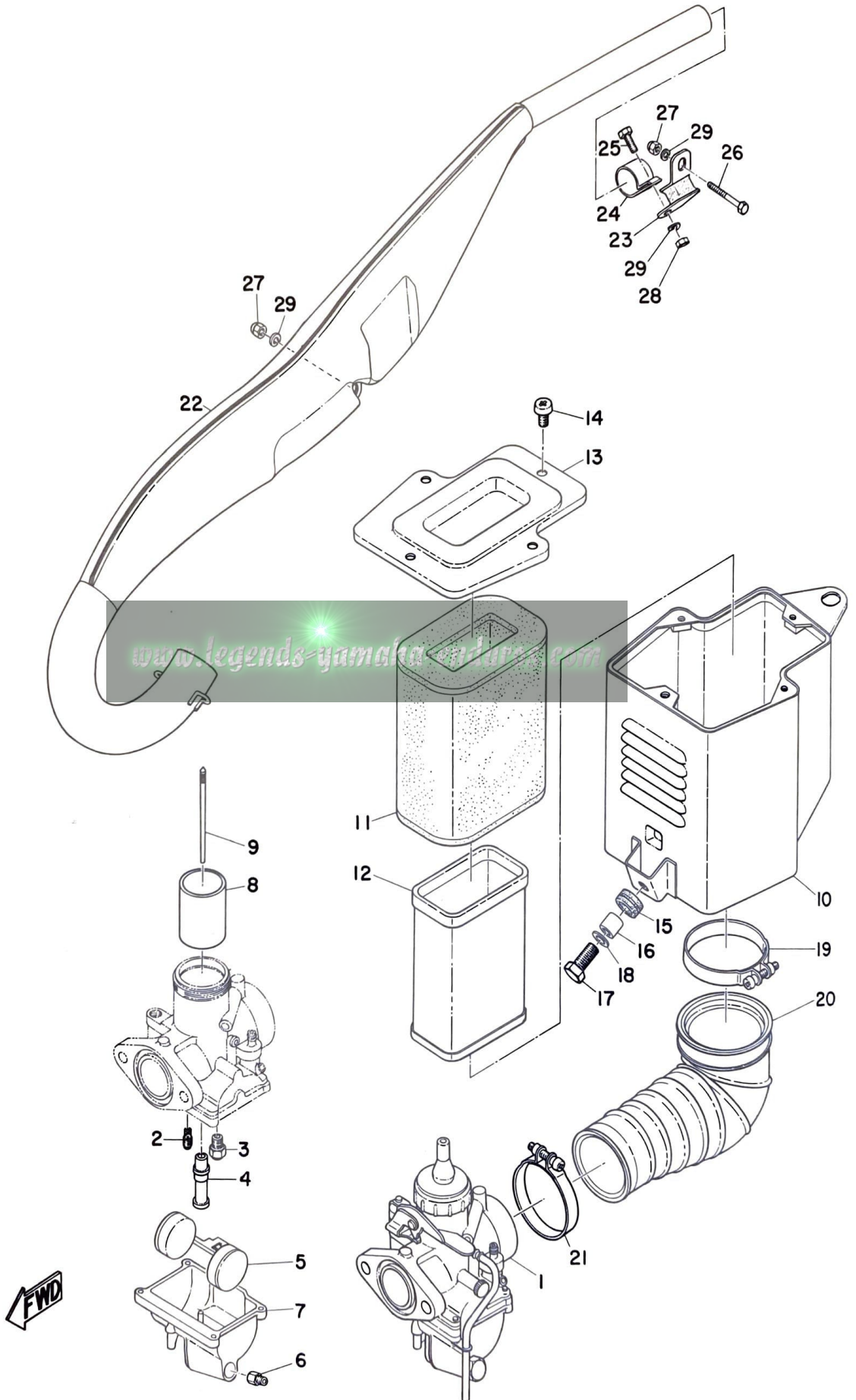
TACHOMETER GEAR (ALTERNATE PARTS)

Ref No.	Parts No.	Parts Name	Description	Q'ty	S · R	Remarks
2- 1	214-17861-00	AXLE, drive gear		1		
2- 2	93430-09019	CIRCLIP	E-9	2		
2- 3	214-17837-00	SHIM	10.2-16-1	2		
2- 4	214-17830-00	DRIVE GEAR ASS'Y		1		
2- 5	214-17811-01	HOUSING		1		
2- 6	214-17841-01	GEAR, driven		1		
2- 7	93210-07100	O-RING	2.2-7.2	1		
2- 8	214-17847-00	SHIM	2.5-10.8-0.4	1		
2- 9	214-17815-00	BUSHING		1		

www.legends-yamaha-enduros.com



Fig. 3 CARBURETOR, AIR CLEANER & EXHAUST PIPE

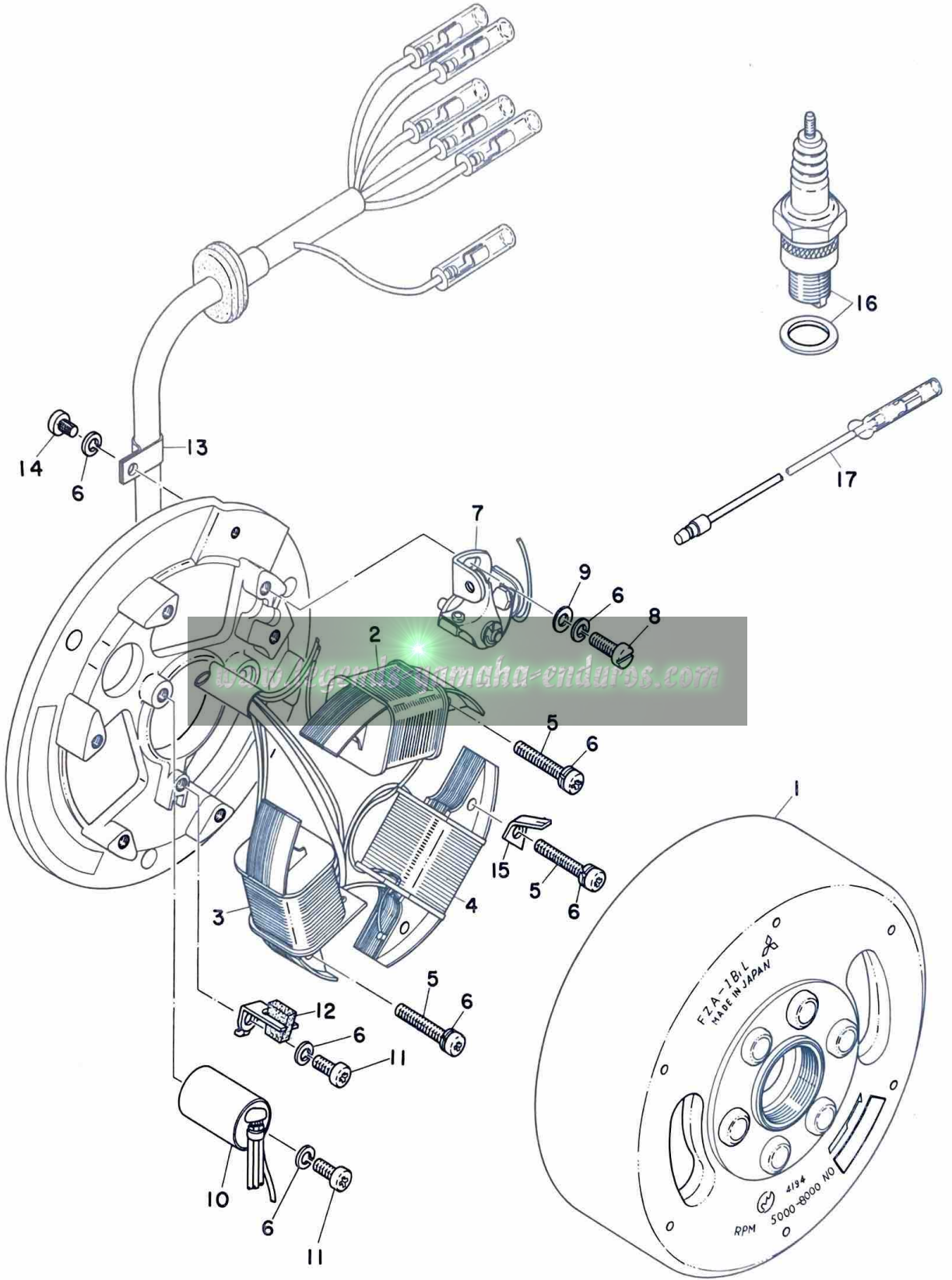


CARBURETOR, AIR CLEANER & EXHAUST PIPE

Ref No.	Parts No.	Parts Name	Description	Q'ty	S · R	Remarks
3- 1	285-14101-60	CARBURETOR ASS'Y	(ISO)	1		
3- 2	193-14142-80	. JET, pilot	#80 (ISO)	1		
3- 3	284-14190-25	. VALVE SEAT ASS'Y	#2.5	1		
3- 4	145-14141-32	. NOZZLE, main	0.2	1		
3- 5	285-14185-00	. FLOAT		1		
3- 6	137-14143-38	. JET, main	#190	U. R 1		S. T. D
	137-14143-40	. JET, main	#200			
	137-14143-42	. JET, main	#210			
3- 7	285-14181-00	. BODY, float chamber		1		
3- 8	211-14112-35	. VALVE, throttle	#3.5	1		
3- 9	168-14116-07	. NEEDLE	5DP7-3	1		
3-10	285-14411-00	CASE, cleaner		1		
3-11	285-14451-00	ELEMENT		1		
3-12	285-14458-00	GUIDE, element		1		
3-13	285-14412-00	CAP, case		1		
3-14	92501-06010	SCREW, pan head		4		
3-15	214-21717-00	DAMPER, battery box (1)		1		
3-16	214-21633-00	CALLAR, fender mount (1)		1		
3-17	91201-06020	BOLT		1		
3-18	116-28324-00	WASHER, leg shield (2)	6.5-20-1.6	1		
3-19	285-14455-00	BAND		1		
3-20	285-14453-00	JOINT		1		
3-21	170-14455-00	BAND		1		
3-22	285-14610-10	EXHAUST PIPE ASS'Y		1		
3-23	285-14781-11	PLATE, muffler (3)		1		
3-24	285-14791-10	STAY, muffler(3)		1		
3-25	91201-06020	BOLT		1		
3-26	91201-06045	BOLT		1		
3-27	214-21635-00	NUT, crown		2		
3-28	92801-06100	NUT		1		
3-29	92901-06100	WASHER, spring		3		



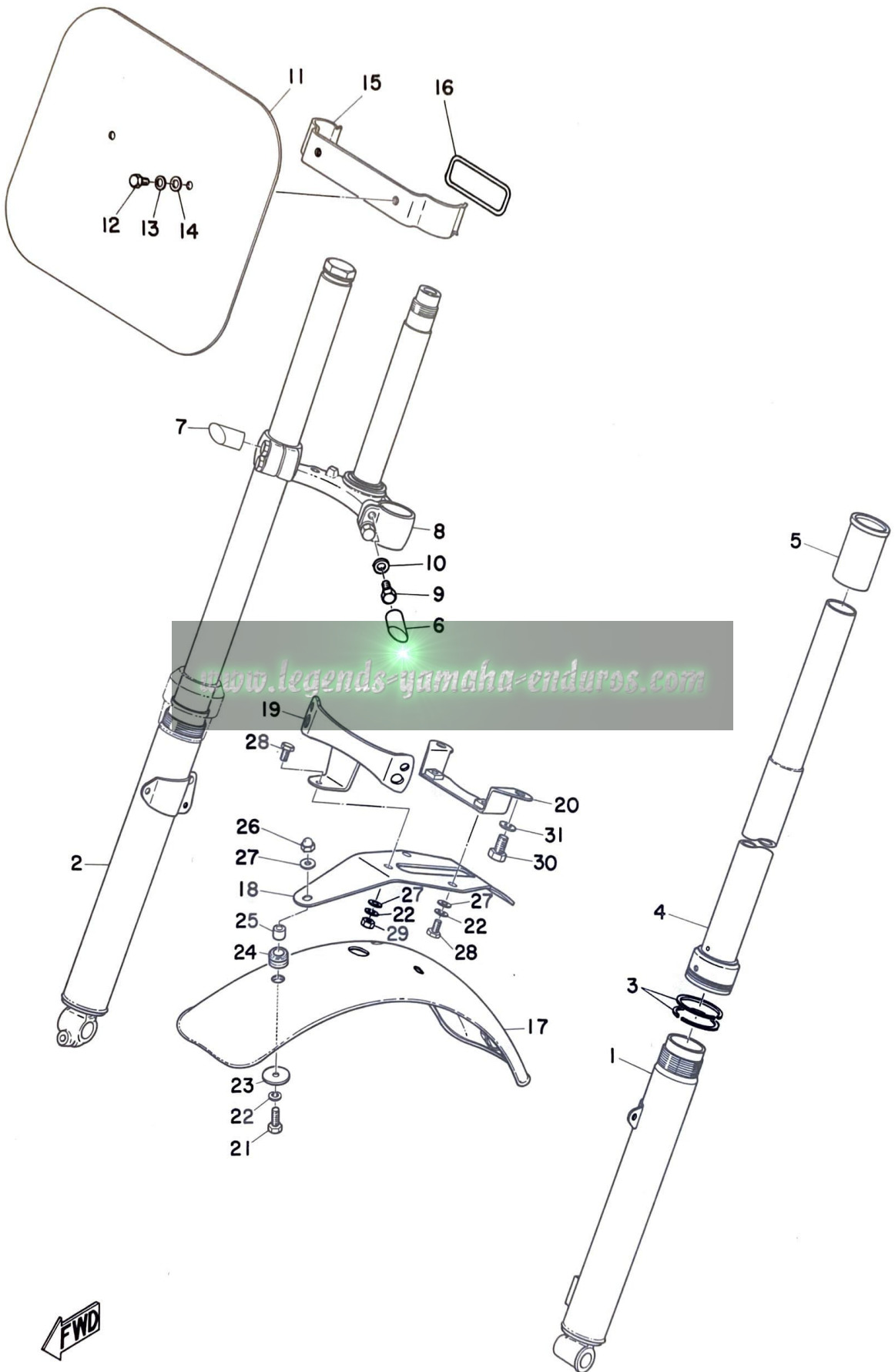
Fig. 4 FLYWHEEL MAGNETO



FLYWHEEL MAGNETO

Ref No.	Parts No.	Parts Name	Description	Q'ty	S·R	Remarks
4- 0-1	233-81300-20	FLYWHEEL MAGNETO ASS'Y	(ISO)	1		
4- 1	214-81350-22	. ROTOR ASS'Y		1		
4- 2	214-81312-21	. COIL, source		1		
4- 3	233-81313-20	. COIL, lighting (1)		1		
4- 4	233-81314-20	. COIL, lighting (2)		1		
4- 5	110-81348-20	. SCREW, pan head	(ISO)	6		
4- 6	92901-04100	. WASHER, spring		10		
4- 7	214-81321-20	. CONTACT BREAKER ASS'Y		1		
4- 8	110-81347-20	. SCREW, pan head	(ISO)	1		
4- 9	92901-04200	. WASHER, plain		1		
4-10	214-81326-20	. CONDENSER		1		
4-11	110-81346-20	. SCREW, pan head	(ISO)	2		
4-12	120-81331-20	. LUBRICATOR		1		
4-13	104-81328-20	. CLAMP, lead		1		
4-14	110-81345-20	. SCREW, pan head	(ISO)	1		
4-15	214-81332-21	. PLATE, timing		1		
4-16	94701-00017	PLUG, spark	B-10EN	1		
4-17	284-82319-00	WIRE, sub-lead		1		

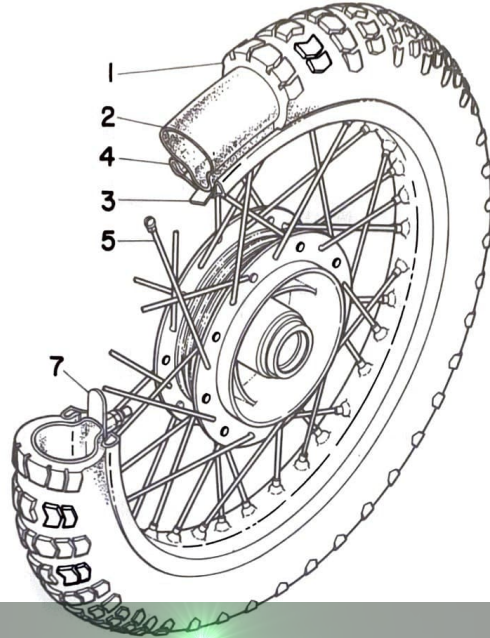
Fig. 5 FRONT FORK & FRONT FENDER



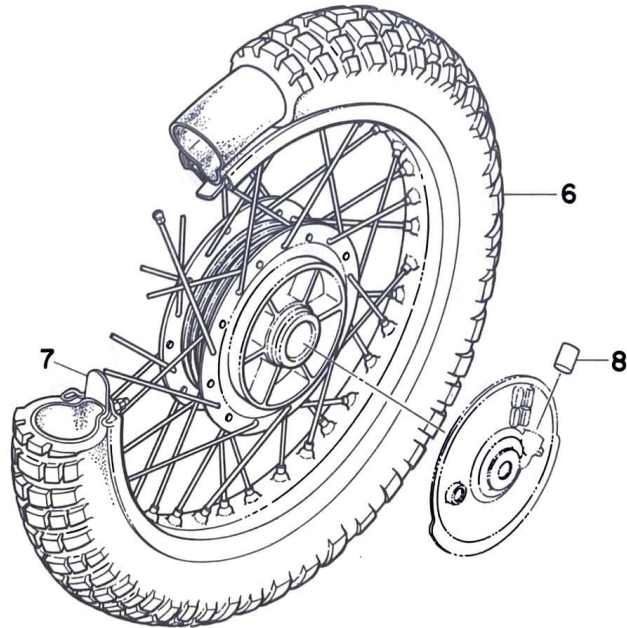
FRONT FORK & FRONT FENDER

Ref No.	Parts No.	Parts Name	Description	Q'ty	S · R	Remarks
5- 0-1	284-23100-00-35	FRONT FORK ASS'Y	(ISO)	1		
5- 1	275-23126-60-35	. TUBE, outer (L.H)		1		
5- 2	275-23136-60-35	. TUBE, outer (R.H)		1		
5- 3	275-23157-60	. RING, piston		4		
5- 4	275-23124-60	. TUBE, inner		2		
5- 5	275-23125-60	. METAL, slide		2		
5- 6	263-21581-00	. STAY, plate fitting (L.H)		1		
5- 7	263-21591-00	. STAY, plate fitting (R.H)		1		
5- 8	275-23340-60-33	. UNDER BRACKET COMP.		1		
5- 9	275-23346-60	. BOLT, under bracket		4		
5-10	92901-08200	WASHER, plain		2		
5-11	623-23485-00	PLATE, number		1		
5-12	91201-06015	BOLT		2		
5-13	92901-06100	WASHER, spring		2		
5-14	156-24187-00	WASHER, special (2)	6.5-26-1.6	2		
5-15	263-23487-00	STAY, plate		1		
5-16	93210-67057	O-RING	3-66.5	1		
5-17	284-21510-00-35	FRONT FENDER COMP.		1		
5-18	284-21512-00	BRACKET, fender		1		
5-19	284-21513-00	STAY, fender (1)		1		
5-20	284-21514-00	STAY, fender		1		
5-21	91201-06018	BOLT		2		
5-22	92901-06100	WASHER, spring		5		
5-23	256-21615-00	WASHER, special	6.5-19-1.2	2		
5-24	256-21541-00	DAMPER, fender mount		2		
5-25	256-21544-00	COLLAR, fender mount		2		
5-26	92803-06700	NUT, crown		2		
5-27	92901-06200	WASHER, plain		5		
5-28	91201-06012	BOLT		3		
5-29	92801-06100	NUT		1		
5-30	97201-08015	BOLT	(ISO)	2		
5-31	92901-08100	WASHER, spring		2		

Fig. 6 FRONT & REAR WHEEL



www.legends-yamaha-enduros.com



FRONT & REAR WHEEL

Ref No.	Parts No.	Parts Name	Description	Q'ty	S · R	Remarks
6- 1	94127-21071	TIRE, front	2.75-21-4PR	1		
6- 2	94227-21031	TUBE	2.75-21	1		
6- 3	94327-21024	BAND, rim	2.75-21	1		
6- 4	94416-21038	RIM	1.6A-21	1		
6- 5	214-25104-10	FRONT SPOKE SET		1s		
6- 6	94140-18070	TIRE, rear	4.00-18-4PR	1		
6- 7	214-25394-00	SPACER, bead		2		
6- 8	152-23139-00	PLUG, blind		1		

www.legends-yamaha-enduros.com

NUMERICAL INDEX

Ref No.	Parts No.	Ref No.	Parts No.	Ref No.	Parts No.
4-13	104-81328-20	1- 9	233-15431-00	3- 7	285-14181-00
4-14	110-81345-20	4- 0-1	233-81300-20	3- 5	285-14185-00
4-11	110-81346-20	4- 3	233-81313-20	3-10	285-14411-00
4- 8	110-81347-20	4- 4	233-81314-20	3-13	285-14412-00
4- 5	110-81348-20	1-11	241-17819-00	3-11	285-14451-00
3-18	116-28324-00	5-24	256-21541-00	3-20	285-14453-00
4-12	120-81331-20	5-25	256-21544-00	3-19	285-14455-00
3- 6	137-14143-38	5-23	256-21615-00	3-21	285-14455-10
3- 6	137-14143-40	5- 6	263-21581-00	3-12	285-14458-00
3- 6	137-14143-42	5- 7	263-21591-00	3-22	285-14610-10
3- 4	145-14141-32	5-11	263-23485-00	3-23	285-14781-11
6- 8	152-23139-00	5-15	263-23487-00	3-24	285-14791-10
5-14	156-24187-00	5- 4	275-23124-60	5-28	91201-06012
1-13	161-15426-00	5- 5	275-23125-60	5-30	91201-06012
3- 9	168-14116-07	5- 1	275-23126-60-35	5-12	91201-06015
3- 2	193-14142-80	5- 2	275-23136-60-35	5-21	91201-06018
3- 8	211-14112-35	5- 3	275-23157-60	3-17	91201-06020
2- 5	214-17811-01	5- 8	275-23340-60-33	3-25	91201-06020
2- 9	214-17815-00	5- 9	275-23346-60	3-26	91201-06045
2- 4	214-17830-00	3- 3	284-14190-25	3-14	92501-06010
2- 3	214-17837-00	5-17	284-21510-00-35	3-28	92801-06100
2- 6	214-17841-01	5-18	284-21512-00	5-29	92801-06100
2- 8	214-17847-00	5-19	284-21513-00	5-26	92803-06700
2- 1	214-17861-00	5-20	284-21514-00	4- 6	92901-04100
3-16	214-21633-00	5- 0-1	284-23100-00-35	4- 9	92901-04200
3-27	214-21635-00	4-17	284-82319-00	3-20	92901-06100
3-15	214-21717-00	1- 3	285-11111-00	5-13	92901-06100
6- 5	214-25104-10	1- 2	285-11181-00	5-22	92901-06100
6- 7	214-25394-00	1- 1	285-11311-00	5-27	92901-06200
4- 2	214-81312-21	1- 5	285-11611-00	5-31	92901-08100
4- 7	214-81321-20	1- 5	285-11611-10	5-10	92901-08200
4-10	214-81326-20	11- 5	285-11611-20	2- 7	93210-07100
4-15	214-81332-21	1- 4	285-11631-00-96	1-12	93210-13016
4- 1	214-81350-22	1- 4	285-11631-00-97	5-16	93210-67057
1- 6	233-15411-00	1- 4	285-11631-00-98	2- 2	93430-09019
1-10	233-15416-00	1- 4	285-11635-00	6- 1	94127-21071
1- 8	233-15417-00	1- 4	285-11636-00	6- 6	94140-18070
1- 7	233-15421-00	3- 1	285-14101-60	6- 2	94227-21031

NUMERICAL INDEX

Ref No.	Parts No.	Ref No.	Parts No.	Ref No.	Parts No.
6- 3	94327-21024				
6- 4	94416-21038				
4-16	94701-00017				
5-30	97201-08015				

www.legends-yamaha-enduros.com

www.legends-yamaha-enduros.com

First edition, Nov., '69

YAMAHA DT1C-M

PARTS LIST

YAMAHA MOTOR CO., LTD.

HAMAKITA JAPAN

www.legends-yamaha-enduros.com