

MODEL RT1-B

MODEL RT1-MX

www.legends-yamaha-enduros.com

This Parts List is for the exclusive parts for the RT1-B/RT1-MX.
Please refer to RT1/RT1-M Parts List for the parts not listed in this
publication.

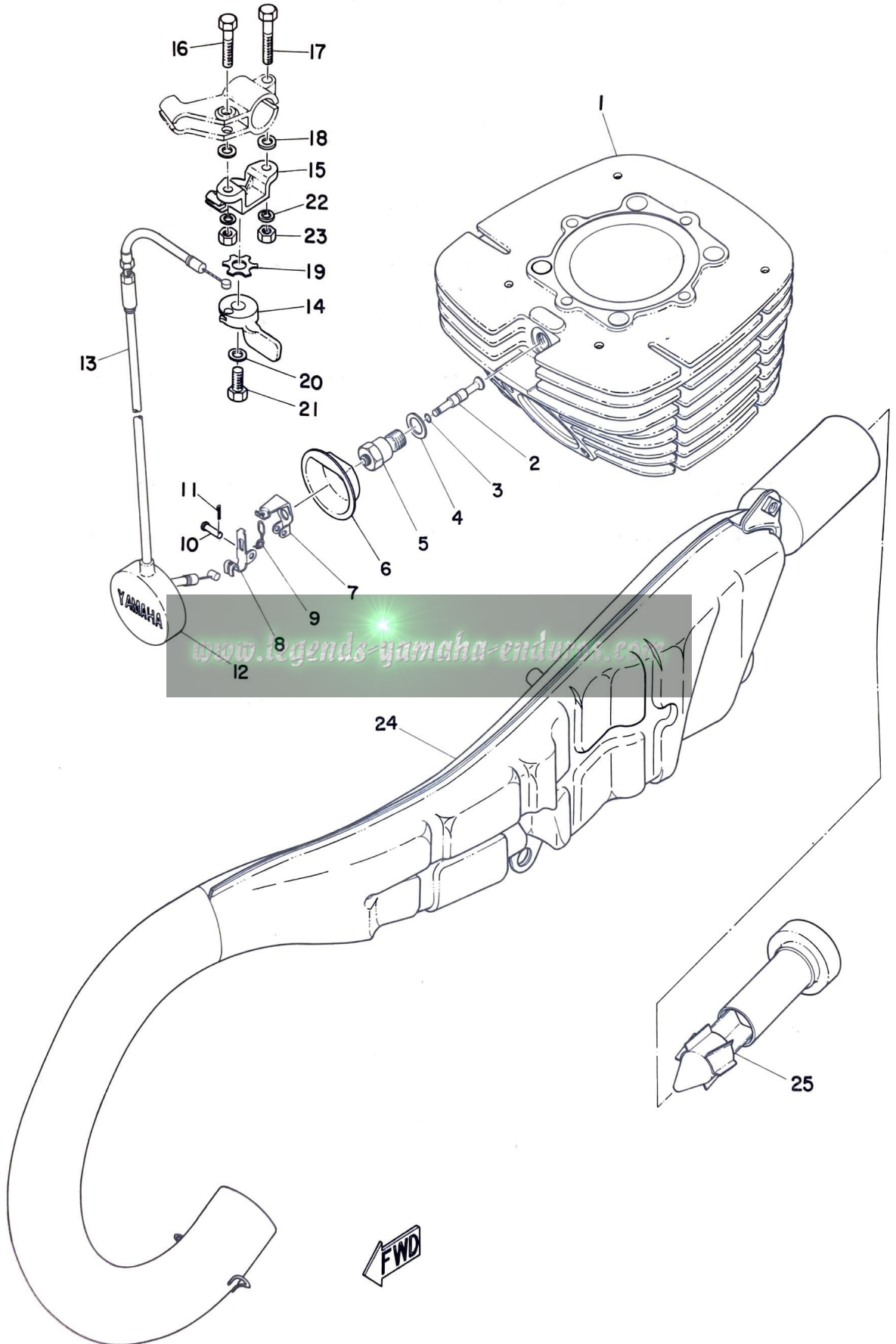
CONTENTS

Fig. 1	Engine	1
Fig. 2	Frame	5
Fig. 3	Front Fork	7
Fig. 4	Tail Lamp	11
Fig. 5	Flasher Lamp	15
Fig. 6	Electrical	17
RT1-MX			
Fig. 7	Front Fork	21

NUMERICAL INDEX



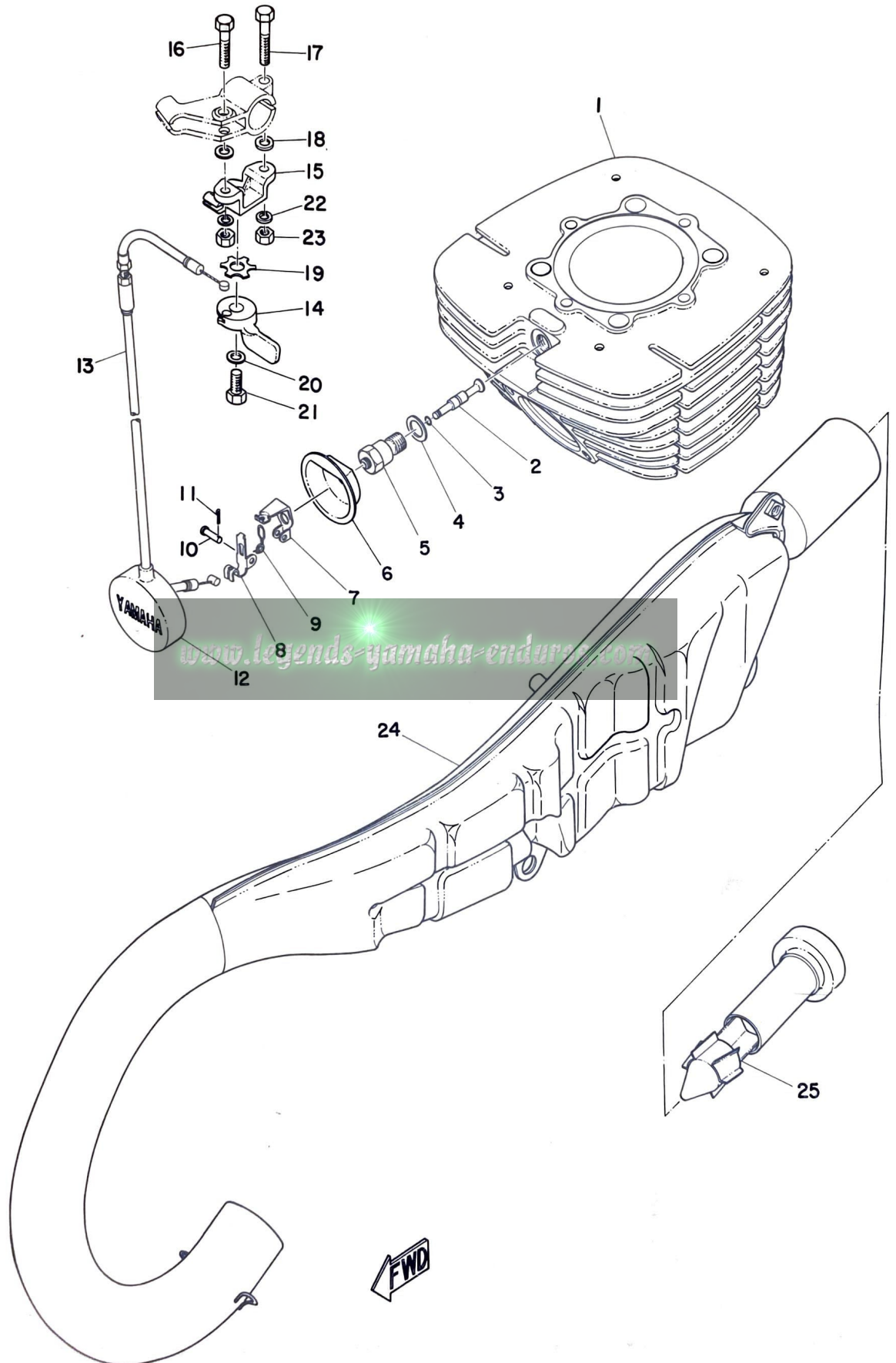
Fig. 1 ENGINE



ENGINE

Ref. No.	Part No.	Description	Q'ty	Applicable Machine No.	Remarks
1- 1	275-11311-01	CYLINDER	1		
1- 2	812-12281-00	VALVE, decompression	1		
1- 3	93210-04092	O-RING	1		
1- 4	812-11198-00	GASKET	1		
1- 5	275-12283-00	BRACKET, decompression	1		
1- 6	275-12279-00	PLATE	1		
1- 7	812-12273-00	HOLDER, wire	1		
1- 8	275-12282-00	LEVER, decompression	1		
1- 9	812-12287-00	SPRING, decompression	1		
1-10	812-12284-00	PIN, decompression lever	1		
1-11	91402-16005	PIN, cotter	1		
1-12	275-12278-00	COVER, decompression	1		
1-13	275-26331-00	WIRE, decompression	1		
1-14	275-83981-00	LEVER, decompression	1		
1-15	275-83984-00	HOLDER, decompression lever ..	1		
1-16	91203-06030	BOLT	1		
1-17	91203-06035	BOLT	1		
1-18	275-83943-00	WASHER, special	2		
1-19	137-83944-00	WASHER, special	1		
1-20	92901-06200	WASHER, plain	1		
1-21	91201-06015	BOLT	1		
1-22	92901-06100	WASHER, spring	2		
1-23	92801-06100	NUT	2		
1-24	291-14610-30	EXHAUST PIPE ASS'Y	1		

Fig. 1 ENGINE

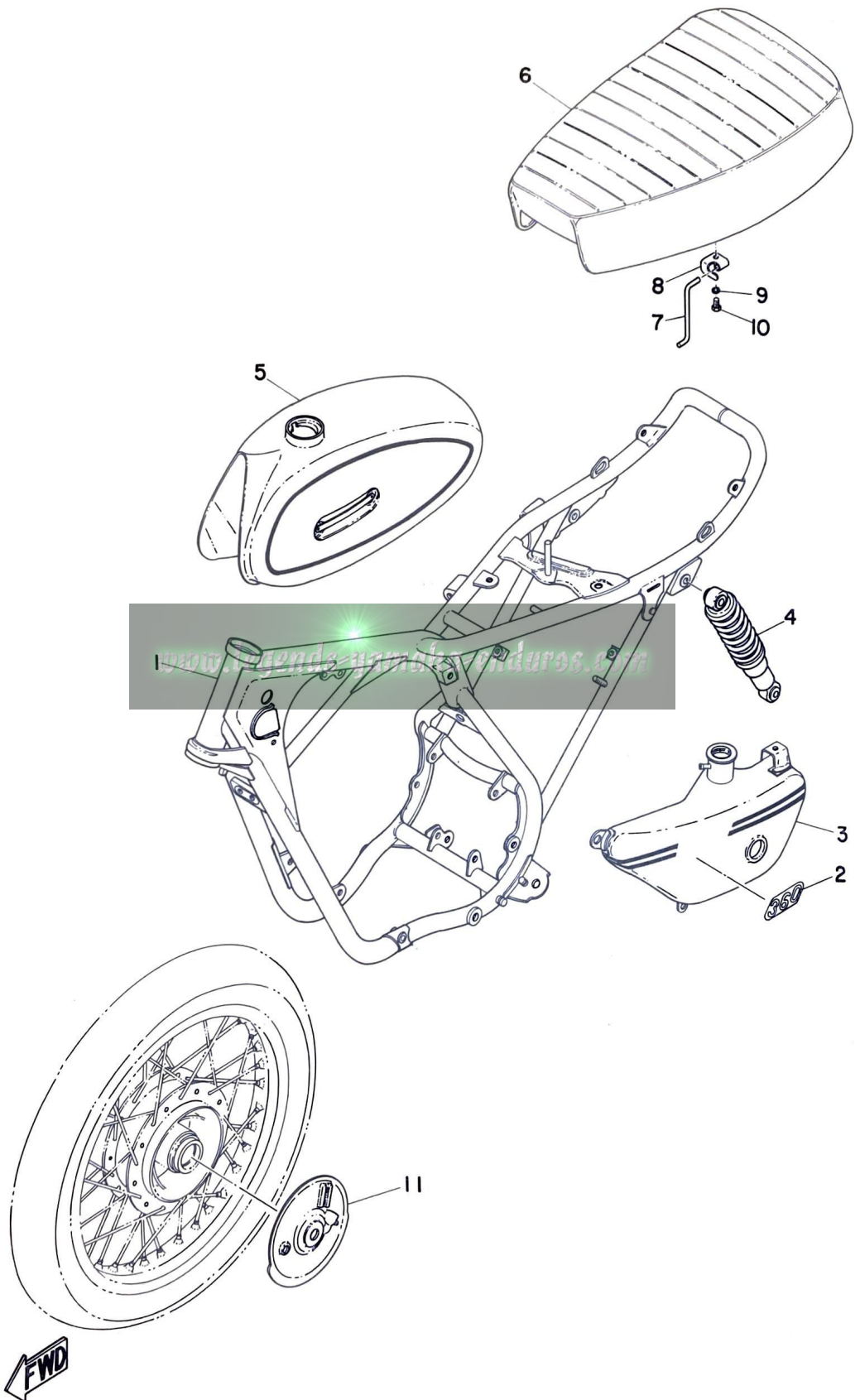


ENGINE

Ref. No.	Part No.	Description	Q'ty	Applicable Machine No.	Remarks
1-25	291-14752-30	PIPE, outlet	1		

www.legends-yamaha-enduros.com

Fig. 2 FRAME

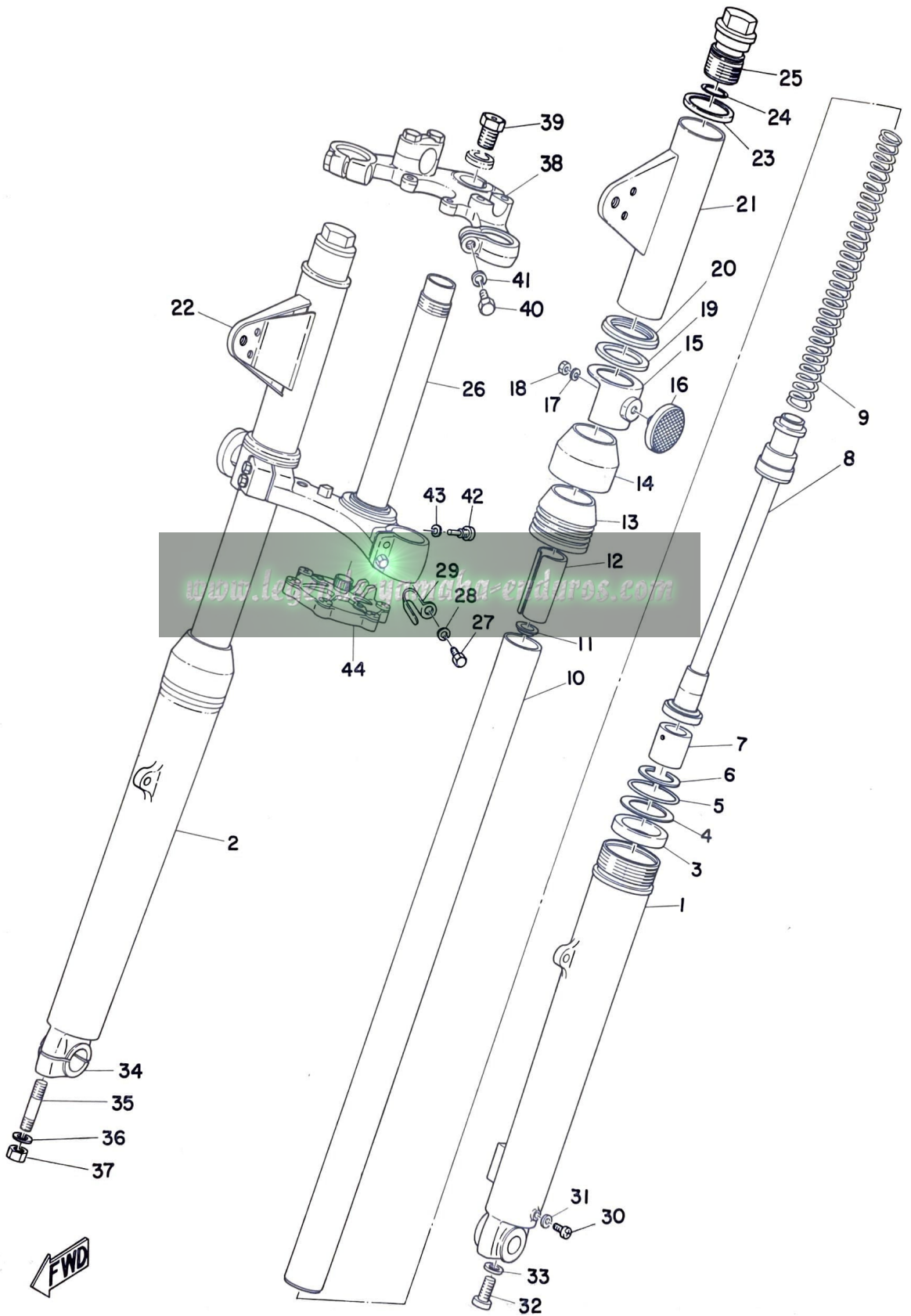


FRAME

Ref. No.	Part No.	Description	Q'ty	Applicable Machine No.	Remarks
2- 1	275-21110-01-33	FRAME COMP.	1		
2- 2	275-21787-02	EMBLEM, oil tank	1		
2- 3	214-21705-00-05	OIL TANK ASS'Y	1		
2- 4	291-22210-70	REAR CUSHION ASS'Y	2		
2- 5	214-24110-03-06	FUEL TANK COMP.	1		
2- 6	275-24710-00	SINGLE SEAT ASS'Y	1		
2- 7	278-24768-00	STOPPER, seat	1		
2- 8	276-24748-00	BRACKET, seat stopper	1		
2- 9	92901-06100	WASHER, spring	1		
2-10	91202-06012	BOLT	1		
2-11	275-25121-00	PLATE, brake shoe	1		



Fig. 3 FRONT FORK

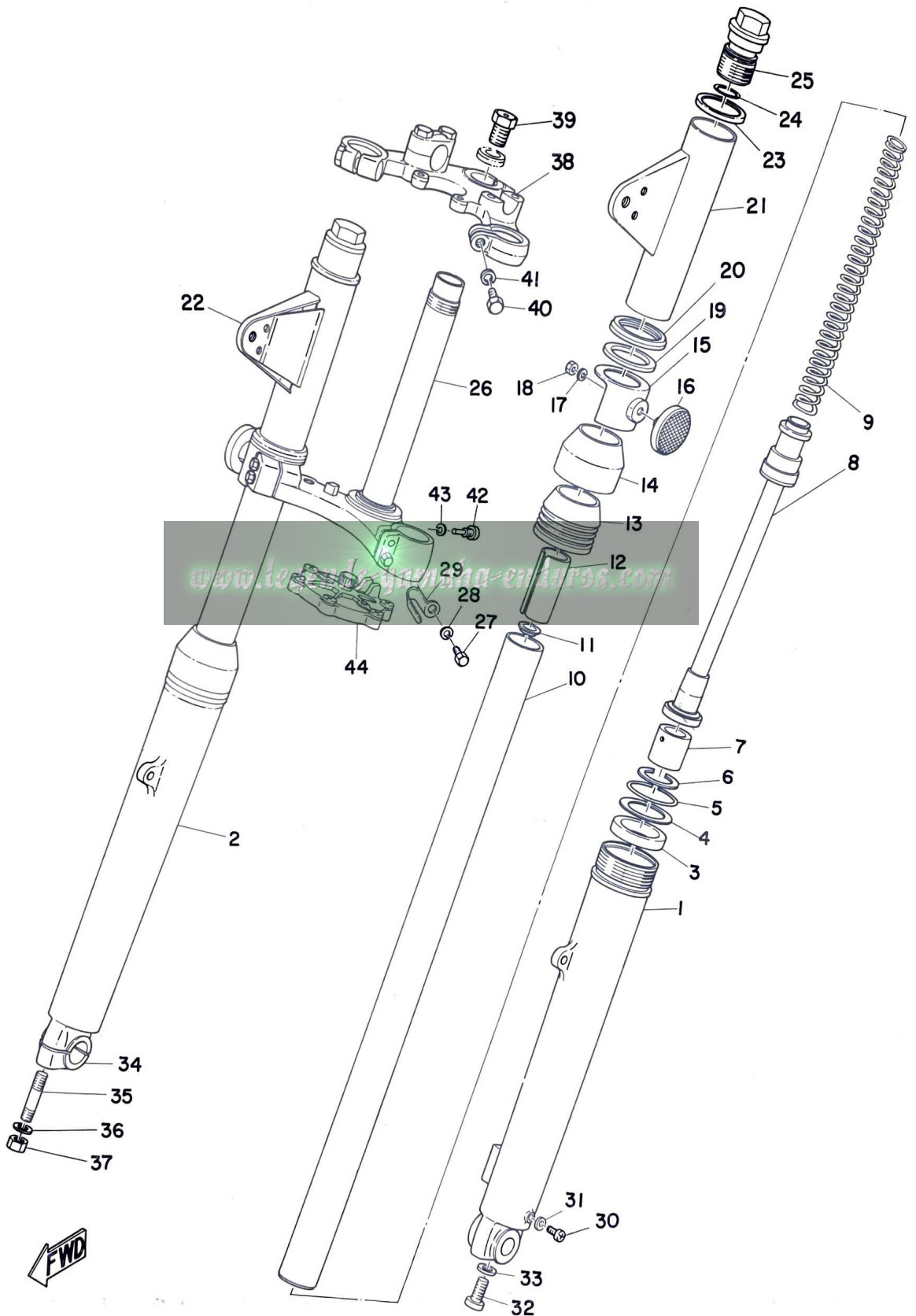


FRONT FORK

Ref. No.	Part No.	Description	Q'ty	Applicable Machine No.	Remarks
3- 0-1	291-23100-60-33	FRONT FORK ASS'Y	1		
3- 1	291-23126-60	. TUBE, outer left	1		
3- 2	291-23136-60	. TUBE, outer right	1		
3- 3	278-23145-50	. . OIL SEAL	2		
3- 4	214-23146-00	. . WASHER, oil seal	2		
3- 5	214-23156-00	. . CLIP, oil seal	2		
3- 6	93420-28025	. CIRCLIP	2		
3- 7	278-23171-50	. PISTON	2		
3- 8	291-23170-60	. CYLINDER COMP.	2		
3- 9	214-23141-00	. SPRING, fork	2		
3-10	291-23124-60	. TUBE, inner	2		
3-11	278-23142-50	. SEAT, spring upper	2		
3-12	291-23118-60	. SPACER	2		
3-13	278-23144-50	. SEAL, dust	2		
3-14	278-23148-50	. COVER, dust seal	2		
3-15	256-23122-61	. COVER, outer	2		
3-16	256-85111-00	. REFLECTOR	2		
3-17	92901-05100	. WASHER, spring	2		
3-18	98801-05100	. NUT	2		
3-19	214-23163-00	. PACKING (lamp stay)	2		
3-20	278-23116-50	. GUIDE, cover under	2		
3-21	291-23121-60-33	. COVER, upper left	1		
3-22	291-23131-60-33	. COVER, upper right	1		
3-23	278-23115-50	. GUIDE, cover upper	2		

www.legends-yamaha-enduros.com

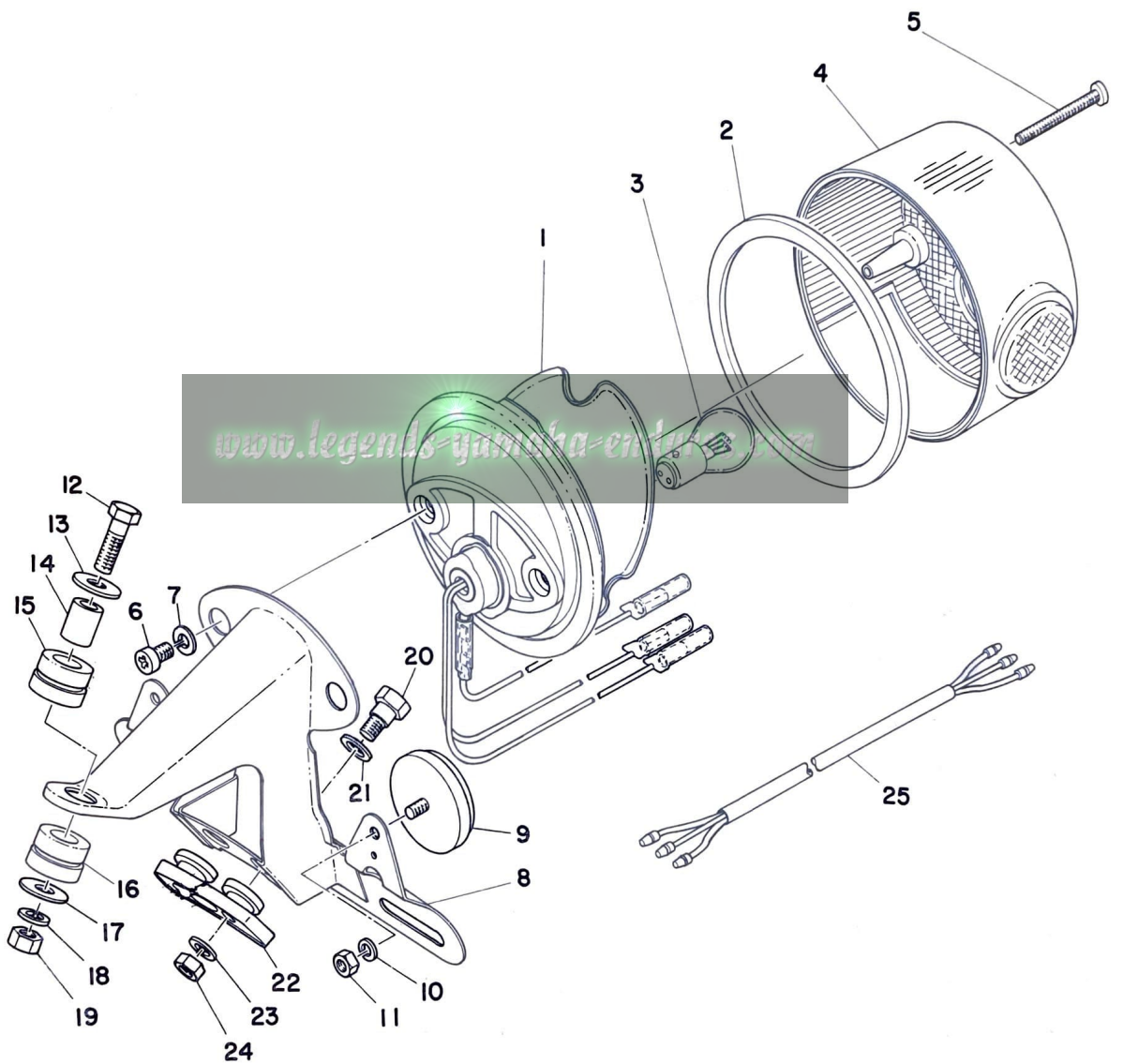
Fig. 3 FRONT FORK



FRONT FORK

Ref. No.	Part No.	Description	Q'ty	Applicable Machine No.	Remarks
3-24	214-23114-00	. PACKING	2		
3-25	291-23111-60	. BOLT, cap	2		
3-26	275-23340-60	. UNDER BRACKET COMP.	1		
3-27	275-23346-60	. BOLT, under bracket	4		
3-28	92901-08100	. WASHER, spring	4		
3-29	214-23318-00	. HOLDER, wire	1		
3-30	122-23119-01	. PLUG, drain	2		
3-31	122-23129-00	. GASKET, drain plug	2		
3-32	278-23181-50	. BOLT	2		
3-33	278-23158-50	. PACKING	2		
3-34	291-23167-60	. HOLDER, axle	1		
3-35	278-23128-50	. BOLT, axle holder	2		
3-36	92901-08100	. WASHER, spring	2		
3-37	98801-08100	. NUT	2		
3-38	275-23435-01	CROWN, handle	1		
3-39	214-23451-10	BOLT, steering fitting	1		
3-40	91204-10030	BOLT	2		
3-41	92901-10100	WASHER, spring	2		
3-42	214-23492-00	BOLT	1		
3-43	92901-06100	WASHER, spring	1		
3-44	214-23490-00	HANDLE DAMPER ASS'Y	1		

Fig. 4 TAIL LAMP

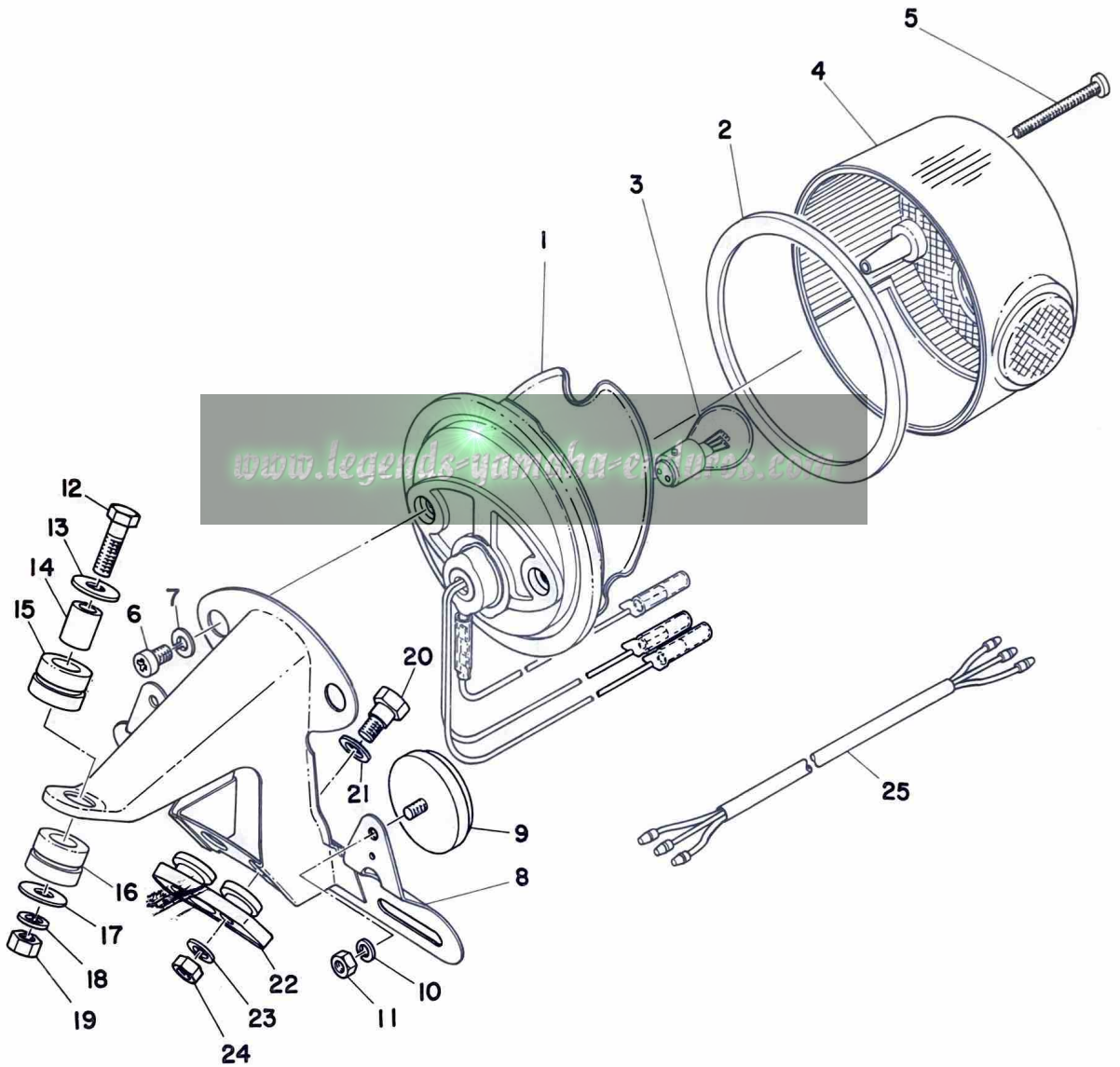


TAIL LAMP

Ref. No.	Part No.	Description	Q'ty	Applicable Machine No.	Remarks
4- 0-1	275-84510-60	TAIL LAMP UNIT ASS'Y	1		
4- 1	275-84511-60	. BASE, tail lamp	1		
4- 2	275-84523-60	. GASKET, tail lens	1		
4- 3	122-84514-30	. BULB, tail lamp (6V 17/5.3W)	1		
4- 4	275-84521-60	. LENS, tail lamp	1		
4- 5	275-84524-60	. SCREW, lens fitting	1		
4- 6	92501-06010 <i>275-84526-60-00</i>	. SCREW, pan head	2		
4- 7	92901-06100 <i>275-84525-60-00</i>	. WASHER, spring	2		
4- 8	275-84551-60-35 <i>93</i>	BRACKET, license	1		
4- 9	278-85111-00	REFLECTOR	2		
4-10	92901-05100	WASHER, spring	2		
4-11	98801-05100	NUT	2		
4-12	91203-06035	BOLT	1		
4-13	102-28323-00	WASHER, leg shield	1		
4-14	275-84557-00	COLLAR	1		
4-15	214-21717-00	DAMPER, battery box 1	1		
4-16	275-84559-00	DAMPER	1		
4-17	116-28324-00	WASHER, leg shield 2	1		
4-18	92901-06100	WASHER, spring	1		
4-19	92801-06100	NUT	1		
4-20	168-21738-00	BOLT	2		
4-21	92901-08200	WASHER, plain	2		
4-22	214-84553-01	DAMPER, license bracket	1		
4-23	92901-06100	WASHER, spring	2		

www.legends-yamaha-enduros.com

Fig. 4 TAIL LAMP

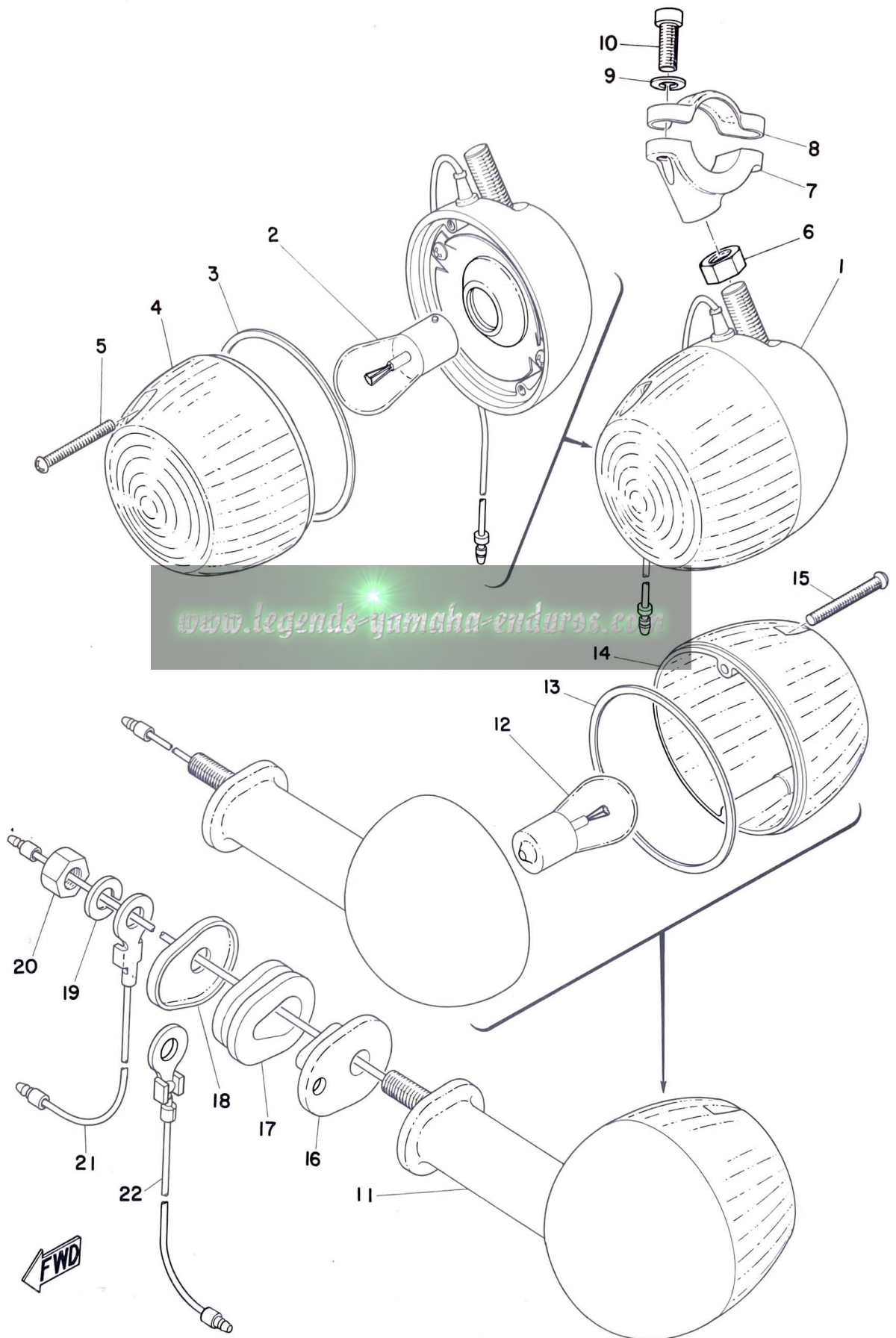


TAIL LAMP

Ref. No.	Part No.	Description	Q'ty	Applicable Machine No.	Remarks
4-24	92801-06200	NUT	2		
4-25	214-84517-00	CORD, tail lamp	1		
		<i>4-26-2 76-84527-60 damper ---</i>	<i>2</i>		



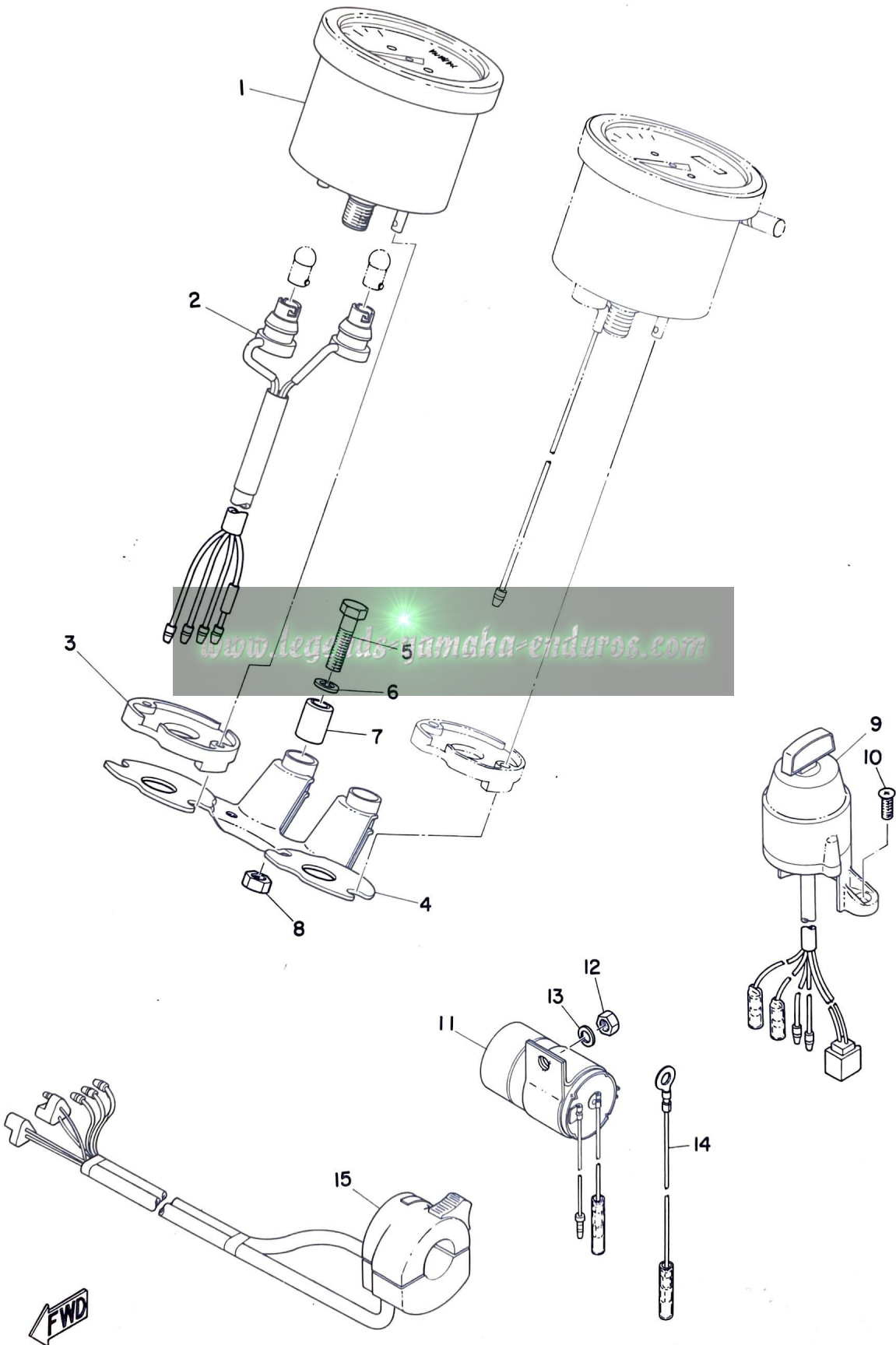
Fig. 5 FLASHER LAMP



FLASHER LAMP

Ref. No.	Part No.	Description	Q'ty	Applicable Machine No.	Remarks
5- 1	275-83310-60-93	FRONT FLASHER LAMP ASS'Y, left	1		Amber
	275-83320-60-93	FRONT FLASHER LAMP ASS'Y, right	1		Amber
5- 2	115-83311-60	. BULB, flasher (6V 21CP) 2		
5- 3	183-83313-70	. GASKET, flasher lens 2		
5- 4	183-83312-70	. LENS, flasher 2		Amber
5- 5	183-83333-71	. SCREW, lens fitting 4		
5- 6	98801-08100	NUT 2		
5- 7	275-83318-00	STAY, flasher 1 2		
5- 8	275-83328-00	STAY, flasher 2 2		
5- 9	92501-06100	WASHER, spring 4		
5-10	92503-06015	SCREW, pan head 4		
5-11	275-83330-65-93	REAR FLASHER LAMP ASS'Y, left	1		Red
	275-83340-65-93	REAR FLASHER LAMP ASS'Y, right	1		Red
5-12	115-83311-60	. BULB, flasher (6V 21CP) 2		
5-13	183-83313-70	. GASKET, flasher lens 2		
5-14	211-83332-75	. LENS, flasher 2		Red
5-15	183-83333-71	. SCREW, lens fitting 4		
5-16	256-83316-00	COLLAR, flasher 2		
5-17	256-83321-00	DAMPER, front flasher 2		
5-18	275-83359-00	WASHER, special 2		
5-19	92901-08100	WASHER, spring 2		
5-20	98801-08100	NUT 2		
5-21	275-83336-00	CORD 1		
5-22	275-83346-00	CORD 1		

Fig. 6 ELECTRICAL



ELECTRICAL

Ref. No.	Part No.	Description	Q'ty	Applicable Machine No.	Remarks
6- 1	275-83540-01	TACHOMETER ASS'Y	1		
6- 2	275-83520-00	. SOCKET ASS'Y	1		
6- 3	237-83523-00	DAMPER	1		
6- 4	275-83519-00	BRACKET, meter	1		
6- 5	91201-06030	BOLT	2		
6- 6	92901-06100	WASHER, spring	2		
6- 7	214-83528-00	BUSHING, meter	2		
6- 8	92801-06100	NUT	2		
6- 9	275-82510-70-00	MAIN SWITCH ASS'Y	1		
6-10	98203-05012	SCREW, flat head	2		
6-11	275-83350-60	FLASHER RELAY ASS'Y	1		
6-12	98801-06200	NUT	1		
6-13	92901-06100	WASHER, spring	1		
6-14	214-83354-00	WIRE, earth lead	1		
6-15	233-83973-00	SWITCH, handle 3	1		

www.legends-yamaha-enduros.com

RT1-MX

www.legends-yamaha-enduros.com

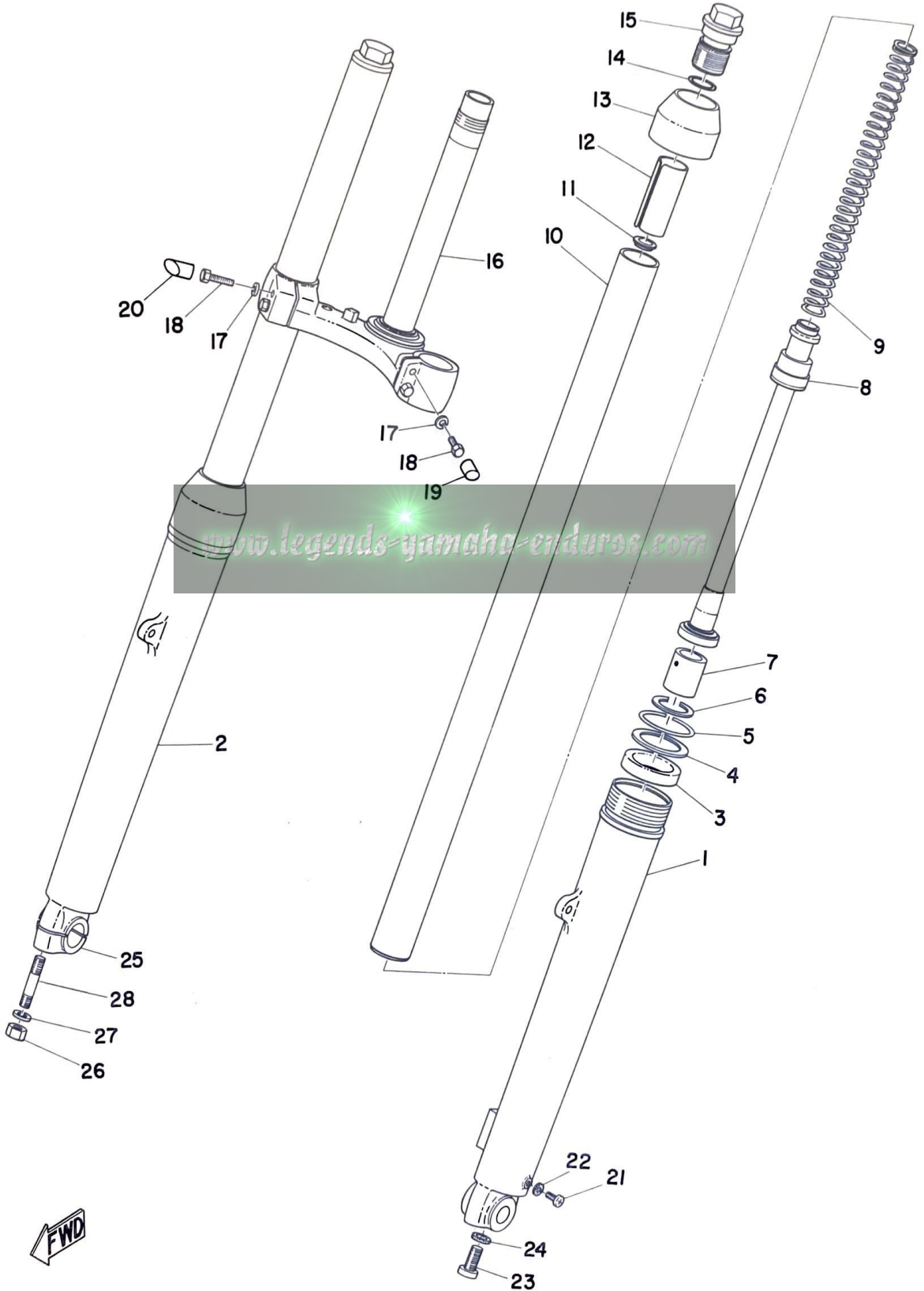


FRONT FORK

Ref. No.	Part No.	Description	Q'ty	Applicable Machine No.	Remarks
7- 0-1	292-23100-00	FRONT FORK ASS'Y	1		
7- 1	291-23126-60	. TUBE, outer left	1		
7- 2	291-23136-60	. TUBE, outer right	1		
7- 3	278-23145-50	. . OIL SEAL	2		
7- 4	214-23146-00	. . WASHER, oil seal	2		
7- 5	214-23156-00	. . CLIP, oil seal	2		
7- 6	93420-28025	. CIRCLIP	2		
7- 7	278-23171-50	. PISTON	2		
7- 8	291-23170-60	. CYLINDER COMP.	2		
7- 9	214-23141-00	. SPRING, fork	2		
7-10	291-23124-60	. TUBE, inner	2		
7-11	278-23142-50	. SEAT, spring upper	2		
7-12	291-23118-60	. SPACER	2		
7-13	292-23144-00	. SEAL, dust	2		
7-14	214-23114-00	. PACKING	2		
7-15	291-23111-60	. BOLT, cap	2		
7-16	275-23340-60	. UNDER BRACKET COMP.	1		
7-17	92901-08100	. WASHER, spring	4		
7-18	275-23346-60	. BOLT, under bracket	4		
7-19	263-21581-00	. STAY, plate fitting left	1		
7-20	263-21591-00	. STAY, plate fitting right	1		
7-21	122-23119-01	. PLUG, drain	2		
7-22	122-23129-00	. GASKET, drain plug	2		
7-23	278-23181-50	. BOLT	2		

www.legends-yamaha-enduros.com

Fig. 7 FRONT FORK



FRONT FORK

Ref. No.	Part No.	Description	Q'ty	Applicable Machine No.	Remarks
7-24	278-23158-50	. PACKING	2		
7-25	291-23167-60	. HOLDER, axle	1		
7-26	98801-08100	. NUT	2		
7-27	92901-08100	. WASHER, spring	2		
7-28	278-23128-50	. BOLT, axle holder	2		

www.legends-yamaha-enduros.com

NUMERICAL INDEX

Ref No.	Parts No.	Ref No.	Parts No.	Ref No.	Parts No.
4-13	102-28323-00	6- 3	237-83523-00	1-15	275-83984-00
5- 2	115-83311-60	3-15	256-23122-61	4- 0-1	275-84510-60
5-12	115-83311-60	5-16	256-83316-00	4- 1	275-84511-60
4-17	116-28324-00	5-17	256-83321-00	4- 4	275-84521-60
3-30	122-23119-01	3-16	256-85111-00	4- 2	275-84523-60
7-21	122-23119-01	7-19	263-21581-00	4- 5	275-84524-60
3-31	122-23129-00	7-20	263-21591-00	4- 8	275-84551-60-35
7-22	122-23129-00	1- 1	275-11311-01	4-14	275-84557-00
4- 3	122-84514-30	1-12	275-12278-00	4-16	275-84559-00
1-19	137-83944-00	1- 6	275-12279-00	2- 8	276-24748-00
4-20	168-21738-00	1- 8	275-12282-00	3-23	278-23115-50
5- 4	183-83312-70	1- 5	275-12283-00	3-20	278-23116-50
5- 3	183-83313-70	2- 1	275-21110-01-33	3-35	278-23128-50
5-13	183-83313-70	2- 2	275-21787-02	7-28	278-23128-50
5- 5	183-83333-71	3-26	275-23340-60	3-11	278-23142-50
5-15	183-83333-71	7-16	275-23340-60	7-11	278-23142-50
5-14	211-83332-75	3-27	275-23346-60	3-13	278-23144-50
2- 3	214-21705-00-05	7-18	275-23346-60	3- 3	278-23145-50
4-15	214-21717-00	3-38	275-23435-01	7- 3	278-23145-50
3-24	214-23114-00	2- 6	275-24710-00	3-14	278-23148-50
7-14	214-23114-00	2-11	275-25121-00	3-33	278-23158-50
3- 9	214-23141-00	1-13	275-26331-00	7-24	278-23158-50
7- 9	214-23141-00	6- 9	275-82510-70	3- 7	278-23171-50
3- 4	214-23146-00	5- 1	275-83310-60-93	7- 7	278-23171-50
7- 4	214-23146-00	5- 7	275-83318-00	3-32	278-23181-50
3- 5	214-23156-00	5- 1	275-83320-60-93	7-23	278-23181-50
7- 5	214-23156-00	5- 8	275-83328-00	2- 7	278-24768-00
3-19	214-23163-00	5-11	275-83330-65-93	4- 9	278-85111-00
3-29	214-23318-00	5-21	275-83336-00	1-24	291-14610-30
3-39	214-23451-10	5-11	275-83340-65-93	1-25	291-14752-30
3-44	214-23490-00	5-22	275-83346-00	2- 4	291-22210-70
3-42	214-23492-00	6-11	275-83350-60	3- 0-1	291-23100-60-33
2- 5	214-24110-03-06	5-18	275-83359-00	3-25	291-23111-60
6-14	214-83354-00	6- 4	275-83519-00	7-15	291-23111-60
6- 7	214-83528-00	6- 2	275-83520-00	3-12	291-23118-60
4-25	214-84517-00	6- 1	275-83540-01	7-12	291-23118-60
4-22	214-84553-01	1-14	275-83981-00	3-21	291-23121-60-33
6-15	233-83973-00	1-18	275-83943-00	3-10	291-23124-60

NUMERICAL INDEX

Ref No.	Parts No.	Ref No.	Parts No.	Ref No.	Parts No.
7-10	291-23124-60	4-18	92901-06100		
3- 1	291-23126-60	4-23	92901-06100		
7- 1	291-23126-60	6- 6	92901-06100		
3-22	291-23131-60-33	6-13	92901-06100		
3- 2	291-23136-60	1-20	92901-06200		
7- 2	291-23136-60	3-28	92901-08100		
3-34	291-23167-60	3-36	92901-08100		
7-25	291-23167-60	5-19	92901-08100		
3- 8	291-23170-60	7-27	92901-08100		
7- 8	291-23170-60	7-17	92901-08100		
7- 0-1	292-23100-00	4-21	92901-08200		
7-13	292-23144-00	3-41	92901-10100		
1- 4	812-11198-00	1- 3	93210-04092		
1- 7	812-12273-00	3- 6	93420-28025		
1- 2	812-12281-00	7- 6	93420-28025		
1-10	812-12284-00	6-10	98203-05012		
1- 9	812-12287-00	3-18	98801-05100		
1-21	91201-06015	4-11	98801-05100		
6- 5	91201-06030	6-12	98801-06200		
2-10	91202-06012	3-37	98801-08100		
1-16	91203-06030	5- 6	98801-08100		
1-17	91203-06035	5-20	98801-08100		
4-12	91203-06035	7-26	98801-08100		
3-40	91204-10030				
1-11	91402-16005				
4- 6	92501-06010				
5- 9	92501-06100				
5-10	92503-06015				
1-23	92801-06100				
4-19	92801-06100				
6- 8	92801-06100				
4-24	92801-06200				
3-17	92901-05100				
4-10	92901-05100				
1-22	92901-06100				
2- 9	92901-06100				
3-43	92901-06100				
4- 7	92901-06100				

www.legends-yamaha-enduros.com



YAMAHA MOTOR CO., LTD.

PRINTED IN JAPAN
First edition, Aug., 1970