



**YAMAHA**

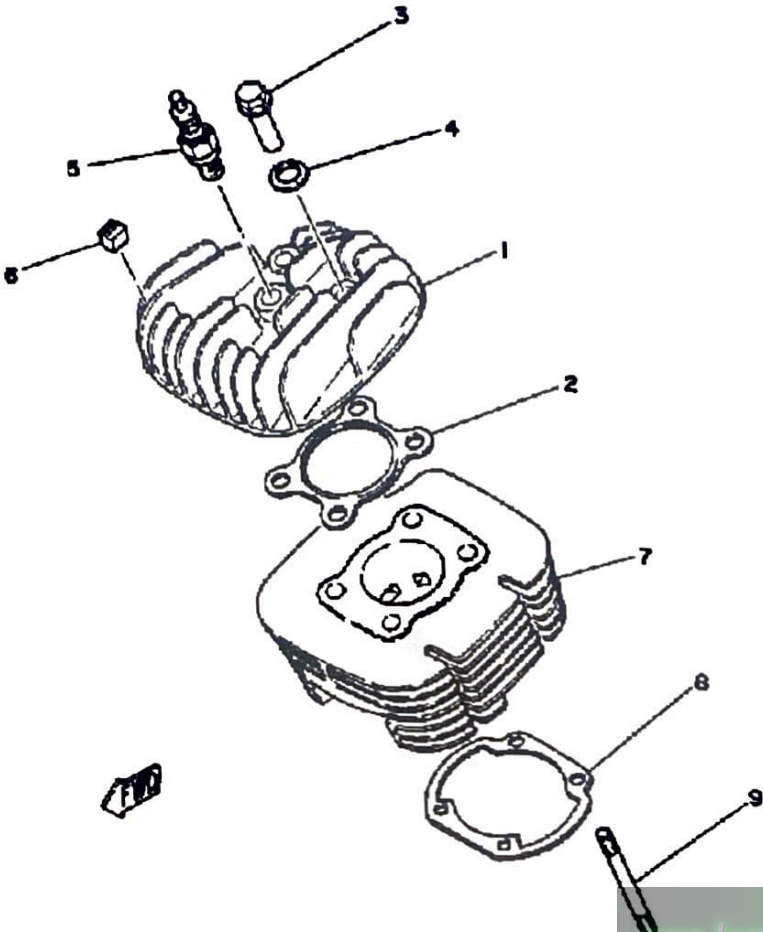
**GENUINE**

**PARTS CATALOGUE**

**MOTORCYCLE**

[www.legends-yamaha-enduros.com](http://www.legends-yamaha-enduros.com)

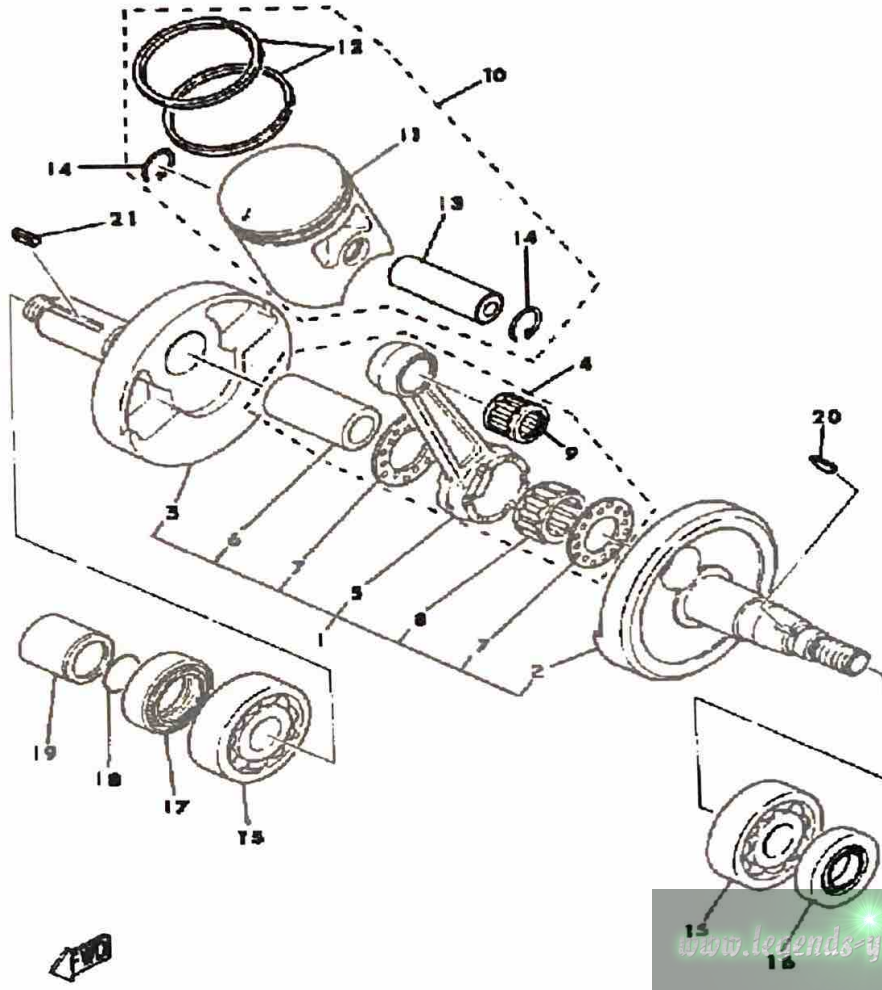
# CYLINDER HEAD - CYLINDER



Ref. No.	Part Number	Description	Qty	Remarks
1	(3A3-11111-00-00)	HEAD, CYLINDER 1 .....	1	
2	276-11181-01-00	GASKET, CYLINDER HEAD 1 .	1	
3	90179-08303-00	NUT .....	4	
4	90201-12362-00	WASHER, PLATE .....	4	
5	NGK-B7ES0-00-00	NGK B7ES 10PK (94701-00044)	1	
6	521-11161-01-00	ABSORBER 1 .....	10	
7	3A3-11311-00-00	CYLINDER 1 .....	1	
8	3UL-11351-00-00	GASKET, CYLINDER .....	1	
9	90116-08065-00	BOLT, STUD .....	4	

[www.legends-yamaha-enduros.com](http://www.legends-yamaha-enduros.com)

# CRANKSHAFT - PISTON



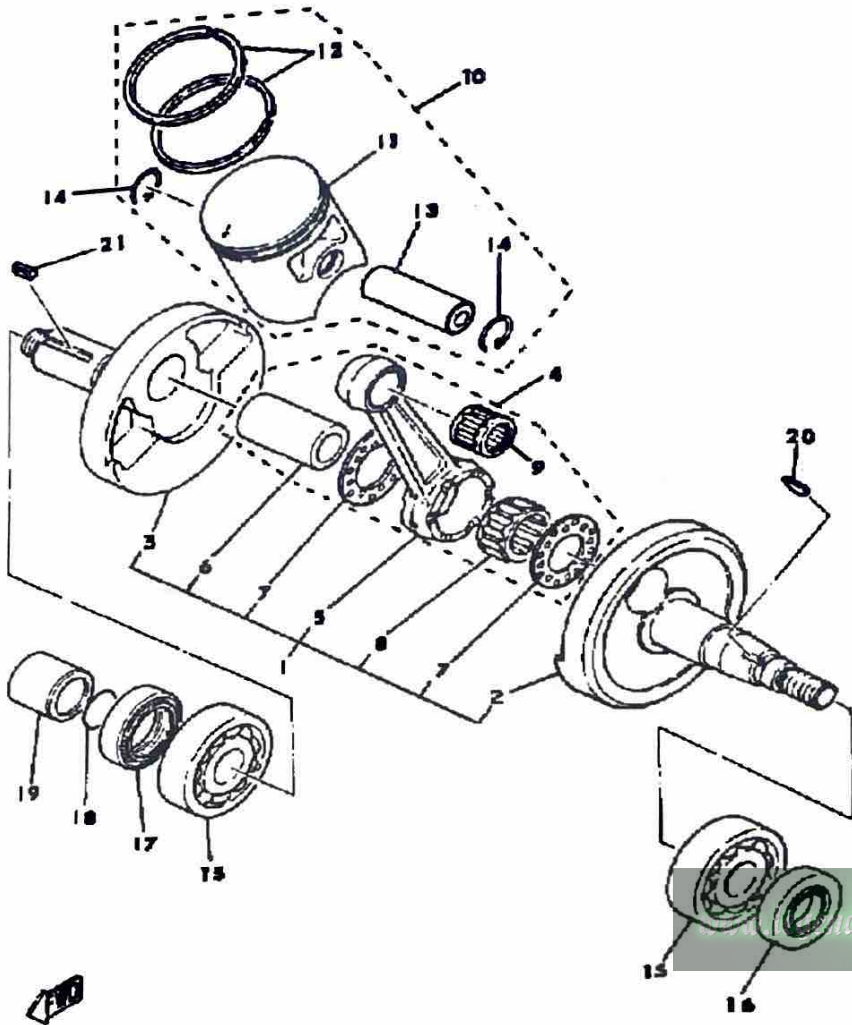
Ref. No.	Part Number	Description	Qty	Remarks
1	558-11400-00-00	CRANKSHAFT ASSEMBLY	1	
2	558-11412-00-00	. CRANK 1	1	
3	(558-11422-00-00)	CRANK 2	1	
4	1M7-11650-00-00	. CONNECTING ROD ASSEMBLY (558-11650-01)	1	
5	1M7-11651-00-00	.. ROD, CONNECTING	1	
6	5E2-11681-00-00	.. PIN, CRANK 1	1	
7	90209-22248-00	.. WASHER	2	
8	93310-422E7-00	.. BEARING	1	
9	93310-21403-00	.. BEARING	1	
10	(3A3-11630-00-00)	PISTON KIT STD	1	
	(3A3-11630-10-00)	PISTON KIT 1ST	1	ALT. PART
	(3A3-11630-20-00)	PISTON KIT 2ND	1	ALT. PART
	(3A3-11630-30-00)	PISTON KIT 3RD	1	ALT. PART
	(3A3-11630-40-00)	PISTON KIT 4TH	1	ALT. PART
11	(3A3-11635-00-00)	PISTON 1 O/S 0.5	1	ALT. PART
	(3A3-11636-00-00)	PISTON 2 O/S 0.0	1	ALT. PART
	(3A3-11637-00-00)	PISTON 3 O/S 0.5	1	ALT. PART
	(3A3-11638-00-00)	PISTON 4 O/S 1.0	1	ALT. PART
	3A3-11631-00-96	. PISTON STD	1	
12	3A3-11610-00-00	. PISTON RING SET (STD)	1	
	3A3-11610-10-00	. PISTON RING SET (0.25MM O/S)	1	ALT. PART
	3A3-11610-20-00	. PISTON RING SET (0.50MM O/S)	1	ALT. PART
	3A3-11610-30-00	. PISTON RING SET (0.75MM O/S)	1	
	3A3-11610-40-00	. PISTON RING SET (1.00MM O/S)	1	ALT. PART
13	131-11633-00-00	. PIN, PISTON	1	

CONTINUED ON NEXT FRAME ►

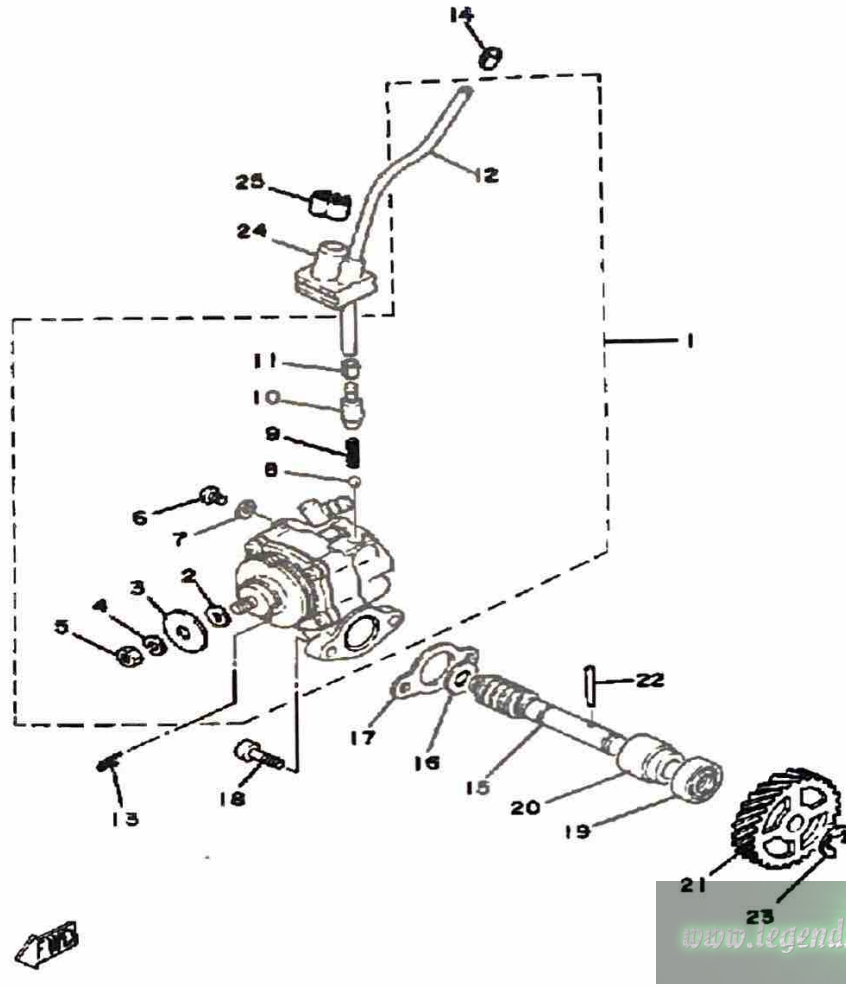
# CRANKSHAFT - PISTON

Ref. No.	Part Number	Description	Qty	Remarks
----------	-------------	-------------	-----	---------

14	93450-15023-00	. CIRCLIP .....	2	
15	93306-30421-00	BEARING (B6304C3) .....	2	
16	93102-20447-00	OIL SEAL .....	1	
17	93103-28011-00	OIL SEAL .....	1	
18	93210-180A6-00	O-RING .....	1	
19	90387-20175-00	COLLAR .....	1	
20	90280-03017-00	KEY, WOODRUFF .....	1	
21	90282-05005-00	KEY, STRAIGHT .....	1	

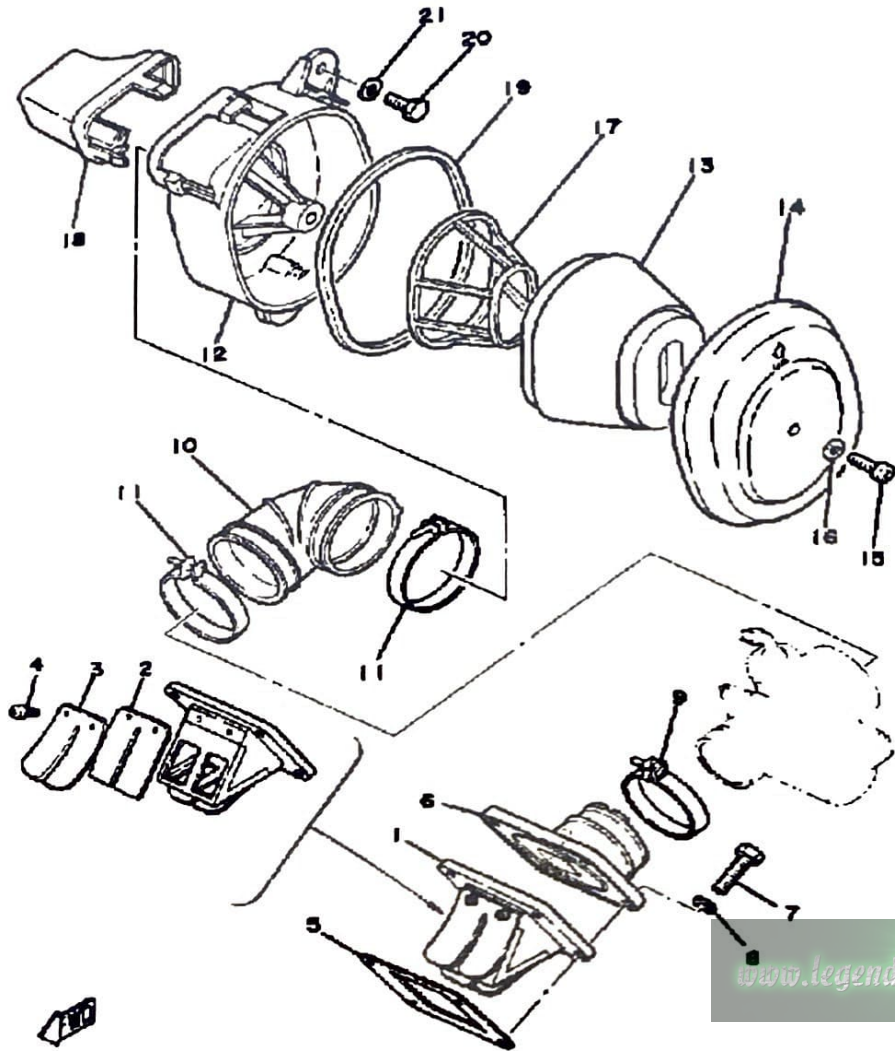


# OIL PUMP



Ref. No.	Part Number	Description	Qty	Remarks
1	558-13101-01-00	OIL PUMP ASSEMBLY	1	
2	137-13137-00-03	. SHIM (0.3T)	1	U.N.
	137-13137-00-05	. SHIM (0.5T)	1	U.N.
	137-13137-00-10	. SHIM (1.0T)	1	U.N.
3	137-13138-01-00	. PLATE, ADJUSTING	1	
4	92990-05100-00	. WASHER, SPRING	1	
5	95380-05600-00	. NUT	1	
6	98901-04008-00	. SCREW, BIND	1	
7	90430-04004-00	. GASKET	1	
8	93505-32002-00	. BALL	1	
9	90501-02018-00	. SPRING, COMPRESSION	1	
10	402-13552-00-00	. NOZZLE	1	
11	90468-02033-00	. CLIP	1	
12	90445-05278-00	. HOSE	1	
13	367-13146-01-00	CLIP	1	
14	90468-02033-00	CLIP	1	
15	275-13175-01-00	SHAFT, WORM	1	
16	90201-08624-00	WASHER, PLATE	1	
17	3MT-13116-00-00	GASKET, PUMP CASE (8Y0-13116-00)	1	
18	98580-05016-00	SCREW, PAN HEAD	2	
19	93101-10002-00	OIL SEAL	1	
20	1E7-13176-00-00	METAL, WRM SHAF OTR	1	
21	248-13178-00-00	GEAR, DRIVE (28T)	1	
22	93603-22028-00	PIN, DOWEL	1	
23	99001-08600-00	CIRCLIP	1	
24	525-13174-00-00	HOLDER, OIL PIPE	1	
25	90468-15020-00	CLIP	1	

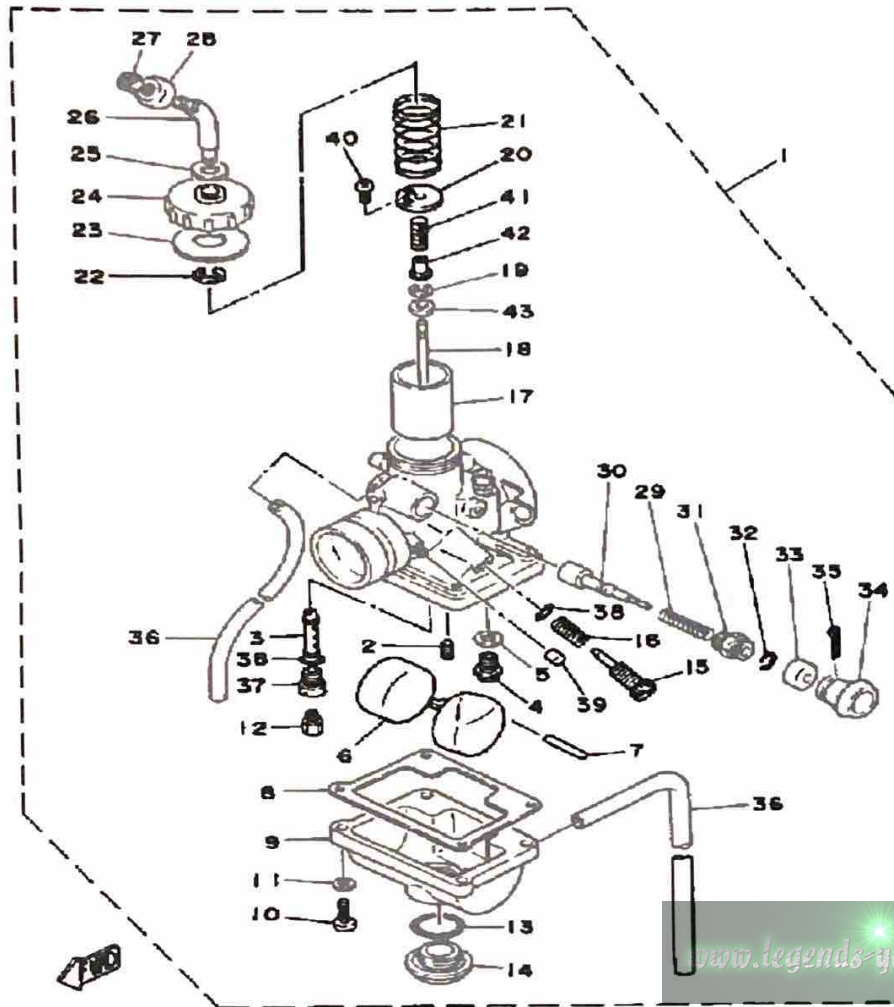
# INTAKE



Ref. No.	Part Number	Description	Qty	Remarks
1	314-13610-01-00	REED VALVE ASSEMBLY	1	
2	314-13613-01-00	. REED, VALVE	2	
3	314-13616-01-00	. STOPPER, REED VALVE	2	
4	98580-03008-00	. SCREW, PAN HEAD	4	
5	87A-13621-00-00	GASKET, VALVE SEAT	1	
6	560-13565-00-00	JOINT, CARBURETOR	1	
7	97011-06025-00	BOLT (97001-06025)	4	
8	90201-061A5-00	WASHER, PLATE	4	
9	90460-43053-00	CLAMP, HOSE	1	
10	3A3-14453-01-00	JOINT, AIR CLEANER 1	1	
11	90460-51059-00	CLAMP, HOSE	2	
12	1T9-14411-00-00	CASE, AIR CLEANER 1	1	
13	1T9-14450-00-00	ELEMENT ASSEMBLY, AIR CLEANER	1	
14	1T9-14412-00-00	CAP, CLEANER CASE 1	1	
15	98580-06018-00	SCREW, PAN HEAD	1	
16	90201-061A5-00	WASHER, PLATE	1	
17	1T9-14458-00-00	GUIDE	1	
18	1T9-14437-00-00	DUCT	1	
19	3V6-14416-00-00	GASKET, AIR CLEANER	1	
20	97313-06016-00	BOLT, HEXAGON	1	
21	90201-06067-00	WASHER, PLATE	1	

www.legends-yamaha-enduros.com

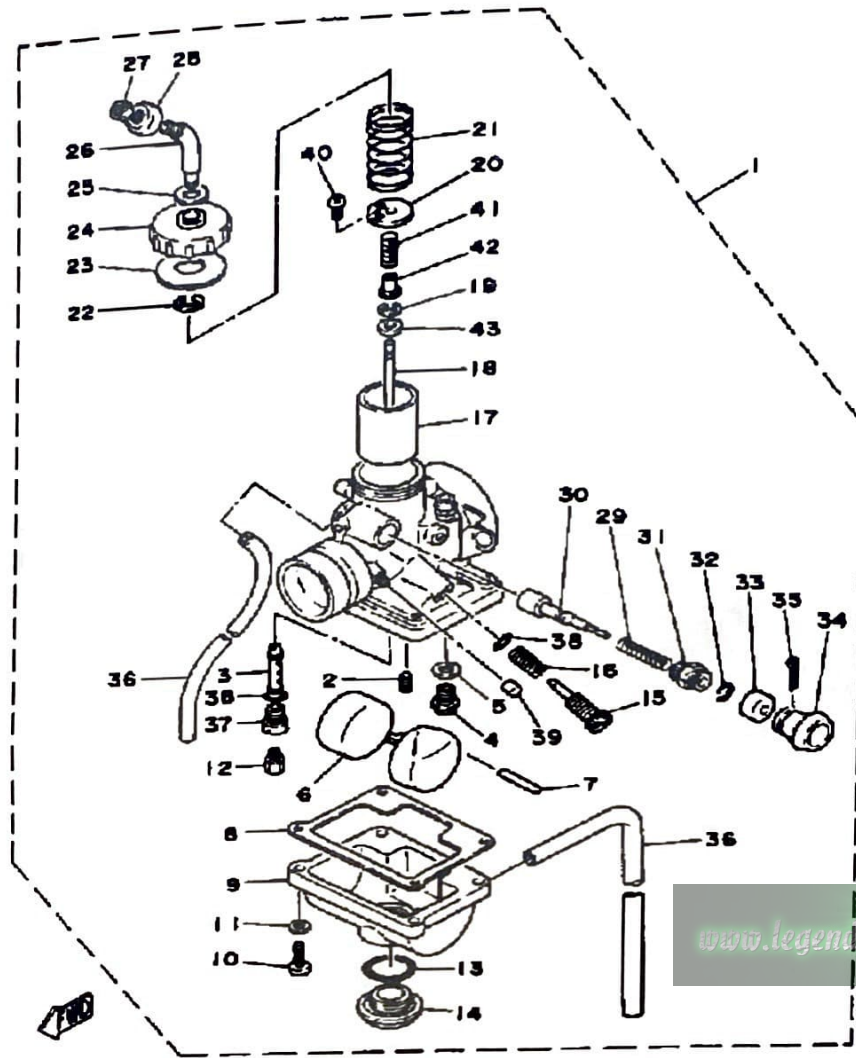
# CARBURETOR



Ref. No.	Part Number	Description	Qty	Remarks
1	3A3-14101-60-00	CARBURETOR ASSEMBLY 1	1	
2	260-14142-15-A0	. JET, PILOT # 5	1	
3	2F5-14141-36-00	. NOZZLE, MAIN	1	
4	353-14190-15-00	. NEEDLE VALVE ASSEMBLY	1	
5	127-14195-00-00	. WASHER, NEEDLE VALVE	1	
6	304-14185-00-00	. FLOAT	1	
7	127-14186-00-00	. PIN, FLOAT	1	
8	304-14184-00-00	. GASKET, FLOAT CHAMBER	1	
9	539-14181-04-00	. BODY, FLOAT CHMBR 1	1	
10	98503-04014-00	. SCREW, PAN HEAD	4	
11	92901-04100-00	. WASHER, SPRING	4	
12	137-14143-26-A0	. JET, MAIN (#130)	1	
13	558-14147-00-00	. O-RING	1	
14	500-14115-00-00	. PLUG, SCREW	1	
15	493-14122-00-00	. SCREW, THROTTLE (443-14122-00)	1	
16	493-14133-00-00	. SPRING, THRTL STOP	1	
17	(3A3-14112-20-00)	VALVE, THROTTLE 1	1	
18	(164-14116-17-00)	NEEDLE	1	
19	164-14137-00-00	. CLIP	1	
20	(3A3-14136-00-00)	SEAT, SPRING	1	
21	3X3-14131-00-00	. SPRING, THRTL VALVE	1	
22	363-14137-00-00	. CLIP	1	
23	3A3-14126-00-00	. GASKET	1	
24	1T9-14158-00-00	. TOP, MIXING CHAMBER	1	
25	509-14198-00-00	. GASKET	1	
26	(3A3-14155-00-00)	GUIDE, CABLE	1	
27	127-14161-00-00	. NUT, CABLE ADJUSTING	1	
28	1M1-14169-00-00	. CAP	1	

CONTINUED ON NEXT FRAME ►

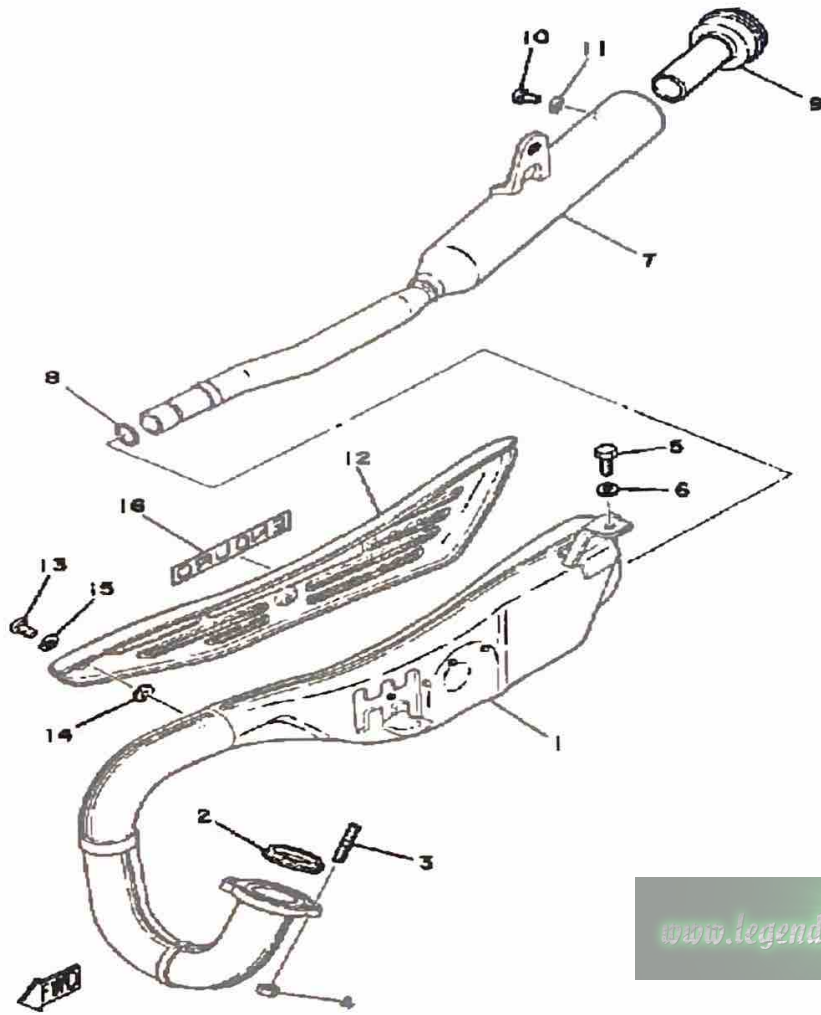
# CARBURETOR



Ref. No.	Part Number	Description	Qty	Remarks
29	156-14135-00-00	. SPRING, PLUNGER .....	1	
30	304-14171-00-00	. PLUNGER, STARTER .....	1	
31	152-14174-00-00	. CAP, PLUNGER .....	1	
32	152-14138-00-00	. CLIP, PLUNGER .....	1	
33	3A3-14173-00-00	. COVER, PLUNGER CAP ....	1	
34	304-14261-00-00	. HOLDER .....	1	
35	91490-16020-00	. PIN, COTTER .....	1	
36	23F-14197-00-00	. PIPE, AIRVENT .....	2	
37	2N4-14145-00-00	. HOLDER .....	1	
38	214-14147-00-00	. O-RING .....	2	
39	895-14169-00-00	. CAP .....	1	
40	98503-04005-00	. SCREW, PAN HEAD .....	1	
41	2N6-14589-01-00	. SPRING .....	1	
42	2N6-14227-01-00	. WASHER .....	1	
43	2N6-14918-01-00	. RING .....	1	



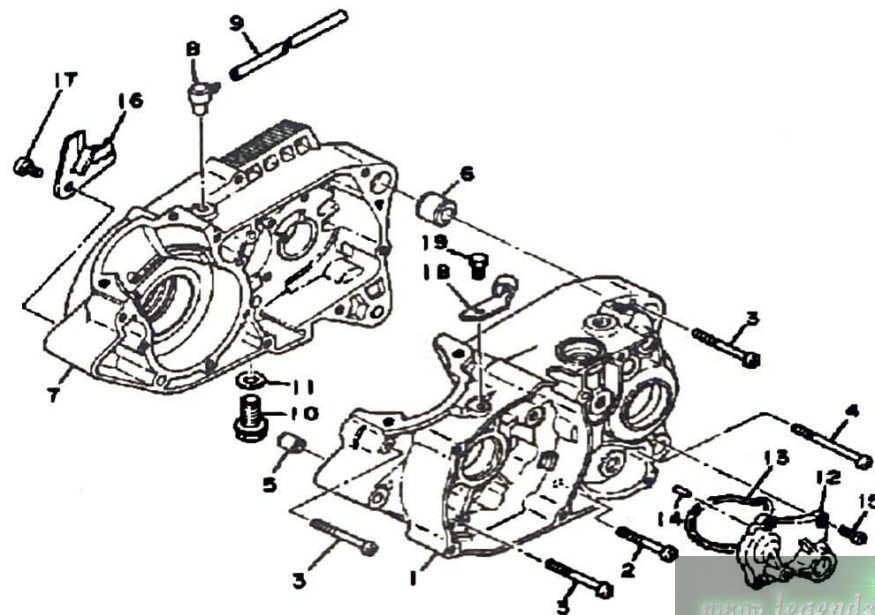
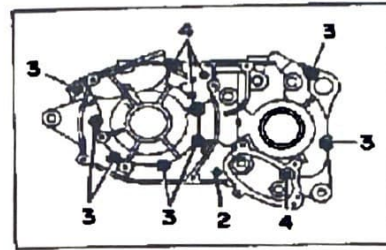
# EXHAUST



Ref. No.	Part Number	Description	Qty	Remarks
1	3UL-14610-00-00	EXHAUST PIPE ASSEMBLY ..	1	
2	152-14613-00-00	GASKET, EXST PIPE .....	1	
3	90116-06016-00	BOLT, STUD .....	2	
4	95380-06600-00	NUT .....	2	
5	97313-08018-00	BOLT, HEXAGON (97301-08016)	1	
6	92990-08200-00	WASHER, PLAIN .....	1	
7	1T9-14753-00-00	SILENCER, EXHAUST .....	1	
8	93210-16290-00	O-RING .....	1	
9	438-14752-00-00	PIPE, OUTLET .....	1	
10	98580-06010-00	SCREW, PAN HEAD (92503-06010) .....	1	
11	92995-06100-00	WASHER, SPRING .....	1	
12	(1T9-14718-00-20)	PROTECTOR, MUFF 1 .....	1	CRYSTAL SILR
	(1T9-14718-00-26)	PROTECTOR, MUFF 1 .....	1	COMP. YEL
	1T9-14718-00-36	PROTECTOR, MUFF 1 .....	1	STAR SILV
13	98903-06010-00	SCREW, BIND .....	3	
14	90202-05187-00	WASHER, PLATE .....	3	
15	90202-05005-00	WASHER, PLATE (218-14766-10) .....	3	
16	2F5-14729-01-00	EMBLEM, PROTECTOR .....	1	

[www.legends-yamaha-enduros.com](http://www.legends-yamaha-enduros.com)

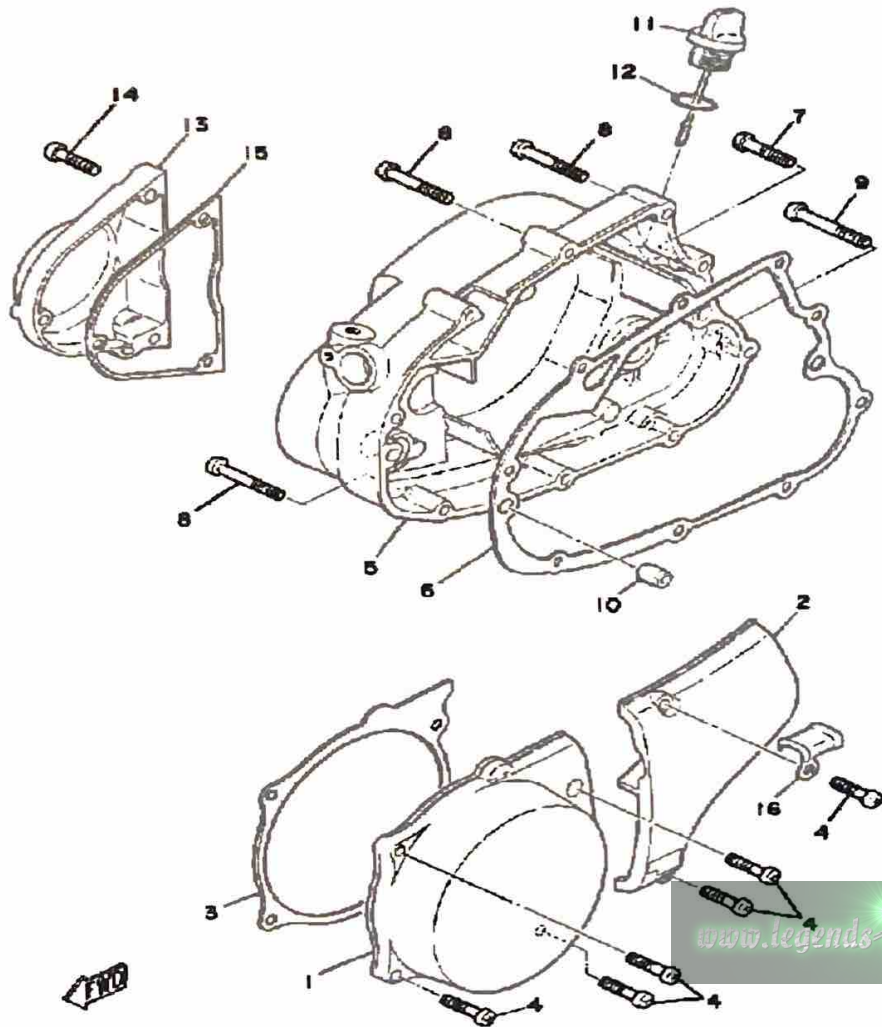
# CRANKCASE



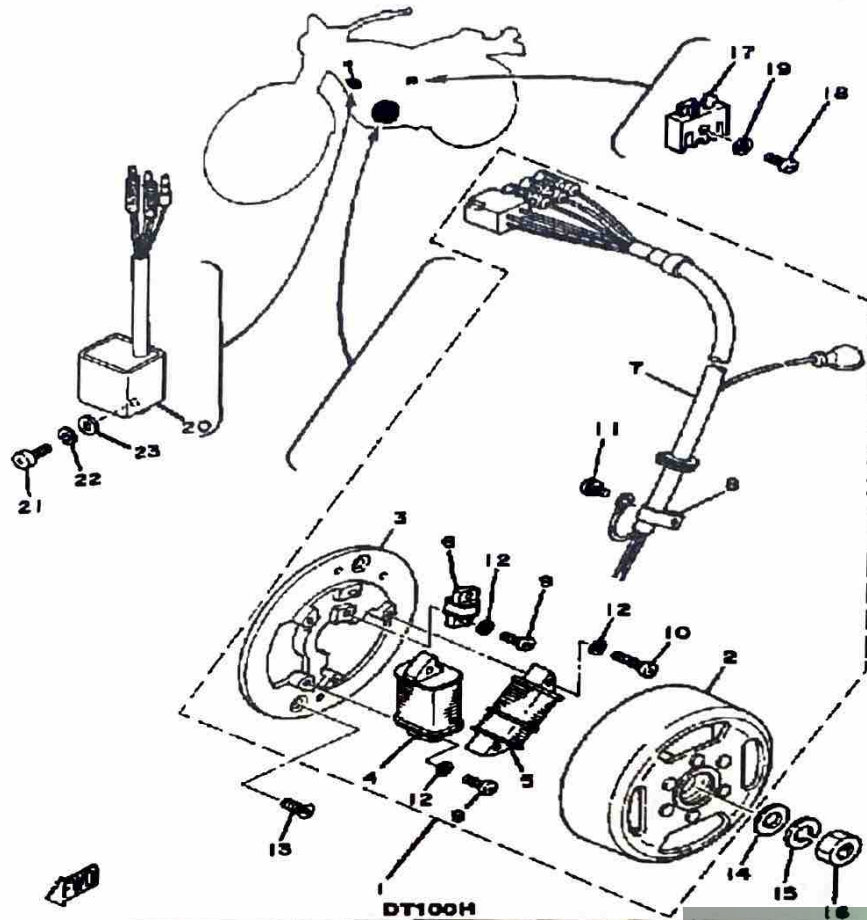
Ref. No.	Part Number	Description	Qty	Remarks
1	1T9-15111-00-00	CRANKCASE 1 .....	1	
2	98580-06040-00	SCREW, pan head (92501-06040-00) .....	1	
3	98580-06550-00	SCREW PAN HEAD (92503-06050) .....	7	
4	92580-06560-00	SCREW PAN HEAD .....	4	
5	99530-10014-00	PIN, DOWEL .....	1	
6	99530-14016-00	PIN, DOWEL .....	1	
7	1T9-15121-01-00	CRANKCASE 2 .....	1	
8	583-15371-00-00	BREATHER .....	1	
9	90445-07176-00	HOSE .....	1	
10	90340-12005-00	PLUG, DRAIN .....	1	
11	90430-12207-00	GASKET .....	1	
12	437-15419-01-00	COVER, SHIFTER 1 .....	1	
13	401-15449-00-00	RING, RUBBER .....	1	
14	93603-12007-00	PIN, DOWEL .....	2	
15	98503-06014-00	SCREW, PAN HEAD (92502-06016) .....	4	
16	304-15128-00-00	HOLDER .....	1	
17	92501-08010-00	SCREW, PAN HEAD .....	1	
18	401-15441-02-00	HOLDER, CLUTCH CABLE ...	1	
19	97013-06012-00	BOLT .....	1	

# CRANKCASE COVER

Ref. No.	Part Number	Description	Qty	Remarks
1	1X0-15411-00-00	COVER, CRANKCASE L	1	
2	401-15421-00-00	COVER, CRANKCASE R	1	
3	1X0-15455-00-00	GASKET 1	1	
4	98580-06020-00	SCREW	6	
5	401-15431-00-00	COVER, CRANKCASE 3	1	
6	401-15451-00-00	GASKET, CRCS COVERCRANKCASE COVER 1	1	
7	98580-06030-00	SCREW PAN HEAD	3	
8	98580-06040-00	SCREW, pan head (92501-06040-00)	5	
9	98580-06545-00	SCREW PAN HEAD (92503-06045)		
10	99530-10014-00	PIN, DOWEL	2	
11	18G-15362-00-00	PLUG, OIL LEVEL	1	
12	93210-21190-00	O-RING	1	
13	1X0-15416-00-00	COVER, OIL PUMP	1	
14	98511-06025-00	SCREW PAN HEAD (92501-06025)	3	
15	3UL-15456-00-00	GASKET, OIL PUMP COVER 1	1	
16	90461-10016-00	CLAMP	1	



# C - D - I - MAGNETO DT100H - J

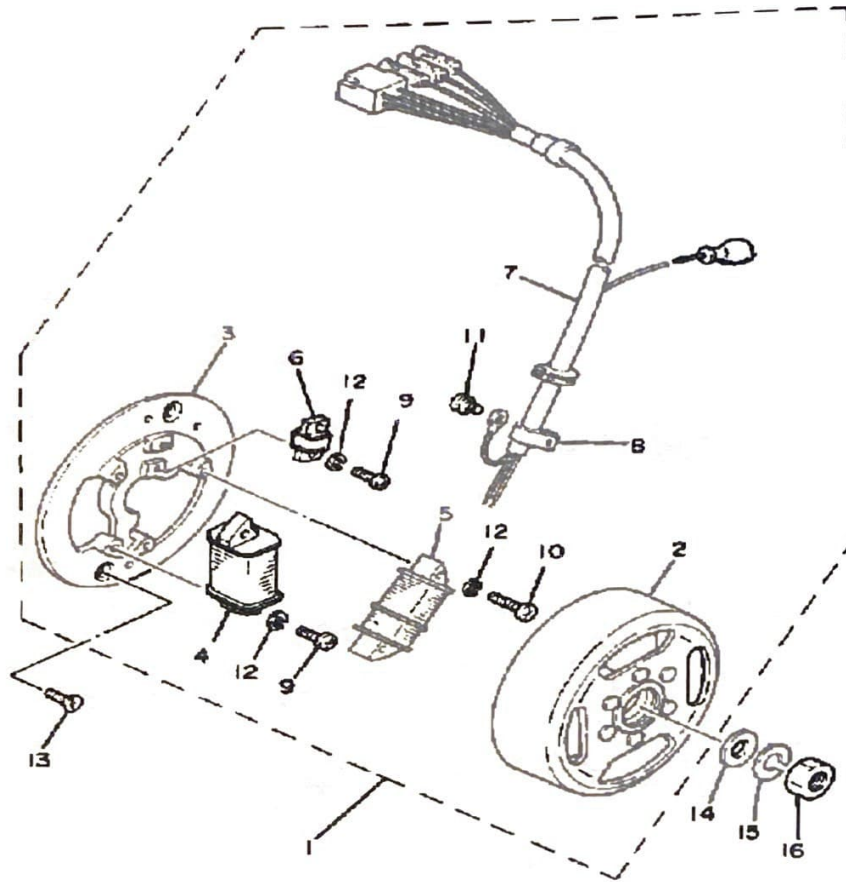


Ref. No.	Part Number	Description	Qty	Remarks
1	(3A3-85500-20-00)	CDI MAGNETO ASSEMBLY ...	1	
2	3A3-85550-20-00	. ROTOR ASSEMBLY .....	1	
3	(3A3-85509-20-00)	BASE, MAGNETO .....	1	
4	3A3-85512-20-00	. COIL SOURCE 2 .....	1	
5	3A3-85513-20-00	. COIL, LIGHTING 1 .....	1	
6	3A3-85580-20-00	. COIL, PULSER .....	1	
7	(3A3-85515-20-00)	LEAD WIRE ASSEMBLY .....	1	
8	104-81328-20-00	. CLAMP .....	1	
9	98503-04014-00	. SCREW, PAN HEAD .....	3	
10	98511-04025-00	. SCREW, PAN HEAD .....	2	
11	97601-04106-00	. SCREW, PN/HD.W/WSHR ...	1	
12	92901-04100-00	WASHER, SPRING .....	5	
13	98603-06012-00	SCREW, OVAL HEAD (92701-06012) .....	2	
14	90201-12535-00	WASHER, PLATE .....	1	
15	92901-12100-00	WASHER, SPRING .....	1	
16	90170-12175-00	NUT .....	1	
17	353-81970-63-00	RECTIFIER ASSEMBLY .....	1	
18	98501-05018-00	SCREW, PAN HEAD .....	1	
19	92990-05100-00	WASHER, SPRING .....	1	
20	3A3-85540-20-00	CDI UNIT ASSEMBLY .....	1	
21	98503-06014-00	SCREW, PAN HEAD (92502-06016) .....	1	
22	92995-06100-00	WASHER, SPRING .....	1	
23	90201-061A5-00	WASHER, PLATE .....	1	

DT100H	
<b>CHARGING SYSTEM</b>	Flywheel Magneto / Single Phase / Half Wave
Battery: Model / Specific Gravity / Charge Rate	GS 8N4-2A-2 / 1.26 / 0.4A
Maximum Output	7.5V 3.5A @ 6000 rpm
<b>TROUBLESHOOTING</b>	
Field Coil Color Code / Ω	⊕
Charge Coil Color Code / Ω	Grn-Red ~ 5Ω / 0.32 Ω ± 10%
<b>IGNITION SYSTEM</b>	Capacitor-Discharge Ignition
Ignition Timing	21° BTDC @ 2000 rpm 1.5mm BTDC

DT100J	
<b>CHARGING SYSTEM</b>	Flywheel Magneto / Single Phase / Half Wave
Battery: Model / Specific Gravity / Charge Rate	GS 8N4-2A-2 / 1.26 / 0.4A
Maximum Output	7.5V 3.5A @ 6000 rpm
<b>TROUBLESHOOTING</b>	
Field Coil Color Code / Ω	⊕
Charge Coil Color Code / Ω	Grn-Red ~ 5Ω / 0.32 Ω ± 10%

# C - D - I - MAGNETO DT100K

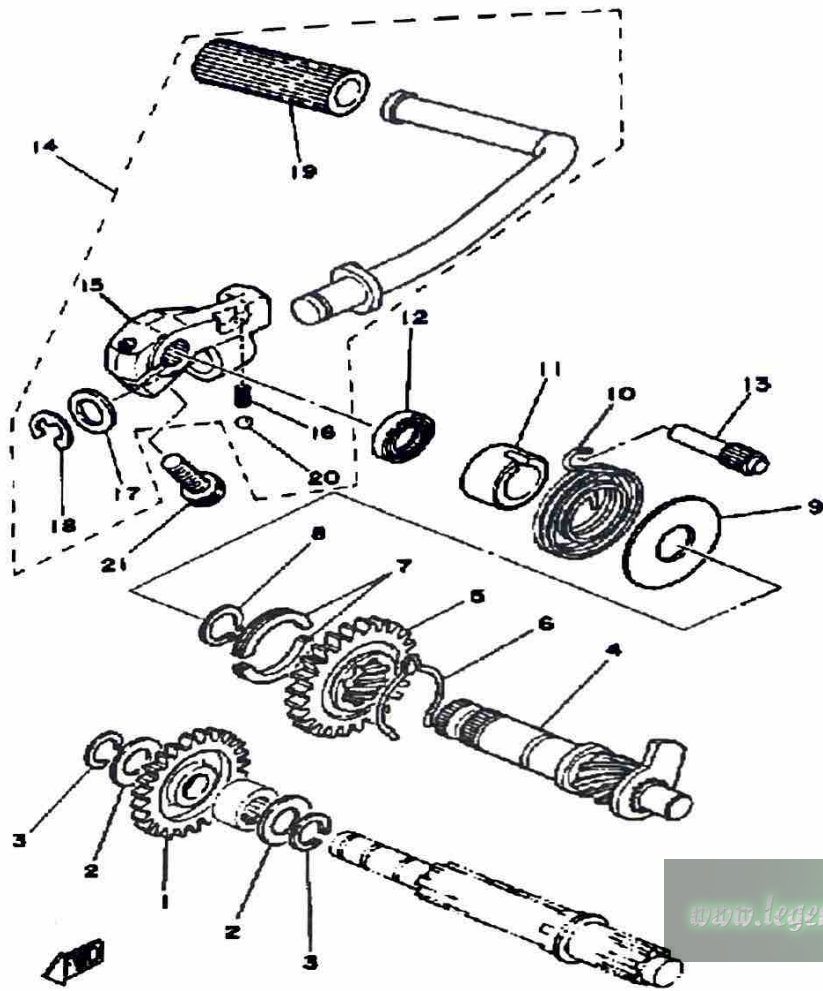


Ref. No.	Part Number	Description	Qty	Remarks
1	(3A3-85500-20-00)	CDI MAGNETO ASSEMBLY	1	
2	3A3-85550-20-00	. ROTOR ASSEMBLY	1	
3	(3A3-85509-20-00)	BASE, MAGNETO	1	
4	3A3-85512-20-00	. COIL SOURCE 2	1	
5	3A3-85513-20-00	. COIL, LIGHTING 1	1	
6	3A3-85580-20-00	. COIL, PULSER	1	
7	(3A3-85515-20-00)	LEAD WIRE ASSEMBLY	1	
8	104-81328-20-00	. CLAMP	1	
9	98503-04014-00	. SCREW, PAN HEAD	3	
10	98511-04025-00	. SCREW, PAN HEAD	2	
11	97601-04106-00	. SCREW, PN/HD.W/WSHR	1	
12	92901-04100-00	. WASHER, SPRING	5	
13	98603-06012-00	SCREW, OVAL HEAD (92701-06012)	2	
14	90201-12535-00	WASHER, PLATE	1	
15	92901-12100-00	WASHER, SPRING	1	
16	90170-12175-00	NUT	1	

**FWD**  
3A3110-2030

[www.legends-yamaha-enduros.com](http://www.legends-yamaha-enduros.com)

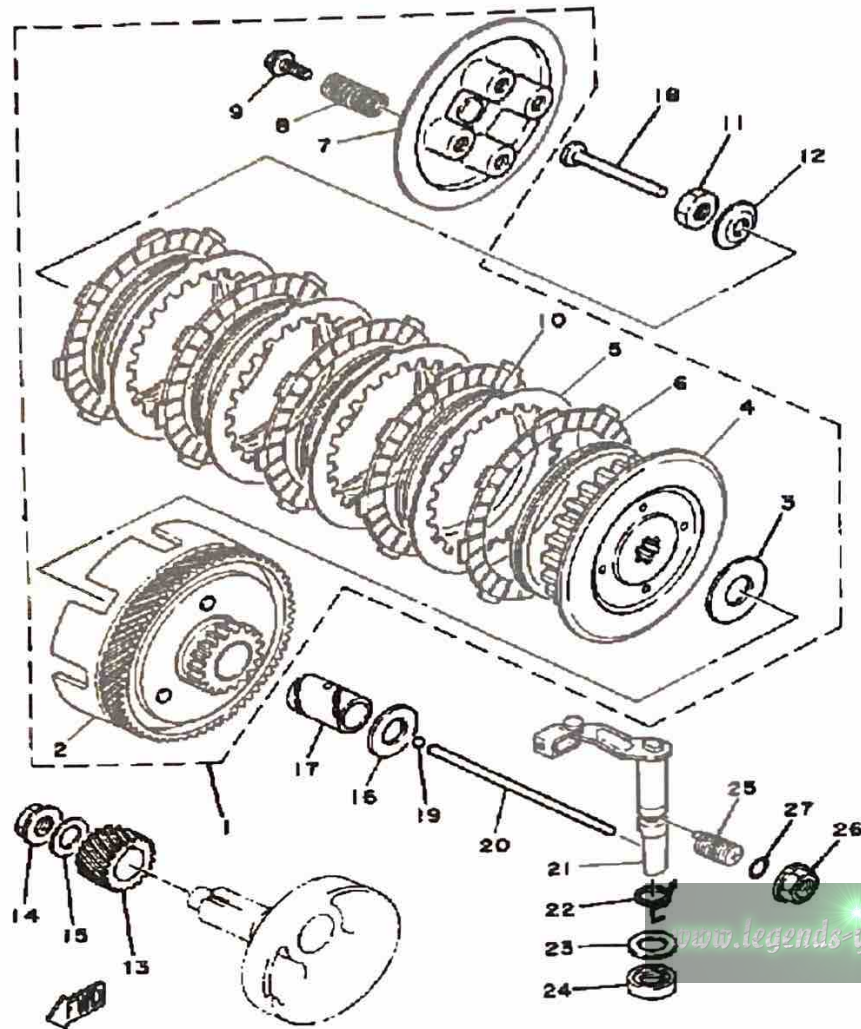
# STARTER



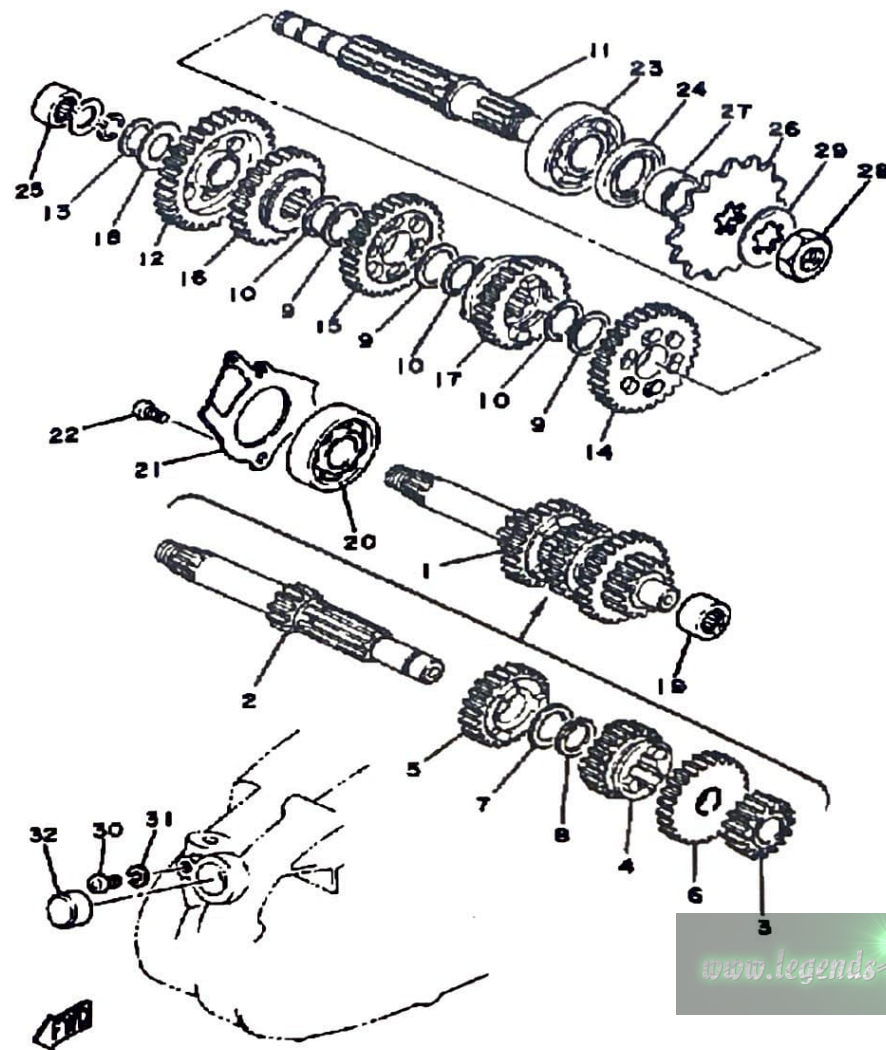
Ref. No.	Part Number	Description	Qty	Remarks
1	525-15651-00-00	GEAR, KICK IDLE (25T) .....	1	
2	137-17417-00-05	SHIM 1 (0.5T) .....	2	
3	93440-15012-00	CIRCLIP .....	2	
4	403-15660-01-00	KICK AXLE ASSEMBLY (403-15660-02-00) .....	1	
5	315-15641-00-00	GEAR, KICK (27T) .....	1	
6	90468-26048-00	CLIP .....	1	
7	90468-26048-00	CLIP .....	2	
8	99009-30400-00	CIRCLIP .....	1	
9	401-15676-00-00	COVER, SPRING .....	1	
10	90508-26041-00	SPRING, TORSION .....	1	
11	1W1-15666-00-00	SPACER .....	1	
12	93101-17062-00	OIL SEAL .....	1	
13	257-15668-00-00	STOPPER .....	1	
14	3UL-15620-00-00	KICK CRANK ASSEMBLY ....	1	
15	1T9-15621-00-00	. BOSS, KICK CRANK .....	1	
16	90501-12081-00	. SPRING, COMPRESSION ....	1	
17	90201-15234-00	. WASHER, PLATE .....	1	
18	99006-10600-00	. CIRCLIP .....	1	
19	156-15618-01-00	. COVER, KICK LEVER .....	1	
20	93507-32031-00	. BALL .....	1	
21	91316-08025-00	BOLT, SOCKET HEAD .....	1	

[www.legends-yamaha-enduros.com](http://www.legends-yamaha-enduros.com)

# CLUTCH



Ref. No.	Part Number	Description	Qty	Remarks
1	(1V1-16301-10-00)	CLUTCH ASSEMBLY .....	1	
2	1V1-16150-10-00	. PRIMARY DRIVEN GEAR COMP. (74T) .....	1	
3	131-16154-00-00	. PLATE, THRUST 1 .....	1	
4	1V1-16371-02-00	. BOSS, CLUTCH .....	1	
5	1V1-16324-00-00	. PLATE, CLUTCH 1 .....	4	
6	598-16321-01-00	. PLATE, FRICTION .....	5	
7	598-16351-00-00	. PLATE, PRESSURE 1 .....	1	
8	90501-20125-00	. SPRING, COMPRESSION ....	4	
9	90119-05001-00	. BOLT, WITH WASHER .....	4	
10	1V1-16367-00-00	. RING, CUSHION .....	5	
11	90170-12060-00	NUT .....	1	
12	90208-12015-00	WASHER, CONICAL SPRING ..	1	
13	336-16111-00-00	GEAR, PRIMARY DRIVE (19T) .	1	
14	90179-12244-00	NUT, SPEC"L SHAPE .....	1	
15	90208-12015-00	WASHER, CONICAL SPRING ..	1	
16	90201-17558-00	WASHER, PLATE .....	1	
17	90560-17147-00	SPACER .....	1	
18	137-16356-00-00	ROD, PUSH 1 .....	1	
19	93503-16010-00	BALL .....	1	
20	1X0-16357-00-00	ROD, PUSH 2 .....	1	
21	525-16380-00-00	PUSH LEVER ASSEMBLY ....	1	
22	90508-14132-00	SPRING, TORSION .....	1	
23	90201-14217-00	WASHER, PLATE .....	1	
24	93104-14059-00	OIL SEAL, SO-TYPE .....	1	
25	90149-12097-00	SCREW .....	1	
26	90179-12197-00	NUT .....	1	
27	93210-10096-00	O-RING .....	1	



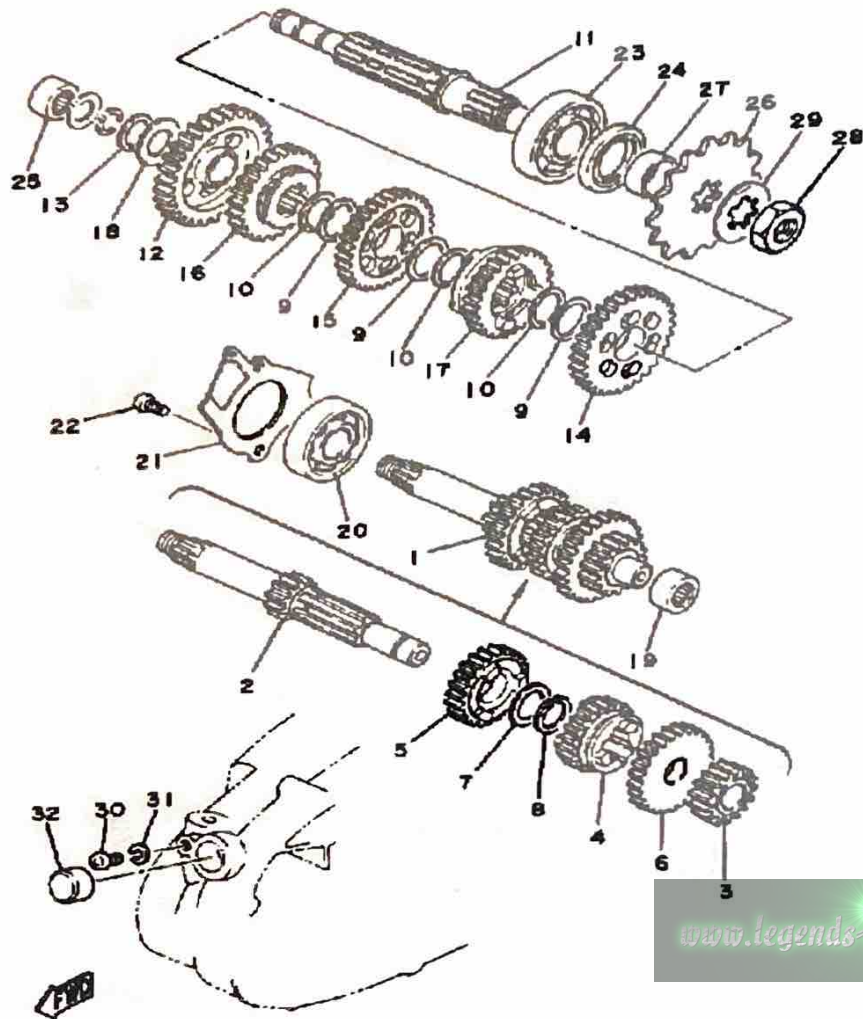
# TRANSMISSION

Ref. No.	Part Number	Description	Qty	Remarks
1	(558-17410-00-00)	MAIN AXLE	1	
2	558-17411-00-00	. AXLE, MAIN (11T)	1	
3	437-17121-02-00	. GEAR, 2ND PINION	1	
4	427-17131-00-00	. GEAR, 3RD PINION (19T)	1	
5	(437-17141-00-00)	GEAR, 4TH PINION	1	
6	437-17151-00-00	. GEAR, 5TH PINION (25T)	1	
7	90201-20266-00	. WASHER, PLATE (1.0T)	1	
8	93410-20038-00	. CIRCLIP	1	
9	90201-20266-00	WASHER, PLATE (1.0T)	3	
10	93410-20038-00	CIRCLIP	3	
11	558-17421-00-00	AXLE, DRIVE	1	
12	248-17211-00-00	GEAR, 1ST WHEEL (35T)	1	
13	93440-15012-00	CIRCLIP	1	
14	427-17221-00-00	GEAR, 2ND WHEEL (30T)	1	
15	427-17231-00-00	GEAR, 3RD WHEEL (26T)	1	
16	248-17241-00-00	GEAR, 4TH WHEEL (23T)	1	
17	437-17251-00-00	GEAR, 5TH WHEEL (20T)	1	
18	164-17427-00-06	SHIM 1 (0.6T)	1	
19	93315-31502-00	BEARING	1	
20	93306-30309-00	BEARING	1	
21	1G8-17471-00-00	PLATE, COVER	1	
22	98580-06012-00	SCREW, PAN HEAD	2	
23	93306-30421-00	BEARING (B6304C3)	1	
24	93102-26042-00	OIL SEAL	1	
25	93311-31567-00	BEARING, CYLINDRICAL	1	
26	93812-14035-00	SPROCKET, DRIVE 14T (5171746142)	1	
27	90387-20491-00	COLLAR	1	
28	90179-15018-00	UNAVAILABLE IN PRICE BOOK	1	

CONTINUED ON NEXT FRAME ►

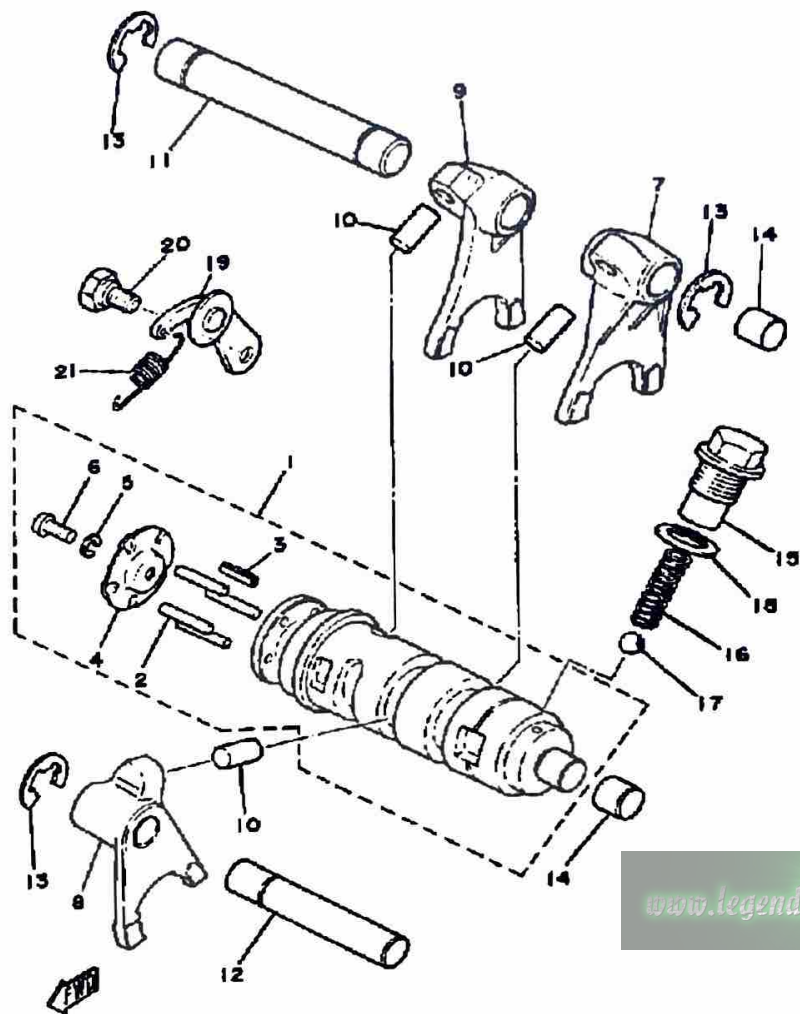


# TRANSMISSION



Ref. No.	Part Number	Description	Qty	Remarks
29	90215-16020-00	WASHER, LOCK .....	1	
30	98580-06010-00	SCREW, PAN HEAD (92503-06010) .....	1	
31	92995-06100-00	WASHER, SPRING .....	1	
32	90338-20023-00	PLUG .....	1	

# SHIFT CAM-FORK

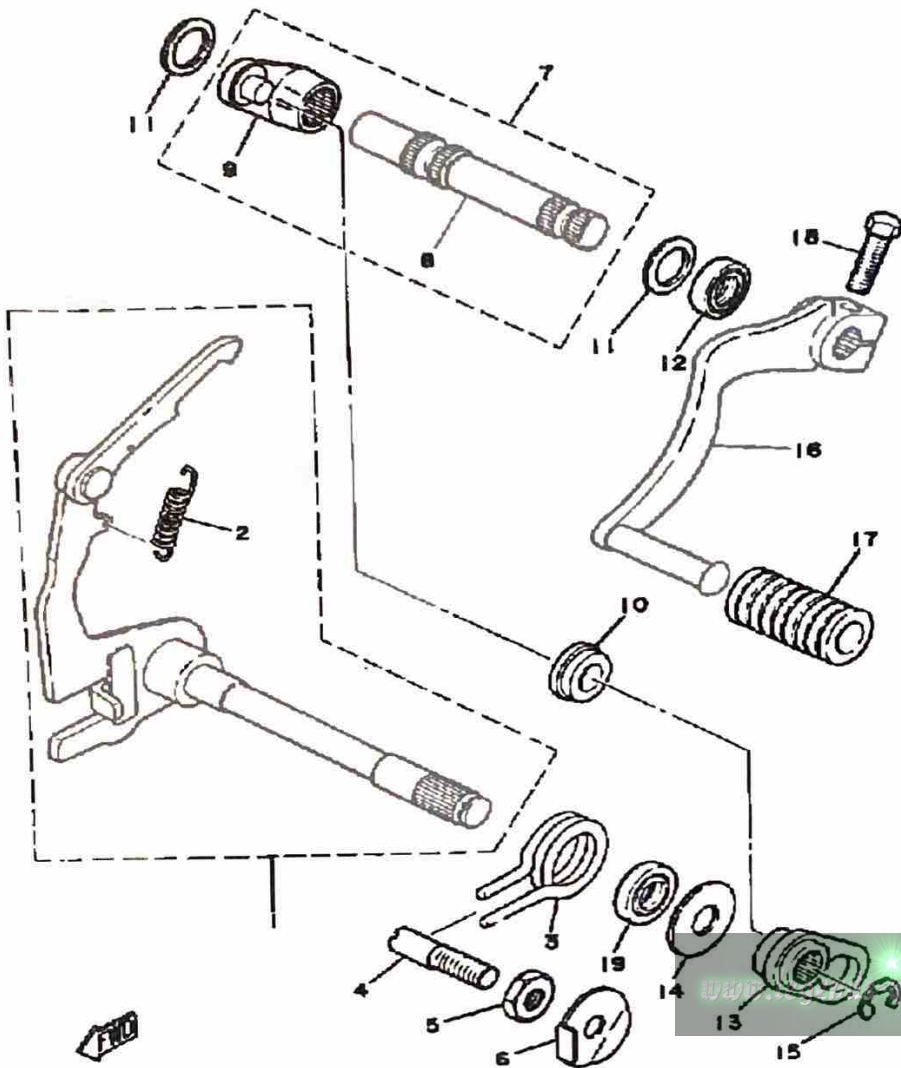


Ref. No.	Part Number	Description	Qty	Remarks
1	401-18540-00-00	SHIFT CAM ASSEMBLY	1	
2	93604-22050-00	. PIN, DOWEL	4	
3	91609-40016-00	. PIN, SPRING	1	
4	164-18561-00-00	. PLATE, SIDE 1	1	
5	92990-05100-00	. WASHER, SPRING	1	
6	98580-05012-00	. SCREW, PAN HEAD	1	
7	463-18511-00-00	FORK, SHIFT 1	1	
8	463-18512-00-00	FORK, SHIFT 2	1	
9	463-18513-00-00	FORK, SHIFT 3	1	
10	90250-08017-00	PIN, STRAIGHT	3	
11	214-18531-00-00	BAR, SHIFT FORK GUIDE 1	1	
12	(248-18531-00-00)	BAR, SHIF FRK GDE 1	1	
13	93430-10017-00	CIRCLIP	3	
14	214-15385-00-00	PLUG, BLIND	2	
15	90109-14385-00	BOLT	1	
16	90501-12083-00	SPRING, COMPRESSION (174-18558-00)	1	
17	93505-16006-00	BALL	1	
18	137-15353-00-00	GASKET, DRAIN	1	
19	132-18140-01-00	STOPPER LEVER ASSEMBLY	1	
20	90109-06001-00	BOLT	1	
21	90506-09112-00	SPRING, TENSION	1	

www.legends-yamaha-enduros.com

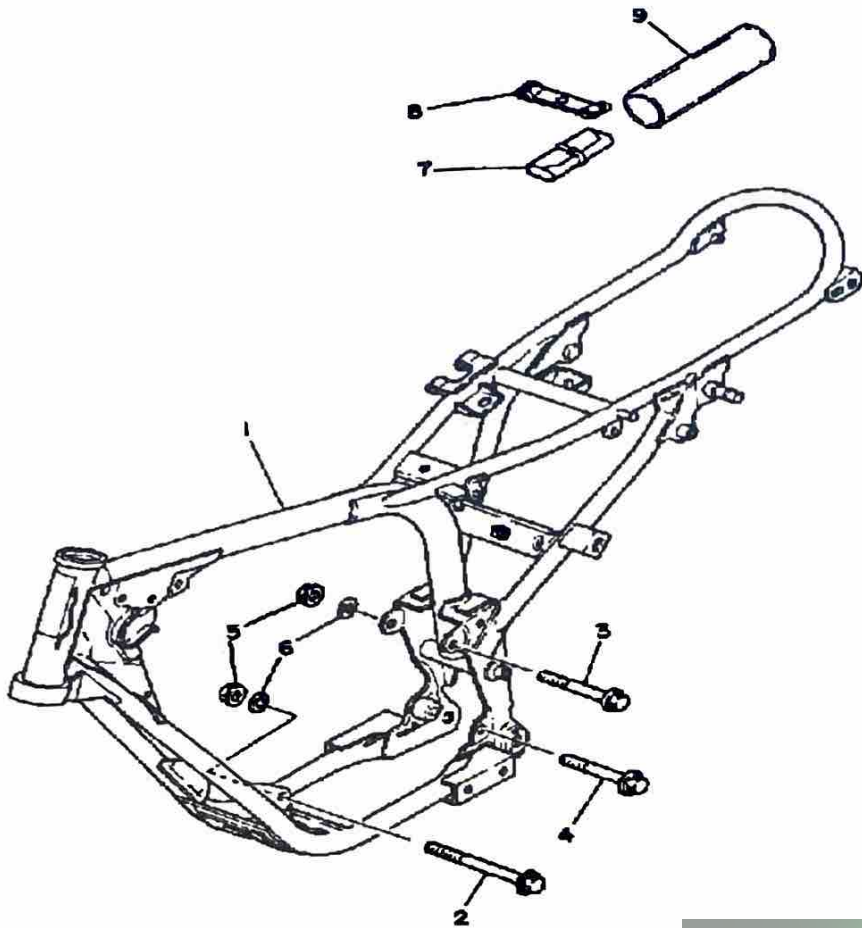
# SHIFT SHAFT

Ref. No.	Part Number	Description	Qty	Remarks
1	558-18101-00-00	SHIFT SHAFT ASSEMBLY	1	
2	90506-09009-00	. SPRING, TENSION	1	
3	90508-32207-00	SPRING, TORSION (132-18124-00)	1	
4	90149-08094-00	SCREW	1	
5	90170-08029-00	NUT	1	
6	90215-08014-00	WASHER, LOCK	1	
7	401-18102-01-00	SHIFT SHAFT ASSEMBLY 2	1	
8	401-18155-02-00	. SHAFT, SHIFT 2	1	
9	401-18151-00-00	. LEVER, SHIFT 3	1	
10	401-18178-00-00	ROLLER, SHIFT LEVER	1	
11	401-18334-00-00	SHIM	2	
12	93109-12012-00	OIL SEAL	1	
13	401-18152-01-00	LEVER, SHIFT 4	1	
14	90201-12575-00	WASHER, PLATE	1	
15	99001-08600-00	CIRCLIP	1	
16	1T9-18111-00-00	PEDAL, SHIFT	1	
17	132-18113-01-00	COVER, SHIFT PEDAL	1	
18	97011-06020-00	BOLT	1	
19	93101-12060-00	OIL SEAL	1	



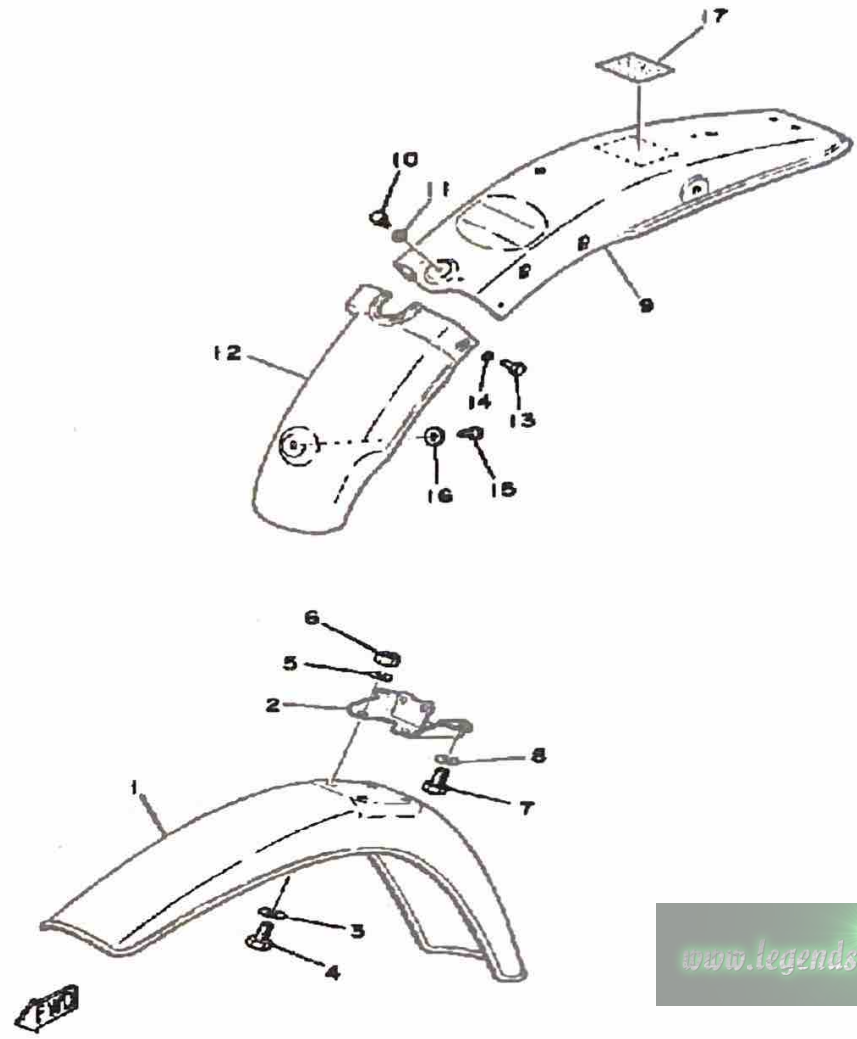
# FRAME-TOOL

Ref. No.	Part Number	Description	Qty	Remarks
1	(3A3-21110-01-33)	FRAME .....	1	YAMAHA BLK
2	90105-08094-00	BOLT, WASHER BASED .....	1	
3	90105-08095-00	BOLT, WASHER BASED .....	1	
4	95811-10075-00	BOLT, FLANGE .....	1	
5	95701-08500-00	NUT, FLANGE .....	2	
6	92990-08100-00	WASHER .....	2	
7	1E7-W2810-00-00	TOOL KIT (1V1-28100-00) .....	1	
8	21V-21376-00-00	BAND, TOOL .....	1	
9	(1T9-28171-00-00)	COVER, TOOL BOX .....	1	



[www.legends-yamaha-enduros.com](http://www.legends-yamaha-enduros.com)

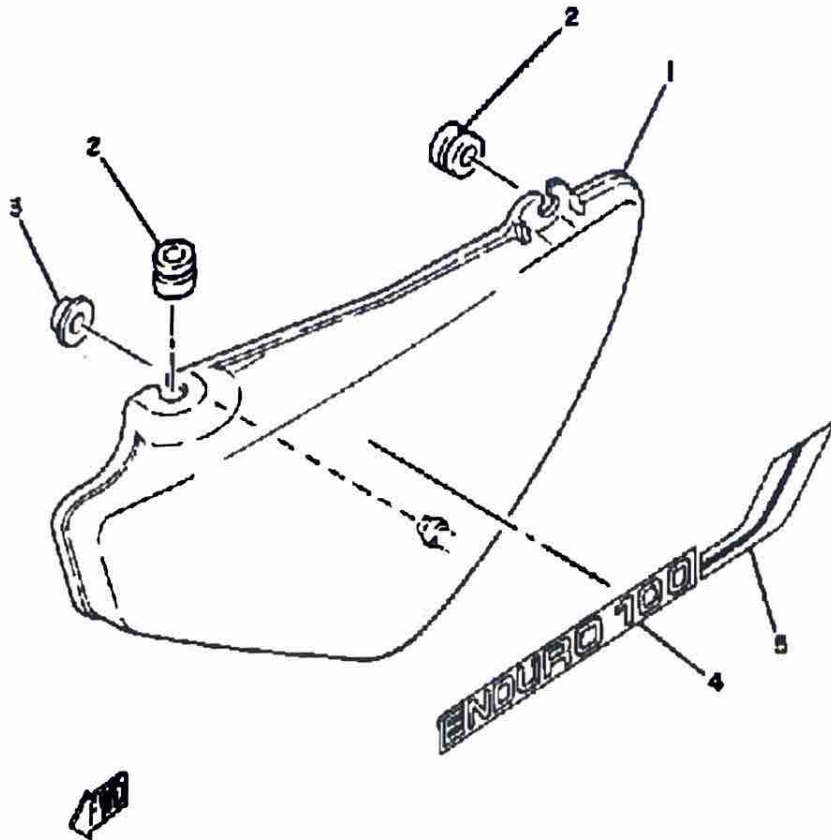
# FRONT FENDER-REAR FENDER



Ref. No.	Part Number	Description	Qty	Remarks
1	2E7-21511-00-00	FENDER, FRONT	1	CLEAN WHITE
2	1T9-21513-00-00	STAY, FENDER 1	1	
3	90201-06067-00	WASHER, PLATE	4	
4	97301-06014-00	BOLT, HEXAGON	4	
5	92995-06100-00	WASHER, SPRING	4	
6	95380-06600-00	NUT	4	
7	97011-06010-00	BOLT	2	
8	92995-06100-00	WASHER, SPRING	2	
9	1T9-21611-00-36	FENDER, REAR	1	CLEAN WHITE
10	97301-06014-00	BOLT, HEXAGON	1	
11	90201-06067-00	WASHER, PLATE	1	
12	1T9-21621-00-00	FLAP	1	
13	97013-06012-00	BOLT	2	
14	90201-061A5-00	WASHER, PLATE	2	
15	97013-06012-00	BOLT	1	
16	90201-06067-00	WASHER, PLATE	1	
17	(3A3-21683-10-00)	PLATE, SPEC	1	
	(3A3-21683-30-00)	PLATE, SPEC	1	

[www.legends-yamaha-enduros.com](http://www.legends-yamaha-enduros.com)

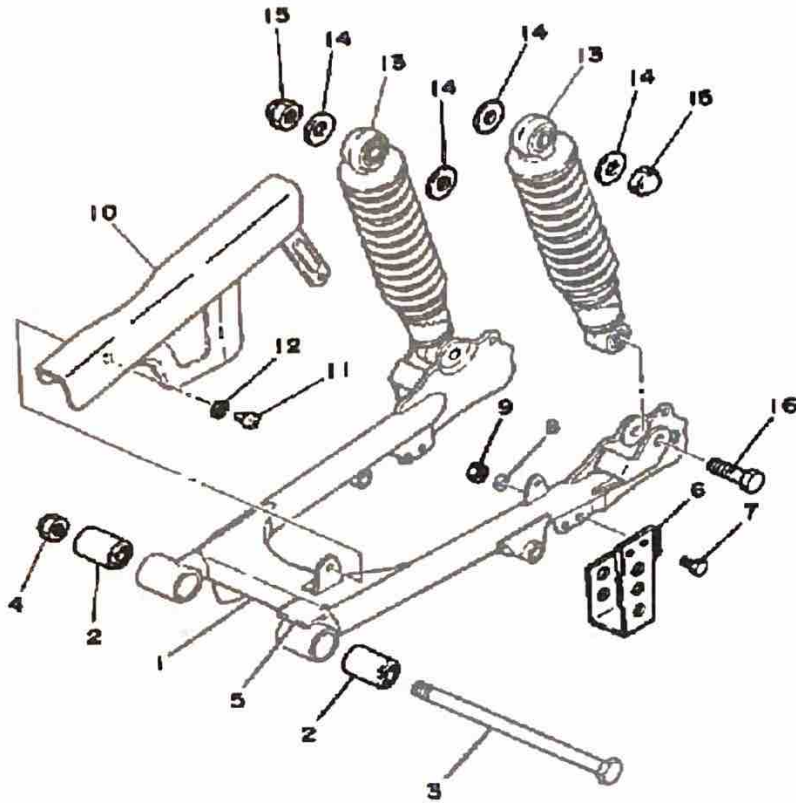
# SIDE COVER



Ref. No.	Part Number	Description	Qty	Remarks
1	(3A3-21711-00-20)	COVER, SIDE 1	1	CRYSTAL SLVR COMP. YEL STAR SILVER
	1T9-21711-00-00	COVER, SIDE 1	1	
	2F5-21711-01-6M	COVER, SIDE 1	1	
2	90480-12053-00	GROMMET	2	
3	90480-01401-00	GROMMET	1	
4	3A3-21781-01-00	EMBLEM 1	1	
5	(3A3-21782-00-00)	EMBLEM 2	1	
	3A3-21782-10-00	EMBLEM 2	1	
	3A3-21782-20-00	EMBLEM 2	1	

[www.legends-yamaha-enduros.com](http://www.legends-yamaha-enduros.com)

# REAR ARM-SUSPENSION



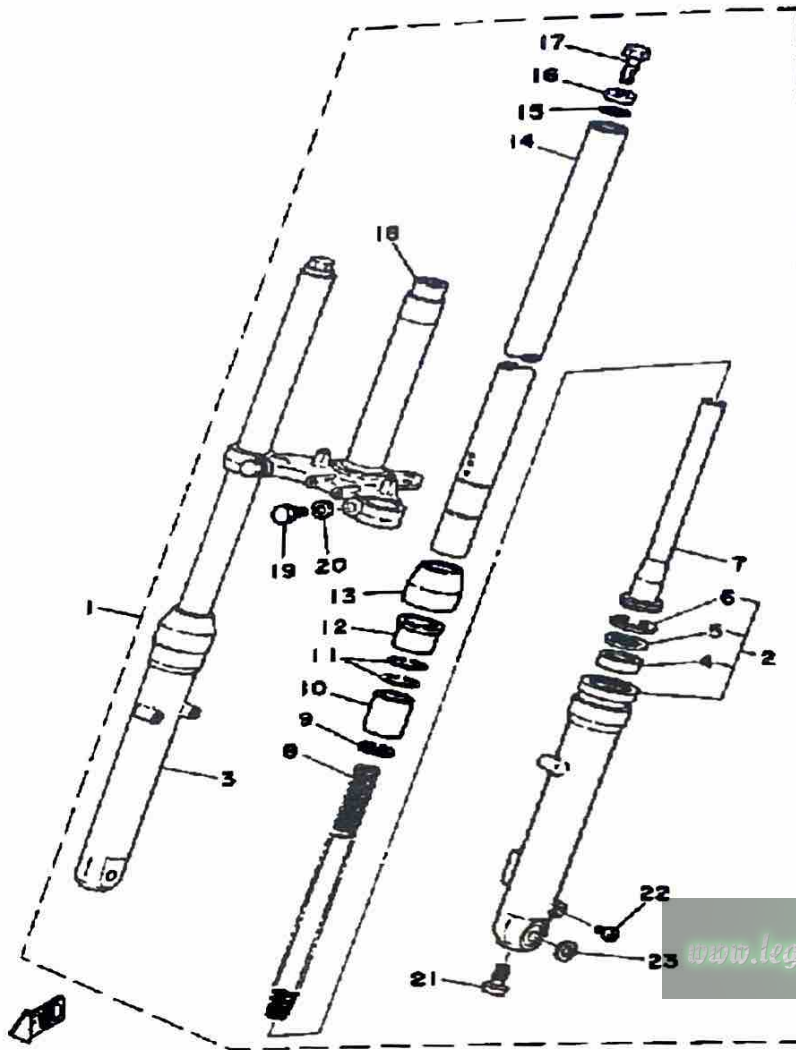
Ref. No.	Part Number	Description	Qty	Remarks
1	1T9-22110-01-33	REAR ARM .....	1	YAMAHA BLK
2	276-22123-00-00	BUSH 1 .....	2	
3	401-22141-00-00	SHAFT, PIVOT .....	1	
4	95712-12300-00	2 .....	1	
5	183-22151-00-00	SEAL, GUARD .....	1	
6	492-22153-00-33	GUARD, CHAIN .....	1	
7	97301-06014-00	BOLT, HEXAGON .....	2	
8	92995-06100-00	WASHER, SPRING .....	2	
9	95380-06600-00	NUT .....	2	
10	1T9-22311-00-33	CASE, CHAIN .....	1	YAMAHA BLK
11	98580-05010-00	SCREW, PAN HEAD .....	2	
12	92990-05100-00	WASHER, SPRING .....	2	
13	1T9-22210-00-33	SHK/ABS ASSEMBLY, REAR ..	2	YAMAHA BLK
14	90201-12190-00	WASHER, PLATE .....	4	
15	95303-12800-00	NUT (CROWN) .....	2	
16	90101-10633-00	BOLT, HEXAGON .....	2	



[www.legends-yamaha-enduros.com](http://www.legends-yamaha-enduros.com)

# FRONT FORK

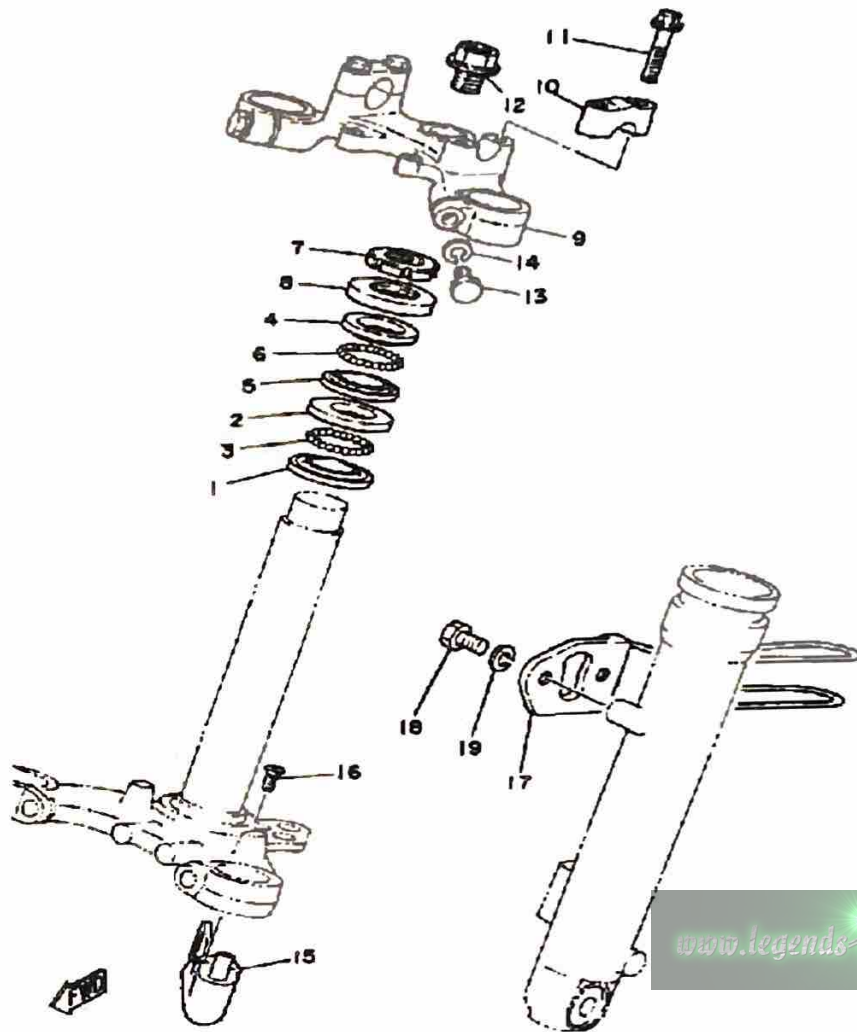
Ref. No.	Part Number	Description	Qty	Remarks
1	(1T9-23101-00-00)	FRONT FORK ASSEMBLY	1	
2	1T9-23126-00-35	. TUBE, OUTER (LEFT)	1	SILVER
3	(462-23136-02-35)	TUBE, OUTER 2	1	SILVER
4	462-23145-02-00	.. OIL SEAL	2	
5	462-23146-02-00	.. WASHER, OIL SEAL	2	
6	462-23156-02-00	.. CLIP, OIL SEAL	2	
7	462-23170-02-00	. CYLINDER COMP., FRONT FORK	2	
8	1T9-23141-00-00	. SPRING, FRONT FORK	2	
9	462-23183-02-00	. CIRCLIP	2	
10	462-23171-02-00	. PISTON, FRONT FORK	2	
11	462-23157-02-00	RING, PISTON	4	
12	462-23125-02-00	. METAL, SLIDE 1	2	
13	462-23144-02-00	. SEAL, DUST	2	
14	1T9-23124-00-00	. TUBE, INNER 1	2	
15	462-23114-02-00	. GASKET	2	
16	276-23112-50-00	. WASHER, CAP	2	
17	205-23111-40-00	. BOLT, CAP	2	
18	1T9-23340-00-90	. UNDER BRACKET COMP.	1	UNI CHROME
19	97013-10030-00	. BOLT (8J7) (97303-10030)	2	
20	92990-10100-00	. WASHER, SPRING	2	
21	98580-06025-00	. SCREW, PAN HEAD	2	
22	451-23119-01-00	. PLUG, DRAIN	2	
23	462-23392-02-00	. WASHER, SPECIAL	2	



[www.legends-yamaha-enduros.com](http://www.legends-yamaha-enduros.com)

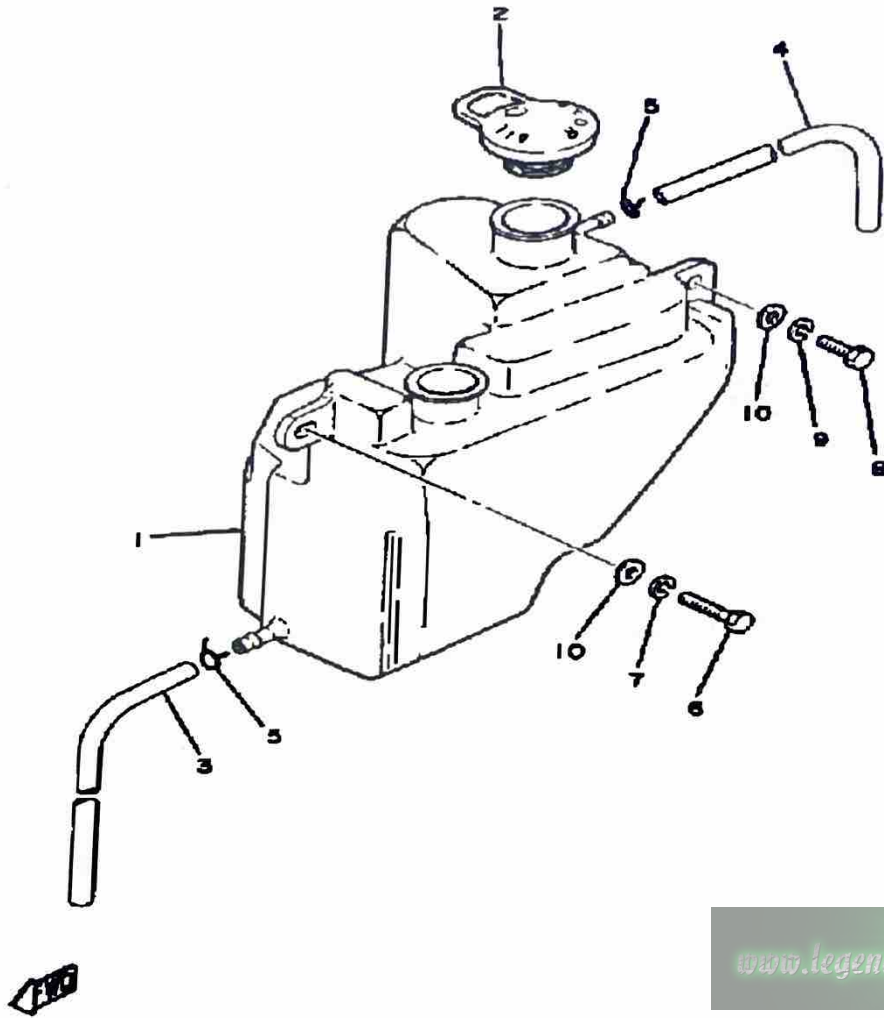


# STEERING



Ref. No.	Part Number	Description	Qty	Remarks
1	156-23411-00-00	RACE, BALL 1 .....	1	
2	156-23412-00-00	RACE, BALL 2 .....	1	
3	93501-04011-00	BALL .....	19	
4	22F-23411-01-00	RACE, BALL 1 .....	1	
5	22F-23412-01-00	RACE, BALL 2 .....	1	
6	93503-16010-00	BALL .....	22	
7	90179-25033-00	NUT .....	1	
8	122-23416-00-00	COVER, BALL RACE 2 .....	1	
9	354-23435-00-33	CROWN, HANDLE .....	1	YAMAHA BLK
10	1E6-23441-00-00	HOLDER, HANDLE UPR .....	2	LW GLOSS BK
11	95821-08035-00	BOLT, FLANGE .....	4	
12	90105-14136-00	BOLT, WASHER BASED .....	1	
13	97313-08030-00	BOLT, HEXAGON .....	2	
14	92990-08100-00	WASHER .....	2	
15	2N3-23408-00-00	STEERING LOCK ASSEMBLY (5U4-23480-00) .....	1	
16	(90152-05009-00)	SCREW, COUNTERSUNK .....	2	
	98780-05012-00	SCREW, FLAT HEAD .....	2	
17	1T9-23318-00-00	HOLDER, CABLE 1 .....	1	
18	97013-06012-00	BOLT .....	2	
19	92995-06100-00	WASHER, SPRING .....	2	

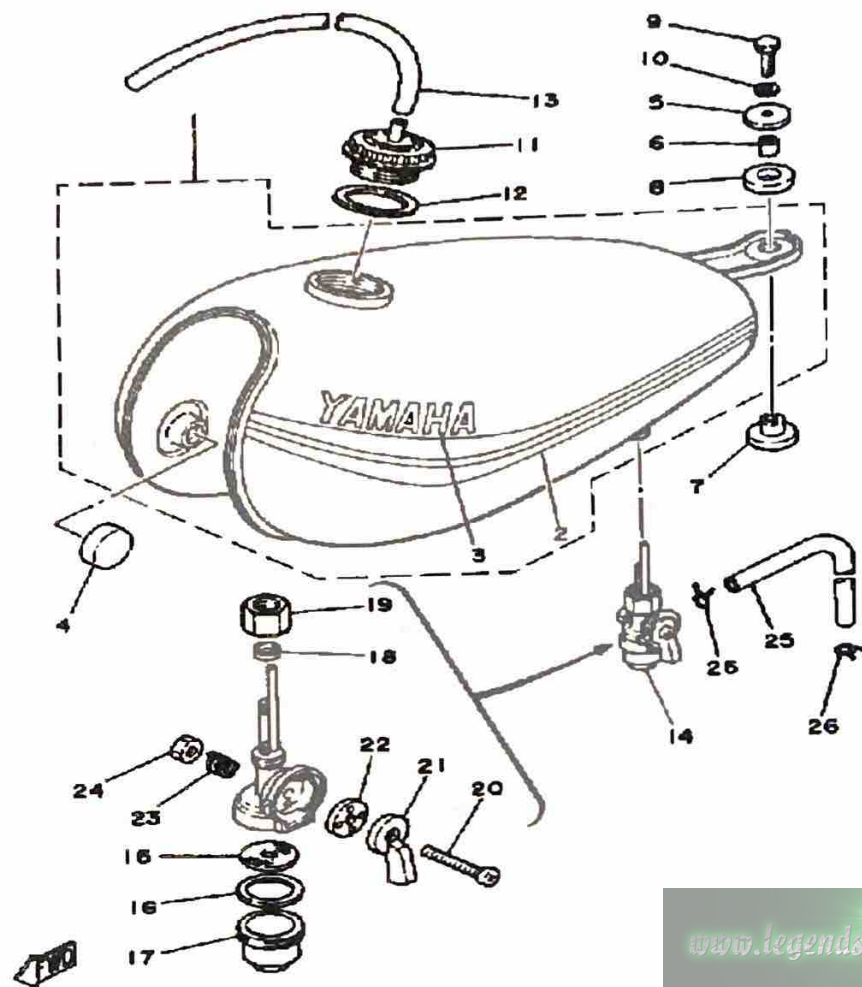
# OIL TANK



Ref. No.	Part Number	Description	Qty	Remarks
1	1T9-21751-00-00	TANK, OIL .....	1	
2	1T9-21771-00-00	BODY, CAP .....	1	
3	90445-09252-00	HOSE .....	1	
4	90445-09111-00	HOSE .....	1	
5	90467-08003-00	CLIP .....	2	
6	97011-06025-00	BOLT (97001-06025) .....	1	
7	92995-06100-00	WASHER, SPRING .....	1	
8	97313-06016-00	BOLT, HEXAGON .....	1	
9	92995-06100-00	WASHER, SPRING .....	1	
10	90201-06067-00	WASHER, PLATE .....	2	

[www.legends-yamaha-enduros.com](http://www.legends-yamaha-enduros.com)

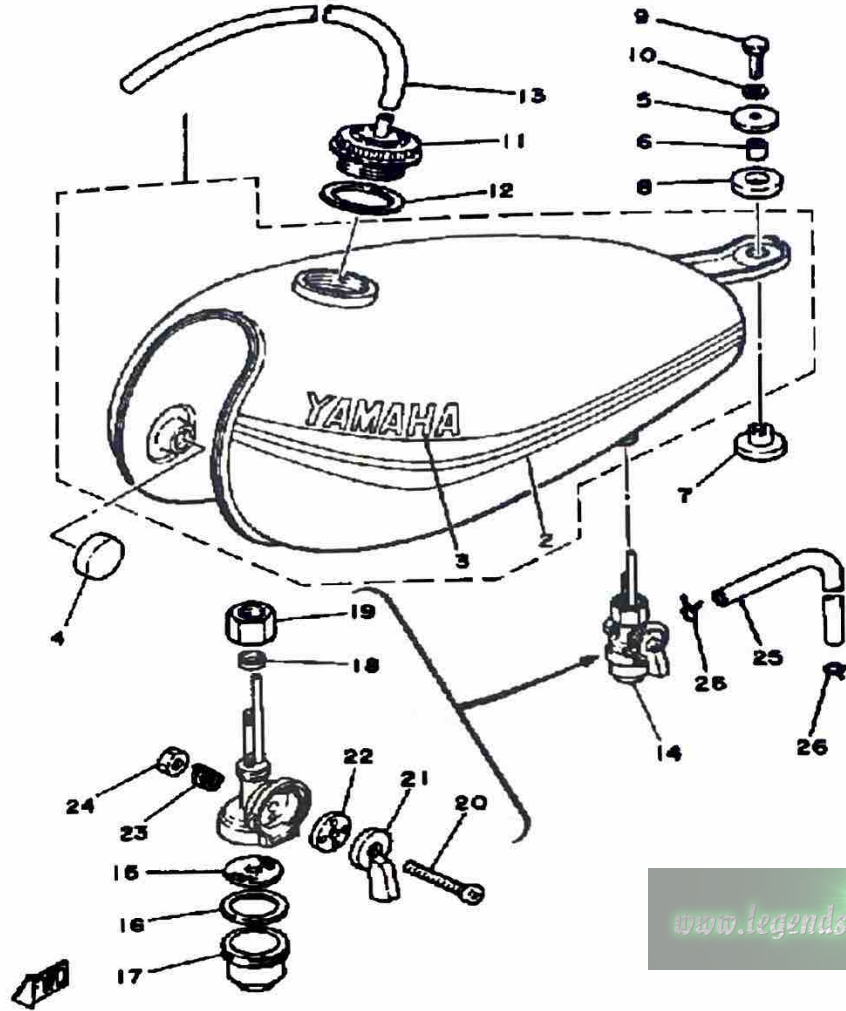
# FUEL TANK



Ref. No.	Part Number	Description	Qty	Remarks
1	(538-24110-Y0-01)	FUEL TANK	1	CRYSTAL SLVR COMP. YEL STAR SILVER
	(538-24110-Y0-04)	FUEL TANK	2	
	(538-24110-Y0-06)	FUEL TANK	1	
2	(3A3-24240-10-00)	GRAPHIC SET	1	
	(3A3-24240-20-00)	GRAPHIC SET	1	
	(3A3-24240-30-00)	GRAPHIC SET	1	
3	388-24161-00-00	. EMBLEM 1	2	
	451-24161-10-00	. EMBLEM 1	2	
4	122-24181-00-00	DAMPER, LOCATING 1	2	
5	90201-06074-00	WASHER, PLATE	1	
6	90387-07390-00	COLLAR	1	
7	90480-14088-00	GROMMET	1	
8	90202-14077-00	WASHER, PLATE	1	
9	97011-06025-00	BOLT (97001-06025)	1	
10	92995-06100-00	WASHER, SPRING	1	
11	322-24611-02-00	BODY, CAP	1	
12	90430-35122-00	GASKET	1	
13	90445-09282-00	HOSE	1	
14	367-24500-04-00	FUEL COCK ASSEMBLY 1 (5U7-24500-00)	1	
15	355-24515-00-00	. NET, FILTER 2	1	
16	102-24522-01-00	. GASKET	1	
17	122-24521-00-00	. CUP, FILTER	1	
18	122-24532-00-00	. GASKET	1	
19	603-24531-01-00	. NUT	1	
20	98501-05030-00	. SCREW, PAN HEAD	1	
21	(355-24524-01-00)	LEVER, COCK	1	
22	355-24523-00-00	. VALVE	1	
23	(355-24518-00-00)	WASHER, WAVE	1	

CONTINUED ON NEXT FRAME ►

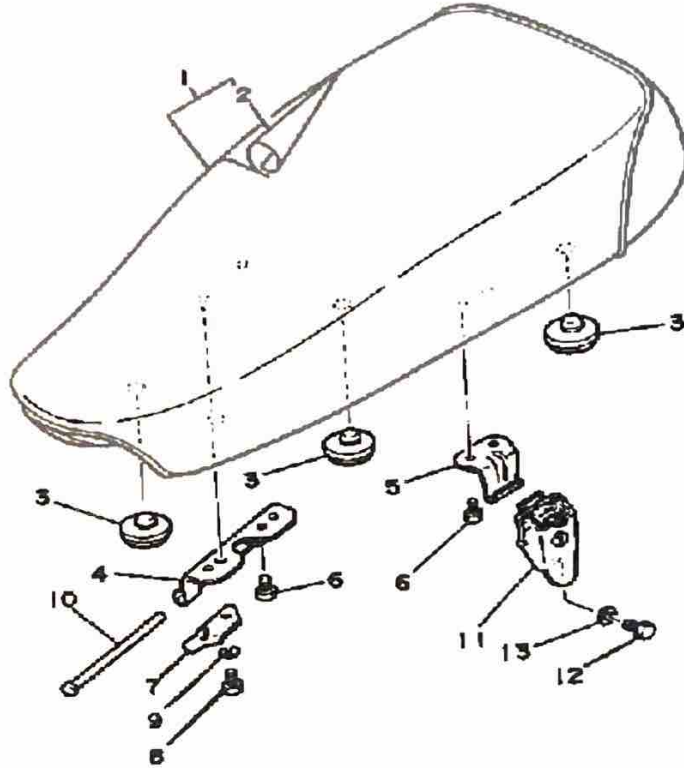
# FUEL TANK



Ref. No.	Part Number	Description	Qty	Remarks
24	95380-05600-00	. NUT .....	1	
25	90445-09066-00	HOSE .....	1	
26	90467-08003-00	CLIP .....	2	

[www.legends-yamaha-enduros.com](http://www.legends-yamaha-enduros.com)

# SEAT



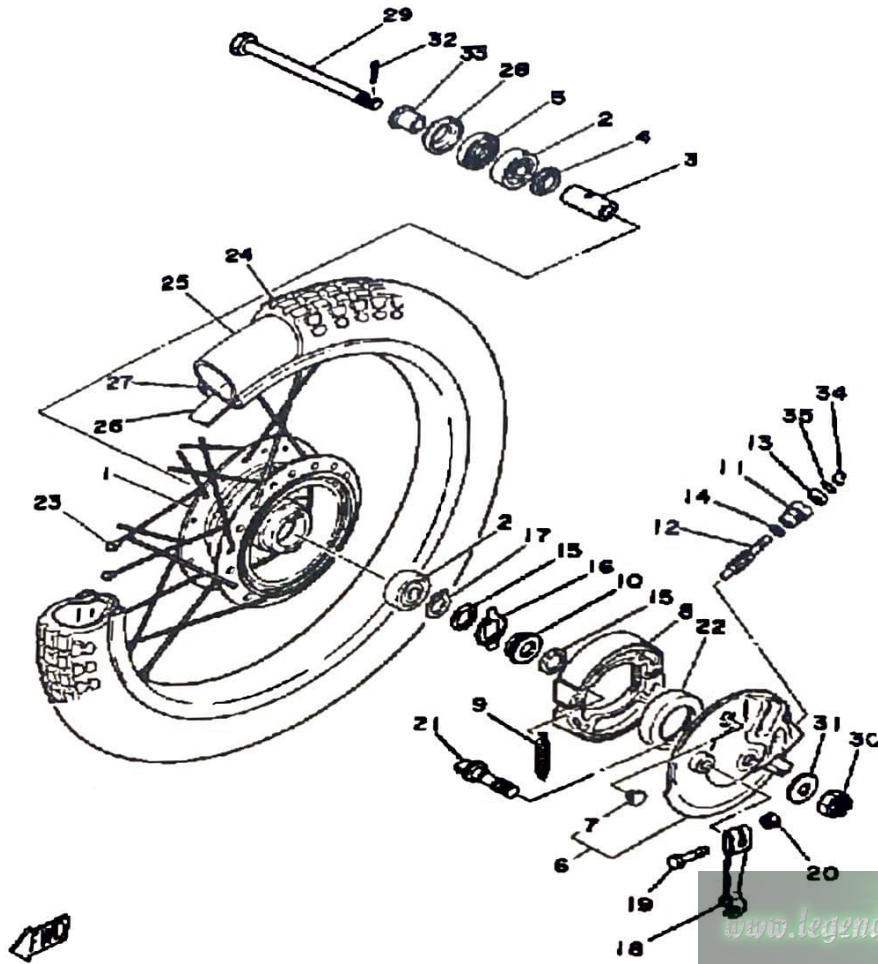
Ref. No.	Part Number	Description	Qty	Remarks
1	1T9-W2471-01-00	SINGLE SEAT ASSEMBLY	1	
2	1T9-24711-00-00	. COVER, SINGLE SEAT	1	
3	1L9-24741-00-00	PAD, SEAT	5	
4	538-24726-00-00	HINGE, SEAT	1	
5	278-24728-00-00	BRACKET, SEAT	1	
6	90101-06304-00	BOLT	3	
7	1T9-24768-00-00	STOPPER	1	
8	97013-06012-00	BOLT	1	
9	92995-06100-00	WASHER, SPRING	1	
10	1K8-24774-00-00	PIN	1	
11	526-24705-00-00	SEAT LOCK ASSEMBLY	1	
12	97013-06012-00	BOLT	1	
13	90201-061A5-00	WASHER, PLATE	1	



[www.legends-yamaha-enduros.com](http://www.legends-yamaha-enduros.com)

# FRONT WHEEL

Ref. No.	Part Number	Description	Qty	Remarks
1	248-25111-00-98	HUB, FRONT	1	LW GLOSS BK
2	93306-30103-00	BEARING (B6301Z)	2	
3	90560-12261-00	SPACER	1	
4	109-25315-00-00	FLANGE, SPACER	1	
5	93102-18008-00	OIL SEAL	1	
6	1T9-25016-01-98	BRAKE SHOE PLT ASSEMBLY	1	LW GLOSS BK
7	90480-10068-00	GROMMET	1	
8	10X-W2536-00-00	BRAKESHOE SET-2PCS	2	
	5H0-W2536-00-00	BRAKESHOE SET-2PCS	2	
9	90506-15260-00	SPRING, TENSION	2	
	90506-16150-00	SPRING, TENSION (102-25333-00)	2	
10	1T9-25135-00-00	GEAR, DRIVE	1	
11	109-25136-00-00	BUSH	1	
12	1T9-25138-00-00	GEAR, METER	1	
13	93104-07003-00	OIL SEAL	1	
14	90201-07076-00	WASHER, PLATE	1	
15	90201-20269-00	WASHER, PLATE	2	
16	183-25149-00-00	CLUTCH, METER	1	
17	99009-20400-00	CIRCLIP	1	
18	5H0-25155-00-00	LEVER, CAMSHAFT 1	1	
19	90101-06278-00	BOLT	1	
20	95380-06600-00	NUT	1	
21	3Y6-25351-00-00	CAMSHAFT	1	
22	93105-47007-00	OIL SEAL	1	
23	276-25104-40-00	SPOKE SET, FRONT	1	
24	94125-18369-00	TIRE (2.50-18)	1	
25	94225-18194-00	TUBE (2.50-18)	1	
26	94325-18059-00	BAND, RIM	1	

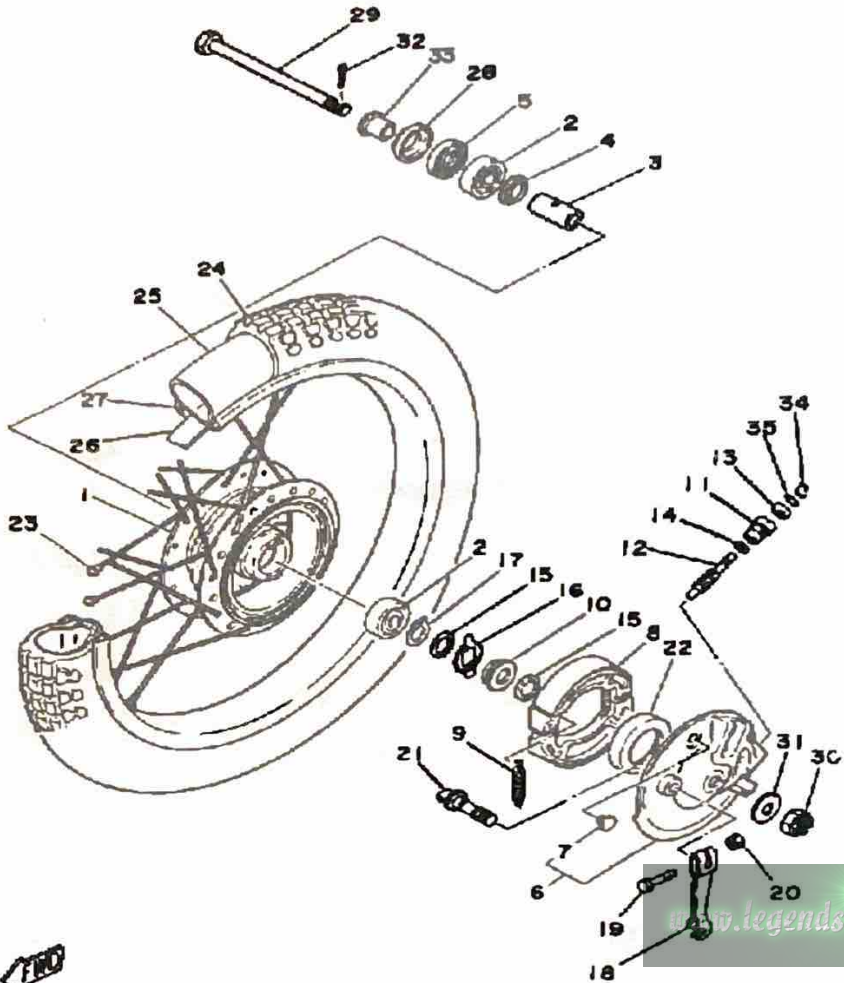


CONTINUED ON NEXT FRAME ►

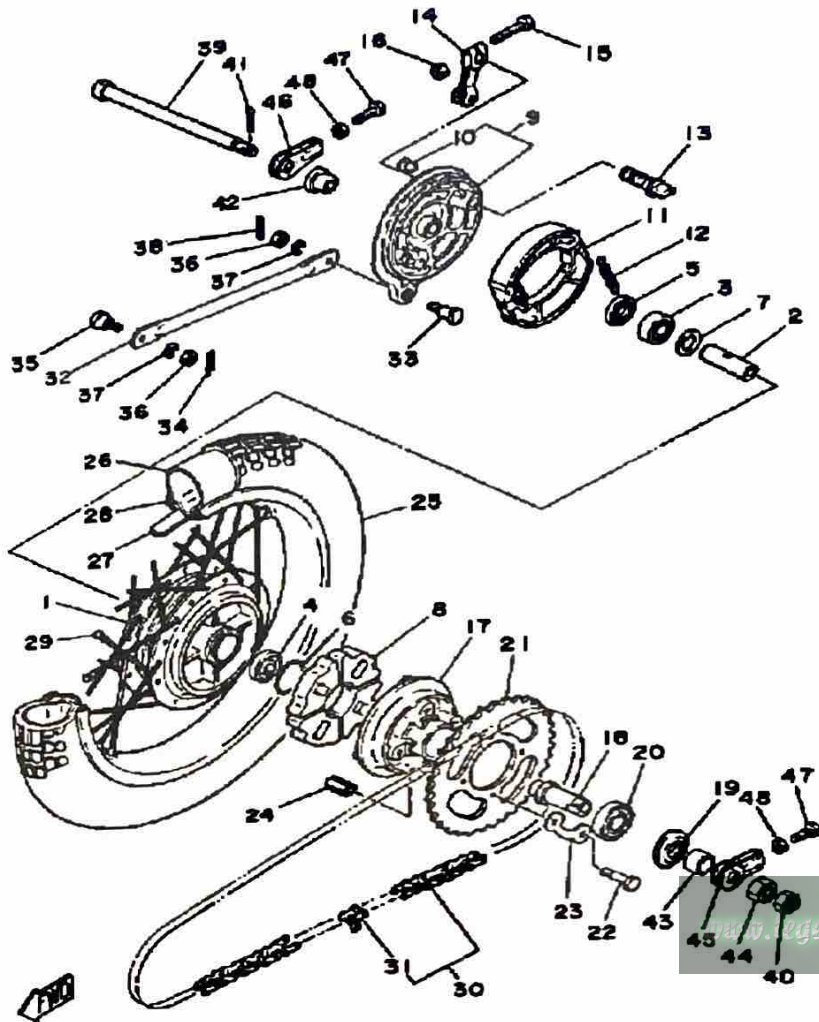
# FRONT WHEEL

Ref. No.	Part Number	Description	Qty	Remarks
----------	-------------	-------------	-----	---------

27	94414-18007-00	RIM (1.40X18)	1	
28	481-25118-01-00	COVER, HUB DUST	1	
29	90102-12015-00	BOLT, WITH HOLE	1	
30	95301-12900-00	NUT, SLOTTED	1	
31	90201-122A7-00	WASHER, PLATE	1	
32	91401-30030-00	PIN, COTTER	1	
33	90387-12616-00	COLLAR	1	
34	102-25137-00-00	RING, STOP	1	
35	93210-14104-00	O-RING	1	



# REAR WHEEL

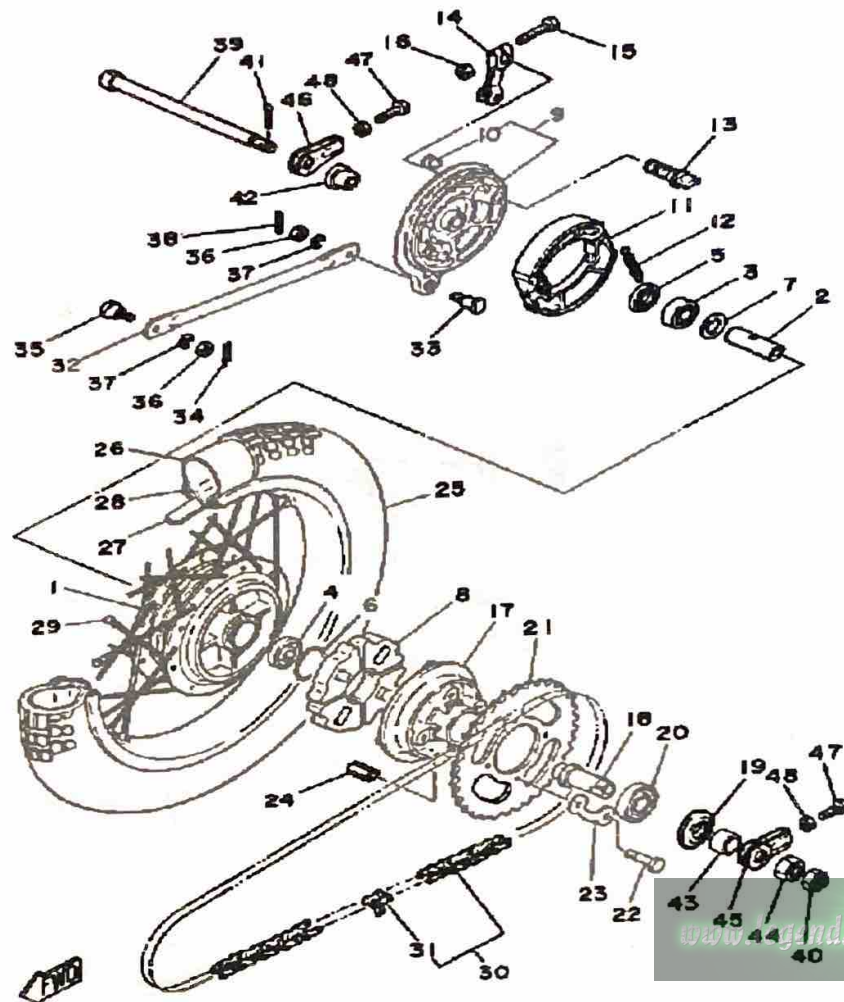


Ref. No.	Part Number	Description	Qty	Remarks
1	99999-02213-00	HUB, REAR	1	LW GLOSS BK
2	90560-12145-00	SPACER	1	
3	93306-30103-00	BEARING (B6301Z)	1	
4	93306-30101-00	BEARING (B6301)	1	
5	93104-21016-00	OIL SEAL, SO-TYPE	1	
6	93210-41041-00	O-RING	1	
7	109-25315-00-00	FLANGE, SPACER	1	
8	304-25364-01-00	DAMPER	4	
9	355-25026-00-98	BRAKE SHOE PLT ASSEMBLY	1	LW GLOSS BK
10	90480-10068-00	GROMMET	1	
11	10X-W2536-00-00	BRAKESHOE SET-2PCS	2	
	5H0-W2536-00-00	BRAKESHOE SET-2PCS	2	
12	90506-15260-00	SPRING, TENSION	2	
	90506-16150-00	SPRING, TENSION (102-25333-00)	2	
13	3Y6-25351-00-00	CAMSHAFT	1	
14	1T9-25355-00-00	LEVER, CAMSHAFT	1	
15	90101-06278-00	BOLT	1	
16	95380-06600-00	NUT	1	
17	296-25366-01-98	CLUTCH, HUB	1	LW GLOSS BK
18	167-25387-00-00	AXLE, SPROCKET	1	
19	93106-30004-00	OIL SEAL	1	
20	93306-00406-00	BEARING (B6004Z)	1	
21	283-25445-10-00	SPROCKET, DRVN 45T	1	YAMAHA BLK
22	90109-08361-00	BOLT	4	
23	102-25412-00-00	WASHER	2	
24	90179-08639-00	NUT, SPEC'L SHAPE (30)	4	
25	94130-16368-00	TIRE (3.00-16)	1	
26	94230-10675-00	UNAVAILABLE IN PRICE BOOK	1	INOUE

CONTINUED ON NEXT FRAME ►



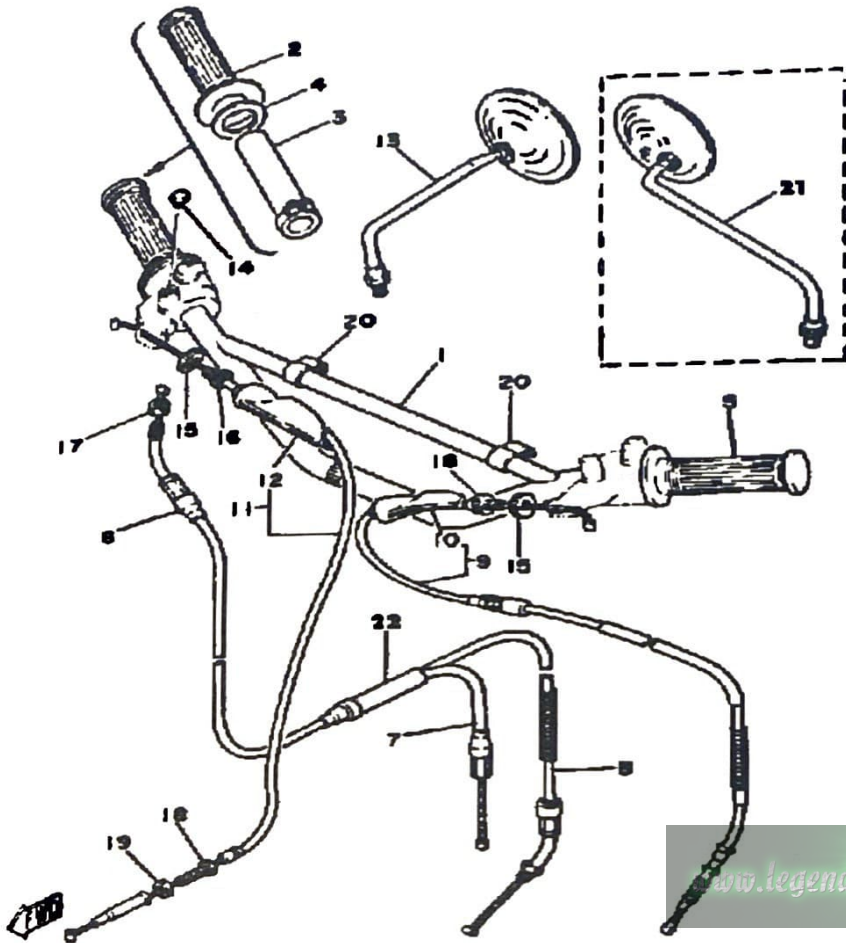
# REAR WHEEL



Ref. No.	Part Number	Description	Qty	Remarks
27	94330-16058-00	BAND, RIM (3.00-16)	1	INOUE
28	94416-16008-00	RIM 1.60X 6	1	
29	538-25304-10-00	SPOKE SET, REAR	1	
30	94500-03102-00	CHAIN	1	
31	94600-03001-00	. JOINT, CHAIN	1	
32	1T9-25371-00-00	BAR, TENSION	1	
33	90109-08183-00	BOLT	1	
34	90468-10050-00	CLIP	1	
35	90109-08368-00	BOLT	1	
36	95303-08700-00	NUT	2	
37	92990-08100-00	WASHER	2	
38	91490-20020-00	PIN, COTTER	1	
39	390-25381-01-00	AXLE, WHEEL	1	
40	90171-10004-00	NUT, CASTLE	1	
41	91490-20020-00	PIN, COTTER	1	
42	90387-12102-00	COLLAR	1	
43	90387-18144-00	COLLAR	1	
44	90170-18165-00	NUT	1	
45	241-25388-00-00	PULLER, CHAIN 1	1	
46	241-25389-10-00	PULLER, CHAIN 2	1	
47	90101-06016-00	BOLT	2	
48	95380-06600-00	NUT	2	

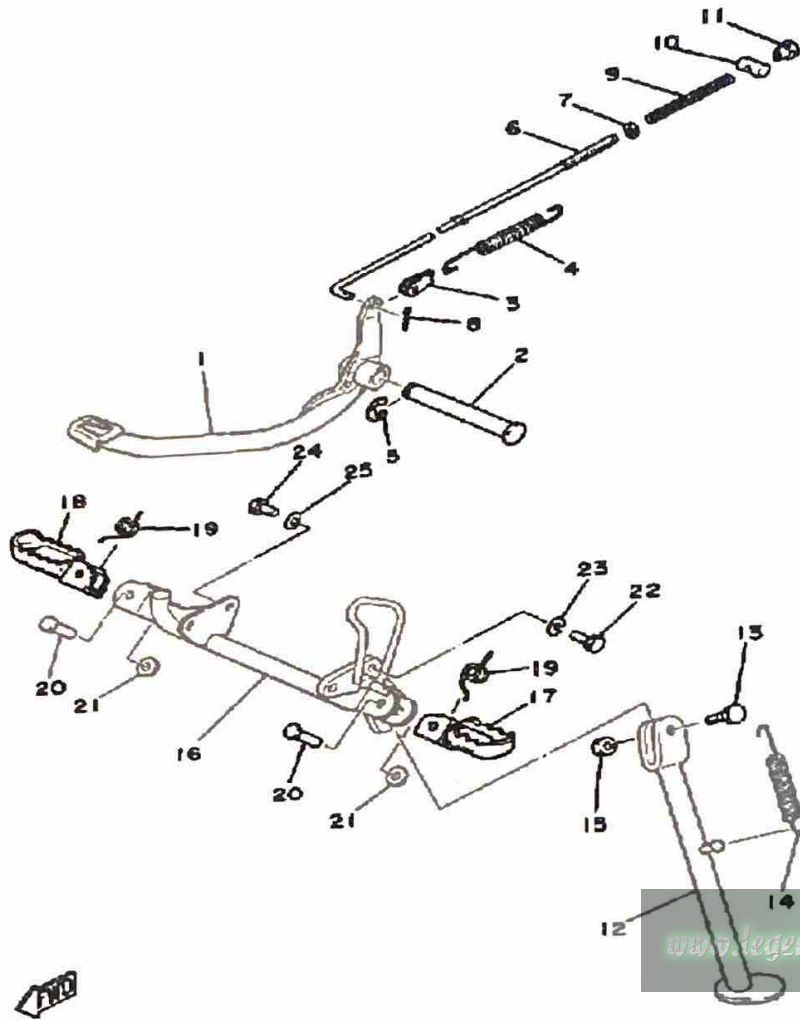
# STEERING HANDLE - CABLE

Ref. No.	Part Number	Description	Qty	Remarks
1	1T9-26111-01-00	HANDLEBAR (1T9-26111-00) ..	1	
2	1A0-26242-01-00	GRIP (RIGHT) .....	1	
3	1V1-26243-00-00	TUBE, THRTL GUIDE .....	1	
4	90201-261L1-00	WASHER, PLATE (1V1-26249-00) .....	1	
5	1E6-26241-00-00	GRIP LH .....	1	
6	2F5-26311-00-00	CABLE, THROTTLE 1 .....	1	
7	1T9-26312-00-00	CABLE, THROTTLE 2 .....	1	
8	1T9-26321-00-00	CABLE, PUMP .....	1	
9	1T9-26335-00-00	CABLE, CLUTCH .....	1	
10	382-26372-01-00	. COVER, HANDLE LEVER ...	1	
11	3M1-26341-00-00	CABLE, BRAKE .....	1	
12	498-26372-00-00	. COVER, HANDLE LEVER 1 ..	1	
13	266-26290-10-00	3MIRROR ASSEMBLY LH ....	1	
14	90338-07011-00	PLUG, SPEC"L SHAPE .....	1	
15	90179-08316-00	NUT .....	2	
16	90123-08046-00	BOLT .....	2	
17	90170-10044-00	NUT, HEXAGON .....	1	
18	90123-06011-00	BOLT .....	1	
19	90179-06143-00	NUT, SPEC"L SHAPE .....	1	
20	90468-15064-00	CLIP .....	2	
21	395-26290-00-00	MIRROR ASSEMBLY RH .....	1	ALT. PART
22	214-26261-00-00	CONNECTOR, CABLE .....	1	



[www.legends-yamaha-enduros.com](http://www.legends-yamaha-enduros.com)

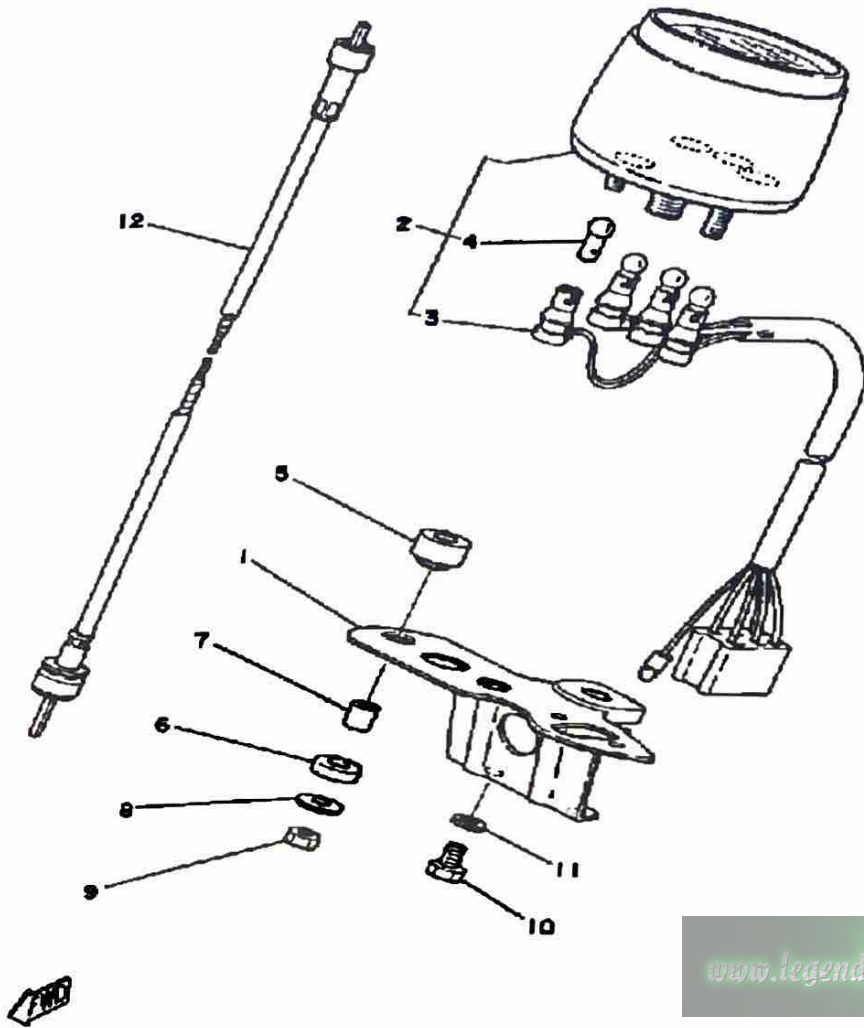
# STAND - FOOTREST



Ref. No.	Part Number	Description	Qty	Remarks
1	538-27211-00-R4	PEDAL, BRAKE	1	BLACK
2	2A3-27212-00-00	SHAFT, BRAKE PEDAL	1	
	90201-06042-00	WASHER, PLATE	2	
3	1T9-27254-00-00	HOOK	1	
4	90506-20157-00	SPRING, TENSION	1	
5	93430-12008-00	CIRCLIP	1	
6	1T9-27231-00-00	ROD, BRAKE	1	
7	92990-06200-00	WASHER	1	
8	91490-20020-00	PIN, COTTER	1	
9	90501-10245-00	SPRING, COMPRESSION	1	
10	90249-12008-00	PIN	1	
11	90179-06411-00	NUT	1	
12	367-27311-02-R4	STAND, SIDE	1	BLACK
	3A3-27311-00-R4	STAND, SIDE	1	
13	90109-08031-00	BOLT	1	
14	90506-29052-00	SPRING, TENSION	1	
15	95303-08700-00	NUT	1	
16	(3A3-27451-00-R4)	FOOTREST	1	UNI CHROME (BLACK)
	1T9-27451-02-R4	FOOTREST	1	BLACK
17	22W-27411-01-90	FOOTREST 1	1	UNI CHROME (BLACK)
18	22W-27421-01-90	FOOTREST 2	1	UNI CHROME (BLACK)
19	90508-20023-00	SPRING, TORSION	2	
20	90243-08006-00	PIN	2	
22	97313-08020-00	BOLT, HEXAGON	2	
23	92990-08100-00	WASHER	2	
24	97313-08016-00	BOLT, HEXAGON	2	
25	92990-08100-00	WASHER	2	

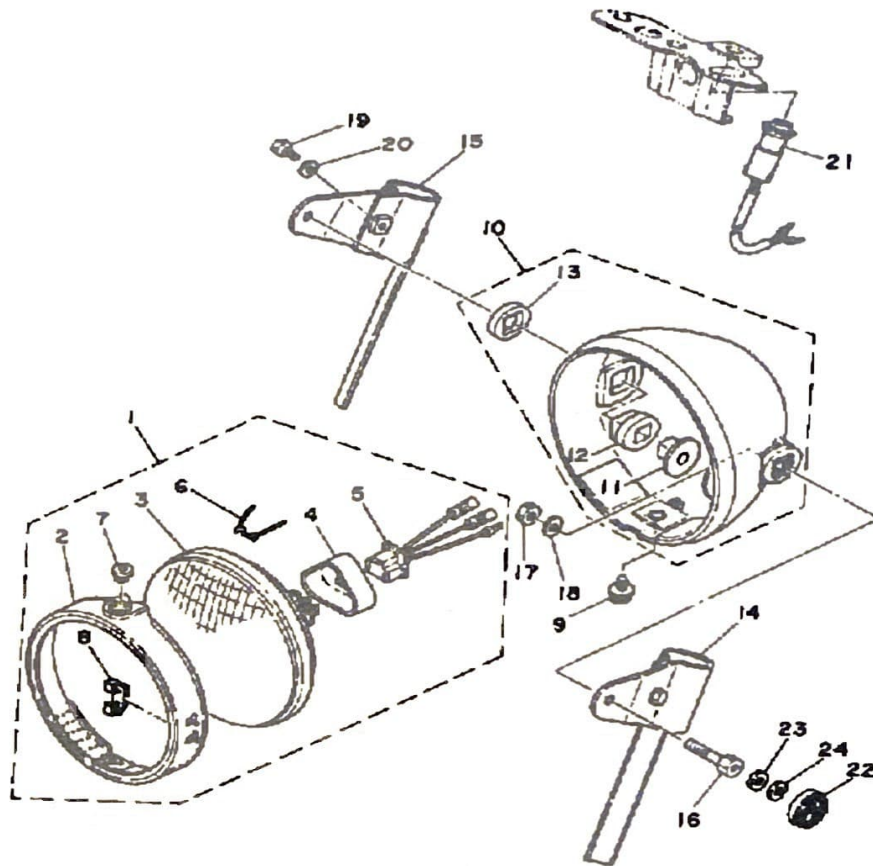
# METER

Ref. No.	Part Number	Description	Qty	Remarks
1	1T9-83519-00-98	BRACKET, METER	1	LW GLOSS BK
2	(3A3-83510-A0-00)	SPEEDOMETER ASSEMBLY	1	
3	(3A3-83520-00-00)	SOCKET CORD ASSEMBLY	1	
4	122-83516-10-00	. BULB (122-83516-10)	4	
5	(1M3-83513-00-00)	DAMPER	2	
6	355-83526-00-00	DAMPER 2	2	
7	355-83522-00-00	COLLAR	2	
8	90201-06412-00	WASHER, PLATE	2	
9	95380-06600-00	NUT	2	
10	97011-06010-00	BOLT	2	
11	92995-06100-00	WASHER, SPRING	2	
12	2A1-83550-10-00	SPEEDOMETER CABLE	1	



[www.legends-yamaha-enduros.com](http://www.legends-yamaha-enduros.com)

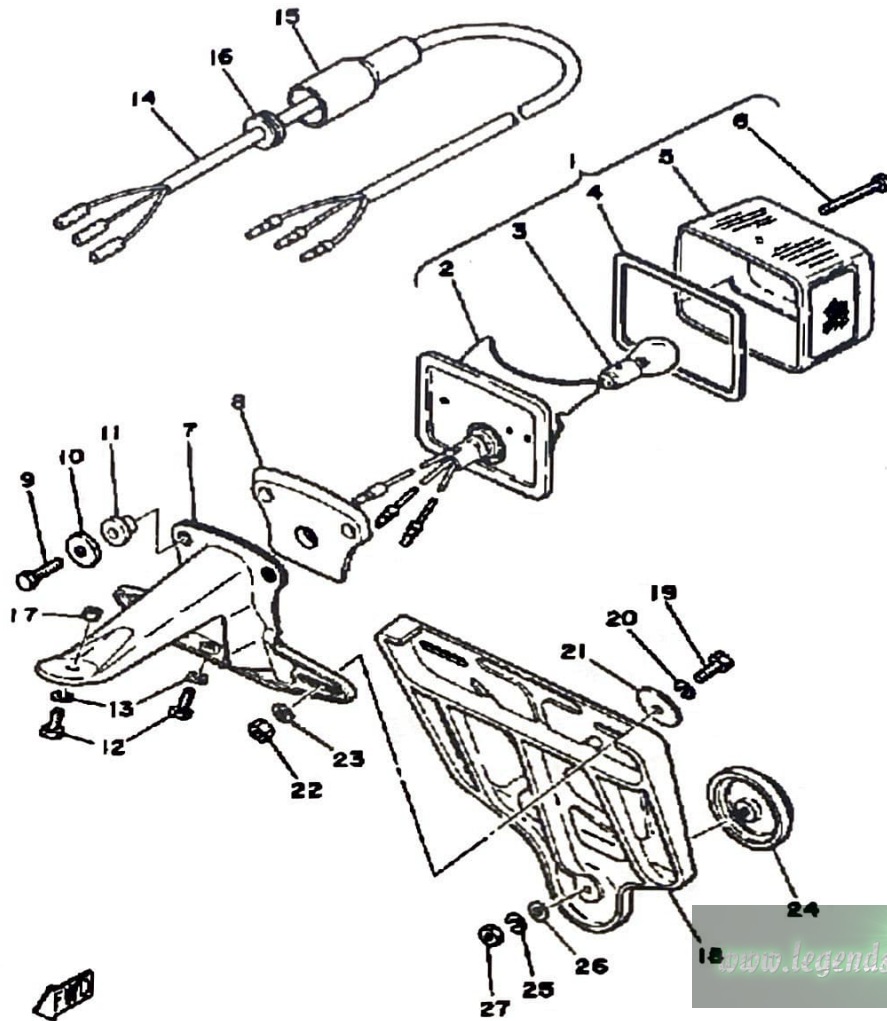
# HEADLIGHT



Ref. No.	Part Number	Description	Qty	Remarks
1	(1M1-84110-61-00)	HEADLIGHT UNIT ASSEMBLY	1	
2	1M1-84195-61-00	RING, RETAINING	1	
3	498-84120-61-00	LENS ASSEMBLY	1	
4	341-84397-61-00	COVER, SOCKET	1	
5	371-84312-60-00	SOCKET	1	
6	1M1-84124-60-00	SPRING, SET	3	
7	1M1-84133-60-00	COLLAR, SCREW	1	
8	498-84128-60-00	SPACER	1	
9	1M1-84137-60-00	BOLT, SPECIAL	1	
10	1M1-84130-60-00	BODY ASSEMBLY, HEADLIGHT (1M1-84130-60-98)	1	YAMAHA BLK
11	498-84145-60-00	COLLAR, BODY FITTING	2	
12	498-84163-60-00	DAMPER	2	
13	1M1-84164-60-00	DAMPER	2	
	1T9-84119-01-00	STAY, HEADLIGHT 2	1	
14	1T9-84118-01-00	STAY, HEADLIGHT 1	1	
16	90109-08448-00	BOLT	2	
17	95333-08600-00	NUT	2	
18	92990-08100-00	WASHER	2	
19	97013-06012-00	BOLT	2	
20	90201-061A5-00	WASHER, PLATE	2	
21	1T9-84101-60-00	PILOT LIGHT ASSEMBLY	1	
22	355-85111-01-00	REFLECTOR, FRONT 1	2	
23	92990-05200-00	WASHER, PLAIN	2	
24	92990-05100-00	WASHER, SPRING	2	

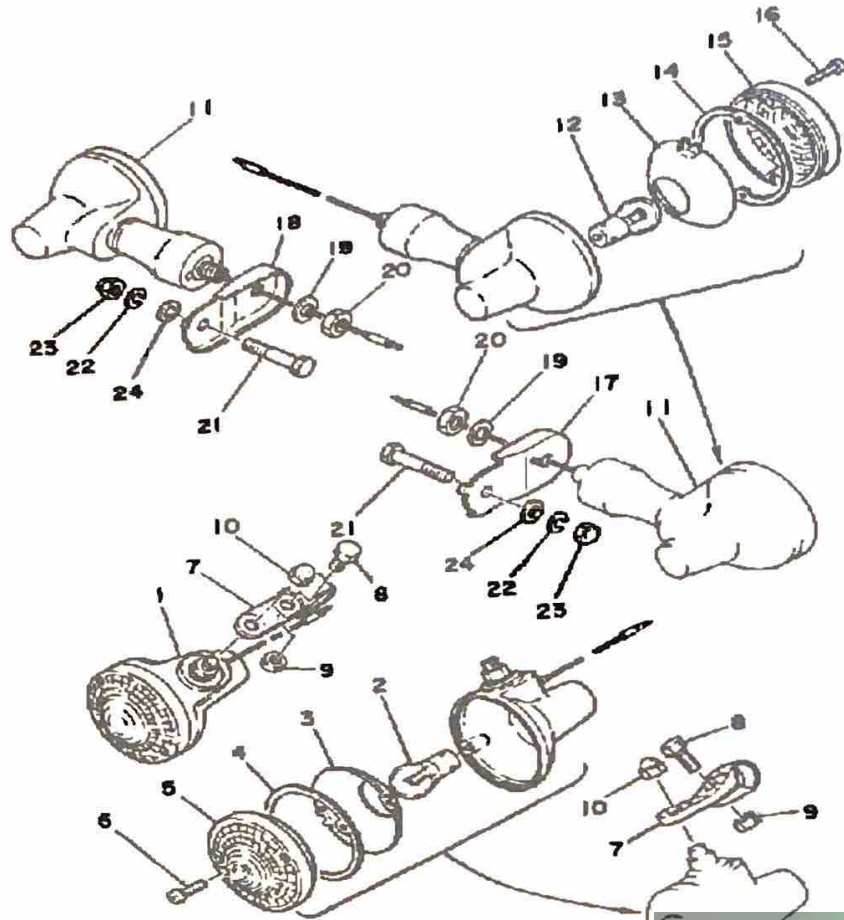
[www.legends-yamaha-enduros.com](http://www.legends-yamaha-enduros.com)

# TAILLIGHT



Ref. No.	Part Number	Description	Qty	Remarks
1	1M1-84510-60-00	TAILLIGHT UNIT ASSEMBLY	1	
2	1M1-84511-60-00	. BASE, TAILLIGHT	1	
3	1M1-84514-60-00	. BULB	1	
4	1M1-84523-60-00	. GASKET, LENS	1	
5	1M1-84521-60-00	. LENS, TAILLIGHT	1	
6	1M1-84524-60-00	. SCREW, LENS FITTING	2	
7	(1T9-84551-60-33)	BRACKET, LICENCE	1	
8	1M1-84512-60-00	SEAT, BASE	1	YAMAHA BLK
9	1M1-84526-60-00	SCREW	2	
10	2H7-84754-00-00	WASHER, SPECIAL	2	
11	1M1-84527-60-00	DAMPER	2	
12	97301-06014-00	BOLT, HEXAGON	3	
13	92995-06100-00	WASHER, SPRING	3	
14	(3A3-84517-00-00)	CORD, TAILLIGHT	1	
15	(538-82599-10-00)	COVER, CONNECTER	1	
16	90480-12529-00	GROMMET	2	
17	95380-06600-00	NUT	1	
18	1M1-85132-62-00	BRACKET, REFLECT 1	1	
19	97313-06016-00	BOLT, HEXAGON	2	
20	92995-06100-00	WASHER, SPRING	2	
21	90201-06075-00	WASHER, PLATE	2	
22	95380-06600-00	NUT	2	
23	90201-061A5-00	WASHER, PLATE	2	
24	1M1-85131-10-00	REFLECTOR, REAR 1	1	
25	92990-05100-00	WASHER, SPRING	1	
26	92990-05200-00	WASHER, PLAIN	1	
27	95380-05600-00	NUT	1	

# FLASHER LIGHT



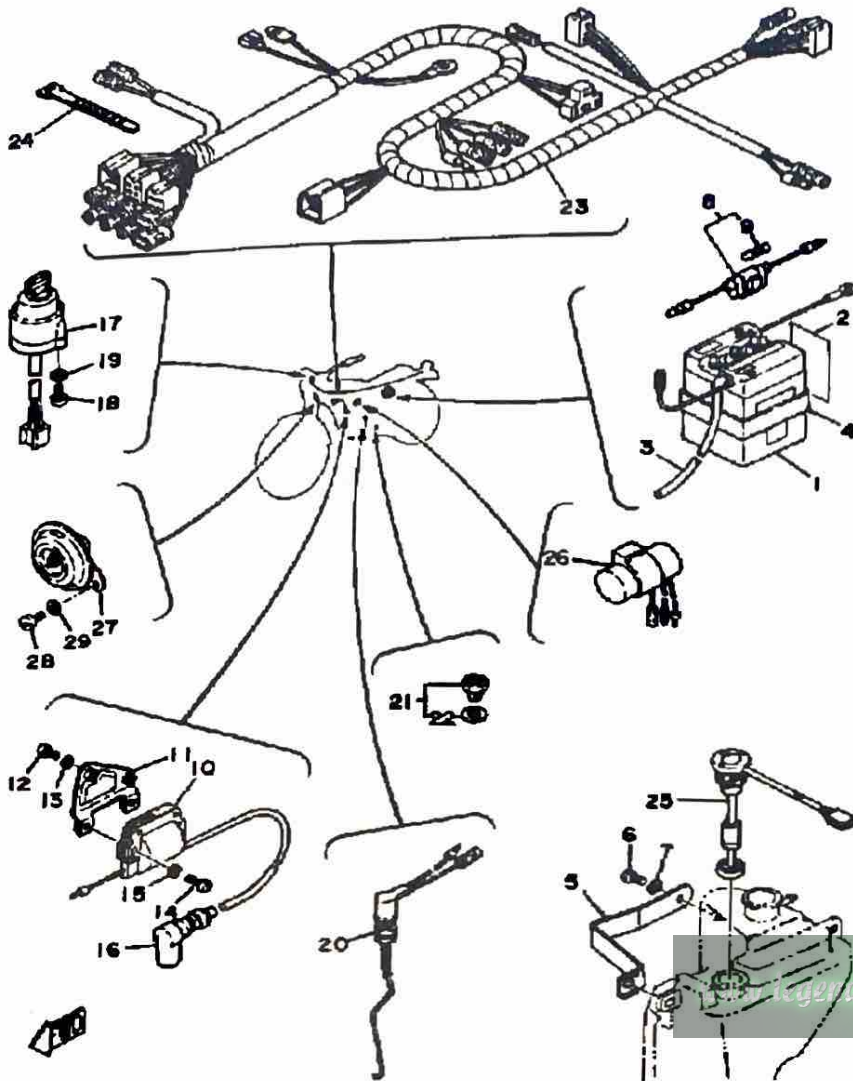
Ref. No.	Part Number	Description	Qty	Remarks
1	1M1-83310-60-00	FRT FLSHR LITE ASSEMBLY ASS'Y 1	2	
2	115-83311-60-00	. BULB, FLASHER	1	
3	1M1-83309-60-00	. REFLECTOR	1	
4	1M1-83313-60-00	. GASKET, FLSHR LENS	1	
5	341-83312-70-00	. LENS, FLASHER	1	
6	97780-30120-00	. SCREW, PANHEAD TAP	2	
7	2F5-83318-00-00	STAY, FLASHER 1	2	
8	97313-08020-00	BOLT, HEXAGON	2	
9	95333-08600-00	NUT	2	
10	95303-08800-00	NUT (CROWN) (95301-08800)	2	
11	1T9-83330-60-00	R FLSHR LITE ASSEMBLY	2	
12	115-83311-60-00	. BULB, FLASHER	1	
13	1M1-83309-60-00	. REFLECTOR	1	
14	1M1-83313-60-00	. GASKET, FLSHR LENS	1	
15	341-83312-70-00	. LENS, FLASHER	1	
16	97780-30120-00	. SCREW, PANHEAD TAP	2	
17	1T9-83368-01-00	. STAY, FLASHER	1	
18	1T9-83369-01-00	STAY, FLASHER	1	
19	92990-10100-00	WASHER, SPRING	2	
20	95303-10600-00	NUT (95301-10600)	2	
21	97313-08040-00	BOLT, HEXAGON (97322-08040)	2	
22	92990-08100-00	WASHER	2	
23	95303-08800-00	NUT (CROWN) (95301-08800)	2	
24	92901-08600-00	WASHER	2	

[www.legends-yamaha-enduros.com](http://www.legends-yamaha-enduros.com)



# ELECTRICAL 1 DT100H

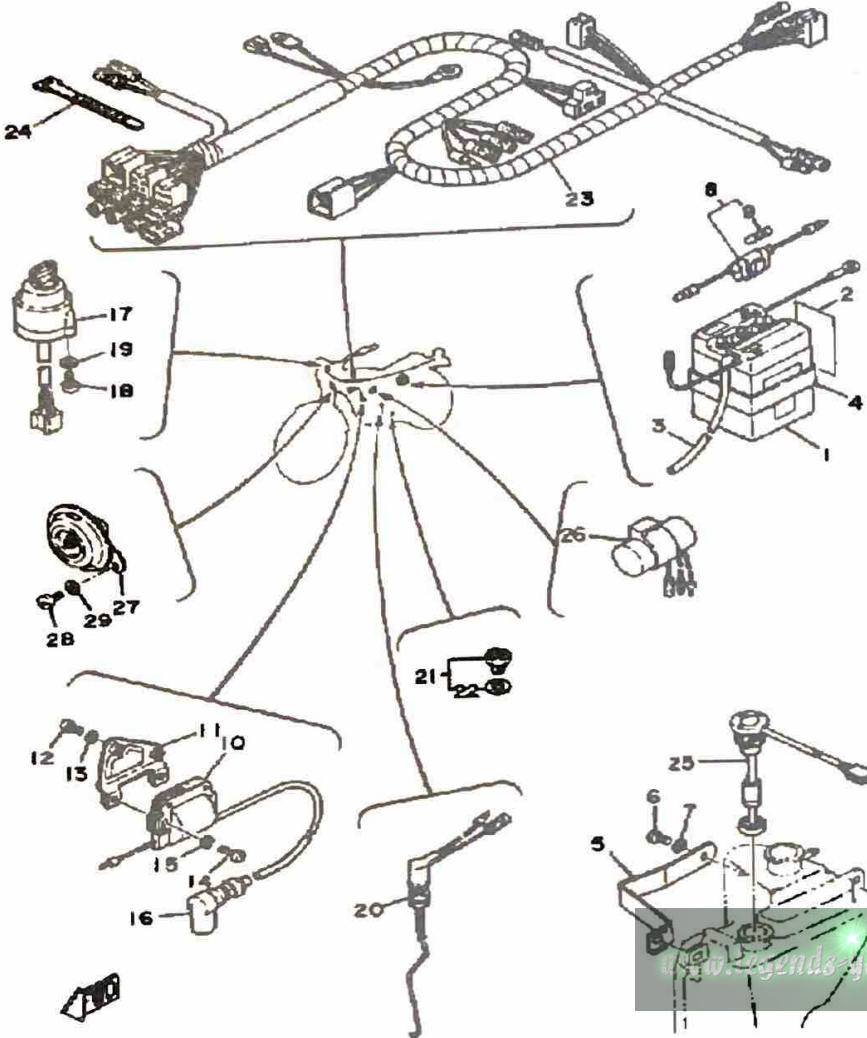
Ref. No.	Part Number	Description	Qty	Remarks
1	BTG-6N42A-20-00	GS 6N4-2A-2 (6N4-2A-2) (308-82110-10)	1	
2	118-82141-09-00	LABEL, BATTERY	1	
3	90445-08172-00	HOSE	1	
4	214-82124-00-00	BAND, BATTERY	1	
5	(1T9-82136-00-00)	PLATE, BATT FITTING	1	
6	97013-06012-00	BOLT	1	
7	92995-06100-00	WASHER, SPRING	1	
8	55K-82150-01-00	FUSE HOLDER ASS'Y (55K-82150-00-00)	1	
9	116-82151-00-00	FUSE (10A)	1	
10	5G4-82310-40-00	IGNITION COIL ASSEMBLY (J17-82310-21)	1	
11	336-82316-01-00	BRACKET, IGNITION COIL	1	
12	98580-06012-00	SCREW, PAN HEAD	2	
13	92995-06100-00	WASHER, SPRING	2	
14	98511-06025-00	SCREW PAN HEAD (92501-06025)	2	
15	92995-06100-00	WASHER, SPRING	2	
16	81E-82370-20-00	PLUG CAP ASSEMBLY	1	
	8E7-82370-11-00	PLUG CAP ASSEMBLY	1	ALT PART
17	1FE-82510-00-00	MAIN SWITCH ASSEMBLY	1	
18	98580-05012-00	SCREW, PAN HEAD	2	
19	92990-05100-00	WASHER, SPRING	2	
20	2F5-82530-02-00	STOP SWITCH ASSEMBLY	1	
21	136-82540-00-00	NEUTRAL SWITCH ASSEMBLY	1	
22	37R-82543-00-00	GASKET	1	
23	(3A3-82590-50-00)	WIRE HARNESS ASSEMBLY	1	
24	25G-83936-01-00	BAND, SWITCH CORD	1	
25	1T9-85720-01-00	OIL LVL GAUGE ASSEMBLY	1	



CONTINUED ON NEXT FRAME ►



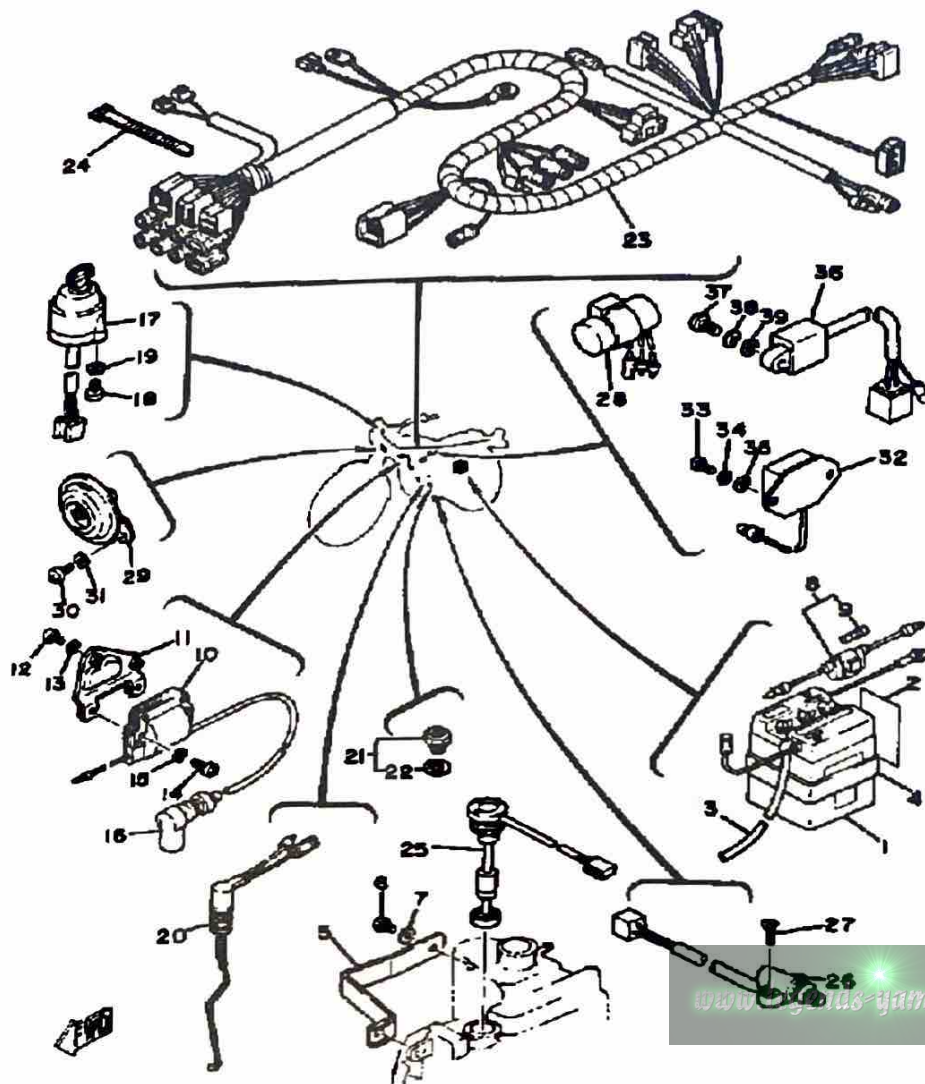
# ELECTRICAL 1 DT100H



Ref. No.	Part Number	Description	Qty	Remarks
26	542-83350-60-00	FLASHER RELAY ASSEMBLY	1	
27	2A7-83371-10-00	HORN	1	
28	97013-06012-00	BOLT	2	
29	92995-06100-00	WASHER, SPRING	2	

[www.legends-yamaha-enduros.com](http://www.legends-yamaha-enduros.com)

# ELECTRICAL 1 DT100J

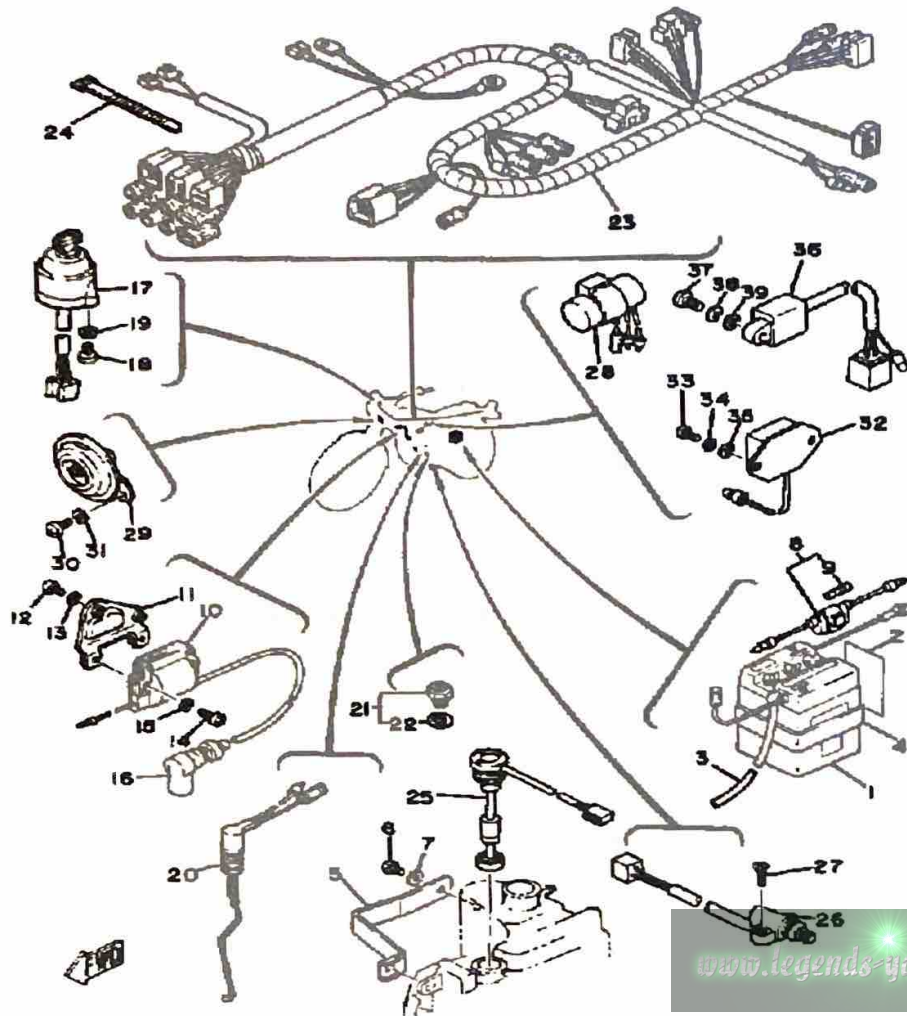


Ref. No.	Part Number	Description	Qty	Remarks
1	BTG-6N42A-20-00	GS 6N4-2A-2 (6N4-2A-2) (308-82110-10)	1	
2	118-82141-09-00	LABEL, BATTERY	1	
3	90445-08172-00	HOSE	1	
4	214-82124-00-00	BAND, BATTERY	1	
5	(1T9-82136-00-00)	PLATE, BATT FITTING	1	
6	97013-06012-00	BOLT	1	
7	92995-06100-00	WASHER, SPRING	1	
8	55K-82150-01-00	FUSE HOLDER ASS'Y (55K-82150-00-00)	1	
9	116-82151-00-00	FUSE (10A)	1	
10	5G4-82310-40-00	IGNITION COIL ASSEMBLY (J17-82310-21)	1	
11	336-82316-01-00	BRACKET, IGNITION COIL	1	
12	98580-06012-00	SCREW, PAN HEAD	2	
13	92995-06100-00	WASHER, SPRING	2	
14	98511-06025-00	SCREW PAN HEAD (92501-06025)	2	
15	92995-06100-00	WASHER, SPRING	2	
16	81E-82370-20-00	PLUG CAP ASSEMBLY	1	
	8E7-82370-11-00	PLUG CAP ASSEMBLY	1	W/NOISE SUPPRESSOR
17	1FE-82510-00-00	MAIN SWITCH ASSEMBLY	1	
18	98580-05012-00	SCREW, PAN HEAD	2	
19	92990-05100-00	WASHER, SPRING	2	
20	2F5-82530-02-00	STOP SWITCH ASSEMBLY	1	
21	136-82540-00-00	NEUTRAL SWITCH ASSEMBLY	1	
22	37R-82543-00-00	GASKET	1	
23	(3A3-82590-51-00)	WIRE HARNESS ASSEMBLY	1	
24	25G-83936-01-00	BAND, SWITCH CORD	1	

CONTINUED ON NEXT FRAME ►

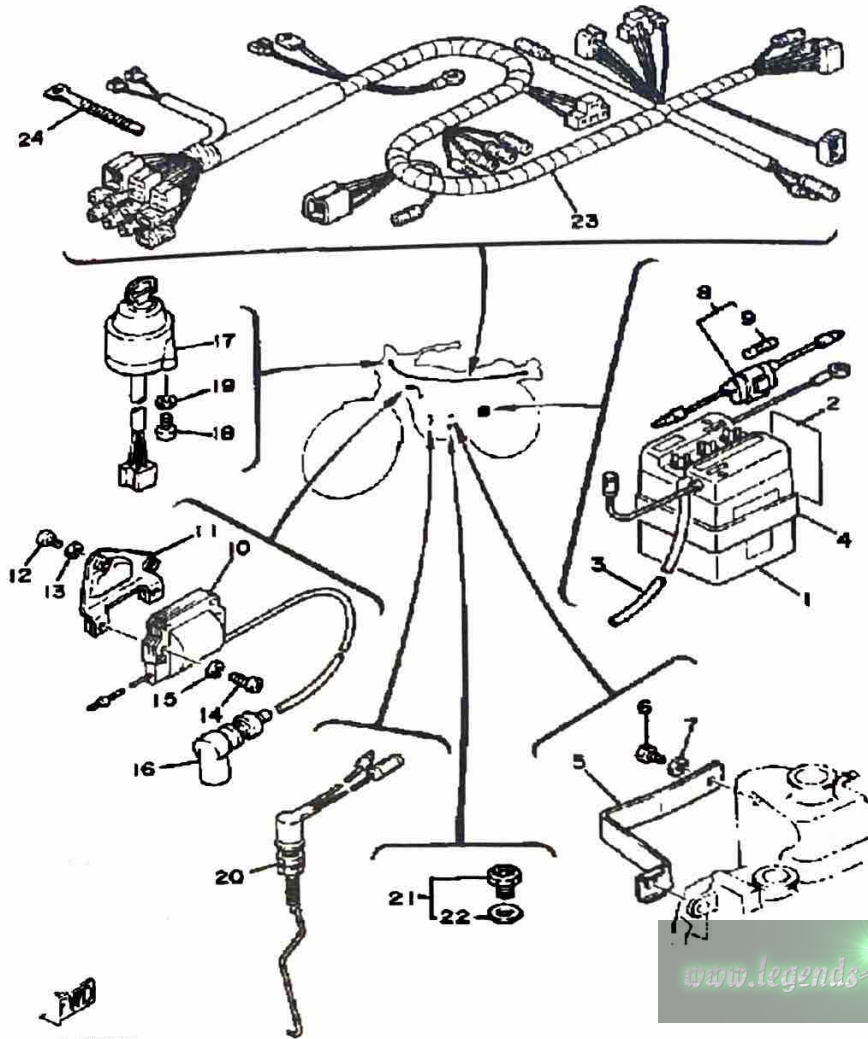
# ELECTRICAL 1 DT100J

Ref. No.	Part Number	Description	Qty	Remarks
25	1T9-85720-01-00	OIL LVL GAUGE ASSEMBLY ..	1	
26	3J8-82566-01-00	SWITCH, SIDE STAND .....	1	
27	98706-05016-00	SCREW, FLAT HEAD .....	2	
28	542-83350-60-00	FLASHER RELAY ASSEMBLY ..	1	
29	2A7-83371-10-00	HORN .....	1	
30	97013-06012-00	BOLT .....	2	
31	92995-06100-00	WASHER, SPRING .....	2	
32	443-81910-62-00	VOLTAGE REG ASSEMBLY (498-81910-23) .....	1	
33	98580-06012-00	SCREW, PAN HEAD .....	2	
34	92995-06100-00	WASHER, SPRING .....	2	
35	90201-061A5-00	WASHER, PLATE .....	2	
36	3Y1-85590-M0-00	CONTROL UNIT ASSEMBLY ..	1	
37	98580-06020-00	SCREW .....	1	
38	92995-06100-00	WASHER, SPRING .....	1	
39	90201-061A5-00	WASHER, PLATE .....	1	



[www.legends-yamaha-enduros.com](http://www.legends-yamaha-enduros.com)

# ELECTRICAL 1 DT100K

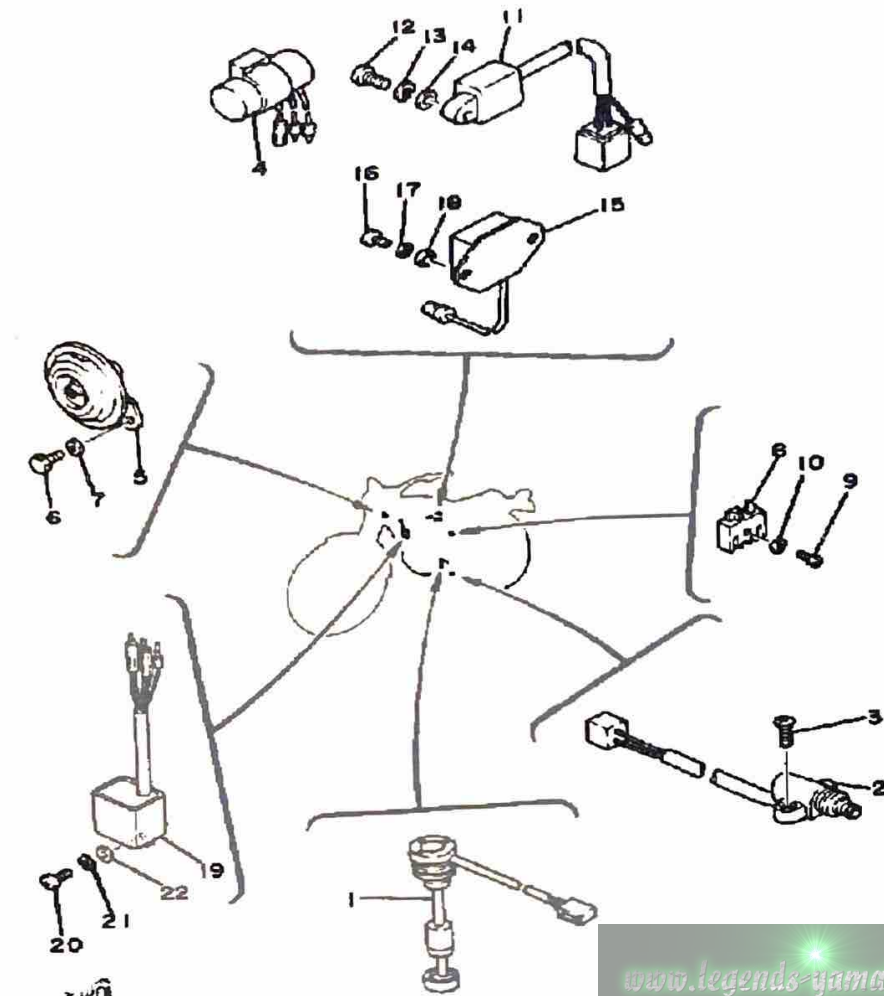


3A3110-3320

Ref. No.	Part Number	Description	Qty	Remarks
1	BTG-6N42A-20-00	GS 6N4-2A-2 (6N4-2A-2) (308-82110-10)	1	
2	118-82141-09-00	LABEL, BATTERY	1	
3	90445-08172-00	HOSE	1	
4	214-82124-00-00	BAND, BATTERY	1	
5	(1T9-82136-00-00)	PLATE, BATT FITTING	1	
6	97013-06012-00	BOLT	1	
7	92995-06100-00	WASHER, SPRING	1	
8	55K-82150-01-00	FUSE HOLDER ASS'Y (55K-82150-00-00)	1	
9	116-82151-00-00	FUSE (10A)	1	
10	5G4-82310-40-00	IGNITION COIL ASSEMBLY (J17-82310-21)	1	
11	336-82316-01-00	BRACKET, IGNITION COIL	1	
12	98580-06012-00	SCREW, PAN HEAD	2	
13	92995-06100-00	WASHER, SPRING	2	
14	98511-06025-00	SCREW PAN HEAD (92501-06025)	2	
15	92995-06100-00	WASHER, SPRING	2	
16	81E-82370-20-00	PLUG CAP ASSEMBLY	1	
	8E7-82370-11-00	PLUG CAP ASSEMBLY	1	W/NOISE SUPPRESSOR
17	1FE-82510-00-00	MAIN SWITCH ASSEMBLY	1	
18	98580-05012-00	SCREW, PAN HEAD	2	
19	92990-05100-00	WASHER, SPRING	2	
20	2F5-82530-02-00	STOP SWITCH ASSEMBLY	1	
21	136-82540-00-00	NEUTRAL SWITCH ASSEMBLY	1	
22	37R-82543-00-00	GASKET	1	
23	(3A3-82590-51-00)	WIRE HARNESS ASSEMBLY	1	
24	25G-83936-01-00	BAND, SWITCH CORD	1	

# ELECTRICAL 2 DT100K

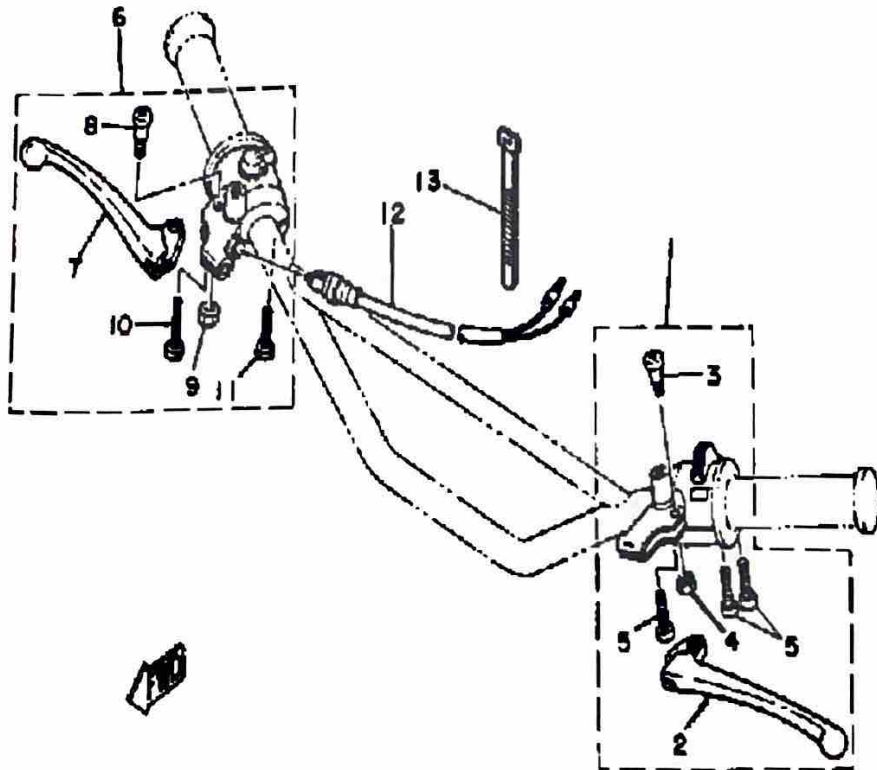
Ref. No.	Part Number	Description	Qty	Remarks
1	1T9-85720-01-00	OIL LVL GAUGE ASSEMBLY ...	1	
2	3A3-82566-10-00	SWITCH, SIDE STAND .....	1	
3	98706-05016-00	SCREW, FLAT HEAD .....	2	
4	542-83350-60-00	FLASHER RELAY ASSEMBLY .	1	
5	2A7-83371-10-00	HORN .....	1	
6	97013-06012-00	BOLT .....	2	
7	92995-06100-00	WASHER, SPRING .....	2	
8	353-81970-63-00	RECTIFIER ASSEMBLY .....	1	
9	98501-05018-00	SCREW, PAN HEAD .....	1	
10	92990-05100-00	WASHER, SPRING .....	1	
11	3A3-85540-20-00	CDI UNIT ASSEMBLY .....	1	
12	98503-06014-00	SCREW, PAN HEAD (92502-06016) .....	1	
13	92995-06100-00	WASHER, SPRING .....	1	
14	90201-061A5-00	WASHER, PLATE .....	1	
15	443-81910-62-00	VOLTAGE REG ASSEMBLY (498-81910-23) .....	1	
16	98580-06012-00	SCREW, PAN HEAD .....	2	
17	92995-06100-00	WASHER, SPRING .....	2	
18	90201-061A5-00	WASHER, PLATE .....	2	
19	4Y3-85590-M0-00	CONTROL UNIT ASSEMBLY ..	1	
20	98580-06020-00	SCREW .....	1	
21	92995-06100-00	WASHER, SPRING .....	1	
22	90201-061A5-00	WASHER, PLATE .....	1	



3A3110-3330

[www.legends-yamaha-enduros.com](http://www.legends-yamaha-enduros.com)

# HANDLE SWITCH-LEVER



Ref. No.	Part Number	Description	Qty	Remarks
1	3A3-82910-00-00	LEVER HOLDER ASSEMBLY 1	1	
2	137-83912-02-38	. LEVER L	1	CLEAR BUFFING
3	90149-05120-00	. SCREW, SPEC"L SHAPE	1	
4	95601-05100-00	. NUT, U	1	
5	90157-05027-00	. SCREW, PAN HEAD	3	
	98580-05020-00	. SCREW, PAN HEAD	3	
6	(1T9-W8292-51-00)	LEVER HOLDER ASSEMBLY R	1	
	1T9-82920-X0-00	. LEVER HOLDER ASSEMBLY 2	1	
7	2N3-83922-00-00	. LEVER R	1	
8	90149-05120-00	. SCREW, SPEC"L SHAPE	1	
9	95601-05100-00	. NUT, U	1	
10	98501-05030-00	. SCREW, PAN HEAD	1	
11	90157-05027-00	. SCREW, PAN HEAD	1	
	98580-05020-00	. SCREW, PAN HEAD	1	
12	395-83980-00-00	. STOP SWITCH ASSEMBLY	1	
13	437-83936-01-00	. BAND, SWITCH CORD	2	

[www.legends-yamaha-enduros.com](http://www.legends-yamaha-enduros.com)

## DT100H 1981 SERVICE DATA

MODEL - IBM I.D. NUMBER	DT100H	3A3
Initial Engine Number / Frame Number	3A3-040101 / 3A3-040101	
Basic Color(s)	Crystal Silver	
Fuel Type / Fuel Tank Capacity / Reserve Capacity	Regular / 4.5 Lt. (1.2 Gal.) / 0.3 Lt. (0.07 Gal.)	
Dry Vehicle Weight	80 kg (176 lbs.)	
<b>ENGINE TYPE</b>	2-Stroke, Air-Cooled, Reed Valve	
Bore/Stroke/Number Cylinders/Displacement (cc)	52mm / 45.6mm / 1 / 87cc	
Compression Ratio/Compression Pressure Min~Max	9.7:1 (6.7:1 Connected) / $\emptyset$	
Piston Skirt Clearance New / Max	0.035 ~ 0.040mm / 0.1mm	
Ring End Gap Top / 2nd / 3rd	0.15 ~ 0.35mm / 0.15 ~ 0.35mm / $\emptyset$	
Valve Clearance (Cold) Intake / Exhaust	$\emptyset$	
Oil Pressure Hot / rpm	$\emptyset$	
Oiling System	Autolube	
Capacity: Dry	1.0 Lt. (1.1 Qt.)	
Oil and Filter Change	$\emptyset$	
Oil Change	$\emptyset$	
Lubricant: Temp. Above 5°C (40°F)	Yamalube 2* or Equivalent	
Temp. Below 15°C (60°F)	Yamalube 2* or Equivalent	
<b>AUTOLUBE - Min Stroke / Color Code</b>	0.2 ~ 0.25mm / Green	
Minimum Output @ 200 Cycles	0.50 ~ 0.53cc	
Maximum Output @ 200 Cycles	4.65 ~ 5.15cc	
<b>CARBURETOR - Mfr. / Type / I.D. Number</b>	Mikuni / VM20SS / 3A3-60	
Main Jet / Pilot Jet	130 / 15	
Needle Jet / Jet Needle-Clip Position	0-6 / 4L17 Fixed	
Slide Cutaway or Throttle Valve	2.0	
Floet Level / Fuel Level	21 ± 0.5mm / NA	
Idle rpm	1300 ~ 1460 rpm	
Max CO* / Max HC* / Set CO	$\emptyset$	
<b>SUSPENSION</b>		
Front Forks: Oil Type / Level / Qty	10 Wt. Fork Oil* / $\emptyset$ / 116cc ± 2cc	
Gas Pressure	$\emptyset$	
Spring Length Std	418.5mm (16.48")	
Monoshock: Oil Type / Qty	$\emptyset$	
Gas Pressure	$\emptyset$	
Minimum Brake Lining Thickness	Front: 2mm Rear: 2mm	
Tire Size (Nominal Pressure)	F2.25 (1.8 kg/cm <sup>2</sup> /22 psi) R3.00-18 (2.8 kg/cm <sup>2</sup> /28 psi)	
<b>TRANSMISSION - Oil Type/Qty Chg/Qty Reassemble</b>	Yamalube 4* or SAE 10W30 SE / 550cc / 650cc	
Primary Drive Type / Teeth / Ratio	Helical Gear / 74-19 / 3.895	
Secondary Drive Type / Teeth / Chain	Chain / 45-14 / RS420-102L	
Clutch Friction Plate Thickness Std ~ Min	3.0 ~ 2.7mm	
Clutch Spring Length Std ~ Min	31.5 ~ 30.5mm	
Middle Gear Case Capacity	$\emptyset$	
Final Gear Case Capacity	$\emptyset$	
Gear Case Lubricant: Temp. Above 5°C (40°F)	$\emptyset$	
Temp. Below 15°C (60°F)	$\emptyset$	
All Weather Conditions	$\emptyset$	

<b>CHARGING SYSTEM</b>	
Battery: Model / Specific Gravity / Charge Rate	Flywheel Magneto / Single Phase / Half Wave
Maximum Output	GS 6N4-2A-2 / 1.26 / 0.4A
<b>TROUBLESHOOTING</b>	7.5V 3.5A @ 8000 rpm
Field Coil Color Code / $\Omega$	$\emptyset$
Charge Coil Color Code / $\Omega$	$\emptyset$
<b>IGNITION SYSTEM</b>	Gm-Red ~ Blk / 0.32 $\Omega$ ± 10%
Ignition Timing	Capacitor-Discharge Ignition
	21° BTDC @ 2000 rpm
	1.8mm BTDC
Spark Plug Type	NGK B7ES
Spark Plug Gap / Torque / Cap $\Omega$	0.6 ~ 0.8mm / 2.5 m·kg / 5K $\Omega$ ± 10%
Point Gap / Condenser Capacitance	$\emptyset$ / $\emptyset$
<b>TROUBLESHOOTING</b>	
Ignition Coil Test Gap / Primary $\Omega$ / Secondary $\Omega$	6mm / 1.0 $\Omega$ ± 10% / 5.9K $\Omega$ ± 20%
Pulser Coil or Pickup Coil Color Code / $\Omega$	Wht ~ Blk / 10 $\Omega$ ± 10%
Source Coil Color Code / $\Omega$	Br ~ Gnd / 300 $\Omega$ ± 10%
<b>LIGHTING SYSTEM</b>	
Headlight / Taillight / Signal Rating	6V30-30W / 6V25W-5.3W / 6V17W
<b>TROUBLESHOOTING</b>	
Lighting Coil Color Code / $\Omega$	Yel-Blk / 2.2 $\Omega$ ± 10%
<b>TORQUE VALUES</b>	
Front Axle Nut	12 x 1.25: 4.5 m·kg
Front Axle Holder Nut	$\emptyset$
Rear Axle Nut	10 x 1.00: 4.0 m·kg
Rear Axle Pinch Bolt	$\emptyset$
Clutch Nut	12 x 1.0: 5.0 m·kg
Drain Plug	12 x 1.5: 2.5 m·kg
Cylinder Head Cover	$\emptyset$
Cylinder Head:	8 x 1.25: 2.5 m·kg
Engine Mounting Bolts: Front, Upper	8 x 1.25: 2.5 m·kg
Rear, Upper	8 x 1.25: 2.5 m·kg
Rear, Lower	10 x 1.25: 4.0 m·kg

$\emptyset$  = Does Not Apply To This Model  
NA = Information Not Available

\*Available From Yamaha Parts Distributors Inc.  
\*For Diagnostic Use Only

SERVICE COPY	SER MGR	MECH	MECH	MECH	BINDER
OFFICE COPY	GEN MGR	SALES	PARTS	BINDER	PAGE 1 OF 2

PAGE 2 OF 2

D-21

FILE MOTORCYCLE - 100 SECTION

DATE 10/23/81

BLK M81-043

## DT100J 1982 SERVICE DATA

MODEL - INT'L ID. NUMBER	DT100J	3A3
Initial Engine Number / Frame Number	3A3-070101 / 3A3-070101	
Basic Color(s)	Crystal Silver	
Fuel Type / Fuel Tank Capacity / Reserve Capacity	Regular / 4.5 Lit. / 0.3 Lit.	
Dry Vehicle Weight	80 kg	
<b>ENGINE TYPE</b>	2-Stroke, Air-Cooled, Reed Valve	
Bore/Stroke/Number Cylinders/Displacement (cc)	52mm / 45.6mm / 1 / 97cc	
Compression Ratio/Compression Pressure Min~Max	6.7:1 / #	
Piston Skirt Clearance New ~ Max	0.035 ~ 0.040mm / 0.1mm	
Ring End Gap Top / 2nd / 3rd	0.15 ~ 0.35mm / 0.15 ~ 0.35mm / #	
Valve Clearance (Cold) Intake / Exhaust	#	
Oil Pressure Hot / rpm	#	
Oiling System	Autolube	
Capacity: Dry	4.0 Lit.	
Oil and Filter Change	#	
Oil Change	#	
Lubricant: Temp. Above 5°C (40°F)	Yamalube 2* or Equivalent	
Temp. Below 15°C (60°F)	Yamalube 2* or Equivalent	
<b>VALVE LUBE - Min Stroke / Color Code</b>	0.20 ~ 0.25mm / Green	
Minimum Output @ 200 Cycles	0.50cc	
Maximum Output @ 200 Cycles	5.15cc	
<b>CARBURETOR - Mir. / Type / I.D. Number</b>	Mikuni / VM20SS / 3A3-60	
Main Jet / Pilot Jet	130 / 15	
Needle Jet / Jet Needle-Clip Position	0-6 / 4L17 Fixed	
Slide Cutaway or Throttle Valve	2.0	
Float Level / Fuel Level	21 ± 1.0mm / NA	
Idle rpm	1300 ~ 1450 rpm	
Max CO* / Max HC* / Set CO	#	
<b>SUSPENSION</b>		
Front Forks: Oil Type / Level / Qty	10 Wt. Fork Oil* / # / 116cc ± 2cc	
Gas Pressure	#	
Spring Length Std	418.5mm	
Monoshock: Oil Type / Qty	#	
Gas Pressure	#	
Minimum Brake Lining Thickness	Front: 2mm Rear: 2mm	
Tire Size (Nominal Pressure)	F: 2.50-18 (1.6 kg/cm <sup>2</sup> ) R: 3.00-16 (2.0 kg/cm <sup>2</sup> )	
<b>TRANSMISSION - Oil Type/Qty Chg/Qty Reassemble</b>	Yamalube 4* or SAE 10W30 SE / 600cc / 650cc	
Primary Drive Type / Teeth / Ratio	Helical Gear / 74-19 / 3.895	
Secondary Drive Type / Teeth / Chain	Chain / 45-14 / RS420-102L	
Clutch Friction Plate Thickness Std ~ Min	3.0 ~ 2.7mm	
Clutch Spring Length Std ~ Min	31.5 ~ 30.5mm	
Middle Gear Case Capacity	#	
Final Gear Case Capacity	#	
Gear Case Lubricant: Temp. Above 5°C (40°F)	#	
Temp. Below 15°C (60°F)	#	
All Weather Conditions	#	

SERVICE COPY	SER MGR	MECH	MECH	MECH	BINDER
OFFICE COPY	GEN MGR	SALES	PARTS	BINDER	PAGE 1 OF 2

FILE MOTORCYCLE - 100 SECTION

DATE 10/23/81

BLK M81-043

<b>CHARGING SYSTEM</b>	
Battery Model / Specific Gravity / Charge Rate	Flywheel Magneto / Single Phase / Half Wave
Maximum Output	GS 6N4-2A-2 / 1.25 / 0.4A
<b>TROUBLESHOOTING</b>	7.5V 3.5A @ 8000 rpm
Field Coil Color Code / ID	#
Charge Coil Color Code / ID	Grn-Red ~ Blk / 0.32 ID ± 10%
<b>IGNITION SYSTEM</b>	Capacitor-Discharge Ignition
Ignition Timing	21° BTDC @ 2000 rpm
	1.8mm BTDC
Spark Plug Type	NGK B7ES
Spark Plug Gap / Torque / Cap ID	0.6 ~ 0.8mm / 2.5 m·kg / 5K ID ± 10%
Point Gap / Condenser Capacitance	# / #
<b>TROUBLESHOOTING</b>	
Ignition Coil Test Gap / Primary ID / Secondary ID	6mm / 1.0 ID ± 10% / 5.9K ID ± 20%
Pulser Coil or Pickup Coil Color Code / ID	Whi-Red ~ Blk / 1.0 ID ± 10%
Source Coil Color Code / ID	Brn ~ Gnd / 300 ID ± 10%
<b>LIGHTING SYSTEM</b>	
Headlight / Taillight / Signal Rating	6V30-30W / 6V25W-5.3W / 6V17W
<b>TROUBLESHOOTING</b>	
Lighting Coil Color Code / ID	Yel-Blk / 2.2 ID ± 10%
<b>TORQUE VALUES</b>	
Front Axle Nut	12 x 1.25: 4.3 m·kg
Front Axle Holder Nut	#
Rear Axle Nut	10 x 1.00: 4.0 m·kg
Rear Axle Pinch Bolt	#
Clutch Nut	12 x 1.0: 5.0 m·kg
Drain Plug	12 x 1.5: 2.5 m·kg
Cylinder Head Cover	#
Cylinder Head:	8 x 1.25: 2.5 m·kg
Engine Mounting Bolts: Front, Upper	8 x 1.25: 2.6 m·kg
Rear, Upper	8 x 1.25: 2.6 m·kg
Rear, Lower	10 x 1.25: 3.9 m·kg

# = Does Not Apply To This Model  
NA = Information Not Available

\*Available From Yamaha Parts Distributors Inc.  
\*For Diagnostic Use Only

**SERVICE LITERATURE**

PUBLICATION	PART NUMBER	REMARKS
Owner's Manual	LIT-11626-03-04	
Service Manual	LIT-11616-DT-1	Same as DT100G, H
Assembly Manual	LIT-11666-01-67	Same as DT100G, Supp. to DT100E (01-02)
Consumer Information	LIT-11666-03-04	

PAGE 2 OF 2



<b>CHARGE SYSTEM</b>		Flywheel Magneto / Single Phase / Half Wave
Battery Model / Specific Gravity / Charge Rate		GS 6N4-2A-2 / 1.26 / 0.4A
Maximum Output		7.5V 3.5A @ 8000 rpm
<b>TROUBLESHOOTING</b>		
Field Coil Color Code / Ω		Ø
Charge Coil Color Code / Ω		Grn-Red ~ Blk / 0.32 Ω ± 10%
<b>IGNITION SYSTEM</b>		Capacitor-Discharge Ignition
Ignition Timing		21° BTDC @ 2000 rpm
		1.8mm BTDC
Spark Plug Type		NGK B7ES
Spark Plug Gap / Torque / Cap Ω		0.6 ~ 0.8mm / 2.5 m·kg / 5K Ω ± 10%
Point Gap / Condenser Capacitance		Ø / Ø
<b>TROUBLESHOOTING</b>		
Ignition Coil Test Gap / Primary Ω / Secondary Ω		6mm / 1.0 Ω ± 10% / 5.9K Ω ± 20%
Pulser Coil or Pickup Coil Color Code / Ω		Whi-Red ~ Blk / 10 Ω ± 10%
Source Coil Color Code / Ω		Brn ~ Grnd / 300 Ω ± 10%
<b>LIGHTING SYSTEM</b>		6V30-30W / 6V25W-5.3W / 6V17W
Headlight / Taillight / Signal Rating		
<b>TROUBLESHOOTING</b>		
Lighting Coil Color Code / Ω		Yel-Blk / 2.2 Ω ± 10%
<b>TORQUE VALUES</b>		
Front Axle Nut		12 x 1.25: 4.3 m·kg
Front Axle Holder Nut		Ø
Rear Axle Nut		10 x 1.00: 4.0 m·kg
Rear Axle Pinch Bolt		Ø
Clutch Nut		12 x 1.0: 5.0 m·kg
Drain Plug		12 x 1.5: 2.5 m·kg
Cylinder Head Cover		Ø
Cylinder Head:		8 x 1.25: 2.5 m·kg
Engine Mounting Bolt: Front, Upper		8 x 1.25: 2.6 m·kg
Rear, Upper		8 x 1.25: 2.6 m·kg
Rear, Lower		10 x 1.25: 3.9 m·kg

Ø = Does Not Apply to This Model  
 NA = Information Not Available

\* Available From Yamaha Parts Distributors Inc.  
 \* For Diagnostic Use Only

**SERVICE LITERATURE**

PUBLICATION	PART NUMBER	REMARKS
Owner's Manual	LT-11626-03-04	Same as DT100G, H Same as DT100G, Supp. to DT100E (01-02)
Service Manual	LT-11616-DT-1	
Assembly Manual	LT-11666-01-67	
Consumer Information	LT-11656-03-04	



[www.legends-yamaha-enduros.com](http://www.legends-yamaha-enduros.com)