



# YAMAHA

## PARTS CATALOGUE

**WR250ZD** (4DC1)

**WR250Z'92** (4DC1)

ALL

| 24DC-100E1

A2

[www.legends-yamaha-enduro.com](http://www.legends-yamaha-enduro.com)

*Faint, illegible handwritten text.*



**A3**

# FOREWORD

This Parts Catalogue is related to the parts in use for the Yamaha WR250ZD/WR250Z'92 (4DC1). When you are ordering replacement parts for the WR250ZD/WR250Z'92(4DC1), refer to this Parts Catalogue and quote both part numbers and part names correctly.

1. Modifications or additions which have been made after issue of the Parts Catalogue will be announced in the Yamaha Parts News.

It is advisable that according to the Yamaha Parts News you make necessary corrections to the Parts Catalogue on hand to keep it up-to-date.

2. Abbreviations

The following abbreviations are used in this Parts Catalogue.

- U.R. Use size (thickness) and/or number as required.
- U.N. Use as many as you need.
- A.P. Alternate Parts
- L.M. Local Made
- F# Frame No. (Applicable machine No.)

3. The parts marked with (\*) in the parts number column of this Catalogue are not supplied with by Yamaha, those have to be found locally.

4. Parts, which are to be supplied in the form of assemblies, are listed with an indention of one letter's space, and a dot ( . ) is put against the name of each part.

**EXAMPLE** CARBURETOR ASS'Y  
 . JET, pilot  
 . NOZZLE, main

5. Indication of No. of constituent parts for assembly

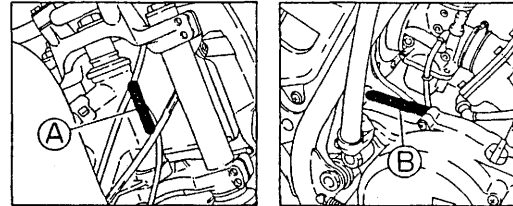
The numeral appearing to the right of each constituent part under the description indicates the quantity of such parts for each individual assembly unit.

**EXAMPLE**

Part No.	Description	Q'ty	Remarks
2F5-83310-60	FRONT FLASHER LIGHT ASS'Y	2	
115-83311-60	. BULB (6V-18W)	1	
1M1-83309-60	. REFLECTOR	1	

6. Initial Serial No. and Color Code

(A) Frame Serial No.	4DC-000101 and following
(B) Engine Serial No.	4DC-000101 and following



Color Code	Color Name	Abbreviate
0206	PURPLISH WHITE SOLID 1	PWS1

7. Applicable colors of graphics are represented in the "Remarks" column by the letter(s) appropriately picked out of the full word(s) showing such colors.

**EXAMPLE**

Part No.	Description	Q'ty	Remarks
2N4-24110-00-X5	FUEL TANK COMP.	1	MAXIM RED
3J1-24240-10	. GRAPHIC, fuel tank set	1	for MXR

# CONTENTS

## ENGINE

Cylinder Head .....	B2 ~ B3
Governor .....	B4
Crankshaft. Piston .....	B5
Water Pump .....	B6
Radiator. Hose .....	B7
Intake .....	B8
Carburetor .....	B9 ~ B10
Exhaust .....	B11
Crankcase .....	B12
Crankcase Cover 1 .....	B13
Starter .....	B14
Clutch .....	B15
Transmission .....	C2 ~ C3
Shift Cam. Fork .....	C4
Shifter .....	C5

## CHASSIS

Frame .....	C6 ~ C7
Fender .....	C8
Side Cover .....	C9 ~ C10
Rear Arm .....	C11 ~ C12
Rear Suspension .....	C13
Steering .....	C14
Front Fork .....	C15 ~ D3
Fuel Tank .....	D4
Seat .....	D5
Front Wheel .....	D6
Front Brake Caliper .....	D7
Rear Wheel .....	D8 ~ D9

Rear Brake Caliper .....	D10
Steering Handle. Cable .....	D11
Front Master Cylinder .....	D12
Stand. Footrest .....	D13
Rear Master Cylinder .....	D14
Generator .....	D15
Handle Switch. Lever .....	E2
Electrical 1 .....	E3

## ALTERNATE PARTS

Alternate (Chassis) .....	E4
---------------------------	----

## REPAIR KIT

Repair Kit .....	E5
------------------	----

## INDEX

Numerical Index .....	M1 ~ M3
-----------------------	---------

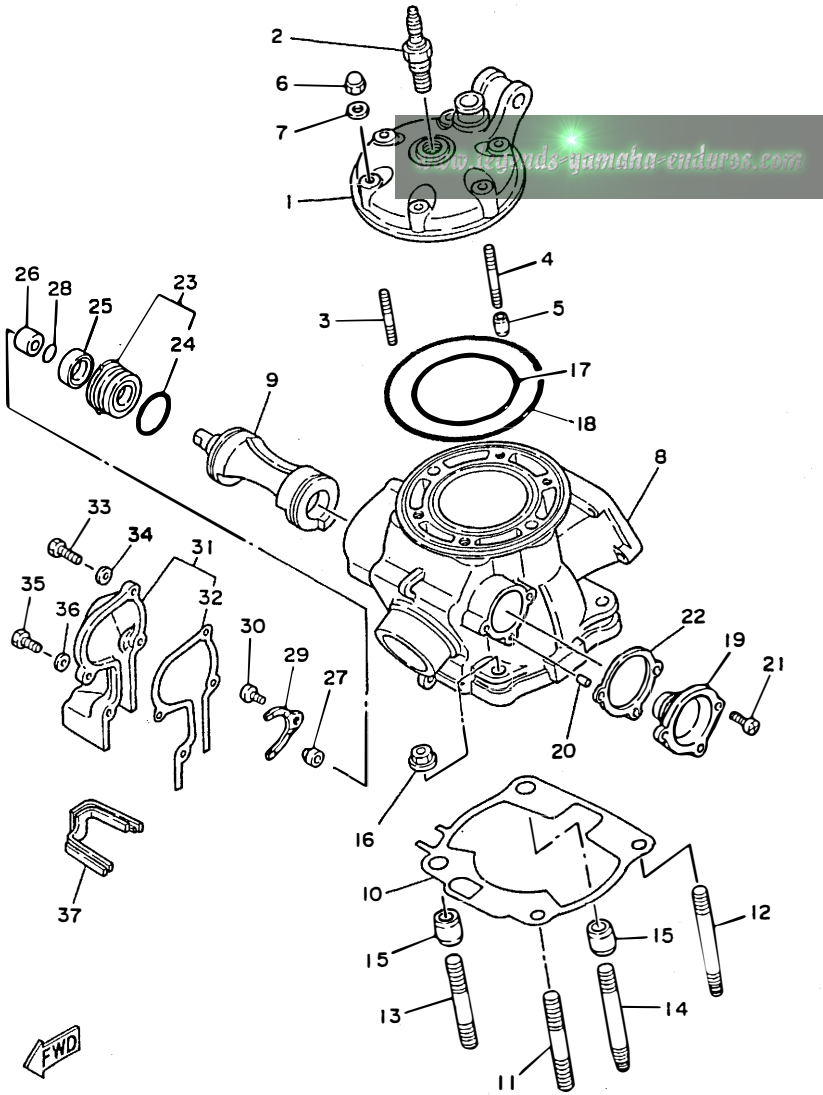


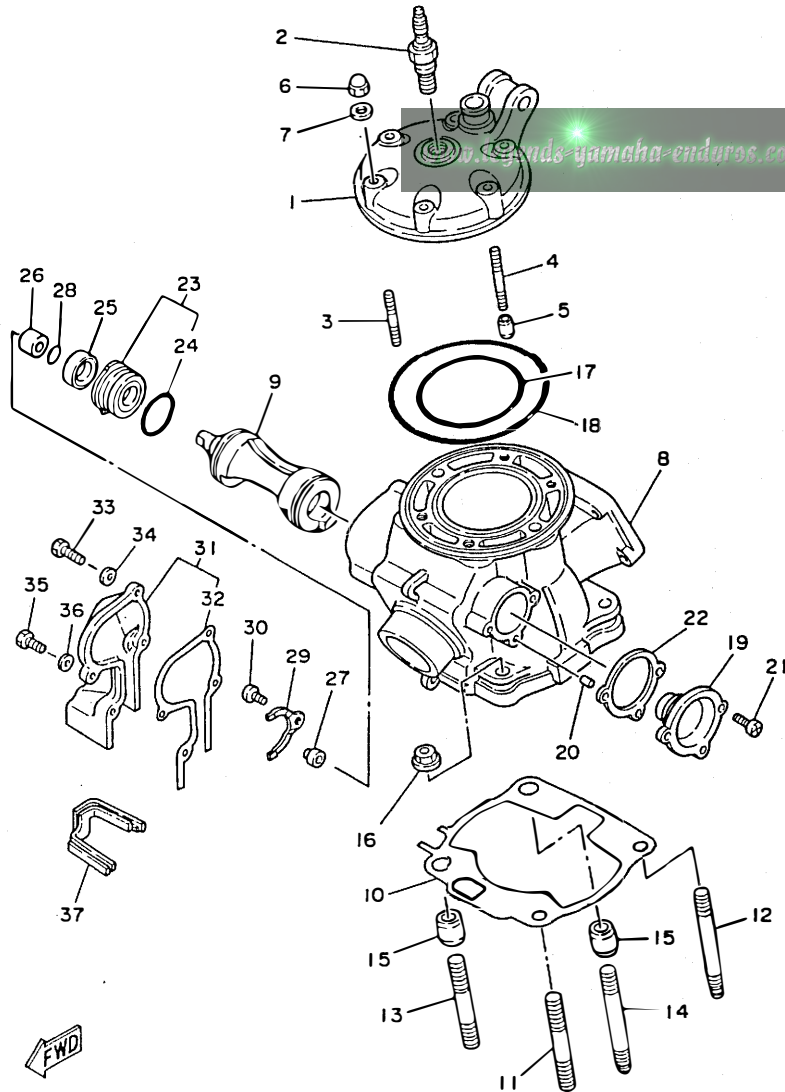
FIG. 1 CYLINDER HEAD

REF. NO.	PART NO.	DESCRIPTION	Q'TY	REMARKS
1	4DA-11111-01	HEAD, cylinder 1	1	
2	94702-00323	PLUG, spark (NGK B8EG)	1	UR
	94702-00326	PLUG, spark (NGK BR8EG)	1	UR FOR CANADA
3	90116-08394	BOLT, stud	4	
4	90116-08392	BOLT, stud	2	
5	99510-10114	PIN, dowel	2	
6	90176-08026	NUT, crown	6	
7	90201-08087	WASHER, plate	6	
8	4DA-11311-00	CYLINDER 1	1	
9	4DA-1131A-00	VALVE 1	1	
10	2VM-11351-10	GASKET, cylinder	1	
11	90116-10314	BOLT, stud	1	
12	90116-10547	BOLT, stud	1	
13	90116-10314	BOLT, stud	1	
14	90116-10547	BOLT, stud	1	
15	99530-14016	PIN, dowel	2	
16	95701-10500	NUT, flange	4	
17	93210-77363	O-RING	1	
18	93211-11770	O-RING	1	
19	3JE-W1132-00	HOLDER 1	1	
20	93604-08071	PIN, dowel	1	
21	98501-05012	SCREW, pan head	2	
22	3JE-1131N-10	GASKET, holder	1	
23	5X4-Y113F-10	HOLDER 2 ASSY	1	
24	93210-270A8	O-RING	1	
25	93104-16074	OIL SEAL	1	
26	90387-102W0	COLLAR	1	
27	3JE-11937-00	BOSS, lever	1	

FWD  
3SP1100-0010

FIG. 1 CYLINDER HEAD

REF. NO.	PART NO.	DESCRIPTION	Q'TY	REMARKS
28	93210-09192	O-RING	1	
29	1LX-11915-00	PLATE, thrust 1	1	
30	98506-05008	SCREW, pan head	1	
31	3SP-11992-10	HOUSING 2	1	
32	3SP-11993-10	.GASKET	1	
33	97021-05020	BOLT	2	
34	92901-05600	WASHER, plate	2	
35	97001-05016	BOLT	2	
36	92901-05600	WASHER, plate	2	
37	2VM-11995-00	SEAL, housing	1	



FWD  
3SP1100-0010

B3

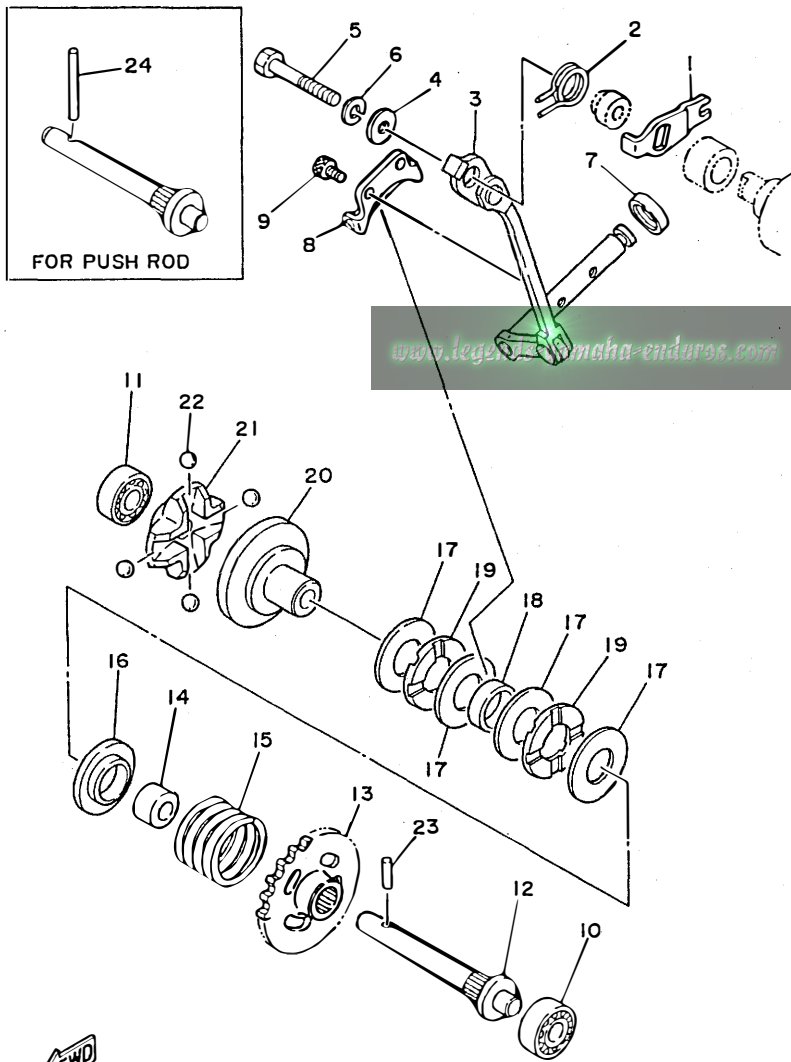


FIG. 2 GOVERNOR

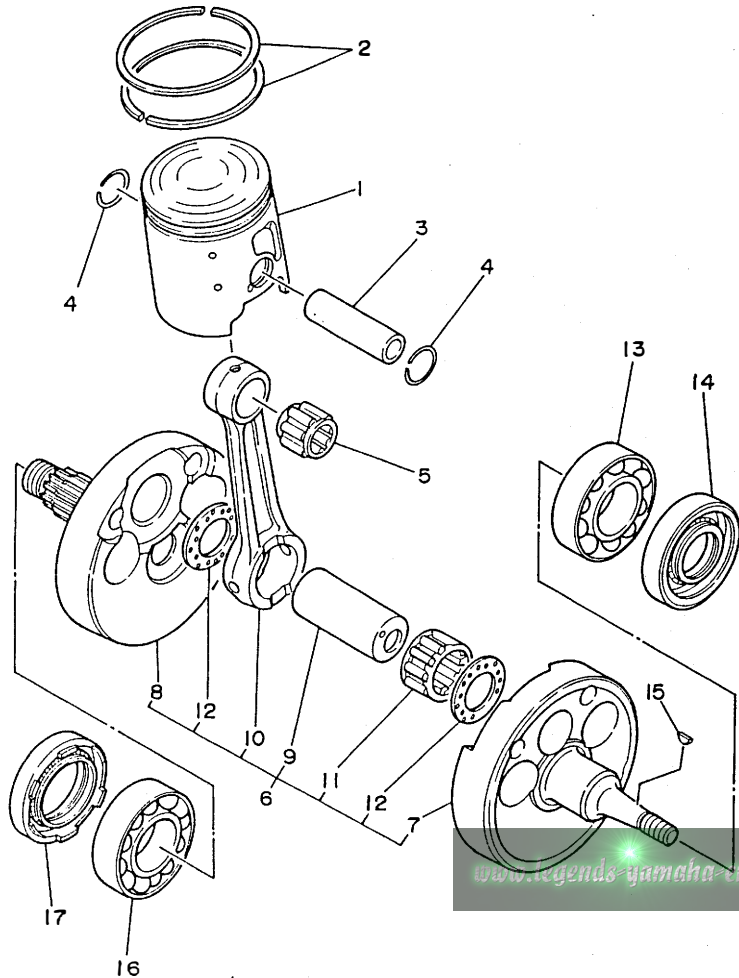
REF. NO.	PART NO.	DESCRIPTION	Q'TY	REMARKS
1	3JE-11931-00	LEVER	1	
2	90508-14783	SPRING, torsion	1	
3	3SP-11990-00	PUSH ROD ASSY	1	
4	90201-057H5	WASHER, plate	1	
5	97021-05030	BOLT	1	
6	92990-05100	WASHER, spring	1	
7	93104-08040	OIL SEAL	1	
8	3JE-11922-00	FORK, governor	1	
9	91316-04006	BOLT	2	
10	93300-60814	BEARING (608M4ML01)	1	NMB
11	93300-60814	BEARING (608M4ML01)	1	NMB
12	5X4-11921-02	SHAFT, governor	1	
13	24X-11953-01	GEAR, governor	1	
14	90560-08213	SPACER	1	
15	90501-240F4	SPRING, compression	1	
16	5X4-11952-00	PLATE	1	
17	90201-154E9	WASHER, plate	4	
18	90387-152F2	COLLAR	1	
19	93340-21505	BEARING, thrust	2	
20	5X5-11912-01	RETAINER, weight	1	
21	5X5-11911-01	RETAINER	1	
22	93521-64032	BALL	4	
23	93603-14179	PIN, dowel	1	
24	93604-29184	PIN, dowel	1	AP FOR PUSH ROD



3JE1010-9021

B4

FIG. 3 CRANKSHAFT. PISTON



REF. NO.	PART NO.	DESCRIPTION	Q'TY	REMARKS
1	4DA-11631-00-A0	PISTON (STD)	1	UR RED
	4DA-11631-00-B0	PISTON (STD)	1	UR ORANGE
	4DA-11631-00-C0	PISTON (STD)	1	UR GREEN
	4DA-11631-00-D0	PISTON (STD)	1	UR PURPLE
2	4DA-11601-00	PISTON RING SET (STD)	1	
3	2VM-11633-01	PIN, piston	1	
4	93450-19052	CIRCLIP	2	
5	93310-418E9	BEARING, cylindrical	1	
6	3XK-11400-01	CRANKSHAFT ASSY	1	
7	3XK-11412-01	.CRANK 1	1	
8	3XK-11422-01	.CRANK 2	1	
9	3JE-11681-01	.PIN, crank 1	1	
10	5X5-11651-02	.ROD, connecting	1	
11	93310-425T1	.BEARING, cylindrical	1	
12	90209-25085	.WASHER	2	
13	93306-37802	BEARING	1	
14	93102-22363	OIL SEAL	1	
15	90280-03017	KEY, woodruff	1	
16	93306-37802	BEARING	1	
17	93103-40091	OIL SEAL	1	



3SP1100-0030

B5



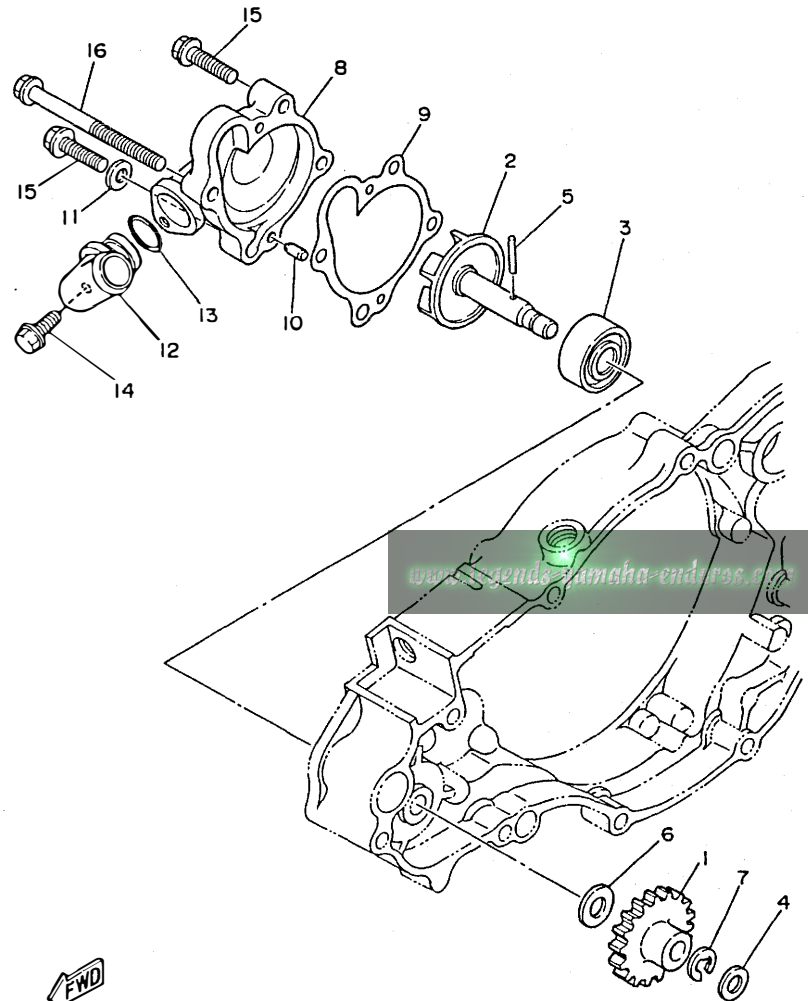


FIG. 4 WATER PUMP

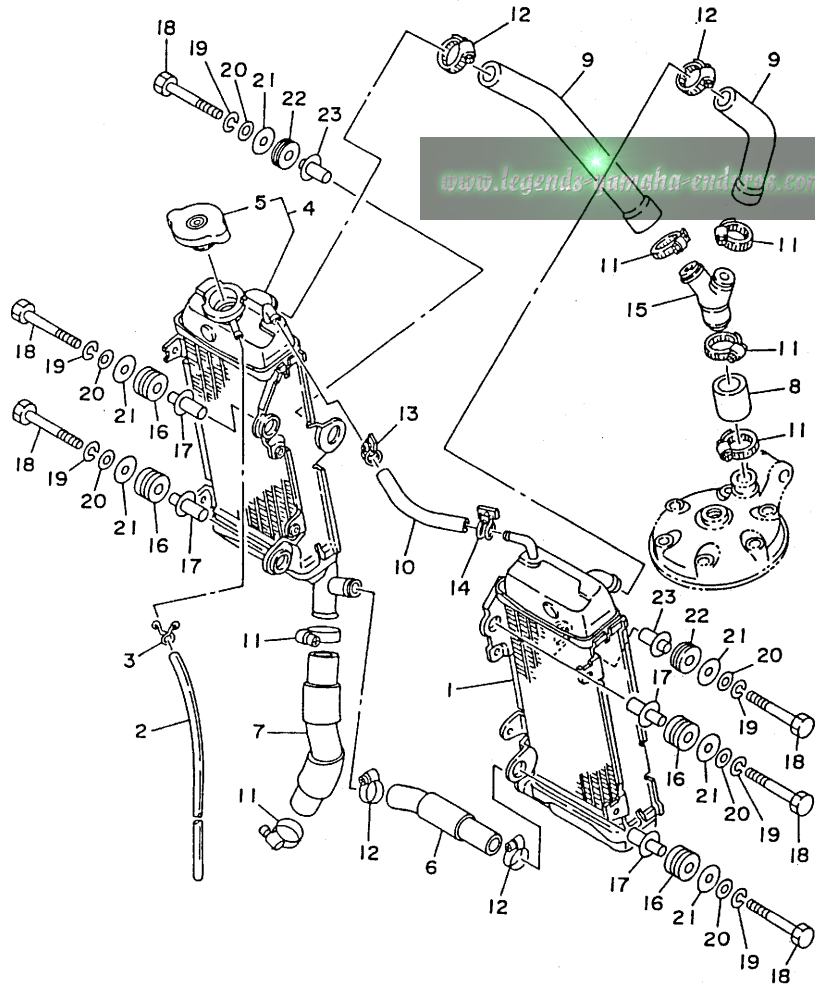
REF. NO.	PART NO.	DESCRIPTION	Q'TY	REMARKS
1	2VM-12459-00	GEAR, impeller shaft	1	
2	2VM-12450-00	IMPELLER SHAFT ASSY	1	
3	93103-10147	OIL SEAL	1	
4	90201-08759	WASHER, plate	1	
5	93603-22028	PIN, dowel	1	
6	90201-08784	WASHER, plate	1	
7	99009-06600	CIRCLIP	1	
8	3SP-12422-00	COVER, housing	1	
9	2VM-12428-10	GASKET, housing cover 2	1	
10	93604-10011	PIN, dowel	2	
11	90430-06166	GASKET	1	
12	10V-12469-01	JOINT 1	1	
13	93210-16275	O-RING	1	
14	95023-06025	BOLT	1	
15	95023-06025	BOLT	3	
16	95021-06080	BOLT, flange	1	



3SPI100-0040

B6

FIG. 5 RADIATOR. HOSE

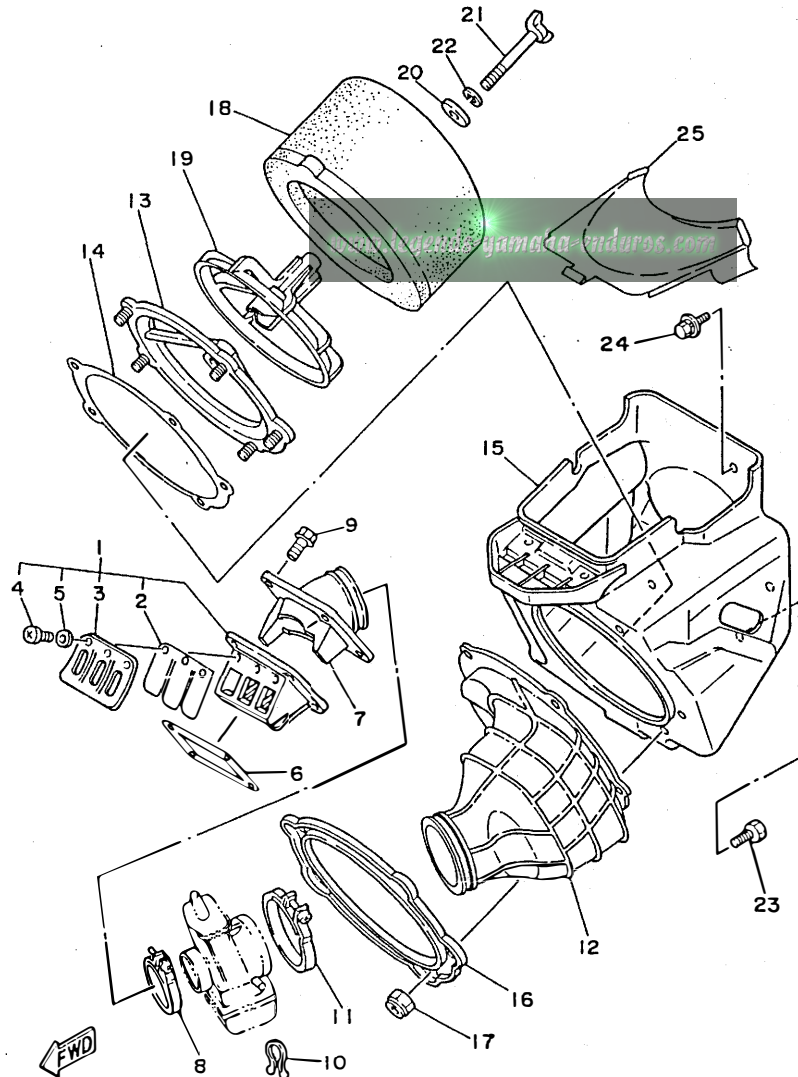


REF. NO.	PART NO.	DESCRIPTION	Q'TY	REMARKS
1	3SP-12460-00	RADIATOR ASSY	1	
2	90446-09013	HOSE	1	
3	90467-09006	CLIP	1	
4	4DC-1240A-00	RADIATOR ASSY 2	1	
5	22W-12462-00	.CAP, radiator	1	
6	4DC-12482-00	PIPE 2	1	
7	4DC-12483-00	PIPE 3	1	
8	3SP-12485-00	PIPE 5	1	
9	4DC-12476-00	PIPE 6	2	
10	4DC-1248A-00	PIPE 8	1	
11	90450-28014	HOSE CLAMP ASSY	6	
12	90450-22052	HOSE CLAMP ASSY	4	
13	90450-15041	HOSE CLAMP ASSY	1	
14	90450-17036	HOSE CLAMP ASSY	1	
15	24X-12469-00	JOINT 1	1	
16	90480-15528	GROMMET	4	
17	90560-07382	SPACER	4	
18	97021-06050	BOLT	6	
19	92990-06100	WASHER, spring	6	
20	92901-06600	WASHER, plate	6	
21	90201-06570	WASHER, plate	6	
22	90480-18276	GROMMET	2	
23	90560-06383	SPACER	2	



4DC1100-2050

B7

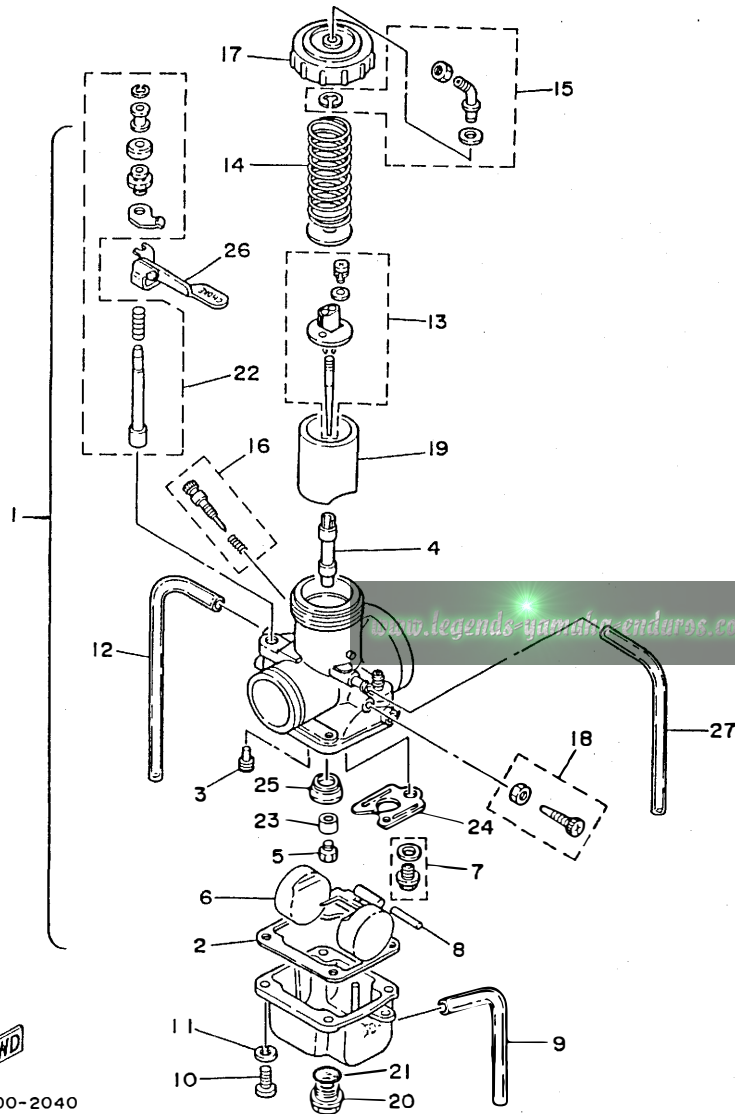


4DC1100-2060

FIG. 6 INTAKE

REF. NO.	PART NO.	DESCRIPTION	Q'TY	REMARKS
1	4DC-13610-00	REED VALVE ASSY	1	
2	3SP-13613-00	.REED, valve	2	
3	4DA-13616-00	.STOPPER, reed valve	2	
4	98580-03008	.SCREW, pan head	6	
5	92990-03100	.WASHER, spring	6	
6	2K7-13621-10	GASKET, valve seat	1	
7	4DC-13565-00	JOINT, carburetor	1	
8	90460-51109	CLAMP, hose	1	
9	95023-06020	BOLT	4	
10	90464-16039	CLAMP	1	
11	90460-68230	CLAMP, hose	1	
12	4AA-14453-00	JOINT, air cleaner 1	1	
13	3JD-14459-00	HOLDER, guide	1	
14	3JD-14462-00	SEAL	1	
15	3XJ-W1441-01	AIR CLEANER CASE COMP.	1	
16	3JD-14477-00	PLATE	1	
17	95601-05100	NUT, u	5	
18	3JD-14451-00	ELEMENT, air cleaner	1	
19	3JD-14458-00	GUIDE	1	
20	90209-06096	WASHER	1	
21	90122-06030	BOLT, wing	1	
22	92990-06100	WASHER, spring	1	
23	95023-06010	BOLT	1	
24	90119-06185	BOLT, with washer	3	
25	3XJ-1441A-00	COVER, cleaner case 1	1	AP FOR AIR CLEANER COVER

FIG. 7 CARBURETOR

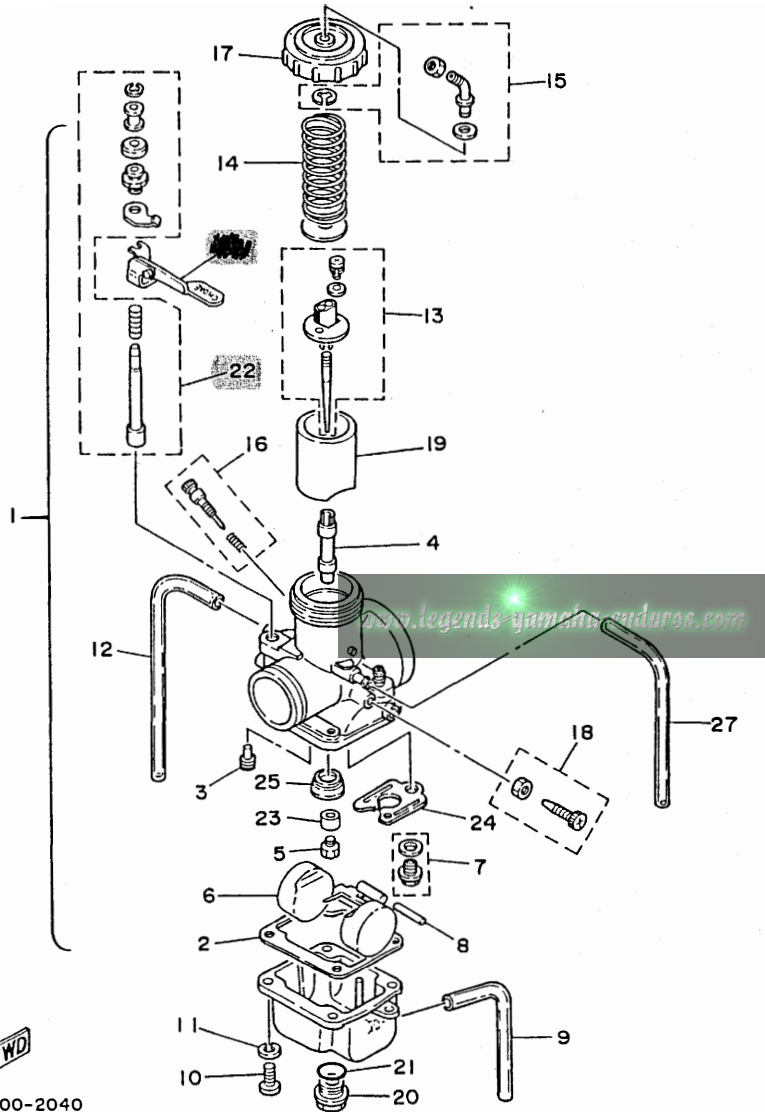


REF. NO.	PART NO.	DESCRIPTION	Q'TY	REMARKS
1	4DC-14101-00	CARBURETOR ASSY 1	1	
2	363-14184-00	.GASKET, float chamber	1	
3	193-14142-40-A1	.JET, pilot (# 40)	1	STD
	193-14142-35	.JET, pilot (#35)	1	AP
	193-14142-45-A1	.JET, pilot (# 45)	1	AP
4	510-14141-R2	.NOZZLE, main	1	STD
	510-14141-R0	.NOZZLE, main	1	AP
	510-14141-R4	.NOZZLE, main	1	AP
5	137-14143-72	.JET, main (#360)	1	STD
	137-14143-70	.JET, main (#350)	1	AP
	137-14143-74	.JET, main (#370)	1	AP
6	2N7-14185-00	.FLOAT	1	
7	23X-14107-35	.NEEDLE VALVE SET	1	
8	537-14186-00	.PIN, float	1	
9	510-14197-00	.PIPE	1	
10	98501-05016	.SCREW, pan head	4	
11	92901-05100	.WASHER, spring	4	
12	2HH-14197-00	.PIPE	1	
13	23X-1490J-00	.NEEDLE SET	1	
14	431-14131-00	.SPRING, throttle valve	1	
15	23X-14106-00	.CABLE ADJUST SCREW SET	1	
16	23X-14104-00	.AIR SCREW SET	1	
17	5Y9-14158-00	.TOP, mixing chamber	1	
18	23X-14103-00	.THROTTLE SCREW SET	1	
19	2X8-14112-40	.VALVE, throttle 1	1	STD
	2X8-14112-35	.VALVE, throttle 1	1	AP
	2X8-14112-45	.VALVE, throttle 1	1	AP
20	510-14115-00	.PLUG, screw	1	

4AA1100-2040

B9

FIG. 7 CARBURETOR



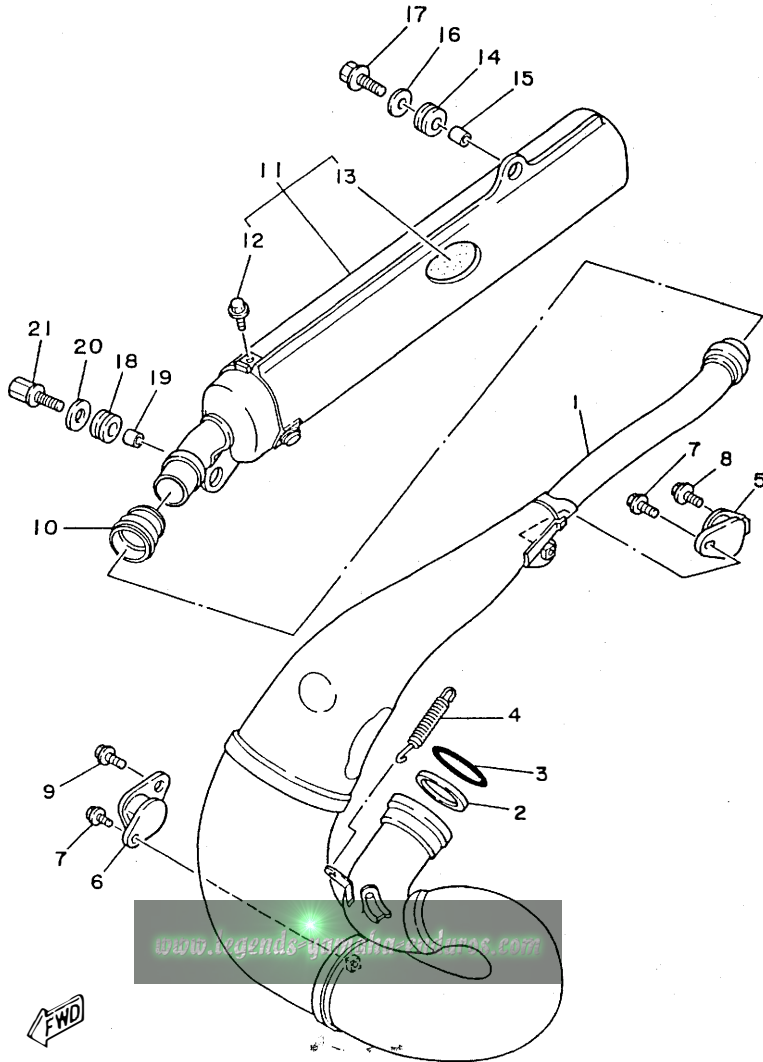
REF. NO.	PART NO.	DESCRIPTION	Q'TY	REMARKS
21	558-14147-00	.O-RING	1	
22	26A-1410A-00	.STARTER SET <i>24X-1410A-00</i>	1	
23	5X5-14153-00	.WASHER, main jet	1	
24	3R4-14146-00	.PLATE	1	
25	509-14145-00	.SETTER, needle jet	1	
<del>26</del>	<del>509-14145-00</del>	.LEVER, starter 1	1	
27	3SP-14149-00	.PIPE	1	



4AA1100-2040

B10

FIG. 8 EXHAUST



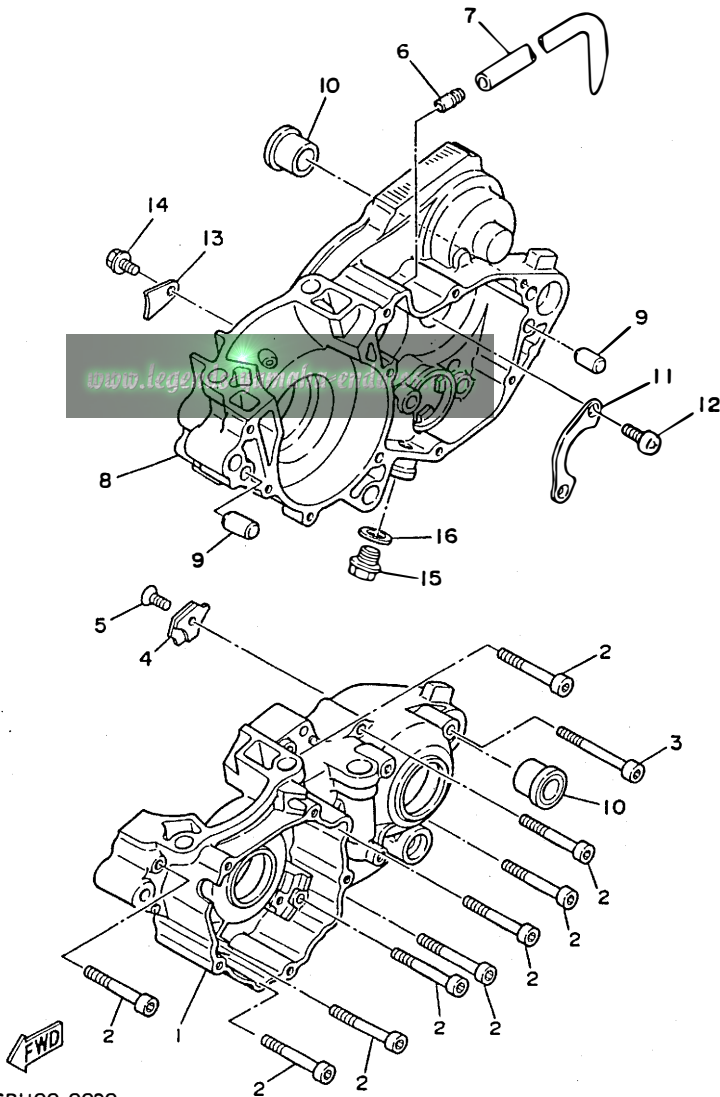
REF. NO.	PART NO.	DESCRIPTION	QTY	REMARKS
1	4DA-14610-00	EXHAUST PIPE ASSY 1	1	
2	3R4-14613-00	GASKET, exhaust pipe	1	
3	93210-56743	O-RING	1	
4	90507-20030	SPRING, tension	3	
5	565-14771-00	STAY, muffler 1	1	
6	483-14781-01	STAY, muffler 2	1	
7	95023-06012	BOLT	2	
8	95023-06010	BOLT	1	
9	95023-08012	BOLT	1	
10	3JE-14615-00	JOINT, exhaust 1	1	
11	3XK-14753-10	SILENCER, exhaust	1	
12	95023-06008	.BOLT	3	
13	3XK-1469A-10	.FIBER	1	
14	39X-14747-00	DAMPER, muffler	1	
15	90387-100Y1	COLLAR	1	
16	90201-08612	WASHER, plate	1	
17	95023-08030	BOLT	1	
18	90480-16233	GROMMET	1	
19	90387-060A7	COLLAR	1	
20	90201-06407	WASHER, plate	1	
21	90109-064F4	BOLT	1	

4DA2100-2080

B11

FIG. 9 CRANKCASE

REF. NO.	PART NO.	DESCRIPTION	Q'TY	REMARKS
1	2VM-15111-03	CRANKCASE 1	1	
2	91316-06050	BOLT	9	
3	91316-06070	BOLT	1	
4	3SP-15381-00	PLATE, bearing cover	1	
5	98701-06012	SCREW, flat head	1	
6	353-13115-01	CONNECTOR, suction pipe	1	
7	90445-086A8	HOSE	1	
8	2VM-15121-01	CRANKCASE 2	1	
9	99510-12016	PIN, dowel	2	
10	90387-160H4	COLLAR	2	
11	4L0-17471-00	PLATE, cover	1	
12	98501-06012	SCREW, pan head	2	
13	4V4-15118-00	HOLDER	1	
14	95811-06010	BOLT, flange	1	
15	90340-12097	PLUG, straight screw	1	
16	90430-12207	GASKET	1	



3SP1100-0090

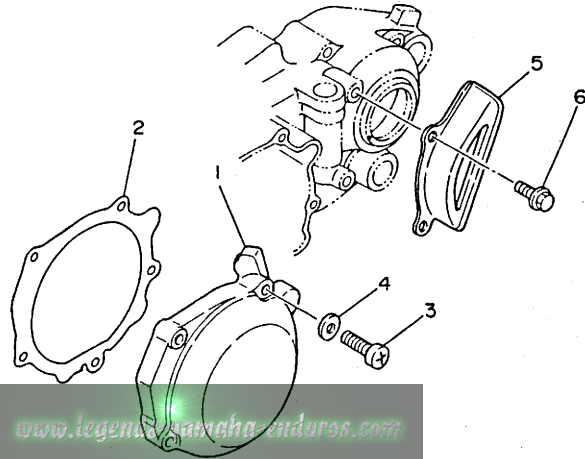
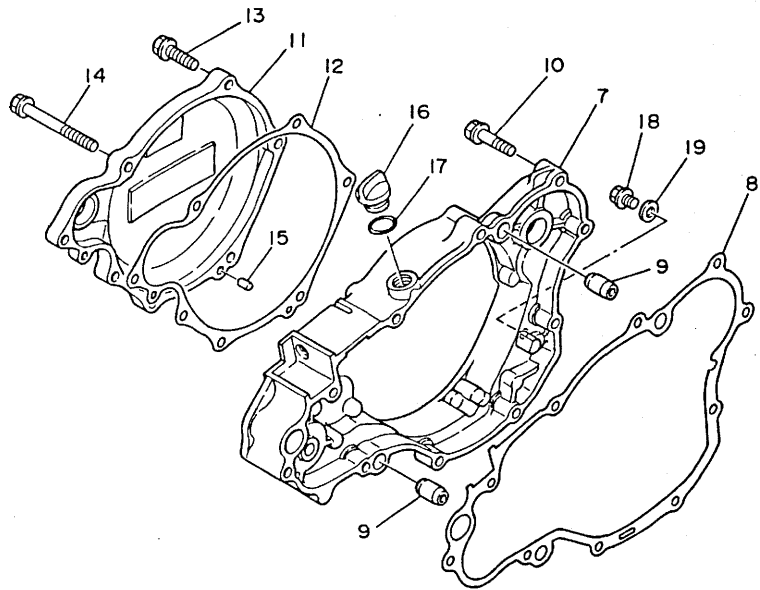


FIG. 10 CRANKCASE COVER 1

REF. NO.	PART NO.	DESCRIPTION	Q'TY	REMARKS
1	2VM-15411-00	COVER, crankcase 1	1	
2	2VM-15451-10	GASKET, crankcase cover 1	1	
3	98501-06030	SCREW, pan head	5	
4	92901-06600	WASHER, plate	5	
5	2VM-15421-00	COVER, crankcase 2	1	
6	95023-06012	BOLT	2	
7	3SP-Y1543-00	COVER, crankcase 3	1	
8	2VM-15462-10	GASKET, crankcase cover 3	1	
9	99510-12016	PIN, dowel	2	
10	95023-06030	BOLT	7	
11	3SP-15415-00	COVER, generator	1	
12	3SP-15463-10	GASKET, carburetor cover 2	1	
13	95023-06025	BOLT	5	
14	95021-06070	BOLT, flange	2	
15	93604-10011	PIN, dowel	2	
16	168-15362-00	PLUG, oil level	1	
17	93210-14104	O-RING	1	
18	95023-06008	BOLT	1	
19	90430-06016	GASKET	1	



3SPI100-0100

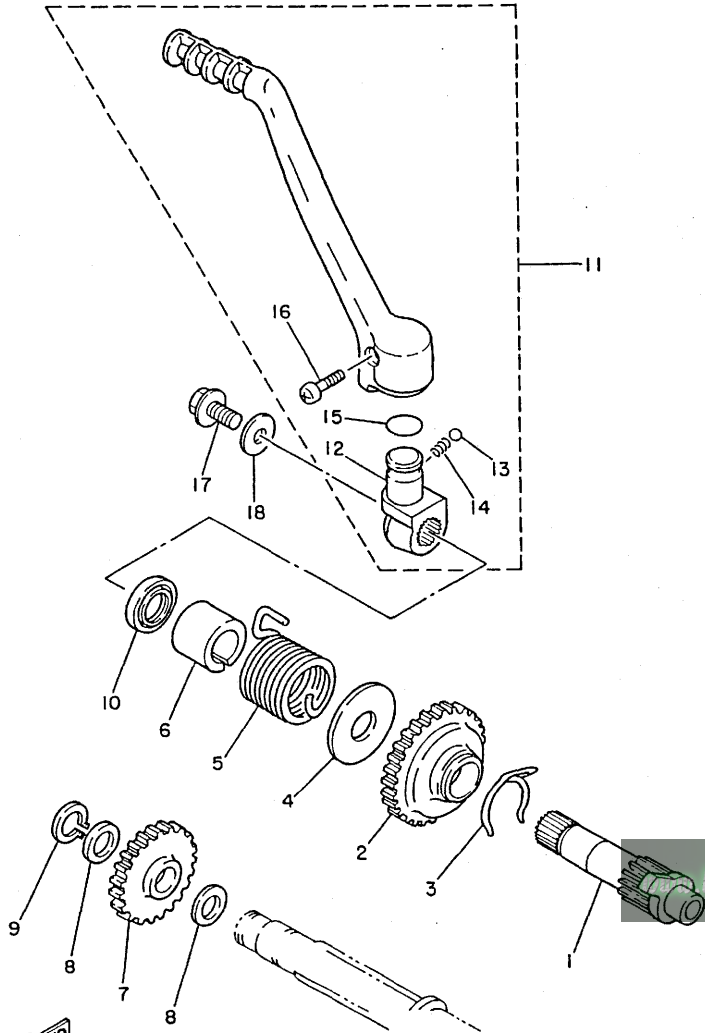
www.legendaryyamaharenduros.com

**B13**



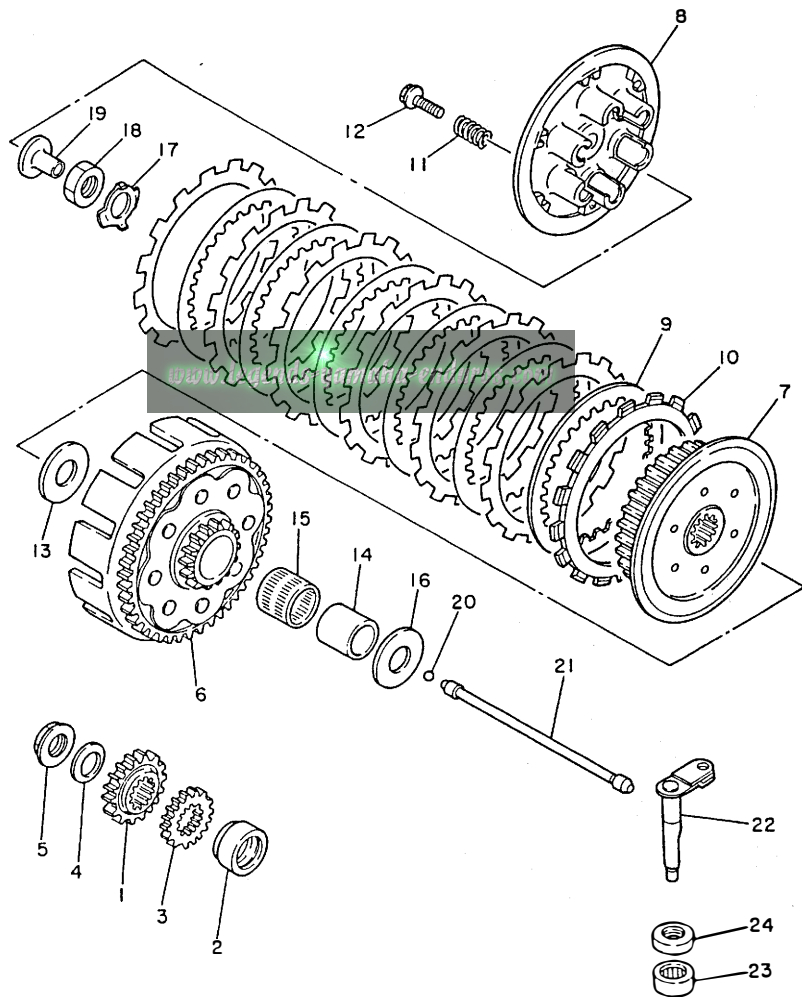
FIG. 11 STARTER

REF. NO.	PART NO.	DESCRIPTION	Q'TY	REMARKS
1	2VM-15661-00	AXLE, kick	1	
2	3R4-15641-00	GEAR, kick (26T)	1	
3	90468-26048	CLIP	1	
4	90201-20358	WASHER, plate	1	
5	90508-30743	SPRING, torsion	1	
6	2VM-15664-00	GUIDE, spring	1	
7	38V-15651-00	GEAR, kick idle (23T)	1	
8	90201-17545	WASHER, plate	2	
9	99009-17400	CIRCLIP	1	
10	93102-20309	OIL SEAL	1	
11	3SP-15620-01	KICK CRANK ASSY	1	
12	3SP-15621-01	.BOSS, kick crank	1	
13	93501-04011	.BALL	1	
14	90501-13720	.SPRING, compression	1	
15	93210-19216	.O-RING	1	
16	90157-06048	.SCREW, pan head	1	
17	95023-08020	BOLT	1	
18	90201-087A9	WASHER, plate	1	



FWD  
3SP1100-0110

B14



FWD

2VM100-8120

FIG. 12 CLUTCH

REF. NO.	PART NO.	DESCRIPTION	Q'TY	REMARKS
1	2VM-16111-00	GEAR, primary drive	1	
2	90387-252F6	COLLAR	1	
3	3XK-11956-00	GEAR, governor drive	1	
4	90208-18025	WASHER, conical spring	1	
5	90179-18172	NUT	1	
6	3SP-16150-00	PRIMARY DRIVEN GEAR COMP.	1	
7	2VM-16371-00	BOSS, clutch	1	
8	2VM-16351-01	PLATE, pressure 1	1	
9	3XK-16325-00	PLATE, clutch 2	6	
10	3XK-16321-00	PLATE, friction	7	
11	90501-23598	SPRING, compression	6	
12	90159-06016	SCREW, with washer	6	
13	2K7-16154-00	PLATE, thrust 1	1	
14	2VM-16181-00	SPACER 1	1	
15	93310-230T7	BEARING, cylindrical	1	
16	3SP-16154-00	PLATE, thrust 1	1	
17	90215-20231	WASHER, lock	1	
18	90170-20255	NUT	1	
19	2VM-16356-00	ROD, push 1	1	
20	93511-32027	BALL	1	
21	3SP-16357-00	ROD, push 2	1	
22	4DA-16381-00	PUSH LEVER COMP.	1	
23	93315-11206	BEARING, cylindrical	1	
24	93102-12224	OIL SEAL	1	

B15

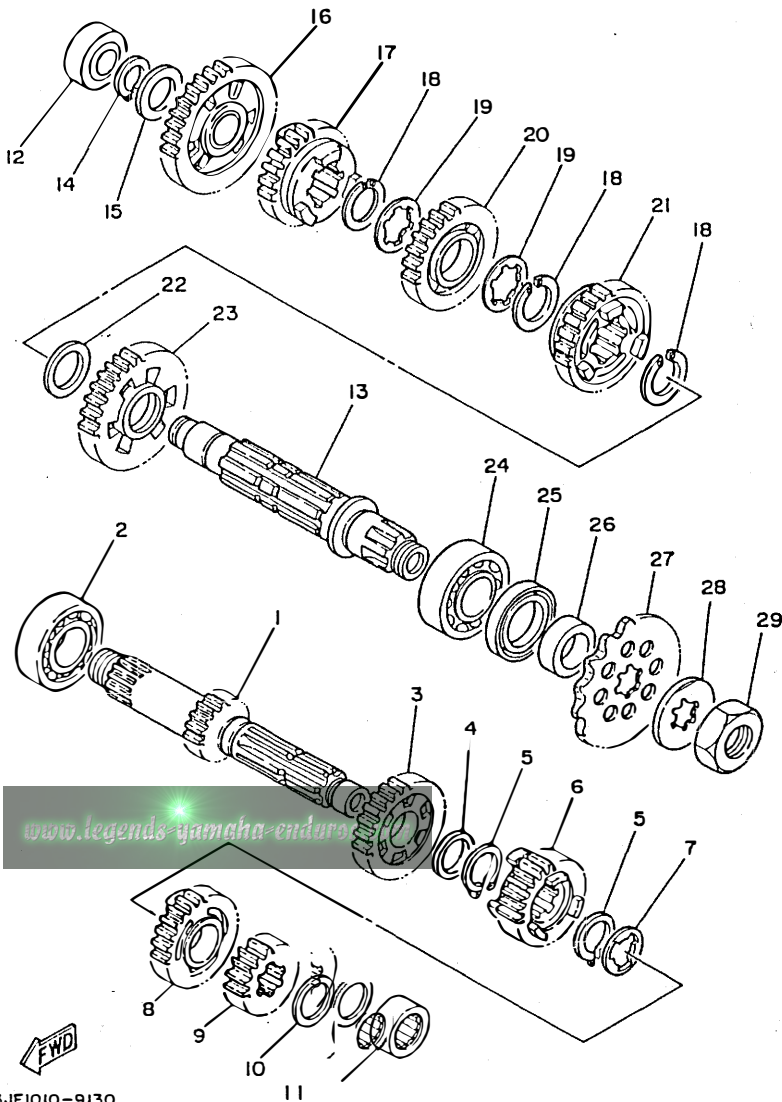


FIG. 13 TRANSMISSION

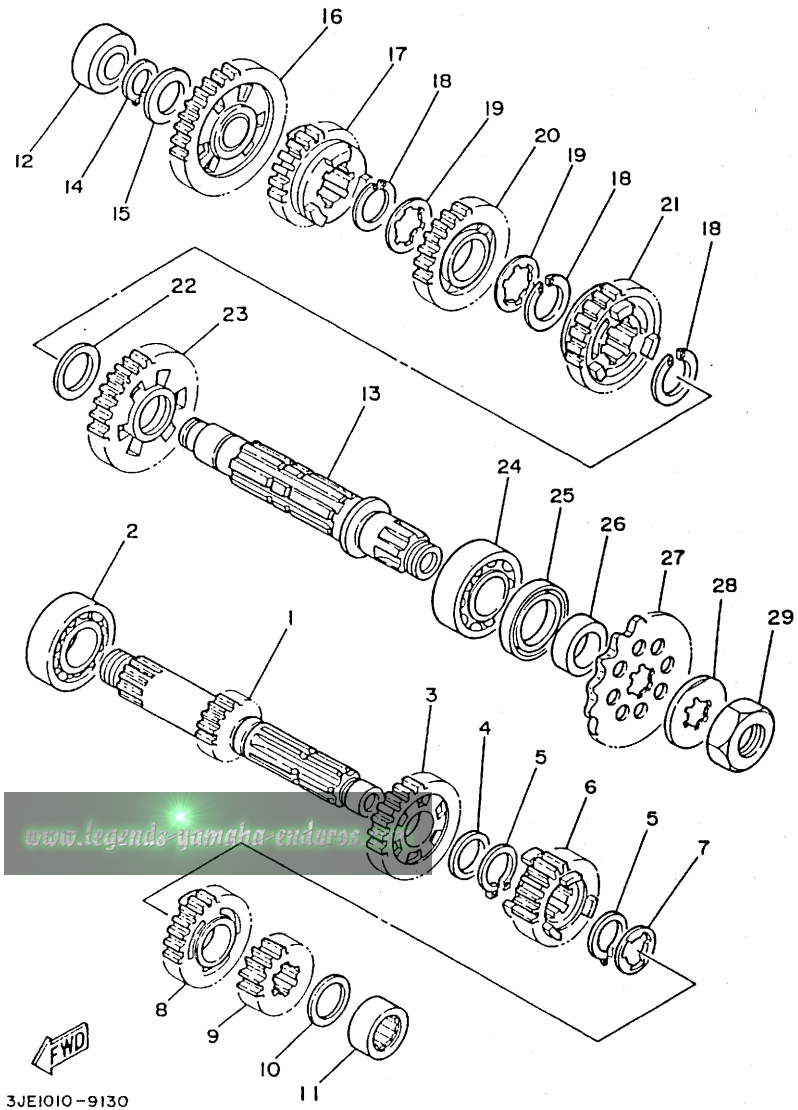
REF. NO.	PART NO.	DESCRIPTION	Q'TY	REMARKS
1	3RB-17411-00	AXLE, main (14T)	1	
2	93306-20540	BEARING	1	
3	3RB-17151-00	GEAR, 5th pinion (25T)	1	
4	90201-22555	WASHER, plate	1	
5	93410-22039	CIRCLIP	2	
6	3RB-17131-00	GEAR, 3rd pinion	1	
7	90209-18135	WASHER	1	
8	3RB-17141-10	GEAR, 4th pinion	1	
9	2VM-17121-00	GAER, 2nd pinion (17T)	1	
10	90209-17311	WASHER	1	
11	93311-41734	BEARING, cylindrical	1	
12	93311-62035	BEARING, cylindrical	1	
13	2VM-17421-00	AXLE, drive	1	
14	93410-20038	CIRCLIP	1	
15	90201-20278	WASHER, plate	1	
16	3RB-17211-00	GEAR, 1st wheel (32T)	1	
17	3RB-17251-00	GEAR, 5th wheel (21T)	1	
18	93440-25084	CIRCLIP	3	
19	90209-22082	WASHER	2	
20	3RB-17231-00	GEAR, 3rd wheel	1	
21	3RB-17241-10	GEAR, 4th wheel	1	
22	90201-253K0	WASHER, plate (T=1.0)	1	
23	2VM-17221-00	GEAR, 2nd wheel (29T)	1	
24	93306-20574	BEARING	1	
25	93102-32M07	OIL SEAL	1	
26	90387-25663	COLLAR	1	
27	93834-14049	SPROCKET, drive 14T (1W41746140)	1	STD
	93834-13029	SPROCKET, drive 13T (1W41746130)	1	AP

C2

3JE1010-9130

www.legends-yamaha-enduro

FIG. 13 TRANSMISSION



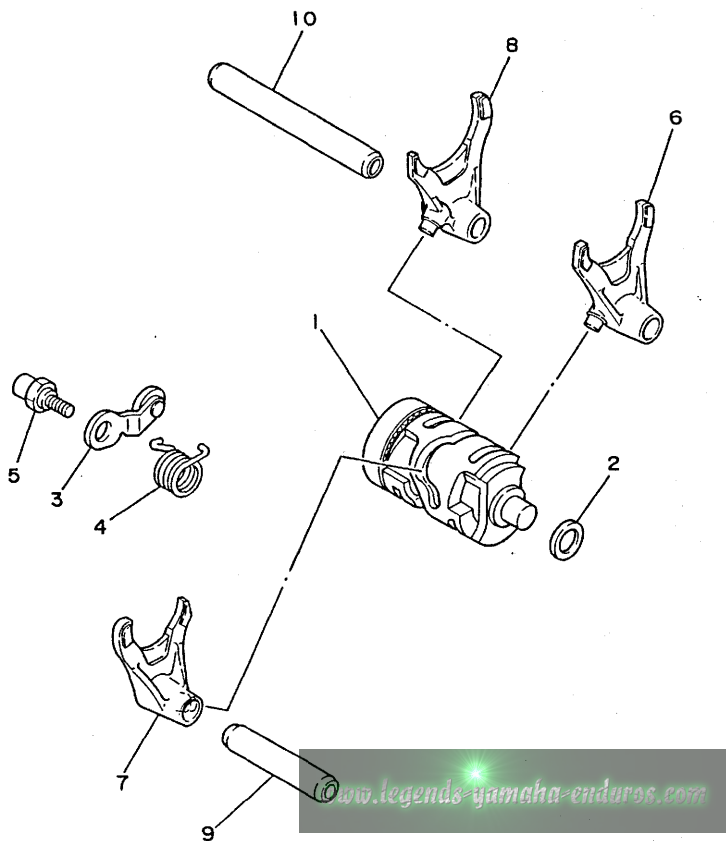
REF. NO.	PART NO.	DESCRIPTION	Q'TY	REMARKS
27	93834-15075	SPROCKET, drive 15T (1W41746150)	1	AP
28	90215-21239	WASHER, lock	1	
29	90179-20255	NUT	1	

3JE1010-9130



C3

FIG. 14 SHIFT CAM. FORK

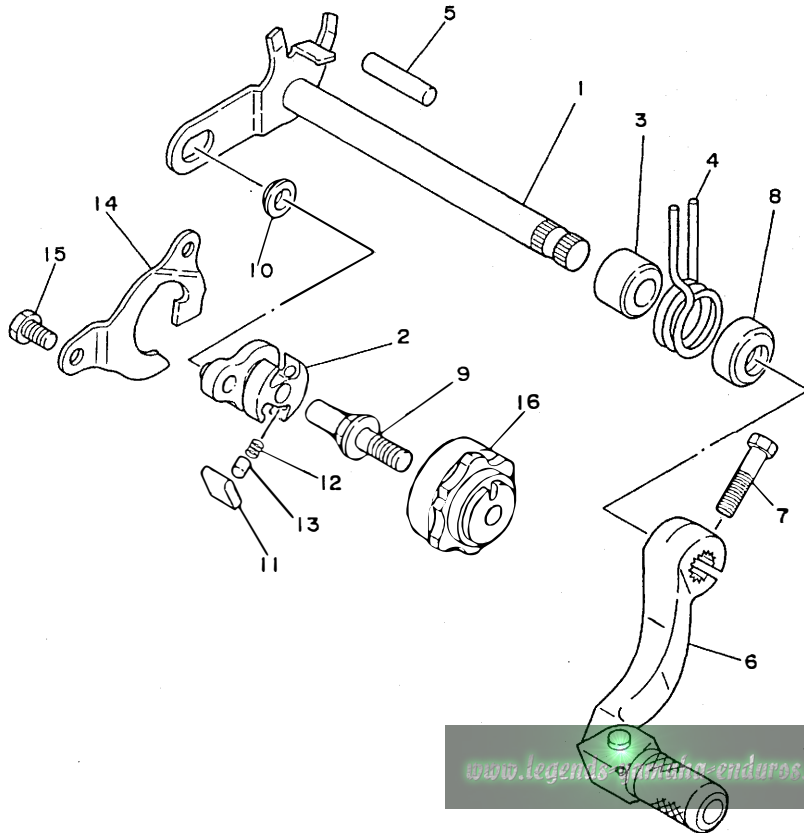


REF. NO.	PART NO.	DESCRIPTION	Q'TY	REMARKS
1	3XK-18540-01	SHIFT CAM ASSY	1	
2	90201-12166	WASHER, plate	1	
3	3XK-18140-00	STOPPER LEVER ASSY	1	
4	90508-26561	SPRING, torsion	1	
5	3XK-18177-00	BOLT, stopper	1	
6	2VM-18511-00	FORK, shift 1	1	
7	2VM-18512-00	FORK, shift 2	1	
8	2VM-18513-00	FORK, shift 3	1	
9	1LX-18531-00	BAR, shift fork guide 1	1	
10	34K-18535-00	BAR, shift fork guide 2	1	



3XK1100-1140

FIG. 15 SHIFTER



REF. NO.	PART NO.	DESCRIPTION	Q'TY	REMARKS
1	3XK-18101-01	SHIFT SHAFT ASSY	1	
2	3XK-18122-00	LEVER, shift 2	1	
3	90560-12280	SPACER	1	
4	90508-291A8	SPRING, torsion	1	
5	93608-33046	PIN, dowel	1	
6	2VM-18110-00	SHIFT PEDAL ASSY	1	
7	97011-06025	BOLT	1	
8	93102-12106	OIL SEAL (SD 12-22-5 HS)	1	
9	3XJ-18173-00	PIN, shift	1	
10	3XJ-18178-00	ROLLER, shift lever	1	
11	3XJ-18182-00	PAWL, shifter	2	
12	90501-052G5	SPRING, compression	2	
13	3XJ-18184-00	PIN, pawl	2	
14	4DA-18172-00	GUIDE, shift	1	
15	90101-06664	BOLT	2	
16	3XJ-18185-00	SEGMENT	1	

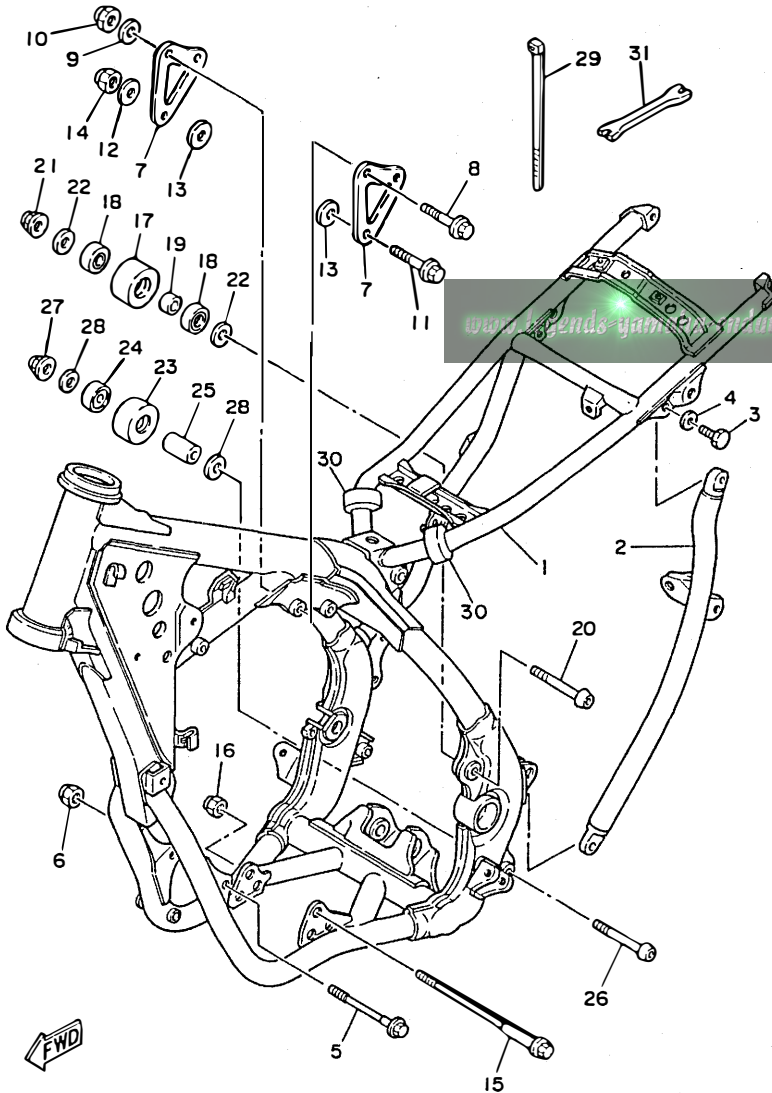


4DA2100-2150

C5

FIG. 16 FRAME

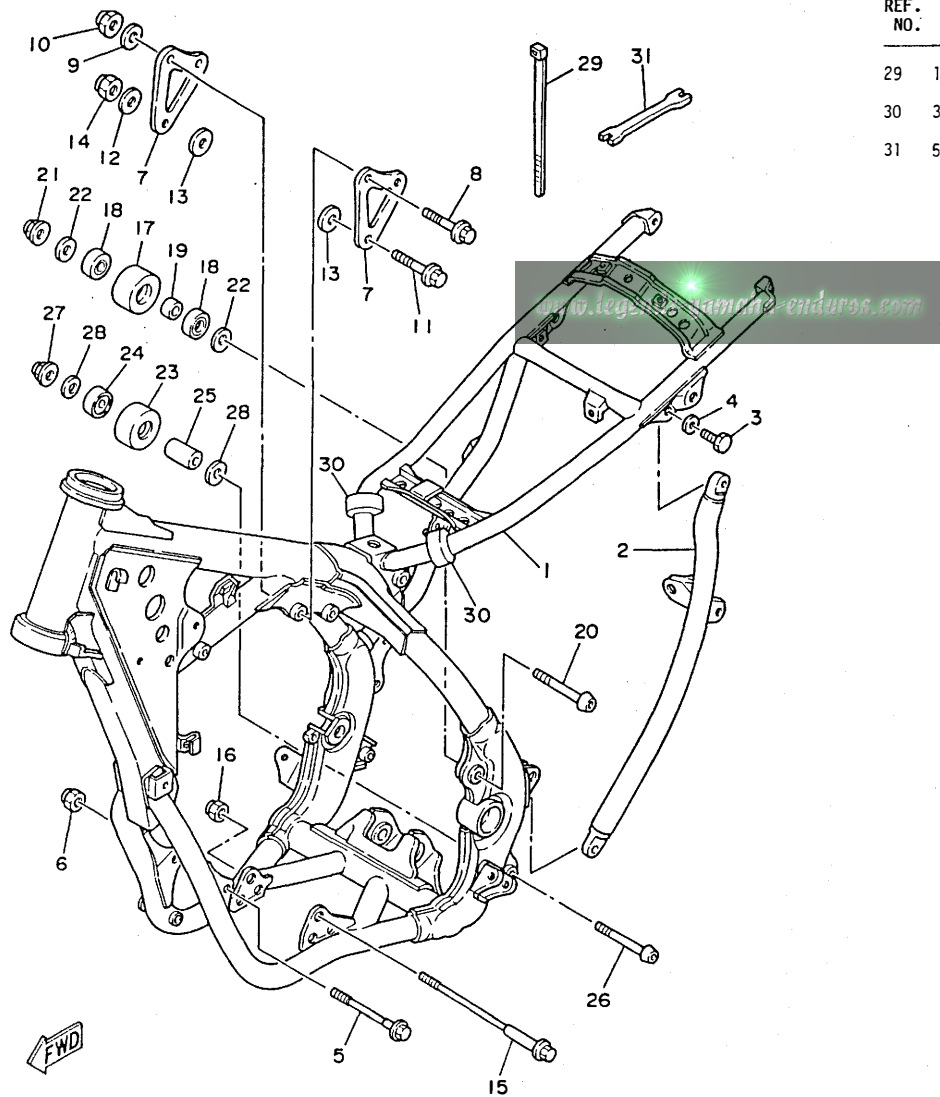
REF. NO.	PART NO.	DESCRIPTION	Q'TY	REMARKS
1	4DA-21110-00-UJ	FRAME COMP.	1	RADICAL WHITE
2	3XK-21123-00-T9	BACK, stay lh.	1	COMPETITION SILVER
3	90101-08461	BOLT	2	
4	90201-080E2	WASHER, plate	2	
5	90105-08592	BOLT, washer based	1	
6	95611-08200	NUT, self-locking	1	
7	3SP-21425-00	BRACKET, rear upper 1	2	
8	95811-08055	BOLT, flange	2	
9	90202-08022	WASHER, plate	2	
10	95601-08200	NUT, self-locking	2	
11	91011-10055	BOLT, flange	1	
12	92990-10200	WASHER, plain	1	
13	90201-101J1	WASHER, plate	2	
14	95601-10200	NUT, self-locking	1	
15	91011-10120	BOLT, flange	1	
16	95611-10200	NUT, self-locking	1	
17	3JD-22178-00	TENSIONER	1	
18	93300-60816	BEARING	2	
19	90387-087K5	COLLAR	1	
20	92011-08070	BOLT, button head	1	
21	95601-08200	NUT, self-locking	1	
22	90201-081A6	WASHER, plate	2	
23	3JD-22178-10	TENSIONER	1	
24	93300-60816	BEARING	1	
25	90387-086N4	COLLAR	1	
26	92011-08070	BOLT, button head	1	
27	95601-08200	NUT, self-locking	1	
28	90201-081A6	WASHER, plate	2	



3XK1100-1160

C6

FIG. 16 FRAME



REF. NO.	PART NO.	DESCRIPTION	Q'TY	REMARKS
29	12R-82591-00	BAND	1	
30	3XJ-21717-00	DAMPER, side cover	2	
31	56A-28166-00	WRENCH, hexagon	1	

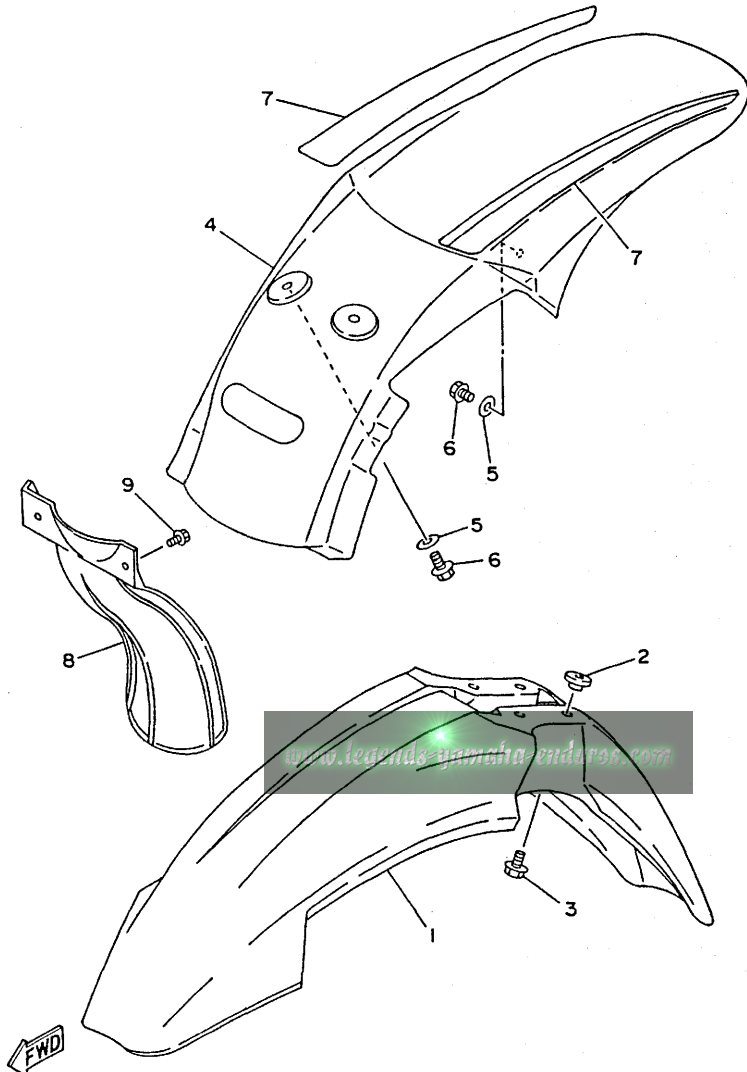
3XK1100-1160





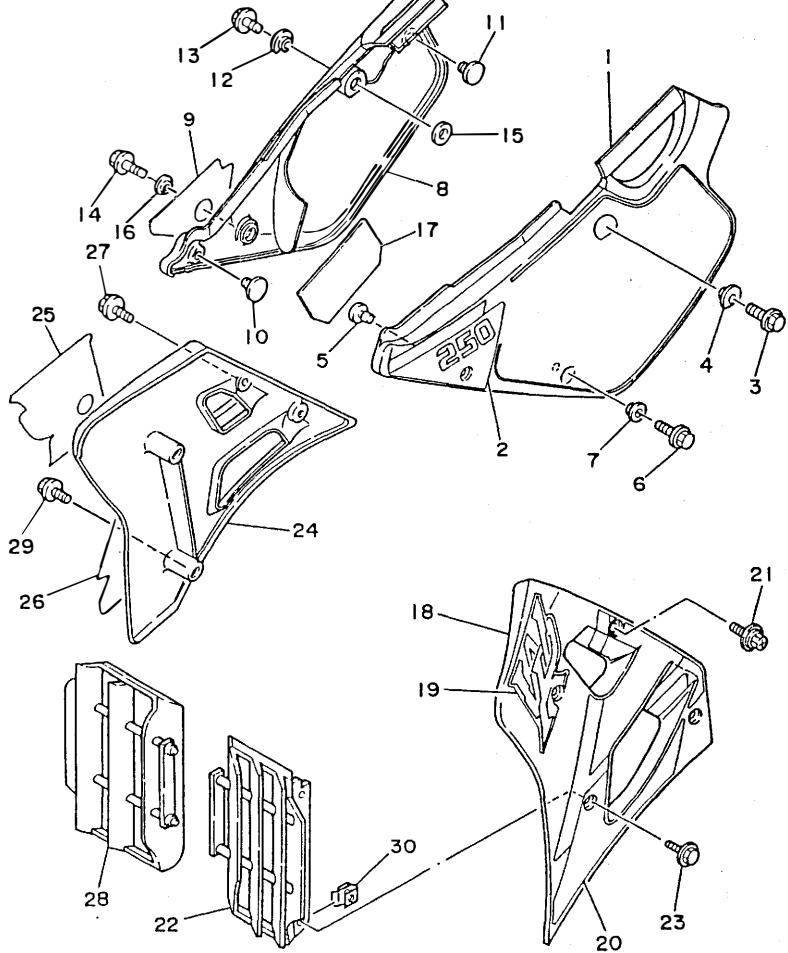
FIG. 17 FENDER

REF. NO.	PART NO.	DESCRIPTION	Q'TY	REMARKS
1	4DA-21511-00	FENDER, front	1	
2	3JD-21748-00	COLLAR	4	
3	90119-06063	BOLT, with washer	4	
4	3XJ-21611-02	FENDER, rear	1	
5	90201-06571	WASHER, plate	4	
6	90105-06553	BOLT, washer based	4	
7	4DC-2165A-00	GRAPHIC SET, rear fender	1	
8	39X-21642-00	GUARD, flap	1	
9	90119-06185	BOLT, with washer	2	



40B2100-2170

www.legendaryyamaha-enduros.com



4DC1100-2180

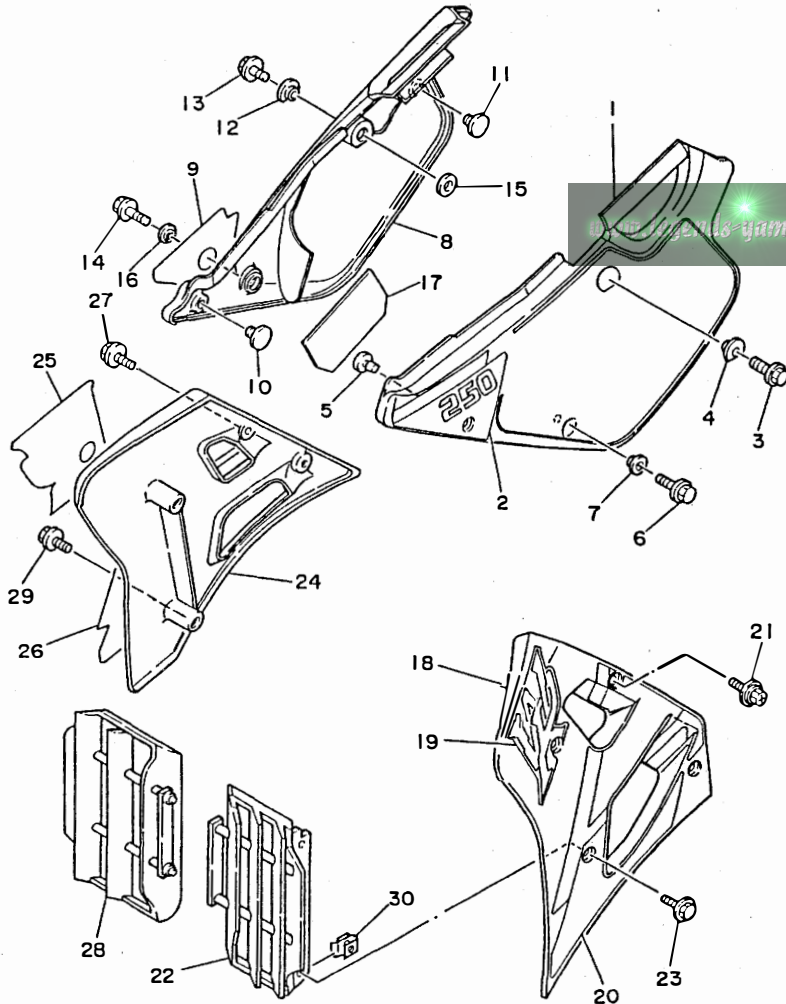
FIG. 18 SIDE COVER

REF. NO.	PART NO.	DESCRIPTION	Q'TY	REMARKS
1	3XJ-21711-01	COVER, side 1	1	
2	4DC-2173E-00	GRAPHIC 1	1	
3	95023-08020	BOLT	1	
4	90387-084X5	COLLAR	1	
5	22W-24181-00	DAMPER, locating 1	1	
6	91021-06016	BOLT, flange	1	
7	90387-064X4	COLLAR	1	
8	3XJ-21721-01	COVER, side 2	1	
9	4DC-2173F-00	GRAPHIC 2	1	
10	22W-24181-00	DAMPER, locating 1	1	
11	3JD-24181-00	DAMPER, locating 1	1	
12	90387-084X5	COLLAR	1	
13	95023-08020	BOLT	1	
14	95811-06012	BOLT, flange	1	
15	92901-08200	WASHER, plain	1	
16	90387-064X4	COLLAR	1	
17	3XJ-2174A-00	INSULATOR, side cover	1	
18	3XK-21731-01	COVER, side 3	1	
19	4DC-24244-00	GRAPHIC, fuel tank 1	1	
20	4DC-24230-00	GRAPHIC SET	1	
21	90119-06192	BOLT, with washer	2	
22	3XJ-2172A-00	PANEL 1	1	
23	90119-05193	BOLT, with washer	2	
24	3XK-21741-01	COVER, side 4	1	
25	4DC-24245-00	GRAPHIC, fuel tank 2	1	
26	4DC-24250-02	GRAPHIC SET	1	
27	90119-06192	BOLT, with washer	2	
28	3XJ-2172A-00	PANEL 1	1	

C9

FIG. 18 SIDE COVER

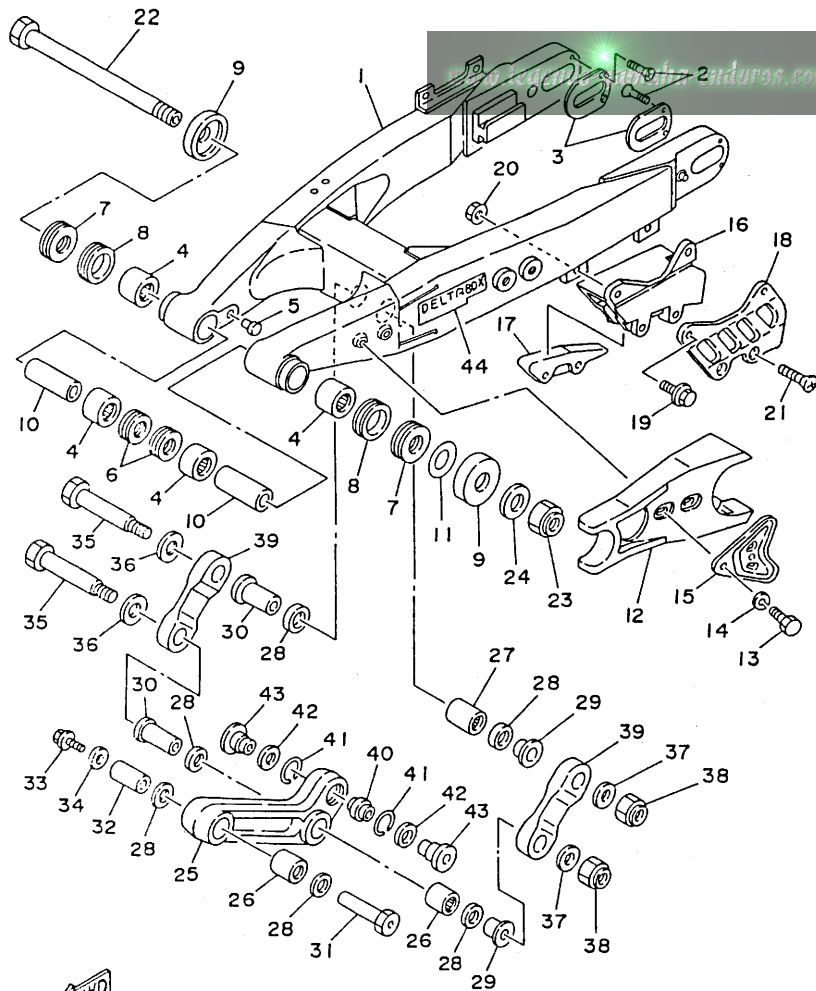
REF. NO.	PART NO.	DESCRIPTION	Q'TY	REMARKS
29	90119-05193	BOLT, with washer	2	
30	22W-21791-00	NUT	4	



FWD

4DC1100-2180

C10



40C1100-2190

FIG. 19 REAR ARM

REF. NO.	PART NO.	DESCRIPTION	Q'TY	REMARKS
1	40C-22110-00	REAR ARM COMP.	1	
2	90151-04048	SCREW, countersunk	4	
3	3XJ-22355-00	PATCH A	2	
4	93317-22262	BEARING, cylindrical	4 UR	
	93317-22263	BEARING, cylindrical	4 UR	
5	90338-10150	PLUG	2	
6	93106-22019	OIL SEAL (DC 22-28-8)	2	
7	93342-22208	BEARING, thrust	2	
8	93108-35004	OIL SEAL (35-41-8)	2	
9	3R4-22129-00	COVER, thrust 2	2	
10	90380-16158	BUSH, solid	2	
11	156-22127-00	SHIM (0.3T)	1 UN	
12	3JD-22151-00	SEAL, guard	1	
13	95023-06020	BOLT	2	
14	92990-06100	WASHER, spring	2	
15	3JD-22156-00	WASHER, plate	1	
16	3XP-22199-00	SUPPORT, chain	1	
17	3JD-22147-00	PROTECTOR, chain	1	
18	3JD-22128-00	COVER, thrust 1	1	
19	90105-06601	BOLT, washer based	2	
20	95701-06500	NUT, flange	2	
21	98701-06050	SCREW, flat head	2	
22	1LX-22141-00	SHAFT, pivot	1	
23	90185-16127	NUT, self-locking	1	
24	90201-164H4	WASHER, plate	1	
25	3XJ-2217A-00	ARM, relay	1	
26	93315-22046	BEARING, cylindrical	2	
27	93315-22046	BEARING, cylindrical	1	

C11

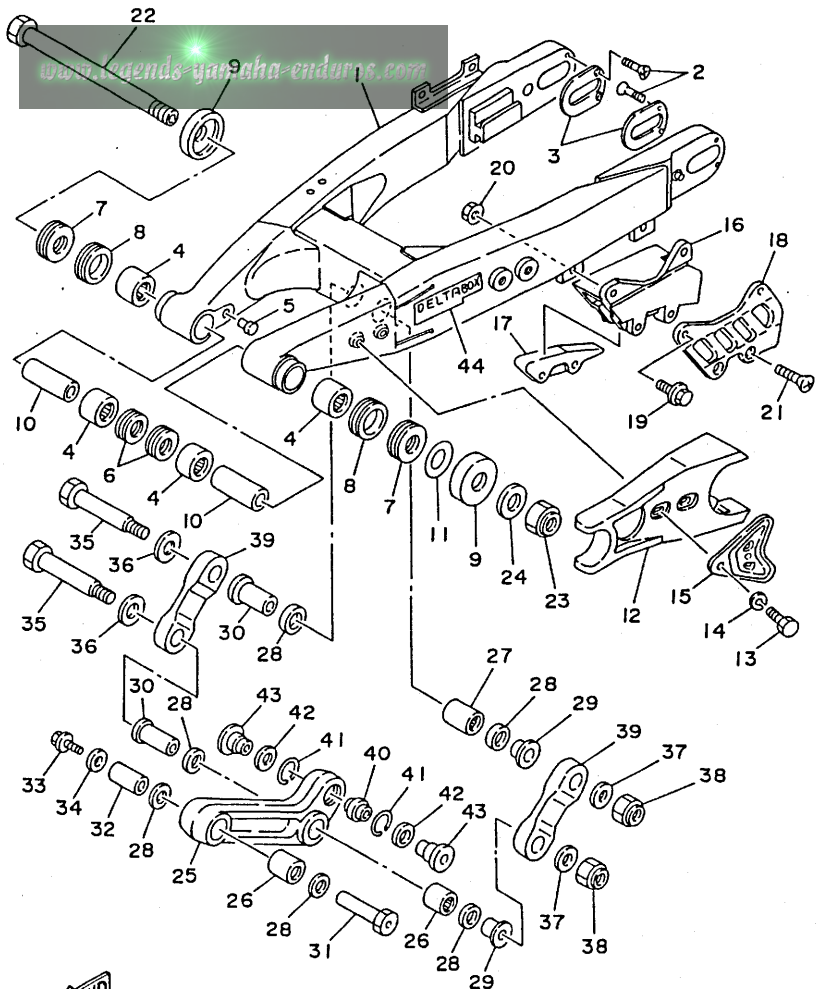


FIG. 19 REAR ARM

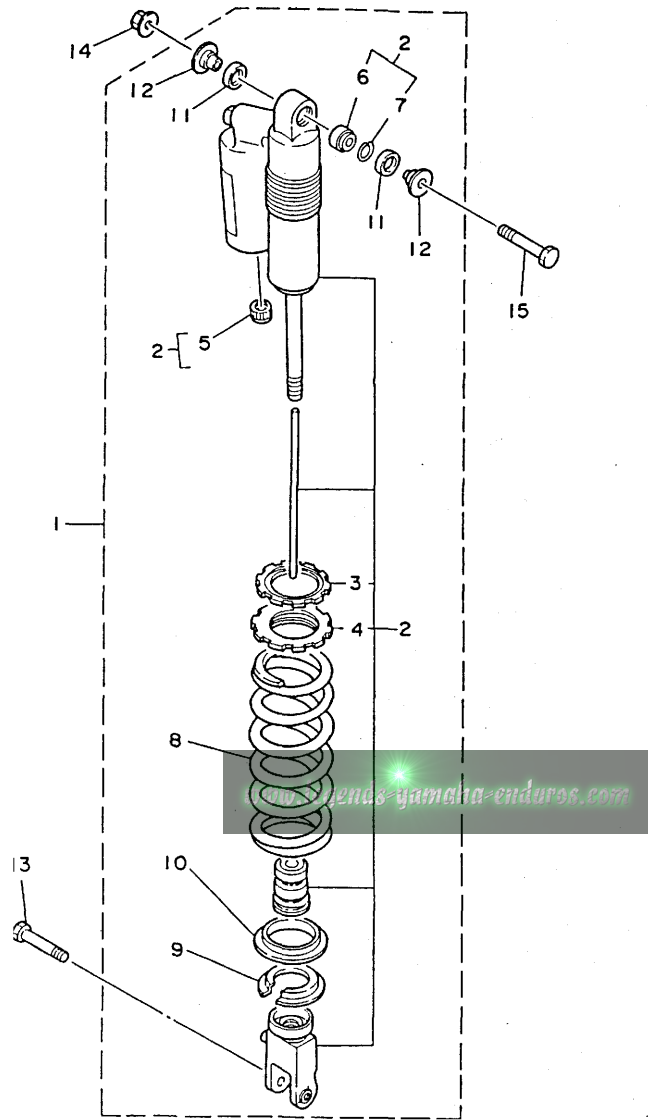
REF. NO.	PART NO.	DESCRIPTION	Q'TY	REMARKS
28	93109-20029	OIL SEAL	6	
29	90387-164N2	COLLAR	2	
30	90387-164N3	COLLAR	2	
31	90179-10544	NUT	1	
32	90387-167R5	COLLAR	1	
33	95811-10016	BOLT, flange	1	
34	90201-106F2	WASHER, plate	1	
35	90109-142F4	BOLT	2	
36	90201-164H4	WASHER, plate	2	
37	90201-14740	WASHER, plate	2	
38	90185-14070	NUT, self-locking	2	
39	3XJ-2217F-00	ROD, connecting 1	2	
40	93399-99921	BEARING	1	
41	93440-30113	CIRCLIP	2	
42	3XJ-22475-00	SEAL, dust	2	
43	90387-103X9	COLLAR	2	
44	3XJ-2218A-00	EMBLEM, rear arm	2	



4DC1100-2190

C12

FIG. 20 REAR SUSPENSION

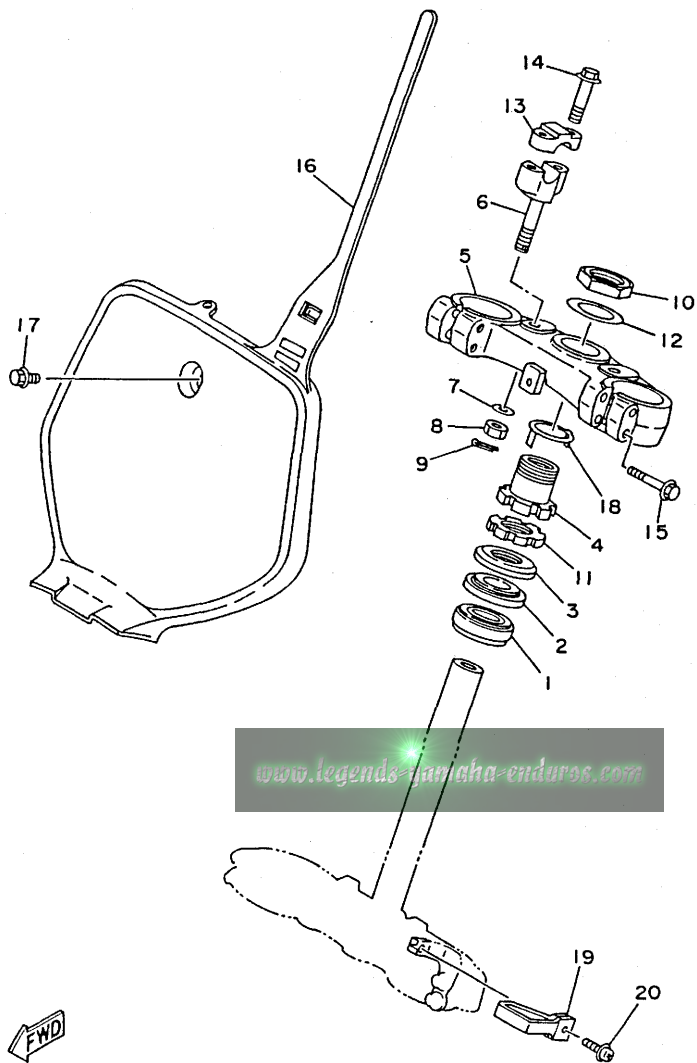


REF. NO.	PART NO.	DESCRIPTION	Q'TY	REMARKS
1	4DC-22210-00	SHOCK ABSORBER ASSY, rear	1	UR
	4DC-22210-10	SHOCK ABSORBER ASSY, rear	1	UR FOR CANADA, EUROPE
2	4DC-22201-00	.DAMPER SUB ASSY	1	UR
	4DC-22201-10	.DAMPER SUB ASSY	1	UR FOR CANADA, EUROPE
3	3SP-22234-00	..GUIDE, spring 3	1	
4	3SP-22213-00	..SEAT, spring upper	1	
5	24M-23184-00	..CAP, air valve	1	
6	3JD-22216-00	..BUSH, rear shock absorber	1	
7	43M-22274-00	..RING, stop	1	
8	3XJ-22212-11	.SPRING (K=4.8)	1	
9	3JD-22214-00	.GUIDE, spring 1	1	
10	3JD-22224-00	.GUIDE, spring 2	1	
11	3JD-22475-00	.SEAL, dust	2	
12	3XJ-22253-00	.COLLAR, distance	2	
13	90105-10614	BOLT, washer based	1	
14	95611-10200	NUT, self-locking	1	
15	3SP-22241-00	BOLT 1	1	



3XJ1100-1200

C13

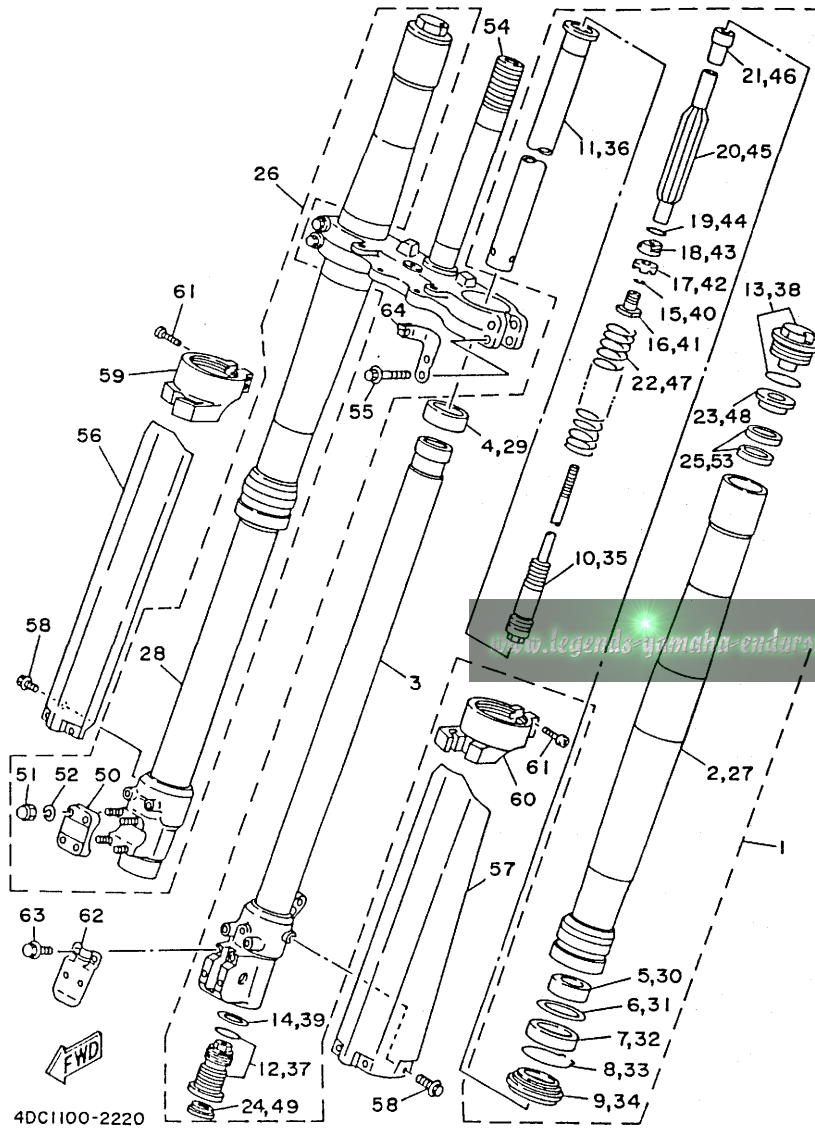


40B2100-2210

FIG. 21 STEERING

REF. NO.	PART NO.	DESCRIPTION	Q'TY	REMARKS
1	93332-00067	BEARING	1	
2	93332-00068	BEARING	1	
3	2HG-23416-00	COVER, ball race 2	1	
4	90179-28603	NUT	1	
5	4DA-23435-00	CROWN, handle	1	
6	3SP-23442-00	HOLDER, handle lower	2	
7	92990-12200	WASHER, plain	2	
8	95611-12100	NUT, u	2	
9	91401-25020	PIN, cotter	2	
10	90170-36394	NUT	1	
11	90179-28602	NUT	1	
12	90201-365M5	WASHER, plate	1	
13	3SP-23441-00	HOLDER, handle upper	2	
14	95023-08035	BOLT	4	
15	95021-08040	BOLT, flange	4	
16	4DA-23485-00	PLATE, number	1	
17	90119-06185	BOLT, with washer	1	
18	3SP-23418-00	WASHER, special	1	
19	4DA-23389-00	GUIDE, cable	1	
20	90159-05122	SCREW, with washer	1	

FIG. 22 FRONT FORK



REF. NO.	PART NO.	DESCRIPTION	Q'TY	REMARKS
1	4DC-23102-MO	FRONT FORK ASSY (L.H)	1	
2	4DA-23136-L0	.TUBE, outer 2	1	
3	4DA-23120-L0	.INNER TUBE COMP. 2	1	
4	3XJ-23171-L0	.PISTON, front fork	1	
5	3XJ-23125-L0	.METAL, slide 1	1	
6	4V4-23146-L0	.WASHER, oil seal	1	
7	4DA-23145-L0	.OIL SEAL	1	
8	4V4-23153-L0	.RING, snap	1	
9	4DA-23144-L0	.SEAL, dust	1	
10	4DA-2314A-L0	.PISTON ROD ASSY	1	
11	4DA-23170-L0	.CYLINDER COMP., front fork	1	
12	4DC-2316A-MO	.VALVE COMP.	1	
13	4DA-23111-L0	.BOLT, cap	1	
14	2HH-23158-L0	.GASKET	1	
15	3XJ-23153-L0	.RING, snap	2	
16	3XJ-23113-L0	.COLLAR	1	
17	3XJ-23166-L0	.SPACER, oil lock	1	
18	3XJ-23778-L0	.NUT	1	
19	36Y-23147-10	.O-RING	1	
20	3XJ-23142-L0	.SEAT, spring upper	1	
21	4DA-23778-L0	.NUT	1	
22	4DA-23141-L0	.SPRING, front fork (k=0.390)	1	
23	3XJ-23143-L0	.SEAT, spring lower	1	
24	3JD-2312G-L0	.PLUG	1	
25	3XJ-23364-L0	.COLLAR 2	2	
26	4DC-23103-MO	FRONT FORK ASSY (R.H)	1	
27	4DA-23136-L0	.TUBE, outer 2	1	
28	4DA-23110-L0	.INNER TUBE COMP. 1	1	

4DC1100-2220



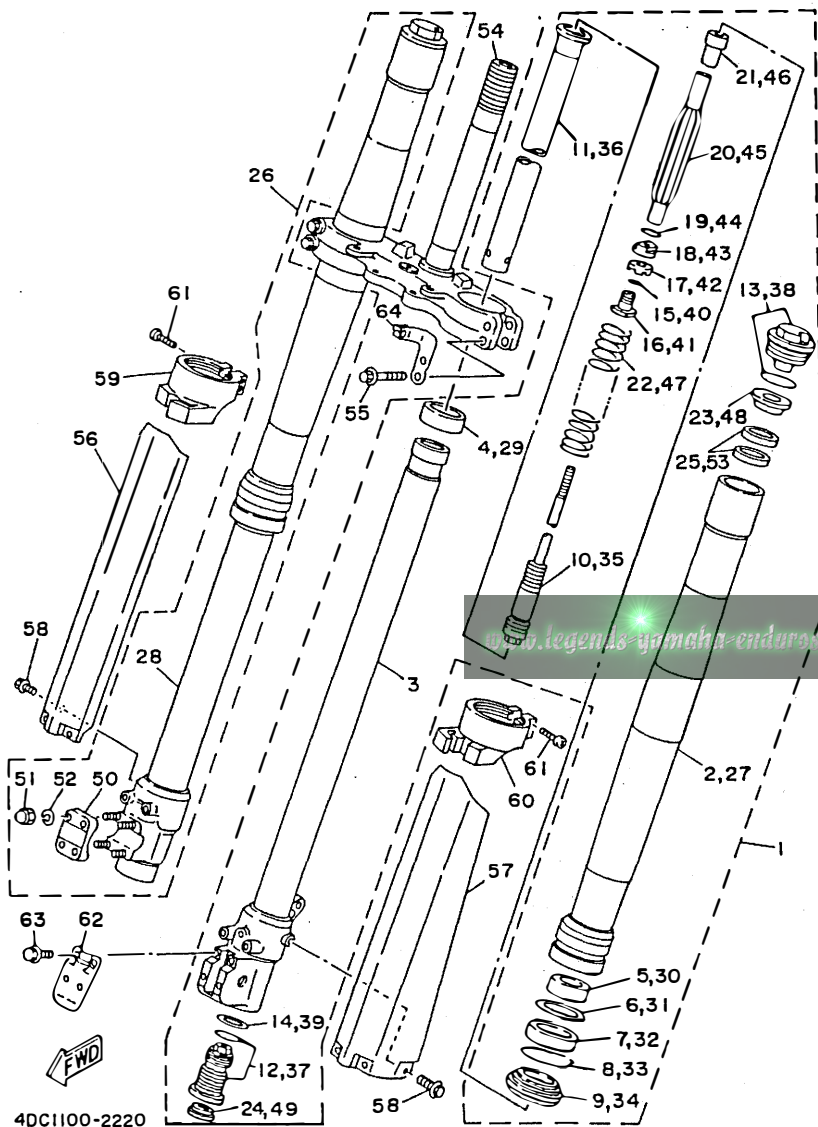
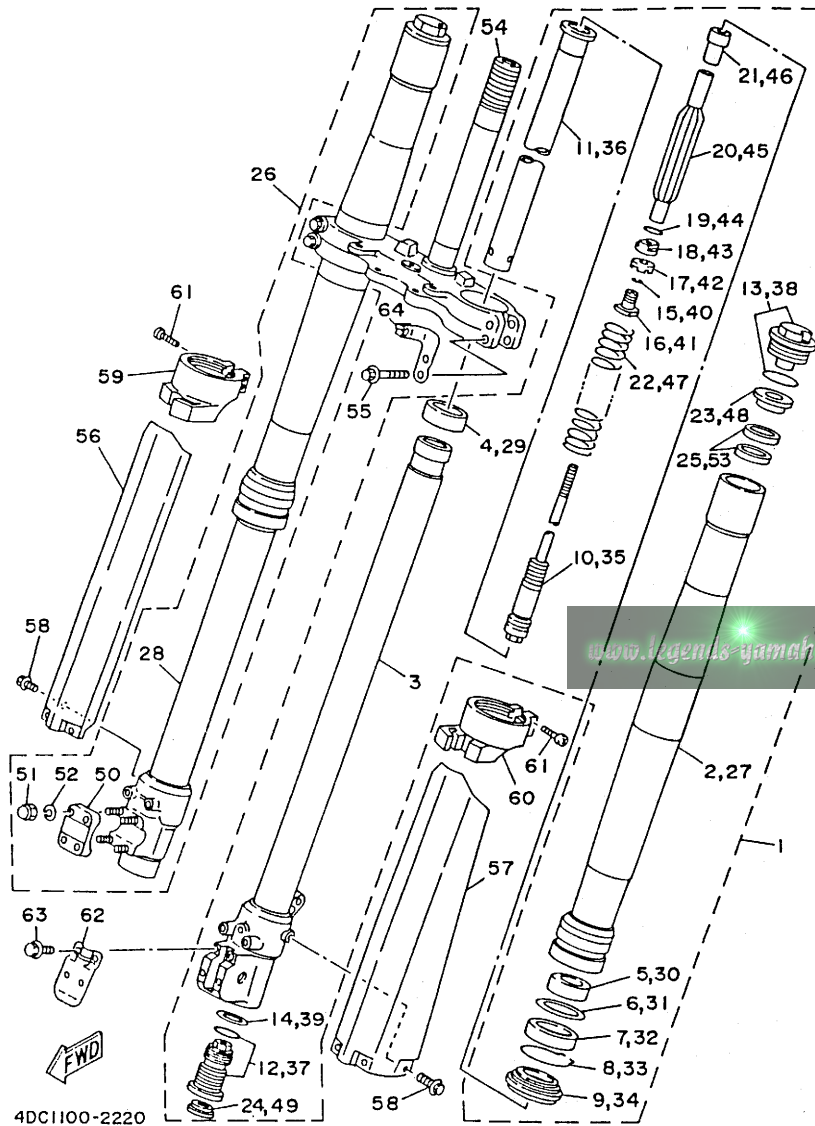


FIG. 22 FRONT FORK

REF. NO.	PART NO.	DESCRIPTION	Q'TY	REMARKS
29	3XJ-23171-L0	.PISTON, front fork	1	
30	3XJ-23125-L0	.METAL, slide 1	1	
31	4V4-23146-L0	.WASHER, oil seal	1	
32	4DA-23145-L0	.OIL SEAL	1	
33	4V4-23153-L0	.RING, snap	1	
34	4DA-23144-L0	.SEAL, dust	1	
35	4DA-2314A-L0	.PISTON ROD ASSY	1	
36	4DA-23170-L0	.CYLINDER COMP., front fork	1	
37	4DC-2316A-M0	.VALVE COMP.	1	
38	4DA-23111-L0	.BOLT, cap	1	
39	2HH-23158-L0	.GASKET	1	
40	3XJ-23153-L0	.RING, snap	2	
41	3XJ-23113-L0	.COLLAR	1	
42	3XJ-23166-L0	.SPACER, oil lock	1	
43	3XJ-23778-L0	.NUT	1	
44	36Y-23147-10	.O-RING	1	
45	3XJ-23142-L0	.SEAT, spring upper	1	
46	4DA-23778-L0	.NUT	1	
47	4DA-23141-L0	.SPRING, front fork (K=0.390)	1	
48	3XJ-23143-L0	.SEAT, spring lower	1	
49	3JD-2312G-L0	.PLUG	1	
50	4DA-23167-L0	.HOLDER, axle	1	
51	5Y3-23393-00	.NUT, special	4	
52	92990-06100	.WASHER, spring	4	
53	3XJ-23364-L0	.COLLAR 2	2	
54	4DA-23340-L0	UNDER BRACKET COMP.	1	
55	95021-08040	BOLT, flange	4	
56	4DA-2314J-L0	PROTECTOR COMP. 2	1	

FIG. 22 FRONT FORK

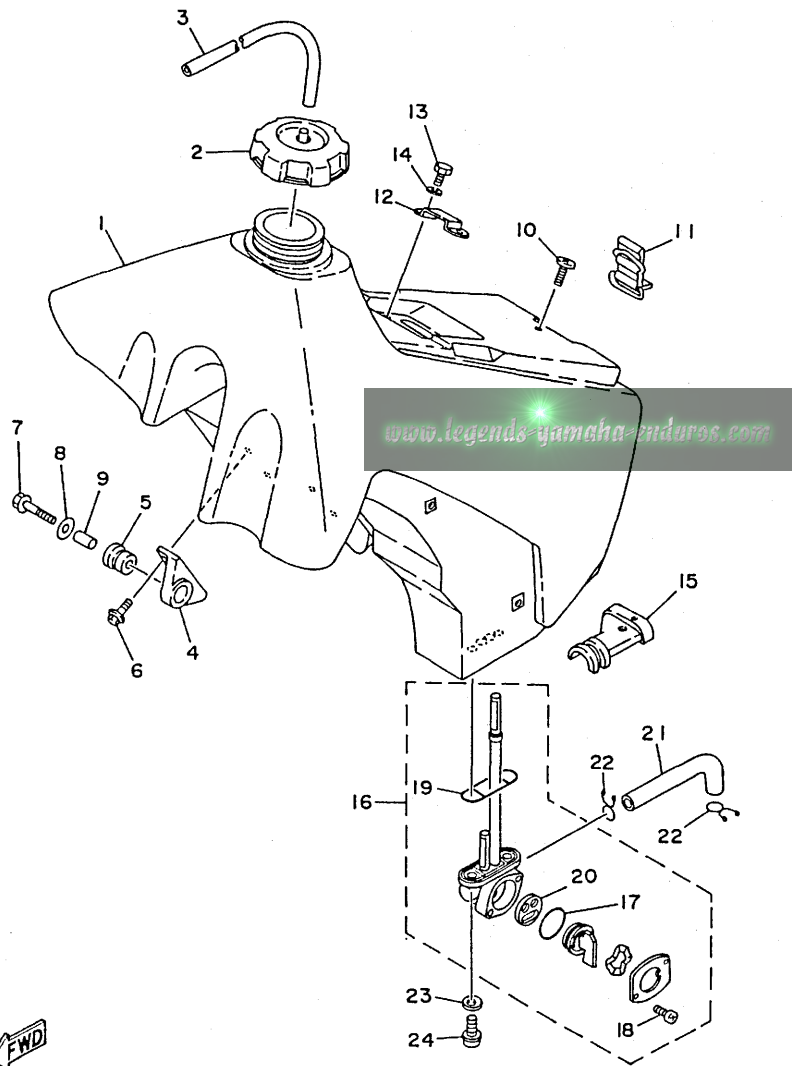


REF. NO.	PART NO.	DESCRIPTION	Q'TY	REMARKS
57	4DA-2314H-L0	PROTECTOR COMP. 1	1	
58	3SP-23356-L0	BOLT 2	6	
59	4DA-2314G-L0	PROTECTOR GUIDE COMP. 2	1	
60	4DA-2314F-L0	PROTECTOR GUIDE COMP. 1	1	
61	4V4-23194-L0	SCREW, boot band	4	
62	3SP-2314E-L0	COVER, hose	1	
63	4DA-23346-L0	BOLT 1	1	
64	4DA-2331E-L0	GUIDE, cable	1	

4DC1100-2220

D3

FIG. 23 FUEL TANK



REF. NO.	PART NO.	DESCRIPTION	Q'TY	REMARKS
1	4DC-24110-00	FUEL TANK COMP.	1	
2	1UY-24610-00	CAP ASSY	1	
3	90445-09252	HOSE	1	
4	24X-24144-00	HOLDER, damper	2	
5	90480-18549	GROMMET	2	
6	95023-06016	BOLT	4	
7	95023-06035	BOLT	2	
8	90201-06697	WASHER, plate	2	
9	90387-06027	COLLAR	2	
10	98980-06020	SCREW, bind	1	
11	3SP-24173-00	BAND, tank fitting 1	1	
12	5X6-2412F-00	BRACKET, seat	1	
13	97003-06012	BOLT	2	
14	92990-06100	WASHER, spring	2	
15	1LX-24181-00	DAMPER, locating 1	1	
16	4AA-24500-00	FUEL COCK ASSY 1	1	
17	3AJ-24534-00	.SEAL, cock	1	
18	98503-03008	.SCREW, pan head	2	
19	4X8-24512-00	.O-RING	1	
20	3AJ-24523-00	.VALVE	1	
21	4AA-24311-00	PIPE, fuel 1	1	
22	90467-10008	CLIP	2	
23	90202-05193	WASHER, plate	2	
24	90149-06011	SCREW	2	

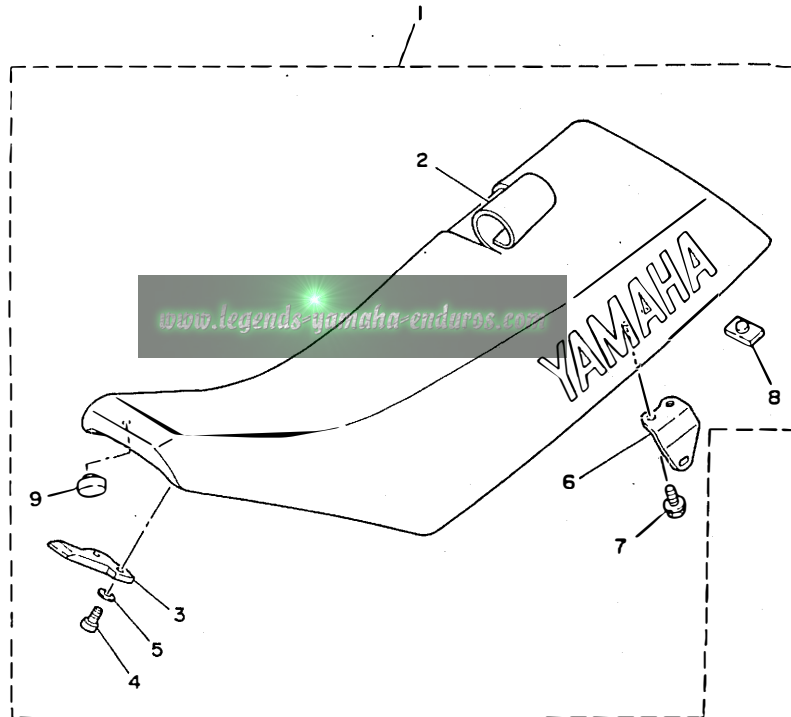


4DC1100-2230

D4

FIG. 24 SEAT

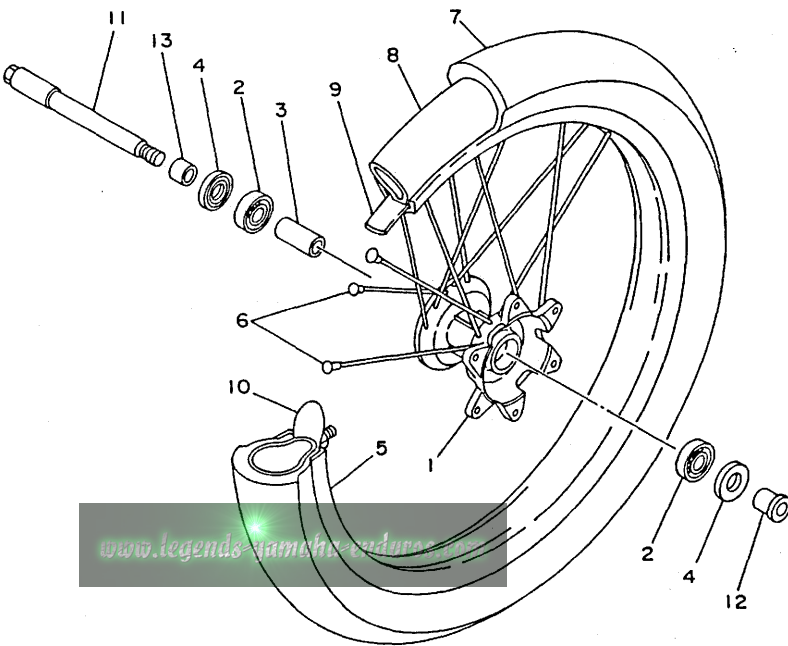
REF. NO.	PART NO.	DESCRIPTION	Q'TY	REMARKS
1	3RB-24770-20	SEMI-DOUBLE SEAT ASSY	1	
2	3RB-24731-20	.COVER, seat	1	
3	5X6-24748-10	.BRACKET, seat	1	
4	98501-06012	.SCREW, pan head	2	
5	92901-06600	.WASHER, plate	2	
6	1LX-24738-01	.BRACKET, seat	2	
7	95023-06012	.BOLT	4	
8	509-24724-00	.DAMPER, seat	1	
9	3L7-24724-00	.DAMPER, seat	2	



3XJ1100-1240

D5

FIG. 25 FRONT WHEEL



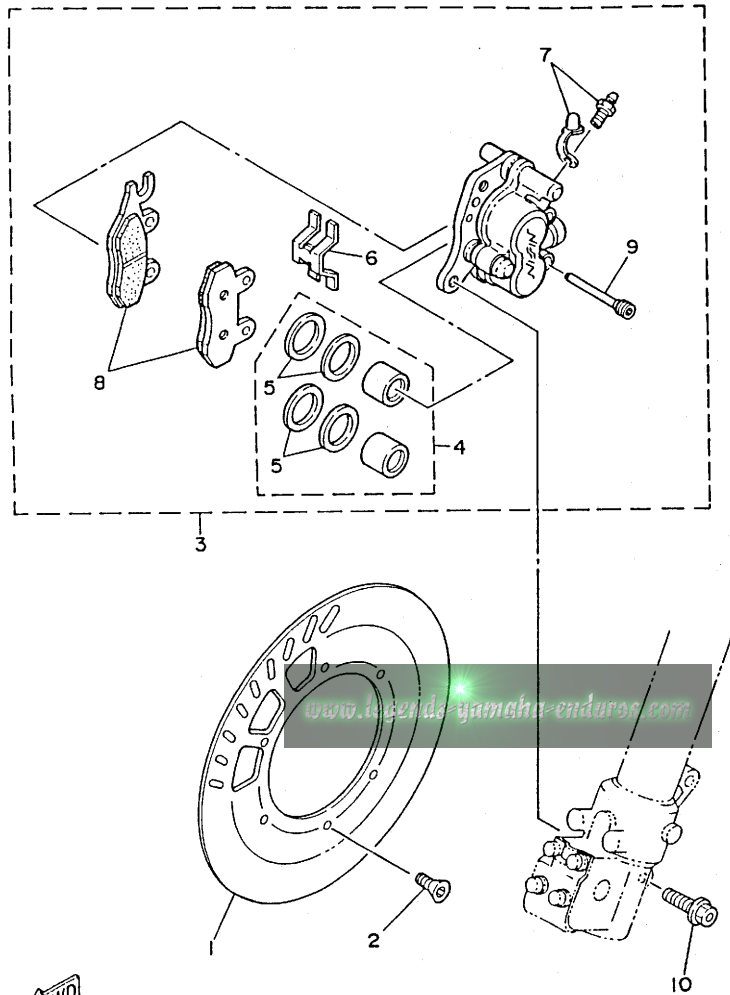
REF. NO.	PART NO.	DESCRIPTION	Q'TY	REMARKS
1	4DA-25111-00	HUB, front	1	
2	93306-00316	BEARING	2	
3	90560-17379	SPACER	1	
4	93102-22445	OIL SEAL	2	
5	94416-21499	RIM (1.60-21)	1	
6	4DA-25104-00	SPOKE SET, front	1	
7	94108-217X8	TIRE (80/100-21-ED11)	1	BRIDGESTONE
8	94209-21277	TUBE (MCS 90/90-21 TR-4)	1	BRIDGESTONE
9	94330-21084	BAND, rim (3.00-21)	1	BRIDGESTONE
10	5X2-25394-00	SPACER, bead	1	
11	4DA-25181-00	AXLE, wheel	1	
12	90387-173Y0	COLLAR	1	
13	90387-172Y9	COLLAR	1	



4DB2100-2250

D6

FIG. 26 FRONT BRAKE CALIPER

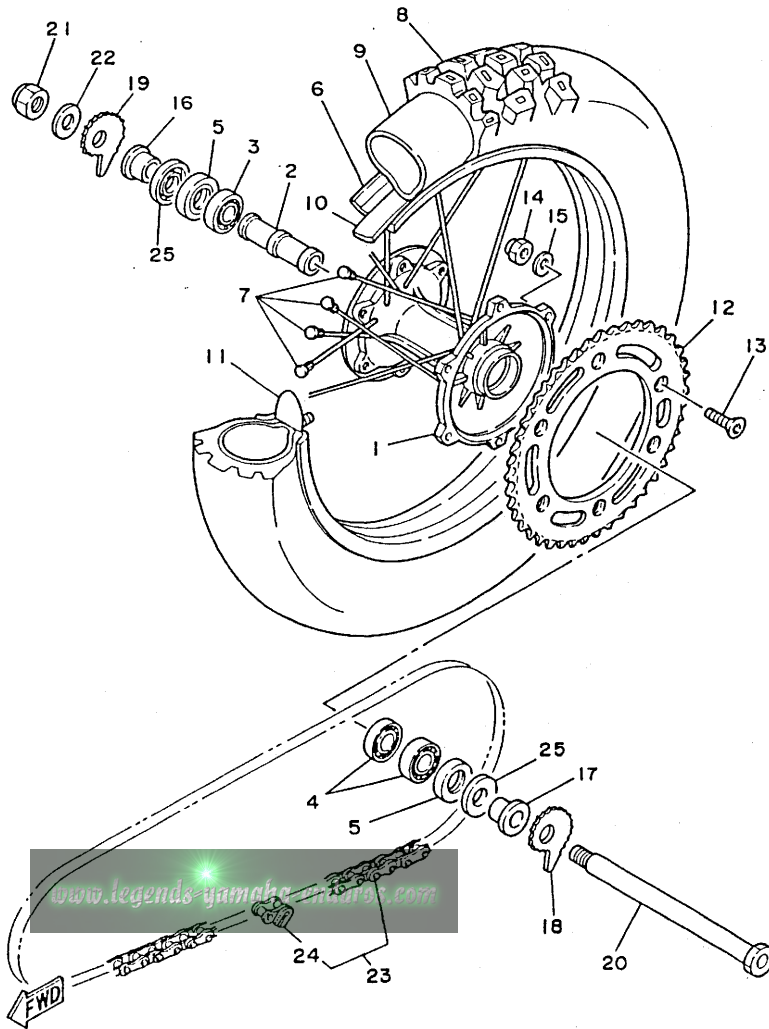


REF. NO.	PART NO.	DESCRIPTION	Q'TY	REMARKS
1	4DA-2582T-00	DISC, brake	1	
2	90149-06272	SCREW	6	
3	3SP-2580T-00	CALIPER ASSY (LEFT)	1	
4	3JD-W0057-00	.PISTON ASSY, caliper	1	
5	3JD-W0047-00	..CALIPER SEAL KIT	1	
6	3JD-25919-00	.SUPPORT, pad	1	
7	1UY-W0048-50	.BREED SCREW KIT	1	
8	3SP-W0045-00	.BRAKE PAD KIT	1	
9	3GD-25933-00	.PIN, pad	2	
10	90105-08659	BOLT, washer based	2	



4DB2100-2260

D7



4DC1100-2270

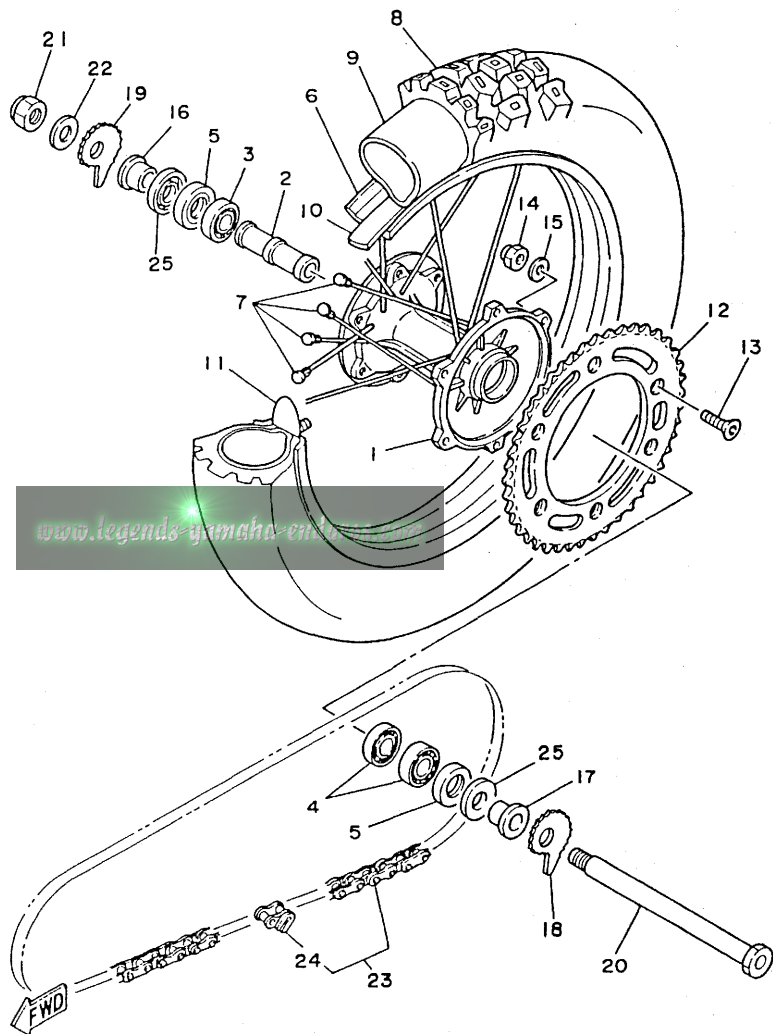
FIG. 27 REAR WHEEL

REF. NO.	PART NO.	DESCRIPTION	Q'TY	REMARKS
1	3SP-25311-00	HUB, rear	1	
2	3JD-25317-01	SPACER, bearing	1	
3	93306-00418	BEARING	1	
4	93306-00438	BEARING	2	
5	93106-28023	OIL SEAL	2	
6	94421-18498	RIM (2.15-18)	1	
7	2VN-25304-00	SPOKE SET, rear	1	
8	94111-187X9	TIRE (110/100-18-ED12)	1	BRIDGESTONE
9	94213-18232	TUBE (MC130/80-18)	1	BRIDGESTONE
10	94340-18086	BAND, rim (4.00-18)	1	BRIDGESTONE
11	39X-25394-00	SPACER, bead	2	
12	26A-25452-50	SPROCKET, driven (52T)	1	STD
	26A-25444-50	SPROCKET, driven (44T)	1	AP
	26A-25446-50	SPROCKET, driven (46T)	1	AP
	26A-25448-50	SPROCKET, driven (48T)	1	AP
	26A-25450-50	SPROCKET, driven (50T)	1	AP
13	90109-08792	BOLT	6	
14	95611-08100	NUT, u	6	
15	90201-081A6	WASHER, plate	6	
16	90387-203V0	COLLAR	1	
17	90387-200Y5	COLLAR	1	
18	3BN-25388-00	PULLER, chain 1	1	
19	3BN-25389-00	PULLER, chain 2	1	
20	3XP-25381-00	AXLE, wheel	1	
21	90185-18104	NUT, self-locking	1	
22	92901-20600	WASHER	1	
23	94581-08116	CHAIN	1	
24	94681-08011	JOINT, chain (D.I.D 520V6-FJ)	1	

D8

FIG. 27 REAR WHEEL

REF. NO.	PART NO.	DESCRIPTION	Q'TY	REMARKS
25	4V4-25367-00	COVER, hub dust	2	



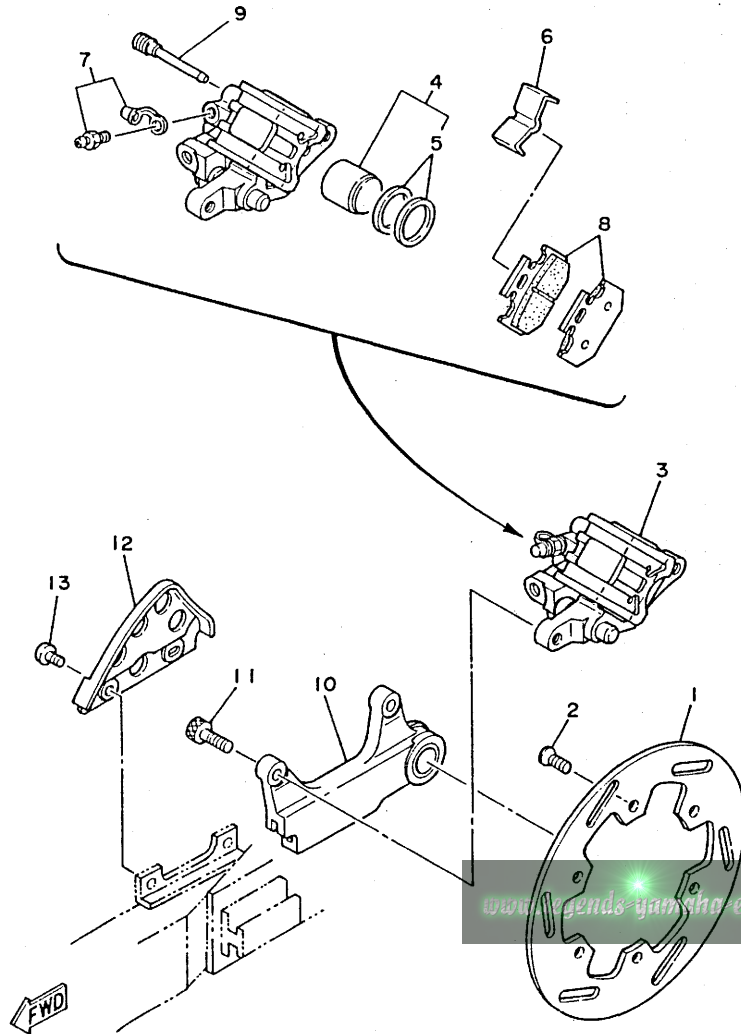
4DC1100-2270

D9



FIG. 28 REAR BRAKE CALIPER

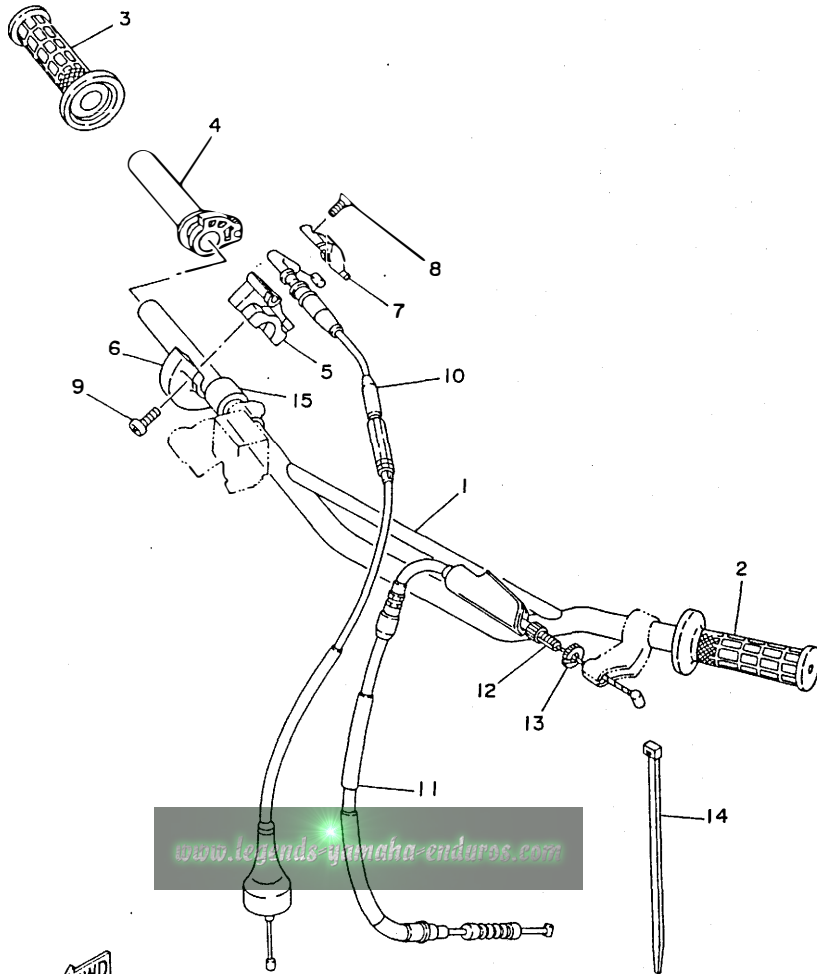
REF. NO.	PART NO.	DESCRIPTION.	Q'TY	REMARKS
1	4DA-2582W-00	DISC, rear brake 2	1	
2	90149-06272	SCREW	6	
3	4AA-2580W-00	CALIPER ASSY, rear 2	1	
4	3SP-W0057-50	.PISTON ASSY, caliper	1	
5	3JD-W0047-50	..CALIPER SEAL KIT	1	
6	3SP-25919-51	.SUPPORT, pad	1	
7	1UY-W0048-50	.BREED SCREW KIT	1	
8	3XP-W0046-00	.BRAKE PAD KIT 2	1	
9	3SP-25924-51	.PIN, pad	2	
10	3XJ-25920-00	SUPT. BRKT. ASSY	1	
11	91311-08025	BOLT	2	
12	3JD-27491-00	PROTECTOR	1	
13	92011-06012	BOLT, button head	2	



4DC1100-2280

D10

FIG. 29 STEERING HANDLE. CABLE



REF. NO.	PART NO.	DESCRIPTION	Q'TY	REMARKS
1	3XJ-26111-00	HANDLEBAR	1	
2	1LX-26241-01	GRIP (LEFT)	1	
3	1LX-26242-01	GRIP (RIGHT)	1	
4	23X-26243-00	TUBE, throttle guide	1	
5	23X-26281-00	CAP, grip upper	1	
6	431-26282-02	CAP, grip lower	1	
7	5X2-2628H-01	CAP, wire	1	
8	98706-04012	SCREW, flat head	2	
9	98506-05016	SCREW, pan head	2	
10	4AA-26311-00	CABLE, throttle 1	1	
11	3XK-26335-00	CABLE, clutch	1	
12	90123-08090	BOLT	1	
13	90179-08401	NUT	1	
14	90464-14117	CLAMP	1	
15	90560-22281	SPACER	1	

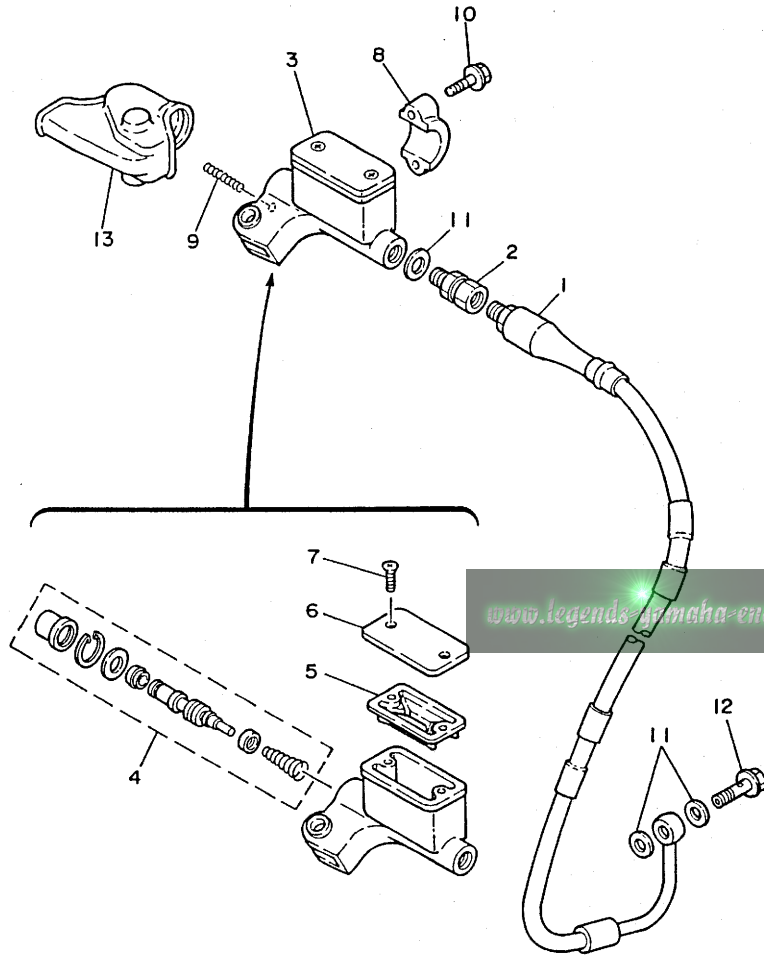


4DC1100-2290

D11

FIG. 30 FRONT MASTER CYLINDER

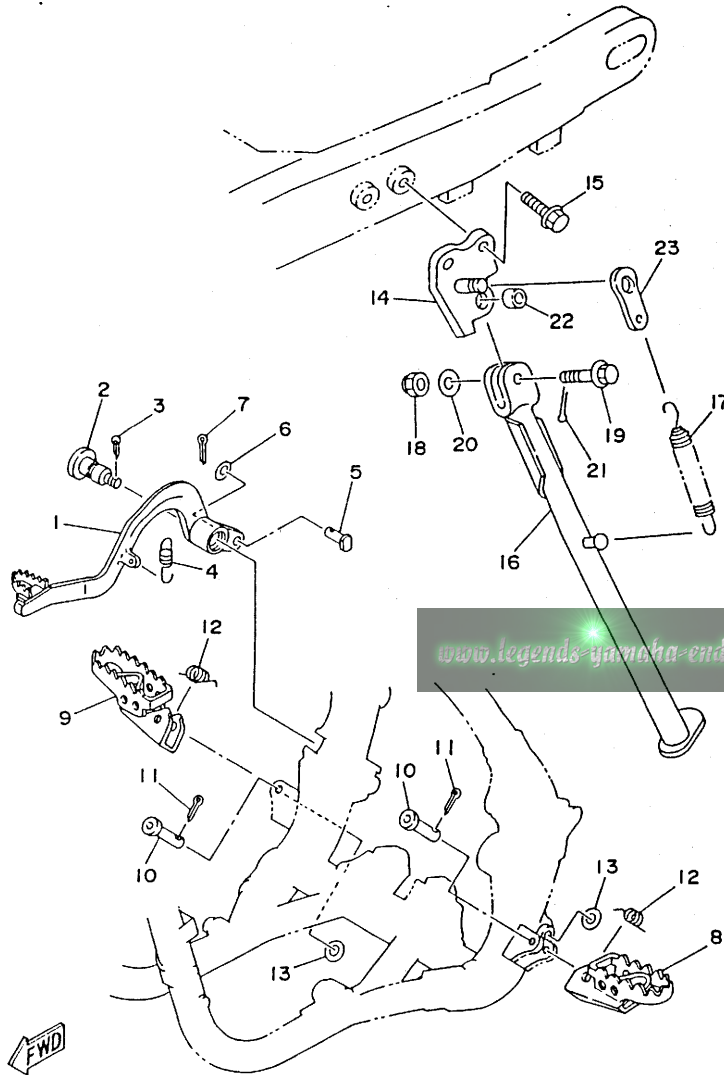
REF. NO.	PART NO.	DESCRIPTION	Q'TY	REMARKS
1	4DA-25872-00	HOSE, brake 1	1	
2	3LC-25885-00	JOINT	1	
3	3SP-25870-00	MASTER CYLINDER SUB ASSY	1	
4	3SP-W0041-00	.CYLINDER KIT, master	1	
5	56A-25854-00	.DIAPHRAGM, reservoir	1	
6	2VN-25852-00	.CAP, reservoir	1	
7	98706-04012	.SCREW, flat head	2	
8	56A-25867-00	BRACKET, master cylinder	1	
9	90501-061G2	SPRING, compression	1	
10	95026-06025	BOLT, flange	2	
11	90201-10118	WASHER, plate	3	
12	90401-10034	BOLT, union	1	
13	56A-26372-01	COVER, handle lever 1	1	



3SP1100-0300

D12

FIG. 31 STAND. FOOTREST



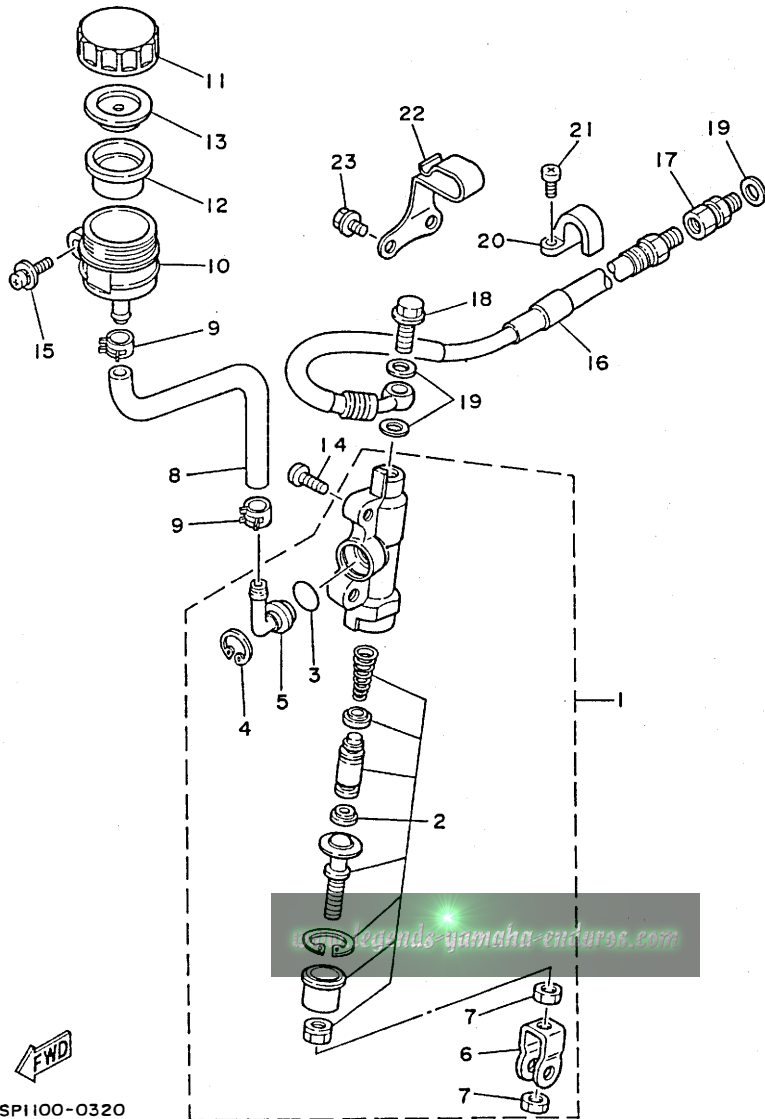
REF. NO.	PART NO.	DESCRIPTION	Q'TY	REMARKS
1	3SP-27200-00	PEDAL, brake	1	
2	4AA-27217-00	BOLT	1	
3	91401-20020	PIN, cotter	1	
4	90506-14410	SPRING, tension	1	
5	90240-08120	PIN, clevis	1	
6	92901-08600	WASHER, plate	1	
7	91401-25020	PIN, cotter	1	
8	4DA-27411-00	FOOTREST 1	1	
9	4DA-27421-00	FOOTREST 2	1	
10	90240-10117	PIN, clevis	2	
11	91401-25020	PIN, cotter	2	
12	90508-28777	SPRING, torsion	2	
13	90201-10119	WASHER, plate	2	
14	4AA-27321-00-T9	BRACKET, side stand	1	COMPETITION SILVER
15	90105-10666	BOLT, washer based	2	
16	4AA-27311-00-T9	STAND, side	1	COMPETITION SILVER
17	90507-32059	SPRING, tension	1	
18	90185-10120	NUT, self-locking	1	
19	90105-10549	BOLT, washer based	1	
20	92990-10200	WASHER, plain	1	
21	91401-25020	PIN, cotter	1	
22	90387-133Y9	COLLAR	1	
23	4AA-27263-00	BRACKET 1	1	

4DC1100-2310



FIG. 32 REAR MASTER CYLINDER

REF. NO.	PART NO.	DESCRIPTION	Q'TY	REMARKS
1	3SP-2583V-00	RR. MASTER CYLINDER ASSY	1	
2	1FK-W0042-50	.CYLINDER KIT, master	1	
3	93210-15620	.O-RING	1	
4	2VN-25866-00	.CIRCLIP	1	
5	2VN-2582A-50	.JOINT	1	
6	3SP-27222-00	.JOINT	1	
7	95303-08600	.NUT	2	
8	3JD-25895-00	HOSE, reservoir	1	
9	90467-11044	CLIP	2	
10	2VN-25894-00	TANK, reservoir	1	
11	3XP-25852-50	CAP, reservoir	1	
12	2VN-25854-00	DIAPHRAGM, reservoir	1	
13	2VN-25855-00	BUSH, diaphragm	1	
14	92013-06016	BOLT	2	
15	90159-06056	SCREW, with washer	1	
16	3SP-25873-00	HOSE, brake 2	1	
17	3LC-25885-00	JOINT	1	
18	90401-10034	BOLT, union	1	
19	90201-10118	WASHER, plate	3	
20	2VM-25876-00	HOLDER, brake hose 2	1	
21	97780-50510	SCREW, tapping	2	
22	90462-12195	CLAMP	1	
23	95023-06008	BOLT	2	

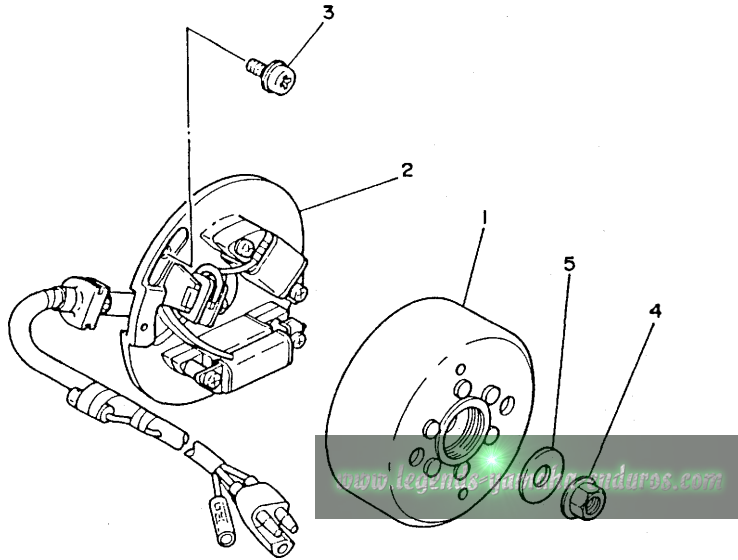


3SP1100-0320

D14

FIG. 33 GENERATOR

REF. NO.	PART NO.	DESCRIPTION	Q'TY	REMARKS
1	3SP-85550-10	ROTOR ASSY	1	
2	3RB-85560-11	BASE ASSY	1	
3	90149-06011	SCREW	2	
4	90179-10394	NUT	1	
5	90201-10774	WASHER, plate	1	

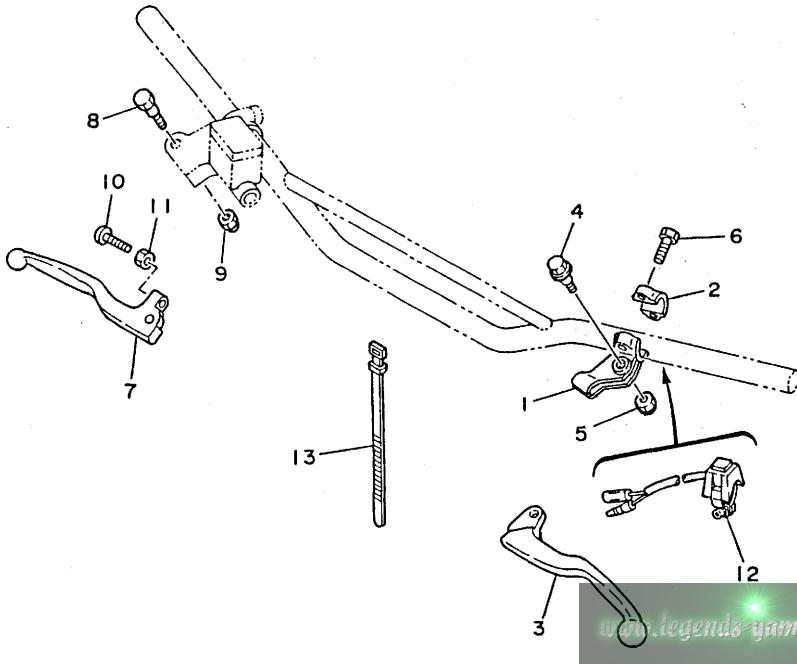


3RB2100-0330

D15

FIG. 34 HANDLE SWITCH. LEVER

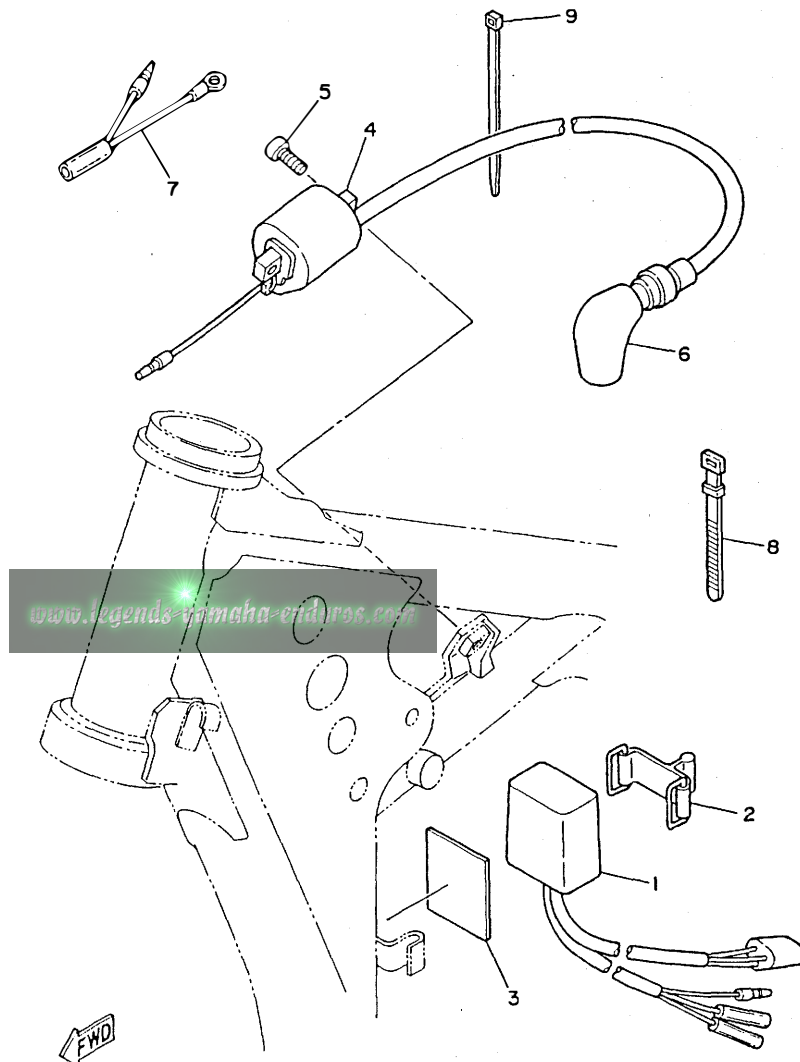
REF. NO.	PART NO.	DESCRIPTION	Q'TY	REMARKS
1	38V-82911-00	HOLDER, lever 1	1	
2	38V-82913-00	HOLDER, lever lower 1	1	
3	23X-83912-00	LEVER 1	1	
4	90109-06799	BOLT	1	
5	95616-06100	NUT, u	1	
6	97006-05016	BOLT	2	
7	3SP-83922-00	LEVER 2	1	
8	90109-06577	BOLT	1	
9	95616-06100	NUT, u	1	
10	90149-06153	SCREW	1	
11	90170-06010	NUT	1	
12	23X-83976-00	SWITCH, handle 1	1	
13	437-83936-01	BAND, switch cord	2	



3SP1100-0340

E2

FIG. 35 ELECTRICAL 1



REF. NO.	PART NO.	DESCRIPTION	Q'TY	REMARKS
1	3RB-85540-11	C.D.I. UNIT ASSY	1	
2	5H9-21376-00	BAND, tool	1	
3	3RB-85547-01	DAMPER	1	
4	3SR-82310-10	IGNITION COIL ASSY	1	
5	97021-06016	BOLT	2	
6	2TV-82370-00	PLUG CAP ASSY	1	WITH NOISE SUPPRESSOR
7	5X1-82519-01	WIRE, earth lead	1	
8	25G-83936-01	BAND, switch cord	1	
9	12R-82591-00	BAND	1	

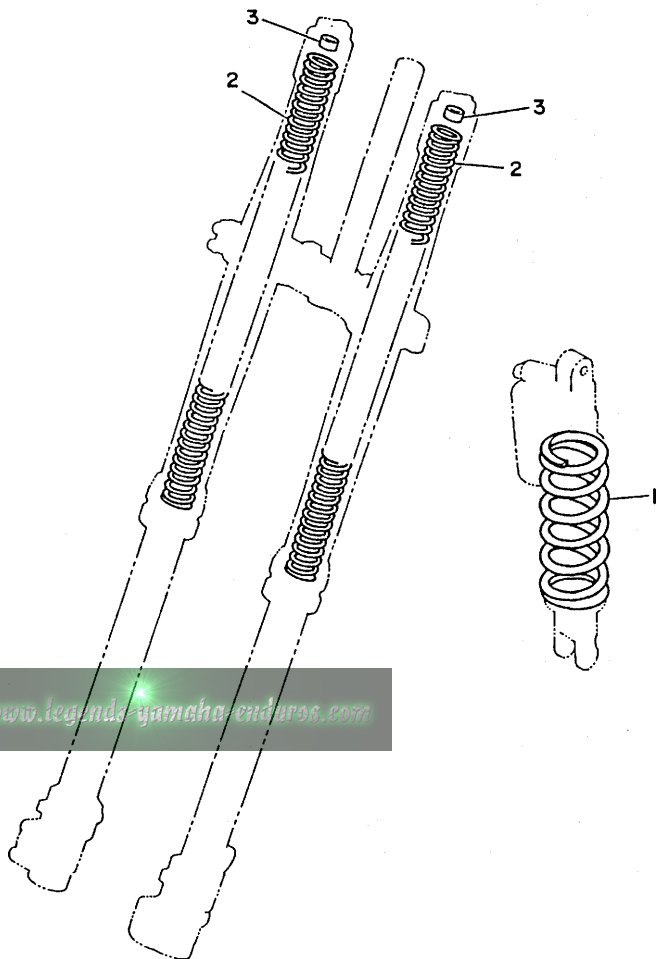
3SP1100-0350

E3



FIG. 36 ALTERNATE (CHASSIS)

REF. NO.	PART NO.	DESCRIPTION	Q'TY	REMARKS
1	3XJ-22212-01	SPRING (K=4.6)	1	AP (SOFT)
	4DA-22212-20	SPRING (K=5.0)	1	AP (HARD)
2	4DA-23141-30	SPRING, front fork (K=0.380)	2	AP (SOFT)
	4DA-23141-50	SPRING, front fork (K=0.400)	2	AP (HARD)
3	4DA-23364-L0	COLLAR 2	1	UN



www.legendaryamahaenduros.com



3XJ1100-1360

E4

FIG. 37 REPAIR KIT

REF. NO.	PART NO.	DESCRIPTION	Q'TY	REMARKS
1	4DA-11630-00	PISTON ASSY (STD)	1	
2	4DA-11631-00-B0	.PISTON (STD)	1	
3	4DA-11601-00	.PISTON RING SET (STD)	1	
4	2VM-11633-01	.PIN, piston	1	
5	93450-19052	.CIRCLIP	2	
6	3SP-11650-02	CONNECTING ROD ASSY	1	
7	5X5-11651-02	.ROD, connecting	1	
8	3JE-11681-01	.PIN, crank 1	1	
9	90209-25085	.WASHER	2	
10	93310-425T1	.BEARING, cylindrical	1	
11	93310-418E9	.BEARING, cylindrical	1	

[www.legends-yamaha-enduros.com](http://www.legends-yamaha-enduros.com)

E5

NUMERICAL INDEX

PART NO.	GRID NO.	PART NO.	GRID NO.	PART NO.	GRID NO.	PART NO.	GRID NO.	PART NO.	GRID NO.	PART NO.	GRID NO.
3SP-W0041-00	D-12	3SP-11992-10	B- 3	5Y9-14158-00	B- 9	2VM-16356-00	B-15	3XK-21731-01	C- 9	3XJ-23125-L0	D- 2
1FK-W0042-50	D-14	3SP-11993-10	B- 3	1W3-14175-00	B-10	3SP-16357-00	B-15	3XJ-2174A-00	C- 9	4DA-23136-L0	C-15
3SP-W0045-00	D- 7	2VM-11995-00	B- 3	363-14184-00	B- 9	2VM-16371-00	B-15	3XK-21741-01	C- 9		C-15
3XP-W0046-00	D-10	4DC-1240A-00	B- 7	2N7-14185-00	B- 9	4DA-16381-00	B-15	3JD-21748-00	C- 8	4DA-2314A-L0	C-15
3JD-W0047-00	D- 7	3SP-12422-00	B- 6	537-14186-00	B- 9	2VM-17121-00	C- 2	22W-21791-00	C-10		D- 2
3JD-W0047-50	D-10	2VM-12428-10	B- 6	2HH-14197-00	B- 9	3RB-17131-00	C- 2	4DC-22110-00	C-11	3SP-2314E-L0	D- 3
1UY-W0048-50	D- 7	2VM-12450-00	B- 6	510-14197-00	B- 9	3RB-17141-10	C- 2	156-22127-00	C-11	4DA-2314F-L0	D- 3
	D-10	2VM-12459-00	B- 6	3XJ-1441A-00	B- 8	3RB-17151-00	C- 2	3JD-22128-00	C-11	4DA-2314G-L0	D- 3
3JD-W0057-00	D- 7	3SP-12460-00	B- 7	3JD-14451-00	B- 8	3RB-17211-00	C- 2	3R4-22129-00	C-11	4DA-2314H-L0	D- 3
3SP-W0057-50	D-10	22W-12462-00	B- 7	4AA-14453-00	B- 8	2VM-17221-00	C- 2	1LX-22141-00	C-11	4DA-2314J-L0	D- 2
3JE-W1132-00	B- 2	10V-12469-01	B- 6	3RB-14458-00	B- 8	3RB-17231-00	C- 2	3JD-22147-00	C-11	4DA-23141-L0	C-15
3XJ-W1441-01	B- 8	24X-12469-00	B- 7	3JD-14459-00	B- 8	3RB-17241-10	C- 2	3JD-22151-00	C-11		D- 2
5X4-Y113F-10	B- 2	4DC-12476-00	B- 7	3JD-14462-00	B- 8	3RB-17251-00	C- 2	3JD-22156-00	C-11	4DA-23141-30	E- 4
3SP-Y1543-00	B-13	4DC-1248A-00	B- 7	3JD-14477-00	B- 8	3RB-17411-00	C- 2	3XJ-2217A-00	C-11	4DA-23141-50	E- 4
4DA-11111-01	B- 2	4DC-12482-00	B- 7	4DA-14610-00	B-11	2VM-17421-00	C- 2	3XJ-2217F-00	C-12	3XJ-23142-L0	C-15
4DA-1131A-00	B- 2	4DC-12483-00	B- 7	3R4-14613-00	B-11	4L0-17471-00	B-12	3JD-22178-00	C- 6		D- 2
3JE-1131N-10	B- 2	3SP-12485-00	B- 7	3JE-14615-00	B-11	3XK-18101-01	C- 5	3JD-22178-10	C- 6	3XJ-23143-L0	C-15
4DA-11311-00	B- 2	353-13115-01	B-12	3XK-1469A-10	B-11	2VM-18110-00	C- 5	3XJ-2218A-00	C-12		D- 2
2VM-11351-10	B- 2	4DC-13565-00	B- 8	39X-14747-00	B-11	3XK-18122-00	C- 5	3XP-22199-00	C-11	4DA-23144-L0	C-15
3XK-11400-01	B- 5	4DC-13610-00	B- 8	3XK-14753-10	B-11	3XK-18140-00	C- 4	4DC-22201-00	C-13		D- 2
3XK-11412-01	B- 5	3SP-13613-00	B- 8	565-14771-00	B-11	4DA-18172-00	C- 5	4DC-22201-10	C-13	4DA-23145-L0	C-15
3XK-11422-01	B- 5	4DA-13616-00	B- 8	483-14781-01	B-11	3XJ-18173-00	C- 5	4DC-22210-00	C-13		D- 2
4DA-11601-00	B- 5	2K7-13621-10	B- 8	23X-1490J-00	B- 9	3XK-18177-00	C- 4	4DC-22210-10	C-13	4V4-23146-L0	C-15
	E- 5	26A-1410A-00	B-10	2VM-15111-03	B-12	3XJ-18178-00	C- 5	3XJ-22212-01	E- 4		D- 2
4DA-11630-00	E- 5	4DC-14101-00	B- 9	4V4-15118-00	B-12	3XJ-18182-00	C- 5	3XJ-22212-11	C-13	36Y-23147-10	C-15
4DA-11631-00-A0	B- 5	23X-14103-00	B- 9	2VM-15121-01	B-12	3XJ-18184-00	C- 5	4DA-22212-20	E- 4		D- 2
4DA-11631-00-B0	B- 5	23X-14104-00	B- 9	1G8-15362-00	B-13	3XJ-18185-00	C- 5	3SP-22213-00	C-13	3XJ-23153-L0	C-15
	E- 5	23X-14106-00	B- 9	3SP-15381-00	B-12	2VM-18511-00	C- 4	3JD-22214-00	C-13		D- 2
4DA-11631-00-C0	B- 5	23X-14107-35	B- 9	2VM-15411-00	B-13	2VM-18512-00	C- 4	3JD-22216-00	C-13	4V4-23153-L0	C-15
4DA-11631-00-DO	B- 5	2X8-14112-35	B- 9	3SP-15415-00	B-13	2VM-18513-00	C- 4	3JD-22224-00	C-13		D- 2
2VM-11633-01	B- 5	2X8-14112-40	B- 9	2VM-15421-00	B-13	1LX-18531-00	C- 4	3SP-22234-00	C-13	2HH-23158-L0	C-15
	E- 5	2X8-14112-45	B- 9	2VM-15451-10	B-13	34K-18535-00	C- 4	3SP-22241-00	C-13		D- 2
3SP-11650-02	E- 5	510-14115-00	B- 9	2VM-15462-10	B-13	3XK-18540-01	C- 4	3XJ-22253-00	C-13	4DC-2316A-M0	C-15
5X5-11651-02	B- 5	431-14131-00	B- 9	3SP-15463-10	B-13	4DA-21110-00-UJ	C- 6	43M-22274-00	C-13		D- 2
	E- 5	510-14141-R0	B- 9	3SP-15620-01	B-14	3XK-21123-00-T9	C- 6	3XJ-22355-00	C-11	3XJ-23166-L0	C-15
3JE-11681-01	B- 5	510-14141-R2	B- 9	3SP-15621-01	B-14	5H9-21376-00	E- 3	3JD-22475-00	C-13		D- 2
	E- 5	510-14141-R4	B- 9	3R4-15641-00	B-14	3SP-21425-00	C- 6	3XJ-22475-00	C-12	4DA-23167-L0	D- 2
5X5-11911-01	B- 4	193-14142-35	B- 9	38V-15651-00	B-14	4DA-21511-00	C- 8	4DC-23102-M0	C-15	4DA-23170-L0	C-15
5X5-11912-01	B- 4	193-14142-40-A1	B- 9	2VM-15661-00	B-14	3XJ-21611-02	C- 8	4DC-23103-M0	C-15		D- 2
1LX-11915-00	B- 3	193-14142-45-A1	B- 9	2VM-15664-00	B-14	39X-21642-00	C- 8	4DA-23110-L0	C-15	3XJ-23171-L0	C-15
5X4-11921-02	B- 4	137-14143-70	B- 9	2VM-16111-00	B-15	4DC-2165A-00	C- 8	4DA-23111-L0	C-15		D- 2
3JE-11922-00	B- 4	137-14143-72	B- 9	3SP-16150-00	B-15	3XJ-21711-01	C- 9		D- 2	24M-23184-00	C-13
3JE-11931-00	B- 4	137-14143-74	B- 9	2K7-16154-00	B-15	3XJ-21717-00	C- 7	3XJ-23113-L0	C-15	4V4-23194-L0	D- 3
3JE-11937-00	B- 2	509-14145-00	B-10	3SP-16154-00	B-15	3XJ-2172A-00	C- 9		D- 2	4DA-2331E-L0	D- 3
5X4-11952-00	B- 4	3R4-14146-00	B-10	2VM-16181-00	B-15		C- 9	3JD-23126-L0	C-15	4DA-23340-L0	D- 2
24X-11953-01	B- 4	558-14147-00	B-10	3XK-16321-00	B-15	3XJ-21721-01	C- 9		D- 2	4DA-23346-L0	D- 3
3XK-11956-00	B-15	3SP-14149-00	B-10	3XK-16325-00	B-15	4DC-2173E-00	C- 9	4DA-23120-L0	C-15	3SP-23356-L0	D- 3
3SP-11990-00	B- 4	5X5-14153-00	B-10	2VM-16351-01	B-15	4DC-2173F-00	C- 9	3XJ-23125-L0	C-15	3XJ-23364-L0	C-15

www.legends-yamaha-enduros.com



NUMERICAL INDEX

PART NO.	GRID NO.	PART NO.	GRID NO.	PART NO.	GRID NO.	PART NO.	GRID NO.	PART NO.	GRID NO.	PART NO.	GRID NO.
3XJ-23364-L0	D- 2	39X-25394-00	D- 8	4AA-27321-00-T9	D-13	90119-06192	C- 9	90201-12166	C- 4	90387-203V0	D- 8
4DA-23364-L0	E- 4	5X2-25394-00	D- 6	4DA-27411-00	D-13	90122-06030	B- 8	90201-14740	C-12	90387-252F6	B-15
4DA-23389-00	C-14	26A-25444-50	D- 8	4DA-27421-00	D-13	90123-08090	D-11	90201-154E9	B- 4	90387-25663	C- 2
5Y3-23393-00	D- 2	26A-25446-50	D- 8	3JD-27491-00	D-10	90149-06011	D- 4	90201-164H4	C-11	90401-10034	D-12
2HG-23416-00	C-14	26A-25448-50	D- 8	56A-28166-00	C- 7		D-15		C-12		D-14
3SP-23418-00	C-14	26A-25450-50	D- 8	3SR-82310-10	E- 3	90149-06153	E- 2	90201-17545	B-14	90430-06016	B-13
4DA-23435-00	C-14	26A-25452-50	D- 8	2TV-82370-00	E- 3	90149-06272	D- 7	90201-20278	C- 2	90430-06166	B- 6
3SP-23441-00	C-14	3SP-2580T-00	D- 7	5X1-82519-01	E- 3		D-10	90201-20358	B-14	90430-12207	B-12
3SP-23442-00	C-14	4AA-2580W-00	D-10	12R-82591-00	C- 7	90151-04048	C-11	90201-22555	C- 2	90445-086A8	B-12
4DA-23485-00	C-14	2VN-2582A-50	D-14		E- 3	90157-06048	B-14	90201-253K0	C- 2	90445-09252	D- 4
3XJ-23778-L0	C-15	4DA-2582T-00	D- 7	38V-82911-00	E- 2	90159-05122	C-14	90201-365M5	C-14	90446-09013	B- 7
	D- 2	4DA-2582W-00	D-10	38V-82913-00	E- 2	90159-06016	B-15	90202-05193	D- 4	90450-15041	B- 7
4DA-23778-L0	C-15	3SP-2583V-00	D-14	23X-83912-00	E- 2	90159-06056	D-14	90202-08022	C- 6	90450-17036	B- 7
	D- 2	2VN-25852-00	D-12	3SP-83922-00	E- 2	90170-06010	E- 2	90208-18025	B-15	90450-22052	B- 7
4DC-24110-00	D- 4	3XP-25852-50	D-14	25G-83936-01	E- 3	90170-20255	B-15	90209-06096	B- 8	90450-28014	B- 7
5XC-2412F-00	D- 4	2VN-25854-00	D-14	437-83936-01	E- 2	90170-36394	C-14	90209-17311	C- 2	90460-51109	B- 8
24X-24144-00	D- 4	56A-25854-00	D-12	23X-83976-00	E- 2	90176-08026	B- 2	90209-18135	C- 2	90460-68230	B- 8
3SP-24173-00	D- 4	2VN-25855-00	D-14	3RB-85540-11	E- 3	90179-08401	D-11	90209-22082	C- 2	90462-12195	D-14
1LX-24181-00	D- 4	2VN-25866-00	D-14	3RB-85547-01	E- 3	90179-10394	D-15	90209-25085	B- 5	90464-14117	D-11
22W-24181-00	C- 9	56A-25867-00	D-12	3SP-85550-10	D-15	90179-10544	C-12		E- 5	90464-16039	B- 8
	C- 9	3SP-25870-00	D-12	3RB-85560-11	D-15	90179-18172	B-15	90215-20231	B-15	90467-09006	B- 7
3JD-24181-00	C- 9	4DA-25872-00	D-12	90101-06664	C- 5	90179-20255	C- 3	90215-21239	C- 3	90467-10008	D- 4
4DC-24230-00	C- 9	3SP-25873-00	D-14	90101-08461	C- 6	90179-28602	C-14	90240-08120	D-13	90467-11044	D-14
4DC-24244-00	C- 9	2VM-25876-00	D-14	90105-06553	C- 8	90179-28603	C-14	90240-10117	D-13	90468-26048	B-14
4DC-24245-00	C- 9	3LC-25885-00	D-12	90105-06601	C-11	90185-10120	D-13	90280-03017	B- 5	90480-15528	B- 7
4DC-24250-02	C- 9		D-14	90105-08592	C- 6	90185-14070	C-12	90338-10150	C-11	90480-16233	B-11
4AA-24311-00	D- 4	2VN-25894-00	D-14	90105-08659	D- 7	90185-16127	C-11	90340-12097	B-12	90480-18276	B- 7
4AA-24500-00	D- 4	3JD-25895-00	D-14	90105-10549	D-13	90185-18104	D- 8	90380-16158	C-11	90480-18549	D- 4
4X8-24512-00	D- 4	3JD-25919-00	D- 7	90105-10614	C-13	90201-057H5	B- 4	90387-060A7	B-11	90501-052G5	C- 5
3AJ-24523-00	D- 4	3SP-25919-51	D-10	90105-10666	D-13	90201-06407	B-11	90387-06027	D- 4	90501-061G2	D-12
3AJ-24534-00	D- 4	3XJ-25920-00	D-10	90109-064F4	B-11	90201-06570	B- 7	90387-064X4	C- 9	90501-13720	B-14
1UY-24610-00	D- 4	3SP-25924-51	D-10	90109-06577	E- 2	90201-06571	C- 8		C- 9	90501-23598	B-15
3L7-24724-00	D- 5	3GD-25933-00	D- 7	90109-06799	E- 2	90201-06697	D- 4	90387-084X5	C- 9	90501-240F4	B- 4
509-24724-00	D- 5	3XJ-26111-00	D-11	90109-08792	D- 8	90201-080E2	C- 6		C- 9	90506-14410	D-13
3RB-24731-20	D- 5	1LX-26241-01	D-11	90109-142F4	C-12	90201-08087	B- 2	90387-086N4	C- 6	90507-20030	B-11
1LX-24738-01	D- 5	1LX-26242-01	D-11	90116-08392	B- 2	90201-081A6	C- 6	90387-087K5	C- 6	90507-32059	D-13
5X6-24748-10	D- 5	23X-26243-00	D-11	90116-08394	B- 2		C- 6	90387-100Y1	B-11	90508-14783	B- 4
3RB-24770-20	D- 5	5X2-2628H-01	D-11	90116-10314	B- 2		D- 8	90387-102W0	B- 2	90508-26561	C- 4
4DA-25104-00	D- 6	23X-26281-00	D-11		B- 2	90201-08612	B-11	90387-103X9	C-12	90508-28777	D-13
4DA-25111-00	D- 6	431-26282-02	D-11	90116-10547	B- 2	90201-087A9	B-14	90387-133Y9	D-13	90508-291A8	C- 5
4DA-25181-00	D- 6	4AA-26311-00	D-11		B- 2	90201-08759	B- 6	90387-152F2	B- 4	90508-30743	B-14
2VN-25304-00	D- 8	3XK-26335-00	D-11	90119-05193	C- 9	90201-08784	B- 6	90387-160H4	B-12	90560-06383	B- 7
3SP-25311-00	D- 8	56A-26372-01	D-12		C-10	90201-101J1	C- 6	90387-164N2	C-12	90560-07382	B- 7
3JD-25317-01	D- 8	3SP-27200-00	D-13	90119-06063	C- 8	90201-101I8	D-12	90387-164N3	C-12	90560-08213	B- 4
4V4-25367-00	D- 9	4AA-27217-00	D-13	90119-06185	B- 8		D-14	90387-167R5	C-12	90560-12280	C- 5
3XP-25381-00	D- 8	3SP-27222-00	D-14		C- 8	90201-10119	D-13	90387-172Y9	D- 6	90560-17379	D- 6
3BN-25388-00	D- 8	4AA-27263-00	D-13		C-14	90201-106F2	C-12	90387-173Y0	D- 6	90560-22281	D-11
3BN-25389-00	D- 8	4AA-27311-00-T9	D-13	90119-06192	C- 9	90201-10774	D-15	90387-200Y5	D- 8	91011-10055	C- 6

NUMERICAL INDEX

PART NO.	GRID NO.	PART NO.	GRID NO.	PART NO.	GRID NO.	PART NO.	GRID NO.	PART NO.	GRID NO.	PART NO.	GRID NO.
91011-10120	C- 6	93210-09192	B- 3	93604-08071	B- 2	95601-05100	B- 8				
91021-06016	C- 9	93210-14104	B-13	93604-10011	B- 6	95601-08200	C- 6				
91311-08025	D-10	93210-15620	D-14		B-13		C- 6				
91316-04006	B- 4	93210-16275	B- 6	93604-29184	B- 4		C- 6				
91316-06050	B-12	93210-19216	B-14	93608-33046	C- 5	95601-10200	C- 6				
91316-06070	B-12	93210-270A8	B- 2	93834-13029	C- 2	95611-08100	D- 8				
91401-20020	D-13	93210-56743	B-11	93834-14049	C- 2	95611-08200	C- 6				
91401-25020	C-14	93210-77363	B- 2	93834-15075	C- 3	95611-10200	C- 6				
	D-13	93211-11770	B- 2	94108-217X8	D- 6		C-13				
	D-13	93300-60814	B- 4	94111-187X9	D- 8	95611-12100	C-14				
	D-13		B- 4	94209-21277	D- 6	95616-06100	E- 2				
92011-06012	D-10	93300-60816	C- 6	94213-18232	D- 8		E- 2				
92011-08070	C- 6		C- 6	94330-21084	D- 6	95701-06500	C-11				
	C- 6	93306-00316	D- 6	94340-18096	D- 8	95701-10500	B- 2				
92013-06016	D-14	93306-00418	D- 8	94416-21499	D- 6	95811-06010	B-12				
92901-05100	B- 9	93306-00438	D- 8	94421-18498	D- 8	95811-06012	C- 9				
92901-05600	B- 3	93306-20540	C- 2	94581-08116	D- 8	95811-08055	C- 6				
	B- 3	93306-20574	C- 2	94681-08011	D- 8	95811-10016	C-12				
92901-06600	B- 7	93306-37802	B- 5	94702-00323	B- 2	97001-05016	B- 3				
	B-13		B- 5	94702-00326	B- 2	97003-06012	D- 4				
	D- 5	93310-230T7	B-15	95021-06070	B-13	97006-05016	E- 2				
92901-08200	C- 9	93310-418E9	B- 5	95021-06080	B- 6	97011-06025	C- 5				
92901-08600	D-13		E- 5	95021-08040	C-14	97021-05020	B- 3				
92901-20600	D- 8	93310-425T1	B- 5		D- 2	97021-05030	B- 4				
92990-03100	B- 8		E- 5	95023-06008	B-11	97021-06016	E- 3				
92990-05100	B- 4	93311-41734	C- 2		B-13	97021-06050	B- 7				
92990-06100	B- 7	93311-62035	C- 2		D-14	97780-50510	D-14				
	B- 8	93315-11206	B-15	95023-06010	B- 8	98501-05012	B- 2				
	C-11	93315-22046	C-11		B-11	98501-05016	B- 9				
	D- 2		C-11	95023-06012	B-11	98501-06012	B-12				
	D- 4	93317-22262	C-11		B-13		D- 5				
92990-10200	C- 6	93317-22263	C-11		D- 5	98501-06030	B-13				
	D-13	93332-00067	C-14	95023-06016	D- 4	98503-03008	D- 4				
92990-12200	C-14	93332-00068	C-14	95023-06020	B- 8	98506-05008	B- 3				
93102-12106	C- 5	93340-21505	B- 4		C-11	98506-05016	D-11				
93102-12224	B-15	93342-22208	C-11	95023-06025	B- 6	98580-03008	B- 8				
93102-20309	B-14	93399-99921	C-12		B- 6	98701-06012	B-12				
93102-22363	B- 5	93410-20038	C- 2		B-13	98701-06050	C-11				
93102-22445	D- 6	93410-22039	C- 2	95023-06030	B-13	98706-04012	D-11				
93102-32M07	C- 2	93440-25084	C- 2	95023-06035	D- 4		D-12				
93103-10147	C- 6	93440-30113	C-12	95023-08012	B-11	98980-06020	D- 4				
93103-40091	B- 5	93450-19052	B- 5	95023-08020	B-14	99009-06600	B- 6				
93104-08040	B- 4		E- 5		C- 9	99009-17400	B-14				
93104-16074	B- 2	93501-04011	B-14		C- 9	99510-10114	B- 2				
93106-22019	C-11	93511-32027	B-15	95023-08030	B-11	99510-12016	B-12				
93106-28023	D- 8	93521-64032	B- 4	95023-08035	C-14		B-13				
93108-35004	C-11	93603-14179	B- 4	95026-06025	D-12	99530-14016	B- 2				
93109-20029	C-12	93603-22028	B- 6	95303-08600	D-14						

www.legends-yamaha-enduros.com

[www.legends-yamaha-enduros.com](http://www.legends-yamaha-enduros.com)