



YAMAHA

PARTS LIST

MODEL **YZ80D**

www.legends-yamaha-enduros.com

NOTICE

ALL PART NUMBER NUMBERS CONTAINED IN THIS CATALOG ARE COMPRISED OF TEN DIGITS. WHEN ORDERING, PLEASE ADD TWO ZEROS TO THE END OF EACH PART NUMBER REQUESTED TO CONVERT THE TEN DIGITS INTO THE NEW TWELVE DIGIT NUMBERS.

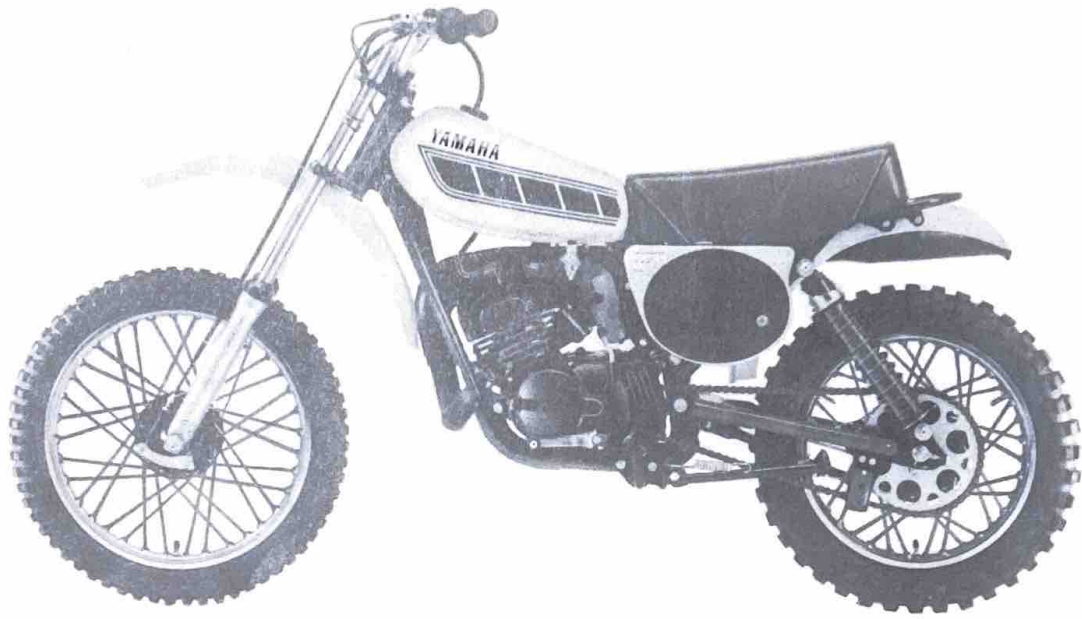
YAMAHA MOTOR CO., LTD.

COPYRIGHT © ALL RIGHTS RESERVED
NO PART OF THIS PUBLICATION MAY BE REPRODUCED WITHOUT PERMISSION

YAMAHA

PARTS LIST

www.legends-yamaha-motor.com **MODEL YZ80D**



www.legendos-yamaha-enduros.com

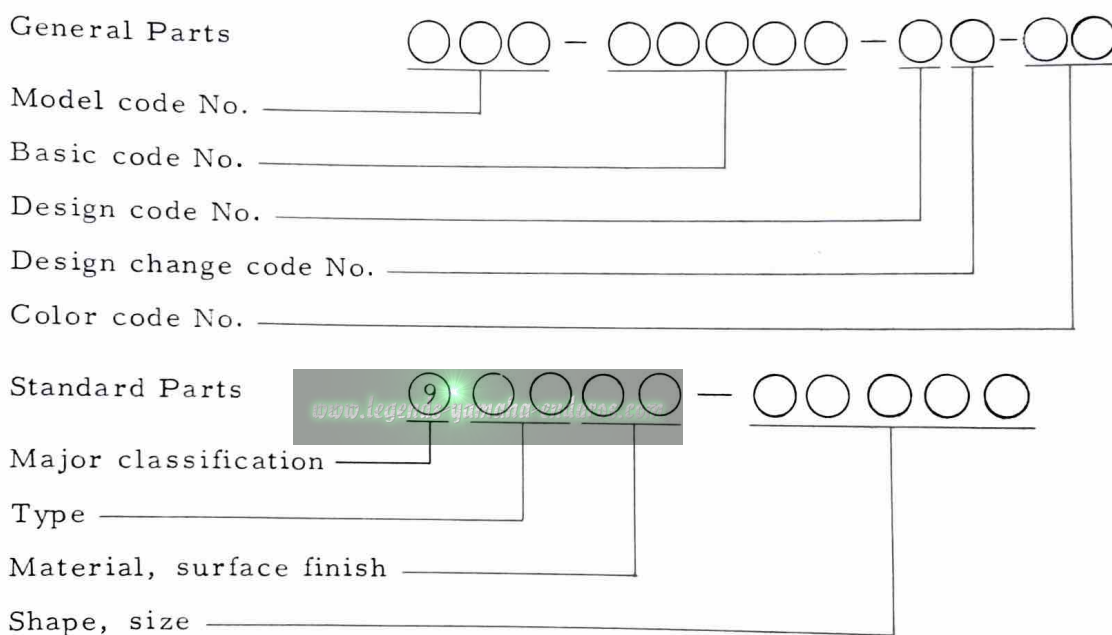


FOREWORD

This Part List relates to the parts in use for the Yamaha YZ80D.
 When you are ordering replacement parts for the YZ80D, refer to this
 Parts List and quote both part numbers and part names correctly.

1. Structure of Part No.

Yamaha parts are divided largely into two categories; general parts
 and standard parts, and each part No. has the following structure:



Note: Every standard No. begins with 9.

2. How to Use this Parts List

(1) Except for steel balls (whose size is indicated in inches), the
 size of all parts is indicated in millimeters in the following manner.

Hose (rubber or vinyl) Inside diameter - length

O-ring Section area - inside diameter

Washer, shim, collar Inside diameter - outside diameter -
 thickness (length)

(2) Parts, which are to be supplied in the form of assemblies, are
 listed with an indentation of one letter's space, and a dot (.) is put

against the name of each part. If any two different assemblies (e. g. , right and left side components) consist of almost the same type components, these two assemblies are listed in two lines, and then the names of component parts are listed in the subsequent lines with an indention as mentioned earlier. The quantity of parts is given in the following manner; that is, in the case of parts being the same in type between the right and left, a total quantity of parts is given. On the other hand, if the right and left side parts are different in type, the quantity of part(s) on each side is given.

Example

Description	Q'ty
CARBURETOR ASS'Y, left	1
CARBURETOR ASS'Y, right	1
. JET, pilot	2
. NOZZLE, main	2
⋮	
. LEVER, starter, left	1
. LEVER, starter, right	1

(3) Key to Symbols

U. R.	Use size (thickness) and/or number as required
U. N.	Use as many as you need
T	Number of teeth in a gear
V	Voltage for light bulbs
S	"S" type oil seal or "S" type circlip
SD	"SD" type oil seal
SO	"SO" type oil seal
SW	"SW" type oil seal
E	"E" type circlip
R	"R" type circlip
F/No.	Frame No. (Applicable machine No.)

- (4) The right and left in relation to parts are determined on the basis of the rider facing toward the front.
- (5) This Parts List is based on the model in the production line on Aug., 10, 1976. Accordingly, if any modifications which have been made to parts will be announced in the Yamaha Parts News. It is advisable that according to the Yamaha Parts News, You will make necessary corrections to the Parts List on hand to keep it up-to dated.

CONTENTS

ENGINE

Fig. 1	Crankcase . Cylinder	1
Fig. 2	Crankcase Cover	3
Fig. 3	Crank . Piston	5
Fig. 4	Clutch	9
Fig. 5	Transmission	11
Fig. 6	Shifter 1	15
Fig. 7	Shifter 2	17
Fig. 8	Kick Starter	19
Fig. 9	Intake	21
Fig. 10	Carburetor	23
Fig. 11	Exhaust	27
Fig. 12	Flywheel Magneto	29

CHASSIS

www.legends-yamaha-enduros.com

Fig. 13	Frame . Side Cover	33
Fig. 14	Rear Arm . Rear Cushion	35
Fig. 15	Stand . Footrest . Brake Pedal	37
Fig. 16	Front Fender . Rear Fender	39
Fig. 17	Front Fork	41
Fig. 18	Steering	43
Fig. 19	Handle . Wire	45
Fig. 20	Fuel Tank	47
Fig. 21	Seat	49
Fig. 22	Front Wheel	51
Fig. 23	Rear Wheel	53
Fig. 24	Electrical	57
Fig. 25	Exclusive Parts For CANADA	61

REPAIR KIT

Fig. 26 Repair Kit 65

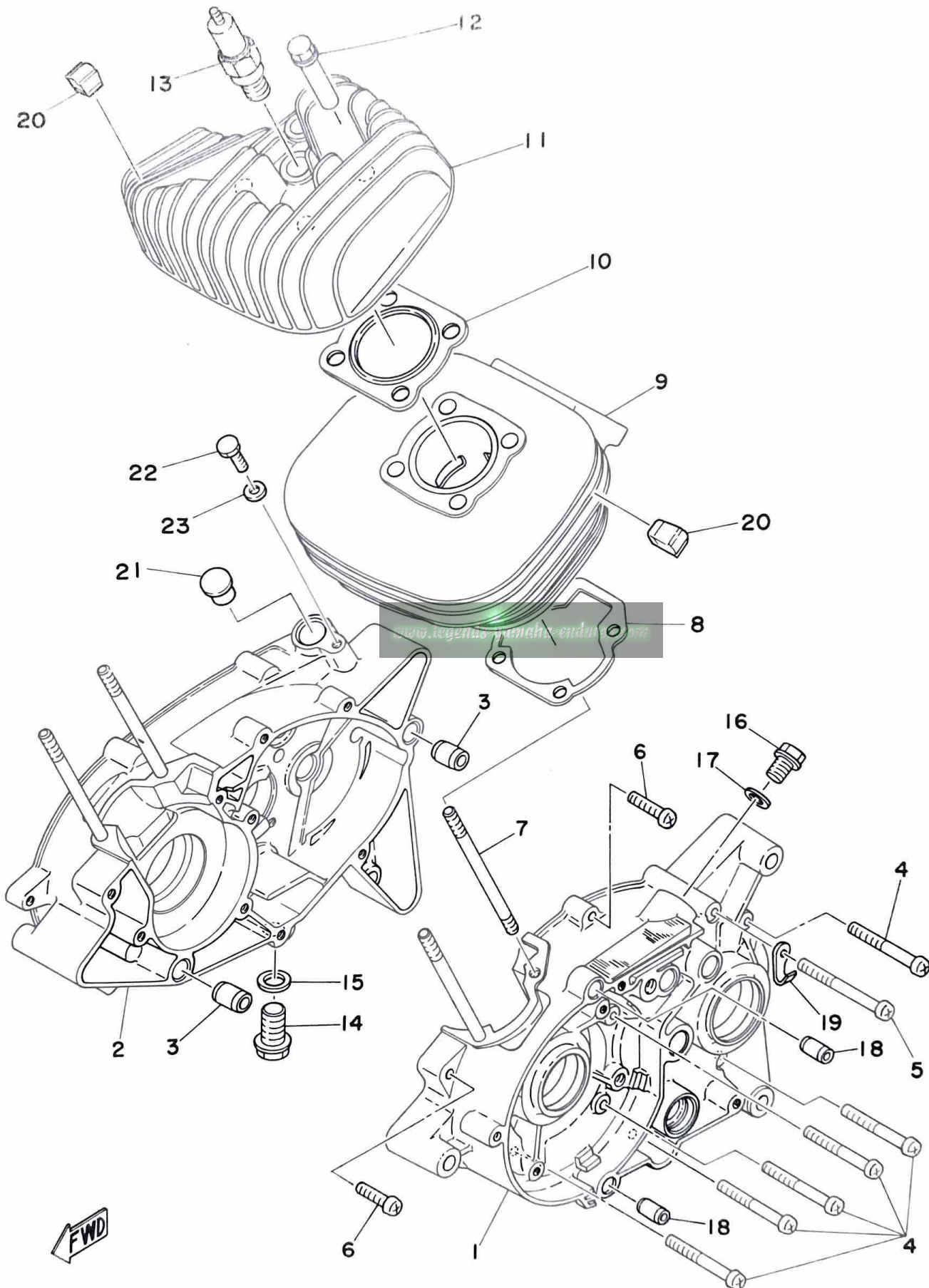
NUMERICAL INDEX

ENGINE

www.legends-yamaha-enduros.com

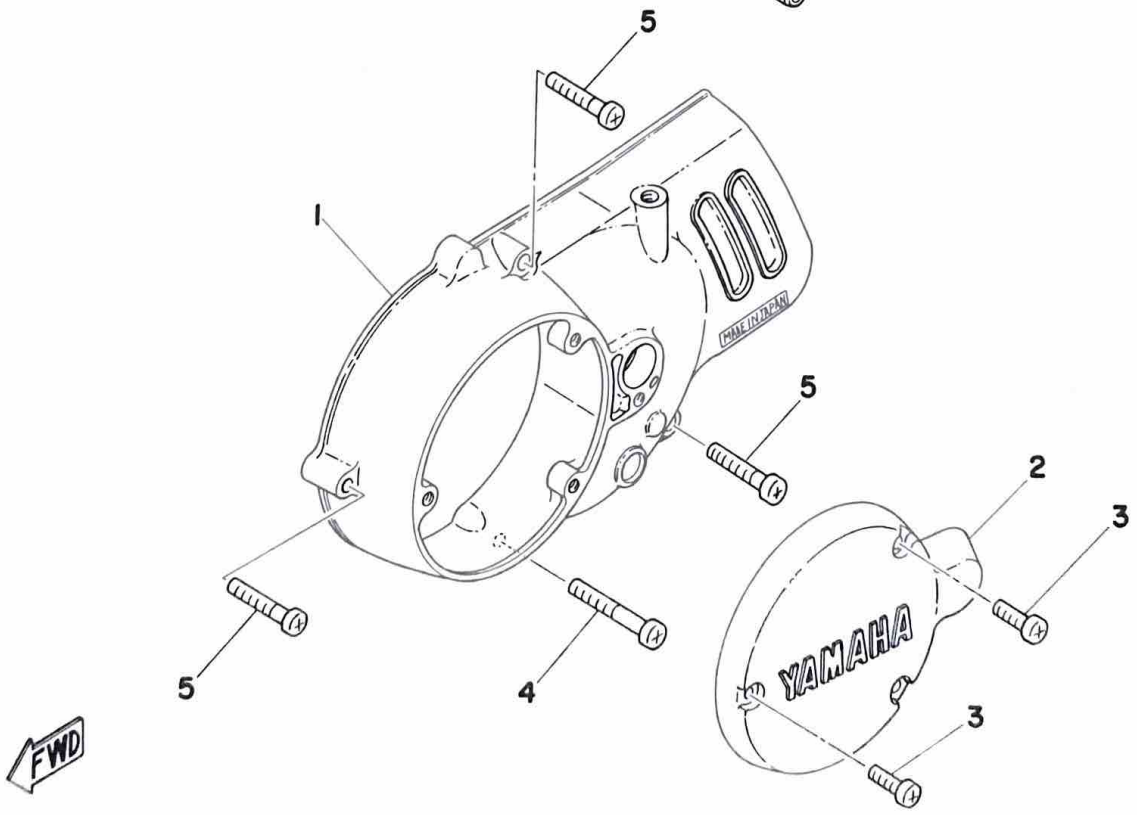
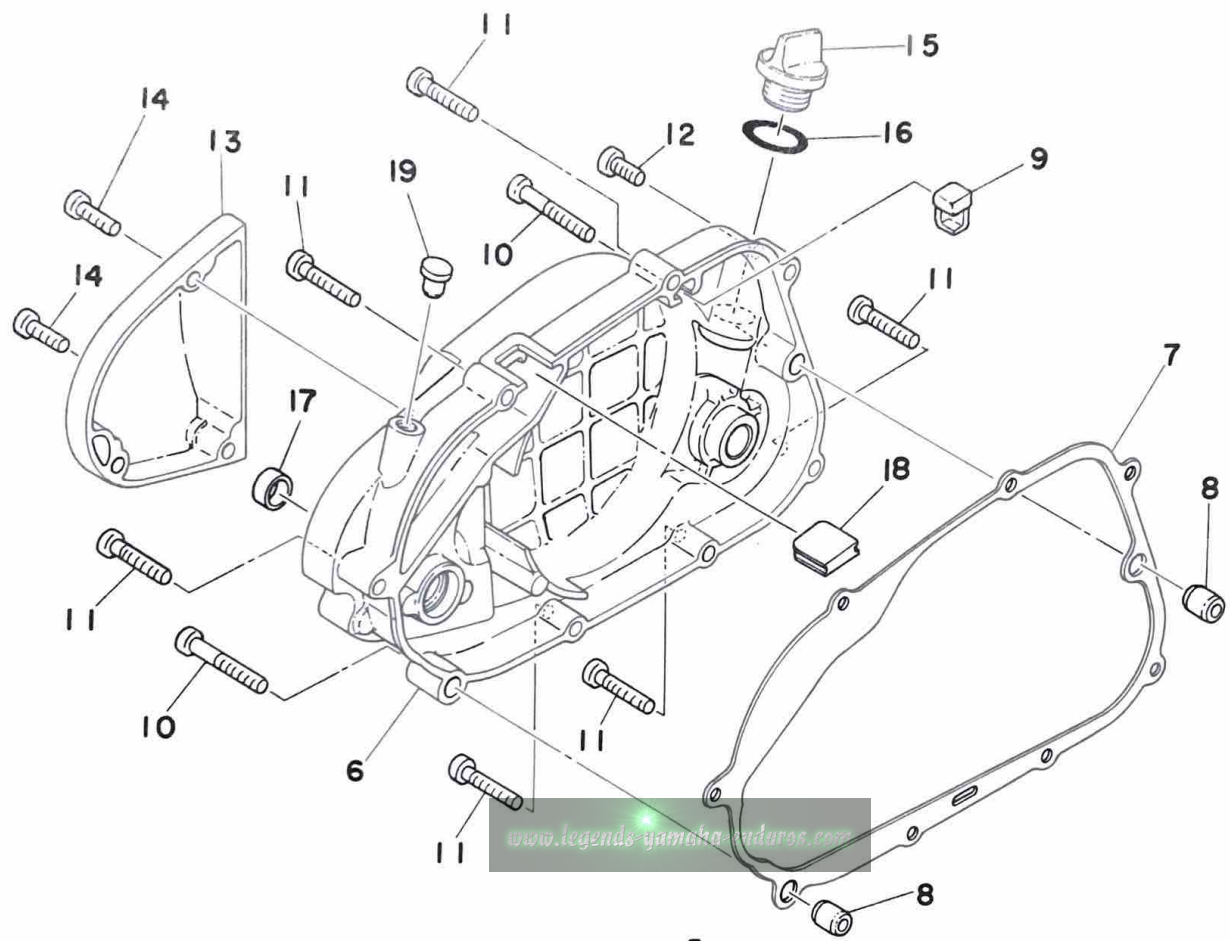
YAMAHA
PARTS

Fig. 1 CRANKCASE · CYLINDER



Ref. No.	Parts No.	Description	Q'ty	Applicable Machine No.	Remarks
1- 1	598-15111-00-98	CASE, crank left	1		Low Gloss Black
2	598-15121-01-98	CASE, crank right	1		Low Gloss Black
3	91830-22016	PIN, dowel (8.4-12-16)	2		
4	92501-06050	SCREW, panhead	8		
5	92501-06055	SCREW, panhead	1		
6	92501-06025	SCREW, panhead	2		
7	90116-07031	BOLT, stud (626-11361-00)	4		
8	598-11351-00	GASKET, cylinder	1		
9	1T0-11311-00	CYLINDER	1		
10	598-11181-00	GASKET, cylinder head	1		
11	1T0-11111-00	HEAD, cylinder	1		
12	90179-07203	NUT	4		
13	94701-00045	PLUG, spark (B-8ES)	1		
14	90340-12005	PLUG, straight (132-15351-00)	1		
15	90430-12038	GASKET (132-15353-00)	1		
16	90340-10003	PLUG, straight (367-18588-00)	1		
17	90430-10031	GASKET (367-18568-00)	1		
18	91830-21014	PIN, dowel (6.4-10-15)	2		
19	90465-06056	CLAMP (462-15485-00)	1		
20	434-11161-00	ABSORBER	24		
21	90338-16029	PLUG	1		
22	97301-06010	BOLT, hexagon	1		
23	92901-06200	WASHER, plain	1		

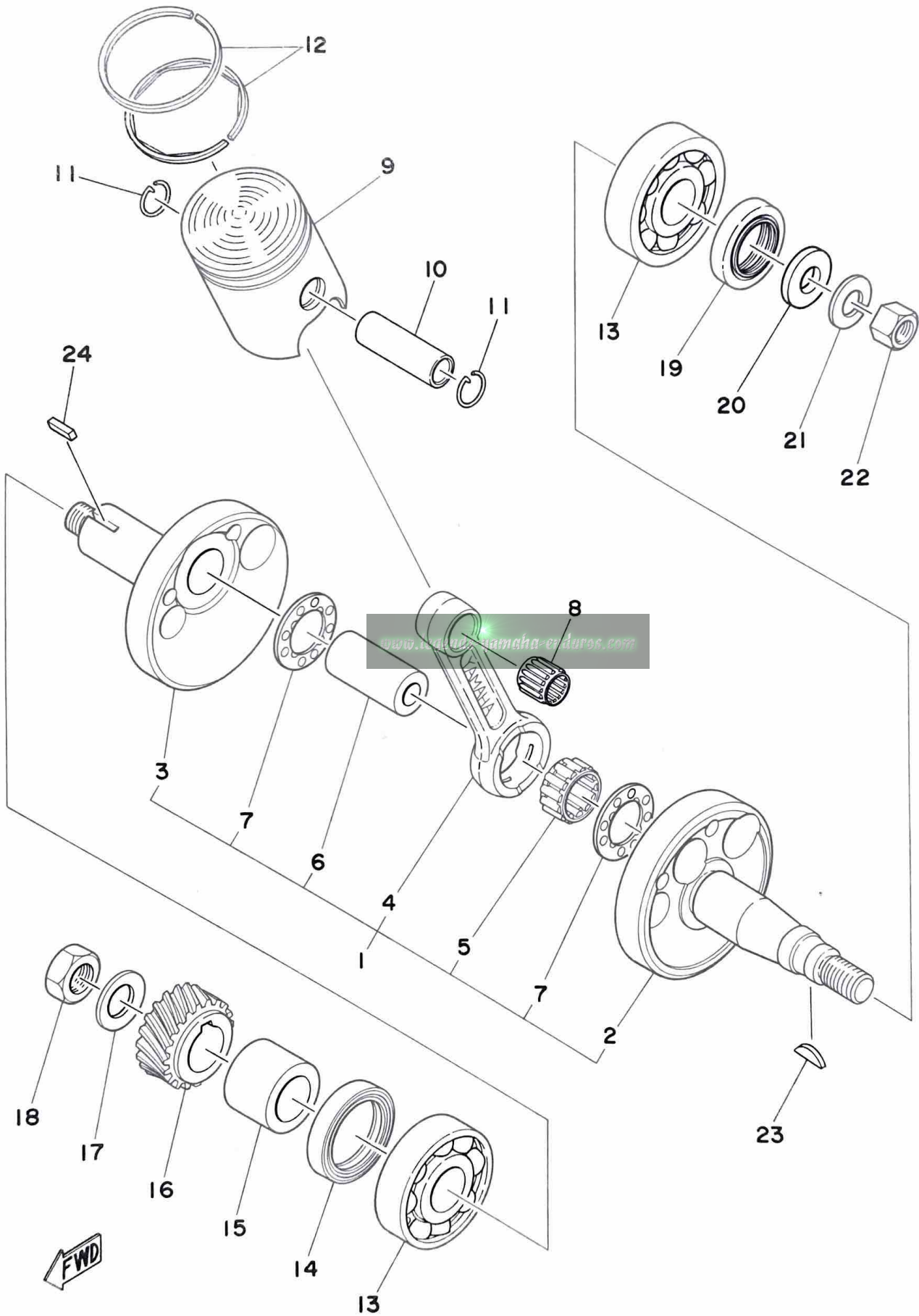
Fig. 2 CRANKCASE COVER



FWD

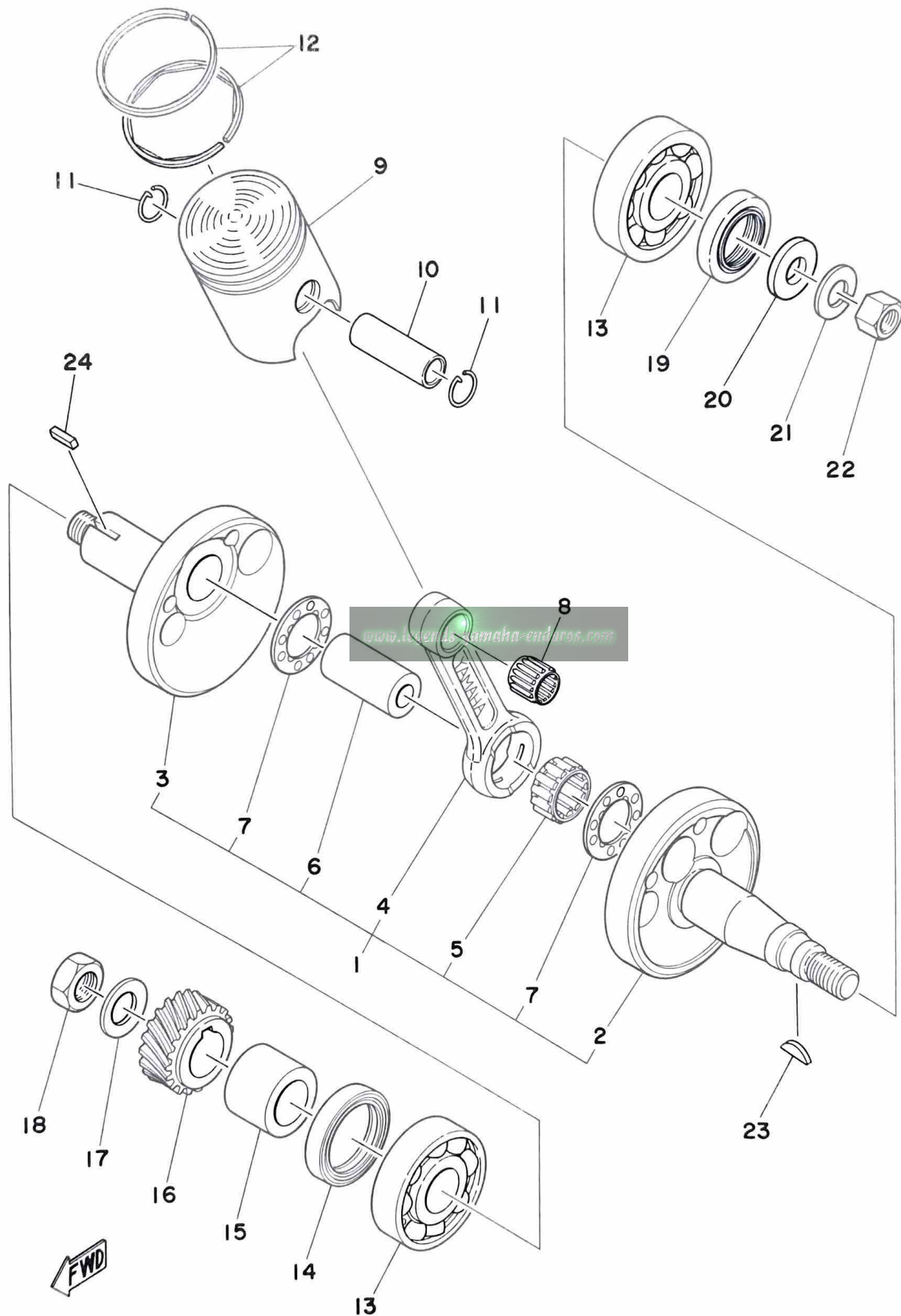
Ref. No.	Parts No.	Description	Q'ty	Applicable Machine No.	Remarks
2- 1	353-15411-00-98	COVER, crankcase left	1		Low Gloss Black
2	353-15415-00-98	COVER, generator	1		Low Gloss Black
3	92506-06020	SCREW, panhead	3		
4	92506-06045	SCREW, panhead	1		
5	92506-06030	SCREW, panhead	3		
6	462-15421-01-98	COVER, crankcase right	1		Low Gloss Black
7	353-15451-00	GASKET, crankcase cover	1		
8	91810-02014	PIN, dowel (6.4-10-15)	2		
9	353-15437-02	SCRAPER, oil	1		
10	92506-06040	SCREW, panhead	2		
11	92506-06030	SCREW, panhead	6		
12	92506-06015	SCREW, panhead	1		
13	462-15416-01-98	COVER, oil pump	1		Low Gloss Black
14	92506-06025	SCREW, panhead	3		
15	353-15362-00	PLUG, oil level	1		
16	93210-21190	O-RING (2.6-20.6)	1		
17	90338-16029	PLUG, blind	1		
18	90338-15045	PLUG, blind (345-15439-00)	1		
19	90338-07011	PLUG, blind (116-83931-00)	1		

Fig. 3 CRANK · PISTON



Ref. No.	Parts No.	Description	Q'ty	Applicable Machine No.	Remarks
3- 1	1T0-11400-00	CRANK ASS'Y	1		
2	598-11412-00	. CRANK, left	1		
3	598-11422-00	. CRANK, right	1		
4	598-11651-00	. ROD, connecting	1		
5	93310-418E3	. BEARING, con-rod big end	1		
6	257-11681-00	. PIN, crank	1		
7	90209-18112	. WASHER (132-11685-00)	2		
8	93310-11268	BEARING, con-rod small end	1		
9	1T0-11631-00-97	PISTON (48.97mm STD)	} U.R 1		
	1T0-11631-00-98	PISTON (48.98mm STD)			
	1T0-11635-00	PISTON (49.25mm 1st O.S)	1		Alternate Parts
	1T0-11636-00	PISTON (49.50mm 2nd O.S)	1		Alternate Parts
	1T0-11637-00	PISTON (49.75mm 3rd O.S)	1		Alternate Parts
	1T0-11638-00	PISTON (50.00mm 4th O.S)	1		Alternate Parts
10	122-11633-00	PIN, piston	1		
11	93450-13022	CIRCLIP (132-11634-00)	2		
12	598-11601-00	PISTON RING SET (STD)	1s		
	598-11601-10	PISTON RING SET (1st O.S)	1s		Alternate Parts
	598-11601-20	PISTON RING SET (2nd O.S)	1s		Alternate Parts
	598-11601-30	PISTON RING SET (3rd O.S)	1s		Alternate Parts
	598-11601-40	PISTON RING SET (4th O.S)	1s		Alternate Parts
13	93306-20418	BEARING (6204CS)	2		
14	93103-28100	OIL SEAL (SW-28-40-8)	1		
15	90387-20170	COLLAR (248-16136-00)	1		
16	353-16111-01	GEAR, primary drive (19T)	1		
17	90208-12015	WASHER (164-16119-00)	1		
18	90179-12044	NUT (353-16144-00)	1		
19	93102-20155	OIL SEAL (SD-20-35-7)	1		
20	90201-12535	WASHER, plate	1		
21	92901-12100	WASHER, spring	1		

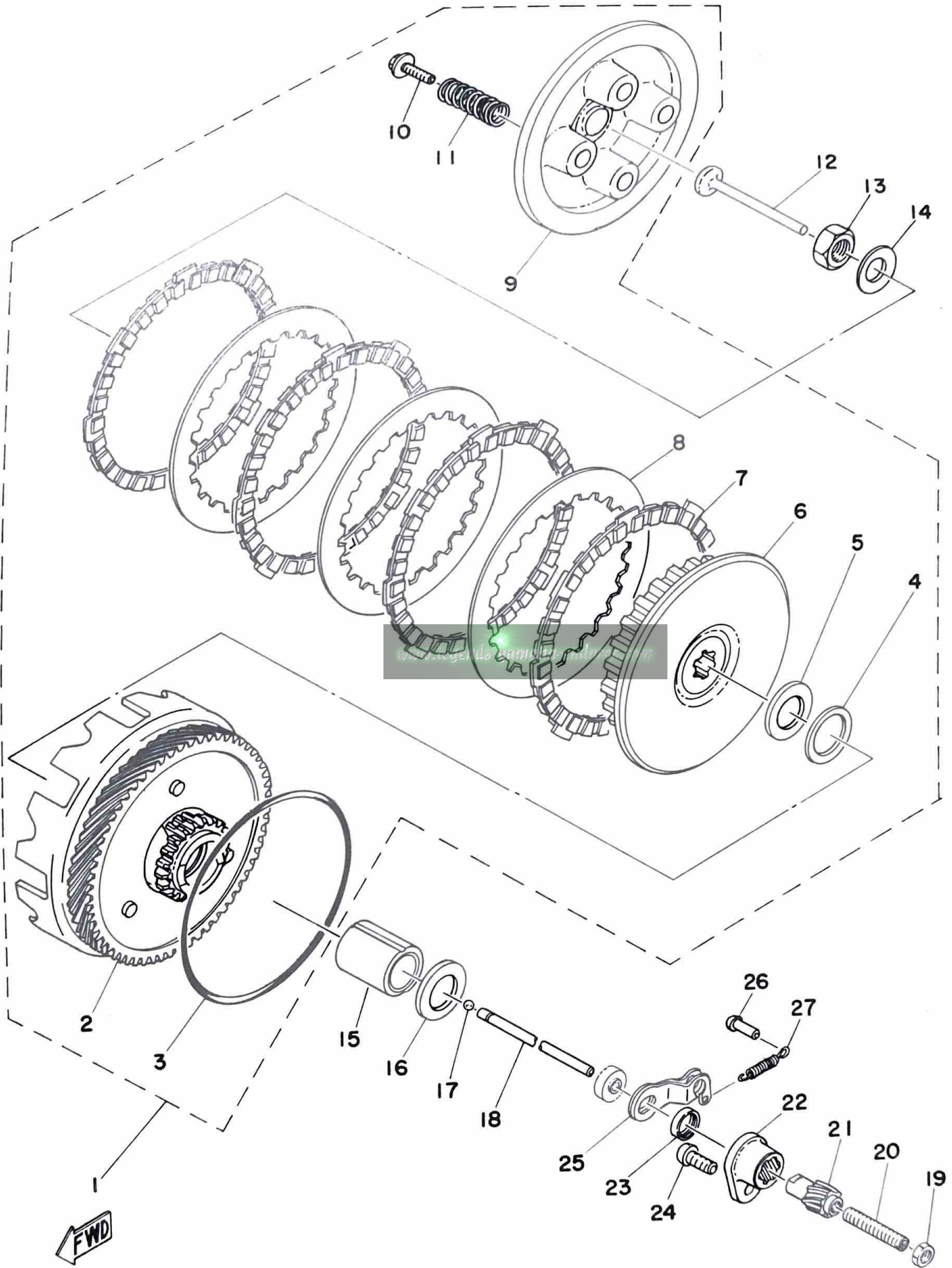
Fig. 3 CRANK · PISTON



Ref. No.	Parts No.	Description	Q'ty	Applicable Machine No.	Remarks
3-22	90170-12175	NUT, hexagon (98801-12200)	1		
23	90280-03017	KEY, woodruff (146-11545-00)	1		
24	90282-05005	KEY, straight (353-11546-00)	1		

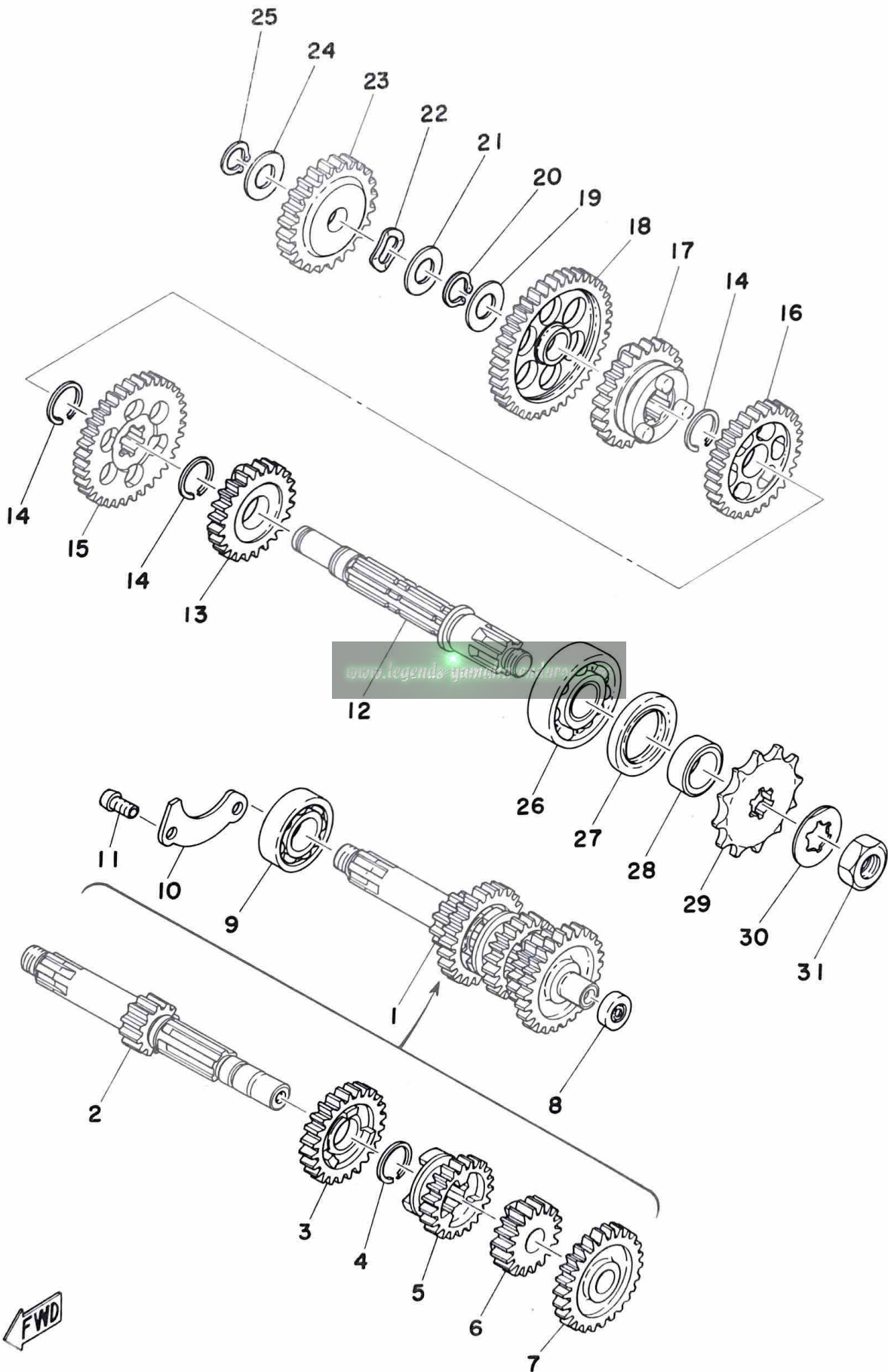
www.legends-yamaha-enduro.com

Fig. 4 CLUTCH



Ref. No.	Parts No.	Description	Q'ty	Applicable Machine No.	Remarks
4- 1	1T0-16301-00	CLUTCH ASS'Y	1		
2	1T0-16150-00	. PRIMARY DRIVEN GEAR COMP.	1		
3	93210-98202	. O-RING (5.33-97.76)	1		
4	90201-23315	. WASHER, plate (116-16153-00)	1		
5	122-16164-00	. PLATE, thrust (17.2-30-2)	1		
6	353-16371-00	. BOSS, clutch	1		
7	598-16321-01	. PLATE, friction	4		
8	598-16324-00	. PLATE, clutch	3		
9	598-16351-00	. PLATE, pressure	1		
10	90119-05001	. BOLT, hexagon with washer	4		
11	90501-20122	. SPRING (137-16333-00)	4		
12	137-16356-00	ROD, push 1	1		
13	90170-12060	NUT, hexagon (137-16377-00)	1		
14	90208-12015	WASHER (164-16119-00)	1		
15	90560-17123	SPACER (131-16181-01)	1		
16	122-16164-00	PLATE, thrust (17.2-30-2)	1		
17	93503-16010	BALL (3/16 inch)	1		
18	353-16357-00	ROD, push 2	1		
19	95301-06700	NUT, hexagon	1		
20	90113-06013	BOLT, set (241-16343-00)	1		
21	241-16341-01	SCREW, push	1		
22	353-16396-00	HOUSING, push screw	1		
23	93104-11028	OIL SEAL (SO-10.5-15-3)	1		
24	92501-06015	SCREW, panhead	1		
25	451-16342-00	LEVER, push	1		
26	132-16346-00	HOOK, spring	1		
27	90506-07066	SPRING, tension (257-16345-00)	1		

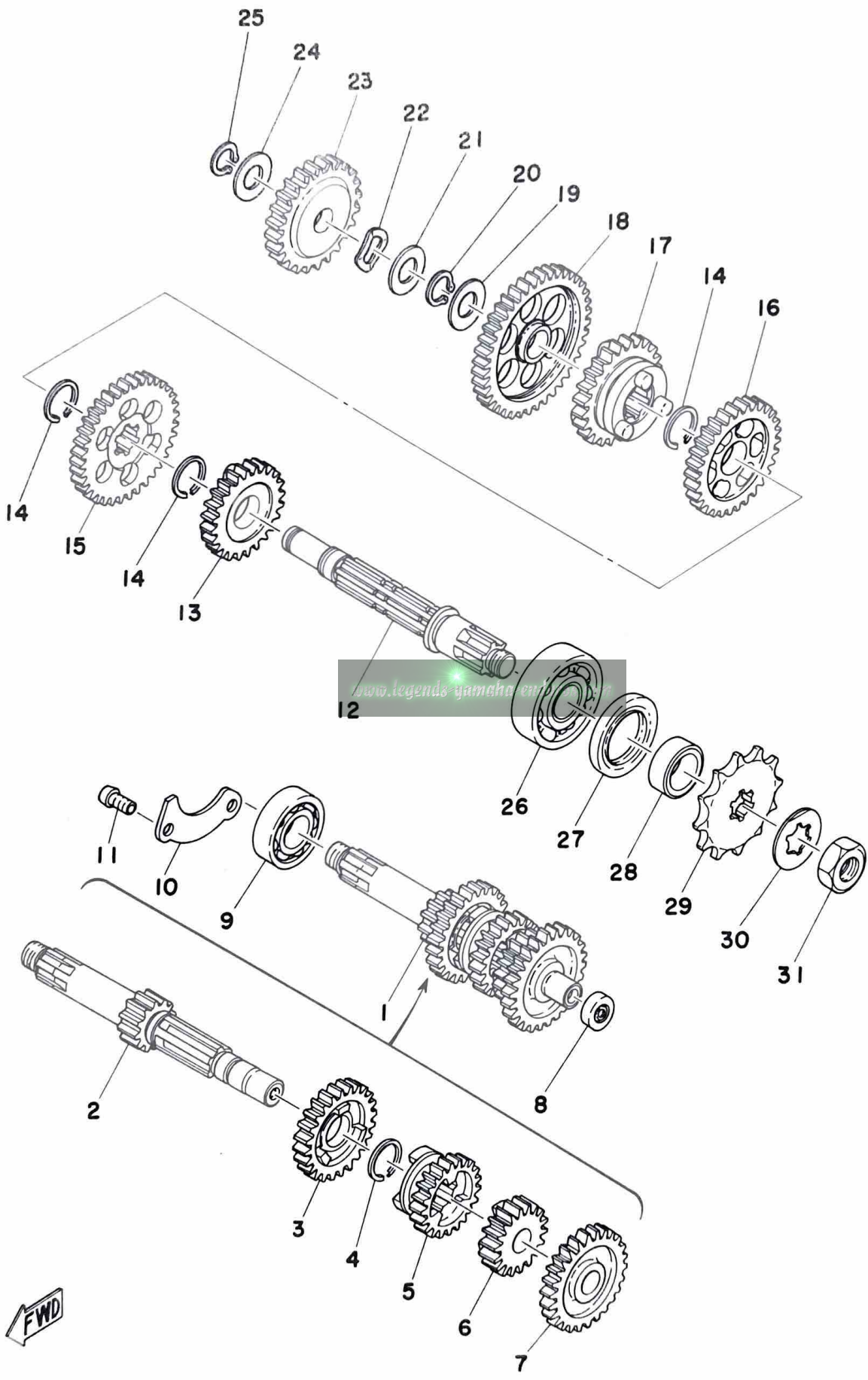
Fig. 5 TRANSMISSION



Ref. No.	Parts No.	Description	Q'ty	Applicable Machine No.	Remarks
5- 1	353-17410-01	MAIN AXLE COMP.	1		
2	353-17411-01	. AXLE, main (12T)	1		
3	353-17141-01	. GEAR, 4th pinion (24T)	1		
4	93440-16030	. CIRCLIP (257-17414-00)	1		
5	353-17131-00	. GEAR, 3rd pinion (21T)	1		
6	353-17121-00	. GEAR, 2nd pinion (17T)	1		
7	353-17151-00	. GEAR, 5th pinion (26T)	1		
8	257-15389-00	SEAL, push rod	1		
9	93306-20303	BEARING (6203Z)	1		
10	353-17471-00	PLATE, bearing cover	1		
11	92501-06012	SCREW, panhead	2		
12	598-17421-00	AXLE, drive	1		
13	353-17251-00	GEAR, 5th wheel (25T)	1		
14	93440-16030	CIRCLIP (257-17414-00)	3		
15	353-17221-00	GEAR, 2nd wheel (34T)	1		
16	353-17231-00	GEAR, 3rd wheel (30T)	1		
17	353-17241-00	GEAR, 4th wheel (27T)	1		
18	353-17211-00	GEAR, 1st wheel (39T)	1		
19	257-17219-00	SHIM (13.2-24-0.6)	}	U.R	
	462-17219-00	SHIM (13.2-24-0.8)			
20	93410-13004	CIRCLIP (S-13)	1		
21	90201-13202	WASHER, plate (201-15653-00)	1		
22	90206-15021	WASHER, wave (137-15643-00)	1		
23	353-15651-00	GEAR, kick idle (25T)	1		
24	102-18137-00-10	WASHER	1		
25	93410-12003	CIRCLIP (S-12)	1		
26	93306-30301	BEARING (6303)	1		
27	93102-25017	OIL SEAL (SD-25-40-5)	1		
28	90387-17137	COLLAR (257-17462-00)	1		
29	257-17461-21	SPROCKET, drive (12T)	}	U.R	1
	257-17461-31	SPROCKET, drive (13T)			
	257-17461-41	SPROCKET, drive (14T)			

STD

Fig. 5 TRANSMISSION

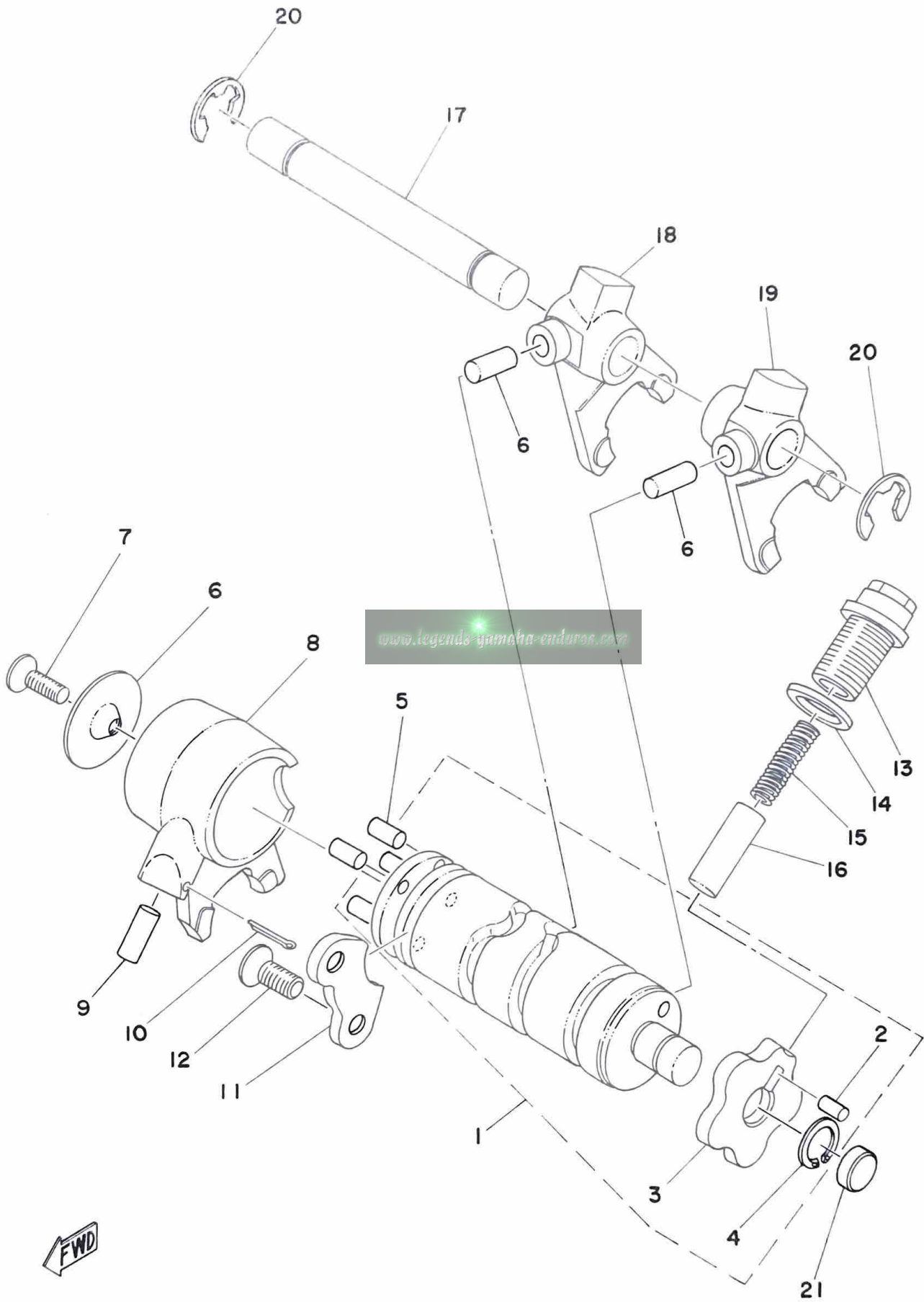


FWD

Ref. No.	Parts No.	Description	Q'ty	Applicable Machine No.	Remarks
5-30	90215-13019	WASHER, lock (257-17464-00)	1		
31	90179-12181	NUT, lock	1		

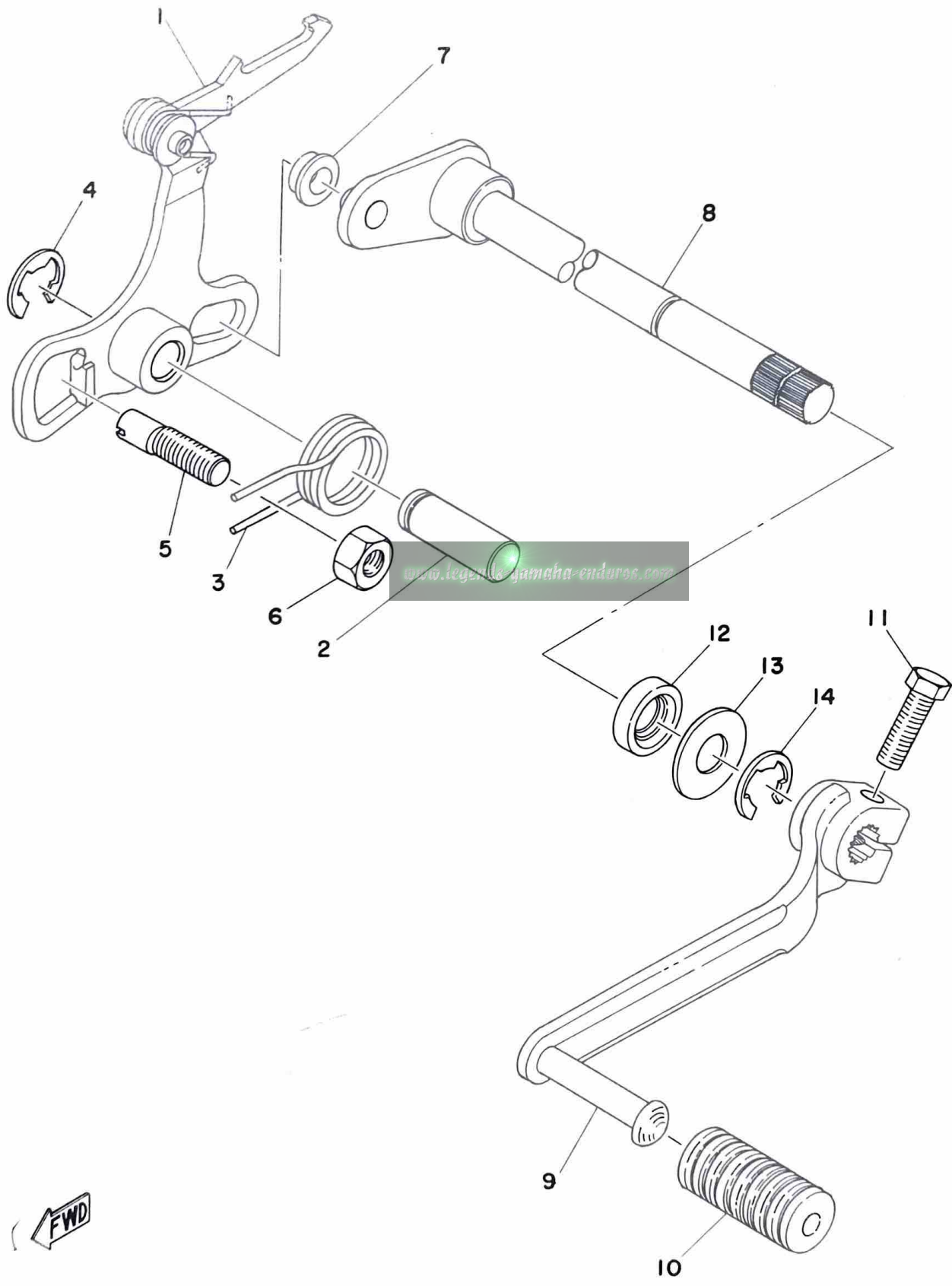
www.legends-yamaha-enduros.com

Fig. 6 SHIFTER 1



Ref. No.	Parts No.	Description	Q'ty	Applicable Machine No.	Remarks
6- 1	353-18540-01	SHIFT CAM ASS'Y	1		
2	93604-08071	. PIN, dowel (4-8)	1		
3	353-18141-01	. PLATE, stopper 1	1		
4	93440-12026	. CIRCLIP (12 special)	1		
5	93604-10011	PIN, dowel (4-10)	4		
6	214-18561-00	PLATE, side	1		
7	98701-05012	SCREW, flathead	1		
8	353-18511-01	FORK, shift 1	1		
9	93606-14081	PIN, dowel (6-14.5)	3		
10	91401-25017	PIN, cotter	1		
11	353-18562-00	PLATE, stopper 2	1		
12	92701-06012	SCREW, flathead	2		
13	90109-14390	BOLT	1		
14	137-15353-00	GASKET, drain plug (14-21-1.5)	1		
15	90501-09292	SPRING, compression	1		
16	278-18547-02	STOPPER, cam	1		
17	214-18531-00	BAR, shift fork guide	1		
18	353-18512-01	FORK, shift 2	1		
19	353-18513-01	FORK, shift 3	1		
20	93430-10016	CIRCLIP (E-10)	2		
21	90334-12009	PLUG, straight (296-15385-00)	1		

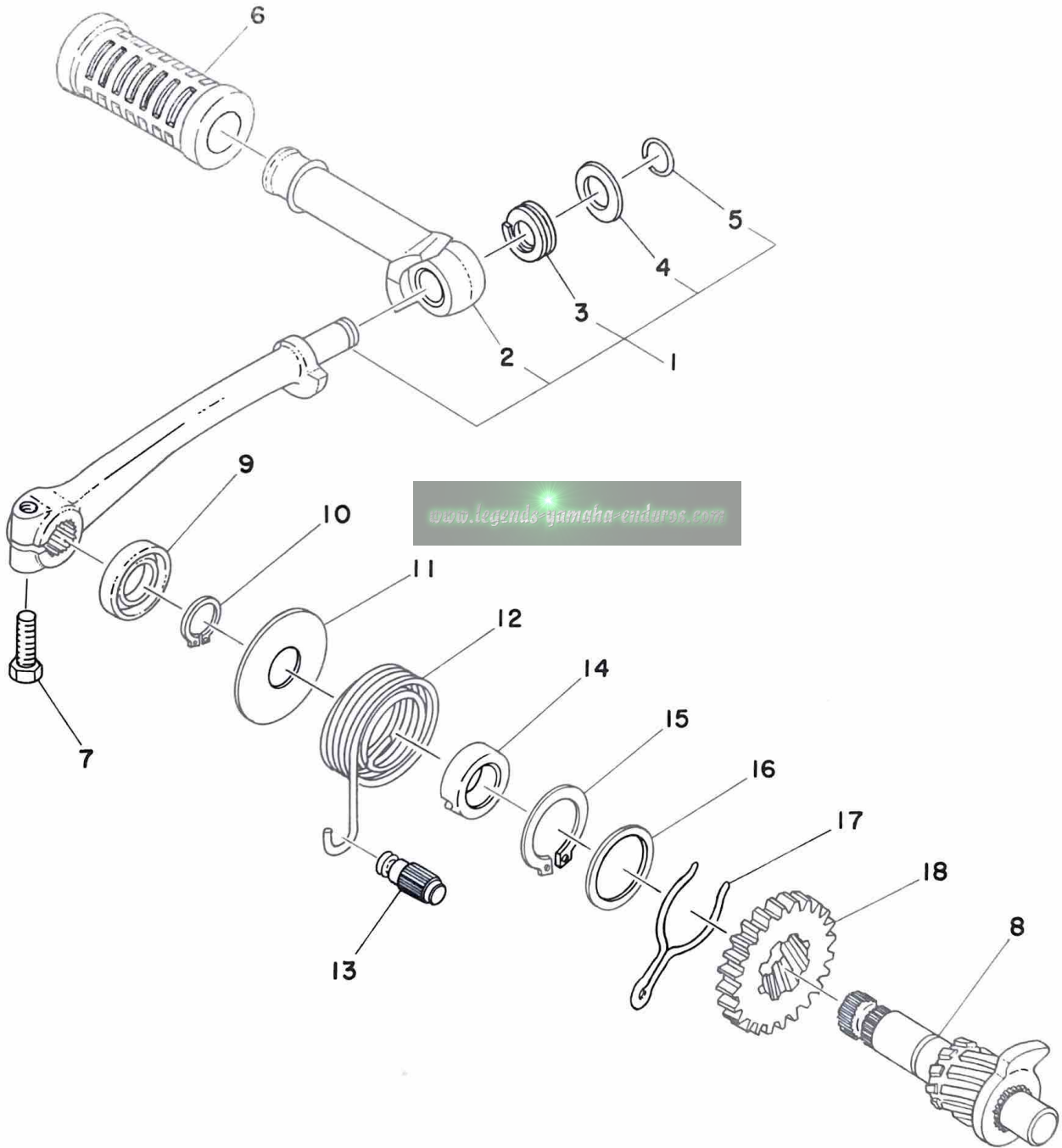
Fig.7 SHIFTER 2



Ref. No.	Parts No.	Description	Q'ty	Applicable Machine No.	Remarks
7- 1	353-18120-00	CHANGE LEVER ASS'Y	1		
2	367-18197-00	SHAFT	1		
3	90508-32054	SPRING (353-18124-00)	1		
4	93430-10016	CIRCLIP (E-10)	1		
5	90149-08094	SCREW, adjusting	1		
6	95301-08600	NUT, hexagon	1		
7	214-18178-00	ROLLER, change lever 1	1		
8	353-18101-00	CHANGE SHAFT ASS'Y	1		
9	353-18111-00-93	PEDAL, change	1		
10	132-18113-01	COVER, change pedal	1		
11	97321-06020	BOLT, hexagon	1		
12	93101-12004	OIL SEAL (S-12-22-5)	1		
13	90201-12575	WASHER, plate	1		
14	93430-10016	CIRCLIP (E-10)	1		

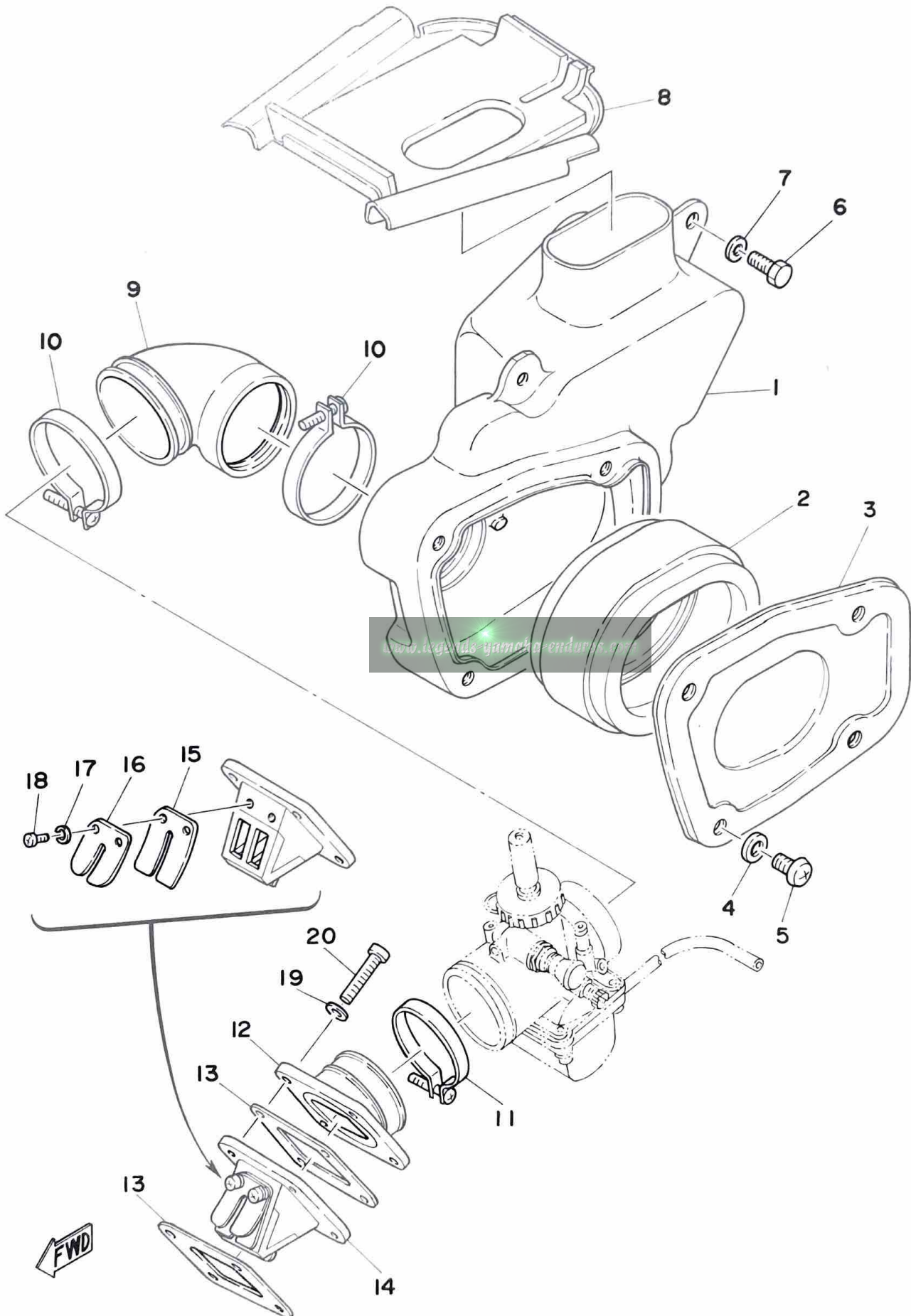
www.legends-yamaha-enduros.com

Fig. 8 KICK STARTER



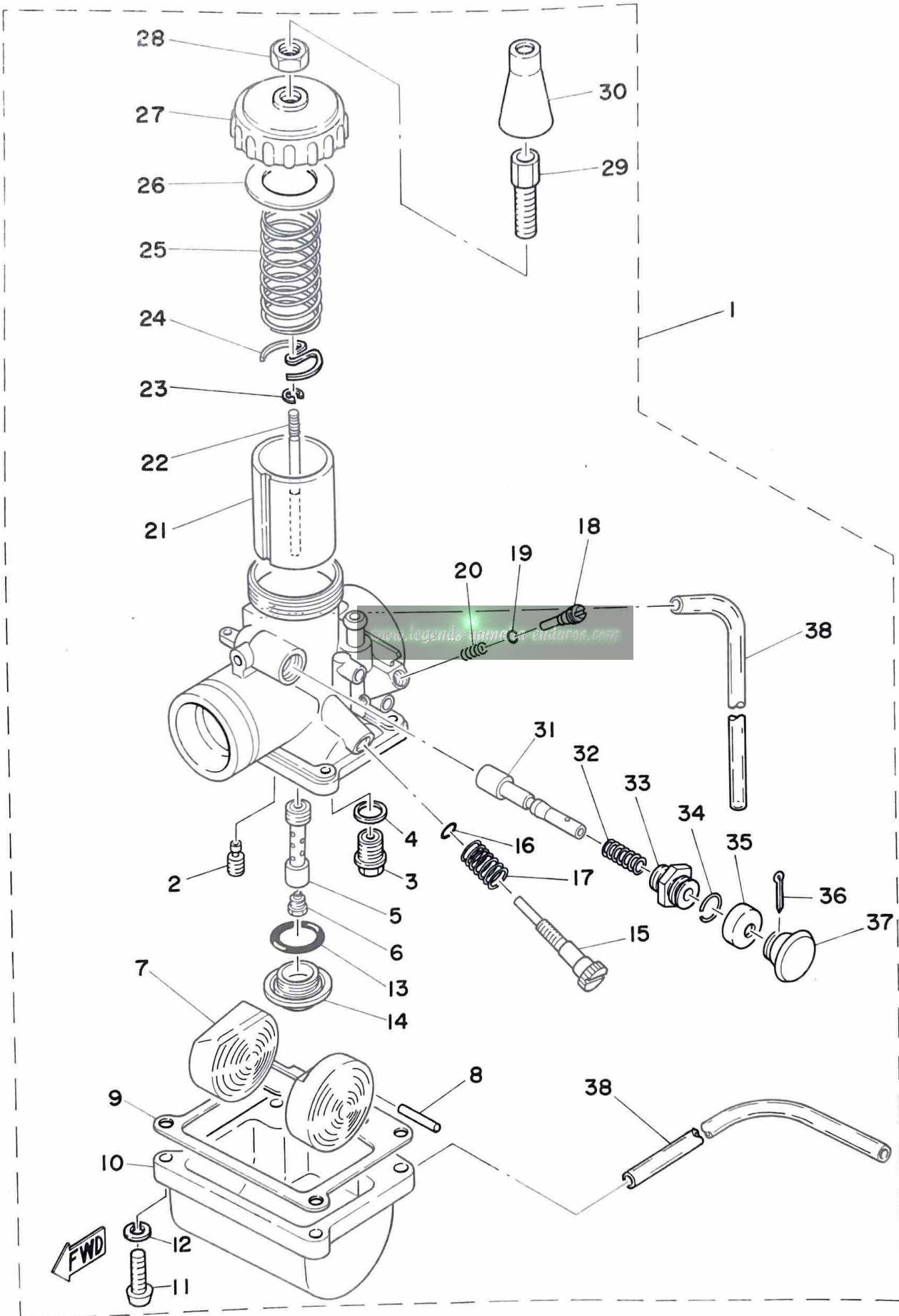
Ref. No.	Parts No.	Description	Q'ty	Applicable Machine No.	Remarks
8- 1	462-15610-00-93	KICK CRANK ASS'Y	1		
2	122-15612-02	. LEVER, kick	1		
3	90504-18005	. SPRING (132-15625-01)	1		
4	90209-10108	. WASHER (132-15616-01)	1		
5	93440-10028	. CIRCLIP (132-15617-00)	1		
6	156-15618-01	COVER, kick lever	1		
7	97311-06025	BOLT, hexagon	1		
8	462-15660-00	KICK AXLE ASS'Y	1		
9	93109-15001	OIL SEAL (SDO-15-26-6)	1		
10	93410-15005	CIRCLIP (S-15)	1		
11	462-15676-00	COVER, kick spring	1		
12	90508-26196	SPRING (451-15665-00)	1		
13	248-15668-00	STOPPER, kick spring	1		
14	462-15666-00	SPACER	1		
15	93410-25017	CIRCLIP (S-25)	1		
16	117-15644-00	SHIM (25.1-32-1)	1		
17	90468-26038	CLIP (353-15687-00)	1		
18	353-15641-00	GEAR, kick (26T)	1		

Fig. 9 INTAKE



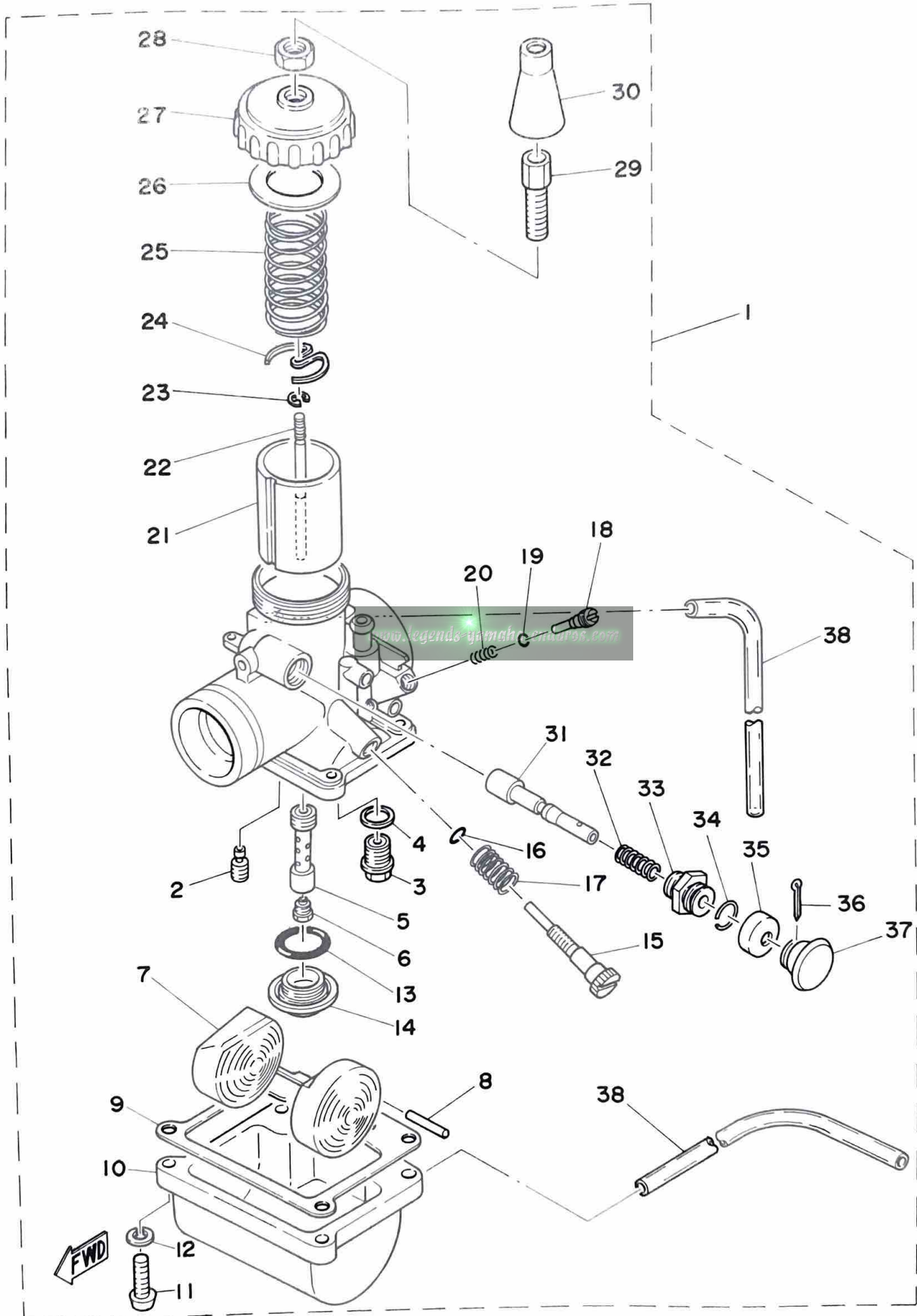
Ref. No.	Parts No.	Description	Q'ty	Applicable Machine No.	Remarks
9- 1	1T0-14411-00	CASE, air cleaner	1		
2	1T0-14451-00	ELEMENT, air cleaner	1		
3	1T0-14412-00	CAP, cleaner case	1		
4	92901-06600	WASHER, plate	4		
5	92501-06012	SCREW, panhead	4		
6	97301-06015	BOLT, hexagon	3		
7	90201-06067	WASHER, plate	3		
8	1T0-14418-00	COVER, cleaner duct	1		
9	598-14453-00	JOINT, air cleaner	1		
10	90460-51059	CLAMP, hose (304-14455-00)	2		
11	90460-43053	CLAMP, hose	1		
12	1T0-13565-00	JOINT	1		
13	314-13621-02	GASKET, valve seat	2		
14	558-13610-00	REED VALVE ASS'Y	1		
15	345-13613-70	. VALVE, reed	2		
16	558-13616-00	. STOPPER, reed valve	2		
17	92901-03100	. WASHER, spring	4		
18	98512-03008	. SCREW, panhead	4		
19	92901-06600	WASHER, plate	4		
20	92501-06025	SCREW, panhead	4		

Fig. 10 CARBURETOR



Ref. No.	Parts No.	Description	Q'ty	Applicable Machine No.	Remarks
10- 1	598-14101-60	CARBURETOR ASS'Y	1		
2	260-14142-35	. JET, pilot (#35)	1		
3	168-14190-25	. VALVE SEAT ASS'Y (#2.5)	1		
4	214-14195-00	. WASHER, valve seat	1		
5	558-14141-30	. NOZZLE, main	1		
6	137-14143-34	. JET, main (#170)	} U.R 1		STD
	137-14143-36	. JET, main (#180)			
	137-14143-38	. JET, main (#190)			
7	314-14185-00	. FLOAT	1		
8	127-14186-00	. PIN, float	1		
9	304-14184-00	. GASKET, float chamber	1		
10	539-14181-00	. BODY, float chamber	1		
11	98501-04016	. SCREW, panhead	4		
12	92901-04100	. WASHER, spring	4		
13	558-14147-00	. O-RING	1		
14	500-14115-00	. PLUG, screw	1		
15	493-14122-00	. SCREW, throttle stop	1		
16	214-14147-00	. O-RING	1		
17	493-14133-00	. SPRING, throttle stop	1		
18	525-14123-00	. SCREW, air adjusting	1		
19	354-14147-00	. O-RING	1		
20	174-14134-00	. SPRING, air adjusting	1		
21	314-14112-15	. VALVE, throttle (#1.5)	1		
22	166-14116-13	. NEEDLE (4J13-2)	1		
23	164-14137-00	. CLIP	1		
24	246-14132-00	. SEAT, spring	1		
25	248-14131-00	. SPRING, throttle valve	1		
26	246-14126-00	. PACKING	1		
27	802-14158-00	. TOP, mixing chamber	1		
28	802-14161-00	. NUT, wire adjusting	1		
29	360-14124-20	. SCREW, wire adjusting	1		
30	802-14169-00	. CAP	1		

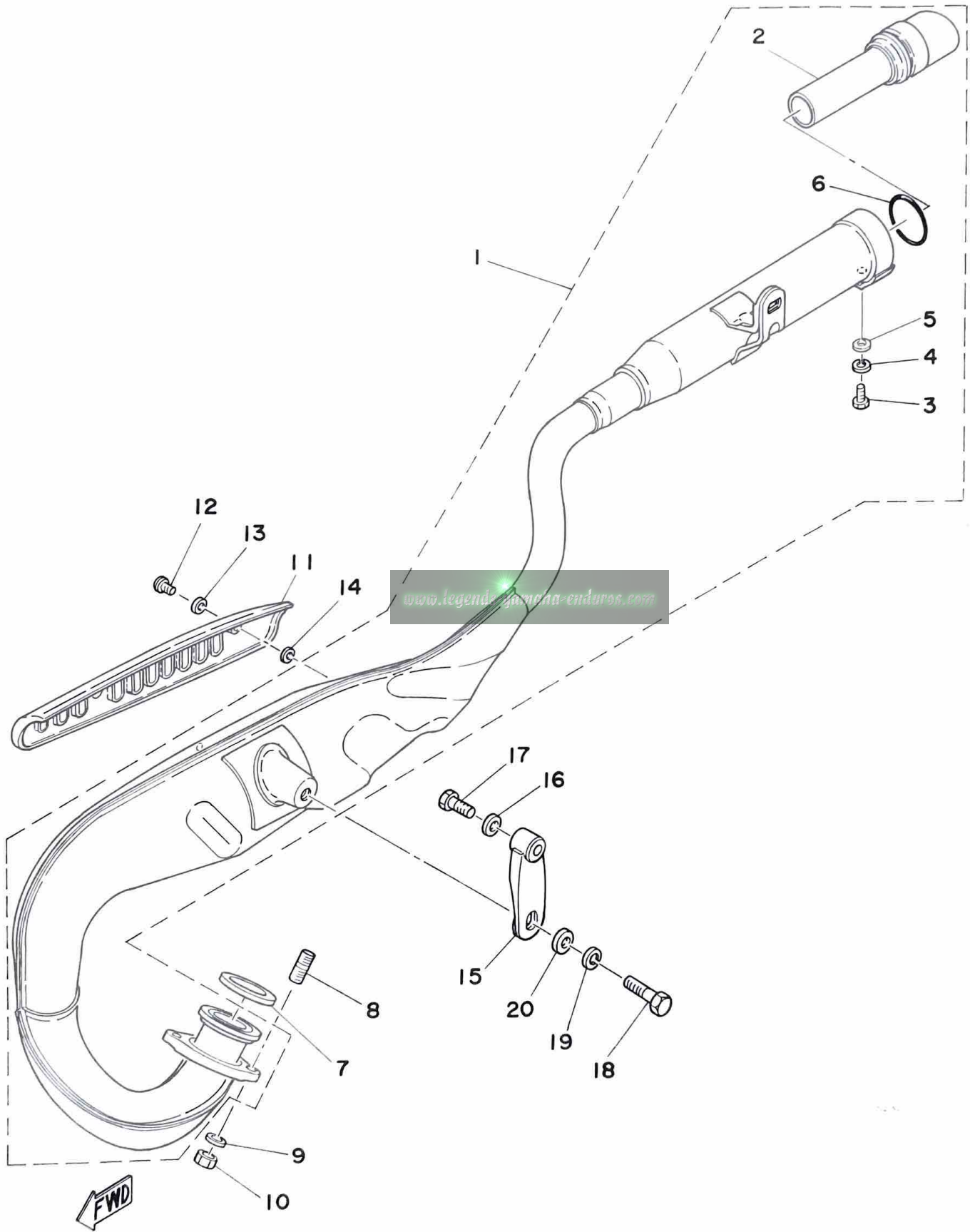
Fig. 10 CARBURETOR



Ref. No.	Parts No.	Description	Q'ty	Applicable Machine No.	Remarks
10-31	304-14171-00	. PLUNGER, starter	1		
32	156-14135-00	. SPRING, plunger	1		
33	152-14174-00	. CAP, plunger	1		
34	353-14138-00	. CLIP, plunger	1		
35	132-14173-00	. COVER, plunger cap	1		
36	304-14261-00	. HOLDER	1		
37	91401-16015	. PIN, cotter	1		
38	183-14196-00	. PIPE, over flow (3-160)	2		

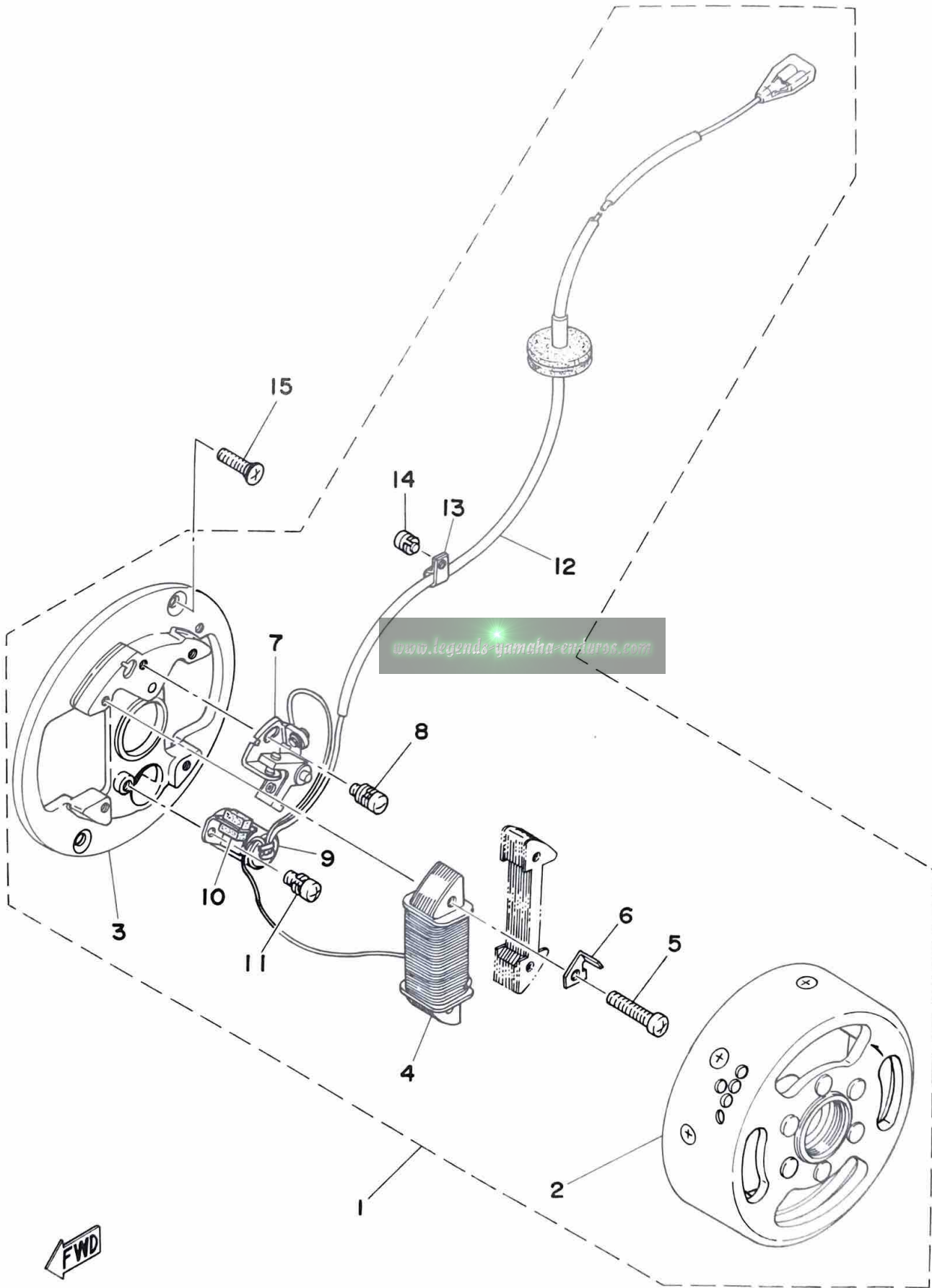
www.legends-yamaha-enduro.com

Fig. 11 EXHAUST



Ref. No.	Parts No.	Description	Q'ty	Applicable Machine No.	Remarks
11- 1	1T0-14610-00	EXHAUST PIPE ASS'Y	1		
2	1T0-14752-00	. PIPE, outlet	1		
3	92501-06012	. SCREW, panhead	1		
4	92901-06100	. WASHER, spring	1		
5	92901-06600	. WASHER, plate	1		
6	93210-42263	. O-RING	1		
7	132-14613-00	GASKET, exhaust pipe	1		
8	90116-08166	STUD	2		
9	92901-08100	WASHER, spring	2		
10	95303-08600	NUT, hexagon	2		
11	598-14718-00	PROTECTOR, muffler	1		
12	91903-06010	SCREW, bind	2		
13	90202-06010	WASHER, plate (178-14766-00)	2		
14	90202-05005	WASHER, plate (214-14766-00)	2		
15	598-14771-00	STAY, muffler	1		
16	92901-08100	WASHER, spring	1		
17	97301-08035	BOLT, hexagon	1		
18	97301-08020	BOLT, hexagon	1		
19	92901-08100	WASHER, spring	1		
20	92901-08600	WASHER, plate	1		

Fig. 12 FLYWHEEL MAGNETO



Ref. No.	Parts No.	Description	Q'ty	Applicable Machine No.	Remarks
12- 1	367-81300-21	FLYWHEEL MAGNETO ASS'Y	1		
2	367-81350-20	. ROTOR ASS'Y	1		
3	296-81309-20	. BASE, magneto	1		
4	207-81312-21	. COIL, soure	1		
5	110-81348-21	. SCREW	2		
6	296-81332-20	. PLATE, timing	1		
7	296-81321-21	. CONTACT BREAKER ASS'Y	1		
8	110-81347-21	. SCREW, panhead	1		
9	296-81325-20	. CONDENSER	1		
10	116-81331-20	. LUBRICATOR	1		
11	110-81346-21	. SCREW, panhead	1		
12	367-81315-20	. LEAD WIRE ASS'Y	1		
13	367-81328-20	. CLAMP, lead	1		
14	164-81246-21	. SCREW	1		
15	98701-05015	SCREW, flathead	2		

www.legends-yamaha-enduro.com

CHASSIS

www.legends-yamaha-enduros.com

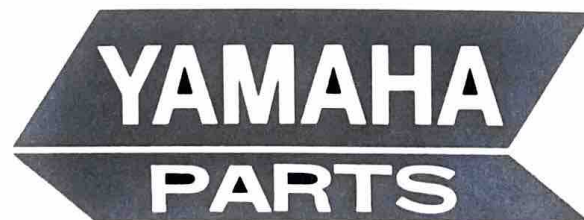
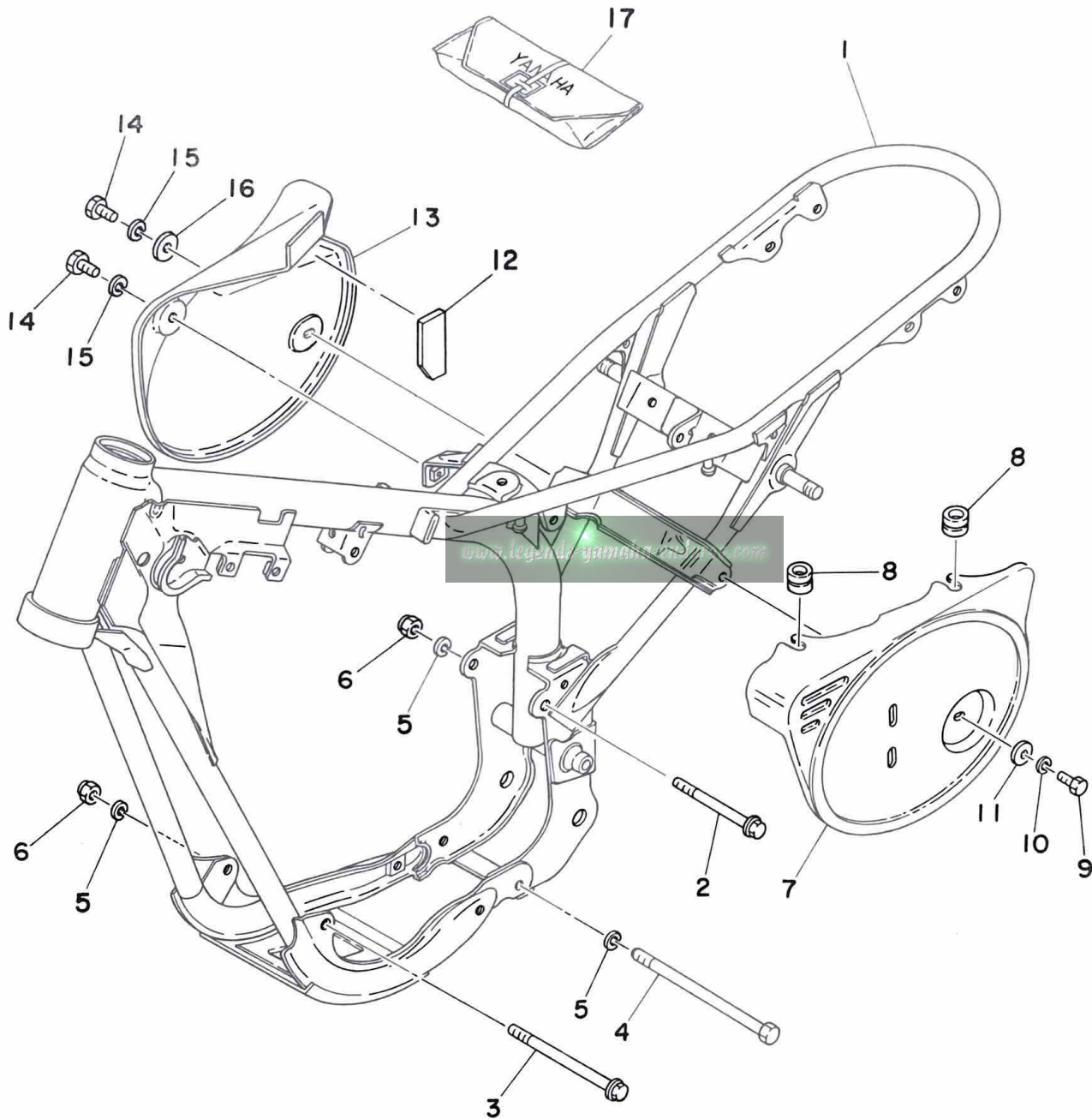
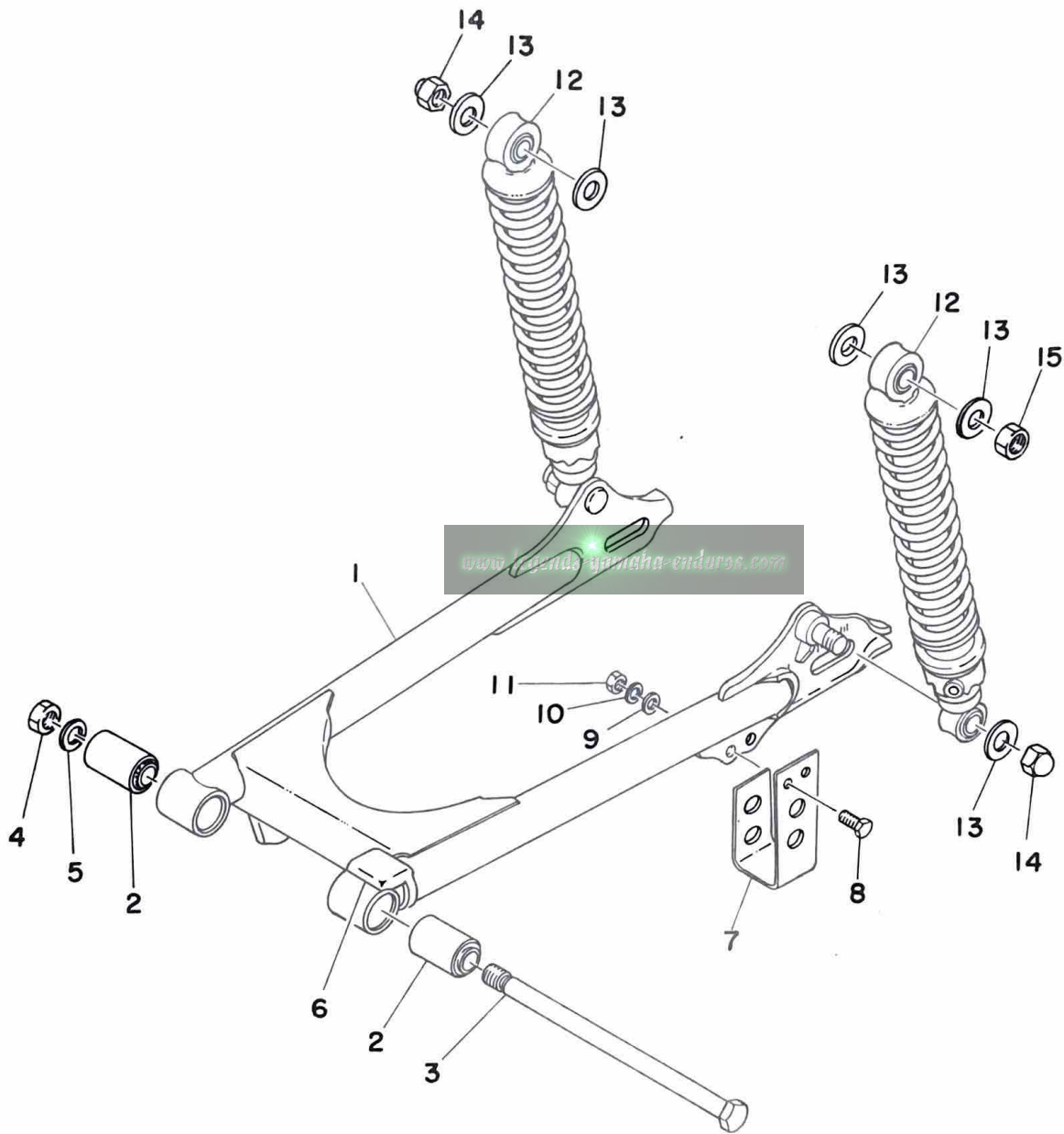


Fig. 13 FRAME · SIDE COVER



Ref. No.	Parts No.	Description	Q'ty	Applicable Machine No.	Remarks
13- 1	IT0-21110-00-33	FRAME COMP.	1		Yamaha Black
2	95821-08090	BOLT, flange	1		
3	95821-08120	BOLT, flange	1		
4	90109-08387	BOLT	1		
5	92901-08100	WASHER, spring	3		
6	90185-08054	NUT, self locking	2		
7	598-21711-00	COVER, side left	1		Competition Yellow/ Low Gloss Black
8	90480-12053	GROMMET	2		
9	97301-06015	BOLT, hexagon	1		
10	92901-06100	WASHER, spring	1		
11	90201-06067	WASHER, plate (6.5-20-1.6)	1		
12	598-21732-00	SEAL, side cover	1		
13	598-21721-00	COVER, side right	1		Competition Yellow/ Low Gloss Black
14	97301-06015	BOLT, hexagon	2		
15	92901-06100	WASHER, spring	2		
16	90201-06067	WASHER, plate (6.5-20-1.6)	1		
17	462-28100-11	TOOL ASS'Y	1		

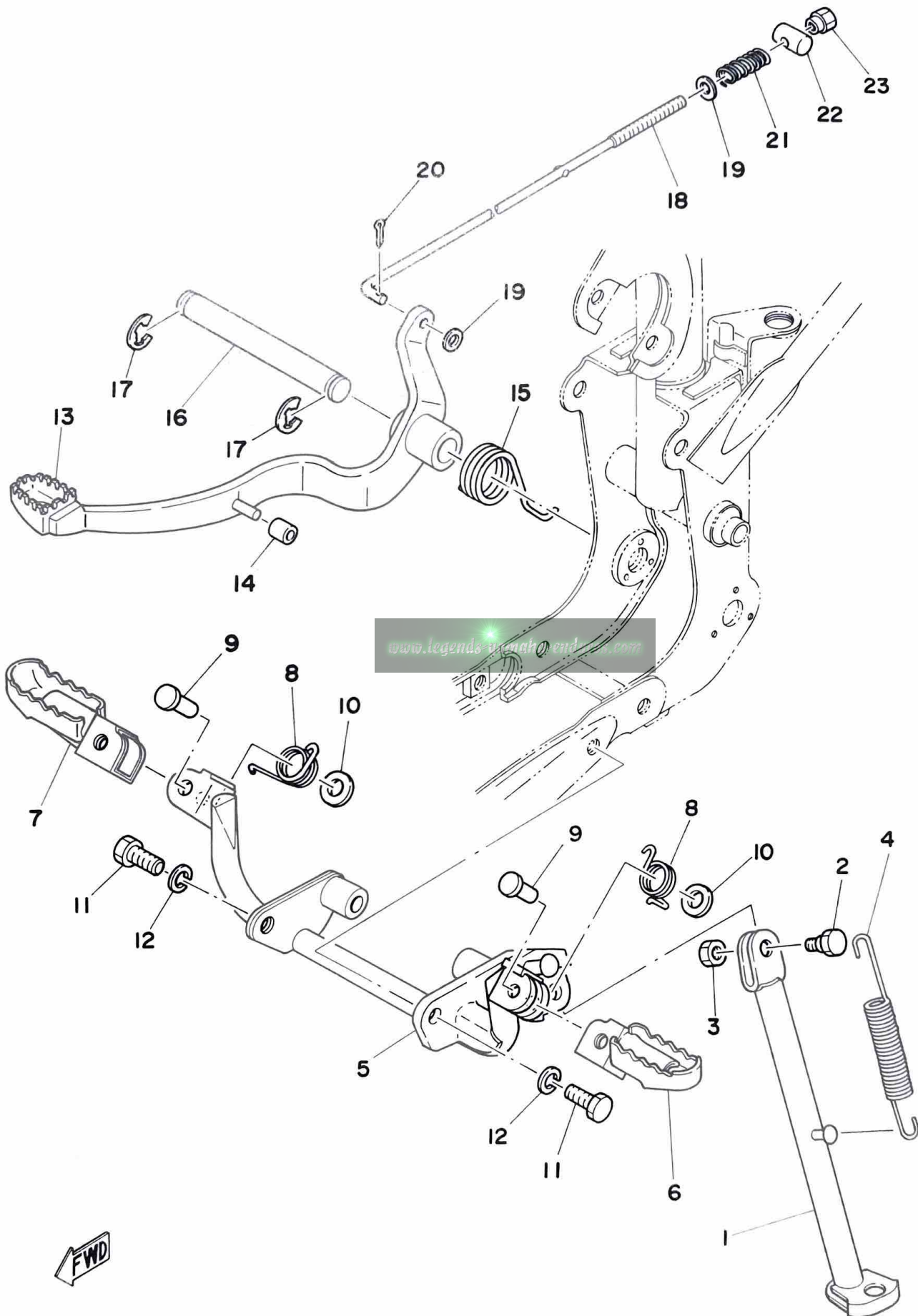
Fig. 14 REAR ARM · REAR CUSHION



Ref. No.	Parts No.	Description	Q'ty	Applicable Machine No.	Remarks
14- 1	1T0-22110-00-33	REAR ARM COMP.	1		Yamaha Black
2	276-22123-00	BUSHING, rear arm	2		
3	401-22141-00	SHAFT, pivot	1		
4	95601-12100	NUT U	1		
5	92901-12100	WASHER, spring	1		
6	183-22151-00	SEAL, guard	1		
7	492-22153-00-33	GUARD, chain	1		Yamaha Black
8	97321-06015	BOLT, hexagon	2		
9	92901-06600	WASHER, plate	2		
10	92901-06100	WASHER, spring	2		
11	95301-06600	NUT, hexagon	2		
12	1T0-22210-00	REAR CUSHION ASS'Y	2		
13	90201-12190	WASHER, plate	7		
14	95303-12800	NUT, crown	3		
15	95303-12600	NUT, hexagon	1		

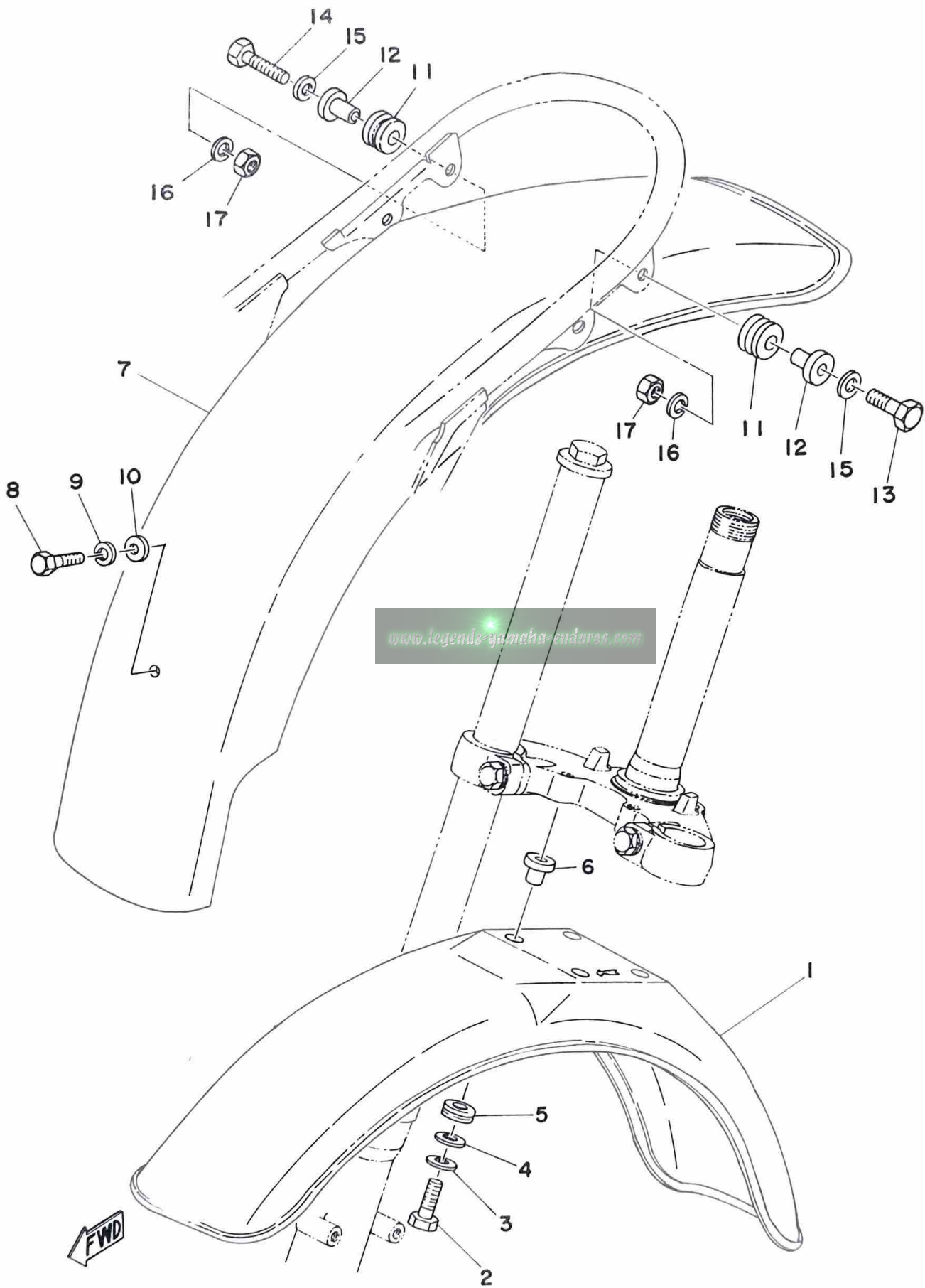
www.legends-yamaha-enduro.com

Fig. 15 STAND · FOOTREST · BRAKE PEDAL



Ref. No.	Parts No.	Description	Q'ty	Applicable Machine No.	Remarks
15- 1	1T0-27311-00-33	STAND, side	1		Yamaha Black
2	90109-08063	BOLT (109-25373-00)	1		
3	95301-08700	NUT, hexagon	1		
4	90506-28100	SPRING, tension (276-27316-00)	1		
5	1T0-27451-00-33	BRACKET, footrest	1		Yamaha Black
6	1M1-27411-00-33	FOOTREST, left	1		Yamaha Black
7	1M1-27421-00-33	FOOTREST, right	1		Yamaha Black
8	90508-20023	SPRING, torsion	2		
9	90243-08006	PIN (214-27418-00)	2		
10	90201-06042	WASHER, plate (214-27417-00)	2		
11	97301-08020	BOLT, hexagon	2		
12	92901-08100	WASHER, spring	2		
13	462-27211-00-33	PEDAL, brake	1		Yamaha Black
14	462-28371-00	DAMPER, brake pedal	1		
15	90508-32218	SPRING, torsion	1		
16	462-27212-00	SHAFT, brake	1		
17	93430-12008	CIRCLIP (E-12)	2		
18	462-27231-00	ROD, brake	1		
19	92901-06600	WASHER, plate	2		
20	91401-20012	PIN, cotter	1		
21	90501-10245	SPRING (180-27236-00)	1		
22	90249-12008	PIN (156-27237-00)	1		
23	90179-06176	NUT	1		

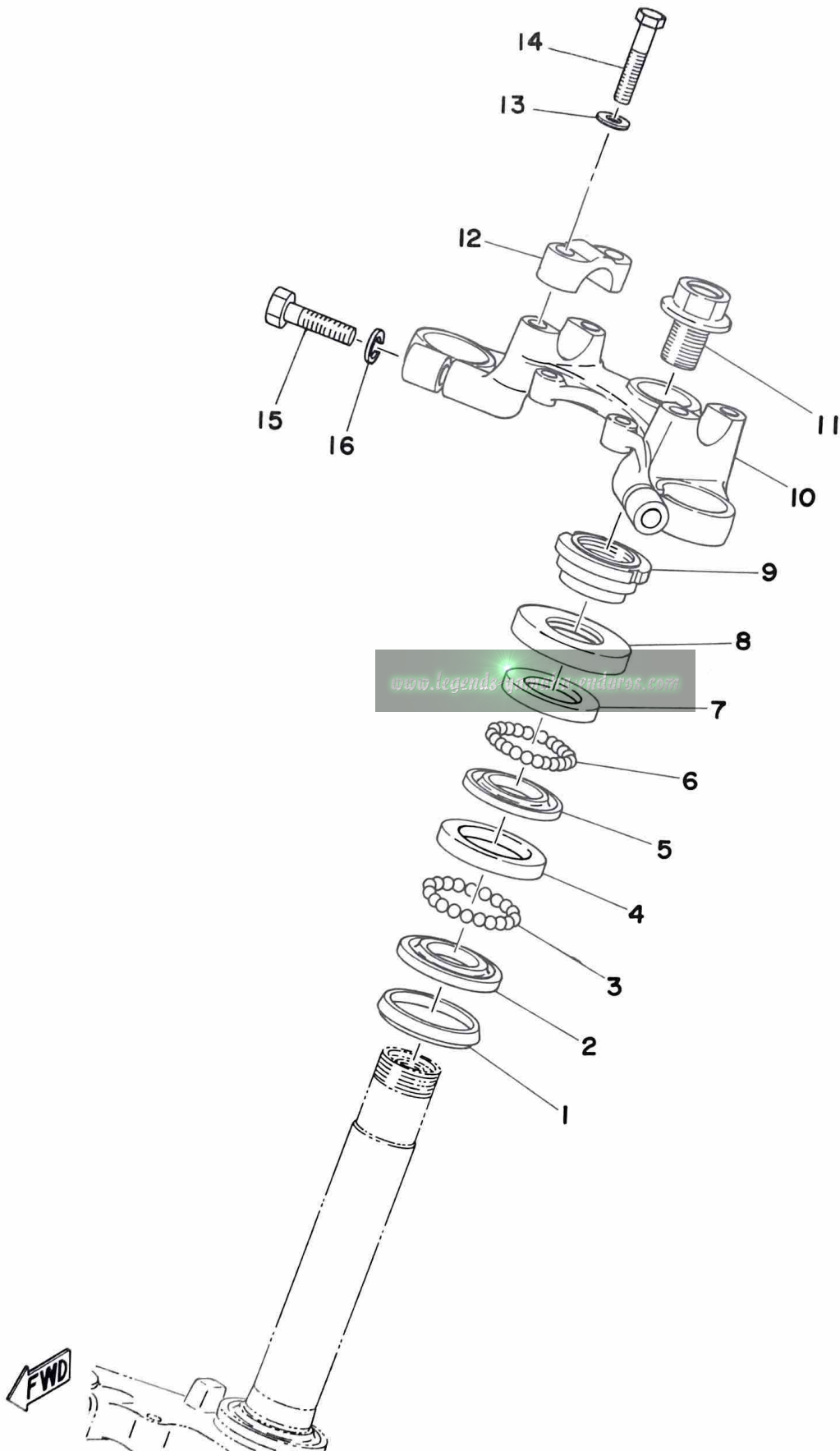
Fig. 16 FRONT FENDER · REAR FENDER



Ref. No.	Parts No.	Description	Q'ty	Applicable Machine No.	Remarks
16- 1	492-21511-00	FENDER, front	1		Competition Yellow
2	97301-06025	BOLT, hexagon	4		
3	92901-06100	WASHER, spring	4		
4	90201-06067	WASHER, plate (6.5-20-1.6)	4		
5	90480-14198	GROMMET	4		
6	90387-06388	COLLAR (322-15440-00)	4		
7	492-21611-00	FENDER, rear	1		Competition Yellow
8	97301-06018	BOLT, hexagon	1		
9	92901-06100	WASHER, spring	1		
10	90201-06067	WASHER, plate (6.5-20-1.6)	1		
11	90480-14102	GROMMET (214-21717-00)	2		
12	90387-06388	COLLAR (322-15440-00)	2		
13	97301-06025	BOLT, hexagon	1		
14	97301-06030	BOLT, hexagon	1		
15	92901-06600	WASHER, plain	2		
16	92901-06100	WASHER, spring	2		
17	95301-06600	NUT, hexagon	2		

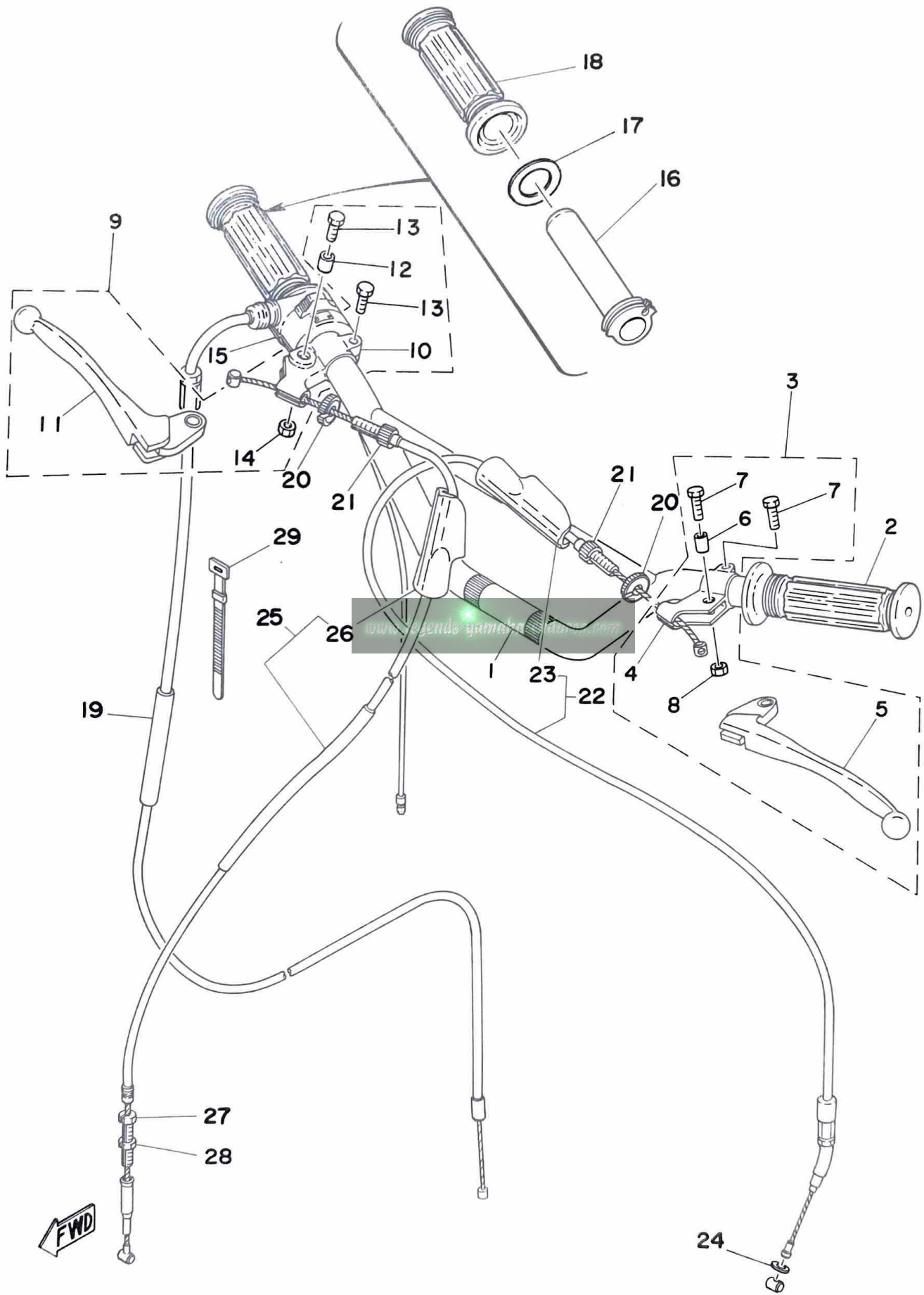
Ref. No.	Parts No.	Description	Q'ty	Applicable Machine No.	Remarks
17- 1	1T0-23101-00	FRONT FORK ASS'Y	1		
2	1T0-23126-00	. TUBE, outer left	1		
3	451-23119-01	. . SCREW, drain plug	1		
4	1T0-23136-00	. TUBE, outer right	1		
5	451-23119-01	. . SCREW, drain plug	1		
6	451-23181-01	. SCREW	2		
7	462-23170-02	. CYLINDER COMP, front fork	2		
8	1T0-23141-00	. SPRING, fork	2		
9	462-23183-02	. CIRCLIP	2		
10	462-23171-02	. PISTON, front fork	2		
11	462-23157-02	. RING	4		
12	462-23125-02	. METAL, slide	2		
13	462-23145-02	. OIL SEAL	2		
14	462-23146-02	. WASHER, oil seal	2		
15	462-23156-02	. CLIP, oil seal	2		
16	462-23144-02	. SEAL, dust	2		
17	1T0-23124-00	. TUBE, inner	2		
18	462-23114-02	. PACKING	2		
19	276-23112-50	. WASHER, cap	2		
20	205-23111-40	. BOLT, cap	2		
21	598-23340-00	. UNDER BRACKET COMP.	1		
22	92901-10100	. WASHER, spring	2		
23	451-23346-01	. BOLT, under bracket	2		
24	92901-12200	. WASHER, plain	2		
25	434-23319-00	. HOLDER, wire	1		
26	462-23318-00	HOLDER, wire 1	1		
27	92901-06600	WASHER, plate	1		
28	92501-06012	SCREW, panhead	1		
29	598-23485-00	PLATE, number	1		
30	462-23395-00	EMBLEM, number	1		
31	431-23486-02	STAY, plate	1		
32	288-23489-00	BAND	1		

Fig. 18 STEERING



Ref. No.	Parts No.	Description	Q'ty	Applicable Machine No.	Remarks
18- 1	164-23462-00	SEAL, dust	1		
2	156-23411-00	RACE, ball 1	1		
3	93501-04011	BALL (1/4 inch)	19		
4	156-23412-00	RACE, ball 2	1		
5	122-23412-00	RACE, ball 2	1		
6	93503-16010	BALL (3/16 inch)	22		
7	122-23411-00	RACE, ball 1	1		
8	122-23416-00	COVER, ball race	1		
9	90179-25033	NUT (137-23454-00)	1		
10	354-23435-00-33	CROWN, handle	1		Yamaha Black
11	90105-14060	BOLT	1		
12	315-23441-00-33	HOLDER, handle upper	2		Yamaha Black
13	90201-08083	WASHER, plate (156-27226-00)	4		
14	97323-08030	BOLT, hexagon	4		
15	97321-08030	BOLT, hexagon	2		
16	92901-08100	WASHER, spring	2		

Fig. 19 HANDLE · WIRE



FWD

Ref. No.	Parts No.	Description	Q'ty	Applicable Machine No.	Remarks
19- 1	598-26111-00	HANDLE	1		
2	1E6-26241-00	GRIP, right	1		
3	214-82910-02	LEVER HOLDER ASS'Y	1		
4	214-82911-01	. HOLDER, lever left	1		
5	214-83912-00	. LEVER, left	1		
6	214-83913-00	. COLLAR, lever	1		
7	97303-06022	. BOLT, hexagon	2		
8	95601-06100	. NUT, U	1		
9	233-82920-02	LEVER HOLDER ASS'Y, right	1		
10	233-82921-31	. HOLDER, lever right	1		
11	233-83922-30	. LEVER, right	1		
12	214-83913-00	. COLLAR, lever	1		
13	97303-06022	. BOLT, hexagon	2		
14	95601-06100	. NUT, U	1		
15	437-83976-02	SWITCH, handle 1	1		
16	434-26243-00	TUBE, guide	1		
17	1M1-26249-01	RING, leaf	1		
18	1A0-26242-01	GRIP, right	1		
19	1T0-26311-00	WIRE, throttle 1	1		
20	90179-08148	NUT (168-26344-00)	2		
21	90123-08013	BOLT (156-26346-00)	2		
22	598-26335-00	WIRE, clutch	1		
23	382-26372-01	. COVER, lever	1		
24	92901-06600	WASHER, plate	1		
25	598-26341-00	WIRE, brake	1		
26	382-26372-01	. COVER, lever	1		
27	90123-06011	BOLT (109-26345-00)	1		
28	90179-06143	NUT (109-26344-00)	1		
29	168-83936-01	BAND, switch cord	1		


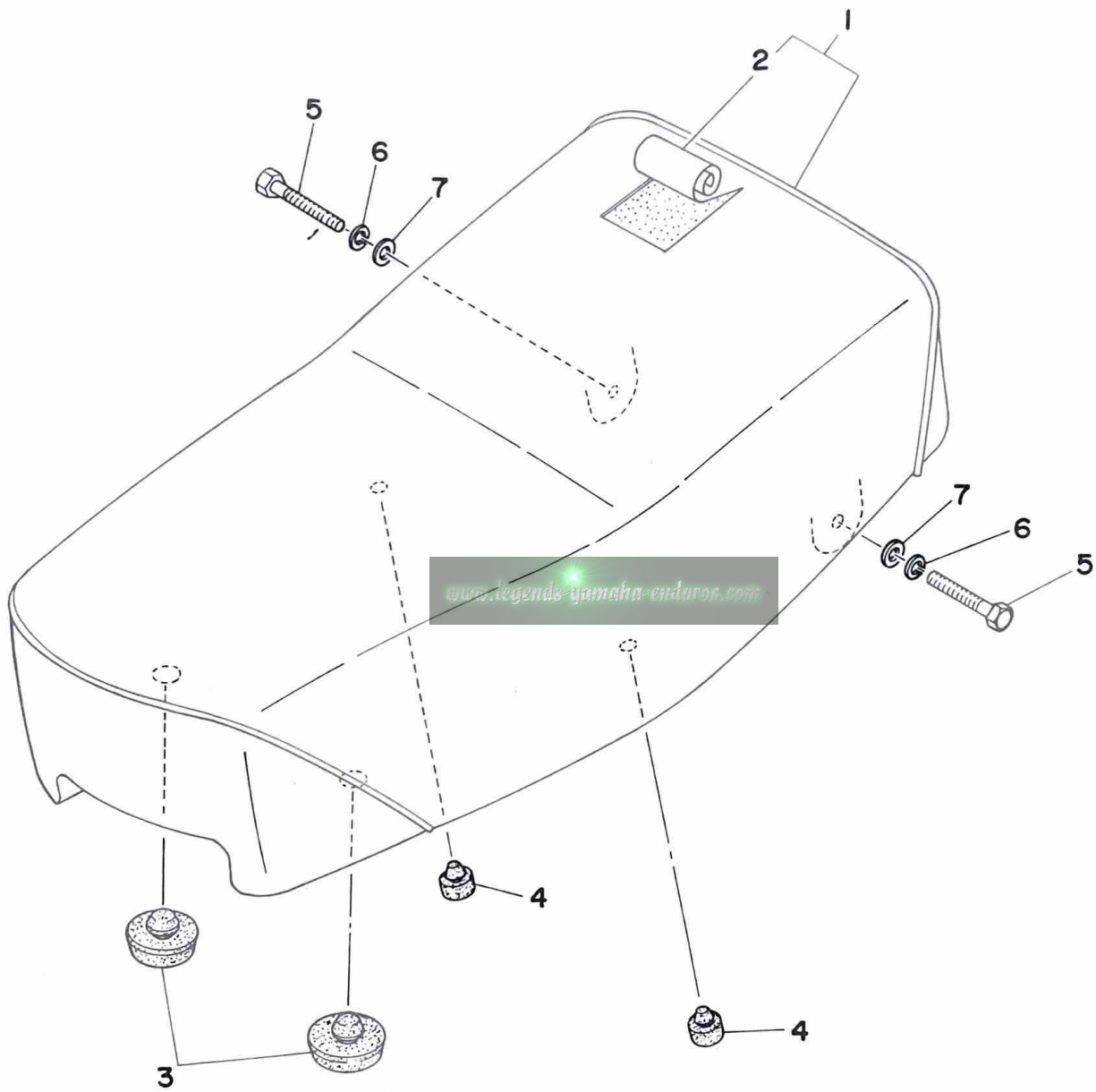
Ref. No.	Parts No.	Description	Q'ty	Applicable Machine No.	Remarks
20- 1	462-24110-10-04	FUEL TANK COMP.	1		Competition Yellow
2	1T0-24244-00	. GRAPHIC, fuel tank 1	1		
3	1T0-24245-00	. GRAPHIC, fuel tank 2	1		
4	322-24611-02	BODY, cap	1		
5	90430-35122	GASKET	1		
6	90445-09104	HOSE (613-24311-00)	1		
7	122-24181-00	DAMPER, locating 1	2		
8	353-24182-00	DAMPER, locating	1		
9	90480-14088	GROMMET	1		
10	90202-14077	WASHER, plate (15-28-5.5)	1		
11	90387-07390	COLLAR	1		
12	90201-06074	WASHER, plate (248-21757-00)	1		
13	97301-06025	BOLT, hexagon	1		
14	92901-06100	WASHER, spring	1		
15	367-24500-04	FUEL COCK ASS'Y	1		
16	355-24515-00	. NET, filter 	1		
17	102-24522-01	. GASKET, filter	1		
18	122-24521-00	. CUP, filter	1		
19	122-24532-00	. GASKET, nut	1		
20	603-24531-01	. NUT	1		
21	98501-05030	. SCREW, panhead	1		
22	355-24524-01	. LEVER, cock	1		
23	355-24523-00	. GASKET, lever	1		
24	355-24518-00	. SPRING, lever	1		
25	95301-05600	. NUT, hexagon	1		
26	90445-09066	HOSE (5-120)	1		
27	90467-08003	CLIP (101-23560-00)	2		

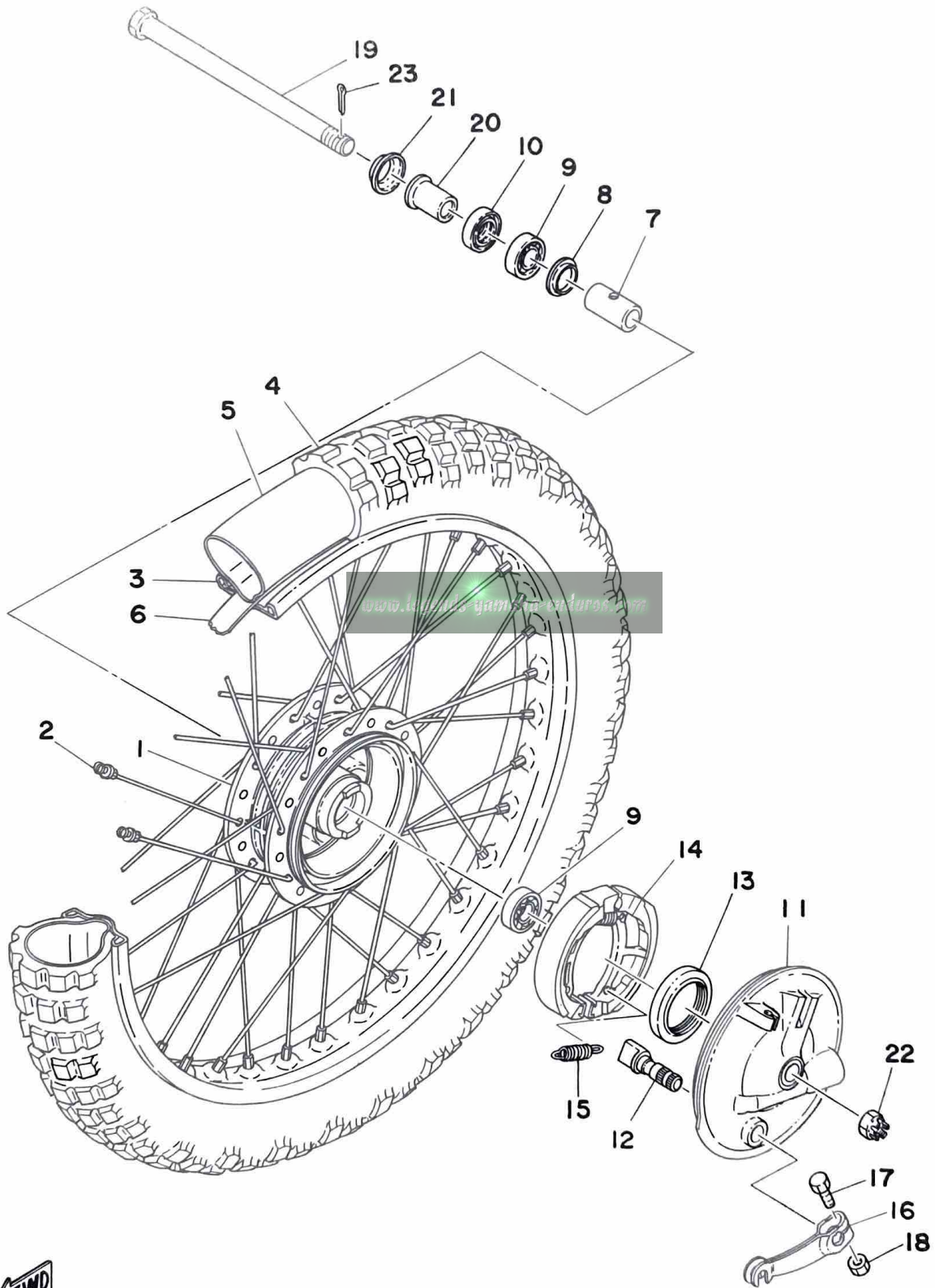
Fig. 21 SEAT



Ref. No.	Parts No.	Description	Q'ty	Applicable Machine No.	Remarks
21- 1	462-24770-00	SEMI-DOUBLE SEAT ASS'Y	1		
2	462-24771-00	. COVER, semi-double seat	1		
3	174-24741-00	PAD, seat	2		
4	90480-08162	GROMMET	2		
5	97321-06015	BOLT, hexagon	2		
6	92901-06100	WASHER, spring	2		
7	92901-06600	WASHER, plate	2		

www.legends-yamaha-enduros.com

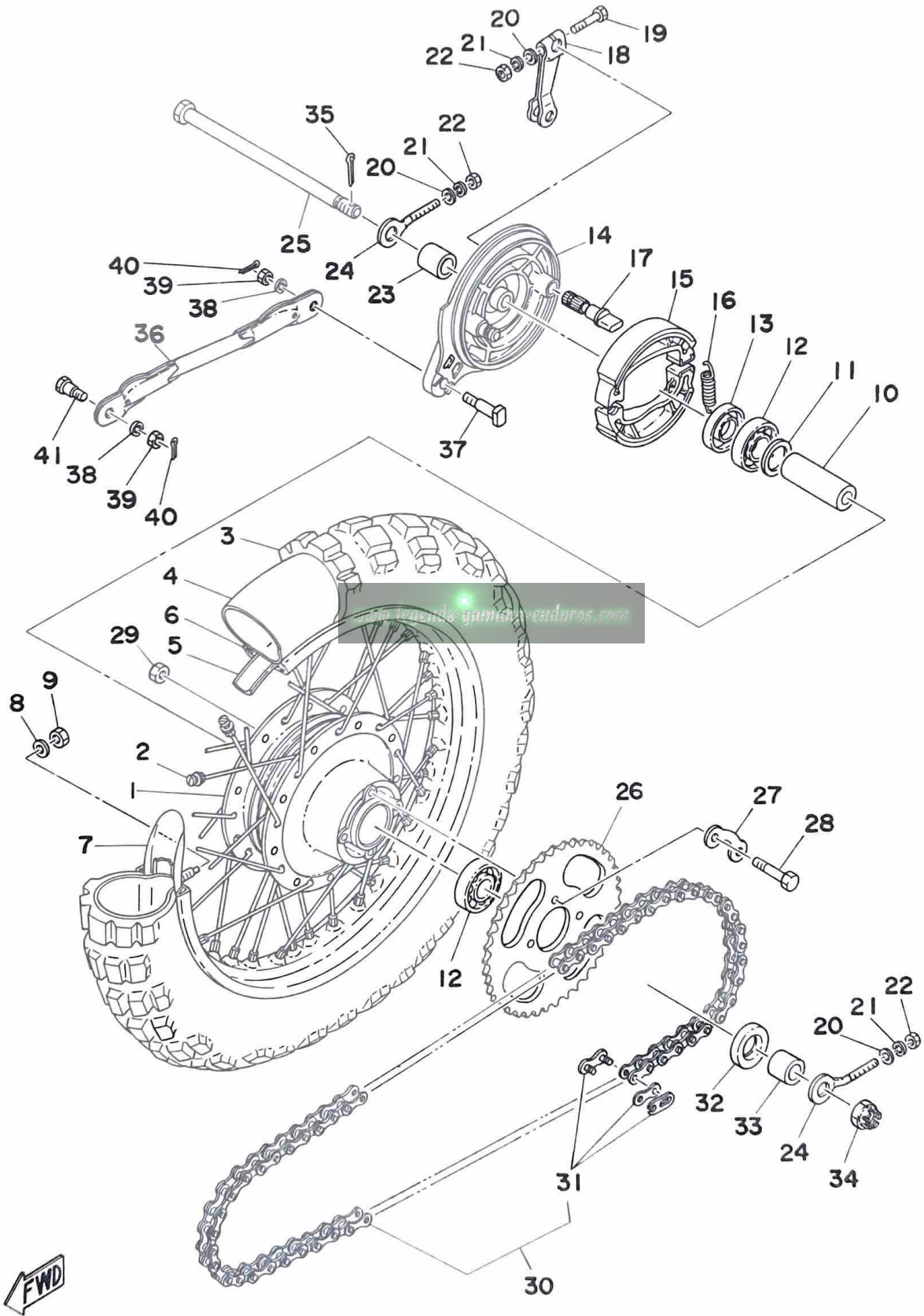
Fig. 22 FRONT WHEEL



Ref. No.	Parts No.	Description	Q'ty	Applicable Machine No.	Remarks
22- 1	462-25111-01-98	HUB, front	1		Low Gloss Black
2	462-25104-00	SPOKE SET	1s		
3	94414-16125	RIM, front (1.40-16)	1		
4	94125-16145	TIRE, front (2.75-16-4PR)	1		
5	94225-16048	TUBE, front (2.75-16)	1		
6	94325-16036	BAND, rim (2.75-16)	1		
7	90560-12138	SPACER (183-25117-00)	1		
8	462-25115-00	FLANGE, spacer	1		
9	93306-00105	BEARING (6001)	2		
10	93106-18013	OIL SEAL (DD-9-19-5)	1		
11	462-25121-00-98	PLATE, brake shoe	1		Low Gloss Black
12	451-25151-00	CAMSHAFT	1		
13	93106-40012	OIL SEAL (DD-40-50-6)	1		
14	451-25130-00	BRAKE SHOE COMP.	1		
15	90506-14081	SPRING, tension (451-25133-00)	2		
16	451-25155-00	LEVER, camshaft	1		
17	90101-06291	BOLT, hexagon	1		
18	95301-06600	NUT, hexagon	1		
19	90102-12015	SHAFT, wheel	1		
20	90387-12265	COLLAR	1		
21	462-25118-00	COVER, hub dust	1		
22	90171-12005	NUT, castle	1		
23	91401-30025	PIN, cotter	1		

Ref. No.	Parts No.	Description	Q'ty	Applicable Machine No.	Remarks
23- 1	462-25311-00-98	HUB, rear	1		Low Gloss Black
2	462-25304-00	SPOKE SET	1s		
3	94136-14256	TIRE, rear (3.60-14-4PR)	1		
4	94230-14049	TUBE, rear (3.00-14)	1		
5	94330-14037	BAND, rim (3.00-14)	1		
6	94414-14200	RIM, rear (1.40-14)	1		
7	462-25394-00	SPACER, bead	1		
8	92901-08600	WASHER, plate	1		
9	95301-08600	NUT, hexagon	1		
10	90560-12139	SPACER (109-25317-00)	1		
11	102-25315-00	FLANGE, spacer	1		
12	93306-30101	BEARING (6301)	2		
13	93106-20002	OIL SEAL (DD-20-37-8)	1		
14	462-25321-00-98	PLATE, brake shoe	1		Low Gloss Black
15	296-25330-00	BRAKE SHOE COMP.	1		
16	90506-16034	SPRING, tension (102-25333-00)	2		
17	122-25351-01	CAMSHAFT	1		
18	122-25355-00	LEVER, camshaft	1		
19	90101-06278	BOLT, hexagon	1		
20	92901-06600	WASHER, plate	3		
21	92901-06100	WASHER, spring	3		
22	95301-06600	NUT, hexagon	3		
23	90387-12412	COLLAR (102-25383-00)	1		
24	102-25389-00	PULLER, chain	2		
25	367-25381-00	SHAFT, wheel	1		
26	492-25447-10	GEAR, sprocket wheel (47T)	} U.R. 1		STD
	492-25448-10	GEAR, sprocket wheel (48T)			
	492-25449-10	GEAR, sprocket wheel (49T)			
27	101-25412-00	WASHER, lock	2		
28	90109-08319	BOLT (109-25411-00)	4		
29	90170-08158	NUT, hexagon	4		
30	94500-03104	CHAIN (RS420-103L)	1		

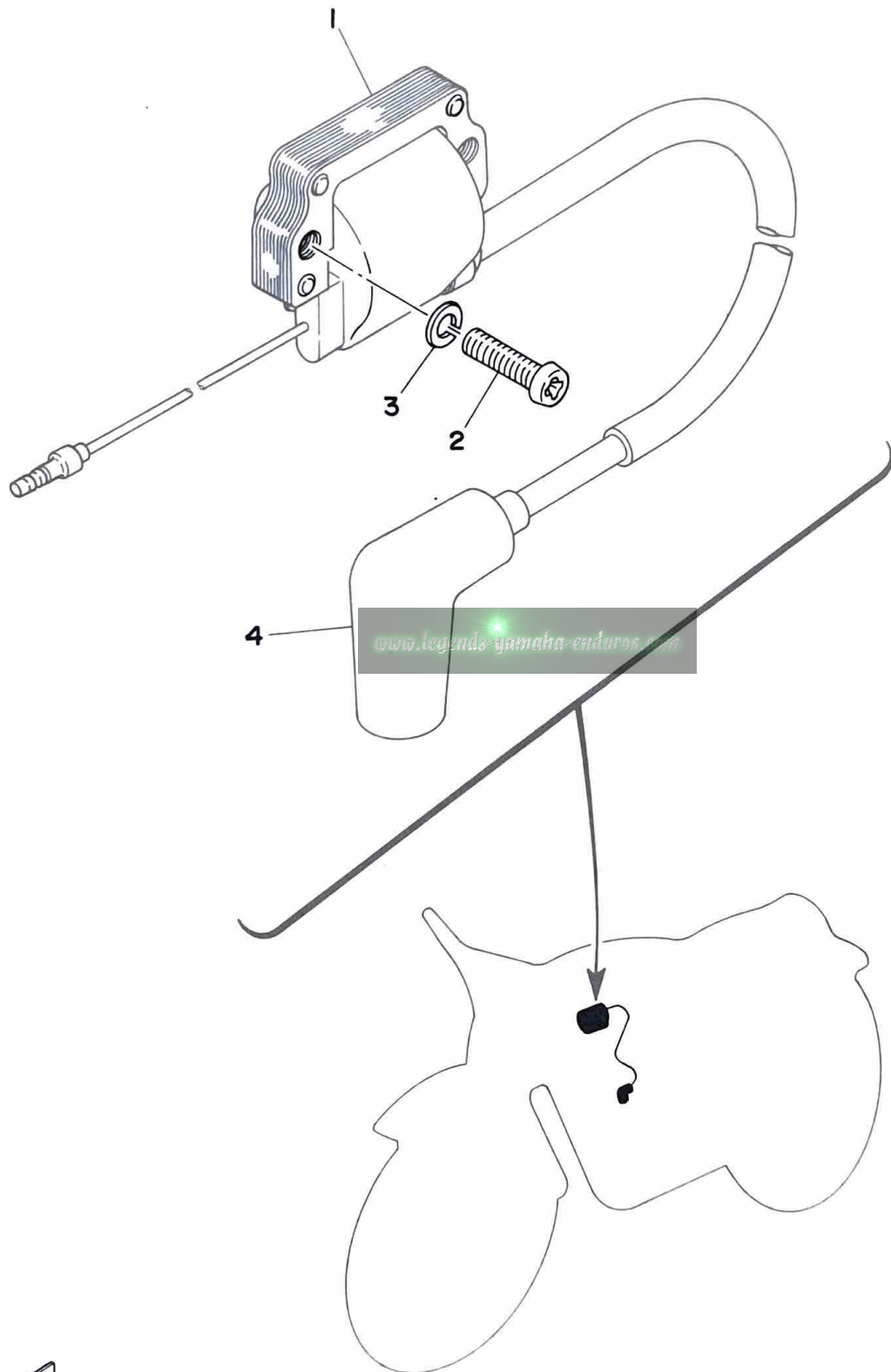
Fig. 23 REAR WHEEL



Ref. No.	Parts No.	Description	Q'ty	Applicable Machine No.	Remarks
23-31	94600-20001	. JOINT, chain	1		
32	93104-18006	OIL SEAL (SO-18-37-5)	1		
33	90387-12272	COLLAR	1		
34	90171-12005	NUT, castle	1		
35	91401-30022	PIN, cotter	1		
36	462-25371-00	BAR, tension	1		
37	90109-08063	BOLT (109-25373-00)	1		
38	92901-08100	WASHER, spring	2		
39	95301-08700	NUT, hexagon	2		
40	91401-20012	PIN, cotter	2		
41	90109-08368	BOLT (183-25378-00)	1		

www.legends-yamaha-enduro.com

Fig. 24 ELECTRICAL



www.legends-yamaha-enduros.com



Ref. No.	Parts No.	Description	Q'ty	Applicable Machine No.	Remarks
24- 1	1T0-82310-40	IGNITION COIL ASS'Y	1		
2	92501-06025	SCREW, panhead	2		
3	92901-06100	WASHER, spring	2		
4	437-82370-21	PLUG CAP ASS'Y	1		

www.legends-yamaha-enduros.com

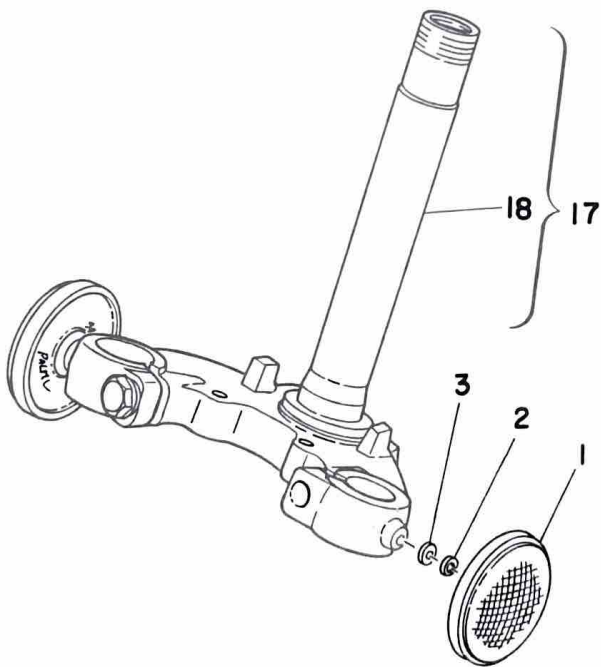
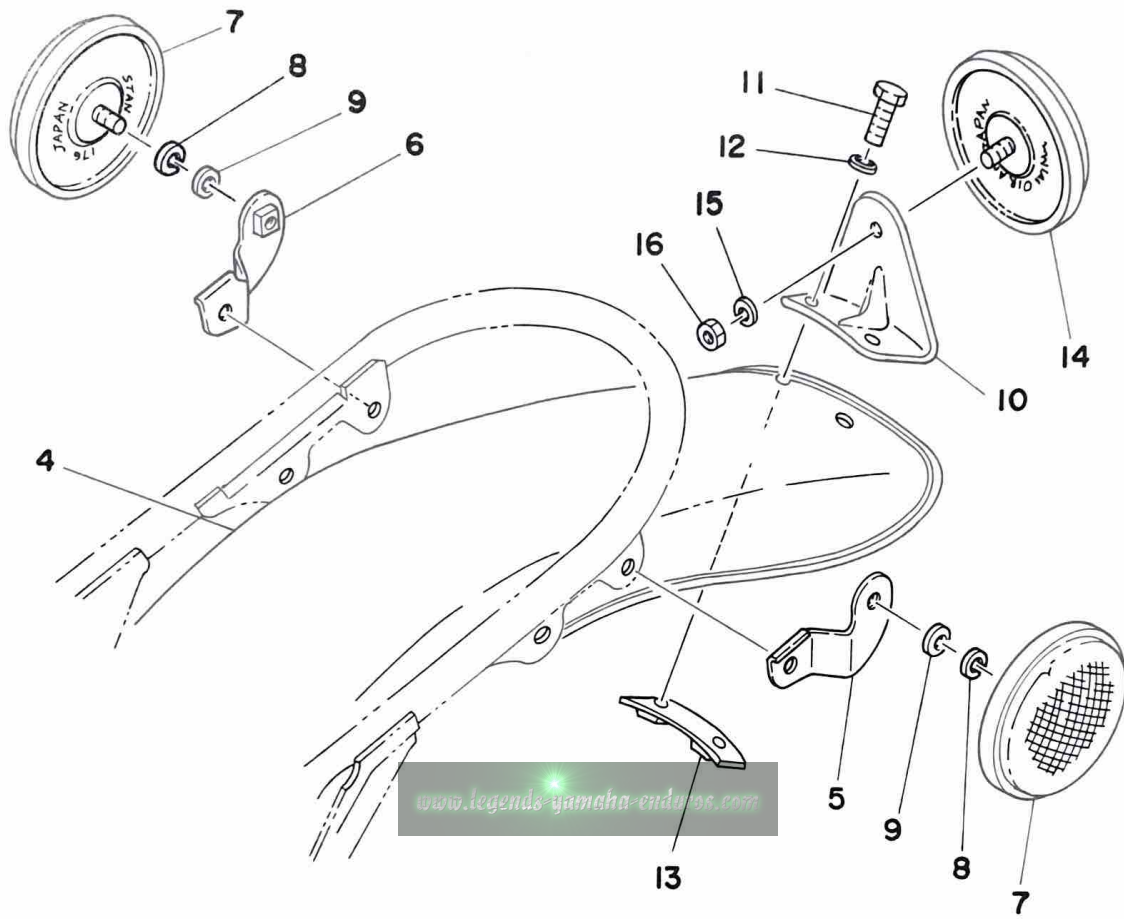
EXCLUSIVE PARTS FOR CANADA

www.legends-yamaha-enduro.com

This Parts List is exclusive for
YZ80D Canada specifications.



Fig. 25 EXCLUSIVE PARTS FOR CANADA



Ref. No.	Parts No.	Description	Q'ty	Applicable Machine No.	Remarks
25- 1	449-85131-00	REFLECTOR	2		
2	92901-05100	WASHER, spring	2		
3	92901-05200	WASHER, plain	2		
4	492-21611-10	FENDER, rear	1		
5	598-85132-00	BRACKET, reflector left	1		
6	1T0-85142-00	BRACKET, reflector right	1		
7	355-85111-00	REFLECTOR	2		
8	92901-05100	WASHER, spring	2		
9	92901-05200	WASHER, plain	2		
10	367-85132-00	BRACKET, reflector	1		
11	97301-06014	BOLT, hexagon	2		
12	92901-06100	WASHER, spring	2		
13	462-85152-00	BRACKET	1		
14	449-85131-00	REFLECTOR	1		
15	92901-05100	WASHER, spring	1		
16	95301-05600	NUT, hexagon	1		
17	598-23101-60	FRONT FORK ASS'Y	1		
18	598-23340-60-33	UNDER BRACKET COMP.	1		Yamaha Black

REPAIR KIT

www.legends-yamaha-enduro.com



Fig. 26 REPAIR KIT

Ref. No.	Parts No.	Description	Q'ty	Applicable Machine No.	Remarks
26- 1	1T0-11630-00	PISTON ASS'Y (STD)	1		
	1T0-11630-10	PISTON ASS'Y (1st O.S)	1		
	1T0-11630-20	PISTON ASS'Y (2nd O.S)	1		
	1T0-11630-30	PISTON ASS'Y (3rd O.S)	1		
	1T0-11630-40	PISTON ASS'Y (4th O.S)	1		
2	1T0-11631-00-97	. PISTON (48.97mm STD)	} U.R 1		Ref. No. 3-9
	1T0-11631-00-98	. PISTON (48.98mm STD)			
	1T0-11635-00	. PISTON (49.25mm 1st O.S)	1		
	1T0-11636-00	. PISTON (49.50mm 2nd O.S)	1		
	1T0-11637-00	. PISTON (49.75mm 3rd O.S)	1		
	1T0-11638-00	. PISTON (50.00mm 4th O.S)	1		
3	598-11601-00	. PISTON RING SET (STD)	1s		3-12
	598-11601-10	. PISTON RING SET (1st O.S)	1s		
	598-11601-20	. PISTON RING SET (2nd O.S)	1s		
	598-11601-30	. PISTON RING SET (3rd O.S)	1s		
	598-11601-40	. PISTON RING SET (4th O.S)	1s		
4	122-11633-00	. PIN, piston	1		3-10
5	93450-13022	. CIRCLIP (132-11634-00)	2		3-11
6	1T0-11650-00	CONNECTING ROD ASS'Y	1		
7	598-11651-00	. ROD, connecting	1		3-4
8	257-11681-00	. PIN, crank	1		3-6
9	93310-418E3	. BEARING, con-rod big end	1		3-5
10	90209-18112	. WASHER	2		3-7
11	93310-11268	. BEARING, con-rod small end	1		3-8

NUMERICAL INDEX

www.legends-yamaha-enduros.com



NUMERICAL INDEX

Ref No.	Parts No.	Ref No.	Parts No.	Ref No.	Parts No.
19-18	1A0-26242-01	17- 4	1T0-23136-00	10- 6	137-14143-36
19- 2	1E6-26241-00	17- 8	1T0-23141-00	10- 6	137-14143-38
19-17	1M1-26249-01	20- 2	1T0-24244-00	6-14	137-15353-00
15- 6	1M1-27411-00-33	20- 3	1T0-24245-00	4-12	137-16356-00
15- 7	1M1-27421-00-33	19-19	1T0-26311-00	10-33	152-14174-00
		15- 1	1T0-27311-00-33	10-32	156-14135-00
		15- 5	1T0-27451-00-33	8- 6	156-15618-01
1-11	1T0-11111-00	24- 1	1T0-82310-40	18- 2	156-23411-00
1- 9	1T0-11311-00	25- 6	1T0-85142-00	18- 4	156-23412-00
3- 1	1T0-11400-00	23-27	101-25412-00	10-23	164-14137-00
26- 1	1T0-11630-00	5-24	102-18137-00-10	18- 1	164-23462-00
26- 1	1T0-11630-10	20-17	102-24522-01	12-14	164-81246-21
26- 1	1T0-11630-20	23-14	102-25315-00	10-22	166-14116-13
26- 1	1T0-11630-30	23-24	102-25389-00	10- 3	168-14190-25
26- 1	1T0-11630-40	12-11	110-81346-21	19-29	168-83936-01
3- 9	1T0-11631-00-97	12- 8	110-81347-21	10-20	174-14134-00
3- 9	1T0-11631-00-98	12- 5	110-81348-21	21- 3	174-24741-00
3- 9	1T0-11635-00	12-10	116-81331-20	10-38	183-14196-00
3- 9	1T0-11636-00	8-16	117-15644-00	14- 6	183-22151-00
3- 9	1T0-11637-00	3-10	122-11633-00	17-20	205-23111-40
3- 9	1T0-11638-00	8- 2	122-15612-02	12- 4	207-81312-21
26- 6	1T0-11650-00	4- 5	122-16164-00	10-16	214-14147-00
9-12	1T0-13565-00	4-16	122-16164-00	10- 4	214-14195-00
9- 1	1T0-14411-00	18- 7	122-23411-00	7- 7	214-18178-00
9- 3	1T0-14412-00	18- 5	122-23412-00	6-17	214-18531-00
9- 8	1T0-14418-00	18- 8	122-23416-00	6- 6	214-18561-00
9- 2	1T0-14451-00	20- 7	122-24181-00	19- 3	214-82910-02
11- 1	1T0-14610-00	20-18	122-24521-00	19- 4	214-82911-01
11- 2	1T0-14752-00	20-19	122-24532-00	19- 5	214-83912-00
4- 2	1T0-16150-00	23-17	122-25351-01	19- 6	214-83913-00
4- 1	1T0-16301-00	23-18	122-25355-00	19-12	214-83913-00
13- 1	1T0-21110-00-33	10- 8	127-14186-00	19- 9	233-82920-02
14- 1	1T0-22110-00-33	10-35	132-14173-00	19-10	233-82921-31
14-12	1T0-22210-00	11- 7	132-14613-00	19-11	233-83922-30
17- 1	1T0-23101-00	4-26	132-16346-00	4-21	241-16341-01
17-17	1T0-23124-00	7-10	132-18113-01	10-26	246-14126-00
17- 2	1T0-23126-00	10- 6	137-14143-34	10-24	246-14132-00

NUMERICAL INDEX

Ref No.	Parts No.	Ref No.	Parts No.	Ref No.	Parts No.
10-25	248-14131-00	4- 6	353-16371-00	12-13	367-81328-20
8-13	248-15668-00	4-22	353-16396-00	12- 2	367-81350-20
3- 6	257-11681-00	5- 6	353-17121-00	25-10	367-85132-00
5- 8	257-15389-00	5- 5	353-17131-00	19-23	382-26372-01
5-19	257-17219-00	5- 3	353-17141-01	19-26	382-26372-01
5-29	257-17461-21	5- 7	353-17151-00	14- 3	401-22141-00
5-29	257-17461-31	5-18	353-17211-00	17-31	431-23486-02
5-29	257-17461-41	5-15	353-17221-00	1-20	434-11161-00
10- 2	260-14142-35	5-16	353-17231-00	17-25	434-23319-00
14- 2	276-22123-00	5-17	353-17241-00	19-16	434-26243-00
17-19	276-23112-50	5-13	353-17251-00	24- 4	437-82370-21
6-16	278-18547-02	5- 1	353-17410-01	19-15	437-83976-02
17-32	288-23489-00	5- 2	353-17411-01	25- 1	449-85131-00
23-15	296-25330-00	5-10	353-17471-00	25-14	449-85131-00
12- 3	296-81309-20	7- 8	353-18101-00	4-25	451-16342-00
12- 7	296-81321-21	7- 9	353-18111-00-93	17- 3	451-23119-01
12- 9	296-81325-20	7- 1	353-18120-00	17- 5	451-23119-01
12- 6	296-81332-20	6- 3	353-18141-01	17- 6	451-23181-01
10-31	304-14171-00	6- 8	353-18511-01	17-23	451-23346-01
10- 9	304-14184-00	6-18	353-18512-01	22-14	451-25130-00
10-36	304-14261-00	6-19	353-18513-01	22-12	451-25151-00
9-13	314-13621-02	6- 1	353-18540-01	22-16	451-25155-00
10-21	314-14112-15	6-11	353-18562-00	2-13	462-15416-01-98
10- 7	314-14185-00	20- 8	353-24182-00	2- 6	462-15421-01-98
18-12	315-23441-00-33	10-19	354-14147-00	8- 1	462-15610-00-93
20- 4	322-24611-02	18-10	354-23435-00-33	8- 8	462-15660-00
9-15	345-13613-70	20-16	355-24515-00	8-14	462-15666-00
10-34	353-14138-00	20-24	355-24518-00	8-11	462-15676-00
2-15	353-15362-00	20-23	355-24523-00	5-19	462-17219-00
2- 1	353-15411-00-98	20-22	355-24524-01	17-18	462-23114-02
2- 2	353-15415-00-98	25- 7	355-85111-00	17-12	462-23125-02
2- 9	353-15437-02	10-29	360-14124-20	17-16	462-23144-02
2- 7	353-15451-00	7- 2	367-18197-00	17-13	462-23145-02
8-18	353-15641-00	20-15	367-24500-04	17-14	462-23146-02
5-23	353-15651-00	23-25	367-25381-00	17-15	462-23156-02
3-16	353-16111-01	12- 1	367-81300-21	17-11	462-23157-02
4-18	353-16357-00	12-12	367-81315-20	17- 7	462-23170-02

NUMERICAL INDEX

Ref No.	Parts No.	Ref No.	Parts No.	Ref No.	Parts No.
17-10	462-23171-02	10- 5	558-14141-30	23-19	90101-06278
17- 9	462-23183-02	10-13	558-14147-00	22-17	90101-06291
17-26	462-23318-00	1-10	598-11181-00	22-19	90102-12015
17-30	462-23395-00	1- 8	598-11351-00	18-11	90105-14060
20- 1	462-24110-10-04	3- 2	598-11412-00	15- 2	90109-08063
21- 1	462-24770-00	3- 3	598-11422-00	23-37	90109-08063
21- 2	462-24771-00	3-12	598-11601-00	23-28	90109-08319
22- 2	462-25104-00	3-12	598-11601-10	23-41	90109-08368
22- 1	462-25111-01-98	3-12	598-11601-20	13- 4	90109-08387
22- 8	462-25115-00	3-12	598-11601-30	6-13	90109-14390
22-21	462-25118-00	3-12	598-11601-40	4-20	90113-06013
22-11	462-25121-00-98	3- 4	598-11651-00	1- 7	90116-07031
23- 2	462-25304-00	10- 1	598-14101-60	11- 8	90116-08166
23- 1	462-25311-00-98	9- 9	598-14453-00	4-10	90119-05001
23-14	462-25321-00-98	11-11	598-14718-00	19-27	90123-06011
23-36	462-25371-00	11-15	598-14771-00	19-21	90123-08013
23- 7	462-25394-00	1- 1	598-15111-00-98	7- 5	90149-08094
15-13	462-27211-00-33	1- 2	598-15121-01-98	23-29	90170-08158
15-16	462-27212-00	4- 7	598-16321-01	4-13	90170-12060
15-18	462-27231-00	4- 8	598-16324-00	3-22	90170-12175
13-17	462-28100-11	4- 9	598-16351-00	22-22	90171-12005
15-14	462-28371-00	5-12	598-17421-00	23-34	90171-12005
25-13	462-85152-00	13- 7	598-21711-00	19-28	90179-06143
16- 1	492-21511-00	13-13	598-21721-00	15-23	90179-06176
16- 7	492-21611-00	13-12	598-21732-00	1-12	90179-07203
25- 4	492-21611-10	25-17	598-23101-60	19-20	90179-08148
14- 7	492-22153-00-33	17-21	598-23340-00	3-18	90179-12044
23-26	492-25447-10	25-18	598-23340-60-33	5-31	90179-12181
23-26	492-25448-10	17-29	598-23485-00	18- 9	90179-25033
23-26	492-25449-10	19- 1	598-26111-00	13- 6	90185-08054
10-15	493-14122-00	19-22	598-26335-00	15-10	90201-06042
10-17	493-14133-00	19-25	598-26341-00	9- 7	90201-06067
10-14	500-14115-00	25- 5	598-85132-00	13-11	90201-06067
10-18	525-14123-00	20-20	603-24531-01	13-16	90201-06067
10-10	539-14181-00	10-27	802-14158-00	16- 4	90201-06067
9-14	558-13610-00	10-28	802-14161-00	16-10	90201-06067
9-16	558-13616-00	10-30	802-14169-00	20-12	90201-06074

NUMERICAL INDEX

Ref No.	Parts No.	Ref No.	Parts No.	Ref No.	Parts No.
18-13	90201-08083	20- 6	90445-09104	9- 5	92501-06012
14-13	90201-12190	9-11	90460-43053	11- 3	92501-06012
3-20	90201-12535	9-10	90460-51059	17-28	92501-06012
7-13	90201-12575	1-19	90465-06056	4-24	92501-06015
5-21	90201-13202	20-27	90467-08003	1- 6	92501-06025
4- 4	90201-23315	8-17	90468-26038	9-20	92501-06025
11-14	90202-05005	21- 4	90480-08162	24- 2	92501-06025
11-13	90202-06010	13- 8	90480-12053	1- 4	92501-06050
20-10	90202-14077	20- 9	90480-14088	1- 5	92501-06055
5-22	90206-15021	16-11	90480-14102	2-12	92506-06015
3-17	90208-12015	16- 5	90480-14198	2- 3	92506-06020
4-14	90208-12015	6-15	90501-09292	2-14	92506-06025
8- 4	90209-10108	15-21	90501-10245	2- 5	92506-06030
3- 7	90209-18112	4-11	90501-20122	2-11	92506-06030
5-30	90215-13019	8- 3	90504-18005	2-10	92506-06040
15- 9	90243-08006	4-27	90506-07066	2- 4	92506-06045
15-22	90249-12008	22-15	90506-14081	6-12	92701-06012
3-23	90280-03017	23-16	90506-16034	9-17	92901-03100
6-21	90334-12009	15- 4	90506-28100	10-12	92901-04100
2-19	90338-07011	15- 8	90508-20023	25- 2	92901-05100
2-18	90338-15045	8-12	90508-26196	25- 8	92901-05100
1-21	90338-16029	7- 3	90508-32054	25-15	92901-05100
2-17	90338-16029	15-15	90508-32218	25- 3	92901-05200
1-16	90340-10003	22- 7	90560-12138	25- 9	92901-05200
1-14	90340-12005	23-10	90560-12139	11- 4	92901-06100
16- 6	90387-06388	4-15	90560-17123	13-10	92901-06100
16-12	90387-06388	10-37	91401-16015	13-15	92901-06100
20-11	90387-07390	15-20	91401-20012	14-10	92901-06100
22-20	90387-12265	23-40	91401-20012	16- 3	92901-06100
23-33	90387-12272	6-10	91401-25017	16- 9	92901-06100
23-23	90387-12412	23-35	91401-30022	16-16	92901-06100
5-28	90387-17137	22-23	91401-30025	20-14	92901-06100
3-15	90387-20170	2- 8	91810-02014	21- 6	92901-06100
1-17	90430-10031	1-18	91830-21014	23-21	92901-06100
1-15	90430-12038	1- 3	91830-22016	24- 3	92901-06100
20- 5	90430-35122	11-12	91903-06010	25-12	92901-06100
20-26	90445-09066	5-11	92501-06012	1-23	92901-06200

NUMERICAL INDEX

Ref No.	Parts No.	Ref No.	Parts No.	Ref No.	Parts No.
9- 4	92901-06600	5- 9	93306-20303	25-16	95301-05600
9-19	92901-06600	3-13	93306-20418	14-11	95301-06600
11- 5	92901-06600	23-12	93306-30101	16-17	95301-06600
14- 9	92901-06600	5-26	93306-30301	22-18	95301-06600
15-19	92901-06600	3- 8	93310-11268	23-22	95301-06600
16-15	92901-06600	3- 5	93310-418E3	4-19	95301-06700
17-27	92901-06600	5-25	93410-12003	7- 6	95301-08600
19-24	92901-06600	5-20	93410-13004	23- 9	95301-08600
21- 7	92901-06600	8-10	93410-15005	15- 3	95301-08700
23-20	92901-06600	8-15	93410-25017	23-39	95301-08700
11- 9	92901-08100	6-20	93430-10016	11-10	95303-08600
11-16	92901-08100	7- 4	93430-10016	14-15	95303-12600
11-19	92901-08100	7-14	93430-10016	14-14	95303-12800
13- 5	92901-08100	15-17	93430-12008	19- 8	95601-06100
15-12	92901-08100	8- 5	93440-10028	19-14	95601-06100
18-16	92901-08100	5- 4	93440-16030	14- 4	95601-12100
23-38	92901-08100	5-14	93440-16030	13- 2	95821-08090
11-20	92901-08600	6- 4	93440-12026	13- 3	95821-08120
23- 8	92901-08600	3-11	93450-13022	1-22	97301-06010
17-22	92901-10100	18- 3	93501-04011	25-11	97301-06014
3-21	92901-12100	4-17	93503-16010	9- 6	97301-06015
14- 5	92901-12100	18- 6	93503-16010	13- 9	97301-06015
17-24	92901-12200	6- 2	93604-08071	13-14	97301-06015
7-12	93101-12004	6- 5	93604-10011	16- 8	97301-06018
3-19	93102-20155	6- 9	93606-14081	16- 2	97301-06025
5-27	93102-25017	22- 4	94125-16145	16-13	97301-06025
3-14	93103-28100	23- 3	94136-14256	20-13	97301-06025
4-23	93104-11028	22- 6	94325-16036	16-14	97301-06030
23-32	93104-18006	22- 5	94225-16048	11-18	97301-08020
22-10	93106-18013	23- 4	94230-14049	15-11	97301-08020
23-13	93106-20002	23- 5	94330-14037	11-17	97301-08035
22-13	93106-40012	23- 6	94414-14200	19- 7	97303-06022
8- 9	93109-15001	22- 3	94414-16125	19-13	97303-06022
2-16	93210-21190	23-30	94500-03104	8- 7	97311-06025
11- 6	93210-42263	23-31	94600-03001	14- 8	97321-06015
4- 3	93210-98202	1-13	94701-00045	21- 5	97321-06015
22- 9	93306-00105	20-25	95301-05600	7-11	97321-06020

NUMERICAL INDEX

Ref No.	Parts No.	Ref No.	Parts No.	Ref No.	Parts No.
18-15	97321-08030				
18-14	97323-08030				
10-11	98501-04016				
20-21	98501-05030				
9-18	98512-03008				
6- 7	98701-05012				
12-15	98701-05015				

www.legends-yamaha-enduros.com

www.legends-yamaha-enduros.com



YAMAHA MOTOR CO., LTD.

PRINTED IN JAPAN

First edition Sept., 1976

(LIT-10011-TD-00) (1TO-28198-60)